

---

---

**Paints and varnishes — Evaluation of  
defects on coated surfaces using optical  
imaging —**

**Part 2:  
Evaluation procedure for multi-impact  
stone-chipping test**

*Peintures et vernis — Évaluation par imagerie optique des défauts des  
surfaces revêtues —*

*Partie 2: Mode opératoire d'évaluation pour l'essai d'impacts multiples  
de cailloux*



Reference number  
ISO 21227-2:2006(E)

© ISO 2006

**PDF disclaimer**

This PDF file may contain embedded typefaces. In accordance with Adobe's licensing policy, this file may be printed or viewed but shall not be edited unless the typefaces which are embedded are licensed to and installed on the computer performing the editing. In downloading this file, parties accept therein the responsibility of not infringing Adobe's licensing policy. The ISO Central Secretariat accepts no liability in this area.

Adobe is a trademark of Adobe Systems Incorporated.

Details of the software products used to create this PDF file can be found in the General Info relative to the file; the PDF-creation parameters were optimized for printing. Every care has been taken to ensure that the file is suitable for use by ISO member bodies. In the unlikely event that a problem relating to it is found, please inform the Central Secretariat at the address given below.

© ISO 2006

All rights reserved. Unless otherwise specified, no part of this publication may be reproduced or utilized in any form or by any means, electronic or mechanical, including photocopying and microfilm, without permission in writing from either ISO at the address below or ISO's member body in the country of the requester.

ISO copyright office  
Case postale 56 • CH-1211 Geneva 20  
Tel. + 41 22 749 01 11  
Fax + 41 22 749 09 47  
E-mail [copyright@iso.org](mailto:copyright@iso.org)  
Web [www.iso.org](http://www.iso.org)

Published in Switzerland

# Contents

Page

<b>Foreword</b> .....	<b>iv</b>
<b>Introduction</b> .....	<b>v</b>
<b>1 Scope</b> .....	<b>1</b>
<b>2 Normative references</b> .....	<b>1</b>
<b>3 Principle</b> .....	<b>1</b>
<b>4 Requirements</b> .....	<b>1</b>
<b>5 Calibration</b> .....	<b>2</b>
<b>6 Procedure</b> .....	<b>2</b>
<b>7 Evaluation</b> .....	<b>3</b>
<b>8 Precision</b> .....	<b>3</b>
<b>9 Test report</b> .....	<b>4</b>
<b>Annex A (normative) Ratings in accordance with ISO 20567-1 to be used to evaluate the damage as a whole</b> .....	<b>5</b>
<b>Annex B (informative) Example of an extended evaluation</b> .....	<b>7</b>

.....

## Foreword

ISO (the International Organization for Standardization) is a worldwide federation of national standards bodies (ISO member bodies). The work of preparing International Standards is normally carried out through ISO technical committees. Each member body interested in a subject for which a technical committee has been established has the right to be represented on that committee. International organizations, governmental and non-governmental, in liaison with ISO, also take part in the work. ISO collaborates closely with the International Electrotechnical Commission (IEC) on all matters of electrotechnical standardization.

International Standards are drafted in accordance with the rules given in the ISO/IEC Directives, Part 2.

The main task of technical committees is to prepare International Standards. Draft International Standards adopted by the technical committees are circulated to the member bodies for voting. Publication as an International Standard requires approval by at least 75 % of the member bodies casting a vote.

Attention is drawn to the possibility that some of the elements of this document may be the subject of patent rights. ISO shall not be held responsible for identifying any or all such patent rights.

ISO 21227-2 was prepared by Technical Committee ISO/TC 35, *Paints and varnishes*, Subcommittee SC 9, *General test methods for paints and varnishes*.

ISO 21227 consists of the following parts, under the general title *Paints and varnishes — Evaluation of defects on coated surfaces using optical imaging*:

- *Part 1: General guidance*
- *Part 2: Evaluation procedure for multi-impact stone-chipping test*
- *Part 3: Evaluation of delamination and corrosion around a scribe*

## Introduction

The conventional ISO test methods for evaluating surface defects and appearance changes often utilize pictorial standards which depict particular types of surface deterioration and require human visual evaluation. The technology described in this part of ISO 21227 can yield more objective, accurate, quantitative and reproducible results when compared to the human visual evaluation techniques.



# Paints and varnishes — Evaluation of defects on coated surfaces using optical imaging —

## Part 2: Evaluation procedure for multi-impact stone-chipping test

### 1 Scope

This part of ISO 21227 describes a procedure for evaluating multi-stone impact damage by means of optical imaging. A suitable method for simulating the damaging process is specified in ISO 20567-1.

### 2 Normative references

The following referenced documents are indispensable for the application of this document. For dated references, only the edition cited applies. For undated references, the latest edition of the referenced document (including any amendments) applies.

ISO 20567-1, *Paints and varnishes — Determination of stone-chip resistance of coatings — Part 1: Multi-impact testing*

ISO 21227-1, *Paints and varnishes — Evaluation of defects on coated surfaces using optical imaging — Part 1: General guidance*

### 3 Principle

From a digital optical image of the degradation caused by stone chipping, a grey-scale or colour image is made. This image is transformed into a binary image (through thresholding) in which the damaged areas of the surface are shown as black patches while the undamaged areas of the surface are visible as white patches. The percentage of the damaged to the total test area is recorded and a rating determined.

### 4 Requirements

#### 4.1 General

The conditions specified in ISO 21227-1 apply to this part of ISO 21227 as well.

#### 4.2 Illumination

The illumination shall be such that the damaged areas can be clearly distinguished from the undamaged areas. Experience has shown that diffuse bright-field illumination is suitable for image acquisition of multi-impact degradation.

**NOTE** If direct illumination is used, any kind of surface disturbance which is not caused by stone chipping can also be detected.

### 4.3 Region of interest and resolution

The size of the region of interest (ROI) of the image should preferably be 70 mm × 70 mm. When the test is performed using smaller ROIs, for example because these are easier to illuminate, it shall be ensured that the difference between the result of the evaluation of the reference area and that of the evaluation of the total area is not larger than half a rating as defined in ISO 20567-1.

NOTE 1 The ROI size of 70 mm × 70 mm was chosen to exclude regions of uneven distribution of damage at the edges of the area of 80 mm × 80 mm previously used.

NOTE 2 The result of the evaluation of a smaller ROI can be considerably different from evaluation of the total area.

The minimum resolution shall be 6 pixels per millimetre.

NOTE 3 Different resolutions can lead to different values for the damaged areas.

## 5 Calibration

### 5.1 General

The purpose of the calibration process is to fix the image acquisition parameters in such a way that image analysis will make it possible to assign the right rating to test panels that have not been examined before, by using ratings that have been determined for reference panels in accordance with ISO 20567-1. Furthermore, a visual comparison is made to verify the correspondence between the reference panel and the digitized image with regard to the detected degradation. This calibration procedure guarantees only the repeatability of the process; for the reproducibility, refer to Clause 8.

The reference panels shall be as similar as possible to the test panels as far as the structure and contrast of the individual layers are concerned; they shall therefore be prepared in the same laboratory, using the same equipment.

### 5.2 Calibration process

Carry out the calibration process as described below using a self-made set of reference panels to which the ratings defined in ISO 20567-1 (see Annex A) have been assigned and which cover the whole range of these ratings.

Take a picture of the impact area of each reference using the selected optical-imaging system. Visually compare each digitized image with the corresponding reference panel to determine whether the damaged and undamaged areas correspond to those on the reference panel. If so, analyse the image using the optical-imaging system. The result of this analysis shall represent the rating for each reference panel. If calibration is not possible although the settings of all the system components involved in the image acquisition process have been optimized, the selected optical-imaging system is not suitable for the evaluation to be made.

NOTE The results of optical imaging and visual evaluation can differ since visual evaluation unconsciously considers not only the damaged area but also additional characteristics, e.g. the size and distribution of the defects.

## 6 Procedure

Prepare the test panels for optical imaging following the procedure specified in ISO 20567-1.

Create an image of the test panel using the calibrated optical-imaging system. Once suitable threshold values have been established, the digitized image provides, on analysis, a value for the damaged area. To ensure optimum results, the difference between the test panels and the reference panels shall not be too big.



## 7 Evaluation

### 7.1 General

The result of the image analysis is a data recording to which one or more ratings are assigned.

### 7.2 Evaluation

If the coating is delaminated or flaked, all such damage shall be included in the evaluation, irrespective of which layer it occurs in.

NOTE This type of damage can also occur on soft substrates, such as plastics or aluminium.

### 7.3 Rating in accordance with ISO 20567-1

Determine the percentage of the total evaluated area represented by the damaged area, the damaged and undamaged areas together making up 100 %. The damaged areas shall be those visible in the image as discrete black- or grey-shaded patches, while the undamaged areas shall be those which appear white.

To allow comparison with the visual evaluation, the percentage damaged area determined through image evaluation shall be expressed as a rating on the rating scale from 0 to 5,0 as specified in ISO 20567-1. Results that fall between two whole numbers shall be expressed as half-point ratings such as 3,5.

### 7.4 Extended evaluation

For an extended evaluation, the contributions of the individual layers to the total damaged area can be determined. The layer that accounts for the largest share of the damaged area shall be regarded as the main separation level.

If possible, the extent of individual areas of damage and the percentage of the total area represented by each such area shall be determined. The data compiled in this way can be used as the basis for a number of further analyses.

An example of an extended evaluation is given in Annex B.

## 8 Precision

In 2003, ISO/TC 35/SC 9 carried out an international round-robin test in which nine laboratories from four countries participated. Two test panels were used, each containing two areas of stone-chip damage, created in accordance with ISO 20567-1. Different digital optical-imaging technologies were used for the evaluation of a region of interest of 70 mm × 70 mm, all using diffuse bright-field illumination.

The repeatability limit,  $r$ , was not determined.

The reproducibility limit,  $R$ , was determined for two different levels of damage. The results are given in Table 1.

**Table 1 — Reproducibility limit**

Damaged area %	Rating in accordance with ISO 20567-1	Reproducibility standard deviation, $s_R$ %	Reproducibility limit, $R$ %
3,2	1,5	0,6	1,6
6,3	2	1,1	3,0

## 9 Test report

The test report shall contain at least the following information:

- a) all information necessary for identification of the coating tested (manufacturer, trade name, batch number, etc.);
- b) a reference to this part of ISO 21227 (ISO 21227-2:2006);
- c) the type of illumination (light source, arrangement of lamps);
- d) the image-acquisition set-up used, including details of the:
  - 1) original image,
  - 2) image-acquisition system,
  - 3) resolution, image size,
  - 4) grey scale,
  - 5) colour scale,
  - 6) gamma correction;
- e) details of the image processing and image analysis, including all processing procedures used, if available;
- f) the result of the test, as specified in Clause 7;
- g) any deviations from the procedure specified;
- h) any unusual features (anomalies) observed during the test;
- i) the date of the test;
- j) the name of the person who carried out the test.

## Annex A (normative)

### Ratings in accordance with ISO 20567-1 to be used to evaluate the damage as a whole

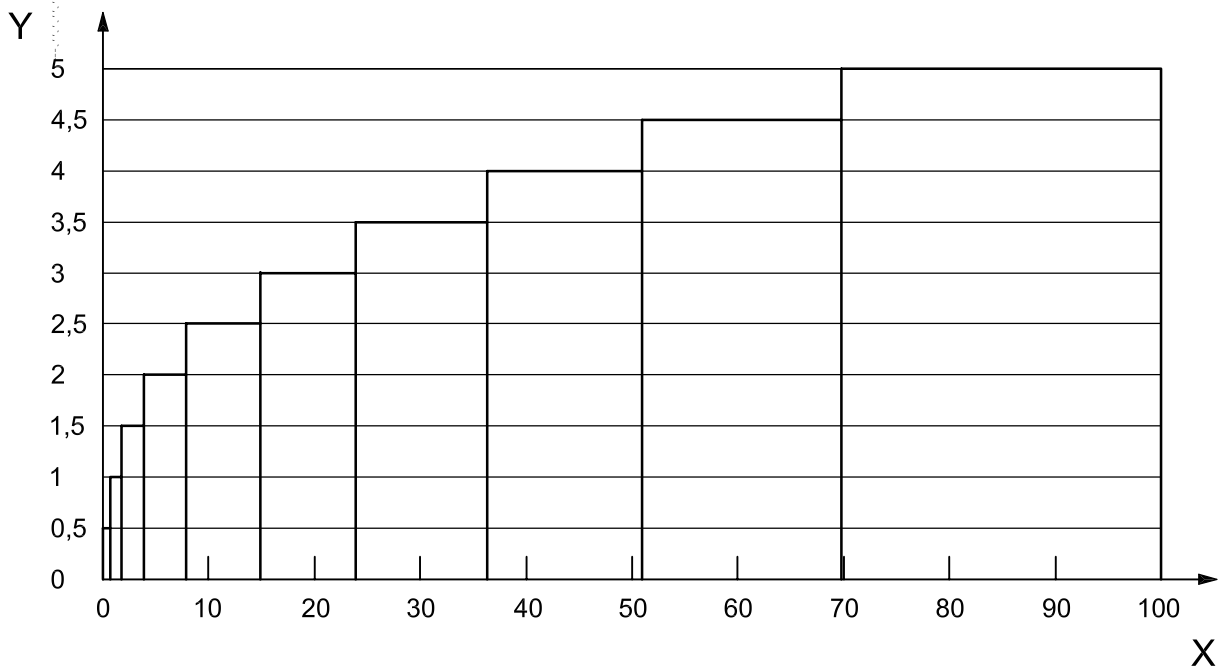
**Table A.1 — Stone chipping ratings in accordance with ISO 20567-1**

Rating	Damaged area %	Undamaged area %	Upper limit of damaged area after linear interpolation %	Lower limit of damaged area after linear interpolation %	Upper limit of undamaged area after linear interpolation %	Lower limit of undamaged area after linear interpolation %
0	0	100	0,00	0,00	100,00	100,00
0,5	0,2	99,8	0,60	0,00	100,00	99,40
1	1,0	99,0	1,75	0,60	99,40	98,25
1,5	2,5	97,5	4,00	1,75	98,25	96,00
2	5,5	94,5	8,10	4,00	96,00	91,90
2,5	10,7	89,3	14,95	8,10	91,90	85,05
3	19,2	80,8	24,10	14,95	85,05	75,90
3,5	29,0	71,0	36,40	24,10	75,90	63,60
4	43,8	56,2	51,05	36,40	63,60	48,95
4,5	58,3	41,7	69,80	51,05	48,95	30,20
5	81,3	18,7	100,00	69,80	30,20	0,00

The percentages stated in Table A.1 for the damaged and the undamaged areas were determined by means of optical imaging from the reference images defined in ISO 20567-1. The values for the damaged area in the second column of Table A.1 are identical with the percentages stated below the corresponding reference images in ISO 20567-1.

Figure A.1 relates the ratings to the sizes of the damaged areas.

.....



**Key**  
X damaged area (%)  
Y rating

**Figure A.1 — Ratings in accordance with ISO 20567-1 assigned to percentage damaged area**

## Annex B (informative)

### Example of an extended evaluation

#### B.1 General

In the example given below, the contributions of the individual layers in relation to the total damaged area are determined. The layer that accounts for the largest share of the damaged area is regarded as the main separation level. Figure B.1 shows the original image and Figure B.2 shows the original image processed after thresholding.

The different layers are shown in different colours depending on the threshold set:

- area damaged down to substrate is shown in green;
- area damaged down to electrodeposited (ED) coat is shown in red;
- area damaged down to primer is shown in blue.

#### B.2 Results of image analysis

The results of the image analysis are given in Table B.1.

**Table B.1 — Results of image analysis**

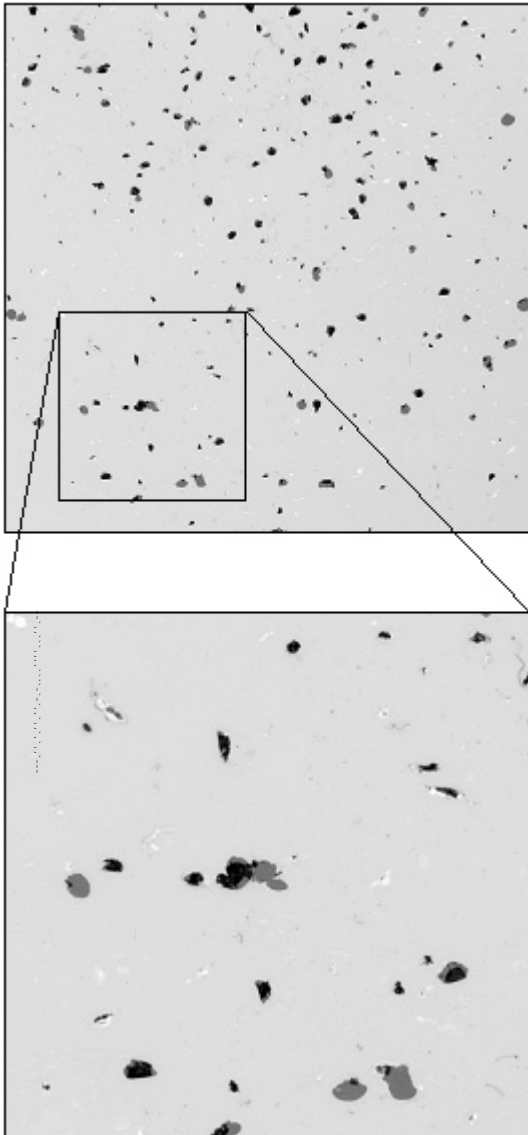
Area damaged down to substrate		Area damaged down to ED coat		Area damaged down to primer		Total damaged area		Area damaged down to substrate	
mm <sup>2</sup>	%	mm <sup>2</sup>	%	mm <sup>2</sup>	%	%	Rating	%	Rating
42,26	0,84	61,99	1,23	26,80	0,53	2,59	1,5	0,84	1,0

If possible, the extent of individual damaged spots and their percent share of the total area are determined. The data compiled in this way can be used as the basis for a number of further analyses.

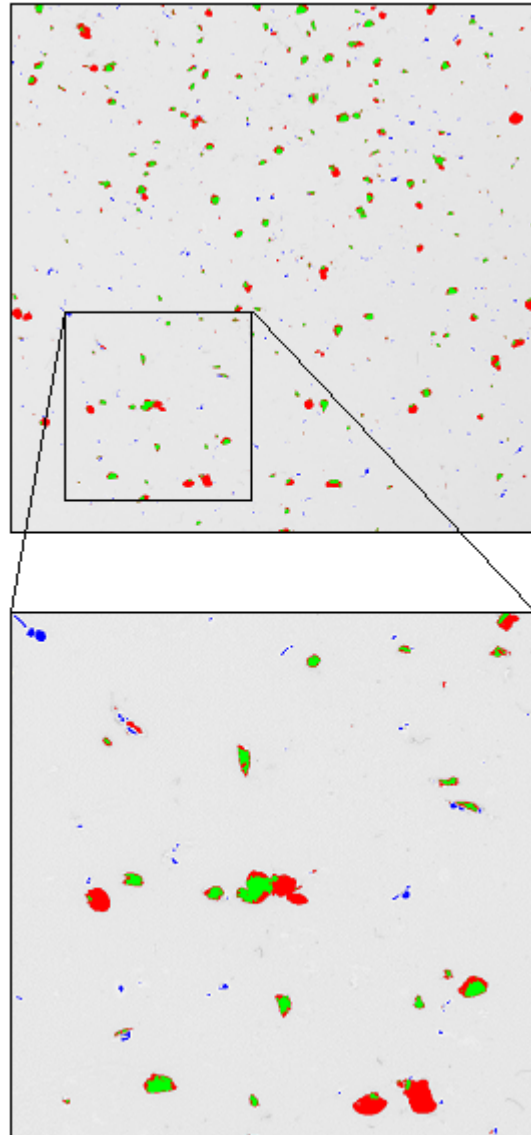
#### B.3 Image acquisition

Scanner:

- Grey scale: 256
- Resolution: 1 200 dpi
- Region of interest: 70 mm × 70 mm



**Figure B.1 — Upper photo: original image  
Lower photo: region of interest magnified**



**Figure B.2 — Upper photo: original image  
processed after thresholding  
Lower photo: region of interest magnified**



---

---

**ICS 87.040**

Price based on 8 pages