

INTERNATIONAL
STANDARD

ISO
17697

Second edition
2016-05-01

**Footwear — Test methods for uppers,
lining and insoles — Seam strength**

*Chaussures — Méthodes d'essai relatives aux tiges, doublures et
premières de propreté — Résistance des piqûres*



Reference number
ISO 17697:2016(E)

© ISO 2016



COPYRIGHT PROTECTED DOCUMENT

© ISO 2016, Published in Switzerland

All rights reserved. Unless otherwise specified, no part of this publication may be reproduced or utilized otherwise in any form or by any means, electronic or mechanical, including photocopying, or posting on the internet or an intranet, without prior written permission. Permission can be requested from either ISO at the address below or ISO's member body in the country of the requester.

ISO copyright office
Ch. de Blandonnet 8 • CP 401
CH-1214 Vernier, Geneva, Switzerland
Tel. +41 22 749 01 11
Fax +41 22 749 09 47
copyright@iso.org
www.iso.org

Contents

Page

Foreword	iv
1 Scope	1
2 Normative references	1
3 Terms and definitions	1
4 Apparatus and material	2
4.1 Method A	2
4.2 Method B	3
5 Sampling and conditioning	4
5.1 Method A	4
5.2 Method B	4
6 Test method	7
6.1 Method A	7
6.1.1 Principle	7
6.1.2 Procedure	7
6.2 Method B	8
6.2.1 Principle	8
6.2.2 Procedure	8
7 Expression of results	8
7.1 Method A	8
7.2 Method B	9
8 Test report	9
8.1 Method A	9
8.2 Method B	9
Bibliography	10

Foreword

ISO (the International Organization for Standardization) is a worldwide federation of national standards bodies (ISO member bodies). The work of preparing International Standards is normally carried out through ISO technical committees. Each member body interested in a subject for which a technical committee has been established has the right to be represented on that committee. International organizations, governmental and non-governmental, in liaison with ISO, also take part in the work. ISO collaborates closely with the International Electrotechnical Commission (IEC) on all matters of electrotechnical standardization.

The procedures used to develop this document and those intended for its further maintenance are described in the ISO/IEC Directives, Part 1. In particular the different approval criteria needed for the different types of ISO documents should be noted. This document was drafted in accordance with the editorial rules of the ISO/IEC Directives, Part 2 (see www.iso.org/directives).

Attention is drawn to the possibility that some of the elements of this document may be the subject of patent rights. ISO shall not be held responsible for identifying any or all such patent rights. Details of any patent rights identified during the development of the document will be in the Introduction and/or on the ISO list of patent declarations received (see www.iso.org/patents).

Any trade name used in this document is information given for the convenience of users and does not constitute an endorsement.

For an explanation on the meaning of ISO specific terms and expressions related to conformity assessment, as well as information about ISO's adherence to the WTO principles in the Technical Barriers to Trade (TBT) see the following URL: [Foreword - Supplementary information](#)

ISO 17697 was prepared by the European Committee Standardization (CEN) Technical Committee CEN/TC 309, *Footwear*, in collaboration with ISO Technical Committee TC 216, *Footwear*, in accordance with the agreement on technical cooperation between ISO and CEN (Vienna Agreement).

This second edition cancels and replaces the first edition (ISO 17697:2003), which has been technically revised.

Footwear — Test methods for uppers, lining and insoles — Seam strength

1 Scope

This International Standard specifies two test methods for determining the seam strength of uppers, lining or insoles, irrespective of the material, in order to assess the suitability for the end use.

These methods are as follows.

- Method A: Needle perforations. For determining the force required to pull a row of needles through an upper material, in a direction perpendicular to the row.
- Method B: Stitched seams. For determining the breaking strength of stitched seams in shoe upper and lining materials. This method is applicable to seams cut from shoes or made up to simulate footwear constructions.

2 Normative references

The following documents, in whole or in part, are normatively referenced in this document and are indispensable for its application. For dated references, only the edition cited applies. For undated references, the latest edition of the referenced document (including any amendments) applies.

ISO 7500-1, *Metallic materials — Verification of static uniaxial testing machines — Part 1: Tension/compression testing machines — Verification and calibration of the force-measuring system*

ISO 17709, *Footwear — Sampling location, preparation and duration of conditioning of samples and test pieces*

ISO 18454, *Footwear — Standard atmospheres for conditioning and testing of footwear and components for footwear*

3 Terms and definitions

For the purposes of this document, the following terms and definitions apply.

3.1

seam strength

breaking strength of a stitched seam as determined under specified conditions using a tensile testing machine

3.2

upper

materials forming the outer face of the footwear which is attached to the sole assembly and covers the upper dorsal surface of the foot

Note 1 to entry: In the case of boots, this also includes the outer face of the material covering the leg. Only the materials that are visible are included, no account should be made of underlying materials.

3.3

complete upper assembly

finished upper, fully seamed, joined or laminated as appropriate, comprising the centre material and any lining(s) together with all components such as interlinings, adhesives, membranes, foams or reinforcements, but excluding toe puffs and stiffeners

Note 1 to entry: The complete upper assembly can be flat, 2-dimensional or comprise lasted upper in the final footwear.

4 Apparatus and material

The following apparatus and material shall be used.

4.1 Method A

4.1.1 Tensile testing machine, with a jaw separation rate of (100 ± 10) mm/min, a force range appropriate to the specimen under test (this will usually be less than 500 N for footwear upper materials), capable of measuring forces to an accuracy greater than 2 % as specified by Class 2 in ISO 7500-1.

4.1.2 Needle holding jig, see [Figure 1](#), including the following.

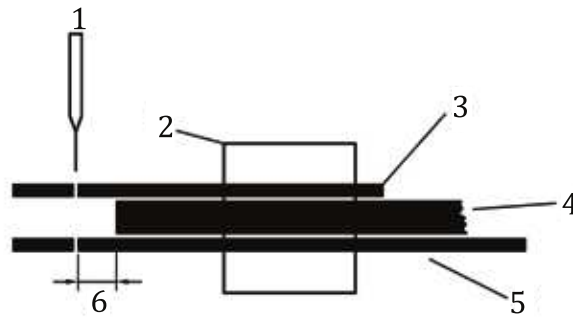
4.1.2.1 Two rectangular rigid plates, each of minimum width 30 mm and maximum thickness 6 mm. Each of the two plates is drilled with 17 holes of diameter $(1,1 \pm 0,1)$ mm. The holes shall be in a straight line parallel to and approximately 5 mm from one end of the plate. The holes should be evenly spaced so that the centres of the two extreme holes are $(26,5 \pm 0,5)$ mm apart.

4.1.2.2 One spacing plate, of width similar to the drilled plates and of thickness $(3,5 \pm 0,5)$ mm.

4.1.2.3 Means of securing the spacing plate, to the surface of one of the drilled plates such that the distance between the end of the spacing plate and the centre line of the row of holes in the other plate can be adjusted and set at $(3,0 \pm 0,1)$ mm and $(6,0 \pm 0,2)$ mm. The combination will be referred to as the lower plate.

4.1.2.4 Means of securing the other drilled plate, which will be referred to as the upper plate, to the exposed surface of the spacing plate so that the holes in both of the drilled plates are aligned.

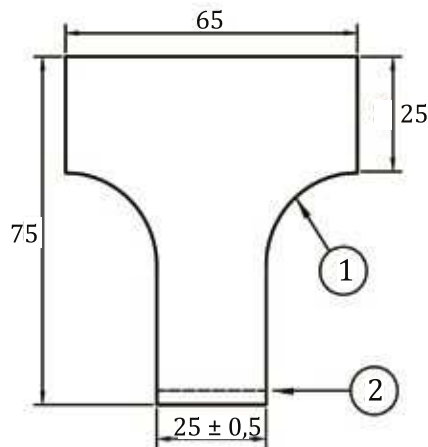
The end of one of the plates furthest from the row of holes should have means of attachment to one of the jaws of the tensile testing machine so that the rows of holes are perpendicular to the axis of the machine.

**Key**

- 1 needle
- 2 clamp
- 3 drilled plate
- 4 spacing plate
- 5 drilled plate
- 6 distance (see [4.1.2.3](#))

Figure 1 — Schematic diagram of needle holding jig (see [4.1.2](#))

Dimensions in millimetres

**Key**

- 1 20 (radius)
- 2 line of perforations

Figure 2 — Test specimen

4.1.3 Seventeen needles, normal round point (R), metric size 90 (Singer size 14)

4.1.4 Press knife, or other cutting device capable of cutting a T-shaped test specimen of the dimensions shown in [Figure 2](#).

4.2 Method B

4.2.1 Tensile testing machine, with a jaw separation rate of (100 ± 10) mm/min, a force range appropriate to the specimen under test (this will usually be up to 2 kN), capable of measuring forces to an accuracy greater than 2 % as specified by Class 2 in ISO 7500-1.

4.2.2 Small sharp hand knife or scissors, for cutting test specimens.

4.2.3 If made up seams are to be tested, a **press knife** capable of cutting test specimens, (50 ± 2) mm \times (50 ± 2) mm, is useful.

4.2.4 If made up seams are to be tested, a **sewing machine and accessories**.

5 Sampling and conditioning

5.1 Method A

5.1.1 Store the shoes or the uncut sheet material or uppers in a controlled standard atmosphere specified in ISO 18454 for a minimum of 24 h prior to testing and carry out the test in this atmosphere.

5.1.2 Cut six test specimens with the dimensions specified in [Figure 2](#). Three shall be cut with the base edge of the T parallel to the along direction of the material [backbone direction for leather and selvage (warp) or machine direction for non-leather materials] and three shall be cut perpendicular to this.

Prepare test pieces from complete upper assemblies when the lining material is permanently attached to the upper material.

For materials, cut test specimens from a range of positions across the full usable width and length of the sheet material. For a material with a woven structure, this will ensure that no two test specimens contain the same warp or weft threads.

For test specimens, cut from footwear uppers avoid any areas containing perforations, cut three test specimens with the base edge of the T parallel to the X-axis of the upper as defined in ISO 17709 and three with the base edge perpendicular to the X-axis.

It can be impossible to cut a test specimen of sufficient size from certain types of footwear especially children's and the test specimen size shall not be reduced. If it is not possible to cut the correct size test specimen from a shoe upper, the materials themselves shall be tested.

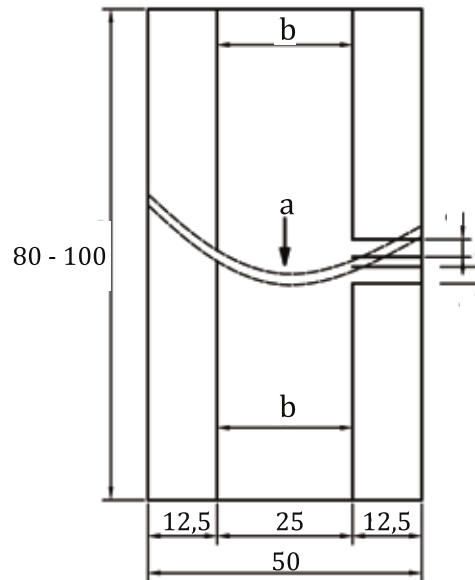
5.1.3 Mark the along direction on each of the test specimens.

5.2 Method B

5.2.1 Store the shoes or the uncut sheet material or uppers in a controlled standard atmosphere specified in ISO 18454 for a minimum of 24 h prior to testing and carry out the test in this atmosphere.

5.2.2 Test specimens cut from shoes or uppers.

5.2.2.1 Where possible, use the knife ([4.2.2](#)) to cut two rectangular test specimens of dimensions (90 ± 10) mm \times (50 ± 2) mm from the upper, including any lining materials, such that the seam is approximately mid-way between the two ends of the test specimen (see [Figure 3](#)).

**Key**

- a seams
- b cuts

Figure 3 — Test specimen cut from shoe

5.2.2.2 If the shoe upper is too small to allow this, then the size of test specimen may be reduced, but the width of the central portion, see [5.2.2.3](#) and [Figure 3](#), shall not be less than 10 mm.

5.2.2.3 Make cuts in each test specimen parallel to the longer edges from points 3 mm from the seam to the edges of the material, to provide a test specimen having a central portion of width $(25 \pm 0,5)$ mm and two edge pieces of width $(12,5 \pm 0,5)$ mm (see [Figure 3](#)).

5.2.3 Test specimens prepared by making up seams.

5.2.3.1 Use either the hand knife or scissors ([4.2.2](#)) or press knife ([4.2.3](#)) to cut pieces, (50 ± 2) mm \times (50 ± 2) mm, of each material to be used in the construction. The number of pieces of material required will vary according to the construction of the seam. This may consist of two pieces of the same or different upper materials stitched together and may include one or more lining materials. Reinforcing tapes may also be included. Cut sufficient pieces to allow the preparation of three seamed test specimens for each direction of test. If required, materials may be skived before seaming.

The test direction, along or across, is at 90° to the direction of the seam. The number of directions of test will vary according to the upper construction. Separate tests in the along and across directions can be sufficient, but in some cases, test specimens can need to be prepared with along and across directions combined or with material cut on the bias.

For non-leather materials, cut test specimens from a range of positions across the full usable width and length of the sheet material. For a material with a woven structure, this shall prevent any two test specimens containing the same warp or weft threads.

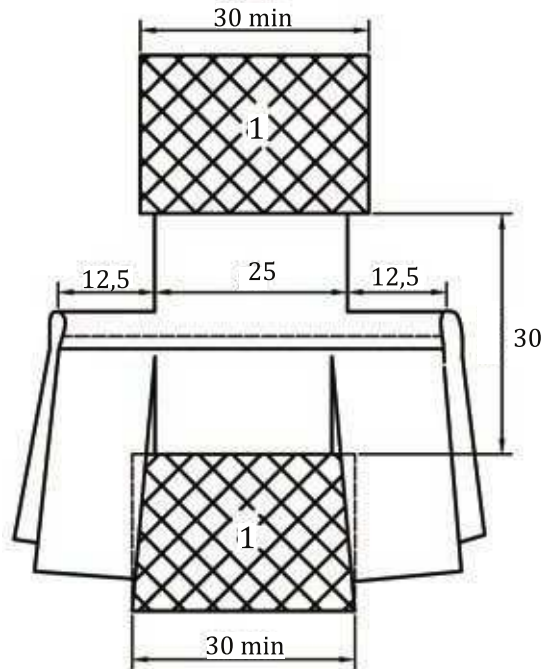
5.2.3.2 Use the sewing machine ([4.2.4](#)) to stitch together the squares of material to produce three test seams for each direction of test. The choice of type of seam, needle size and type, thread and stitch density shall be selected to simulate the shoe construction of interest. Where these are not known, guidance

can be obtained from [Table 1](#). Set the sewing machine thread tension such that the stitch lock is in the desired position.

Table 1 — Guidance on seam constructions

		Uppers			Linings
		Leather	Coated fabric	Textiles	
Needle	size metric (UK)	100 (16)	100 (16)	100 (16)	100 (16)
	Type	narrow wedge or other cutting point	round point, round triangular tipped or extra narrow wedge	round point, round triangular tipped or extra narrow wedge	as for upper
Thread	Type	polyamide, polyester or core spun	polyamide, polyester or core spun	polyamide, polyester or core spun	polyamide, polyester or core spun
	ticket n°.	36 or 40	36 or 40	36 or 40	36 or 40
	TEX	85 or 75	—	—	—
Stitches per 25 mm		14 to 16	14 to 16	14 to 16	14 to 16
Seam	Type	lapped or closed	lapped or closed	lapped or closed	—
	allowance	2 mm	3 mm	3 mm	as for upper
Underlay allowance		9 mm	9 mm	9 mm	—

Dimensions in millimetres



Key

1 jaw

Figure 4 — Clamped test specimen

5.2.3.3 Make cuts in each test specimen perpendicular to the seam from points 3 mm from the seam to the edges of the material, to provide a test specimen having a central portion of width $(25 \pm 0,5)$ mm and two edge pieces of width $(12,5 \pm 0,5)$ mm (see [Figure 4](#)).

6 Test method

6.1 Method A

6.1.1 Principle

A straight row of needles is pushed through the full thickness of a T-shaped test specimen so that it is parallel to and a fixed distance from the base of the T. A tensile force is then applied perpendicular to the row of needles to pull the test specimen free. The maximum force recorded is divided by the width of the test specimen to give the strength perpendicular to the needle perforations.

6.1.2 Procedure

6.1.2.1 Adjust the needle jig (4.1.2) so that the distance between the end of the spacing plate and the centre line of the rows of holes in the other two plates is as follows.

Elastics and loose fabrics	$(6,0 \pm 0,2)$ mm
All other materials	$(3,0 \pm 0,1)$ mm

6.1.2.2 Place one of the needles (4.1.3) into each of the 17 holes in the upper plate (4.1.2.1) so that none of the needle points are protruding beyond the inner side of this plate and the thread groove of each needle faces towards the spacing plate.

6.1.2.3 Place one of the test specimens in the needle jig so that the base of the T abuts against the end of the spacing plate and the central hole of the rows in the plates (4.1.2.1) is in line with the centre of the width of the test specimen.

6.1.2.4 Push each of the 17 needles through the full thickness of the test specimen and the hole in the other plate until the shoulder of the needle prevents further movement. Take care to ensure that the position of the test specimen relative to the needle jig remains unchanged as the needles are inserted.

6.1.2.5 Clamp the needle jig centrally in one jaw of the tensile testing machine so that the row of needles are perpendicular to the axis of the machine. Clamp at least 20 mm of the free length of the test specimen in the centre of the other jaw.

6.1.2.6 Zero the force measuring system of the tensile testing machine and operate it so that the jaws separate at a speed of (100 ± 10) mm/min.

6.1.2.7 Record the maximum force exerted on the jaws during the test in Newtons, to the nearest 1 N, and the type of failure of the test specimen as follows:

- a) tearing along the line of needle perforations;
- b) pulling off of yarns running parallel to the row of needles;
- c) tearing of each needle through the material;
- d) failure away from the needle perforations.

Occasionally, a test specimen can fail in more than one way, in which case, record all the types of failure together with an indication of their relative amounts.

6.1.2.8 Repeat the procedure in 6.1.2.3 to 6.1.2.7 for the remaining five test specimens.

6.2 Method B

6.2.1 Principle

A test specimen containing a stitched seam is gradually stretched by a tensile machine in a direction perpendicular to the seam until failure occurs. The breaking strength and type of breakdown are determined.

6.2.2 Procedure

6.2.2.1 Measure the width of the central portion of the test specimens in mm to the nearest 0,5 mm, and record this value as *W*.

6.2.2.2 Adjust the tensile testing machine ([4.2.1](#)) so that the jaws are approximately 30 mm apart.

- a) For test specimens cut from uppers which have a lining which is not attached to the reverse side, peel the lining away from the outer to allow the outer to be gripped in the jaws of the tensile machine. The lining shall not be peeled away over the seam.
- b) For test specimens cut from uppers which have an attached lining, grip both upper and lining in the jaws.

6.2.2.3 Clamp, midway between the jaws, the central portion of a test specimen between the jaws such that the seam is 15 mm from each jaw and is parallel to the clamping edges. The 12,5 mm edge strips shall not be clamped. They will hang free (see [Figure 4](#)).

6.2.2.4 Operate the tensile testing machine so that the jaws separate at a speed of (100 ± 10) mm/min.

6.2.2.5 When the test specimen fails, record the force in Newtons, to the nearest 1 N, at which failure occurs (breaking force).

6.2.2.6 Note the type(s) of failure as the following:

- a) material failed at seam;
- b) thread pulled out from seam;
- c) thread failed;
- d) material failed, away from seam.

6.2.2.7 Repeat the procedure in [6.2.2.3](#) to [6.2.2.5](#) for the remaining test specimens.

7 Expression of results

7.1 Method A

7.1.1 Calculate the arithmetic means of the maximum forces recorded in [6.1.2.7](#) for the three test specimens cut in the along direction and the three test specimens cut in the across direction.

7.1.2 For each direction: Divide the arithmetic mean maximum force ([7.1.1](#)) by the width of the test specimen, 25 mm, to give the strength, in N/mm, perpendicular to the needle perforations.

7.2 Method B

7.2.1 For each test specimen, calculate the seam strength, in N/mm to the nearest 1 N/mm, by dividing the breaking force (6.2.2.5) by the test specimen width, W (6.2.2.1).

7.2.2 For made up seams, calculate the arithmetic mean of the seam strengths for each direction of test (5.2.3.1).

8 Test report

8.1 Method A

The test report shall include the following information:

- a) the strength of the material in each direction, as calculated in 7.1.2;
- b) the types of failure that occurred, as recorded in 6.1.2.7;
- c) if testing finished footwear or uppers, a description of the style of shoe tested including commercial style codes;
- d) a description of the material, including commercial reference if known;
- e) a description of any lining material or other reinforcement present;
- f) a reference to this International Standard, i.e. ISO 17697:2016, and the test method selected;
- g) the date of testing;
- h) any deviations from this standard test method.

8.2 Method B

The test report shall include the following information:

- a) for seams cut from shoes, the individual seam strength values, as calculated in 7.2.1;
- b) for made up seams, the mean seam strength for each direction of test, as calculated in 7.2.2;
- c) the type or types of failure that occurred, as recorded in 6.2.2.6;
- d) for seams cut from shoes, a general description of the seam construction and commercial style code of the shoe;
- e) for made up seams, details of the seam construction, including seam type, material type including commercial reference, thread type and size and details of any skiving or reinforcement;
- f) a reference to this International Standard, i.e. ISO 17697:2016, and the test method selected;
- g) the date of testing;
- h) any deviations from this standard test method.

Bibliography

- [1] ISO 19952, *Footwear — Vocabulary*

