

INTERNATIONAL
STANDARD

ISO
17235

IULTCS/IUP
36

First edition
2002-12-15

**Leather — Physical and mechanical
tests — Determination of softness**

Cuir — Essais physiques et mécaniques — Détermination de la souplesse



Reference number
ISO 17235:2002(E)
IULTCS/IUP 36

© ISO 2002

PDF disclaimer

This PDF file may contain embedded typefaces. In accordance with Adobe's licensing policy, this file may be printed or viewed but shall not be edited unless the typefaces which are embedded are licensed to and installed on the computer performing the editing. In downloading this file, parties accept therein the responsibility of not infringing Adobe's licensing policy. The ISO Central Secretariat accepts no liability in this area.

Adobe is a trademark of Adobe Systems Incorporated.

Details of the software products used to create this PDF file can be found in the General Info relative to the file; the PDF-creation parameters were optimized for printing. Every care has been taken to ensure that the file is suitable for use by ISO member bodies. In the unlikely event that a problem relating to it is found, please inform the Central Secretariat at the address given below.

© ISO 2002

All rights reserved. Unless otherwise specified, no part of this publication may be reproduced or utilized in any form or by any means, electronic or mechanical, including photocopying and microfilm, without permission in writing from either ISO at the address below or ISO's member body in the country of the requester.

ISO copyright office
Case postale 56 • CH-1211 Geneva 20
Tel. + 41 22 749 01 11
Fax + 41 22 749 09 47
E-mail copyright@iso.org
Web www.iso.org

Published in Switzerland

Contents

	Page
Foreword	iv
1 Scope	1
2 Normative references	1
3 Principle	1
4 Apparatus	1
5 Sampling and sample preparation	2
6 Procedure	2
7 Test report	3
Annex A (informative) Sources of apparatus	4

Foreword

ISO (the International Organization for Standardization) is a worldwide federation of national standards bodies (ISO member bodies). The work of preparing International Standards is normally carried out through ISO technical committees. Each member body interested in a subject for which a technical committee has been established has the right to be represented on that committee. International organizations, governmental and non-governmental, in liaison with ISO, also take part in the work. ISO collaborates closely with the International Electrotechnical Commission (IEC) on all matters of electrotechnical standardization.

International Standards are drafted in accordance with the rules given in the ISO/IEC Directives, Part 2.

The main task of technical committees is to prepare International Standards. Draft International Standards adopted by the technical committees are circulated to the member bodies for voting. Publication as an International Standard requires approval by at least 75 % of the member bodies casting a vote.

Attention is drawn to the possibility that some of the elements of this document may be the subject of patent rights. ISO shall not be held responsible for identifying any or all such patent rights.

ISO 17235 was prepared by the Physical Test Commission of the International Union of Leather Technologists and Chemists Societies (IUP Commission, IULTCS) in collaboration with the European Committee for Standardization (CEN) Technical Committee CEN/TC 289, *Leather*, the secretariat of which is held by UNI, in accordance with the Agreement on technical cooperation between ISO and CEN (Vienna Agreement). It is based on IUP 36 originally published in *J. Soc. Leather Tech. Chem.* **78**, p. 66, (1994) and declared an official method of the IULTCS in 1995. An updated version was published in *J. Soc. Leather Tech. Chem.* **82**, p. 238, (1998) and a further revision was published in *J. Soc. Leather Tech. Chem.* **84**, p. 377, (2000) and reconfirmed as an official method in March 2001. This latest revision has an alteration in the scope and the name of supplier in the annex.

Leather — Physical and mechanical tests — Determination of softness

1 Scope

This International Standard specifies a non destructive method for determining the softness of a leather. It is applicable to all non-rigid leathers. e.g. Shoe upper leather, upholstery leather, leathersgoods leather and apparel leather.

2 Normative references

The following referenced documents are indispensable for the application of this document. For dated references, only the edition cited applies. For undated references, the latest edition of the referenced document (including any amendments) applies.

ISO 2418 *Leather – Chemical, physical and mechanical and fastness tests – Sampling location*

ISO 2419 *Leather – Physical and mechanical tests – Sample preparation and conditioning*

3 Principle

A cylindrical rod of defined mass is lowered at a specified rate onto a securely clamped area of leather. The distension of the leather produced is recorded as the softness.

4 Apparatus

4.1 Test machine, shown diagrammatically in Figure 1, including the parts described in 4.1.1 to 4.1.7.

4.1.1 Circular aperture, A, diameter 35,0 mm \pm 0,1 mm.

4.1.2 Metal rings, able to fit into aperture A and reduce the diameter of the aperture to 25,0 mm \pm 0,1 mm and 20,0 \pm 0,1 mm respectively.

NOTE The apertures described above are more conveniently referred to by their nominal diameters of 35 mm, 25 mm and 20 mm respectively.

4.1.3 Clamps, B, capable of holding the leather securely both before the load pin is released and when the maximum force is applied, whilst leaving the portion over the aperture free to move.

4.1.4 Cylindrical load pin, C, diameter 4,9 mm \pm 0,1 mm and length 11,5 mm \pm 0,1 mm rigidly attached to a cylindrical mass, D. The total mass of load pin and cylindrical mass shall be 530 g \pm 10 g.

4.1.5 Means of guiding the load pin, such that the load pin acts perpendicularly to the leather surface and the vertical travel of the load pin is restricted to a distance 11,5 mm \pm 0,1 mm.

4.1.6 Means of lowering the load pin, such that the load pin travels its full permitted distance of $11,5 \text{ mm} \pm 0,1 \text{ mm}$ in $1,5 \text{ s} \pm 0,5 \text{ s}$.

4.1.7 Gauge, reading to $0,1 \text{ mm}$, to directly measure the distension of the leather by the load pin.

4.2 Flat rigid metal disc, minimum diameter 60 mm.

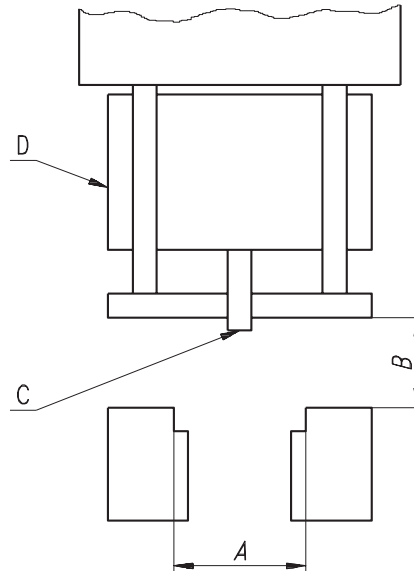


Figure 1 — Diagrammatic layout of the test machine

5 Sampling and sample preparation

Condition the leather in accordance with ISO 2419.

NOTE It may be possible to take measurements without physically cutting a sample from the hide or skin.

6 Procedure

6.1 Select the aperture from 35 mm, 25 mm or 20 mm.

NOTE It is suggested that the apertures are used as follows:

- 35 mm - measurement of firmer leathers, for example, shoe upper leathers;
- 25 mm - measurement of leathers of moderate softness, for example, upholstery leathers and softer shoe upper leathers;
- 20 mm - measurement of softer leathers, for example, apparel leathers.

- 6.2** Open the test machine, and place the metal disc (4.2) over the circular aperture.
- 6.3** Raise the load pin and close the test machine to clamp the metal disc in position.
- 6.4** Release the load pin, allow the reading on the gauge to become steady and set to zero. Open the test machine and remove the metal disc.
- 6.5** Place the area of the leather defined in ISO 2418 over the aperture ensuring that the leather lies flat, there are no obvious defects such as flay cuts or scar tissue over the aperture and that there is sufficient leather to allow effective clamping.
- 6.6** Raise the load pin and close the test machine to clamp the leather in position.
- 6.7** Release the load pin, allow the reading on the gauge to become steady and record the reading. Open the test machine and remove the leather.
- 6.8** Take three readings and report the mean and the range.

7 Test report

The test report shall include the following:

- a) reference to this International Standard, i.e. ISO 17235:2002;
- b) the nominal aperture(s) used in tests;
- c) identification of the areas tested and the individual and mean deflections recorded on the gauge for each aperture used;
- d) the standard atmosphere used for conditioning and testing as given in ISO 2419 (i.e., 20 °C/65 % rh or 23 °C/ 50% rh);
- e) any deviations from the method specified in this International Standard;
- f) full details for identification of the sample and any deviations from ISO 2418 with respect to sampling.

Annex A
(informative)

Sources of apparatus

Examples of suitable products available commercially are given below. This information is given for the convenience of users of this International Standard and does not constitute an endorsement by ISO of these products.

The recommended apparatus is the ST 300 softness tester manufactured for example by

MSA Engineering Systems Ltd., 41 Lower Slack, Wainstalls, Halifax, West Yorkshire, HX2 7TJ, United Kingdom.

ICS 59.140.30

Price based on 4 pages

© ISO 2002 – All rights reserved