
**Food products — Determination of the
total nitrogen content by combustion
according to the Dumas principle and
calculation of the crude protein
content —**

**Part 1:
Oilseeds and animal feeding stuffs**

*Produits alimentaires — Détermination de la teneur en azote total par
combustion selon le principe Dumas et calcul de la teneur en protéines
brutes —*

Partie 1: Graines oléagineuses et aliments des animaux



Reference number
ISO 16634-1:2008(E)

© ISO 2008

PDF disclaimer

This PDF file may contain embedded typefaces. In accordance with Adobe's licensing policy, this file may be printed or viewed but shall not be edited unless the typefaces which are embedded are licensed to and installed on the computer performing the editing. In downloading this file, parties accept therein the responsibility of not infringing Adobe's licensing policy. The ISO Central Secretariat accepts no liability in this area.

Adobe is a trademark of Adobe Systems Incorporated.

Details of the software products used to create this PDF file can be found in the General Info relative to the file; the PDF-creation parameters were optimized for printing. Every care has been taken to ensure that the file is suitable for use by ISO member bodies. In the unlikely event that a problem relating to it is found, please inform the Central Secretariat at the address given below.



COPYRIGHT PROTECTED DOCUMENT

© ISO 2008

All rights reserved. Unless otherwise specified, no part of this publication may be reproduced or utilized in any form or by any means, electronic or mechanical, including photocopying and microfilm, without permission in writing from either ISO at the address below or ISO's member body in the country of the requester.

ISO copyright office
Case postale 56 • CH-1211 Geneva 20
Tel. + 41 22 749 01 11
Fax + 41 22 749 09 47
E-mail copyright@iso.org
Web www.iso.org

Published in Switzerland

Contents

Page

| | |
|----------------------------------------------------------------------------------------------------|----|
| Foreword..... | iv |
| Introduction | v |
| 1 Scope | 1 |
| 2 Normative references | 1 |
| 3 Terms and definitions..... | 1 |
| 4 Principle | 2 |
| 5 Reagents | 2 |
| 6 Apparatus | 3 |
| 7 Sampling..... | 4 |
| 8 Preparation of test sample..... | 4 |
| 9 Procedure | 4 |
| 9.1 General..... | 4 |
| 9.2 Test portion | 4 |
| 9.3 Control of oxygen demand | 5 |
| 9.4 Calibration | 5 |
| 9.5 Determination..... | 5 |
| 9.6 Detection and integration | 6 |
| 10 Calculation and expression of results..... | 6 |
| 10.1 Calculation..... | 6 |
| 10.1.1 Nitrogen content | 6 |
| 10.1.2 Crude protein content | 6 |
| 10.2 Expression of results | 7 |
| 11 Precision..... | 7 |
| 11.1 Interlaboratory tests | 7 |
| 11.2 Repeatability..... | 7 |
| 11.3 Reproducibility..... | 7 |
| 12 Test report | 7 |
| Annex A (informative) Flowchart for the basic design of a Dumas apparatus | 8 |
| Annex B (informative) Schemes of suitable types of Dumas apparatus | 9 |
| Annex C (informative) Equipment calibration | 12 |
| Annex D (informative) Examples of factors for converting nitrogen content to protein content | 14 |
| Annex E (informative) Result of collaborative studies | 15 |
| Annex F (informative) Relationship between Dumas nitrogen and Kjeldahl nitrogen..... | 24 |
| Bibliography | 28 |

Foreword

ISO (the International Organization for Standardization) is a worldwide federation of national standards bodies (ISO member bodies). The work of preparing International Standards is normally carried out through ISO technical committees. Each member body interested in a subject for which a technical committee has been established has the right to be represented on that committee. International organizations, governmental and non-governmental, in liaison with ISO, also take part in the work. ISO collaborates closely with the International Electrotechnical Commission (IEC) on all matters of electrotechnical standardization.

International Standards are drafted in accordance with the rules given in the ISO/IEC Directives, Part 2.

The main task of technical committees is to prepare International Standards. Draft International Standards adopted by the technical committees are circulated to the member bodies for voting. Publication as an International Standard requires approval by at least 75 % of the member bodies casting a vote.

Attention is drawn to the possibility that some of the elements of this document may be the subject of patent rights. ISO shall not be held responsible for identifying any or all such patent rights.

ISO 16634-1 was prepared by Technical Committee ISO/TC 34, *Food products*.

ISO 16634 consists of the following parts, under the general title *Food products — Determination of the total nitrogen content by combustion according to the Dumas principle and calculation of the crude protein content*:

— *Part 1: Oilseeds and animal feeding stuffs*

A part 2 on cereals, pulses and milled cereal products is in preparation.

Introduction

For a long time the Kjeldahl method has been the most frequently used method for the determination of protein content of food products. However, in recent years, the Kjeldahl method has increasingly been replaced by the Dumas method, which is faster and does not use dangerous chemicals. Although the principles of the two methods are different, both measure the nitrogen content of the product. Nitrogen can be converted into protein content by using an appropriate factor. The value of this factor varies with the relative amounts of different proteins and their amino-acid composition in the given product.

Neither the Dumas nor the Kjeldahl method distinguishes between protein and non-protein nitrogen. In most cases, results obtained by the Dumas method are slightly higher than those of the Kjeldahl method. This is due to the fact that the Dumas method measures almost all of the non-protein nitrogen, whereas the Kjeldahl method measures only a part of it.

Taking into consideration that the calculated protein content of a product by both methods only approximates the true value, it is a matter of discretion which one is accepted. The most appropriate solution should be the use of a second factor for the elimination of the systematic error caused by the non-protein nitrogen content of the different products. However, this second factor has to be determined for each product, like existing factors, which show the ratio of the protein to the nitrogen content.

Food products — Determination of the total nitrogen content by combustion according to the Dumas principle and calculation of the crude protein content —

Part 1: Oilseeds and animal feeding stuffs

1 Scope

This part of ISO 16634 specifies a method for the determination of the total nitrogen content and the calculation of crude protein content of oilseeds and animal feeding stuffs.

This method, like the Kjeldahl method, does not distinguish between protein nitrogen and non-protein nitrogen. For the calculation of protein content, various conversion factors are used (see Annex D).

This method is not applicable to milk and milk products, for which a method is specified in ISO 14891|IDF 185^[10].

2 Normative references

The following referenced documents are indispensable for the application of this document. For dated references, only the edition cited applies. For undated references, the latest edition of the referenced document (including any amendments) applies.

ISO 664, *Oilseeds — Reduction of laboratory sample to test sample*

ISO 665, *Oilseeds — Determination of moisture and volatile matter content*

ISO 771, *Oilseed residues — Determination of moisture and volatile matter content*

ISO 6496, *Animal feeding stuffs — Determination of moisture and other volatile matter content*

ISO 6498, *Animal feeding stuffs — Preparation of test samples*

3 Terms and definitions

For the purposes of this document, the following terms and definitions apply.

3.1

nitrogen content

mass fraction of the total nitrogen determined by the procedure specified in this part of ISO 16634

NOTE The mass fraction is expressed as a percentage.

3.2

crude protein content

nitrogen content (3.1) multiplied by a factor, usually 6,25

NOTE 1 A listing of other factors for possible use with various commodities is given in Annex D.

NOTE 2 The factors for calculation of crude protein content from the total content of nitrogen are derived from the Kjeldahl method which is the reference method for the determination of total nitrogen content. As the method uses the same factors as the Kjeldahl method, the use of these factors has to be verified due to the slight difference in results between the Kjeldahl and Dumas methods.

4 Principle

Samples are converted to gases by heating in a combustion tube which gasifies samples. Interfering components are removed from the resulting gas mixture. The nitrogen compounds in the gas mixture or a representative part of them are converted to molecular nitrogen, which is quantitatively determined by a thermal conductivity detector. The nitrogen content is calculated by a microprocessor.

5 Reagents

Use only reagents of recognized analytical grade, or reagents of equivalent purity as specified by instrument manufacturers. Except for the reference materials (5.12), all reagents shall be free from nitrogen.

5.1 Carrier gas(es): use one of 5.1.1 and 5.1.2.

5.1.1 Carbon dioxide, as pure as possible and of minimum volume fraction, $\varphi(\text{CO}_2) \geq 99,99 \%$.

5.1.2 Helium, as pure as possible and of minimum volume fraction, $\varphi(\text{He}) \geq 99,99 \%$.

5.2 Oxygen, as pure as possible and of minimum volume fraction, $\varphi(\text{O}_2) \geq 99,99 \%$.

5.3 Sulfur dioxide and halogen absorbent, to eliminate any sulfur from the sample [e.g. lead chromate (PbCrO_4) or steel wool].

5.4 Copper oxide platinum catalyst (filling material for the post-combustion tube).

Platinum catalyst [5 % of Pt on alumina (Al_2O_3)] is blended with CuO at a ratio of 1:7 parts or 1:8 parts according to the manufacturer's recommendations.

To prevent separation as a result of the different bulk densities of the two materials, it is recommended not to prepare the mixture before filling the tube. It is advisable to pour the platinum catalyst and copper oxide simultaneously into the post-combustion tube using a suitable funnel.

5.5 Silver or copper wool.

This should be disaggregated before being inserted in the post-combustion or reduction tube.

5.6 Silica (quartz) or glass wool or cotton wool, as recommended by the instrument manufacturer.

5.7 Copper (wire, cuttings, turnings or powder), or tungsten for the reduction tube.

The use of copper wires can improve the precision of analytical results for samples with low nitrogen contents (about 1 % mass fraction).

5.8 Diphosphorus pentoxide (P_2O_5) or granulated magnesium perchlorate [$\text{Mg}(\text{ClO}_4)_2$], or another suitable support material, to fill the drying tubes.

5.9 Hollow corundum spheres or aluminium oxide pellets, for the combustion tube.

5.10 Copper oxide (CuO), as filling material for the combustion tube.

5.11 Sodium hydroxide (NaOH), on a support material.

5.12 Aspartic acid (C₄H₇NO₄) or **ethylenediaminetetraacetic acid** (C₁₀H₁₆N₂O₈) or **glutamic acid** (C₅H₉NO₄) or **hippuric acid** (C₉H₉NO₃) **standard**, or other suitable reference materials with known, constant, certified nitrogen content.

Minimum recovery should be 99 % mass fraction.

5.13 Light petroleum, with boiling range between 30 °C and 60 °C, or **acetone** or **ethanol**.

6 Apparatus

Usual laboratory equipment and, in particular, the following.

6.1 Analytical balance, capable of weighing to the nearest 0,000 1 g.

6.2 Grinding device, appropriate to the nature of the sample.

6.3 Sieve, of nominal size of openings 800 µm or 1 mm, made of non-ferrous material.

6.4 Crucibles (e.g. made of stainless steel, quartz, ceramic or platinum) or **tin capsules** or **nitrogen-free filter paper for pressing pellets**, suitable for the Dumas apparatus used.

NOTE 1 Several commercial instruments are provided with an automatic sampler.

NOTE 2 Some solid samples (e.g. powders) can be pressed to form pellets.

6.5 Dumas apparatus¹⁾, fitted with a furnace able to maintain a given temperature greater than or equal to 850 °C, with a thermal conductivity detector and suitable device for signal integration.

Suitable Dumas apparatus operates according to the general flowchart given in Annex A, although different arrangements and components may be used.

NOTE Schemes of three available instruments are shown as examples in Figures B.1, B.2, and B.3.

To avoid leaks, the sealing O-rings shall be slightly lubricated with high-vacuum grease prior to installation.

Experience has shown that it is important to clean all pieces of silica and glassware carefully, and to remove fingerprints from the tubes using a suitable solvent (e.g. acetone) before inserting them in the furnace.

1) Elementar Analysensysteme, Sumika Chemical Analysis Service, and LECO Instruments produce suitable equipment available commercially. This information is given for the convenience of users of this International Standard and does not constitute an endorsement by ISO of this equipment. Equivalent products may be used if they can be shown to lead to the same results.

7 Sampling

A representative sample should have been sent to the laboratory. It should not have been damaged or changed during transport or storage.

Sampling is not part of the method specified in this part of ISO 16634. Recommended sampling methods are given in ISO 542^[1] for oilseeds, in ISO 5500^[3] for oilseed residues, and in ISO 6498 for animal feeding stuffs.

8 Preparation of test sample

The laboratory sample shall be prepared in such a way that a homogeneous test sample is obtained, which is representative of the oilseeds (see ISO 664) or animal feeding stuff (see ISO 6498).

Using a suitable grinding device (6.2), grind the laboratory sample. Generally, pass the ground material through a sieve (6.3) of nominal size of openings 800 µm for small sample sizes (under 300 mg), or a sieve of nominal size of openings 1 mm, for larger sample sizes (300 mg or more)^[15]. Mills that produce particle sizes meeting the specifications given in Table 1 will give acceptable results.

Table 1 — Required particle size

| Nominal size of sieve openings µm | Amount passing through sieve % mass fraction |
|--------------------------------------|-------------------------------------------------|
| 710 | 100 |
| 500 | 95 to 100 |
| 200 | 85 or less |

Grinding may result in moisture loss and therefore the moisture content of the ground sample should also be analysed when reporting nitrogen or protein values to dry matter or a constant moisture basis. Determination of the moisture shall be carried out according to ISO 665, ISO 771 or ISO 6496.

The grinder efficiency may be checked by replicate preparation of ground samples of a 2+1 mixture of corn and soya seeds. The expected coefficient of variation should be less than 2 % mass fraction.

9 Procedure

9.1 General

Carefully follow the manufacturer's instructions for instrument set-up, optimization, calibration and operation. Switch the instrument on and allow it to stabilize as defined in local procedures.

An instrument performance test should be made daily, using the reference material (5.12). The recovery of nitrogen should be > 99,0 % mass fraction.

9.2 Test portion

Weigh, to the nearest 0,000 1 g, at least 0,1 g of the test sample into a crucible or tin capsule or nitrogen-free filter paper for pressing pellets (6.4). For samples low in protein (< 1 % mass fraction), the amount of the test portion may be increased up to 3,5 g, depending on both the type of the Dumas equipment used and the nature of the test portion.

Depending on the type of equipment used, if the samples contain over 17 % mass fraction moisture, it may be necessary to dry them before analysis.

Lower masses may be necessary for very high protein content samples or where only very small amounts of sample are available. In the case of masses less than 0,1 g, a validation shall be performed.

9.3 Control of oxygen demand

Control oxygen demand, in particular the flow, according to the instructions of the material supplier.

Conduct as many blanks as necessary to stabilize the equipment, each using an equivalent mass of sucrose in place of the sample, with each set of nitrogen or protein determinations to mimic the test sample run. The sucrose blank provides the amount of nitrogen that is introduced by the atmospheric gases and is trapped within a powdered organic material source. Use the mean value of the atmospheric blank determinations as an error correction in the calculation of the nitrogen or protein determination of each test sample.

9.4 Calibration

Use pure compounds with known constant nitrogen content, e.g. aspartic acid (5.12), as standards for long-term instrument calibration. Analyse, in duplicate, three pure compounds, each with three different concentrations, chosen according to the measurement range of the actual samples.

To prepare a calibration curve, choose the compound and the amount used to ensure that an absolute amount of nitrogen in connection with the matrices to be analysed can be detected. For calibration, five standard samples (minimum) should be used, according to the scope of the analysed matrices.

Above 200 mg of nitrogen, the calibration curve is expected to be non-linear. In this non-linear section, several short segments may be used for calibration. To ensure the quality of calibration in this region, standard samples should be increased in steps of 1 mg to 5 mg of nitrogen.

Calibration may also be performed using aqueous standard solutions.

Check the calibration at least three times at the beginning of the series, and then every 15 to 25 samples, analysing either one of the replicate standards, or a sample of known value. The value obtained shall be less than 0,05 % mass fraction nitrogen of the expected value. Otherwise, analyse the samples again after checking instrument performance.

9.5 Determination

With the instrument under operating conditions, introduce the test portion according to the manufacturer's instructions.

During analysis, the following processes take place in the instrument (see Figure B.1, B.2 or B.3).

The test portion is quantitatively combusted under standardized conditions at a temperature of 850 °C minimum, depending on the instrument and the material being tested.

Volatile decomposition products (mainly molecular nitrogen, nitrogen oxides, carbon dioxide, and water vapour) are transported by the carrier gas (5.1) through the instrument.

Nitrogen oxides are reduced to molecular nitrogen and the excess of oxygen is bound to the copper or tungsten in the reduction column (5.7).

Water is removed by means of a condenser filled with magnesium perchlorate, diphosphorus pentoxide or other drying agents (5.8). Unless carbon dioxide is used as carrier gas (5.1.1), it is removed by being passed over a suitable absorbent, e.g. sodium hydroxide on a support material (5.11).

Interfering compounds (e.g. volatile halogen and sulfur compounds) are removed by absorbents (5.3) or contact materials [e.g. silver wool (5.5) or sodium hydroxide on a suitable support material (5.11)].

The nitrogen in the residual gas mixture, consisting of nitrogen and carrier gas, is passed through a thermal conductivity detector.

9.6 Detection and integration

For quantitative nitrogen determination, the instrument uses a sensitive thermal conductivity cell that is optimized for the carrier gas employed and which may have automatic zero adjustment between the measurement of the test portions. After amplification and analog/digital conversion of the detector signal, data obtained are processed by peripheral microprocessor hardware.

10 Calculation and expression of results

10.1 Calculation

10.1.1 Nitrogen content

Results for the total nitrogen content, w_N , expressed as a percentage mass fraction, are usually available from instrument printouts.

10.1.2 Crude protein content

The correction factor, F_c , is obtained by using Equation (1):

$$F_c = \frac{100 - w_{H_2O,1}}{100 - w_{H_2O,2}} \quad (1)$$

where

$w_{H_2O,1}$ is the moisture mass fraction, expressed as a percentage, before grinding;

$w_{H_2O,2}$ is the moisture mass fraction, expressed as a percentage, after grinding.

The crude protein content, w_p , expressed as a percentage mass fraction, is obtained by using Equation (2):

$$w_p = w_N F F_c \quad (2)$$

where

w_N is the numerical value of the nitrogen content, expressed as a percentage mass fraction, of the sample at its natural moisture content;

F is the generally agreed ratio for the analysed product, equal to 6,25 for animal feeding stuffs (see Annex D).

On request, the crude protein content, w_{pd} , expressed as a percentage mass fraction of the dry matter, can be calculated by using Equation (3):

$$w_{pd} = \frac{100w_p}{100 - w_{H_2O}} \quad (3)$$

where w_{H_2O} is the moisture content, expressed as a percentage mass fraction, determined according to ISO 665, ISO 771 or ISO 6496.

10.2 Expression of results

Express the results to three significant figures (e.g. 9,53 % or 20,5 % or 35,4 %).

11 Precision

11.1 Interlaboratory tests

Details of interlaboratory tests on the precision of the method are summarized in Annex E.

The values derived for these interlaboratory tests may not be applicable to concentration ranges and matrices other than those given.

11.2 Repeatability

The absolute difference between two independent single test results, obtained using the same method on identical test material in the same laboratory by the same operator using the same equipment within a short interval of time, will in not more than 5 % of cases be greater than:

- a) 0,1 % mass fraction if the sample contains less than 4 % mass fraction nitrogen; and
- b) 2 % mass fraction of the nitrogen content if the sample contains 4 % mass fraction or more nitrogen.

11.3 Reproducibility

The absolute difference between two single test results, obtained using the same method on identical test material in different laboratories with different operators using different equipment, will in not more than 5 % of cases be greater than:

- a) a mass fraction of 0,17 % if the sample contains less than a mass fraction of 4 % nitrogen; and
- b) a mass fraction of 4 % of the nitrogen content if the sample contains a mass fraction of 4 % or more of nitrogen.

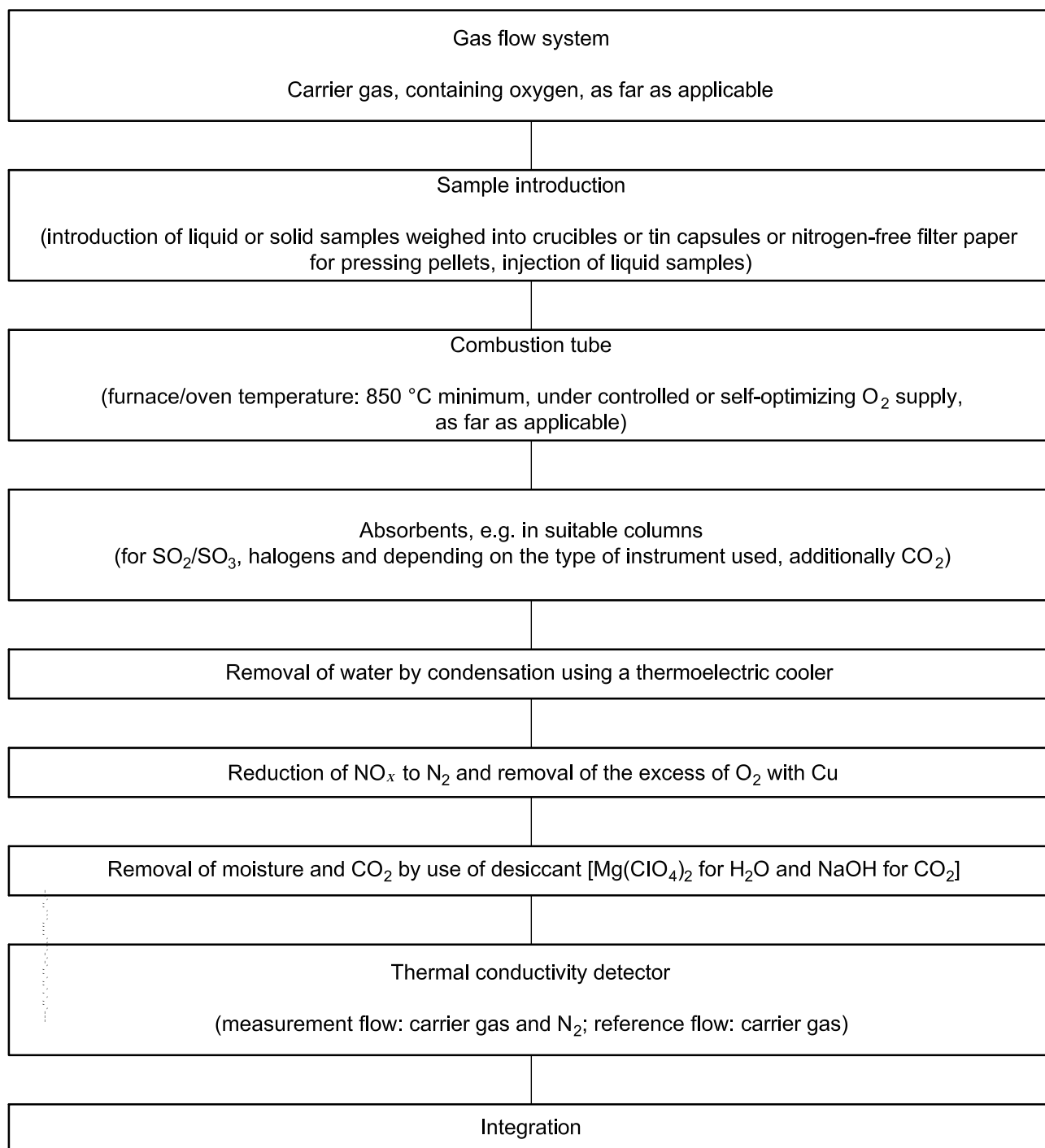
12 Test report

The test report shall contain at least the following information:

- a) all information necessary for the complete identification of the sample;
- b) the sampling method used, if known;
- c) the test method used, with reference to this part of ISO 16634;
- d) all operating details not specified in this part of ISO 16634, or regarded as optional, together with details of any incident which may have influenced the test result(s);
- e) the test result(s) obtained, the conversion factor used, and the moisture content of the test sample or the reference moisture content;
- f) if the repeatability has been checked, the final quoted result obtained.

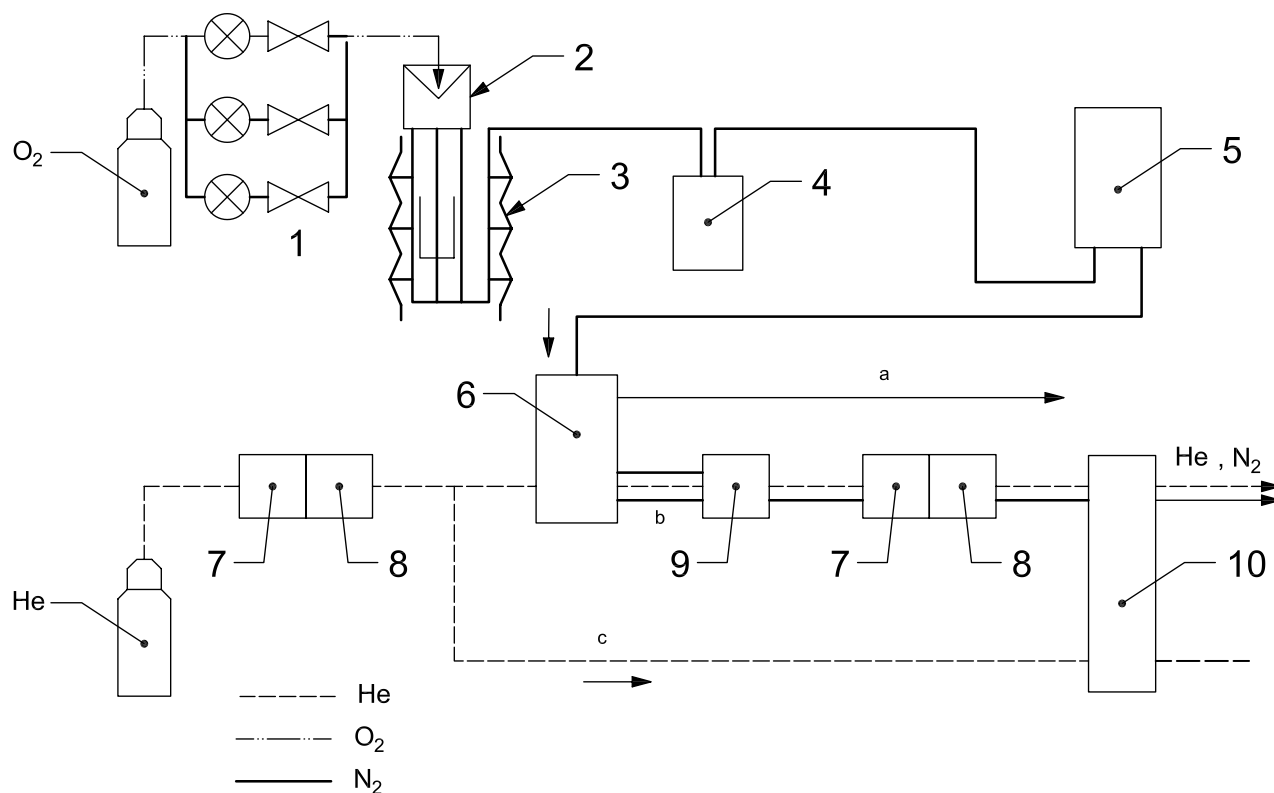
Annex A (informative)

Flowchart for the basic design of a Dumas apparatus



Annex B (informative)

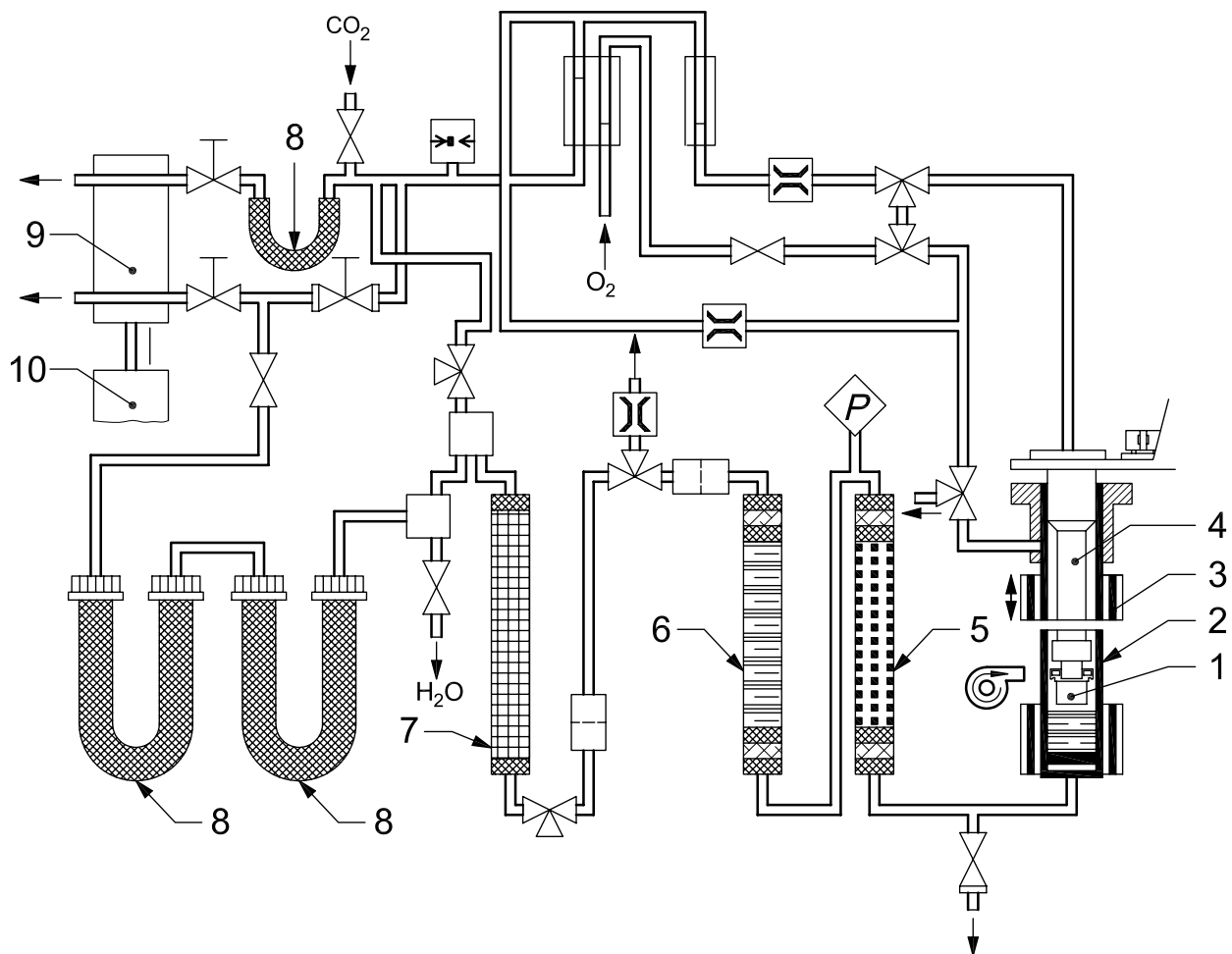
Schemes of suitable types of Dumas apparatus



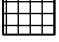
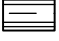



Key

- 1 oxygen flow control
 - 2 sample loader
 - 3 resistance furnace with crucible
 - 4 (thermoelectric) cooler
 - 5 mixing container (ballast column)
 - 6 aliquot doser
 - 7 sodium hydroxide on support material
 - 8 magnesium perchlorate
 - 9 copper catalyst (reduces NO_x and O₂)
 - 10 thermal conductivity detector
- a Surplus of combustion gases.
 b Measuring flow.
 c Reference flow.

Figure B.1 — Dumas apparatus, example 1 (carrier gas: helium)

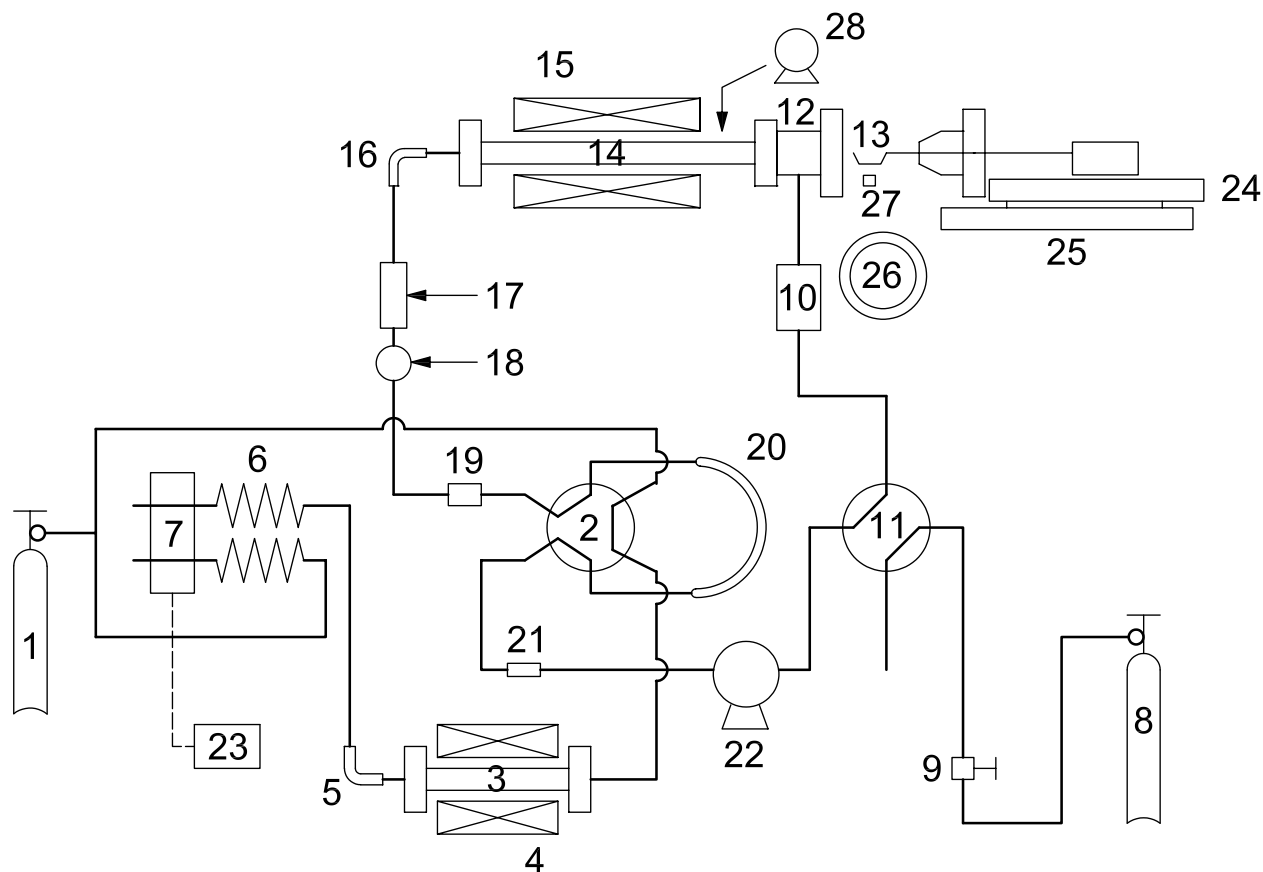


-  drying agent
-  silver wool
-  copper wire
-  copper wire and platinum catalyst
-  lead chromate

Key

- | | |
|-----------------------------------|---------------------------------|
| 1 test crucible | 6 post-column tube |
| 2 combustion column | 7 reduction column |
| 3 combustion furnace (mobile) | 8 drying tube |
| 4 crucible holder | 9 thermal conductivity detector |
| 5 SO ₂ absorption tube | 10 integrator |

Figure B.2 —Dumas apparatus, example 2 (carrier gas: carbon dioxide)



Key

- | | |
|---------------------------------|--------------------------------------------|
| 1 helium cylinder | 15 reaction furnace |
| 2 valve | 16 combustion checking tube |
| 3 reduction tube | 17 condenser for dehydration |
| 4 reduction furnace | 18 gas mixing tube |
| 5 gas absorption tube | 19 filter No.1 |
| 6 gas separator column | 20 measuring tube |
| 7 thermal conductivity detector | 21 filter No.2 |
| 8 oxygen cylinder | 22 circulation tube |
| 9 mass flow controller | 23 data processor |
| 10 flow meter | 24 air cylinder block for sample insertion |
| 11 valve | 25 air cylinder block for sample insertion |
| 12 sample inlet | 26 sample tray |
| 13 sample insertion shaft | 27 lift of sample tray |
| 14 reaction tube | 28 cooling air pump |

Figure B.3 —Dumas apparatus, example 3 (carrier gas: helium)

Annex C (informative)

Equipment calibration

C.1 Calibration compounds

Some of the instruments available require entry of the expected oxygen demand.

The calculations in Clause C.2 are necessary for some types of instruments (moderate molecular oxygen surplus in the presence of carbon dioxide as carrier gas). All calculations proceed on the assumption that the samples consist only of the elements carbon, nitrogen, hydrogen, and oxygen.

Table C.1 — Oxygen demand of pure compounds suitable for calibration of the equipment

| Compound | Nitrogen content % mass fraction | Maximum of theoretical oxygen demand ml/g | Empirical oxygen demand ml/g |
|---------------------------------|-------------------------------------|----------------------------------------------|---------------------------------|
| Urea | 46,65 | 1 305 | 560 |
| Aspartic acid | 10,53 | 800 | 631 |
| Tyrosine | 7,73 | 1 391 | 1 267 |
| Glutamic acid | 9,52 | 952 | 800 |
| Phenylalanine | 8,48 | 1 593 | 1 458 |
| Ethylenediaminetetraacetic acid | 9,59 | 920 | 767 |
| Hippuric acid | 7,82 | 1 344 | 1 219 |

C.2 Examples for calculation of the estimated oxygen demand

C.2.1 Example 1

Urea ($\text{CH}_4\text{N}_2\text{O}$): 1 mol corresponds to 60,06 g, sample mass 1 000 mg.

Therefore, 1 000 mg of urea contain

- 199,8 mg of C,
- 66,6 mg of H,
- 466,5 mg of N, and
- 266,4 mg of O.

The amount of oxygen required for complete combustion to carbon dioxide and water is calculated taking into account the oxygen content of the compound and the following facts:

- a) the molar volume of an ideal gas is 22,4 l (at $T = 0\text{ °C}$ and $p = 0,1\text{ MPa}$);
- b) 1 mol of C corresponds to 12 g (12 000 mg);

- c) 1 mol of H_2 corresponds to 2 g (2 000 mg);
- d) 1 mol of N_2 corresponds to 28 g (28 000 mg);
- e) 1 mol of O_2 corresponds to 32 g (32 000 mg).

As a result, 1 305 ml of oxygen are needed for combustion of 1 g of urea.

C.2.2 Example 2

Aspartic acid [$C_4H_7NO_4$]: 1 mol corresponds to 133,10 g, sample mass 1 000 mg.

Therefore, 1 000 mg of aspartic acid contain

- 360,6 mg of C,
- 52,6 mg of H,
- 105,2 mg of N, and
- 480,8 mg of O.

The amount of oxygen required for complete combustion to carbon dioxide and water is calculated taking into account the oxygen content of the compound and the following facts:

- a) the molar volume of an ideal gas is 22,4 l (at $T = 0\text{ °C}$ and $p = 0,1\text{ MPa}$);
- b) 1 mol of C corresponds to 12 g (12 000 mg);
- c) 1 mol of H_2 corresponds to 2 g (2 000 mg);
- d) 1 mol of N_2 corresponds to 28 g (28 000 mg);
- e) 1 mol of O_2 corresponds to 32 g (32 000 mg).

As a result, 800 ml of oxygen are needed for combustion of 1 g of aspartic acid.

Annex D (informative)

Examples of factors for converting nitrogen content to protein content ²⁾

The general conversion factor for animal feeding stuffs is 6,25. For other commodities, other factors may apply.

| Commodity | Nitrogen to protein conversion | | |
|-------------------------------------------|--------------------------------|----------------|----------------|
| | Reference [19] | Reference [35] | Reference [37] |
| Barley | — | 5,68 | 5,83 |
| Buckwheat | — | 5,53 | — |
| Coconut meat (raw) | 5,3 | — | 5,30 |
| Corn, flour | 6,25 | — | — |
| Cottonseed (roasted), flour | 5,3 | — | — |
| Flax meal | — | 5,41 | — |
| Millet (raw) | 5,83 | 5,68 | — |
| Mustard meal | — | 5,4 | — |
| Oats | — | 5,5 | — |
| Oats (oatmeal, rolled oats) | — | — | 5,83 |
| Peanuts (dried), flour | 5,46 | — | — |
| Rapeseed meal | — | 5,53 | — |
| Rice (brown, long grain) | 5,95 | — | — |
| Rice home-pounded, undermilled, parboiled | — | — | 5,95 |
| Rice husked or brown (only hulls removed) | — | — | 5,95 |
| Rice milled, white | — | — | 5,95 |
| Rye, dark flour | — | 5,64 | 5,83 |
| Safflower meal | 5,3 | — | — |
| Safflower seed (dried) | 5,3 | — | 5,3 |
| Sesame (dried) | 5,3 | — | 5,3 |
| Soya bean (roasted), flour | 5,71 | — | — |
| Soya bean, seeds, flour or products | — | — | 5,71 |
| Sunflower flour | 5,3 | — | — |
| Sunflower seed (dried) | 5,3 | — | 5,3 |
| Triticale | — | 5,76 | — |
| Wheat (hard red) | 5,83 | 5,61 | — |
| Wheat bran | — | 5,26 | 6,31 |
| Wheat germ | — | 5,45 | — |
| Wheat wholemeal or flour or bulgur | — | — | 5,83 |

2) The factors for calculation of crude protein content from the total content of nitrogen are derived from the Kjeldahl method, which is the reference method for the determination of total nitrogen content. As this method uses the same factors as the Kjeldahl method, the use of these factors has to be verified due to the slight difference in results between the Kjeldahl and Dumas methods.

Annex E (informative)

Result of collaborative studies

The results are listed in Table E.1. The values for the repeatability limit and reproducibility limit have been derived from the results of interlaboratory tests carried out in accordance with ISO 5725-1^[4] and ISO 5725-2^[5].

© ISO 2008. All rights reserved.

Table E.1 — Animal feeding stuffs

| Parameter | Swine diet | Cattle feed | Swine finish | Pig feed | Swine grower | Chick feed | Corn soya bean mix | Turkey meal | Dog food | Protein concentrate | Mixed feeding stuff | Poultry diet | Beef finisher, high NPN |
|-----------------------------------------------------------------------------|------------|-------------|--------------|----------|--------------|------------|--------------------|-------------|----------|---------------------|---------------------|--------------|-------------------------|
| No. laboratories | 9 | 10 | 9 | 10 | 9 | 9 | 9 | 10 | 10 | 10 | 30 | 9 | 9 |
| No. results | 9 | 20 | 9 | 20 | 9 | 18 | 9 | 20 | 20 | 20 | 150 | 9 | 9 |
| Mean total nitrogen content % mass fraction | 1,74 | 1,87 | 2,15 | 2,43 | 2,51 | 3,22 | 3,26 | 4,18 | 4,64 | 6,73 | 9,05 | 9,8 | 13,1 |
| Standard deviation of repeatability, s_r % | 0,023 | 0,021 | 0,022 | 0,023 | 0,029 | 0,027 | 0,041 | 0,035 | 0,030 | 0,022 | 0,73 | 0,43 | 0,37 |
| Coefficient of variation of repeatability, $CV(r)$ % | 1,296 | 1,103 | 1,025 | 0,927 | 1,139 | 0,830 | 1,256 | 0,846 | 0,638 | 0,333 | 8,07 | 4,39 | 2,82 |
| Repeatability limit, $r (= 2,8 s_r)$ | 0,063 | 0,058 | 0,062 | 0,064 | 0,080 | 0,076 | 0,115 | 0,100 | 0,084 | 0,063 | 2,07 | 1,22 | 1,05 |
| Standard deviation of reproducibility, s_R % | 0,058 | 0,039 | 0,051 | 0,040 | 0,066 | 0,022 | 0,057 | 0,043 | 0,036 | 0,049 | 0,97 | 0,90 | 0,15 |
| Coefficient of variation of reproducibility, $CV(R)$ % | 3,311 | 2,083 | 2,357 | 1,652 | 2,628 | 0,694 | 1,734 | 1,019 | 0,765 | 0,732 | 10,72 | 9,18 | 1,15 |
| Reproducibility limit, $R (= 2,8 s_R)$ | 0,161 | 0,111 | 0,142 | 0,114 | 0,184 | 0,063 | 0,158 | 0,120 | 0,100 | 0,140 | 2,75 | 2,55 | 0,43 |
| Reference | [18] | a | [18] | a | [18] | a | [18] | a | a | a | [28] | [18] | [18] |

a The collaborative study was carried out at the national level in 1991 by AFNOR.

Table E.2 — Animal feeding stuffs — Feed meals

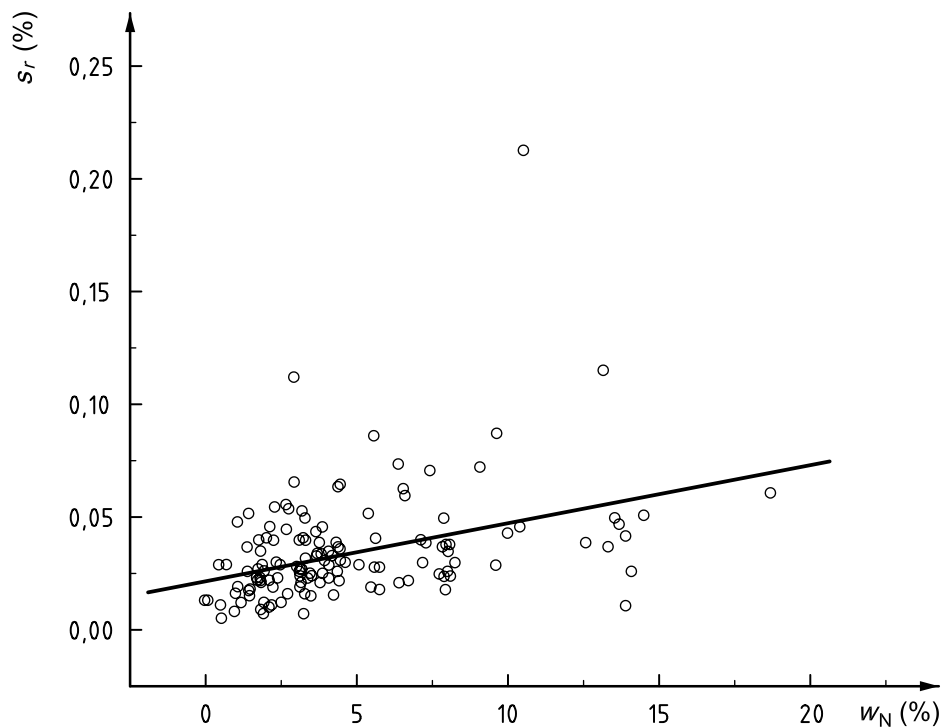
| Parameter | Meat and bone meal | Fish meal | Gluten meal | Meat meal | Feather meal | Blood meal |
|---------------------------------------------------------|--------------------|-----------|-------------|-----------|--------------|------------|
| No. laboratories | 9 | 30 | 10 | 10 | 9 | 9 |
| No. results | 9 | 150 | 20 | 20 | 9 | 9 |
| Mean total nitrogen content % mass fraction | 8,6 | 9,2 | 10,38 | 13,55 | 13,67 | 14,07 |
| Standard deviation of repeatability, s_r % | 0,38 | 0,088 | 0,046 | 0,050 | 0,047 | 0,026 |
| Coefficient of variation of repeatability, $CV(r)$ % | 4,42 | 0,914 | 0,444 | 0,370 | 0,340 | 0,186 |
| Repeatability limit, r (= 2,8 s_r) | 1,08 | 0,246 | 0,130 | 0,142 | 0,130 | 0,073 |
| Standard deviation of reproducibility, s_R % | 0,75 | 0,332 | 0,100 | 0,116 | 0,080 | 0,112 |
| Coefficient of variation of reproducibility, $CV(R)$ | 8,72 | 3,609 | 0,958 | 0,856 | 0,583 | 0,798 |
| Reproducibility limit, R (= 2,8 s_R) | 2,13 | 0,930 | 0,282 | 0,328 | 0,223 | 0,314 |
| Reference | [18] | a | a | a | [18] | [28] |

^a The collaborative study was carried out at the national level in 1991 by AFNOR.

Table E.4 — Oilseed meals

| Parameter | Safflower meal | Safflower meal | Rape meal | Cottonseed meal | Soya bean meal | Canola meal | Soya bean meal | Soya bean meal | Soya bean meal | Soya bean meal | Peanut meal |
|-----------------------------------------------------------|----------------|----------------|-----------|-----------------|----------------|-------------|----------------|----------------|----------------|----------------|-------------|
| No. laboratories | 23 | 24 | 10 | 24 | 24 | 23 | 9 | 10 | 24 | 24 | 24 |
| No. results | 45 | 47 | 20 | 92 | 47 | 45 | 9 | 20 | 91 | 91 | 91 |
| Mean total nitrogen content % mass fraction | 3,32 | 3,34 | 5,41 | 6,62 | 7,13 | 7,21 | 7,30 | 7,42 | 7,88 | 7,88 | 8,25 |
| Standard deviation of repeatability, s_r % | 0,050 | 0,040 | 0,052 | 0,060 | 0,040 | 0,030 | 0,039 | 0,071 | 0,050 | 0,050 | 0,030 |
| Coefficient of variation of repeatability, $CV(r)$ % | 1,506 | 1,198 | 0,961 | 0,906 | 0,561 | 0,416 | 0,540 | 0,953 | 0,635 | 0,635 | 0,364 |
| Repeatability limit, $r (= 2,8 s_r)$ | 0,140 | 0,112 | 0,147 | 0,168 | 0,112 | 0,084 | 0,110 | 0,200 | 0,140 | 0,140 | 0,084 |
| Standard deviation of reproducibility, s_R % | 0,060 | 0,110 | 0,070 | 0,070 | 0,080 | 0,040 | 0,075 | 0,088 | 0,060 | 0,060 | 0,070 |
| Coefficient of variation of reproducibility, $CV(R)$ % | 1,807 | 3,293 | 1,297 | 1,057 | 1,122 | 0,555 | 1,031 | 1,182 | 0,761 | 0,761 | 0,848 |
| Reproducibility limit, $R (= 2,8 s_R)$ | 0,168 | 0,308 | 0,199 | 0,196 | 0,224 | 0,112 | 0,211 | 0,248 | 0,168 | 0,168 | 0,196 |
| Reference | [18] | [18] | a | [18] | [18] | [18] | [18] | a | [18] | [18] | [18] |

a The collaborative study was carried out at the national level in 1991 by AFNOR.



Key

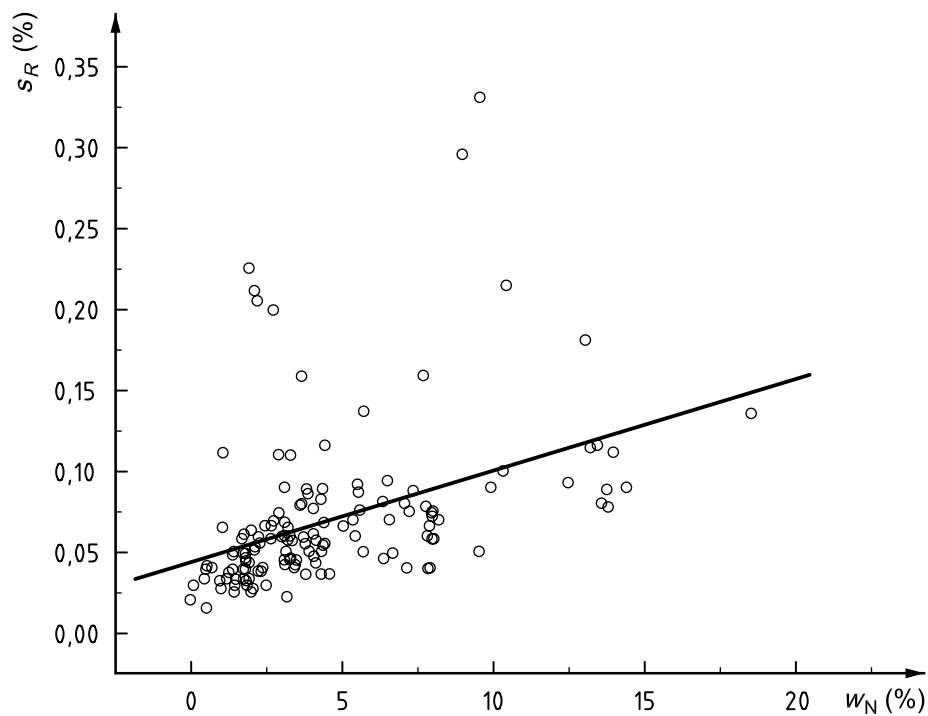
s_r standard deviation of repeatability

w_N nitrogen mass fraction

$$s_r = 0,022 + 0,0026w_N$$

correlation coefficient: $R^2 = 0,380$

Figure E.1 — Relationship between standard deviation of repeatability and nitrogen percentage mass fraction for determinations by the Dumas method (compilation of data in this annex)

**Key**

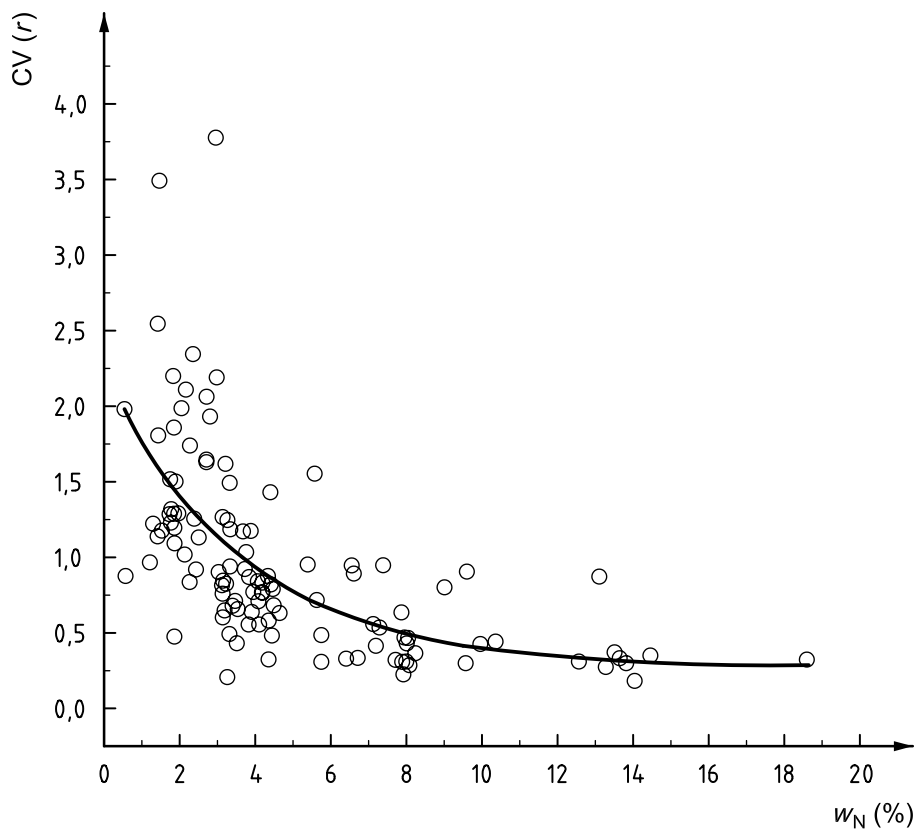
s_R standard deviation of reproducibility

w_N nitrogen mass fraction

$$s_R = 0,044 + 0,0057w_N$$

correlation coefficient: $R^2 = 0,409$

Figure E.2 — Relationship between standard deviation of reproducibility and nitrogen percentage mass fraction for determinations by the Dumas method (compilation of data in this annex)

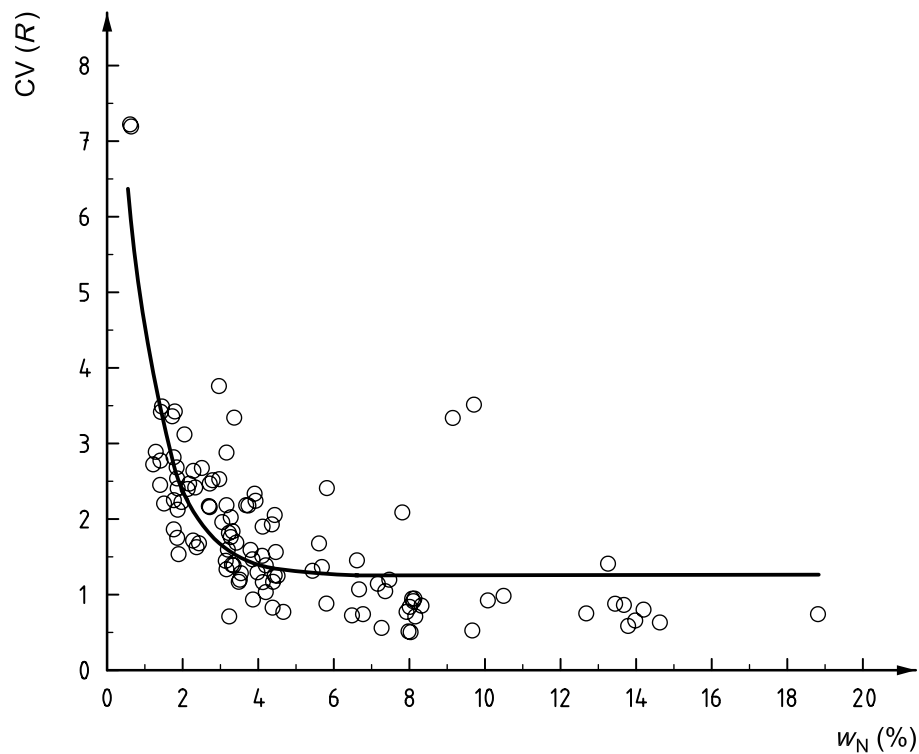


Key

CV(*r*) coefficient of variation of repeatability

w_N nitrogen mass fraction

Figure E.3 — Relationship between coefficient of variation of repeatability and nitrogen percentage mass fraction for determinations by the Dumas method (compilation of data in this annex)



Key

CV(R) coefficient of variation of reproducibility

w_N nitrogen mass fraction

Figure E.4 — Relationship between coefficient of variation of reproducibility and nitrogen percentage mass fraction for determinations by the Dumas method (compilation of data in this annex)

Annex F
(informative)

Relationship between Dumas nitrogen and Kjeldahl nitrogen

Table F.1 — Nitrogen mass fractions estimated by the Dumas and Kjeldahl methods

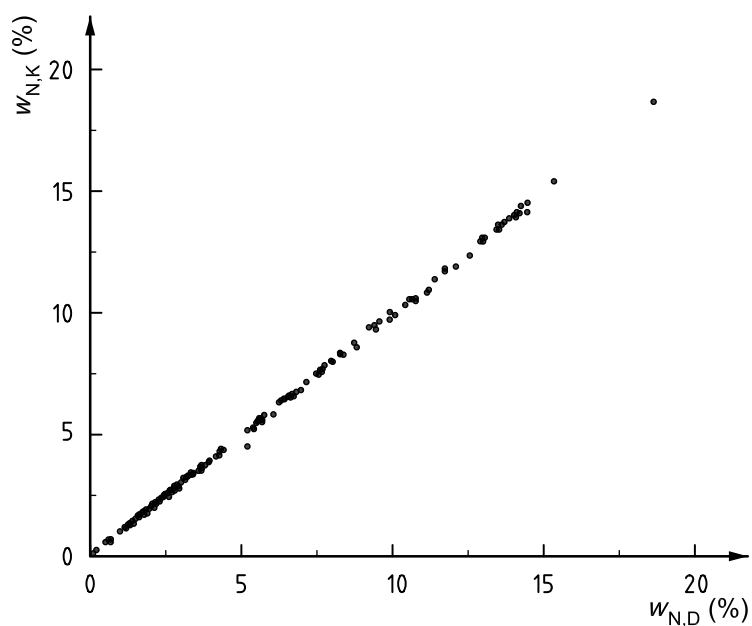
| Commodity | Kjeldahl details | Dumas instrument used ^a | Range of nitrogen | Ratio between the means for Kjeldahl/Dumas protein | Notes | Conversion equation ^b | References |
|-----------------------------------------------------------|-----------------------------------------------|------------------------------------|-------------------|----------------------------------------------------|------------------------------------------------------------------------------------------|------------------------------------------------------------------------------------------|------------|
| Soybean products | Micro-Kjeldahl: copper-potassium sulfate | Elementar RapidN III | 0,08 to 14,1 | 0,66 to 1,03 | | $w_{N,K} = 0,974 8w_{N,D} - 0,004 9$ | [39] |
| Animal feeds and raw materials | Kjel-Foss | Foss-Heraeus MacroN | 0,7 to 12,9 | 0,93 to 1,02 | Compared to Kjel-Foss | $w_{N,K} = 0,993 9w_{N,D} - 0,043$ | [33] |
| Feed samples | Copper(II) sulfate | LECO CNS 2000 | 0,13 to 10,2 | | | $w_{N,K} = 0,998 7w_{N,D} - 0,056 7$ | [26] |
| Dairy products and standards | Copper(II) sulfate | LECO and Foss-Heraeus | 0,5 to 14,5 | 0,979 to 1,029 | | $w_{N,K} = 0,994 6w_{N,D} + 0,024 8$ | [43] |
| Animal feeds and raw materials | Copper(II) sulfate | LECO FP228 | 2,6 to 14 | 0,927 to 1,000 | High-nitrate orchard grass | $w_{N,K} = 1,002 w_{N,D} - 0,055 9$ | [42] |
| Animal feeds and raw materials | Mercury catalyst | LECO FP428/CHN 600 | 1,6 to 15 | 0,975 to 1,010 | Nicotinic acid ratio, 0,871 3 | $w_{N,K} = 0,999 8w_{N,D} + 0,013 4$ | [42] |
| Grains and oilseeds | Mercury catalyst | LECO Perkin Elmer Heraeus | 1,92 to 5,6 | 0,97 to 1,010 | Nicotinic acid ratio, 0,95 | $w_{N,K} = 1,000 5w_{N,D} - 0,017 3$ | [21] |
| Barley and malt | Various catalysts including mercury(II) oxide | LECO and Foss-Heraeus | 1,145 to 2,03 | 0,978 to 0,997 | All Kjeldahl | $w_{N,K} = 0,967 9w_{N,D} + 0,013 8$ | [22] |
| | | | | | Less Kjel-Foss | $w_{N,K} = 0,965 7w_{N,D} + 0,030 6$ | |
| Wheat and wheat flour | | | | | Bias about 0,2 % protein | | [36] |
| Cereals, oilseeds, grains | | Non-commercial | | | Instrument finds 1,2 % to 2,5 % more protein in oilseeds but similar for oilseeds | Instrument finds 1,2 % to 2,5 % more protein in oilseeds but similar for oilseeds | [31] |
| Yeast, spent grains malt | | | | | Instrument finds 0,1 % to 0,4 % more protein, not a significant difference statistically | Instrument finds 0,1 % to 0,4 % more protein, not a significant difference statistically | [26] |
| Oilseeds (canola, flax soybeans, sunflower seed, mustard) | Titanium oxide optimized to wheat | LECO FP228 | 3,7 to 7,5 | | Differences of 0,15 % in w_N also sunflower seed noted as a problem | $w_{N,K} = 0,973 7w_{N,D} + 0,021 3$ | [23] |

Table F.1 (continued)

| Commodity | Kjeldahl details | Dumas instrument used ^a | Range of nitrogen | Ratio between the means for Kjeldahl/Dumas protein | Notes | Conversion equation ^b | References |
|--------------------------------|--------------------|------------------------------------|-------------------|----------------------------------------------------|---------------------------------------------------------------------------------------------------------------------------------------------------------------------------------------------------------|------------------------------------------------------------------------------------------|------------|
| Wide range of materials | Copper(II) sulfate | LECO FP228 | 0,07 to 37,4 | 0,33 to 1,40 | Noted variance in fruits and vegetables and high variance in fish | $w_{N,K} = 1,00w_{N,D} - 0,09$ | [41] |
| Feeding stuffs | Kjel-Foss | LECO FP228 | 0,5 to 14 | small: 0,98 to 1,84; macro: 0,93 to 1,87 | Compared the small sample (100 mg) in AOAC method to a 1 g pressed sample. The large sample method had much better repeatability, nicotinic acid ratio, 0,98, but EDTA at 0,83; possible error in paper | small: $w_{N,K} = 0,997w_{N,D} - 0,086$ large: $w_{N,K} = 0,988w_{N,D} - 0,014$ | [40] |
| Baby foods | Copper(II) sulfate | CE Model 1500 | 1,01 to 9,26 | 0,95 to 1,01 | | $w_{N,K} = 0,979w_{N,D} - 0,003$ | [38] |

^a This information is given for the convenience of the users of this International Standard and does not constitute an endorsement by ISO of these products.

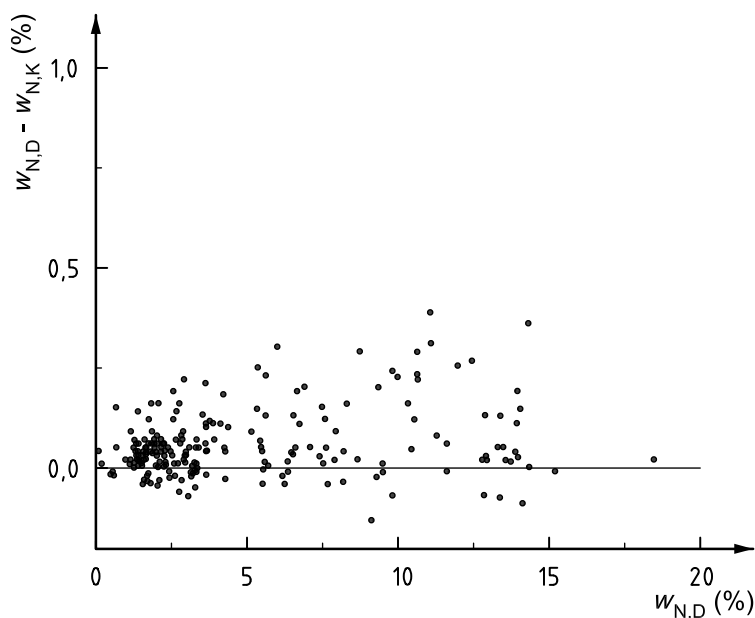
^b $w_{N,K}$ is the Kjeldahl nitrogen content, expressed as a percentage mass fraction; $w_{N,D}$ is the Dumas nitrogen content, expressed as a percentage mass fraction.



Key

- $w_{N,D}$ nitrogen mass fraction determined by the Dumas method
- $w_{N,K}$ nitrogen mass fraction determined by the Kjeldahl method

Figure F.1 — Relationship between nitrogen mass fractions estimated by the Dumas and Kjeldahl methods for samples from studies reported in Table F.1



Key

- $w_{N,D} - w_{N,K}$ difference between nitrogen mass fraction determined by the Dumas and Kjeldahl methods
- $w_{N,D}$ nitrogen mass fraction determined by the Dumas method
- NBS standard orchard leaves
- $w_{N,D} = 5,1$ % mass fraction; $w_{N,K} = 4,5$ % mass fraction; expected value of $w_N = 5,0$ % mass fraction

Figure F.2 — Residual plot for relationship between nitrogen mass fractions estimated by the Dumas and Kjeldahl methods for samples from studies reported in Table F.1

Bibliography

- [1] ISO 542, *Oilseeds — Sampling*
- [2] ISO 1871, *Food products — General guidelines for the determination of nitrogen by the Kjeldahl method* ³⁾
- [3] ISO 5500, *Oilseed residues — Sampling*
- [4] ISO 5725-1, *Accuracy (trueness and precision) of measurement methods and results — Part 1: General principles and definitions*
- [5] ISO 5725-2, *Accuracy (trueness and precision) of measurement methods and results — Part 2: Basic method for the determination of repeatability and reproducibility of a standard measurement method*
- [6] ISO 5983-1, *Animal feeding stuffs — Determination of nitrogen content and calculation of crude protein content — Part 1: Kjeldahl method*
- [7] ISO 5983-2, *Animal feeding stuffs — Determination of nitrogen content and calculation of crude protein content — Part 2: Block digestion/steam distillation method*
- [8] ISO 6497, *Animal feeding stuffs — Sampling*
- [9] ISO 13690, *Cereals, pulses and milled products — Sampling of static batches*
- [10] ISO 14891 | IDF 185, *Milk and milk products — Determination of nitrogen content — Routine method using combustion according to the Dumas principle*
- [11] ISO 20483, *Cereals and pulses — Determination of the nitrogen content and calculation of the crude protein content — Kjeldahl method*
- [12] ICC Standard No. 167, *Determination of crude protein in grain and grain products for food and feed by the Dumas combustion principle*
- [13] AACC approved method 46-30: Crude protein — Combustion method. In: *AACC approved methods*. American Association of Cereal Chemists, St. Paul, MN, 2002. Available (2008-04-08) from <http://www.aacenet.org>
- [14] AOAC official method 992.23: Crude protein in cereal grains and oilseeds. In: *Official methods of analysis of AOAC International*. AOAC International, Washington, DC, 2002. Available (2008-04-08) from <http://eoma.aoac.org>
- [15] AOAC official method 997.09: Nitrogen in beer, wort, and brewing grains: Protein (total) by calculation — Combustion method. ASBC-AOAC Method. In: *Official methods of analysis of AOAC International*. AOAC International, Washington, DC, 2002. Available (2008-04-08) from <http://eoma.aoac.org>
- [16] AOAC official method 990.03: Protein (crude) in animal feed. Combustion method. In: *Official methods of analysis of AOAC International*. AOAC International, Washington, DC, 2002. Available (2008-04-08) from <http://eoma.aoac.org>

3) To be published. (Revision of ISO 1871:1975)

- [17] AOCS official method Ba 4f-00: Combustion method for determination of crude protein in soybean meal. In: *Official methods and recommended practices of the AOCS*, FIRESTONE, D.E., editor. AOCS Press, Champaign, IL, 1997. Available (2008-04-08) from <http://www.aocs.org>
- [18] AOCS official method Ba 4e-93: Generic combustion method for determination of crude protein. In: *Official methods and recommended practices of the AOCS*, FIRESTONE, D.E., editor. AOCS Press, Champaign, IL, 1997. Available (2008-04-08) from <http://www.aocs.org>
- [19] AOCS official method Bc 4-91: Nitrogen-ammonia-protein modified Kjeldahl method titanium oxide + copper sulfate catalyst. In: *Official methods and recommended practices of the AOCS*, FIRESTONE, D.E., editor. AOCS Press, Champaign, IL, 1997. Available (2008-04-08) from <http://www.aocs.org>
- [20] BERNER, D.L., BROWN, J. Protein nitrogen combustion method collaborative study: 1 — Comparison with Smalley total Kjeldahl nitrogen and combustion results. *J. Am. Oil Chem. Soc.* 1994, **71**, p. 1291-1293
- [21] BICSAK, R.C. Comparison of Kjeldahl method for determination of crude protein in cereal grains and oilseeds with generic combustion method: Collaborative study. *J. AOAC Int.* 1993, **76**, p. 780-786
- [22] BUCKEE, G.K. Determination of total nitrogen in barley, malt and beer by Kjeldahl procedures and the Dumas combustion method — Collaborative trial. *J. Inst. Brew.* 1994, **100**, p. 57-64
- [23] DAUN, J.K., DECLERCQ, D.R. Comparison of combustion and Kjeldahl methods for determination of nitrogen in oilseeds. *J. Am. Oil Chem. Soc.* 1994, **71**, p. 1047-1078
- [24] DONHAUSER, S., GEIGER, E., BRIEM, F. Automatic nitrogen measurement using a combustion method. *Brauwelt Int.* 1993, (3), p. 219-221
- [25] ELLEN, G., MAHULETTE, G.G. Stikstofbepaling in zuivelproducten: Dumas evenaart Kjeldahl [Nitrogen determination in dairy products: Dumas equals Kjeldahl]. *Voedingsmiddelen-technol.* 1997, **30**(3), p. 25-29
- [26] ETHERIDGE, R.D., PESTI, G.M., FOSTER, E.H.A. A comparison of nitrogen values obtained utilizing the Kjeldahl nitrogen and Dumas combustion methodologies (Leco CNS 2000) on samples typical of an animal nutrition analytical laboratory. *Animal Feed Sci. Technol.* 1998, **73**, p. 21-28
- [27] FOSTER, A. Alternative method for analysis of total protein using the nitrogen determinator. *J. Am. Soc. Brew. Chem.* 1989, **47**, p. 42-43
- [28] FRISTER, H., FEIER, U., GOETSCH, P.-H. Direct determination of nitrogen content by Dumas analysis: Interlaboratory study on precision characteristics. AOAC International — Europe Section, 4th International Symposium, Nyon, Switzerland, 1994
- [29] JOHANSSON, C.-G. Determination of total nitrogen in barley and malt by combustion method: Collaborative trial. *Monatsschr. Brauwiss.* 1996, **49**, p. 326-330
- [30] KINGBRINK, M., SEBRANEK, J.G. Combustion method for determination of crude protein in meat and meat products: Collaborative study. *J. AOAC Int.* 1993, **76**, p. 787-793
- [31] REVESZ, R.N., AKER, N. Automated determination of protein-nitrogen in cereals and grains. *J. Assoc. Off. Anal. Chem.* 1977, **60**, p. 1238-1242
- [32] SCHUSTER, M., MORWARID, M., SATTES, H. [The determination of the protein content in feedstuffs by the Dumas method]. In: *103. VDLUFA-Kongress*, Ulm, Germany, 1991-09-16 to 21, p. 526-531. VDLUFA, Darmstadt
- [33] SMITH, I.D. Evaluation of the Foss-Heraeus macro N for the determination of nitrogen in a wide range of foodstuffs, ingredients and biological materials and comparison with the Kjelfoss. *Anal. Proc.* 1991, **28**, p. 320-324

- [34] SWEENEY, R.A. Generic combustion method for determination of crude protein in feeds: Collaborative study. *J. Assoc. Off. Anal. Chem.* 1989, **72**, p. 770-774
- [35] TKACHUK, R. Nitrogen-to-protein conversion factors for cereals and oilseed meals. *Cereal Chem.* 1969, **46**, p. 419-423
- [36] WINKLER, R., BOTTERBRODT, S., RABE, E., LINDHAUER, M.G. Stickstoff-/Proteinbestimmung mit der Dumas-Methode in Getreide und Getreideprodukten [Nitrogen/protein determination in wheat and wheat products (flour and meal) by the Dumas method]. *Getreide Mehl Brot* 2000, **54**, p. 86-91
- [37] JOINT FAO/WHO AD HOC EXPERT COMMITTEE ON ENERGY AND PROTEIN REQUIREMENTS. *Energy and protein requirements: Report of a Joint FAO/WHO Ad Hoc Expert Committee, Rome, 22 March-2 April 1971*. Rome, Food and Agriculture Organization, 1973. 118 p. (FAO Nutrition Meetings Report, No. 52; WHO Technical Report, No. 522.)
- [38] BELLOMONTE, G., COSTANTINI, A., GIAMMARIOLI, S. Comparison of modified automatic Dumas method and the traditional Kjeldahl method for nitrogen determination in infant food. *J. Assoc. Off. Anal. Chem.* 1987, **70**, p. 227-229
- [39] JUNG, S., RICKERT, D.A., DEAK, N.A., ALDIN, E.D., RECKNOR, J., JOHNSON, L.A., MURPHY, P.A. Comparison of Kjeldahl and Dumas methods for determining protein contents of soybean products. *J. Am. Oil Chem. Soc.* 2003, **80**, p.1169-1173
- [40] SCHMITTER, B.M., RIHS, T. Evaluation of a macrocombustion method for total nitrogen determination in feedstuffs. *J. Agric. Food Chem.* 1989, **37**, p. 992-994
- [41] SIMONNE, A.H., SIMONNE, E.H., EITENMILLER, R.R., MILLS, H.A., CRESMAN, C.P. Could the Dumas method replace the Kjeldahl digestion for nitrogen and crude protein determinations in foods? *J. Sci. Food Agric.* 1997, **73**, p. 39-45
- [42] SWEENEY, R.A., REXROAD, P.R. Comparison of LECO FP-228 "nitrogen determinator" with AOAC copper catalyst Kjeldahl method for crude protein. *J. Assoc. Off. Anal. Chem.* 1987, **70**, p. 1028-1030
- [43] WILES, P.G., GRAY, I.K., KISSLING, R.C. Routine analysis of proteins by Kjeldahl and Dumas methods: Review and interlaboratory study using dairy products. *J. AOAC Int.* 1998, **81**, p. 620-632

© ISO 2015

www.iso.org

ICS 65.120; 67.050; 67.200

Price based on 30 pages