



**INTERNATIONAL STANDARD ISO 16322-2:2005**  
**TECHNICAL CORRIGENDUM 1**

Published 2007-10-15

INTERNATIONAL ORGANIZATION FOR STANDARDIZATION • МЕЖДУНАРОДНАЯ ОРГАНИЗАЦИЯ ПО СТАНДАРТИЗАЦИИ • ORGANISATION INTERNATIONALE DE NORMALISATION

**Textiles — Determination of spirality after laundering —**  
**Part 2:**  
**Woven and knitted fabrics**

**TECHNICAL CORRIGENDUM 1**

*Textiles — Détermination du vrillage après lavage —*

*Partie 2: Étoffes tissées ou tricotées*

*RECTIFICATIF TECHNIQUE 1*

Technical Corrigendum 1 to ISO 16322-2:2005 was prepared by Technical Committee ISO/TC 38, *Textiles*, SC 2, *Cleansing, finishing and water resistance tests*.

---

*Page 2, 5.7*

Replace 5.7 with the following:

**5.7 Marking template**, of dimensions (380 × 380) mm, (680 × 380) mm or (580 × 510) mm.

*Page 3, 7.3.1*

At the end of the second paragraph, add “[see Figure 6 a)]” so that the sentence reads:

Place a 580 mm × 510 mm template on the fabric with the long direction parallel to the selvage [see Figure 6 a)].

*Page 3, 7.3.2*

After the second sentence of second paragraph, add “[see Figure 6 b)]” so that the sentence reads:

Turn seams to the inside, forming an open-ended bag or pillowcase-type specimen to simulate a garment panel [see Figure 6 b)].

Replace the third paragraph with the following:

Fold and stitch the unsewn edge of the specimen to make a 12 mm hemmed edge [see Figure 6 c)].

At the end of the fourth paragraph, add “[see Figure 6 c)]” so that the sentence reads:

Measure and record distances along the seam lines, AB and CD, of each specimen [see Figure 6 c)].

*Page 4, 9.2.1.2*

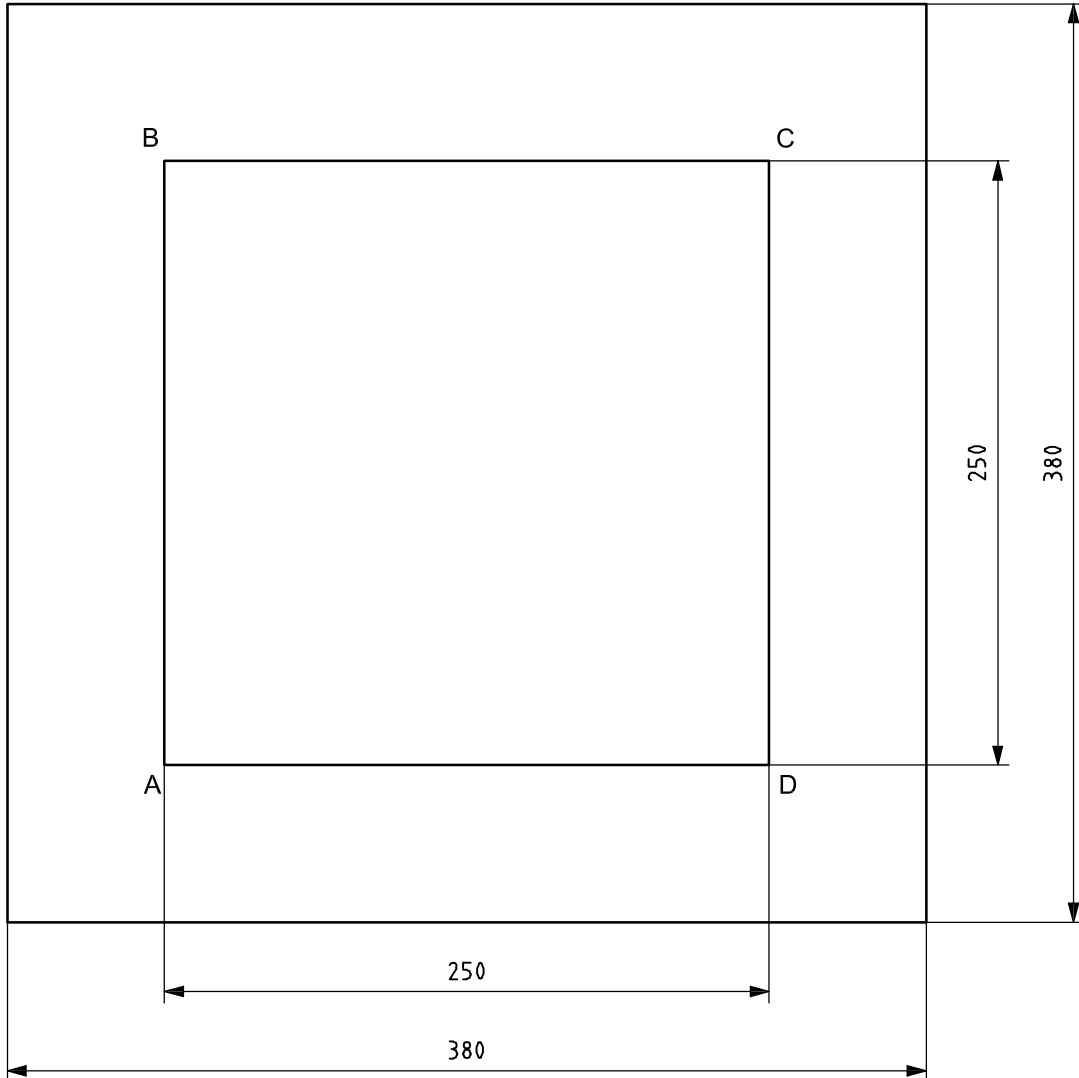
In the first sentence of the first paragraph, change “(see Figure 1)” to “(see Figure 3)”.

Replace the second and third paragraphs by the following:

Place the horizontal leg of a right-angle device along line AD so that the second leg is perpendicular downward from point B. Mark point A'. Move the right-angle device horizontally along line AD and mark point D' downward from point C (see Figure 3).

Page 6, Figure 1

Change the dashed lines (AB, BC, CD, DA) to solid lines to denote marking instructions in 7.1.2 to form a marked square and change the title to “Fabric specimen for marking procedure A before laundering”.



**Figure 1 — Fabric specimen for marking procedure A before laundering**

Page 7, Figure 2

Change the title to “Fabric specimen for marking procedure A after laundering”.

Page 8, Figure 3

Change the title to “Fabric specimen for marking procedure A, alternative assessment option after laundering”.

Change the long dimension from “650 mm” to “680 mm” as stated in 7.2.1 and change the title to read “Fabric specimen for marking procedure B before laundering”.

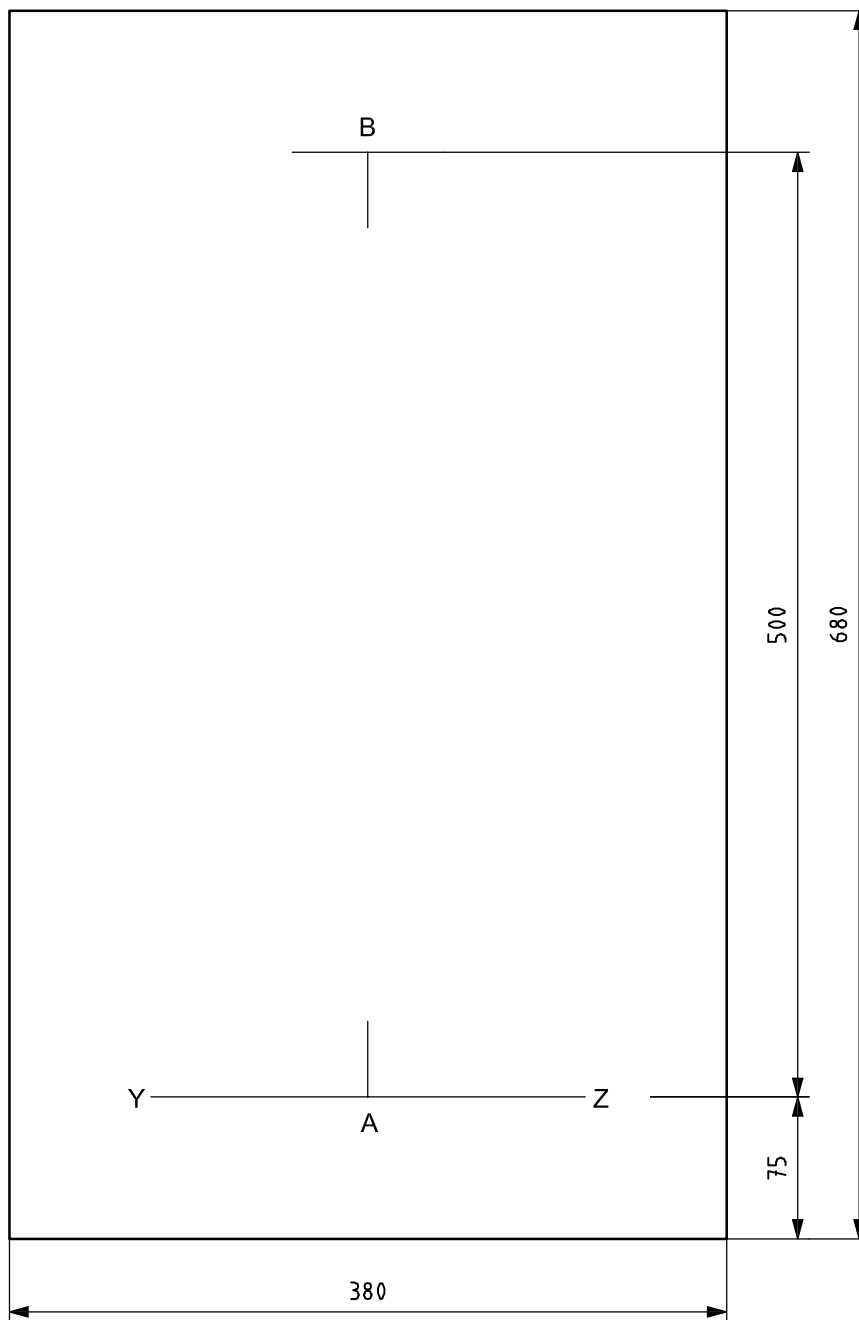


Figure 4 — Fabric specimen for marking procedure B before laundering

Page 10, Figure 5

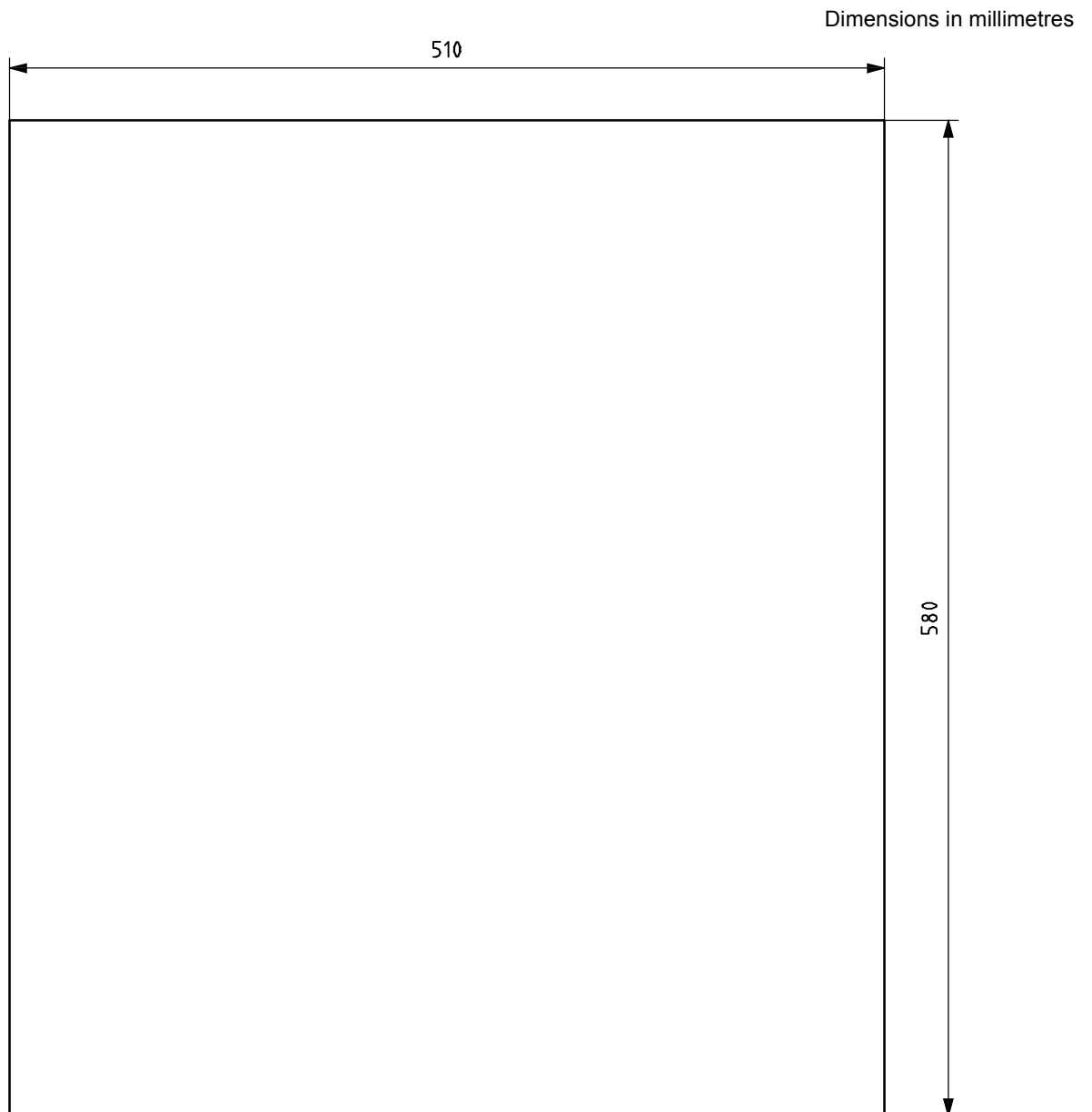
Add under the figure:

NOTE The spirality direction in the figure is for illustration only. Spirality can be in either direction.

Change the title to read "Fabric specimen for marking procedure B after laundering".

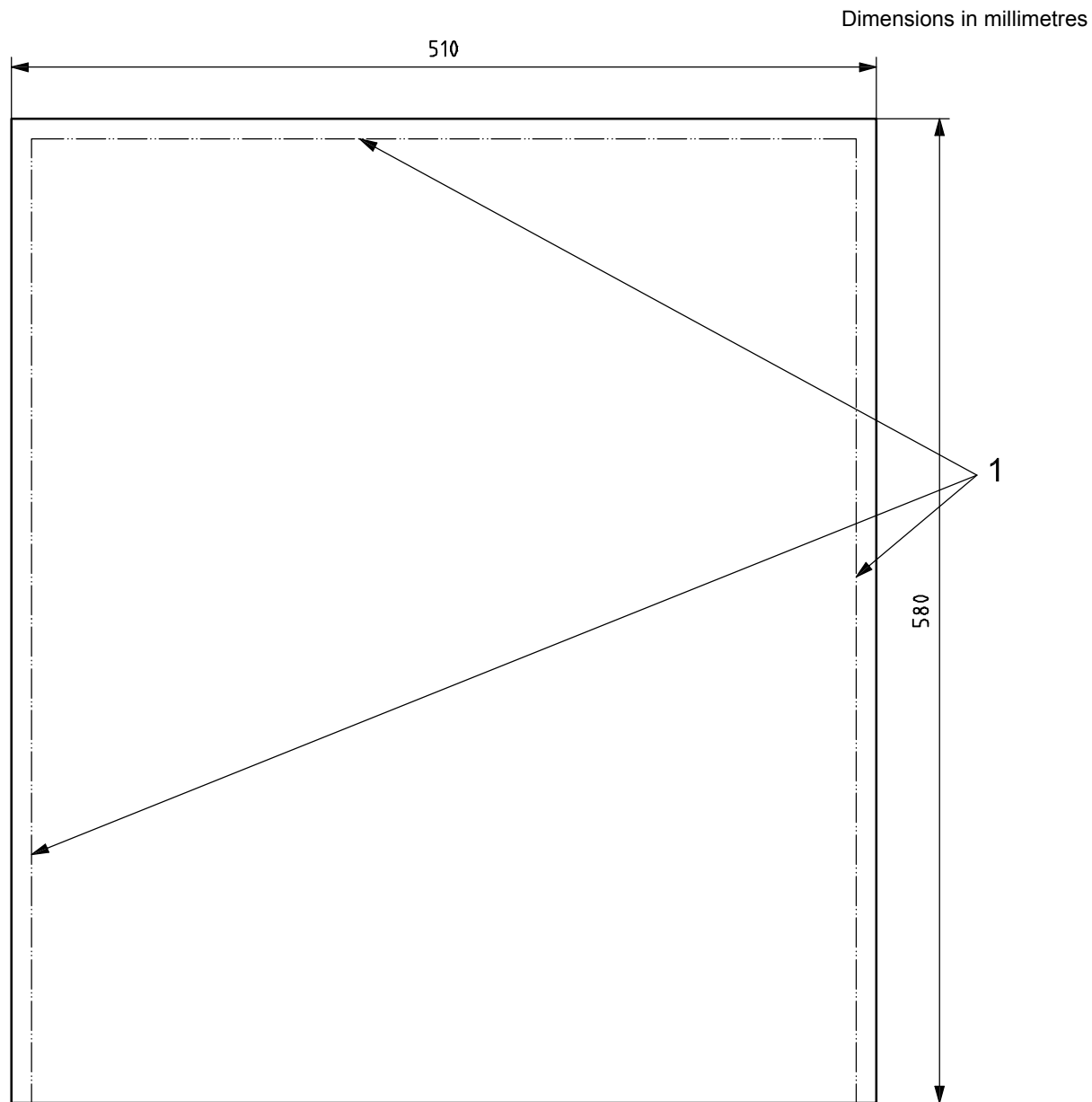
Page 11, Figure 6

Replace the existing Figure 6 with Figures 6 a), b) and c).



**a) Fabric mock-garment specimen (2 layers) for marking procedure C before laundering**

**Figure 6 (continued)**

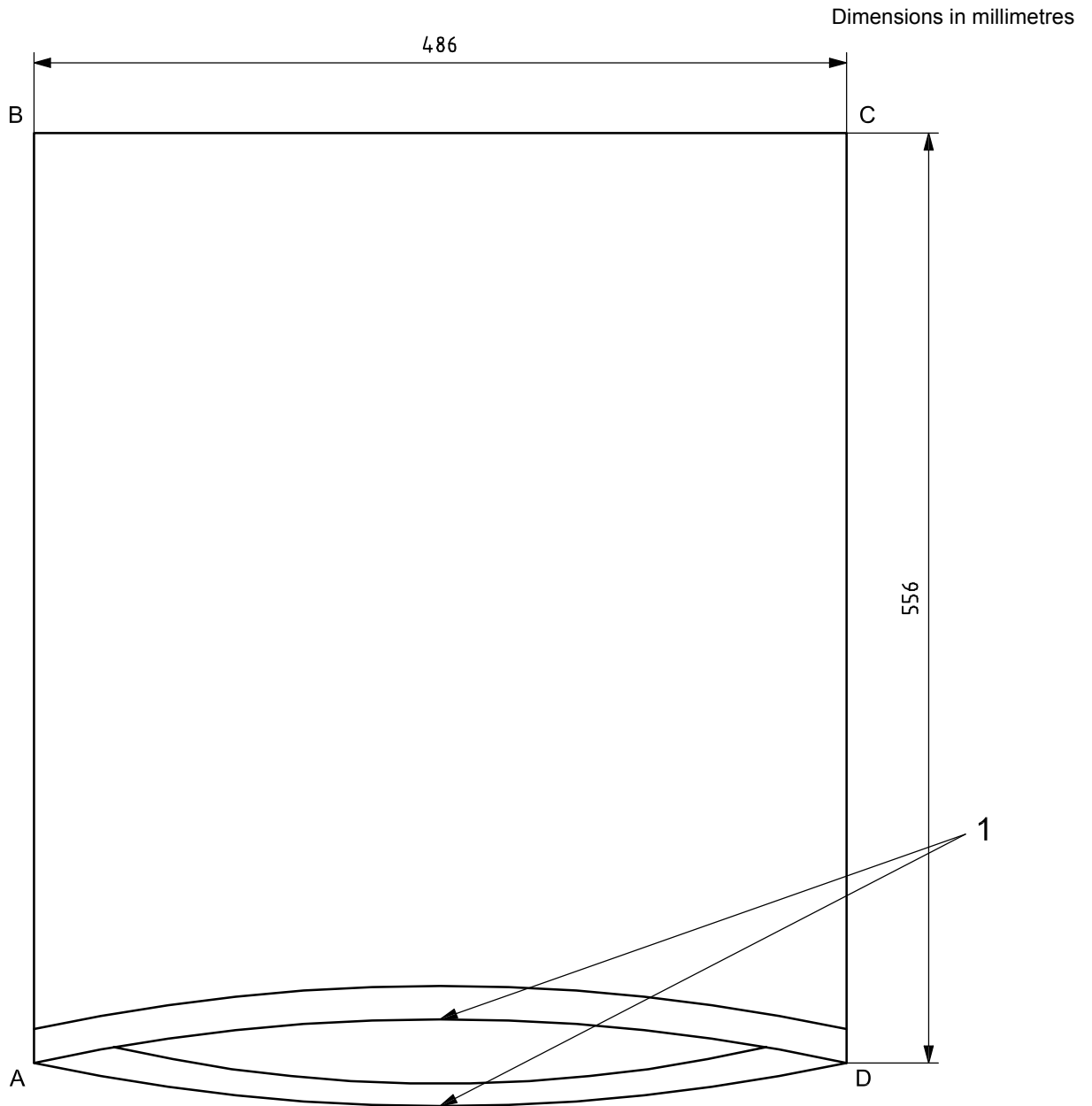


**Key**

1 seams

**b) Fabric mock-garment specimen (2 layers) for marking procedure C with seams before laundering**

**Figure 6** (continued)



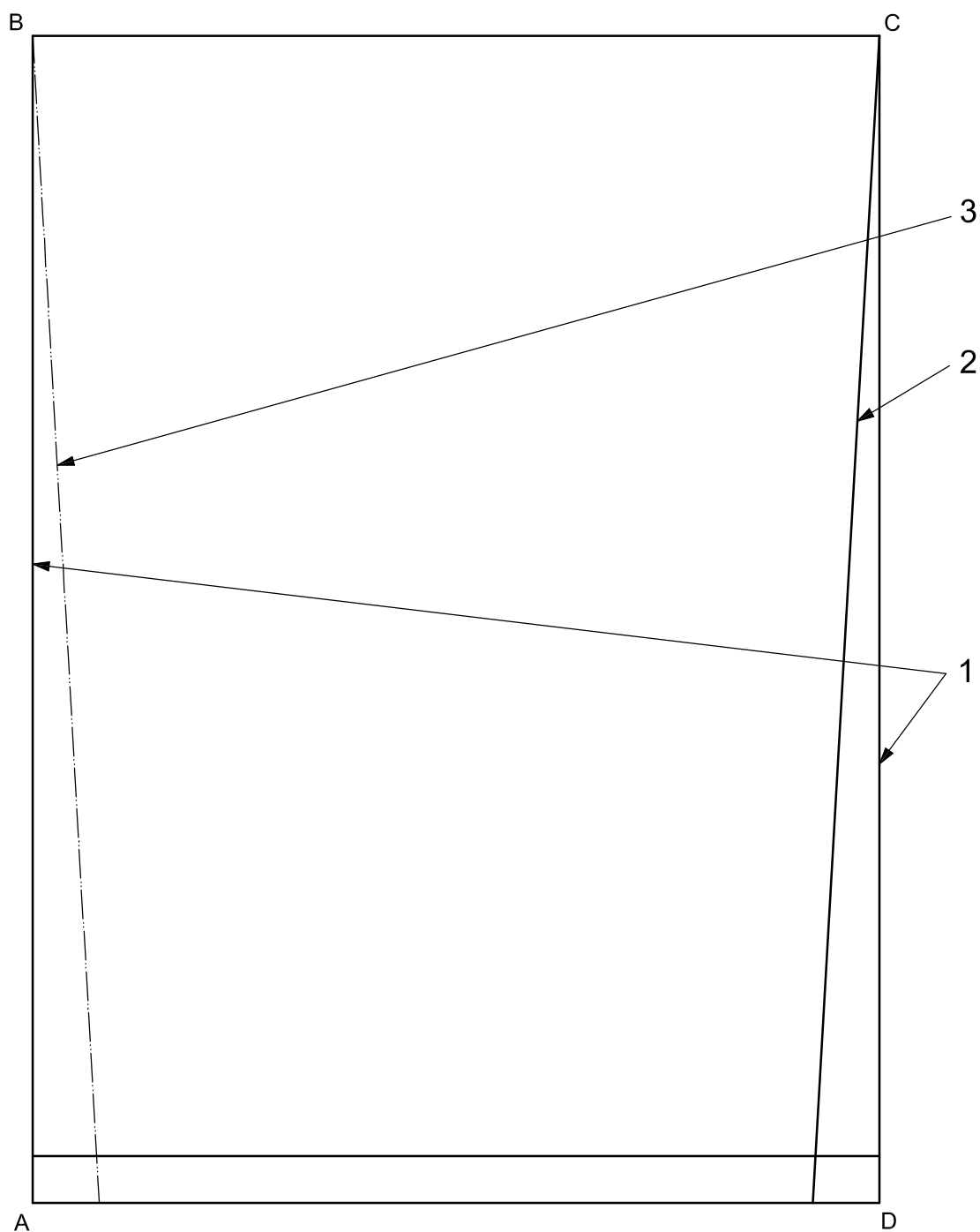
**Key**

1 hemmed open edge

**c) Fabric mock-garment specimen for marking procedure C with seams turned inside and open edge hemmed before laundering**

**Figure 6 — Fabric mock-garment specimen for marking procedure C before laundering**

Replace the existing Figure 7 with the following.



**Key**

- 1 new side edges of the specimen
- 2 side seam on the front of the specimen
- 3 side seam displaced to the back of the specimen

NOTE The spirality direction in the figure is for illustration only. Spirality can be in either direction.

**Figure 7 — Fabric mock-garment specimen for marking procedure C after laundering**