

First edition
2012-10-01

**Electronic fee collection — Charging
performance —**

**Part 1:
Metrics**

*Perception du télépéage — Performance d'imputation —
Partie 1: Métrique*



Reference number
ISO/TS 17444-1:2012(E)

© ISO 2012



COPYRIGHT PROTECTED DOCUMENT

© ISO 2012

All rights reserved. Unless otherwise specified, no part of this publication may be reproduced or utilized in any form or by any means, electronic or mechanical, including photocopying and microfilm, without permission in writing from either ISO at the address below or ISO's member body in the country of the requester.

ISO copyright office
Case postale 56 • CH-1211 Geneva 20
Tel. + 41 22 749 01 11
Fax + 41 22 749 09 47
E-mail copyright@iso.org
Web www.iso.org

Published in Switzerland

Contents	Page
Foreword	iv
Introduction	v
1 Scope	1
2 Normative references	2
3 Terms and definitions	3
4 Abbreviated terms	7
5 Definition of charging performance metrics	7
5.1 General	7
5.2 Metric Identification	11
5.3 End-to-End metrics	11
5.4 User Account Metrics	12
5.5 Payment Claim Metrics	13
5.6 Billing Details Metrics	13
5.7 Toll Declaration Metrics	15
5.8 Charge Report Metrics	18
Annex A (informative) Defining Performance Requirements	21
Bibliography	24

Foreword

ISO (the International Organization for Standardization) is a worldwide federation of national standards bodies (ISO member bodies). The work of preparing International Standards is normally carried out through ISO technical committees. Each member body interested in a subject for which a technical committee has been established has the right to be represented on that committee. International organizations, governmental and non-governmental, in liaison with ISO, also take part in the work. ISO collaborates closely with the International Electrotechnical Commission (IEC) on all matters of electrotechnical standardization.

International Standards are drafted in accordance with the rules given in the ISO/IEC Directives, Part 2.

The main task of technical committees is to prepare International Standards. Draft International Standards adopted by the technical committees are circulated to the member bodies for voting. Publication as an International Standard requires approval by at least 75 % of the member bodies casting a vote.

In other circumstances, particularly when there is an urgent market requirement for such documents, a technical committee may decide to publish other types of document:

- an ISO Publicly Available Specification (ISO/PAS) represents an agreement between technical experts in an ISO working group and is accepted for publication if it is approved by more than 50 % of the members of the parent committee casting a vote;
- an ISO Technical Specification (ISO/TS) represents an agreement between the members of a technical committee and is accepted for publication if it is approved by 2/3 of the members of the committee casting a vote.

An ISO/PAS or ISO/TS is reviewed after three years in order to decide whether it will be confirmed for a further three years, revised to become an International Standard, or withdrawn. If the ISO/PAS or ISO/TS is confirmed, it is reviewed again after a further three years, at which time it must either be transformed into an International Standard or be withdrawn.

Attention is drawn to the possibility that some of the elements of this document may be the subject of patent rights. ISO shall not be held responsible for identifying any or all such patent rights.

ISO/TS 17444-1 was prepared by Technical Committee ISO/TC 204, *Intelligent transport systems*, and by Technical Committee CEN/TC 278, *Road transport and traffic telematics* in collaboration.

ISO 17444 consists of the following parts, under the general title *Electronic fee collection — Charging performance*:

- *Part 1: Metrics* [Technical Specification]
- *Part 2: Examination framework*¹⁾

1) To be published.

Introduction

Electronic Tolling systems are complex distributed systems involving critical technology such as dedicated short-range communication (DSRC) and global navigation satellite systems (GNSS) both subject to a certain random behaviour that may affect the computation of the charges. Thus, in order to protect the interests of the different involved stakeholders, in particular Service Users and Toll Chargers, it is essential to define metrics that measure the performance of the system as far as computation of charges is concerned and ensure that the potential resulting errors in terms of size and probability are acceptable. These metrics will be an essential tool when establishing requirements for the systems and also for examination of the system capabilities both during acceptance and during the operational life of the system.

In addition, in order to ensure the interoperability of different systems it will be necessary to agree on common metrics to be used and on the actual values that define the required acceptable performances, although this is not covered in this part of ISO/TS 17444.

Toll schemes take on various forms as identified in ISO/TS 17575 (all parts) and ISO 14906. In order to create a uniform performance metric specification, toll schemes are grouped into two classes, based on the character of their primary charging variable: Charging based on discrete events (charges when a vehicle crosses or stands within a certain zone), and those based on a continuous measurement (duration or distance).

The following are examples of discrete (event-based) toll schemes.

- Single object charging: a road section, bypass, bridge, tunnel, mountain pass or even a ferry, charged per passage; most tolled bridges belong to this category.
- Closed road charging: a fixed amount is charged for a certain combination of entry and exit on a motorway or other closed road network; many of the motorways in Southern Europe belong to this category.
- Discrete road links charging: determined by usage of specified road links, whether or not used in their entirety.

EXAMPLE German heavy goods vehicle (HGV) charge.

- Charging for cordon crossing: triggered by passing in or out through a cordon that encircles a city core, for example.

EXAMPLE Stockholm congestion charging.

The following are examples of continuous toll schemes.

- Charging based on direct distance measurement: defined as an amount per kilometre driven.

EXAMPLE Switzerland's HGV charge; US basic vehicle miles travelled approach.

- Charging based on direct distance measurement in different tariff zones or road types: defined as an amount per kilometre driven, with different tariffs applying in different zones or on different road types. This is a widely discussed approach, also known as Time-Distance-Place charging, and is under consideration in many European countries. The pilot programme in Oregon is an example from North America.
- Time in use charge: determined by the accumulated time a vehicle has been in operation, or, alternatively, by the time the vehicle has been present inside a predefined zone.

In all these examples of toll schemes, tolls may additionally vary as a function of vehicle class characteristics such as trailer presence, number of axles, taxation class, operating function, and depending on time of day or day of week, so that, for example, tariffs are higher in rush hour and lower on the weekends.

With this degree of complexity, it is not surprising to find that the attempts to evaluate and compare technical solutions for Service User charging have been made on an individual basis each time a procurement or study is initiated, and with only limited ability to reuse prior comparisons made by other testing entities.

The identification of different types of schemes as proposed in ISO/TS 17575 (all parts) and their grouping in the mentioned two classes is described in Table 1, which also identifies the examples mentioned above.

Table 1 — Tolling scheme designs grouped according to Scheme categories

Examples	Scheme type	ISO/TS 17575 category
Single object charging	Discrete	Sectioned roads pricing
Closed road charging	Discrete	Sectioned roads pricing
Discrete road links charging	Discrete	Sectioned roads pricing
Charging for cordon crossing	Discrete	Cordon pricing
Time in use charge	Continuous	Area pricing – time
Cumulative distance charge	Continuous	Area pricing – distance
Charging for cumulative distance (or time) in different zones (or by road type)	Continuous	Area pricing – distance

No toll schemes are purely continuous. At the very least, a system must be able to stop accumulating charges when it leaves a jurisdiction in which a charge is due, and resume charging when it returns or enters another. Additionally, many Charging Schemes are set up so that the tariff is modified using discrete parameters, such as spatial zones, time spans, vehicle classes, etc. Under those circumstances, each unit of distance or time costs a different amount depending, for example, on whether it takes place inside or outside an area, such as a city, whether a trip takes place in rush hour or at night, or depending on what type of vehicle is used. In this part of ISO/TS 17444 references to a “continuous system” have to be understood as those systems having some continuous behaviour even though they may also integrate some discrete nature. References to “discrete systems” are limited to those systems that are purely discrete.

In these schemes, all the discrete parts (zones, cordons, events, time, vehicle class, etc.) that a system has to identify are translated into a particular tariff (e.g. price per kilometre) that has to be applied to the measured continuous variable (e.g. travelled kilometres) resulting in another continuous parameter, money.

Among the different Interoperability Application Profiles defined in CEN/TS 16331, only Section Road Tolling has a purely discrete nature while the other four profiles have both discrete and continuous natures.

Some features of discrete and continuous toll schemes that are of relevance for the definition of metrics proposed in this part of ISO/TS 17444 are analysed below.

Discrete toll schemes

In a discrete toll scheme, distinct events are associated with the identification of Charge Objects. It can be that a vehicle crossed a cordon, passed a bridge, was present in an area, or in an area on a given day. An event that takes place can either be correctly recorded by the system or can be missed. However, there is also the possibility that an event is recorded even though it did not actually take place. This is summarized in the following matrix in Table 2.

Table 2 — Theoretical event decision matrix for discrete schemes

Event Matrix		System detects Chargeable Event	
		Yes	No
Chargeable Event takes place	Yes	Correct Charging	Missed Recognition (Undercharging)
	No	False Positive (Overcharging)	Correct Non-charging

In this matrix there are two successful scenarios (Correct Charging and Correct Non-charging), and two unsuccessful (Missed Recognition and False Positive). The unsuccessful scenarios have very different consequences. A Missed Recognition, i.e. a Chargeable Event that takes place but is not recorded by the system, implies an undercharging, as the Service User is not charged.

In the case of False Positive, a *vehicle that is not using the toll domain* is being charged for an event which did not take place. This implies an overcharging which is in violation of the legal rights of the *Service User*, and ultimately risks eroding trust in the system.

This part of ISO/TS 17444 therefore makes a distinction between the two types of errors and defines associated metrics to protect the interests of the Toll Charger and Service Users in terms of the allowed probabilities of those events.

Continuous toll schemes

A continuous toll scheme is one where the charge is calculated using accumulated time or distance the base tariff is applied to.

Note that a discrete scheme with a large number of Charge Objects would lead to charging incremental variations, and is hence approaching a continuous scheme (the higher the number of events, the closer such schemes are to a continuous scheme). In any case, this would still formally be a discrete scheme.

In discrete toll schemes errors are binary: either a Charge Event is correctly recorded or it is not. However, in continuous schemes the errors are relatively small and they vary continuously, i.e. those errors are real (in the mathematical sense) variables instead of logical variables. Figure 1 shows different levels of dispersion and different directions of bias. The horizontal axis shows the size of the errors and the vertical axis the probability density. The vertical line in each plot represents zero charging error. Note that it is possible to have small dispersion (i.e. a small standard deviation) that still biases charging high or low (i.e. not accurate).

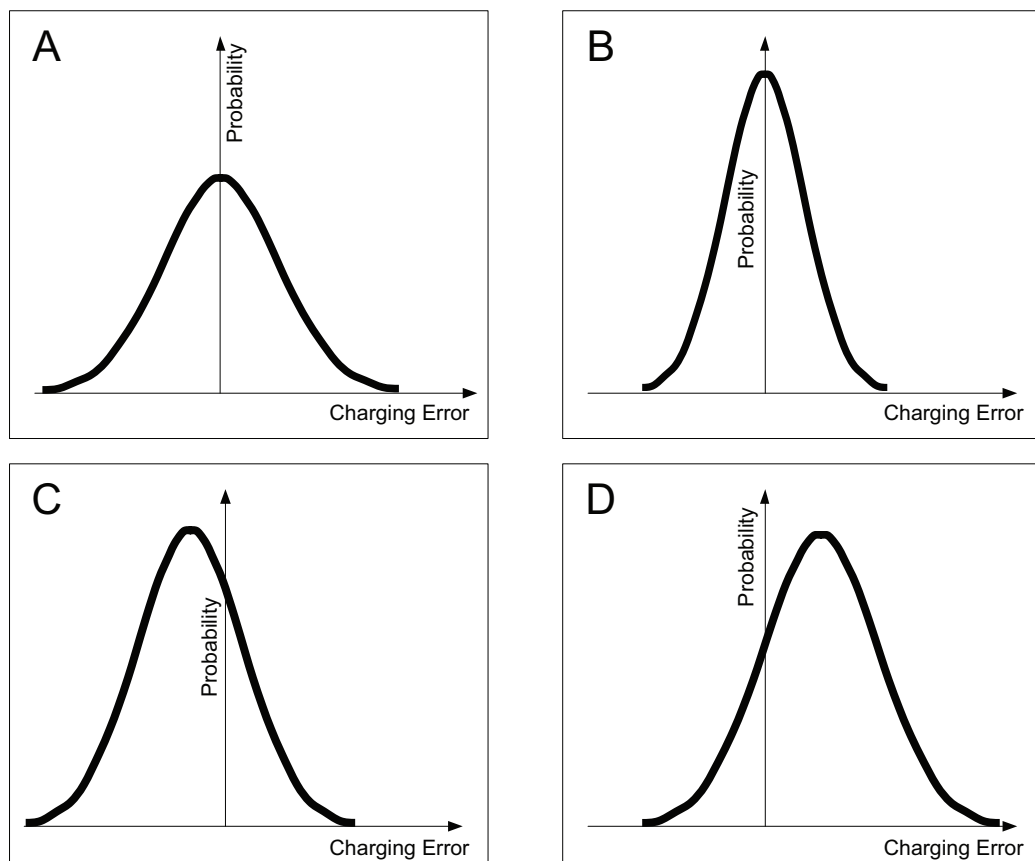


Figure 1 — Idealized plots of error distribution of four different result sets

In Figure 1 Chart A symbolizes the results from a Front End with more dispersion than that used for Chart B. For all parties involved, B is preferable to A. Charts C and D show two Front Ends with the same standard deviation, but where Chart C shows one that is consistently undercharging, and D one that is consistently overcharging road usage.

By defining an *Accepted Charging Error Interval* to the chart, with a lower and an upper bound, as shown in Figure 2, it is possible to state that for a system to be accepted it must perform so that some minimum share of the measurements fall inside the interval specified as accepted by the *Toll Charger*.

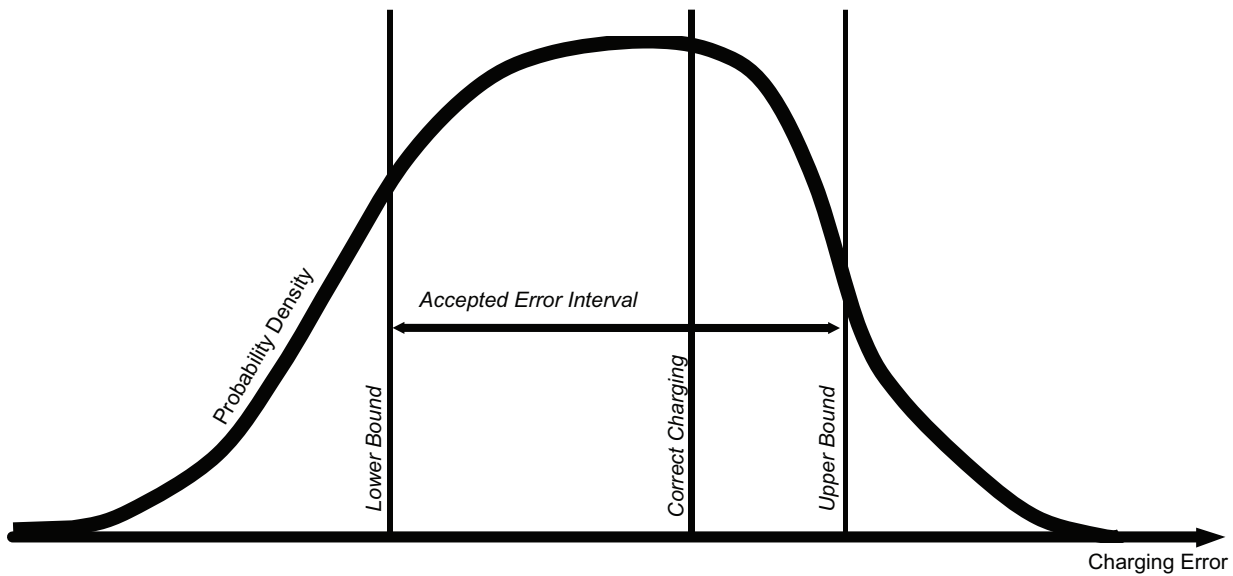


Figure 2 — Definition of Accepted Error Interval

Setting the upper and lower bounds far apart relaxes requirements on the equipment evaluated, while setting them closer together would make the requirement to fulfil harder to pass. By setting the upper bound closer to the correct charging value and the lower bound farther away, the Toll Charger can formalize exactly how much more important it is to avoid overcharging than it is to avoid undercharging. By defining those bounds (*Accepted Charging Error Interval*) together with the probabilities to be inside and above those bounds the Toll Charger can define precisely its requirements distinguishing between overcharging and undercharging. In reality no scheme is purely continuous and all foreseeable continuous schemes have some discrete components. The discrete nature of real systems can be either associated to the physical border of a country (continuous measurements take place only if vehicle is within the country) or to the identification of different urban zones or roads where different tariffs (per unit of time or distance) are applied.

Thus, continuous schemes will have associated metrics that are specific to those continuous systems but the ones identified for discrete schemes will also be applicable.

Electronic fee collection — Charging performance —

Part 1: Metrics

1 Scope

This part of ISO/TS 17444 defines metrics for the charging performance of electronic fee collection (EFC) systems in terms of the level of errors associated with charging computation.

This part of ISO/TS 17444 is a toolbox standard of metrics. The detailed choice of metrics depends on the application and the respective context.

This part of ISO/TS 17444 describes a set of metrics with appropriate definitions, principles and formulations, which together make up a reference framework for the establishment of requirements for EFC systems and their later examination of the *charging performance*.

The charging performance metrics defined in this part of ISO/TS 17444 are intended for use with any Charging Scheme, regardless of its technical underpinnings, system architecture, tariff structure, geographical coverage, or organizational model. They are defined to treat technical details that may be different among technologies and vendors or vary over time as a “black box”.

They focus solely on the outcome of the charging process – i.e. the amount charged in relation to a pre-measured or theoretically correct amount – rather than intermediate variables from various components as sensors, such as positioning accuracy, signal range, or optical resolution. This approach ensures comparable results for each metric in all relevant situations.

The metrics are designed to cover the information exchanged on the Front End interface and the interoperability interfaces between Toll Service Providers, Toll Chargers and Road Users as well as on the End-to-End level.

Metrics on the following information exchanges are defined:

- Charge Reports;
- Toll Declarations;
- Billing Details and associated event data;
- Payment Claims on the level of user accounts;
- User Accounts;
- End-to-End metrics which assess the overall performance of the charging process.

The details on the rationale of this choice are described in 5.1.

The proposed metrics are specifically addressed to protect the interests of the actors in a toll system, such as Toll Service Providers, Toll Chargers and Road Users. The metrics can be used to define requirements (e.g. for requests for proposals) and for performance assessment.

This part of ISO/TS 17444 recognizes two types of situations where a performance assessment is necessary:

- a) when an assessment is carried out during a limited time span, such as when formulating requirements and assessing systems for acquisition purposes, conducting acceptance testing as part of the commissioning process, or as part of a certification procedure. Any one of these types of assessment is referred to as an evaluation;

- b) when an assessment is needed as an ongoing supervision process, throughout the lifetime of a system, in order to validate contracted service levels, to identify fraud or malfunction, or to support ongoing maintenance and performance improvement processes. This type of assessment is referred to as monitoring.

NOTE 1 Definitions and metrics proposed in this part of ISO/TS 17444 are intended for both situations.

The following are not covered by this part of ISO/TS 17444.

- This part of ISO/TS 17444 does not propose specific numeric performance bounds, or average or worst-case error bounds in percentage or monetary units. Those decisions are left to the Toll Charger (or to agreements between Toll Charger and Service Provider), while providing a way to be sure that there is a consistent framework for describing system requirements when writing Request for proposals, for system comparisons during acquisition, for test results, for Service Level Agreements, and ongoing (post-deployment) performance monitoring.
- This part of ISO/TS 17444 does not consider the evaluation of the expected performance of a system based on modelling and measured data from trial at another place.
- This part of ISO/TS 17444 does not consider the specification of a common reference system which would be required for comparison of performance between systems.
- This part of ISO/TS 17444 does not specify metrics on parts of tolling systems other than the charging process chain, such as:
 - enforcement system;
 - security measures.
- This part of ISO/TS 17444 does not cover metrics on parts of the charging processing chain which are considered an internal matter of one of the interoperability partners:
 - equipment performance, e.g. for on-board equipment, road-side equipment or data centres such as signal range, optical resolution or computing system availability;
 - position performance metrics: The quality of data generated by position sensors is considered as an internal aspect of the Front End. It is masked by correction algorithms, filtering, inferring of data and the robustness of the Charge Object recognition algorithms.

Even though some of these aspects have a direct impact on charging performance, they are not considered explicitly in this part of ISO/TS 17444.

NOTE 2 While the Front End interface is considered as internal to the Toll Service Provider domain of responsibility, it is still covered by metrics. There are two reasons for this exception: firstly a set of standards [ISO/TS 17575 (all parts)] exists on this interface and secondly the information exchanged on this interface is also part on the TSP-TC interface (ISO 12855) and therefore metrics are needed.

2 Normative references

The following referenced documents are indispensable for the application of this document. For dated references, only the edition cited applies. For undated references, the latest edition of the referenced document (including any amendments) applies.

ISO 14906, *Electronic fee collection — Application interface definition for dedicated short-range communication*

ISO 17573, *Electronic fee collection — Systems architecture for vehicle-related tolling*

ISO 12855, *Electronic fee collection — Information exchange between service provision and toll charging*

ISO/TS 17575-1, *Electronic fee collection — Application interface definition for autonomous systems — Part 1: Charging*

3 Terms and definitions

For the purposes of this document, the following terms and definitions apply.

3.1

Absolute Charging Error

difference between the measured charge (toll) value and the actual value (as measured by a reference system)

NOTE A positive error means that the measurement exceeds the actual one.

3.2

Accepted Charging Error Interval

interval of the Relative Charging Error varying from a negative (undercharge) to a positive (overcharge) value that the Toll Charger considers as acceptable, i.e. correct charging

3.3

average relative charging error

ratio between the sum of computed charges associated to a set of vehicles during a certain period of time and the actual due charge (for the same set of vehicles and the same period) minus 1

3.4

Billing Detail

for a given Transport Service, all necessary data required to determine and/or verify the amount due for the Service User

NOTE 1 If the data is accepted by both the Toll Charger and the Toll Service Provider, then it is called a concluded Billing Detail which can be used to issue a Payment Claim.

NOTE 2 For a given Transport Service, the Billing Detail is referring to one or several valid Toll Declaration(s). A valid Billing Detail has to fulfil formal requirements, including security requirements, agreed between the Toll Service Provider and the Toll Charger.

[ISO 12855:2012, definition 3.1]

3.5

Chargeable Event

event in which a vehicle passes through a Charge Object that implies that vehicle has to be charged or a different rate (e.g. price per kilometre) applied

NOTE This event refers to the use of a certain object and not to the mechanisms by which detection is produced.

3.6

Charge Object

any object that is part of the toll context description that may be charged for its use under certain conditions

NOTE Adapted from ISO/TS 17575-1:2010.

3.7

Charging Period

period of time which is used to define the frequency of the Toll Declarations, when Charge Reports are aggregated to form Toll Declarations

NOTE If the Charging Period is set to 24 hrs then in the Toll Context Data a single Toll Declaration is submitted for each 24 hr period for each Service User.

3.8

Charge-Relevant Event

event occurring within a tolling system, which is relevant for charge calculation, but not for the detection of a Charge Object itself

NOTE Examples of this type of event are changes in vehicle category or time zone.

3.9 Charge Report
data structure transmitted from the Front End to the Back End to report road usage data and supplementary related information

NOTE In 2009/750/EC Charge Report is referred as "Toll Declaration".

[ISO 12855:2012, definition 3.2]

3.10 discrete toll scheme
toll scheme where the charge is calculated based on distinct events associated with the identification of Charge Objects such as crossing a cordon, passing a bridge, being present in an area, etc.

NOTE Each event is associated with a certain charge.

3.11 continuous toll scheme
toll scheme where the charge is calculated based on the accumulation of continuously measured parameter(s), such as distance, time, etc.

3.12 Event Detection
element of the system responsible for detecting Chargeable Events associated with a Charge Object

NOTE The output of this element provides the key information to compute a charge in a discrete scheme, or act as input for a function in a continuous scheme (e.g. for zones where distance tariffs apply).

3.13 evaluation
process applied for measuring a specific metric or set of metrics during an evaluation phase

3.14 Front End
part(s) of the toll system where road usage data for an individual Road User are collected, processed and delivered to the Back End

NOTE The Front End comprises the on-board equipment and an optional proxy.

[ISO/TS 17575-1:2010, definition 3.13]

3.15 False Positive Event
Chargeable Event that did not take place but is recorded by the system

3.16 Missed Recognition Event
Chargeable Event that takes place but is not recorded by the system

3.17 monitoring
process within a distributed system for collecting and storing state data

NOTE This can be used to observe metrics during operation.

3.18 overcharging
situation where the calculated charge is above the Accepted Charging Error Interval

3.19**Payment Claim**

recurring statement referring to concluded Billing Details made available to the Toll Service Provider by the Toll Charger who indicated and justified the amount due

NOTE The Payment Claim is used by the Toll Service Provider to issue financial objects to its customers (e.g. invoices on behalf of the Toll Charger). A given toll Payment Claim is referring to concluded Billing Details and takes into account any specific commercial conditions applicable to a vehicle, a fleet of vehicles, a customer of a Toll Service Provider and/or a Toll Service Provider. A valid "Payment Claim" has to fulfil formal requirements, including security requirements, agreed between the Toll Service Provider and the Toll Charger.

[ISO 12855:2012, definition 3.14]

3.20**performance metrics**

specific calculations used to describe the charging performance of a system

NOTE These calculations are technology and schema-independent.

3.21**Relative Charging Error**

ratio between the Absolute Charging Error and the actual value, i.e. $\text{Relative Charging Error} = \text{Absolute Charging Error} / \text{Actual Value}$

NOTE The topic of Actual Values and how to handle them will be dealt with in the examination framework.

3.22**representative trips**

trips that are of a distance larger than a defined threshold and so have to be considered by the related metrics

NOTE 1 Only trips which exceed the threshold and cover the specific types of roads of the Toll Regime have to be considered.

NOTE 2 The threshold may be defined as zero.

3.23**Service User
User**

customer of a Toll Service Provider, one liable for toll, the owner of the vehicle, a fleet operator, a driver, etc., depending on the context

[ISO 12855:2012, definition 3.29]

3.24**successful charging**

situation where the User has been correctly charged according to the rules of the system

NOTE For discrete Charging Schemes this means that for a given chargeable journey the Chargeable Events have been correctly identified and for continuous schemes that the Charge determined is within the Accepted Charging Error Interval.

3.25**Toll Charger**

legal entity charging toll for vehicles in a toll domain

NOTE In other documents the terms operator or toll operator can be used.

[ISO 17573:2010, definition 3.16]

3.26**Toll Service Provider**

legal entity providing customer toll services on one or more toll domains for one or more classes of vehicle

NOTE 1 In other documents the terms "issuer" or "contract issuer" can be used.

NOTE 2 The Toll Service Provider can provide the OBE or can provide only a magnetic card or a smart card to be used with OBE provided by a third party (just as a mobile telephone and a SIM card can be obtained from different parties).

NOTE 3 The Toll Service Provider is responsible for the operation (functioning) of the OBE with respect to tolling.

NOTE 4 Adapted from ISO 17573:2010.

3.27

Toll Declaration

statement to a Toll Charger that confirms the presence of a vehicle in a toll domain in a format agreed between the Toll Service Provider and the Toll Charger

[ISO 12855:2012, definition 3.19]

NOTE A valid Toll Declaration has to fulfill formal requirements, including security requirements, agreed between the Toll Service Provider and the Toll Charger.

3.28

trip

part of space-time trajectory of a particular vehicle within a Toll Regime

NOTE The exact definition of the start and end of trip is dependent on the Toll Regime and technology approach.

3.29

undercharging

situation where the calculated charge is below the Accepted Charging Error Interval

3.30

User Account

assets, liabilities, income, expenses, and equity of a Service User in his relationship to his Toll Service Provider

3.31

User Complaint

complaints related to service provision received by the Toll Service Provider from its Users via contact channels

4 Abbreviated terms

CCTV	Closed Circuit Television
DSRC	Dedicated Short-Range Communications (ISO 14906)
E2E	End-to-End
EFC	Electronic Fee Collection (ISO 17573)
EETS	European Electronic Toll Service (ISO 17573)
FE	Front End (ISO/TS 17575-1)
GNSS	Global Navigation Satellite System
NOTE	A generic term used for a satellite localization system such as GPS and GALILEO.
ITS	Intelligent Transport Systems
OBE	On-Board Equipment (ISO 17573)
OBU	On-Board Unit
RSE	Roadside Equipment
SLA	Service Level Agreement (ISO/IEC 20000-1)
TSP	Toll Service Provider (ISO 17573)
TC	Toll Charger (ISO 17573)

5 Definition of charging performance metrics

5.1 General

Charging performance metrics can be applied at different levels of the processing chain from the lowest level where the basic charging information is measured to the final computation of charging information to be provided to Toll Chargers and Service Users.

In practice, it is worth defining metrics for the information transmitted through the established (and standardized) interfaces, plus those that can be defined at an overall Tolling Scheme Level, so call End-to-End Metrics.

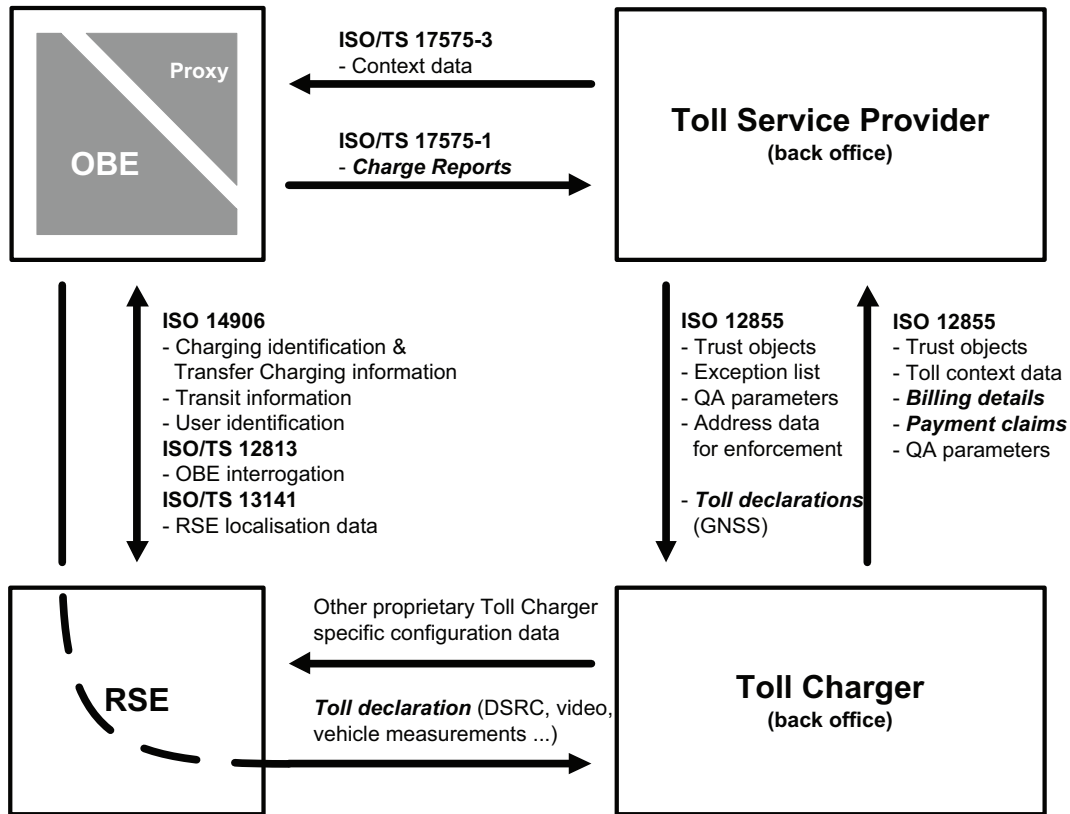


Figure 3 — EFC Architecture and Interfaces

In accordance with ISO 17573, and with the associated interface standards ISO/TS 17575-1 and ISO 12855, metrics shall be based on the following charging information exchanges highlighted in bold italics in Figure 3:

- Charge Reports as transmitted from the Front End to the Service Provider’s Back End (ISO/TS 17575-1:2012, 6.2).
- Charging identification and Transfer Charging information as exchanged between the OBE and the RSE for DSRC systems (ISO 14906).
- Toll Declarations as transmitted from the Service Provider to the Toll Charger for autonomous systems (ISO 12855:2012, 5.2.7).
- Billing Details as transmitted from the Toll Charger to the Service Provider (ISO 12855:2012, 5.2.8).
- Payment Claims transmitted from the Toll Charger to the Service Provider (ISO 12855:2012, 5.2.9).

NOTE 1 Payment Claims form the basis for User Statements/Invoices as transmitted in the interface between Service Provider and the User (User Account).

Charging Metrics defined at the level of Charge Reports and Toll Declarations focus on the ability of the Service Provider Front End and associated back-office functions to correctly detect and report Charging Events. Charging Metrics defined at the level of Billing Details and Payment Claims focus on the Toll Charger’s ability to correctly determine the Charges incurred by Users based on the Toll Declarations received. Charging Metrics defined at the level of User Statements/invoices cover the overall Charging Performance for an individual User, which include other capabilities of the complete system (communications reliability, infrastructure availability, etc.).

In addition to the metrics that can be defined at the level of interfaces, it is often common practice to define metrics which measure the overall Charging Performance in a toll scheme, in particular for procurements of toll schemes where the roles of Toll Charger and Service Provider are provided by a single entity; these are defined as End-to-End Metrics in this part of ISO/TS 17444. In toll schemes where the roles of Toll Charger and

Service Provider are performed by different entities then the E2E metrics measure the combined performance of the Toll Charger and Service Provider.

For the purposes of this part of ISO/TS 17444 Charging Performance metrics are defined for the six levels below and are independently presented in 5.3 to 5.8

- End-to-End Metrics;
- User Account Metrics;
- Payment Claim Metrics;
- Billing Details Metrics;
- Toll Declaration Metrics;
- Charge Report Metrics.

NOTE 2 The Charging Metrics defined in each subclause are not intended to be mutually exclusive and the decision as to which Charging Metrics to use is out of the scope of this part of ISO/TS 17444.

Figure 4 shows the hierarchy of Charging Metrics as defined in this part of ISO/TS 17444 and illustrates how the discrete and continuous nature of Tolling Schemes have an impact on the metrics that can be defined for a particular scheme under consideration.

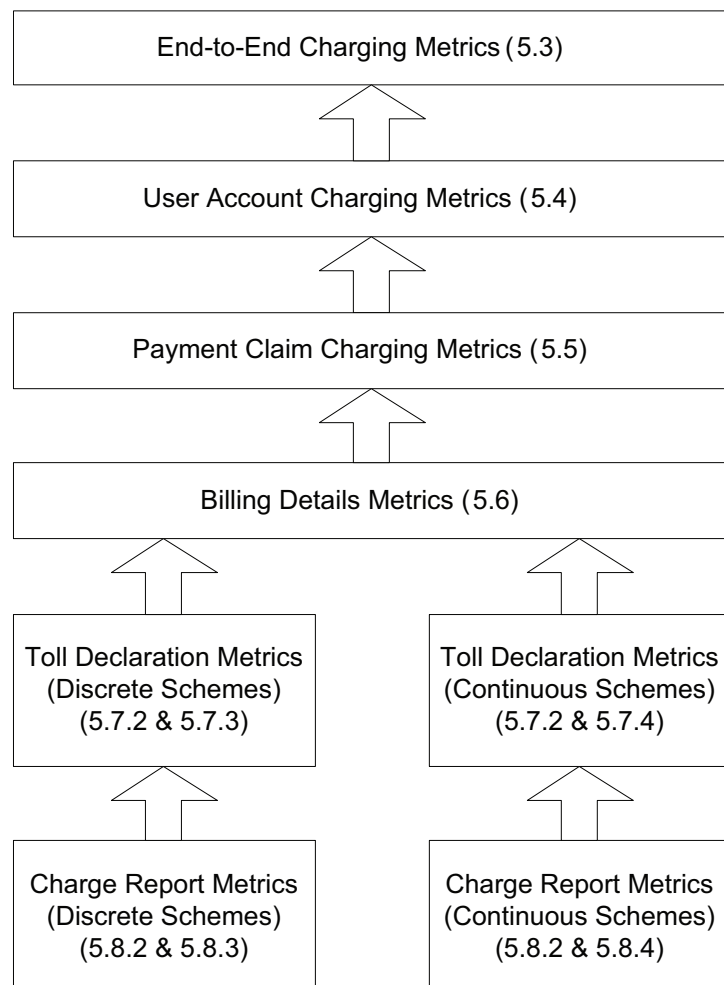


Figure 4 — Charging Metrics Hierarchy

For the purposes of this part of ISO/TS 17444 it is assumed that metrics defined at a level of Billing Details or higher are independent of whether the Tolling Scheme is continuous or discrete and it is only metrics that are defined at the Toll Declaration or Charge Report level that are dependent on the Scheme Type.

Figure 5 presents five different examples for defining options for measuring Charging Metrics in a particular Tolling Scheme.

- 1) Measures charging performance at each information interface independently from each other (with reference to the outcome of the previous stage). This is applicable for both DSRC and Autonomous systems.
- 2) Measures charging performance at each information interface between Toll Service Provider and Toll Charger. This is most applicable to Autonomous systems.
- 3) Measures the charging performance of the Toll Charger at the Billing Detail and Payment Claim levels independently from the performance of the Toll Service Provider for allocating charges to User Accounts. This is only recommended for scenarios where the Toll Charger is responsible for the Usage Evidence (DSRC or CCTV tolling). Otherwise, the performance cannot be attributed to a single responsible entity.
- 4) Measures the charging performance of the Toll Charger at the Payment Claim level independently from the performance of the Toll Service Provider for allocating charges to User Accounts. This is only recommended for scenarios where the Toll Charger is responsible for the Usage Evidence (DSRC or CCTV tolling) and where there is no aggregation of Billing Details within Payment Claims.
- 5) Measures the End-to-End charging performance of the whole Tolling Scheme. This measurement represents the User's perception. It can further be recommended if all charging functions are performed by the same monolithic entity.

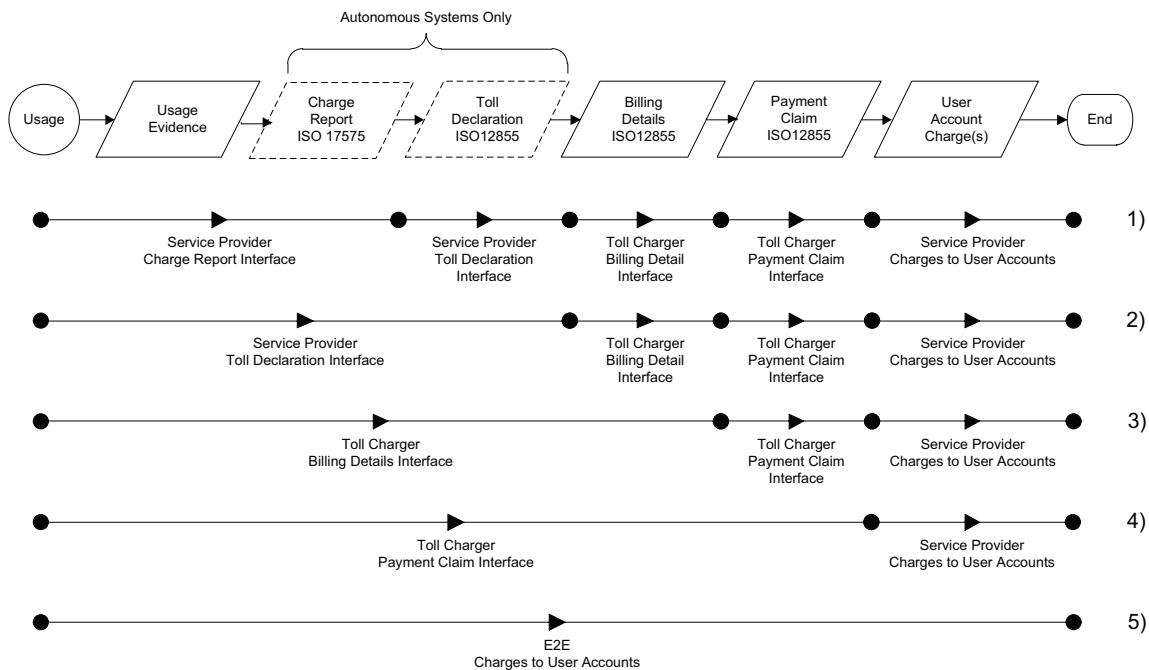


Figure 5 — Charging Metrics mapping to toll scheme Implementations

The reference value for the measurement is an important issue. Each black filled circle represents the reference value for performance evaluation for the next stage (to the right).

NOTE The actual presence of a vehicle cannot be taken as a reference for performance measurement because it is "unknown". For every performance metric which involves comparison to the "real world" a tangible reference ("usage evidence") needs to be defined: the record generated to monitor the performance (CCTV, loop detection, manual auditor log file, Enforcement Record...) will be elaborated in ISO/TS 17444-2.

5.2 Metric Identification

The metric's unique identifiers are defined in the following manner: CM-xxx-aa

Where:

- 1) CM signifies "charging metrics";

NOTE This is to allow distinctions in case of expansion to other performance metrics.

- 2) xxx identifies the level of the metric:
 - "E2E" for "End-to-End";
 - "UA" for "User Account";
 - "PC" for "Payment Claim";
 - "BD" for "Billing Details";
 - "TD" for "Toll Declaration/Charge Report", which is also subdivided into:
 - "DTD", signifying "Toll Declaration/Charge Report" for discrete systems, and
 - "CTD", signifying "Toll Declaration/Charge Report" for continuous systems;
 - "CR" for "Charge Report", which is also subdivided into:
 - "DCR", signifying "Charge Report" for discrete systems, and
 - "CCR", signifying "Charge Report" for continuous systems;
- 3) aa identifies the unique number within the level.

5.3 End-to-End metrics

End-to-End Charging Performance Metrics are defined at a level which determines the overall charging performance of a toll scheme across all interfaces on the overall system level for a group of users.

Table 3 provides details of the metrics that have been defined for End-to-End Charging Metrics.

Table 3 — End-to-End Charging Metrics

Metric ID	Metric Name	Description	Definition
CM-E2E-1	E2E Correct Charging Rate	Metric that measures the overall probability that Users are correctly Charged by a toll scheme.	The probability that for any set of <i>representative trips</i> travelled by a set of Users during a time span Δt the Average Relative Charging Error is within the Accepted Charging Error Interval.
CM-E2E-2	E2E Overcharging Rate	Metric that measures the overall probability that Users are overcharged by a toll scheme.	The probability that for any set of <i>representative trips</i> travelled by a set of Users during a time span Δt the Average Relative Charging Error is above the Accepted Charging Error Interval.
CM-E2E-3	E2E Undercharging Rate	Metric that measures the overall probability that Users are undercharged by a toll scheme.	The probability that for any set of <i>representative trips</i> travelled by a set of Users during a time span Δt the Average Relative Charging Error is below the Accepted Charging Error Interval.
CM-E2E-4	E2E Late Charging	Metric that measures the overall level of late charging within a toll scheme, i.e. the proportion of Charges that appear later than the defined period for Charge Events to appear on User Statements.	The probability that for any set of <i>representative trips</i> travelled by a set of Users during a time span Δt the Charge Events appear on the User Statement later than the defined period for the Charging Scheme.

5.4 User Account Metrics

User Account Metrics measure the Charging Performance at the level of the individual Users and can be related to the number of User Complaints related to Charging received by the Toll Service Provider.

Table 4 provides details of the metrics that have been defined for User Account Metrics.

Table 4 — User Account Metrics

Metric ID	Metric Name	Description	Definition
CM-UA-1	UA – Correct Charging Rate	Metric that measures the level of Successful Charging at the individual User Account Level.	The probability that for any set of <i>representative trips</i> travelled by a given User during the invoicing period the Average Relative Charging Error is within the Accepted Charging Error Interval.
CM-UA-2	UA – Overcharging Rate	Metric that measures the level of overcharging at the individual User Account Level.	The probability that for any set of <i>representative trips</i> travelled by a given User during the invoicing period the Average Relative Charging Error is above the Accepted Charging Error Interval.
CM-UA-3	UA – Undercharging Rate	Metric that measures the level of Undercharging at the individual User Account Level.	The probability that for any set of <i>representative trips</i> travelled by a given User during the invoicing period the Average Relative Charging Error is below the Accepted Charging Error Interval.
CM-UA-4	UA – Accurate application of Payments and Refunds	Metric that measures the accuracy of Payments and Refunds to individual User Accounts.	The probability that payment transactions associated to a User Account are correct.
CM-UA-5	UA – Accurate Personalization of OBU	Metric that measures the accuracy of the personalization of charging relevant parameters into OBUs.	The probability that the personalization for any set of Users during a time span Δt is correct.

5.5 Payment Claim Metrics

Payment Claim Metrics measure the Charging Performance at the level of the Payment Claims between TC and TSP, at the level of line items within usage statements and, depending on the level of aggregation within a Charging Scheme, it can relate to individual Billing Details.

NOTE In Charging Schemes where Payment Claims are originated by the Toll Service Provider and forwarded to the Toll Charger for checking, these metrics could be applicable to the Toll Service Provider.

Table 5 provides details of the metrics that have been defined for Payment Claim Metrics.

Table 5 — Payment Claim Metrics

Metric ID	Metric name	Description	Definition
CM-PC-1	PC – Correct Charging Rate	Metric that measures the correctness of Payment Claims produced by the Toll Charger.	The probability that for any given Payment Claim, the Average Relative Charging Error is within the Accepted Charging Error Interval. This measures the probability that the relative error in the Payment Claim used for invoicing is within defined limits to protect the interest of both the Toll Charger and the Service User.
CM-PC-2	PC – Overcharging Rate	Metric that measures the level of overcharging in Payment Claims produced by the Toll Charger.	The probability that for any given Payment Claim, the Average Relative Charging Error is above the Accepted Charging Error Interval. This measures the probability that the relative error in the Payment Claim used for invoicing is above a defined limit. Protecting the interest of the Service User (i.e. avoiding excessive overcharging) requires that this probability be below a very small value.
CM-PC-3	PC – Undercharging Rate	Metric that measures the level of Undercharging in Payment Claims produced by the Toll Charger.	The probability that for any given Payment Claim, the Average Relative Charging Error is below the Accepted Charging Error Interval.
CM-PC-4	PC – Latency – TC	Metric that measures the performance (Time Delay) of the Toll Charger in generating Payment Claims.	Average Time it takes between the approval for a Billing Detail being received by the Toll Charger and the time the associated Payment Claim is created/sent by the Toll Charger.
CM-PC-5	PC – Late Payment Claims	Metric that measures the overall level of late Payment Claims within a Charging Scheme, i.e. the proportion of Charges that appear later than the defined period for Charge Events to appear on User Statements.	The proportion of Payment Claims received by the TSP in a defined period where the time between the Chargeable Event and the receipt of the associated Payment Claim is greater than the defined period for the Charging Scheme.
CM-PC-6	PC – Rejected Payment Claim Rate	Metric that measures the level of Payment Claims rejected by the Service Provider in relation to the transmitted Payment Claims.	Ratio of correctly rejected Payment Claims in relation to the total number of Payment Claims received in the measurement period.

5.6 Billing Details Metrics

Billing Details Metrics measure the Charging Performance at the level of the Billing Details exchanged between TC and TSP and depending on the level of aggregation within a Charging Scheme, can directly relate to line items within usage statements and can relate to individual Charge Events, individual trips or charges incurred for a defined Charging Period.

In DSRC Schemes the Billing Details Metrics can be used to measure the performance of the Toll Charger to correctly detect Charge events.

NOTE In Charging Schemes where Billing Details are originated by the Toll Service Provider and forwarded to the Toll Charger for checking, these metrics could be applicable to the Toll Service Provider.

Table 6 provides details of the metrics that have been defined for Billing Details Metrics.

Table 6 — Billing Details Metrics

Metric ID	Metric name	Description	Definition
CM-BD-1	BD – Correct Charging Rate	Metric that measures the correctness of Billing Details produced by the Toll Charger.	The probability that for any given Billing Detail, the Average Relative Charging Error is within the Accepted Charging Error Interval. This measures the probability that the relative error in the Billing Details used for invoicing is within a defined limit to protect the interest of both the Toll Charger and the Service User.
CM-BD-2	BD – Overcharging Rate	Metric that measures the level of overcharging in Billing Details produced by the Toll Charger.	The probability that for any given Billing Detail, the Average Relative Charging Error is above the Accepted Charging Error Interval. This measures the probability that the relative error in the Billing Details ultimately used for invoicing is above a defined limit. Protecting the interest of the Service User (i.e. avoiding excessive overcharging) requires that this probability be below a very small value.
CM-BD-3	BD – Undercharging Rate	Metric that measures the level of Undercharging in Billing Details produced by the Toll Charger.	The probability that for any given Billing Detail, the Average Relative Charging Error is below the Accepted Charging Error Interval.
CM-BD-4	BD – Incorrect Charging Rate	Metric that measures the processing of incorrect Billing Details. This happens when a Charge Event is correctly detected, but the Charge Report, Toll Declaration or Usage Data contains incorrect data.	The probability that for any predefined Chargeable Event that is recorded, a respective Billing Detail is incorrectly generated (the incorrect data are not detected). "Predefined" may be defined by random measurements of determined Charge Events.
CM-BD-5	BD – Latency – TC	Metric that measures the performance (Time Delay) of the Toll Charger in generating Billing Details.	Average Time it takes between a Toll Declaration being received by the Toll Charger and the time the associated Billing Detail is created/sent by the Toll Charger. Most relevant for autonomous systems (Toll Declarations are solely generated by a TSP).
CM-BD-6	BD – Late Billing Details	Metric that measures the overall level of late Billing Details within a Charging Scheme, i.e. the proportion of Billing Details that are received later than the defined period for the delay between Chargeable Events and Billing Details to be received in a Charging Scheme.	The proportion of Billing Details received by the TSP in a defined period where the time between the Chargeable Event and the receipt of the associated Billing Detail is greater than the defined period for the Charging Scheme. Most relevant for infrastructure-based systems.
CM-BD-7	BD – Rejected Billing Details Rate	Metric that measures the level of Billing Details rejected by the Service Provider in relation to the total number of sent Billing Details. A rejection may result from any failed check of Authenticators, conformance to tariff objects and the plausibility of the received Billing Details, etc., by the TSP.	Ratio of correctly rejected Billing Details in relation to the total number of Billing Details received in the measurement period.

Table 6 (continued)

Metric ID	Metric name	Description	Definition
CM-BD-8	BD – Incorrect rejected Billing Details Rate	Metric that measures the level of Billing Details incorrectly rejected by the Service Provider in relation to the total number of rejected Billing Details.	The ratio of the incorrectly rejected Billing Details in relation to the total number of rejected Billing Details in the measurement period.
CM-BD-9	BD – Inferred Billing Details Rate	Metric that measures the level of inferred Billing Details in relation to the total number of Billing Details. An inferred Billing Detail is derived by either calculating a Charge Event based on neighbouring events or by analysing video pictures.	The ratio of inferred Billing Details in relation to the total number of Billing Details in the measurement period.

5.7 Toll Declaration Metrics

5.7.1 General

Charging Metrics defined at the level of Toll Declarations generated by the Toll Service Provider assess the Charging Performance at the level of the contents of individual Toll Declarations and are only applicable for autonomous systems.

Because of the substantial difference between discrete and continuous systems as far as the nature of the potential charging errors are concerned, different metrics are defined for different types of systems. Thus, the following groups of metrics are identified:

- metrics that are applicable to all schemes including both continuous and discrete ones;
- metrics that are only applicable to discrete systems;
- metrics that are applicable to continuous systems that, as mentioned in the Introduction, may also include some discrete behaviour (e.g. price per kilometre, depending on the type of road).

The following subclauses identify metrics for each of the three defined groups.

5.7.2 Metrics relevant for all Schemes

Table 7 provides details of the metrics that have been defined for Toll Declaration that are common for both discrete and continuous Charging Schemes.

Table 7 — Common Toll Declaration Scheme Metrics

Metric ID	Metric name	Description	Definition
CM-TD-1	TD – Correct Toll Declaration Generation	Metric that measures the correctness of the generation of Toll Declarations.	The probability that a Toll Declaration is correctly generated.
CM-TD-2	TD – Incorrect Toll Declaration Generation	Metric that measures the incorrectness of the generation of Toll Declarations.	The probability that a Toll Declaration is incorrectly generated.
CM-TD-3	TD – Late Toll Declarations	Metric that measures the overall level of late Toll Declarations within a Charging Scheme, i.e. the proportion of Toll Declarations that are received later than the defined period for the delay between Chargeable Events and Toll Declarations to be received in a Charging Scheme.	The proportion of Toll Declarations received by the Toll Charger in a defined period where the time between the Chargeable Event and the receipt of the associated Toll Declaration is greater than the defined period for the Charging Scheme.
CM-TD-4	TD – TSP Event Detection	Metric that measures the ability of a TSP to correctly detect Charge-Relevant Events to avoid undercharging.	The probability that for any predefined Charge-Relevant Event that takes place the TSP properly detects it.
CM-TD-5	TD – TSP False Positive	Metric that measures the ability of TSP to avoid False Positives in Toll Declarations.	For the vehicles not using the infrastructure, it is the probability that for any defined Chargeable Event the TSP improperly detects it during the creation of Toll Declarations.

5.7.3 Metrics only applicable to discrete schemes

Table 8 provides details of the metrics that have been defined for Toll Declaration Metrics for discrete schemes.

NOTE 1 The metrics defined in 5.7.2 are also relevant for discrete schemes.

NOTE 2 The following metrics can be applied both to the systems of Toll Chargers and Toll Service Providers.

Table 8 — Discrete scheme Toll Declaration Metrics

Metric ID	Metric name	Description	Definition
CM-DTD-1	DTD – Correct Charging Rate (Correct Charge Event Recognition)	Metric that measures the correct recognition of Chargeable Events.	The probability that for any predefined Chargeable Event that is recorded the corresponding Toll Declaration is correctly generated. “Predefined” may be defined by random measurements of determined Charge Events.
CM-DTD-2	DTD – Incorrect Charge Event Recognition	Metric that measures the incorrect (Charging Data) recognition of Chargeable Events (Charging Data). This happens when a Charging Event is correctly detected, but the Toll Declaration contains incorrect data.	The probability that for any predefined Chargeable Event that is recorded, a respective Toll Declaration is incorrectly generated (the incorrect data is not detected). “Predefined” may be defined by random measurements of determined Charge Events.
CM-DTD-3	DTD – Missed Charge Event Recognition	Metric that measures the Missed Recognition of Chargeable Events. This happens when either a Chargeable Event is not detected or a Charge Report is generated but is not included in the Toll Declaration.	The probability that for any predefined Chargeable Event, an entry in the respective Toll Declaration is not generated.
CM-DTD-4	DTD – Overcharging Rate (Incorrect False Positive Charge Event Recognition)	Metric that measures the incorrect (False Positives) recognition of Chargeable Events.	For the vehicles not using the infrastructure, it is the probability that for any predefined Chargeable Event, an additional entry in the respective Toll Declaration is generated (False Positive).

5.7.4 Metrics applicable to continuous schemes

Table 9 provides details of the metrics that have been defined for Toll Declaration Metrics for continuous schemes.

NOTE The metrics defined in the 5.7.2 are also relevant for continuous schemes.

.....

Table 9 — Continuous scheme Toll Declaration Metrics

Metric ID	Metric name	Description	Definition
CM-CTD-1	CTD – Correct Charging Rate	Metric that measures the level of “Acceptable Charging” in continuous systems.	<p>The probability that for any set of <i>representative trips</i> travelled by a vehicle and during a certain period of time, the Average Relative Charging Error is within the Accepted Charging Error Interval.</p> <p>This measures the probability that the relative error in the charge computation is within acceptable limits to protect the interest of both the Toll Charger and the Service User.</p>
CM-CTD-2	CTD – Overcharging Rate	Metric that measures the level of unacceptable overcharging in continuous systems.	<p>The probability that for any single predefined <i>representative trip</i>, the Relative Charging Error is above the upper bound of the Accepted Charging Error Interval.</p> <p>This measures the probability that the relative error in the charge computation is larger than an acceptable limit. Protecting the interest of the Road User (i.e. avoiding excessive overcharging) requires that this probability be below a very small value.</p>
CM-CTD-3	CTD – Accuracy of Distance/Time Measurement	Metric that measures the accuracy of Distance/Time measurement at the Toll Declaration interface.	Average and Standard Deviation of the relative distance or time error of a set of <i>representative trips</i> travelled by a vehicle during a certain period of time.

5.8 Charge Report Metrics

5.8.1 General

Charging Metrics, defined at the level of Charge Reports generated by the Front End, assess Charging Performance at the level of the contents of individual Charge Reports for autonomous systems.

NOTE These metrics can also be used to measure the ability of the Toll Charger to correctly detect charging events in DSRC systems.

As in 5.7, metrics are defined for the three identified groups.

5.8.2 Metrics relevant for all Schemes

Table 10 provides details of the metrics that have been defined for Charge Reports that are common for both discrete and continuous Charging Schemes.

Table 10 — Common Charge Report Scheme Metrics

Metric ID	Metric name	Description	Definition
CM-CR-1	CR – Correct Charge Report Generation	Metric that measures the correctness of the generation of Charge Reports.	The probability that a Charge Report is correctly generated.
CM-CR-2	CR – Incorrect Charge Report Generation	Metric that measures the incorrectness of the generation of Charge Reports.	The probability that a Charge Report is incorrectly generated.
CM-CR-3	CR – Charge Report Latency	Metric that measures the average latency in generation of Charge Reports.	The average time it takes between a Charge Event and the time the Charge Report is created/received by the Service Provider.
CM-CR-4	CR – TSP Front End Event Detection	Metric that measures the ability of Front Ends to correctly detect Charge-Relevant Events.	The probability that the Front End properly detects any defined Charge-Relevant Event that takes place.
CM-CR-5	CR – TSP Front End False Positive	Metric that measures the ability of TSP Front Ends to avoid False Positives.	For the vehicles not using the infrastructure, it is the probability that for any predefined Chargeable Event the Front End improperly detects it.

5.8.3 Metrics only applicable to discrete schemes

Table 11 provides details of the metrics that have been defined for Charge Report Metrics for discrete schemes.

NOTE The metrics defined in 5.8.2 are also relevant for discrete schemes.

Table 11 — Discrete scheme Charge Report Metrics

Metric ID	Metric name	Description	Definition
CM-DCR-1	DCR – Correct Charging Rate (Correct Chargeable Event Recognition)	Metric that measures the correct recognition of Chargeable Events.	The probability that for any predefined <i>Chargeable Event</i> that takes place, the corresponding entry in the respective Charge Report is correctly generated. “Predefined” may be defined by random measurements of determined Chargeable Events.
CM-DCR-2	DCR – Incorrect Charge Event Recognition	Metric that measures the incorrect (Charging Data) recognition of Chargeable Events. Charging Event is correctly generated, but entry contains incorrect data.	The probability that for any predefined <i>Chargeable Event</i> that takes place, an entry in the respective Charge Report is incorrectly generated. “Predefined” may be defined by random measurements of determined Chargeable Events.
CM-DCR-3	DCR – Missed Charge Event Recognition	Metric that measures the Missed Recognition of Chargeable Events.	The probability that for any predefined <i>Chargeable Event</i> , an entry in the respective Charge Report is not generated.
CM-DCR-4	DCR – Overcharging Rate (Incorrect False Positive Charge Event Recognition)	Metric that measures the incorrect (False Positives) recognition of Chargeable Events.	For the vehicles not using the infrastructure, it is the probability that for any predefined <i>Chargeable Event</i> , an additional entry in the respective Charge Report is generated (“False Positive”).

5.8.4 Metrics applicable to continuous schemes

Table 12 provides details of the metrics that have been defined for Charge Report Metrics for continuous schemes.

NOTE The metrics defined in 5.8.2 are also relevant for continuous schemes.

Table 12 — Continuous scheme Charge Report Metrics

Metric ID	Metric name	Description	Definition
CM-CCR-1	CCR – Correct Charging Rate	Metric that measures the level of “Acceptable Charging” from the perspective of Toll Chargers in continuous systems.	<p>The probability that for any set of <i>representative trips</i> travelled by a vehicle and during a certain period of time, the Average Relative Charging Error is within the Accepted Charging Error Interval.</p> <p>This measures the probability that the relative error in the charge computation is within acceptable limits to protect the interest of both the Toll Charger and the Road User.</p>
CM-CCR-2	CCR – Overcharging Rate	Metric that measures the level of unacceptable overcharging at the User level in continuous systems.	<p>The probability that for any single predefined <i>representative trip</i>, the Relative Charging Error is above the upper bound of the Accepted Charging Error Interval.</p> <p>This measures the probability that the relative error in the charge computation is larger than an acceptable limit. Protecting the interest of the Road User (i.e. avoiding excessive overcharging) requires that this probability be below a very small value.</p>
CM-CCR-3	CCR – Accuracy of Distance/Time Measurement	Metric that measures the accuracy of Distance/Time measurement by Front Ends.	Average and Standard Deviation of the relative distance or time error of a set of <i>representative trips</i> travelled by a vehicle during a certain period of time.

Annex A (informative)

Defining Performance Requirements

A.1 General

The metrics defined in this part of ISO/TS 17444 are the basis for the establishment of Performance Requirements that will formalize the performance expectations that the system has to fulfil, either as part of the system procurement or as part of the Service Level Agreement to be established.

As stated in the Introduction, this part of ISO/TS 17444 is not intended to identify the actual performances (quantitative figures) of the system (this will be the responsibility of the procurement authority) but only to establish the way those Performance Requirements have to be established.

However, it is important to emphasize that in order for two systems to become interoperable a minimum quantitative common performance has to be agreed and established, which implies that this part of ISO/TS 17444 is not enough to assume interoperability as far as performances is concerned.

The following clauses propose a potential formulation of requirements using the metrics defined in this part of ISO/TS 17444 and the applicability of charging metrics to different types of toll schemes.

A.2 Elaboration of Performance Requirements based on Charging Metrics

Below are examples of how Performance Requirements can be elaborated based on the Charging Metrics defined in this part of ISO/TS 17444.

End-to-End Performance Requirement:

Overcharging Rate when measured End-to-End (CM-E2E-2) shall be smaller than X%, where the upper limit of the *Accepted Charging Error Interval* is Z%.

User Account Performance Requirement:

Correct charging rate when measured at the level of individual User Accounts (CM-UA-1) shall be greater than X%, where the *Accepted Charging Error Interval* is between Y% and Z%.

Toll Charger Billing Details Performance Requirement:

The correctness of the Billing Details sent by the Toll Charger based on the Toll Declarations received from the Toll Service Provider, measured by CM-BD-1, shall be greater than U%.

Toll Service Provider Toll Declaration Performance Requirement:

The correctness of the Toll Declarations sent by the Toll Service Provider (CM-TD-1) shall be greater than T%.

A.2.1 Selection of Charging Metrics for Performance Requirements

Table A.1 shows the applicability of the defined Charging Metrics for the roles of Toll Charger and Toll Service Provider for the following types of toll schemes:

- a) DSRC toll scheme — Toll Charger and one or more Toll Service Providers;
- b) Discrete Autonomous Scheme — Toll Charger with one or more Toll Service Providers;
- c) Continuous Autonomous Scheme — Toll Charger with one or more Toll Service Providers.

NOTE “Y” in a cell means the metric is applicable and empty cells mean the metric is not applicable.

Table A.1 — Applicability of Charging Metrics for Scheme Types and Roles

Metric ID	Metric Name	Toll scheme - DSRC			Toll scheme Autonomous Discrete			Toll scheme Autonomous Continuous		
		TC and SP	TC	SP	TC and SP	TC	SP	TC and SP	TC	SP
End-to-End										
CM-E2E-1	E2E Correct Charging Rate	Y			Y			Y		
CM-E2E-2	E2E Overcharging Rate	Y			Y			Y		
CM-E2E-3	E2E Undercharging Rate	Y			Y			Y		
CM-E2E-4	E2E Late Charging Rate	Y			Y			Y		
User Account										
CM-UA-1	UA – Correct Charging Rate			Y			Y			Y
CM-UA-2	UA – Overcharging Rate			Y			Y			Y
CM-UA-3	UA – Undercharging Rate			Y			Y			Y
CM-UA-4	UA – Accurate application of Payments and Refunds			Y			Y			Y
CM-UA-5	UA – Accurate Personalization of OBU's			Y			Y			Y
Payment Claims										
CM-PC-1	PC – Correct Charging Rate		Y			Y			Y	
CM-PC-2	PC – Overcharging Rate		Y			Y			Y	
CM-PC-3	PC – Undercharging Rate		Y			Y			Y	
CM-PC-4	PC – Latency – TC		Y			Y			Y	
CM-PC-5	PC – Late Payment Claims		Y			Y			Y	
CM-PC-5	PC – Rejected Payment Claim Rate		Y			Y			Y	
Billing Details										
CM-BD-1	BD – Correct Charging Rate		Y			Y			Y	
CM-BD-2	BD – Overcharging Rate		Y			Y			Y	
CM-BD-3	BD – Undercharging Rate		Y			Y			Y	
CM-BD-4	BD – Incorrect Charging Rate		Y			Y			Y	
CM-BD-5	BD – Latency – TC		Y			Y			Y	
CM-BD-6	BD – Late Billing Details		Y			Y			Y	
CM-BD-7	BD – Rejected Billing Details Rate		Y			Y			Y	
CM-BD-8	BD – Incorrect rejected Billing Details Rate			Y			Y			Y
CM-BD-9	BD – Inferred Billing Details Rate		Y			Y			Y	
Toll Declaration										
CM-TD-1	TD – Correct Toll Declaration Generation		Y				Y			Y
CM-TD-2	TD – Incorrect Toll Declaration Generation		Y				Y			Y
CM-TD-3	TD – Late Toll Declarations		Y				Y			Y
CM-TD-4	TD – TSP Event Detection		Y				Y			Y
CM-TD-5	TD – TSP False Positive		Y				Y			Y
CM-DTD-1	DTD – Correct Charging Rate (Chargeable Events)		Y				Y			
CM-DTD-2	DTD – Incorrect Charge Event Recognition		Y				Y			

Table A.1 (continued)

Metric ID	Metric Name	Toll scheme - DSRC			Toll scheme Autonomous Discrete			Toll scheme Autonomous Continuous		
		TC and SP	TC	SP	TC and SP	TC	SP	TC and SP	TC	SP
CM-DTD-3	DTD – Missed Charge Event Recognition		Y				Y			
CM-DTD-4	DTD Overcharging Rate (Incorrect False Positive Charge Event Recognition)		Y				Y			
CM-CTD-1	CTD Correct Charging Rate									Y
CM-CTD-2	CTD Overcharging Rate									Y
CM-CTD-3	CTD Accuracy of Distance/Time Measurement									Y
Charge Report										
CM-CR-1	CR – Correct Charge Report Generation						Y			Y
CM-CR-2	CR – Incorrect Charge Report Generation						Y			Y
CM-CR-3	CR – Charge Report Latency						Y			Y
CM-CR-4	CR – TSP Front End Event Detection						Y			Y
CM-CR-5	CR – TSP Front End False Positive						Y			Y
CM-DCR-1	DCR – Correct Charging Rate (Chargeable Events)						Y			
CM-DCR-2	DCR – Incorrect Charge Event recognition						Y			
CM-DCR-3	DCR – Missed Charge Event Recognition						Y			
CM-DCR-4	DCR – Overcharging Rate (Incorrect False Positive Charge Event Recognition)						Y			
CM-CCR-1	CTD – Correct Charging Rate									Y
CM-CCR-2	CTD – Overcharging Rate									Y
CM-CCR-3	CTD – Accuracy of Distance/Time Measurement									Y

Bibliography

- [1] DIRECTIVE 2004/52/EC on the interoperability of electronic road toll systems in the Community, 29 April 2004
- [2] 2009/750/EC Commission Decision 6th October 2009 on the definition of the European Electronic Toll Service and its technical elements
- [3] European Commission Guide for the application of the Directive on the interoperability of electronic road toll systems (EC - DG for mobility and transport, ISBN 978-92-79-18637-0, 2011-06-16)
- [4] ISO/TS 12813, *Electronic fee collection — Compliance check communication for autonomous systems*
- [5] ISO/TS 13141, *Electronic fee collection — Localisation augmentation communication for autonomous systems*
- [6] ISO/TS 17575-2, *Electronic fee collection — Application interface definition for autonomous systems — Part 2: Communication and connection to the lower layers*
- [7] ISO/TS 17575-3, *Electronic fee collection — Application interface definition for autonomous systems — Part 3: Context Data*
- [8] ISO/TS 17575-4, *Electronic fee collection — Application interface definition for autonomous systems — Part 4: Roaming*
- [9] ISO/IEC 20000-1, *Information technology — Service management — Part 1: Service management system requirements*
- [10] CEN/TS 16331, *Electronic fee collection — Interoperable application profile for autonomous systems*

Copyright International Organization for Standardization

infocentre@iso.org

ICS 03.220.20; 35.240.60

Price based on 24 pages