

# INTERNATIONAL STANDARD

# ISO 13351

Second edition  
2009-11-15

---

---

## Fans — Dimensions

*Ventilateurs — Dimensions*

ISO 13351:2009(E)



Reference number  
ISO 13351:2009(E)

© ISO 2009

**PDF disclaimer**

This PDF file may contain embedded typefaces. In accordance with Adobe's licensing policy, this file may be printed or viewed but shall not be edited unless the typefaces which are embedded are licensed to and installed on the computer performing the editing. In downloading this file, parties accept therein the responsibility of not infringing Adobe's licensing policy. The ISO Central Secretariat accepts no liability in this area.

Adobe is a trademark of Adobe Systems Incorporated.

Details of the software products used to create this PDF file can be found in the General Info relative to the file; the PDF-creation parameters were optimized for printing. Every care has been taken to ensure that the file is suitable for use by ISO member bodies. In the unlikely event that a problem relating to it is found, please inform the Central Secretariat at the address given below.



**COPYRIGHT PROTECTED DOCUMENT**

© ISO 2009

All rights reserved. Unless otherwise specified, no part of this publication may be reproduced or utilized in any form or by any means, electronic or mechanical, including photocopying and microfilm, without permission in writing from either ISO at the address below or ISO's member body in the country of the requester.

ISO copyright office  
Case postale 56 • CH-1211 Geneva 20  
Tel. + 41 22 749 01 11  
Fax + 41 22 749 09 47  
E-mail [copyright@iso.org](mailto:copyright@iso.org)  
Web [www.iso.org](http://www.iso.org)

Published in Switzerland

# Contents

Page

Foreword.....	iv
Introduction .....	v
1 Scope .....	1
2 Normative references .....	1
3 Terms, definitions and symbols .....	1
4 Requirements .....	3
4.1 General .....	3
4.2 Circular flanges .....	4
4.3 Rectangular flanges .....	7
4.4 Designation of fan size .....	12
Bibliography .....	13

## Foreword

ISO (the International Organization for Standardization) is a worldwide federation of national standards bodies (ISO member bodies). The work of preparing International Standards is normally carried out through ISO technical committees. Each member body interested in a subject for which a technical committee has been established has the right to be represented on that committee. International organizations, governmental and non-governmental, in liaison with ISO, also take part in the work. ISO collaborates closely with the International Electrotechnical Commission (IEC) on all matters of electrotechnical standardization.

International Standards are drafted in accordance with the rules given in the ISO/IEC Directives, Part 2.

The main task of technical committees is to prepare International Standards. Draft International Standards adopted by the technical committees are circulated to the member bodies for voting. Publication as an International Standard requires approval by at least 75 % of the member bodies casting a vote.

Attention is drawn to the possibility that some of the elements of this document may be the subject of patent rights. ISO shall not be held responsible for identifying any or all such patent rights.

ISO 13351 was prepared by Technical Committee ISO/TC 117, *Fans*.

This second edition cancels and replaces the first edition (ISO 13351:1996), of which it constitutes a minor revision. It also incorporates the content of ISO 6580:2005, which will be withdrawn following its publication.

## Introduction

This International Standard gives dimensional details of circular and rectangular flanges of fans in addition to specifying the fan size designation. For circular flanges, the values specified in ISO 6580 have been retained for light-duty fans, in parallel with those values given in Tables 3 and 4 for medium- and heavy-duty fans.

While it does not constrain the manufacturer's choice of flange details, this International Standard facilitates interchangeability, thereby helping to reduce technical barriers to trade.

Throughout this International Standard, the principal dimensions are based on the rounded values of preferred numbers given in ISO 497.

Copyright International Organization for Standardization

# Fans — Dimensions

## 1 Scope

This International Standard specifies the dimensions of the circular and rectangular flanges of general-purpose fans, as well as the fan size designations. It is not applicable to cross-flow fans or to fan appliances used for individual household or similar applications.

For circular flanges, it provides for three different flange series: one for light-duty casing thicknesses, another for medium-duty fans and the third for heavy-duty fans as used on sea-going vessels or in heavy industry.

In order not to restrict fan design unduly, only the pitch diameter, hole numbers and hole diameters are specified. Flange thickness, as well as internal and external flange diameters, may be chosen freely within the limits of good engineering practice.

## 2 Normative references

The following referenced documents are indispensable for the application of this document. For dated references, only the edition cited applies. For undated references, the latest edition of the referenced document (including any amendments) applies.

ISO 3, *Preferred numbers — Series of preferred numbers*

ISO 13349, *Industrial fans — Vocabulary and definitions of categories*

## 3 Terms, definitions and symbols

For the purposes of this document, the terms and definitions given in ISO 13349 and the following terms, definitions and symbols apply.

### 3.1

#### **light-duty fan**

fan suitable for air that is non-toxic, not saturated, non-corrosive, non-flammable, free from abrasive particles, and not exceeding a temperature of 80 °C, or 40 °C if the motor or the fan bearings are in the air stream, and for pressures up to 2 kPa

NOTE See Table 1.

### 3.2

#### **medium-duty fan**

fan with flange dimensions as specified in Figure 4 and Table 2 and suitable for pressures up to 10 kPa

### 3.3

#### **heavy-duty fan**

fan with larger flange dimensions as specified in Figure 4 and Table 3 and suitable for pressures up to 40 kPa

**3.4  
nominal impeller tip diameter**

$D$   
diameter of the impeller tip on which the design of the fan is based

NOTE See Figures 1 to 3.

$D$  nominal impeller tip diameter, in millimetres (see Figures 1 to 3)

$D_R$  actual impeller tip diameter, in millimetres (see Figures 1 to 3)

$d_1$  pitch circle diameter, in millimetres

$d_2$  hole diameter, in millimetres

$d_3$  bolt diameter, in millimetres

$d_4$  washer diameter, in millimetres

$e$  casing thickness, in millimetres

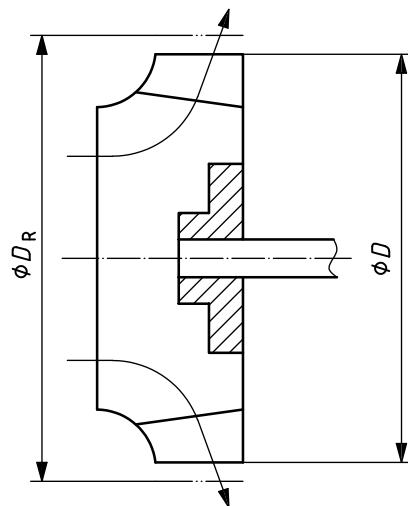
$g$  hole offset, in millimetres

$l$  arc length between bolt holes, in millimetres

$N$  number of holes

$P$  pitch

$\alpha$  angle between bolt holes, in degrees



**Figure 1 — Impeller — Centrifugal fan**



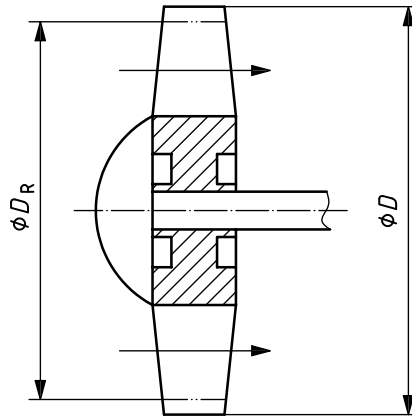
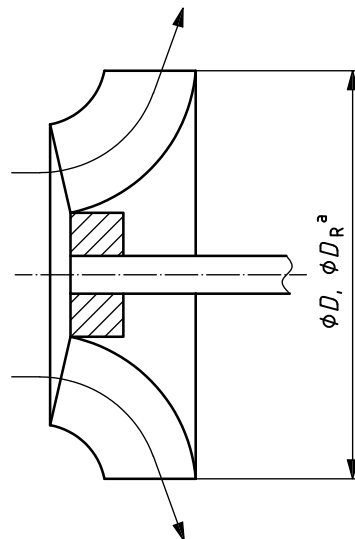


Figure 2 — Impeller — Axial-flow fan



<sup>a</sup> Usually,  $D = D_R$

Figure 3 — Impeller — Mixed-flow fan

## 4 Requirements

### 4.1 General

This International Standard adopts the Renard R 20 series according to ISO 497 as the nominal dimensions for impeller tip diameters, the inside diameters of circular flanges and the inside lengths of the sides of rectangular flanges. It takes into account the maximum casing thicknesses likely to be used for general-purpose fans, as well as typical manufacturing tolerances representative of engineering “good practice”.

The smallest practical pitch circle diameter can be related to the inside diameter of the casing, the casing thickness, the size of the weld fillet or bend radius at the junction of the flange and the casing, and the normal washer diameter. Light-duty circular flanges might not be suitable for the use of open-ended spanners in all cases.

This International Standard accepts that the number and diameter of bolts or screws cannot be established on a theoretical basis. Practical experience of satisfactory service, optimum cost of installation and manufacture, as well as dimensional tolerances of production are the most important considerations.

The dimensions of circular and rectangular flanges are given in sizes corresponding to nominal diameters from 100 mm to 2 000 mm. In the smaller sizes (below about 200 mm) flange details may be determined by the customer's specification. However, where this is not the case, then the specifications of this International Standard are to be applied.

### 4.2 Circular flanges

The number of flange holes is divisible by four to permit the orientation of cylindrical cased fans at positions of 90°. The holes are disposed equally on each side of the centrelines of the fan. This permits a flange to be divided in half if a split casing is required. It also allows better access to the fixings on the remote side of a fan in a confined installation.

When an intermediate fan size is required, the R 40 series in accordance with ISO 3 shall be used to obtain the nominal inside diameter. The flange details shall be interpreted from the next larger R 20 size.

In exceptional circumstances, when even smaller increments of fan size are required, it is recommended that the R 80 series be used.

See Figure 4.

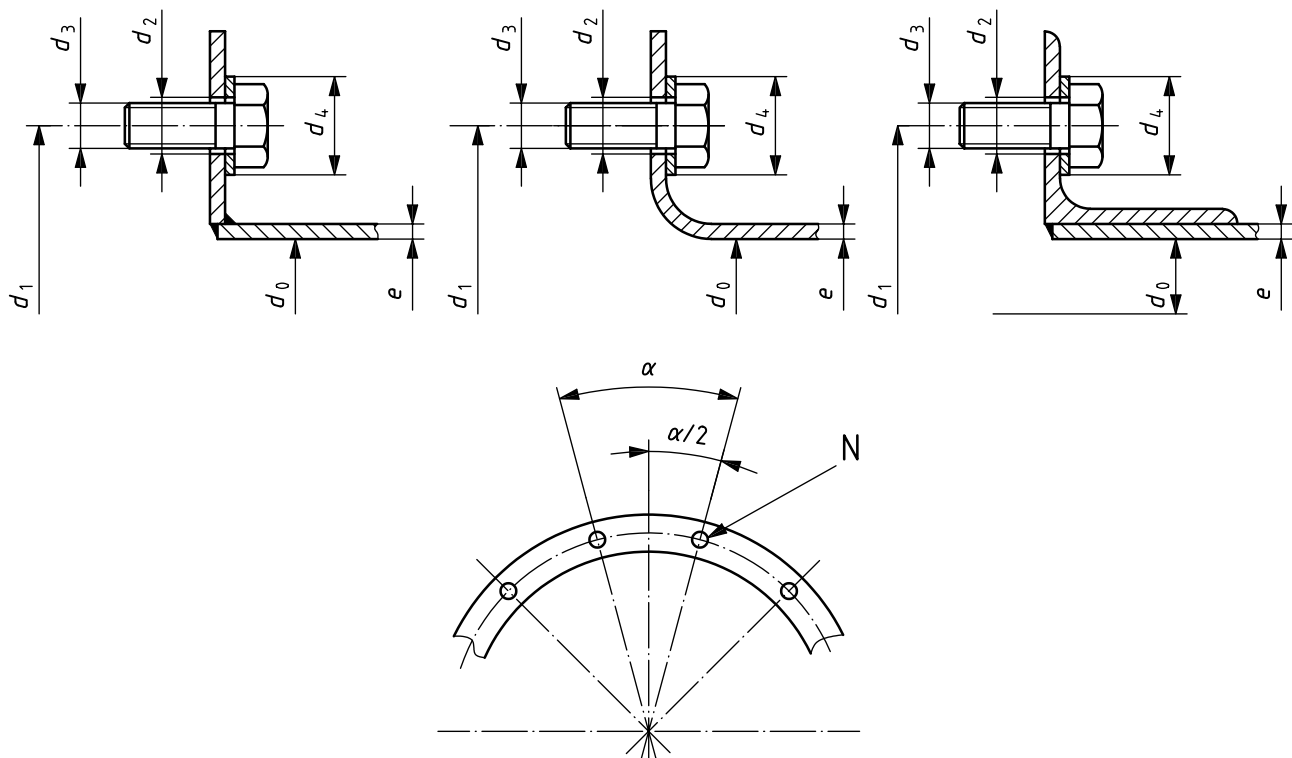


Figure 4 — Dimensions — Circular flanges

Table 1 — Dimensions — Circular flanges — Light-duty fans

Dimensions in millimetres

$d_0$	$d_1$	$\frac{d_1 - d_0}{2}$	$N$	$\alpha$	$d_2$	$d_3$	$d_4$	$e_{\max.}$
100	120	10	4	90	7	M6	12,5	1,6
112	137	12,5	4	90	7	M6	12,5	2
125	150	12,5	4	90	7	M6	12,5	2
140	165	12,5	4	90	7	M6	12,5	2
160	185	12,5	4	90	7	M6	12,5	2
180	205	12,5	4	90	7	M6	12,5	2
200	225	12,5	4	90	7	M6	12,5	2
224	254	15	4	90	7	M6	12,5	2
250	280	15	4	90	10	M8	17	2,5
280	320	20	4	90	10	M8	17	2,5
315	355	20	8	45	10	M8	17	3
355	395	20	8	45	10	M8	17	3
400	450	25	8	45	12	M10	21	3
450	500	25	8	45	12	M10	21	3
500	560	30	12	30	12	M10	21	3,5
560	620	30	12	30	12	M10	21	3,5
630	690	30	12	30	12	M10	21	5
710	770	30	16	22,5	12	M10	21	5
800	860	30	16	22,5	12	M10	21	5
900	970	35	16	22,5	15	M12	24	6
1 000	1 070	35	16	22,5	15	M12	24	6
1 120	1 190	35	20	18	15	M12	24	6
1 250	1 320	35	20	18	15	M12	24	6
1 400	1 470	35	20	18	15	M12	24	6
1 600	1 680	40	24	15	19	M16	30	8
1 800	1 880	40	24	15	19	M16	30	8
2 000	2 080	40	24	15	19	M16	30	8

Table 2 — Dimensions — Circular flanges — Medium-duty fans

Dimensions in millimetres

$D$	$d_1$	$\frac{d_1 - D}{2}$	$N$	$\alpha$	$l$	$d_2$	$d_3$	$d_4^a$	$e^a$
100	139	19,5	4	90	109	9,5	M8	17	$1,5 \leq e \leq 6$
112	151	19,5	4	90	119	9,5	M8	17	$1,5 \leq e \leq 6$
125	165	20	4	90	130	9,5	M8	17	$1,5 \leq e \leq 6$
140	182	21	8	45	71	11,5	M10	21	$1,5 \leq e \leq 6$
160	200	20	8	45	79	11,5	M10	21	$1,5 \leq e \leq 6$
180	219	19,5	8	45	86	11,5	M10	21	$1,5 \leq e \leq 6$
200	241	20,5	8	45	95	11,5	M10	21	$1,5 \leq e \leq 6$
224	265	20,5	8	45	104	11,5	M10	21	$1,5 \leq e \leq 6$
250	292	21	8	45	115	11,5	M10	21	$1,5 \leq e \leq 6$
280	332	26	8	45	130	11,5	M10	21	$1,5 \leq e \leq 6$
315	366	25,5	8	45	144	11,5	M10	21	$1,5 \leq e \leq 6$
355	405	25	8	45	159	11,5	M10	21	$1,5 \leq e \leq 6$
400	448	24	12	30	117	11,5	M10	21	$1,5 \leq e \leq 6$
450	497	23,5	12	30	130	11,5	M10	21	$1,5 \leq e \leq 6$
500	551	25,5	12	30	144	11,5	M10	21	$1,5 \leq e \leq 6$
560	629	34,5	16	22,5	124	14	M12	24	$2 \leq e \leq 6$
630	698	34	16	22,5	137	14	M12	24	$2 \leq e \leq 6$
710	775	32,5	16	22,5	152	14	M12	24	$2,5 \leq e \leq 6$
800	869	34,5	24	15	113	14	M12	24	$2,5 \leq e \leq 6$
900	958	29	24	15	125	14	M12	24	$3 \leq e \leq 6$
1 000	1 067	33,5	24	15	140	14	M12	24	$3 \leq e \leq 6$
1 120	1 200	40	32	11,25	118	18	M16	30	$4 \leq e \leq 6$
1 250	1 337	43,5	32	11,25	131	18	M16	30	$4 \leq e \leq 6$
1 400	1 475	37,5	32	11,25	145	18	M16	30	$5 \leq e \leq 6$
1 600	1 675	37,5	40	9	132	18	M16	30	$5 \leq e \leq 6$
1 800	1 875	37,5	40	9	147	18	M16	30	6
2 000	2 073	36,5	40	9	163	18	M16	30	6

<sup>a</sup> Given for information.

Table 3 — Dimensions — Circular flanges — Heavy-duty fans

Dimensions in millimetres

$D$	$d_1$	$\frac{d_1 - D}{2}$	$N$	$\alpha$	$l$	$d_2$	$d_3$	$d_4^a$	$e^a$
250	325	37,5	12	30	85	14,5	M12	24	8 ≤ e ≤ 10
280	355	37,5	12	30	93	14,5	M12	24	
315	390	37,5	12	30	102	14,5	M12	24	
355	430	37,5	16	22,5	84	14,5	M12	24	
400	475	37,5	16	22,5	93	14,5	M12	24	
450	525	37,5	20	18	82	14,5	M12	24	
500	575	37,5	20	18	90	14,5	M12	24	
560	650	45	20	18	102	18,5	M16	30	
630	720	45	20	18	113	18,5	M16	30	
710	800	45	20	18	126	18,5	M16	30	
800	890	45	24	15	116	18,5	M16	30	
900	990	45	24	15	130	18,5	M16	30	
1 000	1 090	55	28	12,85	122	18,5	M16	30	
1 120	1 230	55	28	12,85	138	24	M20	37	
1 250	1 360	55	28	12,85	153	24	M20	37	
1 400	1 510	55	32	11,25	148	24	M20	37	
1 600	1 710	55	36	10	149	24	M20	37	
1 800	1 910	55	40	9	150	24	M20	37	

<sup>a</sup> Given for information.

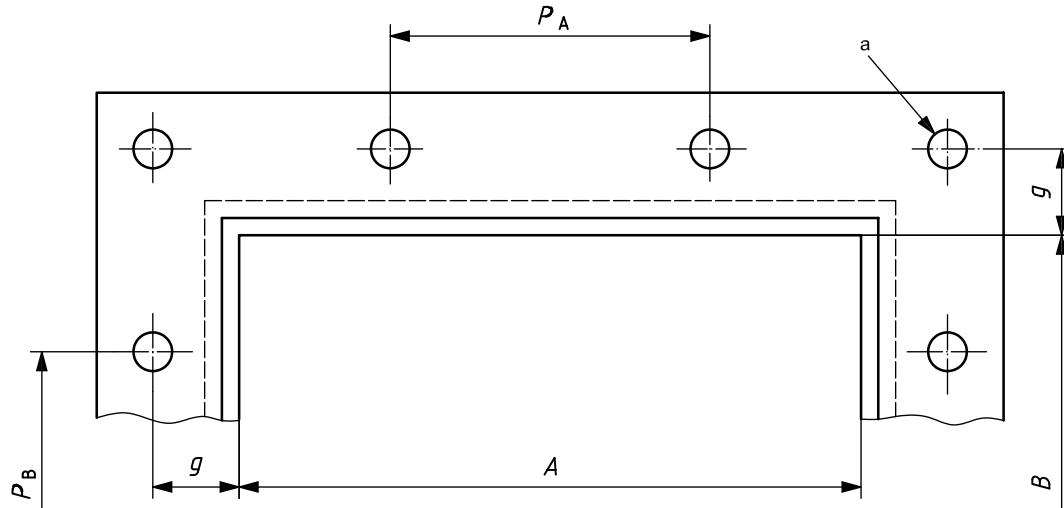
### 4.3 Rectangular flanges

The objective of the system is to provide the maximum freedom of choice for rectangular dimensions, using standardized flange dimensions and standardized locations and sizes of bolt holes, throughout the range of fan outlet sizes. The system is applied by selecting standard bolt hole locations from Table 4 for each of the two dimensions of the fan outlet.

Tables 5 and 6 specify a series of rectangular outlets based on the R 20 series for two alternative methods of determining aspect ratio.

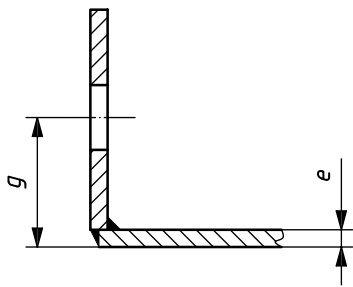
No recommendations are given for the size of angle to be used in the lap-welded design, the choice being determined by the hole offset,  $g$ , and the ability to apply a tightening spanner to the nut and bolt specified. For certain aspect ratios other than 1, there are selections where unequal flanges could result from the system (see also explanatory text to Figure 5). If unequal flanges are undesirable, then equal flange dimensions and bolt sizes may be selected to correspond with the dimensions for the longer of the two sides, but retaining the pitch between the bolt holes so that it corresponds to each outlet side dimension. The hole offset must remain unaltered if the dimensional integrity of the hole positions are to be maintained.

See Figure 5.

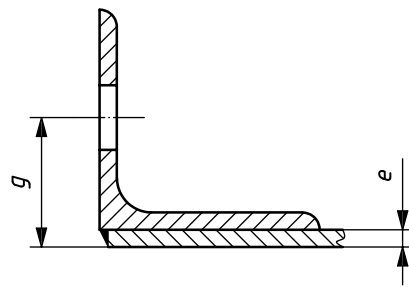


Lap-weld design

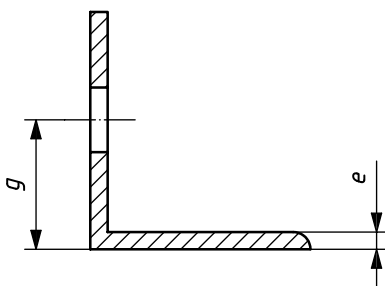
**a) Hole locations**



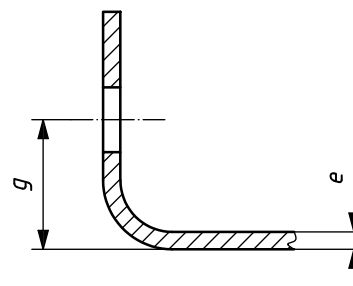
Fabricated flange design



Lap-weld design



Butt flange design



Rolled flange design

**b) Alternative mounting designs**

For certain aspect ratios other than 1, there are selections where unequal-sized holes would result from the system. If unequal-sized holes are undesirable, then equal hole and bolt sizes may be selected to correspond with the dimensions of the longer of the two sides, while retaining the pitch between the bolt so that it corresponds to each outlet side dimension.

<sup>a</sup> Optional corner holes: position is defined by hole offset, *g*.

**Figure 5 — Dimensions — Rectangular flanges**

Table 4 — Dimensions — Rectangular flanges

Dimensions in millimetres

Fan outlet Inside casing A or B	Pitch $P_A$ or $P_B$	No. of holes per side $N$		$d_3$	$d_2$	$g$	$e_{\max.}^a$
		With corner holes	Without corner holes				
100	71	4	2	M6	7	19	2
112	71	4	2	M6	7	19	2
125	71	4	2	M6	7	19	2
140	71	4	2	M6	7	19	2
160	100	4	2	M6	7	19	2
180	100	4	2	M6	7	19	2
200	100	4	2	M6	7	19	2
224	100	4	2	M6	7	19	2
250	125	4	2	M8	10	19	3
280	125	4	2	M8	10	19	3
315	125	5	3	M8	10	19	3
355	125	5	3	M8	10	19	3
400	125	5	3	M8	10	19	3
450	125	6	4	M10	12	32	5
500	125	6	4	M10	12	32	5
560	125	7	5	M10	12	32	5
630	125	7	5	M10	12	32	5
710	125	8	6	M10	12	32	5
800	125	9	7	M10	12	32	5
900	125	9	7	M10	12	32	5
1 000	125	10	8	M12	14	32	5
1 120	125	11	9	M12	14	37	5
1 250	125	12	10	M12	14	37	5
1 400	125	12	10	M12	14	37	5
1 600	125	13	11	M12	14	37	5
1 800	125	15	13	M12	14	37	5
2 000	125	16	14	M12	14	37	5

<sup>a</sup> Given for information.

Table 5 — Series of rectangular outlets based on R 20 series — Aspect ratios,  $k_p$

		Short side, mm																		
		100	112	125	140	160	180	200	224	250	280	315	355	400 <sup>a</sup>						
		$k_p$																		
Long side mm	100	1																		
	112	0,9	1																	
	125	0,8	0,9	1																
	140	0,71	0,8	0,9	1															
	160	0,63	0,71	0,8	0,9	1														
	180	0,56	0,63	0,71	0,8	0,9	1													
	200	0,5	0,56	0,63	0,71	0,8	0,9	1												
	224	0,45	0,5	0,56	0,63	0,71	0,8	0,9	1											
	250	0,4	0,45	0,5	0,56	0,63	0,71	0,8	0,9	1										
	280		0,4	0,45	0,5	0,56	0,63	0,71	0,8	0,9	1									
	315			0,4	0,45	0,5	0,56	0,63	0,71	0,8	0,9	1								
	355				0,4	0,45	0,5	0,56	0,63	0,71	0,8	0,9	1							
	400					0,4	0,45	0,5	0,56	0,63	0,71	0,8	0,9	1						
	450	1					0,4	0,45	0,5	0,56	0,63	0,71	0,8	0,9						
	500	0,9	1					0,4	0,45	0,5	0,56	0,63	0,71	0,8						
	560	0,8	0,9	1					0,4	0,45	0,5	0,56	0,63	0,71						
	630	0,71	0,8	0,9	1					0,4	0,45	0,5	0,56	0,63						
	710	0,63	0,71	0,8	0,9	1					0,4	0,45	0,5	0,56						
	800	0,56	0,63	0,71	0,8	0,9	1					0,4	0,45	0,5						
	900	0,5	0,56	0,63	0,71	0,8	0,9	1					0,4	0,45						
1 000	0,45	0,5	0,56	0,63	0,71	0,8	0,9	1					0,4							
1 120	0,4	0,45	0,5	0,56	0,63	0,71	0,8	0,9	1											
1 250		0,4	0,45	0,5	0,56	0,63	0,71	0,8	0,9	1										
1 400			0,4	0,45	0,5	0,56	0,63	0,71	0,8	0,9	1									
1 600				0,4	0,45	0,5	0,56	0,63	0,71	0,8	0,9	1								
1 800					0,4	0,45	0,5	0,56	0,63	0,71	0,8	0,9	1							
		$k_p$																		
		450 <sup>b</sup>	500	560	620	710	800	900	1 000	1 120	1 250	1 400	1 600	1 800						
		Short side, mm																		
$k_p = \frac{\text{Short side}}{\text{Long side}}$		Approximations are based on the usual “rounded” sizes.																		
<sup>a</sup> Continued on bottom line, “Short side”.																				
<sup>b</sup> Continued from top line, “Short side”.																				



Table 6 — Series of rectangular outlets based on R 20 series — Aspect ratios,  $k_g$

		Short side, mm																		
		100	112	125	140	160	180	200	224	250	280	315	355	400 <sup>a</sup>						
		$k_g$																		
Long side mm	100	1																		
	112	1,12	1																	
	125	1,25	1,12	1																
	140	1,4	1,25	1,12	1															
	160	1,6	1,4	1,25	1,12	1														
	180	1,8	1,6	1,4	1,25	1,12	1													
	200	2	1,8	1,6	1,4	1,25	1,12	1												
	224	2,24	2	1,8	1,6	1,4	1,25	1,12	1											
	250	2,5	2,24	2	1,8	1,6	1,4	1,25	1,12	1										
	280		2,5	2,24	2	1,8	1,6	1,4	1,25	1,12	1									
	315			2,5	2,24	2	1,8	1,6	1,4	1,25	1,12	1								
	355				2,5	2,24	2	1,8	1,6	1,4	1,25	1,12	1							
	400					2,5	2,24	2	1,8	1,6	1,4	1,25	1,12	1						
	450	1					2,5	2,24	2	1,8	1,6	1,4	1,25	1,12	1					
	500	1,12	1					2,5	2,24	2	1,8	1,6	1,4	1,25						
	560	1,25	1,12	1					2,5	2,24	2	1,8	1,6	1,4						
	630	1,4	1,25	1,12	1					2,5	2,24	2	1,8	1,6						
	710	1,6	1,4	1,25	1,12	1					2,5	2,24	2	1,8						
	800	1,8	1,6	1,4	1,25	1,12	1					2,5	2,24	2						
	900	2	1,8	1,6	1,4	1,25	1,12	1					2,5	2,24	2					
1 000	2,24	2	1,8	1,6	1,4	1,25	1,12	1					2,5	2,24	2					
1 120	2,5	2,24	2	1,8	1,6	1,4	1,25	1,12	1					2,5	2,24	2				
1 250		2,5	2,24	2	1,8	1,6	1,4	1,25	1,12	1					2,5	2,24	2			
1 400			2,5	2,24	2	1,8	1,6	1,4	1,25	1,12	1					2,5	2,24	2		
1 600				2,5	2,24	2	1,8	1,6	1,4	1,25	1,12	1					2,5	2,24	2	
1 800					2,5	2,24	2	1,8	1,6	1,4	1,25	1,12	1					2,5	2,24	
		$k_g$																		
		450 <sup>b</sup>	500	560	630	710	800	900	1 000	1 120	1 250	1 400	1 600	1 800						
		Short side, mm																		
$k_g = \frac{\text{Long side}}{\text{Short side}}$		Approximations are based on the usual "rounded" sizes.																		
<sup>a</sup>		Continued on bottom line, "Short side".																		
<sup>b</sup>		Continued from top line, "Short side".																		

#### 4.4 Designation of fan size

Fan size shall be designated by the nominal impeller tip diameter (see Figures 1 to 3).

This International Standard uses the R 20 series in accordance with ISO 3 for the fan size designation (nominal impeller tip diameter,  $D$ ), in the range 100 mm to 2 000 mm, as presented in Table 7.

For impeller tip diameters greater than 2 000 mm, the numbers may be selected from either the R 20, R 40 or exceptional R 80 series.

**Table 7 — Fan sizes**

Nominal impeller tip diameter $D$ mm		
100 <sup>a</sup>	280	800 <sup>a</sup>
112	315 <sup>a</sup>	900
125 <sup>a</sup>	355	1 000 <sup>a</sup>
140	400 <sup>a</sup>	1 120
160 <sup>a</sup>	450	1 250 <sup>a</sup>
180	500 <sup>a</sup>	1 400
200 <sup>a</sup>	560	1 600 <sup>a</sup>
224	630 <sup>a</sup>	1 800
250 <sup>a</sup>	710	2 000 <sup>a</sup>
<sup>a</sup> R 10 series numbers.		

## Bibliography

- [1] ISO 17, *Guide to the use of preferred numbers and of series of preferred numbers*
- [2] ISO 497, *Guide to the choice of preferred numbers and of series containing more rounded values of preferred numbers*
- [3] ISO 6580:2005, *General-purpose industrial fans — Circular flanges — Dimensions*

---

---

**ICS 23.120**

Price based on 13 pages