

---

---

**Electronic data interchange between  
information systems in agriculture —  
Agricultural data element dictionary —**

**Part 2:  
Dairy farming**

*Échange de données informatisé entre systèmes d'information en  
agriculture — Dictionnaire de données agricoles —*

*Partie 2: Exploitation laitière*



Reference number  
ISO 11788-2:2000(E)

© ISO 2000

**PDF disclaimer**

This PDF file may contain embedded typefaces. In accordance with Adobe's licensing policy, this file may be printed or viewed but shall not be edited unless the typefaces which are embedded are licensed to and installed on the computer performing the editing. In downloading this file, parties accept therein the responsibility of not infringing Adobe's licensing policy. The ISO Central Secretariat accepts no liability in this area.

Adobe is a trademark of Adobe Systems Incorporated.

Details of the software products used to create this PDF file can be found in the General Info relative to the file; the PDF-creation parameters were optimized for printing. Every care has been taken to ensure that the file is suitable for use by ISO member bodies. In the unlikely event that a problem relating to it is found, please inform the Central Secretariat at the address given below.

© ISO 2000

All rights reserved. Unless otherwise specified, no part of this publication may be reproduced or utilized in any form or by any means, electronic or mechanical, including photocopying and microfilm, without permission in writing from either ISO at the address below or ISO's member body in the country of the requester.

ISO copyright office  
Case postale 56 • CH-1211 Geneva 20  
Tel. + 41 22 749 01 11  
Fax + 41 22 734 10 79  
E-mail [copyright@iso.ch](mailto:copyright@iso.ch)  
Web [www.iso.ch](http://www.iso.ch)

Printed in Switzerland

## Foreword

ISO (the International Organization for Standardization) is a worldwide federation of national standards bodies (ISO member bodies). The work of preparing International Standards is normally carried out through ISO technical committees. Each member body interested in a subject for which a technical committee has been established has the right to be represented on that committee. International organizations, governmental and non-governmental, in liaison with ISO, also take part in the work. ISO collaborates closely with the International Electrotechnical Commission (IEC) on all matters of electrotechnical standardization.

International Standards are drafted in accordance with the rules given in the ISO/IEC Directives, Part 3.

Draft International Standards adopted by the technical committees are circulated to the member bodies for voting. Publication as an International Standard requires approval by at least 75 % of the member bodies casting a vote.

Attention is drawn to the possibility that some of the elements of this part of ISO/IEC 11788 may be the subject of patent rights. ISO and IEC shall not be held responsible for identifying any or all such patent rights.

International Standard ISO 11788-2 was prepared by Technical Committee ISO/TC 23, *Tractors and machinery for agriculture and forestry*, Subcommittee SC 19, *Agricultural electronics*.

ISO 11788 consists of the following parts, under the general title *Electronic data interchange between information systems in agriculture — Agricultural data element dictionary*:

- *Part 1: General description*
- *Part 2: Dairy farming*
- *Part 3: Pig farming*
- *Part 4: Poultry farming*
- *Part 5: Non-animal stationary application*

Annexes A and B form a normative part of this part of ISO 11788.

## Introduction

Stand-alone computers on farms require that the same data be manually entered into and collected from the different computers. This is a laborious task which becomes superfluous when the computers are interconnected and able to communicate with each other automatically to share and exchange information. Information exchange means data transport between the management computer on one side and each process computer on the other side.

An agricultural data element dictionary (ADED) consists of data elements that may be used in the agricultural sector to exchange data electronically. ADED is closely linked to agricultural data interchange syntax (ADIS). It is a syntax that may be used in the agricultural sector to exchange data electronically. ADED in combination with ADIS makes electronic data interchange possible.

In a data element dictionary all data elements are described in a unique way. Each element is uniquely identified by a data dictionary number (DD number). Data dictionaries for data exchange between management computers and process computers may be subsets of larger data dictionaries.

The standardization of on-farm data interchange between management computer and stationary process computers consists of an interchange syntax, ADIS, and an agricultural data element dictionary, ADED. The ADIS syntax is described in ISO 11787:1995, *Machinery for agriculture and forestry — Data interchange between management computer and process computers — Data interchange syntax*. A general description of ADED is given in ISO 11788-1; the other parts of ISO 11788 describe data dictionaries for different fields of application.

This part of ISO 11788 describes the agricultural data dictionary elements in the field of dairy farming.

# Electronic data interchange between information systems in agriculture — Agricultural data element dictionary —

## Part 2: Dairy farming

### 1 Scope

This part of ISO 11788 specifies how the agricultural data element dictionary (ADED) can be used in on-farm data exchange between management systems and stationary computers in dairy farming. Stationary computers in dairy farming are for example feeding computers, milk yield registrators and animal weighing computers.

This part of ISO 11788 describes the data elements and entities in the field of dairy farming in accordance with the rules given in ISO 11788-1.

### 2 Normative references

The following normative documents contain provisions which, through reference in this text, constitute provisions of this part of ISO 11788. For dated references, subsequent amendments to, or revisions of, any of these publications do not apply. However, parties to agreements based on this part of ISO 11788 are encouraged to investigate the possibility of applying the most recent editions of the normative documents indicated below. For undated references, the latest edition of the normative document referred to applies. Members of ISO and IEC maintain registers of currently valid International Standards.

ISO 11784:1996, *Radio frequency identification of animals — Code structure*.

ISO 11788-1:1997, *Electronic data interchange between information systems in agriculture — Agricultural data element dictionary — Part 1: General description*.

### 3 Terms and definitions

For the purposes of this part of ISO 11788, the terms and definitions given in ISO 11788-1 and the following apply.

#### 3.1

##### entity relationship diagram

visual presentation of the possible relationships between entities

### 4 Abbreviations

ADED: Agricultural Data Element Dictionary

ADIS: Agricultural Data Interchange Syntax

AN: Alphanumeric

- C: Conditional
- DD: Data Dictionary
- EDI: Electronic Data Interchange
- ERD: Entity Relationship Diagram
- K: Key data element
- M: Mandatory
- N: Numeric
- O: Optional
- Obl: Obligation

## 5 ADED dairy farming

### 5.1 Code sets

In this part of ISO 11788, code sets are added to the data element. When a data element has a code set, it can be a normative or an informative code set. A normative code set is specified in an International Standard; an informative code set only gives an example of possible values.

When there is agreement on the data element description, but the values of the code set differ between countries, the code set must be defined at the national level. The national code set can be found in the national data dictionary.

### 5.2 Entity relationship diagram

The relationship between two entity types can have the characteristics/cardinalities shown in Figure 1. The entity relationship diagram shown in Figure 2 shows the entity types (rectangles) and their relationship types (lines with certain characteristics).

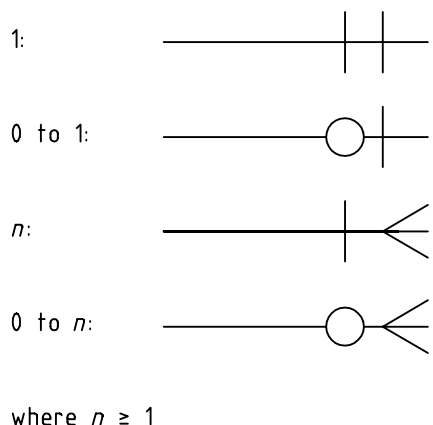
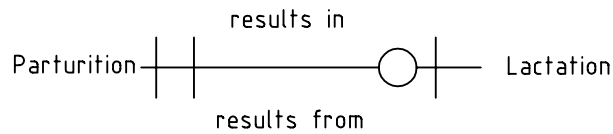


Figure 1 — Relationships between entity types

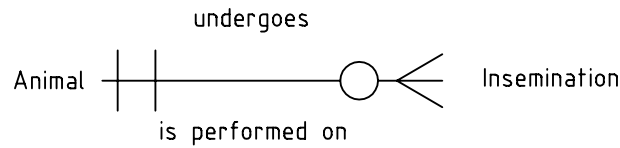
EXAMPLE 1



The cardinalities show that one occurrence of an entity type has a relationship to zero or one occurrence of another entity type. The relationship names have to be read clockwise.

In this case: A parturition may result in a new lactation. The other way around: a lactation results from one parturition. The relationship to parturition is used for identifying the lactation.

EXAMPLE 2



The cardinalities show that one occurrence of an entity type has a relationship to zero or more occurrences of another entity type.

In this case: An animal may undergo several inseminations, an insemination is performed on one animal. The relationship to the animal is used for identifying the insemination.

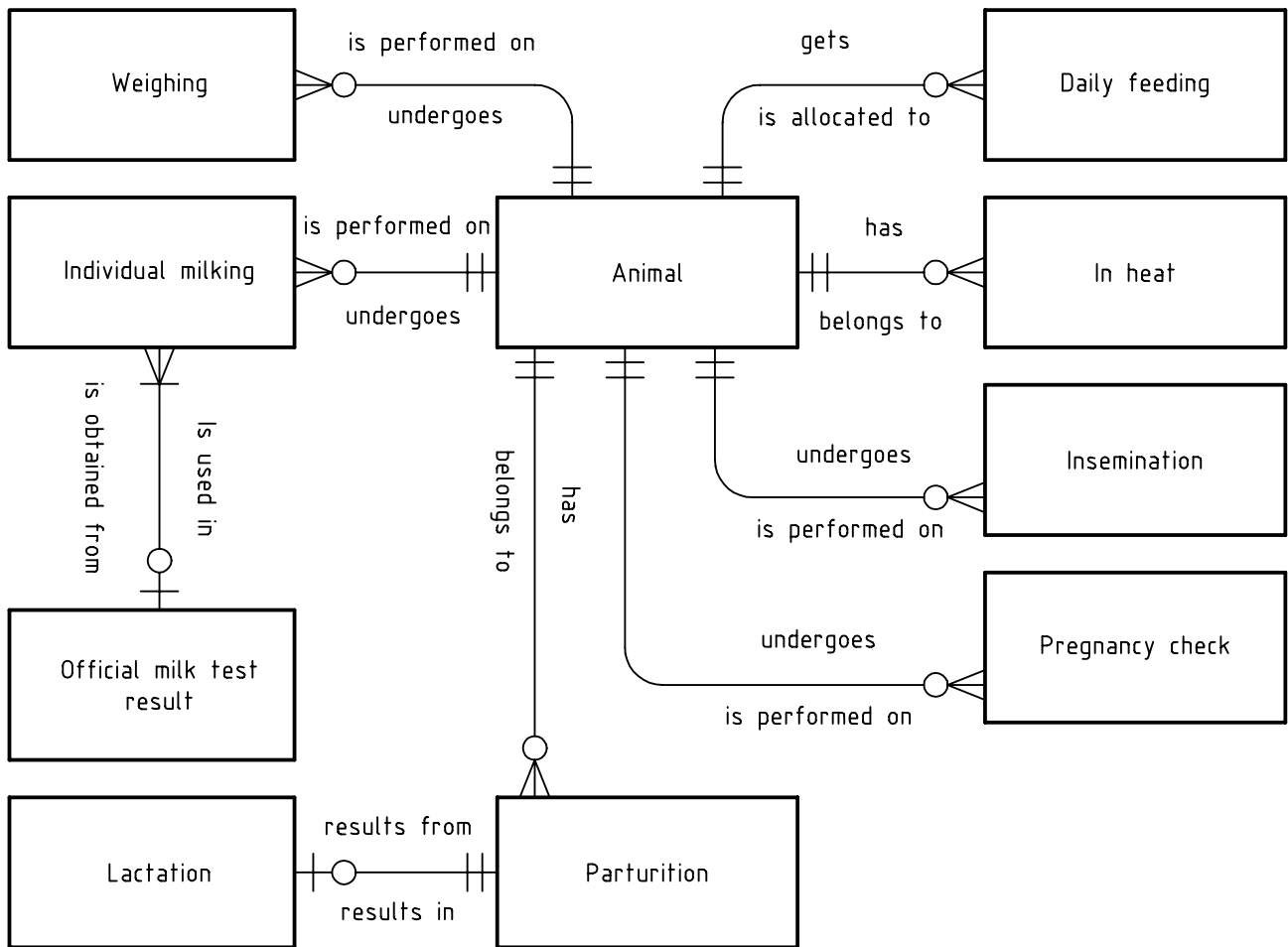


Figure 2 — Entity relationship diagram

### **5.3 Entities**

The entities for the field of dairy farming are given in annex A.

### **5.4 Data elements**

The data elements for the field of dairy farming are given in annex B.



## Annex A (normative)

### Entities

#### 990002 Animal

In this entity the data elements describe characteristics of an animal.

O	ADED-nr	Name
K	900070	Animal number
	900033	Group number
	900034	Date entered herd
	900035	Parity
	900038	Date left herd
	900045	Animal name
	900046	Animal sex
	900053	Birth date
	900056	Electronic ISO ID number
	900080	Identification number
	900081	Left herd reason
	900082	Sire registration number
	900083	Dam identification number
	900092	Animal status
	900097	Herd-specific electronic ID number

#### 990003 Individual milking

In this entity the data elements give information about one milking session of an animal.

O	ADED-nr	Name
K	900070	Animal number
K	900054	Date of milking session
K	900078	Time of milking session
	900024	Box number for sample bottle
	900025	Sample bottle number
	900027	Method of performance recording
	900042	Individual milk weight
	900051	Average flow rate during individual milking
	900057	Milking error flag
	900062	Maximum flow rate for individual milking
	900068	Stall or unit number for individual milking
	900079	Milking duration

## ISO 11788-2:2000(E)

### 990004 Lactation

In this entity the data elements give information about the lactation period and the (calculated) production in the current lactation of an animal.

O	ADED-nr	Name
K	900070	Animal number
K	900028	Parturition date
	900021	Projected/planned date to turn dry
	900044	Date turned dry
	900058	Lactation number
	900072	Amount of protein in lactation
	900073	Amount of protein 305 days
	900074	Amount of fat in lactation
	900075	Amount of fat 305 days
	900084	Amount of milk in lactation
	900086	Days in lactation
	900087	Amount of milk 305 days
	900090	Lactation calculation method

### 990005 Official milk test result

In this entity the data elements describe the official results of a milk test, based on one or more individual milkings.

O	ADED-nr	Name
K	900070	Animal number
K	900032	Milk test date
	900023	Somatic cell count linear score
	900026	Urea percentage milk
	900031	Percent protein
	900047	Somatic cell count
	900048	Percent lactose
	900077	Percent fat

### 990006 Daily feeding

In this entity the data elements describe the daily feed for an animal during a specific feed cycle.

O	ADED-nr	Name
K	900070	Animal number
K	900067	Feed type identifier
K	900088	Feed cycle start date
	900060	24 hour feed consumption
	900061	24 hour feed allocation
	900063	24 hour feed remainder

## 990007 Weighing

In this entity data elements are listed for describing the result of one weighing of an animal.

O	ADED-nr	Name
K	900070	Animal number
K	900039	Date of body weight measurement
K	900050	Time of body weight measurement
	900040	Body weight

## 990008 In heat

In this entity data elements for describing heat detection are listed.

O	ADED-nr	Name
K	900070	Animal number
K	900055	Heat detection date
	900095	Heat detection method

## 990009 Insemination

In this entity data elements belonging to a specific insemination, artificial or natural, are listed.

O	ADED-nr	Name
K	900070	Animal number
K	900030	Insemination date
	900076	Registration number service sire
	900094	Insemination status
	900096	Performing insemination

## 990010 Pregnancy check

In this entity data elements of a pregnancy check are listed.

O	ADED-nr	Name
K	900070	Animal number
K	900059	Pregnancy check date
	900085	Pregnancy check result
	900091	Pregnancy checking person

## ISO 11788-2:2000(E)

990011 Parturition

In this entity data elements describe one parturition. In case of multiple offspring, only the values for the firstborn offspring are sent.

O	ADED-nr	Name
K	900070	Animal number
K	900028	Parturition date
	900022	Offspring survival code
	900029	Offspring number
	900036	Weight at birth
	900037	Sex of offspring
	900052	Parturition ease
	900071	Number of offspring
	900098	Identification number offspring

## Annex B (normative)

### Data elements

ADED-number	: 900021
Name	: Projected/planned date to turn dry
Synonyms	:
Definition	: Date the animal is planned/projected to turn dry.
Comments	:
Format	: type: N length: 8 resolution: 0 unit: ccyymmdd
Values	: code set: N min: max:
Code set	:
ADED-number	: 900022
Name	: Offspring survival code
Synonyms	:
Definition	: Survival code of the first-born offspring.
Comments	:
Format	: type: AN length: 1 resolution: 0 unit:
Values	: code set: Y min: max:
Code set	: Informative:
	1 = alive after 48 hours; 2 = born alive, dead within 48 hours; 3 = dead at birth; 4 = unknown
ADED-number	: 900023
Name	: Somatic cell count linear score
Synonyms	:
Definition	: Somatic cell count linear score according to the official laboratory.
Comments	:
Format	: type: N length: 2 resolution: 1 unit:
Values	: code set: N min: max:
Code set	:

## ISO 11788-2:2000(E)

ADED-number : 900024  
Name : Box number for sample bottle  
Synonyms :  
Definition : Number of the collection box of the milk sample bottles.  
Comments :  
Format : type: N length: 6 resolution: 0 unit:  
Values : code set: N min: max:  
Code set :

ADED-number : 900025  
Name : Sample bottle number  
Synonyms :  
Definition : Number of the sample bottle.  
Comments :  
Format : type: N length: 15 resolution: 0 unit:  
Values : code set: N min: max:  
Code set :

ADED-number : 900026  
Name : Urea fraction milk  
Synonyms :  
Definition : Urea fraction of the milk according to the official laboratory.  
Comments :  
Format : type: N length: 3 resolution: 1 unit: ppm  
Values : code set: N min: max:  
Code set :

ADED-number : 900027  
Name : Method of performance recording  
Synonyms :  
Definition : Method of performance recording of the official milk test as defined by the ICAR-rules.  
Comments :  
Format : type: AN length: 1 resolution: 0 unit:  
Values : code set: Y min: max:  
Code set : Normative (ICAR-rules):  
A = Recording by official representative  
B = Recording by farmer  
C = Recording by official representative and farmer

ADED-number : 900028  
 Name : Parturition date  
 Synonyms : Calving date  
 Definition : Date the animal gave birth and began a new lactation.  
 Comments :  
 Format : type: N length: 8 resolution: 0 unit: ccyyymmdd  
 Values : code set: N min: max:  
 Code set :

ADED-number : 900029  
 Name : Offspring number  
 Synonyms :  
 Definition : Serial number, unique within the farm, given to the first-born offspring of the animal.  
 Comments : This element is comparable with Animal number (900070).  
 Format : type: N length: 6 resolution: 0 unit:  
 Values : code set: N min: max:  
 Code set :

ADED-number : 900030  
 Name : Insemination date  
 Synonyms : Service date  
 Definition : Date of the insemination.  
 Comments :  
 Format : type: N length: 8 resolution: 0 unit: ccyyymmdd  
 Values : code set: N min: max:  
 Code set :

ADED-number : 900031  
 Name : Percent protein  
 Synonyms :  
 Definition : Protein percentage of the milk according to the official laboratory.  
 Comments :  
 Format : type: N length: 4 resolution: 2 unit: %  
 Values : code set: N min: max:  
 Code set :

## ISO 11788-2:2000(E)

ADED-number : 900032  
Name : Milk test date  
Synonyms :  
Definition : Officially recorded date of milk test.  
Comments : Depending on the official recording organisation it can for example be the first or last test date.  
Format : type: N length: 8 resolution: 0 unit: ccyymmdd  
Values : code set: N min: max:  
Code set :

ADED-number : 900033  
Name : Group number  
Synonyms :  
Definition : Number of the group to which the animal belongs.  
Comments :  
Format : type: N length: 4 resolution: 0 unit:  
Values : code set: N min: max:  
Code set :

ADED-number : 900034  
Name : Date entered herd  
Synonyms : Enrolment date  
Definition : Date of arrival of the animal at the farm.  
Comments :  
Format : type: N length: 8 resolution: 0 unit: ccyymmdd  
Values : code set: N min: max:  
Code set :

ADED-number : 900035  
Name : Parity  
Synonyms : Calving number  
Definition : Number of parturitions of an animal.  
Comments :  
Format : type: N length: 2 resolution: 0 unit:  
Values : code set: N min: max:  
Code set :



ADED-number : 900036  
 Name : Weight at birth  
 Synonyms :  
 Definition : Weight at birth of the first-born offspring.  
 Comments :  
 Format : type: N length: 4 resolution: 0 unit: kg  
 Values : code set: N min: max:  
 Code set :

ADED-number : 900037  
 Name : Sex of offspring  
 Synonyms :  
 Definition : Sex of the first-born offspring.  
 Comments :  
 Format : type: AN length: 1 resolution: 0 unit:  
 Values : code set: Y min: max:  
 Code set : Normative:  
 F = Female; M = Male

ADED-number : 900038  
 Name : Date left herd  
 Synonyms : Removal date  
 Definition : Date of removal of the animal from the farm.  
 Comments :  
 Format : type: N length: 8 resolution: 0 unit: ccyymmdd  
 Values : code set: N min: max:  
 Code set :

ADED-number : 900039  
 Name : Date of body weight measurement  
 Synonyms :  
 Definition : Date the animal's body weight was measured.  
 Comments :  
 Format : type: N length: 8 resolution: 0 unit: ccyymmdd  
 Values : code set: N min: max:  
 Code set :

## ISO 11788-2:2000(E)

ADED-number : 900040  
Name : Body weight  
Synonyms :  
Definition : Measured weight of the individual animal.  
Comments :  
Format : type: N length: 4 resolution: 0 unit: kg  
Values : code set: N min: max:  
Code set :

ADED-number : 900042  
Name : Individual milk weight  
Synonyms : Milk yield  
Definition : Milk amount given by the animal during one milking session.  
Comments :  
Format : type: N length: 3 resolution: 1 unit: kg  
Values : code set: N min: max:  
Code set :

ADED-number : 900044  
Name : Date turned dry  
Synonyms :  
Definition : Date the animal turned dry and ended its lactation period.  
Comments :  
Format : type: N length: 8 resolution: 0 unit: ccyymmdd  
Values : code set: N min: max:  
Code set :

ADED-number : 900045  
Name : Animal name  
Synonyms :  
Definition : Name, unique within the farm, given to a certain animal.  
Comments :  
Format : type: AN length: 24 resolution: 0 unit:  
Values : code set: N min: max:  
Code set :

ADED-number : 900046  
 Name : Animal sex  
 Synonyms :  
 Definition : Sex of the animal.  
 Comments :  
 Format : type: AN length: 1 resolution: 0 unit:  
 Values : code set: Y min: max:  
 Code set : Normative:  
 F = Female; M = Male

ADED-number : 900047  
 Name : Somatic cell count  
 Synonyms :  
 Definition : Number of somatic cells in thousands according to the official laboratory.  
 Comments :  
 Format : type: N length: 4 resolution: 0 unit:  
 Values : code set: N min: max:  
 Code set :

ADED-number : 900048  
 Name : Percent lactose  
 Synonyms :  
 Definition : Percent milk sugar in the milk according to the official laboratory.  
 Comments :  
 Format : type: N length: 4 resolution: 2 unit: %  
 Values : code set: N min: max:  
 Code set :

ADED-number : 900050  
 Name : Time of body weight measurement  
 Synonyms :  
 Definition : Time the animal's body weight was measured.  
 Comments :  
 Format : type: N length: 6 resolution: 0 unit: hhmmss  
 Values : code set: N min: max:  
 Code set :

## ISO 11788-2:2000(E)

ADED-number : 900051  
Name : Average flow rate during individual milking  
Synonyms :  
Definition : Average flow rate of the milk leaving the udder during a milking session.  
Comments : Calculation: Individual milk weight (900042) divided by milking duration (900079).  
Format : type: N length: 3 resolution: 1 unit: kg/min  
Values : code set: N min: max:  
Code set :

ADED-number : 900052  
Name : Parturition ease  
Synonyms :  
Definition : Parturition ease for the mother animal.  
Comments :  
Format : type: AN length: 1 resolution: 0 unit:  
Values : code set: Y min: max:  
Code set : The code set has to be defined national.

ADED-number : 900053  
Name : Birth date  
Synonyms :  
Definition : Date of birth of an animal.  
Comments : Sometimes either the day or the month may be missing, then the birth date has to be assumed. So the value can be: real, assumed, unknown.  
Format : type: N length: 8 resolution: 0 unit: ccyymmdd  
Values : code set: N min: max:  
Code set :

ADED-number : 900054  
Name : Date of milking session  
Synonyms :  
Definition : Date of the milking session of the individual animal.  
Comments :  
Format : type: N length: 8 resolution: 0 unit: ccyymmdd  
Values : code set: N min: max:  
Code set :

ADED-number : 900055  
 Name : Heat detection date  
 Synonyms :  
 Definition : Date in heat was detected.  
 Comments :  
 Format : type: N length: 8 resolution: 0 unit: ccyymmdd  
 Values : code set: N min: max:  
 Code set :

ADED-number : 900056  
 Name : Electronic ISO ID number  
 Synonyms :  
 Definition : Electronic ID of the animal, in conformance with ISO 11784.  
 Comments :  
 Format : type: N length: 16 resolution: 0 unit:  
 Values : code set: N min: max:  
 Code set :

ADED-number : 900057  
 Name : Milking error flag  
 Synonyms :  
 Definition : Milking status of an individual milking.  
 Comments :  
 Format : type: AN length: 1 resolution: 0 unit:  
 Values : code set: Y min: max:  
 Code set : Informative:  
 1 = Manual ID; 2 = Calculated estimate; 3 = User entry; 4 = Repeat or other error

ADED-number : 900058  
 Name : Lactation number  
 Synonyms :  
 Definition : Lifetime serial number of the current lactation of the animal, that started on the parturition date.  
 Comments :  
 Format : type: N length: 2 resolution: 0 unit:  
 Values : code set: N min: max:  
 Code set :

## ISO 11788-2:2000(E)

ADED-number : 900059  
Name : Pregnancy check date  
Synonyms :  
Definition : Check date of pregnancy of the animal.  
Comments :  
Format : type: N length: 8 resolution: 0 unit: ccyymmdd  
Values : code set: N min: max:  
Code set :

ADED-number : 900060  
Name : 24 hour feed consumption  
Synonyms :  
Definition : Amount of feed the animal ate in the 24 hours feed cycle.  
Comments :  
Format : type: N length: 6 resolution: 3 unit: kg  
Values : code set: N min: max:  
Code set :

ADED-number : 900061  
Name : 24 hour feed allocation  
Synonyms :  
Definition : Amount of feed allocated to the animal in the 24 hours feed cycle.  
Comments :  
Format : type: N length: 6 resolution: 3 unit: kg  
Values : code set: N min: max:  
Code set :

ADED-number : 900062  
Name : Maximum flow rate for individual milking  
Synonyms :  
Definition : Maximum flow rate of the milk leaving the udder during a milking session.  
Comments :  
Format : type: N length: 3 resolution: 1 unit: kg/min  
Values : code set: N min: max:  
Code set :



ADED-number : 900063  
 Name : 24 hour feed remainder  
 Synonyms :  
 Definition : Amount of feed remained in the 24 hours feed cycle.  
 Comments : Can be negative.  
 Format : type: N length: 6 resolution: 3 unit: kg  
 Values : code set: N min: max:  
 Code set :

ADED-number : 900067  
 Name : Feed type identifier  
 Synonyms : Number of feed type  
 Definition : Farm specific serial number of the type of the feed.  
 Comments :  
 Format : type: N length: 2 resolution: 0 unit:  
 Values : code set: N min: max:  
 Code set :

ADED-number : 900068  
 Name : Stall or unit number for individual milking  
 Synonyms : Number of milking box  
 Definition : Serial number, unique within the farm, of the milking unit of a parlour.  
 Comments : There may be more than one milking parlour on the farm.  
 Format : type: N length: 4 resolution: 0 unit:  
 Values : code set: N min: max:  
 Code set :

ADED-number : 900070  
 Name : Animal number  
 Synonyms :  
 Definition : Serial number, unique within the farm, given to a certain animal.  
 Comments :  
 Format : type: N length: 6 resolution: 0 unit:  
 Values : code set: N min: max:  
 Code set :

## ISO 11788-2:2000(E)

AEDE-number : 900071  
Name : Number of offspring  
Synonyms :  
Definition : Number of offspring born in this parturition, both dead and alive.  
Comments :  
Format : type: N length: 1 resolution: 0 unit:  
Values : code set: N min: max:  
Code set :

AEDE-number : 900072  
Name : Amount of protein in lactation  
Synonyms :  
Definition : Amount of protein in the milk of an animal in the current lactation.  
Comments : Calculation depends on the Lactation calculation method (900090).  
Format : type: N length: 6 resolution: 2 unit: kg  
Values : code set: N min: max:  
Code set :

AEDE-number : 900073  
Name : Amount of protein 305 days  
Synonyms :  
Definition : Amount of protein in the milk of an animal in 305 days.  
Comments : Calculation depends on the Lactation calculation method (900090).  
Format : type: N length: 6 resolution: 2 unit: kg  
Values : code set: N min: max:  
Code set :

AEDE-number : 900074  
Name : Amount of fat in lactation  
Synonyms :  
Definition : Amount of fat in the milk of an animal in the current lactation.  
Comments : Calculation depends on the Lactation calculation method (900090).  
Format : type: N length: 6 resolution: 2 unit: kg  
Values : code set: N min: max:  
Code set :



ADED-number : 900075  
 Name : Amount of fat 305 days  
 Synonyms :  
 Definition : Amount of fat in the milk of an animal in 305 days.  
 Comments : Calculation depends on the Lactation calculation method (900090).  
 Format : type: N length: 6 resolution: 2 unit: kg  
 Values : code set: N min: max:  
 Code set :

ADED-number : 900076  
 Name : Registration number service sire  
 Synonyms :  
 Definition : Identification number of the service sire.  
 Comments : Number can be identification number, herd association number or farm specific number.  
 Format : type: AN length: 16 resolution: 0 unit:  
 Values : code set: N min: max:  
 Code set :

ADED-number : 900077  
 Name : Percent fat  
 Synonyms :  
 Definition : Fat percentage of the milk, according to the official laboratory.  
 Comments :  
 Format : type: N length: 4 resolution: 2 unit: %  
 Values : code set: N min: max:  
 Code set :

ADED-number : 900078  
 Name : Time of milking session  
 Synonyms :  
 Definition : Time of a milking session of the individual animal.  
 Comments : The time can be the average, the start or the ending time, depending on the system.  
 Format : type: N length: 6 resolution: 0 unit: hhmmss  
 Values : code set: N min: max:  
 Code set :

## ISO 11788-2:2000(E)

ADED-number : 900079  
Name : Milking duration  
Synonyms :  
Definition : Duration of the milking session of the individual animal.  
Comments :  
Format : type: N length: 6 resolution: 0 unit: hhmmss  
Values : code set: N min: max:  
Code set :

ADED-number : 900080  
Name : Identification number  
Synonyms :  
Definition : Official (in law) identification number of the animal on national or regional level.  
Comments :  
Format : type: AN length: 16 resolution: 0 unit:  
Values : code set: N min: max:  
Code set :

ADED-number : 900081  
Name : Left herd reason  
Synonyms :  
Definition : Reason the animal has left the herd.  
Comments :  
Format : type: AN length: 2 resolution: 0 unit:  
Values : code set: Y min: max:  
Code set : The code set has to be defined national.

ADED-number : 900082  
Name : Sire registration number  
Synonyms :  
Definition : Registration number of the sire.  
Comments : Number can be identification number, herd association number or farm specific number.  
Format : type: AN length: 16 resolution: 0 unit:  
Values : code set: N min: max:  
Code set :

ADED-number : 900083  
 Name : Dam identification number  
 Synonyms :  
 Definition : Official (in law) identification number of the dam on national or regional level.  
 Comments :  
 Format : type: AN length: 16 resolution: 0 unit:  
 Values : code set: N min: max:  
 Code set :

ADED-number : 900084  
 Name : Amount of milk in lactation  
 Synonyms :  
 Definition : Amount of milk of an animal in the current lactation.  
 Comments : Calculation depends on the lactation calculation method (900090).  
 Format : type: N length: 5 resolution: 0 unit: kg  
 Values : code set: N min: max:  
 Code set :

ADED-number : 900085  
 Name : Pregnancy check result  
 Synonyms : Pregnancy code  
 Definition : Result of the pregnancy check of the animal.  
 Comments :  
 Format : type: AN length: 1 resolution: 0 unit:  
 Values : code set: Y min: max:  
 Code set : Informative:  
 1 = Pregnant; 2 = Not pregnant; 3 = Undetermined

ADED-number : 900086  
 Name : Days in lactation  
 Synonyms :  
 Definition : Number of days the animal has given milk in the current lactation. Counting starts 1 day after the parturition date.  
 Comments :  
 Format : type: N length: 4 resolution: 0 unit:  
 Values : code set: N min: max:  
 Code set :

## ISO 11788-2:2000(E)

ADED-number : 900087  
Name : Amount of milk 305 days  
Synonyms :  
Definition : Amount of milk of an animal in 305 days.  
Comments : Calculation depends on the Lactation calculation method (900090).  
Format : type: N length: 5 resolution: 0 unit: kg  
Values : code set: N min: max:  
Code set :

ADED-number : 900088  
Name : Feed cycle start date  
Synonyms :  
Definition : Date of the start of the 24 hours feed cycle.  
Comments : The element can be used for future feed allocation of the animal and for past feed allocation, consumption and remainder.  
Format : type: N length: 8 resolution: 0 unit: ccyymmdd  
Values : code set: N min: max:  
Code set :

ADED-number : 900090  
Name : Lactation calculation method  
Synonyms :  
Definition : Method used for calculation of the lactation amounts.  
Comments :  
Format : type: AN length: 1 resolution: 0 unit:  
Values : code set: Y min: max:  
Code set : Code set (normative):  
1 = Official, by approved institutes; 2 = Unofficial

ADED-number : 900091  
Name : Pregnancy checking person  
Synonyms :  
Definition : Person who performs the pregnancy check.  
Comments : The check can be done by the farmer, veterinarian, etc.  
Format : type: AN length: 5 resolution: 0 unit:  
Values : code set: N min: max:  
Code set :

ADED-number : 900092  
 Name : Animal status  
 Synonyms :  
 Definition : Status of the animal.  
 Comments : This element may refer to reproduction and production status.  
 Format : type: AN length: 6 resolution: 0 unit:  
 Values : code set: Y min: max:  
 Code set : The code set has to be defined national.

ADED-number : 900094  
 Name : Insemination status  
 Synonyms :  
 Definition : Serial number of the insemination, performed in the heat period.  
 Comments :  
 Format : type: N length: 1 resolution: 0 unit:  
 Values : code set: N min: max:  
 Code set :

ADED-number : 900095  
 Name : Heat detection method  
 Synonyms :  
 Definition : Method used to detect in heat.  
 Comments : The detection can be done by visual observation, progesterone test, etc.  
 Format : type: AN length: 1 resolution: 0 unit:  
 Values : code set: N min: max:  
 Code set :

ADED-number : 900096  
 Name : Performing insemination  
 Synonyms : Service technician  
 Definition : Technician who was in charge of the insemination.  
 Comments : In case of natural inseminations a specific code will be used.  
 Format : type: AN length: 5 resolution: 0 unit:  
 Values : code set: N min: max:  
 Code set :

## ISO 11788-2:2000(E)

ADED-number : 900097  
Name : Herd-specific electronic ID number  
Synonyms :  
Definition : Electronic ID number of the existing transponder or responder system, specific within the herd.  
Comments :  
Format : type: N length: 16 resolution: 0 unit:  
Values : code set: N min: max:  
Code set :

ADED-number : 900098  
Name : Identification number offspring  
Synonyms :  
Definition : Official (in law) identification number of the animal's offspring on national or regional level.  
Comments :  
Format : type: AN length: 16 resolution: 0 unit:  
Values : code set: N min: max:  
Code set :



**ISO 11788-2:2000(E)**

---

---

**ICS 35.240.99; 65.020.01**

Price based on 26 pages

© ISO 2000 – All rights reserved