



**INTERNATIONAL STANDARD ISO 10303-46:1994
TECHNICAL CORRIGENDUM 1**

Published 1999-07-15

INTERNATIONAL ORGANIZATION FOR STANDARDIZATION • МЕЖДУНАРОДНАЯ ОРГАНИЗАЦИЯ ПО СТАНДАРТИЗАЦИИ • ORGANISATION INTERNATIONALE DE NORMALISATION

**Industrial automation systems and integration — Product data
representation and exchange —**

Part 46:

Integrated generic resources: Visual presentation

TECHNICAL CORRIGENDUM 1

*Systèmes d'automatisation industrielle et intégration — Représentation et échange de données de produits —
Partie 46: Ressources génériques intégrées: Présentation visuelle*

RECTIFICATIF TECHNIQUE 1

Technical Corrigendum 1 to International Standard ISO 10303-46:1994 was prepared by Technical Committee ISO/TC 184, *Industrial automation systems and integration*, Subcommittee SC 4, *Industrial data*.

This material is reproduced from ISO documents under International Organization for Standardization (ISO) Copyright License Number IHS/ICC/1996. Not for resale. No part of these ISO documents may be reproduced in any form, electronic retrieval system or otherwise, except as allowed in the copyright law of the country of use, or with the prior written consent of ISO (Case postale 56, 1211 Geneva 20, Switzerland, Fax +41 22 734 10 79), IHS or the ISO Licensor's members.

Introduction

This document corrects ISO 10303-46:1994, Product data representation and exchange — Part 46: Integrated generic resources: Visual presentation. The corrected document supersedes ISO 10303-46:1994.

The purpose of the modifications to the text of ISO 10303-46:1994 is to correct errors in the EXPRESS definitions likely to cause a compilation problem, to correct errors in Informal propositions and Formal propositions, to replace the annex for the computer-interpretable EXPRESS with a URL reference, and to replace the object identifier for the document and the schemas.

ICS 25.040.40

Ref. No. ISO 10303-46:1994/Cor.1:1999(E)

© ISO 1999

Printed in Switzerland

Modifications to the text of ISO 10303-46:1994**Clause 4, p. 5**

The EXPRESS specification for the presentation_organization_schema did not include a reference to required data type. The first required data type is an entity data type, the annotation_occurrence for the Formal propositions in area_dependent_annotation_representation and view_dependent_annotation_representation. The second required data type is an entity data type, the symbol_representation for the Formal propositions in symbol_representation_rule. The third required data type is an entity data type, the symbol_representation_relationship for the Formal propositions in symbol_representation_rule. The fourth required data type is an entity data type, the styled_item for the Formal propositions in camera_model and light_source. The fifth required data type is an entity data type, the founded_item. It is required to be referenced since it is now a supertype of view_volume. Add the following to the EXPRESS specification between the 'SCHEMA presentation_organization_schema;' and the 'REFERENCE FROM presentation_resource_schema':

```
REFERENCE FROM presentation_definition_schema
  (annotation_occurrence,
   symbol_representation,
   symbol_representation_relationship);
```

```
REFERENCE FROM presentation_appearance_schema
  (styled_item);
```

Delete the following EXPRESS specification:

```
REFERENCE FROM representation_schema
  (item_defined_transformation,
   item_in_context,
   mapped_item,
   representation,
   representation_item,
   representation_map,
   representation_relationship,
   representation_relationship_with_transformation);
```

Replace with the following EXPRESS specification:

```
REFERENCE FROM representation_schema
  (founded_item,
   item_defined_transformation,
   item_in_context,
   mapped_item,
   representation,
   representation_item,
   representation_map,
```

ISO 10303-46:1994/Cor.1:1999(E)

©ISO

```
representation_relationship,
representation_relationship_with_transformation);
```

*With the addition of the **annotation_occurrence**, **symbol_representation**, **symbol_representation_relationship** and **styled_item** to the **presentation_organization_schema**, **NOTE 1** changed. Delete **NOTE 1** and replace with the following:*

NOTE 1 The schemas referenced above can be found in the following parts of ISO 10303:

Presentation_definition_schema	Clause 5 of this part of ISO 10303
Presentation_appearance_schema	Clause 6 of this part of ISO 10303
Presentation_resource_schema	Clause 7 of this part of ISO 10303
Geometry_schema	ISO 10303-42
Representation_schema	ISO 10303-43
Measure_schema	ISO 10303-41
Support_resource_schema	ISO 10303-41

Clause 4.3.45, p. 13

*The Informal proposition of **layered_item** contradicts to the intended use of **presentation_layer_assignment**. The type of **representation_items** assigned to a layer shall not be restricted. Remove Informal proposition IP1.*

Clause 4.5.5, p. 26

*The EXPRESS specification of **view_volume** is revised to make it a subtype of **founded_item** in order to provide a representation context for the **projection_point** and **planar_box** attributes. Remove the EXPRESS specification and replace with the following:*

EXPRESS specification:

```
*)
ENTITY view_volume
  SUBTYPE OF (founded_item);
  projection_type           : central_or_parallel;
  projection_point          : cartesian_point;
  view_plane_distance      : length_measure;
  front_plane_distance     : length_measure;
  front_plane_clipping     : BOOLEAN;
  back_plane_distance      : length_measure;
  back_plane_clipping      : BOOLEAN;
  view_volume_sides_clipping : BOOLEAN;
  view_window              : planar_box;
END_ENTITY;
(*
```

Add the following note at the end of the entity description:

©ISO

ISO 10303-46:1994/Cor.1:1999(E)

NOTE Since `view_volume` is not a subtype of `geometric_representation_item` the instances of `cartesian_point` which is the `projection_point` attribute and `planar_box` which is the `view_window` attribute are not associated in the usual way with the `geometric_representation_context` of each `representation` using a `camera_model_d3` containing this `view_volume`. The `geometric_representation_context` is associated via the `founded_item` supertype.

Clause 4.5.9, p. 31

The EXPRESS specification of `light_source` contained logical errors in the WHERE rule. WR1 requires a role name qualified by attribute name 'ITEM' for argument 2 of built-in function USEDIN. Delete the current WR1 and replace WR1 with the following:

```
WR1: SIZEOF (USEDIN (SELF, 'PRESENTATION_APPEARANCE_SCHEMA.' +
    'STYLED_ITEM.ITEM')) = 0;
```

Clause 4.5.14, p. 35

The description of the Formal propositions does not give a correct explanation of WR2. Remove the description of WR2 and replace with the following:

WR2: The target of the mapping shall be a `planar_box`.

Clause 4.9.1, p. 39

The EXPRESS specification for the FUNCTION `acyclic_presentation_representation_relationship` contained logical errors in the function body. The assignment to variable 'x' requires a 'SET' and not a 'BAG'. Remove the EXPRESS specification and replace with the following:

EXPRESS specification:

```
*)
FUNCTION acyclic_presentation_representation_relationship
( relation : presentation_representation_relationship;
  children : SET OF presentation_representation ) : BOOLEAN;

LOCAL
  x : SET OF presentation_representation_relationship;
  local_children : SET OF presentation_representation;
END_LOCAL;

REPEAT i:=1 TO HIINDEX(children);
  IF relation\presentation_relationship.rep_1 ::= children[i] THEN
    RETURN(FALSE);
  END_IF;
END_REPEAT;

x := bag_to_set (USEDIN ( relation\presentation_relationship.rep_1,
  'REPRESENTATION_SCHEMA.' +
  'REPRESENTATION_RELATIONSHIP.REP_2' ));
```

ISO 10303-46:1994/Cor.1:1999(E)

©ISO

```

local_children := children + relation\representation_relationship.rep_1;

IF SIZEOF (x) > 0 THEN
  REPEAT i:=1 TO HIINDEX (x);
    IF NOT acyclic_presentation_representation_relationship
      (x[i] , local_children) THEN
      RETURN (FALSE);
    END_IF;
  END_REPEAT;
END_IF;

RETURN (TRUE);

END_FUNCTION;
(*)

```

Clause 5, p. 40

The EXPRESS specification for the presentation_definition_schema did not include a reference to a required data type. The required reference is a function, the bag_to_set for the EXPRESS specifications changed in acyclic_presentation_representation_relationship, acyclic_symbol_representation_relationship and field_in_table. Delete the following EXPRESS specification:

```

REFERENCE FROM support_resource_schema
  (label,
   text);

```

Replace with the following EXPRESS specification:

```

REFERENCE FROM support_resource_schema
  (label,
   text,
   bag_to_set);

```

Clause 5.4.13, p. 53

The EXPRESS specification of table_record_representation contained logical errors in the WHERE rule. WRI requires 'REPRESENTATION_SCHEMA.REPRESENTATION_MAP' as argument 2 of built-in function USEDIN and not 'REPRESENTATION_SCHEMA.MAPPED_ITEM.MAPPING_SOURCE.MAPPED_REPRESENTATION'. Delete the current WRI and replace WRI with the following:

```

WRI: (SIZEOF(USEDIN(SELF, 'REPRESENTATION_SCHEMA.' +
                  'REPRESENTATION_RELATIONSHIP.REP_2')) > 0)
      OR
      (SIZEOF( QUERY( map_item <* USEDIN(SELF, 'REPRESENTATION_SCHEMA.' +
                  'REPRESENTATION_MAP.' +

```

©ISO

ISO 10303-46:1994/Cor.1:1999(E)

```
'MAPPED_REPRESENTATION') |
PRESENTATION_DEFINITION_SCHEMA.TABLE_REPRESENTATION' IN
TYPEOF (using_representations (map_item)) ) ) > 0);
```

Clause 5.4.14, p. 54

The EXPRESS specification of **table_record_field_representation** contained logical errors in the WHERE rule. WR1 requires 'REPRESENTATION_SCHEMA.REPRESENTATION_MAP' as argument 2 of built-in function USEDIN and not 'REPRESENTATION_SCHEMA.MAPPED_ITEM.MAPPING_SOURCE.MAPPED_REPRESENTATION'. Delete the current WR1 and replace WR1 with the following:

```
WR1: (SIZEOF(USEDIN(SELF, 'REPRESENTATION_SCHEMA.' +
                    'REPRESENTATION_RELATIONSHIP.REP_2')) > 0)
      OR
      (SIZEOF( QUERY( map_item <* USEDIN(SELF, 'REPRESENTATION_SCHEMA.'+
                                          'REPRESENTATION_MAP.'+
                                          'MAPPED_REPRESENTATION') |
                                          'PRESENTATION_DEFINITION_SCHEMA.' +
                                          'TABLE_RECORD_REPRESENTATION' IN
                                          TYPEOF (using_representations (map_item)) ) ) > 0);
```

Clause 5.6.2, p. 72

The EXPRESS specification for the FUNCTION **acyclic_symbol_representation_relationship** contained logical errors in the function body. The assignment to variable 'x' requires a 'SET' and not a 'BAG'. Remove the EXPRESS specification and replace with the following:

EXPRESS specification:

```
*)
FUNCTION acyclic_symbol_representation_relationship
  (relation : symbol_representation_relationship;
   children : SET OF symbol_representation ) : BOOLEAN;
LOCAL
  x : SET OF symbol_representation_relationship;
  local_children : SET OF symbol_representation;
END_LOCAL;

REPEAT i:=1 TO HIINDEX(children);
  IF relation\representation_relationship.rep_1 :=: children[i] THEN
    RETURN(FALSE);
  END_IF;
END_REPEAT;

x := bag_to_set (USEDIN ( relation\representation_relationship.rep_1,
                        'REPRESENTATION_SCHEMA.'+
                        'REPRESENTATION_RELATIONSHIP.'+ 'REP_2'));
```

ISO 10303-46:1994/Cor.1:1999(E)

©ISO

```

local_children := children + relation\representation_relationship.rep_1;

IF SIZEOF (x) > 0 THEN
  REPEAT i:=1 TO HIINDEX (x);
    IF NOT acyclic_symbol_representation_relationship(x[i] ,
                                                    local_children) THEN
      RETURN (FALSE);
    END_IF;
  END_REPEAT;
END_IF;

RETURN (TRUE);

END_FUNCTION;
(*)

```

Clause 5.6.3, p. 73

*The EXPRESS specification for the FUNCTION **field_in_table** contained spelling and logical errors. The expression in the first QUERY requires a string 'PRESENTATION_DEFINITION_SCHEMA.TABLE_RECORD_REPRESENTATION' and not a string 'PRESENTATION_DEFINITIONS_SCHEMA.TABLE_RECORD_REPRESENTATION'. The declaration of variable 'symbol_rep_rel_set' requires a 'SET' and not a 'SET[1:?]'. The declaration of variable mapped_item_set' requires a 'SET' and not a 'SET[1:?]'. The declaration of variable 'table_record_rep_set' requires a 'SET' and not a 'SET[1:?]'. The assignment to variable 'symbol_rep_rel_set' requires a 'SET' and not a 'BAG'. The built-in function USEDIN in the second QUERY requires a role name qualified by an attribute name as argument 2. Remove the EXPRESS specification and replace with the following:*

EXPRESS specification:

```

*)
FUNCTION field_in_table (field : table_record_field_representation;
                        table : annotation_table_occurrence): BOOLEAN;
  LOCAL
    table_rep : table_representation;
    symbol_rep_rel_set : SET OF symbol_representation_relationship;
    mapped_item_set : SET OF mapped_item;
    table_record_rep_set : SET OF table_record_representation := [];
  END_LOCAL;

  table_rep := table\styled_item.item\mapped_item.mapping_source.
    mapped_representation;
  mapped_item_set := QUERY(item <* table_rep.items |
                          ('REPRESENTATION_SCHEMA.MAPPED_ITEM' IN
                           TYPEOF(item))
                          AND

```

©ISO

ISO 10303-46:1994/Cor.1:1999(E)

```

        ('PRESENTATION_DEFINITION_SCHEMA.' +
         'TABLE_RECORD_REPRESENTATION' IN
         TYPEOF(item\mapped_item.mapping_source.
                mapped_representation ))
    );
REPEAT i := 1 TO HIINDEX(mapped_item_set);
    table_record_rep_set := table_record_rep_set +
        mapped_item_set[i].mapping_source.mapped_representation;
END_REPEAT;

symbol_rep_rel_set := bag_to_set (USEDIN(table_rep,
        'REPRESENTATION_SCHEMA.' +
        'REPRESENTATION_RELATIONSHIP.REP_1'));

REPEAT i := 1 TO HIINDEX(symbol_rep_rel_set);
    table_record_rep_set := table_record_rep_set +
        symbol_rep_rel_set[i]\representation_relationship.rep_2;
END_REPEAT;

IF SIZEOF(QUERY( table_record_rep <* table_record_rep_set |
    (SIZEOF(QUERY( rep_rel <* USEDIN(table_record_rep,
        'REPRESENTATION_SCHEMA.' +
        'REPRESENTATION_RELATIONSHIP.REP_1') |
        ('PRESENTATION_DEFINITION_SCHEMA.' +
        'SYMBOL_REPRESENTATION_RELATIONSHIP' IN
        TYPEOF(rep_rel))
        AND
        (rep_rel.rep_2 ::= field)
        )) > 0)
    OR
    (SIZEOF(QUERY(item <* table_record_rep.items |
        ('REPRESENTATION_SCHEMA.MAPPED_ITEM' IN
        TYPEOF(item))
        AND
        (field ::= item\mapped_item.mapping_source.
            mapped_representation )
        )) > 0)
    )) = 0 THEN
    RETURN(FALSE);
END_IF;

RETURN(TRUE);

END_FUNCTION;
(*

```


ISO 10303-46:1994/Cor.1:1999(E)

©ISO

Clause 6, p. 74

*The EXPRESS specification for the **presentation_appearance_schema** did not include a reference to required data type. The first required data type is an entity data type, the group for the amended **SELECT type style_context_select**. The second required reference is a function, the **bag_to_set** for the EXPRESS specifications changed in **acyclic_occlusion_precedence**. Add the following EXPRESS specification before the 'REFERENCE FROM MEASURE_SCHEMA':*

```
REFERENCE FROM group_schema
    (group);
```

Delete the following EXPRESS specification:

```
REFERENCE FROM support_resource_schema
    (label);
```

Replace with the following EXPRESS specification:

```
REFERENCE FROM support_resource_schema
    (label,
    bag_to_set);
```

Clause 6.3.1, p. 80

*The possibility to control the presentation style by a layer is a fundamental concept of ISO 10303-46. However the EXPRESS specification for the type **style_context_select** did not include the necessary entities. Remove the EXPRESS specification and replace with the following:*

EXPRESS specification:

```
*)
TYPE style_context_select = SELECT
    (group,
    presentation_layer_assignment,
    representation,
    representation_item,
    presentation_set);
END_TYPE;
(*
```

Clause 6.3.43, p. 96

*The restriction of invisibility to **presentation_representation** does not satisfy the requirement to define a complete model as invisible. Include the entity representation instead of **presentation_representation** in the **SELECT type invisible_item**. Remove the EXPRESS specification and replace with the following:*

©ISO

ISO 10303-46:1994/Cor.1:1999(E)

EXPRESS specification:

```

*)
TYPE invisible_item = SELECT
  (styled_item,
   presentation_layer_assignment,
   representation);
END_TYPE;
(*

```

Clause 6.13.1, p. 130

The EXPRESS specification for the FUNCTION acyclic_occlusion_precedence contained logical errors in the function body. The assignment to variable 'x' requires a 'SET' and not a 'BAG'. Remove the EXPRESS specification and replace with the following:

EXPRESS specification:

```

*)
FUNCTION acyclic_occlusion_precedence
  ( relation : occlusion_precedence;
    set_of_lower : SET OF hiding_or_blanking_select ) : BOOLEAN;
LOCAL
  x : SET OF occlusion_precedence;
  local_set_of_lower : SET OF hiding_or_blanking_select;
END_LOCAL;
REPEAT i:=1 TO HIINDEX(set_of_lower);
  IF relation.higher_precedence ::= set_of_lower[i] THEN
    RETURN(FALSE);
  END_IF;
END_REPEAT;
x := bag_to_set (USEDIN ( relation.higher_precedence,
  'PRESENTATION_APPEARANCE_SCHEMA.' +
  'OCCLUSION_PRECEDENCE.LOWER_PRECEDENCE'));
local_set_of_lower := set_of_lower + relation.higher_precedence;
IF SIZEOF (x) > 0 THEN
  REPEAT i:=1 TO HIINDEX (x);
    If NOT acyclic_occlusion_precedence(x[i] ,
                                          local_set_of_lower) THEN
      RETURN (FALSE);
    END_IF;
  END_REPEAT;
END_IF;
RETURN (TRUE);
END_FUNCTION;
(*

```

ISO 10303-46:1994/Cor.1:1999(E)

©ISO

Clause 7.3.13, p.139

The EXPRESS specification of colour_associated contained logical errors in the attribute declaration. Attribute 'name' requires a type 'label' and not 'colour'. Remove the EXPRESS specification and replace with the following:

EXPRESS specification:

```

*)
ENTITY colour_associated
  SUBTYPE OF (colour);
  name : label;
  variable_to_be_shown : SET [1:?] OF REAL;
  mapping : colour_association_table;
END_ENTITY;
( *
    
```

Annex B.1, p. 150

With the changes identified in this Technical Corrigendum, the object identifier for this part of ISO 10303 has changed. Remove the object identifier for the document and replace with the following:

{ iso standard 10303 part(46) version (2) }

Annex B.2.1, p. 150

With the changes identified in this Technical Corrigendum, the object identifier for the presentation_organisation_schema has changed. Remove the object identifier for the presentation_organisation_schema and replace with the following:

{ iso standard 10303 part(46) version (2) object(1) presentation-organisation-schema(1) }

Annex B.2.2, p. 150

With the changes identified in this Technical Corrigendum, the object identifier for the presentation_definition_schema has changed. Remove the object identifier for the presentation_definition_schema and replace with the following:

{ iso standard 10303 part(46) version (2) object(1) presentation-definition schema(2) }

Annex B.2.3, p. 150

With the changes identified in this Technical Corrigendum, the object identifier for the presentation_appearance_schema has changed. Remove the object identifier for the presentation_appearance_schema and replace with the following:

{ iso standard 10303 part(46) version (2) object(1) presentation-appearance-schema(3) }

©ISO

ISO 10303-46:1994/Cor.1:1999(E)

Annex B.2.4, p. 151

With the changes identified in this Technical Corrigendum, the object identifier for the presentation_resource_schema has changed. Remove the object identifier for the presentation_resource_schema and replace with the following:

{ iso standard 10303 part(46) version (2) object(1) presentation-resource-schema(4) }

Annex C, p. 152

With the changes identified in this Technical Corrigendum, the EXPRESS contained on the diskette is incorrect. Replace the contents of the annex with the following:

This annex provides a listing of the EXPRESS entity names and corresponding short names as specified in this part of ISO 10303. It also provides a listing of the complete EXPRESS schema specified in this part of ISO 10303 without comments or other explanatory text. This annex is available in computer-interpretable form and can be found at the following URLs:

Short names: <http://www.mel.nist.gov/div826/subject/apde/snr/>
 EXPRESS: <http://www.mel.nist.gov/step/parts/part046/is/tc1/>

If there is difficulty accessing these sites contact ISO Central Secretariat or contact the ISO TC 184/SC4 Secretariat directly at: sc4sec@cme.nist.gov.

NOTE The information provided in computer-interpretable form at the above URLs is informative. The information that is contained in the body of this part of ISO 10303 is normative.

Annex E, p. 160, 173, 193

The EXPRESS-G diagram figure E.4 should be changed to take account of the revised definition of view_volume. Modify figure E.4 to show view_volume as a subtype of founded_item imported from representation schema. The EXPRESS-G diagram figure E.17 should be changed to take account of the revised definition of style_context_select. Modify figure E.17 to include group and presentation_layer_assignment in the SELECT. The EXPRESS-G diagram figure E.37 should be changed to take account of the revised definition of invisible_item. Modify figure E.17 to include representation instead of presentation_representation in the SELECT. Replacement pages are provided for figure E.4, E.17 and E.37.

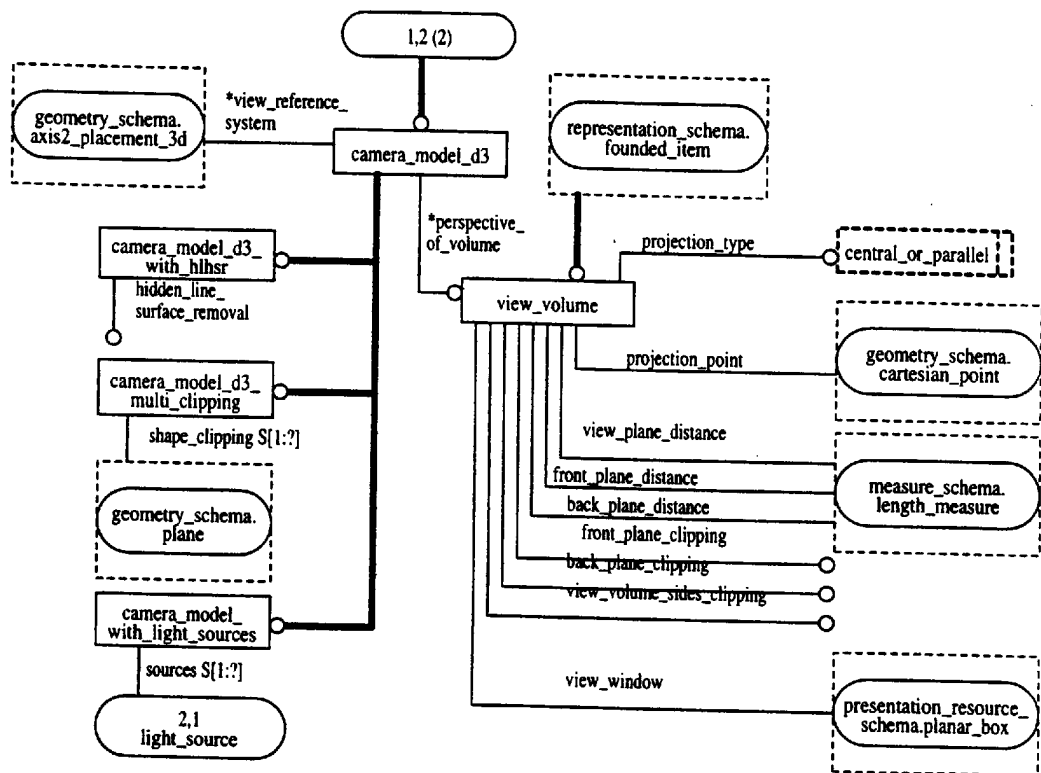


Figure E.4 – presentation_organization_schema – EXPRESS-G diagram 4 of 7

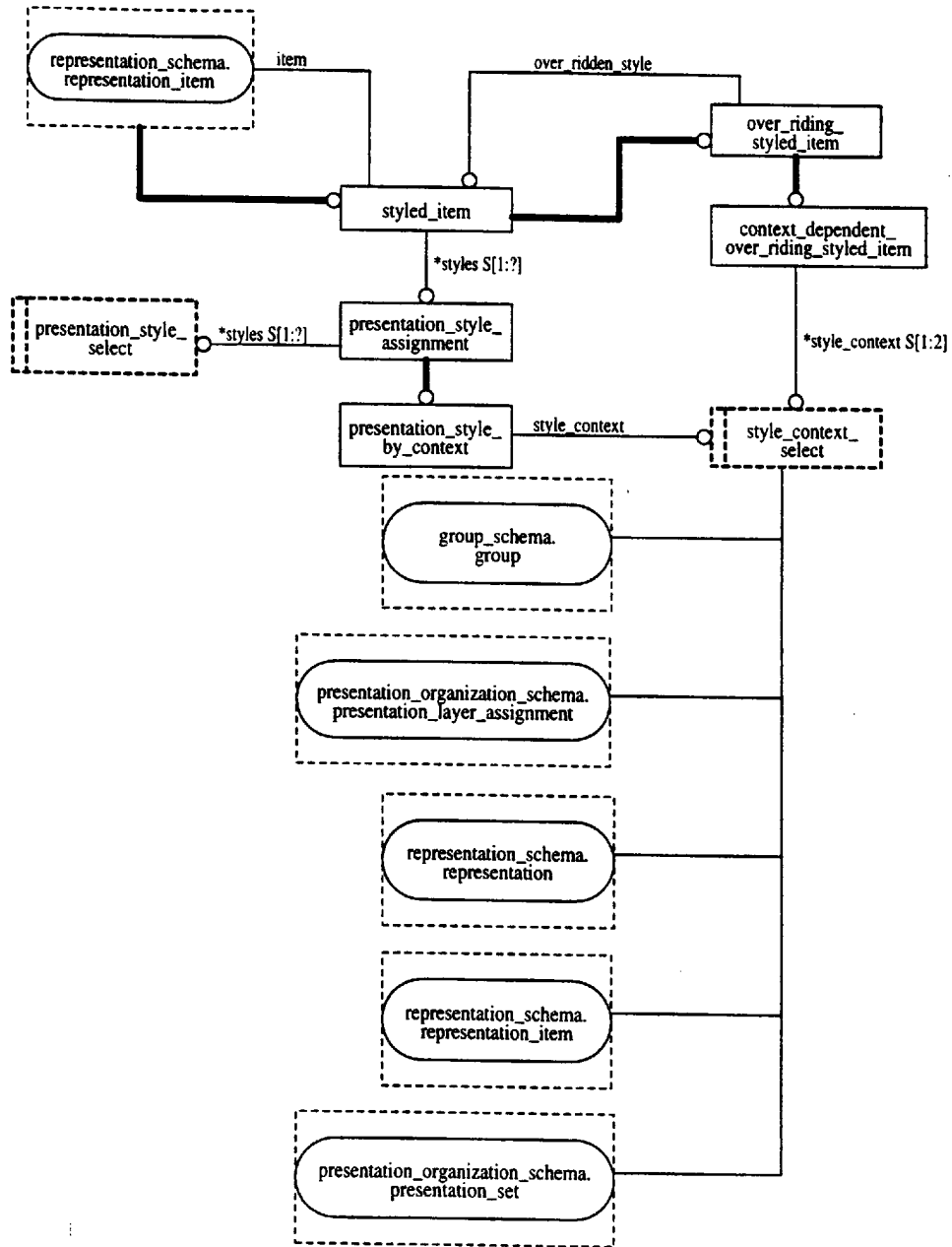


Figure E.17 – presentation_appearance_schema – EXPRESS-G diagram 1 of 21

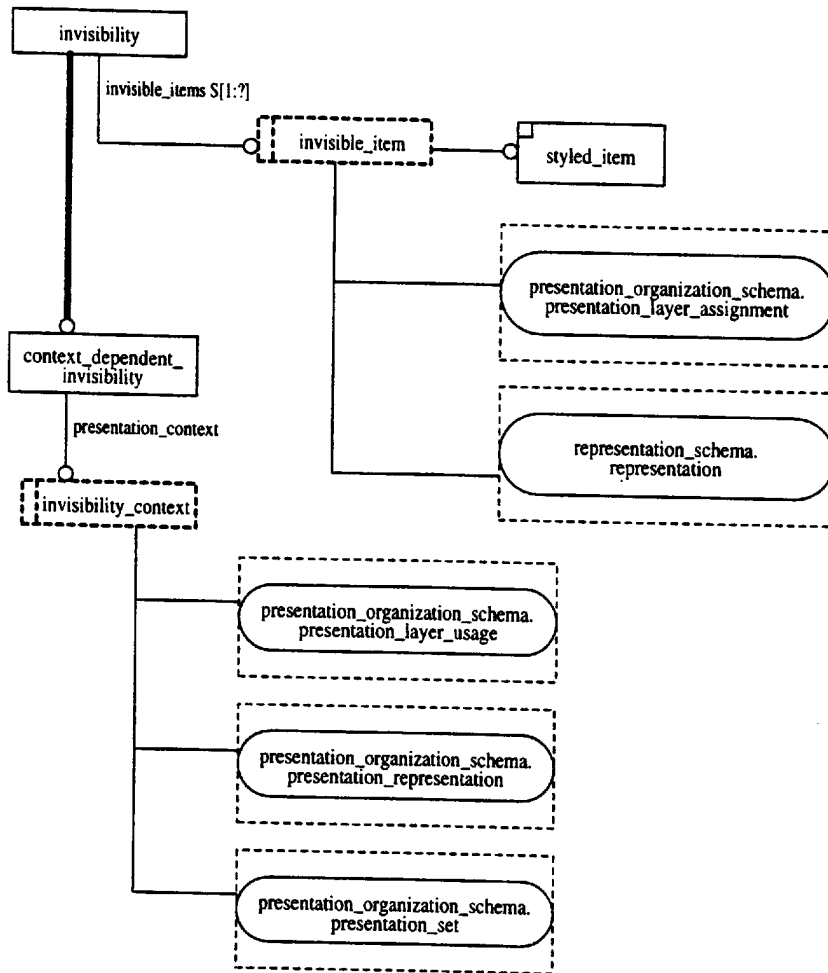


Figure E.37 – presentation_appearance_schema – EXPRESS-G diagram 21 of 21