
**Electronic data interchange for
administration, commerce and transport
(EDIFACT) — Application level syntax rules
(Syntax version number: 4, Syntax release
number: 1) —**

Part 2:
Syntax rules specific to batch EDI

*Échange de données informatisé pour l'administration, le commerce et le
transport (EDIFACT) — Règles de syntaxe au niveau de l'application
(numéro de version de syntaxe: 4, numéro d'édition de syntaxe: 1) —*

Partie 2: Règles de syntaxe spécifiques à l'EDI par lots



Reference number
ISO 9735-2:2002(E)

© ISO 2002

PDF disclaimer

This PDF file may contain embedded typefaces. In accordance with Adobe's licensing policy, this file may be printed or viewed but shall not be edited unless the typefaces which are embedded are licensed to and installed on the computer performing the editing. In downloading this file, parties accept therein the responsibility of not infringing Adobe's licensing policy. The ISO Central Secretariat accepts no liability in this area.

Adobe is a trademark of Adobe Systems Incorporated.

Details of the software products used to create this PDF file can be found in the General Info relative to the file; the PDF-creation parameters were optimized for printing. Every care has been taken to ensure that the file is suitable for use by ISO member bodies. In the unlikely event that a problem relating to it is found, please inform the Central Secretariat at the address given below.

© ISO 2002

All rights reserved. Unless otherwise specified, no part of this publication may be reproduced or utilized in any form or by any means, electronic or mechanical, including photocopying and microfilm, without permission in writing from either ISO at the address below or ISO's member body in the country of the requester.

ISO copyright office
Case postale 56 • CH-1211 Geneva 20
Tel. + 41 22 749 01 11
Fax + 41 22 749 09 47
E-mail copyright@iso.ch
Web www.iso.ch

Printed in Switzerland

Foreword

ISO (the International Organization for Standardization) is a worldwide federation of national standards bodies (ISO member bodies). The work of preparing International Standards is normally carried out through ISO technical committees. Each member body interested in a subject for which a technical committee has been established has the right to be represented on that committee. International organizations, governmental and non-governmental, in liaison with ISO, also take part in the work. ISO collaborates closely with the International Electrotechnical Commission (IEC) on all matters of electrotechnical standardization.

International Standards are drafted in accordance with the rules given in the ISO/IEC Directives, Part 3.

The main task of technical committees is to prepare International Standards. Draft International Standards adopted by the technical committees are circulated to the member bodies for voting. Publication as an International Standard requires approval by at least 75 % of the member bodies casting a vote.

Attention is drawn to the possibility that some of the elements of this part of ISO 9735 may be the subject of patent rights. ISO shall not be held responsible for identifying any or all such patent rights.

ISO 9735-2 was prepared by Technical Committee ISO/TC 154, *Processes, data elements and documents in commerce, industry and administration* in collaboration with UN/CEFACT through the Joint Syntax Working Group (JSWG).

This second edition cancels and replaces the first edition (ISO 9735-2:1998). However ISO 9735:1988 and its Amendment 1:1992 are provisionally retained for the reasons given in clause 2.

Furthermore, for maintenance reasons the Syntax service directories have been removed from all parts of the ISO 9735 series. They are now consolidated in a new part, ISO 9735-10.

At the time of publication of ISO 9735-1:1998, ISO 9735-10 had been allocated as a part for "Security rules for interactive EDI". This was subsequently withdrawn because of lack of user support, and as a result, all relevant references to the title "Security rules for interactive EDI" were removed in this second edition of ISO 9735-2.

Definitions from all parts of the ISO 9735 series have been consolidated and included in ISO 9735-1.

Together with ISO 9735-1, this part of ISO 9735 is an enhancement of ISO 9735:1988 and its Amendment 1:1992.

ISO 9735 consists of the following parts, under the general title *Electronic data interchange for administration, commerce and transport (EDIFACT) — Application level syntax rules (Syntax version number: 4, Syntax release number: 1)*:

- *Part 1: Syntax rules common to all parts*
- *Part 2: Syntax rules specific to batch EDI*
- *Part 3: Syntax rules specific to interactive EDI*
- *Part 4: Syntax and service report message for batch EDI (message type — CONTRL)*
- *Part 5: Security rules for batch EDI (authenticity, integrity and non-repudiation of origin)*
- *Part 6: Secure authentication and acknowledgement message (message type — AUTACK)*
- *Part 7: Security rules for batch EDI (confidentiality)*

ISO 9735-2:2002(E)

- *Part 8: Associated data in EDI*
- *Part 9: Security key and certificate management message (message type — KEYMAN)*
- *Part 10: Syntax service directories*

Further parts may be added in the future.

Introduction

This part of ISO 9735 includes the rules at the application level for the structuring of data in the interchange of electronic messages in an open environment, based on the requirements of either batch or interactive processing. These rules have been agreed by the United Nations Economic Commission for Europe (UN/ECE) as syntax rules for Electronic Data Interchange for Administration, Commerce and Transport (EDIFACT) and are part of the United Nations Trade Data Interchange Directory (UNTDID) which also includes both batch and interactive Message Design Guidelines.

This part of ISO 9735 may be used in any application, but messages using these rules may only be referred to as EDIFACT messages if they comply with other guidelines, rules and directories in the UNTDID. For UN/EDIFACT batch messages, the message design rules for batch usage apply. These rules are maintained in the UNTDID.

Communications specifications and protocols are outside the scope of this part of ISO 9735.

This part of ISO 9735 is a redraft of corresponding sections in the previous version of ISO 9735. It is identical, except for minor changes to terminology, and for clarification of the use of segment groups.

Electronic data interchange for administration, commerce and transport (EDIFACT) — Application level syntax rules (Syntax version number: 4, Syntax release number: 1) —

Part 2: Syntax rules specific to batch EDI

1 Scope

This part of ISO 9735 specifies syntax rules specifically for the formatting of batch messages to be interchanged between computer application systems. For the transfer of packages in a batch environment, see ISO 9735-8.

2 Conformance

Whereas this part shall use a version number of "4" in the mandatory data element 0002 (Syntax version number), and shall use a release number of "01" in the conditional data element 0076 (Syntax release number), each of which appear in the segment UNB (Interchange header), interchanges continuing to use the syntax defined in the earlier published versions shall use the following Syntax version numbers, in order to differentiate them from each other and from this part:

- ISO 9735:1988: *Syntax version number: 1*
- ISO 9735:1988 (amended and reprinted in 1990): *Syntax version number: 2*
- ISO 9735:1988 and its Amendment 1:1992: *Syntax version number: 3*
- ISO 9735:1998: *Syntax version number: 4*

Conformance to a standard means that all of its requirements, including all options, are supported. If all options are not supported, any claim of conformance shall include a statement which identifies those options to which conformance is claimed.

Data that is interchanged is in conformance if the structure and representation of the data conforms to the syntax rules specified in this part of ISO 9735.

Devices supporting this part of ISO 9735 are in conformance when they are capable of creating and/or interpreting the data structured and represented in conformance with the standard.

Conformance to this part shall include conformance to ISO 9735-1 and ISO 9735-10.

When identified in this part of ISO 9735, provisions defined in related standards shall form part of the conformance criteria.

3 Normative references

The following normative documents contain provisions which, through reference in this text, constitute provisions of this part of ISO 9735. For dated references, subsequent amendments to, or revisions of, any of these publications do not apply. However, parties to agreements based on this part of ISO 9735 are encouraged to investigate the possibility of applying the most recent editions of the normative documents indicated below. For undated references, the latest edition of the normative document referred to applies. Members of ISO and IEC maintain registers of currently valid International Standards.

ISO 9735-1:2002, *Electronic data interchange for administration, commerce and transport (EDIFACT) — Application level syntax rules (Syntax version number: 4, Syntax release number: 1) — Part 1: Syntax rules common to all parts*

ISO 9735-10:2002, *Electronic data interchange for administration, commerce and transport (EDIFACT) — Application level syntax rules (Syntax version number: 4, Syntax release number: 1) — Part 10: Syntax service directories*

4 Terms and definitions

For the purposes of this part of ISO 9735, the terms and definitions given in ISO 9735-1 apply.

5 Batch EDI interchange structure

The service string advice (if used) and the header and trailer service segments (excluding those used for security and associated data, which are defined in related parts of this International Standard), shall appear in a batch EDI interchange in the order shown in Figure 1.

Name	Tag	Status
Service string advice	UNA	Conditional
Interchange header	UNB	Mandatory
Group header	UNG	Conditional
Message header	UNH	Mandatory
<div style="border: 1px solid black; padding: 5px; display: inline-block;"> Message body </div>		
Message trailer	UNT	Mandatory
Group trailer	UNE	Conditional
Interchange trailer	UNZ	Mandatory

Figure 1 — Batch EDI interchange structure

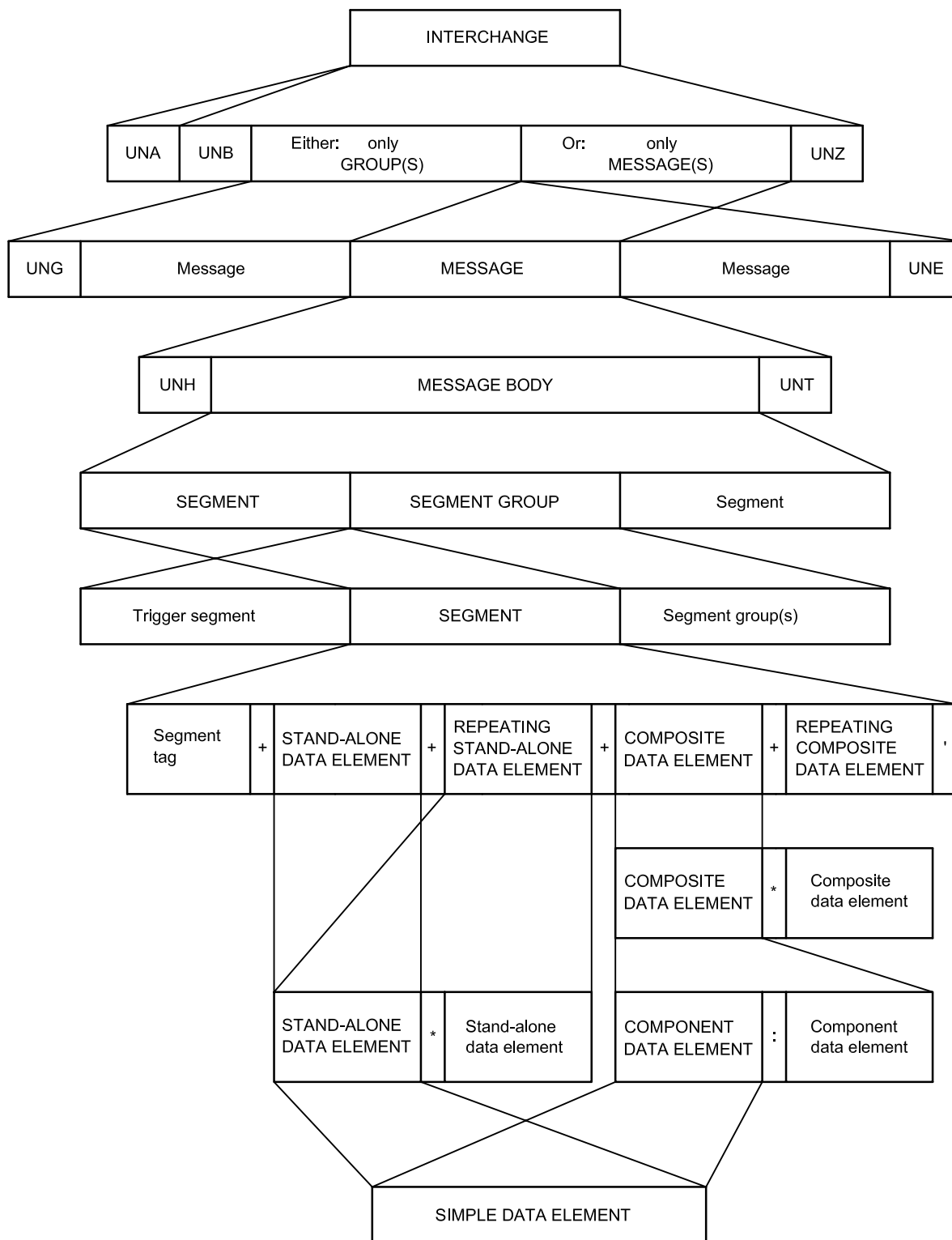
In Figure 1, the lines to the left show the pairing of header and trailer segments. For simplicity, an interchange containing only one group and one message is shown.

When used, the UNA service string advice applies only to the interchange which it precedes. For the specification of the UNA, see ISO 9735-1:2002, annex A.

For the specification of the header and trailer segments, see ISO 9735-10.

NOTE Segments for use in UN/EDIFACT messages are defined in the United Nations Trade Data Interchange Directory (UNTDID).

6 Batch EDI message within an interchange



NOTE The default service characters are used for illustrative purposes.

Figure 2 — Batch EDI message within an interchange

Legend:

An **INTERCHANGE** contains:

- UNA, Service String Advice, if used
- UNB, Interchange Header
- Either: Only group(s) Or: Only message(s)
- UNZ, Interchange Trailer

A **GROUP** contains:

- UNG, Group Header
- message(s)
- UNE, Group Trailer

A **MESSAGE** contains:

- UNH, Message Header
- a message body
- UNT, Message Trailer

A **MESSAGE BODY** contains:

- segment(s) and/or segment group(s)

A **SEGMENT GROUP** contains:

- a trigger segment
- segment(s) and possibly segment group(s)

A **SEGMENT** contains:

- a segment tag
- stand-alone data element(s) and/or composite data element(s) and/or repeating stand-alone data element(s) and/or repeating composite data element(s)

A **REPEATING STAND-ALONE DATA ELEMENT** is:

- one or more occurrences of the same stand-alone data element

A **REPEATING COMPOSITE DATA ELEMENT** is:

- one or more occurrences of the same composite data element

A **COMPOSITE DATA ELEMENT** contains:

- two or more component data elements

A **COMPONENT DATA ELEMENT** is:

- a simple data element

A **STAND-ALONE DATA ELEMENT** is:

- a simple data element

A **SIMPLE DATA ELEMENT** contains:

- a single data element value

Figure 2 — Batch EDI message within an interchange (continued)

ICS 35.240.60

Price based on 4 pages

© ISO 2002 – All rights reserved