
**Cheese, cheese rind and processed
cheese — Determination of natamycin
content —**

Part 2:
**High-performance liquid
chromatographic method for cheese,
cheese rind and processed cheese**

*Fromage, croûte de fromage et fromages fondus — Détermination de la
teneur en natamycine —*

*Partie 2: Méthode par chromatographie liquide à haute performance
pour fromage, croûte de fromage et fromages fondus*



Reference numbers
ISO 9233-2:2007(E)
IDF 140-2:2007(E)

© ISO and IDF 2007

PDF disclaimer

This PDF file may contain embedded typefaces. In accordance with Adobe's licensing policy, this file may be printed or viewed but shall not be edited unless the typefaces which are embedded are licensed to and installed on the computer performing the editing. In downloading this file, parties accept therein the responsibility of not infringing Adobe's licensing policy. Neither the ISO Central Secretariat nor the IDF accepts any liability in this area.

Adobe is a trademark of Adobe Systems Incorporated.

Details of the software products used to create this PDF file can be found in the General Info relative to the file; the PDF-creation parameters were optimized for printing. Every care has been taken to ensure that the file is suitable for use by ISO member bodies and IDF national committees. In the unlikely event that a problem relating to it is found, please inform the ISO Central Secretariat at the address given below.

© ISO 2007



COPYRIGHT PROTECTED DOCUMENT

© ISO and IDF 2007

All rights reserved. Unless otherwise specified, no part of this publication may be reproduced or utilized in any form or by any means, electronic or mechanical, including photocopying and microfilm, without permission in writing from either ISO or IDF at the respective address below.

ISO copyright office
Case postale 56 • CH-1211 Geneva 20
Tel. + 41 22 749 01 11
Fax + 41 22 749 09 47
E-mail copyright@iso.org
Web www.iso.org

International Dairy Federation
Diamant Building • Boulevard Auguste Reyers 80 • B-1030 Brussels
Tel. + 32 2 733 98 88
Fax + 32 2 733 04 13
E-mail info@fil-idf.org
Web www.fil-idf.org

Published in Switzerland

Contents

Page

Foreword.....	iv
Foreword.....	v
1 Scope	1
2 Terms and definitions.....	1
3 Principle	1
4 Reagents	2
5 Apparatus	2
6 Sampling.....	3
7 Preparation of test sample.....	3
7.1 Cheese rind	3
7.2 Cheese interior and processed cheese	4
8 Procedure	4
8.1 Test portion	4
8.2 Preparation of test solution	4
8.3 Determination	5
9 Calculation and expression of results.....	6
9.1 Calculation of natamycin mass fraction.....	6
9.2 Calculation of surface-area-related natamycin mass	7
9.3 Correction of results.....	7
9.4 Expression of results	7
10 Precision.....	7
10.1 Interlaboratory tests	7
10.2 Repeatability.....	7
10.3 Reproducibility.....	7
11 Test report	8
Annex A (informative) Examples	9
Annex B (informative) Results of interlaboratory trial.....	11
Bibliography	12

Foreword

ISO (the International Organization for Standardization) is a worldwide federation of national standards bodies (ISO member bodies). The work of preparing International Standards is normally carried out through ISO technical committees. Each member body interested in a subject for which a technical committee has been established has the right to be represented on that committee. International organizations, governmental and non-governmental, in liaison with ISO, also take part in the work. ISO collaborates closely with the International Electrotechnical Commission (IEC) on all matters of electrotechnical standardization.

International Standards are drafted in accordance with the rules given in the ISO/IEC Directives, Part 2.

The main task of technical committees is to prepare International Standards. Draft International Standards adopted by the technical committees are circulated to the member bodies for voting. Publication as an International Standard requires approval by at least 75 % of the member bodies casting a vote.

Attention is drawn to the possibility that some of the elements of this document may be the subject of patent rights. ISO shall not be held responsible for identifying any or all such patent rights.

ISO 9233-2|IDF 140-2 was prepared by Technical Committee ISO/TC 34, *Food products*, Subcommittee SC 5, *Milk and milk products* and the International Dairy Federation (IDF) and is being published jointly by ISO and IDF.

This first edition of ISO 9233-2|IDF 140-2, together with ISO 9233-1|IDF 140-1, cancels and replaces the first edition of ISO 9233:1991, which has been technically revised.

ISO 9233|IDF 140 consists of the following parts, under the general title *Cheese, cheese rind and processed cheese — Determination of natamycin content*:

- *Part 1: Molecular absorption spectrometric method for cheese rind*
- *Part 2: High-performance liquid chromatographic method for cheese, cheese rind and processed cheese*

Foreword

IDF (the International Dairy Federation) is a worldwide federation of the dairy sector with a National Committee in every member country. Every National Committee has the right to be represented on the IDF Standing Committees carrying out the technical work. IDF collaborates with ISO in the development of standard methods of analysis and sampling for milk and milk products.

Draft International Standards adopted by the Action Teams and Standing Committees are circulated to the National Committees for voting. Publication as an International Standard requires approval by at least 50% of IDF National Committees casting a vote.

Attention is drawn to the possibility that some of the elements of this document may be the subject of patent rights. IDF shall not be held responsible for identifying any or all such patent rights.

ISO 9233-2|IDF 140-2 was prepared by the International Dairy Federation (IDF) and Technical Committee ISO/TC 34, *Food products*, Subcommittee SC 5, *Milk and milk products* and is being published jointly by IDF and ISO.

All work was carried out by the Joint ISO-IDF Action Team on *Selected food additives and vitamins* of the Standing Committee on *Analytical methods for additives and contaminants* under the aegis of its project leader, Mr. M. Carl (DE).

This first edition of ISO 9233-2|IDF 140-2, together with ISO 9233-1|IDF 140-1, cancels and replaces the first edition of IDF 140A:1992, which has been technically revised.

ISO 9233|IDF 140 consists of the following parts, under the general title *Cheese, cheese rind and processed cheese — Determination of natamycin content*:

- *Part 1: Molecular absorption spectrometric method for cheese rind*
- *Part 2: High-performance liquid chromatographic method for cheese, cheese rind and processed cheese*

Cheese, cheese rind and processed cheese — Determination of natamycin content —

Part 2: High-performance liquid chromatographic method for cheese, cheese rind and processed cheese

1 Scope

This part of ISO 9233|IDF 140 specifies a method for the determination of natamycin mass fraction in cheese, cheese rind and processed cheese of above 0,5 mg/kg and of the surface-area-related natamycin mass in cheese rind of above 0,03 mg/dm².

2 Terms and definitions

For the purposes of this document, the following terms and definitions apply.

2.1

natamycin content

mass fraction of substances determined by the procedure specified in this part of ISO 9233|IDF 140

NOTE The natamycin content is expressed in milligrams per kilogram.

2.2

surface-area-related natamycin mass in cheese rind

surface-area-related mass of substances determined by the procedure specified in this part of ISO 9233|IDF 140

NOTE The surface-area-related natamycin mass is expressed in milligrams of natamycin per square decimetre of cheese rind.

2.3

cheese rind

outer layer of the cheese of thickness 5 mm, excluding the coating layer, if present.

3 Principle

A known quantity of sample is extracted with methanol. The extract is diluted with water followed by cooling to between –15 °C and –20 °C to precipitate most of the fat, followed by filtration. The natamycin content or surface-area-related natamycin mass is determined in the filtrate (after concentration, if necessary) by high-performance liquid chromatography (HPLC).

4 Reagents

Use only reagents of recognized analytical grade, unless otherwise specified, and only distilled or demineralized water or water of equivalent purity.

4.1 Methanol (CH₃OH).

4.2 Methanol, aqueous solution.

Mix 2 volumes of methanol (4.1) with 1 volume of water.

4.3 Natamycin standard solutions.

4.3.1 Natamycin standard stock solution, of concentration 500 mg/l.

Immediately before use, dissolve in methanol (4.1) a quantity of a natamycin preparation of known natamycin content, corresponding to 50 mg of pure natamycin (C₃₃H₄₇NO₁₃), in a 100 ml one-mark volumetric flask (5.1). Make up to the mark with water and mix.

4.3.2 Natamycin standard working solution, of concentration 5 mg/l.

Pipette 5,0 ml of the natamycin standard stock solution (4.3.1) in a 50 ml one-mark volumetric flask (5.1). Dilute to the mark with aqueous methanol (4.2) and mix.

Pipette 5,0 ml of the thus diluted solution into another 50 ml one-mark volumetric flask (5.1). Dilute to the mark with aqueous methanol (4.2) and mix. The concentration of this natamycin standard working solution is 5 µg/ml.

This concentration shall be close to that of the test solution measured in 8.3.3. Adjust the standard working dilution by pipetting and diluting another quantity, if required.

4.4 Acetic acid (CH₃CO₂H), glacial.

5 Apparatus

Usual laboratory equipment and, in particular, the following.

5.1 One-mark volumetric flasks, of capacities 50 ml and 100 ml.

5.2 Slicer or similar apparatus, capable of cutting cheese portions of thickness 5 mm and of width about 30 mm (Figure A.1 shows an example).

5.3 Fine slicer, capable of cutting thin cheese slices of maximum thickness 1 mm (Figure A.2 shows an example).

5.4 Grinder or blender.

5.5 Sharp knife, capable of cutting cheese slices into small pieces.

5.6 Magnetic stirrer or shaking machine.

5.7 Conical flasks, of capacities 100 ml and 200 ml, made of coloured glass and fitted with ground-glass stoppers.

5.8 Syringes, disposable, of capacity 10 ml.

- 5.9 Membrane microfilters**, of pore size 0,20 µm and 0,45 µm, resistant to attack by alcoholic solutions.
- 5.10 Folded paper filters**, fast speed, of diameter 150 mm. [e.g. S and S, No. 595 1/2¹].
- 5.11 Funnel**, of diameter approximately 70 mm.
- 5.12 Freezer**, capable of freezing at a temperature of between –15 °C and –20 °C.
- 5.13 Extraction cartridges**, to concentrate the filtered extract, if necessary [e.g. Sep-pack C18¹) or Waters No. 51910¹].
- 5.14 Liquid chromatograph**, with UV detector, capable of measuring at 303 nm and equipped with a recorder and/or integrator.
- 5.15 Analytical column**, of length 150 mm, of internal diameter 4,6 mm, type C8, having a particle size of 5 µm [e.g. Lichrosorb RP8¹].
- 5.16 Guard column**, of length 100 mm, of internal diameter 2,1 mm, type C8, having a particle size of 30 µm to 40 µm [e.g. Perisorb RP8¹].
- 5.17 Sample jar**, of suitable capacity.

6 Sampling

A representative sample should have been sent to the laboratory. It should not have been damaged or changed during transport or storage.

Sampling is not part of the method specified in this part of ISO 9233|IDF 140. A recommended sampling method is given in ISO 707|IDF 50.

The laboratory sample shall be a whole cheese, or a segment of a cheese representative of the whole.

7 Preparation of test sample

7.1 Cheese rind

If necessary, cut the test sample into sectors or smaller portions so that the width of the cheese rind is not more than about 30 mm. Using the slicer (5.2), remove the whole rind from all obtained sectors or portions by slicing off a maximum thickness of 5 mm.

From the rind obtained, cut, using a sharp knife (5.5), a rectangular piece of area between 2 dm² and 4 dm². Determine its surface area, in square decimetres, and its mass, in kilograms.

Grind (5.4) carefully the whole rind, including the weighed and measured piece, and mix thoroughly. Immediately transfer a quantity of the sample thus prepared to a sample jar (5.17).

After preparing each test sample, clean all tools that have been in contact with the sample with hot water and then with methanol (4.1). Dry all tools thoroughly, e.g. by using a stream of compressed air.

1) Example of a suitable product available commercially. This information is given for the convenience of users of this part of ISO 9233|IDF 140 and does not constitute an endorsement by ISO or by IDF of this product.

7.2 Cheese interior and processed cheese

After removing the rind (7.1), use the fine slicer (5.3) to remove a slice of maximum thickness 1 mm from the whole of the outer section of the test sample.

Cut all sample slices into small pieces of about 50 mm² and mix thoroughly. Immediately transfer a quantity of the sample thus prepared to a sample jar (5.17).

After preparing each test sample, clean all tools that have been in contact with the test sample with hot water and then with methanol (4.1). Dry all tools thoroughly, e.g. by using a stream of compressed air.

8 Procedure

8.1 Test portion

8.1.1 Cheese rind

Weigh, to the nearest 10 mg, approximately 10,00 g of test sample (7.1) into a 200 ml conical flask (5.7).

8.1.2 Cheese interior and processed cheese

Weigh, to the nearest 10 mg, approximately 5,00 g of test sample (7.2) into a 100 ml conical flask (5.7).

8.2 Preparation of test solution

8.2.1 Cheese rind

8.2.1.1 Initial steps

Add 100 ml of methanol (4.1) to the test portion in the conical flask (8.1.1). Stir the contents of the conical flask for 90 min with a magnetic stirrer (5.6) or shake for 90 min in a shaking machine (5.6).

Add 50 ml water. Immediately place the conical flask in the freezer (5.12) for about 60 min.

8.2.1.2 Filtration

Filter the cold extract through a folded filter paper (5.10) while discarding the first 5 ml of filtrate. The filtration should be carried out while the suspension is still cold to avoid dissolution of the fat and consequently turbid filtrates.

Bring the filtrate to room temperature. Take a portion of the filtrate in a syringe (5.8). Filter through a membrane microfilter of pore size 0,45 µm (5.9) and then through a membrane microfilter of pore size 0,20 µm (5.9).

The minimum amount of test solution (filtrate) required is 20 µl per injection for direct chromatographic measurement (8.3.4), and 25 ml or 50 ml for measurement at 5 or 10 times concentration (8.3.5), respectively.

8.2.2 Cheese interior and processed cheese

8.2.2.1 Initial steps

Use a measuring cylinder to add 50 ml of methanol (4.1) to the test portion in the conical flask (8.1.2). Stir the contents of the conical flask for 90 min with a magnetic stirrer (5.6) or shake for 90 min in a shaking machine (5.6).

Use a measuring cylinder to add 25 ml of water. Immediately place the conical flask in the freezer (5.12) for about 60 min.

8.2.2.2 Filtration

Filter the solution as described in 8.2.1.2.

8.3 Determination

8.3.1 Determination and detection limits

The laboratory applying the method shall establish the limits of detection and determination under its own instrumental conditions using recognized calculation methods to verify that natamycin can be determined down to levels of 0,5 mg/kg and 0,03 mg/dm².

8.3.2 Adjustment of the liquid chromatograph (5.14)

The following chromatographic conditions are recommended:

Mobile phase:	Methanol (4.1):water:acetic acid (4.4) — 12:8:1 (parts by volume)
Flow:	1 ml/min
Detector set:	303 nm, 0,005 absorbance units, full scale
Recorder:	10 mV
Theoretical (typical) plate count:	1 500 minimum

When a column other than that given as an example (5.15) is used, adjust the methanol:water ratio. The relative amount of acetic acid (4.4) to methanol specified, however, is essential to keep the absorbance maximum at 303 nm.

Before each series of samples, a standard with a known natamycin content shall be injected to determine the retention time and to check the calibration graph (8.3.3).

Because natamycin is unstable in aqueous methanol, carry out the measurement as rapidly as possible.

8.3.3 Calibration graph

Pipette 1 ml, 2 ml, 4 ml, 6 ml and 8 ml, respectively, of natamycin standard working solution (4.3.2) into a series of 50 ml one-mark volumetric flasks (5.1). Make up to the mark with aqueous methanol (4.2) and mix.

The calibration solutions thus obtained contain 0,1 µg/ml, 0,2 µg/ml, 0,4 µg/ml, 0,6 µg/ml, and 0,8 µg/ml of natamycin respectively. Inject, in turn, 20 µl of each standard solution on to the column. Determine the area or height of the peak obtained.

Plot the peak area or peak height obtained for each solution on the ordinate against the natamycin concentration, in micrograms per millilitre, on the abscissa. A specimen HPL chromatogram of a standard solution is shown in Figure A.3.

8.3.4 Test solution

Inject 20 µl of the test solution (8.2.1.2 or 8.2.2.2). Measure the area or the height of the peak having the same retention time as the natamycin calibration solutions.

Carry out the measurement as rapidly as possible.

If the peak area or peak height of the test solution is so low that interpolation on the calibration graph is impossible or almost impossible, but determination is nevertheless required, proceed in accordance with 8.3.5.

Examples of HPL chromatograms of test solutions are shown in Figure A.4.

NOTE The presence of spices, particularly pepper, in the cheese can interfere with the determination in that a peak may be produced in the chromatogram with the same retention time as that corresponding to natamycin. Separation of the two peaks can be achieved by means of gradient elution or by the isocratic use of the alternative mobile phase methanol (4.1):phosphate buffer, pH 4,5 at 11:9 parts by volume. The phosphate solution for the buffer solution can be prepared by dissolving 3,026 g of potassium dihydrogenphosphate in 1 l of water.

8.3.5 Low natamycin content

8.3.5.1 Concentration

Decide whether a concentration of about 5 times or about 10 times is desired. Base that decision on the result obtained in 8.3.4 and on the required limit of determination.

Then pipette 25 ml or 50 ml (for concentration times 5 or times 10, respectively) of test solution (8.2.1.2) into a beaker. Add, depending the concentration desired, 50 ml or 100 ml of water, respectively, and mix.

Activate an extraction cartridge (5.13) by using 3 ml to 5 ml of methanol (4.1). Then wash with 10 ml of water.

Pass the diluted test solution through the cartridge at a speed of 3 ml/min to 5 ml/min with the aid of a syringe (5.8). Rinse the cartridge with 10 ml of water with the aid of a syringe (5.8). Elute the natamycin with 3 ml of methanol (4.1) with the aid of a syringe (5.8).

8.3.5.2 High performance liquid chromatographic measurement

Dilute the eluate (8.3.5.1) to 5 ml with methanol (4.1).

Proceed as in 8.3.4.

9 Calculation and expression of results

9.1 Calculation of natamycin mass fraction

The mass of natamycin in the injected aliquot portion of the test solution can be found by interpolation on the calibration graph (8.3.3).

Calculate the natamycin content as a mass fraction, w , in milligrams per kilogram, in the test sample by using Equation (1):

$$w = \frac{c_n \times V}{m} \quad (1)$$

where

c_n is the concentration, in micrograms per millilitre, of natamycin in the test solution (8.2.1.2 or 8.2.2.2);

m is the mass, in grams, of the test portion (8.1.1 or 8.1.2);

V is the total volume, in millilitres, of the test solution (8.2.1.1 or 8.2.2.1).

NOTE When the test solution derives from cheese sampled from under the rind, w represents the natamycin content resulting from migration into the cheese.

9.2 Calculation of surface-area-related natamycin mass

The surface-area-related natamycin mass, $m_{A,n}$, in milligrams per square decimetre, is calculated by using Equation (2):

$$m_{A,n} = w_r \times \frac{m}{A} \quad (2)$$

where

A is the area, in square decimetres, of the weighed piece of the cheese rind test sample (7.1);

m is the mass, in kilograms, of the weighed piece of the cheese rind test sample (7.1);

w_r is the natamycin mass fraction, in milligrams per kilogram, of the cheese rind test sample (7.1).

9.3 Correction of results

If the filtered extract has been concentrated as in 8.3.5, correct the test results obtained for w (9.1) and $m_{A,n}$ (9.2) as follows:

- a) for approximately 5 times concentration, divide the result obtained by 5; and
- b) for approximately 10 times concentration, divide the result obtained by 10.

If determination in duplicate is required, and provided that the requirements for repeatability are satisfied, take as the final natamycin content of the test sample the arithmetic mean of two determinations obtained as specified in Clause 10, rounded to the first decimal place.

9.4 Expression of results

Express the test results to one decimal place.

10 Precision

10.1 Interlaboratory tests

The values for repeatability and reproducibility have been derived from the results of an interlaboratory test in accordance with ISO 5725:1986^[2] (for results, see Reference [4]).

10.2 Repeatability

The absolute difference between two independent single test results, obtained using the same method on identical test material in the same laboratory by the same operator using the same equipment within a short interval of time, will in not more than 5 % of cases be greater than the values indicated in Table B.1.

10.3 Reproducibility

The absolute difference between two single test results, obtained using the same method on identical test material in different laboratories with different operators using different equipment, will in not more than 5 % of cases be greater than the values indicated in Table B.1.

11 Test report

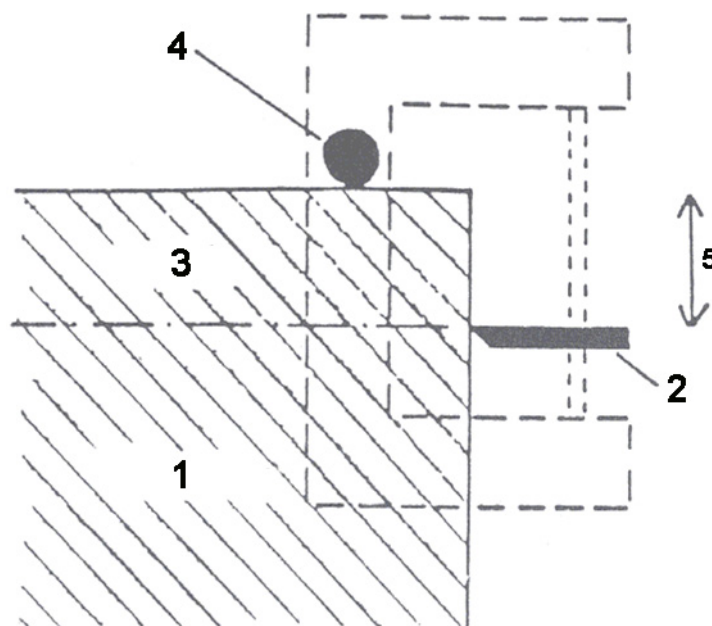
The test report shall specify:

- a) all information necessary for the complete identification of the sample;
- b) the sampling method used, if known;
- c) the test method used, with reference to this part of ISO 9233|IDF 140;
- d) all operational details not specified in this part of ISO 9233|IDF 140, or regarded as optional, together with details of any incidents which may have influenced the test result(s);
- e) the test result(s) obtained, and, if the repeatability has been checked, the final quoted result obtained.

Annex A (informative)

Examples

Dimensions in millimetres



Key

- 1 cheese
- 2 knife
- 3 rind
- 4 roller

Figure A.1 — Example of a slicer for cutting portions of cheese rind 5 mm thick (5.2)

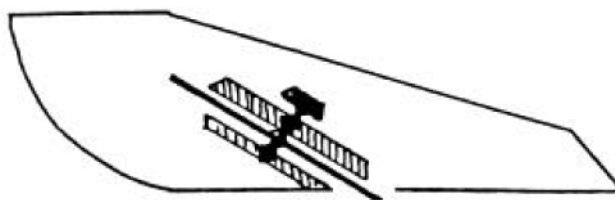


Figure A.2 — Example of a fine slicer for cutting slices of cheese of maximum thickness 1 mm (5.3)



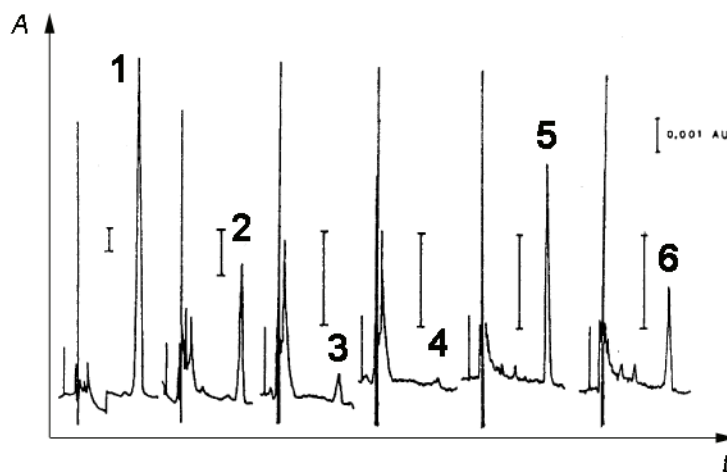
Key

A absorbance

t time

AU absorbance unit

Figure A.3 — A specimen HPL chromatogram of a standard solution containing 0,5 µg/ml of natamycin



Key

A absorbance

t time

AU absorbance unit

- 1 cheese rind, natamycin mass fraction 61 mg/kg
- 2 cheese rind, natamycin mass fraction 15 mg/kg
- 3 cheese, natamycin mass fraction 1,7 mg/kg
- 4 cheese, natamycin mass fraction 0,3 mg/kg
- 5 as 3, after concentration times 5
- 6 as 4, after concentration times 10

Figure A.4 — Examples of HPL chromatograms of various test solutions

Annex B (informative)

Results of interlaboratory trial

The results were obtained in accordance with ISO 5725:1986 by a collaborative study held in 1984 by 36 laboratories using eight samples.

The values in milligrams per square decimetre were calculated from those in milligrams per kilogram for cheese rind with a thickness of 5 mm and a density of 1,3 g/cm³.

Table B.1 — Precision data

Natamycin		Coefficient of variation of repeatability	Coefficient of variation of reproducibility	Relative repeatability	Relative reproducibility
Surface-area-related mass	Mass fraction				
mg/dm ²	mg/kg	CV(<i>r</i>)	CV(<i>R</i>)	$r_{rel} =$ $2,83 \times CV(r)$	$R_{rel} =$ $2,83 \times CV(R)$
		%	%	%	%
4 ^a	60 ^a	9,3	20,6	26	60
1 ^a	15 ^a	7,1	25,6	20	70
0,08 ^b	1,3 ^b	23,4	37	65	105
0,02 ^b	0,3 ^b	29	39	80	110
^a Direct determination. ^b Determination after 10 times concentration.					

Bibliography

- [1] ISO 707|IDF 50, *Milk and milk products — Guidance on sampling*
- [2] ISO 5725:1986, *Precision of test methods — Determination of repeatability and reproducibility for a standard test method by inter-laboratory tests*
- [3] DE RUIG, W.G., VAN OOSTROM, J.J., LEENHEER, K. Spectrometric and liquid chromatographic determination of natamycin in cheese and cheese rind. *J. Assoc. Off. Anal. Chem.*, 1987, **70**, pp. 944-8
- [4] DE RUIG, W.G. Determination of natamycin in cheese and cheese rind: Interlaboratory collaborative study. *J. Assoc. Off. Anal. Chem.*, 1987, **70**, pp. 949-54

ISO 9233-2:2007(E)
IDF 140-2:2007(E)

ICS 67.100.30

Price based on 12 pages