

---

---

**Reciprocating internal combustion  
engine driven alternating current  
generating sets —**

**Part 4:  
Controlgear and switchgear**

*Groupes électrogènes à courant alternatif entraînés par moteurs  
alternatifs à combustion interne —*

*Partie 4: Appareillage de commande et de coupure*



Reference number  
ISO 8528-4:2005(E)

© ISO 2005

**PDF disclaimer**

This PDF file may contain embedded typefaces. In accordance with Adobe's licensing policy, this file may be printed or viewed but shall not be edited unless the typefaces which are embedded are licensed to and installed on the computer performing the editing. In downloading this file, parties accept therein the responsibility of not infringing Adobe's licensing policy. The ISO Central Secretariat accepts no liability in this area.

Adobe is a trademark of Adobe Systems Incorporated.

Details of the software products used to create this PDF file can be found in the General Info relative to the file; the PDF-creation parameters were optimized for printing. Every care has been taken to ensure that the file is suitable for use by ISO member bodies. In the unlikely event that a problem relating to it is found, please inform the Central Secretariat at the address given below.

© ISO 2005

All rights reserved. Unless otherwise specified, no part of this publication may be reproduced or utilized in any form or by any means, electronic or mechanical, including photocopying and microfilm, without permission in writing from either ISO at the address below or ISO's member body in the country of the requester.

ISO copyright office  
Case postale 56 • CH-1211 Geneva 20  
Tel. + 41 22 749 01 11  
Fax + 41 22 749 09 47  
E-mail [copyright@iso.org](mailto:copyright@iso.org)  
Web [www.iso.org](http://www.iso.org)

Published in Switzerland

# Contents

Page

Foreword .....	iv
<b>1</b> <b>Scope</b> .....	<b>1</b>
<b>2</b> <b>Normative references</b> .....	<b>1</b>
<b>3</b> <b>Other regulations and additional requirements</b> .....	<b>2</b>
<b>4</b> <b>General equipment requirements</b> .....	<b>2</b>
<b>4.1</b> <b>Mounting</b> .....	<b>2</b>
<b>4.2</b> <b>Construction</b> .....	<b>2</b>
<b>4.3</b> <b>Operating voltage</b> .....	<b>2</b>
<b>4.4</b> <b>Rated frequency</b> .....	<b>2</b>
<b>4.5</b> <b>Rated current</b> .....	<b>2</b>
<b>4.6</b> <b>Control circuit voltage</b> .....	<b>3</b>
<b>4.7</b> <b>Starter battery systems</b> .....	<b>3</b>
<b>4.8</b> <b>Environmental conditions</b> .....	<b>3</b>
<b>4.9</b> <b>Enclosure and degree of protection</b> .....	<b>3</b>
<b>5</b> <b>Generating set switchgear</b> .....	<b>4</b>
<b>5.1</b> <b>General</b> .....	<b>4</b>
<b>5.2</b> <b>Load-switching devices</b> .....	<b>5</b>
<b>5.3</b> <b>Fault current ratings</b> .....	<b>5</b>
<b>5.4</b> <b>Cables and interconnections</b> .....	<b>5</b>
<b>5.5</b> <b>Generator protection</b> .....	<b>5</b>
<b>6</b> <b>Control modes</b> .....	<b>6</b>
<b>6.1</b> <b>General</b> .....	<b>6</b>
<b>6.2</b> <b>Hand start/hand stop</b> .....	<b>6</b>
<b>6.3</b> <b>Local electric start/hand stop</b> .....	<b>6</b>
<b>6.4</b> <b>Local electric start/electric stop</b> .....	<b>6</b>
<b>6.5</b> <b>Remote start/electric stop</b> .....	<b>6</b>
<b>6.6</b> <b>Automatic start/automatic stop</b> .....	<b>6</b>
<b>6.7</b> <b>Start on demand</b> .....	<b>6</b>
<b>6.8</b> <b>Standby-to-mains control</b> .....	<b>6</b>
<b>6.9</b> <b>Dual mutual standby control</b> .....	<b>7</b>
<b>6.10</b> <b>Triple mutual standby control</b> .....	<b>7</b>
<b>6.11</b> <b>Dual mutual standby-to-mains control</b> .....	<b>7</b>
<b>6.12</b> <b>Parallel operation</b> .....	<b>8</b>
<b>6.13</b> <b>Means of stopping</b> .....	<b>10</b>
<b>7</b> <b>Generating set monitoring</b> .....	<b>10</b>
<b>7.1</b> <b>General</b> .....	<b>10</b>
<b>7.2</b> <b>Electrical instrumentation</b> .....	<b>10</b>
<b>7.3</b> <b>Electrical protection and supervisory control</b> .....	<b>10</b>
<b>7.4</b> <b>Engine protection system</b> .....	<b>14</b>
<b>7.5</b> <b>Engine instrumentation</b> .....	<b>14</b>
<b>Bibliography</b> .....	<b>18</b>

## Foreword

ISO (the International Organization for Standardization) is a worldwide federation of national standards bodies (ISO member bodies). The work of preparing International Standards is normally carried out through ISO technical committees. Each member body interested in a subject for which a technical committee has been established has the right to be represented on that committee. International organizations, governmental and non-governmental, in liaison with ISO, also take part in the work. ISO collaborates closely with the International Electrotechnical Commission (IEC) on all matters of electrotechnical standardization.

International Standards are drafted in accordance with the rules given in the ISO/IEC Directives, Part 2.

The main task of technical committees is to prepare International Standards. Draft International Standards adopted by the technical committees are circulated to the member bodies for voting. Publication as an International Standard requires approval by at least 75 % of the member bodies casting a vote.

Attention is drawn to the possibility that some of the elements of this document may be the subject of patent rights. ISO shall not be held responsible for identifying any or all such patent rights.

ISO 8528-4 was prepared by Technical Committee ISO/TC 70, *Internal combustion engines*.

This second edition cancels and replaces the first edition (ISO 8528-4:1993), which has been technically revised.

ISO 8528 consists of the following parts, under the general title *Reciprocating internal combustion engine driven alternating current generating sets*:

- *Part 1: Application, ratings and performance*
- *Part 2: Engines*
- *Part 3: Alternating current generators for generating sets*
- *Part 4: Controlgear and switchgear*
- *Part 5: Generating sets*
- *Part 6: Test methods*
- *Part 7: Technical declarations for specification and design*
- *Part 8: Requirements and tests for low-power generating sets*
- *Part 9: Measurement and evaluation of mechanical vibrations*
- *Part 10: Measurement of airborne noise by the enveloping surface method*
- *Part 11: Rotary uninterruptible power systems — Performance requirements and test methods<sup>1)</sup>*
- *Part 12: Emergency power supplies to safety services*

---

1) Part 11 will be published as ISO/IEC 88528-11.

# Reciprocating internal combustion engine driven alternating current generating sets —

## Part 4: Controlgear and switchgear

### 1 Scope

This part of ISO 8528 specifies the criteria for controlgear and switchgear for generating sets with reciprocating internal combustion engines.

It applies to Alternating Current (a.c.) generating sets driven by Reciprocating Internal Combustion (RIC) engines for land and marine use excluding generating sets used on aircraft or to propel land vehicles and locomotives.

For some specific applications (e.g. essential hospital supplies and high-rise buildings), supplementary requirements may be necessary. The provisions of this part of ISO 8528 should be regarded as a basis for establishing any supplementary requirements.

For generating sets driven by other prime movers (e.g. steam engines), this part of ISO 8528 should be regarded as a basis for establishing these requirements.

### 2 Normative references

The following referenced documents are indispensable for the application of this document. For dated references, only the edition cited applies. For undated references, the latest edition of the referenced document (including any amendments) applies.

ISO 6826, *Reciprocating internal combustion engines — Fire protection*

ISO 8528-1<sup>2)</sup>, *Reciprocating internal combustion engine driven alternating current generating sets — Part 1: Application, ratings and performance*

ISO 8528-5<sup>2)</sup>, *Reciprocating internal combustion engine driven alternating current generating sets — Part 5: Generating sets*

IEC 60034-1, *Rotating electrical machines — Part 1: Rating and performance*

IEC 62271-200, *A.C. metal-enclosed switchgear and controlgear for rated voltages above 1 kV and up to and including 52 kV*

IEC 60439-1, *Low-voltage switchgear and controlgear assemblies — Part 1: Type-tested and partially type-tested assemblies*

IEC 60947-1, *Low-voltage switchgear and controlgear — Part 1: General rules*

---

2) ISO 8528-1 and ISO 8528-5 are under revision.

### 3 Other regulations and additional requirements

For a.c. generating sets used on board ships and offshore installations which have to comply with rules of a classification society, the additional requirements of the classification society shall be observed. The classification society shall be stated by the customer prior to placing the order.

For a.c. generating sets operating in non-classified equipment, any additional requirements are subject to agreement between the manufacturer and customer.

If special requirements from any other regulatory authority (e.g. inspecting and/or legislative authorities) have to be met, the authority name shall be stated by the customer prior to placing the order.

Any additional requirements shall be subject to agreement between the manufacturer and customer.

### 4 General equipment requirements

#### 4.1 Mounting

Switchgear, controlgear and monitoring equipment may be mounted on or off the generator set and in one or more cubicles.

#### 4.2 Construction

The equipment shall be constructed in accordance with the following requirements:

- a) for rated voltages up to 1 kV, IEC 60439-1 applies;
- b) for rated voltages from 1 kV to 52 kV, IEC 62271-200 applies.

#### 4.3 Operating voltage

The definition of operating voltage is given in IEC 60439-1 and IEC 62271-200.

#### 4.4 Rated frequency

The operational frequency of the switchgear and controlgear shall be the same as the rated frequency of the generating set.

The frequency shall lie within the limits specified in the relevant IEC standards for the incorporated components. Unless otherwise stated, the acceptable operating limit values shall be assumed to comply with the requirements of Clause 16 of ISO 8528-5.

#### 4.5 Rated current

The rated current of the switchgear assembly shall be stated, taking into account the ratings of all components of electrical equipment in the main circuit within the assembly, their disposition and application.

This current shall be carried without the temperature rise of any of its parts exceeding the limits specified in IEC 60439-1 and IEC 62271-200.

If the switchgear assembly consists of multiple main circuits, derating shall be carried out, taking into account the maximum sum of the actual currents at any one time.

The voltage variations during operation of the generator shall be taken into account when determining the rated current of the equipment (see 12.3 of IEC 60034-1).

#### 4.6 Control circuit voltage

A voltage of less than 250 V shall be used. The following voltages are recommended:

- a) for alternating current: 48 V, 110 V, 230 V, (250 V)<sup>3)</sup>;
- b) for direct current: 12 V, 24 V, 36 V, 48 V, 110 V, 125 V.

NOTE Limits of control supply variation should be taken into account to ensure correct operation of control circuit devices.

#### 4.7 Starter battery systems

If the engine is to be started electrically, heavy-duty starter batteries of adequate capacity for the duty considered shall be used and allowance made for the ambient temperature at which they are expected to operate.

Partial voltages shall not be taken from the battery unless the battery will be equalized.

If the control circuitry is also connected to the starter battery, then the battery shall have sufficient capacity for reliable operation of the control equipment under all conditions, even when cranking the engine (see 4.6).

For batteries which are always connected in parallel to the consumers, and which are discharged only in case of power failure or peak current demand, a static charger adapted for consumer feeding shall be used.

Such a charging device shall have sufficient output to provide the control system standing load current in addition to the necessary charging current for recharging the battery within an adequate time.

When the RIC engine is equipped with a mechanically driven battery-charging generator, recharging of the battery shall be executed within a reasonable engine running time. When such a battery-charging generator is provided, the static charger may supply the control system with only a standing load current and provide an adequate float charge current.

The charging equipment shall be selected so that no damage is caused to control relays and solenoids connected across the battery by occasional over-voltage during charging.

Starter motor cables shall be dimensioned for a total cable voltage drop, while cranking the engine, not exceeding 8 % of the nominal battery voltage.

#### 4.8 Environmental conditions

Normal service conditions are specified in IEC 60439-1 and IEC 62271-200.

Where there are deviations from the normal service conditions, they shall be complied with or special agreements shall be made between the manufacturer and customer.

The customer shall inform the manufacturer if such exceptional service conditions exist.

In order to establish the ambient air temperature, the heat dissipation of other equipment installed in the same room shall be considered.

#### 4.9 Enclosure and degree of protection

The enclosure shall be determined and may be selected from requirements specified in IEC 60947-1. Degrees of protection of persons against hazardous approach to live parts should be selected from IEC 62271-200.

---

3) Value not specified in IEC 38:1983, IEC standard voltages.

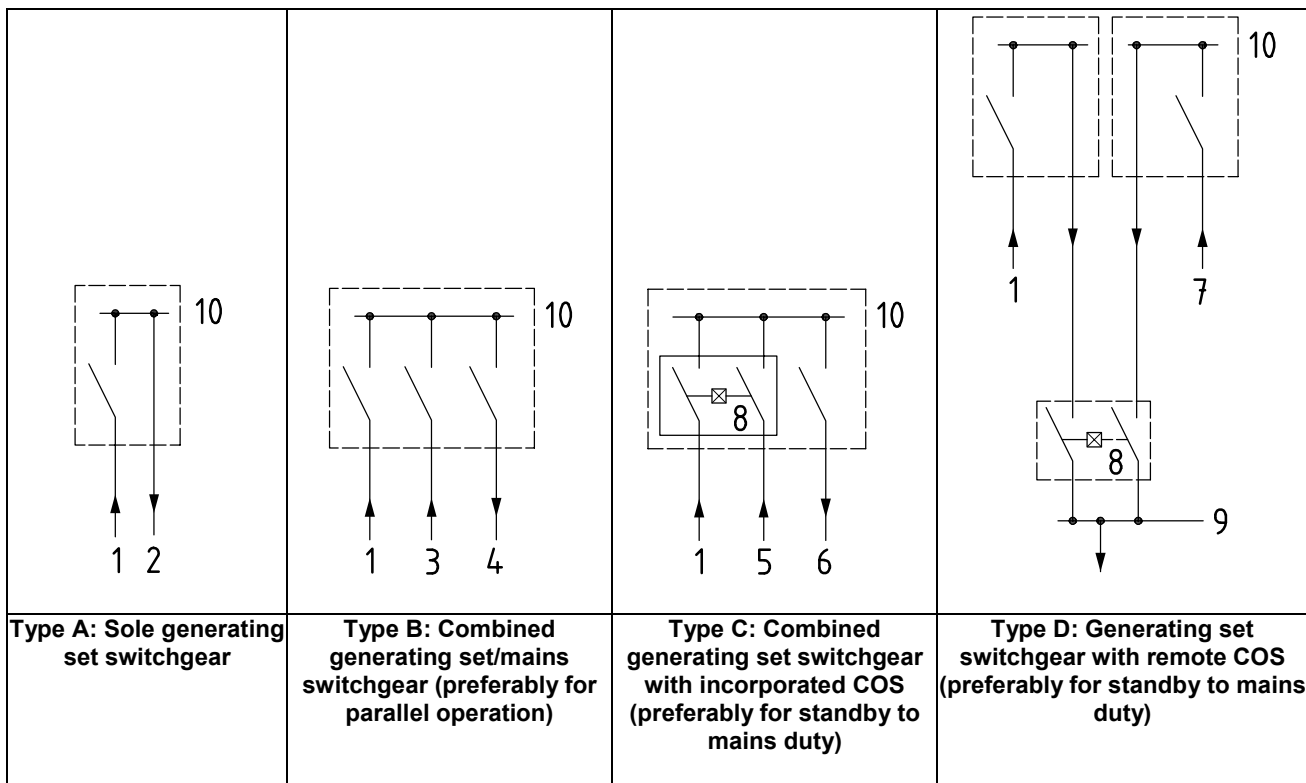
## 5 Generating set switchgear

### 5.1 General

Generating set switchgear includes all main circuit equipment of the generator incoming unit. If required, it may be extended by the mains incoming unit and the associated distribution.

Typical generating set switchgear schemes are shown in Figure 1.

All components incorporated in the switchgear shall be adequately rated to suit the generator set operation specified. They shall also be suitable, if required, for mains operation.



#### Key

- 1 generating set incoming
- 2 generating set outgoing
- 3 generating set and/or mains incoming
- 4 associated distribution
- 5 mains incoming
- 6 associated distribution
- 7 mains supply
- 8 change Over Switching (COS) device (electrically or mechanically interlocked)
- 9 load distribution
- 10 mains supply distribution

**Figure 1 — Generating set switchgear schemes**



## 5.2 Load-switching devices

The current rating of load-switching devices shall be selected for compatibility with the continuous rating of the generator, taking into account the corresponding utilization (service) category demanded (usually AC-1)<sup>4</sup>.

If the AC-1 rating is likely to be exceeded in service, the manufacturer's specified making and/or breaking capacity for the load-switching device should be considered.

The customer shall specify the number of poles required according to the requirements of the local supply authority.

Where the ratings of the mains supply and generating set supply are dissimilar, then the change-over switching device shall be matched to the respective load requirements.

## 5.3 Fault current ratings

During a specified short time, the switchgear and cables shall be capable of withstanding the prospective fault current of the circuit in which they are located.

For a mains incoming unit incorporated in the switchgear, the customer shall give information about the short-circuit conditions at the point of installation (see IEC 60439-1).

Short-circuit protection by a current-limiting switching device (e.g. High Rupture Capacity (HRC) fuse back-up or current-limiting breaker) is permissible where appropriate. When such a current-limiting protection is used, all components and interconnections downstream need only be selected for the rated conditional short-circuit current.

## 5.4 Cables and interconnections

The temperature rise of cables and interconnections shall not exceed the maximum temperature limits of their insulation material. Cables shall not be situated in such a way that transmitted heat dissipation would have a detrimental effect on connected equipment, or on component parts in close proximity.

The voltage drop in interconnections shall meet the requirements for proper functioning for the intended use of the installation.

Terminals shall be so designed that conductors and cables corresponding to the appropriate rated currents can be connected.

Cables and busbars shall be adequately mechanically supported.

## 5.5 Generator protection

As far as possible, a standard protection arrangement should be used (see Table 1 and 7.2).

Consideration shall be given to the operational requirements of the generator when selecting the generator-protection equipment (see IEC 60034-1).

The following information shall be given by the generator manufacturer:

- a) the generator sustained short-circuit current (if any) with the corresponding time limit;
- b) the sub-transient and transient reactances, together with the appropriate time constants; and
- c) the transient voltage performance resulting from any specified step load change.

---

4) See IEC 60947-4-1:2000, *Low-voltage switchgear and controlgear — Part 4-1: Contactors and motor starters — Electromechanical contactors and motor starters*.

## 6 Control modes

### 6.1 General

Control modes are defined by the methods used for initiating the control sequence.

Table 1 gives guidelines on generating set protective and control devices.

### 6.2 Hand start/hand stop

The control of all functions is hand operated. This is used mainly on generating sets rated up to 20 kW and usually does not include protective control.

### 6.3 Local electric start/hand stop

This is an extension of 6.2 incorporating an electric start. This design of generating set is often supplied without protective control.

### 6.4 Local electric start/electric stop

This is an extension of 6.3 incorporating an electric stop. An electric stop is added primarily to facilitate the inclusion of automatic protective control.

### 6.5 Remote start/electric stop

This is essentially a local electric start/electric stop but arranged so that the manually initiated start and stop control is not located on or adjacent to the generating set. In cases where the manually derived signals are initiated from a location where the set is inaudible or signal feed-back is not practical, an automatic protective control shall be used.

### 6.6 Automatic start/automatic stop

With this type of control, starting or stopping the generating set is initiated by independently derived signals without manual intervention.

Typical applications include mains-failure control, load-level control, time-clock control, liquid-level control and thermostatic control.

Precautions shall be included to ensure adequately different switch-point values at ascending and descending levels, temperatures, etc., to minimize too frequent generating set operation.

### 6.7 Start on demand

This is usually applied to a domestic installation where the generating set is the only source of power supply.

When the agreed minimum load is switched on, the generating set starts automatically and continues to run until the connected load is switched off.

### 6.8 Standby-to-mains control

In the event of a complete mains failure or a voltage deviation outside defined limits, this type of control generates a mains failure detection signal which stops the generating set automatically. The system is similarly designed to stop the set and restore mains supply to the load after restoration of the mains to within defined voltage and frequency limits.

In order to achieve this, as a minimum the following facilities shall be incorporated:

- a) mains-failure detection;
- b) engine start/stop sequential control;
- c) protection hold-off timer;
- d) change-over switching device control; and
- e) duty selection switch, MANUAL/AUTO.

The following additional facilities may be incorporated:

- f) start delay;
- g) engine start repeater;
- h) engine warm-up timer;
- i) switch closure delay timer;
- j) mains restoration timer;
- k) engine stop delay at no-load speed;
- l) battery-charger failure detection;
- m) starter pinion repeater;
- n) preheating system;
- o) hours-run counter;
- p) monitoring equipment for special characteristics of the connected network.

### **6.9 Dual mutual standby control**

This is related to the automatic duty cycling of two generating sets, one of which is the duty set and the other the standby to it. Duty change-over is controlled by a time clock, similar initiation or failure of the duty set itself.

The dual mutual standby arrangement is typically used for generating set continuously unattended operation.

### **6.10 Triple mutual standby control**

This is where three generating sets operate in a similar mode to dual mutual standby control and the standby sequence is usually selectable.

### **6.11 Dual mutual standby-to-mains control**

This is the same as dual mutual standby control except that the load is normally supplied by the mains, and the sequence described in 6.9 takes place in the event of a mains failure.

At satisfactory restoration of the mains supply, the load is normally, but not necessarily, returned to the mains and the selected standby sequence restored.

A variation of this arrangement is possible when the generating sets are used in sequence as the prime power supply in a dual mutual standby mode with the mains supply acting as standby.

## 6.12 Parallel operation

### 6.12.1 General

This is a multi-set installation, possibly in conjunction with a mains incomer, that implies parallel operation (see 6.3.2 and 6.3.3 of ISO 8528-1).

Paralleling requires that the incoming generating set be synchronized, and this may be achieved either manually or automatically. Synchronizing involves voltage and frequency adjustment to bring the incoming machine into synchronism and phase with the existing system.

### 6.12.2 Manual operation

The following controls and instrumentation shall be available for manual synchronizing and parallel operation:

- a) generating set circuit breaker;
- b) contactor or load switch;
- c) short-circuit protection;
- d) voltage-adjusting device, if applicable;
- e) frequency-adjusting device;
- f) synchronizing lamps, zero voltmeter or synchroscope to indicate the grade of frequency slip and phase location;

Switching-in has to be carried out so accurately that the "brightness" of lamp is not a sufficiently sensitive guide. Synchronizing lamps should only be an additional equipment. If synchronizing lamps are used, a multiple lamp combination should be connected so as to produce rotary light showing the state of synchronization.

When a zero voltmeter is used, the voltage has to be matched before the frequency.

- g) reverse-power protection;
- h) active-power meter;
- i) ammeter;
- j) voltmeter.

The following controls and instrumentation are recommended:

- k) double frequency meter (incoming set and bus);
- l) double voltmeter (incoming set and bus);
- m) active load-sharing control;
- n) check synchronizing facility;
- o) reactive-power meter;
- p) reactive load-sharing control.

### 6.12.3 Automatic operation

The following controls and instrumentation shall be available for automatic synchronizing and parallel operation:

- a) remote-operated generating set circuit breaker or load switch having a corresponding short closing time;
- b) short-circuit protection;
- c) voltage-adjusting device, if applicable (for reactive load level correction);
- d) frequency-adjusting device (for active load level correction);
- e) automatic active load-sharing control;
- f) reverse-power protection;
- g) automatic synchronizer;
- h) synchronizing mode selection switch, MANUAL/AUTO;

NOTE The use of a synchronizing mode selection switch necessitates the equipment listed in 6.12.2.

- i) ammeter;
- j) voltmeter;
- k) active-power meter.

The following controls and instrumentation are recommended:

- l) double frequency meter (incoming set and bus);
- m) double voltmeter (incoming set and bus);
- n) synchronizing lamps, zero voltmeter or synchroscope to indicate the grade of frequency slip and phase location;

Switching-in has to be carried out so accurately that the "brightness" of lamp is not a sufficiently sensitive guide. Synchronizing lamps should only be an additional equipment. If synchronizing lamps are used, a multiple lamp combination should be connected so as to produce rotary light showing the state of synchronization.

When a zero voltmeter is used, the voltage has to be matched before the frequency.

- o) over-current protection with short-circuit discrimination;
- p) reactive power meter;
- q) automatic reactive load-sharing control;
- r) automatic power factor control.

NOTE Only needed for parallel operation with a commercial power system.

## 6.13 Means of stopping

When a stop system is required, a device shall be provided which, when operated, will interrupt the supply of fuel into the engine combustion chamber. Any such device shall be arranged so as to remain in the "stop" position until the engine has completely ceased to rotate.

NOTE In addition, an air shut-off valve may be required in the event of overspeed.

When activated by an automatic safeguard or protection relay, manual resetting of the stopping device shall be possible.

## 7 Generating set monitoring

### 7.1 General

For the purposes of this International Standard, monitoring means observation of the generating set operation to verify correct functioning through measurement or protection and supervisory control parameters (see Table 1).

### 7.2 Electrical instrumentation

Generating sets shall at least be fitted with a voltmeter and an ammeter. Additional instrumentation for parallel operation is given in 6.12.

Generating sets with outputs of more than 100 kW shall be fitted with a frequency meter and hours-run counter. For three-phase generating sets, voltage and current shall be measured at all phases.

### 7.3 Electrical protection and supervisory control

#### 7.3.1 Over-current protection

Protection against overload only requires disconnection of the generator from the load in the case of necessity.

Protection against short circuit may be provided by a conventional circuit breaker with an over-current release. To ensure, where necessary, short-circuit selectivity (short-circuit discrimination) over-current protection relays or fuses in series in a circuit shall be chosen so that the relay or fuse closest to the fault breaks first.

Coordination of short-circuit protective devices shall be the subject of agreement between the generating set manufacturer and customer.

NOTE See 10.3 and 12.2 of ISO 8528-3 for generator-sustained short-circuit current influence ensuring selectivity of the protective system.

#### 7.3.2 Motor starting

Generating sets supplying induction motors shall handle the motor starting currents.

These starting currents sometimes may represent considerable values compared to the rated current of the generator. In such cases, special consideration of the generator over-current protection relays may be required.

NOTE Technical data published by engine/generator manufacturers generally include motor starting capability in terms of engine output per kilowatt of generator rating and a maximum voltage drop.

### 7.3.3 Underspeed protection

A.c. generators may be susceptible to damage if they are operated below their synchronous speed at normal voltage for extended periods. In such cases, suitable means shall be provided to protect them.

### 7.3.4 Reverse-power protection

All generating sets operating in parallel shall be provided with reverse-power protection. The reverse-power relay shall safely discriminate reverse-acting engine load torque so as to trip the generator circuit breaker within a specified time delay.

### 7.3.5 Load protection, load shedding

Generating set operation may, under certain circumstances, result in output characteristics of voltage and/or frequency unacceptable to certain items of equipment which form part of the electrical load. The customer shall specify such limits and shall give information about the necessary over/under-voltage and over/under-frequency protection required.

In case of overloading, a preferential tripping system shall be included so that, in case of emergency, loads are shed in order to maintain the supply within the desired tolerances. The system shall shed the least-essential loads first.

### 7.3.6 Control-circuit protection

All control and instrumentation equipment shall be adequately protected against over-current.

### 7.3.7 Earth-fault protection

Earth-fault protection may be applied to the generating set or to the system to which it is connected.

When a specific neutral earthing method is used for the system, it has an associated relaying scheme which depends upon the method chosen (see Figure 2).

Earth-fault protection is commonly provided by three relaying schemes detecting the zero-sequence current.

#### a) Residual relaying scheme:

Earth-fault current is detected by sensing the current remaining in the secondary winding of the three-phase summation current transformer. Earth-fault relay in the current transformer neutral connection carries current only when an earth fault occurs (see Figure 3 a).

#### b) Earth sensor scheme:

A window-type core-balance current transformer encircles all phase conductors (cable current transformer). The earth-fault relay detects unbalance and catches the zero-sequence current component. For loads connected line-to-neutral, the core-balance current transformer also encloses the neutral conductor (see Figure 3 b).

#### c) Neutral earth scheme:

Earth-fault current is sensed by an earth-fault protection relay as transformed by a zero-sequence current transformer connected in a resistance-earthed system neutral earthing conductor (see Figure 3 c).

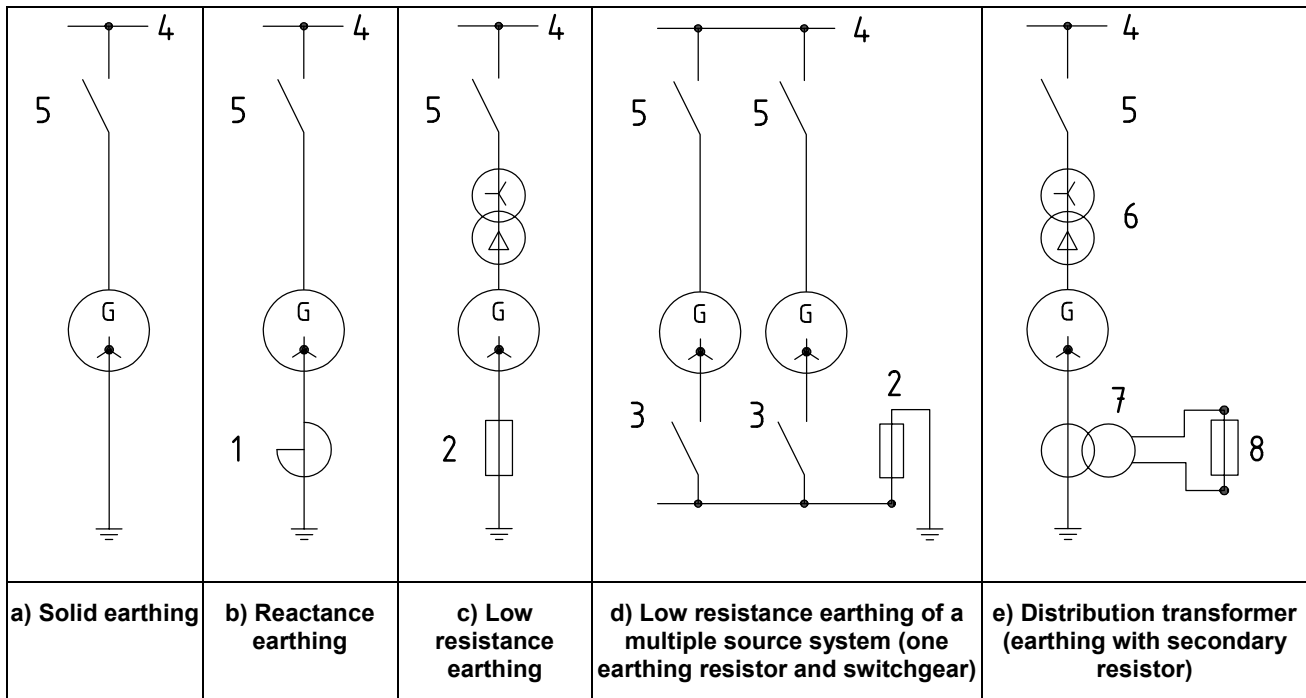
To obtain selectivity, restricted earth-fault protection is usually employed. This form of protection monitors only a specific zone, normally the generator stator windings, up to the points where the detecting current transformers are fitted. Earth faults outside this protected zone are restrained from tripping by directional earth-fault relaying. In the case of low-resistance neutral earthing, relay polarization is done by zero-sequence current and, in the case of high-resistance neutral earthing, by zero-sequence voltage.

Unrestricted earth-fault protection may be provided as for a single independent generating set.

For fixed high-voltage generating sets, it is advisable to have the benefit of earth-fault protection.

Special care shall be taken in the case of single low-voltage generating sets operating independently for temporary supply.

Coordination of earth-fault protective devices may be the subject of an agreement between the public electricity board, the customer and the generating set manufacturer.

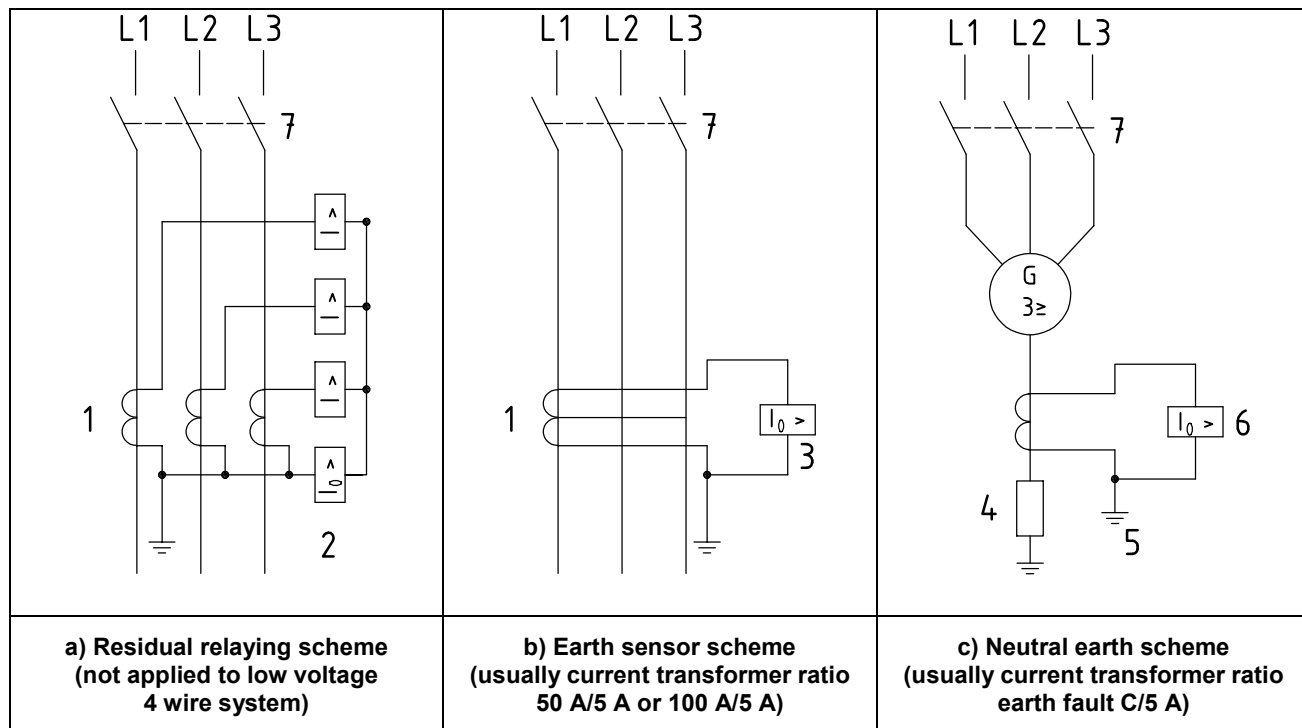


**Key**

- |                     |                            |
|---------------------|----------------------------|
| 1 reactance         | 6 unit step-up transformer |
| 2 earthing resistor | 7 distribution transformer |
| 3 neutral breaker   | 8 secondary resistor       |
| 4 common bus        | G generator                |
| 5 breakers          |                            |

**Figure 2 — Generator neutral earthing methods**





**Key**

- |                          |                             |
|--------------------------|-----------------------------|
| 1 current transformer    | 5 earth fault current       |
| 2 residual current relay | 6 neutral earthing relay    |
| 3 earthing sensor relay  | 7 generator circuit breaker |
| 4 earthing resistor      | G generator                 |

**Figure 3 — Earth-fault protection detecting zero-sequence current**

## 7.4 Engine protection system

Selection and extension of protective and monitoring devices for the RIC engine shall be agreed to by the manufacturer and customer after considering the output and application of the generating set.

The following engine operation parameters shall be monitored (see Table 1):

- a) low lubricating oil pressure;
- b) engine overspeed;
- c) engine coolant temperature;
- d) belt failure (air-cooled engines).

Depending on the application of the generating set, the following additional engine operation parameters may be recommended to be monitored:

- e) coolant level;
- f) exhaust gas temperature;
- g) lubricating oil temperature;
- h) fire protection (in accordance with the requirements of ISO 6826).

Table 1 gives further recommended engine monitoring features.

When the monitored engine parameters exceed the permissible operating limits, one of the following actions shall be initiated:

- i) alarm only (without stopping);
- j) alarm and load disconnection;
- k) alarm and immediate shut-down.

The alarm may be visual and/or audible.

## 7.5 Engine instrumentation

Depending on the application and the rated engine power, instrumentation may be installed by agreement between the manufacturer and customer.

The engine shall be fitted with a gauge to indicate lubricating oil pressure, and may be fitted with a tachometer and gauges for lubricating oil temperature and coolant temperature (see Table 1).

This instrumentation will usually be located at the engine itself.

**NOTE** For special applications or special types of generating set systems, alternative or additional provisions may be necessary.

Table 1 — Generating set monitoring and control device parameters

No.	Parameter	Monitored limit value		Demand grade <sup>a</sup>			Instrumentation	Demand grade <sup>a</sup>		
		high	low	REQ	HRE	REC		REQ	HRE	REC
Generating sets										
1	Engine overspeed <sup>b</sup>	X	—	X			—	—		
2	Failure to start <sup>c,d</sup>	—	—		X		Optical and/or acoustical signal <sup>c</sup>		X	
3	Battery voltage <sup>c,d</sup>	—	X		X		Optical and/or acoustical signal <sup>d</sup>			X
4	Battery charger failure <sup>c,d</sup>	—	—		X		—	—		
5	Fuel level <sup>c,d</sup>	X	X		X		Optical and/or acoustical signal			X
6	Starting air pressure <sup>d,e</sup>	—	X		X		Automatic modulation control for automatically operating generating sets			X
7	Starter pinion repeater <sup>e</sup>	—	—			X	—	—		
8	Protection hold-off timer	—	—	X			—	—		
9	Start delay <sup>c</sup>	—	—		X		—	—		
10	Engine stop delay at no-load speed <sup>c,d,g</sup>	—	—		X		—	—		
11	Generator breaker trip after load decreases <sup>c,h,i</sup>	—	—		X		—	—		
12	Duty selector switch <sup>c</sup>	—	—		X		—	—		
13	Frequency	—	—	—			Frequency meter Double frequency meter in case of synchronizing			X
14	Frequency protection <sup>b</sup>	X	X			X	—	—		
15	Voltage	—	—	—			Voltmeter Where applicable with switch to read 3-phase voltages Double voltmeter in case of synchronizing	X		
16	Voltage protection <sup>b</sup>	X	X		X		—	—		
17	Speed setting <sup>j</sup>	—	—		X		—	—		
18	Voltage setting <sup>j</sup>	—	—		X		—	—		
19	Mains voltage sensing <sup>k</sup>	—	—		X		—	—		
20	Preheating systems	—	—			X	—	—		
21	Operating hours	—	—	—			Hours-run counter			X
22	Current	—	—	—			Ammeter for each phase	X		

Table 1 (continued)

No.	Parameter	Monitored limit value		Demand grade <sup>a</sup>			Instrumentation	Demand grade <sup>a</sup>		
		high	low	REQ	HRE	REC		REQ	HRE	REC
23	Active power	—	—	—			Active power meter; single-phase metering allowed when load exactly balanced	X <sup>i</sup>		X
24	Power factor	—	—	—			Power-factor meter			X
25	Reactive-power	—	—	—			Reactive-power meter			X
26	Synchronization equipment <sup>i,j</sup>	—	—	X			Synchroscope, zero voltmeter or synchronizing lamps	X		
27	Short-circuit protection	X	—	X			—		—	
28	Overload protection	X	—	X			—		—	
29	Time-delayed over-current protection <sup>l</sup>	X	—		X		—		—	
30	Voltage restraint over-current protection <sup>m</sup>	X	—		X		—		—	
31	Directional time over-current protection <sup>b,n</sup>	X	—		X		—		—	
32	Reverse-power protection <sup>j</sup>	—	—		X		—		—	
33	System-disconnection device <sup>h</sup>	—	—		X		—		—	
34	Reactive-current limiting device <sup>h,o</sup>	—	—		X		—		—	
35	System earth-fault protection	—	—			X	—		—	
36	Stator earth-fault protection <sup>n,p</sup>	—	—			X	—		—	
37	Differential-current protection <sup>b,g,n,p</sup>	—	—		X		—		—	
38	Unbalanced-load protection <sup>q</sup>	X	—			X	—		—	
Engine										
39	Speed	—	—			X	Tachometer			X
40	Lubricating oil pressure	—	X	X			Lubricating oil pressure gauge	X		
41	Lubricating oil temperature	—	X			X	Lubricating oil temperature gauge			X
42	Lubricating oil level	—	X			X	—		—	
43	Engine coolant temperature	X	—	X			Coolant temperature gauge		X	
44	Engine coolant level <sup>c</sup>	—	X		X		—		—	
45	Belt failure <sup>r</sup>	—	—	X			—		—	
46	Cooling fan failure	—	—			X	—		—	

Table 1 (continued)

No.	Parameter	Monitored limit value		Demand grade <sup>a</sup>			Instrumentation	Demand grade <sup>a</sup>		
		high	low	REQ	HRE	REC		REQ	HRE	REC
47	Exhaust gas temperature	X	—			X	Exhaust gas temperature gauge			X
48	Starting	—	—			X	Starting counter			X
Generator										
49	Temperature-responsive overload protection <sup>s</sup>	X	—			X	—		—	
50	Rotor earth-fault protection <sup>n,t</sup>	—	—			X	—		—	
51	Loss of field protection <sup>j,n,u</sup>	—	—			X	—		—	
<p><sup>a</sup> REQ: Required. HRE: Highly recommended. REC: Recommended.</p> <p><sup>b</sup> Usually not employed for generating sets below 100 kW.</p> <p><sup>c</sup> For automatically operated generating sets.</p> <p><sup>d</sup> Required for safety services installations.</p> <p><sup>e</sup> Compressed-air-started engines.</p> <p><sup>f</sup> Electrically cranked engines.</p> <p><sup>g</sup> For low-voltage generators of more than 2 MVA.</p> <p><sup>h</sup> For parallel operation together with commercial power system.</p> <p><sup>i</sup> No-break change-over of generating set to mains.</p> <p><sup>j</sup> For parallel operation.</p> <p><sup>k</sup> Standby-to-mains control.</p> <p><sup>l</sup> To obtain selectivity, preferably definite time lag for short-circuit protection; inverse time lag for overload protection.</p> <p><sup>m</sup> When generator supplies insufficient sustained short-circuit current.</p> <p><sup>n</sup> For high-voltage generators.</p> <p><sup>o</sup> Undue long time voltage deviation of commercial power system (&gt; ± 5 %).</p> <p><sup>p</sup> Generator shall be de-excited.</p> <p><sup>q</sup> In case of continuous operation on undue unbalanced load system. Also for open-phase protection.</p> <p><sup>r</sup> For air-cooled engines.</p> <p><sup>s</sup> Usually not employed for high-voltage generators when temperature sensors of thermistor type are embedded in stator windings.</p> <p><sup>t</sup> Usually not used with brushless generators.</p> <p><sup>u</sup> Medium- and low-speed generating sets.</p>										

## Bibliography

- [1] ISO 3046-3:1989, *Reciprocating internal combustion engines — Performance — Part 3: Test measurements*

.....

www.iso.org

---

---

**ICS 27.020; 29.160.40**

Price based on 18 pages