



Published 1992-07-01

INTERNATIONAL ORGANIZATION FOR STANDARDIZATION - МЕЖДУНАРОДНАЯ ОРГАНИЗАЦИЯ ПО СТАНДАРТИЗАЦИИ - ORGANISATION INTERNATIONALE DE NORMALISATION

Modular units for machine tools — Workholding pallets —

Part 2:

Workholding pallets of nominal size greater than 800 mm

TECHNICAL CORRIGENDUM 1

Éléments standards pour machines-outils — Palettes —

Partie 2: Palettes porte-pièce de dimension nominale supérieure à 800 mm

RECTIFICATIF TECHNIQUE 1

Technical corrigendum 1 to International Standard ISO 8526-2 : 1990 was prepared by Technical Committee ISO/TC 39, *Machine tools*, Sub-Committee SC 3, *Modular units for machine tools*.

Page 10

Figure 4

Replace this figure with the following figure 4.

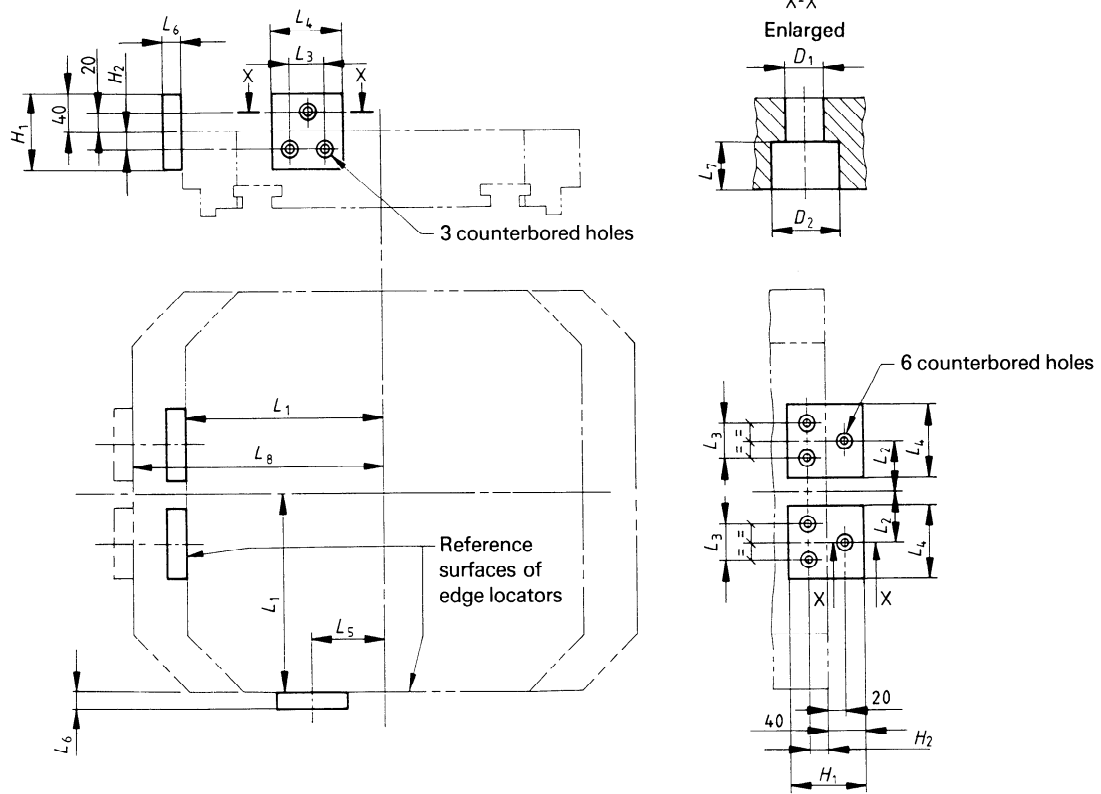


Figure 4 — Details of edge locators (when fitted)

On this new figure, the dimensions 20 mm and 40 mm specified for the two edge locators shown at the lower right replace the former dimensions 18 mm and 36 mm respectively, and hence correspond to the dimensions specified at the upper left.

Page 14

Figure B.1

Replace this figure with the following figure B.1.

Dimensions in millimetres

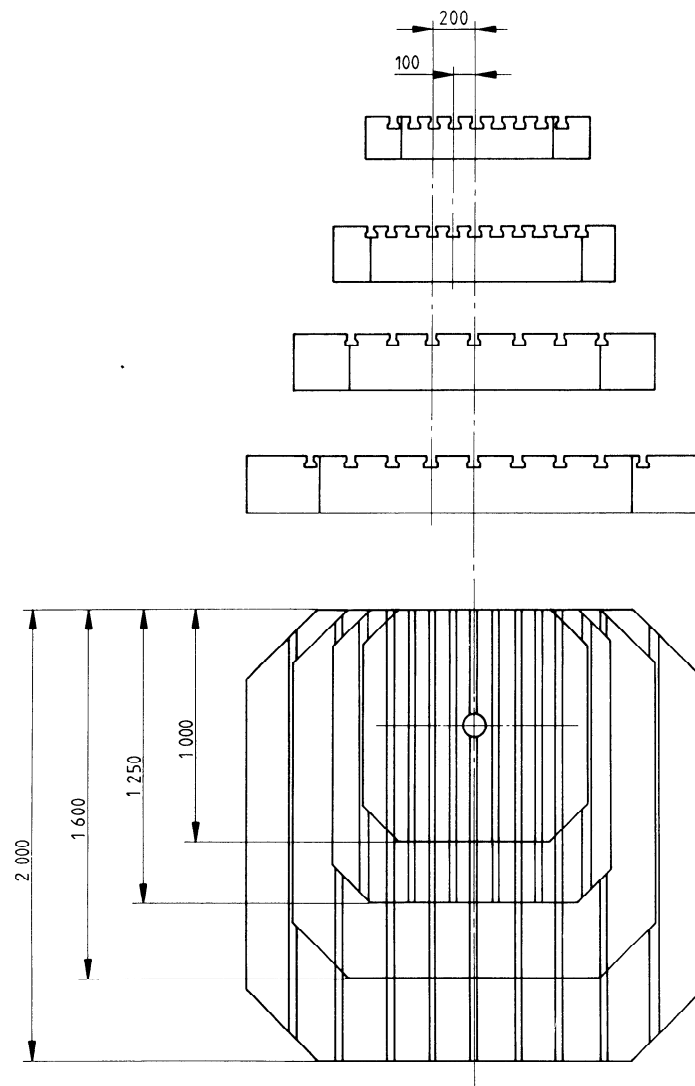


Figure B.1 — Pallets with an arithmetic progression of the T-slot pitches

The new figure shows the T-slots for pallets with nominal dimension 1 250 mm.

This page intentionally left blank