

---

---

**Polymeric materials, cellular, flexible —  
Determination of air flow value at  
constant pressure-drop**

*Matériaux polymères alvéolaires souples — Détermination de l'indice  
d'écoulement d'air à chute de pression constante*



Reference number  
ISO 7231:2010(E)

© ISO 2010

**PDF disclaimer**

This PDF file may contain embedded typefaces. In accordance with Adobe's licensing policy, this file may be printed or viewed but shall not be edited unless the typefaces which are embedded are licensed to and installed on the computer performing the editing. In downloading this file, parties accept therein the responsibility of not infringing Adobe's licensing policy. The ISO Central Secretariat accepts no liability in this area.

Adobe is a trademark of Adobe Systems Incorporated.

Details of the software products used to create this PDF file can be found in the General Info relative to the file; the PDF-creation parameters were optimized for printing. Every care has been taken to ensure that the file is suitable for use by ISO member bodies. In the unlikely event that a problem relating to it is found, please inform the Central Secretariat at the address given below.



**COPYRIGHT PROTECTED DOCUMENT**

© ISO 2010

All rights reserved. Unless otherwise specified, no part of this publication may be reproduced or utilized in any form or by any means, electronic or mechanical, including photocopying and microfilm, without permission in writing from either ISO at the address below or ISO's member body in the country of the requester.

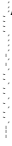
ISO copyright office  
Case postale 56 • CH-1211 Geneva 20  
Tel. + 41 22 749 01 11  
Fax + 41 22 749 09 47  
E-mail [copyright@iso.org](mailto:copyright@iso.org)  
Web [www.iso.org](http://www.iso.org)

Published in Switzerland

# Contents

Page

<b>Foreword</b> .....	<b>iv</b>
<b>1 Scope</b> .....	<b>1</b>
<b>2 Normative references</b> .....	<b>1</b>
<b>3 Terms and definitions</b> .....	<b>1</b>
<b>4 Principle</b> .....	<b>1</b>
<b>5 Method A</b> .....	<b>2</b>
<b>6 Method B</b> .....	<b>5</b>
<b>Annex A (informative) Automatic measurements in method B</b> .....	<b>9</b>



## Foreword

ISO (the International Organization for Standardization) is a worldwide federation of national standards bodies (ISO member bodies). The work of preparing International Standards is normally carried out through ISO technical committees. Each member body interested in a subject for which a technical committee has been established has the right to be represented on that committee. International organizations, governmental and non-governmental, in liaison with ISO, also take part in the work. ISO collaborates closely with the International Electrotechnical Commission (IEC) on all matters of electrotechnical standardization.

International Standards are drafted in accordance with the rules given in the ISO/IEC Directives, Part 2.

The main task of technical committees is to prepare International Standards. Draft International Standards adopted by the technical committees are circulated to the member bodies for voting. Publication as an International Standard requires approval by at least 75 % of the member bodies casting a vote.

Attention is drawn to the possibility that some of the elements of this document may be the subject of patent rights. ISO shall not be held responsible for identifying any or all such patent rights.

ISO 7231 was prepared by Technical Committee ISO/TC 45, *Rubber and rubber products*, Subcommittee SC 4, *Products (other than hoses)*.

This second edition cancels and replaces the first edition (ISO 7231:1984), which has been technically revised.

Major modifications in this revision are:

- a) the inclusion of a warning statement;
- b) the inclusion of a new method (method B) particularly suitable for materials with a low permeability to air;
- c) the inclusion of precision data for method B;
- d) the inclusion of an example showing how a computer-controlled apparatus could be used to carry out method B.

# Polymeric materials, cellular, flexible — Determination of air flow value at constant pressure-drop

**WARNING —** Persons using this International Standard should be familiar with normal laboratory practice. This standard does not purport to address all of the safety problems, if any, associated with its use. It is the responsibility of the user to establish appropriate safety and health practices and to ensure compliance with any national regulatory conditions.

## 1 Scope

This International Standard specifies two methods for determining the air flow value of flexible cellular polymeric materials:

- method A, for conventional types of flexible cellular polymeric material;
- method B, for all types of flexible cellular polymeric material, but especially for materials with a low permeability to air.

NOTE 1 Air flow values can be used to give an indication of the effects of formulation and production variables on the cellular structure.

NOTE 2 In this International Standard, the expression “conventional type of flexible cellular polymeric material” means types which are unsuitable for sealing purposes.

## 2 Normative references

The following referenced documents are indispensable for the application of this document. For dated references, only the edition cited applies. For undated references, the latest edition of the referenced document (including any amendments) applies.

ISO/TR 9272, *Rubber and rubber products — Determination of precision for test method standards*

## 3 Terms and definitions

For the purposes of this document, the following terms and definitions apply.

### 3.1

#### air flow value

volume flow rate required to maintain a constant pressure differential across a flexible foam test piece

## 4 Principle

A specified constant air pressure differential is created across a standard flexible foam specimen. The rate of flow of air required to maintain this pressure differential is the air flow value.

## 5 Method A

### 5.1 Apparatus

#### 5.1.1 General

Diagrams of suitable apparatus are shown in Figure 1 (using an air pressure below atmospheric) and Figure 2 (using an air pressure above atmospheric). The essential parts are described in 5.1.2 to 5.1.5.

#### 5.1.2 Flow-meters

Low-pressure-drop flow-meters with an accuracy of up to  $\pm 2\%$  are required for air flow measurements. The actual air flow shall be adjusted by a combination of valve restriction, as shown in Figures 1 and 2, and blower or vacuum pump speed, so that the required pressure difference across the specimen [see 5.4 c)] is maintained constant.

Air flow-meters with at least 250 mm scales are recommended. Flow-meters measuring in the range  $0 \text{ dm}^3/\text{s}$  to  $10 \text{ dm}^3/\text{s}$  will cover a wide variety of cellular polymeric materials.

#### 5.1.3 Manometer

A manometer graduated in the 0 Pa to 250 Pa range and with an accuracy of  $\pm 2\%$  is required. Traps to prevent manometer fluid being drawn into the test chamber by accidental pressure changes shall be provided. A plunger in the fluid reservoir is used to set the zero point after levelling the manometer.

The use of an inclined manometer with 2 Pa graduations is recommended. A level mounted on the manometer should be used to ensure that the proper degree of inclination from the horizontal is maintained.

#### 5.1.4 Air supply or suction equipment

The air supply or suction may be such that positive or negative pressure differences from atmospheric pressure are obtained across the test piece, using compressed air, an exhaust blower or a vacuum pump, etc.

NOTE A particular apparatus can be constructed to use only positive or negative pressure.

#### 5.1.5 Test piece mounting

A chamber of nominal dimensions 140 mm diameter  $\times$  150 mm depth (see Figure 1) or 75 mm diameter  $\times$  1 000 mm length (see Figure 2), incorporating a test piece mounting and fittings for the manometer and exhaust, shall be provided. The test piece cavity shall be  $(50 \pm 0,05) \text{ mm} \times (50 \pm 0,05) \text{ mm} \times (25 \pm 0,05) \text{ mm}$ .

The test piece shall be supported by suitable means, for example by the use of vanes, wires or a perforated support. The support shall provide a minimum open proportion of 70 % of the overall area, evenly distributed over its area (see Figures 1 and 2 for the positioning of the supports). Manometer and exhaust fittings shall be as shown in Figures 1 and 2.

#### 5.1.6 Test chamber operated at below atmospheric pressure

The apparatus, shown in Figure 1, shall be checked for leaks in the following manner:

- a) Seal the test piece mounting cavity with masking tape.
- b) With all the flow-meter valves closed, turn the air supply to approximately one-third of the maximum setting and observe any movement of the manometer. The manometer reading shall not exceed 1 Pa after 30 s.
- c) Open the valve on the lowest-range flow-meter very slightly. The flow shall be essentially zero, as shown by a movement of less than 3 mm of the flow-meter float from its static position.

## 5.2 Test pieces

The test pieces shall normally be in the form of a right parallelepiped of dimensions  $(51,0 \pm 0,3)$  mm  $\times$   $(51,0 \pm 0,3)$  mm  $\times$   $(25,0 \pm 0,3)$  mm. If test pieces of a different thickness are used, the thickness shall be stated in the test report. Any test pieces with length or breadth dimensions outside the required tolerance shall be discarded as they will lead to inaccurate air flow values. The test pieces shall be cut out without deformation of the original cell structure. Three test pieces shall be tested.

NOTE Test pieces both with and without surface skin can be tested by this method, but the results will not be comparable.

## 5.3 Test conditions

Testing shall be carried out under the standard conditions of either  $(23 \pm 2)$  °C and  $(50 \pm 5)$  % relative humidity or  $(27 \pm 2)$  °C and  $(65 \pm 5)$  % relative humidity, unless otherwise specified.

NOTE Since the flow-meter calibration is sensitive to temperature, the results obtained with these two sets of conditions will not necessarily be comparable.

## 5.4 Procedure

The method of measurement shall be as follows:

- a) Place the test piece in the test cavity with any skin on the side exposed to the lower pressure. Make sure that the test piece is free from undue strain and that a good air seal is obtained between the edges of the test piece and the apparatus.
- b) Close the flow-meter valves and switch on the blower or vacuum pump.
- c) Open the high-range flow-meter slowly and adjust the air flow to obtain a pressure differential of  $(125 \pm 1)$  Pa on the manometer.
- d) If this reading is less than 10 % of full scale, close the valve of this flow-meter and open the medium-range flow-meter valve. Repeat this procedure until the correct flow-meter has been selected and the reading obtained.

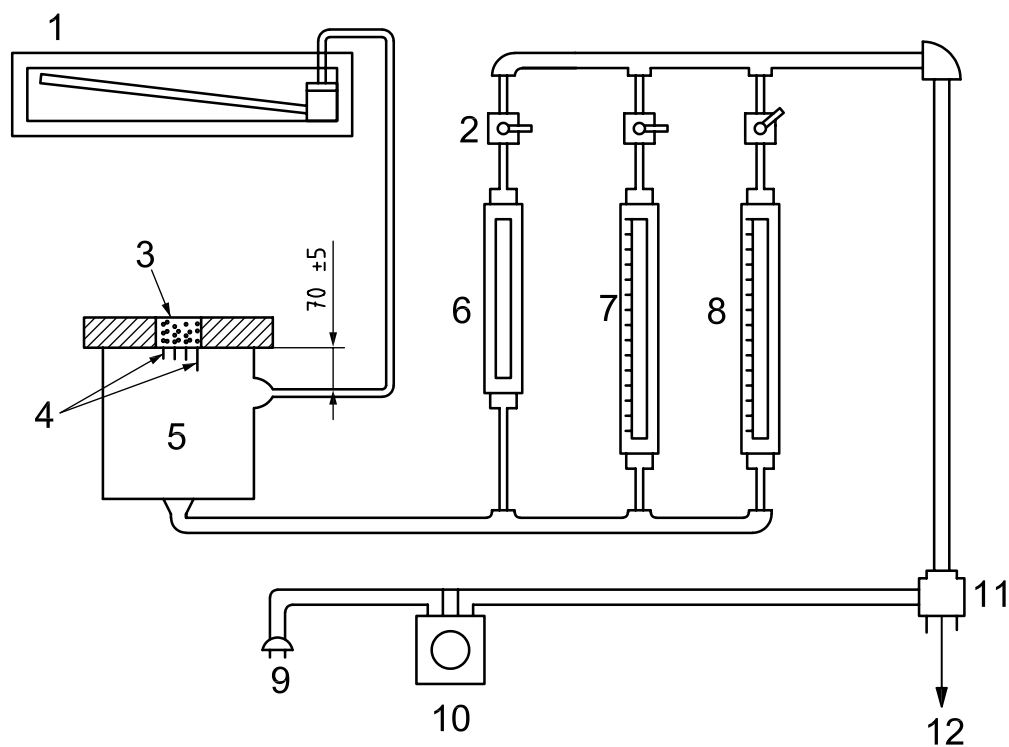
For greater accuracy, it is preferable to use two adjacent flow-meters, holding the higher-range one steady on an appropriate graduation mark and making the adjustment on the lower-range one. In this case, the air flow value is obtained from the sum of the two flow-meter readings after maintaining the pressure differential for 10 s.

- e) Record the reading obtained as described in step d), in cubic decimetres per second, as the air flow value for the specimen.

## 5.5 Test report

The test report shall include the following information:

- a) a reference to this International Standard;
- b) the method used (method A);
- c) all details necessary to identify the material tested;
- d) the individual test results and the mean air flow value;
- e) if test pieces of thickness different from that specified in 5.2 were used, the thickness of the test pieces;
- f) the orientation of the test pieces with respect to the direction of any anisotropy and the presence or absence of any skins;
- g) the test conditions used, i.e. temperature, relative humidity, apparatus type and pressure direction;
- h) the date of the test.



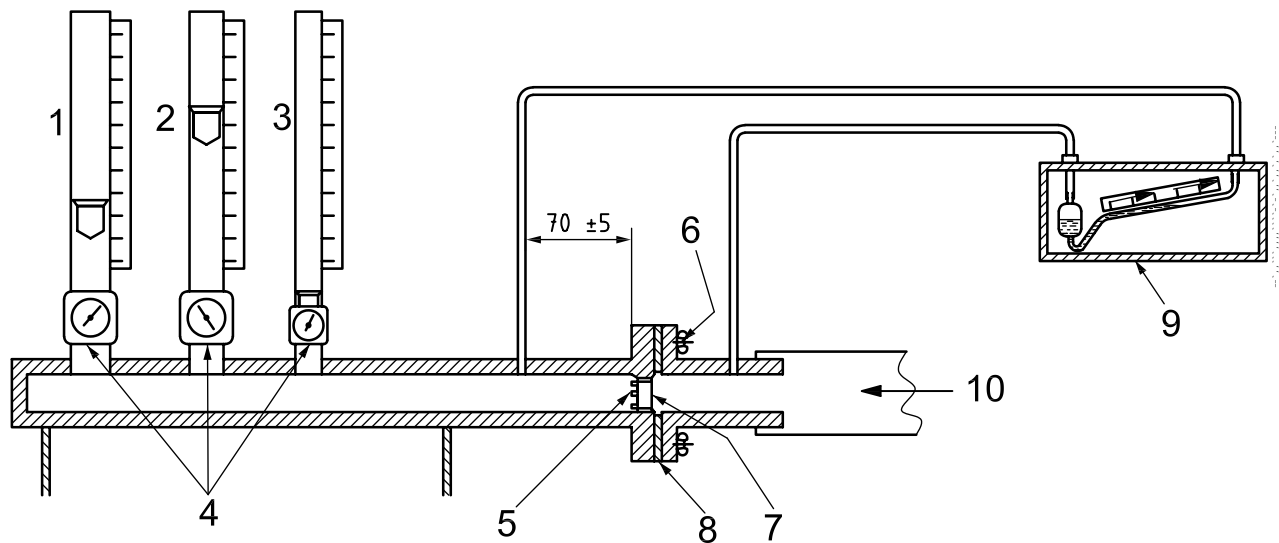
**Key**

- 1 inclined oil manometer
- 2 two-way ball valve
- 3 test piece
- 4 test piece support vanes
- 5 vacuum chamber
- 6 low-range air flow-meter
- 7 medium-range air flow-meter
- 8 high-range air flow-meter
- 9 power supply
- 10 voltage control
- 11 vacuum pump
- 12 exhaust

**Figure 1 — Method A: Air flow apparatus (using air pressure below atmospheric)**



Dimensions in millimetres

**Key**

- 1 high-range air flow-meter
- 2 medium-range air flow-meter
- 3 low-range air flow-meter
- 4 valves
- 5 horizontal steel rods to retain test piece in position
- 6 wing nut
- 7 test piece
- 8 gasket
- 9 inclined manometer
- 10 air supply

**Figure 2 — Method A: Air flow apparatus (using air pressure above atmospheric)**

## 6 Method B

### 6.1 Apparatus

#### 6.1.1 General

An example of the air flow test apparatus is shown in Figure 3. A computer may be connected to the pressure-measurement system for automatic measurement instead of using manometers (see Annex A). The essential parts of the apparatus are as described in 6.1.2 to 6.1.5.

#### 6.1.2 Air orifice

A metal plate with an orifice of a suitable size shall be mounted in the partition in the cylindrical test chamber. Generally, 10 such plates with different sizes of orifice are available, and one of them is chosen according to the air flow value of the test piece.

### 6.1.3 Clamping ring

A metal ring shall be used to hold the test piece on top of the cylinder as shown in Figure 3. It shall have a hole in the centre to allow air to pass through the central uncovered area of the test piece. The diameter of the hole is normally 70 mm, although holes of other diameters may be used, depending on the particular test apparatus.

### 6.1.4 Manometer

Both inclined and vertical manometers are required: they shall be graduated to an accuracy of  $\pm 2$  %.

The inclined-manometer range shall be 0 Pa to 250 Pa (25 mmH<sub>2</sub>O), and 2,0 Pa (0,2 mmH<sub>2</sub>O) graduations are recommended.

The vertical manometer should preferably be capable of measuring from 0 Pa to 3 000 Pa (300 mmH<sub>2</sub>O), and 25 Pa (2,5 mmH<sub>2</sub>O) graduations are recommended.

With both manometers, traps shall be provided as shown in Figure 3 to prevent manometer fluid being drawn into the chamber by accidental pressure changes. A plunger in the trap is used to set the the zero point after the manometer has been set up in the correct position. A level mounted on the manometer shall be used to ensure that this correct position is maintained during the test.

### 6.1.5 Air supply or suction equipment

The apparatus used for method B is designed to operate under negative applied pressure and, typically, contains an integral extractor fan. Alternatively, the test equipment can be connected to a vacuum pump.

## 6.2 Test pieces

Take three test pieces, each 10 mm thick, 220 mm wide and 220 mm long, from the product under test. Place the first test piece under the clamping ring, which ensures a tight seal. If the measurement on a particular test piece has to be repeated, the test piece can be moved and re-clamped in place to expose a different area.

## 6.3 Test conditions

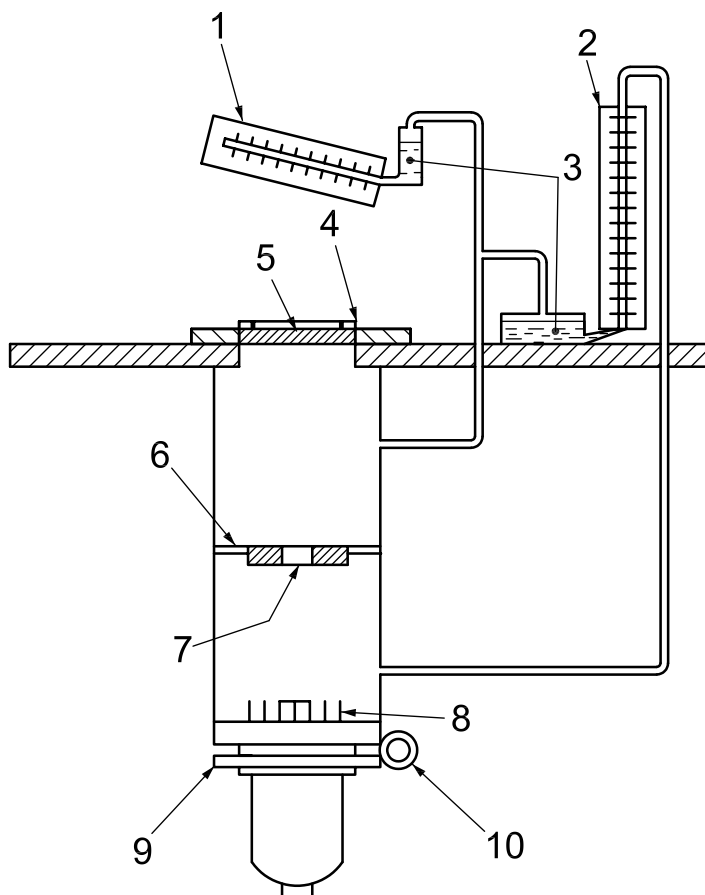
Testing shall be carried out under the standard conditions of either  $(23 \pm 2)$  °C and  $(50 \pm 5)$  % relative humidity or  $(27 \pm 2)$  °C and  $(65 \pm 5)$  % relative humidity, unless otherwise specified.

NOTE Since the flow-meter calibration is sensitive to temperature, the results obtained with these two sets of conditions will not necessarily be comparable.

## 6.4 Procedure

The method of measurement shall be as follows:

- a) Mount the chosen air orifice (6.1.2) in the partition wall.
- b) Mount the test piece under the clamping ring.
- c) Start up the apparatus and adjust the fan/pump speed to give a scale reading on the inclined-manometer scale corresponding to a pressure differential of  $(125 \pm 1)$  Pa.
- d) Record the pressure indicated on the vertical manometer and the size of air orifice used. The resultant air flow value, in millilitres per square centimetre per second (ml/cm<sup>2</sup>/s), is obtained from the conversion chart specific to the test apparatus.
- e) Express the air flow value as the average of those obtained for the three test pieces, rounded to one decimal place.



### Key

- 1 inclined manometer
- 2 vertical manometer
- 3 traps for manometer fluid
- 4 clamping ring
- 5 test piece
- 6 partition
- 7 air orifice
- 8 air baffles
- 9 extractor fan
- 10 air outlet

**Figure 3 — Method B: Example of a suitable air flow apparatus**

## 6.5 Precision

### 6.5.1 General

The precision of method B was determined in accordance with ISO/TR 9272. The precision results as determined by this ITP (interlaboratory test programme) should not be used for acceptance or rejection of any group of materials without documentation that the results of this precision evaluation are actually applicable to the particular group of materials tested.

The ITP was conducted in 2005. Six laboratories participated, using two different types of flexible polyurethane, viz No. 1 (conventional ether foam) and No. 2 (conventional ester foam), and testing three test pieces of each type.

6.5.2 Results

The precision results for the two types of foam are given in Table 1.

*Repeatability* — The repeatability, or local domain precision, for this test method has been established, for each measurement parameter listed in Table 1, as the values given in the table. Test results (obtained by the proper use of the method) that differ by more than the tabulated values of  $r$ , in measurement units, or  $(r)$ , in percent, shall be considered as suspect, i.e. to have come from different populations. Such a situation should suggest that some appropriate investigative action be taken.

*Reproducibility* — The reproducibility, or global domain precision, for this test method has been established, for each measurement parameter listed in Table 1, as the values given in the table. The test results obtained in different laboratories (by the proper use of the method) that differ by more than the tabulated values of  $R$ , in measurement units, or  $(R)$ , in percent, shall be considered as suspect, i.e. to have come from different populations. Such a situation should suggest that some appropriate investigative action be taken.

Table 1 — Precision results

Type of foam	Mean value ml/cm <sup>2</sup> /s	Within-laboratory			Between laboratories		
		$s_r$	$r$	$(r)$	$s_R$	$R$	$(R)$
No. 1	99,50	9,906	28,035	28,176	13,623	38,55	38,744
No. 2	108,780	9,668	27,360	25,152	15,113	42,77	39,318

6.6 Test report

The test report shall include the following information:

- a) a reference to this International Standard;
- b) the method used (method B);
- c) all details necessary to identify the material tested;
- d) the individual test results and the mean air flow value;
- e) the orientation of the test pieces with respect to the direction of any anisotropy and the presence or absence of any skins;
- f) the test conditions used, i.e. temperature, relative humidity and apparatus type;
- g) the date of the test.

## Annex A (informative)

### Automatic measurements in method B

#### A.1 General

By equipping the test apparatus with computer-controlled systems, the test is made easier and less time-consuming and the possibility of operator error is reduced. Automatic measurement is helpful in both quality control and research work, and can lead to more precise results. It is therefore useful to include a typical computer-controlled procedure (see A.3).

The results obtained by automatic measurement as described in this annex generally correlate very well with those obtained by manual measurement, as the concept is the same. However, it is recommended that comparison tests be run to verify the correlation when the automatic-measurement technique is introduced for the first time.

#### A.2 Apparatus

##### A.2.1 General

An example of a suitable apparatus is shown in schematic form in Figure A.1. The apparatus is connected to a computer which controls the extractor fan, maintains the pressure at the value set and displays the measured value of the air flow through the test piece on a screen.

##### A.2.2 Test piece mounting plate and clamping ring

These are the main parts of the test piece holder and both have a circular hole of defined area at the centre. The cross-sectional area of the hole is normally  $38 \text{ cm}^2$  (corresponding to a diameter of 70 mm), although holes of other diameters can be used, depending on the particular test requirements. The clamping ring has an outer diameter of 110 mm and inner diameter of 70 mm. A locking system holds the test piece on the mounting plate firmly enough to ensure an airtight seal around the hole, but not so firmly that it damages the test piece. The outer diameter of the mounting plate should be larger than that of the clamping ring. Both of the plates should be thick enough to avoid deformation caused by the locking system.

##### A.2.3 Air orifice

In the computer-controlled apparatus, the air orifice plate mounted in the partition in the test chamber is designed with eight orifices of different sizes. Computer control of the plate enables it to be rotated to select a single orifice of the diameter desired for the test.

##### A.2.4 Pressure gauge

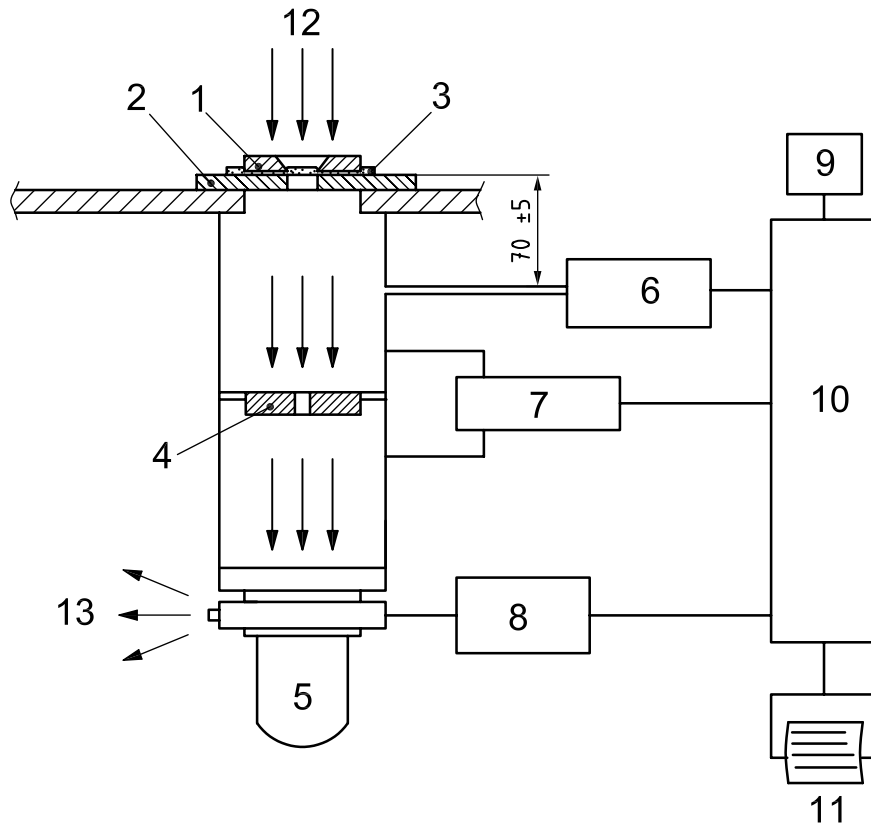
The pressure gauge inlet is located  $(70 \pm 5)$  mm below the upper surface of the test piece mounting plate.

##### A.2.5 Flow-meter

The air flow rate measured by the flow-meter is displayed on the computer screen.

##### A.2.6 Extractor fan

The extractor fan is controlled by computer to maintain the underpressure in the test chamber at the required value.



**Key**

- 1 clamping ring
- 2 test piece mounting plate
- 3 test piece
- 4 air orifice plate
- 5 extractor-fan motor
- 6 pressure gauge
- 7 flow-meter
- 8 controller for extractor-fan motor
- 9 start/stop switch
- 10 computer
- 11 printer
- 12 air inlet
- 13 air outlet

**Figure A.1 — Example of automatic measurement equipment**

### A.3 Procedure

The method of measurement is typically as follows, although the procedure can be modified in accordance with the operating instructions given by the manufacturer of a particular apparatus.

- a) Press the start switch to start the apparatus and then switch on the extractor fan.
- b) Set the pressure differential to  $(125 \pm 1)$  Pa.
- c) Place an impermeable film (such as a thin rubber or plastic sheet) on the test piece mounting plate and lock it in place with the clamping ring.
- d) Start the extractor fan and confirm that there are no leaks, i.e. that there is zero air flow with the selected orifice size.
- e) Switch off the extractor fan, remove the film and then re-start the fan.
- f) Set the pressure differential to  $(125 \pm 1)$  Pa.
- g) Mount the test piece on the mounting plate and lock it in place with the clamping ring, taking care to avoid wrinkling or folding of the test piece.
- h) Select the desired orifice size by adjusting the switch on the computer.
- i) Read the result displayed on the computer screen after a few seconds when a steady flow rate has been obtained (stable to better than  $\pm 3\%$ ) and record this result as the air flow value, rounding up to the second decimal place.
- j) Switch the fan off and remove the test piece.
- k) Repeat the procedure with a further two test pieces and compute the average of the three values, rounding the average to one decimal place.
- l) Check for side leakage between the test piece mounting plate and the clamping ring by inserting a test piece, covering its upper surface with an impermeable film and repeating steps g) to j). If a positive air flow value is obtained, subtract this from the average value computed in step k) to give a corrected average.

**NOTE** Calibration of the apparatus can be carried out using a plate of known flow-rate value which is usually supplied by the manufacturer.

---

---

**ICS 83.100**

Price based on 11 pages