
**Earth-moving machinery — Seat belts
and seat belt anchorages — Performance
requirements and tests**

*Engins de terrassement — Ceintures de sécurité et ancrages pour
ceintures de sécurité — Exigences de performance et essais*



PDF disclaimer

This PDF file may contain embedded typefaces. In accordance with Adobe's licensing policy, this file may be printed or viewed but shall not be edited unless the typefaces which are embedded are licensed to and installed on the computer performing the editing. In downloading this file, parties accept therein the responsibility of not infringing Adobe's licensing policy. The ISO Central Secretariat accepts no liability in this area.

Adobe is a trademark of Adobe Systems Incorporated.

Details of the software products used to create this PDF file can be found in the General Info relative to the file; the PDF-creation parameters were optimized for printing. Every care has been taken to ensure that the file is suitable for use by ISO member bodies. In the unlikely event that a problem relating to it is found, please inform the Central Secretariat at the address given below.

© ISO 2005

All rights reserved. Unless otherwise specified, no part of this publication may be reproduced or utilized in any form or by any means, electronic or mechanical, including photocopying and microfilm, without permission in writing from either ISO at the address below or ISO's member body in the country of the requester.

ISO copyright office
Case postale 56 • CH-1211 Geneva 20
Tel. + 41 22 749 01 11
Fax + 41 22 749 09 47
E-mail copyright@iso.org
Web www.iso.org

Published in Switzerland

Foreword

ISO (the International Organization for Standardization) is a worldwide federation of national standards bodies (ISO member bodies). The work of preparing International Standards is normally carried out through ISO technical committees. Each member body interested in a subject for which a technical committee has been established has the right to be represented on that committee. International organizations, governmental and non-governmental, in liaison with ISO, also take part in the work. ISO collaborates closely with the International Electrotechnical Commission (IEC) on all matters of electrotechnical standardization.

International Standards are drafted in accordance with the rules given in the ISO/IEC Directives, Part 2.

The main task of technical committees is to prepare International Standards. Draft International Standards adopted by the technical committees are circulated to the member bodies for voting. Publication as an International Standard requires approval by at least 75 % of the member bodies casting a vote.

Attention is drawn to the possibility that some of the elements of this document may be the subject of patent rights. ISO shall not be held responsible for identifying any or all such patent rights.

ISO 6683 was prepared by Technical Committee ISO/TC 127, *Earth-moving machinery*, Subcommittee SC 2, *Safety requirements and human factors*.

This second edition cancels and replaces the first edition (ISO 6683:1981), which has been technically revised.

Earth-moving machinery — Seat belts and seat belt anchorages — Performance requirements and tests

1 Scope

This International Standard establishes the minimum performance requirements and tests for restraint systems — seat belts and their fastening elements (anchorages) — on earth-moving machinery, necessary to restrain an operator or rider within a roll-over protective structure (ROPS) in the event of a machine roll-over (see ISO 3471), or within a tip-over protection structure (TOPS) in the event of a machine tip-over (see ISO 12117).

2 Normative references

The following referenced documents are indispensable for the application of this document. For dated references, only the edition cited applies. For undated references, the latest edition of the referenced document (including any amendments) applies.

ISO 3411:1995, *Earth-moving machinery — Human physical dimensions of operators and minimum operator space envelope*

ISO 3471:1994, *Earth-moving machinery — Roll-over protective structures — Laboratory tests and performance requirements*

ISO 5353:1995, *Earth-moving machinery, and tractors and machinery for agriculture and forestry — Seat index point*

ISO 12117:1997, *Earth-moving machinery — Tip-over protection structure (TOPS) for compact excavators — Laboratory tests and performance requirements*

SAE J386:1997, *Operator Restraint System for Off-Road Work Machines*

UNECE R16:2000, *Uniform provisions concerning the approval of safety-belts and restraint systems for occupants of power-driven vehicles, vehicles equipped with safety-belts*

3 Terms and definitions

For the purposes of this document, the following terms and definitions apply.

3.1

seat belt assembly

belt, including any buckle, length adjuster, retractor and means for securing to an anchorage, that fastens across the pelvic area to provide pelvic restraint during operating and roll-over conditions

3.2

anchorage

provision to transfer forces applied to the seat belt assembly to the machine structure

3.3

restraint system

seat belt assembly with anchorages

3.4

polyester fibre

fibres of any long-chain synthetic polymer composed of at least 85 % by weight of an ester of a dihydric alcohol and terephthalic acid

4 Seat belt assembly

The seat belt assembly components shall be in accordance with either

- SAE J386, Clause 4 or
- UNECE R16:2000, Clause 6, but excluding 6.4.

5 Restraint system specifications

5.1 General

The restraint system may consist of an adjustable seat belt assembly or an adjustable seat belt assembly with retractor.

5.2 Belt webbing

The webbing shall have a minimum width of 46 mm. The belt length shall be adjustable for an arctic-clothed operator in the 5th to 95th percentile, in accordance with ISO 3411.

The webbing shall have resistance to abrasion, temperature, mild acids, alkalies, mildew, aging, moisture and sunlight equal to or better than that of untreated polyester fibre.

5.3 Belt buckle

It shall be possible to release the buckle with one mittened hand in a single motion. The buckle shall remain closed until it is intentionally opened. With a force on the belt loop of $670 \text{ N} \pm 45 \text{ N}$, the actuation force required to open the buckle shall be at least 10 N and shall not exceed 130 N.

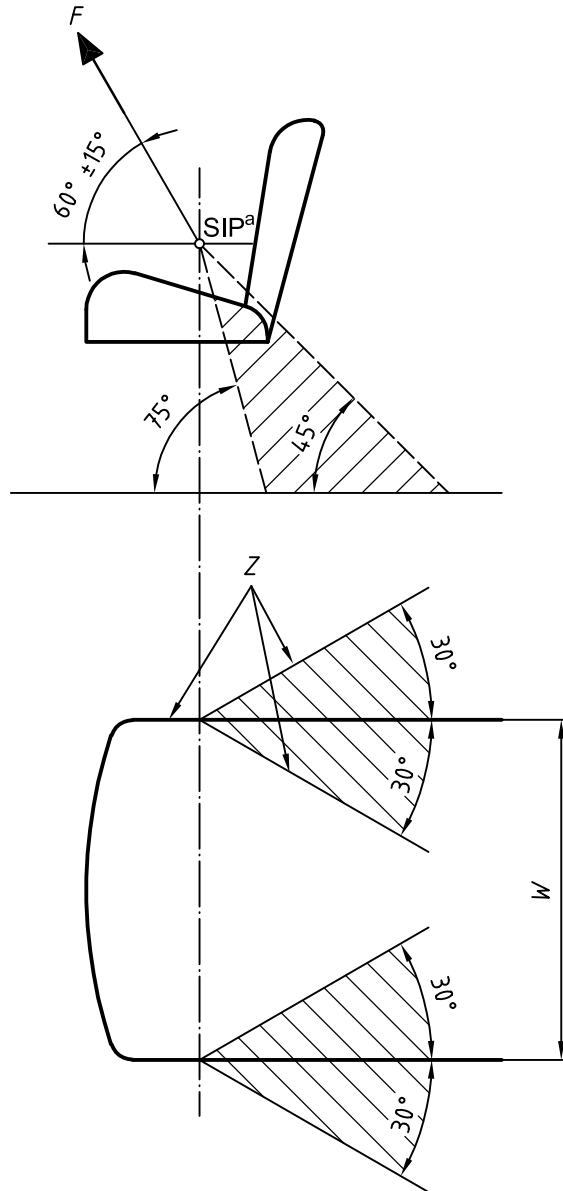
6 Performance requirements for anchorages

Anchorage shall permit the seat belt assembly to be readily installed or replaced and shall comply with the strength requirements of Clause 7.

If the seat does not swivel or have a suspension system, the seat belt assembly shall be anchored to the seat or to the machine at any point within the hatched zones shown in Figure 1.

If the seat does swivel or has a suspension system, the seat belt assembly shall be attached to anchorages on the seat near the rear corners of the seat cushion within the hatched zones shown in Figure 1, such that the seat belt assembly moves with the seat cushion at all times. Belts, cables or similar flexible devices may be used to transfer the seat belt assembly loads from the seat anchorages to the machine.

The seat index point (SIP) shall be determined in accordance with ISO 5353.



Key

- F load force
- W seat cushion width
- Z belt zone
- ^a Seat index point (see ISO 5353).

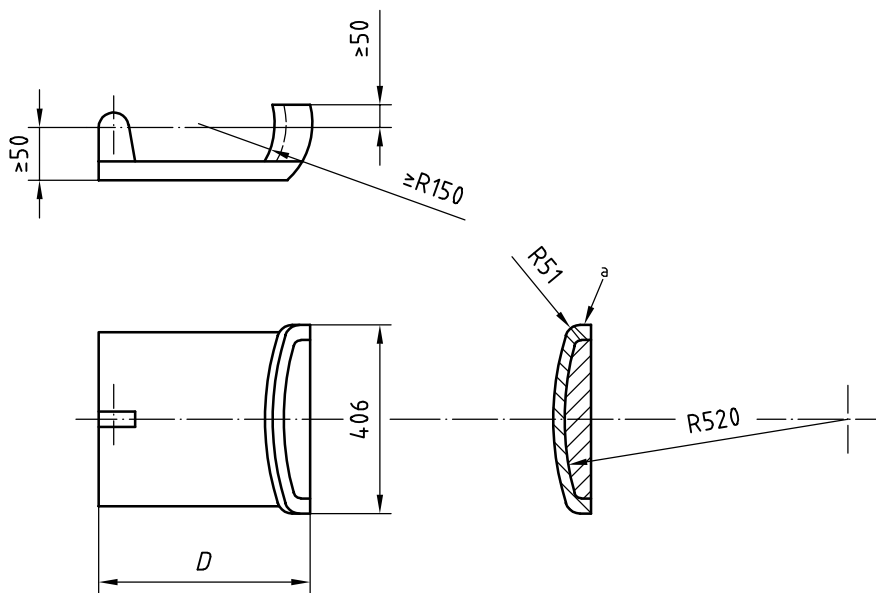
Figure 1 — Seat belt anchorage zones

7 Performance requirements and tests for restraint systems

The installed restraint system shall meet the following requirements when loaded in a forward and upward direction at an angle of $60^\circ \pm 15^\circ$ from the horizontal, with the line of force approximately passing through the SIP (see ISO 5353).

- a) The buckled restraint system shall withstand a gradually-increased force, F (see Figure 1), of a minimum of 15 000 N for at least 10 s. The force shall be attained within not more than 30 s. The body block shown in Figure 2 may be used for the application of F .
- b) The length of the seat belt assembly shall not increase by more than 20 % when subjected to F .
- c) Permanent deformation of any system component and anchorage area is acceptable under the action of F . However, there shall be no failure allowing release of the restraint system, seat assembly or seat adjustment locking mechanism.
- d) The belt buckle shall meet the opening force requirements of 5.2 after being subjected to F .

Dimensions in millimetres



Key

D optional

^a Foam rubber, medium density (canvas covered), 25 mm thick.

Figure 2 — Body block used for application of force F (see Figure 1)

1

ICS 53.100

Price based on 4 pages