
End mills with indexable inserts —
Part 1:
End mills with flatted cylindrical shank

Fraises en bout à plaquettes amovibles —

Partie 1: Fraises à queue cylindrique à méplat



Reference number
ISO 6262-1:2013(E)



COPYRIGHT PROTECTED DOCUMENT

© ISO 2013

All rights reserved. Unless otherwise specified, no part of this publication may be reproduced or utilized otherwise in any form or by any means, electronic or mechanical, including photocopying, or posting on the internet or an intranet, without prior written permission. Permission can be requested from either ISO at the address below or ISO's member body in the country of the requester.

ISO copyright office
Case postale 56 • CH-1211 Geneva 20
Tel. + 41 22 749 01 11
Fax + 41 22 749 09 47
E-mail copyright@iso.org
Web www.iso.org

Published in Switzerland

Contents

	Page
Foreword	iv
1 Scope	1
2 Normative references	1
3 Dimensions	1
Annex A (informative) Relationship between designations in this part of ISO 6262 and the ISO 13399 series	3
Bibliography	4

Foreword

ISO (the International Organization for Standardization) is a worldwide federation of national standards bodies (ISO member bodies). The work of preparing International Standards is normally carried out through ISO technical committees. Each member body interested in a subject for which a technical committee has been established has the right to be represented on that committee. International organizations, governmental and non-governmental, in liaison with ISO, also take part in the work. ISO collaborates closely with the International Electrotechnical Commission (IEC) on all matters of electrotechnical standardization.

The procedures used to develop this document and those intended for its further maintenance are described in the ISO/IEC Directives, Part 1. In particular the different approval criteria needed for the different types of ISO documents should be noted. This document was drafted in accordance with the editorial rules of the ISO/IEC Directives, Part 2. www.iso.org/directives

Attention is drawn to the possibility that some of the elements of this document may be the subject of patent rights. ISO shall not be held responsible for identifying any or all such patent rights. Details of any patent rights identified during the development of the document will be in the Introduction and/or on the ISO list of patent declarations received. www.iso.org/patents

Any trade name used in this document is information given for the convenience of users and does not constitute an endorsement.

The committee responsible for this document is ISO/TC 29, *Small tools*, Subcommittee SC 9, *Tools with cutting edges made of hard cutting materials*.

This second edition cancels and replaces the first edition (ISO 6262-1:1982), of which it constitutes a minor revision.

ISO 6262 consists of the following parts, under the general title *End mills with indexable inserts*:

- *Part 1: End mills with flatted cylindrical shank*
- *Part 2: End mills with Morse taper shank*

End mills with indexable inserts —

Part 1: End mills with flatted cylindrical shank

1 Scope

This part of ISO 6262 specifies the dimensions of end mills with indexable inserts and flatted parallel shank according to ISO 3338-2.

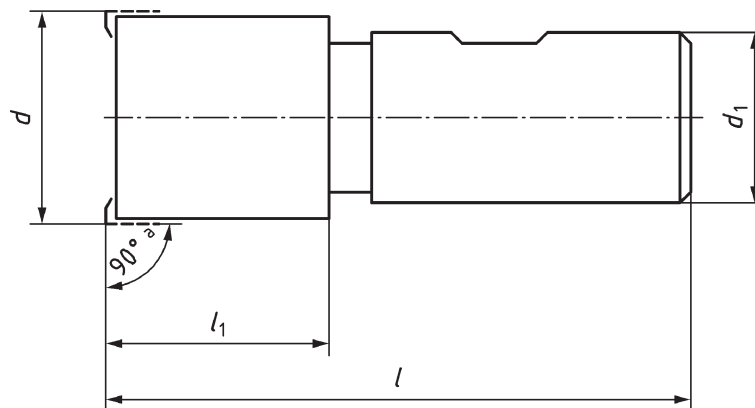
The form and dimensions of the inserts are left to the discretion of the manufacturer.

2 Normative references

The following documents, in whole or in part, are normatively referenced in this document and are indispensable to its application. For dated references, only the edition cited applies. For undated references, the latest edition of the referenced document (including any amendments) applies.

ISO 3338-2, *Cylindrical shanks for milling cutters — Part 2: Dimensional characteristics of flatted cylindrical shanks*

3 Dimensions



- a The value of 90° shall be the nominal value of the cutting edge angle of the insert. The effective angle obtained on the workpiece depends on the geometry and the diameter of the milling cutter together with the cutting depth.

Figure 1 — Dimensions

Table 1 — Dimensions

Dimensions in millimetres

d j_{s14}	d_1^a $h6$	l_1 max	l
16	16	25	75
20	20	30	82
25	25	38	96
32	32	38	100
40	32	48	110
50	32	48	110

^a The shank dimensions and configuration shall be in accordance with ISO 3338-2.

.....

Annex A (informative)

Relationship between designations in this part of ISO 6262 and the ISO 13399 series

For the relationship between designations in this part of ISO 6262 and preferred symbols according to ISO 13399 (all parts), see [Table A.1](#).

Table A.1 — Relationship between designations in this part of ISO 6262 and the ISO 13399 series

Symbol in ISO 6262-1 (this part of ISO 6262)	Reference in ISO 6262-1 (this part of ISO 6262)	Property name in the ISO 13399 series	Symbol in the ISO 13399 series	Reference in the ISO 13399 series
d	Figure 1 and Table 1	Cutting diameter	DC	ISO/TS 13399-3, 71D084653E57F
d_1	Figure 1 and Table 1	Connection diameter	DCON	ISO/TS 13399-3, 71EBDBF5060E6
l_1	Figure 1 and Table 1	Head length	LH	ISO/TS 13399-3, 71D07574A61E8
l	Figure 1 and Table 1	Overall length	OAL	ISO/TS 13399-3, 71D078EB7C086
90°	Figure 1	Tool cutting edge angle	KAPR	ISO/TS 13399-3, 71D078F683C9B

Bibliography

- [1] ISO 13399 (all parts), *Cutting tool data representation and exchange*

.....

