
Earth-mover tyres and rims —

**Part 3:
Rims**

*Pneumatiques et jantes pour engins de terrassement —
Partie 3: Jantes*

www.iso.org



Reference number
ISO 4250-3:2011(E)

© ISO 2011

© ISO 2011



COPYRIGHT PROTECTED DOCUMENT

© ISO 2011

All rights reserved. Unless otherwise specified, no part of this publication may be reproduced or utilized in any form or by any means, electronic or mechanical, including photocopying and microfilm, without permission in writing from either ISO at the address below or ISO's member body in the country of the requester.

ISO copyright office
Case postale 56 • CH-1211 Geneva 20
Tel. + 41 22 749 01 11
Fax + 41 22 749 09 47
E-mail copyright@iso.org
Web www.iso.org

Published in Switzerland

Contents

Page

Foreword	iv
Introduction	v
1 Scope	1
2 Normative references	1
3 Terms and definitions	1
4 Rim identification	1
5 Rim contours	2
6 Rim knurling	2
7 Rim loads and inflation pressures	2
8 Rim dimensions	2
Annex A (informative) Sealing ring grooves and O-rings for earth-mover rims	11
Bibliography	13

Foreword

ISO (the International Organization for Standardization) is a worldwide federation of national standards bodies (ISO member bodies). The work of preparing International Standards is normally carried out through ISO technical committees. Each member body interested in a subject for which a technical committee has been established has the right to be represented on that committee. International organizations, governmental and non-governmental, in liaison with ISO, also take part in the work. ISO collaborates closely with the International Electrotechnical Commission (IEC) on all matters of electrotechnical standardization.

International Standards are drafted in accordance with the rules given in the ISO/IEC Directives, Part 2.

The main task of technical committees is to prepare International Standards. Draft International Standards adopted by the technical committees are circulated to the member bodies for voting. Publication as an International Standard requires approval by at least 75 % of the member bodies casting a vote.

Attention is drawn to the possibility that some of the elements of this document may be the subject of patent rights. ISO shall not be held responsible for identifying any or all such patent rights.

ISO 4250-3 was prepared by Technical Committee ISO/TC 31, *Tyres, rims and valves*, Subcommittee SC 6, *Off-the-road tyres and rims*.

This fourth edition cancels and replaces the third edition (ISO 4250-3:2006), which has been technically revised.

ISO 4250 consists of the following parts, under the general title *Earth-mover tyres and rims*:

- *Part 1: Tyre designation and dimensions*
- *Part 2: Loads and inflation pressures*
- *Part 3: Rims*

Introduction

ISO 4250 consists of three parts (ISO 4250-1, ISO 4250-2 and this part of ISO 4250) that lay down the technical elements relating to designation and dimensions of tyres and rims for earth-moving machinery. It also provides load tables for these tyres.

Earth-mover tyres and rims —

Part 3: Rims

1 Scope

This part of ISO 4250 sets out the designation, contours and dimensions for rims for narrow- and wide-base off-road tyres primarily intended for earth-moving machinery.

All dimensions in this part of ISO 4250 are given in millimetres and are applicable to the side of the rim which is in contact with the tyre.

Tyre designations and dimensions, tyre classifications and nomenclature are given in ISO 4250-1, ISO 10571 and ISO 13442.

Annex A gives details on sealing ring grooves and O-rings for earth-mover rims.

2 Normative references

The following referenced documents are indispensable for the application of this document. For dated references, only the edition cited applies. For undated references, the latest edition of the referenced document (including any amendments) applies.

ISO 3911, *Wheels and rims for pneumatic tyres — Vocabulary, designation and marking*

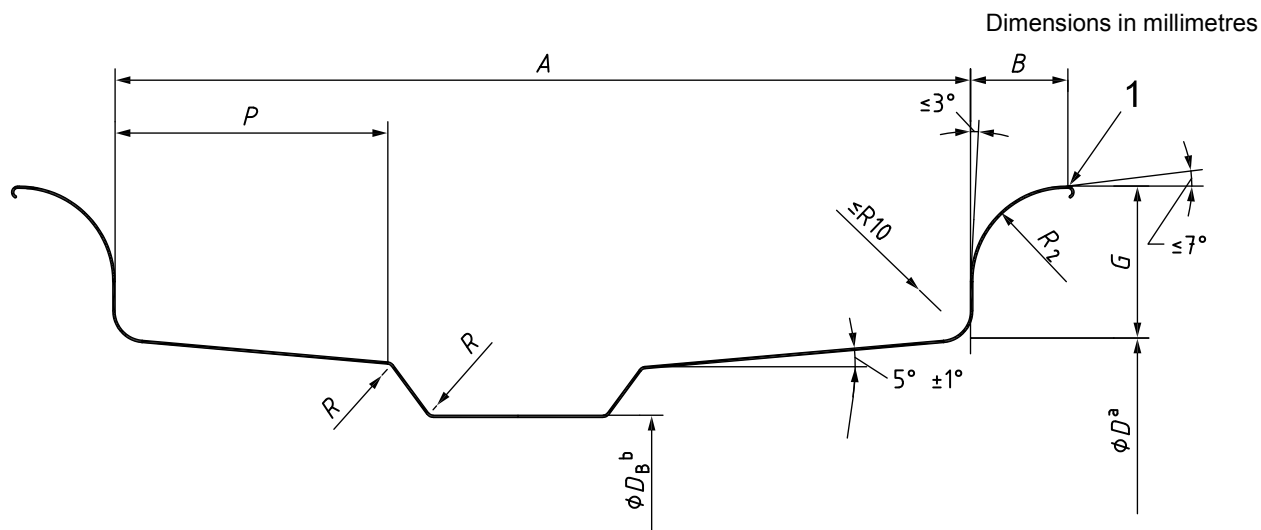
3 Terms and definitions

For the purposes of this document, the terms and definitions given in ISO 3911 apply.

4 Rim identification

4.1 Codes shall be used to identify:

- a) specified rim diameter, D (see Table 7);
- b) nominal width between flanges;
- c) nominal flange height or rim profile designations.



Key

1 break corner equivalent to R1 min.

Flange and bead seat shall be removable on one side.

All flange and bead seat dimensions apply to both sides of the rim contour.

NOTE This figure applies to rim diameter codes 24, 25, 29, 33, 35, 39, 45, 49, 51, 57 and 63. (See Table 7 for specific rim diameters.)

- a For rim diameter codes < 49, D tolerance: $\begin{matrix} +0,4 \\ -0,8 \end{matrix}$.
- For rim diameter codes ≥ 49 , D tolerance: $\pm 0,8$.

The tolerance given for the specified rim diameter, D , is for tyre design purposes only. The actual rim measurement by circumference is established by using a mandrel and a tape.

- b For rim diameter codes ≤ 49 , $D_B = (D - 25,5) \begin{matrix} + 0,5 \\ -13,0 \end{matrix}$.
- For rim diameter codes 51 and 57, $D_B = (D - 51,0) \begin{matrix} + 0,5 \\ -13,0 \end{matrix}$.
- For rim diameter code 63, $D_B = (D - 63,5) \pm 13,0$.

Figure 1 — Contours of 5° full tapered bead seat rims

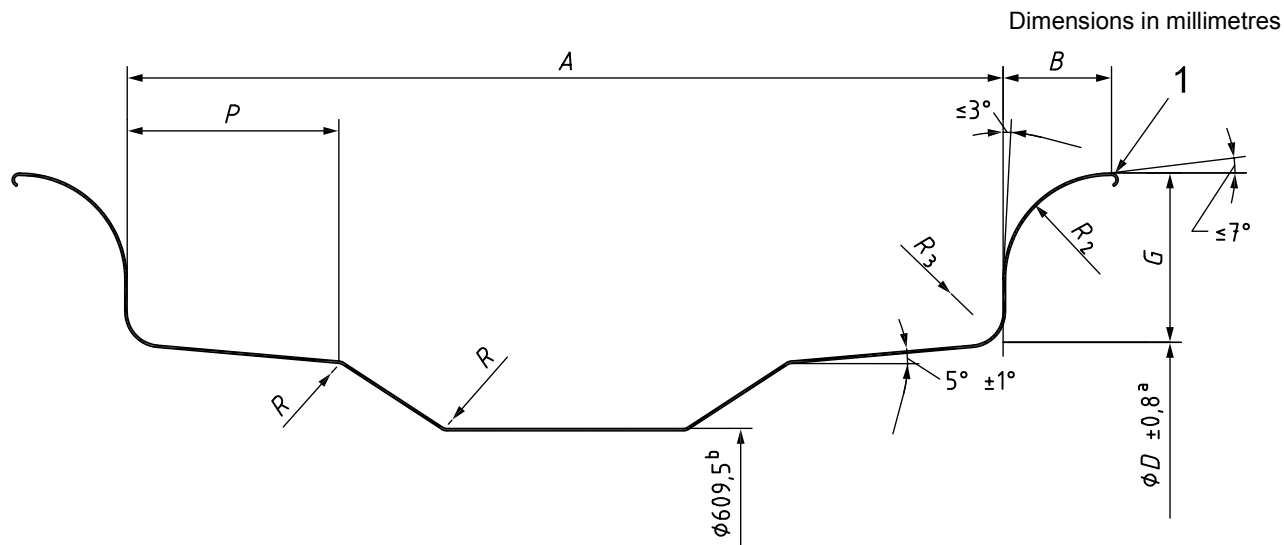
Table 1 — Contours of 5° full tapered bead seat rims

Dimensions in millimetres

Rim width code/ flange height code ^a	<i>A</i>	<i>G</i>	<i>B</i>	<i>P</i>	<i>R</i> ₂	
	±13,0	±2,0	min.	min.		tol.
11.25/2.0	286,0	51,0	32,5	101,0	32,0	±1,5
13.00/2.5	330,0	63,5	45,5	101,0	38,0	±1,5
13.00/2.75	330,0	70,0	48,5	101,0	47,5	±1,5
14.00/1.5	355,5	38,1	24,5	51,0	25,0	±1,5
15.00/3.0	381,0	76,0	55,0	117,5	44,5	±1,5
15.00/3.0 ^b	381,0	76,0	55,0	117,5	51,0	±2,0
17.00/2.0	432,0	51,0	32,5	101,0	32,0	±1,5
17.00/3.5	432,0	89,0	58,0	139,0	51,0	±2,0
19.50/2.0	495,5	51,0	32,5	101,0	32,0	±1,5
19.50/2.5	495,5	63,5	45,5	101,0	38,0	±1,5
19.50/4.0	495,5	101,5	66,0	139,0	57,0	±2,0
20.00/2.0	508,0	51,0	32,5	101,0	32,0	±1,5
22.00/3.0	559,0	76,0	55,0	139,0	44,5	±1,5
22.00/3.5	559,0	89,0	76,0	139,0	51,0	±2,0
22.00/4.0	559,0	101,5	66,0	139,0	57,0	±2,0
22.00/4.5	559,0	114,5	74,0	190,5	63,5	±2,0
24.00/3.0	609,5	76,0	55,0	139,0	44,5	±1,5
24.00/3.5	609,5	89,0	58,0	139,0	51,0	±2,0
24.00/5.0	609,5	127,0	86,5	190,5	70,0	±2,0
25.00/3.5	635,0	89,0	58,0	139,0	51,0	±2,0
26.00/3.5	660,5	89,0	58,0	139,0	51,0	±2,0
26.00/5.0	660,5	127,0	86,5	190,5	70,0	±2,0
27.00/3.5	686,0	89,0	58,0	139,0	51,0	±2,0
27.00/6.0	686,0	152,5	122,0	190,5	84,0	±2,5
28.00/3.5	711,0	89,0	58,0	139,0	51,0	±2,0
28.00/4.0	711,0	101,5	66,0	139,0	57,0	±2,0
29.00/3.5	736,5	89,0	58,0	139,0	51,0	±2,0
29.00/6.0	736,5	152,5	122,0	190,5	84,0	±2,5
31.00/4.0	787,5	101,5	66,0	139,0	57,0	±2,0
32.00/4.0	813,0	101,5	66,0	139,0	57,0	±2,0
32.00/4.5	813,0	114,5	74,0	139,0	63,5	±2,0
32.00/6.0	813,0	152,5	122,0	139,0	84,0	±2,5
32.00/6.5	813,0	165,0	122,0	190,5	70,0	±2,0
34.00/5.0	863,5	127,0	86,5	190,5	70,0	±2,0
36.00/4.5	914,5	114,5	74,0	139,0	63,5	±2,0
36.00/5.0	914,5	127,0	86,5	190,5	70,0	±2,0
36.00/6.0	914,5	152,5	122,0	190,5	84,0	±2,5
38.00/5.0	965,0	127,0	139,5	190,5	70,0	±2,0
40.00/4.5	1 016,0	114,5	74,0	190,5	63,5	±2,0
44.00/5.0	1 117,5	127,0	139,5	190,5	70,0	±2,5
44.00/6.0	1 117,5	152,5	122,0	190,5	84,0	±2,5
41.00/5.0	1 041,5	127,0	127,0	190,5	70,0	±2,0
52.00/6.0	1 321,0	152,5	127,0	254,0	84,0	±2,5

^a The rim width code and flange height code are applicable to specific tyre sizes. See ISO 4250-1 for approved rim/tyre combinations.

^b For rim diameter code 49.



Key

1 break corner equivalent to R1 min.

Flange and bead seat shall be removable on one side.

All flange and bead seat dimensions apply to both sides of the rim contour.

NOTE This figure applies to rim diameter code 25. (See Table 7 for specified rim diameters.)

^a The tolerance given for the specified rim diameter, *D*, is for tyre design purposes only. The actual measurement by circumference is established by using a mandrel and a tape.

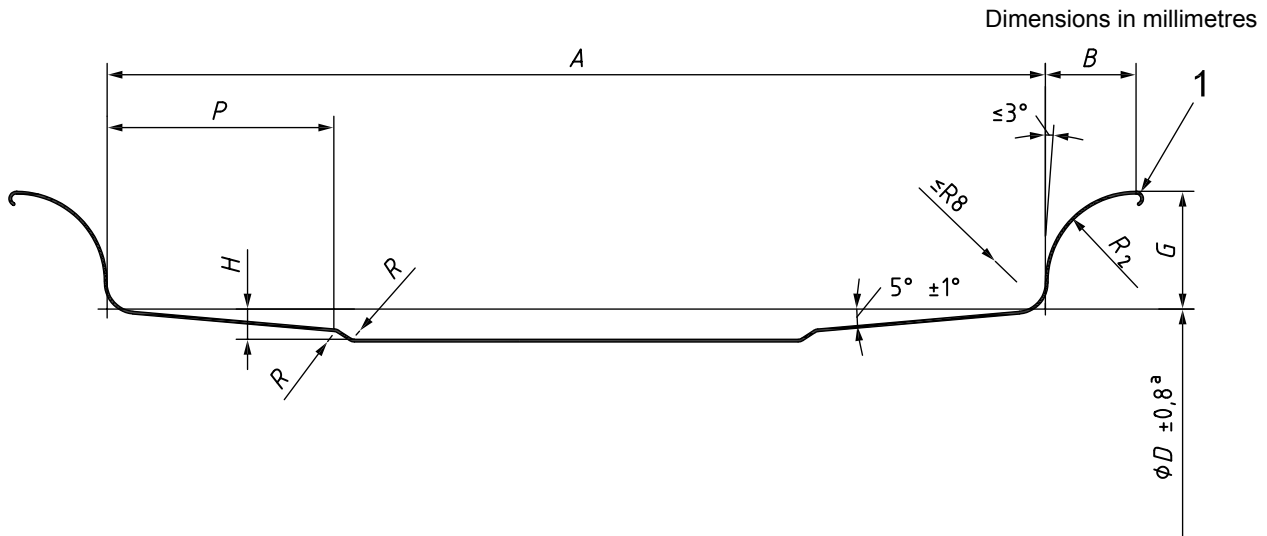
^b For rims 8.50/1.3 and 10.00/1.5, *D* tolerance: $\begin{matrix} +0,5 \\ -6,5 \end{matrix}$.
For larger rims, *D* tolerance: $\begin{matrix} +0,5 \\ -13,0 \end{matrix}$.

Figure 2 — Contours of 5° full tapered bead seat rims

Table 2 — Contours of 5° full tapered bead seat rims

Dimensions in millimetres

Rim width code/ flange height code	<i>A</i>		<i>G</i>		<i>B</i>	<i>P</i>	<i>R</i> ₂	<i>R</i> ₃
		tol.		tol.	min.	min.	±1,5	max.
8.50/1.3	216,0	±5,0	33,0	±1,5	25,5	50,0	23,0	8,0
10.00/1.5	254,0	±5,0	38,0	±1,5	28,0	59,0	25,5	8,0
12.00/1.3	305,0	±6,5	33,0	±1,5	25,5	47,0	23,0	10,0
14.00/1.5	355,5	±6,5	38,0	±1,5	28,0	59,0	25,5	10,0
17.00/1.7	432,0	±13,0	43,0	±2,0	25,5	60,0	23,0	8,0



Key

1 break corner equivalent to R1 min.

Flange and bead seat shall be removable on one side.

All flange and bead seat dimensions apply to both sides of the rim contour.

NOTE This figure applies to rim diameter codes 24 and 25. (See Table 7 for specified rim diameters.)

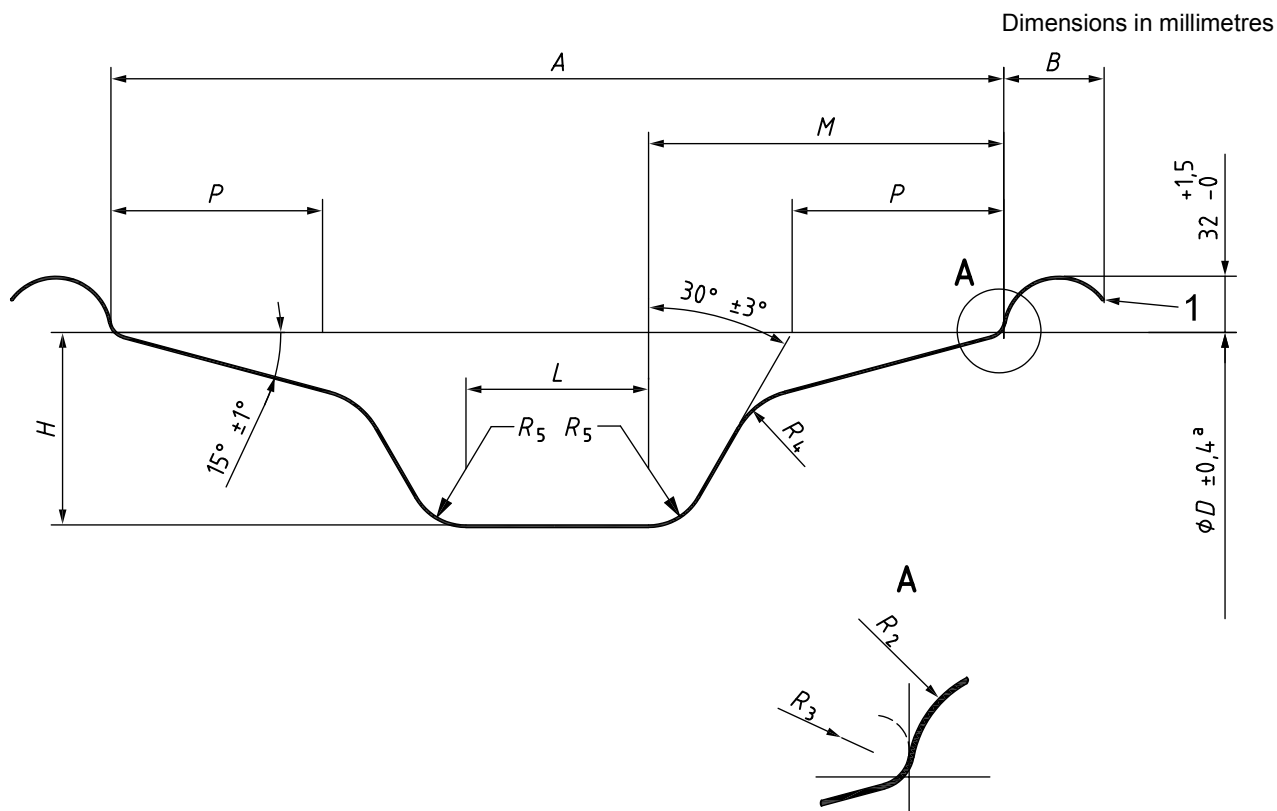
^a The tolerance given for the specified rim diameter, *D*, is for tyre design purposes only. The actual rim measurement by circumference is established using a mandrel and a tape.

Figure 3 — Contours of semi-drop-centre rims

Table 3 — Contours of semi-drop-centre rims

Dimensions in millimetres

Rim width code/ flange height code	<i>A</i>		<i>G</i>	<i>B</i>	<i>P</i>	<i>H</i>	<i>R</i> ₂	Rim diameter code
		tol.	±1,5	min.	min.	min.	±1,5	
8.00 TG	203,0	±3,5	35,5	17,5	47,0	6,5	16,5	24
10.00 VA	254,0	±5,0	43,0	25,5	59,0	11,0	23,0	24
12.00/1.3	305,0	±6,5	33,0	25,5	47,0	7,0	23,0	25
14.00/1.3	355,5	±6,5	33,0	25,5	47,0	7,0	23,0	25



Key

1 break corner equivalent to R1 min.

NOTE This figure applies to rim diameter codes 56.5 and 59.5. (See Table 7 for specified rim diameters.)

^a The tolerance given for the specified rim diameter, *D*, is for tyre design purposes only. The actual rim measurement by circumference is established using a mandrel and a tape.

^b The tyre-mounting side is that side of the rim to which dimension *M* applies.

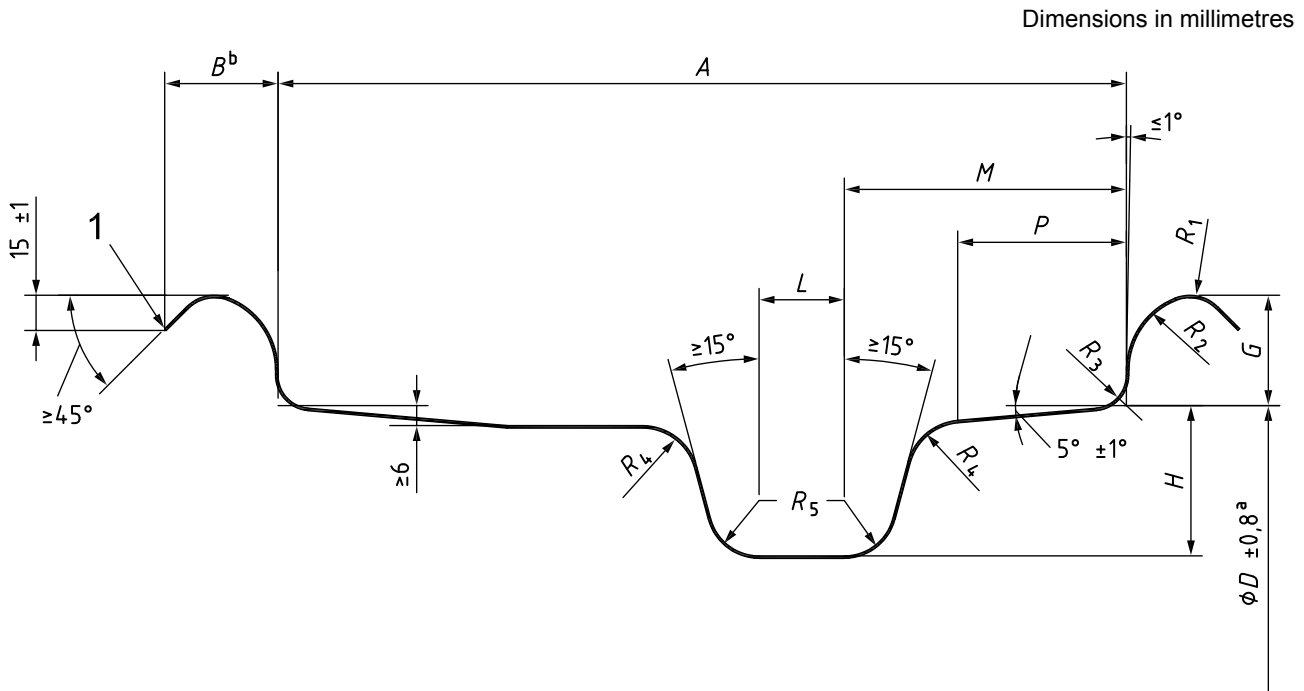
Figure 4 — Contours of 15° drop-centre rims

Table 4 — Contours of 15° drop-centre rims

Dimensions in millimetres

Rim width code	<i>A</i>	<i>B</i>	<i>H</i> ^a	<i>L</i> ^a	<i>M</i> ^a	<i>P</i>	<i>R</i> ₂	<i>R</i> ₃	<i>R</i> ₄	<i>R</i> ₅ ^a
	±10,0	min.			max.	min.		max.	max.	
20.0	508,0	57,0	109,5	106,0	201,5	120,5	32,0	19,5	44,5	32,0
21.0	533,0	57,0	109,5	106,0	201,5	120,5	32,0	19,5	44,5	32,0
22.0	559,0	57,0	109,5	157,0	201,5	120,5	32,0	19,5	44,5	32,0
23.5	597,0	66,5	131,5	111,0	248,0	152,0	41,0	25,5	48,0	38,5
27.0	686,0	66,5	131,5	200,0	248,0	152,0	41,0	25,5	48,0	38,5

^a These dimensions comprise the minimum well envelope for tyre-mounting purposes.



Key

1 break corner equivalent to R1 min.

NOTE This figure applies to rim diameter codes 24 and 25. (See Table 7 for specified rim diameters.)

- a The tolerance given for the specified rim diameter, *D*, is for tyre design purposes only. The actual rim measurement by circumference is established by using a mandrel and a tape.
- b Flange width *B* includes an edge radius.
- c The tyre-mounting side is that side of the rim to which dimension *M* applies.

Figure 5 — Contours of 5° drop-centre rims

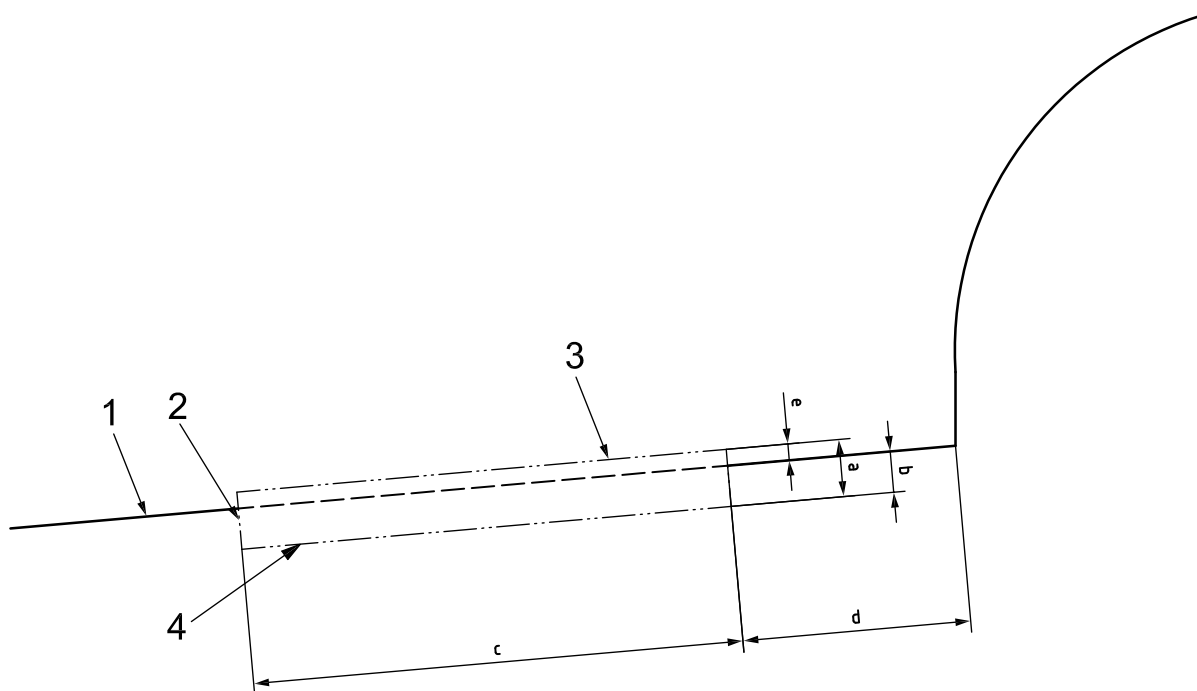
Table 5 — Contours of 5° drop-centre rims

Dimensions in millimetres

Rim width code/ flange height code	<i>A</i>		<i>G</i>	<i>B</i>		<i>P</i>	<i>H</i> ^a	<i>L</i> ^a	<i>M</i> ^a	<i>R</i> ₁	<i>R</i> ₂	<i>R</i> ₃	<i>R</i> ₄	<i>R</i> ₅ ^a	Rim diameter code
	tol.	±5,0	±1,5	min.	max.	min.	min.	min.	max.	+3,0 0	max.	min.	min.	≤24,0	
9.00/1.5	228,5	±5,0	38,0	25,0	36,0	49,0	48,0	25,5	102,0	14,0	19,0	8,0	22,0	≤24,0	24
10.00/1.3	254,0	±6,0	33,0	25,0	40,0	49,0	45,0	25,5	102,0	12,0	23,0	10,0	17,0	≥15,0	24
12.00/1.3	305,0	±6,5	33,0	25,0	40,0	40,0	45,0	30,0	90,0	12,0	23,0	10,0	17,0	≥15,0	25
13.00/1.4	330,0	±6,5	36,0	25,0	40,0	40,0	48,0	30,0	102,0	12,0	23,0	10,0	17,0	≥15,0	25
14.00/1.3	355,5	±6,5	33,0	25,0	40,0	40,0	45,0	30,0	90,0	12,0	23,0	10,0	17,0	≥15,0	25
14.00/1.5	355,5	±6,5	38,0	27,0	43,0	40,0	52,0	30,0	90,0	12,0	25,5	10,0	17,0	≥15,0	25

^a These dimensions comprise the minimum well envelope for tyre-mounting purposes.

Dimensions in millimetres



Key

- 1 base line
- 2 knurl envelope
- 3 crest
- 4 root

Pitch: $\geq 1,5$ to $\leq 5,0$

- a Height from crest to root: $\geq 0,5$ to $\leq 1,0$.
- b Depth.
- c Width.
- d Offset: $\geq 9,5$ to $\leq 16,0$.
- e Height from crest to base line: $\geq 0,2$.

Figure 6 — Knurling detail

Table 6 — Knurling widths

Dimensions in millimetres

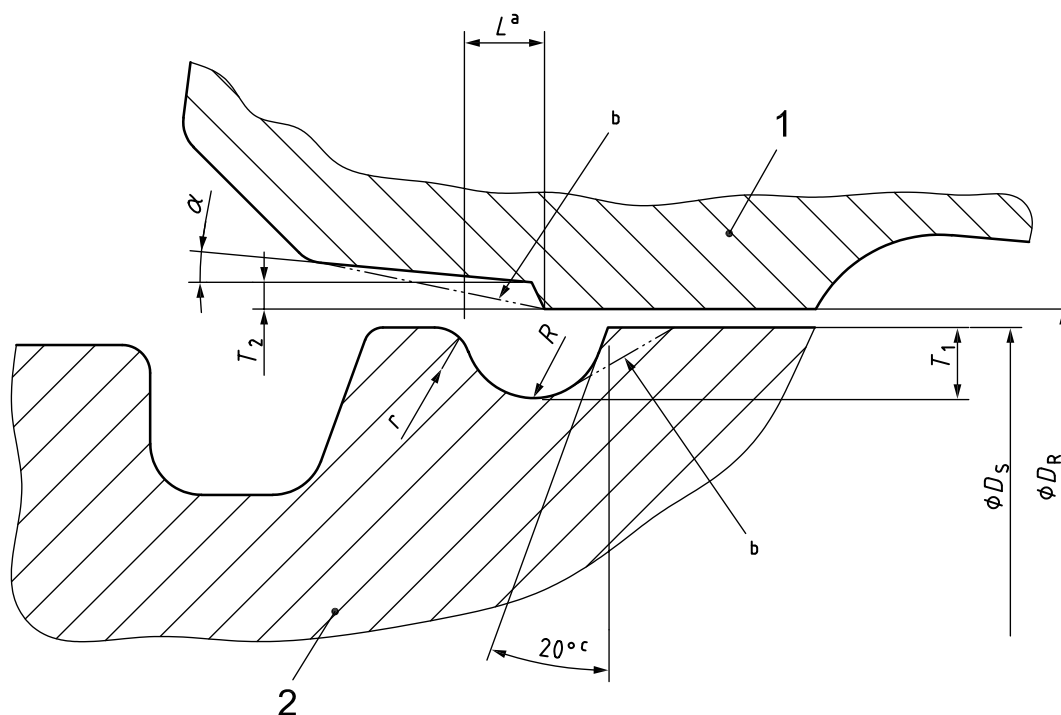
Rim width codes	Fixed flange side	Removable flange side
a) Rim diameter codes 25 to 49		
11.25 to 15.00	$\geq 25,0$	$\leq 51,0$ $\geq 38,0$
17.00 and above	$\leq 67,0$ $\geq 38,0$	$\leq 67,0$ $\geq 38,0$
b) Rim diameter codes 51 and larger		
22.00 and above	$\leq 67,0$ $\geq 53,5$	$\leq 67,0$ $\geq 53,5$

Table 7 — Earth-mover specified rim diameters

Rim diameter codes	Specified diameter
	<i>D</i> mm
24 TG	614,4
24 VA	614,4
25	635,0
29	736,6
33	838,2
35	889,0
39	990,6
45	1 143,0
49	1 244,6
51	1 295,4
56.5	1 435,1
57	1 447,8
59.5	1 511,3
63	1 600,2

Annex A (informative)

Sealing ring grooves and O-rings for earth-mover rims



Key

- 1 bead seat ring
- 2 rim base

a This dimension cannot be measured in practice; it is shown for reference purposes only to provide guidance for the rim and O-ring manufacturers.

b Optional contour.

c May be greater for rim diameter codes 25 and larger.

Figure A.1 — Sealing ring grooves and O-rings for earth-mover rims

Table A.1 — Sealing ring grooves and O-rings for earth-mover rims

Dimensions in millimetres

Rim size	Rim base ^a					Bead seat ring ^a					Proposed O-ring designation																																		
	D_S	πD_S	tol.	R	r	T_1	D_R	πD_R	tol.	T_2		α	L																																
11-20 SDC	487,4	1 531,2	±1,2	3,2	≤1,6	3,2	488,6	1 535,0	±1,2	1,2	5°	5,0	OR 220																																
12-20 SDC							590,2	1 854,2						601,2	1 888,8																														
13-20 SDC																																													
10.00VA-24 SDC	589,0	1 850,4	±1,2				609,6	1 915,1	±2,4				610,8	1 918,9	±2,4	OR 224																													
16.00T-24 SDC																																													
8.00TG-24 SDC	600,0	1 885,0	±1,2				620,6	1 949,7	±1,2				621,8	1 953,4	±1,2	OR 225																													
8.50-25/1.3																																													
10.00-25/1.5	609,6	1 915,1	±2,4			4,8	5,6	OR 325																																					
11.25-25/1.3																																													
12.00-25/1.3																																													
14.00-25/1.5																																													
17.00-25/1.7																																													
12.00-25/1.3 SDC																																													
14.00-25/1.3 SDC	620,6	1 949,7	±1,2	6,4	7,2	±2,4	OR 329																																						
11.25-25	701,6	2 204,1	+1,2 -2,4					703,6	2 210,4																																				
13.00-25										803,2	2 523,3	805,2	2 529,6																																
15.00-25														854,1	2 683,2	856,1	2 689,5																												
16.00-25																		955,7	3 002,4	957,7	3 008,7																								
17.00-25																						1 057,3	3 321,6	1 059,3	3 327,9																				
19.50-25																										1 108,1	3 481,2	1 110,1	3 487,5																
20.00-25																														1 209,7	3 800,4	1 211,7	3 806,7												
22.00-25																																		1 244,6	3 910,0	1 246,6	3 916,3								
24.00-25																																						1 390,7	4 369,0	1 392,7	4 375,3				
25.00-25																																										1 397,0	4 388,8	1 399,0	4 395,1
-29																																													
-33				1 549,4	4 867,6	1 551,0	4 872,6																																						
-35	OR 335																																												
-39		OR 339																																											
-43			OR 343																																										
-45								OR 345																																					
-49									OR 349																																				
-51										OR 451																																			
-57A											OR 457																																		
-57B												OR 457																																	
-63A													OR 463																																
-63B														OR 463																															

^a O-ring size, shape and properties should provide a lasting seal.

Bibliography

- [1] ISO 4250-1, *Earth-mover tyres and rims — Part 1: Tyre designation and dimensions*
- [2] ISO 10571, *Tyres for mobile cranes and similar specialized machines*
- [3] ISO 13442, *Tyres and rims for construction machines*

www.iso.org

ICS 53.100

Price based on 13 pages