
Plain bearings — Wrapped bushes —
Part 3:
Lubrication holes, grooves and
indentations

Paliers lisses — Bagues roulées —

Partie 3: Trous de graissage, rainures de graissage et creux de graissage





COPYRIGHT PROTECTED DOCUMENT

© ISO 2017, Published in Switzerland

All rights reserved. Unless otherwise specified, no part of this publication may be reproduced or utilized otherwise in any form or by any means, electronic or mechanical, including photocopying, or posting on the internet or an intranet, without prior written permission. Permission can be requested from either ISO at the address below or ISO's member body in the country of the requester.

ISO copyright office
Ch. de Blandonnet 8 • CP 401
CH-1214 Vernier, Geneva, Switzerland
Tel. +41 22 749 01 11
Fax +41 22 749 09 47
copyright@iso.org
www.iso.org

Contents

	Page
Foreword	iv
1 Scope	1
2 Normative references	1
3 Terms and definitions	1
4 Symbols and units	1
5 General	2
6 Lubrication holes	2
7 Lubrication grooves	3
7.1 General	3
7.2 Type M1	3
7.2.1 General	3
7.2.2 Type M1A	4
7.2.3 Type M1B	4
7.3 Type M2	5
7.3.1 General	5
7.3.2 Type M2A	6
7.3.3 Type M2B	6
8 Lubrication indentations	6
8.1 General	6
8.2 Types N1	6
8.3 Type N2	7
8.4 Type N3	8
9 Designation	9
Bibliography	10

Foreword

ISO (the International Organization for Standardization) is a worldwide federation of national standards bodies (ISO member bodies). The work of preparing International Standards is normally carried out through ISO technical committees. Each member body interested in a subject for which a technical committee has been established has the right to be represented on that committee. International organizations, governmental and non-governmental, in liaison with ISO, also take part in the work. ISO collaborates closely with the International Electrotechnical Commission (IEC) on all matters of electrotechnical standardization.

The procedures used to develop this document and those intended for its further maintenance are described in the ISO/IEC Directives, Part 1. In particular the different approval criteria needed for the different types of ISO documents should be noted. This document was drafted in accordance with the editorial rules of the ISO/IEC Directives, Part 2 (see www.iso.org/directives).

Attention is drawn to the possibility that some of the elements of this document may be the subject of patent rights. ISO shall not be held responsible for identifying any or all such patent rights. Details of any patent rights identified during the development of the document will be in the Introduction and/or on the ISO list of patent declarations received (see www.iso.org/patents).

Any trade name used in this document is information given for the convenience of users and does not constitute an endorsement.

For an explanation on the meaning of ISO specific terms and expressions related to conformity assessment, as well as information about ISO's adherence to the WTO principles in the Technical Barriers to Trade (TBT) see the following URL: www.iso.org/iso/foreword.html.

This document was prepared by Technical Committee ISO/TC 123, *Plain bearings*, Subcommittee SC 3, *Dimensions, tolerances and construction details*.

This third edition cancels and replaces the second edition (ISO 3547-3:2006), which has been technically revised.

A list of all the parts in the ISO 3547 series can be found on the ISO website.

Plain bearings — Wrapped bushes —

Part 3: Lubrication holes, grooves and indentations

1 Scope

This document specifies dimensions of lubrication holes, grooves and bore indentations on wrapped bushes made of mono and multi-layer bearing material for plain bearing applications.

NOTE Wrapped bushes with lubrication holes, grooves or bore indentations in accordance with this document can be ordered with dimensions in accordance with ISO 3547-1 and made from materials in accordance with ISO 3547-4.

2 Normative references

The following documents are referred to in the text in such a way that some or all of their content constitutes requirements of this document. For dated references, only the edition cited applies. For undated references, the latest edition of the referenced document (including any amendments) applies.

ISO 3547-1, *Plain bearings — Wrapped bushes — Part 1: Dimensions*

ISO 4378-1, *Plain bearings — Terms, definitions, classification and symbols — Part 1: Design, bearing materials and their properties*

ISO 4378-4, *Plain bearings — Terms, definitions, classification and symbols — Part 4: Basic symbols*

3 Terms and definitions

For the purposes of this document, the terms and definitions given in ISO 4378-1 and ISO 4378-4 apply.

ISO and IEC maintain terminological databases for use in standardization at the following addresses:

- ISO Online browsing platform: available at <http://www.iso.org/obp>
- IEC Electropedia: available at <http://www.electropedia.org/>

4 Symbols and units

See [Table 1](#).

Table 1 — Symbols and units

Symbol	Description	Unit
B	Width of the bush	mm
c	Edge length of the diamond-shaped lubrication indentation	mm
D_i	Inside diameter of the bush	mm
d_b	Diameter of the lubrication indentation	mm
d_L	Diameter of the lubrication hole	mm
D_o	Outside diameter of the bush	mm
e	Distance between the lubrication grooves	mm

Table 1 (continued)

Symbol	Description	Unit
n_1, n_2	Width of lubrication groove	mm
R	Radius	mm
s_3	Wall thickness	mm
s_4	Residual wall thickness	mm
t	Depth of the lubrication indentation	mm
α	Layout of the lubrication indentation	°

5 General

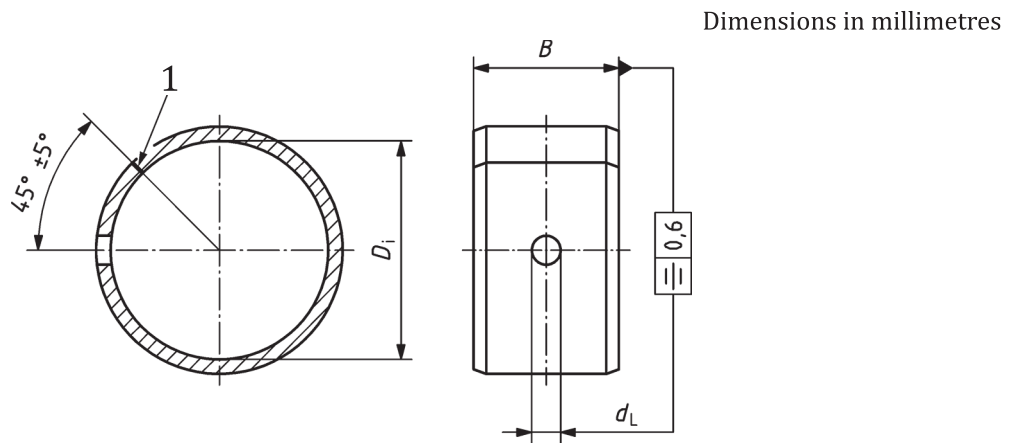
Lubrication holes, grooves and bore indentations may be carried out in the flat strip prior to forming. Dimensional changes due to forming of the strip are permissible. Marks of lubrication grooves and bore indentations produced by stamping may appear on the back of the bush. Small cracks in the bearing material in lubrication grooves and bore indentations are permissible, provided that no pieces become detached.

Untoleranced and unspecified dimensions may be specified differently subject to agreement between the user and supplier.

6 Lubrication holes

See [Figures 1](#) and [2](#).

For the nominal dimensions, see [Table 2](#).

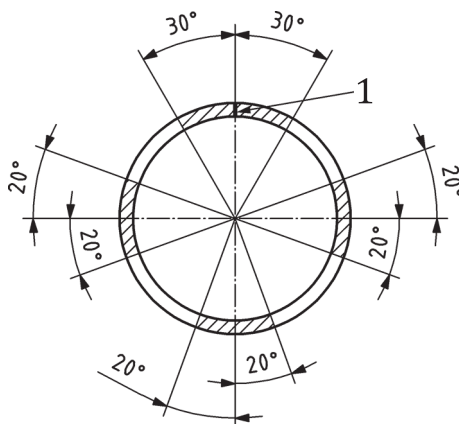


Dimensions in millimetres

Key

1 butt joint

Figure 1 — Lubrication holes (Type L) — Dimensions (see [Table 2](#))



Key

1 butt joint

Lubrication holes in the hatched areas should be avoided as far as possible.

Figure 2 — Lubrication holes (Type L) — Areas of bush not recommended for holes

Table 2 — Nominal dimensions of lubrication holes

Dimensions in millimetres

D_i		d_L^a
>14	≤ 22	3
>22	≤ 40	4
>40	≤ 50	5
>50	≤ 100	6
>100		7

^a Minimum dimension after forming.

7 Lubrication grooves

7.1 General

Lubrication grooves types M1 and M2 are used for lubrication. See [Figures 3 to 8](#) and [Tables 3 to 6](#).

Widening of the lubrication grooves in the area of the lubrication holes, at the butt joint and at the end faces of the bush, is permissible.

Lubrication grooves are normally represented on the developed shape of the bush before forming.

Distortions to the groove shape can occur during the outside diameter forming operations.

In order to facilitate measurement, the dimensions of the bush thickness remaining at the base of the groove may be specified on the drawing as the control dimension.

7.2 Type M1

7.2.1 General

See [Figure 3](#) and [Table 3](#).

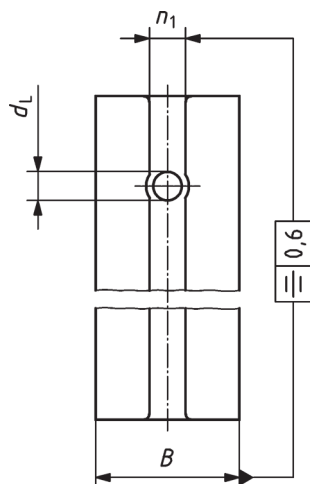


Figure 3 — Type M1 — Dimensions (see Table 3)

Table 3 — Nominal dimensions of lubrication grooves type M1

Dimensions in millimetres

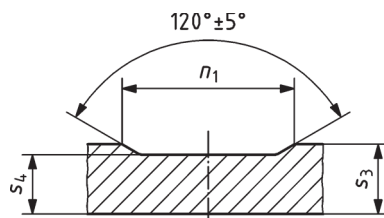
D_i nominal		n_1 $\pm 0,5$	
		Series (in accordance with ISO 3547-1)	
		A, B, D, W	C, E
>14	≤ 22	4	5
>22	≤ 40	5	6
>40	≤ 50	6	7
>50	≤ 100	7	8
>100		8	9

7.2.2 Type M1A

See Figure 4 and Table 4.

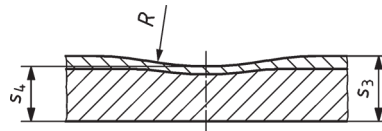
7.2.3 Type M1B

See Figure 5 and Table 4.



NOTE The groove cross-section is represented on an enlarged scale.

Figure 4 — Type M1A



NOTE The groove cross-section is represented on an enlarged scale.

Figure 5 — Type M1B

Table 4 — Nominal dimensions of lubrication grooves types M1A and M1B

Dimensions in millimetres

s_3		0,75	1	1,5	2	2,5
s_3	M1A	0,65	0,85	1,3	1,7	2,2
$s_4 - 0,2$	M1B	—	0,7	1,1	1,6	2,1
R		—	6	8	10	12

7.3 Type M2

7.3.1 General

See [Figure 6](#) and [Table 5](#).

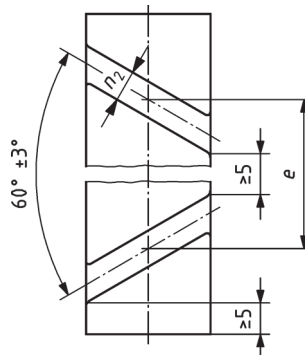


Figure 6 — Type M2 — Dimensions (see [Table 5](#))

Table 5 — Nominal dimensions of lubrication grooves type M2

Dimensions in millimetres

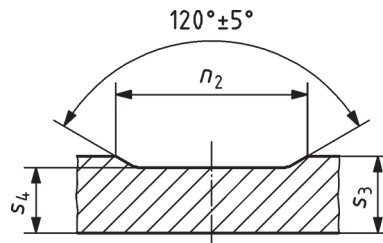
D_i nominal		e	n_2 $\pm 0,5$		
			Series (in accordance with ISO 3547-1)		
				A, B, D, W	C, E
>18	≤ 26	32	3	4	
>26	≤ 36	45	3	4	
>36	≤ 50	70	5	6	
>50	≤ 70	100	5	6	
>70	≤ 100	130	6	7	
>100		140	7	8	

7.3.2 Type M2A

See [Figure 7](#) and [Table 6](#).

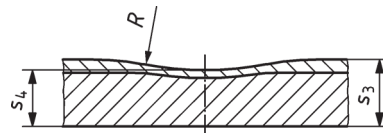
7.3.3 Type M2B

See [Figure 8](#) and [Table 6](#).



NOTE The groove cross-section is represented on an enlarged scale.

Figure 7 — Type M2A



NOTE The groove cross-section is represented on an enlarged scale.

Figure 8 — Type M2B

Table 6 — Nominal dimensions of lubrication grooves types M2A and M2B

Dimensions in millimetres

s_3		0,75	1	1,5	2	2,5
$s_{4-0,2}^0$	M2A	0,65	0,85	1,3	1,7	2,2
	M2B	—	0,7	1,1	1,6	2,1
R		—	6	8	10	12

8 Lubrication indentations

8.1 General

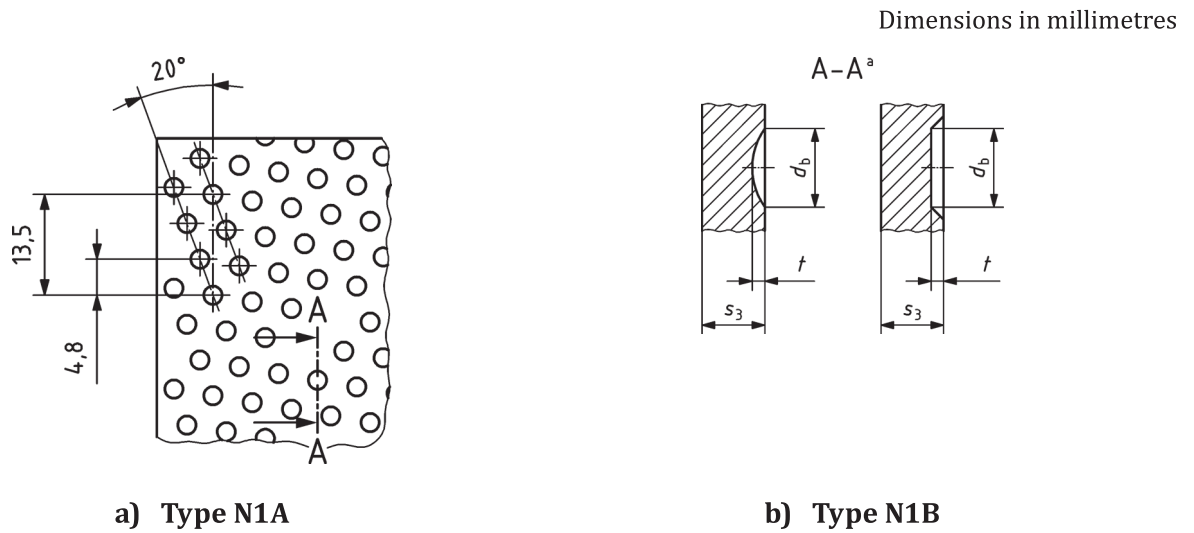
See [Figures 9](#) to [11](#) and [Tables 7](#) and [8](#). These lubrication indentations are only applicable for bushes with $s_3 \geq 1$ mm.

[Figures 9](#), [10](#) and [11](#) are examples of indentation patterns which can vary at the discretion of the supplier.

NOTE Lubrication indentations can be used alone or in conjunction with lubrication holes and/or grooves.

8.2 Types N1

This type of indentation is used for oil or grease lubrication. See [Figure 9](#) and [Table 7](#).



Key

a Section A-A is represented on an enlarged scale.

Figure 9 — Lubrication indentation — Type N1

Table 7 — Nominal dimensions of lubrication indentations types N1A and N1B

Dimensions in millimetres

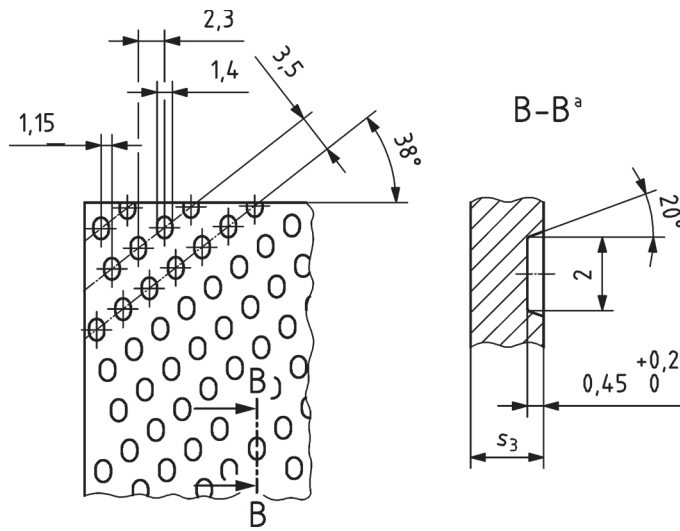
Bushes (in accordance with ISO 3547-1)	d_b	t $\pm 0,2$
Series A, B, D, W	1,5 to 3	0,4
Series C, E		0,55

8.3 Type N2

This type of indentation is used for solid or grease lubrication.

For bushes of Series A, B, D and W in accordance with ISO 3547-1, the oval-shaped lubrication indentation, N_2 (see [Figure 10](#)), is chosen at the discretion of the supplier.

Dimensions in millimetres



Key

a Section B-B is represented on an enlarged scale.

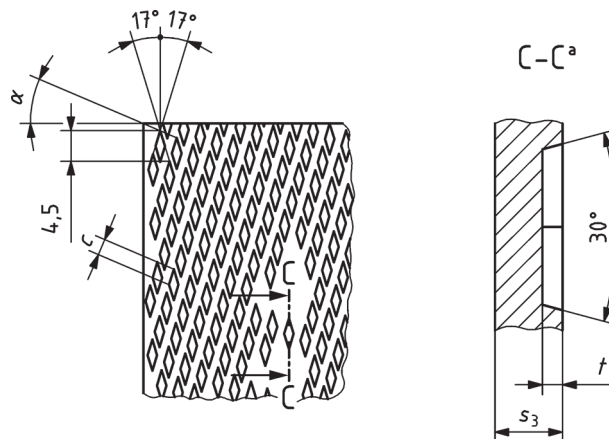
Figure 10 — Type N2

8.4 Type N3

This type of indentation is used for solid or grease lubrication.

For bushes of Series A, B, D and W, in accordance with ISO 3547-1, the diamond-shaped lubrication indentation, N3 (see [Figure 11](#)), is chosen at the discretion of the supplier.

Dimensions in millimetres



Key

a Section C-C is represented on an enlarged scale.

Figure 11 — Type N3

[Table 8](#) gives nominal dimensions of lubrication indentations type N3.

Table 8 — Nominal dimensions of lubrication indentations type N3

Dimensions in millimetres

D_i nominal		c	t $\pm 0,2$	α
	<22	1,9	0,4	20°
	>22	2,4	0,6	23°

9 Designation

The following are examples of the designation of bushes conforming to ISO 3547 (all parts).

EXAMPLE 1 A wrapped cylindrical bush (Type C) of inside diameter $D_i = 30$ mm, wall thickness deviation limit series A, having an outside diameter $D_o = 34$ mm and width $B = 20$ mm, made of a multi-layer material, code S5, in accordance with ISO 3547-4, with a lubrication hole and a circumferential groove of design M1A, and with lubrication indentations of design N1B, in accordance with this document, and where ISO 3547-2, test A, and wall thickness measurements are specified, is designated as follows:

Bush ISO 3547 — C30 A 34 × 20 — S5 — LM1A N1B — AS

NOTE “S” signifies the required wall thickness measurement in accordance with ISO 3547-7.

EXAMPLE 2 A wrapped cylindrical bush (Type C) of inside diameter $D_i = 30$ mm, wall thickness deviation limit series D, having an outside diameter $D_o = 34$ mm and width $B = 16$ mm, made of multi-layer material, code P2, in accordance with ISO 3547-4, with a lubrication hole and lubrication indentations of design N1B, and where ISO 3547-2, tests A and C, are specified, is designated as follows:

Bush ISO 3547 — C30 W 34 × 16 — P2 — L N1B — AC

Bibliography

- [1] ISO 3547-2, *Plain bearings — Wrapped bushes — Part 2: Test data for outside and inside diameters*
- [2] ISO 3547-4, *Plain bearings — Wrapped bushes — Part 4: Materials*
- [3] ISO 3547-7, *Plain bearings — Wrapped bushes — Part 7: Measurement of wall thickness of thin-walled bushes*

