



**INTERNATIONAL STANDARD ISO 702-2:2007
TECHNICAL CORRIGENDUM 1**

Published 2009-10-15

INTERNATIONAL ORGANIZATION FOR STANDARDIZATION • МЕЖДУНАРОДНАЯ ОРГАНИЗАЦИЯ ПО СТАНДАРТИЗАЦИИ • ORGANISATION INTERNATIONALE DE NORMALISATION

**Machine tools — Connecting dimensions of spindle noses and
work holding chucks —**

**Part 2:
Camlock type**

TECHNICAL CORRIGENDUM 1

Machines-outils — Dimensions d'assemblage des nez de broches et des mandrins porte-pièces —

Partie 2: Type Camlock

RECTIFICATIF TECHNIQUE 1

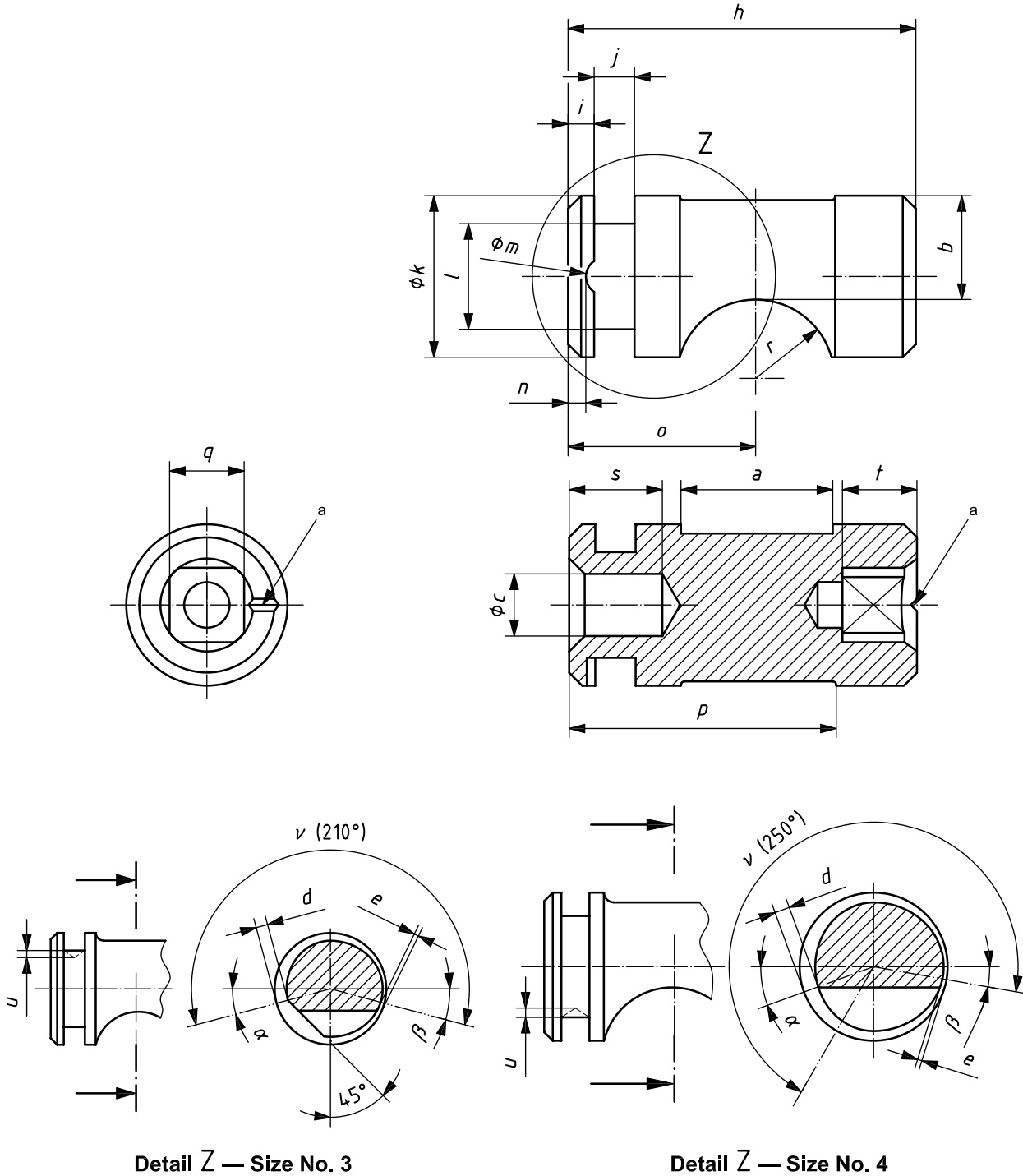
Technical Corrigendum 1 to ISO 702-2:2007 was prepared by Technical Committee ISO/TC 39, *Machine tools*, Subcommittee SC 8, *Work holding spindles and chucks*.

Page 3, Tableau 1

In the cell corresponding to row d_1 and column 15, replace the tolerance $^{+0,01}_0$ with $^{+0,016}_0$.

Replace Figure 2 with the following:

3.2 Cams



^a Reference line.

Figure 2 — Cams

In the cell corresponding to the last row, first column, replace “ $l \times 0,2$ ” with “ $l \pm 0,2$ ”.