



BSI Standards Publication

# Intelligent transport systems — Traffic and travel information via transport protocol experts group, generation 2(TPEG2)

Part 6: Message management container  
(TPEG2-MMC)

### **National foreword**

This Published Document is the UK implementation of ISO/TS 21219-6:2015.

The UK participation in its preparation was entrusted to Technical Committee EPL/278, Intelligent transport systems.

A list of organizations represented on this committee can be obtained on request to its secretary.

This publication does not purport to include all the necessary provisions of a contract. Users are responsible for its correct application.

© The British Standards Institution 2016.

Published by BSI Standards Limited 2016

ISBN 978 0 580 73217 1

ICS 03.220.01; 35.240.60

**Compliance with a British Standard cannot confer immunity from legal obligations.**

This Published Document was published under the authority of the Standards Policy and Strategy Committee on 31 December 2016.

### **Amendments/corrigenda issued since publication**

<b>Date</b>	<b>Text affected</b>
-------------	----------------------

---

**TECHNICAL  
SPECIFICATION**

**ISO/TS  
21219-6**

First edition  
2015-03-01

---

---

**Intelligent transport systems - Traffic  
and travel information via transport  
protocol experts group, generation  
2(TPEG2) —**

**Part 6:  
Message management container  
(TPEG2-MMC)**

*Systèmes intelligents de transport — Informations sur le trafic et le  
tourisme via le groupe expert du protocole de transport, génération 2  
(TPEG2) —*

*Partie 6: Conteneur de gestion de message (TPEG2-MMC)*



Reference number  
ISO/TS 21219-6:2015(E)

© ISO 2015



**COPYRIGHT PROTECTED DOCUMENT**

© ISO 2015

All rights reserved. Unless otherwise specified, no part of this publication may be reproduced or utilized otherwise in any form or by any means, electronic or mechanical, including photocopying, or posting on the internet or an intranet, without prior written permission. Permission can be requested from either ISO at the address below or ISO's member body in the country of the requester.

ISO copyright office  
Case postale 56 • CH-1211 Geneva 20  
Tel. + 41 22 749 01 11  
Fax + 41 22 749 09 47  
E-mail [copyright@iso.org](mailto:copyright@iso.org)  
Web [www.iso.org](http://www.iso.org)

Published in Switzerland

# Contents

Page

<b>Foreword</b> .....	<b>iv</b>
<b>Introduction</b> .....	<b>vi</b>
<b>1 Scope</b> .....	<b>1</b>
<b>2 Normative references</b> .....	<b>1</b>
<b>3 Terms, definitions and abbreviated terms</b> .....	<b>1</b>
3.1 Terms and definitions.....	1
3.2 Abbreviated terms.....	2
<b>4 MMC components and capabilities</b> .....	<b>2</b>
4.1 Overview.....	2
4.2 Lifecycle and identification of a TPEG message.....	6
4.3 MMCTemplate.....	6
4.4 MessageManagementContainer.....	7
4.5 MMCMasterMessage.....	7
4.6 MMCMessagePart.....	8
<b>5 MMC Datatypes</b> .....	<b>8</b>
5.1 MultiPartMessageDirectory.....	8
<b>6 MMC Tables</b> .....	<b>9</b>
6.1 mmc001:PartType.....	9
6.2 mmc002:UpdateMode.....	9
<b>Annex A (normative) Management Container, MMC, TPEG-Binary Representation</b> .....	<b>10</b>
<b>Annex B (normative) Management Container, MMC, TPEG-ML Representation</b> .....	<b>13</b>
<b>Bibliography</b> .....	<b>18</b>

## Foreword

ISO (the International Organization for Standardization) is a worldwide federation of national standards bodies (ISO member bodies). The work of preparing International Standards is normally carried out through ISO technical committees. Each member body interested in a subject for which a technical committee has been established has the right to be represented on that committee. International organizations, governmental and non-governmental, in liaison with ISO, also take part in the work. ISO collaborates closely with the International Electrotechnical Commission (IEC) on all matters of electrotechnical standardization.

The procedures used to develop this document and those intended for its further maintenance are described in the ISO/IEC Directives, Part 1. In particular the different approval criteria needed for the different types of ISO documents should be noted. This document was drafted in accordance with the editorial rules of the ISO/IEC Directives, Part 2 (see [www.iso.org/directives](http://www.iso.org/directives)).

Attention is drawn to the possibility that some of the elements of this document may be the subject of patent rights. ISO and TISA shall not be held responsible for identifying any or all such patent rights. Details of any patent rights identified during the development of the document will be in the Introduction and/or on the ISO list of patent declarations received (see [www.iso.org/patents](http://www.iso.org/patents)).

Any trade name used in this document is information given for the convenience of users and does not constitute an endorsement.

For an explanation on the meaning of ISO specific terms and expressions related to conformity assessment, as well as information about ISO's adherence to the WTO principles in the Technical Barriers to Trade (TBT) see the following URL: Foreword - Supplementary information

The committee responsible for this document is ISO/TC 204 *Intelligent transport systems*, in cooperation with the Traveller Information Services Association (TISA), TPEG Applications Working Group through Category A Liaison status.

ISO/TS 21219 consists of the following parts, under the general title *Intelligent transport systems — Traffic and travel information (TTI) via transport protocol expert group, generation 2 (TPEG2)*:

- *Part 2: UML modelling rules* [Technical Specification]
- *Part 3: UML to binary conversion rules* [Technical Specification]
- *Part 4: UML to XML conversion rules* [Technical Specification]
- *Part 5: Service framework* [Technical Specification]
- *Part 6: Message management container* [Technical Specification]
- *Part 7: Location referencing container* [Technical Specification]
- *Part 18: Traffic flow and prediction application* [Technical Specification]

The following parts are planned:

- *Part 1: Introduction, numbering and versions* [Technical Specification]
- *Part 9: Service and network information* [Technical Specification]
- *Part 10: Conditional access information* [Technical Specification]
- *Part 14: Parking information application* [Technical Specification]
- *Part 15: Traffic event compact application* [Technical Specification]
- *Part 16: Fuel price information application* [Technical Specification]

- *Part 19: Weather information application* [Technical Specification]
- *Part 20: Extended TMC location referencing* [Technical Specification]
- *Part 21: Geographic location referencing* [Technical Specification]
- *Part 22: OpenLR location referencing* [Technical Specification]
- *Part 23: Roads and multi-modal routes application* [Technical Specification]

## Introduction

### History

TPEG technology was originally proposed by the European Broadcasting Union (EBU) Broadcast Management Committee, who established the B/TPEG project group in the autumn of 1997 with a brief to develop, as soon as possible, a new protocol for broadcasting traffic and travel-related information in the multimedia environment. TPEG technology, its applications and service features were designed to enable travel-related messages to be coded, decoded, filtered and understood by humans (visually and/or audibly in the user's language) and by agent systems. Originally a byte-oriented data stream format, which may be carried on almost any digital bearer with an appropriate adaptation layer, was developed. Hierarchically structured TPEG messages from service providers to end-users were designed to transfer information from the service provider database to an end-user's equipment.

One year later in December 1998, the B/TPEG group produced its first EBU specifications. Two documents were released. Part 2 (TPEG-SSF, which became ISO/TS 18234-2) described the Syntax, Semantics and Framing structure, which was used for all TPEG applications. Meanwhile Part 4 (TPEG-RTM, which became ISO/TS 18234-4) described the first application, for Road Traffic Messages.

Subsequently in March 1999, CEN TC 278/WG 4, in conjunction with ISO/TC 204/WG 10, established a project group comprising members of the former EBU B/TPEG and they continued the work concurrently. Further parts were developed to make the initial set of four parts, enabling the implementation of a consistent service. Part 3 (TPEG-SNI, ISO/TS 18234-3) described the Service and Network Information Application, used by all service implementations to ensure appropriate referencing from one service source to another.

Part 1 (TPEG-INV, ISO/TS 18234-1), completed the series, by describing the other parts and their relationship; it also contained the application IDs used within the other parts. Additionally, Part 5, the Public Transport Information Application (TPEG-PTI, ISO/TS 18234-5), was developed. The so-called TPEG-LOC location referencing method, which enabled both map-based TPEG-decoders and non map-based ones to deliver either map-based location referencing or human readable text information, was issued as ISO/TS 18234-6 to be used in association with the other applications parts of the ISO/TS 18234-series to provide location referencing.

The ISO/TS 18234-series has become known as TPEG Generation 1.

### TPEG Generation 2

With the inauguration of the Traveller Information Services Association (TISA) in December 2007 derived from former Forums and the CEN/ISO development project group, the TPEG Applications Working Group took over development work for TPEG technology.

It was about this time that the (then) new Unified Modelling Language (UML) was seen as having major advantages for the development of new TPEG Applications in communities who would not necessarily have binary physical format skills required to extend the original TPEG TS work. It was also realized that the XML format for TPEG described within the ISO/TS 24530-series (now superseded) had a greater significance than previously foreseen; especially in the content-generation segment and that keeping two physical formats in synchronism, in different standards series, would be rather difficult.

As a result TISA set about the development of a new TPEG structure that would be UML based – this has subsequently become known as TPEG Generation 2.

TPEG2 is embodied in the ISO/TS 21219-series and it comprises many parts that cover introduction, rules, toolkit and application components. TPEG2 is built around UML modelling and has a core of rules that contain the modelling strategy covered in Parts 2, 3, 4 and the conversion to two current physical formats: binary and XML; others could be added in the future. TISA uses an automated tool to convert from the agreed UML model XMI file directly into an MS Word document file, to minimize drafting errors, that forms the Annex for each physical format.



TPEG2 has a three container conceptual structure: Message Management (Part 6), Application (many Parts) and Location Referencing (Part 7). This structure has flexible capability and can accommodate many differing use cases that have been proposed within the TTI sector and wider for hierarchical message content.

TPEG2 also has many location referencing options as required by the service provider community, any of which may be delivered by vectoring data included in the Location Referencing Container. The following classification provides a helpful grouping of the different TPEG2 parts according to their intended purpose:

Toolkit parts: TPEG2-INV (Part 1), TPEG2-UML (Part 2), TPEG2-UBCR (Part 3), TPEG2-UXCR (Part 4), TPEG2-SFW (Part 5), TPEG2-MMC (Part 6), TPEG2-LRC (Part 7)

Special applications: TPEG2-SNI (Part 9), TPEG2-CAI (Part 10)

Location referencing: TPEG2-ULR (Part 11), TPEG2-ETL (Part 20), TPEG2-GLR (Part 21), TPEG2-OLR (Part 22)

Applications: TPEG2-PKI (Part 14), TPEG2-TEC (Part 15), TPEG2-FPI (Part 16), TPEG2-TFP (Part 18), TPEG2-WEA (Part 19), TPEG2-RMR (Part 23)

TPEG2 has been developed to be broadly (but not totally) backward compatible with TPEG1 to assist in transitions from earlier implementations, while not hindering the TPEG2 innovative approach and being able to support many new features, such as dealing with applications having both long-term, unchanging content and highly dynamic content, such as Parking Information.

This Technical Specification is based on the TISA specification technical/editorial version number: TPEG2-MMC/1.1/001.



# Intelligent transport systems - Traffic and travel information via transport protocol experts group, generation 2 (TPEG2) —

## Part 6: Message management container (TPEG2-MMC)

### 1 Scope

This Technical Specification adds a basic toolkit definition to the ISO 21219 series specifying the Message Management Container (MMC), which is used by all TPEG applications to provide information about the handling of messages on the TPEG client side. The MMC holds administrative information allowing a decoder to handle the message appropriately. This information is not aimed at the end user. The MMC is a toolkit and not a stand-alone application but is included by TPEG applications.

### 2 Normative references

The following documents, in whole or in part, are normatively referenced in this document and are indispensable for its application. For dated references, only the edition cited applies. For undated references, the latest edition of the referenced document (including any amendments) applies.

ISO/TS 18234-3, *Intelligent transport systems — Traffic and travel information via transport protocol experts group, generation 1 (TPEG1) binary data format — Part 3: Service and network information (TPEG1-SNI)*

ISO/TS 21219-2, *Intelligent transport — Traffic and travel information (TTI) via transport protocol experts group, generation 2 (TPEG2) — Part 2: UML modelling rules*

ISO/TS 21219-3, *Intelligent transport systems — Traffic and travel information (TTI) via transport protocol experts group, generation 2 (TPEG2) — Part 3: UML to binary conversion rules*

ISO/TS 21219-4, *Intelligent transport systems — Traffic and travel information (TTI) via transport protocol experts group, generation 2 (TPEG2) — Part 4: UML to XML conversion rules*

### 3 Terms, definitions and abbreviated terms

#### 3.1 Terms and definitions

For the purposes of this document, the following terms and definitions apply.

##### 3.1.1

##### **Message**

unit of information that is controlled under a message ID and contains a MessageManagementContainer, MMCMasterMessage or MMCMessagePart component

##### 3.1.2

##### **Monolithic Message Management**

message management that allows versioning of messages by updating complete messages only

Note 1 to entry: See [4.1.3](#).

**3.1.3 Multipart Message Management**

message management that allows parts of messages being transmitted in packets independently

Note 1 to entry: See [4.1.4](#).

**3.1.4 Top Level Container**

any component that is on the same level as the message management container

**3.1.5 TPEG Server**

device or entity on the sending side of the TPEG transmission chain

Note 1 to entry: May consist, e.g. of a TPEG encoder, a stream encoder, a network transmission unit.

**3.1.6 TPEG Client**

device or entity on the receiving side of the TPEG transmission chain

Note 1 to entry: May consist, e.g. of a broadcast receiver, a TPEG decoder unit.

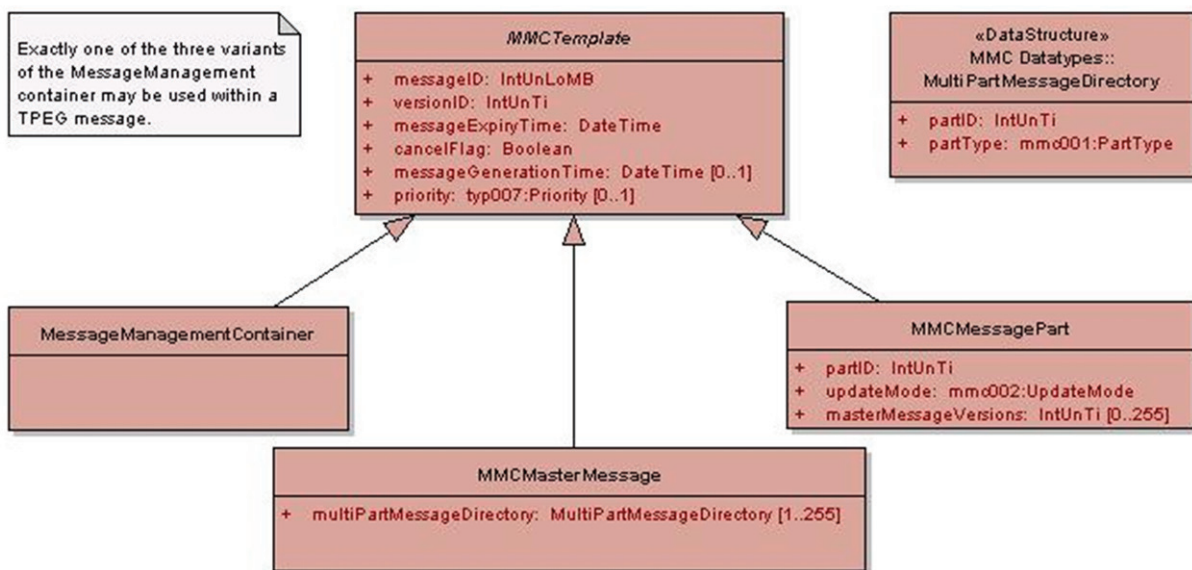
**3.2 Abbreviated terms**

- MMC Message Management Container
- LRC Location Referencing Container
- ADC Application Data Container

**4 MMC components and capabilities**

**4.1 Overview**

**4.1.1 Structure**



**Figure 1 — Structure of the Message Management Container**

### 4.1.2 Capabilities

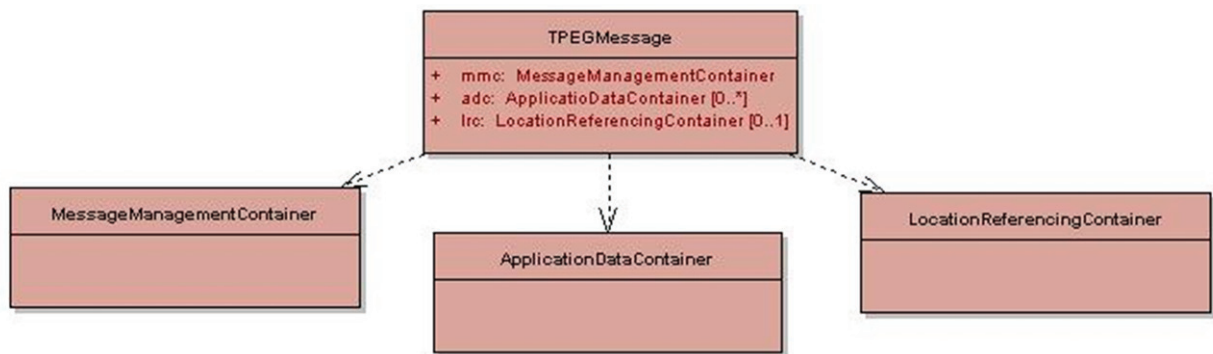
Any TPEG message typically consists of the following top level containers (see also [Figure 2](#) below):

- Exactly one Message Management Container (MMC)
- Optionally one or several Application Data Container(s) (ADC)
- Optionally one Location Reference Container (LRC)

The MMC contains no data dedicated for the user but only administrative information for the TPEG decoder to handle the message appropriately.

While the ADC part is defined specifically by the related TPEG application specification, the TPEG MMC toolkit is specified by this Technical Specification for all TPEG applications. The general capabilities and features of the MMC toolkit may be restricted or further detailed by the particular TPEG applications.

The MMC is always stereotyped as ordered component and shall be the first component in the TPEG Message. The other parts of the message may as well be stereotyped as “UnorderedComponent”.



**Figure 2 — General structure of a TPEG message**

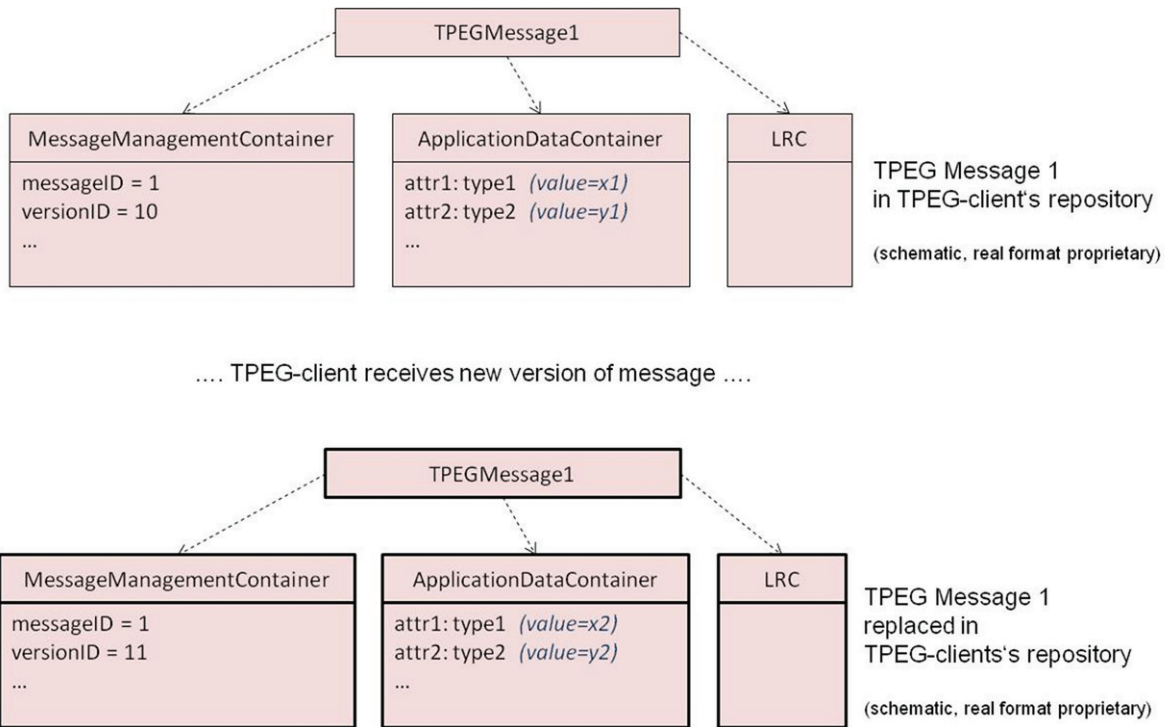
The MMC toolkit includes two basic mechanisms for message management, the Monolithic Message Management and Multipart Message Management, which are described in the following sub-clauses.

Both mechanisms exclude each other, i.e. for a given time there shall either be a message delivered by Monolithic or by Multipart Message Management. Therefore, if a TPEG Client receives a monolithic message and already has a multipart-combined message with the same messageID in its repository it shall remove this message from its repository and shall replace it by the received monolithic message. Vice versa, a monolithic message shall be replaced by a new multipart-message as well.

### 4.1.3 Monolithic Message Management

The usage of monolithic message management enables the replacement of a complete TPEG message by a more recent version of the same message. Thus, this message management method is suitable for TPEG services where most parts of the message are changing during the message updates.

The monolithic message management applies the class ‘MessageManagementContainer’ only which inherits all attributes from the parent class ‘MMCTemplate’ and adds no further ones. The replacement process described above is signalled by using the same value of the attribute ‘messageID’ and an increased value of the attribute ‘versionID’ (see [Figure 3](#) below).



**Figure 3 — Replacement of an overall message by Monolithic Message Management**

In case of a cancellation, the messageID contained in the MMC indicates the prior received message with the same messageID to be cancelled. If the messageID and versionID is identical to a previously transmitted message this signals that all attached application content, (i.e. all ADC and LRC components transmitted in the message) is identical with the previously sent content. In that case a receiver need not do a byte-by-byte content comparison of the ADC and LRC content, but nevertheless needs to check the MMC content as that may differ (e.g. a different expiration time).

#### 4.1.4 Multipart Message Management

Multipart message management enables the partial update of messages, i.e. it may be used to replace dedicated parts of a message version by version, while other parts remain unchanged. Thus, this method is suitable in particular for TPEG applications where large parts of the message content are static or quasi-static (see also 4.5 and 4.6).

The Multipart message management applies the classes ‘MMCMasterMessage’ and ‘MMCMessagePart’ (see 4.1.1). Additional to the attributes inherited from the parent class ‘MMCTemplate’, the ‘MMCMasterMessage’ container includes a list with the partial messages (attribute ‘multiPartMessageDirectory’) which shall list all partial messages of the overall/combined message. The master-message shall contain the ‘MMCMasterMessage’ container only and no ADC or LRC information. The latter containers shall be included in the corresponding partial messages, which are indicated by the ‘MMCMessagePart’ type MMC.

The master message and each of the related partial messages shall have the same ‘messageID’ but shall have an independent versioning, i.e. all parts can have a different ‘versionID’ and the value of this attribute refers to the related message part. Therefore, the TPEG Client has to store the ‘versionID’ of the most recently received version of each partial message to manage the partial updates of the messages. In particular, the stored combined message shall be updated by a received partial message only if the ‘versionID’ of the partial message is more recent than the stored ‘versionID’ of the same partial message.

If the content of the multiPartMessageDirectory has been modified, i.e. the version ID of the ‘MMCMasterMessage’ is changed, all related partial messages sent before are not valid anymore. A TPEG Client shall then rebuild the message completely by receiving the up-to-date partial messages.

Currently, there is one update feature ('replaceTopLevel') defined for partial messages which is signalled by the 'updateMode' attribute of the 'MMCMMessagePart' component. Other update modes may be added in future versions.

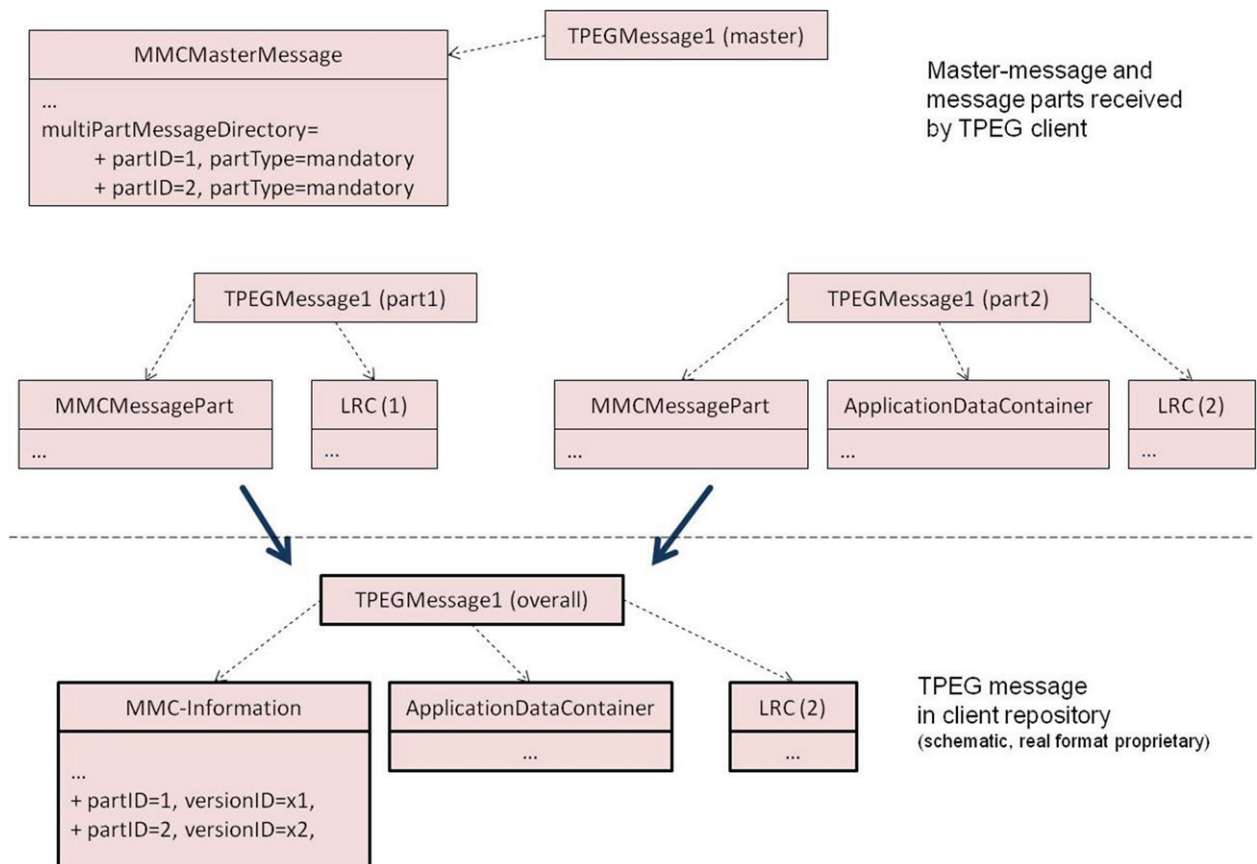
#### 4.1.4.1 Update mode 'replaceTopLevel'

This feature may be used to replace or add components in the combined message by the components transmitted by the partial message. The components included by the partial message shall be a sub-tree of the overall message structure, starting with one of the ADC or LDC components as root component. This means that the partial message will update the Application Data or Location Referencing Containers and its related sub-components. Therefore, this feature is an enhancement of the monolithic message management where only an overall message can be replaced/added.

If one or several of the components contained in the partial message are present in the so far stored combined message, these components shall be replaced. If one or several of the components contained in the partial message are not yet present in the so far stored combined message these components shall be added to the combined message.

As only complete components are added/replaced, each of the components contained in the partial message shall include all attributes which are intended to be part of the combined message.

If a combined message contains more than one component of the same component type at a given position within the message structure, all these components shall be replaced by the one(s) contained in the partial message. In particular an array of components (multiplicity [0..\*] or [1..\*]) shall be replaced completely by the updating message.



**Figure 4 — Example addition/replacement of top level containers by partial messages**

## 4.2 Lifecycle and identification of a TPEG message

TPEG messages or partial messages have the following life-cycle stages which are signalled by the value of the attribute 'versionID' (see also attribute definition in 4.3):

- First transmission: The value of 'versionID' should be 0
- Message Updates: When the content of a message is updated, i.e. the ADC and/or LRC parts are changing, the versionID value shall be incremented for each new version. This increment should be 1. If the value exceeds 255 it shall be set to a value <255 (wrap around); This value should be 0. In the case of wrap around the TPEG Server shall ensure, that the last usage of the messageExpiryTime for a message with that versionID has expired, before the wrap around appears.
- Cancellation: When a message is not valid anymore the TPEG Server may send a cancellation message with the corresponding 'messageID' value of the message. A cancellation shall result in an incremented versionID with respect to the message it cancels as a cancellation indicates a change in content. The usage of the message cancellation has to be detailed by the particular TPEG application specifications.
- Message expiration: If the current time has progressed beyond the messageExpiryTime of the last received version of the message, the message shall be considered as invalid and not be presented to the user anymore. Message expiration shall be supported both by the client and the server side.

The 'messageID' shall be unique within a dedicated TPEG Service Component. The latter is identified worldwide uniquely by its Application and Content Identification (ACID) which is formed by the TPEG ServiceID, the Content Identification (COID) and Application Identification (AID) as described in the SNI specification (see ISO/TS 18234-3).

A TPEG Client shall not rely on the uniqueness of the messageID and versionID once a message is expired. A TPEG Client shall not rely on the versionID to be incremented by 1 as, e.g. message updates may be lost during transmission.

## 4.3 MMCTemplate

The abstract component MMCTemplate provides basic attributes for the child components MessageManagementContainer, MMCMasterMessage and MMCMessagePart (see the following subclauses). Applications shall not reference the MMCTemplate component, but one or several of the derived components instead.

Name	Type	Multiplicity	Description
messageID	IntUnLoMB	1	Unique identifier for a message relating to a particular event transmitted in a particular TPEG service component.
versionID	IntUnTi	1	<p>Serial number that distinguishes successive versions of one message in case of message updates. The versionID numbers shall be used incrementally, enabling to track the update progress of a message from first transmission, through updates to cancellation. Wrap around is applied, i.e. the versionID following 255 shall be set to a value &lt;255.</p> <p>The versionID shall change every time the content of a message change. Changes of the message management container only shall not cause a change of the versionID. If for example only the message expiry time in the message management container is changed, the versionID remains unchanged.</p> <p>To avoid ambiguous situations when a wrap around occurs, the following two rules apply:</p> <ul style="list-style-type: none"> <li>- Not more than one version of a message shall be on air in a service component at the same time within a service with identical service ID.</li> <li>- The message expiry time has to be set in an appropriate way.</li> </ul> <p>If a message with the same messageID, but a lower version number is received, a wrap around has occurred if the expiry time of the last received message is later.</p>



Name	Type	Multiplicity	Description
messageExpiryTime	DateTime	1	If the current time is later than the messageExpiryTime, the message shall be considered as invalid and the TPEG Client device shall therefore not present it to the user anymore. When the validity of the message contents for the user is to be maintained, the TPEG Server shall send the message, or a newer version thereof before the message expires. Expiry times are transmission specific and may differ dependent on the particular transmission conditions.
cancelFlag	Boolean	1	This flag shall be set (true), if a message, identified by its messageID, is no longer valid and has to be removed in the client device. The message body of messages with a set cancelFlag shall be empty.
messageGenerationTime	DateTime	0..1	Date and time when the message was inserted into the delivery channel. Message generation time provides a system diagnostic tool to determine delays in the transmission chain. End-user devices should ignore this value.
Priority	typ007:Priority	0..1	Messages with higher priority should be decoded or processed prior to other messages if resources in the client device are limited. This is a relative indicator only; it is not directly related to the priority of the content. For example, a new message might have a higher priority than another one with similar content that has been on air for some time.

#### 4.4 MessageManagementContainer

The MessageManagementContainer component inherits all attributes from the abstract component MMCTemplate. No more attributes are added.

Name	Type	Multiplicity	Description
messageID	IntUnLoMB	1	see <a href="#">4.3</a>
versionID	IntUnTi	1	see <a href="#">4.3</a>
messageExpiryTime	DateTime	1	see <a href="#">4.3</a>
cancelFlag	Boolean	1	see <a href="#">4.3</a>
messageGenerationTime	DateTime	0..1	see <a href="#">4.3</a>
Priority	typ007:Priority	0..1	see <a href="#">4.3</a>

#### 4.5 MMCMasterMessage

Where parts of messages are updated dynamically, i.e. where parts are replaced or omitted without retransmission of complete messages, one MMCMasterMessage and a number of partial messages have to be transmitted. The TPEG Server has to take care for sending the MMCMasterMessage within a reasonable time frame, i.e. at least within the message expiry time of the message parts, as no decoding of the message is possible until the MMCMasterMessage has been received.

There shall only be one MMCMasterMessage per messageID in the transmission channel at any time.

The master message connects all MMCMessageParts through the multiPartMessageDirectory listing.

For each entry in the ‘multiPartMessageDirectory’, one message with a MMCMasterMessagePart container shall be added to the transmission cycle. The messageID of these partial messages shall be identical with the one of the MMCMasterMessage.

Name	Type	Multiplicity	Description
messageID	IntUnLoMB	1	see 4.3
versionID	IntUnTi	1	see 4.3
messageExpiryTime	DateTime	1	see 4.3
cancelFlag	Boolean	1	see 4.3
messageGenerationTime	DateTime	0..1	see 4.3
priority	typ007:Priority	0..1	see 4.3
multiPartMessageDirectory	MultiPartMessageDirectory	1..255	List of MultiPartMessageDirectory entries, referencing all partial messages to be expected and their type indicating whether they are optional or mandatory. There shall be one entry per partial message in the multiPartMessageDirectory

#### 4.6 MMCMasterMessagePart

A message using the MMCMasterMessagePart component is a partial message, which is transmitted separately from the MMCMasterMessage. This message shall not be interpreted before the master message and all mandatory partial messages defined therein have been received.

The messageID shall be identical to the messageID of the master message. All other attributes are completely independent.

Name	Type	Multiplicity	Description
messageID	IntUnLoMB	1	see 4.3
versionID	IntUnTi	1	see 4.3
messageExpiryTime	DateTime	1	see 4.3
cancelFlag	Boolean	1	see 4.3
messageGenerationTime	DateTime	0..1	see 4.3
priority	typ007:Priority	0..1	see 4.3
partID	IntUnTi	1	Unique ID of the partial message among all messages with the same messageID.
updateMode	mmc002:UpdateMode	1	Defines how the content of the partial message has to be merged with the overall message content.
masterMessageVersions	IntUnTi	0..255	This attribute may be used, if a partial message is only valid for special versions of the master message. If omitted, the partial message shall be applied to any, not expired, version of the master message.

### 5 MMC Datatypes

#### 5.1 MultiPartMessageDirectory

Datastructure containing a partID and a partType attribute. This pair is used to reference a partial message and to specify whether a partial message has to be received or not before the presentation of the message to the user.

Name	Type	Multiplicity	Description
partID	IntUnTi	1	Unique ID of the partial message.
partType	mmc001:PartType	1	Defines the role of this partial message within the combined message.

## 6 MMC Tables

### 6.1 mmc001:PartType

This table holds the message part type instruction for the client device.

Code	Name	Comment
001	mandatory	The partial message is essential to present the overall message to the user.
002	additional	The partial message contains additional information. The overall message may be presented to the user, even if this partial message has not been received, or if it has expired.

### 6.2 mmc002:UpdateMode

This table holds the update mode instruction for the client device.

Code	Name	Comment
001	replaceTopLevel	See <a href="#">4.1.4</a>
002	rfu	Reserved for the 'replaceAttributesWhileKeepingStructure' feature, which may be added in a future version:  The structure of the overall message is maintained. All attribute values that are contained in the components of the partial message shall replace the corresponding components attributes in the combined message.
003	rfu-	Reserved for the 'addInformation' feature, which may be added in a future version:  The information is independent of the information contained in the overall message. Decoders shall add the contained information components to the combined message unless the message part with this partID has already been added to the combined message. In this case the already added information is replaced by updated versions.

## Annex A (normative)

### Management Container, MMC, TPEG-Binary Representation

This Annex defines the TPEG binary representation (see TISA Specification, TPEG2 UML Conversion Rules: TPEG binary format) of the MMC that shall be used by all future TPEG applications.

#### A.1 Message Components

##### A.1.1 Generic Component Ids

As the MMC is a toolkit and no application no Generic Component Ids (GCIDs) are defined here. The GCIDs of the MMC components are assigned by the particular TPEG applications.

##### A.1.2 MMCTemplate

<b>&lt;MMCTemplate(x)&gt;:=</b>	: Abstract class, no instantiation,: see <a href="#">4.3</a>
<b>&lt;IntUnTi&gt;(x),</b>	: Identifier, is defined by the instance
<b>&lt;IntUnLoMB&gt;(lengthComp),</b>	: Length of component in bytes, excluding the id and length indicator
<b>&lt;IntUnLoMB&gt;(lengthAttr),</b>	: Length of attributes of this component in bytes
<b>&lt;IntUnLoMB&gt;(messageID),</b>	: see <a href="#">4.3</a>
<b>&lt;IntUnTi&gt;(versionID),</b>	: see <a href="#">4.3</a>
<b>&lt;DateTime&gt;(messageExpiryTime),</b>	: see <a href="#">4.3</a>
<b>&lt;BitArray&gt;(selector),</b>	: 1 byte containing 3 switches.
If (bit 0 of selector is set)	
<b>&lt;Boolean&gt;(cancelFlag),</b>	: see <a href="#">4.3</a>
If (bit 1 of selector is set)	
<b>&lt;DateTime&gt;(messageGenerationTime),</b>	: see <a href="#">4.3</a>
If (bit 2 of selector is set)	
<b>&lt;typ007:Priority&gt;(priority);</b>	: see <a href="#">4.3</a>

##### A.1.3 MessageManagementContainer

<b>&lt;MessageManagementContainer(x)&lt;MMCTemplate(x)&gt;:=</b>	-
<b>&lt;IntUnTi&gt;(x),</b>	: Identifier, is defined by the instance
<b>&lt;IntUnLoMB&gt;(lengthComp),</b>	: Length of component in bytes, excluding the id and length indicator
<b>&lt;IntUnLoMB&gt;(lengthAttr),</b>	: Length of attributes of this component in bytes
<b>&lt;IntUnLoMB&gt;(messageID),</b>	: see <a href="#">4.4</a>
<b>&lt;IntUnTi&gt;(versionID),</b>	: see <a href="#">4.4</a>
<b>&lt;DateTime&gt;(messageExpiryTime),</b>	: see <a href="#">4.4</a>
<b>&lt;BitArray&gt;(selector),</b>	: 1 byte containing 3 switches.
If (bit 0 of selector is set)	
<b>&lt;Boolean&gt;(cancelFlag),</b>	: see <a href="#">4.4</a>

If (bit 1 of selector is set)	<b>&lt;DateTime&gt;</b> (messageGenerationTime),	: see <a href="#">4.4</a>
If (bit 2 of selector is set)	<b>&lt;typ007:Priority&gt;</b> (priority);	: see <a href="#">4.4</a>

#### A.1.4 MMCMasterMessage

<b>&lt;MMCMasterMessage(x)&lt;MMCTemplate(x)&gt;&gt;:=</b>		
<b>&lt;IntUnTi &gt;</b> (x),		: Identifier, is defined by the instance
<b>&lt;IntUnLoMB &gt;</b> (lengthComp),		: Length of component in bytes, excluding the id and length indicator
<b>&lt;IntUnLoMB&gt;</b> (lengthAttr),		: Length of attributes of this component in bytes
<b>&lt;IntUnLoMB&gt;</b> (messageID),		: see <a href="#">4.5</a>
<b>&lt;IntUnTi&gt;</b> (versionID),		: see <a href="#">4.5</a>
<b>&lt;DateTime&gt;</b> (messageExpiryTime),		: see <a href="#">4.5</a>
<b>&lt;BitArray&gt;</b> (selector),		: 1 byte containing 3 switches.
If (bit 0 of selector is set)	<b>&lt;Boolean&gt;</b> (cancelFlag),	: see <a href="#">4.5</a>
If (bit 1 of selector is set)	<b>&lt;DateTime&gt;</b> (messageGenerationTime),	: see <a href="#">4.5</a>
If (bit 2 of selector is set)	<b>&lt;typ007:Priority&gt;</b> (priority),	: see <a href="#">4.5</a>
	<b>&lt;IntUnLoMB&gt;</b> (n),	: Number of entries in array attribute, between 1 and 255.
n * <b>&lt;MultiPartMessageDirectory&gt;</b> \		: see <a href="#">4.5</a>
	<b>\(multiPartMessageDirectory) [1..255];</b>	

#### A.1.5 MMCMessagePart

<b>&lt;MMCMessagePart(x)&lt;MMCTemplate(x)&gt;&gt;:=</b>		
<b>&lt;IntUnTi&gt;</b> (x),		: Identifier, is defined by the instance
<b>&lt;IntUnLoMB&gt;</b> (lengthComp),		: Length of component in bytes, excluding the id and length indicator
<b>&lt;IntUnLoMB&gt;</b> (lengthAttr),		: Length of attributes of this component in bytes
<b>&lt;IntUnLoMB&gt;</b> (messageID),		: see <a href="#">4.6</a>
<b>&lt;IntUnTi&gt;</b> (versionID),		: see <a href="#">4.6</a>
<b>&lt;DateTime&gt;</b> (messageExpiryTime),		: see <a href="#">4.6</a>
<b>&lt;BitArray&gt;</b> (selector),		: 1 byte containing 4 switches.
If (bit 0 of selector is set)	<b>&lt;Boolean&gt;</b> (cancelFlag),	: see <a href="#">4.6</a>
If (bit 1 of selector is set)	<b>&lt;DateTime&gt;</b> (messageGenerationTime),	: see <a href="#">4.6</a>
If (bit 2 of selector is set)	<b>&lt;typ007:Priority&gt;</b> (priority),	: see <a href="#">4.6</a>
	<b>&lt;IntUnTi&gt;</b> (partID),	: see <a href="#">4.6</a>
	<b>&lt;mmc002:UpdateMode&gt;</b> (updateMode),	: see <a href="#">4.6</a>
If (bit 3 of selector is set) {		
	<b>&lt;IntUnLoMB&gt;</b> (n),	: Number of entries in array attribute, between 0 and 255.

```
N * <IntUnTi>\
  \(\masterMessageVersions) [0..255]
};
```

## A.2 Datatypes

### A.2.1 MultiPartMessageDirectory

<b>&lt;MultiPartMessageDirectory&gt;:=</b>	
<b>&lt;IntUnTi&gt;</b> (partID),	: Unique ID of the partial message.
<b>&lt;mmc002:PartType&gt;</b> (partType);	: Defines the role of this partial message within the combined message.

## Annex B (normative)

### Management Container, MMC, TPEG-ML Representation

**NOTE** In the course of ISO processing, XML-compliant quotation marks are replaced with non-compliant quotation marks. When taking over material from these sections, be advised to substitute any double quote to the XML-compliant equivalent quotation mark (Unicode U +0022).

#### B.1 General

This section contains the tpegML physical format (see TISA Specification, TPEG2 UML Conversion Rules: tpegML forma) representation of the Message Management Container.

#### B.2 XSD Schema Framing

The schema definition of this toolkit is maintained in an xsd file (see <http://www.w3.org/XML/Schema>), where the actual definitions are embedded in the following xml framing:

```
<?xml version="1.0" encoding="UTF-8" ?>
<xs:schema xmlns="http://www.tisa.org/TPEG/MMC_1_1"
  xmlns:xs="http://www.w3.org/2001/XMLSchema"
  targetNamespace="http://www.tisa.org/TPEG/MMC_1_1"
  xmlns:tdt="http://www.tisa.org/TPEG/TPEGDataTypes_0_0"
  elementFormDefault="qualified"
  attributeFormDefault="qualified"/>
</xs:schema>
```

#### B.3 Element Definition

##### B.3.1 MMCTemplate

```
<xs:complexType name="MMCTemplate" abstract="true">
  <xs:sequence>
    <xs:element name="messageID" type="tdt:IntUnLoMB"/>
    <xs:element name="versionID" type="tdt:IntUnTi"/>
    <xs:element name="messageExpiryTime" type="tdt:DateTime"/>
    <xs:element name="cancelFlag" type="tdt:Boolean"/>
    <xs:element name="messageGenerationTime" type="tdt:DateTime" minOccurs="0"/>
    <xs:element name="priority" type="tdt:typ007_Priority" minOccurs="0"/>
  </xs:sequence>
</xs:complexType>
```

This element is never directly instantiated in the xml data, instead one of the derived elements is always used. However, if an application wants to automatically enable multi part message management, the MMCTemplate is used as a data type in the UML, it then appears in the xml with the xs:type attribute containing the name of the actual instantiated child type.

##### B.3.2 MessageManagementContainer

```
<xs:complexType name="MessageManagementContainer">
  <xs:complexContent>
    <xs:extension base="MMCTemplate">
    </xs:extension>
  </xs:complexContent>
</xs:complexType>
```

##### B.3.3 MMCMasterMessage

```
<xs:complexType name="MMCMasterMessage">
  <xs:complexContent>
    <xs:extension base="MMCTemplate">
      <xs:element name="multiPartMessageDirectory" type="MultiPartMessageDirectory"
maxOccurs="255"/>
    </xs:extension>
  </xs:complexContent>
</xs:complexType>
```

### B.3.4 MMCMessagesPart

```
<xs:complexType name="MMCMessagesPart">
  <xs:complexContent>
    <xs:extension base="MMCTemplate">
      <xs:element name="partID" type="tdt:IntUnTi"/>
      <xs:element name="updateMode" type="mmc002_UpdateMode"/>
      <xs:element name="masterMessageVersions" type="tdt:IntUnTi" minOccurs="0" max-
Occurs="255"/>
    </xs:extension>
  </xs:complexContent>
</xs:complexType>
```

## B.4 Data Types

### B.4.1 MultipartMessageDirectory

```
<xs:complexType name="MultiPartMessageDirectory">
  <xs:sequence>
    <xs:element name="partID" type="tdt:IntUnTi"/>
    <xs:element name="partType" type="mmc001_PartType"/>
  </xs:sequence>
</xs:complexType>
```

## B.5 MMC Tables

### B.5.1 mmc001\_PartType

```
<xs:complexType name="mmc001_PartType">
  <xs:attribute name="table" type="xs:string" fixed="mmc001_PartType" use="
required"/>
  <xs:attribute name="code" use="required">
    <xs:simpleType>
      <xs:restriction base="xs:unsignedByte">
        <xs:minInclusive value="1"/>
        <xs:maxInclusive value="2"/>
      </xs:restriction>
    </xs:simpleType>
  </xs:attribute>
</xs:complexType>
```

### B.6 mmc002\_UpdateMode

```
<xs:complexType name="mmc002_UpdateMode">
  <xs:attribute name="table" type="xs:string" fixed="mmc002_UpdateMode" use="
required"/>
  <xs:attribute name="code" use="required">
    <xs:simpleType>
      <xs:restriction base="xs:unsignedByte">
        <xs:minInclusive value="1"/>
        <xs:maxInclusive value="1"/>
      </xs:restriction>
    </xs:simpleType>
  </xs:attribute>
</xs:complexType>
```



## B.7 tpegML Samples

### B.7.1 Direct Instantiation

This xml snippet is an example on how an MMC container may look in a TPEG application if a derived class is directly used.

Application XSD example:

```
<xs:element name="mmt" type="MessageManagementContainer" />...
```

...

XML example:

```
<TPEGExampleApplicationMessage xmlns:tdt="http://www.tisa.org/TPEG/AbstractDataTypes_0_0">
  <mmt xmlns:mmc="http://www.tisa.org/TPEG/MMC_1_1">
    <mmc:messageID>1</mmc:messageID>
    <mmc:versionID>3</mmc:versionID>
    <mmc:messageExpiryTime> 2009-04-21T18:30:00Z </mmc:messageExpiryTime >
    <mmc:cancelFlag>False</mmc:cancelFlag>
  </mmt>
  ...
</TPEGExampleApplicationMessage>
```

### B.7.2 Indirect Instantiation

This xml snippet is an example of how an MMC container may look in an TPEG application if the MMCTemplate is used as a placeholder for the instantiated child:

Application XSD example:

```
<xs:element name="mmt" type="MMCTemplate" />
```

...

XML example:

```
<TPEGExampleApplicationMessage xmlns:tdt="http://www.tisa.org/TPEG/AbstractDataTypes_0_0">
  <mmt xmlns:mmc="http://www.tisa.org/TPEG/MMC_1_1" xs:type="MMCMasterMessage">
    <mmc:messageID>1</mmc:messageID>
    <mmc:versionID>3</mmc:versionID>
    <mmc:messageExpiryTime>2009-04-21T18:30:00Z </mmc:messageExpiryTime>
    <mmc:cancelFlag>False</mmc:cancelFlag>
    <mmc:multiPartMessageDirectory>
      ...
    </mmc>
  </mmt>
  ...
</TPEGExampleApplicationMessage>
<TPEGExampleApplicationMessage xmlns:tdt="http://www.tisa.org/TPEG/AbstractDataTypes_0_0">
  <mmt xmlns:mmc="http://www.tisa.org/TPEG/MMC_1_1" xs:type="MMCMessagePart">
    <mmc:messageID>1</mmc:messageID>
    <mmc:versionID>3</mmc:versionID>
    <mmc:messageExpiryTime>2009-04-21T18:30:00Z </mmc:messageExpiryTime>
    <mmc:cancelFlag>False</mmc:cancelFlag>
    <mmc:partID>
      ...
    </mmc>
  </mmt>
  ...
</TPEGExampleApplicationMessage>
```

## B.8 Full MMC Schema Definition

```
<?xml version="1.0" encoding="UTF-8"?>
<xs:schema xmlns="http://www.tisa.org/TPEG/MMC_1_1"
  xmlns:xs="http://www.w3.org/2001/XMLSchema"
  targetNamespace="http://www.tisa.org/TPEG/MMC_1_1"
  xmlns:tdt="http://www.tisa.org/TPEG/AbstractDataTypes_0_0"
  elementFormDefault="qualified">
```

```
        attributeFormDefault="qualified">

<xs:complexType name="MMCTemplate" abstract="true">
  <xs:sequence>
    <xs:element name="messageID" type="tdt:IntUnLoMB"/>
    <xs:element name="versionID" type="tdt:IntUnTi"/>
    <xs:element name="messageExpiryTime" type="tdt:DateTime"/>
    <xs:element name="cancelFlag" type="tdt:Boolean"/>
    <xs:element name="messageGenerationTime" type="tdt:DateTime" minOccurs="0"/>
    <xs:element name="priority" type="tdt:typ007_Priority" minOccurs="0"/>
  </xs:sequence>
</xs:complexType>

<xs:complexType name="MessageManagementContainer">
  <xs:complexContent>
    <xs:extention base="MMCTemplate">
    </xs:extention>
  </xs:complexContent>
</xs:complexType>

<xs:complexType name="MMCMasterMessage">
  <xs:complexContent>
    <xs:extention base="MMCTemplate">
      <xs:element name="multiPartMessageDirectory" type="MultiPartMessageDirectory" maxOc-
cursor="255"/>
    </xs:extention>
  </xs:complexContent>
</xs:complexType>

<xs:complexType name="MMCMessagePart">
  <xs:complexContent>
    <xs:extention base="MMCTemplate">
      <xs:element name="partID" type=" tdt:IntUnTi"/>
      <xs:element name="updateMode" type="mmc002_UpdateMode"/>
      <xs:element name="masterMessageVersions" type=" tdt:IntUnTi" minOccurs="0" maxOc-
cursor="255"/>
    </xs:extention>
  </xs:complexContent>
</xs:complexType>

<xs:complexType name="MultiPartMessageDirectory">
  <xs:sequence>
    <xs:element name="partID" type=" tdt:IntUnTi"/>
    <xs:element name="partType" type="mmc001_PartType"/>
  </xs:sequence>
</xs:complexType>

<xs:complexType name="mmc001_PartType">
  <xs:attribute name="table" type="xs:string" fixed="mmc001_PartType" use="required"/>
  <xs:attribute name="code" use="required">
    <xs:simpleType>
      <xs:restriction base="xs:unsignedByte">
        <xs:minInclusive value="1"/>
        <xs:maxInclusive value="2"/>
      </xs:restriction>
    </xs:simpleType>
  </xs:attribute>
</xs:complexType>

<xs:complexType name="mmc002_UpdateMode">
  <xs:attribute name="table" type="xs:string" fixed="mmc002_UpdateMode" use="required"/>
  <xs:attribute name="code" use="required">
    <xs:simpleType>
      <xs:restriction base="xs:unsignedByte">
        <xs:minInclusive value="1"/>
        <xs:maxInclusive value="1"/>
      </xs:restriction>
    </xs:simpleType>
  </xs:attribute>
</xs:complexType>
```

</xs: schema>

## Bibliography

- [1] <XML Schema Definition, <http://www.w3.org/XML/Schema>



# British Standards Institution (BSI)

BSI is the national body responsible for preparing British Standards and other standards-related publications, information and services.

BSI is incorporated by Royal Charter. British Standards and other standardization products are published by BSI Standards Limited.

## About us

We bring together business, industry, government, consumers, innovators and others to shape their combined experience and expertise into standards-based solutions.

The knowledge embodied in our standards has been carefully assembled in a dependable format and refined through our open consultation process. Organizations of all sizes and across all sectors choose standards to help them achieve their goals.

## Information on standards

We can provide you with the knowledge that your organization needs to succeed. Find out more about British Standards by visiting our website at [bsigroup.com/standards](http://bsigroup.com/standards) or contacting our Customer Services team or Knowledge Centre.

## Buying standards

You can buy and download PDF versions of BSI publications, including British and adopted European and international standards, through our website at [bsigroup.com/shop](http://bsigroup.com/shop), where hard copies can also be purchased.

If you need international and foreign standards from other Standards Development Organizations, hard copies can be ordered from our Customer Services team.

## Copyright in BSI publications

All the content in BSI publications, including British Standards, is the property of and copyrighted by BSI or some person or entity that owns copyright in the information used (such as the international standardization bodies) and has formally licensed such information to BSI for commercial publication and use.

Save for the provisions below, you may not transfer, share or disseminate any portion of the standard to any other person. You may not adapt, distribute, commercially exploit, or publicly display the standard or any portion thereof in any manner whatsoever without BSI's prior written consent.

## Storing and using standards

Standards purchased in soft copy format:

- A British Standard purchased in soft copy format is licensed to a sole named user for personal or internal company use only.
- The standard may be stored on more than 1 device provided that it is accessible by the sole named user only and that only 1 copy is accessed at any one time.
- A single paper copy may be printed for personal or internal company use only.

Standards purchased in hard copy format:

- A British Standard purchased in hard copy format is for personal or internal company use only.
- It may not be further reproduced – in any format – to create an additional copy. This includes scanning of the document.

If you need more than 1 copy of the document, or if you wish to share the document on an internal network, you can save money by choosing a subscription product (see 'Subscriptions').

## Reproducing extracts

For permission to reproduce content from BSI publications contact the BSI Copyright & Licensing team.

## Subscriptions

Our range of subscription services are designed to make using standards easier for you. For further information on our subscription products go to [bsigroup.com/subscriptions](http://bsigroup.com/subscriptions).

With **British Standards Online (BSOL)** you'll have instant access to over 55,000 British and adopted European and international standards from your desktop. It's available 24/7 and is refreshed daily so you'll always be up to date.

You can keep in touch with standards developments and receive substantial discounts on the purchase price of standards, both in single copy and subscription format, by becoming a **BSI Subscribing Member**.

**PLUS** is an updating service exclusive to BSI Subscribing Members. You will automatically receive the latest hard copy of your standards when they're revised or replaced.

To find out more about becoming a BSI Subscribing Member and the benefits of membership, please visit [bsigroup.com/shop](http://bsigroup.com/shop).

With a **Multi-User Network Licence (MUNL)** you are able to host standards publications on your intranet. Licences can cover as few or as many users as you wish. With updates supplied as soon as they're available, you can be sure your documentation is current. For further information, email [subscriptions@bsigroup.com](mailto:subscriptions@bsigroup.com).

## Revisions

Our British Standards and other publications are updated by amendment or revision.

We continually improve the quality of our products and services to benefit your business. If you find an inaccuracy or ambiguity within a British Standard or other BSI publication please inform the Knowledge Centre.

## Useful Contacts

### Customer Services

**Tel:** +44 345 086 9001

**Email (orders):** [orders@bsigroup.com](mailto:orders@bsigroup.com)

**Email (enquiries):** [cservices@bsigroup.com](mailto:cservices@bsigroup.com)

### Subscriptions

**Tel:** +44 345 086 9001

**Email:** [subscriptions@bsigroup.com](mailto:subscriptions@bsigroup.com)

### Knowledge Centre

**Tel:** +44 20 8996 7004

**Email:** [knowledgecentre@bsigroup.com](mailto:knowledgecentre@bsigroup.com)

### Copyright & Licensing

**Tel:** +44 20 8996 7070

**Email:** [copyright@bsigroup.com](mailto:copyright@bsigroup.com)

### BSI Group Headquarters

389 Chiswick High Road London W4 4AL UK