



BSI Standards Publication

Wheelchair seating

Part 11: Determination of perspiration
dissipation characteristics of seat cushions
intended to manage tissue integrity

National foreword

This Published Document is the UK implementation of ISO/TS 16840-11:2014.

The UK participation in its preparation was entrusted by Technical Committee CH/173, Assistive products for persons with disability, to Subcommittee CH/173/1, Wheelchairs.

A list of organizations represented on this committee can be obtained on request to its secretary.

This publication does not purport to include all the necessary provisions of a contract. Users are responsible for its correct application.

© The British Standards Institution 2014.
Published by BSI Standards Limited 2014

ISBN 978 0 580 83023 5
ICS 11.180.10

Compliance with a British Standard cannot confer immunity from legal obligations.

This Published Document was published under the authority of the Standards Policy and Strategy Committee on 30 June 2014.

Amendments/corrigenda issued since publication

Date	Text affected
-------------	----------------------

TECHNICAL
SPECIFICATION

ISO/TS
16840-11

First edition
2014-02-01

Wheelchair seating —

Part 11:

**Determination of perspiration
dissipation characteristics of seat
cushions intended to manage tissue
integrity**

Sièges de fauteuils roulants —

*Partie 11: Détermination des caractéristiques de dissipation de la
transpiration des coussins de siège censés gérer l'intégrité du tissu*



Reference number
ISO/TS 16840-11:2014(E)

© ISO 2014



COPYRIGHT PROTECTED DOCUMENT

© ISO 2014

All rights reserved. Unless otherwise specified, no part of this publication may be reproduced or utilized otherwise in any form or by any means, electronic or mechanical, including photocopying, or posting on the internet or an intranet, without prior written permission. Permission can be requested from either ISO at the address below or ISO's member body in the country of the requester.

ISO copyright office
Case postale 56 • CH-1211 Geneva 20
Tel. + 41 22 749 01 11
Fax + 41 22 749 09 47
E-mail copyright@iso.org
Web www.iso.org

Published in Switzerland

Contents

	Page
Foreword	iv
Introduction	v
1 Scope	1
2 Normative references	1
3 Terms and definitions	1
4 Principle	2
5 Test apparatus	2
5.1 Perspiration rigid cushion loading indenter (PRCLI).....	2
5.2 Electrical impedance measurement system.....	3
5.3 Test environment.....	3
6 Preparation for testing	3
7 Test method	3
8 Test report	4

Foreword

ISO (the International Organization for Standardization) is a worldwide federation of national standards bodies (ISO member bodies). The work of preparing International Standards is normally carried out through ISO technical committees. Each member body interested in a subject for which a technical committee has been established has the right to be represented on that committee. International organizations, governmental and non-governmental, in liaison with ISO, also take part in the work. ISO collaborates closely with the International Electrotechnical Commission (IEC) on all matters of electrotechnical standardization.

The procedures used to develop this document and those intended for its further maintenance are described in the ISO/IEC Directives, Part 1. In particular the different approval criteria needed for the different types of ISO documents should be noted. This document was drafted in accordance with the editorial rules of the ISO/IEC Directives, Part 2 (see www.iso.org/directives).

Attention is drawn to the possibility that some of the elements of this document may be the subject of patent rights. ISO shall not be held responsible for identifying any or all such patent rights. Details of any patent rights identified during the development of the document will be in the Introduction and/or on the ISO list of patent declarations received (see www.iso.org/patents).

Any trade name used in this document is information given for the convenience of users and does not constitute an endorsement.

For an explanation on the meaning of ISO specific terms and expressions related to conformity assessment, as well as information about ISO's adherence to the WTO principles in the Technical Barriers to Trade (TBT) see the following URL: Foreword - Supplementary information

The committee responsible for this document is ISO/TC 173, *Assistive products for persons with disability*, Subcommittee SC 1, *Wheelchairs*.

ISO 16840 consists of the following parts, under the general title *Wheelchair seating*:

- *Part 1: Vocabulary, reference axis convention and measures for body segments, posture and postural support surfaces*
- *Part 2: Determination of physical and mechanical characteristics of devices intended to manage tissue integrity — Seat cushions*
- *Part 3: Determination of static, impact and repetitive load strengths for postural support devices*
- *Part 4: Seating systems for use in motor vehicles*
- *Part 6: Simulated use and determination of the changes in properties — Seat cushions*
- *Part 10: Resistance to ignition of non-integrated seat and back support cushions — Requirements and test methods*
- *Part 11: Determination of perspiration dissipation characteristics of seat cushions intended to manage tissue integrity [Technical Specification]*

Introduction

Dissipating perspiration and moisture on seat cushions is important to prevent pressure ulcers, tissue maceration and for comfortable sitting. This part of ISO 16840 specifies a test method for the measurement of the perspiration dissipating characteristics of wheelchair cushions under test conditions that simulate body loading on support surfaces with flat and contoured profiles. The test method is intended to be applicable to a wide variety of seat cushions that are used across the world.

This part of ISO 16840 specifies apparatus to measure dissipation characteristics (of perspiration) of seat cushions and the approach to be employed in measuring these characteristics. It is the intention of ISO/TC 173/SC 1 to further evaluate the outcomes of this test method and their clinical implications with the aim of developing an International Standard on this topic.

Wheelchair seating —

Part 11:

Determination of perspiration dissipation characteristics of seat cushions intended to manage tissue integrity

1 Scope

This part of ISO 16840 specifies a method for determining the dissipation characteristics of simulated perspiration exposure on wheelchair seat cushions.

This part of ISO 16840 is applicable to wheelchair seat cushions that include a cushion cover.

2 Normative references

The following documents, in whole or in part, are normatively referenced in this document and are indispensable for its application. For dated references, only the edition cited applies. For undated references, the latest edition of the referenced document (including any amendments) applies.

ISO 16840-2:2007, *Wheelchair seating — Part 2: Determination of physical and mechanical characteristics of devices intended to manage tissue integrity — Seat cushions*

ISO 554, *Standard atmospheres for conditioning and/or testing — Specifications*

3 Terms and definitions

For the purposes of this document, the following terms and definitions apply.

3.1

ischial tuberosity

IT

one of two locations on the inferior surface of the RCLI or PRCLI that corresponds in position to the location of a human ischial tuberosity

3.2

rigid cushion loading indenter

RCLI

cushion loading indenter with a rigid exterior surface contour

Note 1 to entry: Example details of the RCLI are provided in Annex A of ISO 16840-2:2007.

3.3

electrical impedance

complex number ratio of the voltage to the current in an alternating current circuit.

Note 1 to entry: Impedance extends the concept of electrical resistance to the alternating current circuit.

3.4

perspiration rigid cushion loading indenter

PRCLI

rigid cushion loading indenter modified to the specifications of [5.1](#)

4 Principle

Human sensible perspiration in the area between the cushion and buttocks have four possible states: a) existing between a cushion and the buttock (such as with a sealed vinyl cover); b) dissipated into the cushion cover but not into the cushion; c) dissipated more generally into both the cover and cushion; d) drawn away from the cover (which becomes dry) and into the cushion. We can evaluate the dissipation behaviour of the cover/cushion system by measuring the changing impedance at a location of interest over time following a discharge of simulated perspiration into the area between the rigid cushion loading indenter and the cushion.

The testing system has four elements: a) an RCLI simulating temperature, weight, and shape of a loading buttock; b) a discharge system that releases a discrete amount of solution that simulates perspiration; c) a measurement system of the changing impedance associated with changing solution concentration near the electrodes (indirectly indicating the absorption of the cover/cushion); d) a test environment of temperature and humidity.

5 Test apparatus

The following test apparatus is necessary to complete the test method of this part of ISO 16840.

5.1 Perspiration rigid cushion loading indenter (PRCLI)

5.1.1 Shape of PRCLI

The PRCLI is formed from 4 mm ± 1 mm polycarbonate sheet formed according to the specifications for a rigid cushion loading indenter (RCLI) with the inner surface of the shell formed to match the contour specified in ISO 16840-2:2007 Annex A (Figure A.1).

5.1.2 Temperature control on the PRCLI

The PRCLI shall include a means of maintaining the temperature at 27 °C ± 2 °C at the inferior surface of PRCLI.

5.1.3 Loading mechanism

A means to load the cushion through the PRCLI with a vertical force of 500 N ± 10 N as in ISO 16840-2.

5.1.4 Discharge mechanism

A system to discharge 10 ml ± 1 ml of 0,01 % sodium chloride (NaCl) solution within 1 s from a hole 0,2 mm in diameter (see [Figure 2](#)) located at the ischial tuberosity of the PRCLI (see [Figure 1](#)).

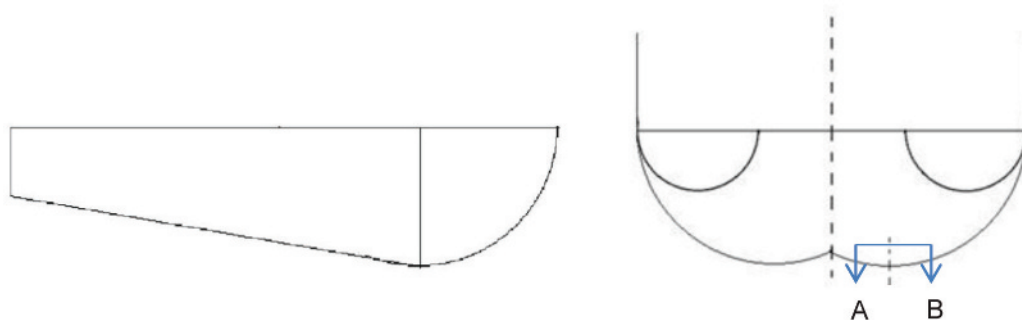
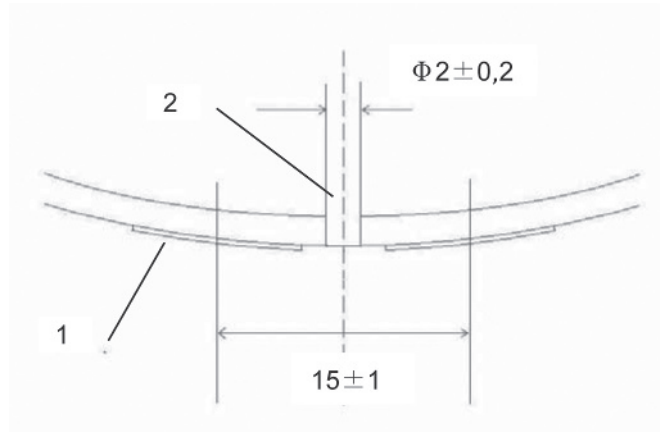


Figure 1 — Drawing of the PRCLI

Dimensions in millimetres



Key

- 1 round electrode (see 5.1.5)
- 2 hole for the discharge

Figure 2 — A-B Cross section

5.1.5 Sensing system (see Figure 2)

The sensing system shall have a pair of equally sized round stainless steel electrodes. The electrode shall be a thin plate with diameter of $10 \text{ mm} \pm 1 \text{ mm}$ and thickness of $0,1 \text{ mm}$, preserving smoothness of the buttock surface. The centre of each electrode shall be $15 \text{ mm} \pm 1 \text{ mm}$ from the centre of the hole as shown in the cross sectional diagram of the PRCLI.

5.2 Electrical impedance measurement system

An electrical impedance measurement system able to measure electrical impedance between the two electrodes, ranging from $0,001 \text{ M}\Omega$ to $1,0 \text{ M}\Omega$, at a sampling rate of 1 Hz .

The electrodes shall be connected to the impedance measurement box external to the PRCLI by appropriately shielded electrical wires to minimize electrical noise from the test environment.

NOTE Alternating current should be selected as the applying current for measurement to prevent electrolysis of the electrodes when in contact with the solution.

5.3 Test environment

A test environment maintained at $23 \text{ }^\circ\text{C} \pm 2 \text{ }^\circ\text{C}$ and $50 \% \pm 5 \%$ relative humidity as specified in ISO 554 and which includes the means to measure and record its temperature and humidity during the test period.

6 Preparation for testing

Precondition the cushion to be tested by holding it in the test environment of $23 \text{ }^\circ\text{C} \pm 2 \text{ }^\circ\text{C}$, and $50 \% \pm 5 \%$ relative humidity for 24 h prior to initiating the test.

7 Test method

7.1 Commence measurement of the impedance with a sampling rate of 1 Hz , with the PRCLI not in contact with the cushion/cover surface.

7.2 After $1 \text{ min} \pm 5 \text{ s}$, apply the PRCLI with 500 N load to the cushion and allow $1 \text{ min} \pm 5 \text{ s}$ for settling.

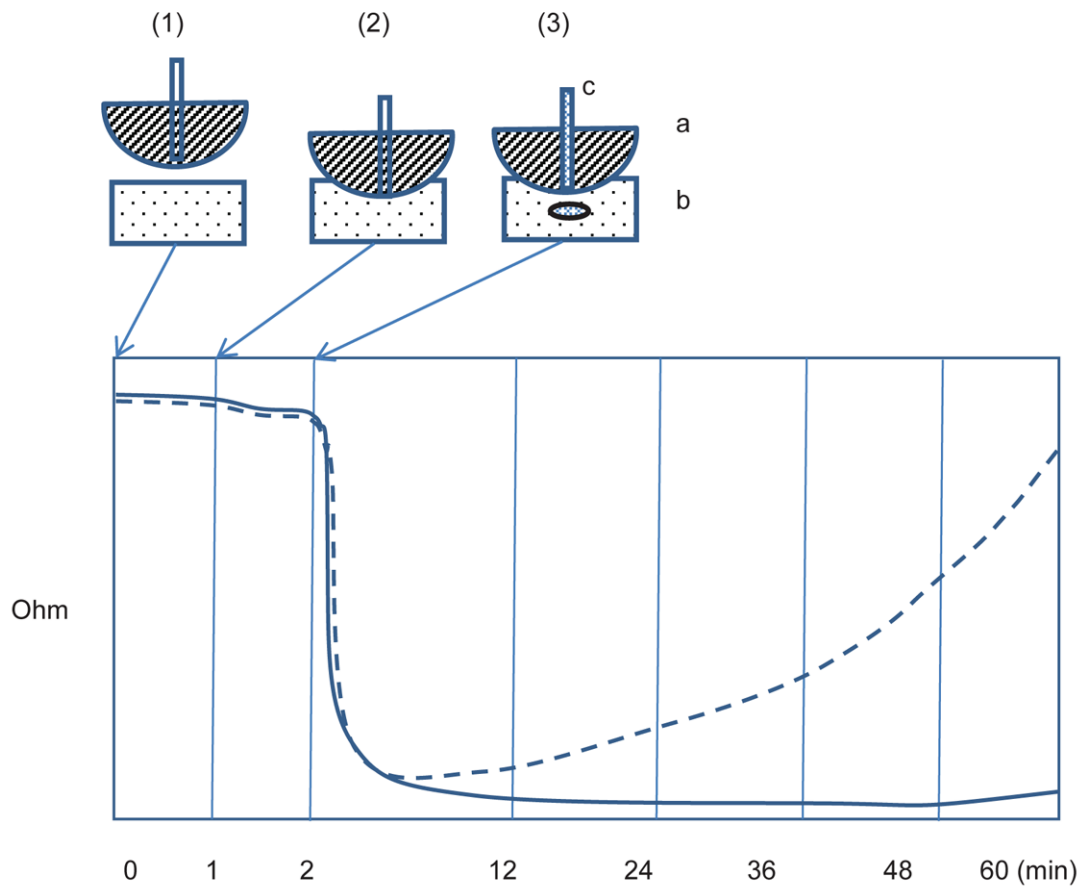
7.3 Between the PRCLI and the cushion discharge $10 \text{ ml} \pm 1 \text{ ml}$ of the NaCl solution from the tube within 1 s.

7.4 Continue to record the impedance until at least $1 \text{ h} \pm 1 \text{ min}$ has elapsed from the commencement of the test. In some cases, change can be very slow and extended testing will be required.

8 Test report

The test report shall contain the following:

- a) a reference to this part of ISO 16840 (i.e. ISO/TS 16840-11);
- b) the name, address, and accreditation status of the testing institution;
- c) the name and address of the manufacturer of the cushion;
- d) the date of issue of the test report;
- e) the test environmental conditions as specified;
- f) the model type and nominal size that uniquely describes the test cushion and any cover that is used;
- g) a photograph of the test cushion with the cover prior to and following the test;
- h) the preparation of the test cushion;
- i) a graph of impedance values *versus* time for the period of the whole test as per [7.4](#);
EXAMPLE See [Figure 3](#) for an example of the type of graph that can result.
- j) a table of the values of impedance at
 - 1) the commencement of the test,
 - 2) immediately prior to the injection of the NaCl solution, and
 - 3) $12 \text{ min} \pm 20 \text{ s}$ intervals (from commencement of test) until the conclusion of the test.



Key

- (1) start to measure impedance
- (2) start to load 500N
- (3) start to pour the liquid
- a perspiration rigid cushion loading indenter
- b cushion
- c discharge mechanism

NOTE The dotted graph represents outstanding moisture dissipation, and the solid line, a cover that does not dissipate the moisture.

Figure 3 — An example of two possible graphs of the impedance against time when testing according to [Clause 7](#)

British Standards Institution (BSI)

BSI is the national body responsible for preparing British Standards and other standards-related publications, information and services.

BSI is incorporated by Royal Charter. British Standards and other standardization products are published by BSI Standards Limited.

About us

We bring together business, industry, government, consumers, innovators and others to shape their combined experience and expertise into standards-based solutions.

The knowledge embodied in our standards has been carefully assembled in a dependable format and refined through our open consultation process. Organizations of all sizes and across all sectors choose standards to help them achieve their goals.

Information on standards

We can provide you with the knowledge that your organization needs to succeed. Find out more about British Standards by visiting our website at bsigroup.com/standards or contacting our Customer Services team or Knowledge Centre.

Buying standards

You can buy and download PDF versions of BSI publications, including British and adopted European and international standards, through our website at bsigroup.com/shop, where hard copies can also be purchased.

If you need international and foreign standards from other Standards Development Organizations, hard copies can be ordered from our Customer Services team.

Subscriptions

Our range of subscription services are designed to make using standards easier for you. For further information on our subscription products go to bsigroup.com/subscriptions.

With **British Standards Online (BSOL)** you'll have instant access to over 55,000 British and adopted European and international standards from your desktop. It's available 24/7 and is refreshed daily so you'll always be up to date.

You can keep in touch with standards developments and receive substantial discounts on the purchase price of standards, both in single copy and subscription format, by becoming a **BSI Subscribing Member**.

PLUS is an updating service exclusive to BSI Subscribing Members. You will automatically receive the latest hard copy of your standards when they're revised or replaced.

To find out more about becoming a BSI Subscribing Member and the benefits of membership, please visit bsigroup.com/shop.

With a **Multi-User Network Licence (MUNL)** you are able to host standards publications on your intranet. Licences can cover as few or as many users as you wish. With updates supplied as soon as they're available, you can be sure your documentation is current. For further information, email bsmusales@bsigroup.com.

BSI Group Headquarters

389 Chiswick High Road London W4 4AL UK

Revisions

Our British Standards and other publications are updated by amendment or revision.

We continually improve the quality of our products and services to benefit your business. If you find an inaccuracy or ambiguity within a British Standard or other BSI publication please inform the Knowledge Centre.

Copyright

All the data, software and documentation set out in all British Standards and other BSI publications are the property of and copyrighted by BSI, or some person or entity that owns copyright in the information used (such as the international standardization bodies) and has formally licensed such information to BSI for commercial publication and use. Except as permitted under the Copyright, Designs and Patents Act 1988 no extract may be reproduced, stored in a retrieval system or transmitted in any form or by any means – electronic, photocopying, recording or otherwise – without prior written permission from BSI. Details and advice can be obtained from the Copyright & Licensing Department.

Useful Contacts:

Customer Services

Tel: +44 845 086 9001

Email (orders): orders@bsigroup.com

Email (enquiries): cservices@bsigroup.com

Subscriptions

Tel: +44 845 086 9001

Email: subscriptions@bsigroup.com

Knowledge Centre

Tel: +44 20 8996 7004

Email: knowledgecentre@bsigroup.com

Copyright & Licensing

Tel: +44 20 8996 7070

Email: copyright@bsigroup.com



...making excellence a habit.™