



BSI Standards Publication

Test method on electromagnetic emissions

Part 1: Electronic control gear
for single- and double-capped
fluorescent lamps

National foreword

This Published Document is the UK implementation of CISPR/TR 30-1:2012.

The UK participation in its preparation was entrusted by Technical Committee GEL/210, EMC - Policy committee, to Subcommittee GEL/210/11, EMC product standards.

A list of organizations represented on this committee can be obtained on request to its secretary.

This publication does not purport to include all the necessary provisions of a contract. Users are responsible for its correct application.

© The British Standards Institution 2012

Published by BSI Standards Limited 2012

ISBN 978 0 580 75425 8

ICS 33.100.10

Compliance with a British Standard cannot confer immunity from legal obligations.

This Published Document was published under the authority of the Standards Policy and Strategy Committee on 31 October 2012.

Amendments issued since publication

Amd. No.	Date	Text affected
-----------------	-------------	----------------------



INTERNATIONAL STANDARD

INTERNATIONAL SPECIAL COMMITTEE ON RADIO INTERFERENCE

**Test method on electromagnetic emissions –
Part 1: Electronic control gear for single- and double-capped fluorescent lamps**

INTERNATIONAL
ELECTROTECHNICAL
COMMISSION

PRICE CODE

R

ICS 33.100.10

ISBN 978-2-83220-312-5

Warning! Make sure that you obtained this publication from an authorized distributor.

CONTENTS

FOREWORD.....	3
INTRODUCTION.....	5
1 Scope.....	6
2 Normative references	6
3 Presumption of compliance.....	6
4 Test method	7
5 Reference luminaire	7
5.1 Construction	7
5.2 Mounting and wiring schemes.....	7
5.3 Grounding	8
5.4 Wiring.....	8
6 Marking	9
7 Guidance for luminaire design	9
Annex A (informative) Mounting and wiring schemes	10
Figure A.1 – Mounting and wiring scheme of a reference luminaire for two double-capped fluorescent lamps	10
Figure A.2 – Mounting and wiring scheme of a reference luminaire for two single-capped fluorescent lamps, two-sided electronic control gear terminals.....	11
Figure A.3 – Mounting and wiring scheme of a reference luminaire for two single-capped fluorescent lamps, single-sided electronic control gear terminals.....	12
Figure A.4 – Mounting scheme of a reference luminaire for one, two, three or four double-capped fluorescent lamps.....	13
Figure A.5 – Mounting scheme of a reference luminaire for one, two, three or four single-capped fluorescent lamps, two-sided electronic control gear terminals	14
Figure A.6 – Mounting scheme of a reference luminaire for one, two, three or four single-capped fluorescent lamps, single-sided electronic control gear terminals.....	15
Figure A.7 – Mounting and wiring schema of a reference luminaire for four double-capped fluorescent lamps where the output terminals of the electronic control gear are positioned on both ends.....	16
Figure A.8 – Mounting and wiring schema of reference luminaires for one, two, three or four double-capped fluorescent lamps where the output terminals of the electronic control gear are positioned on both ends	17
Figure A.9 – Mounting and wiring schema of a reference luminaire for one circular-shaped fluorescent lamp, single-sided electronic control gear terminals.....	18
Figure A.10 – Mounting and wiring schema of a reference luminaire for two circular-shaped fluorescent lamps, single-sided electronic control gear terminals.....	19
Table 1 – Grounding connection overview for protection class I and class II applications	9

INTERNATIONAL ELECTROTECHNICAL COMMISSION

TEST METHOD ON ELECTROMAGNETIC EMISSIONS –

Part 1: Electronic control gear for single- and double-capped fluorescent lamps

FOREWORD

- 1) The International Electrotechnical Commission (IEC) is a worldwide organization for standardization comprising all national electrotechnical committees (IEC National Committees). The object of IEC is to promote international co-operation on all questions concerning standardization in the electrical and electronic fields. To this end and in addition to other activities, IEC publishes International Standards, Technical Specifications, Technical Reports, Publicly Available Specifications (PAS) and Guides (hereafter referred to as "IEC Publication(s)"). Their preparation is entrusted to technical committees; any IEC National Committee interested in the subject dealt with may participate in this preparatory work. International, governmental and non-governmental organizations liaising with the IEC also participate in this preparation. IEC collaborates closely with the International Organization for Standardization (ISO) in accordance with conditions determined by agreement between the two organizations.
- 2) The formal decisions or agreements of IEC on technical matters express, as nearly as possible, an international consensus of opinion on the relevant subjects since each technical committee has representation from all interested IEC National Committees.
- 3) IEC Publications have the form of recommendations for international use and are accepted by IEC National Committees in that sense. While all reasonable efforts are made to ensure that the technical content of IEC Publications is accurate, IEC cannot be held responsible for the way in which they are used or for any misinterpretation by any end user.
- 4) In order to promote international uniformity, IEC National Committees undertake to apply IEC Publications transparently to the maximum extent possible in their national and regional publications. Any divergence between any IEC Publication and the corresponding national or regional publication shall be clearly indicated in the latter.
- 5) IEC itself does not provide any attestation of conformity. Independent certification bodies provide conformity assessment services and, in some areas, access to IEC marks of conformity. IEC is not responsible for any services carried out by independent certification bodies.
- 6) All users should ensure that they have the latest edition of this publication.
- 7) No liability shall attach to IEC or its directors, employees, servants or agents including individual experts and members of its technical committees and IEC National Committees for any personal injury, property damage or other damage of any nature whatsoever, whether direct or indirect, or for costs (including legal fees) and expenses arising out of the publication, use of, or reliance upon, this IEC Publication or any other IEC Publications.
- 8) Attention is drawn to the Normative references cited in this publication. Use of the referenced publications is indispensable for the correct application of this publication.
- 9) Attention is drawn to the possibility that some of the elements of this IEC Publication may be the subject of patent rights. IEC shall not be held responsible for identifying any or all such patent rights.

The main task of IEC technical committees is to prepare International Standards. However, a technical committee may propose the publication of a technical report when it has collected data of a different kind from that which is normally published as an International Standard, for example "state of the art".

CISPR 30-1, which is a technical report, has been prepared by CISPR subcommittee F: Interference relating to household appliances tools, lighting equipment and similar apparatus.

This first edition of CISPR/TR 30-1 cancels and replaces the first edition of CISPR/TR 30 published in 2001. It is a technical revision.

This edition includes the following significant technical changes with respect to the previous edition:

- minor correction of wiring distances of reference luminaire in Figure A.1;

- addition of reference luminaires for electronic control gear with output terminals on both ends;
- addition of reference luminaires for electronic control gear for circular-shaped fluorescent lamps;
- introduction of control gear marking indicating suitability for application in protection class I and/or class II luminaires.

The text of this technical report is based on the following documents:

Enquiry draft	Report on voting
CISPR/F/538/DTR	CISPR/F/577/RVC

Full information on the voting for the approval of this technical report can be found in the report on voting indicated in the above table.

This publication has been drafted in accordance with the ISO/IEC Directives, Part 2.

A list of all parts of the CISPR 30 series can be found, under the general title *Test method on electromagnetic emissions*, on the IEC website.

The committee has decided that the contents of this publication will remain unchanged until the stability date indicated on the IEC web site under "<http://webstore.iec.ch>" in the data related to the specific publication. At this date, the publication will be

- reconfirmed,
- withdrawn,
- replaced by a revised edition, or
- amended.

A bilingual version of this publication may be issued at a later date.

INTRODUCTION

Requirements to limit radio-frequency disturbances from lighting equipment are standardized in CISPR 15. They are restricted to those kinds of lighting equipment which are considered as finished products and intended to be placed on the market for the end user, viz. luminaires, self-ballasted lamps and independent lamp control gear. No emission requirements apply to components intended to be built into luminaires.

Most electronic control gear for lamps (tubular fluorescent, low voltages halogen incandescent lamps or HID-lamps) are built into a number of different types of luminaires: not only in luminaires of different manufacturers but also in different types of luminaires of one manufacturer.

All those luminaires are tested, although disturbance data of a certain luminaire can be predicted from other luminaire measurements equipped with the same electronic control gear and lamps.

This has led to the question whether a worst-case test luminaire could be designed in which the electronic control gear could be tested. In the event that this test luminaire complies with the relevant requirements, all luminaires where that particular electronic control gear is built in comply, and a great deal of superfluous testing can be avoided. This idea looks correct, simple and interesting, but leads to two comments:

- a worst-case luminaire is too strict. From pre-measurements it appeared that commercial electronic control gear did not pass some tests in a worst-case dummy luminaire, whereas they do in real luminaires;
- even if the electronic control gear passes the tests in a worst-case luminaire, the question remains who is responsible in case the real luminaire, where it is built in, does not comply.

The conclusion is that it is not advisable to change the basic principle of CISPR 15 that no emission requirements apply to components built into a luminaire.

There is, however, a need for an independent test method to check the behaviour of an electronic control gear in the radiofrequency spectrum.

This edition of CISPR/TR 30-1, which replaces CISPR/TR 30, is published in conjunction with CISPR/TR 30-2. Each part of CISPR 30 series is independent and describes the test set-up for electronic control gear use together with a special lamp family. The formatting into separately published parts provides for ease of future amendments and revisions. Additional requirements will be added as and when a need for them is recognised.

CISPR 30-1 is a technical report for such a method, and it concerns electronic control gear for single- and double-capped fluorescent lamps.

CISPR 30-2 describes reference luminaires for EMC testing of electronic control gear for discharge lamps other than fluorescent lamps.

TEST METHOD ON ELECTROMAGNETIC EMISSIONS –

Part 1: Electronic control gear for single- and double-capped fluorescent lamps

1 Scope

This part of CISPR 30, which is a technical report, details, with the aid of reference luminaires, an independent method by which the radio disturbance characteristics of electronic control gear for fluorescent lamp luminaires with protection classes I and/or II may be compared against the requirements of CISPR 15.

This technical report covers electronic control gear for double-capped fluorescent lamps fitted with G5 or G13 lamp caps and to single-capped fluorescent lamps fitted with lamp caps: 2GX7, 2G8, 2G10, 2G11, 2GX13, G23, GX23, G24q, GX24q, GR8, and GR10q.

NOTE The above listing shows a typical selection of caps which are commonly used and does not lay claim to be exhaustive.

It is specifically applicable for equipment to be connected to 230 V – 50 Hz mains power networks. For other power systems, modifications may be necessary.

2 Normative references

The following documents, in whole or in part, are normatively referenced in this document and are indispensable for its application. For dated references, only the edition cited applies. For undated references, the latest edition of the referenced document (including any amendments) applies.

CISPR 15:2005, *Limits and methods of measurement of radio disturbance characteristics of electrical lighting and similar equipment*
Amendment 1 (2006)
Amendment 2 (2008)

3 Presumption of compliance

The electronic lamp control gear in conjunction with the appropriate reference luminaire is deemed to comply with the radiofrequency disturbance limits of CISPR 15 if it complies with the terminal voltage limits of Table 2a of CISPR 15:2005 and with the radiated disturbance limits of Table 3a and Table 3b or Table B.1 of CISPR 15:2005. Where the electronic lamp control gear is controlled by an external device the disturbance voltage at the control terminals shall comply with the limits of Table 2c of CISPR 15:2005. Limits of disturbance voltage at the load terminals do not apply.

It should, however, be noted that the reference luminaire is not a worst-case luminaire, and the use of a reference luminaire cannot accurately predict the performance of a real luminaire. A real luminaire where the tested electronic control gear is built in would not automatically comply with the requirements of CISPR 15.

For EMC compliance the luminaire manufacturer should consider Clauses 6 and 7 of this technical report and the mounting instruction of the lamp control gear manufacturer.

4 Test method

The electronic lamp control gear is mounted on a reference luminaire as specified in Clause 5.

When the electronic control gear is designed for operating more than one lamp, all lamps shall be operated simultaneously.

The reference luminaire is tested according to the methods of measurement as described in 8.1, 9.1 and 9.2 (or Annex B) of CISPR 15:2005.

Tests shall be carried out with lamps for which the electronic control gear is designed.

The operating conditions of Clause 6 of CISPR 15:2005 apply.

5 Reference luminaire

5.1 Construction

The reference luminaire is built up of a metal plate $1\text{ mm} \pm 0,5\text{ mm}$ thick having external dimensions as given in Figures A.1 to A.10. This metal plate is mounted on a piece of insulating material $20\text{ mm} \pm 2\text{ mm}$ thick having dimensions slightly larger than the metal plate. The electronic lamp control gear and lamp holders are mounted on this metal plate. The height of the lamp holders shall be such that the distance between the lamp and the metal plate is $9\text{ mm} \pm 1\text{ mm}$ for lamps having a nominal tube diameter lower or equal to 25 mm and $20\text{ mm} \pm 1\text{ mm}$ for lamps having a nominal tube diameter greater than 25 mm. Single-capped fluorescent lamps shall be mounted with the plane through the centre lines of both tubes parallel to the metal plate and supported at the end by a small piece of insulating material.

The length of the metal plate shall be as indicated on the drawing. For double-capped fluorescent lamps, it is recommended that a reference luminaire for each lamp length be designed. However, as some types of fluorescent lamps have only a small difference in length, a reference luminaire may be used for more than one lamp length.

5.2 Mounting and wiring schemes

Figures A.1 to A.10 describe the mounting and wiring schemes.

- Figure A.1 gives the mounting and wiring scheme of a reference luminaire for two double-capped fluorescent lamps.
- Figure A.2 gives the mounting and wiring scheme of a reference luminaire for two single-capped fluorescent lamps where the output terminals of the electronic control gear are at the opposite side to the input terminals.
- Figure A.3 gives the mounting and wiring scheme of a reference luminaire for two single-capped fluorescent lamps where the output terminals of the electronic control gear are at the same side as the input terminals.
- Figure A.4 gives the mounting scheme of reference luminaires for one, two, three or four double-capped fluorescent lamps.
- Figure A.5 gives the mounting scheme of a reference luminaire for one, two, three or four single-capped fluorescent lamps where the output terminals of the electronic control gear are at the opposite side to the input terminals.
- Figure A.6 gives the mounting scheme of a reference luminaire for one, two, three or four single-capped fluorescent lamps where the output terminals of the electronic control gear are at the same side as the input terminals.

- Figure A.7 gives the mounting schema of a reference luminaire for four double-capped fluorescent lamps where the output terminals of the electronic control gear are positioned on both ends of the electronic control gear.
- Figure A.8 gives the mounting schema of reference luminaires for one, two, three or four double-capped fluorescent lamps where the output terminals of the electronic control gear are positioned on both ends of the electronic control gear.
- Figure A.9 gives the mounting schema of a reference luminaire for one circular-shaped fluorescent lamp, single-sided electronic control gear terminals.
- Figure A.10 gives the mounting schema of a reference luminaire for two circular-shaped fluorescent lamps, single-sided electronic control gear terminals.

5.3 Grounding

Information of protective (PE) or functional (FE) earth connection of the metal plate (if existing) of the reference luminaires and the PE or FE connection of the electronic control gear is given in Table 1.

If a metal plate is used (application of electronic lamp control gear in luminaire with metal housing or in luminaires designed with parts of metal) then the metal plate shall be connected to the reference earth of the V-network.

If the electronic control gear has an earth terminal and the electronic control gear is designed for metal housing luminaire, this terminal shall be connected to the metal plate with the shortest possible wire. Electronic control gear having a metal housing shall be fixed to the metal plate to ensure proper galvanic contact.

For electronic control gear applications in luminaire with plastic housing the metal plate of the reference luminaires shall be removed.

5.4 Wiring

Not twisted and flat multi-wire cables are recommended for the cables used on the reference luminaire. Where on the figures the connecting cables are drawn close together, they shall be mounted as close as possible to each other and to the metal plate. Wiring dimension and insulation shall be adequate for the applied voltage and current. The wiring connecting the reference luminaire to the artificial mains network and the wiring to the CISPR measuring receiver shall be in conformity with CISPR 15:2005 (Figures 5 and 6).

Table 1 – Grounding connection overview for protection class I and class II applications

Control gear design (terminals)	Selected luminaire design	
	A) Protection Class – I	B) Protection Class – II
PE, L, N or FE, L, N	reference luminaire <u>with</u> metal plate: <ul style="list-style-type: none"> PE terminal of the reference luminaire is connected to the metal plate PE or FE terminal of the control gear is connected to the metal plate control gear housing is connected to the metal plate using the means for fixing the control gear 	reference luminaire <u>without</u> metal plate: <ul style="list-style-type: none"> FE terminal of the reference luminaire is connected to the FE terminal of the control gear, only if needed for fulfilling the EMC requirements. A PE terminal of the control gear may not be connected.
L, N	reference luminaire <u>with</u> metal plate: <ul style="list-style-type: none"> PE terminal of the reference luminaire is connected to the metal plate if applicable the control gear housing is connected to the metal plate by using the means for fixing the control gear 	reference luminaire <u>without</u> metal plate

6 Marking

The selected luminaire design for the measurement setup shall be specified in the technical documentation. As an option this information may be provided on the label of the control gear:

- “CIS 30-1: M” indicates the selected protection class I luminaire design;
- “CIS 30-1: P” indicates the selected protection class II luminaire design;
- “CIS 30-1: M + P” indicates the selected protection class I and class II luminaire design.

7 Guidance for luminaire design

When an electronic lamp control gear is incorporated in a luminaire, the method of installation of the electronic lamp control gear and the design of the luminaire itself can influence the overall radio disturbance characteristics of the luminaire.

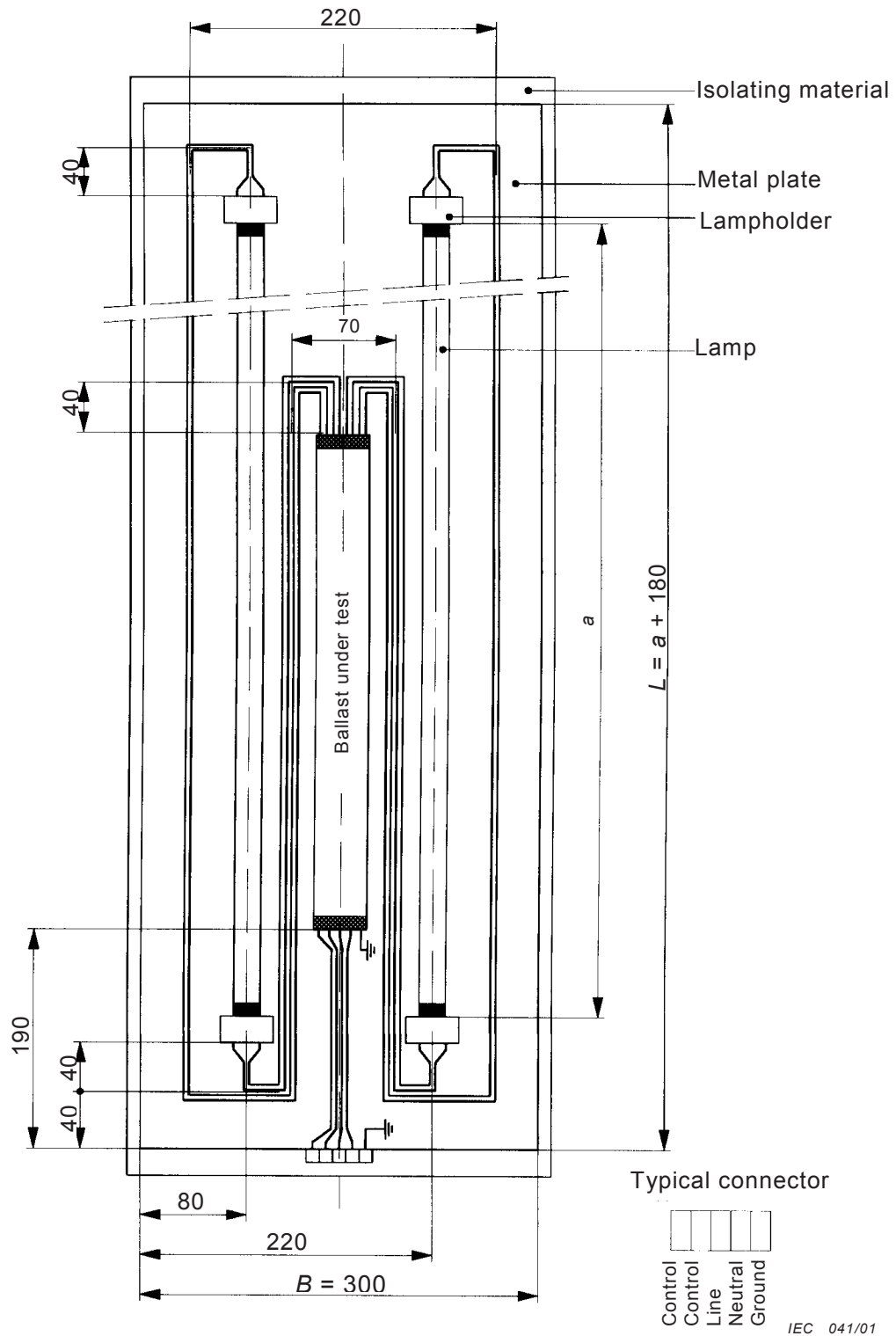
It is recommended that the electronic lamp control gear manufacturer give guidance to the luminaire designers on those aspects of the luminaire which affect its radio disturbance performance.

In this respect basic design rules are as follows:

- minimize wiring within the luminaire;
- separate mains wiring and control wiring from lamp wiring and lamp;
- if separation is not possible, screen the mains wiring and control wiring by a jacket;
- ensure a firm electrical contact and/or connection between all metal parts in the luminaire and the electronic control gear housing;
- ensure good connection to functional earth if metal shielding is used around the lamp(s).

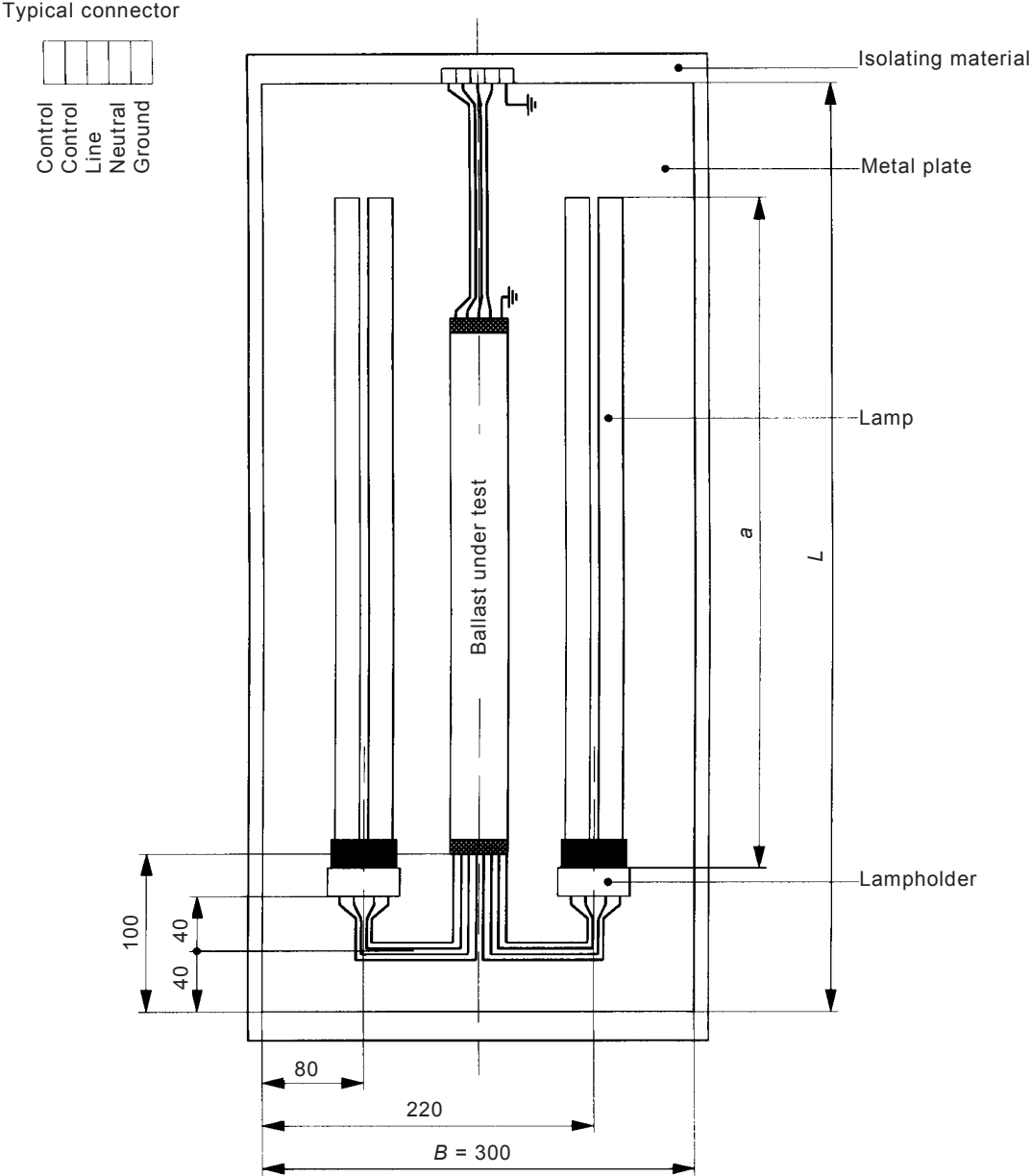
Annex A
(informative)

Mounting and wiring schemes



Dimensions in millimetres

Figure A.1 – Mounting and wiring scheme of a reference luminaire for two double-capped fluorescent lamps



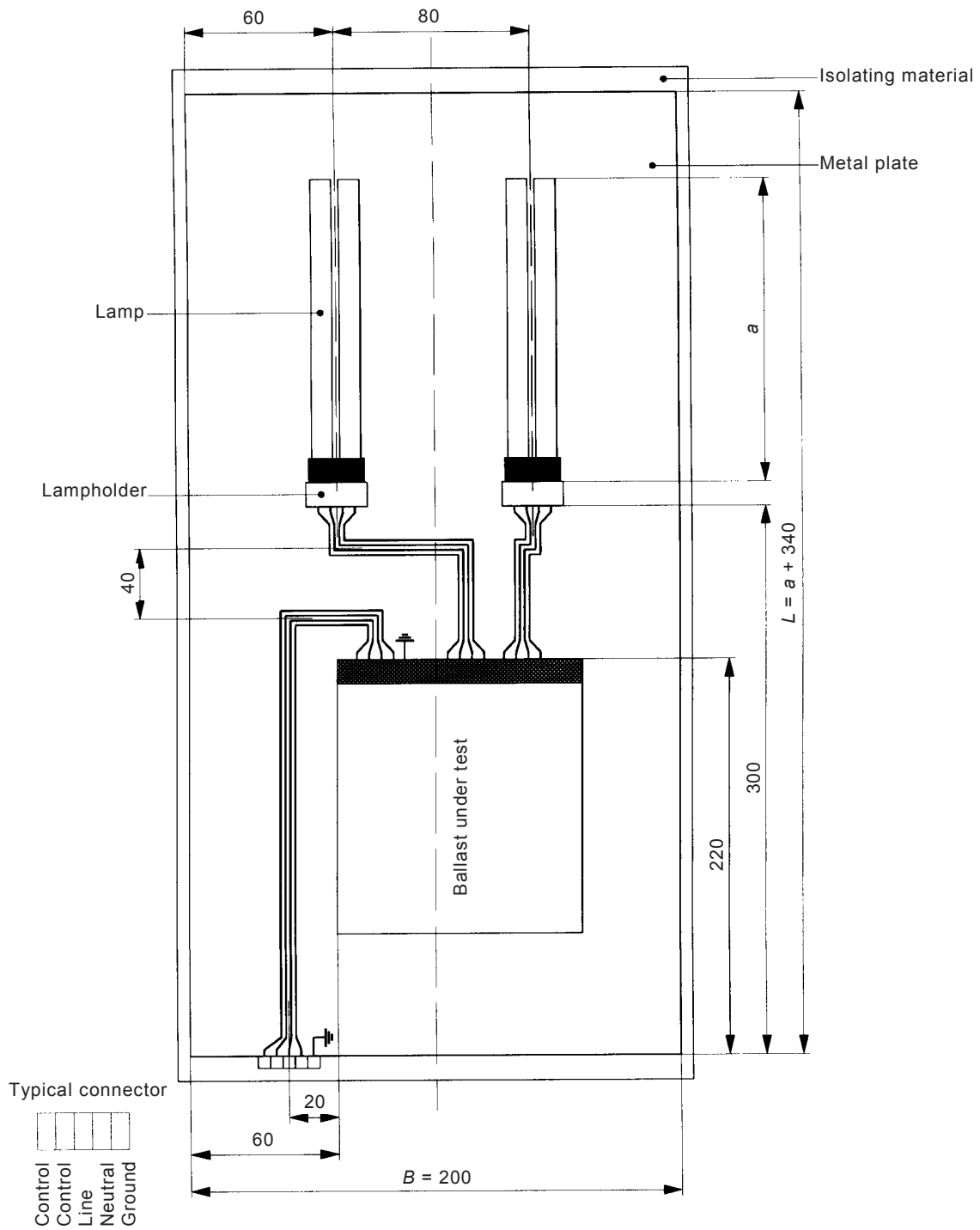
IEC 042/01

Dimensions in millimetres

$L = 700$ for lamps with $a > 250$

$L = 400$ for lamps with $a \leq 250$

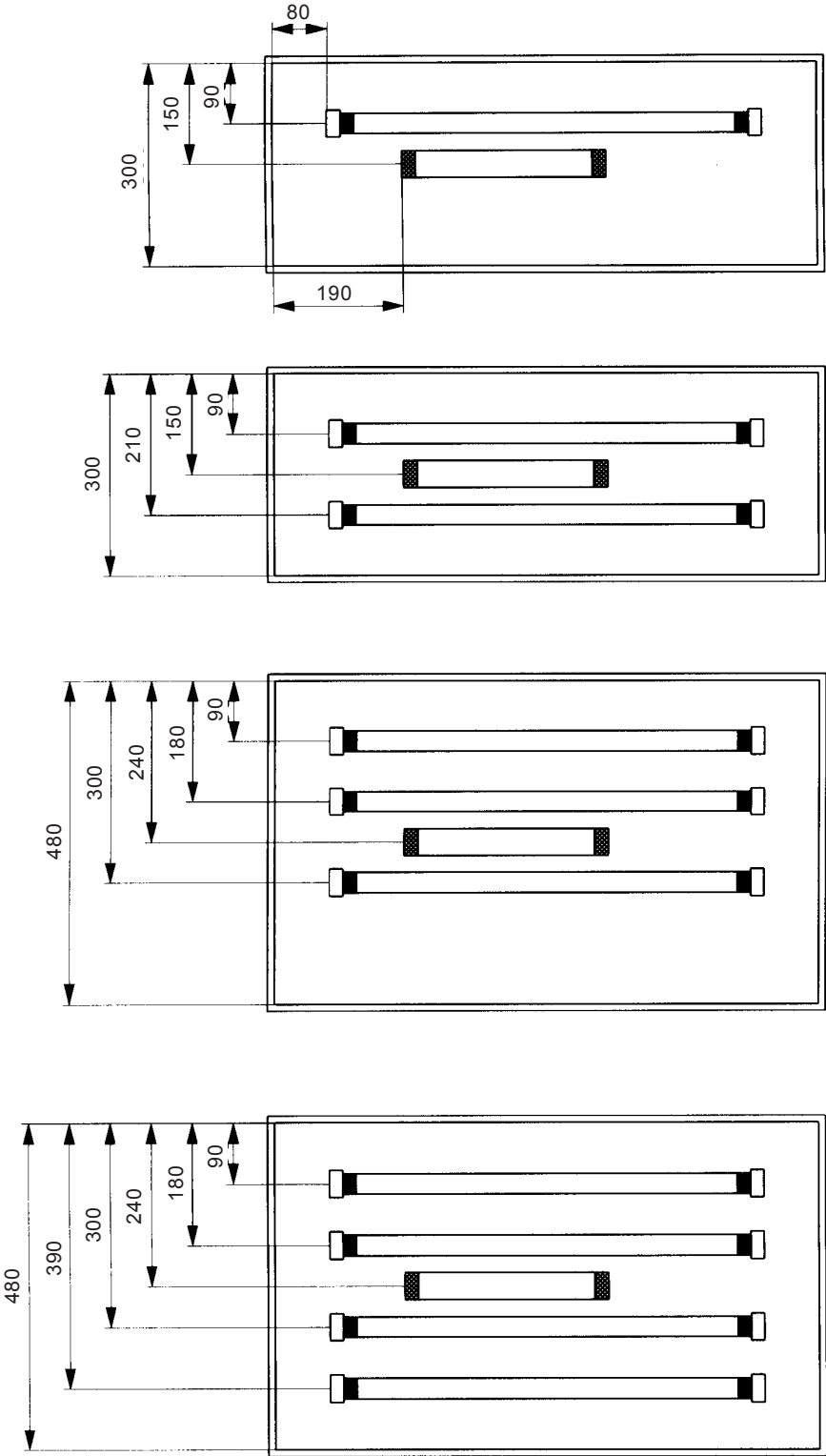
Figure A.2 – Mounting and wiring scheme of a reference luminaire for two single-capped fluorescent lamps, two-sided electronic control gear terminals



IEC 043/01

Dimensions in millimetres

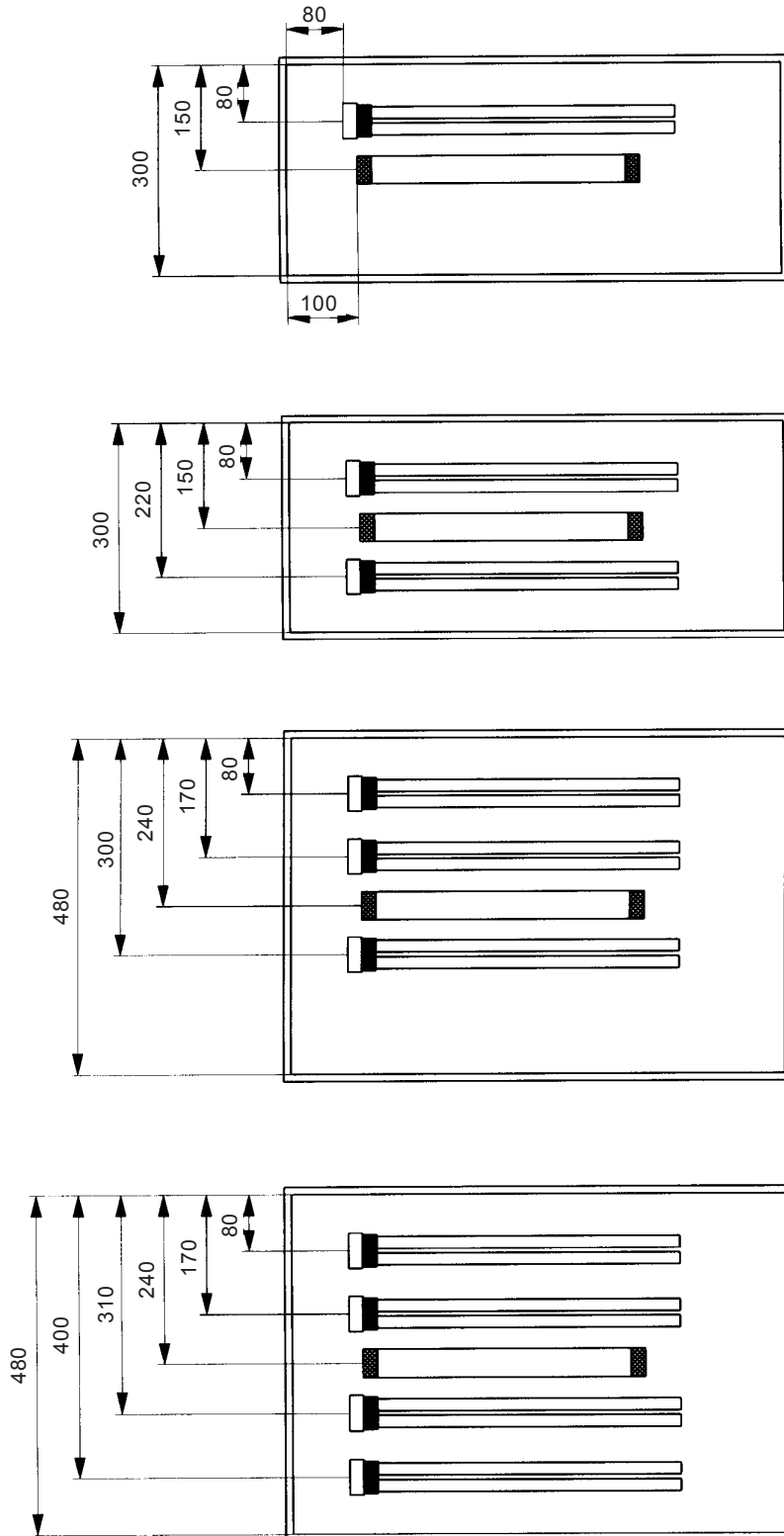
Figure A.3 – Mounting and wiring scheme of a reference luminaire for two single-capped fluorescent lamps, single-sided electronic control gear terminals



IEC 044/01

Dimensions in millimetres

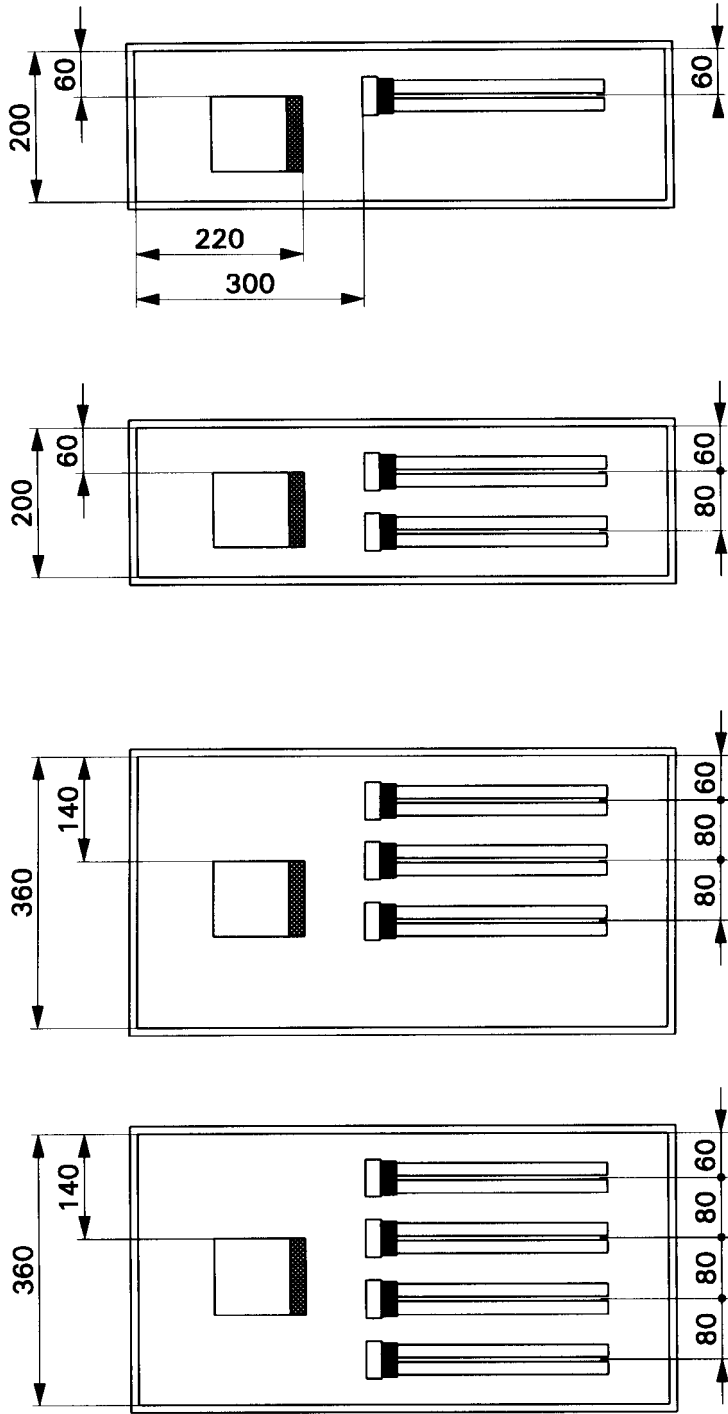
Figure A.4 – Mounting scheme of a reference luminaire for one, two, three or four double-capped fluorescent lamps



IEC 045/01

Dimensions in millimetres

Figure A.5 – Mounting scheme of a reference luminaire for one, two, three or four single-capped fluorescent lamps, two-sided electronic control gear terminals



IEC 046/01

Dimensions in millimetres

Figure A.6 – Mounting scheme of a reference luminaire for one, two, three or four single-capped fluorescent lamps, single-sided electronic control gear terminals

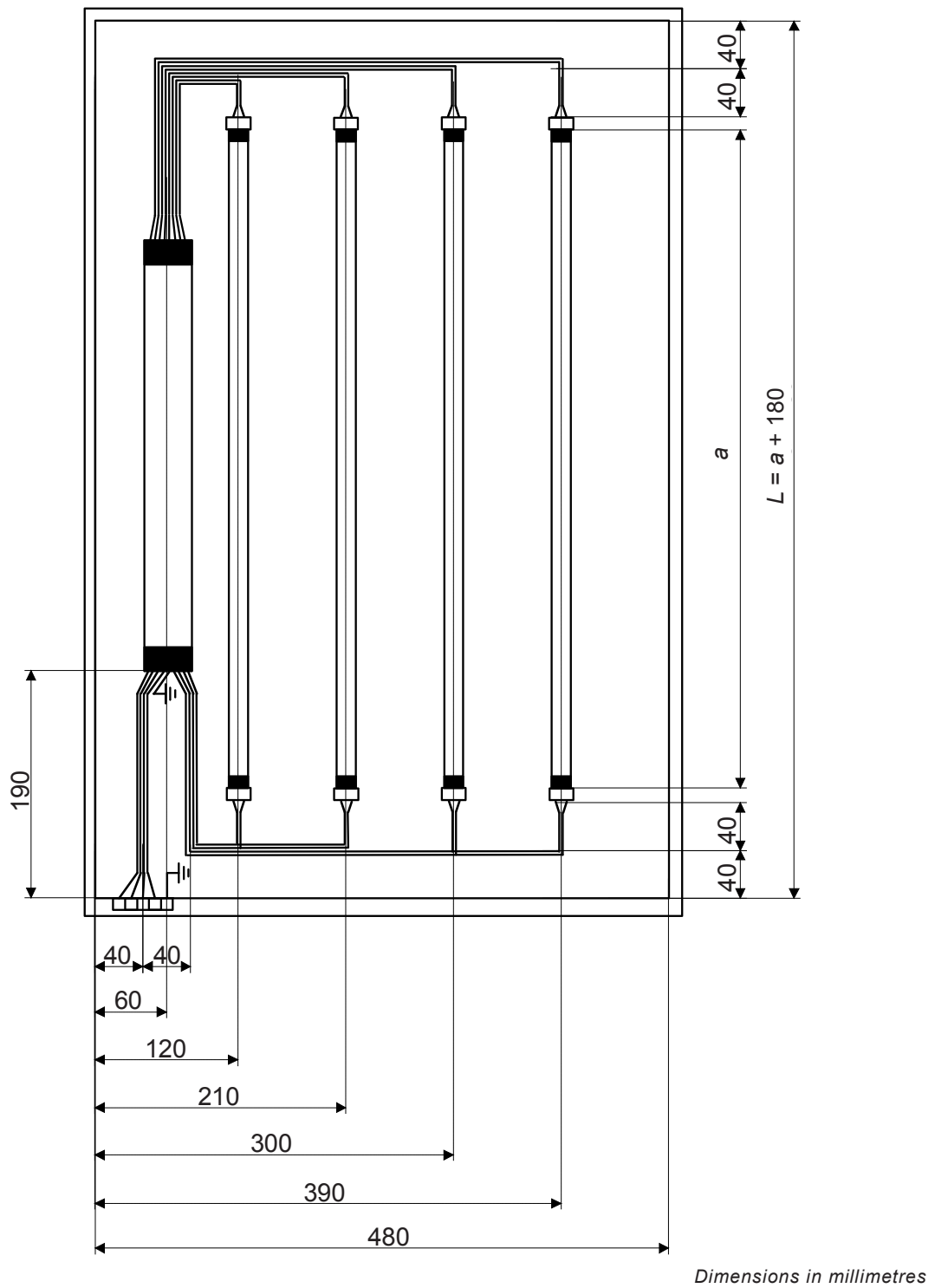
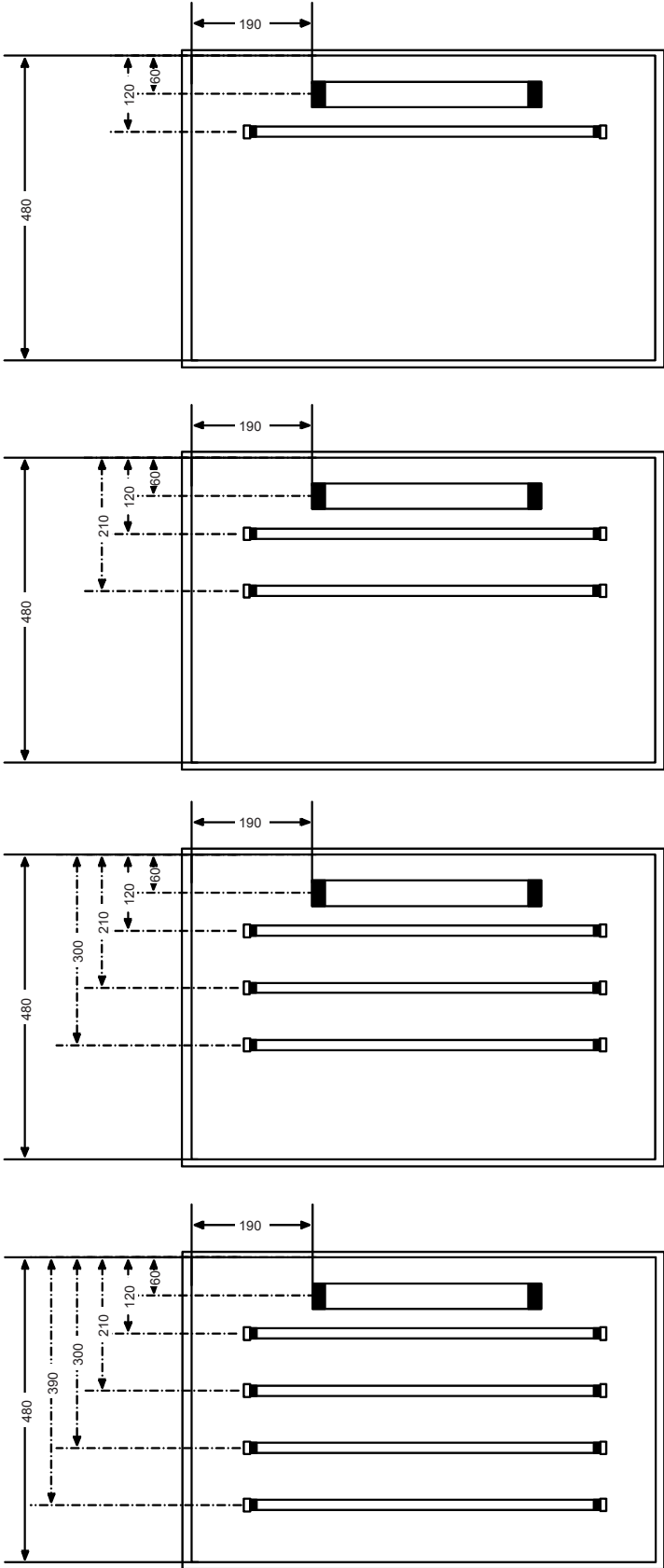
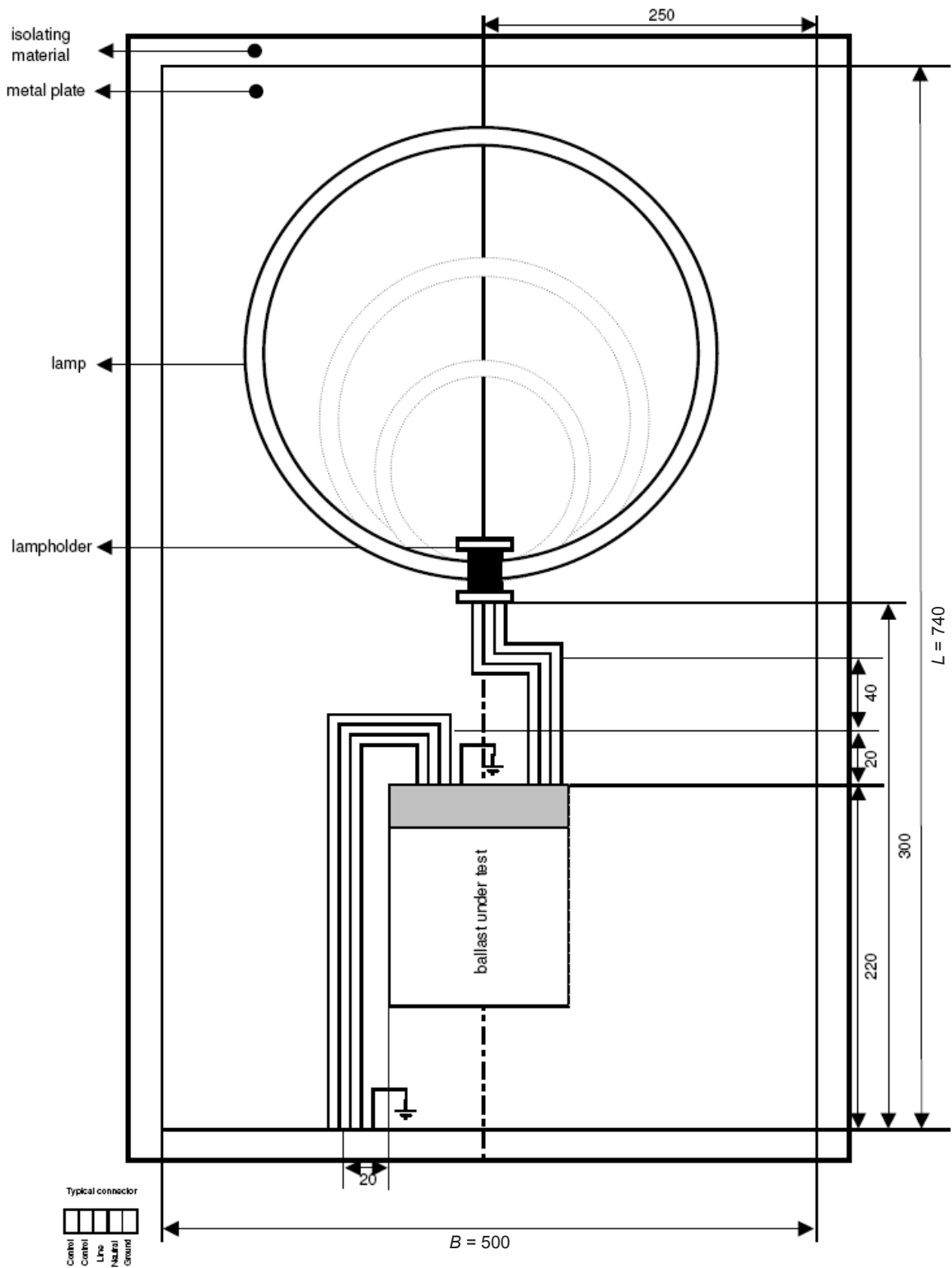


Figure A.7 – Mounting and wiring schema of a reference luminaire for four double-capped fluorescent lamps where the output terminals of the electronic control gear are positioned on both ends



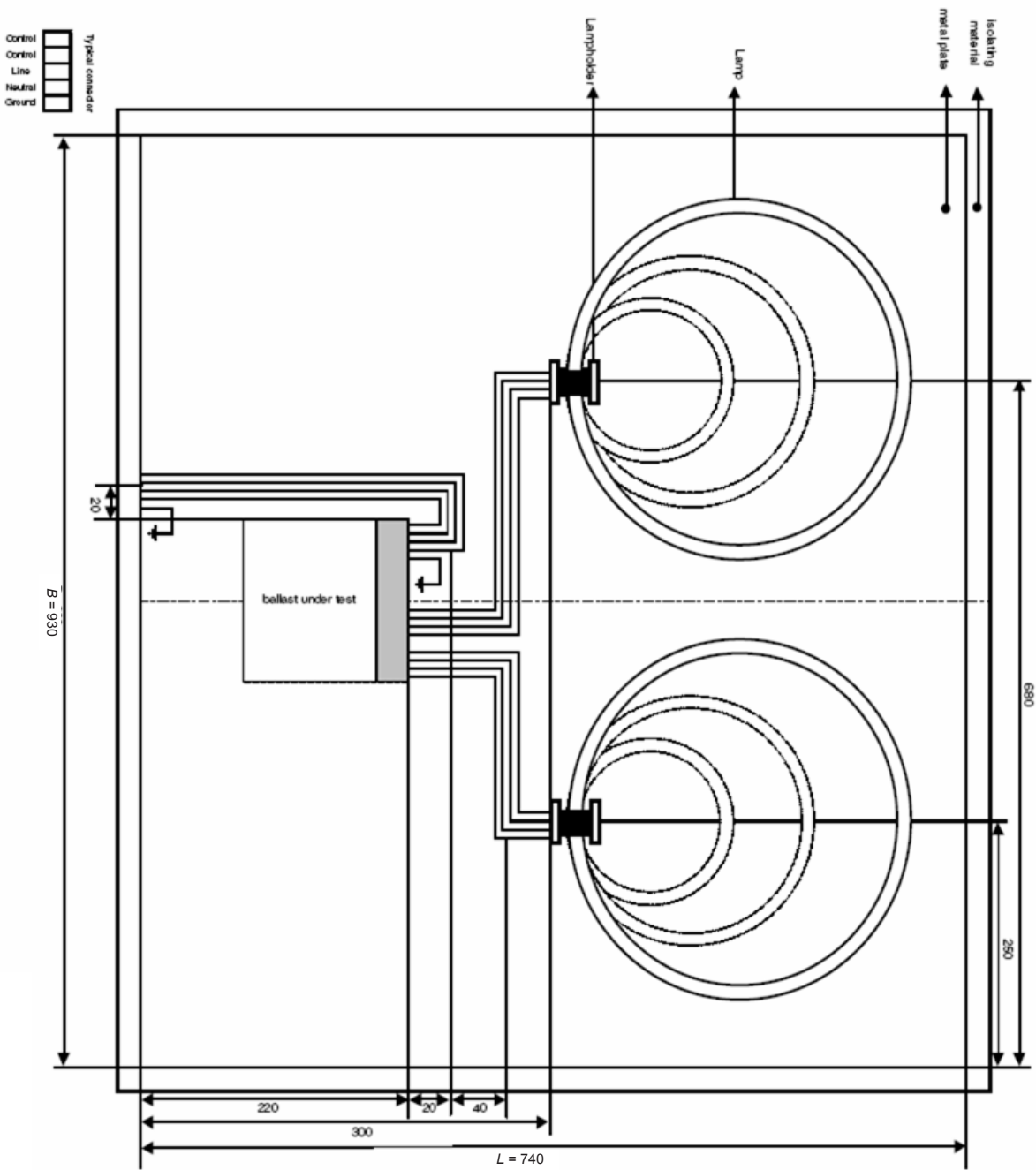
Dimensions in millimetres

Figure A.8 – Mounting and wiring schema of reference luminaires for one, two, three or four double-capped fluorescent lamps where the output terminals of the electronic control gear are positioned on both ends



Dimensions in millimetres

Figure A.9 – Mounting and wiring schema of a reference luminaire for one circular-shaped fluorescent lamp, single-sided electronic control gear terminals



Dimensions in millimetres

Figure A.10 – Mounting and wiring schema of a reference luminaire for two circular-shaped fluorescent lamps, single-sided electronic control gear terminals

British Standards Institution (BSI)

BSI is the national body responsible for preparing British Standards and other standards-related publications, information and services.

BSI is incorporated by Royal Charter. British Standards and other standardization products are published by BSI Standards Limited.

About us

We bring together business, industry, government, consumers, innovators and others to shape their combined experience and expertise into standards-based solutions.

The knowledge embodied in our standards has been carefully assembled in a dependable format and refined through our open consultation process. Organizations of all sizes and across all sectors choose standards to help them achieve their goals.

Information on standards

We can provide you with the knowledge that your organization needs to succeed. Find out more about British Standards by visiting our website at bsigroup.com/standards or contacting our Customer Services team or Knowledge Centre.

Buying standards

You can buy and download PDF versions of BSI publications, including British and adopted European and international standards, through our website at bsigroup.com/shop, where hard copies can also be purchased.

If you need international and foreign standards from other Standards Development Organizations, hard copies can be ordered from our Customer Services team.

Subscriptions

Our range of subscription services are designed to make using standards easier for you. For further information on our subscription products go to bsigroup.com/subscriptions.

With **British Standards Online (BSOL)** you'll have instant access to over 55,000 British and adopted European and international standards from your desktop. It's available 24/7 and is refreshed daily so you'll always be up to date.

You can keep in touch with standards developments and receive substantial discounts on the purchase price of standards, both in single copy and subscription format, by becoming a **BSI Subscribing Member**.

PLUS is an updating service exclusive to BSI Subscribing Members. You will automatically receive the latest hard copy of your standards when they're revised or replaced.

To find out more about becoming a BSI Subscribing Member and the benefits of membership, please visit bsigroup.com/shop.

With a **Multi-User Network Licence (MUNL)** you are able to host standards publications on your intranet. Licences can cover as few or as many users as you wish. With updates supplied as soon as they're available, you can be sure your documentation is current. For further information, email bsmusales@bsigroup.com.

BSI Group Headquarters

389 Chiswick High Road London W4 4AL UK

Revisions

Our British Standards and other publications are updated by amendment or revision.

We continually improve the quality of our products and services to benefit your business. If you find an inaccuracy or ambiguity within a British Standard or other BSI publication please inform the Knowledge Centre.

Copyright

All the data, software and documentation set out in all British Standards and other BSI publications are the property of and copyrighted by BSI, or some person or entity that owns copyright in the information used (such as the international standardization bodies) and has formally licensed such information to BSI for commercial publication and use. Except as permitted under the Copyright, Designs and Patents Act 1988 no extract may be reproduced, stored in a retrieval system or transmitted in any form or by any means – electronic, photocopying, recording or otherwise – without prior written permission from BSI. Details and advice can be obtained from the Copyright & Licensing Department.

Useful Contacts:

Customer Services

Tel: +44 845 086 9001

Email (orders): orders@bsigroup.com

Email (enquiries): cservices@bsigroup.com

Subscriptions

Tel: +44 845 086 9001

Email: subscriptions@bsigroup.com

Knowledge Centre

Tel: +44 20 8996 7004

Email: knowledgecentre@bsigroup.com

Copyright & Licensing

Tel: +44 20 8996 7070

Email: copyright@bsigroup.com



...making excellence a habit.™