

PD CEN/TR 16513:2014



BSI Standards Publication

Railway applications — Track — Survey of track geometry quality

bsi.

...making excellence a habit.™

National foreword

This Published Document is the UK implementation of CEN/TR 16513:2014.

The UK participation in its preparation was entrusted to Technical Committee RAE/2, Railway Applications — Track.

A list of organizations represented on this committee can be obtained on request to its secretary.

This publication does not purport to include all the necessary provisions of a contract. Users are responsible for its correct application.

© The British Standards Institution 2014.
Published by BSI Standards Limited 2014

ISBN 978 0 580 77867 4
ICS 93.100

Compliance with a British Standard cannot confer immunity from legal obligations.

This Published Document was published under the authority of the Standards Policy and Strategy Committee on 30 April 2014.

Amendments/corrigenda issued since publication

Date	Text affected
-------------	----------------------

ICS 93.100

English Version

Railway applications - Track - Survey of track geometry quality

Applications ferroviaires - Voie - Analyse de la qualité de la
géométrie de la voie

Bahnanwendungen - Oberbau - Überblick über die
geometrische Gleislagequalität

This Technical Report was approved by CEN on 18 May 2013. It has been drawn up by the Technical Committee CEN/TC 256.

CEN members are the national standards bodies of Austria, Belgium, Bulgaria, Croatia, Cyprus, Czech Republic, Denmark, Estonia, Finland, Former Yugoslav Republic of Macedonia, France, Germany, Greece, Hungary, Iceland, Ireland, Italy, Latvia, Lithuania, Luxembourg, Malta, Netherlands, Norway, Poland, Portugal, Romania, Slovakia, Slovenia, Spain, Sweden, Switzerland, Turkey and United Kingdom.



EUROPEAN COMMITTEE FOR STANDARDIZATION
COMITÉ EUROPÉEN DE NORMALISATION
EUROPÄISCHES KOMITEE FÜR NORMUNG

CEN-CENELEC Management Centre: Avenue Marnix 17, B-1000 Brussels

Contents

Page

Foreword	3
1 Scope	4
2 Terms and definitions	4
3 Symbols and abbreviations	4
4 Methodology	5
4.1 General considerations and confidentiality	5
4.2 Collected data	5
4.2.1 Scope of survey	5
4.2.2 Speed classes applied	5
4.2.3 Calculation of standard deviation	6
4.2.4 Calculation of cumulative frequency distributions	6
4.3 Data processing	6
5 Participating networks and involvement	6
5.1 Participating networks	6
5.2 Sample size of track data	7
6 Results	7
6.1 Results for standard deviation of longitudinal level	7
6.2 Results for standard deviation of alignment	9
6.3 Observation on results	11
7 Application of the results to EN 13848-6	12
Annex A (informative) Tables for cumulative frequency distributions for average track quality of all participating networks	13
Annex B (informative) Spread of data collected	15
Bibliography	17

Foreword

This document (CEN/TR 16513:2014) has been prepared by Technical Committee CEN/TC 256 "Railway applications", the secretariat of which is held by DIN.

Attention is drawn to the possibility that some of the elements of this document may be the subject of patent rights. CEN [and/or CENELEC] shall not be held responsible for identifying any or all such patent rights.

1 Scope

CEN/TC 256/SC 1/WG 28 "Railway applications/Infrastructure/Track geometry quality" conducted a survey of the geometric quality of track across European railway networks. This was to get an understanding and overview of the track geometry across Europe in order to support the definition of track geometric quality classes for the writing of EN 13848-6.

This Technical Report describes the methodology used for the survey and gives the results.

2 Terms and definitions

For the purposes of this document, the following terms and definitions apply.

2.1 track quality index

TQI

value that characterises track geometry quality of a track section based on parameters and measuring methods compliant with the EN 13848 series

2.2 track quality class

TQC

characterisation of track geometry quality as a function of speed and expressed as a range of *TQIs*

2.3 re-colouring

algorithm which converts one signal into a different signal and which is used in the EN 13848 series to convert a chord measurement signal into a *D1* or *D2* measurement signal

3 Symbols and abbreviations

For the purposes of this document, the following symbols and abbreviations apply.

Table 1 — Symbols and abbreviations

Symbol	Designation	Unit
AL	Alignment	mm
<i>D1</i>	Wavelength range $3\text{ m} < \lambda \leq 25\text{ m}$	m
<i>D2</i>	Wavelength range $25\text{ m} < \lambda \leq 70\text{ m}$	m
λ	Wavelength	m
LL	Longitudinal level	mm
<i>QN1</i>	50 % quality level according to EN 14363:2005	mm
<i>QN2</i>	90 % quality level according to EN 14363:2005	mm
<i>SD</i>	Standard deviation	mm
<i>TQI</i>	Track Quality Index	–
ETQS	European track quality survey	–
<i>TQC</i>	Track Quality Class	–
<i>V</i>	Speed	km/h

NOTE In this Technical Report, "AL" stands for "alignment" and is not to be confused with *AL* standing for "alert limit" as defined in EN 13848-5.

4 Methodology

4.1 General considerations and confidentiality

The objective of the European track quality survey (ETQS) was to get an understanding and overview of the track geometry quality across Europe assessed as standard deviations. In order to achieve this objective without an exchange of an enormous amount of raw data, an approach was agreed based on the evaluation of quality data of thirteen participating networks. The quality data of each network was provided in the form of cumulative frequency distributions of alignment and longitudinal level.

Each of the participating networks provided quality data for a representative part of their network according to the technical specification described below in 4.2. With the help of a standardized inquiry form, the cumulative frequency distributions of the quality data were determined and were sent to the CEN/TC 256/SC 1/WG 28 clearing office.

In order to make the data anonymous, the clearing office assigned a random network number to the quality data of each network and summarized the track geometry quality data in an anonymous comparison table. This was supplied to CEN/TC 256/SC 1/WG 28 only.

Without agreement of all participating networks neither the clearing office nor CEN/TC 256/SC 1/WG 28 may disclose or publish any of the quality data or the assignment between quality data and participating networks as a whole or in parts to anyone else.

4.2 Collected data

4.2.1 Scope of survey

The survey collected data for all main lines, main tracks in stations and isolated switches or group of switches situated in plain line and run at line speed. All side tracks, station tracks or other less important tracks were excluded.

The survey was based on measurements of track taken typically at 25 cm spacing which results in a large volume of data. For example, a network length of 10 000 km track would result in a cumulative frequency distribution comprising of over 40 million measuring points.

The survey was conducted using the most recent measurement value for each location. This was summarized in a cumulative frequency distribution.

Where it was not possible for a participating network to do the calculation over their whole network, the calculation was done for at least 5 % of the network while the track layout and track quality considered in the sample had to be as representative as possible for the network. The track length considered for each speed class had to be quoted in the standardized inquiry form.

4.2.2 Speed classes applied

The survey was done in five speed classes according to the EN 13848 series:

- $230 \text{ km/h} < V \leq 300 \text{ km/h}$
- $160 \text{ km/h} < V \leq 230 \text{ km/h}$
- $120 \text{ km/h} < V \leq 160 \text{ km/h}$
- $80 \text{ km/h} < V \leq 120 \text{ km/h}$
- $V \leq 80 \text{ km/h}$

Speeds higher than 300 km/h were not taken into account due to the lack of sufficient data.

In order to ensure anonymity of networks with high speed tracks, the network lengths of the participating networks were not disclosed in the final comparison table. They were just used as weighting factors to calculate a 'European Track Quality'.

4.2.3 Calculation of standard deviation

The survey was done using standard deviations of longitudinal level SD_{LL} and alignment SD_{AL} in the domain $D1$ ($3\text{ m} < \lambda \leq 25\text{ m}$) in accordance with EN 13848-1. Where the origin of the measurement data was chord based, they were re-coloured to obtain $D1$.

Data of left and right rail were combined as a mean of the standard deviations of each rail as follows:

$$SD_{LL} = \frac{SD_{LL,\text{left}} + SD_{LL,\text{right}}}{2} \quad (1)$$

$$SD_{AL} = \frac{SD_{AL,\text{left}} + SD_{AL,\text{right}}}{2} \quad (2)$$

The calculation of the standard deviation was specified as follows:

- calculation length: 200 m to 250 m;
- calculation step: preferably at every measurement databreak, e.g. 0,25 m. If not possible, a calculation step up to 250 m may be chosen.

Slightly different definitions of standard deviations were allowed if it was proven that the statistical influence on the cumulative frequency was small.

4.2.4 Calculation of cumulative frequency distributions

Once these parameters had been calculated the cumulative frequency distribution was determined in steps of 0,01 mm for each speed class.

4.3 Data processing

The cumulative frequency distributions of all participating networks for the five speed classes were produced and a weighted average was calculated for each step of the frequency distribution. The line length of each participating network in the considered speed class was used as weighting factor. In this way 'European Track Quality distributions' were determined for the five speed classes and both SD_{LL} and SD_{AL} . These cumulative frequency distributions are represented in Figures 1 and 3 and in Table A.1.

5 Participating networks and involvement

5.1 Participating networks

The following alphabetic list gives the networks that provided data to the survey:

Austria	ÖBB Infrastruktur
Belgium	Infrabel
Czech Republic	SZDC
Denmark	Rail Net Denmark
Finland	FTA
France	SNCF / RFF
Germany	DB Netz

Italy	RFI
Netherlands	ProRail
Portugal	REFER
Switzerland	SBB
Sweden	Trafikverket
United Kingdom	Network Rail

5.2 Sample size of track data

The survey comprised data for approximately 60 000 km of track. This represents a 37 % sample of the participating networks. The total track length of all the participating networks is about 160 000 km, this is more than half of the track length of the European Union member states.

Some networks provided data for nearly all the lines, others provided smaller samples. In any case, they have been chosen carefully as representative for the speed class in the whole network. Table 2 shows the coverage of the individual speed classes related to the respective track length.

Table 2 — Sample size of track data for each speed class

Speed range	Network length	Sample size	Percentage
230 km/h < $V \leq$ 300 km/h	6 368,3 km	3 237,0 km	45 %
160 km/h < $V \leq$ 230 km/h	16 631,9 km	7 554,1 km	45 %
120 km/h < $V \leq$ 160 km/h	68 548,5 km	17 357,6 km	25 %
80 km/h < $V \leq$ 120 km/h	36 012,5 km	16 643,1 km	46 %
$V \leq$ 80 km/h	31 959,5 km	14 897,8 km	47 %

6 Results

6.1 Results for standard deviation of longitudinal level

The distributions of the standard deviation of longitudinal level for each speed class are given in Figure 1. A detailed table can be found in Annex A.

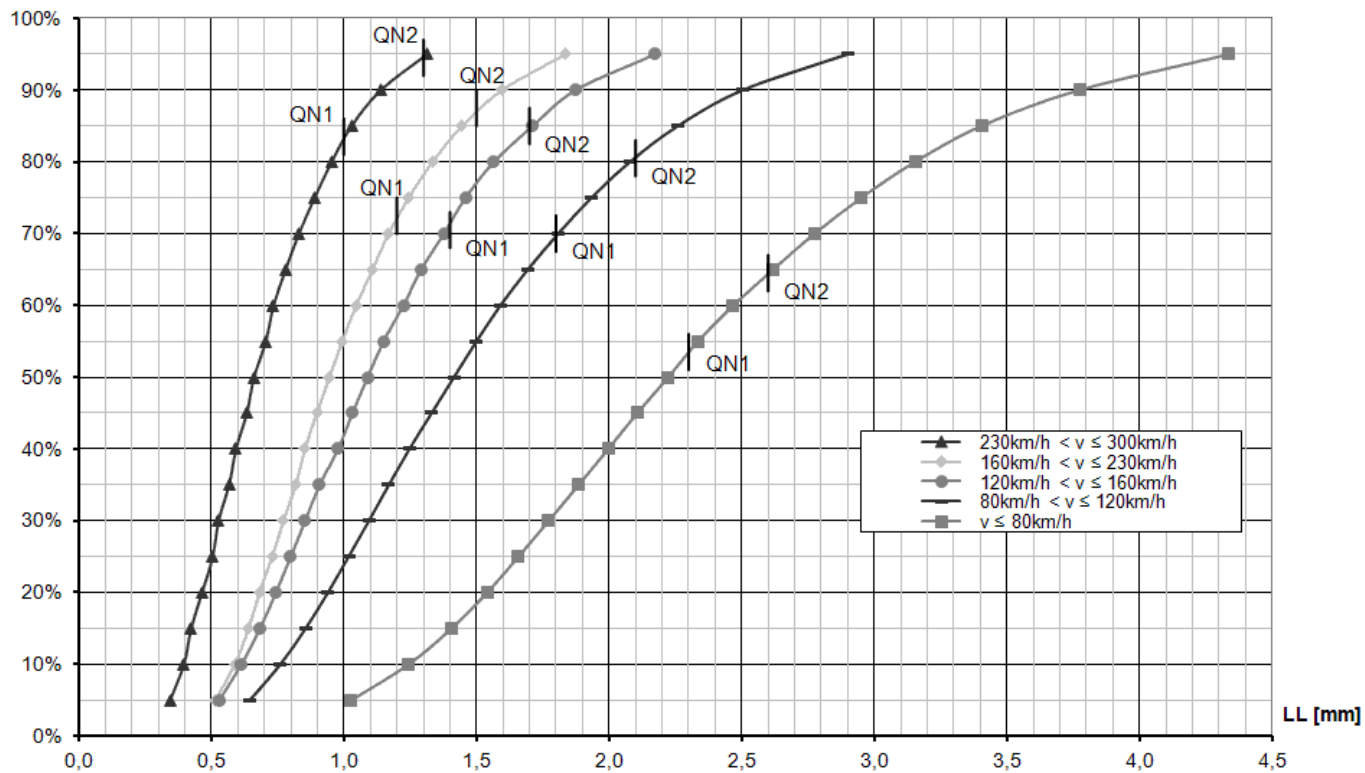


Figure 1 — ETQS results for longitudinal level SD_{LL}

The spread of the 90 % values of longitudinal level for participating networks is given in the following figure (Figure 2). The spread of the 50 % values is given in Annex B.

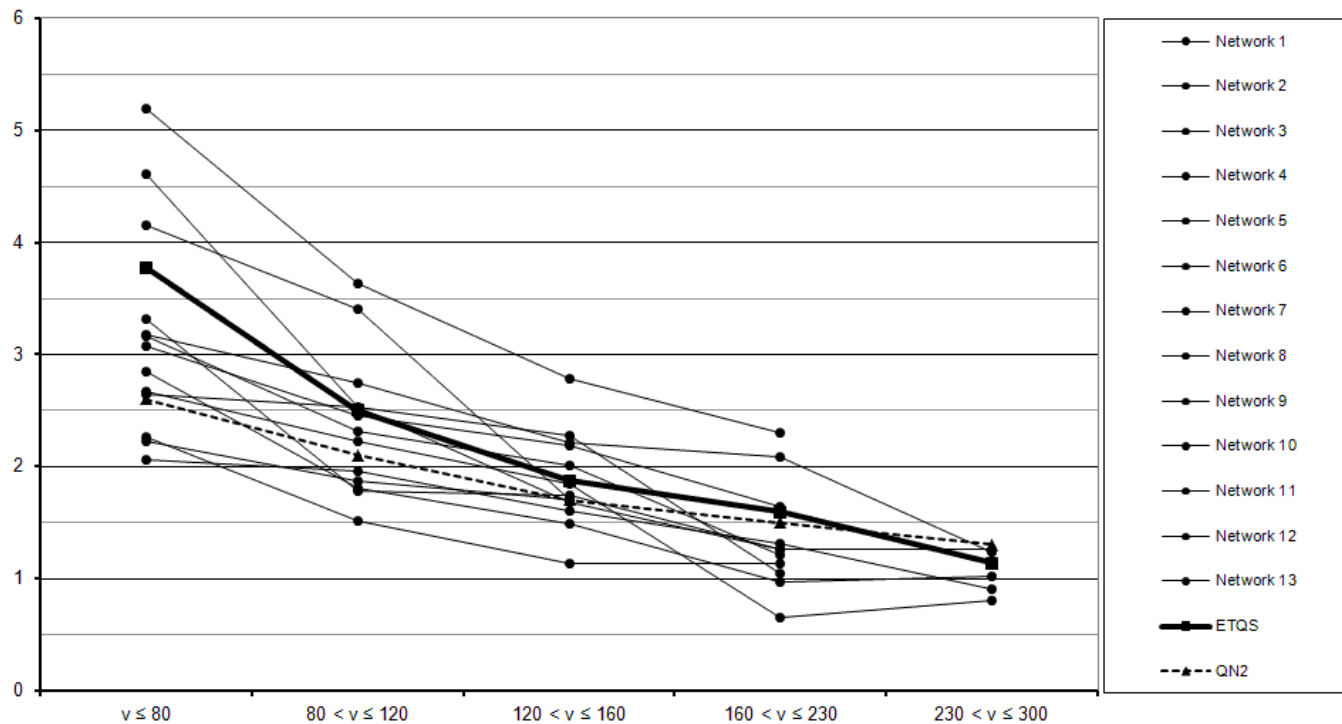


Figure 2 — Spread of 90 % percentile for longitudinal level SD_{LL}

6.2 Results for standard deviation of alignment

The distributions of the standard deviation of alignment for each speed class are given in the following figure (Figure 3). A detailed table can be found in Annex A.

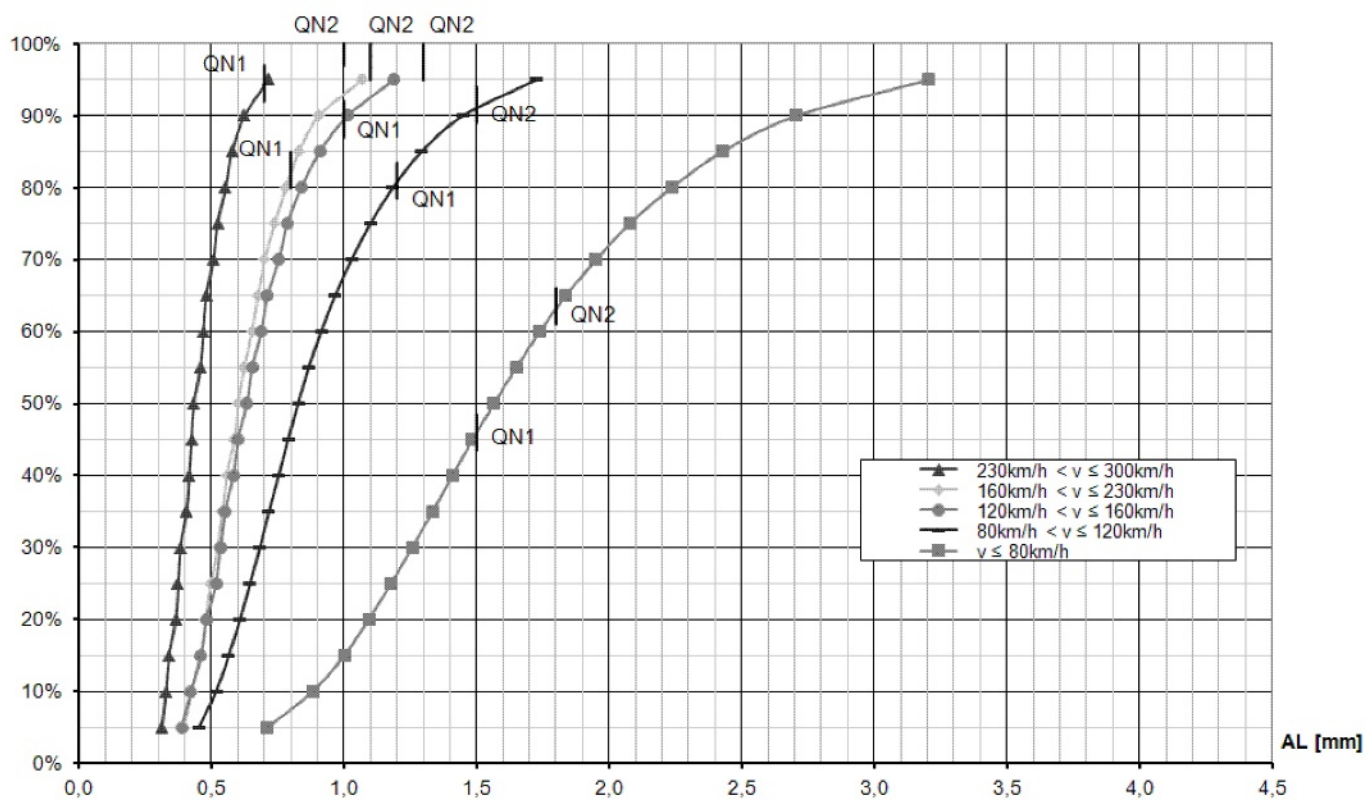


Figure 3 — ETQS results for alignment SD_{AL}

The spread of the 90 % values of alignment for participating networks is given in the following figure (Figure 4). The spread of the 50 % values is given in Annex B.

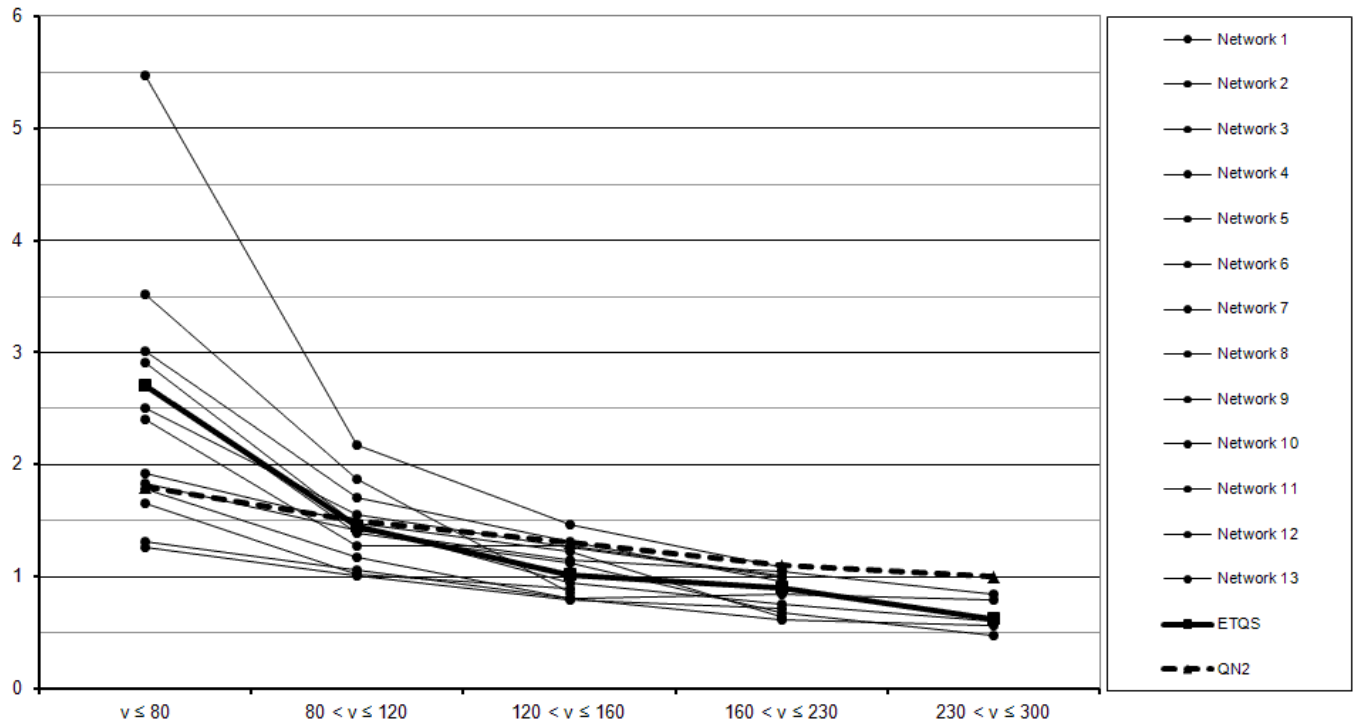


Figure 4 — Spread of 90 % percentile for alignment SD_{AL}

6.3 Observation on results

As expected, track quality improves with speed class. This can be observed for both longitudinal level and alignment.

The spread of track quality (90 % value of the distribution of standard deviations) between different networks is wider for low speeds ($V < 120$ km/h) than for high speeds ($V > 230$ km/h). This can be observed for both longitudinal level and alignment.

For a given speed class, this spread is also wider for longitudinal level than for alignment.

When comparing the survey results with $QN1$ and $QN2$ levels, it was found that:

- for most speed classes, $QN1$ and $QN2$ do not match the 50 % and 90 % values of the corresponding distributions for both alignment and longitudinal level (see Figures 1 and 3);
- for all speed classes up to 230 km/h, $QN2$ is lower than the 90 % values of the SD_{LL} distribution, however they are within 20 % except for lines up to and including 80 km/h (see Figure 1);
- for all speed classes, the 50 % values of the SD_{LL} distribution are better than $QN1$ levels (see Figure 1);
- for all speed classes above 80 km/h, the 50 % values of the SD_{AL} distribution are better than $QN1$ levels (see Figure 3),
- it is not practical to have a realistic track quality distribution that fits both $QN1$ and $QN2$. This is due to the closeness of their values.

Positioning $QN1$ and $QN2$ on the cumulative frequency distributions for all speed ranges leads to results presented in Table 3.

Table 3 — Track length for QN levels

	Length for SD_{LL}		Length of SD_{AL}	
	km	%	km	%
$\leq QN1$	108 380	68	124 591	79
$QN1 < SD \leq QN2$	19 664	12	19 881	12
$> QN2$	31 477	20	15 048	9
Sum	159 521	100	159 520	100

7 Application of the results to EN 13848-6

The definition of the TQC s in EN 13848-6 is based on the cumulative distribution of the weighted average of all the networks participating in the European track quality survey. The five TQC s are defined as follows:

- Class A – below 10 % of the distribution corresponding to the best 10 %;
- Class B – between 10 % and 30 % of the distribution;
- Class C – between 30 % and 70 % of the distribution;
- Class D – between 70 % and 90 % of the distribution;
- Class E – above 90 % of the distribution corresponding to the worst 10 %.

Annex A
(informative)

Tables for cumulative frequency distributions for average track quality of all participating networks

Table A.1 — *ETQs* results for longitudinal level SD_{LL} and alignment SD_{AL}

	SD_{LL} [mm]				
	$V \leq 80$ km/h	$(80 < V \leq 120)$ km/h	$(120 < V \leq 160)$ km/h	$(160 < V \leq 230)$ km/h	$(230 < V \leq 300)$ km/h
5 %	1,03	0,64	0,53	0,51	0,34
10 %	1,24	0,76	0,61	0,59	0,40
15 %	1,41	0,86	0,68	0,64	0,42
20 %	1,54	0,94	0,74	0,68	0,46
25 %	1,66	1,02	0,80	0,73	0,51
30 %	1,77	1,09	0,85	0,77	0,53
35 %	1,89	1,17	0,91	0,82	0,57
40 %	2,00	1,25	0,98	0,85	0,59
45 %	2,11	1,33	1,03	0,90	0,63
50 %	2,22	1,41	1,09	0,95	0,66
55 %	2,34	1,50	1,15	0,99	0,71
60 %	2,47	1,59	1,22	1,05	0,73
65 %	2,62	1,69	1,29	1,11	0,78
70 %	2,77	1,81	1,38	1,17	0,83
75 %	2,95	1,93	1,46	1,24	0,89
80 %	3,15	2,08	1,57	1,33	0,95
85 %	3,40	2,26	1,71	1,45	1,03
90 %	3,77	2,50	1,87	1,60	1,14
95 %	4,34	2,90	2,17	1,83	1,31

Table A.1 (continuous)

	SD_{AL} [mm]				
	$V \leq 80$ km/h	$(80 < V \leq 120)$ km/h	$(120 < V \leq 160)$ km/h	$(160 < V \leq 230)$ km/h	$(230 < V \leq 300)$ km/h
5 %	0,71	0,45	0,39	0,40	0,31
10 %	0,88	0,52	0,42	0,43	0,33
15 %	1,00	0,57	0,46	0,46	0,34
20 %	1,09	0,61	0,48	0,48	0,37
25 %	1,18	0,65	0,52	0,50	0,38
30 %	1,26	0,68	0,53	0,52	0,38
35 %	1,33	0,72	0,55	0,54	0,41
40 %	1,41	0,75	0,58	0,56	0,42
45 %	1,48	0,79	0,60	0,59	0,43
50 %	1,57	0,83	0,63	0,60	0,43
55 %	1,65	0,87	0,65	0,62	0,46
60 %	1,74	0,91	0,69	0,65	0,47
65 %	1,84	0,97	0,71	0,68	0,48
70 %	1,95	1,03	0,75	0,70	0,51
75 %	2,08	1,10	0,79	0,74	0,52
80 %	2,24	1,18	0,84	0,78	0,55
85 %	2,43	1,29	0,91	0,83	0,58
90 %	2,71	1,45	1,01	0,91	0,63
95 %	3,21	1,73	1,19	1,07	0,71

Annex B (informative)

Spread of data collected

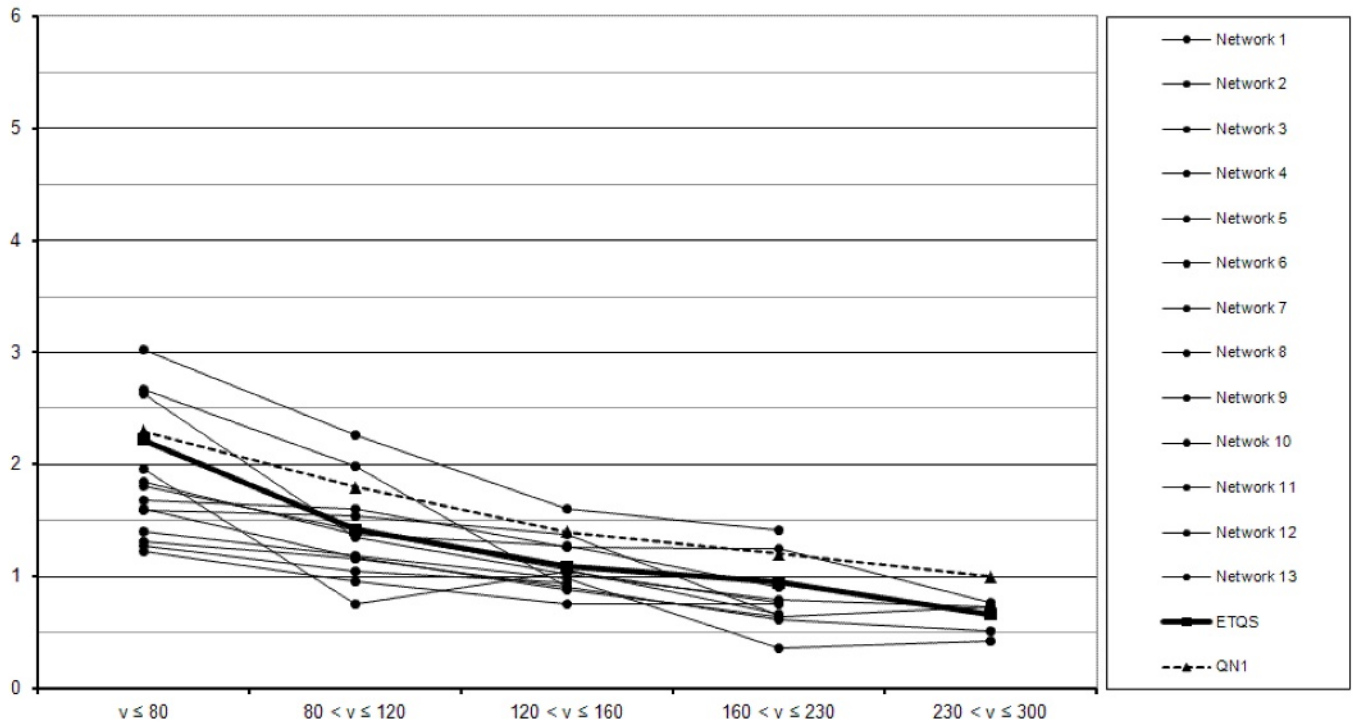


Figure B.1 — Spread of 50 % percentile for longitudinal level SD_{LL}

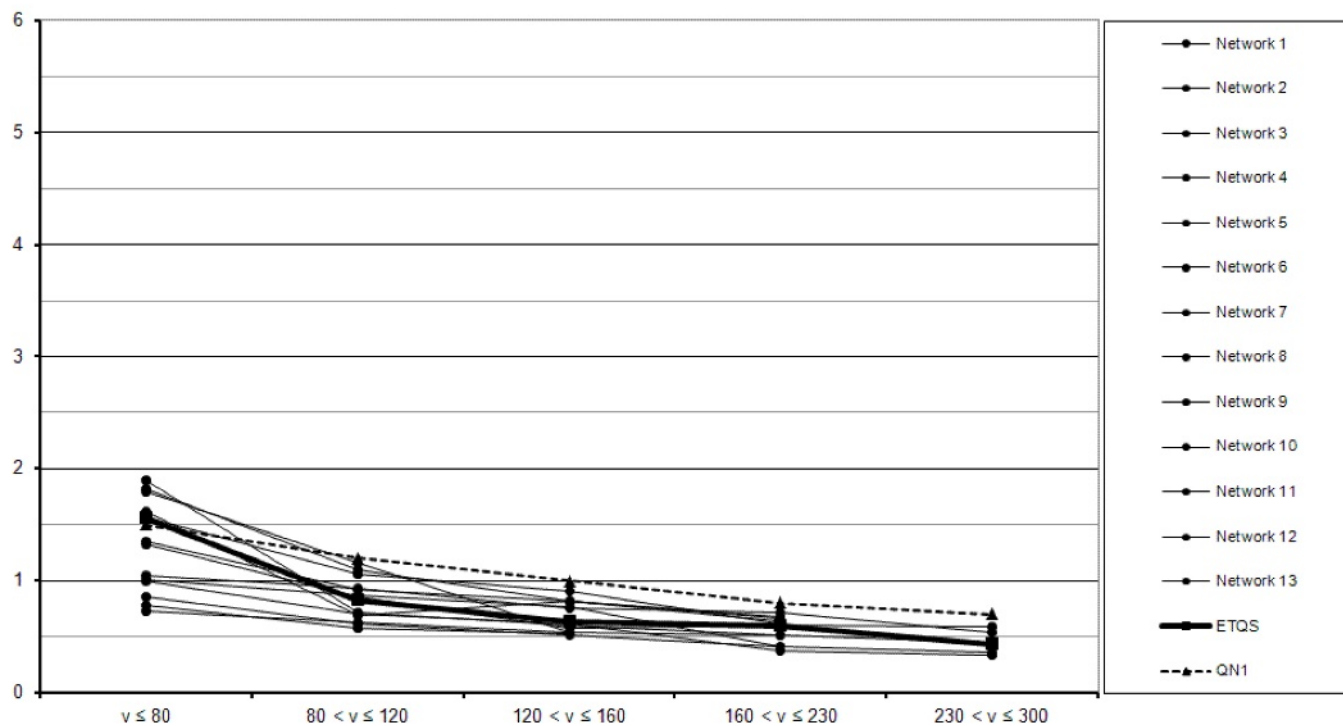


Figure B.2 — Spread of 50 % percentile for alignment level SD_{AL}

Bibliography

- [1] EN 13848-1, *Railway applications — Track — Track geometry quality — Part 1: Characterisation of track geometry*
- [2] EN 13848-2, *Railway applications — Track - Track geometry quality — Part 2: Measuring systems — Track recording vehicles*
- [3] EN 13848-3, *Railway applications — Track — Track geometry quality — Part 3: Measuring systems — Track construction and maintenance machines*
- [4] EN 13848-4, *Railway applications — Track — Track geometry quality — Part 4: Measuring systems - Manual and lightweight devices*
- [5] EN 13848-5, *Railway applications — Track — Track geometry quality — Part 5: Geometric quality levels — Plain line*
- [6] EN 13848-6, *Railway applications — Track — Track geometry quality — Part 6: Characterisation of track geometry quality*
- [7] EN 14363:2005, *Railway applications — Testing for the acceptance of running characteristics of railway vehicles — Testing of running behaviour and stationary tests*

British Standards Institution (BSI)

BSI is the national body responsible for preparing British Standards and other standards-related publications, information and services.

BSI is incorporated by Royal Charter. British Standards and other standardization products are published by BSI Standards Limited.

About us

We bring together business, industry, government, consumers, innovators and others to shape their combined experience and expertise into standards-based solutions.

The knowledge embodied in our standards has been carefully assembled in a dependable format and refined through our open consultation process. Organizations of all sizes and across all sectors choose standards to help them achieve their goals.

Information on standards

We can provide you with the knowledge that your organization needs to succeed. Find out more about British Standards by visiting our website at bsigroup.com/standards or contacting our Customer Services team or Knowledge Centre.

Buying standards

You can buy and download PDF versions of BSI publications, including British and adopted European and international standards, through our website at bsigroup.com/shop, where hard copies can also be purchased.

If you need international and foreign standards from other Standards Development Organizations, hard copies can be ordered from our Customer Services team.

Subscriptions

Our range of subscription services are designed to make using standards easier for you. For further information on our subscription products go to bsigroup.com/subscriptions.

With **British Standards Online (BSOL)** you'll have instant access to over 55,000 British and adopted European and international standards from your desktop. It's available 24/7 and is refreshed daily so you'll always be up to date.

You can keep in touch with standards developments and receive substantial discounts on the purchase price of standards, both in single copy and subscription format, by becoming a **BSI Subscribing Member**.

PLUS is an updating service exclusive to BSI Subscribing Members. You will automatically receive the latest hard copy of your standards when they're revised or replaced.

To find out more about becoming a BSI Subscribing Member and the benefits of membership, please visit bsigroup.com/shop.

With a **Multi-User Network Licence (MUNL)** you are able to host standards publications on your intranet. Licences can cover as few or as many users as you wish. With updates supplied as soon as they're available, you can be sure your documentation is current. For further information, email bsmusales@bsigroup.com.

BSI Group Headquarters

389 Chiswick High Road London W4 4AL UK

Revisions

Our British Standards and other publications are updated by amendment or revision.

We continually improve the quality of our products and services to benefit your business. If you find an inaccuracy or ambiguity within a British Standard or other BSI publication please inform the Knowledge Centre.

Copyright

All the data, software and documentation set out in all British Standards and other BSI publications are the property of and copyrighted by BSI, or some person or entity that owns copyright in the information used (such as the international standardization bodies) and has formally licensed such information to BSI for commercial publication and use. Except as permitted under the Copyright, Designs and Patents Act 1988 no extract may be reproduced, stored in a retrieval system or transmitted in any form or by any means – electronic, photocopying, recording or otherwise – without prior written permission from BSI. Details and advice can be obtained from the Copyright & Licensing Department.

Useful Contacts:

Customer Services

Tel: +44 845 086 9001

Email (orders): orders@bsigroup.com

Email (enquiries): cservices@bsigroup.com

Subscriptions

Tel: +44 845 086 9001

Email: subscriptions@bsigroup.com

Knowledge Centre

Tel: +44 20 8996 7004

Email: knowledgecentre@bsigroup.com

Copyright & Licensing

Tel: +44 20 8996 7070

Email: copyright@bsigroup.com



...making excellence a habit.™