

Medical gas pipeline systems —

Part 6: Dimensions and allocation of probes for terminal units for compressed medical gases and vacuum

ICS 11.040.10; 23.040.60

National foreword

This Draft for Development is the English language version of ENV 737-6:2003, which is a Special Status European Prestandard.

This publication is not to be regarded as a British Standard.

It is being issued in the Draft for Development series of publications and is of a provisional nature because of the reasons given in the Foreword to ENV 737-6, i.e. principally to allow existing national standards for probes to continue in existence so that probes complying with the dimensions specified in those standards may continue to be used for new medical gas installations and the extension and maintenance of existing installations. It should be applied on this provisional basis, so that information and experience of its practical application may be obtained. BS 5682:1998 will remain in effect.

A Special Status European Prestandard differs from an ENV or Technical Specification by being exempt from the necessity of regular review as to suitability for its conversion into a European Standard, although such reviews can be undertaken should circumstances indicate. If such a review is undertaken in future, comments arising from the use of this Draft for Development will be requested so that UK experience can be reported to the European organization responsible for its proposed conversion into a European Standard. Notification of the start of any such review period will be made in an announcement in the appropriate issue of *Update Standards* and, according to the replies received by the end of the review period, the responsible BSI Committee will decide whether to support the conversion of ENV 737-6 into a European Standard or to withdraw it.

Comments relating to experience of the use of DD ENV 737-6 should be sent in writing to the Secretary of BSI Technical Committee CH/121/6, Medical gas supply systems, at 389 Chiswick High Road, London W4 4AL, giving the document reference and clause number and proposing, where appropriate, suggestions for revision of the text.

A list of organizations represented on this committee can be obtained on request to its secretary.

Cross-references

The British Standards which implement international or European publications referred to in this document may be found in the *BSI Catalogue* under the section entitled "International Standards Correspondence Index", or by using the "Search" facility of the *BSI Electronic Catalogue* or of British Standards Online.

Summary of pages

This document comprises a front cover, an inside front cover, the ENV title page, pages 2 to 14, an inside back cover and a back cover.

The BSI copyright date displayed in this document indicates when the document was last issued.

Amendments issued since publication

Amd. No.	Date	Comments

This Draft for Development was published under the authority of the Standards Policy and Strategy Committee on 29 April 2003

© BSI 29 April 2003

ISBN 0 580 41648 8

ICS 11.040.10; 23.040.60

English version

**Medical gas pipeline systems - Part 6: Dimensions and
allocation of probes for terminal units for compressed medical
gases and vacuum**

Système de distribution de gaz médicaux - Partie 6:
Dimensions et attribution des embouts pour prises murales
pour gaz médicaux comprimés et pour le vide (aspiration)

Rohrleistungssysteme für medizinische Gase - Teil 6:
Maße und Zuordnung von Steckern für Entnahmestellen für
medizinische Druckgase und Vakuum

This European Prestandard (ENV) was approved by CEN on 18 December 2002 as a prospective standard for provisional application.

The period of validity of this ENV is limited initially to three years. After two years the members of CEN will be requested to submit their comments, particularly on the question whether the ENV can be converted into a European Standard.

CEN members are required to announce the existence of this ENV in the same way as for an EN and to make the ENV available promptly at national level in an appropriate form. It is permissible to keep conflicting national standards in force (in parallel to the ENV) until the final decision about the possible conversion of the ENV into an EN is reached.

CEN members are the national standards bodies of Austria, Belgium, Czech Republic, Denmark, Finland, France, Germany, Greece, Hungary, Iceland, Ireland, Italy, Luxembourg, Malta, Netherlands, Norway, Portugal, Slovakia, Spain, Sweden, Switzerland and United Kingdom.



EUROPEAN COMMITTEE FOR STANDARDIZATION
COMITÉ EUROPÉEN DE NORMALISATION
EUROPÄISCHES KOMITEE FÜR NORMUNG

Management Centre: rue de Stassart, 36 B-1050 Brussels

Contents

	page
Foreword.....	3
Introduction	4
1 Scope	5
2 Normative references	5
3 Terms and definitions	6
4 Uses of probes	7
5 Dimensions	7
6 Allocation	7
Bibliography	14

Foreword

This document (ENV 737-6:2003) has been prepared by Technical Committee CEN/TC 215 "Respiratory and anaesthetic equipment" the secretariat of which is held by BSI as a Special Status European Prestandard (ENV).

EN 737 consists of the following Parts under the general title "Medical gas pipeline systems":

Part 1: *Terminal units for compressed medical gases and vacuum*

Part 2: *Anaesthetic gas scavenging disposal systems – Basic requirements*

Part 3: *Pipelines for compressed medical gases and vacuum*

Part 4: *Terminal units for anaesthetic gas scavenging systems*

Part 6: *Dimensions and allocation of probes for terminal units for compressed medical gases and vacuum*

Taking into account that:

- there are CEN member countries using terminal units and probes which comply with EN 737-1 and which have dimensions of probes complying with the national standards of Austria (ÖNORM 7387 series), France (AFNOR NF S 90-116), Germany (DIN 13260, Teil 2), Italy (UNI 9507), Sweden (SS 87 524 30) and United Kingdom (BS 5682);
- there are CEN member countries using terminal units and probes of existing proprietary design which comply with EN 737-1 and which have published gas-specific dimensions and tolerances;
- some of these national standards and proprietary designs have a special status defined by law or regulation and cannot therefore be changed or withdrawn;

this document is published as a Special Status European Prestandard (ENV) for the following reasons:

- CEN members will not be bound to implement the ENV; they need only make the ENV available at national level in the form of e.g. "Draft for development";
- the dimensions of probes given in the conflicting national standards listed above will not be withdrawn and may be kept in force in parallel to those given in the European Prestandard;
- terminal units and probes which comply with EN 737-1 and which have dimensions complying with the conflicting national standards listed above may continue to be installed and used for both new installations and extensions of existing installations as specified by appropriate National Authorities;
- terminal units and probes of existing proprietary design which comply with EN 737-1, which have published gas-specific dimensions and tolerances may continue to be installed and used for both new installations and extensions of existing installations as specified by appropriate National Authorities, provided that it is neither possible for probes complying with ENV 737-6 to lock into and/or release gas from sockets complying with each proprietary design nor possible for probes complying with each proprietary design to lock into and to release gas from sockets complying with ENV 737-6;
- it will be possible to install and use terminal units and probes complying with EN 737-1 and this European Prestandard for field trials in health care facilities by agreement with appropriate National Authorities.

According to the CEN/CENELEC Internal Regulations, the national standards organizations of the following countries are bound to announce this European Prestandard: Austria, Belgium, Czech Republic, Denmark, Finland, France, Germany, Greece, Hungary, Iceland, Ireland, Italy, Luxembourg, Malta, Netherlands, Norway, Portugal, Slovakia, Spain, Sweden, Switzerland and the United Kingdom.

Introduction

Terminal units are the points on a medical gas supply system where the operator makes connections and disconnections for the supply of specified medical gases to anaesthetic machines, lung ventilators or other items of medical equipment, and where a wrong connection can create a hazard to the life of a patient. Connection of medical equipment to a terminal unit is made by inserting a gas-specific probe into a gas-specific connection point on the appropriate terminal unit. Both the probe and the terminal unit are to be gas-specific to ensure that the correct gas is delivered to the medical equipment.

It is important therefore that probes and the corresponding gas-specific connection points are designed and manufactured in such a way as to meet the requirements specified in this European Prestandard.

This European Prestandard gives the dimensions and allocation of probes and the corresponding gas-specific connection points, in order to ensure that only one design of probe is used for each specified medical gas.

1 Scope

This European Prestandard specifies the dimensions and allocation of probes intended to be connected to terminal units of medical gas pipeline systems specified in EN 737-3 for use with the following medical gases:

- oxygen;
- nitrous oxide;
- medical air;
- carbon dioxide;
- oxygen/nitrous oxide mixture (50/50 % V/V);
- air for driving surgical tools;
- nitrogen for driving surgical tools;
- vacuum.

It is intended to ensure that only gas-specific probes are used so as to prevent wrong connection of probes to terminal units for different gases.

This European Prestandard specifies the dimensions of the probe intended to be connected to terminal units of medical gas pipeline systems specified in EN 737-3 for supply and disposal of air for driving surgical tools.

This European Prestandard specifies the dimensions and allocation of each gas-specific connection point.

This European Prestandard does not specify the dimensions of NIST connectors. These dimensions are given in EN 739.

This European Prestandard does not specify the dimensions of probes intended to be connected to terminal units for anaesthetic gas scavenging systems. These dimensions are given in EN 737-4.

This European Prestandard does not specify the suitability of material, cleanliness, testing, gas-specificity, identification and information. These are specified in EN 737-1 which also applies to probes and gas-specific connection points.

2 Normative references

This European Prestandard incorporates, by dated or undated references, provisions from other publications. These normative references are cited at the appropriate places in the text, and the publications are listed hereafter. For dated references, subsequent amendments to or revision of any of these publications apply to this European Prestandard only when incorporated in it by amendment or revision. For undated references the latest edition of the publication referred to applies (including amendments).

EN 20286-1, *ISO system of limits and fits - Part 1: Bases of tolerances, deviations and fits (ISO 286-1:1988)*.

3 Terms and definitions

For the purposes of this European Prestandard, the following terms and definitions apply.

3.1

gas-specific

having characteristics which prevent interchangeability and thereby allow assignment to one gas or vacuum service only

3.2

gas-specific connection point

that part of the socket which is the receptor for a gas-specific probe

3.3

medical gas

any gas or mixture of gases intended to be administered to patients for therapeutic, diagnostic or prophylactic purposes, or for surgical tool application

3.4

medical gas pipeline system

central supply system with control equipment, a pipeline distribution system and terminal units at the points where medical gases or vacuum can be required

3.5

medical gas supply system

either

a medical gas pipeline system; or

any other installation having no permanent pipeline system but employing a medical gas supply source complete with pressure regulators

3.6

NIST (non-interchangeable screw-threaded) connector

range of male and female components intended to maintain gas specificity by the allocation of a set of different diameters and a left or right hand screw thread to the mating components for each particular gas

3.7

probe

non-interchangeable male component designed for acceptance by and retention in the socket

3.8

socket

that part of a terminal unit which is either integral or attached to the base block by a gas-specific interface and which contains the gas-specific connection point

3.9

terminal unit

outlet assembly (inlet for vacuum) of a medical gas supply system at which the operator makes connections and disconnections

3.10

terminal unit for supply and disposal of air for driving surgical tools

combination of an outlet assembly (for supply) and an inlet assembly (for disposal) which are connected to a supply system and to a disposal system respectively and at which the operator makes connections and disconnections by means of a combined probe

4 Uses of probes

Typical examples of the use of probes are given in Figure 1.

5 Dimensions

5.1 Dimensions of probes for compressed medical gases and vacuum shall comply with Figure 2 and Table 1.

5.2 Dimensions of gas-specific connection points for compressed medical gases and vacuum shall comply with Figure 3 and Table 2.

5.3 Dimensions of the probe for supply and disposal of air for driving surgical tools shall comply with Figure 4.

NOTE These dimensions are based on those in E DIN 13260, Teil 3.

5.4 Dimensions of the gas-specific connection point for supply and disposal of air for driving surgical tools shall comply with Figure 5.

5.5 Compliance with 5.1 to 5.4 shall be verified by measurement.

6 Allocation

6.1 Allocation of probes and gas-specific connection points for compressed medical gases and vacuum shall comply with Table 3.

6.2 Compliance with 6.1 shall be verified by visual inspection.

Table 1 — Diameters of probes in Figure 2

Dimensions in millimetres

Probe number	A^a (c9)	B^a (c9)
1	12,5	15,5
2	11,5	16,5
3	10,5	17,5
4	9,5	18,5
5	8,5 (f7)	19,5

^a Tolerances shall be in accordance with EN 20286-1.

Table 2 — Diameters of gas-specific connection points in Figure 3

Dimensions in millimetres

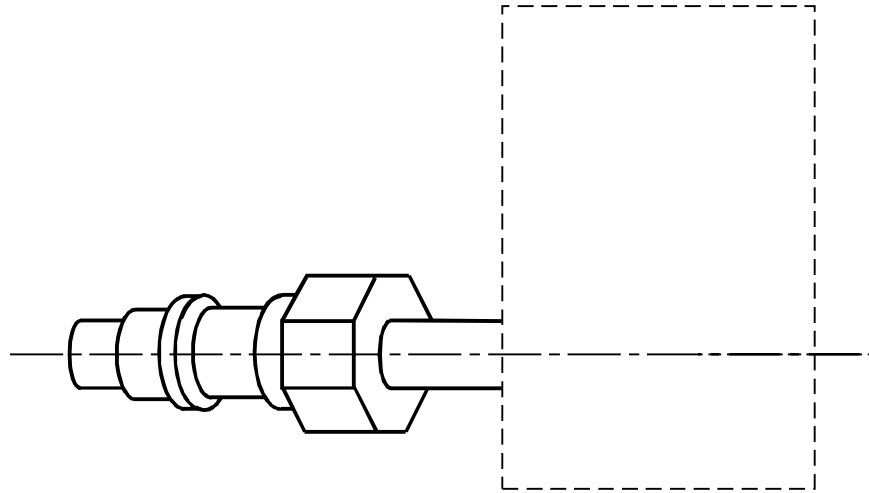
Gas-specific connection point number	C^a (H11)	D^a (H11)
1	12,5	15,5
2	11,5	16,5
3	10,5	17,5
4	9,5	18,5
5	8,5 (H7)	19,5

^a Tolerances shall be in accordance with EN 20286-1.

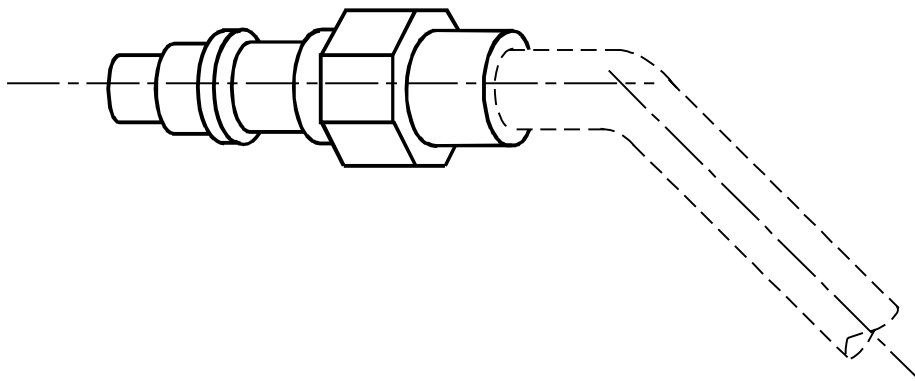
Table 3 — Allocation of probes and gas-specific connection points for compressed medical gases and vacuum

Profile	A	B	C	D	E
Probe and gas-specific connection point number					
1	NFU	Nitrous oxide	NFU	Carbon dioxide	NFU
2	Not assigned	NFU	O ₂ / N ₂ O 50/50 % (V/V)	NFU	Nitrogen (Tool drive)
3	NFU	NFU	NFU	Vacuum	NFU
4	Oxygen	NFU	Medical air	NFU	Air (Tool drive)
5	NFU	NFU	NFU	Not assigned	NFU

NOTE NFU = Not For Use (in order to maximize the safety level, profile B has been allocated to nitrous oxide only).

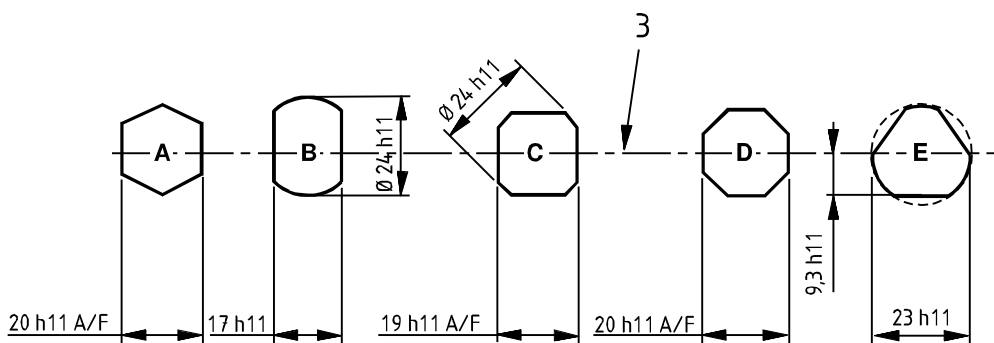
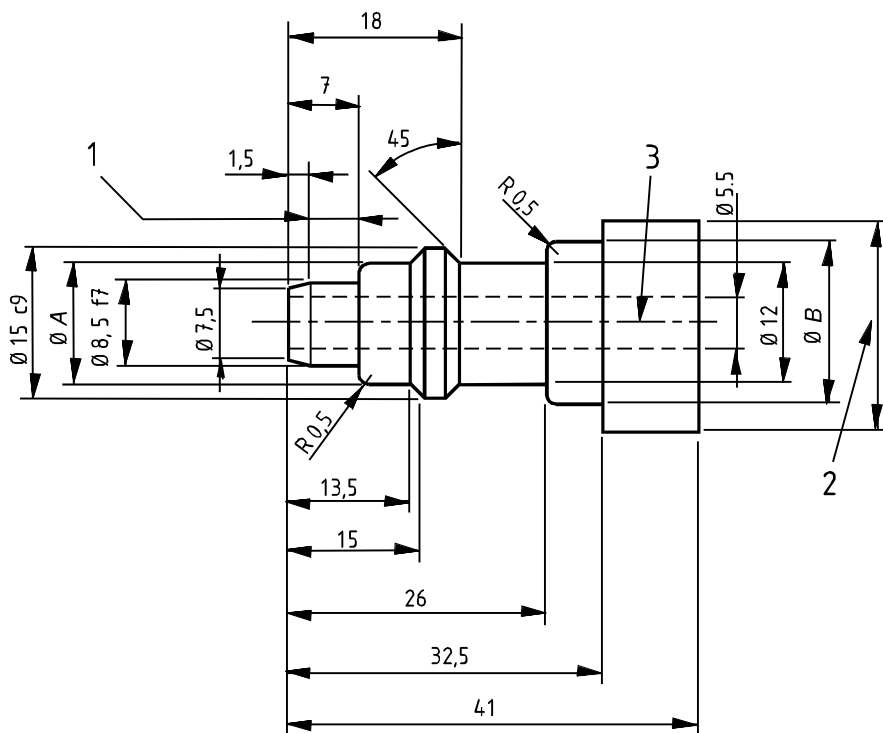


a) Probe directly connected to medical equipment



b) Probe connected to a flexible hose

Figure 1 — Typical examples of the use of probes



Key

- 1 Probe sealing area
- 2 Profile A, B, C, D or E
- 3 Horizontal centre line

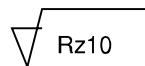
NOTE 1 See Table 1 for ϕA and ϕB .

NOTE 2 All length limit deviations to be $\pm 0,1$ mm.

NOTE 3 All diameters to be $\pm 0,05$ mm unless otherwise specified.

NOTE 4 All diameters to be concentric to within 0,03 mm.

NOTE 5 Surface roughness to be

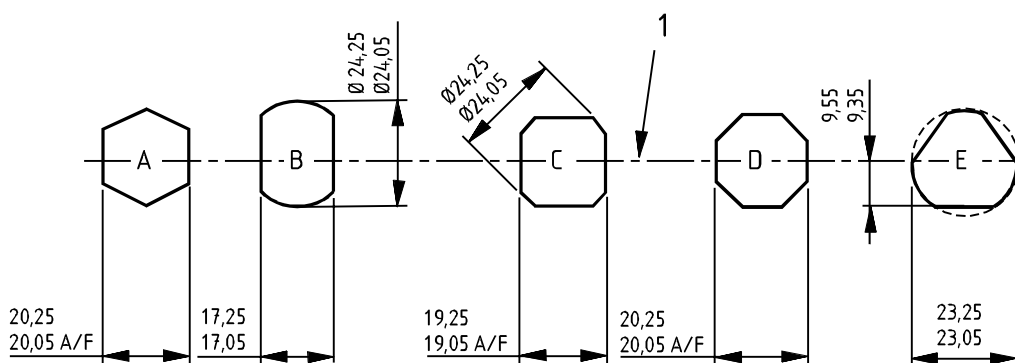
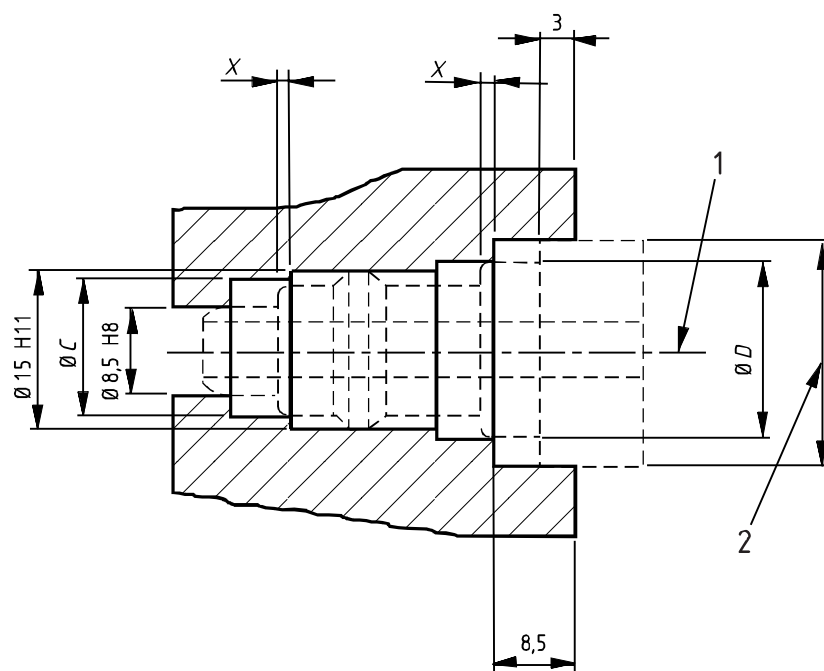


after any surface treatment unless otherwise specified.

NOTE 6 All sharp edges and burrs to be removed (maximum radius 0,2 mm unless otherwise specified).

Figure 2 — Dimensions and profiles of probes

Dimensions in millimetres



Key

- 1 Horizontal centre line
- 2 Profile A, B, C, D or E
- X minimum engagement of 1 mm when in parking position (if fitted)

NOTE 1 See Table 2 for $\varnothing C$ and $\varnothing D$.

NOTE 3 All diameters to be concentric to within 0,03 mm.

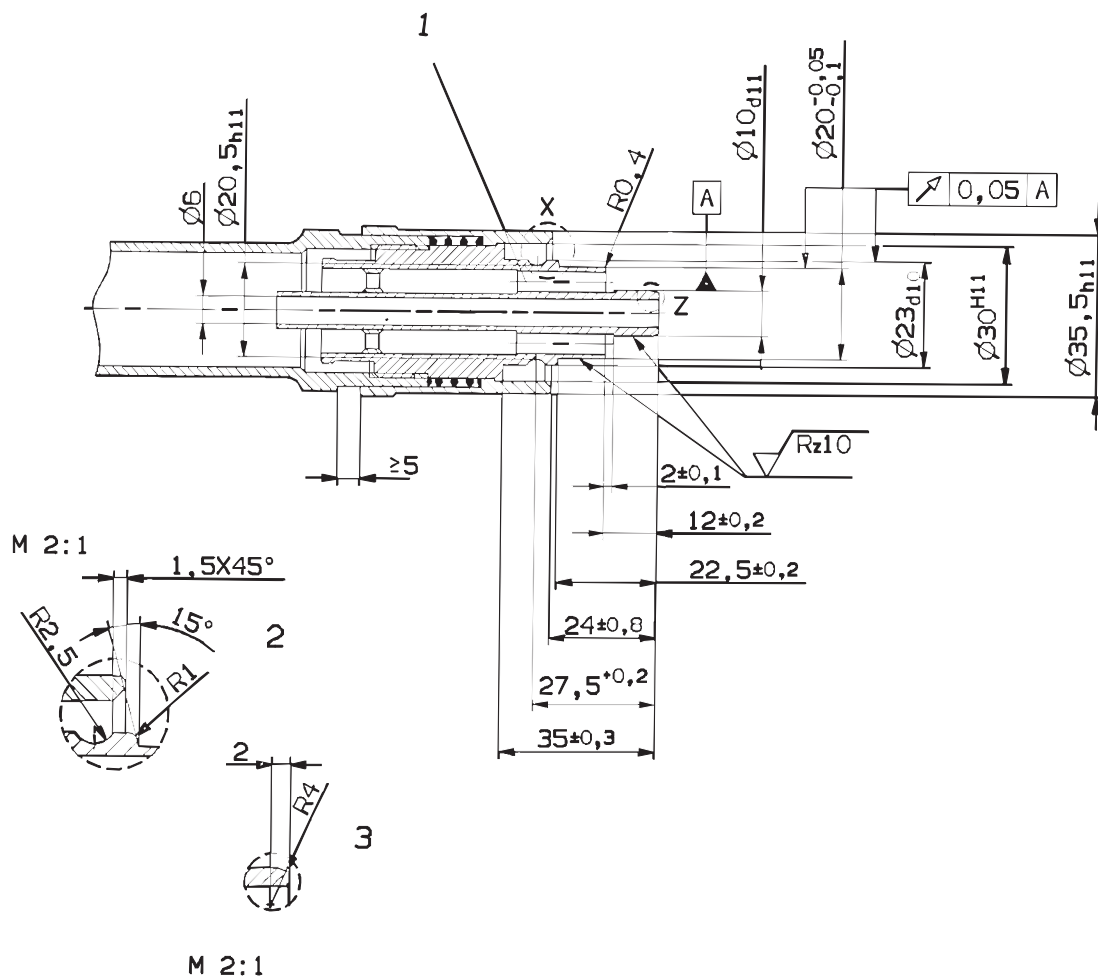
NOTE 2 All length limit deviations to be $\pm 0,1$ mm.

NOTE 4 Surface roughness to be



after any surface treatment unless otherwise specified.

Figure 3 — Dimensions and profiles of gas-specific connection points



Key

- 1 Clear area 127 mm^2
- 2 Detail of X
- 3 Detail of Z

NOTE All length limit deviations to be $\pm 0,1 \text{ mm}$.

Figure 4 — Dimensions of probe for supply and disposal of air for driving surgical tools

Dimensions in millimetres

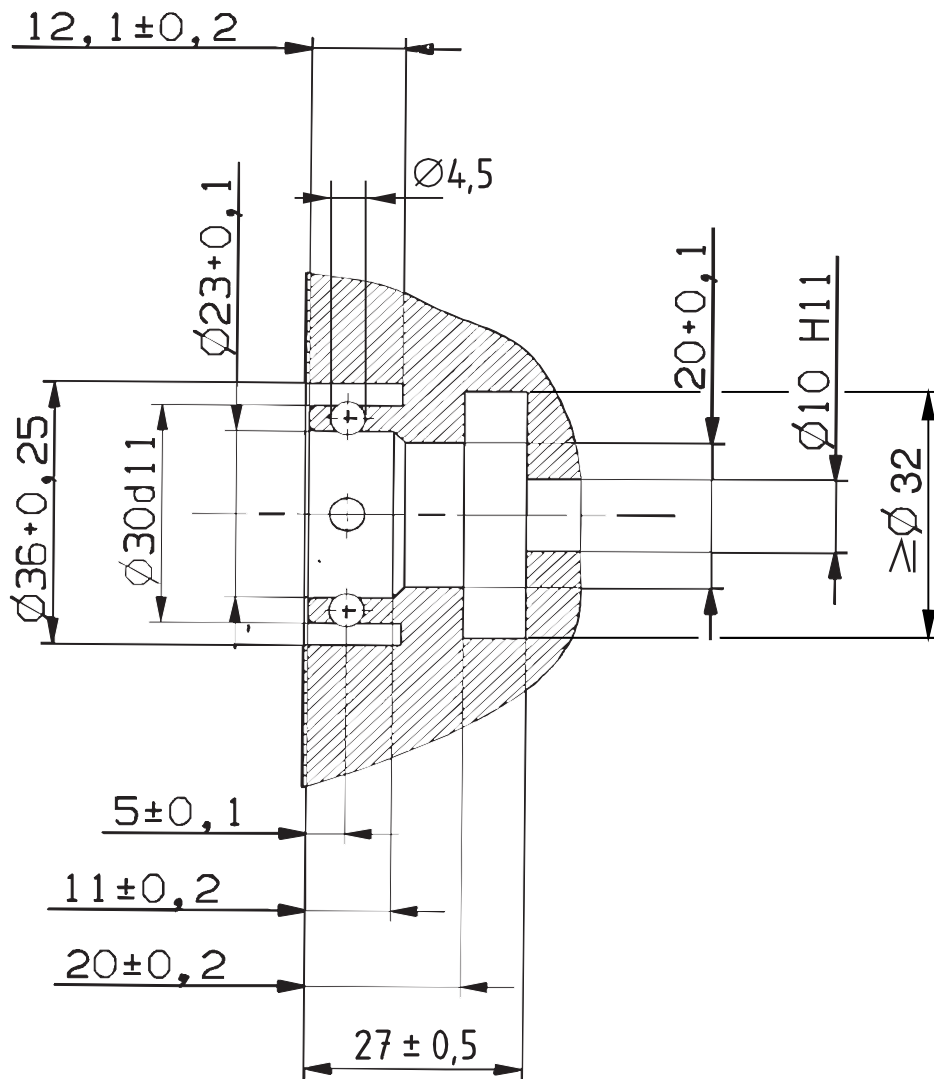


Figure 5 — Dimensions of gas-specific connection point for supply and disposal of air for driving surgical tools

Bibliography

- EN 737-1, *Medical gas pipeline systems — Part 1: Terminal units for compressed medical gases and vacuum.*
- EN 737-3, *Medical gas pipeline systems — Part 3: Pipelines for compressed medical gases and vacuum.*
- EN 737-4, *Medical gas pipeline systems — Part 4: Terminal units for anaesthetic gas scavenging systems.*
- EN 739, *Low-pressure hose assemblies for use with medical gases.*
- BS 5682:1998, *Specification for probes (quick connectors) for use with medical gas pipeline systems.*
- DIN 13260, Teil 2:1984, *Medical gas supply systems; terminal units for medical gases and vacuum; requirements, testing.*
- E DIN 13260, Teil 3, *Medical gas supply systems; terminal units for supply and disposal of compressed air for air driven tools; requirements, testing.*
- NF S 90-116:1988, *Medico-surgical equipment. Terminal units and related probes for medical fluids.*
- ÖNorm 7387 series, *Central gas distribution plants.*
- SS 87 524 30:1990, *Anaesthetic equipment - Connectors for medical gases.*
- UNI 9507:1989, *Non-flammable medical gas pipeline. Terminal units.*

BSI — British Standards Institution

BSI is the independent national body responsible for preparing British Standards. It presents the UK view on standards in Europe and at the international level. It is incorporated by Royal Charter.

Revisions

British Standards are updated by amendment or revision. Users of British Standards should make sure that they possess the latest amendments or editions.

It is the constant aim of BSI to improve the quality of our products and services. We would be grateful if anyone finding an inaccuracy or ambiguity while using this British Standard would inform the Secretary of the technical committee responsible, the identity of which can be found on the inside front cover. Tel: +44 (0)20 8996 9000. Fax: +44 (0)20 8996 7400.

BSI offers members an individual updating service called PLUS which ensures that subscribers automatically receive the latest editions of standards.

Buying standards

Orders for all BSI, international and foreign standards publications should be addressed to Customer Services. Tel: +44 (0)20 8996 9001. Fax: +44 (0)20 8996 7001. Email: orders@bsi-global.com. Standards are also available from the BSI website at <http://www.bsi-global.com>.

In response to orders for international standards, it is BSI policy to supply the BSI implementation of those that have been published as British Standards, unless otherwise requested.

Information on standards

BSI provides a wide range of information on national, European and international standards through its Library and its Technical Help to Exporters Service. Various BSI electronic information services are also available which give details on all its products and services. Contact the Information Centre. Tel: +44 (0)20 8996 7111. Fax: +44 (0)20 8996 7048. Email: info@bsi-global.com.

Subscribing members of BSI are kept up to date with standards developments and receive substantial discounts on the purchase price of standards. For details of these and other benefits contact Membership Administration. Tel: +44 (0)20 8996 7002. Fax: +44 (0)20 8996 7001. Email: membership@bsi-global.com.

Information regarding online access to British Standards via British Standards Online can be found at <http://www.bsi-global.com/bsonline>.

Further information about BSI is available on the BSI website at <http://www.bsi-global.com>.

Copyright

Copyright subsists in all BSI publications. BSI also holds the copyright, in the UK, of the publications of the international standardization bodies. Except as permitted under the Copyright, Designs and Patents Act 1988 no extract may be reproduced, stored in a retrieval system or transmitted in any form or by any means – electronic, photocopying, recording or otherwise – without prior written permission from BSI.

This does not preclude the free use, in the course of implementing the standard, of necessary details such as symbols, and size, type or grade designations. If these details are to be used for any other purpose than implementation then the prior written permission of BSI must be obtained.

Details and advice can be obtained from the Copyright & Licensing Manager. Tel: +44 (0)20 8996 7070. Fax: +44 (0)20 8996 7553. Email: copyright@bsi-global.com.