

Specification for

# Interchangeability and safety of a standardized luminaire supporting coupler

ICS 29.120.30; 29.140.40

# Committees responsible for this British Standard

The preparation of this British Standard was entrusted by the Power Electrical Engineering Standards Committee (PEL/-) to Technical Committee PEL/4, upon which the following bodies were represented:

ASTA Certification Services  
 Association of Consulting Engineers  
 Association of Control Manufacturers [TACMA (BEAMA Ltd.)]  
 Association of Manufacturers of Domestic Electrical Appliances  
 British Electrical Systems Association (BEAMA Ltd.)  
 British Electrotechnical Approvals Board  
 British Plastics Federation  
 Consumer Policy Committee of BSI  
 Decorative Lighting Association  
 Department of Health and Social Security  
 Department of Trade and Industry (Consumer Safety Unit, CA Division)  
 ERA Technology Ltd.  
 Electrical Contractors' Association  
 Electrical Installation Equipment Manufacturers' Association (BEAMA Ltd.)  
 Electrical Power Engineers' Association  
 Electricity Supply Industry in England and Wales  
 Institution of Electrical Engineers  
 Lighting Industry Federation Ltd.  
 National Inspection Council for Electrical Installation Contracting

This British Standard, having been prepared under the direction of the Power Electrical Engineering Standards Committee, was published under the authority of the Board of BSI and comes into effect on 30 June 1988

© BSI 04-1999

The following BSI references relate to the work on this standard:  
 Committee reference PEL/4  
 Draft for comment 86/24102 DC

## Amendments issued since publication

Amd. No.	Date of issue	Comments
7625	June 1993	
9295	December 1996	
9764	May 1998	Indicated by a sideline in the margin

ISBN 0 580 16603 1

# Contents

	Page
Committees responsible	Inside front cover
Foreword	ii
<hr/>	
1 Scope	1
2 General and particular requirements	1
3 Rated current	1
4 Load supporting capacities	1
5 Dimensions	1
6 Marking	1
<hr/>	
Figure 1 — LCS plug interface detail	2
Figure 2 — Integral LSC plug and component LSC plug	3
Figure 3 — Maximum permissible profile for terminal housing and cord restraint for independent LSC plug	4
Figure 4 — LSC outlet interface detail	5
Figure 5 — LSC outlet for wall mounting	6
Figure 6 — LSC outlet for ceiling mounting	7
Figure 7 — LSC outlet for ceiling mounting. Cover fixing details and minimum space for independent LSC plug	8
Figure 8 — LSC outlet wall mounting box	9
Figure 9 — Panel mounted 4 pin LSC socket	10
Figure 10 — 4 pin socket LSC outlet for ceiling mounting	11
Figure 11 — 4 pin socket LSC outlet for 1 gang flushplate	12
Figure 12 — 4 pin LSC plug interface detail	13
Figure 13 — 4 pin integral LSC plug and component LSC plug	14
Figure 14 — 4 pin LSC outlet interface detail	15
Figure 15 — 4 pin socket LSC outlet	16
<hr/>	
Publications referred to	Inside back cover
<hr/>	

## Foreword

This British Standard has been prepared under the direction of the Power Electrical Engineering Standards Committee.

The growing use of luminaire supporting couplers in place of ceiling roses led to a request for standards to ensure the safety and interchangeability of such accessories. This standard has been based on drafts submitted by the Decorative Lighting Association and the Electrical Installation Equipment Manufacturers' Association, and gives requirements for the interchangeability and safety of a standardized luminaire supporting coupler. The general requirements are specified in a separate standard, BS 6972.

A British Standard does not purport to include all the necessary provisions of a contract. Users of British Standards are responsible for their correct application.

**Compliance with a British Standard does not of itself confer immunity from legal obligations.**

### Summary of pages

This document comprises a front cover, an inside front cover, pages i and ii, pages 1 to 16, an inside back cover and a back cover.

This standard has been updated (see copyright date) and may have had amendments incorporated. This will be indicated in the amendment table on the inside front cover.

## 1 Scope

This British Standard specifies dimensions and particular requirements for the interchangeability and safety of a standardized luminaire supporting coupler (LSC) comprising an LSC plug and an LSC outlet.

NOTE The titles of the publications referred to in this standard are listed on the inside back cover.

## 2 General and particular requirements

LSC plugs and LSC outlets as referred to in this standard shall be capable of complying with all the relevant requirements specified in BS 6972 except that the rated current shall be as specified in clause 3 and the load supporting capacity shall be as specified in clause 4. The dimensions shall be as specified in clause 5. Marking shall be as specified in clause 6.

## 3 Rated current

LSC outlets and rewirable independent LSC plugs and component LSC plugs shall have a rated current of 6 A. Integral LSC plugs shall have a rated current not less than the maximum current of the luminaire, or 1 A, whichever is the greater. Non-rewirable independent plugs shall have a rated current appropriate to the flexible cord fitted by the manufacturer (see also clause 6 of BS 6972:1988).

## 4 Load supporting capacities

LSC outlets and LSC plugs, when assembled together, shall be capable of sustaining the load of luminaires as follows:

- a) by flexible cord: 5 kg;
- b) by direct support from a horizontal surface: 5 kg;
- c) by direct support from a vertical surface: a load of 2.5 kg producing a turning moment of 1.5 N m.

4.1 Compliance shall be checked by inspection and by one of the tests described in 22.6, 22.7 or 22.8 of BS 6972:1988.

## 5 Dimensions

Luminaire supporting couplers shall have the dimensions shown in Figure 1 to Figure 15 inclusive.

5.1 Compliance shall be checked by measurement (see also clause 9 of BS 6972:1988).

## 6 Marking

Marking shall be as specified in clause 8 of BS 6972:1988, except that instead of the marking specified in 8.1 b) and 8.2 b) of BS 6972:1988, the number of this British Standard, i.e. BS 7001<sup>1)</sup>, shall be marked.

<sup>1)</sup> Marking BS 7001 on or in relation to a product represents a manufacturer's declaration of conformity, i.e. a claim by or on behalf of the manufacturer that the product meets the requirements of the standard. The accuracy of the claim is therefore solely the responsibility of the person making the claim. Such a declaration is not to be confused with third party certification of conformity, which may also be desirable.

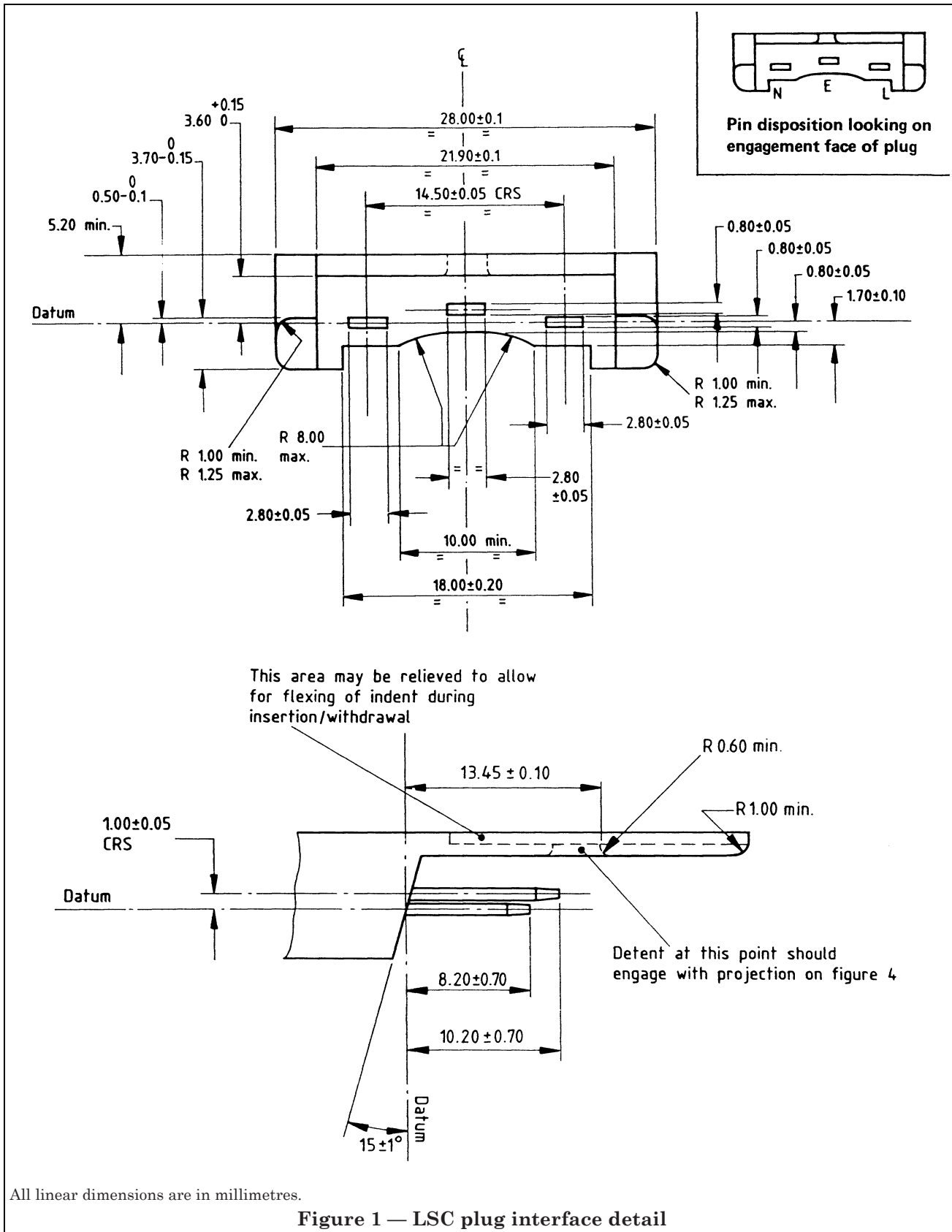
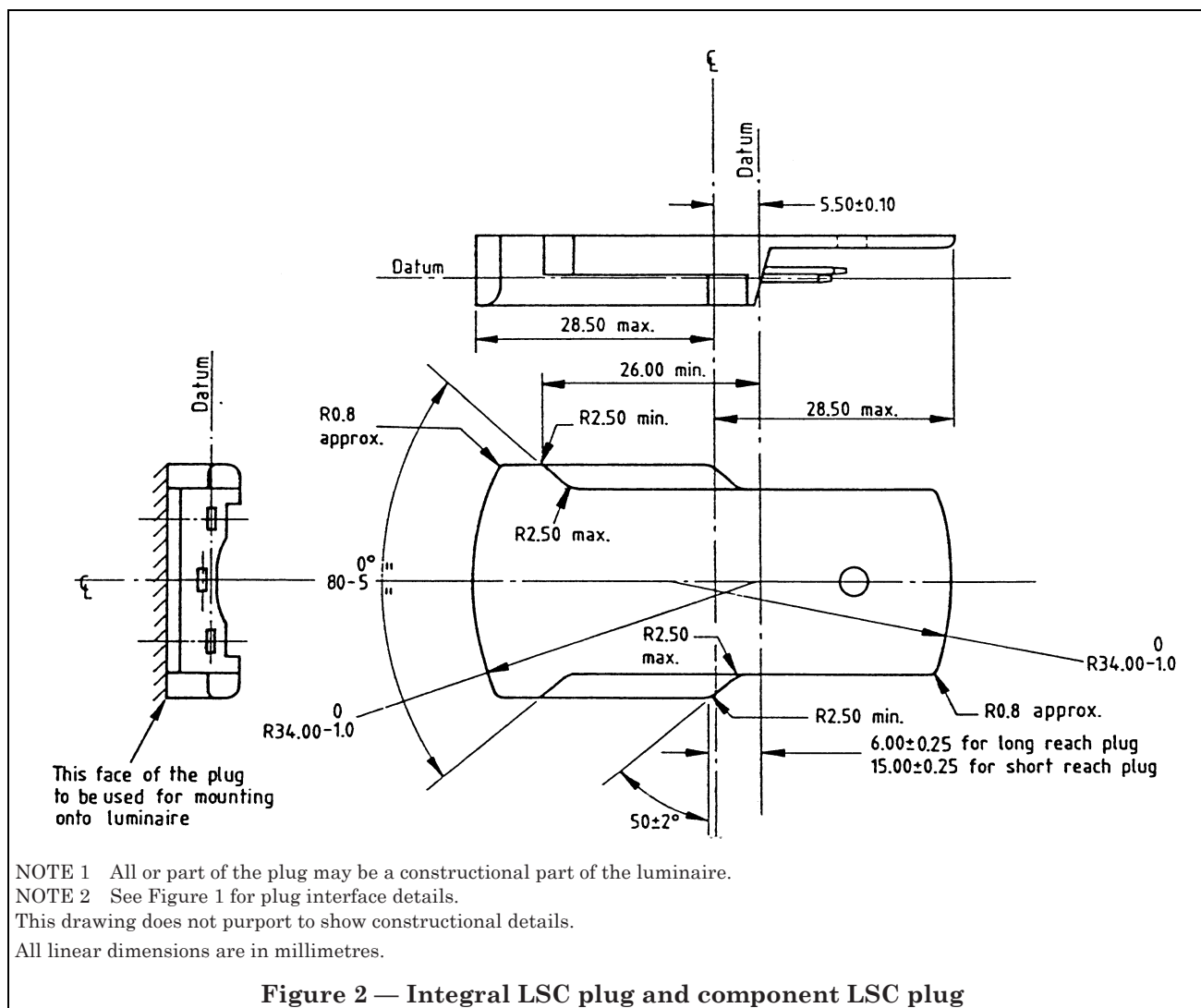
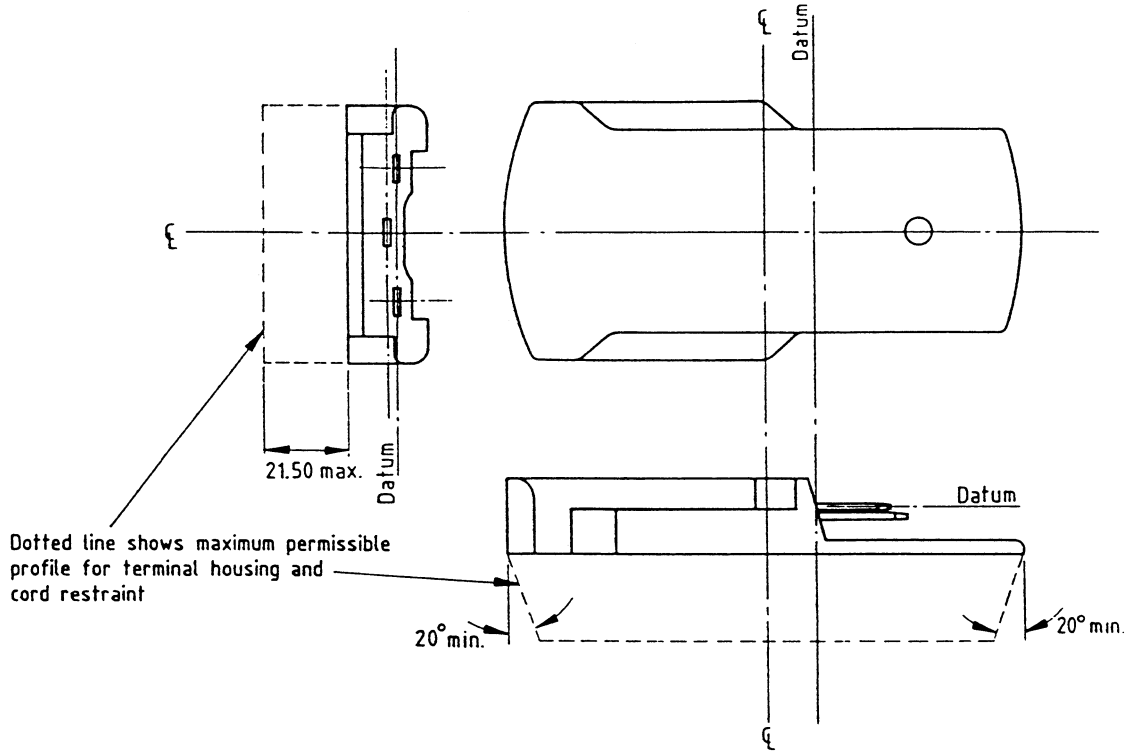


Figure 1 — LSC plug interface detail



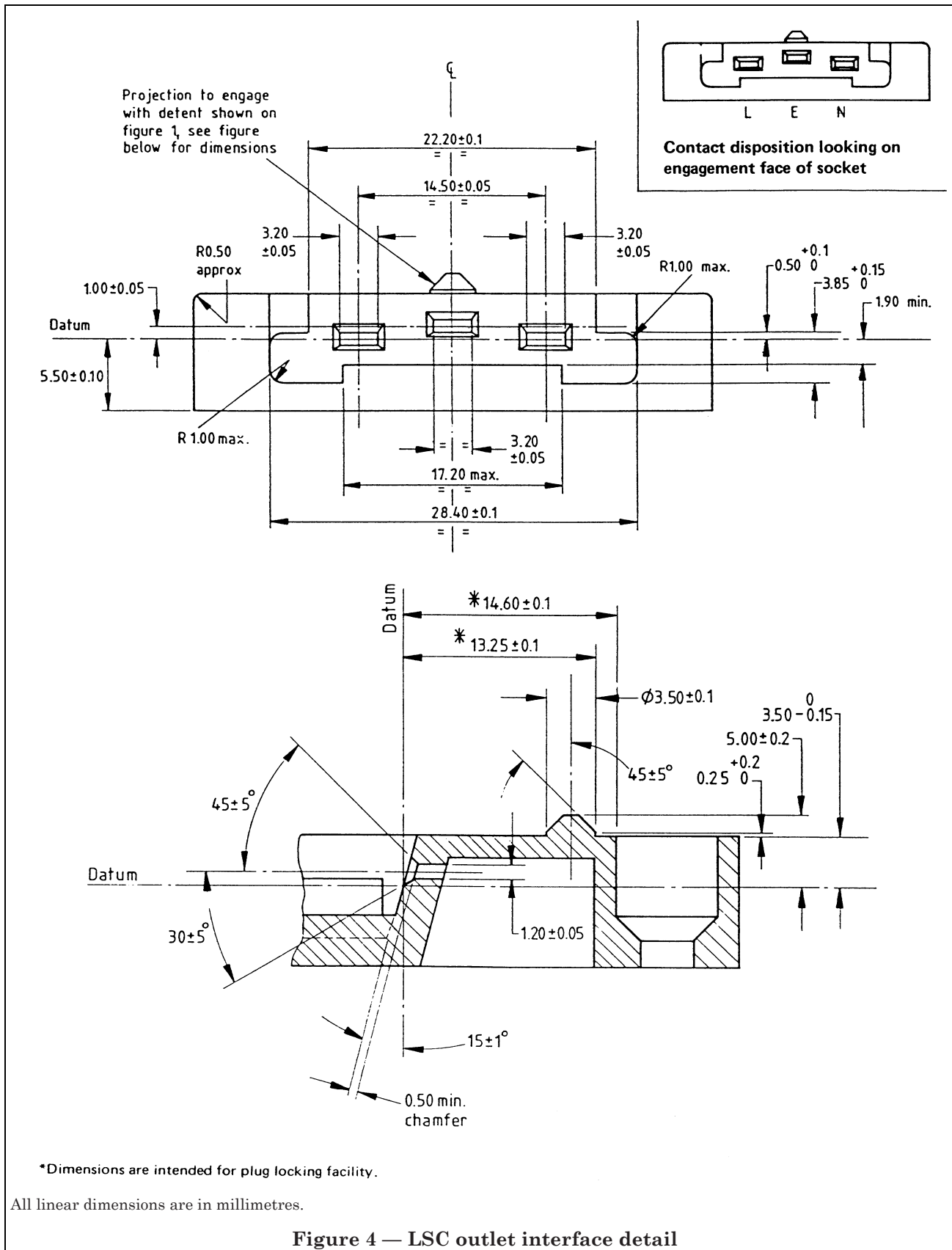


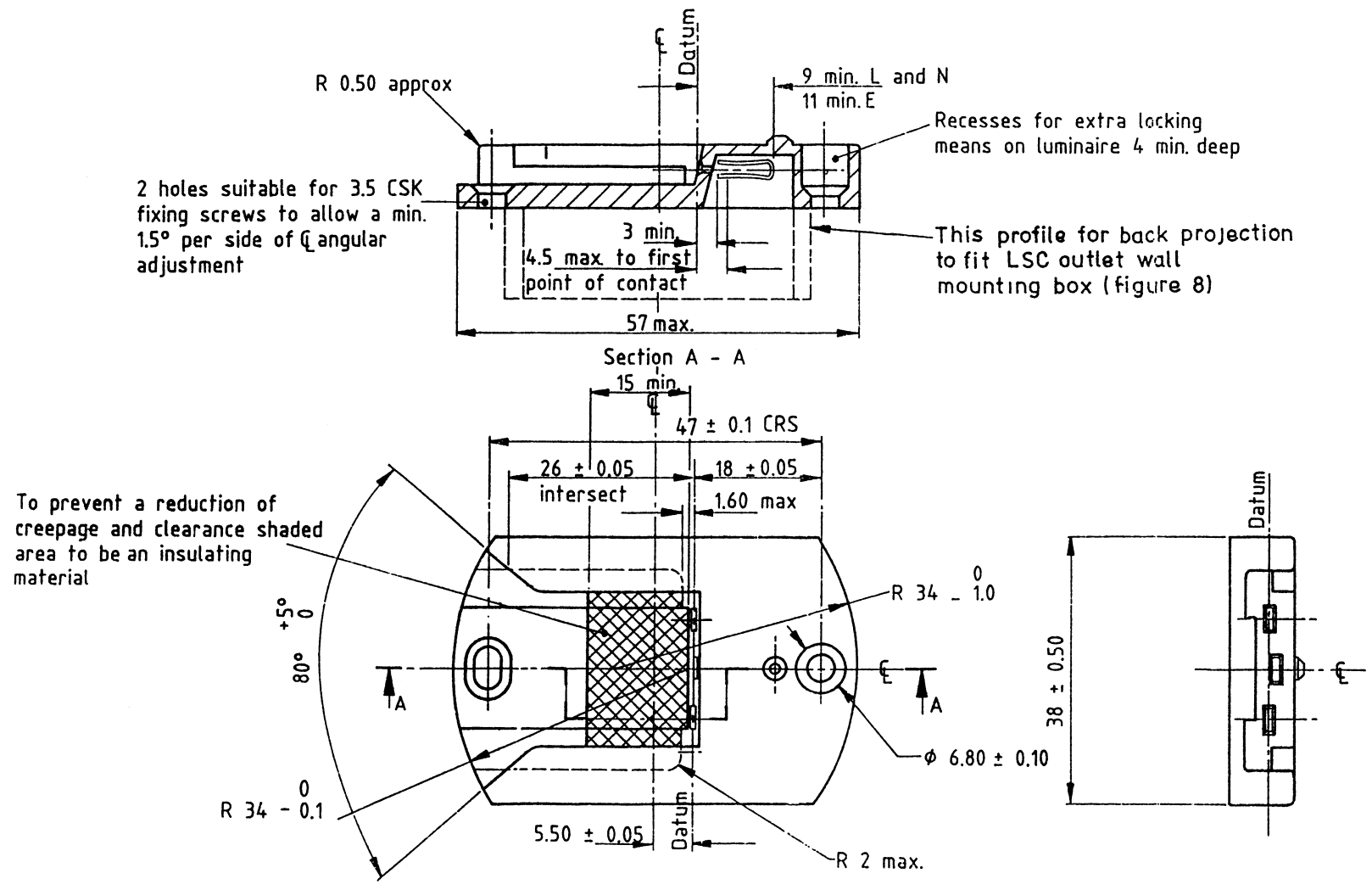
Dotted line shows maximum permissible profile for terminal housing and cord restraint

NOTE See Figure 1 for plug interface details.  
 See Figure 2 for plug profile details.  
 This drawing does not purport to show constructional details.  
 Linear dimension is in millimetres.

**Figure 3 — Maximum permissible profile for terminal housing and cord restraint for independent LSC plug**

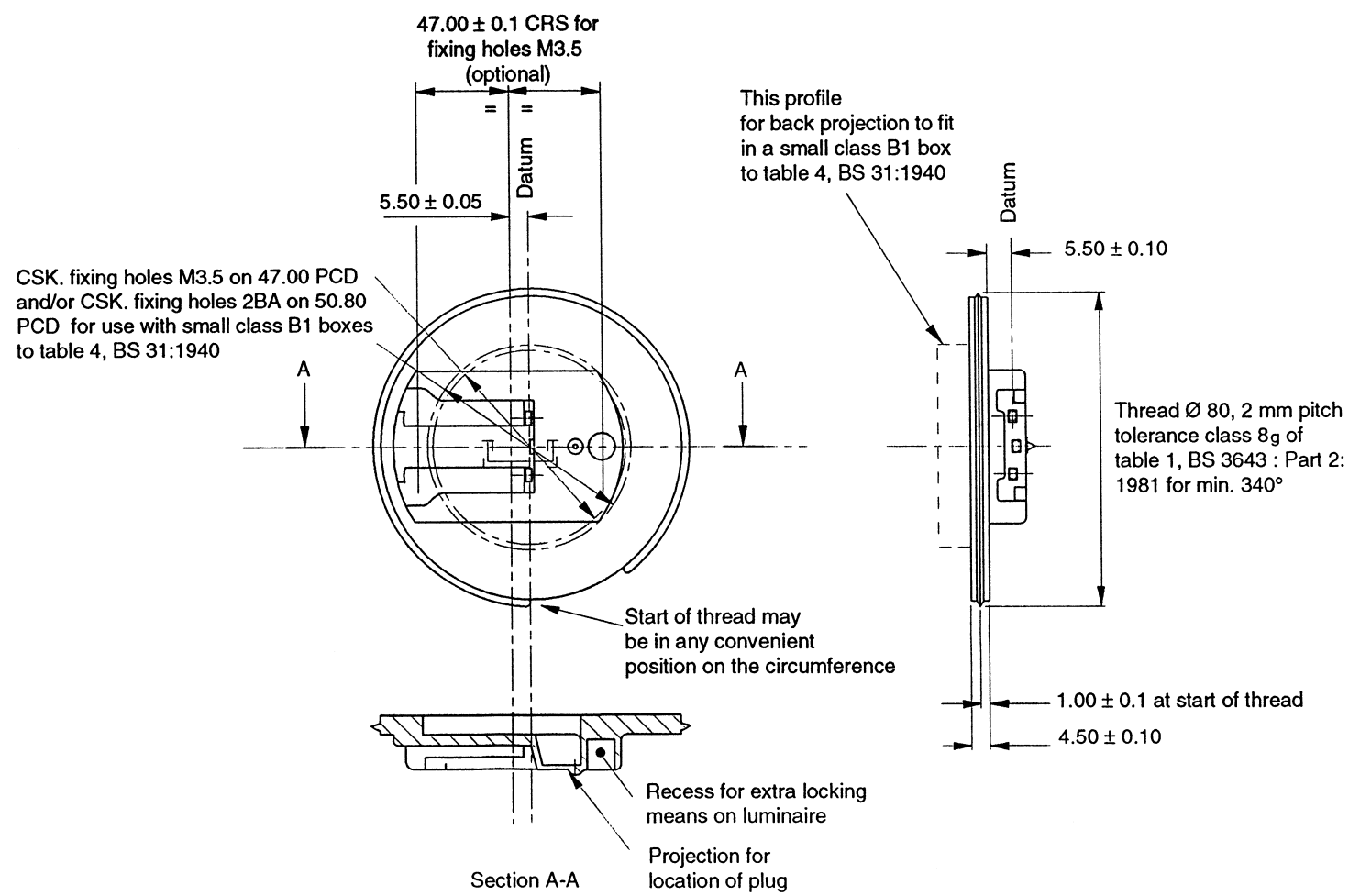






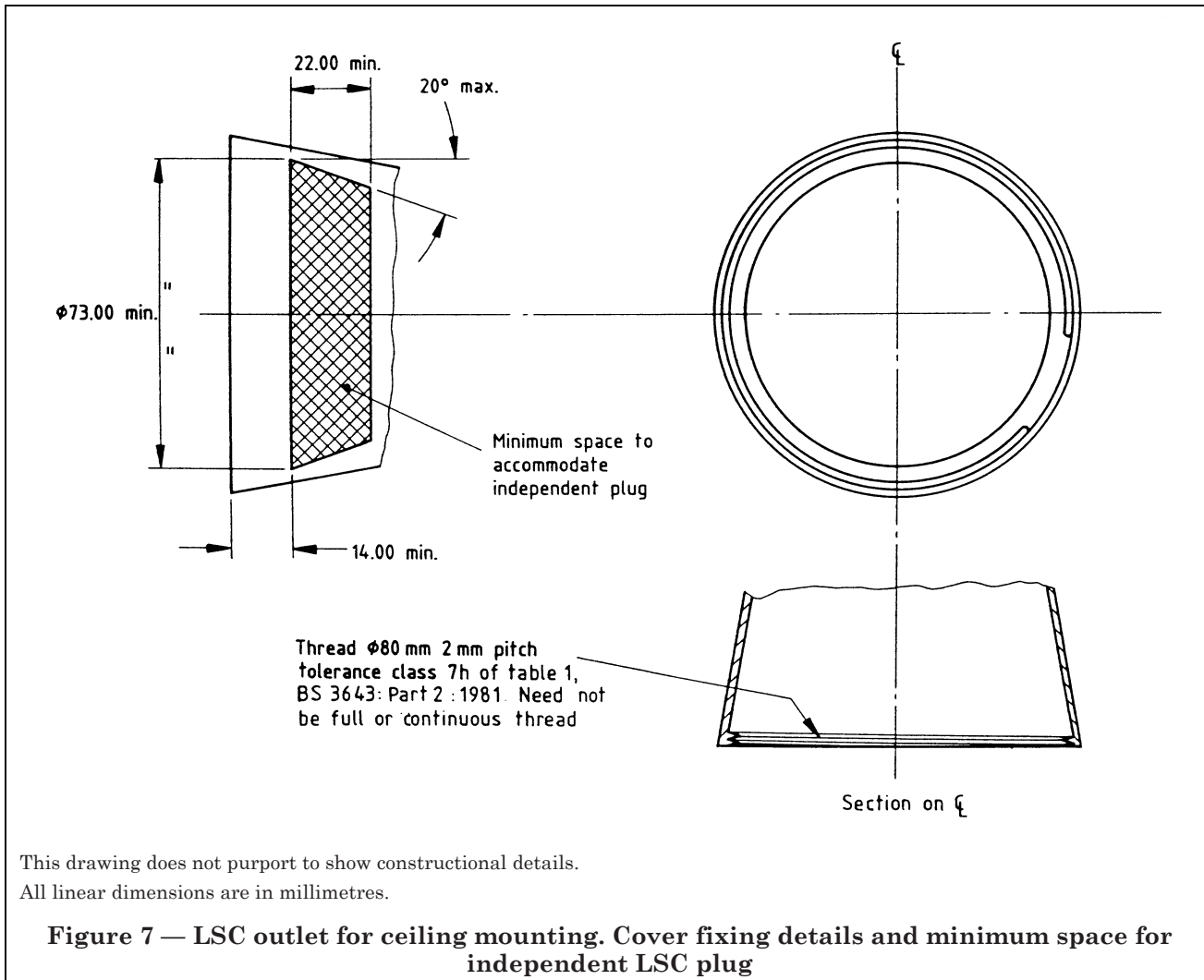
NOTE See Figure 4 for outlet interface details.  
This drawing does not purport to show constructional details.  
All linear dimensions are in millimetres.

**Figure 5 — LSC outlet for wall mounting**



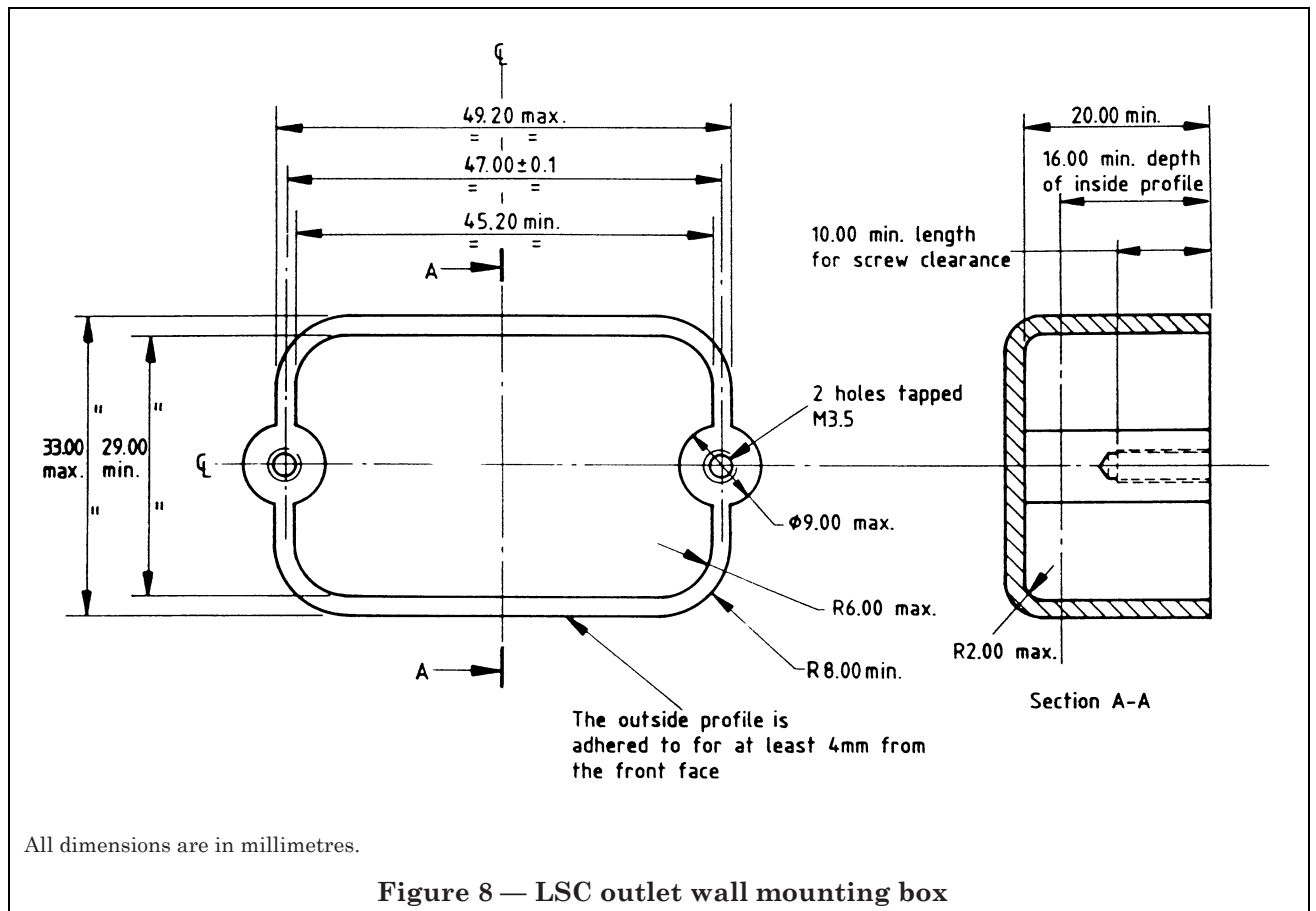
NOTE See Figure 4 for interface detail for outlet.  
 For front protrusion dimensions see Figure 5.  
 This drawing does not purport to show constructional details.  
 All linear dimensions are in millimetres.

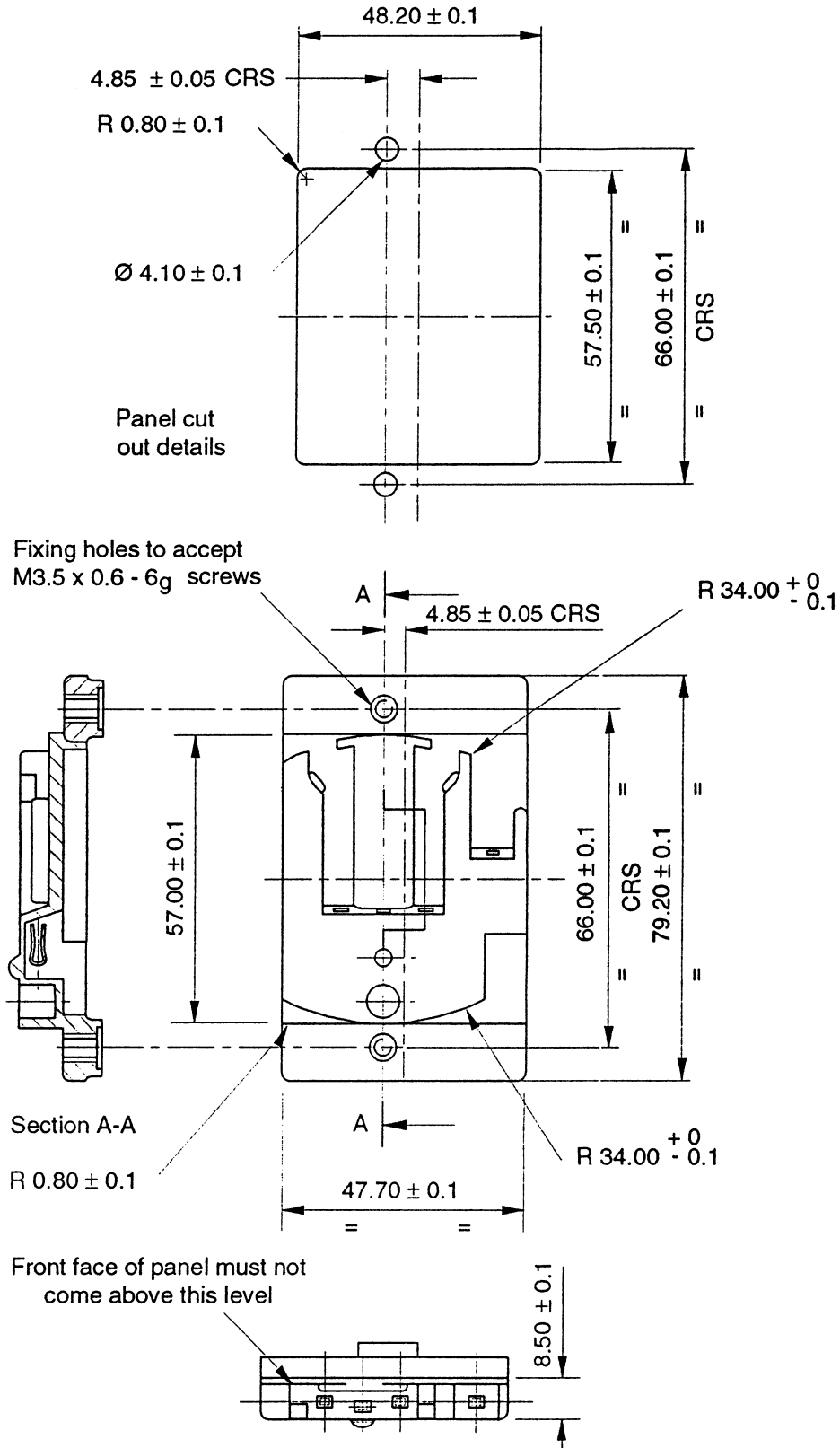
**Figure 6 — LSC outlet for ceiling mounting**



This drawing does not purport to show constructional details.  
 All linear dimensions are in millimetres.

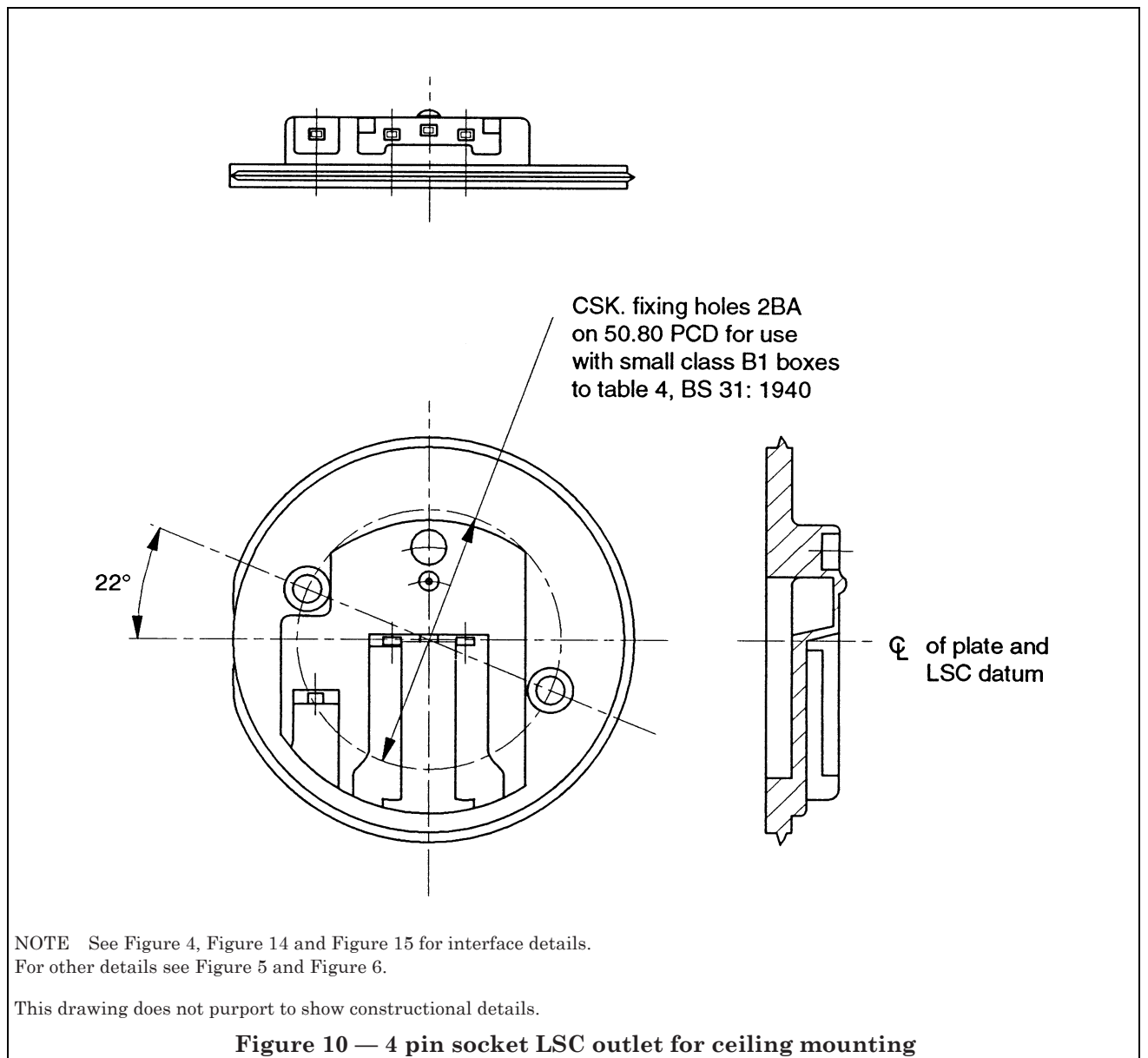
**Figure 7 — LSC outlet for ceiling mounting. Cover fixing details and minimum space for independent LSC plug**

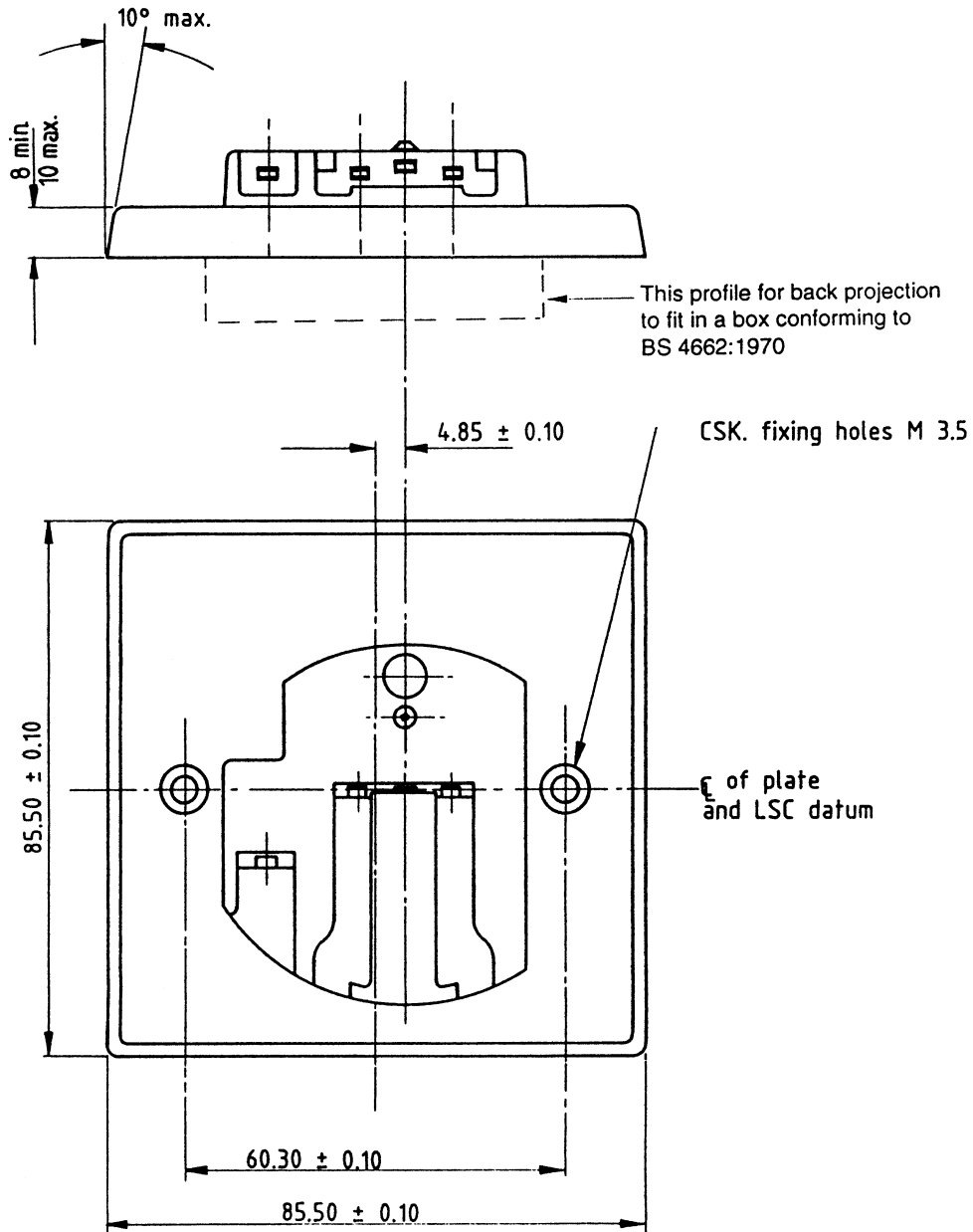




NOTE See Figure 4, Figure 14 and Figure 15 for interface details (wall mounting box not applicable).  
 For other details see Figure 5.  
 This drawing does not purport to show constructional details.  
 All dimensions are in millimetres.

Figure 9 — Panel mounted 4 pin LSC socket





NOTE See Figure 4, Figure 14 and Figure 15 for interface details.  
For other details see Figure 5.  
This drawing does not purport to show constructional details.

All linear dimensions are in millimetres.

**Figure 11 — 4 pin socket LSC outlet for 1 gang flushplate**



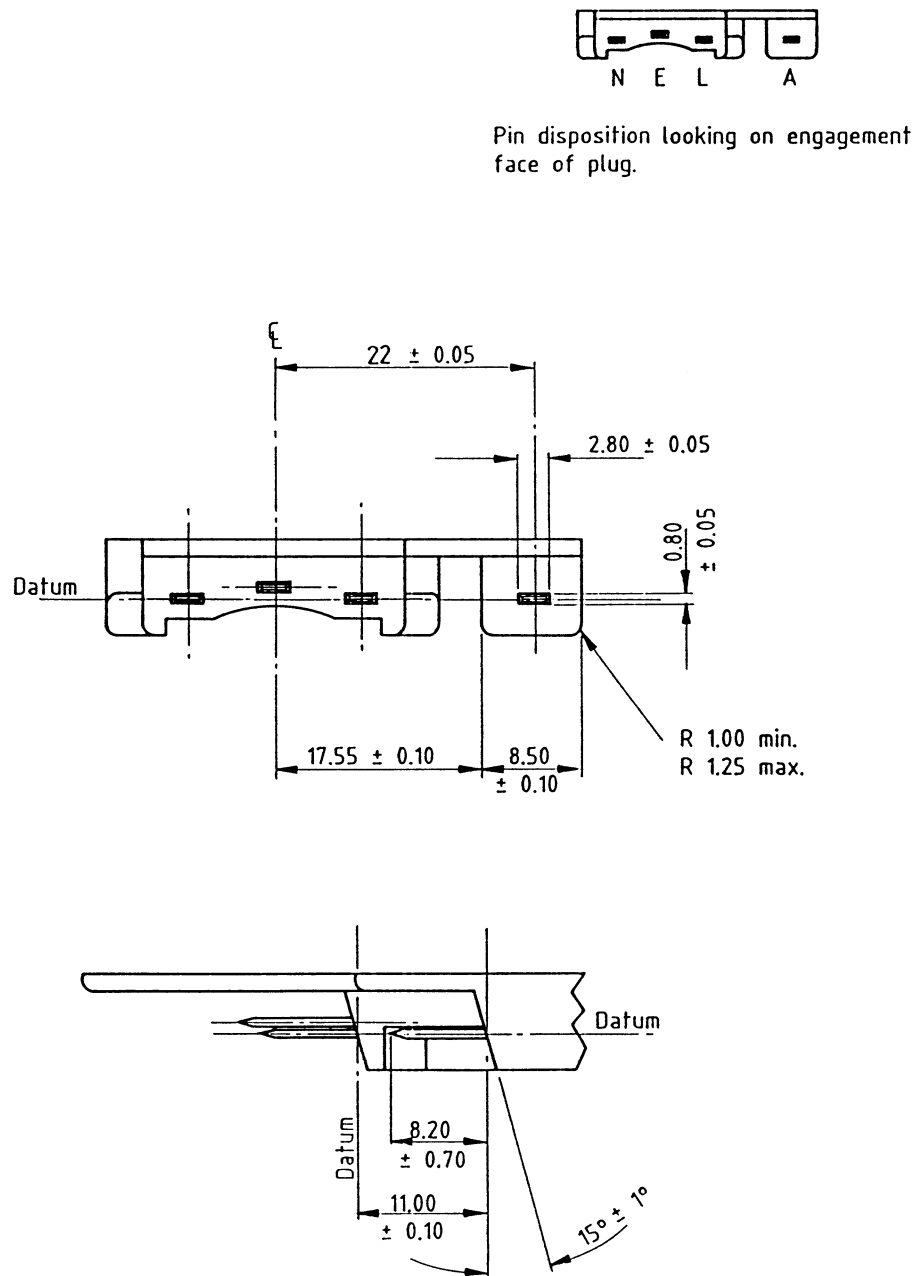


Figure 12 — 4 pin LSC plug interface detail

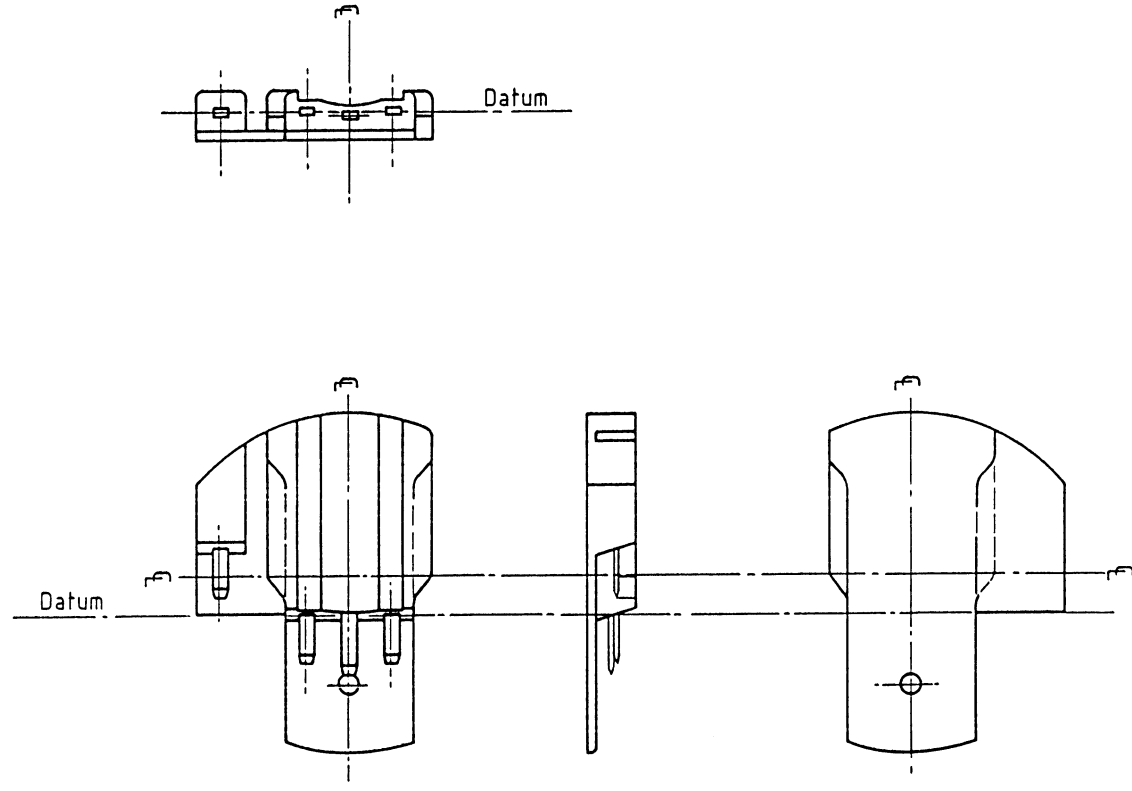
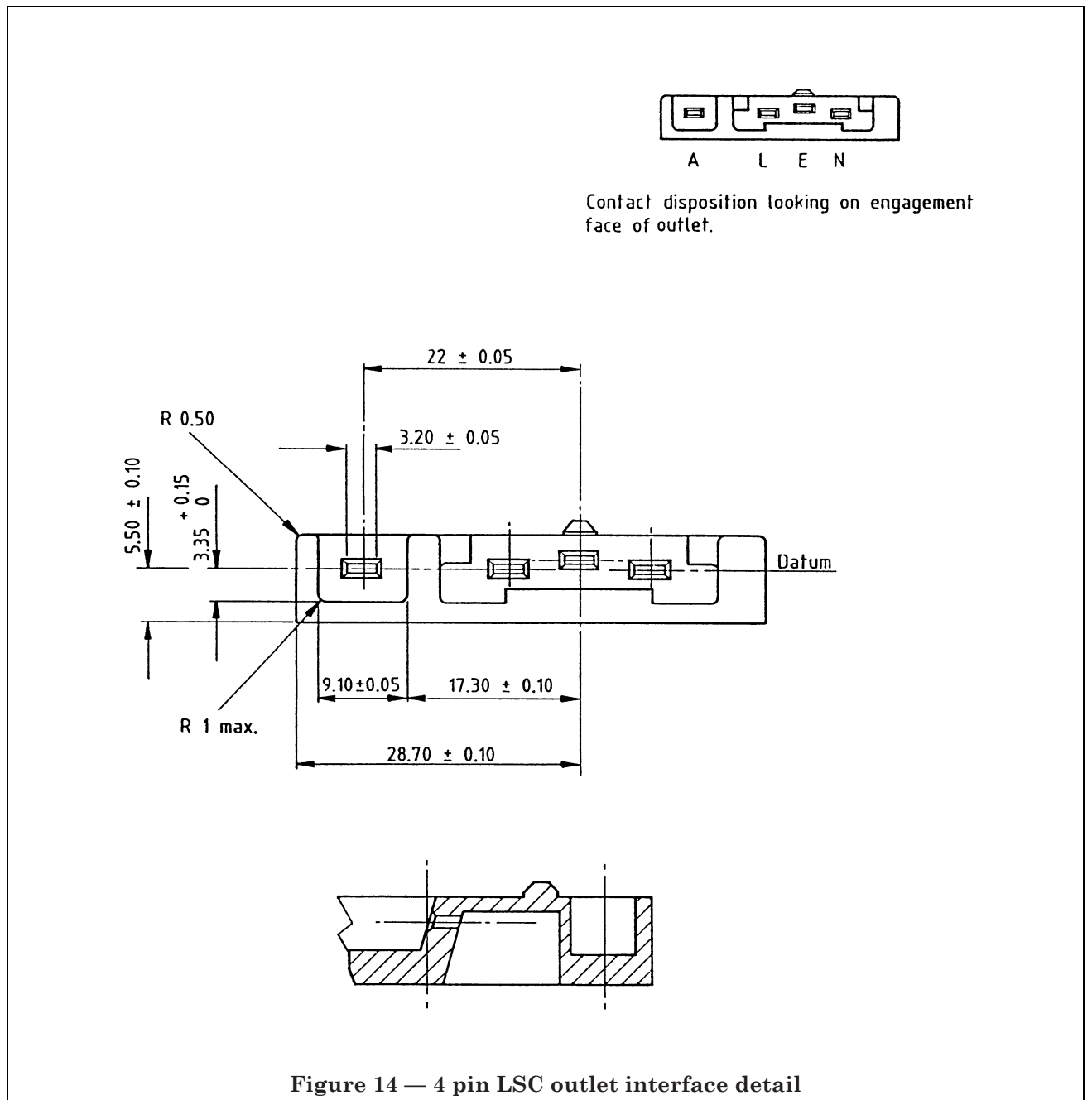
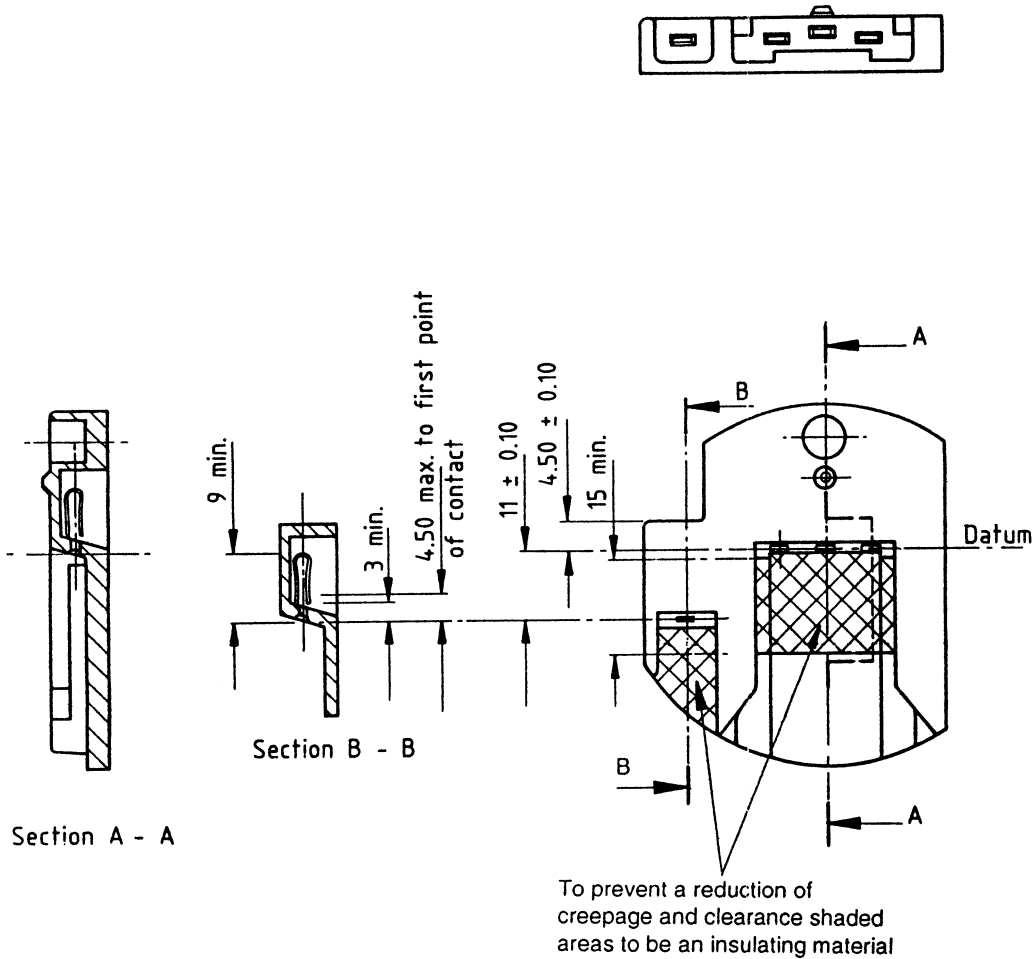


Figure 13 — 4 pin integral LSC plug and component LSC plug





NOTE See Figure 4 and Figure 14 for remaining interface details.  
 For other details see Figure 5.  
 This drawing does not purport to show constructional details

All dimensions are in millimetres.

Figure 15 — 4 pin socket LSC outlet

---

## Publications referred to

BS 31, *Steel conduit and fittings for electrical wiring.*

BS 3643, *ISO metric screw threads.*

BS 3643-2, *Specification for selected limits of size.*

BS 6972, *Specification for general requirements for luminaire supporting couplers for domestic, light industrial and commercial use.*

---

---

# BSI — British Standards Institution

BSI is the independent national body responsible for preparing British Standards. It presents the UK view on standards in Europe and at the international level. It is incorporated by Royal Charter.

## Revisions

British Standards are updated by amendment or revision. Users of British Standards should make sure that they possess the latest amendments or editions.

It is the constant aim of BSI to improve the quality of our products and services. We would be grateful if anyone finding an inaccuracy or ambiguity while using this British Standard would inform the Secretary of the technical committee responsible, the identity of which can be found on the inside front cover. Tel: 020 8996 9000. Fax: 020 8996 7400.

BSI offers members an individual updating service called PLUS which ensures that subscribers automatically receive the latest editions of standards.

## Buying standards

Orders for all BSI, international and foreign standards publications should be addressed to Customer Services. Tel: 020 8996 9001. Fax: 020 8996 7001.

In response to orders for international standards, it is BSI policy to supply the BSI implementation of those that have been published as British Standards, unless otherwise requested.

## Information on standards

BSI provides a wide range of information on national, European and international standards through its Library and its Technical Help to Exporters Service. Various BSI electronic information services are also available which give details on all its products and services. Contact the Information Centre. Tel: 020 8996 7111. Fax: 020 8996 7048.

Subscribing members of BSI are kept up to date with standards developments and receive substantial discounts on the purchase price of standards. For details of these and other benefits contact Membership Administration. Tel: 020 8996 7002. Fax: 020 8996 7001.

## Copyright

Copyright subsists in all BSI publications. BSI also holds the copyright, in the UK, of the publications of the international standardization bodies. Except as permitted under the Copyright, Designs and Patents Act 1988 no extract may be reproduced, stored in a retrieval system or transmitted in any form or by any means – electronic, photocopying, recording or otherwise – without prior written permission from BSI.

This does not preclude the free use, in the course of implementing the standard, of necessary details such as symbols, and size, type or grade designations. If these details are to be used for any other purpose than implementation then the prior written permission of BSI must be obtained.

If permission is granted, the terms may include royalty payments or a licensing agreement. Details and advice can be obtained from the Copyright Manager. Tel: 020 8996 7070.