



BS 4062 : Part 2 : 1990

ISO 6403 : 1988

(Corrected and reprinted May 1989)

UDC 621.646.2/.4 : 621.22 : 532.57.08 : 620.1

© British Standards Institution. No part of this publication may be photocopied or otherwise reproduced without the prior permission in writing of BSI

British Standard

Valves for hydraulic fluid power systems

Part 2. Methods for determining performance

Distributeurs pour transmissions hydrauliques

Partie 2. Méthodes de détermination des caractéristiques de fonctionnement

Ventile für fluidtechnische Systeme

Teil 2. Verfahren zur Bestimmung der Leistung

Contents

	Page		Page
National foreword	1	3 Transient characteristics for operation of directional control valves — Relationship between displacement and time	15
Committees responsible	Back cover	4 Transient characteristics for operation of directional control valves — Relationship between pressure and time	15
Method			
0 Introduction	2	5 Test circuit for direct-acting non-return valves	16
1 Scope and field of application	2	6 Test circuit for leakage flow of direct-acting non-return valves	16
2 References	2	7 Test circuit for pilot-pressure-operated non-return valves	17
3 Definitions	2	8 Test circuit for pressure-relief valves	18
4 Symbols and units	3	9 Test circuit for pressure-reducing valves	19
5 Test installation — General requirements	3	10 Test circuit for flow control valves (meter-in and three-way bleed-off)	20
6 General test conditions	3	11 Test circuit for flow control valves (meter-out)	21
7 Test procedure for directional control valves	5	12 Test circuit for flow control valves (bleed-off)	22
8 Test procedure for non-return (check) valves	6	13 Test circuit for flow-dividing valves	23
9 Test procedure for valves controlling pressure	7	14 Graphical representation of pressure/flow characteristics of pilot-pressure-operated non-return valves	24
10 Test procedure for flow control valves	8	15 Graphical representation of pilot pressures p_x permitting flow from port B to port A	24
11 Test procedure for flow-dividing valves	9	16 Graphical representation of steady-state pressure/flow characteristics for pressure-relief valves	25
12 Test report	10	17 Graphical representation of transient response of valve controlling pressure	26
13 Identification statement	12	18 Graphical representation of steady-state flow characteristics of a flow control valve	27
Annexes			
A Classes of measurement accuracy	29	19 Graphical representation of transient response of flow control valves	28
B Use for practical units	30		
Tables			
1 Symbols and units	3		
2 Limits of permissible variation of mean indicated values of controlled parameters	4		
3 Output pressure conditions	9		
4 Permissible systematic errors of measuring instruments as determined during calibration	29		
5 Practical units	30		
Figures			
1 Test circuit for directional control valves	13		
2 Switching envelope for directional control valves	14		

National foreword

This revised British Standard, prepared under the direction of the Machinery and Components Standards Policy Committee, concerns the testing of valves used in hydraulic fluid power systems and supersedes BS 4062 : 1982, which is withdrawn.

This Part of BS 4062 describes methods for determining the performance of valves under steady-state and dynamic conditions; they are identical with the methods described in ISO 6403 : 1988 'Hydraulic fluid power — Valves controlling flow and pressure — Test methods', published by the International Organization for Standardization (ISO). The standard is published in two Parts, Part 1 of which describes a method for determining the pressure differential/flow characteristics of valves under steady-state conditions.

Three classes of measurement accuracy, A, B and C are associated with the tests and are related in appendix A. The class of measurement accuracy should be agreed between manufacturer and user. The methods of measurement used for testing the majority of valves will be those included in class C, those in class B may be employed where a higher degree of accuracy is required. Class A methods of measurement will necessitate laboratory conditions, and may be employed exceptionally on tests where the attainment of high accuracy is held to justify the greatly increased time and cost expended.

It is intended that the standard will unify testing methods and enable the performance of different types of valve to be more readily compared.

This revised edition of ISO 6403 : 1988 corrects inaccuracies in 9.3 of the first edition and also incorporates other improvements.

Cross-references

International standard	Corresponding British Standard
ISO 1219 : 1976	BS 2917 : 1977 Specification for graphical symbols used on diagrams for fluid power systems and components (Identical)
ISO 4411 : 1986	BS 4062 Valves for hydraulic fluid power systems Part 1 : 1982 Methods for determining pressure differential/flow characteristics (Identical)
IEC Publication 85 (1984)	BS 2757 : 1986 Method for determining the thermal classification of electrical insulation (Identical)

The Technical Committee has reviewed the provisions of ISO 5598, to which reference is made in the text, and has decided that they are acceptable for use in conjunction with this standard.

Additional information. For the purposes of this British Standard, the identification statement in clause 13 should be read as follows:

'Tests for determining steady-state and dynamic performance conform to the appropriate methods described in BS 4062 : Part 2 : 1989.'

Compliance with a British Standard does not of itself confer immunity from legal obligations.

Hydraulic fluid power – Valves controlling flow and pressure – Test methods

0 Introduction

In hydraulic fluid power systems, power is transmitted and controlled through a liquid under pressure within an enclosed circuit. Hydraulic valves may be used to control the direction, pressure or flow rate of the working fluid by adjusting or controlling their resistance to flow.

ISO 4411, in which methods for determining the steady-state differential pressure/flow characteristics of hydraulic valves are specified, forms part of the same series of International Standards.

The test requirements for production purposes may differ from those specified in this International Standard.

1 Scope and field of application

This International Standard specifies methods for testing hydraulic valves which are used for the control of flow or pressure in a circuit in order to determine their steady-state and dynamic performance.

Requirements for test installations and procedures, measurements and presentation of results are specified. This International Standard does not establish limits of performance since the suitability of the valve for its intended purpose should be agreed between the manufacturer and the user.

Accuracy of measurement is divided into three classes (A, B and C) which are explained in annex A. Guidance as to the use of practical units for the presentation of results is given in annex B.

Proportional control valves are not dealt with in this International Standard. Electrohydraulic servovalves are dealt with in ISO 6404.

2 References

ISO 1219, *Fluid power systems and components – Graphic symbols*.

ISO 4411, *Hydraulic fluid power – Valves – Determination of pressure differential/flow characteristics*.

ISO 5598, *Fluid power systems and components – Vocabulary*.

IEC Publication 85, *Thermal evaluation and classification of electrical insulation*.

3 Definitions

For the purposes of this International Standard, the definitions given in ISO 5598, together with the following, apply.

3.1 bleed-off: A circuit condition where there is control over the inlet flow to a component by diverting part of that flow to a reservoir or part of a circuit having lower pressure.

3.2 meter-in: A circuit condition where there is control over the inlet flow to a component.

3.3 meter-out: A circuit condition where there is control over the outlet flow from a component.

3.4 volumetric stiffness: The stiffness of a given portion of a hydraulic circuit, which is determined by the value of the partial differential $\frac{\partial p}{\partial V}$ for the fluid contained in that part of the circuit.

4 Symbols and units

4.1 The units and symbols used throughout this International Standard are as shown in table 1.

Table 1 — Symbols and units

Quantity	Symbol	Dimension ¹⁾	SI unit ²⁾
Nominal diameter of valve	D	L	m
Force	F	MLT ⁻²	N
Control element — linear displacement	L	L	m
Control element — angular displacement	β	—	rad
Volume flow rate	q_V	L ³ T ⁻¹	m ³ /s
Internal diameter of pipe	d	L	m
Pressure, differential pressure	$p, \Delta p$	ML ⁻¹ T ⁻²	Pa
Time	t	T	s
Mass density of fluid	ρ	ML ⁻³	kg/m ³
Kinematic viscosity	ν	L ² T ⁻¹	m ² /s
Temperature (customary)	θ	⊙	°C
Isentropic bulk modulus	K_s	ML ⁻¹ T ⁻²	Pa
Volume	V	L ³	m ³

1) M = mass; L = length; T = time; ⊙ = temperature

2) The practical units which may be used for the presentation of results are tabulated in annex B.

4.2 The graphical symbols used in the figures depicting test circuits are in accordance with ISO 1219.

5 Test installation — General requirements

5.1 Test circuit

5.1.1 A test circuit similar to those shown in figure 1 and figures 5 to 13 and suitable for the type of valve being tested in accordance with the relevant clauses in this International Standard shall be used.

NOTES

1 Although figure 1 and figures 5 to 13 illustrate basic circuits which are specific to one or more tests and which utilize the minimum number of components, it is acceptable to use an integrated test circuit which embraces two or more test conditions.

2 The figures in this International Standard showing basic test circuits do not incorporate all the safety devices necessary to protect against damage in the event of component failure. It is important that those responsible for conducting these tests give due consideration to safeguarding both personnel and equipment.

5.1.2 A fluid supply with a controllable flow which has a higher maximum than the rated flow of the valve being tested shall be used.

5.1.3 A pressure control valve in the supply line shall be installed to protect the circuit from excess pressure.

Further control valves, as necessary, shall be installed to regulate the flow or pressure, as required, in various parts of the circuit.

5.1.4 The inside diameters of pipes and fittings that interface with the test valve, and which include pressure tapping points, shall be consistent with the diameters of the ports.

5.1.5 Drain ports shall be connected to a reservoir.

5.2 Pressure- and temperature-sensing points

5.2.1 Location of pressure tappings

NOTE — In the case of measurements to class C standard of accuracy (see annex A), pressure readings taken for expediency at other points other than those described in this sub-sub-clause will give sufficient accuracy providing that, where appropriate, correction is made for pipe losses.

Pressure tappings shall be provided both upstream and downstream of the valve being tested and, if required, at other points.

5.2.1.1 The inlet pressure tapping point shall be

- a) not less than $10d$ downstream of any perturbation-producing element, such as a valve or a bend, and
- b) not less than $5d$ upstream of the test valve.

5.2.1.2 The outlet pressure tapping point shall be not less than $10d$ downstream of the test valve.

5.2.1.3 The measured data for pipe losses shall be corrected using the method described in ISO 4411.

5.2.2 Pressure tappings

5.2.2.1 The tappings shall have diameters equal to or less than $0,1d$ but not less than 1 mm nor greater than 6 mm.

5.2.2.2 The internal pipe surface at the tapping shall be deburred without the sharp edge of the tapping hole being removed.

5.2.2.3 The length of the tapping hole shall be not less than twice the diameter.

5.2.2.4 The bore of the pipe containing the tapping shall be clean and smooth.

5.2.2.5 The instrument-connecting pipes shall have bores not less than 3 mm.

5.2.2.6 Any entrained air between each tapping point and the measuring instrument shall be purged.

5.2.3 Location of temperature-sensing point

The fluid temperature at the inlet to the test valve shall be measured at a distance not greater than $15d$ upstream of the inlet pressure tapping.

5.3 Filtration and contamination level

5.3.1 Filters shall be installed which provide a standard of filtration which is at least equal to that recommended by the test valve manufacturer.

5.3.2 The position and specific description of each filter used in the test circuit shall be stated in the test report.

5.3.3 During tests conducted in accordance with clauses 7 to 11, where inconsistencies may arise due to silting, the standard of filtration shall be such that test measurements can be made within 60 s; the actual interval in the test report shall be stated in the test report.

5.3.4 The actual contamination level of the test fluid from samples taken during the test shall be determined; the test method used shall be stated in the test report.

6 General test conditions

6.1 Test fluid

6.1.1 The following information relating to the test fluid shall be included in the test report:

- a) a description of test fluid;
- b) the kinematic viscosity, ν , and density, ρ , of the test fluid at the controlled temperature of the test;
- c) the isentropic bulk modulus, K_s , of the test fluid (if dynamic tests are performed).

6.1.2 If it is necessary to determine the effect of viscosity, the tests shall be carried out at agreed fixed temperature(s), using fluids of different viscosity of the same fundamental type; details shall be included in the test report.

6.2 Test temperatures

6.2.1 Tests shall be carried out at agreed fluid inlet temperatures. The fluid inlet temperature(s) shall be selected within the range recommended by the valve manufacturer; details shall be included in the test report.

6.2.2 When selecting temperatures, due consideration shall be given to whether the valve to be tested is to be examined for temperature compensation.

6.2.3 If the selected test temperature is 25 °C or higher, the equipment and the working fluid shall be stabilized at that temperature prior to commencement of the test. The temperature shall be maintained throughout the test.

6.2.4 If the selected test temperature is less than 25 °C (considered as a cold-start condition), the temperature of the fluid shall be allowed to rise after the start of the test. Temperature, pressure and flows against time shall be recorded.

6.3 Steady-state conditions

6.3.1 Each set of measurements shall be taken when the values of controlled parameters are within the tolerances given in table 2.

6.3.2 The number of readings taken and their disposition over the range shall be selected so as to give a representative indication of the performance of the unit over the full range of the function being varied.

6.3.3 In order to ensure repeatable results, the mean values of the parameters being measured shall be established over an agreed interval of time.

Table 2 — Limits of permissible variation of mean indicated values of controlled parameters

Controlled parameter	Limits of permissible variation of mean indicated values of controlled parameters for class of measurement accuracy ¹⁾		
	A	B	C
Flow rate, %	± 0,5	± 1,5	± 2,5
Pressures, %	± 0,5	± 1,5	± 2,5
Fluid temperature, K	± 1	± 2	± 4
Viscosity, %	± 5	± 10	± 15

1) See annex A.

6.4 Proof pressure

6.4.1 A proof pressure test in accordance with 6.4.1.1 to 6.4.1.5 shall be carried out to examine the integrity of the valve assembly being tested before any further tests are carried out.

6.4.1.1 Apply to each port (other than drain ports) a proof pressure 1,5 times the maximum operating pressure for that port.

6.4.1.2 Increase the pressure at a rate of approximately 2 % of proof pressure per second and maintain the proof pressure for 5 min.

6.4.1.3 There shall be no external leakage throughout this period.

6.4.1.4 Subject to any limitation on pressure in the outlet port imposed by the manufacturer, simultaneously subject the inlet and outlet ports to their respective proof pressure(s) for 5 min.

6.4.1.5 There shall be no external leakage throughout this period.

7 Test procedure for directional control valves

7.1 Test circuit

A test circuit similar to that shown in figure 1 shall be used.

7.2 Steady-state pressure differential/flow characteristics

At stated control element positions, determine the pressure differential/flow characteristics in accordance with the relevant clauses in ISO 4411.

7.3 Internal leakage

7.3.1 Immediately before conducting the test, operate the valve over the full range of movement at least 10 times in quick succession.

7.3.2 In order to determine the rate of leakage between the ports, apply agreed pressures to each port at which these tests are to be made.

7.4 Switching envelope

7.4.1 General

The purpose of these tests is to determine the operating threshold, i.e. the maximum pressure and associated maximum flow values at which the control element can be operated over the full range of its displacement in both directions of travel (see figure 2).

The movement of the control element shall be monitored by displacement transducers.

The test methods specified in 7.4.2 to 7.4.5 for valves in which the control element is displaced by an electrical solenoid, pilot pressure or force, and with or without spring return, respectively, shall be complied with.

In order to avoid inconsistencies due to siting, complete each set of measurements within 60 s of setting the control element position.

7.4.2 Direct-operated solenoid valves

7.4.2.1 Tests shall be carried out at the maximum stable temperature for the solenoid; this temperature shall be within the limits recommended in IEC Publication 85 for the class of insulation used for the coil winding.

7.4.2.2 Determine the temperature of the continuously energized winding at its nominal operating voltage under the condition of zero flow with the complete valve soaked in an ambient temperature equal to the temperature agreed for the test fluid by following the procedure outlined in 7.4.2.2.1 to 7.4.2.2.4. The mean winding temperature is calculated from the change in resistance of the winding after various periods of energization.

7.4.2.2.1 Measure the basic resistance after the de-energized valve has soaked for not less than 4 h at the agreed ambient temperature.

7.4.2.2.2 Energize the solenoid for 1 h. At the end of this period, measure the resistance 15 s after de-energization and at each 15 s interval thereafter over 90 s.

7.4.2.2.3 Repeat the step outlined in 7.4.2.2.2 as often as is necessary until the temperature has stabilized.

7.4.2.2.4 Determine the temperature at the instant of de-energization by regression analysis; this temperature is the continuously energized winding temperature.

7.4.2.3 All subsequent tests shall be carried out after a period of energization which is sufficient to ensure that the temperature has stabilized.

7.4.2.4 The operating thresholds of the valve shall be determined at a voltage 10 % below the nominal rating, unless other values are agreed.

7.4.2.5 The tests shall be carried out over the agreed ranges of pressure and flow to determine the limiting conditions at which the control element just fails to complete its full displacement under the force produced by the solenoid and/or under the return force exerted by the spring or reverse direction solenoid.

7.4.2.6 From this data obtained over an agreed number of tests, which shall be not less than six in total, determine the limiting values at which operation is consistently satisfactory.

7.4.2.7 In order to demonstrate that the voltage has been maintained at the intended value at all current levels, record time-based readings of the current taken by the solenoid and the voltage at the terminals of the coil.

7.4.3 Solenoid-controlled two-stage valves

7.4.3.1 Tests shall be carried out to determine the pilot pressure at which the final control element just fails to complete its full displacement.

7.4.3.2 The test shall be carried out over the agreed ranges of pressure and flow and the ranges used shall be stated in the test report.

7.4.3.3 The solenoid voltage shall be set at 10 % below the nominal rating, unless other values are agreed.

7.4.3.4 From this data obtained over an agreed number of tests, which shall be not less than six in total, determine the limiting values at which operation is consistently satisfactory.

7.4.3.5 In order to demonstrate that the voltage has been maintained at the intended value at all current levels, record time-based readings of the current taken by the solenoid and the voltage at the terminals of the coil.

7.4.4 Pilot-pressure-operated valves

7.4.4.1 Tests shall be carried out to determine the minimum pilot pressure at which the final control element just fails to complete its full displacement under the force exerted by the pilot and/or the return spring, or the reverse direction pilot piston.

7.4.4.2 These tests shall be carried out over the agreed ranges of pressure and flow and the ranges used shall be stated in the test report.

7.4.4.3 By agreement, these tests shall be carried out as follows:

- a) either apply a gradually increasing pilot pressure at a rate not exceeding 2 % of the maximum rated pilot pressure per second, or
- b) dynamically apply the pilot pressure at a rate of not less than 700 MPa/s (7 000 bar/s), or
- c) follow both procedures outlined in a) and b).

7.4.4.4 From this data obtained over an agreed number of tests, which shall be not less than six in total, determine the limiting values at which operation is consistently satisfactory.

7.4.5 Mechanically operated valves

7.4.5.1 The tests shall be carried out over the agreed ranges of pressure and flow and the ranges used shall be stated in the test report.

7.4.5.2 From this data obtained over an agreed number of tests, which shall be not less than six in total, determine the limiting values of control operating effort at which operation is consistently satisfactory.

7.5 Transient characteristics

7.5.1 Determine the transient characteristics of the valve at a flow rate equivalent to 80 % of the switching threshold at the maximum rated pressure and, where applicable, at the stated pilot pressure.

7.5.2 For these tests, the capacitance of the circuits on the output side of the valve shall be limited to the volume enclosed by the valve, including its associated manifolds.

7.5.3 The ports shall be blocked off in a manner appropriate to the pressures to be applied and the volumes shall be pre-filled with the operating fluid.

7.5.4 In the case of solenoid controlled valves, the test shall be carried out at the nominal rated voltage and at the temperature conditions of the solenoid, as specified in 6.2, the switching being initiated at the moment of zero voltage in the case of a.c. operation.

7.5.5 In the case of pilot-pressure-operated valves, the rate of change of pressure in the pilot circuit shall be arranged so as to achieve rapid operation of the control element, for example by operating the mechanism by means of a falling weight.

7.5.6 If practicable, obtain the delay times t_1 and t_2 and the response times t_3 and t_4 from recorded data indicating the spool displacement in response to the command signal to the control element (see figure 3).

7.5.7 When presenting this data, the technique used for measuring the displacement shall also be described.

7.5.8 Alternatively, obtain the delay times t_5 and t_6 and the response times t_7 and t_8 from recorded data indicating the rate of change of pressure in the outlet ports in response to the command signal to the control element (see figure 4).

8 Test procedure for non-return (check) valves

8.1 Test circuits

8.1.1 Test circuits similar to those shown in figures 5 and 6, for direct-acting non-return valves, and in figure 7, for pilot-pressure-operated non-return valves, shall be used.

8.1.2 When testing pilot-pressure-operated non-return valves for which the flow is from port A to port B, the tests shall be carried out with and without pressure applied to port X. When the flow is reversed, i.e. from port B to port A, the pilot pressure shall be applied to port X.

8.2 Pressure differential/flow characteristics

Determine the pressure differential/flow characteristics in accordance with the relevant clauses in ISO 4411.

8.3 Pilot pressure

8.3.1 The purpose of this test is to establish

- a) the minimum pilot pressure, $p_{X, \text{open}}$, necessary both to open the valve and to maintain it fully open;
- b) the maximum pilot pressure, $p_{X, \text{closed}}$, which will allow the valve to reseal, over an agreed range of pressures p_A and p_B , and flow q_V .

NOTE — Establish p_A before the valve is opened.

8.3.2 With the system parameters p_A , p_B and q_V under steady-state conditions, raise the pilot pressure, p_X , from zero to a value at which the flow reaches q_V .

8.3.3 Record pilot pressure, p_X , and flow, q_V , on a suitable recording instrument and from the reading determine the minimum pilot pressure, $p_{X, \text{open}}$ necessary to open the valve and to permit the selected flow conditions.

8.3.4 With the system parameters p_A as low as possible and p_B and q_V under steady-state conditions, lower the pilot pressure, p_X , at least until the valve closes.

8.3.5 Record the pilot pressure, p_X , and flow, q_V , on a suitable recording instrument and from the reading determine the maximum pilot pressure, $p_{X, \text{closed}}$, to permit the valve to close.

8.4 Leakage

The leakage tests outlined in 8.4.1 and 8.4.2 shall be carried out for periods of 5 min and the quantities measured shall be recorded.

8.4.1 Direct acting valves

Measure the leakage from port A with the agreed range of pressure applied to port B and with port A at atmospheric pressure.

8.4.2 Pilot-pressure-operated valves

Measure the leakage from port A with the agreed range of pressure applied to port B and with ports A and X at atmospheric pressure; in addition, where applicable, measure the leakage from drain port Y.

9 Test procedure for valves controlling pressure

9.1 Test circuits

9.1.1 Test circuits for pressure-relief and pressure-reducing valves similar to those shown in figures 8 and 9 respectively shall be used.

9.1.2 The amplitude of the pressure ripple measured in the supply circuit shall not exceed $\pm 0,5$ MPa (5 bar).

9.1.3 The volumetric stiffness of the relevant parts of the test valve and circuit shall be such that the rate of change of pressure, with the maximum agreed input flow, lies within the limits of one agreed range selected from the following :

- 3 000 to 4 000 MPa/s (30 000 to 40 000 bar/s)
- 600 to 800 MPa/s (6 000 to 8 000 bar/s)
- 120 to 160 MPa/s (1 200 to 1 400 bar/s)

9.2 Control setting

9.2.1 Immediately before the measurements specified in 9.2.2 are taken, operate the valve over the full cycle of its range of adjustment at least 10 times in quick succession.

9.2.2 Measure the torque, force, pressure or electrical input necessary to change the control setting position throughout the pressure range from minimum to maximum and back to

minimum over the agreed range of flows through the valve. Record these values in the test report.

9.2.3 In order to avoid inconsistencies due to silting, complete each set of measurements within 60 s of setting the control element position.

9.3 Pressure-relief valves

9.3.1 Steady-state pressure/flow characteristics

9.3.1.1 Measure the inlet pressure p_a , as recorded by instrument **5a** of figure 8, for the range of flows from zero to the agreed maximum for both increasing flow and decreasing flow, at an agreed number of settings of the control element of the test valve, including the minimum and maximum adjustments provided on the valve.

9.3.1.2 The pressure p_b in the return line, as recorded by instrument **5b**, at the outlet of the test valve in figure 8 shall be adjusted, by operating valve **8** so that it remains constant at agreed level(s).

9.3.2 Transient characteristics

9.3.2.1 Measure the transient pressure p_a for any given setting of the control valve at agreed values of flow, by using valve **3a** (as shown in figure 8), which, when in the unloaded condition, shall reduce the pressure at the inlet of the test valve to not more than 20 % of the required operating pressure. The pressure p_a is indicated by instrument **5a** of figure 8.

9.3.2.2 During pressure transient characteristic tests, the restrictor **8** in figure 8 shall be fully open.

9.3.2.3 Record the pressure/time curve and deduce or record the rate of change of pressure. Record the mean linear rise value, in megapascals per second (MPa/s) [bars per second (bar/s)], over the portion from the operation of valve **3a** to the point of discontinuity, i.e. the point at which the valve starts to lift, as indicated in figure 17. Verify that, at the maximum agreed flow, this linearized rate falls within the selected range specified in 9.1.3.

9.3.2.4 The operating time of valve **3a** in figure 8 shall not exceed 10 % of the linearized portion of the pressure/time curve as described in 9.3.2.3.

9.3.2.5 The instrument used to measure the pressure gradient due to oil compressibility, as calculated from the expression $\frac{dp}{dt} = \frac{q_V \cdot K_s}{V}$, where V is the volume of fluid between test valve **6** and valves **3a** and **3b**, shall have a response capability at least 10 times the measured gradient.

NOTE — The response time and transient recovery time of the valve being tested are defined in figure 17.

9.3.2.6 When a valve controlling pressure is being tested, the flow indicator **9** shall show that there is no flow through the test circuit relief valve **2**.

9.4 Pressure-reducing valves

9.4.1 Steady-state pressure-flow characteristics

9.4.1.1 Measure the steady-state output pressure for agreed increments of controlled flow set by valve **8** from zero to maximum and reducing to zero.

9.4.1.2 Take these measurements over an agreed range of inlet pressures set by valve **2a** and range of control element settings, including the maximum and minimum.

9.4.1.3 In addition, take measurements of the leakage through flowmeter **7b**.

9.4.1.4 When applicable, repeat this procedure for reverse flow condition, with port **A** at atmospheric pressure.

9.4.2 Transient characteristics

9.4.2.1 Transient tests shall be carried out in which the outlet pressure is measured over an agreed range of pressure settings in accordance with the procedure for relief valves given in 9.3.2 for flows in the normal and, when agreed, reverse directions.

9.4.2.2 Apply agreed step functions to the input pressure and to the output flow at each pressure setting.

9.4.2.3 Apply the agreed changes in pressure over the agreed range of flows to the inlet, including an initial pressure of less than 50 % of the setting of the valve being tested to ensure that the control element is fully open.

9.5 Unloading valves

9.5.1 Where pressure-relief or -reducing valves are pilot operated, they may be vented (i.e. reduced to the minimum controlled pressure) by by-passing the pilot stage by means of a venting valve **3b** (as shown in figures 8 and 9).

9.5.2 Measure the resultant minimum operating pressures of the valve being tested for an agreed range of flows in accordance with the relevant clauses of ISO 4411.

9.5.3 Transient tests in accordance with 9.3.2 or 9.4.2 shall be carried out to establish the times necessary to achieve minimum pressure and to re-establish maximum pressure, from the moment the venting valve **3b** is operated.

9.5.4 The venting valve **3b** may be operated manually or hydraulically, or by a solenoid operated or electrohydraulic servo-valve providing that it has an operating time not exceeding 10 % of the measured response time subject to a maximum of 10 ms.

10 Test procedure for flow control valves

10.1 Test circuits

10.1.1 Test circuits similar to those shown in figures 10, 11 and 12 shall be used.

10.1.2 An accumulator of sufficient capacity to maintain the supply pressure within the limits given in table 2 shall be installed in the supply circuit.

10.1.3 The amplitude of the pressure ripple, measured in the supply circuit, shall not exceed $\pm 0,5$ MPa (5 bar).

10.2 Steady-state flow/pressure characteristics

The regulated flow and bypass flow, if applicable, shall be measured over agreed ranges of control element settings and pressure differentials.

10.2.1 Valves with pressure compensation

Tests shall be carried out at agreed steps of inlet and outlet pressures from minimum to maximum specified pressures and flows.

10.2.2 Valves without pressure compensation

Tests shall be carried out in accordance with the relevant clauses of ISO 4411.

10.3 Control setting

10.3.1 Immediately before the measurements specified in 10.3.2 are taken, operate the valve over the full cycle of its range of adjustment at least 10 times in quick succession.

10.3.2 Measure the torque, force, pressure or electrical input necessary to change the control setting position over the flow range from minimum to maximum and back to minimum over the agreed range of pressures while the valve is operating. Record these values in the test report.

10.3.3 In order to avoid inconsistencies due to silting, complete each set of measurements within 60 s of setting the control element position.

10.4 Transient tests on pressure-compensated valves

10.4.1 Measure the regulated flow over the agreed ranges of control element settings and pressure differentials when the inlet pressure is varied in the case of meter-out, bleed-off and three-way bleed-off configurations and when the outlet pressure is varied in the case of a meter-in configuration.

10.4.2 The operating time of valve **9** (see figures 10 to 12) shall not exceed 10 % of the measured response time with a maximum of 10 ms.

10.4.3 The pressure gradient due to fluid compressibility, as calculated from the expression $\frac{dp}{dt} = \frac{q_V \cdot K_s}{V}$, where V is the volume of fluid between test valve 5 and valves 8a and 8b, shall be at least 10 times the measured gradient.

10.4.4 The procedure outlined in 10.4.4.1 to 10.4.4.2 shall be followed.

10.4.4.1 Establish steady-state flow q_V , by setting valve 5, and pressure drop Δp_2 , by setting valve 8a with valve 9 closed.

10.4.4.2 Establish pressure drop Δp_1 , by setting valve 8b with valve 9 open.

10.4.4.3 Introduce a load step by either of the following methods:

a) **Preferred method 1** (using a high frequency response flow transducer)

Operate two-way valve 9 and monitor the transient flow q_{V_t} .

NOTE — A check on the adequacy of the response of the flow transducer can be obtained by simultaneously recording the transient pressure p_t and observing that the flow and pressure oscillations are in phase.

b) **Alternative method 2** (using a pressure transducer)

Operate two-way valve 9, monitor the pressure drop Δp and derive the corresponding transient characteristics from the initial flow and transient flow which are calculated from the following expressions:

- Initial flow, $q_{V_1} = k \sqrt{\Delta p_1}$
- Transient flow, $q_{V_t} = k \sqrt{\Delta p}$

where

k is the loading valve coefficient determined from the expression

$$k = \frac{q_V}{\sqrt{\Delta p_2}}$$

where Δp_2 is the pressure drop at the end of the test;

Δp is the differential pressure across the loading valves measured by the pressure indicators 4a and 4b (see figures 10 to 12);

Δp_1 is the pressure drop at the beginning of the test.

NOTE — The response time and the transient recovery time of the valve are as defined in figure 19.

11 Test procedure for flow-dividing valves

11.1 Test circuit

11.1.1 A test circuit similar to that shown in figure 13 shall be used.

11.1.2 The amplitude of the pressure ripple, measured in the supply circuit, shall not exceed $\pm 0,5$ MPa (5 bar).

11.2 Steady-state flow/pressure characteristics

11.2.1 Measure the input pressure and each output flow over an agreed range of input flows for an agreed range of output pressures selected from the conditions specified in table 3 for each agreed setting of the ratio control element, if such a setting is provided.

Table 3 — Output pressure conditions

Sequence	Output pressure conditions at port	
	B1	B2
1	p_{min}	$p_{min} \rightarrow p_{max} \rightarrow p_{min}$
2	$p_{min} \rightarrow p_{max} \rightarrow p_{min}$	p_{min}
3	p_{max}	$p_{min} \rightarrow p_{max} \rightarrow p_{min}$
4	$p_{min} \rightarrow p_{max} \rightarrow p_{min}$	p_{max}
5	$p_{min} \rightarrow p_{max} \rightarrow p_{min}$	$p_{min} \rightarrow p_{max} \rightarrow p_{min}$

11.2.2 In sequence 5, the pressure at ports B1 and B2 shall be equal.

11.3 Transient tests

11.3.1 Measure the flows from each output port over an agreed range of input flows for an agreed range output pressure selected from the conditions specified in table 3 for each agreed setting of the ratio control element, if such a setting is provided.

11.3.2 Measure the steady-state flows $q_{V_{B1}}$ and $q_{V_{B2}}$, with valve 7a set at the highest value of the pressure loading p_1 and with valve 6a closed.

11.3.3 Record the pressure p_2 indicated by 4d.

11.3.4 Establish the lower pressure loading p_3 by setting valve 7b with valve 6a open and record the pressure p_4 indicated by 4d.

11.3.5 Repeat this procedure for the loading system for port B2 to determine pressures p_5 , p_6 , p_7 and p_8 , respectively.

11.3.6 Calculate the pressure drops across loading valves 6a and 6b using the following expressions:

$$\Delta p_{2,B1} = p_1 - p_2$$

$$\Delta p_{1,B1} = p_3 - p_4$$

and

$$\Delta p_{2,B2} = p_5 - p_6$$

$$\Delta p_{1,B2} = p_7 - p_8$$

11.3.7 Introduce a load step by either of the following methods:

- a) **Preferred method 1** (using a high frequency response flows transducer)

Operate two-way valves **6a** and/or **6b** and monitor the transient flows $q_{V_{1,A}}$ and $q_{V_{1,B}}$.

NOTES

1 A check on the adequacy of the response of the flow transducers can be obtained by simultaneously recording the transient pressures $p_{t,B1}$ and $p_{t,B2}$ and observing that the flow and pressure oscillations are in phase.

2 The response time of the valve is as defined in figure 19.

- b) **Alternative method 2** (using pressure transducers)

Determine the loading valve coefficients k_A , k_B , k_C and k_D from the expressions

$$k_A = \frac{q_{V_A}}{\sqrt{\Delta p_{2,B1}}}$$

$$k_B = \frac{q_{V_B}}{\sqrt{\Delta p_{1,B1}}}$$

and similarly

$$k_C = \frac{q_{V_C}}{\sqrt{\Delta p_{2,B2}}}$$

$$k_D = \frac{q_{V_D}}{\sqrt{\Delta p_{1,B2}}}$$

Operate two-way valve(s) **6a** and/or **6b** and monitor the transient pressure drops $\Delta p_{t,A}$ and $\Delta p_{t,B}$.

To derive the corresponding flow transient characteristics, calculate the initial flow at port A, $q_{V_{1,A}}$, from the expression

$$q_{V_{1,A}} = k_A \sqrt{\Delta p_{1,B2}}, \text{ etc.}$$

and the transient flow, $q_{V_{t,A}}$, from the expression

$$q_{V_{t,A}} = k_A \sqrt{\Delta p_{B2}}, \text{ etc.}$$

Similarly calculate the initial flow, $q_{V_{1,B}}$, and the transient flow, $q_{V_{t,B}}$, at port B from the expressions

$$q_{V_{1,B}} = k_B \sqrt{\Delta p_{1,B2}}, \text{ etc.}$$

and

$$q_{V_{t,B}} = k_B \sqrt{\Delta p_{B2}}, \text{ etc.}$$

In the equations above

Δp_{B1} is the pressure drop across the loading valves **7a** and **7b** as measured by pressure indicators **4b** and **4d**.

Δp_{B2} is the pressure drop across the loading valves **7c** and **7d** as measured by pressure indicators **4c** and **4e**.

12 Test report

12.1 General

A test report which records the relevant data specified in 12.2 (as appropriate), test results and the class of measurement used shall be drawn up.

12.2 Test data

The minimum data, as specified in this sub-clause, referring to the valve being tested and to the test conditions shall be agreed and stated before the tests are carried out.

12.2.1 Data common to all valves

The following minimum data shall be included in the test report:

- a) the class of measurement accuracy (see annex A);
- b) the manufacturer's name;
- c) the manufacturer's identification (type number, serial number, etc.);
- d) the manufacturer's description of valve;
- e) details of pipes, pressure tapping points and fittings which interface with the test valve (see 5.1.4 and 5.2.1);
- f) the manufacturer's filtration requirements (see 5.3.1);
- g) the standard of filtration installed in test circuit (see 5.3.2 and 5.3.3);
- h) the actual contamination level of the test fluid (see 5.3.4);
- i) the test fluid (by name and description) (see 6.1);
- j) the test fluid kinematic viscosity or viscosities (see 6.1);
- k) the test fluid density (see 6.1);
- l) the test fluid isentropic bulk modulus (see 6.1);
- m) the test fluid temperature(s) (see 6.2);
- n) the ambient temperature;
- o) the maximum operating pressure;
- p) the pressure rating for each port;
- q) the maximum flow rating agreed for the test, $q_{V_{max}}$.

12.2.2 Additional data for directional control valves

The following additional data pertinent to directional control valves shall be included in the test report:

- a) the number of switching envelope tests (see 7.4.2.6);
- b) electrical data for solenoid-operated valves (see 7.4.2);
- c) minimum and maximum operating pressures for pilot-pressure-operated valves, if appropriate (see 7.4.3);

- d) forces for mechanically operated valves (see 7.4.4);
- e) any special features, e.g. constraints on mounting attitude.

12.2.3 Additional data for non-return (check) valves

The following additional data pertinent to non-return (check) valves shall be included in the test report:

- a) minimum and maximum operating pressures for pilot-pressure-operated valves, if appropriate (see 8.3);
- b) any special features, e.g. constraints on mounting attitudes.

12.2.4 Additional data for valves controlling pressure

The following additional data pertinent to valves controlling pressure shall be included in the test report:

- a) the pressure range (see 9.1.3);
- b) the minimum pressure setting (see 9.2);
- c) the method used for control setting (see 9.2);
- d) any special features, e.g. venting (see 9.5);
- e) the selected range of rate of change of pressure (see 9.1 and 9.3.2).

12.2.5 Additional data for flow control valves

The following additional data pertinent to flow control valves shall be included in the test report:

- a) the minimum flow (see 10.2, 10.3 and 10.4);
- b) the method used for control setting (see 10.3).

12.2.6 Additional data for flow-dividing valves

The following additional data pertinent to flow-dividing valves shall be included in the test report:

- a) the minimum flow (see 11.2);
- b) the range of ratio adjustment, if appropriate (see 11.2).

12.3 Test results

All test measurements, including these outlined in 12.3.1 to 12.3.6, shall be tabulated and presented graphically, if appropriate, in the test report.

12.3.1 For all valves, as regards the proof pressure test, details of the test conditions at point of failure, if appropriate (see 6.4), shall be included.

12.3.2 For directional control valves, the following details shall be included:

- a) the pressure/flow characteristics (see figure 3 in ISO 4411) (see also 7.2);

b) internal leakage, i.e. between specified ports at the agreed differential pressures (see 7.3);

c) the switching envelope, i.e. the working range (see figure 2 and 7.4);

d) the operating effort, i.e. torque, force, pressure or electrical input, as appropriate (see 7.4);

e) the response time, obtained from either

- 1) displacement/time relationships (see figure 3) (the method used to measure the displacement shall be stated), or
- 2) pressure/time relationships (see figure 4).

12.3.3 For non-return (check) valves, the following details shall be included:

- a) the pressure/flow characteristics for direct acting valves, see figure 4 in ISO 4411 and for pilot-pressure-operated valves, see figure 14 in this International Standard and figure 4 in ISO 4411;
- b) the pilot pressure, p_x (see figure 15 and 8.3.4);
- c) the leakage characteristics (see 8.4.).

12.3.4 For valves controlling pressure, the following details shall be included:

- a) the control setting effort over operating range (see 9.2);
- b) the steady-state pressure/flow characteristics, including pilot flow, where appropriate (see figure 16 and 9.3.1);
- c) the dynamic characteristics for each flow and pressure setting (see figure 17 and 9.3.2), i.e.
 - 1) the rate of change of pressure in the blocked-off circuit,
 - 2) the pressure/time recording,
 - 3) the response time,
 - 4) the ratio of maximum pressure overshoot to final steady-state pressure.

12.3.5 For flow control valves, the following details shall be included:

- a) the steady-state flow/pressure characteristics over the agreed range of settings (see figure 18 and 10.2);
- b) the control setting effort, i.e. torque, force, pressure or electrical input, as appropriate (see 10.3);

c) the dynamic characteristics for each flow and pressure setting (see figure 9 and 10.4), i.e.

- 1) either flow/time recordings of transient tests showing superimposed pressure/time verification or pressure/time recordings of results showing the co-ordinates at which the flows are calculated, and a graphical representation of derived flow/time characteristics,
- 2) the response and transient recovery times,
- 3) the ratio of the flow overshoot to the final steady-state load step.

12.3.6 For flow-dividing valves, the following details shall be included:

- a) the steady-state flow/pressure characteristics (see 11.2);
- b) the dynamic characteristics for each flow and pressure rate for each port (in a manner similar to figure 19), i.e.

- 1) either flow/time recordings of transient tests showing superimposed pressure/time verification or pressure/time recordings of results showing the co-ordinates at which the flows are calculated, and a graphical representation of derived flow/time characteristics,

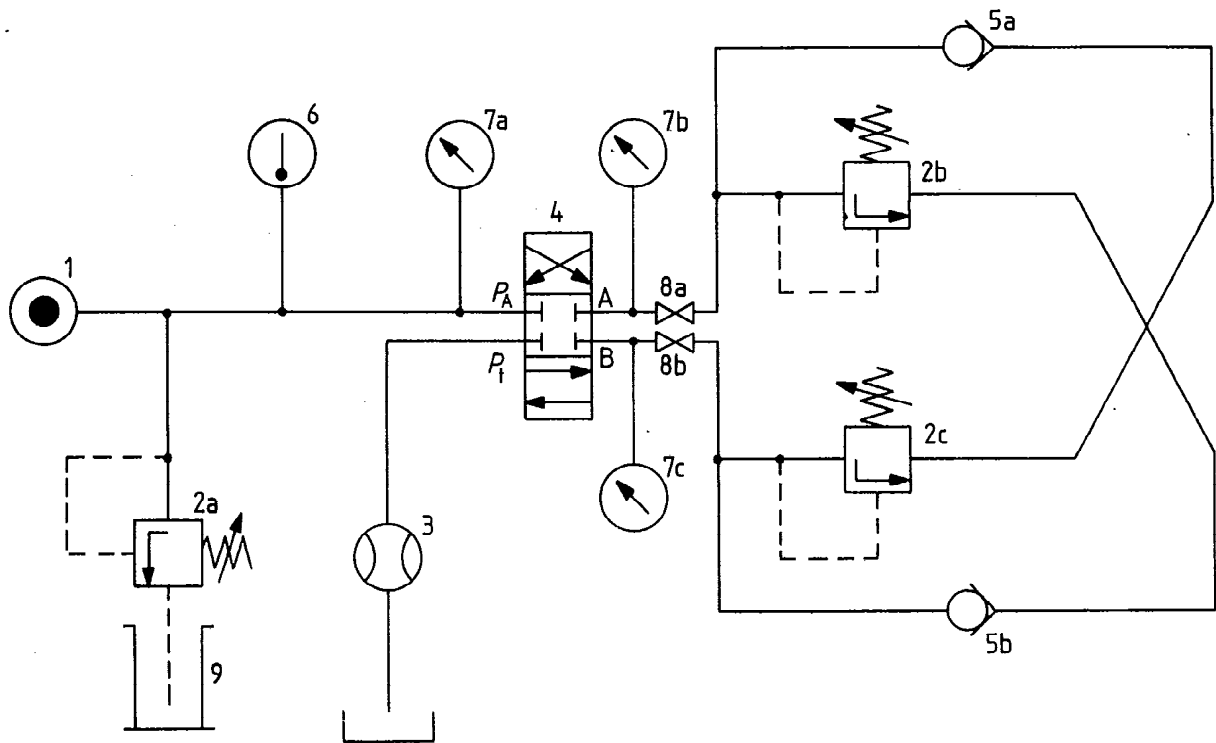
- 2) the response and transient recovery times,

- 3) ratio of the overshoot/undershoot to the final steady-state flow.

13 Identification statement (Reference to this International Standard)

Use the following statement in test reports, catalogues and sales literature when electing to comply with this International Standard:

"Tests for determining steady-state and dynamic performance conform with the appropriate methods described in ISO 6403, Hydraulic fluid power — Valves controlling flow and pressure — Test methods."



Key

- 1 Flow source
- 2a, 2b, 2c Pressure-relief valves
- 3 Flowmeter
- 4 Valve being tested
- 5a, 5b Non-return valves
- 6 Temperature indicator
- 7a, 7b, 7c Pressure indicators
- 8 Shut-off valve
- 9 Zero flow indicator

Figure 1 — Test circuit for directional control valves

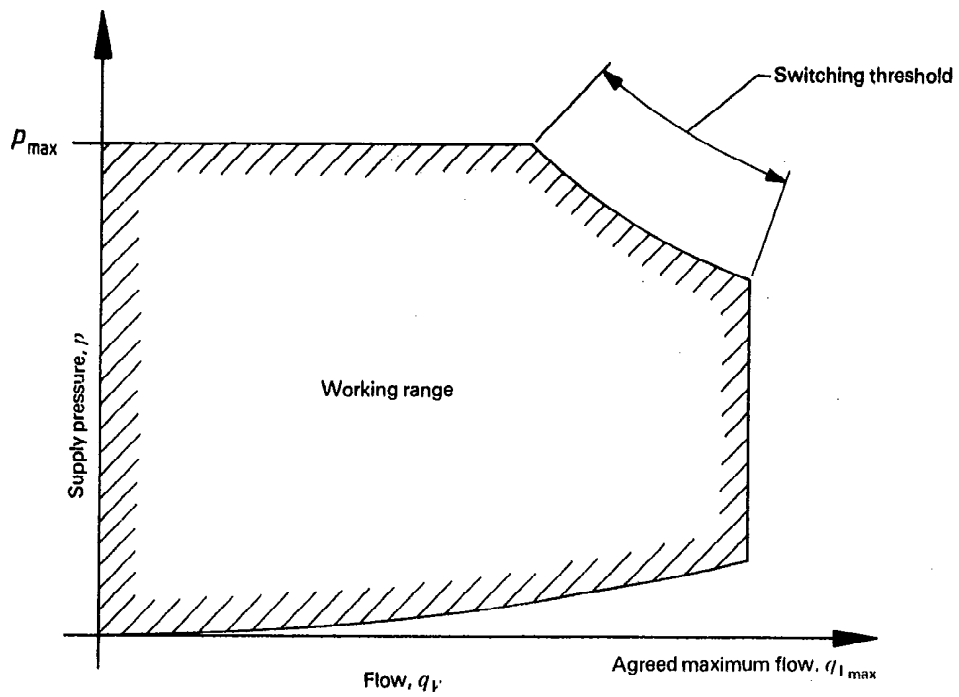


Figure 2 – Switching envelope for directional control valves

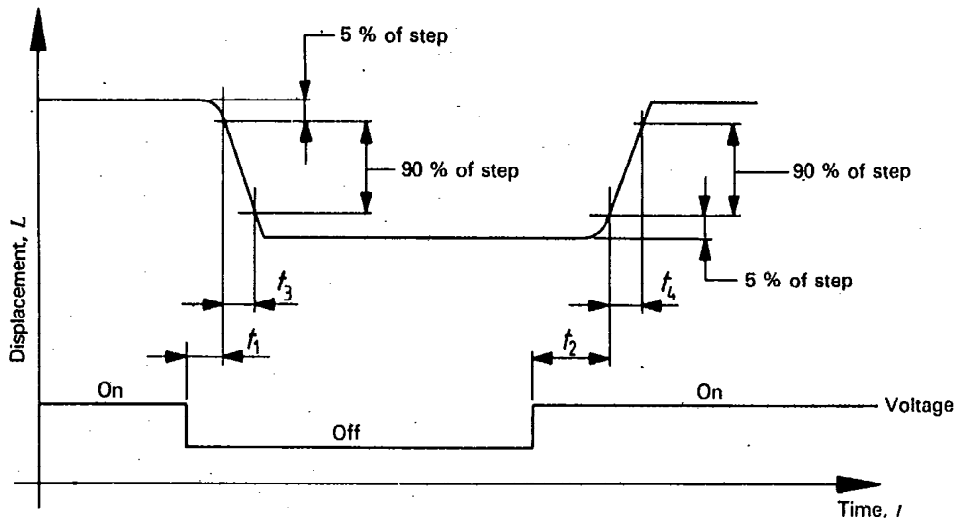


Figure 3 – Transient characteristics for operation of directional control valves – Relationship between displacement and time

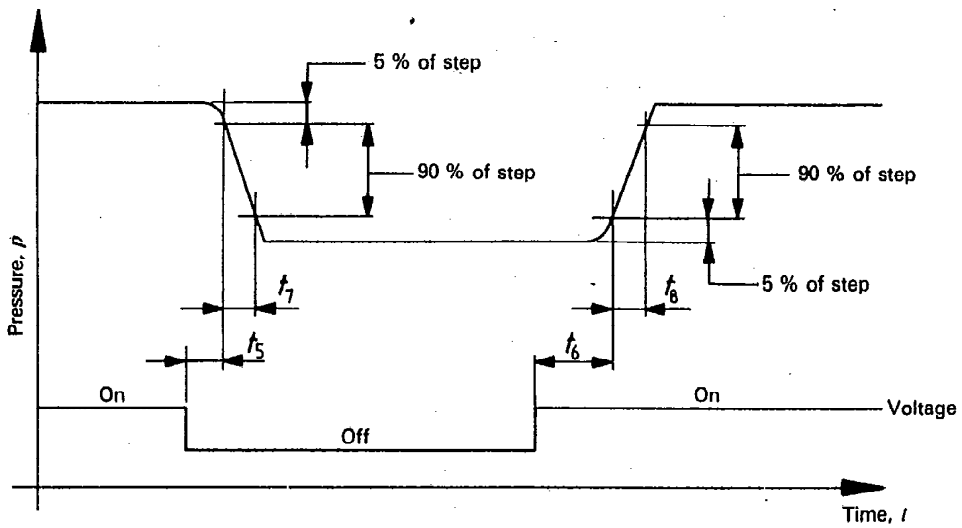
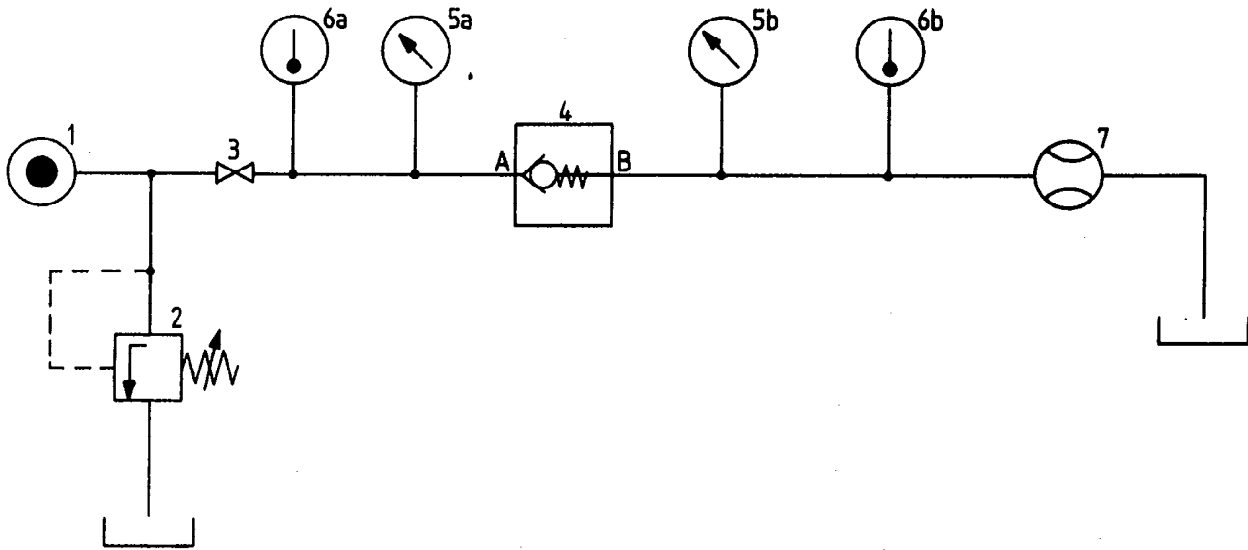


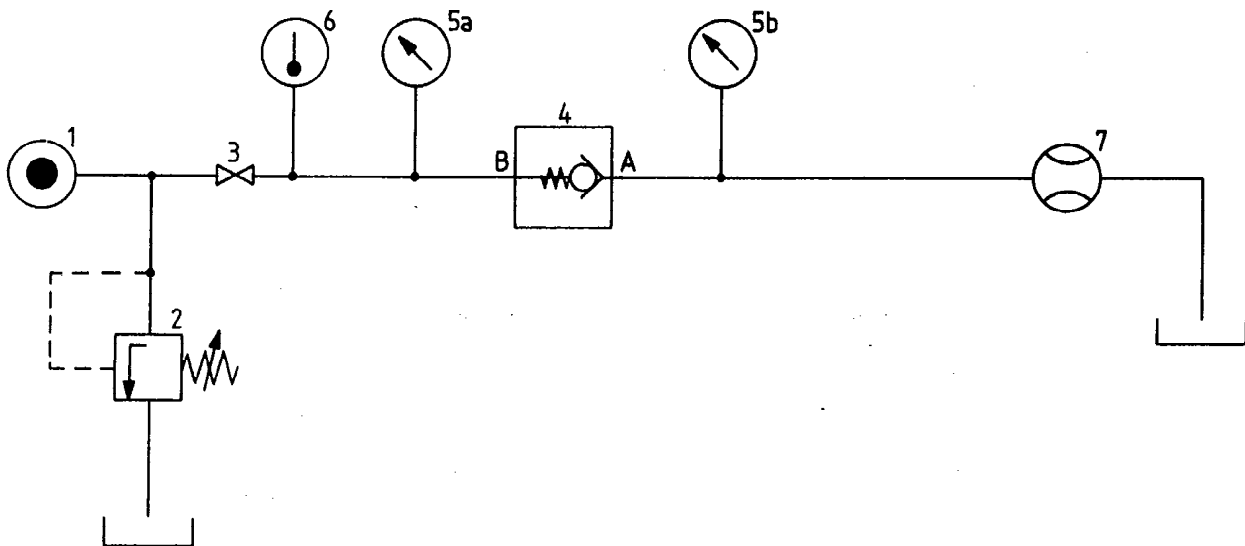
Figure 4 – Transient characteristics for operation of directional control valves – Relationship between pressure and time



Key

- 1 Flow source
- 2 Pressure-relief valve
- 3 Shut-off valve
- 4 Valve being tested
- 5a, 5b Pressure Indicators
- 6a, 6b Temperature indicators
- 7 Flowmeter

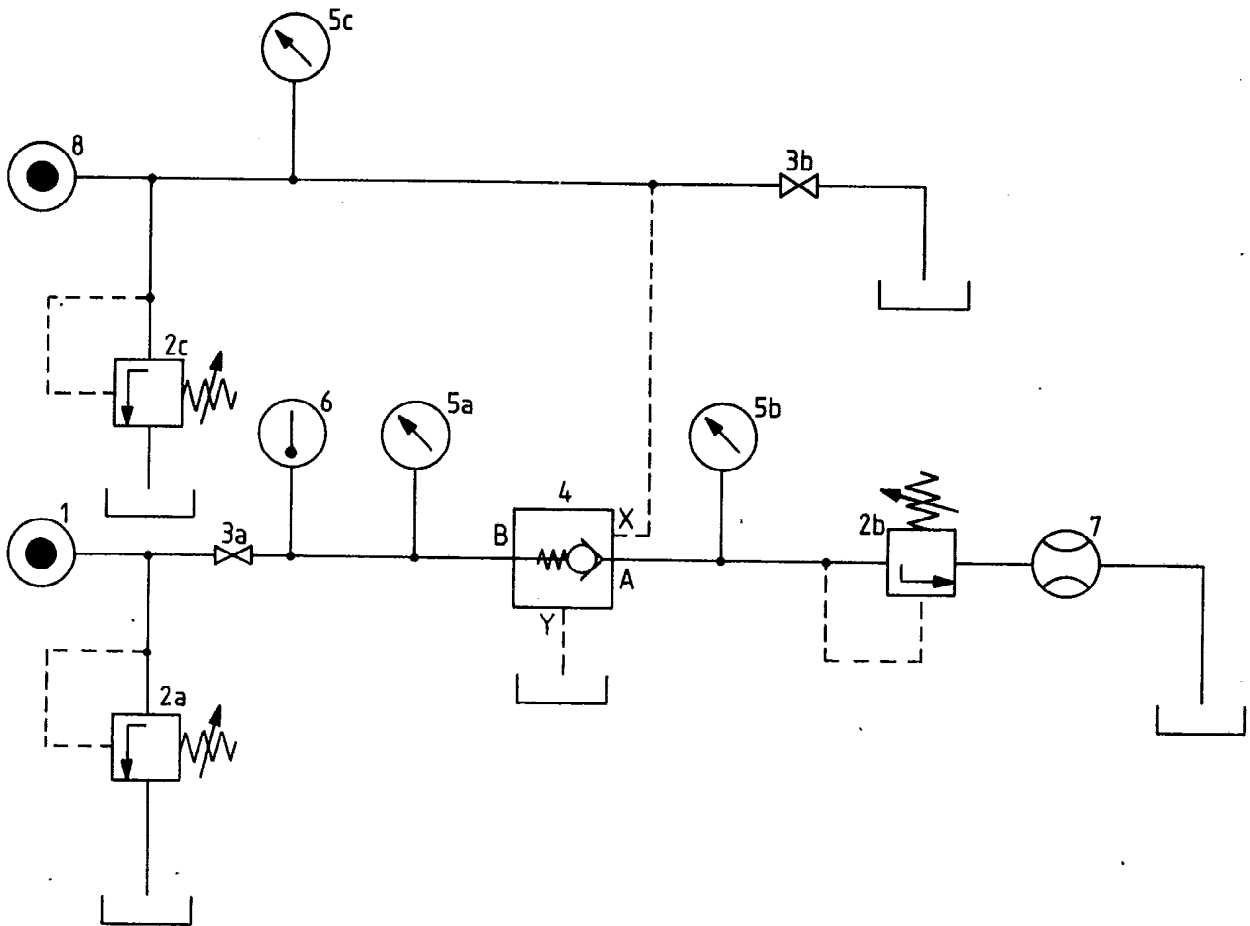
Figure 5 – Test circuit for direct-acting non-return valves



Key

- 1 Flow source
- 2 Pressure-relief valve
- 3 Shut-off valve
- 4 Valve being tested
- 5a, 5b Pressure indicators
- 6 Temperature indicator
- 7 Flowmeter

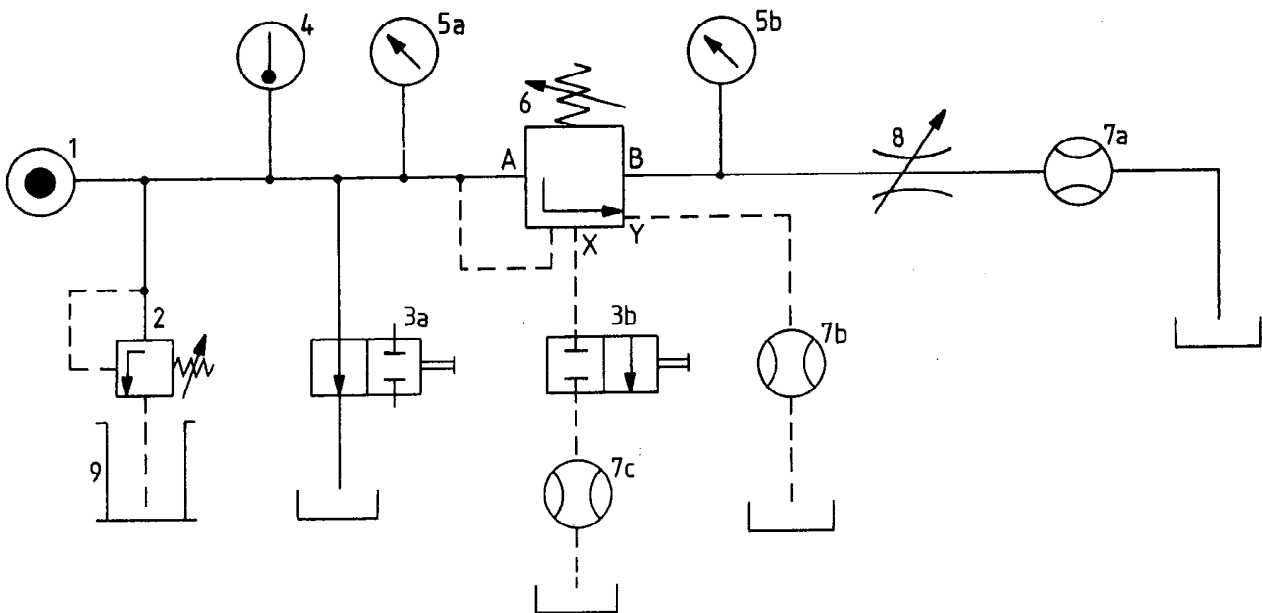
Figure 6 – Test circuit for leakage flow of direct-acting non-return valves



Key

- 1 Flow source
- 2a, 2b, 2c Pressure-relief valves
- 3a, 3b Shut-off valves
- 4 Valve being tested
- 5a, 5b, 5c Pressure indicators
- 6 Temperature indicator
- 7 Flowmeter
- 8 Pilot flow source

Figure 7 — Test circuit for pilot-pressure-operated non-return valves

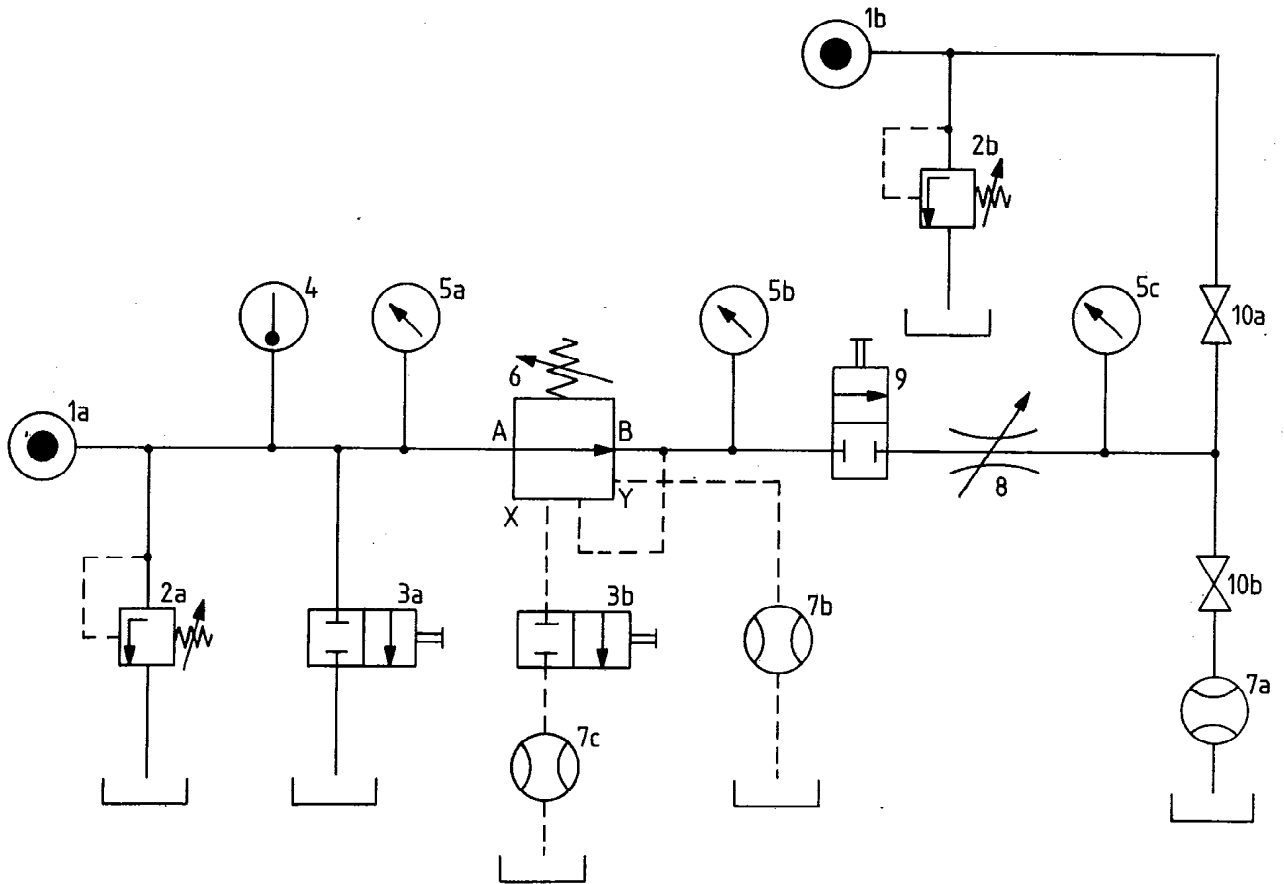


Key

- 1 Flow source
- 2 Pressure-relief valve
- 3a, 3b By-pass valves
- 4 Temperature indicator
- 5a, 5b Pressure indicators
- 6 Valve being tested
- 7a, 7b, 7c Flowmeters
- 8 Variable orifice
- 9 Zero flow indicator

NOTE — The requirements for tapping point positions are given in 5.2.

Figure 8 — Test circuit for pressure-relief valves



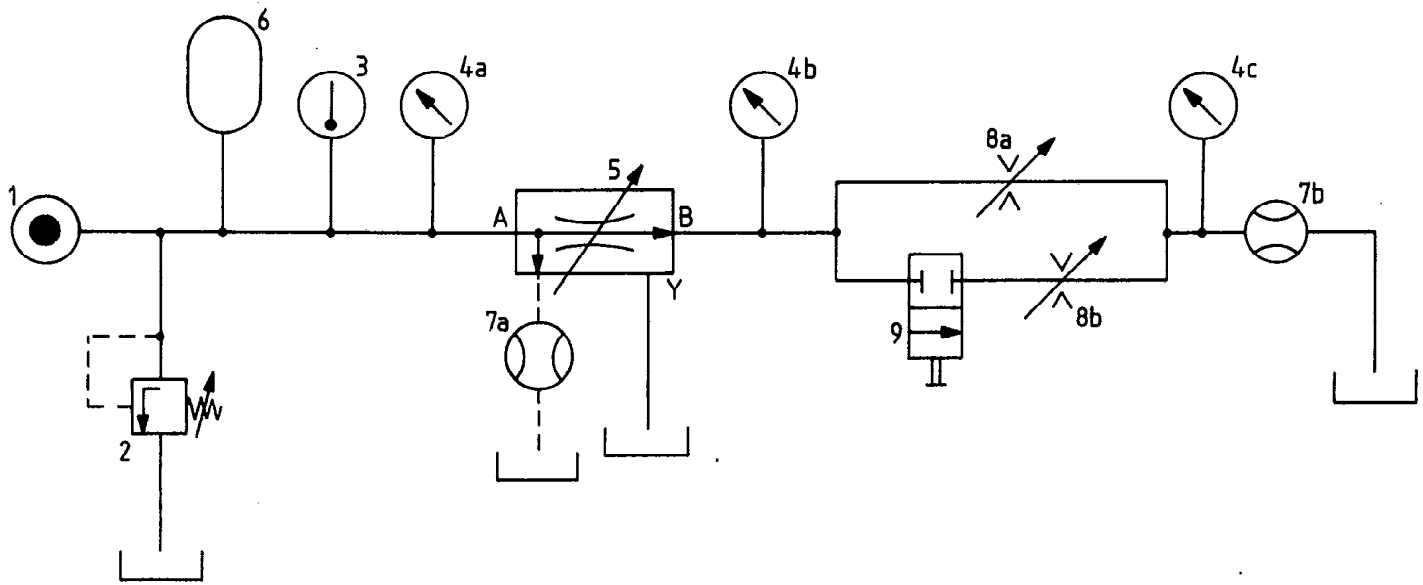
Key

- 1a, 1b** Flow sources
- 2a, 2b** Pressure-relief valves
- 3a, 3b** By-pass valves
- 4** Temperature indicator
- 5a, 5b, 5c** Pressure indicators
- 6** Valve being tested
- 7a, 7b, 7c** Flowmeters
- 8** Variable orifice
- 9** Two-way valve
- 10a, 10b** Shut-off valves

NOTES

- 1 Items 1b and 2b are not required for two-port reducing valves.
- 2 The circuit between test valve 6 and loading valve 8 should be assembled from rigid piping and the oil volume should be kept as small as possible.
- 3 The requirements for tapping point positions are given in clause 5.2.

Figure 9 – Test circuit for pressure-reducing valves



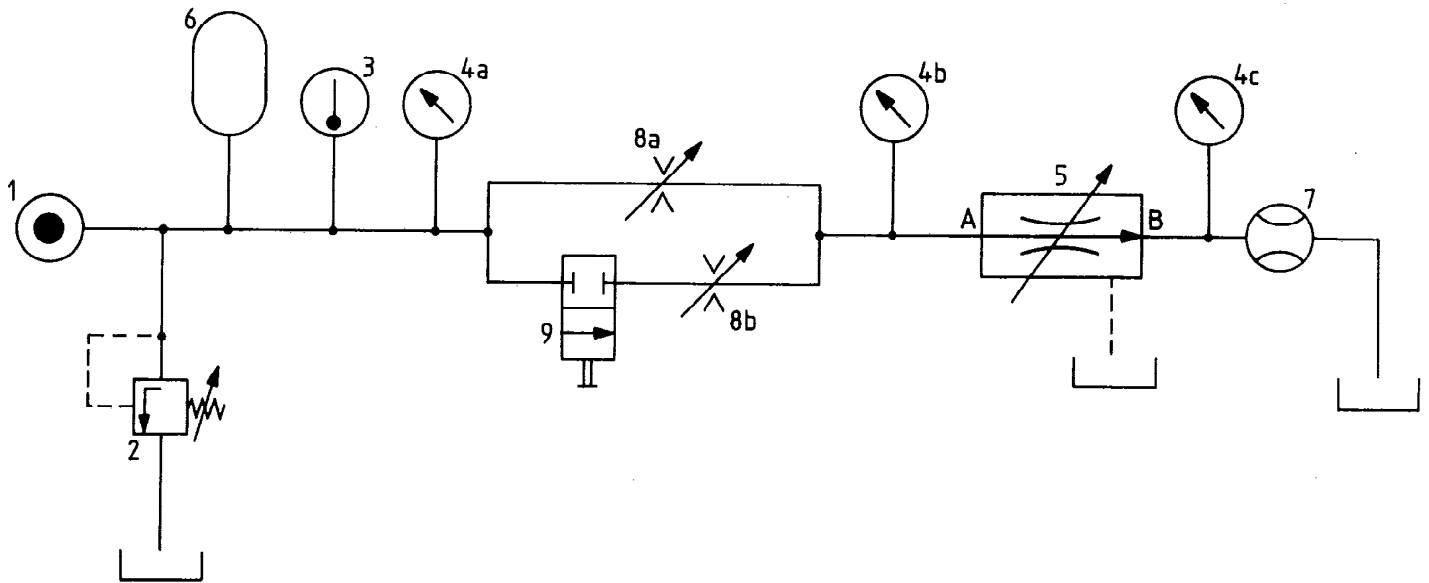
Key

- 1 Flow source
- 2 Pressure-relief valve
- 3 Temperature indicator
- 4a, 4b, 4c Pressure indicators
- 5 Valve being tested
- 6 Accumulator
- 7a, 7b Flowmeters
- 8a, 8b Variable sharp-edge orifices
- 9 Two-way valve

NOTES

- 1 The circuit between test valve 5 and loading valve 8a and 8b should be assembled from rigid piping and the fluid volume should be kept as small as possible.
- 2 The requirements for tapping point positions are given in clause 5.2.

Figure 10 — Test circuit for flow control valves (meter-in and three-way bleed-off)



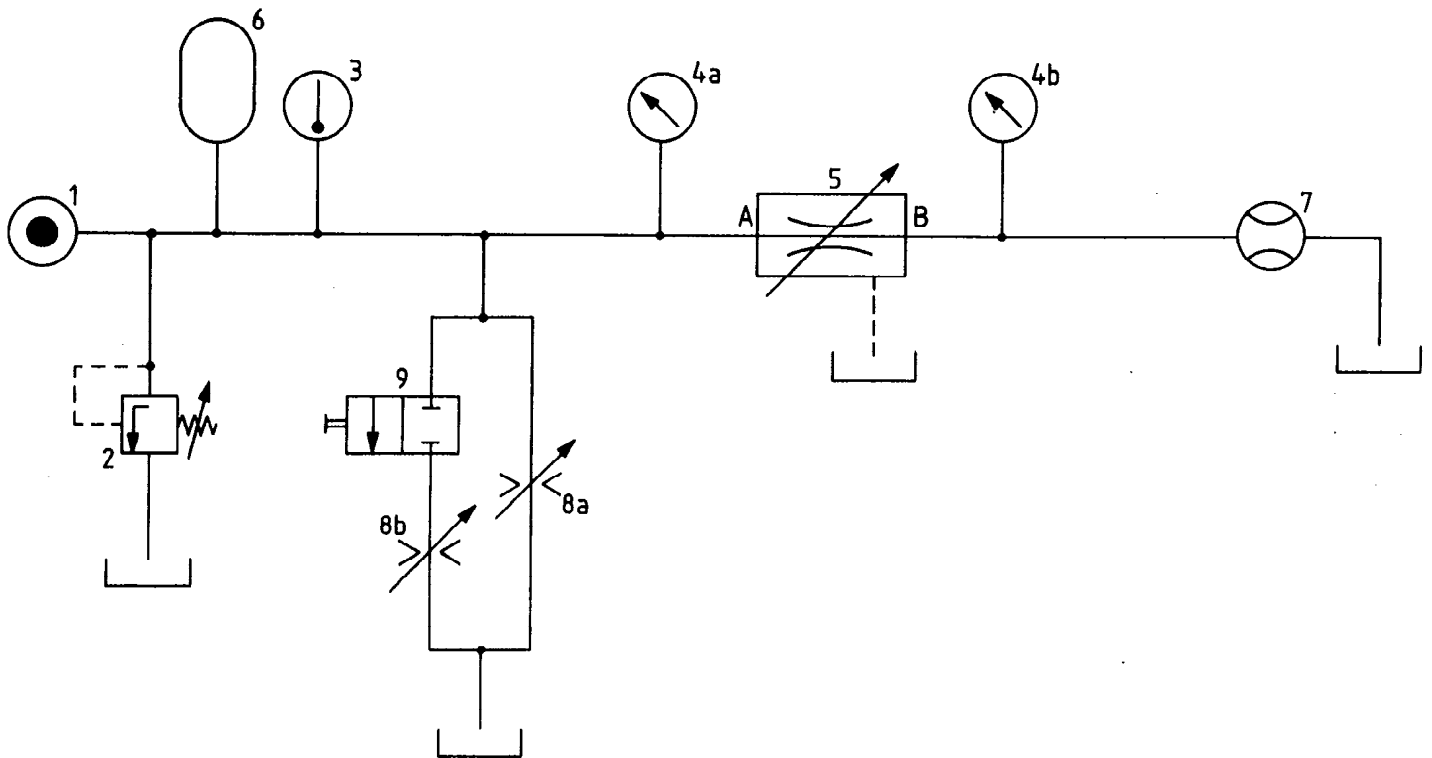
Key

- 1 Flow source
- 2 Pressure-relief valve
- 3 Temperature indicator
- 4a, 4b, 4c Pressure indicators
- 5 Valve being tested
- 6 Accumulator
- 7 Flowmeter
- 8a, 8b Variable sharp-edge orifices
- 9 Two-way valves

NOTES

- 1 The circuit between test valve 5 and loading valves 8a and 8b should be assembled from rigid piping and the fluid volume should be kept as small as possible.
- 2 The requirements for tapping point positions are given in clause 5.2.

Figure 11 – Test circuit for flow control valves (meter-out)



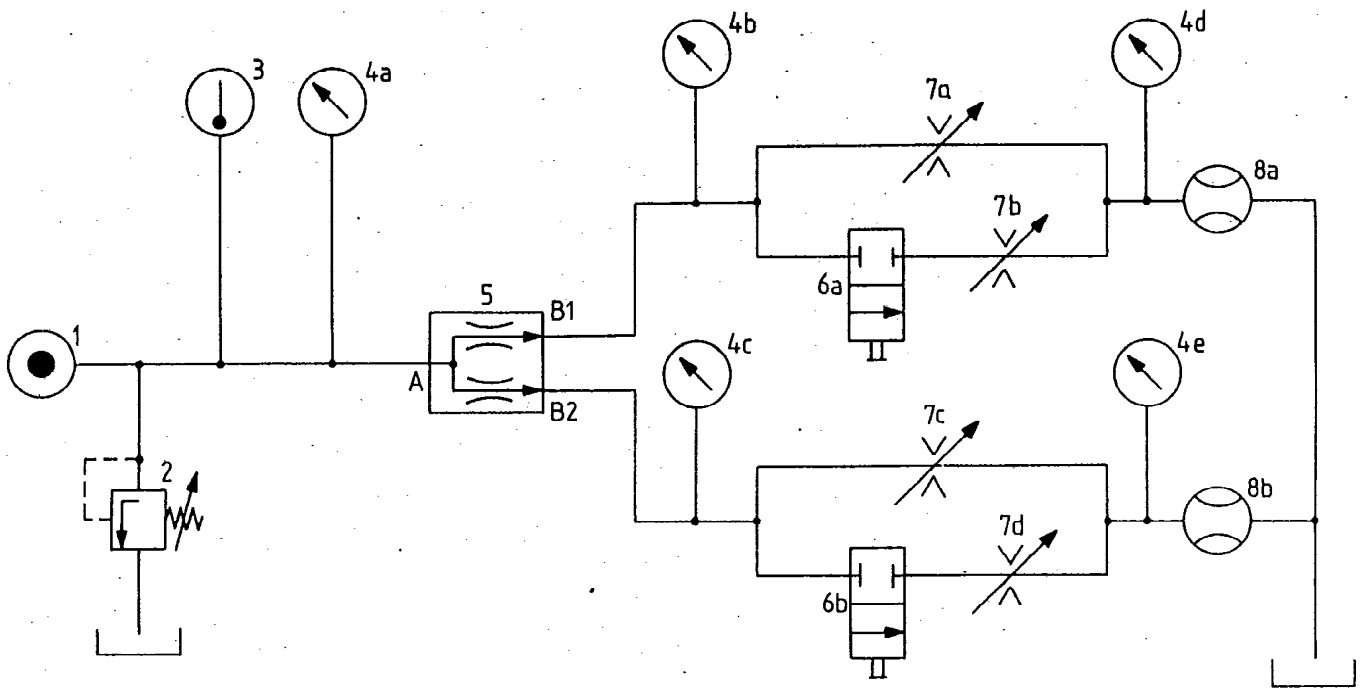
Key

- 1 Flow source
- 2 Pressure-relief valve
- 3 Temperature indicator
- 4a, 4b Pressure indicators
- 5 Valve being tested
- 6 Accumulator
- 7 Flowmeter
- 8a, 8b Variable sharp-edge orifices
- 9 Two-way valve

NOTES

- 1 The circuit between test valve 5 and loading valves 8a and 8b should be assembled from rigid piping and the fluid volume should be kept as small as possible.
- 2 The requirements for tapping point positions are given in clause 5.2.

Figure 12 — Test circuit for flow control valves (bleed-off)



Key

- 1 Flow source
- 2 Pressure-relief valve
- 3 Temperature indicator
- 4a to 4e Pressure indicators
- 5 Valve being tested
- 6a, 6b Two-way valves
- 7a to 7b Variable sharp-edge orifices
- 8a, 8b Flowmeter

Figure 13 — Test circuit for flow-dividing valves

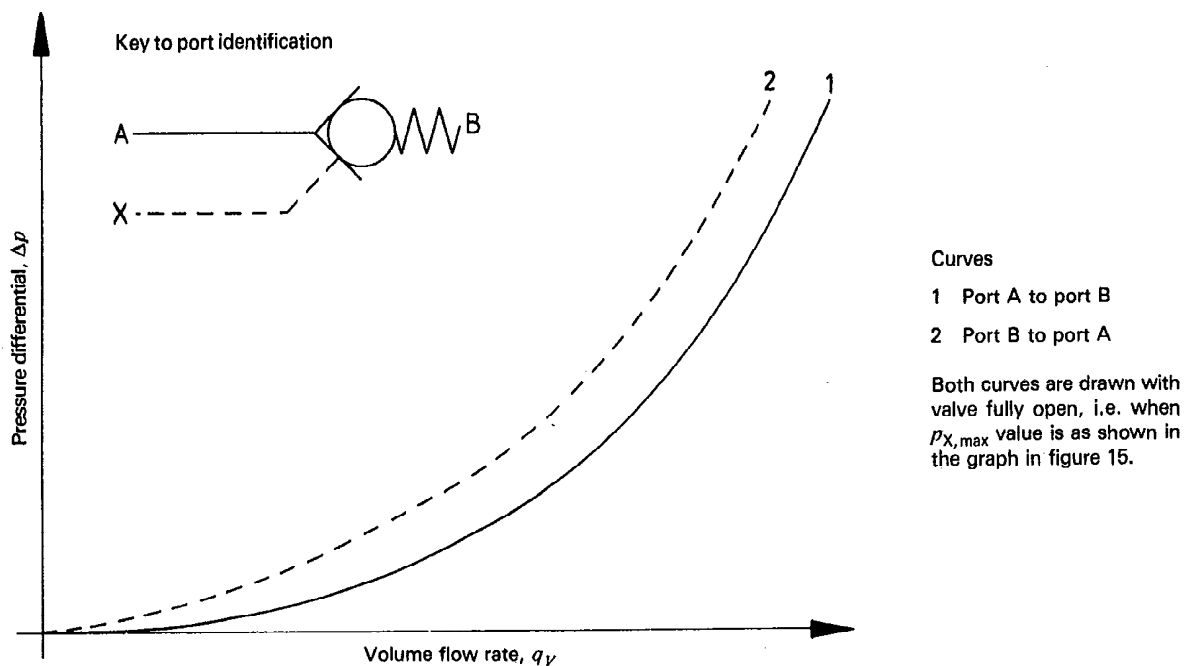


Figure 14 — Graphical representation of pressure/flow characteristics of pilot-pressure-operated non-return valves

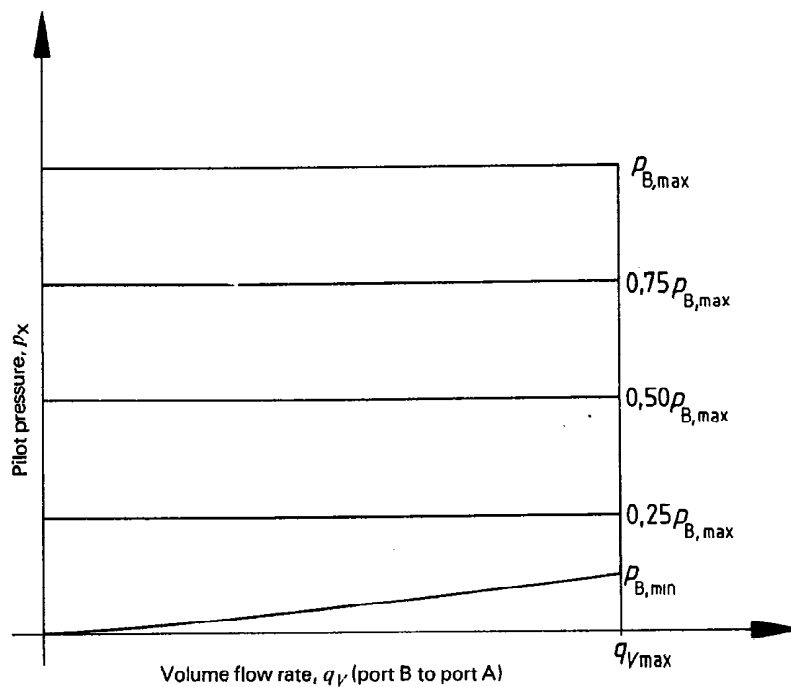


Figure 15 — Graphical representation of pilot pressure p_X permitting flow from port B to port A

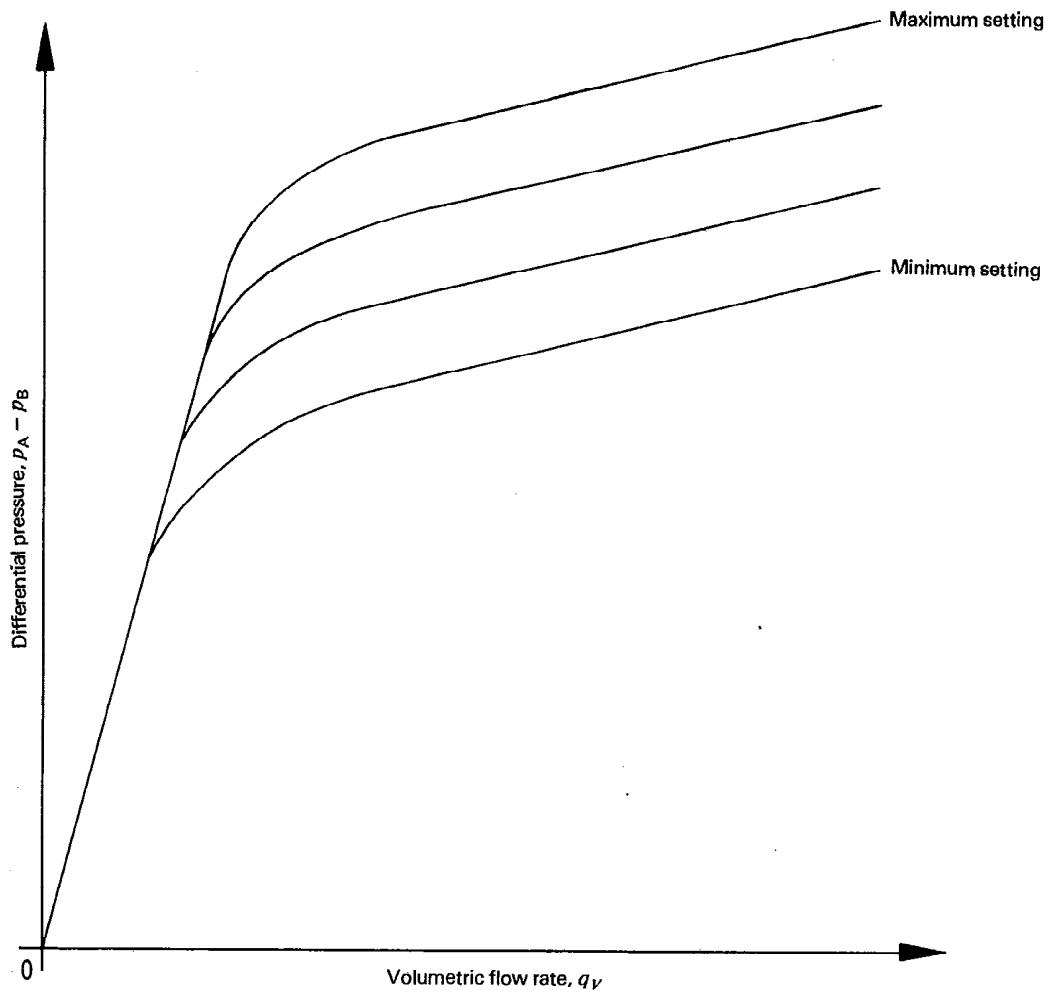


Figure 16 — Graphical representation of steady-state pressure/flow characteristics for pressure-relief valves

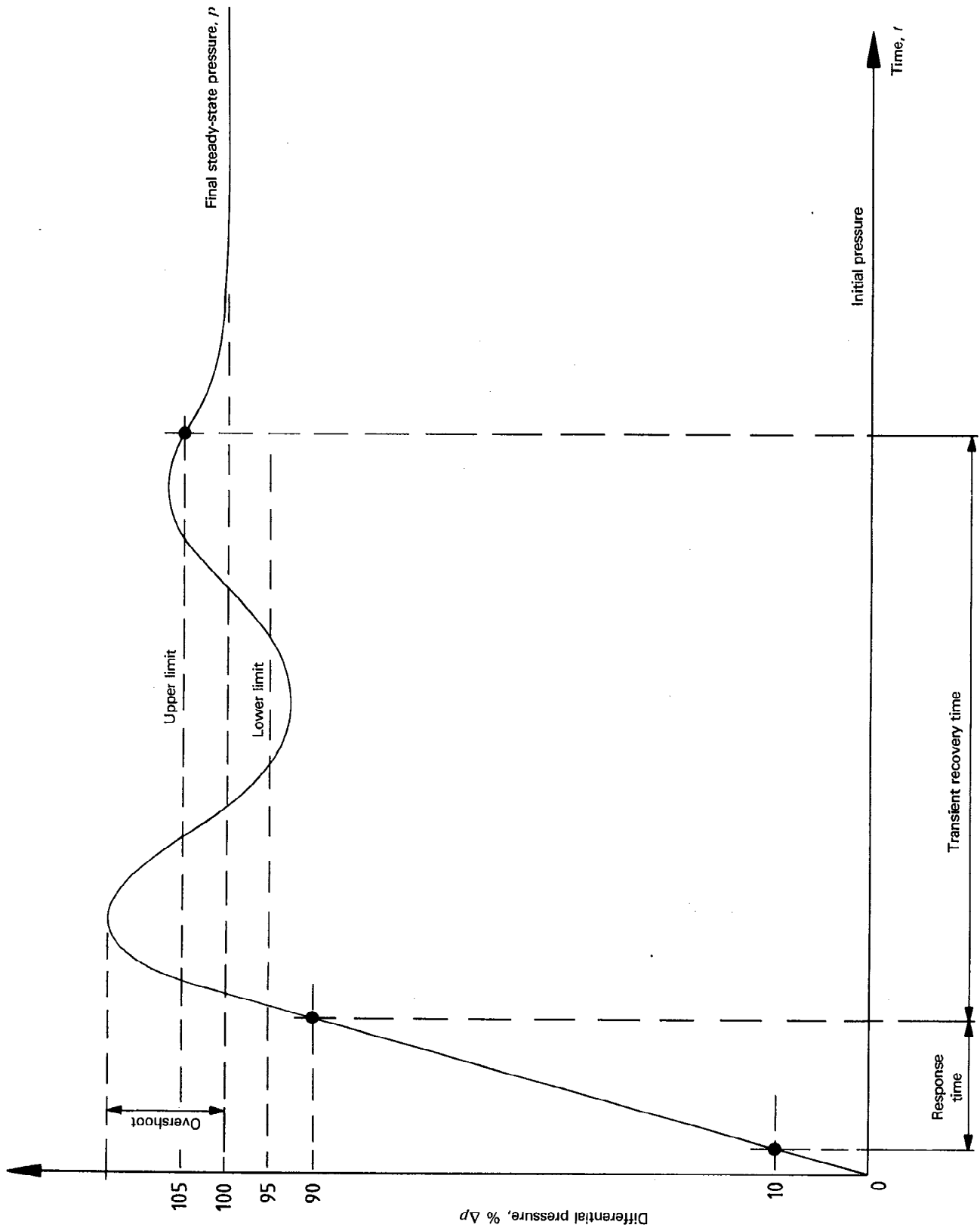


Figure 17 — Graphical representation of transient response of valve controlling pressure

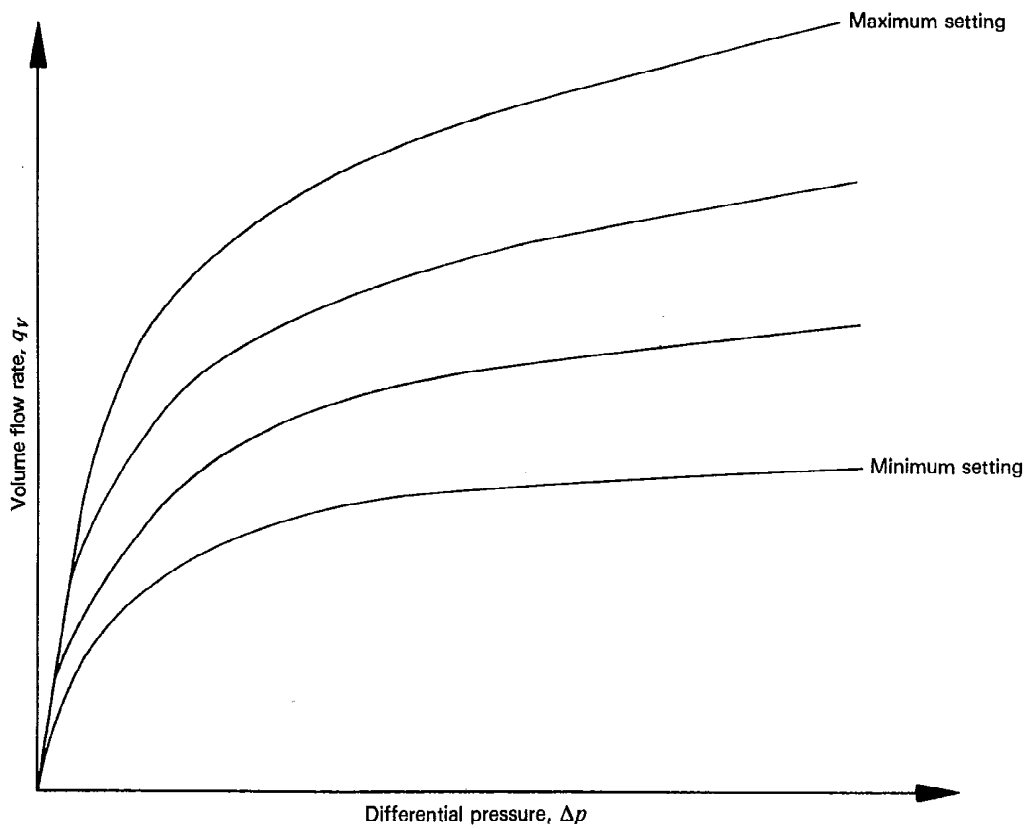


Figure 18 — Graphical representation of steady-state flow characteristics of a flow control valve

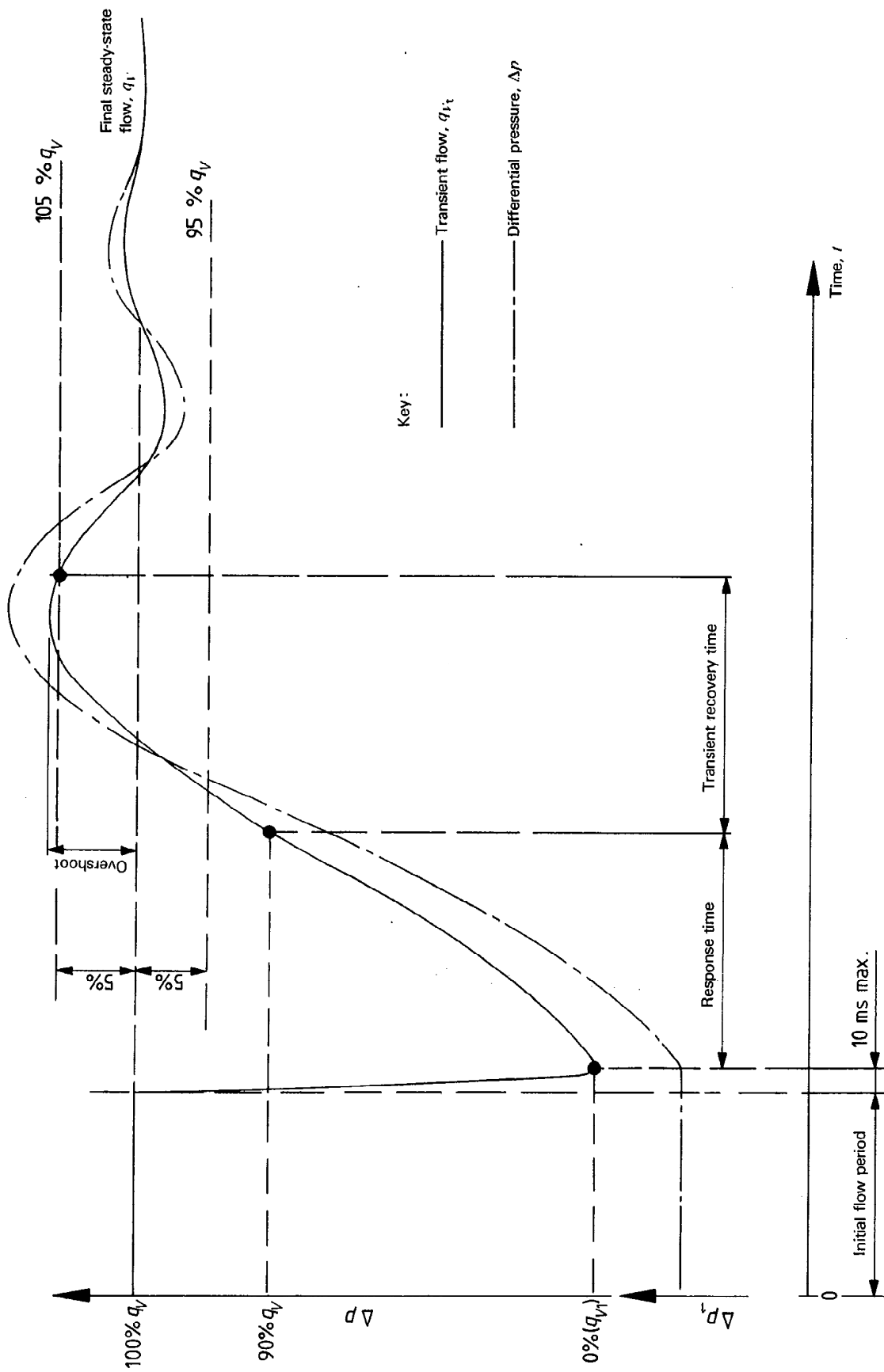


Figure 19 — Graphical representation of transient response of flow control valves

Annex A

Classes of measurement accuracy

(This annex forms part of this Standard.)

NOTE — The contents of this annex are under review and may be subject to amendment in the future.

A.1 Classes of measurement accuracy

Depending on the accuracy required, the tests shall be carried out to one of three classes of measurement accuracy, A, B or C, as agreed by the parties concerned.

NOTES

- 1 Classes A and B are intended for special cases when there is a need to have the performance more precisely defined.
- 2 Attention is drawn to the fact that class A and B tests require more accurate apparatus and methods, which increase the costs of such tests.

A.2 Errors

Any device or method shall be used which by calibration or comparison with International Standards has been demonstrated to be capable of measuring with systematic errors not exceeding the limits given in table 4.

NOTE — The percentage limits given in table 4 are of the value of the quantity being measured and not of the maximum values of the test or the maximum reading of the instrument.

Table 4 — Permissible systematic errors of measuring instruments as determined during calibration

Parameter of measuring instrument	Permissible systematic errors for classes of measurement accuracy		
	A	B	C
Flow rate, %	± 0,5	± 1,5	± 2,5
Pressures where $p < 200$ kPa gauge, kPa	± 2×10^3	± 6×10^3	± 10×10^3
Pressures where $p > 200$ kPa gauge, %	± 1	± 3	± 5
Temperature, K	± 0,5	± 1	± 2

Annex B

Use for practical units

(This annex does not form part of this Standard.)

The results of the tests, either in tabular or graphical form, may be presented using practical units as shown in table 5.

Table 5 — Practical units

Quantity	Symbol	SI unit as given in table 1	Practical unit
Nominal diameter of valve	D	m	mm
Force	F	N	N
Control element — linear displacement	L	m	mm
Control element — angular displacement	β	rad	degree
Volumetric flow rate	q_V	m ³ /s	l/min ¹⁾
Internal diameter of pipe	d	m	mm
Pressure, differential pressure	$p, \Delta p$	Pa	MPa (bar) ²⁾
Time	t	s	s, ms, min, h
Mass density of fluid	ρ	kg/m ³	kg/l ¹⁾
Kinematic viscosity	ν	m ² /s	mm ² /s (cSt)
Temperature	θ	°C	°C
Isentropic bulk modulus	K_s	Pa	N/mm ²
Volume	V	m ³	dm ³ (i.e. litre)

1) 1 l = 1 dm³

2) 1 bar = 10⁵ Pa = 10⁵ N/m²

Publications referred to

See national foreword.

BS 4062 : Part 2 : 1990 ISO 6403 : 1988

This British Standard, having been prepared under the direction of the Machinery and Components Standards Policy Committee, was published under the authority of the Board of BSI and comes into effect on 29 June 1990

© British Standards Institution, 1990

First published, as BS 4062, September 1966

First revision, as BS 4062 : Part 2 July 1982

Second revision June 1990

ISBN 0 580 17841 2

The following BSI references relate to the work on this standard:
Committee reference MCE/18 Draft for comment 85/79297 DC

British Standards Institution. Incorporated by Royal Charter, BSI is the independent national body for the preparation of British Standards. It is the UK member of the International Organization for Standardization and UK sponsor of the British National Committee of the International Electrotechnical Commission.

In addition to the preparation and promulgation of standards, BSI offers specialist services including the provision of information through the BSI Library and Standardline Database; Technical Help to Exporters; and other services. Advice can be obtained from the Enquiry Section, BSI, Milton Keynes MK14 6LE, telephone 0908 221166, telex 825777.

Copyright. Users of British Standards are reminded that copyright subsists in all BSI publications. No part of this publication may be reproduced in any form without the prior permission in writing of

BSI. This does not preclude the free use, in the course of implementing the standard, of necessary details such as symbols and size, type or grade designations. Enquiries should be addressed to the Publications Manager, BSI, Linford Wood, Milton Keynes MK14 6LE. The number for telephone enquiries is 0908 220022 and for telex 825777.

Contract requirements. A British Standard does not purport to include all the necessary provisions of a contract. Users of British Standards are responsible for their correct application.

Revision of British Standards. British Standards are revised, when necessary, by the issue either of amendments or of revised editions. It is important that users of British Standards should ascertain that they are in possession of the latest amendments or editions.

Automatic updating service. BSI provides an economic, individual and automatic standards updating service called **PLUS**. Details are available from BSI Enquiry Section at Milton Keynes, telephone 0908 221166, telex 825777.

Information on all BSI publications is in the *BSI Catalogue*, supplemented each month by *BSI News* which is available to subscribing members of BSI and gives details of new publications, revisions, amendments and withdrawn standards. Any person who, when making use of a British Standard, encounters an inaccuracy or ambiguity, is requested to notify BSI without delay in order that the matter may be investigated and appropriate action taken.

Committees responsible for this British Standard

The preparation of this British Standard was entrusted by the Machinery and Components Standards Policy Committee (MCE/-) to Technical Committee MCE/18, upon which the following bodies were represented:

Advanced Manufacturing Technology Research Institute
Association of British Mining Equipment Companies
Bath University Library
British Compressed Air Society
British Fluid Power Association
British Hydromechanics Research Association
British Steel Industry
British Telecommunications plc

Department of Trade and Industry (National Engineering Laboratory)
Electricity Supply Industry In England and Wales
Federation of Manufacturers of Construction Equipment and Cranes
Health and Safety Executive
Institution of Mechanical Engineers
Ministry of Defence

The following bodies were also represented in the drafting of the standard, through sub-committees and panels:

British Railways Board
Society of Motor Manufacturers and Traders Limited

Amendments issued since publication

Amd. No.	Date of issue	Text affected

British Standards Institution · 2 Park Street London W1A 2BS · Telephone 071-629 9000 · Telex 266933