

BS ISO 18471:2015



BSI Standards Publication

Agricultural irrigation equipment — Filters — Verification of filtration grade

bsi.

...making excellence a habit.™

National foreword

This British Standard is the UK implementation of ISO 18471:2015.

The UK participation in its preparation was entrusted to Technical Committee AGE/30, Irrigation and drainage equipment.

A list of organizations represented on this committee can be obtained on request to its secretary.

This publication does not purport to include all the necessary provisions of a contract. Users are responsible for its correct application.

© The British Standards Institution 2015.
Published by BSI Standards Limited 2015

ISBN 978 0 580 81113 5

ICS 65.060.35

Compliance with a British Standard cannot confer immunity from legal obligations.

This British Standard was published under the authority of the Standards Policy and Strategy Committee on 30 November 2015.

Amendments/corrigenda issued since publication

Date	Text affected
------	---------------

INTERNATIONAL
STANDARD

BS ISO 18471:2015

ISO
18471

First edition
2015-10-15

**Agricultural irrigation equipment —
Filters — Verification of filtration grade**

*Matériel agricole d'irrigation — Filtres — Vérification du grade de
filtration*



Reference number
ISO 18471:2015(E)

© ISO 2015



COPYRIGHT PROTECTED DOCUMENT

© ISO 2015, Published in Switzerland

All rights reserved. Unless otherwise specified, no part of this publication may be reproduced or utilized otherwise in any form or by any means, electronic or mechanical, including photocopying, or posting on the internet or an intranet, without prior written permission. Permission can be requested from either ISO at the address below or ISO's member body in the country of the requester.

ISO copyright office
Ch. de Blandonnet 8 • CP 401
CH-1214 Vernier, Geneva, Switzerland
Tel. +41 22 749 01 11
Fax +41 22 749 09 47
copyright@iso.org
www.iso.org

Contents

	Page
Foreword	iv
1 Scope	1
2 Normative references	1
3 Terms and definitions	1
4 Summary of the test method	2
5 CCM structure and operation	2
5.1 Construction	2
5.1.1 Sampler (1)	2
5.1.2 Control unit (2)	2
5.2 Mode of operation	2
6 CCM test screen characteristics	3
7 Accuracy of measurements	4
8 Test system layout	4
9 Test procedure	5
Bibliography	7

Foreword

ISO (the International Organization for Standardization) is a worldwide federation of national standards bodies (ISO member bodies). The work of preparing International Standards is normally carried out through ISO technical committees. Each member body interested in a subject for which a technical committee has been established has the right to be represented on that committee. International organizations, governmental and non-governmental, in liaison with ISO, also take part in the work. ISO collaborates closely with the International Electrotechnical Commission (IEC) on all matters of electrotechnical standardization.

The procedures used to develop this document and those intended for its further maintenance are described in the ISO/IEC Directives, Part 1. In particular the different approval criteria needed for the different types of ISO documents should be noted. This document was drafted in accordance with the editorial rules of the ISO/IEC Directives, Part 2 (see www.iso.org/directives).

Attention is drawn to the possibility that some of the elements of this document may be the subject of patent rights. ISO shall not be held responsible for identifying any or all such patent rights. Details of any patent rights identified during the development of the document will be in the Introduction and/or on the ISO list of patent declarations received (see www.iso.org/patents).

Any trade name used in this document is information given for the convenience of users and does not constitute an endorsement.

For an explanation on the meaning of ISO specific terms and expressions related to conformity assessment, as well as information about ISO's adherence to the WTO principles in the Technical Barriers to Trade (TBT) see the following URL: [Foreword - Supplementary information](#).

The committee responsible for this document is ISO/TC 23, *Tractors and machinery for agriculture and forestry*, Subcommittee SC 18, *Irrigation and drainage equipment and systems*.

Agricultural irrigation equipment — Filters — Verification of filtration grade

1 Scope

This International Standard specifies a test method for the verification of filtration grade of filters intended for operation in agricultural irrigation systems. It is intended to be used for verifying the filter manufacturer's declaration about the filtration grade of a specific filter.

This test method uses a Clogging Capacity Meter (CCM) device to compare the filtration grade of the filter under test against the filtration grade of a test filtration screen.

NOTE This test method may also be used by a filter manufacturer to determine the filtration grade.

2 Normative references

The following documents, in whole or in part, are normatively referenced in this document and are indispensable for its application. For dated references, only the edition cited applies. For undated references, the latest edition of the referenced document (including any amendments) applies.

ISO 9644, *Agricultural irrigation equipment — Pressure losses in irrigation valves — Test method*

3 Terms and definitions

For the purpose of this document, the following terms and definitions apply.

3.1

filtration grade

number, declared by the manufacturer, that represents the size of water passages in a filter and is related to its ability to stop particles

Note 1 to entry: The filtration grade is expressed in micrometres (μm , microns).

3.2

clogging capacity meter

CCM

device used for measuring the time to reach a specified pressure loss across a standard filter screen, at a constant flow rate

3.3

aperture width

distance between two adjacent parallel wires in a square-mesh wire cloth screen plain-weave

3.4

mesh count

number of apertures per unit of linear measure in a woven wire cloth or wire screen

[SOURCE: ISO 9045:1990, 3.2.8]

3.5

flow rate

volume of water flowing through a device per unit time

3.6 pressure loss

difference in pressure due to water flow between two specified points in a system or in part of a system

Note 1 to entry: It is expressed in pascals (Pa) according to ISO 80000-1, in kilopascals (kPa) or in bar.

4 Summary of the test method

Two CCM units, using identical test screens, are connected to the water mains, one upstream and one downstream of the filter under test.

Water at a flow rate of 10 l/min is passed through each CCM screen and the time required for each CCM to reach a predetermined pressure loss (0,5 bar) across its own screen is recorded.

The ratio between the two time periods, measured at the downstream and the upstream CCM units, is calculated. A ratio equal to or greater than five indicates that the filtration grade declared by the manufacturer is correct.

5 CCM structure and operation

5.1 Construction

The CCM device consists of two main parts (see [Figure 1](#)).

5.1.1 Sampler (1)

The sampler is the part of the CCM through which water used for testing flows. It includes the following:

- **screen housing** (3), capable of being opened and closed for cleaning and for easy replacement of the **filtering screen** (4);
- **flow rate regulator** (5), accurate to ± 2 %, limiting the flow rate to 10 l/min.

5.1.2 Control unit (2)

The control unit includes the following measuring instruments:

- **pressure gauge** (9) accurate to ± 1 %, measuring up to 10 bar;
- **differential pressure gauge**, digital or analog (10) accurate to ± 1 %;
- **count up digital timer** (6) with a resolution of 0,01 min, preferably starting automatically when the pressure reaches a pre-determined level;
- **timer start switch** (12);
- **timer reset button** (11), setting the timer back to zero;
- **tubes** (7 and 8) connecting the control unit to the sampler. Pressure tap construction shall be in accordance with ISO 9644.

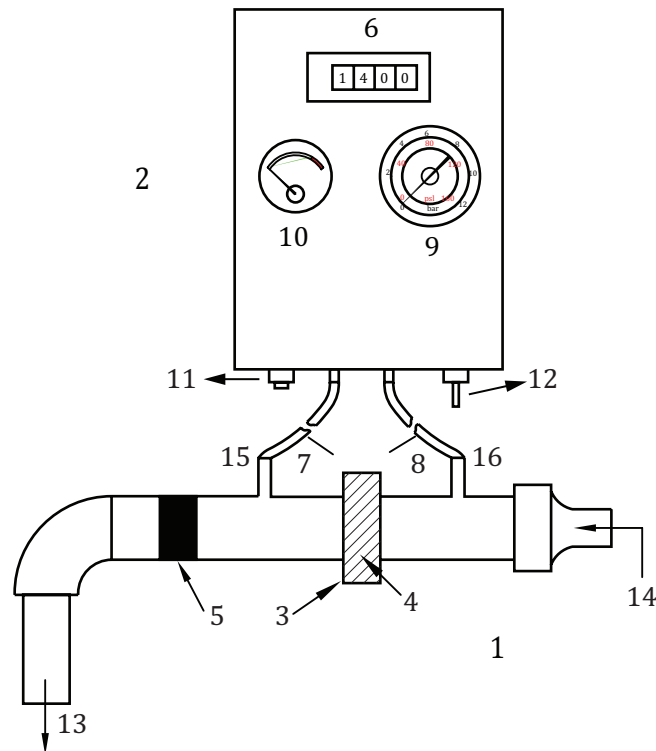
5.2 Mode of operation

5.2.1 Insert a “sealed” screen, same as that used for testing but that is covered and sealed by a thin plastic film into the screen housing. Apply an inlet pressure of $(1^{+0,2})$ bar. Make certain that no water is emerging from the CCM outlet.

5.2.2 Replace the “sealed” screen with a CCM test screen, having filtration grade equal to that declared by the manufacturer of the filter under test.

5.2.3 Set the timer to zero by pressing the reset button.

5.2.4 To begin the test, open the water inlet to the sampler and activate the timer start switch.



Key

- | | | | |
|---|------------------------|----|-----------------------------|
| 1 | sampler | 9 | pressure gauge |
| 2 | control unit | 10 | differential pressure gauge |
| 3 | screen housing | 11 | timer reset button |
| 4 | filtering screen | 12 | timer start switch |
| 5 | flow rate regulator | 13 | water outflow |
| 6 | count up digital timer | 14 | water inflow |
| 7 | pressure tube | 15 | low pressure |
| 8 | pressure tube | 16 | high pressure |

Figure 1 — CCM schematic construction

6 CCM test screen characteristics

The screens used in the CCM shall be made of 316 stainless steel and have plain weave of square mesh with the characteristics specified in [Table 1](#).

Table 1 — CCM test filter screens characteristics

Aperture width^a μm (micron)	Mesh count^a apertures/in	Wire diameter mm
60	250	0,04
80	200	0,05
100	140	0,08
120	120	0,09
140	100	0,11
150	120	0,065
165	105	0,076
180	94	0,09
200	88	0,09
250	62	0,16
300	50	0,20

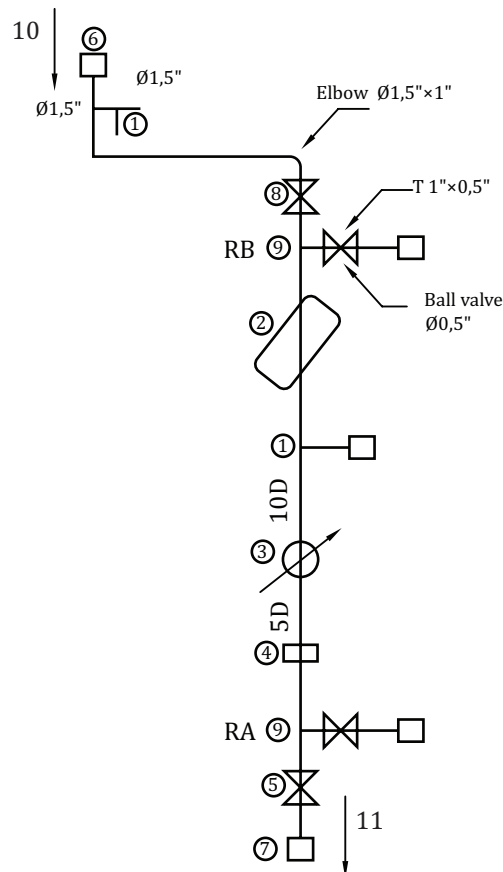
^a In case of a discrepancy between **Aperture width** and **Mesh count** data, the **Aperture width** takes precedence.

7 Accuracy of measurements

- **Pressure** shall be measured with an accuracy of ± 1 %.
- **Pressure loss** shall be measured with an accuracy of ± 1 %, using a differential pressure gauge.
- **Flow rate** shall be measured with an accuracy of ± 2 %.
- At the beginning of the test (see [9.2](#)), the flow rate shall not deviate by more than ± 2 % from the required flow rate.
- The difference in flow rate between the two CCM devices in the test system shall not exceed 4 %.

8 Test system layout

Prepare the test system as per [Figure 2](#).



Key

- | | | | |
|---|--|----|--|
| 1 | pressure point – data logger | 7 | connection union P.E. $\varnothing 32$ |
| 2 | filter to be tested $\varnothing 1''$ | 8 | ball valve $\varnothing 1''$ |
| 3 | water meter $\varnothing 1''$ | 9 | water checkpoint – CCM |
| 4 | flow regulator $\varnothing 1''$ | 10 | water inlet |
| 5 | pressure reg. valve $\varnothing 1''$ | 11 | water outlet |
| 6 | connection union P.E. $\varnothing 32$ | | |

Figure 2 — Test system layout

9 Test procedure

9.1 Adjust system inlet pressure to 4,0 bar, while water flow to the CCM units is blocked.

9.2 Allow water to flow through the test system. Adjust the flow rate through the tested filter to the mid-point of the flow rate range declared by the filter manufacturer. Then adjust the pressure at the system inlet to between 3,0 bar and 4,0 bar.

9.3 Record the pressure upstream and downstream of the filter and calculate the pressure loss across the clean filter.

9.4 Stop the water flow in the system. Replace the filter medium with a new, unused medium of the same type and characteristics.

9.5 Resume water flow in the system and open the valves to both CCM units.

- 9.6** Continuously monitor the increase in pressure loss across the tested filter and across each CCM unit.
- 9.7** Record the time required to reach a pressure loss of 0,5 bar in the upstream CCM (t_{up}) and in the downstream CCM (t_{down}). Calculate and take note of the t_{down}/t_{up} ratio.
- 9.8** Replace the screens at both CCMs.
- 9.9** If the pressure loss across the test filter exceeds the pressure loss recorded in the clean state by 0,5 bar (see [9.3](#)), abort the test.
- 9.10** Repeat [9.5](#) to [9.9](#) nine more times, then terminate the test.
- 9.11** Calculate the average of all recorded t_{down}/t_{up} ratios. If the result is equal to or greater than five, the filtration grade declared by the manufacturer is correct.

NOTE Consider the discontinuation of the test if a pressure loss of 0,5 bar is achieved in less than 30 s and if a pressure loss of 0,5 bar in the upstream CCM is not achieved within 60 min.

Bibliography

- [1] ISO 9045:1990, *Industrial screens and screening — Vocabulary*
- [2] ISO 80000-1, *Quantities and units — Part 1: General*

British Standards Institution (BSI)

BSI is the national body responsible for preparing British Standards and other standards-related publications, information and services.

BSI is incorporated by Royal Charter. British Standards and other standardization products are published by BSI Standards Limited.

About us

We bring together business, industry, government, consumers, innovators and others to shape their combined experience and expertise into standards-based solutions.

The knowledge embodied in our standards has been carefully assembled in a dependable format and refined through our open consultation process. Organizations of all sizes and across all sectors choose standards to help them achieve their goals.

Information on standards

We can provide you with the knowledge that your organization needs to succeed. Find out more about British Standards by visiting our website at bsigroup.com/standards or contacting our Customer Services team or Knowledge Centre.

Buying standards

You can buy and download PDF versions of BSI publications, including British and adopted European and international standards, through our website at bsigroup.com/shop, where hard copies can also be purchased.

If you need international and foreign standards from other Standards Development Organizations, hard copies can be ordered from our Customer Services team.

Subscriptions

Our range of subscription services are designed to make using standards easier for you. For further information on our subscription products go to bsigroup.com/subscriptions.

With **British Standards Online (BSOL)** you'll have instant access to over 55,000 British and adopted European and international standards from your desktop. It's available 24/7 and is refreshed daily so you'll always be up to date.

You can keep in touch with standards developments and receive substantial discounts on the purchase price of standards, both in single copy and subscription format, by becoming a **BSI Subscribing Member**.

PLUS is an updating service exclusive to BSI Subscribing Members. You will automatically receive the latest hard copy of your standards when they're revised or replaced.

To find out more about becoming a BSI Subscribing Member and the benefits of membership, please visit bsigroup.com/shop.

With a **Multi-User Network Licence (MUNL)** you are able to host standards publications on your intranet. Licences can cover as few or as many users as you wish. With updates supplied as soon as they're available, you can be sure your documentation is current. For further information, email bsmusales@bsigroup.com.

BSI Group Headquarters

389 Chiswick High Road London W4 4AL UK

Revisions

Our British Standards and other publications are updated by amendment or revision.

We continually improve the quality of our products and services to benefit your business. If you find an inaccuracy or ambiguity within a British Standard or other BSI publication please inform the Knowledge Centre.

Copyright

All the data, software and documentation set out in all British Standards and other BSI publications are the property of and copyrighted by BSI, or some person or entity that owns copyright in the information used (such as the international standardization bodies) and has formally licensed such information to BSI for commercial publication and use. Except as permitted under the Copyright, Designs and Patents Act 1988 no extract may be reproduced, stored in a retrieval system or transmitted in any form or by any means – electronic, photocopying, recording or otherwise – without prior written permission from BSI. Details and advice can be obtained from the Copyright & Licensing Department.

Useful Contacts:

Customer Services

Tel: +44 845 086 9001

Email (orders): orders@bsigroup.com

Email (enquiries): cservices@bsigroup.com

Subscriptions

Tel: +44 845 086 9001

Email: subscriptions@bsigroup.com

Knowledge Centre

Tel: +44 20 8996 7004

Email: knowledgecentre@bsigroup.com

Copyright & Licensing

Tel: +44 20 8996 7070

Email: copyright@bsigroup.com



...making excellence a habit.™