

BS ISO 17901-1:2015



BSI Standards Publication

# Optics and photonics — Holography

Part 1: Methods of measuring diffraction efficiency and associated optical characteristics of holograms

**bsi.**

...making excellence a habit.™

**National foreword**

This British Standard is the UK implementation of ISO 17901-1:2015.

The UK participation in its preparation was entrusted to Technical Committee CPW/172, Optics and Photonics.

A list of organizations represented on this committee can be obtained on request to its secretary.

This publication does not purport to include all the necessary provisions of a contract. Users are responsible for its correct application.

© The British Standards Institution 2015.  
Published by BSI Standards Limited 2015

ISBN 978 0 580 81127 2

ICS 31.020

**Compliance with a British Standard cannot confer immunity from legal obligations.**

This British Standard was published under the authority of the Standards Policy and Strategy Committee on 31 July 2015.

**Amendments/corrigenda issued since publication**

Date	Text affected
------	---------------

---

---

---

**Optics and photonics — Holography —**  
**Part 1:**  
**Methods of measuring diffraction**  
**efficiency and associated optical**  
**characteristics of holograms**

*Optique et photonique — Holographie —*

*Partie 1: Méthodes de mesurage de l'efficacité de diffraction et*  
*caractéristiques optiques associées aux hologrammes*





## **COPYRIGHT PROTECTED DOCUMENT**

© ISO 2015, Published in Switzerland

All rights reserved. Unless otherwise specified, no part of this publication may be reproduced or utilized otherwise in any form or by any means, electronic or mechanical, including photocopying, or posting on the internet or an intranet, without prior written permission. Permission can be requested from either ISO at the address below or ISO's member body in the country of the requester.

ISO copyright office  
Ch. de Blandonnet 8 • CP 401  
CH-1214 Vernier, Geneva, Switzerland  
Tel. +41 22 749 01 11  
Fax +41 22 749 09 47  
copyright@iso.org  
www.iso.org

# Contents

Page

<b>Foreword</b> .....	<b>iv</b>
<b>Introduction</b> .....	<b>v</b>
<b>1 Scope</b> .....	<b>1</b>
<b>2 Normative references</b> .....	<b>1</b>
<b>3 Terms and definitions</b> .....	<b>1</b>
<b>4 Symbols and abbreviated terms</b> .....	<b>3</b>
<b>5 Principles</b> .....	<b>3</b>
<b>6 Measurement methods</b> .....	<b>3</b>
6.1 General.....	3
6.2 Definition of the coordinate system.....	4
6.3 Hologram measurement environment.....	4
6.4 Measurement device and measures.....	5
6.5 Diffraction efficiency measurement method.....	5
6.5.1 General.....	5
6.5.2 Absolute diffraction efficiency measurement method.....	6
6.5.3 Relative diffraction efficiency measurement method.....	7
6.5.4 Spectral diffraction efficiency by transmittance measurement for volume holograms.....	8
6.5.5 Spectral diffraction efficiency by reflectance measurement for volume holograms.....	9
6.6 Angular selectivity measurement method.....	11
6.7 Wavelength selectivity measurement method.....	11
<b>7 Description of measurement results</b> .....	<b>12</b>
7.1 General.....	12
7.2 Description of the diffraction efficiency measurement results.....	12
7.3 Description of the angular selectivity measurement results.....	12
7.4 Description of the wavelength selectivity measurement method.....	12
<b>Bibliography</b> .....	<b>14</b>

## Foreword

ISO (the International Organization for Standardization) is a worldwide federation of national standards bodies (ISO member bodies). The work of preparing International Standards is normally carried out through ISO technical committees. Each member body interested in a subject for which a technical committee has been established has the right to be represented on that committee. International organizations, governmental and non-governmental, in liaison with ISO, also take part in the work. ISO collaborates closely with the International Electrotechnical Commission (IEC) on all matters of electrotechnical standardization.

The procedures used to develop this document and those intended for its further maintenance are described in the ISO/IEC Directives, Part 1. In particular the different approval criteria needed for the different types of ISO documents should be noted. This document was drafted in accordance with the editorial rules of the ISO/IEC Directives, Part 2 (see [www.iso.org/directives](http://www.iso.org/directives)).

Attention is drawn to the possibility that some of the elements of this document may be the subject of patent rights. ISO shall not be held responsible for identifying any or all such patent rights. Details of any patent rights identified during the development of the document will be in the Introduction and/or on the ISO list of patent declarations received (see [www.iso.org/patents](http://www.iso.org/patents)).

Any trade name used in this document is information given for the convenience of users and does not constitute an endorsement.

For an explanation on the meaning of ISO specific terms and expressions related to conformity assessment, as well as information about ISO's adherence to the WTO principles in the Technical Barriers to Trade (TBT) see the following URL: [Foreword - Supplementary information](#).

The committee responsible for this document is ISO/TC 172, *Optics and Photonics*, Subcommittee SC 9, *Electro-optical systems*.

ISO 17901 consists of the following parts, under the general title *Optics and photonics — Holography*:

- *Part 1: Methods of measuring diffraction efficiency and associated optical characteristics of holograms*
- *Part 2: Methods for measurement of hologram recording characteristics*

## Introduction

The aim of this part of ISO 17901 is to specify the terms related to holograms and basic measurement methods to characterize them.

A hologram is an optical device utilizing interference and diffraction phenomena and is characterized differently from optical devices based on reflection, refraction, and scattering. By exploiting the characteristics of holograms, they have been successfully applied in numerous applications such as displays, metrology, and anti-counterfeit security.

The expanded market in holography has generated a need to agree on basic terms and definitions for holograms and measurement methods and this part of ISO 17901 aims to satisfy that need.





# Optics and photonics — Holography —

## Part 1:

# Methods of measuring diffraction efficiency and associated optical characteristics of holograms

## 1 Scope

This part of ISO 17901 specifies the terms related to optical characteristics of holograms, the method to measure their diffraction efficiency, and the angular and wavelength selectivity measurement methods. These measurement methods are applicable to any type of hologram if the hologram yields a simple diffraction pattern, which means the reconstructed wave can be clearly separated from other diffracted and non-diffracted waves. In other words, holograms that yield complex diffraction patterns are excluded. There are no restrictions on the materials used to form the holograms.

## 2 Normative references

The following documents, in whole or in part, are normatively referenced in this document and are indispensable for its application. For dated references, only the edition cited applies. For undated references, the latest edition of the referenced document (including any amendments) applies.

ISO 15902, *Optics and photonics — Diffractive optics — Vocabulary*

## 3 Terms and definitions

For the purposes of this document, the terms and definitions given in ISO 15902 and the following apply.

### 3.1

#### **hologram**

interference pattern formed between the wave emitted from the object and its coherent reference wave, which is recorded in the recording material

Note 1 to entry: The holograms also include those formed through embossed copying of surface relief or those recording the periodic structure spatially by etching or engraving.

### 3.2

#### **object wave**

#### **object beam**

wave emitted from an object and entering the recording material in the course of recording the hologram

### 3.3

#### **reference wave**

#### **reference beam**

wave entering the recording material while forming a certain angle with the object wave in the course of recording the hologram

### 3.4

#### **illuminating wave**

#### **illuminating beam**

wave allowed to enter the hologram when reconstructing the image from the hologram

**3.5**  
**reconstructed wave**  
**reconstructed beam**

wave diffracted by the hologram

Note 1 to entry: Generally, this term indicates either the +first-order diffracted wave or –first-order diffracted wave but can indicate second or higher order diffracted waves.

**3.6**  
**specular wave**

perfectly reflected light waves, to be distinguished from diffuse reflection

**3.7**  
**transmission hologram**

hologram using transmission reconstructed waves

Note 1 to entry: A hologram recording the interference pattern between objects and reference waves from the same side of the recording material is a transmission hologram.

**3.8**  
**reflection hologram**

hologram using reflection reconstructed waves

Note 1 to entry: A reflection hologram recording the interference pattern between an object wave and the reference wave from the mutually opposite sides of the recording material is generally a volume reflection hologram and is also called a Lippmann or Lippmann Denisyuk hologram. Of the *surface relief hologram* (3.13), the hologram using the wave reflected from the relief surface is a surface relief reflection hologram.

**3.9**  
**phase hologram**

hologram having a spatially-periodic phase modulation structure

**3.10**  
**amplitude hologram**

hologram having a spatially-periodic amplitude modulation structure

**3.11**  
**volume hologram**

hologram causing Bragg diffraction

Note 1 to entry: A hologram having a sinusoidal refractive-index distribution is one whose hologram recording layer is sufficiently thicker than the interval of interference fringes. Holograms characterized by a Q-value  $Q \gg 1$  are considered to be volume holograms.

**3.12**  
**plane hologram**

hologram causing Raman-Nath diffraction

Note 1 to entry: This type of hologram is the one whose hologram recording thickness is sufficiently smaller than the interval of interference fringes. Holograms characterized by a Q-value  $Q < 1$  are considered to be plane holograms.

**3.13**  
**surface relief hologram**

hologram recording the interference pattern as relief structure in the surface of the hologram recording material

**3.14**  
**Q-value**

in the periodic structure based on the sinusoidal refractive-index distribution, the value of Q defines the thickness of the diffraction grating and is determined by the following formula:

$$Q = \frac{2\pi\lambda T}{\bar{n}d^2}$$

where

- $T$  is the thickness of hologram ( $\mu\text{m}$ );
- $\lambda$  is the wavelength in air ( $\mu\text{m}$ );
- $d$  is the interval of interference fringe ( $\mu\text{m}$ );
- $\bar{n}$  is the mean refractive-index of hologram

Note 1 to entry: This value is used to classify the hologram into the volume hologram and the plain hologram. Note that this value is applicable only to the cyclic structure based on the sinusoidal refractive-index distribution.

### 3.15

#### **diffraction efficiency**

<of the hologram> ratio of the radiant flux of the reconstructed wave relative to the radiant flux of the illuminating wave

Note 1 to entry: The diffraction efficiency of holograms is generally expressed as a percentage (%).

### 3.16

#### **angular selectivity**

<of the hologram> dependence of the radiant flux of the reconstructed wave on the angle of incidence of the illuminating wave if the hologram is reproduced while using a monochromatic illuminating wave

### 3.17

#### **wavelength selectivity**

<of the hologram> dependence of the radiant flux of the reconstructed wave on the wavelength of the illuminating wave if the hologram is reproduced while keeping the angle of incidence of illuminating wave constant

## 4 Symbols and abbreviated terms

$\eta$  Diffraction efficiency (%)

## 5 Principles

The diffraction efficiency is determined by measuring the radiant flux of the reconstructed wave or the zero-order diffracted wave while the illuminating wave enters the hologram. The absolute diffraction efficiency, which is the ratio of the radiant flux of reconstructed wave relative to that of the illuminating wave, is the basis of the measurement. The relative diffraction efficiency, which is the ratio of the radiant flux of the reconstructed wave relative to that of the sum of the radiant fluxes of all diffraction orders, might be important for certain applications. There is also a simplified method to determine the diffraction efficiency from the spectral distribution of either the transmittance or reflectance of the hologram. Finally, the angle selectivity of the hologram is determined from diffraction efficiency as a function of the angle of incidence and the wavelength selectivity is determined from the diffraction efficiency as a function of the wavelength.

## 6 Measurement methods

### 6.1 General

This part of ISO 17901 covers the measurement of the diffraction efficiency as well as the angle selectivity and wavelength selectivity as described below. Since for multiple purposes there is more than one definition of diffraction efficiency, its measurement shall be made according to the method appropriate to the purpose.

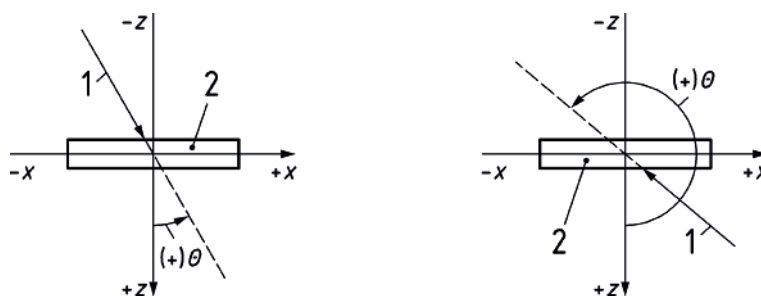
When the hologram to be measured is formed through the two-flux interference of reference waves, they are assumed to be plane waves. If the reference waves are not plane waves, the method can be applied by using either the absolute diffraction efficiency or relative diffraction efficiency. If this applies, the fact shall be cited clearly in the report.

This part of ISO 17901 is applicable to holograms formed by the method other than two-flux interference of laser beams, such as the embossed hologram formed by transferring and reproducing the interference pattern, the hologram formed by the electron beam lithography system, and all other etching or engraving methods. If any alternative method is used, that fact shall be cited clearly in the report.

## 6.2 Definition of the coordinate system

The axis of coordinates and the angle of waves are defined as follows.

- The recording material (or hologram) plane shall be the  $xy$ -plane while the axis vertical to the plane shall be the  $z$ -axis.
- For the  $z$ -axis, the advance direction of the object or reconstructed wave shall be positive.
- As shown in [Figure 1](#), the angle of incidence  $\theta$  [degree ( $^\circ$ ) or rad] is formed between the  $z$ -axis in the positive direction and the extension of the incident wave. The positive  $\theta$ -symbol indicates a counter-clockwise direction.



a) Wave advancing in the  $+z$  direction

b) Wave advancing in the  $-z$  direction

### Key

- incident light wave
- recording material or hologram

**Figure 1 — How to establish the coordinate system and wave angle in measurement of optical characteristics of holograms**

## 6.3 Hologram measurement environment

Measurement of the diffraction efficiency shall be made inside a dark room at room temperature and in atmosphere with stable relative humidity (or under conditions designed to prevent entry of stray light into the detector).

## 6.4 Measurement device and measures

The measurement shall use the following equipment and measures, as required, according to the measurement method.

a) Light source

The light source for laser should ensure high temporal stability of the output (for example,  $\pm 5\%$  or less in output fluctuation over 30 min). The white-light illuminating source, if used, should provide a continuous spectrum over the measuring wavelength range concerned.

b) Mirror

The surface accuracy of mirrors should be sufficiently high (for example, better than  $1/10$  of the appropriate wavelength).

c) Holder

The holder should be able to move within a movable range equivalent approximately to the test piece size while holding the hologram.

d) Detector

The detector should have sufficient dynamic range and response relative to the intensity to be measured and should have been calibrated.

e) Monochromator

The monochromator should have a spectral resolution of 1 nm or less within the wavelength range to be measured.

f) Integrating sphere

Spherical optical component with the inner wall covered by a light diffusing material of high reflectance which can collect beams and homogenize them through spatial integration.

NOTE A typical coating material used for integrating spheres is barium sulfate.

## 6.5 Diffraction efficiency measurement method

### 6.5.1 General

In the strict sense of the word, diffraction efficiency is the absolute diffraction efficiency as measured according to the method described in [6.5.2](#).

However, the absolute diffraction efficiency might not be appropriate to represent the characteristics of certain recording materials that cause loss of light due to the hologram's reflection, scattering, absorption, and contraction properties. In such a case, it is recommended to apply the method described in [6.5.3](#).

In the case of volume holograms with expansion or contraction in the recording material, measurement of the diffraction efficiency might result in the lower R-value because of failure to meet the Bragg condition when the angle of incident [degree ( $^{\circ}$ ) or rad] or the wavelength of the illuminating wave is equal to that of the reference wave. In such an event, the transmission hologram requires adjustment of the angle of incidence of the illuminating wave, as required, for measurement of the diffraction efficiency. For the volume reflection hologram, either the spectral diffraction efficiency by transmittance measurement as described in [6.5.4](#) or the spectral diffraction efficiency by reflectance measurement as described in [6.5.5](#) can be used.

Generally, these four types of diffraction efficiency have different values for the same hologram so that the diffraction efficiency shall be used separately by identifying which measurement method has been applied to the efficiency concerned.

Oblique incidence of the illuminating or reconstructed wave to the detector might result in failure of correct measurement of the radiant flux because of reflection on the detector surface. In the case of measurement radiant flux, the detector should be set in such a manner that the illuminating or reconstructed wave can enter in the approximate vertical direction.

### 6.5.2 Absolute diffraction efficiency measurement method

The absolute diffraction efficiency ( $\eta$ ) is defined as the ratio (%) of the radiant flux of the reconstructed wave ( $L_1$ ) relative to that of the illuminating wave ( $L_0$ ).

The measurement method includes the following procedure:

- a) As shown in [Figure 2](#), the illuminating wave from the light source is entered into the hologram held by the test piece holder. Adjustment shall be made so that the hologram's illuminated area by the illuminating wave becomes equal to or smaller than the hologram area. To adjust the illuminated area, an aperture may be inserted into the optical path of illuminating wave to restrict the illuminated area, if necessary.

NOTE It is generally recommended to use, as the illuminating wave, one of two radiant fluxes in the optical system to record the hologram. The light source commonly used is a laser. When an aperture has been provided, it is possible to evaluate the diffraction efficiency distribution within the hologram plane by moving the hologram up/down and left/right.

- b) The radiant flux of the illuminating wave is measured using the calibrated detector A. The radiant flux of the reconstructed wave is measured using the calibrated detector B in the state without the hologram as shown in [Figure 2](#). These measurements are used to determine the diffraction efficiency from Formula (1):

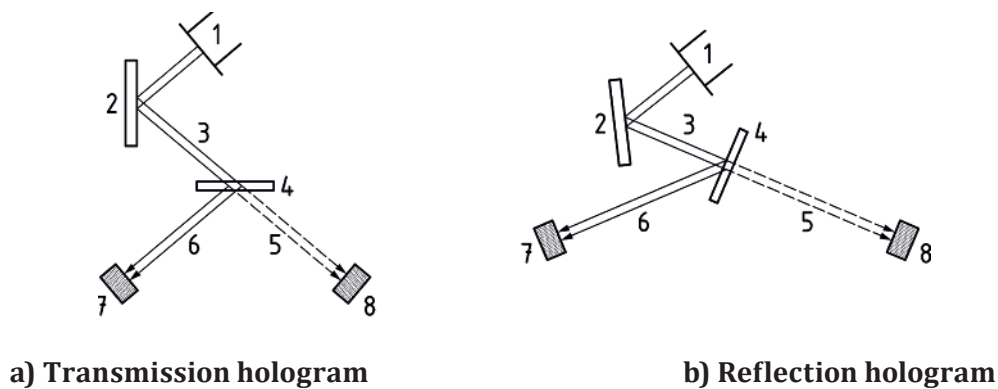
NOTE For measurement of the radiant flux with the detector, due care is to be taken to ensure that all of the waves to be measured enter the detector.

$$\eta = \frac{L_1}{L_0} \times 100 \quad (1)$$

where

$L_0$  is the radiant flux of the illuminating wave (mW);

$L_1$  is the radiant flux of the reconstructed wave (mW).



**Key**

- |   |                             |   |  |
|---|-----------------------------|---|--|
| 1 | aperture                    | 5 | illuminating wave when the hologram has been removed |
| 2 | mirror                      | 6 | reconstructed wave                                   |
| 3 | illuminating wave           | 7 | detector B   |
| 4 | hologram placed on a holder | 8 | detector A   |

**Figure 2 — Example of diffraction efficiency measurement method using a recording optical system**

**6.5.3 Relative diffraction efficiency measurement method**

The relative diffraction efficiency ( $\eta$ ) is the diffraction efficiency that takes into account the loss of light caused by the material characteristics and is defined as the ratio (%) of the radiant flux of reconstructed wave ( $L_1$ ) relative to the sum of radiant fluxes of the diffracted waves of all orders ( $L_{all}$ ).

The measurement method includes the following procedure.

- a) The optical system shown in [Figure 2](#) shall be used similarly to the case as described in [6.5.2 a\)](#).
- b)  $L_{all}$  is determined by calculating the sum of measurements of the radiant fluxes of the reconstructed wave and those of diffracted waves of all orders using the calibrated detector B. By dividing the radiant flux of reconstructed wave ( $L_1$ ) by the value thus obtained, the relative diffraction efficiency is determined from Formula (2):

NOTE For measurement of the radiant flux with the detector, due care is to be taken to ensure that all of the waves to be measured enter the detector.

$$\eta = \frac{L_1}{L_{all}} \times 100 \quad (2)$$

where

$L_{all}$  is the sum of radiant fluxes of diffracted wave of all orders (mW);

$L_1$  is the radiant flux of the reconstructed wave (mW).

- c) If it is difficult to measure the radiant flux of the diffracted wave of all the orders, the following alternative method may be employed. Namely, the measurement shall be made using the radiant flux of the transmitted wave (for transmission holograms) or using the radiant flux of the specular wave (for reflection surface relief hologram). In both cases, the measurement shall be made for the portion where hologram recording has not been made. The measured value shall be treated as  $L_{all}$ . In this case, the fact that the alternative method has been used shall be clearly cited.

### 6.5.4 Spectral diffraction efficiency by transmittance measurement for volume holograms

The spectral diffraction efficiency by transmittance is defined as a ratio of the decrement (%) of the transmitted zero-order wave due to the recording material transmittance properties, relative to the transmittance (%) of the recording material assumed when the hologram has not been recorded and while taking the decrement of the transmitted zero-order wave as the diffracted wave.

The measurement method includes the following procedure.

- a) Attach the volume hologram to the optical system containing a monochromator.

NOTE [Figure 3 a\)](#) shows the optical system layout plan for measurement of the transmission hologram. The optical layout plan for measurement of the reflection hologram is as shown in [Figure 3 b\)](#). The monochromator is placed at position A or B in the layout plan.

- b) The beam from the light source is transformed into parallel beams by means of a collimating lens, and these parallel beams are allowed to enter the hologram as illuminating waves.

NOTE Generally, the light source to be used is the white-light illuminating source.

- c) The measurement wavelength is sequentially changed and the intensity of transmitted wave at each wavelength is measured with the detector which results in the distribution of spectral diffraction efficiency by transmittance as shown in [Figure 4](#).

- d) The value for “ $T_a$ ” and “ $T_b$ ” is read from the graph of the spectral diffraction sensitivity, as represented in [Figure 4](#), and the spectral diffraction efficiency by transmittance (%) is determined from Formula (3):

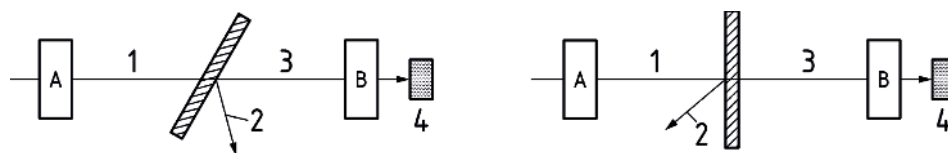
NOTE The volume reflection hologram is highly selective in terms of the wavelength. The spectral diffraction efficiency by transmittance that can determine the diffraction efficiency from this measurement has been determined by taking into account reflection and absorption of the hologram and will have the value close to the relative diffraction efficiency.

$$\eta = \frac{(T_a - T_b)}{T_a} \times 100 \quad (3)$$

where

$T_a$  is the transmittance (%) of recording material at the wavelength where the transmittance shown in [Figure 4](#) becomes minimum, which is assumed when the hologram has not been recorded;

$T_b$  is the transmittance (%) of the hologram at the wavelength where the transmittance becomes minimum.



a) For volume transmission hologram

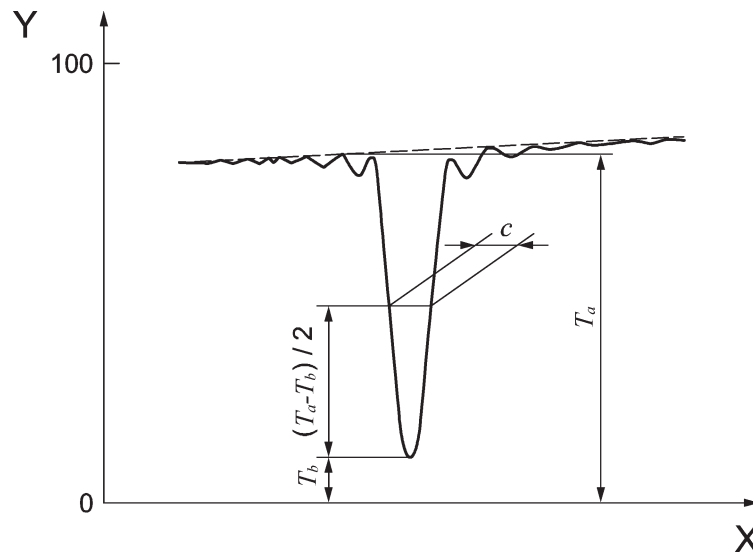
b) For volume reflection hologram

#### Key

- |   |                                      |   |                  |
|---|--------------------------------------|---|------------------|
| 1 | incident wave (illuminating wave)    | 3 | transmitted wave |
| 2 | diffracted wave (reconstructed wave) | 4 | detector         |

**Figure 3 — Diffraction efficiency measurement method using a monochromator**





**Key**

- X wavelength ( $\mu\text{m}$ )
- Y transmittance (%)
- $T_a$  transmittance (%) of recording material at the wavelength where the transmittance becomes minimum, which is assumed when the hologram has not been recorded
- $T_b$  transmittance (%) of the hologram at the wavelength where the transmittance becomes minimum
- $c$  full width at half maximum

**Figure 4 — Distribution of the spectral diffraction efficiency by transmittance of zero-order transmitted wave**

**6.5.5 Spectral diffraction efficiency by reflectance measurement for volume holograms**

The spectral diffraction efficiency by reflectance is defined as the difference between the maximum value (%) of spectral reflectance of the incident light and the reflectance (%) of recording material assumed when the hologram has not been recorded.

The spectral diffraction efficiency by reflectance measurement method is applicable only to the volume reflection hologram and includes the following procedure.

- a) As shown in [Figure 5](#), the volume reflection hologram is attached to the measurement system in which the monochromator is combined with the integrating sphere.
- b) The beam dispersed by the monochromator is transformed into parallel beams by means of a collimating lens and these parallel beams are allowed to enter the reflection hologram as illuminating waves.
- c) The measurement wavelength of the illuminating wave is sequentially changed and the intensity of the reflected wave at each wavelength is detected with the integrating sphere, which results in the distribution of spectral diffraction efficiency by reflectance as shown in [Figure 6](#).

NOTE Generally, the light source to be used is the white-light illuminating source.

- d) The values for " $R_a$ " and " $R_b$ " are read from the graph of the distribution of spectral diffraction efficiency by reflectance, as represented in [Figure 6](#) and the spectral diffraction efficiency by reflectance (%) is determined from Formula (4):

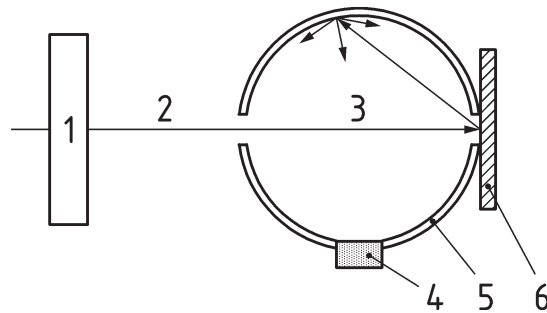
NOTE The volume reflection hologram is highly selective in terms of wavelength, so that the diffraction efficiency can be determined from this measurement. The value of reflectance at 100 % is to be calibrated using a standard white board. The diffraction efficiency of Formula (4) will have the value close to the absolute diffraction efficiency.

$$\eta = R_b - R_a \quad (4)$$

where

$R_a$  is the reflectance (%) of recording material at the wavelength where the reflectance becomes minimum, which is assumed when the hologram has not been recorded (see [Figure 6](#));

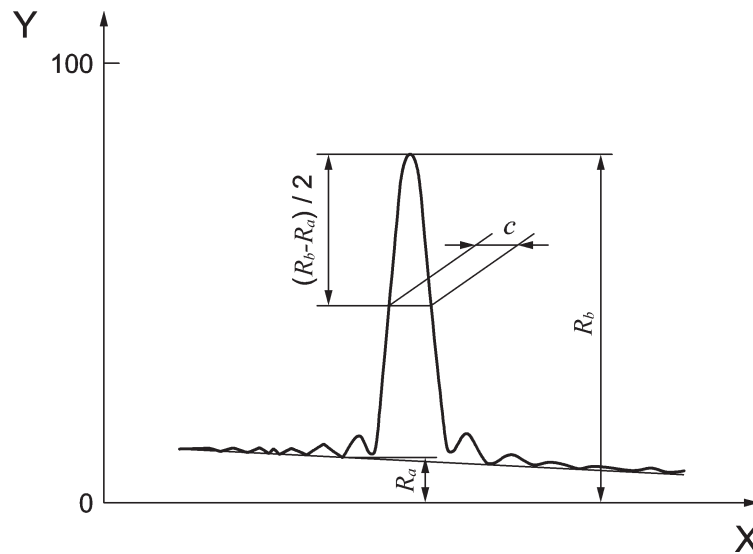
$R_b$  is the reflectance (%) of hologram at the wavelength where the reflectance becomes the maximum (see [Figure 6](#)).



**Key**

- |   |                                      |   |                            |
|---|--------------------------------------|---|----------------------------|
| 1 | monochromator                        | 4 | detector                   |
| 2 | incident wave (illuminating wave)    | 5 | integrating sphere         |
| 3 | diffracted wave (reconstructed wave) | 6 | volume reflection hologram |

**Figure 5 — Spectral diffraction efficiency by reflectance measurement method using the monochromator and integrating sphere**



**Key**

- X wavelength ( $\mu\text{m}$ )
- Y reflectance (%)
- $R_a$  reflectance (%) of recording material at the wavelength where the reflectance becomes minimum, which is assumed when the hologram has not been recorded
- $R_b$  reflectance (%) of hologram at the wavelength where the reflectance becomes the maximum
- $c$  full width at half maximum

**Figure 6 — Distribution of spectral diffraction efficiency by reflectance**

## 6.6 Angular selectivity measurement method

The angular selectivity measurement of holograms includes the following procedure.

- a) By establishing the wavelength of illuminating wave adequately and while changing the incident angle [degree ( $^\circ$ ) or rad] relative to the hologram at a small angular step (for example,  $\pi/180$  (rad) step), the diffraction efficiency is measured according to the either [6.5.2](#) or [6.5.3](#).
- b) The diffraction efficiency values relative to the illuminating wave incident angle [degree ( $^\circ$ ) or rad] are plotted to draw a graph and the incident angle at which the diffraction efficiency becomes the maximum and the full width at half maximum (angular space of two incident angles at which the diffraction efficiency becomes 1/2 of the maximum value) are read from this graph.

**NOTE** This graph enables evaluation of the angular selectivity. The hologram's angular selectivity represents the width (wide or narrow) of the incident angle range of illuminating wave to reproduce the image by hologram. When the angle range for image reproduction is relatively narrow, the "angular selectivity" is said to be "high". When this angle range is relatively wide, the "angular selectivity" is said to be "low."

## 6.7 Wavelength selectivity measurement method

The hologram's wavelength selectivity measurement method includes the following procedure.

- a) The incident angle of the illuminating wave is determined for the sake of convenience. Either the distribution of the spectral transmittance of [Figure 4](#) is obtained according to [6.5.4](#) or the distribution of spectral reflectance of [Figure 6](#) is obtained according to [6.5.5](#). Alternatively, the graph representing the dependence of diffraction ratio on the wavelength may be plotted by measuring the diffraction efficiency for multiple wavelengths according to [6.5.2](#) or [6.5.3](#).
- b) From the graph representing the dependence of the diffraction ratio on the wavelength, the wavelength at which the diffraction efficiency becomes the maximum and the half-value width are

determined. For the distribution of the spectral transmittance, the full width at half maximum is given by the interval of two wavelengths, which is equivalent to 1/2 of the sum of transmittance at the wavelength at which the transmittance becomes the minimum and the transmittance of recording material assumed when the hologram has not been recorded. In the case of the spectral diffraction efficiency by reflectance measurement spectral reflectance efficiency, this is given by the interval of two wavelengths, which is equivalent to 1/2 of the sum of the reflectance at the wavelength at which the reflectance becomes the maximum and the reflectance of recording material assumed when the hologram has not been recorded. When the absolute or relative diffraction efficiency has been used, the full width at half maximum can be obtained from the interval of two wavelengths, which is equivalent to 1/2 of the maximum value of diffraction efficiency in the graph plotted in a) above to represent the dependence of diffraction ratio on the wavelength.

**NOTE** The wavelength selectivity of hologram represents the width (wide, narrow) of the wavelength range in which the image can be reproduced by the hologram. A relatively narrow wavelength range for reproduction of the image is referred to as "high in wavelength selectivity." A relatively wide wavelength range is referred to as "low in wavelength selectivity." The wavelength selectivity is a factor governing the sharpness of reproduced image and the colour reproducibility when the white light is used as illuminating wave.

## 7 Description of measurement results

### 7.1 General

The result of measurement on the hologram diffraction efficiency obtained according to 6.5 shall be described according to 7.3.

Description of the result of measurement obtained according to 6.6 and 6.7 is optional.

In addition to the measurement results on the basis of this part of ISO 17901, the forming procedure for the hologram concerned and the conditions as specified in 6.2 shall also be described.

### 7.2 Description of the diffraction efficiency measurement results

- a) The diffraction efficiency shall be the numerical value expressed in percentage.
- b) For description of the diffraction efficiency, the following information shall also be described additionally:
  - 1) measurement method (one or more) according to 6.5 (6.5.2 to 6.5.5);
  - 2) incident angle [degree (°) or rad] of illuminating wave during measurement of the diffraction efficiency;
  - 3) wavelength of the illuminating wave (in the case of 6.5.2 or 6.5.3).

### 7.3 Description of the angular selectivity measurement results

- a) The angular selectivity shall be represented by both or either of the graph plotted on the basis of measurements according to 6.6 (the plot of diffraction efficiency relative to the incident angle of illuminating wave) and/or the numerical value of both peak incident angle [degree (°) or rad] and peak half-value width read from the graph.
- b) For description of the angular selectivity, the following information shall also be described additionally:
  - 1) measurement method (one or more) according to 6.5 (6.5.2 to 6.5.3);
  - 2) wavelength (µm) of illuminating wave during measurement of the diffraction efficiency.

### 7.4 Description of the wavelength selectivity measurement method

- a) The wavelength selectivity shall be represented by both or either of the graph plotted on the basis of measurements according to 6.7 (the plot of diffraction efficiency relative to the wavelength of illuminating wave) and/or the numerical value of both peak wavelength and peak half-value width read from the graph.
- b) For description of the wavelength selectivity, the following information shall also be described additionally:
- 1) measurement method (one or more) according to 6.5 (6.5.2 to 6.5.3);
  - 2) incident angle [degree (°) or rad] of illuminating wave during measurement of the diffraction efficiency.

**Table 1 — List of reporting items**

Item	Information to be described	Necessity of entry
(a) Diffraction efficiency (%)	<p>a) Diffraction efficiency value (%)</p> <p>NOTE When the diffraction efficiency has been measured by adjusting the incident angle of illuminating wave as required, the maximum measurement of diffraction efficiency is normally described as the diffraction efficiency of the measured object.</p> <p>b) Diffraction efficiency measurement method (one or more of methods as described in 6.5.2 to 6.5.5)</p> <p>c) Incident angle [degree (°) or rad] of illuminating wave during measurement of diffracted wave</p> <p>d) Wavelength (μm) of illuminating wave (when the diffraction efficiency measurement method is as described in either 6.5.2 or 6.5.3.)</p> <p>e) Where the diffraction efficiency has polarization dependence, the state of the polarization of illuminating wave</p>	Mandatory
(b) Angular selectivity	<p>a) Both or either of the graph plotted on the basis of measurements (the plot of diffraction efficiency relative to the incident angle of illuminating wave) and/or the numerical value (rad) of both peak incident angle and full width at half maximum read from the graph</p> <p>b) Diffraction efficiency measurement method (one or more of methods as described in 6.5.2 to 6.5.5)</p> <p>c) Wavelength (μm) of the illuminating wave during measurement of the diffraction efficiency</p>	Optional
(c) Wavelength selectivity	<p>a) Both or either of the graph plotted on the basis of measurements (the plot of diffraction efficiency relative to the wavelength of illuminating wave) and/or the numerical value (μm) of both peak wavelength and full width at half maximum read from the graph</p> <p>b) Diffraction efficient measurement method (one or more of methods as described in 6.5.2 to 6.5.5)</p> <p>c) Incident angle [degree (°) or radian] of illuminating wave during measurement of diffraction efficiency</p>	Optional

NOTE If the information is common to listed items, the description may not be made while identifying the reference relationship.

## Bibliography

- [1] ISO 17901-2, *Optics and photonics — Holography — Part 2: Methods for measurement of hologram recording characteristics*









# British Standards Institution (BSI)

BSI is the national body responsible for preparing British Standards and other standards-related publications, information and services.

BSI is incorporated by Royal Charter. British Standards and other standardization products are published by BSI Standards Limited.

## About us

We bring together business, industry, government, consumers, innovators and others to shape their combined experience and expertise into standards-based solutions.

The knowledge embodied in our standards has been carefully assembled in a dependable format and refined through our open consultation process. Organizations of all sizes and across all sectors choose standards to help them achieve their goals.

## Information on standards

We can provide you with the knowledge that your organization needs to succeed. Find out more about British Standards by visiting our website at [bsigroup.com/standards](http://bsigroup.com/standards) or contacting our Customer Services team or Knowledge Centre.

## Buying standards

You can buy and download PDF versions of BSI publications, including British and adopted European and international standards, through our website at [bsigroup.com/shop](http://bsigroup.com/shop), where hard copies can also be purchased.

If you need international and foreign standards from other Standards Development Organizations, hard copies can be ordered from our Customer Services team.

## Subscriptions

Our range of subscription services are designed to make using standards easier for you. For further information on our subscription products go to [bsigroup.com/subscriptions](http://bsigroup.com/subscriptions).

With **British Standards Online (BSOL)** you'll have instant access to over 55,000 British and adopted European and international standards from your desktop. It's available 24/7 and is refreshed daily so you'll always be up to date.

You can keep in touch with standards developments and receive substantial discounts on the purchase price of standards, both in single copy and subscription format, by becoming a **BSI Subscribing Member**.

**PLUS** is an updating service exclusive to BSI Subscribing Members. You will automatically receive the latest hard copy of your standards when they're revised or replaced.

To find out more about becoming a BSI Subscribing Member and the benefits of membership, please visit [bsigroup.com/shop](http://bsigroup.com/shop).

With a **Multi-User Network Licence (MUNL)** you are able to host standards publications on your intranet. Licences can cover as few or as many users as you wish. With updates supplied as soon as they're available, you can be sure your documentation is current. For further information, email [bsmusales@bsigroup.com](mailto:bsmusales@bsigroup.com).

## BSI Group Headquarters

389 Chiswick High Road London W4 4AL UK

## Revisions

Our British Standards and other publications are updated by amendment or revision.

We continually improve the quality of our products and services to benefit your business. If you find an inaccuracy or ambiguity within a British Standard or other BSI publication please inform the Knowledge Centre.

## Copyright

All the data, software and documentation set out in all British Standards and other BSI publications are the property of and copyrighted by BSI, or some person or entity that owns copyright in the information used (such as the international standardization bodies) and has formally licensed such information to BSI for commercial publication and use. Except as permitted under the Copyright, Designs and Patents Act 1988 no extract may be reproduced, stored in a retrieval system or transmitted in any form or by any means – electronic, photocopying, recording or otherwise – without prior written permission from BSI. Details and advice can be obtained from the Copyright & Licensing Department.

## Useful Contacts:

### Customer Services

**Tel:** +44 845 086 9001

**Email (orders):** [orders@bsigroup.com](mailto:orders@bsigroup.com)

**Email (enquiries):** [cservices@bsigroup.com](mailto:cservices@bsigroup.com)

### Subscriptions

**Tel:** +44 845 086 9001

**Email:** [subscriptions@bsigroup.com](mailto:subscriptions@bsigroup.com)

### Knowledge Centre

**Tel:** +44 20 8996 7004

**Email:** [knowledgecentre@bsigroup.com](mailto:knowledgecentre@bsigroup.com)

### Copyright & Licensing

**Tel:** +44 20 8996 7070

**Email:** [copyright@bsigroup.com](mailto:copyright@bsigroup.com)



...making excellence a habit.™