

BS ISO 17293-1:2014



BSI Standards Publication

# Surface active agents — Determination of chloroacetic acid (chloroacetate) in surfactants

Part 1: HPLC method

**bsi.**

...making excellence a habit.™

**National foreword**

This British Standard is the UK implementation of ISO 17293-1:2014.

The UK participation in its preparation was entrusted to Technical Committee CII/34, Methods of test for surface active agents.

A list of organizations represented on this committee can be obtained on request to its secretary.

This publication does not purport to include all the necessary provisions of a contract. Users are responsible for its correct application.

© The British Standards Institution 2014. Published by BSI Standards Limited 2014

ISBN 978 0 580 76268 0

ICS 71.100.40

**Compliance with a British Standard cannot confer immunity from legal obligations.**

This British Standard was published under the authority of the Standards Policy and Strategy Committee on 31 March 2014.

**Amendments issued since publication**

Date	Text affected
------	---------------

---

---

---

**Surface active agents — Determination  
of chloroacetic acid (chloroacetate) in  
surfactants —**

**Part 1:  
HPLC method**

*Agents de surface — Détermination de l'acide chloroacétique  
(chloroacétate) dans les agents tensioactifs —*

*Partie 1: Méthode CLHP*





**COPYRIGHT PROTECTED DOCUMENT**

© ISO 2014

All rights reserved. Unless otherwise specified, no part of this publication may be reproduced or utilized otherwise in any form or by any means, electronic or mechanical, including photocopying, or posting on the internet or an intranet, without prior written permission. Permission can be requested from either ISO at the address below or ISO's member body in the country of the requester.

ISO copyright office  
Case postale 56 • CH-1211 Geneva 20  
Tel. + 41 22 749 01 11  
Fax + 41 22 749 09 47  
E-mail [copyright@iso.org](mailto:copyright@iso.org)  
Web [www.iso.org](http://www.iso.org)

Published in Switzerland

# Contents

Page

<b>Foreword</b> .....	<b>iv</b>
<b>1 Scope</b> .....	<b>1</b>
<b>2 Normative references</b> .....	<b>1</b>
<b>3 Principle</b> .....	<b>1</b>
<b>4 Reagents</b> .....	<b>1</b>
4.1 General.....	1
<b>5 Apparatus</b> .....	<b>2</b>
<b>6 Procedures</b> .....	<b>2</b>
6.1 HPLC conditions.....	2
6.2 Calibration.....	3
6.3 Sampling and analysis.....	3
<b>7 Results and calculation</b> .....	<b>3</b>
7.1 General.....	3
7.2 The content of monochloroacetic acid.....	4
7.3 The content of dichloroacetic acid.....	4
<b>8 Precision</b> .....	<b>4</b>
8.1 Repeatability limit.....	4
8.2 Reproducibility limit.....	4
<b>9 Test report</b> .....	<b>4</b>
<b>Annex A (informative) Preliminary treatment of betaine sample</b> .....	<b>6</b>
<b>Annex B (informative) Typical chromatogram</b> .....	<b>8</b>

## Foreword

ISO (the International Organization for Standardization) is a worldwide federation of national standards bodies (ISO member bodies). The work of preparing International Standards is normally carried out through ISO technical committees. Each member body interested in a subject for which a technical committee has been established has the right to be represented on that committee. International organizations, governmental and non-governmental, in liaison with ISO, also take part in the work. ISO collaborates closely with the International Electrotechnical Commission (IEC) on all matters of electrotechnical standardization.

The procedures used to develop this document and those intended for its further maintenance are described in the ISO/IEC Directives, Part 1. In particular the different approval criteria needed for the different types of ISO documents should be noted. This document was drafted in accordance with the editorial rules of the ISO/IEC Directives, Part 2 (see [www.iso.org/directives](http://www.iso.org/directives)).

Attention is drawn to the possibility that some of the elements of this document may be the subject of patent rights. ISO shall not be held responsible for identifying any or all such patent rights. Details of any patent rights identified during the development of the document will be in the Introduction and/or on the ISO list of patent declarations received (see [www.iso.org/patents](http://www.iso.org/patents)).

Any trade name used in this document is information given for the convenience of users and does not constitute an endorsement.

For an explanation on the meaning of ISO specific terms and expressions related to conformity assessment, as well as information about ISO's adherence to the WTO principles in the Technical Barriers to Trade (TBT) see the following URL: Foreword - Supplementary information

The committee responsible for this document is ISO/TC 91, *Surface active agents*.

ISO 17293 consists of the following parts, under the general title *Surface active agents — Determination of chloroacetic acid (chloroacetate) in surfactants*:

- *Part 1: HPLC method*
- *Part 2: Ionic chromatographic method*

# Surface active agents — Determination of chloroacetic acid (chloroacetate) in surfactants —

## Part 1: HPLC method

### 1 Scope

This part of ISO 17293 specifies a method for the determination of monochloroacetic acid (monochloroacetate) and dichloroacetic acid (dichloroacetate) in surfactants by HPLC method.

The method applies for anionic surfactants such as alkyl (phenyl) ethoxylated carboxylate (AEC) or amphoteric surfactants such as alkyl imidazoline carboxylate, alkyl dimethyl betaine, and fatty acetyl propyl dimethyl betaine.

The limit of detection (LOD) is  $\leq 0,3 \mu\text{g/ml}$  for monochloroacetic acid and  $\leq 0,2 \mu\text{g/ml}$  for dichloroacetic acid; the limit of quantification (LOQ) is  $\leq 1,0 \mu\text{g/ml}$  for monochloroacetic acid and  $\leq 0,75 \mu\text{g/ml}$  for dichloroacetic acid (using a standard solution).

The LOD, at 5 g of sample weight, is  $\leq 6 \text{ mg/kg}$  for monochloroacetic acid and  $\leq 4 \text{ mg/kg}$  for dichloroacetic acid; and the LOQ is  $\leq 20 \text{ mg/kg}$  for monochloroacetic acid and  $\leq 15 \text{ mg/kg}$  for dichloroacetic acid.

### 2 Normative references

The following documents, in whole or in part, are normatively referenced in this document and are indispensable for its application. For dated references, only the edition cited applies. For undated references, the latest edition of the referenced document (including any amendments) applies.

ISO 607, *Surface active agents and detergents — Methods of sample division*

ISO 3696, *Water for analytical laboratory use — Specification and test methods*

ISO 5725-2, *Accuracy (trueness and precision) of measurement methods and results — Part 2: Basic method for the determination of repeatability and reproducibility of a standard measurement method*

### 3 Principle

The sample is dissolved in the mobile phase in order to analyse by high performance liquid chromatography (HPLC). After injection, it flows through a  $\text{C}_8$ -bonded silicone gel column. The monochloroacetic acid (monochloroacetate) and dichloroacetic acid (dichloroacetate) are separated in the column and detected by an UV detector.

The contents of monochloroacetic acid and dichloroacetic acid in the sample are achieved by external calibration method.

### 4 Reagents

#### 4.1 General

During the analysis, use only reagents of recognized analytical grade and the water used shall conform to grade 1 in accordance with ISO 3696, unless otherwise specified.

- 4.2 **Monochloroacetic acid (ClCH<sub>2</sub>COOH)**, purity > 99 % (w/w).
- 4.3 **Dichloroacetic acid (Cl<sub>2</sub>CHCOOH)**, purity > 99 % (w/w).
- 4.4 **Acetonitrile (CH<sub>3</sub>CN) HPLC grade**, filtered before use with filter unit (5.7).
- 4.5 **Phosphoric acid (H<sub>3</sub>PO<sub>4</sub>)**.
- 4.6 **Hydrochloric acid (HCl)**.
- 4.7 **Hydrochloric acid solution, 1:1 (V/V)**.

Add to about 10 ml of hydrochloric acid (4.6) and 10 ml of water in portions. Mix well.

## 5 Apparatus

Use usual laboratory apparatus and, in particular, the following.

- 5.1 **HPLC instrument**, equipped with pump and a high-resolution UV detector or photodiode array detector, with the noise and the drift of baseline at 254 nm <  $2 \times 10^{-5}$  AU/s (blank cell) and at 254 nm <  $1 \times 10^{-3}$  AU/h (blank cell, after stabilizing for 60 min), respectively.
- 5.2 **HPLC column: C<sub>8</sub>-bonded phase silicone gel (particle size 5 µm)**, 250 mm × 4,6 mm (ID), pH range from 1 to 8, or equivalent.
- 5.3 **Filter syringe**, of capacity 2 ml or 5 ml.
- 5.4 **Injection syringe**, of capacity 25 µl.
- 5.5 **Analytical balance**, accurate to 0,1 mg.
- 5.6 **Ultrasonic device**, for the degassing of reagents.
- 5.7 **Filters with suitable porosity (0,2 µm or 0,45 µm)**, for the filtration of reagents and sample.
- 5.8 **Vacuum pump**.
- 5.9 **pH meter**, for pH measurement.
- 5.10 **Volumetric flasks**, of capacity 50 ml and 100 ml.
- 5.11 **Glass beakers**, of capacity 50 ml and 100 ml.

## 6 Procedures

### 6.1 HPLC conditions

The choice of HPLC conditions depends on the apparatus in use and can be varied from those given below, provided that suitable separation of the compounds of interest is maintained. The following conditions have been found to be suitable for the HPLC column recommended in 5.2.

- 6.1.1 **Mobile phase**: Add 100 ml of acetonitrile (4.4) in 900 ml of water, then pipette 2,0 ml of phosphoric acid (4.5) and mix well. Before using, the mobile phase should be degassed with an ultrasonic device (5.6).
- 6.1.2 **Flow rate**: 1,0 ml/min.
- 6.1.3 **Detecting wavelength**: 214 nm.
- 6.1.4 **Column temperature**: room temperature.



**6.1.5** Injection volume: 20 µl.

Based on the above conditions, a typical chromatogram is shown in [Figure B.1](#) in [Annex B](#).

## 6.2 Calibration

- a) Weigh 0,1 g of monochloroacetic acid ([4.2](#)) and 0,1 g of dichloroacetic acid ([4.3](#)), accurate to 0,1 mg, in a 50 ml beaker, add approximately 20 ml of mobile phase ([6.1.1](#)) to it, and then stir to thoroughly dissolve. Transfer quantitatively to a 100 ml volumetric flask, make up to the mark with mobile phase, and completely homogenize.

Store this solution in a refrigerator at  $(4 \pm 2)$  °C and renew it every 7 d.

Quantitatively dilute 0,1 ml, 0,5 ml, 1,0 ml, 1,5 ml, and 2,5 ml of this solution to 100 ml with mobile phase ([6.1.1](#)), respectively. These standards shall be freshly prepared before analysis.

- b) Filter ([5.7](#)) the diluted solutions and inject 20 µl to the HPLC for analysis. The analysis shall be done at least twice in accordance with the chromatographic conditions given in [6.1](#). The obtained linear correlation coefficient (R) shall be 0,999 or above.

## 6.3 Sampling and analysis

Prepare and store the test sample in accordance with ISO 607.

Add approximately 5 g of test sample, accurate to 0,1 mg, in 30 ml of mobile phase ([6.1.1](#)), and stir until the sample is dissolved completely. Measure the pH with a pH meter ([5.9](#)). Adjust the pH to the same as that of the mobile phase with HCl solution ([4.7](#)). Quantitatively dilute the sample to 100 ml with mobile phase ([6.1.1](#)). Filter ([5.7](#)) it and inject 20 µl of the diluted solution for analysis on the chromatographic conditions given in [6.1](#).

NOTE If interference to the peak of monochloroacetic acid or dichloroacetic acid in the betaine chromatogram was found during the test of the betaine sample, prepare the sample solution in accordance with the method in [Annex A](#), using a cation-exchange column to remove the interference. After preliminary treatment, this solution shall be filtered ([5.7](#)) and injected 20 µl for analysis on the chromatographic conditions given in [6.1](#).

## 7 Results and calculation

### 7.1 General

Determine the monochloroacetic acid and dichloroacetic acid contents in the test sample using the procedure according to [6.3](#). Calculate the results in milligrams per kilogram (mg/kg) according to Formula (1) and Formula (2).

## 7.2 The content of monochloroacetic acid

The content of monochloroacetic acid in the test sample is calculated using Formula (1):

$$X_1 (\text{mg/kg}) = \frac{A \times V}{m} \quad (1)$$

where

$X_1$  is the content of monochloroacetic acid, in mg/kg;

$A$  is the calculated concentration of monochloroacetic acid in the test sample solution, in µg/ml;

$V$  is the volume of the test sample, in ml;

$m$  is the mass of the test sample, in g.

## 7.3 The content of dichloroacetic acid

The content of dichloroacetic acid in the test sample is calculated using Formula (2):

$$X_2 (\text{mg/kg}) = \frac{B \times V}{m} \quad (2)$$

where

$X_2$  is the content of dichloroacetic acid, in mg/kg;

$B$  is the calculated concentration of dichloroacetic acid in the test sample solution, in µg/ml.

## 8 Precision

### 8.1 Repeatability limit

The absolute difference between two independent single test results, obtained using the same method on identical test materials in the same laboratory by the same operator using the same equipment within a short interval of time, shall not exceed the repeatability limit ( $r$ ) in more than 5 % of cases.

According to ISO 5725-2,  $r$  can be expected to be

- 10 % for contents greater than or equal to 50 mg/kg, and
- 15 % for contents less than 50 mg/kg.

### 8.2 Reproducibility limit

The absolute difference between two single test results, obtained using the same method on identical test materials in different laboratories by different operators using different equipment, shall not exceed the reproducibility limit ( $R$ ) in more than 5 % of cases.  $R$  can be expected to be 40 %.

## 9 Test report

The test report shall contain at least the following information:

- a) the test method used, with reference to this part of ISO 17293 (i.e. ISO 17293-1);
- b) all information necessary for the complete identification of the test compound;

- c) all the data (e.g. in tabular form) obtained and the calibration curve;
- d) all operating details not specified in this part of ISO 17293, or regarded as optional, together with details of any incidents which might have influenced the test result(s).

## Annex A (informative)

### Preliminary treatment of betaine sample

#### A.1 Reagents

During the analysis, use only reagents of recognized analytical grade, and the water used shall conform to grade 3 in accordance with ISO 3696, unless otherwise specified.

**A.1.1 Cation exchanger (KAT)**, strongly acidic, 50 to 100 mesh.

**A.1.2 Hydrochloric acid**, 4 mol/l solution.

Add 700 ml of hydrochloric acid to 1 400 ml of water; mix well.

**A.1.3 Acetonitrile (CH<sub>3</sub>CN): HPLC grade.**

**A.1.4 Acetonitrile solution**, 10% (V/V).

Add 30 ml of acetonitrile ([A.1.3](#)) to 270 ml of water; mix well.

#### A.2 Apparatus

**A.2.1 Volumetric flask**, of capacity 100 ml.

**A.2.2 Glass beakers**, of capacity 200 ml and 3 000 ml.

**A.2.3 Glass exchange column with tap**, for resin preparation: inner tube 50 mm to 60 mm in diameter and 550 mm to 600 mm in height.

**A.2.4 Glass exchange column with tap**, for sample analysis: inner tube 15 mm in diameter and 400 mm in height.

#### A.3 Procedure

##### A.3.1 Preparation of cation-exchange resin

Place 600 ml of cation-exchange resin ([A.1.1](#)) in a 3 000 ml beaker ([A.2.2](#)) and cover by adding 2 000 ml of hydrochloric acid ([A.1.2](#)). Allow to stand for at least 2 h, with occasional stirring. Decant the acid and transfer the resin into the preparation column ([A.2.3](#)) by means of deionized water.

The column should contain a glass-wool plug. Wash the column with water until the eluate is free of chloride.

##### A.3.2 Cation-exchange column

Place 60 ml of cation-exchange resin in the analytical column ([A.2.4](#)) with a glass-wool plug in it. Wash with water until the pH of the eluate reaches 7, approximately. Displace the water with 100 ml of acetonitrile solution ([A.1.4](#)) at a rate of 1 ml/min to 3 ml/min.

### A.3.3 Sample elution

Weigh 5 g of betaine samples, accurate to 0,1 mg, in a 200 ml beaker (A.2.2), add 40 ml of acetonitrile solution (A.1.4), and stir until the sample is dissolved completely. Pass the sample solution quantitatively through the exchanger at a rate of 1 ml/min, add more acetonitrile solution (A.1.4) to eluate sample. Receive the eluate in a 100 ml volumetric flask (A.2.1) up to the mark for HPLC analysis.

## Annex B (informative)

### Typical chromatogram

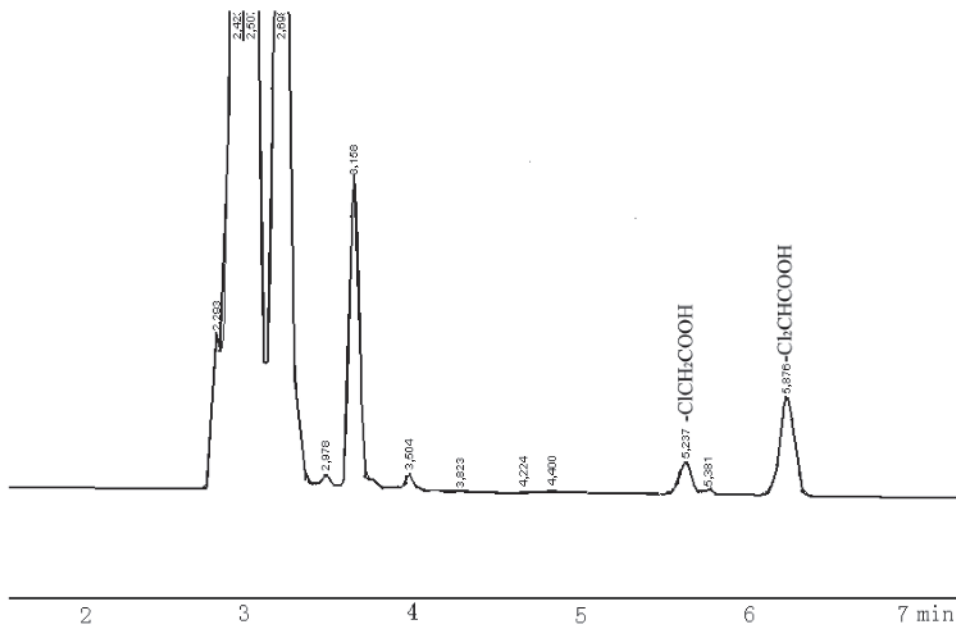


Figure B.1 — Typical HPLC chromatogram of monochloroacetic acid and dichloroacetic acid in betaine sample









# British Standards Institution (BSI)

BSI is the national body responsible for preparing British Standards and other standards-related publications, information and services.

BSI is incorporated by Royal Charter. British Standards and other standardization products are published by BSI Standards Limited.

## About us

We bring together business, industry, government, consumers, innovators and others to shape their combined experience and expertise into standards-based solutions.

The knowledge embodied in our standards has been carefully assembled in a dependable format and refined through our open consultation process. Organizations of all sizes and across all sectors choose standards to help them achieve their goals.

## Information on standards

We can provide you with the knowledge that your organization needs to succeed. Find out more about British Standards by visiting our website at [bsigroup.com/standards](http://bsigroup.com/standards) or contacting our Customer Services team or Knowledge Centre.

## Buying standards

You can buy and download PDF versions of BSI publications, including British and adopted European and international standards, through our website at [bsigroup.com/shop](http://bsigroup.com/shop), where hard copies can also be purchased.

If you need international and foreign standards from other Standards Development Organizations, hard copies can be ordered from our Customer Services team.

## Subscriptions

Our range of subscription services are designed to make using standards easier for you. For further information on our subscription products go to [bsigroup.com/subscriptions](http://bsigroup.com/subscriptions).

With **British Standards Online (BSOL)** you'll have instant access to over 55,000 British and adopted European and international standards from your desktop. It's available 24/7 and is refreshed daily so you'll always be up to date.

You can keep in touch with standards developments and receive substantial discounts on the purchase price of standards, both in single copy and subscription format, by becoming a **BSI Subscribing Member**.

**PLUS** is an updating service exclusive to BSI Subscribing Members. You will automatically receive the latest hard copy of your standards when they're revised or replaced.

To find out more about becoming a BSI Subscribing Member and the benefits of membership, please visit [bsigroup.com/shop](http://bsigroup.com/shop).

With a **Multi-User Network Licence (MUNL)** you are able to host standards publications on your intranet. Licences can cover as few or as many users as you wish. With updates supplied as soon as they're available, you can be sure your documentation is current. For further information, email [bsmusales@bsigroup.com](mailto:bsmusales@bsigroup.com).

## BSI Group Headquarters

389 Chiswick High Road London W4 4AL UK

## Revisions

Our British Standards and other publications are updated by amendment or revision.

We continually improve the quality of our products and services to benefit your business. If you find an inaccuracy or ambiguity within a British Standard or other BSI publication please inform the Knowledge Centre.

## Copyright

All the data, software and documentation set out in all British Standards and other BSI publications are the property of and copyrighted by BSI, or some person or entity that owns copyright in the information used (such as the international standardization bodies) and has formally licensed such information to BSI for commercial publication and use. Except as permitted under the Copyright, Designs and Patents Act 1988 no extract may be reproduced, stored in a retrieval system or transmitted in any form or by any means – electronic, photocopying, recording or otherwise – without prior written permission from BSI. Details and advice can be obtained from the Copyright & Licensing Department.

## Useful Contacts:

### Customer Services

**Tel:** +44 845 086 9001

**Email (orders):** [orders@bsigroup.com](mailto:orders@bsigroup.com)

**Email (enquiries):** [cservices@bsigroup.com](mailto:cservices@bsigroup.com)

### Subscriptions

**Tel:** +44 845 086 9001

**Email:** [subscriptions@bsigroup.com](mailto:subscriptions@bsigroup.com)

### Knowledge Centre

**Tel:** +44 20 8996 7004

**Email:** [knowledgecentre@bsigroup.com](mailto:knowledgecentre@bsigroup.com)

### Copyright & Licensing

**Tel:** +44 20 8996 7070

**Email:** [copyright@bsigroup.com](mailto:copyright@bsigroup.com)



...making excellence a habit.™