

BS ISO 16855:2013



BSI Standards Publication

Ships and marine technology — Loose gear of lifting appliances on ships — General requirements

bsi.

...making excellence a habit.™

National foreword

This British Standard is the UK implementation of ISO 16855:2013.

The UK participation in its preparation was entrusted to Technical Committee SME/32/-/4, Ships and marine technology - Outfitting and deck machinery.

A list of organizations represented on this committee can be obtained on request to its secretary.

This publication does not purport to include all the necessary provisions of a contract. Users are responsible for its correct application.

© The British Standards Institution 2014. Published by BSI Standards Limited 2014

ISBN 978 0 580 75008 3

ICS 47.020.40; 47.020.50

Compliance with a British Standard cannot confer immunity from legal obligations.

This British Standard was published under the authority of the Standards Policy and Strategy Committee on 28 February 2014.

Amendments issued since publication

| Date | Text affected |
|------|---------------|
|------|---------------|

INTERNATIONAL
STANDARD

BS ISO 16855:2013

ISO
16855

First edition
2013-12-15

**Ships and marine technology — Loose
gear of lifting appliances on ships —
General requirements**

*Navires et technologie maritime — Accessoires mobiles des appareils
de levage sur les navires — Exigences générales*



Reference number
ISO 16855:2013(E)

© ISO 2013



COPYRIGHT PROTECTED DOCUMENT

© ISO 2013

All rights reserved. Unless otherwise specified, no part of this publication may be reproduced or utilized otherwise in any form or by any means, electronic or mechanical, including photocopying, or posting on the internet or an intranet, without prior written permission. Permission can be requested from either ISO at the address below or ISO's member body in the country of the requester.

ISO copyright office
Case postale 56 • CH-1211 Geneva 20
Tel. + 41 22 749 01 11
Fax + 41 22 749 09 47
E-mail copyright@iso.org
Web www.iso.org

Published in Switzerland

Contents

| | Page |
|---------------------------------------|-----------|
| Foreword | iv |
| 1 Scope | 1 |
| 2 Terms and definitions | 1 |
| 3 Technical requirements | 1 |
| 3.1 Materials..... | 1 |
| 3.2 Blocks..... | 1 |
| 3.3 Other technical requirements..... | 2 |
| 4 Test requirements | 2 |
| 5 Marking | 3 |
| Bibliography | 7 |

Foreword

ISO (the International Organization for Standardization) is a worldwide federation of national standards bodies (ISO member bodies). The work of preparing International Standards is normally carried out through ISO technical committees. Each member body interested in a subject for which a technical committee has been established has the right to be represented on that committee. International organizations, governmental and non-governmental, in liaison with ISO, also take part in the work. ISO collaborates closely with the International Electrotechnical Commission (IEC) on all matters of electrotechnical standardization.

The procedures used to develop this document and those intended for its further maintenance are described in the ISO/IEC Directives, Part 1. In particular the different approval criteria needed for the different types of ISO documents should be noted. This document was drafted in accordance with the editorial rules of the ISO/IEC Directives, Part 2 (see www.iso.org/directives).

Attention is drawn to the possibility that some of the elements of this document may be the subject of patent rights. ISO shall not be held responsible for identifying any or all such patent rights. Details of any patent rights identified during the development of the document will be in the Introduction and/or on the ISO list of patent declarations received (see www.iso.org/patents).

Any trade name used in this document is information given for the convenience of users and does not constitute an endorsement.

For an explanation on the meaning of ISO specific terms and expressions related to conformity assessment, as well as information about ISO's adherence to the WTO principles in the Technical Barriers to Trade (TBT) see the following URL: [Foreword - Supplementary information](#)

The committee responsible for this document is ISO/TC 8, *Ships and marine technology*, Subcommittee SC 4, *Outfitting and deck machinery*.

Ships and marine technology — Loose gear of lifting appliances on ships — General requirements

1 Scope

This International Standard specifies the general requirements for loose gear of lifting appliances on ships.

This International Standard is applicable to lifting appliances on ships.

2 Terms and definitions

For the purposes of this document, the following terms and definitions apply.

2.1

loose gear

gear which is not permanently attached to the lifting appliances, such as chains, triangle eyeplates, hooks, blocks, shackles, swivels, sockets, preventer guys with patent clips, and rigging screws

Note 1 to entry: Lifting beams, spreaders, frames, and similar items of equipment are also regarded as loose gear.

2.2

safe working load

certified load for which the component has been designed and tested

Note 1 to entry: This certified load should be not less than the maximum load to which the component will be subjected when the appliance of which it forms part is operating at its SWL.

3 Technical requirements

3.1 Materials

3.1.1 Loose gear, such as hooks, lifting eyes, swivels, and shackles shall not be made of cast iron or cast steel.

3.1.2 Forgings shall be normalized or normalized and tempered or otherwise heat-treated according to a method appropriate to the properties of materials. Shackle materials shall use solid steel manufactured by Martin furnaces, electric furnaces, or oxygen top blown converters; it is recommended to use the electroslag remelting process.

3.2 Blocks

3.2.1 Blocks shall be so constructed to minimize the clearance between sheaves and enclosure partition plates to prevent ropes from jamming.

3.2.2 Effective lubricating shall be maintained to the blocks during operation. Provision shall be made for lubricating all bearings and swivel head fittings without dismantling the block.

3.2.3 Snatch blocks shall not be used in the lifting appliance systems.

3.2.4 The ratio of sheave diameter measured at the bottom of rope groove to the diameter of rope shall not be less than that as given in [Table 1](#).

Table 1 — Ratio of sheave diameter to rope diameter

| Use of sheaves | | Sheave diameter/rope diameter | |
|----------------|---|-------------------------------|--------------|
| | | Running ropes | Static ropes |
| Wire ropes | Derrick rigs (including derrick cranes) | 13 | 8 |
| | Cranes and submersible handling systems | 19 | 8 |
| Fibre ropes | | 6 | |

3.3 Other technical requirements

3.3.1 “C” type hooks shall be so designed as to prevent the risk of the hook from catching on the ship’s structure or other obstruction when hoisting by means of a hook shelter. Hooks for special purposes, such as for lifting freight containers, shall comply with the appropriate recognized International Standards.

3.3.2 Swivel shall be provided between the hook and short link chain or other item for lifting cargo, and capable of rotating freely and preventing from getting loose.

3.3.3 It is recommended that heavy load such as bob weight or short link chain be attached to the hook, such that disorder of reeling rope will not occur when the winch is working in no load condition.

3.3.4 The shackle pin end shall be screwed and provided with devices to prevent from getting loose. Shackles used for attaching the lifting gear (such as hooks, bob weight, or short link chains for lifting cargo, etc.) shall be provided with countersunk pins.

3.3.5 The thickness of triangle plates connecting short link chains and cargo runners shall be appropriate to the associated shackle so as to minimize the clearance between them.

3.3.6 The construction of rigging screws shall be capable of preventing their end fittings from turning. The end fittings of the rigging screw shall be forged in one piece. The rigging screws of hook type end fittings shall not be used in the lifting appliance system.

3.3.7 Chains used as span chain or as part of preventer guy shall be of studless long link chains. Preventer guy with patent clip shall be fitted with stop device; the distance between the device and the end clip shall be as short as practical and, in general, not greater than one pitch of the clips.

3.3.8 The items of loose gear, such as eyes, links, shanks, straps and hooks, etc., that have a wastage over 10 % of their original dimensions and a wastage of pins over 6 % of their original dimensions, or cracks or permanent deformation, and any breakage or cracks on the sheaves, shall be replaced or repaired immediately.

3.3.9 Welding shall not be used to lengthen, alter, or repair chains, hooks, links, shackles, or swivels.

4 Test requirements

4.1 Where testing machines are used to apply test loads, they shall be calibrated biennially by a recognized unit and the accuracy shall be within ± 2 %. Where test weights are used to apply test loads, the weights shall be certified as accurate to within ± 2 %.

4.2 Every item of loose gear shall be proof-tested. The proof load applied to each item of loose gear shall be as the requirements given in [Table 2](#) and associated notes. Proof load shall be applied to each item with a testing machine or test weight for a duration of not less than 5 min.

Table 2 — Test load for loose gear

| No. | Item | Test load kN |
|-----|--|---------------------------------|
| 1 | Single sheave blocks | $4 \times \text{SWL}$ |
| 2 | Multi-sheave blocks | $2 \times \text{SWL}$ |
| | $\text{SWL} \leq 245 \text{ kN}$ | $0,933 \times \text{SWL} + 265$ |
| | $245 \text{ kN} < \text{SWL} \leq 1\,568 \text{ kN}$ | $1,1 \times \text{SWL}$ |
| 3 | Chains, hooks, rings, shackles, swivels, etc | $2 \times \text{SWL}$ |
| | $\text{SWL} \leq 245 \text{ kN}$ | $1,22 \times \text{SWL} + 196$ |
| | $245 \text{ kN} < \text{SWL}$ | |
| 4 | Lifting beams, spreaders, frames, and the like | $2 \times \text{SWL}$ |
| | $\text{SWL} \leq 98 \text{ kN}$ | $1,04 \times \text{SWL} + 94$ |
| | $98 \text{ kN} < \text{SWL} \leq 1\,568 \text{ kN}$ | $1,1 \times \text{SWL}$ |
| | $\text{SWL} > 1\,568 \text{ kN}$ | |

NOTE 1 The safe working load for single sheave blocks, including single sheave blocks with becketts, shall be taken as one-half of the load on the head fitting.

NOTE 2 The safe working load for a multi-sheave block shall be taken as the load on the head fitting.

NOTE 3 As an alternative to the testing per [Table 2](#), the loose gear can be proof-tested in accordance with the requirements of the Flag Administration or a Classification Society acceptable to the Flag Administration provided the proof test is equal to or greater than the proof test specified in [Table 2](#).

4.3 For blocks, test loads shall be taken as the total load on the head fittings of blocks during tests. If blocks are provided with becketts, during their proof tests, loads applied to becketts shall be taken as their proof test loads for acceptance.

4.4 In any case when single sheave blocks are used, shackles or end fittings connected to blocks should be stamped with twice the safe working load marked on the blocks.

4.5 After proof testing, each item of loose gear shall be thoroughly examined for deformation, cracks, or other defects and to ensure that its rotating parts can rotate freely.

4.6 Short and long link chains shall be subjected to a breaking test in addition to the proof test as required in [Table 2](#). In general, a sample of 5 links length shall be taken from each length of chain measuring 55 m and shall withstand a breaking load not less than $4 \times \text{SWL}$ for the chain.

4.7 Where the design of a lifting beam or similar item is such that the load can be lifted and supported in more than one manner, each arrangement shall be separately tested.

4.8 Under the following circumstances, loose gear shall be re-tested:

- a) in case of no corresponding certificates of examination to prove that components have been tested in advance;
- b) after any repair or change that might affect component strength.

5 Marking

5.1 Every item of loose gear which has been proof-tested and examined and found satisfactory in accordance with the above [Clause 5](#) shall be marked visibly and permanently.

5.2 In view of the importance of ensuring correct safe working loads at specific positions of lifting appliances for each component of loose gear and for easy replacement, it is recommended to keep a specification or a detailed rigging plan on board.

5.3 It is recommended that the specification should be based on ISO 233, which has already provided a set of standard tables.

5.4 It is recommended that rigging plan use the symbol table specified in ISO 233.

5.5 Each item of loose gear, including lifting beams and similar components, shall be marked with the following contents:

- a) safe working load, in t;
- b) mark of steel grade shown in [Table 3](#);
- c) manufacturer's stamp or the stamp of test unit;
- d) design maximum wire rope diameter for blocks;
- e) self weight, in kN, for lifting beams and similar components.

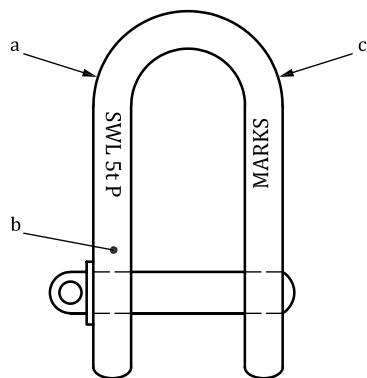
Table 3 — Quality level marks of materials

| Quality level marks | Steel types | Ultimate tensile strength N/mm ² |
|---------------------|---------------------|--|
| L | Mild steel | 300 |
| M | High strength steel | 400 |
| P | Alloy steel | 500 |
| S | Alloy steel | 630 |
| T | Alloy steel | 800 |

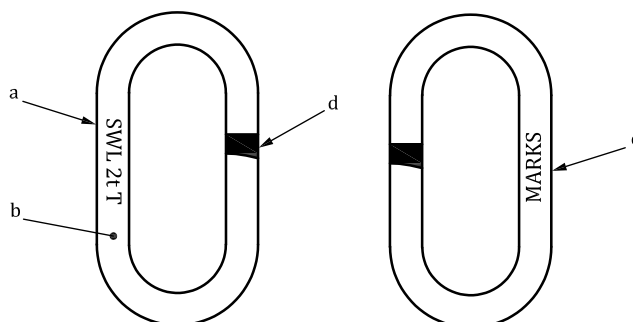
5.6 Fraction strokes and slashes shall be avoided; it is preferred to use points or dashed lines rather than boundaries. In general, when safe working load is marked in t, the value following the decimal shall be marked.

5.7 Marks shall be stamped at the conspicuous place of the item so as to facilitate inspection but they shall not be stamped at the places where high stress or stress concentration takes place. The positions where marks are stamped shall be as follows and the typical arrangement of the marks is shown in [Figure 1](#).

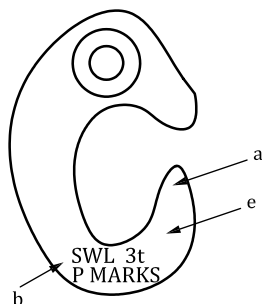
- a) hooks: to be marked at their broad space but not at their bends;
- b) blocks: to be marked at their straps or face plates;
- c) shackles: to be marked at their jaws adjacent to the pin holes;
- d) swivels: to be marked at the sides of their bow piece;
- e) chains: to be marked at the straight side of their end links;
- f) preventer guys with patent clips: to be marked at each clip.



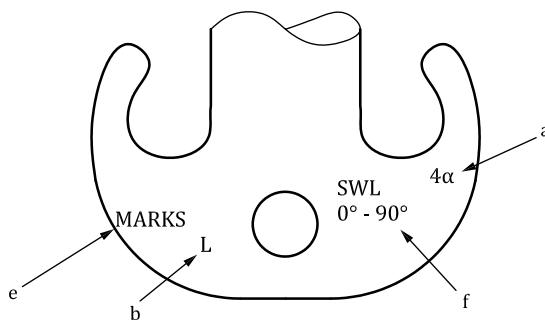
a) Shackles



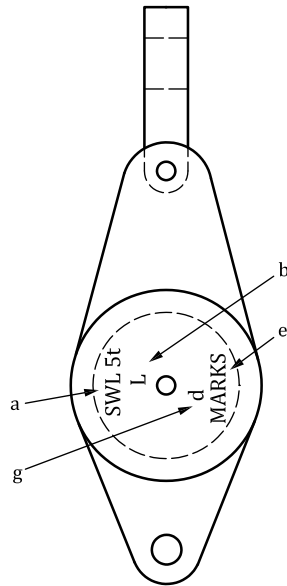
b) Chains and links



c) C hooks



d) Ramshorn hooks



e) Blocks

Key

- a safe working load
- b quality mark
- c identification number and surveyor's or manufacturer's stamp
- d weld (if any)
- e identification number and surveyor's or manufacturer's stamp (Marks can be on the back of the hook/block, i.e. on the opposite side to SWL.)
- f range of sling angles
- g rope diameter

Figure 1 — Typical marks of loose gear

Bibliography

- [1] ISO 233, *Documentation — Transliteration of Arabic characters into Latin characters*
- [2] ISO 1837, *Lifting hooks — Nomenclature*
- [3] ISO 2415, *Forged shackles for general lifting purposes — Dee shackles and bow shackles*

British Standards Institution (BSI)

BSI is the national body responsible for preparing British Standards and other standards-related publications, information and services.

BSI is incorporated by Royal Charter. British Standards and other standardization products are published by BSI Standards Limited.

About us

We bring together business, industry, government, consumers, innovators and others to shape their combined experience and expertise into standards-based solutions.

The knowledge embodied in our standards has been carefully assembled in a dependable format and refined through our open consultation process. Organizations of all sizes and across all sectors choose standards to help them achieve their goals.

Information on standards

We can provide you with the knowledge that your organization needs to succeed. Find out more about British Standards by visiting our website at bsigroup.com/standards or contacting our Customer Services team or Knowledge Centre.

Buying standards

You can buy and download PDF versions of BSI publications, including British and adopted European and international standards, through our website at bsigroup.com/shop, where hard copies can also be purchased.

If you need international and foreign standards from other Standards Development Organizations, hard copies can be ordered from our Customer Services team.

Subscriptions

Our range of subscription services are designed to make using standards easier for you. For further information on our subscription products go to bsigroup.com/subscriptions.

With **British Standards Online (BSOL)** you'll have instant access to over 55,000 British and adopted European and international standards from your desktop. It's available 24/7 and is refreshed daily so you'll always be up to date.

You can keep in touch with standards developments and receive substantial discounts on the purchase price of standards, both in single copy and subscription format, by becoming a **BSI Subscribing Member**.

PLUS is an updating service exclusive to BSI Subscribing Members. You will automatically receive the latest hard copy of your standards when they're revised or replaced.

To find out more about becoming a BSI Subscribing Member and the benefits of membership, please visit bsigroup.com/shop.

With a **Multi-User Network Licence (MUNL)** you are able to host standards publications on your intranet. Licences can cover as few or as many users as you wish. With updates supplied as soon as they're available, you can be sure your documentation is current. For further information, email bsmusales@bsigroup.com.

BSI Group Headquarters

389 Chiswick High Road London W4 4AL UK

Revisions

Our British Standards and other publications are updated by amendment or revision.

We continually improve the quality of our products and services to benefit your business. If you find an inaccuracy or ambiguity within a British Standard or other BSI publication please inform the Knowledge Centre.

Copyright

All the data, software and documentation set out in all British Standards and other BSI publications are the property of and copyrighted by BSI, or some person or entity that owns copyright in the information used (such as the international standardization bodies) and has formally licensed such information to BSI for commercial publication and use. Except as permitted under the Copyright, Designs and Patents Act 1988 no extract may be reproduced, stored in a retrieval system or transmitted in any form or by any means – electronic, photocopying, recording or otherwise – without prior written permission from BSI. Details and advice can be obtained from the Copyright & Licensing Department.

Useful Contacts:

Customer Services

Tel: +44 845 086 9001

Email (orders): orders@bsigroup.com

Email (enquiries): cservices@bsigroup.com

Subscriptions

Tel: +44 845 086 9001

Email: subscriptions@bsigroup.com

Knowledge Centre

Tel: +44 20 8996 7004

Email: knowledgecentre@bsigroup.com

Copyright & Licensing

Tel: +44 20 8996 7070

Email: copyright@bsigroup.com



...making excellence a habit.™