

BS ISO 16844-2:2011



BSI Standards Publication

Road vehicles — Tachograph systems

Part 2: Electrical interface with recording unit

bsi.

...making excellence a habit.™

National foreword

This British Standard is the UK implementation of ISO 16844-2:2011.

The UK participation in its preparation was entrusted to Technical Committee AUE/16, Electrical and electronic equipment.

A list of organizations represented on this committee can be obtained on request to its secretary.

This publication does not purport to include all the necessary provisions of a contract. Users are responsible for its correct application.

© BSI 2011

ISBN 978 0 580 66587 5

ICS 43.040.10

Compliance with a British Standard cannot confer immunity from legal obligations.

This British Standard was published under the authority of the Standards Policy and Strategy Committee on 31 March 2011.

Amendments issued since publication

Date	Text affected
------	---------------

**Road vehicles — Tachograph systems —
Part 2:
Electrical interface with recording unit**

Véhicules routiers — Systèmes tachygraphes —

Partie 2: Interface électrique avec unité d'enregistrement



PDF disclaimer

This PDF file may contain embedded typefaces. In accordance with Adobe's licensing policy, this file may be printed or viewed but shall not be edited unless the typefaces which are embedded are licensed to and installed on the computer performing the editing. In downloading this file, parties accept therein the responsibility of not infringing Adobe's licensing policy. The ISO Central Secretariat accepts no liability in this area.

Adobe is a trademark of Adobe Systems Incorporated.

Details of the software products used to create this PDF file can be found in the General Info relative to the file; the PDF-creation parameters were optimized for printing. Every care has been taken to ensure that the file is suitable for use by ISO member bodies. In the unlikely event that a problem relating to it is found, please inform the Central Secretariat at the address given below.



COPYRIGHT PROTECTED DOCUMENT

© ISO 2011

All rights reserved. Unless otherwise specified, no part of this publication may be reproduced or utilized in any form or by any means, electronic or mechanical, including photocopying and microfilm, without permission in writing from either ISO at the address below or ISO's member body in the country of the requester.

ISO copyright office
Case postale 56 • CH-1211 Geneva 20
Tel. + 41 22 749 01 11
Fax + 41 22 749 09 47
E-mail copyright@iso.org
Web www.iso.org

Published in Switzerland

Foreword

ISO (the International Organization for Standardization) is a worldwide federation of national standards bodies (ISO member bodies). The work of preparing International Standards is normally carried out through ISO technical committees. Each member body interested in a subject for which a technical committee has been established has the right to be represented on that committee. International organizations, governmental and non-governmental, in liaison with ISO, also take part in the work. ISO collaborates closely with the International Electrotechnical Commission (IEC) on all matters of electrotechnical standardization.

International Standards are drafted in accordance with the rules given in the ISO/IEC Directives, Part 2.

The main task of technical committees is to prepare International Standards. Draft International Standards adopted by the technical committees are circulated to the member bodies for voting. Publication as an International Standard requires approval by at least 75 % of the member bodies casting a vote.

Attention is drawn to the possibility that some of the elements of this document may be the subject of patent rights. ISO shall not be held responsible for identifying any or all such patent rights.

ISO 16844-2 was prepared by Technical Committee ISO/TC 22, *Road vehicles*, Subcommittee SC 3, *Electrical and electronic equipment*.

This second edition cancels and replaces the first edition (ISO 16844-2:2004), which has been technically revised.

ISO 16844 consists of the following parts, under the general title *Road vehicles — Tachograph systems*:

- *Part 1: Electrical connector*
- *Part 2: Electrical interface with recording unit*
- *Part 3: Motion sensor interface*
- *Part 4: CAN interface*
- *Part 5: Secured CAN interface*
- *Part 6: Diagnostics*
- *Part 7: Parameters*

Introduction

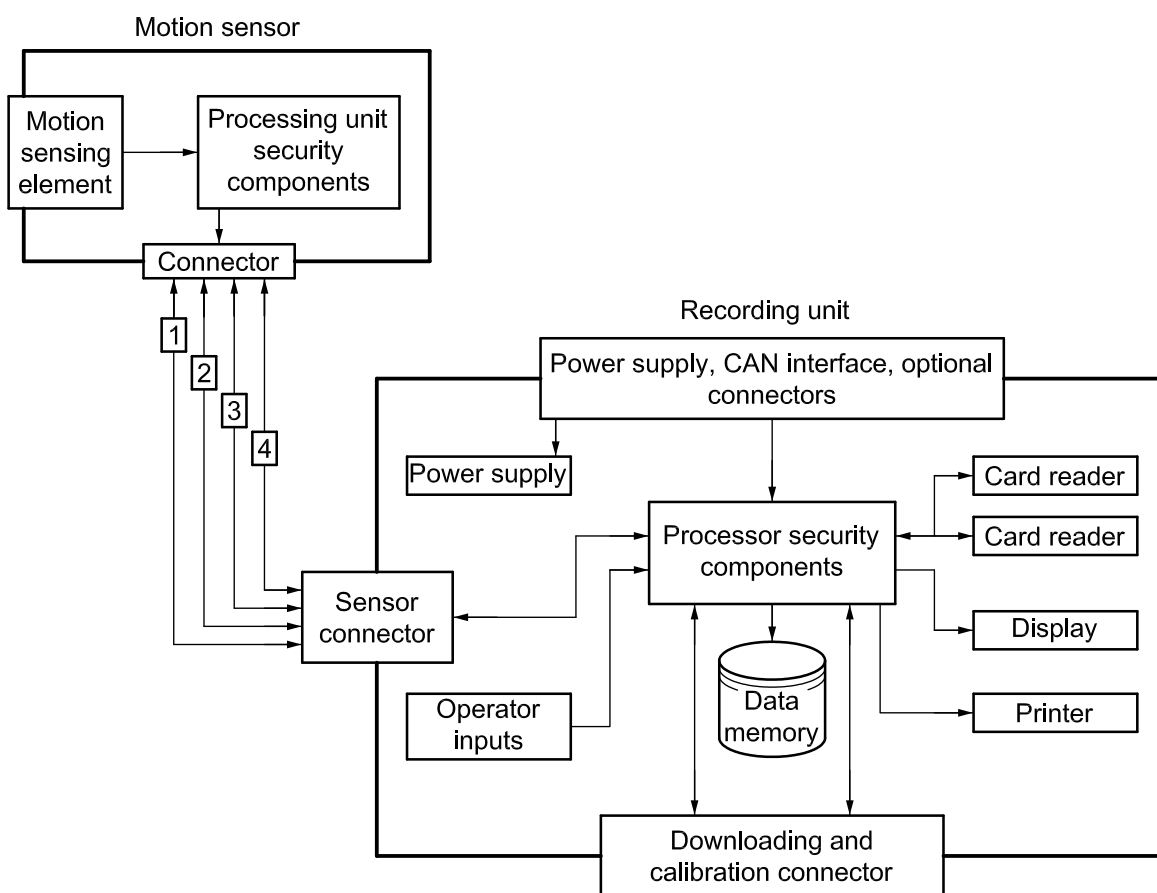
This part of ISO 16844 supports and facilitates the communication between electronic units and a tachograph. The tachograph is based upon European Council Regulation (EC) No. 561/2006 and (EEC) No. 3821/85 as last amended.

Its purpose is to ensure compatibility of tachographs from various tachograph manufacturers.

The basis of the digital tachograph concept is a Recording Unit (RU) that stores data related to the activities of the drivers of the vehicle on which it is installed. When the RU is in normal operation status, the data stored in its memory are made accessible to various entities such as drivers, authorities, workshops and transport companies in a variety of ways: they may be displayed on a screen, printed by a printing device or downloaded to an external device. Access to stored data is controlled by a smart card inserted in the tachograph.

In order to prevent manipulation of the tachograph system, the speed signal sender (motion sensor) is provided with an encrypted data link.

A typical tachograph system is shown in Figure 1.



Key

- | | |
|-------------------|---------------------------|
| 1 positive supply | 3 speed signal, real time |
| 2 battery minus | 4 data signal in/out |

Figure 1 — Typical tachograph system

Road vehicles — Tachograph systems —

Part 2: Electrical interface with recording unit

1 Scope

This part of ISO 16844 specifies the electrical connection between the recording unit, and the vehicle network and the motion sensor, in tachograph systems used in road vehicles.

2 Normative references

The following referenced documents are indispensable for the application of this document. For dated references, only the edition cited applies. For undated references, the latest edition of the referenced document (including any amendments) applies.

ISO 16844-1, *Road vehicles — Tachograph systems — Part 1: Electrical connector*

ISO 16844-4, *Road vehicles — Tachograph systems — Part 4: CAN interface*

3 Requirements

3.1 Connector

The connector used for the recording unit shall be in accordance with ISO 16844-1.

3.2 Electrical connection

3.2.1 Standard connector — Module A

The electrical requirements of module A of the standard connector, used for power supply and CAN bus connection, shall be in accordance with Table 1.

Table 1 — Electrical requirements — Standard connector — Module A

Connector contact no. and function	Parameter	Electrical requirement ^a			Remarks
		Minimum	Typical	Maximum	
A1 Permanent power	Voltage and nominal fuse link current	20 [10,8] V		32 [16] V 5 A	Referred to pin A5
A2 Illumination	Current	—	100 mA	—	—
A3 Ignition	Voltage and nominal fuse link current	20 [10,8] V		32 [16] V 5 A	Referred to pin A6
A4 CAN1_H		Powered by ignition			b
A5 Battery minus					
A6 Ground, GND					
A7 CAN1_GND					b
A8 CAN1_L		Powered by ignition			b
^a Values between square brackets refer to networks of 12 V nominal supply voltage. ^b Electrical requirements shall be according to ISO 16844-4.					

3.2.2 Standard connector — Module B

3.2.2.1 Electrical requirements

The electrical requirements of module B of the standard connector, used for tachograph speed transmitter connection, shall be in accordance with Table 2.

3.2.2.2 Speed pulse output and distance signal 4 pulse/m — Block diagram

The block diagram of the speed pulse output and distance signal 4 pulse/m shall be according to Figure 2.

3.2.2.3 Speed pulse output — Timing diagram

The timing diagram of speed pulse output (connector contact B7) versus the motion sensor speed signal (connector contact B3) shall be according to Figure 3.

Table 2 — Electrical requirements — Standard connector — Module B

Connector contact no. and function	Parameter	Electrical requirement		Remarks
		Minimum	Maximum	
B1 Positive supply ^a	Voltage	6,5 V	9 V	
B2 Battery minus ^a				
B3 Speed signal, real time ^a	U_{low}		1,0 V	$I = 250 \mu\text{A}$
	U_{high}	3,8 V		$I = -150 \mu\text{A}$
B4 Data signal ^a	U_{low} (input)		1,2 V	$I = -1 \text{ mA}$
	U_{high} (input)	5,2 V		$I = -0,5 \text{ mA}$
	U_{low} (output)		1,0 V	$I = 1 \text{ mA}$
	U_{high} (output)	5,4 V		$I = -20 \mu\text{A}$
	Transmission speed	1 164 bit/s	1 236 bit/s	
B5	—	—	—	Not allocated
B6 Speed pulse output ^b				c
B7 Speed pulse output ^b see 3.2.2.2	U_{low}		1,5 V	$I = 1 \text{ mA}$
	U_{high}	5,5 V		$I = -1 \text{ mA}$
	Frequency ($1/T$)		< 1,6 kHz	
	Pulse duration (t)	0,64 ms	4 ms	
	Pulse duration		1 %	
	Accuracy			
	Tachograph constant (k)	4 000 pulse/km	25 000 pulse/km	
B8 Distance signal, 4 pulse/m (optional) ^b see 3.2.2.3	U_{low}		1,5 V	$I = 1 \text{ mA}$
	U_{high}	5,5 V		$I = -1 \text{ mA}$
	Frequency		244 Hz	$v = 220 \text{ km/h}$
	Pulse duration [t_1]	1,6 ms		
<p>^a Permanently powered: battery minus. See ISO 16844-3.</p> <p>^b Powered by ignition: Ground.</p> <p>^c The values can be different to B7.</p>				

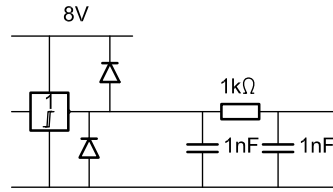
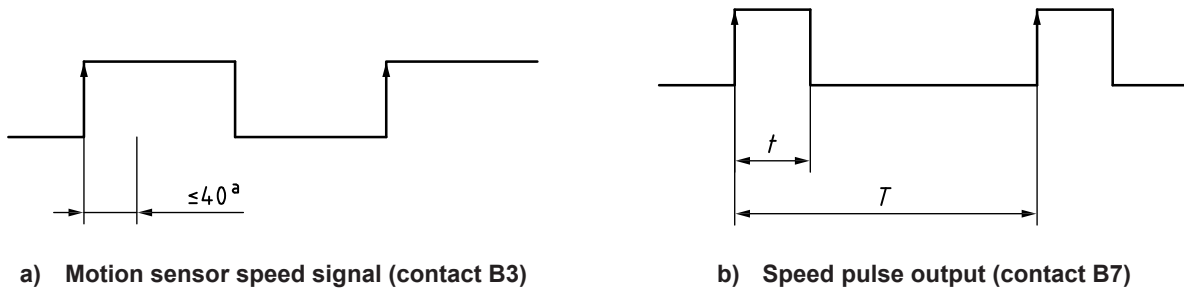


Figure 2 — Block diagram



^a Max. 40 μs delay, ±10 μs jitter.

Figure 3 — Speed pulse output

Equations (1) to (4) describe the relationship between speed (v), tachograph constant (k) and speed pulse output (T and t).

$$T = \frac{1}{f_{\text{motion sensor}}} \quad (1)$$

where

T is the complete speed pulse duration in seconds (s);

f is the speed pulse frequency in hertz (Hz).

$$t = \frac{16\,000}{k} \quad (2)$$

where

t is the positive speed pulse duration in milliseconds (ms);

k is the tachograph constant in pulses per kilometre (pulse/km).

$$v = \frac{3\,600}{k \times T} \quad (3)$$

where

v is the vehicle speed above ground in kilometres per hour (km/h);

k is the tachograph constant in pulses per kilometre (pulse/km);

T is the complete speed pulse duration in seconds (s).

$$v = \frac{3\,600}{(16/t) \times T} = 225 \text{ km/h} \times \frac{t}{T} \quad (4)$$

where

v is the vehicle speed above ground in kilometres per hour (km/h);

T is the complete speed pulse duration in seconds (s);

t is the positive speed pulse duration in milliseconds (ms).

3.2.2.4 Distance signal 4 pulse/m — Timing diagram

The timing diagram of the distance signal 4 pulse/m (connector contact B8) shall be according to the example in Figure 4, where each positive edge represents a distance of 250 mm, as averaged over 1 km.



Figure 4 — Distance signal

3.2.3 Module C (optional)

The optional module C of the standard connector shall be used for engine revolution sensor connection and the second CAN interface (CAN2). The connector connections shall be in accordance with ISO 16844-1.

3.2.4 Module D (optional)

The optional module D of the standard connector, used for optional functions (and recommended for connector pinning when used), shall be in accordance with Table 3.

All functions of this module shall be powered over ignition switch.

Table 3 — Remarks on the optional module D of the standard connector

Connector contact no. and function	Remarks
D1 Status input 1	
D2 Status input 2	
D3	Not allocated
D4 General tachograph warning output	Open collector 10 mA, active pull down
D5	Not allocated
D6 Speed pulse output for instrument	
D7 Data communication I/O	Speedometer interface or K-Line
D8	Not allocated

Bibliography

- [1] ISO 16844-3, *Road vehicles — Tachograph systems — Part 3: Motion sensor interface*
- [2] Regulation (EC) No. 561/2006 of the European Parliament and the Council of 15 March 2006 on the harmonisation of certain social legislation relating to the road transport and amending Council Regulations (EEC) No. 3821/85 and (EC) No. 2135/98 and repealing Council Regulation (EEC) No. 3820/85
- [3] Council Regulation (EEC) No. 3821/85 of 20 December 1985 on recording equipment in road transport

ICS 43.040.10

Price based on 6 pages

British Standards Institution (BSI)

BSI is the national body responsible for preparing British Standards and other standards-related publications, information and services.

BSI is incorporated by Royal Charter. British Standards and other standardization products are published by BSI Standards Limited.

About us

We bring together business, industry, government, consumers, innovators and others to shape their combined experience and expertise into standards-based solutions.

The knowledge embodied in our standards has been carefully assembled in a dependable format and refined through our open consultation process. Organizations of all sizes and across all sectors choose standards to help them achieve their goals.

Information on standards

We can provide you with the knowledge that your organization needs to succeed. Find out more about British Standards by visiting our website at bsigroup.com/standards or contacting our Customer Services team or Knowledge Centre.

Buying standards

You can buy and download PDF versions of BSI publications, including British and adopted European and international standards, through our website at bsigroup.com/shop, where hard copies can also be purchased.

If you need international and foreign standards from other Standards Development Organizations, hard copies can be ordered from our Customer Services team.

Subscriptions

Our range of subscription services are designed to make using standards easier for you. For further information on our subscription products go to bsigroup.com/subscriptions.

With **British Standards Online (BSOL)** you'll have instant access to over 55,000 British and adopted European and international standards from your desktop. It's available 24/7 and is refreshed daily so you'll always be up to date.

You can keep in touch with standards developments and receive substantial discounts on the purchase price of standards, both in single copy and subscription format, by becoming a **BSI Subscribing Member**.

PLUS is an updating service exclusive to BSI Subscribing Members. You will automatically receive the latest hard copy of your standards when they're revised or replaced.

To find out more about becoming a BSI Subscribing Member and the benefits of membership, please visit bsigroup.com/shop.

With a **Multi-User Network Licence (MUNL)** you are able to host standards publications on your intranet. Licences can cover as few or as many users as you wish. With updates supplied as soon as they're available, you can be sure your documentation is current. For further information, email bsmusales@bsigroup.com.

BSI Group Headquarters

389 Chiswick High Road London W4 4AL UK

Revisions

Our British Standards and other publications are updated by amendment or revision.

We continually improve the quality of our products and services to benefit your business. If you find an inaccuracy or ambiguity within a British Standard or other BSI publication please inform the Knowledge Centre.

Copyright

All the data, software and documentation set out in all British Standards and other BSI publications are the property of and copyrighted by BSI, or some person or entity that owns copyright in the information used (such as the international standardization bodies) and has formally licensed such information to BSI for commercial publication and use. Except as permitted under the Copyright, Designs and Patents Act 1988 no extract may be reproduced, stored in a retrieval system or transmitted in any form or by any means – electronic, photocopying, recording or otherwise – without prior written permission from BSI. Details and advice can be obtained from the Copyright & Licensing Department.

Useful Contacts:

Customer Services

Tel: +44 845 086 9001

Email (orders): orders@bsigroup.com

Email (enquiries): cservices@bsigroup.com

Subscriptions

Tel: +44 845 086 9001

Email: subscriptions@bsigroup.com

Knowledge Centre

Tel: +44 20 8996 7004

Email: knowledgecentre@bsigroup.com

Copyright & Licensing

Tel: +44 20 8996 7070

Email: copyright@bsigroup.com



...making excellence a habit.™