

BS ISO 16525-7:2014



BSI Standards Publication

# Adhesives — Test methods for isotropic electrically conductive adhesives

Part 7: Environmental test methods

**bsi.**

...making excellence a habit.™

**National foreword**

This British Standard is the UK implementation of ISO 16525-7:2014.

The UK participation in its preparation was entrusted to Technical Committee PRI/52, Adhesives.

A list of organizations represented on this committee can be obtained on request to its secretary.

This publication does not purport to include all the necessary provisions of a contract. Users are responsible for its correct application.

© The British Standards Institution 2014. Published by BSI Standards Limited 2014

ISBN 978 0 580 76959 7

ICS 83.180

**Compliance with a British Standard cannot confer immunity from legal obligations.**

This British Standard was published under the authority of the Standards Policy and Strategy Committee on 31 May 2014.

**Amendments issued since publication**

Date	Text affected
------	---------------

---

---

---

**Adhesives — Test methods for  
isotropic electrically conductive  
adhesives —**

**Part 7:  
Environmental test methods**

*Adhésifs — Méthodes d'essai pour adhésifs à conductivité électrique  
isotrope —*

*Partie 7: Méthodes d'essai environnemental*





**COPYRIGHT PROTECTED DOCUMENT**

© ISO 2014

All rights reserved. Unless otherwise specified, no part of this publication may be reproduced or utilized otherwise in any form or by any means, electronic or mechanical, including photocopying, or posting on the internet or an intranet, without prior written permission. Permission can be requested from either ISO at the address below or ISO's member body in the country of the requester.

ISO copyright office  
Case postale 56 • CH-1211 Geneva 20  
Tel. + 41 22 749 01 11  
Fax + 41 22 749 09 47  
E-mail [copyright@iso.org](mailto:copyright@iso.org)  
Web [www.iso.org](http://www.iso.org)

Published in Switzerland

# Contents

	Page
Foreword .....	iv
<b>1 Scope .....</b>	<b>1</b>
<b>2 Normative references .....</b>	<b>1</b>
<b>3 Terms and definitions .....</b>	<b>2</b>
<b>4 Apparatus and test board .....</b>	<b>2</b>
<b>5 Preparation of test circuit board .....</b>	<b>3</b>
<b>6 Tests .....</b>	<b>4</b>
6.1 Test items and conditions .....	4
6.2 Procedure .....	4
<b>7 Test report .....</b>	<b>5</b>

## Foreword

ISO (the International Organization for Standardization) is a worldwide federation of national standards bodies (ISO member bodies). The work of preparing International Standards is normally carried out through ISO technical committees. Each member body interested in a subject for which a technical committee has been established has the right to be represented on that committee. International organizations, governmental and non-governmental, in liaison with ISO, also take part in the work. ISO collaborates closely with the International Electrotechnical Commission (IEC) on all matters of electrotechnical standardization.

The procedures used to develop this document and those intended for its further maintenance are described in the ISO/IEC Directives, Part 1. In particular the different approval criteria needed for the different types of ISO documents should be noted. This document was drafted in accordance with the editorial rules of the ISO/IEC Directives, Part 2. [www.iso.org/directives](http://www.iso.org/directives).

Attention is drawn to the possibility that some of the elements of this document may be the subject of patent rights. ISO shall not be held responsible for identifying any or all such patent rights. Details of any patent rights identified during the development of the document will be in the Introduction and/or on the ISO list of patent declarations received. [www.iso.org/patents](http://www.iso.org/patents).

Any trade name used in this document is information given for the convenience of users and does not constitute an endorsement.

The committee responsible for this document is ISO/TC 61, *Plastics*, Subcommittee SC 11, *Products*.

ISO 16525 consists of the following parts, under the general title *Adhesives — Test methods for isotropic electrically conductive adhesives*:

- *Part 1: General test methods*
- *Part 2: Determination of electric characteristics for use in electronic assemblies*
- *Part 3: Determination of heat-transfer properties*
- *Part 4: Determination of shear strength and electrical resistance using rigid-to-rigid bonded assemblies*
- *Part 5: Determination of shear fatigue*
- *Part 6: Determination of pendulum-type shear impact*
- *Part 7: Environmental test methods*
- *Part 8: Electrochemical migration test methods*
- *Part 9: Determination of high-speed signal-transmission characteristics*

# Adhesives — Test methods for isotropic electrically conductive adhesives —

## Part 7: Environmental test methods

**SAFETY STATEMENT** — Persons using this part of ISO 16525 should be familiar with normal laboratory practice. This part of ISO 16525 does not purport to address all of the safety problems, if any, associated with its use. It is the responsibility of the user to establish appropriate safety and health practices and to ensure compliance with any regulatory conditions.

**IMPORTANT** — Certain procedures specified in this part of ISO 16525 might involve the use or generation of substances, or the generation of waste, that could constitute a local environmental hazard. Reference should be made to appropriate documentation on safe handling and disposal after use.

### 1 Scope

This part of ISO 16525 specifies the environmental test methods (cold, dry heat, damp heat and change of temperature) for isotropic electrically conductive adhesives used in the surface assembly of printed circuit boards of electronic devices.

### 2 Normative references

The following documents, in whole or in part, are normatively referenced in this document and are indispensable for its application. For dated references, only the edition cited applies. For undated references, the latest edition of the referenced document (including any amendments) applies.

ISO 291, *Plastics — Standard atmospheres for conditioning and testing*

ISO 472, *Plastics — Vocabulary*

ISO 527-1, *Plastics — Determination of tensile properties — Part 1: General principles*

IEC 60068-1, *Environmental testing — Part 2: General and guidance*

IEC 60068-2-1, *Environmental testing — Part 2: Tests — Test A: Cold*

IEC 60068-2-2, *Environmental testing — Part 2-2: Tests — Test B: Dry heat*

IEC 60068-2-14, *Environmental testing — Part 2-14: Tests — Test N: Change of temperature*

IEC 60068-2-21, *Environmental testing — Part 2-21: Tests — Test U: Robustness of terminations and integral mounting devices*

IEC 60068-2-67, *Environmental testing — Part 2: Tests — Test Cy: Damp heat, steady-state, accelerated test primarily intended for components*

IEC 61249-2-7, *Materials for printed boards and other interconnecting structures — Part 2-7: Reinforced base materials clad and unclad — Epoxide woven E-glass laminated sheet of defined flammability (vertical burning test), copper-clad*

IEC 62137-1-1, *Surface mounting technology — Environmental and endurance test methods for surface mount solder joint — Part 1-1: Pull strength test*

### 3 Terms and definitions

For the purposes of this document, the terms and definitions given in ISO 291, ISO 472 and IEC 60068-1 and the following apply.

#### 3.1 four-probe resistance measuring method

technique with four probes, using two lead wires to supply an electric current to a specimen and the other two to detect voltage drop due to contact resistance in the specimen

#### 3.2 daisy chain

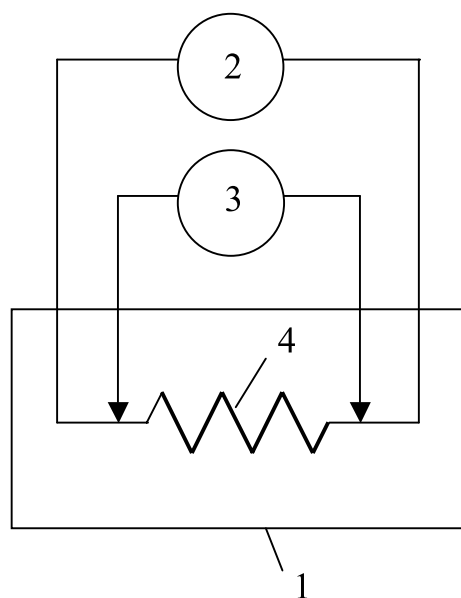
wiring scheme used to measure the durability of electrical connections between bonded portions of component terminals and copper land grid patterns on the substrate

Note 1 to entry: In a daisy chain, components are connected on a circuit board in series using an isotropic electrically conductive adhesive.

### 4 Apparatus and test board

**4.1 Chamber**, capable of maintaining the specified temperature and humidity in an effective space. To maintain uniform temperature and humidity, forced air circulation may be used. For a test that involves a change in temperature, one or two baths may be used.

**4.2 Ohmmeter**, capable of measuring electrical resistance. A specified DC (or AC) current source and a voltmeter in the four-probe measurement circuit shown in [Figure 1](#) shall be used in combination. When monitoring the resistance of a large number of test circuit boards in series, an ohmmeter made of current source and a voltmeter, which can carry out a four-probe resistance measurement, may be combined with a scanner that switches measurement channels for each test circuit board.



**Key**

- |   |                     |   |                     |
|---|---------------------|---|---------------------|
| 1 | test circuit boards | 3 | voltage meter       |
| 2 | current sources     | 4 | measured resistance |

**Figure 1 — Test apparatus of four-probe measurement circuit**



**4.3 Tensile strength apparatus**, as specified in ISO 527-1, which can apply compressive or tensile force to the specimen. The crosshead speed shall be between 5 mm/min and 30 mm/min.

**4.4 Shearing jig**. When using a leadless component, such as a chip resistor, a shearing jig with a tip diameter of 0,5 mm as specified in IEC 60068-2-21 shall be used.

**4.5 Pulling jig**. When using a gull wing-type lead as a test component, such as QFP, a pulling jig as specified in IEC 62137-1-1 shall be used. The test circuit board shall be fixed to a block with an inclination of 45°.

**4.6 Microscope**, simple, with magnification from 50x to 250x and a light that illuminates the specimen at luminance around 2 000 lux shall be used.

**4.7 Test board**, consisting of a glass fabric-based epoxy resin copper-clad laminate as specified in IEC 61249-2-7, unless otherwise specified in the product specifications. When using alternative boards, materials that do not degrade with temperature should be used. Mechanical deformation and board damage should be avoided. At a temperature of 125 °C or higher, ceramic (alumina) boards should preferably be used.

**4.8 Test components**, containing short circuits. Components and the wires of the board shall be connected alternately to make a daisy chain, which links all the bonded portions of adhesives to be tested. It is preferable that the test component be identical to the actual ones in the structure.

## 5 Preparation of test circuit board

Preparation of a test circuit board is specified as follows.

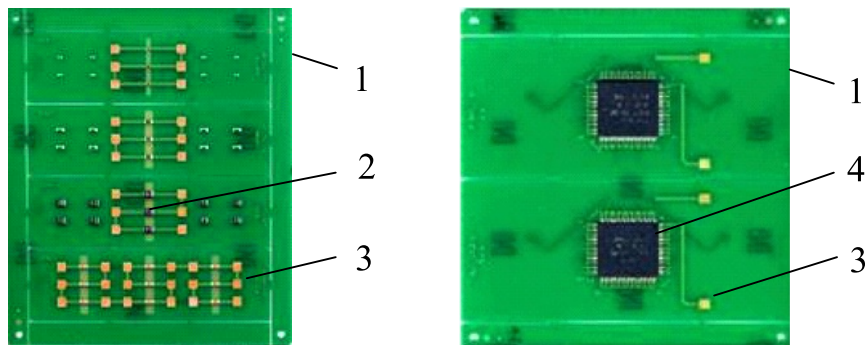
### a) Isotropic electrically conductive adhesive

In terms of general behaviour and procedure, a paste-type isotropic electrically conductive adhesive containing an organic binder (generally, a heat-curing resin) in which metal particles or flakes are dispersed shall be used.

### b) Preparation

An isotropic electrically conductive adhesive shall be applied to the test circuit board using screen-printing and the test components shall be placed on it. For the application and curing of the adhesives, follow the adhesive manufacturer's recommendations. If the manufacturer's recommendations do not refer to the cure schedule, curing should be carried out at 150 °C for 30 min in the atmosphere.

**NOTE** To make a test circuit board, place components at the centre of the test circuit to be bonded. An example is shown in [Figure 2](#). The position of the components on the test circuit board can be altered to an extent unless the test is not affected upon agreement between the delivering and receiving parties.



**Key**

- |   |                     |   |                   |
|---|---------------------|---|-------------------|
| 1 | test circuit boards | 3 | measuring pad     |
| 2 | chip resistance     | 4 | quad flat package |

**Figure 2 — Example of the position of components**

c) Visual inspection

Visual inspection or microscopic inspection shall be carried out to check the appearance and finishing.

**6 Tests**

**6.1 Test items and conditions**

Degrees of severity are described in terms of test temperature and time and are specified in the product specifications. The recommended test conditions shall be selected from among those shown in [Table 1](#). The test temperature should not exceed the glass transition temperature of the specimen component. Test conditions specified in IEC 60068-2 shall be used.

**Table 1 — Test items and conditions**

Item	Normative reference	Test condition	Test time
Cold	IEC 60068-2-1	-25 ± 3 °C	500 h
		-40 ± 3 °C	1 000 h
		-55 °C ± 3 °C	
Dry heat	IEC 60068-2-2	+85 ± 2 °C	500 h
		+100 ± 2 °C	1 000 h
		+125 ± 2 °C	
Damp heat, steady state	IEC 60068-2-67	+85 ± 2 °C, 85 <sup>+2</sup> <sub>-3</sub> %	500 h 1 000 h
Change of temperature	IEC 60068-2-14 Na	-40 <sup>+0</sup> <sub>-10</sub> °C / +85 <sup>+15</sup> <sub>-0</sub> °C	500 cycles 1 000 cycles
		-40 <sup>+0</sup> <sub>-10</sub> °C / +100 <sup>+15</sup> <sub>-0</sub> °C	
		-40 <sup>+0</sup> <sub>-10</sub> °C / +125 <sup>+15</sup> <sub>-0</sub> °C	

**6.2 Procedure**

The test procedure is specified as follows.

a) Initial measurement

Visual inspection of the appearance of the test circuit board and electrical and mechanical measurement shall be carried out in accordance with the specifications.

b) Testing

A test circuit board shall be placed in the test bath in accordance with 6.1. The test shall be started when the temperature has stabilized.

c) Intermediate measurement

Electrical measurements shall be carried out during the test while the test circuit board remains in the bath. The method and time interval of measurement shall be specified. The test circuit board shall not be taken out of the bath for measurement.

d) Final measurement

Visual inspection of the appearance of the test circuit board and electrical and mechanical measurement shall be carried out in accordance with the specifications. Degradation and failures of the bonded portions shall be evaluated after the final measurement, according to test results. Evaluation of the failures shall be made based on the results of both electrical resistance and mechanical strength.

## 7 Test report

The test report shall contain the following items. Some items may be selected from items b) to h) upon agreement between the delivering and receiving parties:

- a) a reference to this part of ISO 16525, i.e. ISO 16525-7;
- b) the name of the isotropic electrically conductive adhesive and its data, including the kinds of resin, filler material, manufacturer's code and lot number;
- c) requirements of the test circuit boards and bonded portions, including material, dimensions and others;
- d) application and bonding procedure of the isotropic electrically conductive adhesive, including curing time or setting time, temperature and pressure of the adhesive procedure;
- e) model numbers of the test chamber, ohmmeter and general testing apparatus;
- f) test items, temperature and time;
- g) results of electrical resistance and adhesive strength;
- h) the date, institution and atmospheric conditions of the test.





# British Standards Institution (BSI)

BSI is the national body responsible for preparing British Standards and other standards-related publications, information and services.

BSI is incorporated by Royal Charter. British Standards and other standardization products are published by BSI Standards Limited.

## About us

We bring together business, industry, government, consumers, innovators and others to shape their combined experience and expertise into standards-based solutions.

The knowledge embodied in our standards has been carefully assembled in a dependable format and refined through our open consultation process. Organizations of all sizes and across all sectors choose standards to help them achieve their goals.

## Information on standards

We can provide you with the knowledge that your organization needs to succeed. Find out more about British Standards by visiting our website at [bsigroup.com/standards](http://bsigroup.com/standards) or contacting our Customer Services team or Knowledge Centre.

## Buying standards

You can buy and download PDF versions of BSI publications, including British and adopted European and international standards, through our website at [bsigroup.com/shop](http://bsigroup.com/shop), where hard copies can also be purchased.

If you need international and foreign standards from other Standards Development Organizations, hard copies can be ordered from our Customer Services team.

## Subscriptions

Our range of subscription services are designed to make using standards easier for you. For further information on our subscription products go to [bsigroup.com/subscriptions](http://bsigroup.com/subscriptions).

With **British Standards Online (BSOL)** you'll have instant access to over 55,000 British and adopted European and international standards from your desktop. It's available 24/7 and is refreshed daily so you'll always be up to date.

You can keep in touch with standards developments and receive substantial discounts on the purchase price of standards, both in single copy and subscription format, by becoming a **BSI Subscribing Member**.

**PLUS** is an updating service exclusive to BSI Subscribing Members. You will automatically receive the latest hard copy of your standards when they're revised or replaced.

To find out more about becoming a BSI Subscribing Member and the benefits of membership, please visit [bsigroup.com/shop](http://bsigroup.com/shop).

With a **Multi-User Network Licence (MUNL)** you are able to host standards publications on your intranet. Licences can cover as few or as many users as you wish. With updates supplied as soon as they're available, you can be sure your documentation is current. For further information, email [bsmusales@bsigroup.com](mailto:bsmusales@bsigroup.com).

## BSI Group Headquarters

389 Chiswick High Road London W4 4AL UK

## Revisions

Our British Standards and other publications are updated by amendment or revision.

We continually improve the quality of our products and services to benefit your business. If you find an inaccuracy or ambiguity within a British Standard or other BSI publication please inform the Knowledge Centre.

## Copyright

All the data, software and documentation set out in all British Standards and other BSI publications are the property of and copyrighted by BSI, or some person or entity that owns copyright in the information used (such as the international standardization bodies) and has formally licensed such information to BSI for commercial publication and use. Except as permitted under the Copyright, Designs and Patents Act 1988 no extract may be reproduced, stored in a retrieval system or transmitted in any form or by any means – electronic, photocopying, recording or otherwise – without prior written permission from BSI. Details and advice can be obtained from the Copyright & Licensing Department.

## Useful Contacts:

### Customer Services

**Tel:** +44 845 086 9001

**Email (orders):** [orders@bsigroup.com](mailto:orders@bsigroup.com)

**Email (enquiries):** [cservices@bsigroup.com](mailto:cservices@bsigroup.com)

### Subscriptions

**Tel:** +44 845 086 9001

**Email:** [subscriptions@bsigroup.com](mailto:subscriptions@bsigroup.com)

### Knowledge Centre

**Tel:** +44 20 8996 7004

**Email:** [knowledgecentre@bsigroup.com](mailto:knowledgecentre@bsigroup.com)

### Copyright & Licensing

**Tel:** +44 20 8996 7070

**Email:** [copyright@bsigroup.com](mailto:copyright@bsigroup.com)



...making excellence a habit.™