

Optics and optical instruments — Test methods for telescopic systems —

Part 1: Test methods for basic characteristics

ICS 37.020

National foreword

This British Standard reproduces verbatim ISO 14490-1:2005 and implements it as the UK national standard.

The UK participation in its preparation was entrusted to Technical Committee CPW/172, Optics and optical instruments, which has the responsibility to:

- aid enquirers to understand the text;
- present to the responsible international/European committee any enquiries on the interpretation, or proposals for change, and keep UK interests informed;
- monitor related international and European developments and promulgate them in the UK.

A list of organizations represented on this committee can be obtained on request to its secretary.

Cross-references

The British Standards which implement international publications referred to in this document may be found in the *BSI Catalogue* under the section entitled “International Standards Correspondence Index”, or by using the “Search” facility of the *BSI Electronic Catalogue* or of British Standards Online.

This publication does not purport to include all the necessary provisions of a contract. Users are responsible for its correct application.

Compliance with a British Standard does not of itself confer immunity from legal obligations.

Summary of pages

This document comprises a front cover, an inside front cover, the ISO title page, pages ii to v, a blank page, pages 1 to 14, an inside back cover and a back cover.

The BSI copyright notice displayed in this document indicates when the document was last issued.

Amendments issued since publication

Amd. No.	Date	Comments

This British Standard was published under the authority of the Standards Policy and Strategy Committee on 12 January 2006

© BSI 12 January 2006

INTERNATIONAL
STANDARD

ISO
14490-1

First edition
2005-10-15

**Optics and optical instruments — Test
methods for telescopic systems —**

**Part 1:
Test methods for basic characteristics**

*Optique et instruments d'optique — Méthodes d'essai pour systèmes
télescopiques —*

Partie 1: Méthodes d'essai des caractéristiques fondamentales



Reference number
ISO 14490-1:2005(E)

Contents

Page

Foreword.....	v
1 Scope	1
2 Normative references	1
3 Terms and definitions	1
4 Method of measurement of the angular magnification	2
4.1 General.....	2
4.2 Test arrangement.....	2
4.3 Procedure	3
4.4 Determination of results	3
4.5 Test report	3
5 Method of measurement of the entrance pupil diameter.....	3
5.1 General.....	3
5.2 Test arrangement.....	3
5.3 Procedure	4
5.4 Determination of results	4
5.5 Test report	4
6 Method of measurement of the exit pupil diameter and eye relief	4
6.1 General.....	4
6.2 Test arrangement.....	5
6.3 Procedure	5
6.4 Determination of results	5
6.5 Test report	6
7 Method of measurement of the angular field of view in the object space	6
7.1 General.....	6
7.2 Test arrangement.....	6
7.3 Procedure	6
7.4 Determination of results	7
7.5 Test report	7
8 Method of measurement of the angular field of view in the image space	7
8.1 General.....	7
8.2 Test arrangement.....	7
8.3 Procedure	8
8.4 Determination of results	9
8.5 Test report	9
9 Method of measurement of the angular field of view in the object space for spectacle wearers	9
9.1 General.....	9
9.2 Test arrangement.....	9
9.3 Procedure	9
9.4 Determination of results	11
9.5 Test report	11
10 Method of measurement of the collimation of rays emergent from the eyepiece	11
10.1 General.....	11
10.2 Test arrangement.....	11
10.3 Procedure	12
10.4 Determination of results	12
10.5 Test report	12

11	Method of measurement of the image rotation.....	12
11.1	General.....	12
11.2	Test arrangement.....	12
11.3	Procedure.....	13
11.4	Determination of results.....	13
11.5	Test report.....	13
12	Method of determination of the closest distance of observation.....	14
12.1	General.....	14
12.2	Test arrangement.....	14
12.3	Procedure.....	14
12.4	Determination of results.....	14
12.5	Test report.....	14
13	General test report.....	14

Licensed copy: İstanbul Teknik Üniversitesi, İstanbul Teknik Üniversitesi, Version correct as of 27/08/2015

Foreword

ISO (the International Organization for Standardization) is a worldwide federation of national standards bodies (ISO member bodies). The work of preparing International Standards is normally carried out through ISO technical committees. Each member body interested in a subject for which a technical committee has been established has the right to be represented on that committee. International organizations, governmental and non-governmental, in liaison with ISO, also take part in the work. ISO collaborates closely with the International Electrotechnical Commission (IEC) on all matters of electrotechnical standardization.

International Standards are drafted in accordance with the rules given in the ISO/IEC Directives, Part 2.

The main task of technical committees is to prepare International Standards. Draft International Standards adopted by the technical committees are circulated to the member bodies for voting. Publication as an International Standard requires approval by at least 75 % of the member bodies casting a vote.

Attention is drawn to the possibility that some of the elements of this document may be the subject of patent rights. ISO shall not be held responsible for identifying any or all such patent rights.

ISO 14490-1 was prepared by Technical Committee ISO/TC 172, *Optics and photonics*, Subcommittee SC 4, *Telescopic systems*.

ISO 14490 consists of the following parts, under the general title *Optics and optical instruments — Test methods for telescopic systems*:

- *Part 1: Test methods for basic characteristics*
- *Part 2: Test methods for binocular systems*
- *Part 3: Test methods for telescopic sights*
- *Part 4: Test methods for astronomical telescopes*
- *Part 5: Test methods for transmittance*
- *Part 6: Test methods for veiling glare index*
- *Part 7: Test methods for limit of resolution*

The following part is under preparation:

- *Part 8: Test methods for night-vision devices*

Optics and optical instruments — Test methods for telescopic systems —

Part 1: Test methods for basic characteristics

1 Scope

This part of ISO 14490 specifies the test methods for the determination of the following basic characteristics of telescopic systems and observational telescopic instruments:

- angular magnification (see Clause 4);
- entrance pupil diameter (see Clause 5);
- exit pupil diameter and eye relief (see Clause 6);
- angular field of view in the object space (see Clause 7);
- angular field of view in the image space (see Clause 8);
- angular field of view in the object space for spectacle wearers (see Clause 9);
- collimation of the bundle of rays emergent from the eyepiece (see Clause 10);
- image rotation (see Clause 11);
- closest distance of observation (see Clause 12).

2 Normative references

The following referenced documents are indispensable for the application of this document. For dated references, only the edition cited applies. For undated references, the latest edition of the referenced document (including any amendments) applies.

ISO 14132-1:2002, *Optics and optical instruments — Vocabulary for telescopic systems — Part 1: General terms and alphabetical indexes of terms in ISO 14132*

3 Terms and definitions

For the purposes of this document, the terms and definitions given in ISO 14132-1 apply.

4 Method of measurement of the angular magnification

4.1 General

In accordance with ISO 14132-1, the angular magnification Γ of a telescopic system is defined by the following equation:

$$\Gamma = \frac{\tan w'}{\tan w} \approx \frac{w'}{w} \quad (1)$$

where w and w' are angles that the axes of conjugate beams make with the optical axis in the object space and image space, respectively.

The method of measurement of the angular magnification is based on the measurement of the angular size of an object placed in the field of view of a test specimen and that of its image.

4.2 Test arrangement

Measurement of the magnification shall be carried out with the angular test arrangement shown in Figure 1.

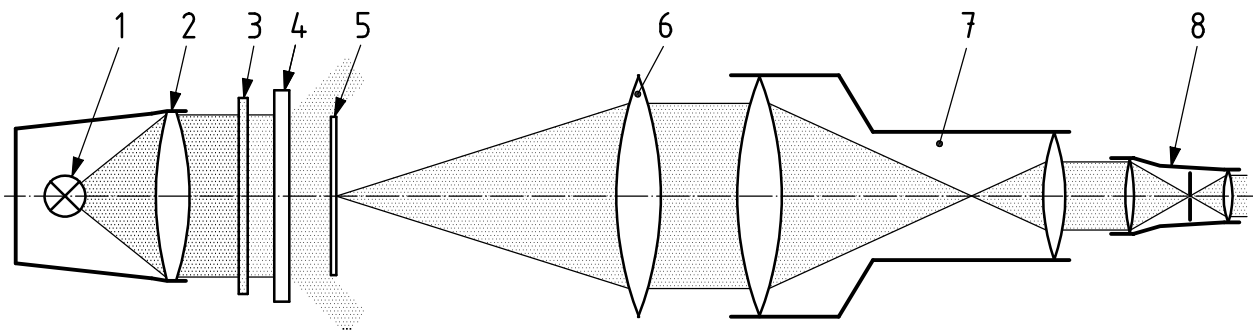
For systems for which the magnification is to be measured under a focus setting other than infinity, the collimator scale shall be adjusted in order to form the image of the scale at the specified distance from the test specimen.

The test arrangement shall be provided with a green optical filter to avoid any chromatism of the image. The maximum transmittance of the filter shall be at a wavelength of about 0,55 μm .

As an optical angular measuring device, one of the following shall be used:

- a telescope with a scale having divisions of known angular size;
- a telescope with a micrometer eyepiece;
- any other angle-measuring device which assures the required measurement precision.

The same method should be used for Galilean telescopes.



Key

- | | |
|-------------------|-------------------------------------|
| 1 light source | 5 scale |
| 2 condenser | 6 collimator lens |
| 3 filter | 7 test specimen |
| 4 diffusing plate | 8 optical angle measuring telescope |

Figure 1 — Test arrangement for measurement of the angular magnification

4.3 Procedure

Before starting the measurements, adjust the eyepiece of the test specimen to 0 m^{-1} and focus the test specimen onto an infinitely remote object.

Determine the number of telescope (8 in Figure 1) scale divisions covered by an integral number of collimator scale (5 in Figure 1) image divisions produced by the test specimen.

If a telescope with a micrometer eyepiece is used, measure the angular size of the image of a part of the collimator scale (5 in Figure 1) produced by the test specimen.

4.4 Determination of results

The magnification Γ that is to be found is defined as the ratio of the size of the image of the collimator scale (5 in Figure 1) produced by the telescope to the size of the corresponding part of the collimator scale.

For the case in which a telescope with a micrometer eyepiece is used

$$\Gamma = \frac{n \cdot a_1}{m \cdot a_2} \quad (2)$$

where

n is the number of divisions of the telescope (8 in Figure 1) scale that corresponds to the number of divisions m of the collimator scale (5 in Figure 1) image;

a_1 is the scale division value of the measuring telescope scale;

a_2 is the scale division value of the collimator scale.

The uncertainty of magnification shall be less than one third of the maximum deviation from the nominal value specified in the relevant specification standard. For calculation of the magnification difference between the telescopes of a binocular having a magnification of $6\times$ or more, this tolerance shall be reduced by half.

4.5 Test report

A test report shall be presented and shall include the general information specified in Clause 13 and the result of the test as specified in 4.4.

5 Method of measurement of the entrance pupil diameter

5.1 General

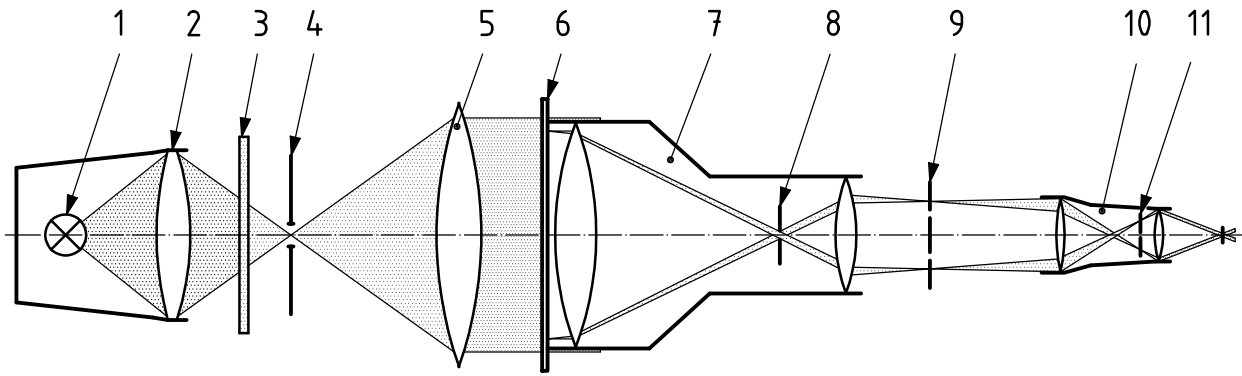
The method of measurement of the entrance pupil diameter D is based on viewing a reticle which is placed near the entrance pupil through the test specimen and reading off the linear size of the entrance pupil diameter.

5.2 Test arrangement

For a schematic representation of the test arrangement see Figure 2.

The test arrangement shall be provided with a green optical filter to avoid any chromatism of the image. The maximum transmittance of the filter should be at a wavelength of about $0,55 \mu\text{m}$.

The same method shall be used for Galilean telescopes.



Key

- | | | |
|----------------|----------------------|--------------------------------|
| 1 light source | 5 collimator lens | 9 exit pupil; reticle optional |
| 2 condenser | 6 reticle | 10 magnifier or microscope |
| 3 filter | 7 test specimen | 11 scale |
| 4 pinhole | 8 intermediate image | |

Figure 2 — Test arrangement for the measurement of the entrance pupil diameter

5.3 Procedure

To measure the entrance pupil diameter, set a reticle with a fixed scale (or two adjustable knife edges) immediately in front of the test specimen's objective lens.

Illuminate the reticle marks (or knife edges) with a collimator. Position a field stop, whose apparent size may not exceed three arc minutes, in the focal plane of the collimator.

Use a microscope or a magnifier behind the eyepiece of the test specimen. Determine which two reticle marks are coincident with the edges of the entrance pupil (or adjust the knife edges to be coincident with the edges of the entrance pupil).

The distance between the reticle marks (or knife edges) coincident with the edges of the entrance pupil is equal to the entrance pupil diameter.

5.4 Determination of results

The result is determined by reading off the distance (in mm) between the reticle marks (or knife edges).

The distance between the reticle marks (or knife edges) in front of the lens can easily be determined with a precision of 0,1 mm. In order to make sure the uncertainty is less than 1 %, a microscope or magnifier of sufficient magnification shall be chosen appropriately for the specimen being tested.

5.5 Test report

A test report shall be presented and shall include the general information specified in Clause 13 and the result of the test as specified in 5.4.

6 Method of measurement of the exit pupil diameter and eye relief

6.1 General

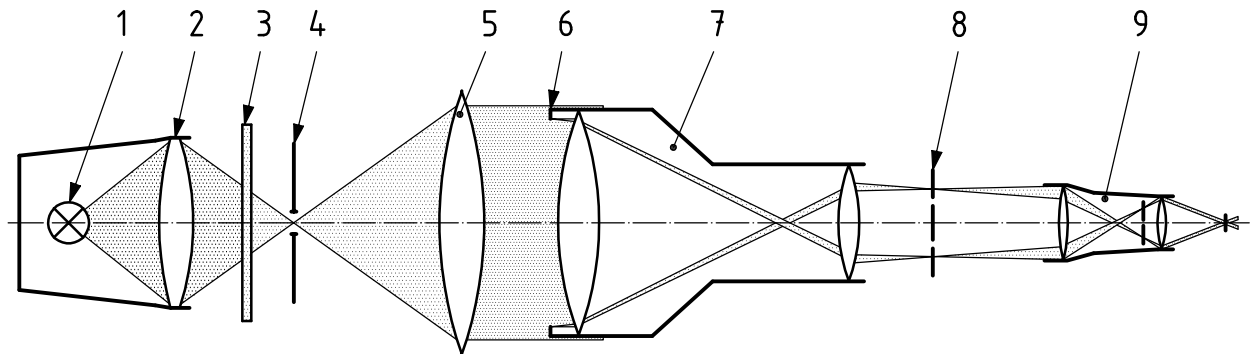
The exit pupil diameter D' is defined to be the size of the image of the entrance pupil produced by the test specimen.

The eye relief l' is defined as the distance of the exit pupil from the vertex of the last optical surface of the eyepiece.

6.2 Test arrangement

The exit pupil diameter of the test specimen and the eye relief shall be measured with the test arrangement shown in Figure 3.

The test arrangement shall be provided with a green optical filter to avoid any chromatism of the image. The maximum transmittance of the filter shall be at a wavelength of about 0,55 μm .



Key

1 light source	4 pinhole	7 test specimen
2 condenser	5 collimator lens	8 exit pupil; reticle optional
3 filter	6 entrance pupil	9 measuring microscope

Figure 3 — Test arrangement for the measurement of the exit pupil diameter and eye relief

6.3 Procedure

Before starting the measurements, adjust the eyepiece of the test specimen to 0 m^{-1} and focus the test specimen onto an infinitely remote object.

To measure the diameter of the exit pupil, focus the measuring microscope onto the exit pupil. Bring the image of the pupil into coincidence with the microscope reticle scale and count the number of scale divisions covering the diameter of the exit pupil image.

To measure the eye relief, focus the measuring microscope first onto the exit pupil, then onto the vertex of the last refracting surface of the test specimen.

6.4 Determination of results

Calculate the exit pupil diameter D' (in mm) in accordance with the equation

$$D' = n \cdot K \quad (3)$$

where

n is the number of scale divisions covering the exit pupil diameter of the test specimen;

K is the linear scale division value, in millimetres, of the measuring microscope.

Determine the eye relief l' (in mm) as the difference of readouts from the external scale of the measuring microscope during its axial travel:

$$l' = (a_1 - a_2)K_1 \quad (4)$$

where

a_1 and a_2 are the readouts from the external scale of the measuring microscope when it is focused on the exit pupil and on the last refracting surface of the eyepiece of the test specimen;

K_1 is the scale value of the external scale of the measuring microscope, in mm, per scale division.

The uncertainty of the exit pupil diameter shall be within $\pm 1\%$ of the nominal value.

The uncertainty of the eye relief shall be within $\pm 3\%$ of the nominal value.

6.5 Test report

A test report shall be presented and shall include the general information specified in Clause 13 and the result of the test as specified in 6.4.

7 Method of measurement of the angular field of view in the object space

7.1 General

The angular field of view 2ω is defined as the extent of the object space, in angular measure, observed through the telescopic system.

7.2 Test arrangement

The angular field of view in the object space shall be measured with the test arrangement shown in Figure 4.

An angular scale shall be placed in the focal plane of the wide-angle collimator.

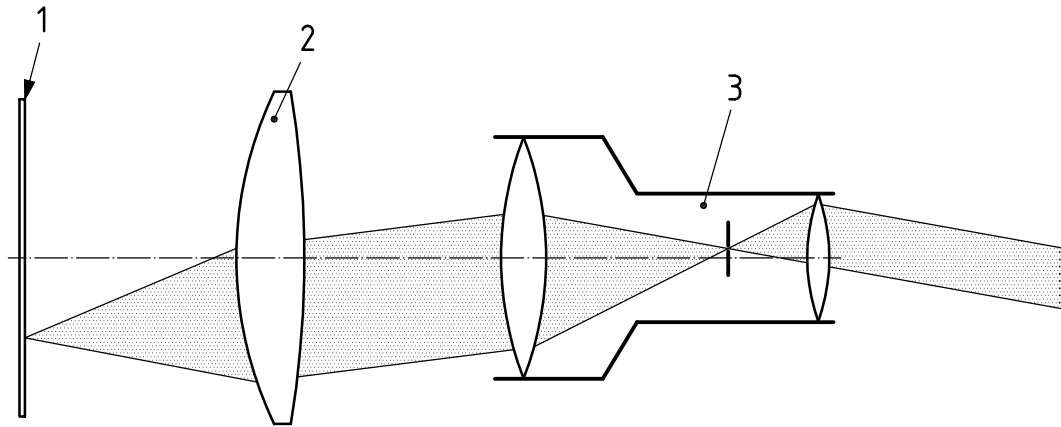
For systems that require the angular field of view in the object space to be measured with a focus other than infinity, the collimator scale shall be adjusted in order to form the image of the scale at the specified distance from the test specimen.

7.3 Procedure

Install the test specimen lined-up in front of the collimator lens.

Adjust the eyepiece of the test specimen to 0 m^{-1} , then focus the test specimen to obtain a sharp image of the collimator scale.

During observation through the test specimen, count the number of the collimator scale divisions that cover the test specimen's field of view.

**Key**

- 1 scale
- 2 wide-angle collimator lens
- 3 test specimen

Figure 4 — Test arrangement for the measurement of the angular field of view in the object space

Alternatively, the field of view may be measured by means of a goniometer. The test specimen should be placed in front of the collimator lens onto a rotational stage (which rotates about a vertical axis). A vertical line at the focal plane of the collimator lens should alternately be brought into coincidence with the right and left edge of the field stop of the test specimen. The field of view in the object space is determined by the difference between the angular readouts at the two positions.

7.4 Determination of results

Calculate the value of the full angular field of view 2ω (degree, minute of angle) by multiplication of the number of scale divisions m by the collimator scale division value b (degree, minute of angle):

$$2\omega = b \cdot m \quad (5)$$

For Keplerian telescopes, the uncertainty shall be less than $5'$. The image quality of the test specimen has an influence on the uncertainty.

7.5 Test report

A test report shall be presented and shall include the general information specified in Clause 13 and the result of the test as specified in 7.4.

8 Method of measurement of the angular field of view in the image space

8.1 General

The size of the angular field of view in the image space $2\omega'$ is determined by means of an angular measurement.

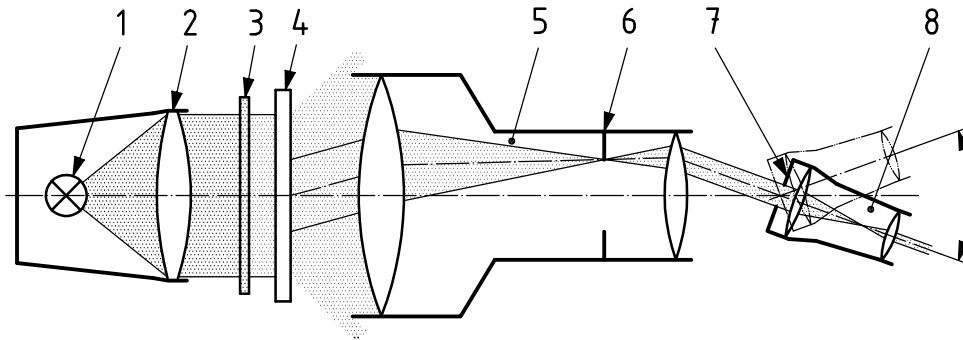
8.2 Test arrangement

On the eyepiece-side of the test specimen, an auxiliary telescope is mounted on a rotation table with an angle-measuring device.

An auxiliary telescope with approximately threefold magnification, an entrance pupil diameter of about 3 mm and a bearing mark (e.g. cross wire) should be used.

In order to suppress colour fringes in the image, the use of green light (wavelength about 0,55 μm) is recommended.

See Figure 5 for a schematic representation of the test arrangement for specimens with a real exit pupil.



Key

- | | |
|-------------------|--------------------------|
| 1 light source | 5 test specimen |
| 2 condenser | 6 field stop |
| 3 filter | 7 position of exit pupil |
| 4 diffusing plate | 8 auxiliary telescope |

Figure 5 — Test arrangement for the measurement of the angular field of view in the image space for test specimens with a real exit pupil

8.3 Procedure

8.3.1 Test specimens with a real exit pupil

The rotation axis of the auxiliary telescope (8 in Figure 5) lies in coincidence with the exit pupil (7 in Figure 5) and in the plane of the entrance pupil of the auxiliary telescope. The rotation axis intersects at right angles the optical axis of the test specimen (5 in Figure 5) and the optical axis of the auxiliary telescope.

With the auxiliary telescope (8 in Figure 5) focused on the field stop (6 in Figure 5) of the test specimen (5 in Figure 5), rotate the telescope to successively place its bearing mark on opposite edges of the field of view.

Read the angle difference from the scale of the rotation device.

8.3.2 Test specimens with a virtual exit pupil

On the objective lens side of the test specimen, position a collimator with target marks for the object space field of view of the test specimen.

Place a stop with an aperture of 5 mm diameter at a distance of 8 mm from the last optical surface of the test specimen. The rotation axis of the auxiliary telescope is also 8 mm behind the back vertex of the last eyepiece surface and close to the plane of the entrance pupil of the auxiliary telescope. The rotation axis intersects at right angles the optical axis of the test specimen and the optical axis of the auxiliary telescope

With the auxiliary telescope (8 in Figure 5) focused on the collimator target marks, rotate the telescope to successively place its bearing mark on opposite edges of the field of view.

Read the angle difference from the scale of the rotation device.

8.4 Determination of results

The result of the measurement is determined by reading the angle difference (in degrees) from the scale of the rotation device.

The uncertainty shall be less than 20'. The image quality of the test specimen has an influence on the uncertainty.

8.5 Test report

A test report shall be presented and shall include the general information specified in Clause 13 and the result of the test as specified in 8.4.

9 Method of measurement of the angular field of view in the object space for spectacle wearers

9.1 General

Due to the fact that during observation through a telescopic system by a spectacle wearer, the position of his/her eye can differ significantly from that without spectacles, the angular field of view in the object space for spectacle wearers is specified separately when required. For such an occasion, a standard method of measurement of the specified parameter is needed.

9.2 Test arrangement

The angular field of view in the object space for spectacle wearers shall be measured with the test arrangement shown in Figure 6.

The measurement is made by means of the adapter shown in Figure 7 that consists of a spectacle lens without optical power and a stop of 3 mm diameter positioned behind the spectacle lens. The stop represents the eye pupil under daylight conditions.

The distance between the stop and the front vertex of the spectacle lens shall be 19 mm. This correlates with a corneal vertex distance of about 14 mm for European types of faces.

An angular scale shall be placed in the focal plane of the wide-angle collimator.

For systems that require the angular field of view in the object space for spectacle wearers to be measured with a focus setting other than infinity, the collimator scale shall be adjusted in order to form the image of the scale at the specified distance from the test specimen.

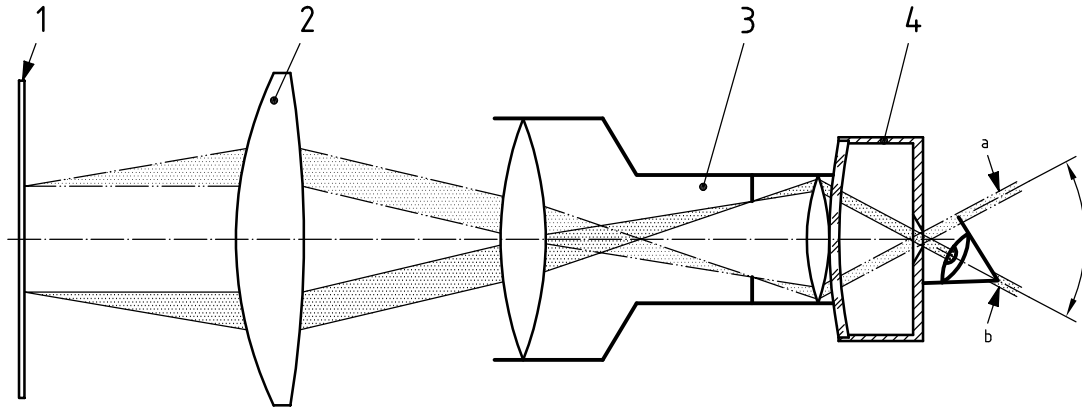
9.3 Procedure

Line up the test specimen in front of the collimator lens.

Adjust the eyepiece of the test specimen to 0 m⁻¹, then focus the test specimen to obtain a sharp image of the collimator scale.

Adjust the eye cups in the position specified by the manufacturer for observation with spectacles. Fix the adapter behind the eyepiece of the test specimen perpendicular to the optical axis. With this arrangement, bring the eye as close as possible to the adapter's hole and observe the scale placed in the focal plane of the collimator.

During observation through the test specimen, count the number of the collimator scale divisions that cover the test specimen's remaining field of view.



Key

- 1 scale
- 2 wide-angle collimator lens
- 3 test specimen
- 4 adapter (see Figure 7)
- a Test position 1.
- b Test position 2.

Figure 6 — Test arrangement for the measurement of the angular field of view in the object space for spectacle wearers

Dimensions in millimetres

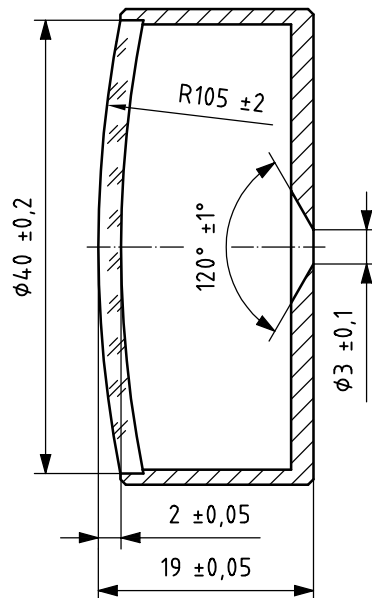


Figure 7 — Adapter for the measurement of the angular field of view in the object space for spectacle wearers

Alternatively, the field of view may be measured by means of a goniometer. The test specimen should be placed in front of the collimator lens onto the rotational stage (around the vertical axis). A vertical line at the focal plane of the collimator lens should alternately be brought into coincidence with the right and left edge of the field stop of the test specimen. The field of view in the object space is determined by the difference between the angular readouts at the two positions.

9.4 Determination of results

Calculate the value of the angular field of view for spectacle wearers $2\omega_s$ (degree, minute of angle) by multiplication of the number of scale divisions m by the collimator scale division value b (degree, minute of angle):

$$2\omega_s = b \cdot m \quad (6)$$

For Keplerian telescopes, the uncertainty shall be less than $10'$. The image quality of the test specimen has an influence on the uncertainty.

9.5 Test report

A test report shall be presented and shall include the general information specified in Clause 13 and the result of the test as specified in 9.4.

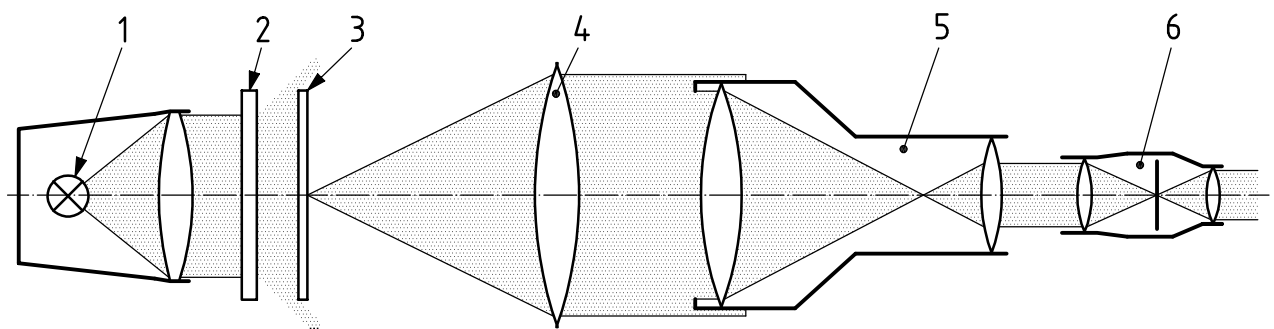
10 Method of measurement of the collimation of rays emergent from the eyepiece

10.1 General

The collimation of rays emergent from the eyepiece of the telescopic system shall be measured to ensure that the dioptric scale has been manufactured and assembled adequately and to determine the focusing range of the system.

10.2 Test arrangement

The collimation shall be measured with the test arrangement shown in Figure 8.



Key

- | | | | |
|---|--------------|---|-----------------|
| 1 | light source | 4 | collimator lens |
| 2 | diffuser | 5 | test specimen |
| 3 | test target | 6 | dioptric tester |

Figure 8 — Test arrangement for the measurement of the collimation

A test target of either the bar or reticle type shall be placed in the focal plane of the collimator lens. The light source consists of an incandescent lamp and a condenser. The light-scattering plate shall be a diffusing plate.

For systems that require the collimation to be measured with a focus other than infinity, the target shall be adjusted in order to obtain its image at the specified distance from the test specimen.

The test arrangement shall be provided with a green optical filter to avoid any chromatism of the image. The maximum transmittance of the filter should be at a wavelength of about 0,55 μm .

10.3 Procedure

Focus the eyepiece of the dioptric tester for the observer's eye to obtain a sharp image of the tester's reticle. Set the objective lens of the dioptric tester to zero position by means of the dioptre scale.

Install the test specimen in front of the collimator lens; place the dioptric tester lined-up behind the eyepiece.

By rotation of the eyepiece or by means of the focus adjustment mechanism in the test specimen, adjust the specified collimation of rays emergent from the eyepiece. While observing the target image through the eyepiece of the dioptric tester, obtain its sharp image and take the readout of the measured collimation from the dioptre scale.

Repeat the measurements at least three times.

10.4 Determination of results

Calculate the measured value of collimation (in dioptres; m^{-1}) from the arithmetic mean of three readouts from the dioptric scale. The uncertainty shall not exceed $\pm 0,3 \text{ m}^{-1}$.

10.5 Test report

A test report shall be presented and shall include the general information specified in Clause 13 and the result of the test as specified in 10.4.

11 Method of measurement of the image rotation

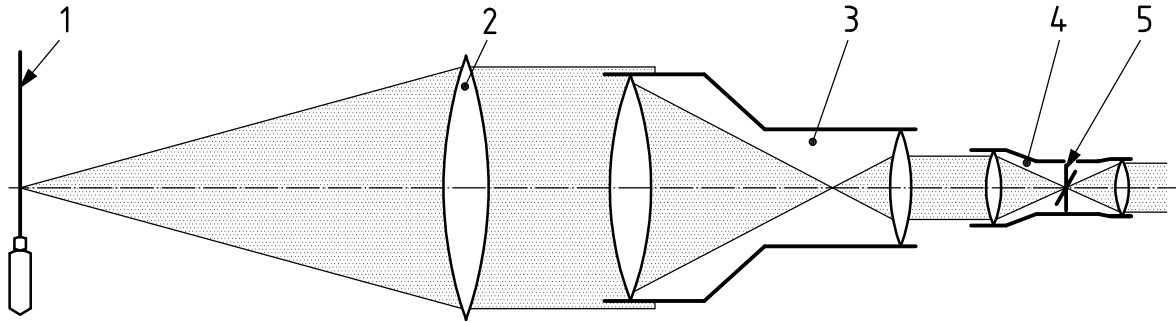
11.1 General

In accordance with ISO 14132-1, the image rotation is the angular displacement, in the plane normal to the optical axis, of the image relative to the object itself that appears in viewing through a monocular test specimen that contains prisms or mirrors.

11.2 Test arrangement

The measurement of the image rotation shall be carried out by means of the test arrangement shown in Figure 9.

The vertical plumb-line (or horizon) (1) is situated in the focal plane of the collimator. The auxiliary telescope (4) shall be provided with a reticle (5) bearing a vertical (horizontal) line and a scale (or mechanism) for measuring the angles of rotation of the line (1) in relation to the reticle line (5).



Key

- 1 horizon or vertical plumb-line
- 2 collimator lens
- 3 test specimen
- 4 auxiliary telescope
- 5 reticle

Figure 9 — Test arrangement for the measurement of the image rotation

11.3 Procedure

In the absence of the test specimen, position the vertical (horizontal) line of the reticle (5 in Figure 9) of the auxiliary telescope (4 in Figure 9) parallel to the vertical (horizontal) line (1 in Figure 9).

Install the test specimen. Measure the tilt angle of the image of the vertical (horizontal) line formed by the test specimen seen within the auxiliary telescope (4 in Figure 9) by means of its angular scale (or mechanism).

See Figure 10.

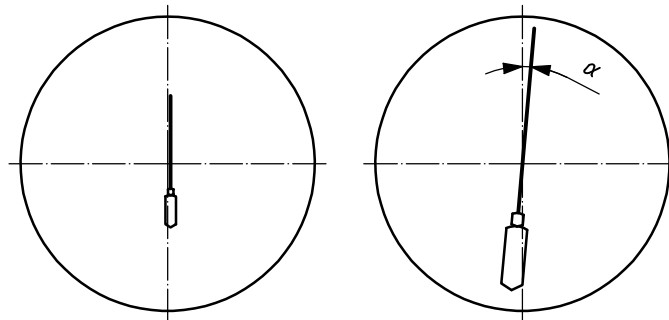


Figure 10 — View through the auxiliary telescope without and with the test specimen

11.4 Determination of results

Calculate the measured value, in minutes of arc, from the arithmetic mean of three readouts from the scale.

The uncertainty shall be within $\pm 5'$.

11.5 Test report

A test report shall be presented and shall include the general information specified in Clause 13 and the result of the test as specified in 11.4.

12 Method of determination of the closest distance of observation

12.1 General

In accordance with ISO 14132-1, the minimum distance of observation is the shortest distance from the first optical surface of the objective of the test specimen to the object of observation subject to maximum achievable refocusing of the test specimen.

12.2 Test arrangement

An auxiliary telescope is positioned behind the eyepiece of the test specimen.

12.3 Procedure

Adjust the focusing mechanism or eyepiece of the test specimen to the position that corresponds to the minimum distance of observation.

During movement of the test specimen and the auxiliary telescope, or a plane test target along the optical axis, define the minimum distance that provides a sharp image of the test target.

12.4 Determination of results

Calculate the measured value, in metres, from the arithmetic mean of three readouts from the scale.

The uncertainty shall not exceed 10 %.

12.5 Test report

A test report shall be presented and shall include the general information specified in Clause 13 and the result of the test as specified in 12.4.

13 General test report

In addition to the presentation of the test results for each test method, the following information, if applicable, shall be provided in each test report:

- a) name of test laboratory;
- b) name of examiner;
- c) date of test;
- d) identification of the test specimen;
- e) details about the test arrangement and/or procedure, if required, and/or if different from those specified in the relevant test method of the ISO 14490 series;
- f) a reference to this part of ISO 14490 (ISO 14490-1:2005) as well as to any other part of ISO 14490 used for testing telescopic systems.

If the test report is intended to give the result of more than one test in accordance with ISO 14490 (all parts), the general information specified in a) to f) above will usually only be given once for all tests.

BSI — British Standards Institution

BSI is the independent national body responsible for preparing British Standards. It presents the UK view on standards in Europe and at the international level. It is incorporated by Royal Charter.

Revisions

British Standards are updated by amendment or revision. Users of British Standards should make sure that they possess the latest amendments or editions.

It is the constant aim of BSI to improve the quality of our products and services. We would be grateful if anyone finding an inaccuracy or ambiguity while using this British Standard would inform the Secretary of the technical committee responsible, the identity of which can be found on the inside front cover.
Tel: +44 (0)20 8996 9000. Fax: +44 (0)20 8996 7400.

BSI offers members an individual updating service called PLUS which ensures that subscribers automatically receive the latest editions of standards.

Buying standards

Orders for all BSI, international and foreign standards publications should be addressed to Customer Services. Tel: +44 (0)20 8996 9001.
Fax: +44 (0)20 8996 7001. Email: orders@bsi-global.com. Standards are also available from the BSI website at <http://www.bsi-global.com>.

In response to orders for international standards, it is BSI policy to supply the BSI implementation of those that have been published as British Standards, unless otherwise requested.

Information on standards

BSI provides a wide range of information on national, European and international standards through its Library and its Technical Help to Exporters Service. Various BSI electronic information services are also available which give details on all its products and services. Contact the Information Centre.
Tel: +44 (0)20 8996 7111. Fax: +44 (0)20 8996 7048. Email: info@bsi-global.com.

Subscribing members of BSI are kept up to date with standards developments and receive substantial discounts on the purchase price of standards. For details of these and other benefits contact Membership Administration.
Tel: +44 (0)20 8996 7002. Fax: +44 (0)20 8996 7001.
Email: membership@bsi-global.com.

Information regarding online access to British Standards via British Standards Online can be found at <http://www.bsi-global.com/bsonline>.

Further information about BSI is available on the BSI website at <http://www.bsi-global.com>.

Copyright

Copyright subsists in all BSI publications. BSI also holds the copyright, in the UK, of the publications of the international standardization bodies. Except as permitted under the Copyright, Designs and Patents Act 1988 no extract may be reproduced, stored in a retrieval system or transmitted in any form or by any means – electronic, photocopying, recording or otherwise – without prior written permission from BSI.

This does not preclude the free use, in the course of implementing the standard, of necessary details such as symbols, and size, type or grade designations. If these details are to be used for any other purpose than implementation then the prior written permission of BSI must be obtained.

Details and advice can be obtained from the Copyright & Licensing Manager.
Tel: +44 (0)20 8996 7070. Fax: +44 (0)20 8996 7553.
Email: copyright@bsi-global.com.