

**Hydrometric  
determinations —  
Flow measurements in  
open channels using  
structures —  
Compound gauging  
structures**

ICS 17.120.20

## National foreword

This British Standard reproduces verbatim ISO 14139:2000 and implements it as the UK national standard. It supersedes BS 3680-4D:1989 which is withdrawn.

The UK participation in its preparation was entrusted by Technical Committee CP/113, Hydrometry, to Subcommittee CPI/113/2, Notches, weirs and flumes, which has the responsibility to:

- aid enquirers to understand the text;
- present to the responsible international/European committee any enquiries on the interpretation, or proposals for change, and keep the UK interests informed;
- monitor related international and European developments and promulgate them in the UK.

This standard states that it is mandatory to include divide piers between adjacent sections of compound gauging structures. This recommendation was originally made because of a lack of information on the performance of structures without divide piers. Research has now been carried out on structures without divide piers and this research has shown that gross errors can arise if divide piers are omitted, thus confirming the original recommendation.

A list of organizations represented on this subcommittee can be obtained on request to its secretary.

### Cross-references

The British Standards which implement international publications referred to in this document may be found in the BSI Standards Catalogue under the section entitled "International Standards Correspondence Index", or by using the "Find" facility of the BSI Standards Electronic Catalogue.

A British Standard does not purport to include all the necessary provisions of a contract. Users of British Standards are responsible for their correct application.

**Compliance with a British Standard does not of itself confer immunity from legal obligations.**

### Summary of pages

This document comprises a front cover, an inside front cover, the ISO title page, pages ii to iv, pages 1 to 41 and a back cover.

The BSI copyright notice displayed in this document indicates when the document was last issued.

### Amendments issued since publication

Amd. No.	Date	Comments

This British Standard, having been prepared under the direction of the Sector Committee for Materials and Chemicals, was published under the authority of the Standards Committee and comes into effect on 15 August 2000

© BSI 08-2000

# INTERNATIONAL STANDARD

# ISO 14139

First edition  
2000-06-15

---

---

## **Hydrometric determinations — Flow measurements in open channels using structures — Compound gauging structures**

*Déterminations hydrométriques — Mesure de débit des liquides dans les  
canaux découverts au moyen de structures — Structures de jaugeage  
hybrides*



Reference number  
ISO 14139:2000(E)



# Contents

Page

Foreword.....	iv
<b>1 Scope .....</b>	<b>1</b>
<b>2 Normative references .....</b>	<b>1</b>
<b>3 Terms, definitions and symbols.....</b>	<b>2</b>
<b>4 Characteristics of compound gauging structures .....</b>	<b>3</b>
<b>5 Installation .....</b>	<b>4</b>
5.1 Selection of site .....	4
5.2 Installation conditions.....	5
<b>6 Maintenance .....</b>	<b>6</b>
<b>7 Measurement of head .....</b>	<b>7</b>
7.1 General.....	7
7.2 Stilling well .....	7
7.3 Zero setting .....	8
7.4 Location of head measurement section(s) .....	8
<b>8 Computation of discharge .....</b>	<b>8</b>
8.1 Modular flow conditions .....	8
8.2 Non-modular (drowned) flow conditions .....	9
<b>9 Errors in flow measurement .....</b>	<b>9</b>
9.1 General.....	9
9.2 Sources of error .....	9
9.3 Kinds of error .....	9
9.4 Errors in coefficient values and errors in measurement.....	10
9.5 Combinations of uncertainties to give overall uncertainty in total discharge .....	10
9.6 Presentation of results.....	11
<b>Annex A (normative) Velocity distribution .....</b>	<b>12</b>
<b>Annex B (normative) Non-modular (drowned) flow.....</b>	<b>14</b>
<b>Annex C (normative) Methods of calculations.....</b>	<b>24</b>

## Foreword

ISO (the International Organization for Standardization) is a worldwide federation of national standards bodies (ISO member bodies). The work of preparing International Standards is normally carried out through ISO technical committees. Each member body interested in a subject for which a technical committee has been established has the right to be represented on that committee. International organizations, governmental and non-governmental, in liaison with ISO, also take part in the work. ISO collaborates closely with the International Electrotechnical Commission (IEC) on all matters of electrotechnical standardization.

International Standards are drafted in accordance with the rules given in the ISO/IEC Directives, Part 3.

Draft International Standards adopted by the technical committees are circulated to the member bodies for voting. Publication as an International Standard requires approval by at least 75 % of the member bodies casting a vote.

Attention is drawn to the possibility that some of the elements of this International Standard may be the subject of patent rights. ISO shall not be held responsible for identifying any or all such patent rights.

International Standard ISO 14139 was prepared by Technical Committee ISO/TC 113, *Hydrometric determinations*, Subcommittee SC 2, *Notches, weirs and flumes*.

Annexes A to C form a normative part of this International Standard.

# Hydrometric determinations — Flow measurements in open channels using structures — Compound gauging structures

## 1 Scope

This International Standard specifies the methods of measurement of flow in rivers and artificial channels, using any combination of standard weirs and/or flumes in a compound structure. For guidance on the selection of weirs and/or flumes, refer to ISO 8368. All structures can be operated in the modular flow range, but only a limited number of structures can be used in the drowned (non-modular) flow range (see clause 4). Compound weirs improve the quality of discharge measurements at low stages.

The characteristics of velocity distribution are described annex A.

Structures standardized for operation in the drowned (non-modular) flow range and the method of computation of flow are described in annex B.

Methods and examples of flow measurement calculations are given in annex C.

Compound flow-measuring structures without divide piers need in situ or model calibrations and are not covered by this International Standard.

## 2 Normative references

The following normative documents contain provisions which, through reference in this text, constitute provisions of this International Standard. For dated references, subsequent amendments to, or revisions of, any of these publications do not apply. However, parties to agreements based on this International Standard are encouraged to investigate the possibility of applying the most recent editions of the normative documents indicated below. For undated references, the latest edition of the normative document referred to applies. Members of ISO and IEC maintain registers of currently valid International Standards.

ISO 772:1996, *Hydrometric determinations — Vocabulary and symbols*.

ISO 1438-1:1980, *Water flow measurement in open channels using weirs and Venturi flumes — Part 1: Thin-plate weirs*.

ISO 3846:1989, *Liquid flow measurement in open channels by weirs and flumes — Rectangular broad-crested weirs*.

ISO 4359:1983, *Liquid flow measurement in open channels — Rectangular, trapezoidal and U-shaped flumes*.

ISO 4360:1984, *Liquid flow measurement in open channels by weirs and flumes — Triangular profile weirs*.

ISO 4362:1999, *Hydrometric determinations — Flow measurement in open channels using structures — Trapezoidal broad-crested weirs*.

ISO 4374:1990, *Liquid flow measurement in open channels — Round-nose horizontal broad-crested weirs*.

ISO 4377:1990, *Liquid flow measurement in open channels — Flat-V weirs*.

ISO/TR 5168:1998, *Measurement of fluid flow — Evaluation of uncertainties.*

ISO 8333:1985, *Liquid flow measurement in open channels by weirs and flumes — V-shaped broad-crested weirs.*

ISO 8368:1999, *Hydrometric determinations — Flow measurements in open channels using structures — Guidelines for selection of structure.*

ISO 9826:1992, *Measurement of liquid flow in open channels — Parshall and SANIIRI flumes.*

ISO 9827:1994, *Measurement of liquid flow in open channels by weirs and flumes — Streamlined triangular profile weirs.*

### 3 Terms, definitions and symbols

For the purposes of this International Standard, the terms and definitions given in ISO 772 apply. A full list of symbols with the corresponding units of measurement is given below.

Symbol		Units of measurement
$A$	area of cross-section of flow	$m^2$
$b$	crest width	m
$B$	width of approach channel	m
$C_D$	coefficient of discharge	non-dimensional
$C_{dr}$	drowned-flow reduction factor	non-dimensional
$C_V$	coefficient of approach velocity	non-dimensional
$e$	uncertainty in absolute magnitude	non-dimensional
$g$	acceleration due to gravity	$m/s^2$
$h$	gauged head	m
$H$	total head	m
$h_p$	crest-tapping pressure head	m
$h_v$	velocity approach head	m
$L$	length of flume throat or weir crest in direction of flow	m
$n$	number of measurements in a set	non-dimensional
$p$	height of flume invert or weir crest above mean bed level	m
$Q$	total discharge	$m^3/s$
$Q_1, Q_2, Q_3$	individual section discharges (in general $Q_n$ )	$m^3/s$
$Q_{mod}$	total modular discharge	$m^3/s$
$q$	discharge per unit width	$m^3/s$
$s_y$	standard deviation of a set of measurements of quantity $y$	m
$s_{\bar{y}}$	estimated standard deviation of the mean of several readings of quantity $y$	m
$\bar{v}$	mean velocity at cross-section	m/s
$\bar{v}_a$	mean velocity in approach channel	m/s
$X_Q$	percentage uncertainty in total discharge	non-dimensional



$X_{Q,1}, X_{Q,2}, X_{Q,3}$ <sup>1)</sup>	percentage uncertainty in individual section discharges	non-dimensional
$X_{tu}$	percentage uncertainty in estimating upstream water levels or upstream total head levels	non-dimensional
$X_{td}$	percentage uncertainty in estimating downstream water levels or downstream total head levels	non-dimensional
$X_y$	percentage uncertainty in quantity $y$	non-dimensional
$\alpha$	Coriolis energy coefficient	non-dimensional
$\Delta$	difference in weir-crest levels	m
$\delta$	boundary layer displacement thickness	m

### Suffixes

1	denotes upstream value
2	denotes downstream value

### Superscripts

G	refers to gauging section
T	refers to crest-tapping section
S	refers to any other section

## 4 Characteristics of compound gauging structures

A compound gauging structure as covered by this International Standard comprises two or more individual structures, operated in parallel and separated by divide piers.

The individual structures, which can be used in a compound gauging weir, are specified in ISO 1438-1, ISO 3846, ISO 4359, ISO 4360, ISO 4362, ISO 4374, ISO 4377, ISO 8333, ISO 9826 and ISO 9827. The structures described in ISO 4360, ISO 4362, ISO 4377, ISO 8333, ISO 9826 and ISO 9827 may be used in the drowned flow range (see annex B.1).

In the modular flow range, discharges depend solely on upstream water levels, and a single measurement of upstream head is required. In the drowned flow range, discharges depend on both upstream and downstream water levels, and two independent head measurements are required. These are:

- the upstream head; and either
- the head measured in the crest-tapping for a triangular profile weir (two dimensional or flat-V forms);
- the head measured within the throat of a Parshall flume; or
- the head measured in the tailwater for the other structures.

1) In cases where the subscript of a symbol also contains a subscript, it is house style to write the second subscript on the same line, after a comma.

Thus  $X_{Q_1}$  is written  $X_{Q,1}$ .

The flow conditions considered are limited to steady or slowly changing flows. The essentially parallel flow through the compound structure is ensured by the use of divide piers. The flow is separated by the divide piers into each individual weir or flume. The discharge can be determined through each individual section by a single upstream head measurement, at one section only, in the case of modular flow or by two independent head measurements, at one section only, as required for drowned flow conditions. The summation of the discharges through each of the sections provides the measurement of total flow within the channel.

## 5 Installation

### 5.1 Selection of site

A preliminary survey shall be made of the physical and hydraulic features of the proposed site to check that it conforms (or may be made to conform) to the requirements necessary for measurement using the weir.

Particular attention shall be paid to the following features in selecting the site of the weir:

- a) the availability of an adequate length of channel of regular cross-section;
- b) the existing velocity distribution;
- c) the avoidance of channels having gradients greater than 0,4 %;
- d) the effects of any increased upstream water level due to the flow-measuring structure;
- e) the conditions downstream, including such influences as tides, confluence with other streams, sluice-gates, mill dams and other controlling features that might cause drowning;
- f) the impermeability of the ground on which the structure is to be founded, and the necessity for piling, grouting or other sealing in river installations;
- g) the necessity for flood banks to confine the maximum discharge to the channel;
- h) the stability of the banks, and the necessity for trimming and/or revetment in natural channels;
- i) the clearance of rocks or boulders from the bed of the approach channel;
- j) the effects of wind.

NOTE 1 Wind can have a considerable effect on the flow in a river or over a weir, especially if these latter are wide and the head is small and the prevailing wind is in a transverse direction.

If the site does not possess the characteristics required for satisfactory measurements, it shall be rejected unless suitable improvements are practicable.

If a survey of a stream shows that the existing velocity distribution is regular, then it should be assumed that the velocity distribution will remain satisfactory after the weir has been built.

If the existing velocity distribution is irregular and no other site for a gauge is feasible, due consideration shall be given to checking the distribution after the weir has been installed and to improving it, if necessary.

NOTE 2 Several methods are available for obtaining more precise indications of irregular velocity distribution: velocity rods, floats or concentrations of dye can be used in small channels, the latter being useful in checking conditions at the bottom of the channel. A complete and quantitative assessment of velocity distribution may be made by means of a current meter.

NOTE 3 After installation, the velocity profiles will always be improved by the increased depth of water approaching the compound weir.

## 5.2 Installation conditions

### 5.2.1 General

The complete measuring installation consists of an approach channel, a flow-measuring structure and a downstream channel. The parameters of each of these three components affect the overall accuracy of the measurements.

Installation requirements include such features as weir finish, the cross-sectional shape of the channel, channel roughness and the influence of control devices upstream or downstream of the gauging structure.

The distribution and direction of velocity have an important influence on the performance of a weir, these factors being determined by the features mentioned in this subclause.

### 5.2.2 Approach channel

For all installations, the flow in the approach channel shall be smooth, free from disturbance and shall have a velocity distribution as normal as possible over the cross-sectional area (see annex A); this can usually be verified by inspection or measurement. In the case of natural streams or rivers, this flow can only be attained by having a long, straight approach channel free from projections into the flow. Unless otherwise specified in the appropriate clauses of this International Standard, the approach channel shall comply with the general requirements outlined in this subclause.

The altered flow conditions due to the construction of the weir may have the effect of building up shoals of debris upstream of the structure, which in time may affect the flow conditions. The likely consequential changes in the water level should be taken into account in the design of gauging stations.

In an artificial channel, the cross-section shall be uniform and the channel shall be straight for a length equal to at least five times its width, and more if attainable.

In a natural stream or river, the cross-section shall be reasonably uniform and the channel shall be straight for such a length as to ensure regular velocity distribution.

If the entry to the approach channel is through a bend or if the flow is discharged into the channel through a conduit of smaller cross-section or at an angle, then a longer length of straight approach channel is required to achieve a regular velocity distribution.

Baffles shall not be installed closer to the points of measurement than five times the maximum head to be measured.

Under certain conditions, a standing wave may occur upstream of the gauging device, for example if the approach channel is steep. Provided this wave is at a distance of no less than 30 times the maximum head upstream, flow measurement is feasible, subject to confirmation that a regular velocity distribution exists at the gauging station.

If a standing wave occurs within this distance, the approach conditions and/or gauging device shall be modified.

Means of ensuring that the baffles are at all times free of debris both on and below the water surface should be provided.

### 5.2.3 Flow-measuring structure

The structure shall be rigid, watertight and capable of withstanding flow conditions without distortion or fracture. It shall be at right angles to the direction of flow and shall have the dimensions specified in the relevant International Standard(s) for the type of flow-measuring structure(s) chosen.

For the purposes of this International Standard, a compound flow-measuring structure consists of a series of individual weirs or flumes, which are disposed across the width of an open channel. The individual sections of the

compound structure shall be separated by divide piers such that each section can be treated as a simple weir or flume, thus minimizing three-dimensional flow conditions. The computation of discharge for individual sections can therefore be based on established discharge equations (see the references in annex B).

The divide piers that separate individual sections of the compound structure shall be at least 0,3 m thick to avoid sharp curvatures at their upstream noses (cutwaters), which can be semi-circular or semi-elliptical.

To minimize cross flows at the cutwaters of the divide piers and subsequent flow separation, the difference in levels between adjacent crests (weirs) or inverts (flumes) shall not exceed 0,5 m.

NOTE 1 Flow conditions at and near the cutwaters of the divide piers will be improved if the upstream bed levels bear a similar relationship to crest or invert levels at each individual section of the compound structure (see Figure B.1). This minimizes the variations in velocity across the width of the approach channel.

The compound flow-measuring structure shall be capable of withstanding flood flow conditions without damage from outflanking or from downstream erosion. The structure and the immediate approach channel can be constructed of concrete with a smooth cement finish or surfaced with a smooth non-corrodible material.

NOTE 2 In laboratory installations, the finish should be equivalent to rolled sheet metal or planed, sanded and painted timber.

The surface finish is particularly important near the crest or throat invert, but can be relaxed a distance along the profile of  $0,5 H_{\max}$  upstream and downstream of the crest or throat. Details of tolerances for the finish and alignment of individual weirs or flumes are given in the appropriate International Standard.

A typical design for a compound flow-measuring structure is shown in Figure B.1.

NOTE 3 The lengths of the divide piers are not crucial but they should extend preferably from the upstream recording section to the downstream limit of individual weirs or flumes.

The height of the divide piers should normally be the same as that of the vertical side walls. If less, then errors will arise in the computation of discharge when water levels exceed the height of the divide piers. These errors will depend on the dimensions of the compound structure and the actual height of the divide piers.

#### 5.2.4 Downstream conditions

Conditions downstream of the structure are important in that they control the tailwater level. This level is one of the factors that determine whether modular or drowned flow conditions will occur at the weir. It is essential, therefore, to calculate or observe stage-discharge relations covering the full discharge range, and to make decisions regarding the type of weir and its required geometry in the light of this evidence.

When making these calculations or observations particular care shall be taken to ensure that influences that may be periodic or seasonal such as tides shall be taken into account.

NOTE Confluences with other streams, sluice-gates, mill dams and other features such as weed growth may also influence tailwater levels.

If the downstream channel is erodible, the extent of protective works necessary to dissipate the additional energy generated by the raised water level upstream of the structure shall be taken into account in the assessment of the site.

## 6 Maintenance

Maintenance of the flow-measuring structure and the approach channel is important to ensure accurate continuous measurements.

It is essential that the approach channel to weirs be kept clean and free from silt and vegetation as far as practicable, and for at least the distance specified in 5.2.2. The stilling well and the entry from the approach channel shall also be kept clean and free from deposits.

The weir structure shall be kept clean and free from clinging debris and care shall be taken in the process of cleaning to avoid damage to the crest.

NOTE The presence of divide piers between weir sections will inevitably increase maintenance requirements for the structure, particularly if floating debris is prevalent.

## 7 Measurement of head

### 7.1 General

The head upstream of the flow-measuring structure may be measured by a hook-gauge, point-gauge or staff-gauge where spot measurements are required, or by a recording-gauge where a continuous record is required; in many cases it is necessary to measure head in a separate stilling well, in particular to measure the crest-tapping head. Stilling wells also eliminate surface turbulence which is necessary for tailwater head measurement.

The discharges given by the working equation in the appropriate standard for the particular structure are volumetric figures, and the liquid density does not affect the volumetric discharge for a given head provided that the operative head is gauged in liquid of identical density. If the gauging is carried out in a separate well, a correction for the difference in density may be necessary if the temperature in the well is significantly different from that of the flowing liquid. However, it is assumed in this International Standard that the densities are equal.

### 7.2 Stilling well

It is usual to measure the upstream head in a stilling well to reduce the effects of water surface irregularities.

NOTE 1 When this is done, it is also desirable to measure the head in the approach channel periodically.

Where the structure is designed to operate in the drowned flow range a gauge well is required to measure the downstream head as follows:

- for triangular profile weirs the piezometric head developed within the separation pocket immediately downstream of the crest;
- for the other weirs the downstream water level in the downstream channel section according to the appropriate standard.

The gauge well shall be vertical and of sufficient height and depth to cover the full range of water levels and shall have a minimum height of 0,6 m above the maximum water level expected. The gauge well shall be connected to the appropriate head measurement position by means of a pipe or a slot.

Both the well and the connecting pipe shall be watertight and, where the well is provided for the accommodation of the float of a level recorder, it shall be of adequate size and depth to give clearance around and beneath the float at all stages. The float shall be no nearer than 0,075 m to the wall of the well.

The pipe shall have its invert no less than 0,06 m below the lowest level to be gauged.

The pipe connection to the upstream head measurement position shall terminate flush with the boundary of the approach channel and preferably at right angles thereto. The approach channel boundary shall be plain and smooth (equivalent to carefully finished concrete) within a distance of 10 times the diameter of the pipe from the centreline of the connection. A pipe that is oblique to the wall is acceptable only if it is fitted with a removable cap or plate, and set flush with the wall, through which a number of holes are drilled. The edges of these holes shall not be rounded or burred.

Where the individual section of the compound structure is a two-dimensional triangular profile weir the pipe connection to the head measurement position for the separation pocket head shall be as given in ISO 4360.

Where the individual section of the compound structure is a flat-V weir, the pipe connection to the head measurement position for the separation pocket head shall be as given in ISO 4377.

Adequate additional depth shall be provided in the well to avoid the danger of floats grounding either on the bottom or on any accumulation of silt or debris.

The diameter of the connecting pipe or width of slot shall be sufficient to permit the water level in the well to follow the rise and fall of head without appreciable delay, but shall be as small as possible, consistent with ease of maintenance, to damp out oscillations due to short period waves.

NOTE 2 No firm rule can be laid down for determining the size of the connecting pipe, because this is dependent on the circumstances of the particular installation, for example whether the site is exposed and thus subject to waves and whether a large diameter well is required to house the floats of recorders.

It is preferable to make the connection too large rather than too small, because a restriction can easily be added later if short period waves are not adequately damped out. A 100 mm diameter pipe is usually suitable for a flow measurement in the field, as compared with the 3 mm diameter pipe that is appropriate for precision head measurement with steady flows in the laboratory.

### 7.3 Zero setting

Accurate initial setting of the zeros of the head measuring devices with reference to the level of the crest, or invert, and regular checking of these settings thereafter, is essential if overall accuracy is to be attained.

A means of checking the zero setting of the head-measuring devices shall be provided, consisting of a datum related to the level of the weir.

A zero check based on the level of the water when the flow ceases is liable to serious errors from surface tension effects and shall not be used.

NOTE As the size of the weir and the head on it reduces, small errors in construction and in the zero setting and reading of the head-measuring device become of greater importance.

### 7.4 Location of head measurement section(s)

The upstream head shall be measured at any one of the individual sections of the compound structure but preferably at the section with the lowest crest or invert. The tapping shall be in the vertical side wall if the individual section is adjacent to the bank, or in the divide pier if the individual section is mid-stream. In this latter case the divide piers shall extend at least  $H_{\max}$  upstream of the head measurement position.

The distance of the measurement section from crest or invert is usually expressed as a multiple of the maximum total head with a value appropriate to the individual section of three to four. For precise locations for each type of structure, see the appropriate International Standard.

The presence of divide piers is not considered to have a significant influence, and the position of the head measurement section need only satisfy the requirements noted in this subclause.

If a triangular profile or flat-V weir is used as one of the individual sections of the compound structure, and it is designed to operate in the non-modular (drowned) flow range, then a separate crest tapping and associated gauge well shall be provided (see ISO 4360 and ISO 4377).

## 8 Computation of discharge

### 8.1 Modular flow conditions

Modular flow calibrations are based on measurements of upstream water levels. Where a single (non-compound) structure is used, the recorded water level is used directly in the computation of discharge. However, it is not usually economical to measure water levels upstream of each individual section of a compound weir, and hence it

is necessary to make assumptions about the relationships between flow conditions at the various sections when calculating the total flow.

Research has shown that the total head level can be assumed constant over the full width of a compound flow-measuring structure and that it can be obtained by adding to the observed water level the velocity head appropriate to the individual section at which the water level is observed. Thus the basis of the method of computing the total discharge over a compound structure is to calculate the total head level at the individual section at which the water level is measured, as if it were a simple non-compound structure, and to use the same value of total head level to calculate individual discharges at other sections. Successive approximation or coefficient of velocity techniques are applied at the section of the structure where the water level is recorded to convert gauged to total heads. Discharge equations in terms of total heads are used at other sections of the compound structure and no conversions are required. An example calculation is given in annex C.

## 8.2 Non-modular (drowned) flow conditions

When a compound structure is designed to operate in the non-modular flow range, a triangular profile or flat-V weir with a crest tapping shall be used in those sections of the compound weir that are likely to drown. For trapezoidal profile weirs, Parshall flumes, streamlined triangular weirs and V-shaped broad-crested weirs, only one gauge well is required in the downstream channel.

Upstream total heads are determined as for the modular flow case but discharges at those individual sections of the compound structure that are drowned are obtained by considering both the upstream total head and the crest-tapping pressure or downstream water level. An example calculation is given in annex C.

## 9 Errors in flow measurement

### 9.1 General

The total uncertainty of any flow measurement can be estimated if the uncertainties from various sources are combined. The assessment of these contributions to the total uncertainty will indicate whether the rate of flow can be measured with sufficient accuracy for the intended purpose. This clause is intended to provide sufficient information for the user of this International Standard to estimate the uncertainties of measurements of discharges.

The error is the difference between the true rate of flow and that calculated in accordance with the equations in the appropriate standard for the particular structure used for calibrating the flow-measuring structure (which is assumed to be constructed and installed in accordance with this International Standard). The term 'uncertainty' is used here to denote the deviation from the true rate of flow within which the measured flow is expected to lie some 19 times out of 20 (with 95 % confidence limits).

### 9.2 Sources of error

The sources of error in the discharge measurement for each individual section of the compound structure are as given in the errors sections of the International Standards relating to the appropriate type of structure (see B.1). Additional errors arise due to the method used for estimating water levels or total head levels at individual sections, when (as is usual) these are not measured separately at each section. Available evidence is limited, but it suggests that the percentage uncertainty in discharge,  $X_{tu}$ , associated with transposing upstream water levels or total head levels is random, with a magnitude within the range of  $\pm 5\%$ . In particular cases, more reliable estimates can be made of this value by making field or laboratory observations. For cases involving drowned flow, little information is available about the possible value of  $X_{td}$  the additional uncertainty in discharge associated with transposing downstream water levels or total head levels, which is likely to be of the order of  $\pm 10\%$ .

### 9.3 Kinds of error

**9.3.1** Errors can be classified as random or systematic, the former affecting the reproducibility (precision) of measurement and the latter affecting its true accuracy.

**9.3.2** The standard deviation of a set of  $n$  measurements of a quantity,  $y$ , under steady conditions can be estimated from the equation:

$$s_y = \left( \frac{\sum_{i=1}^n (y_i - \bar{y})^2}{n-1} \right)^{1/2} \quad (1)$$

where  $\bar{y}$  is the arithmetic mean of the  $n$  measurements.

The standard deviation of the mean is then given by the equation:

$$s_{\bar{y}} = \frac{s_y}{\sqrt{n}} \quad (2)$$

and the uncertainty of the mean is  $2s_{\bar{y}}$  (for 95 % probability)<sup>2)</sup>. This uncertainty is the contribution of the observation of  $y$  to the total uncertainty.

**9.3.3** A measurement can also be subject to systematic error; the mean of very many measured values would thus still differ from the true value of the quantity being measured. An error in setting the zero of a water level gauge to invert level, for example, produces a systematic difference between the true mean measured head and the actual value. As repetition of the measurement does not eliminate systematic errors, the actual value can only be determined by an independent measurement known to be more accurate.

## 9.4 Errors in coefficient values and errors in measurement

These errors are dealt with in the error clauses of the appropriate International Standards relating to the individual sections of the compound flow-measuring structure (see B.1).

## 9.5 Combinations of uncertainties to give overall uncertainty in total discharge

**9.5.1** For the section at which the upstream water level is measured, the percentage uncertainty  $X_{Q,1}$ <sup>3)</sup> in the section flow  $Q_1$  is calculated by reference to the International Standard appropriate to that type of weir or flume (see B.1).

**9.5.2** The percentage uncertainties,  $X_{Q,2}, X_{Q,3}, \dots$ , in the section flows,  $Q_2, Q_3, \dots$ , for other sections are similarly computed, assuming the same uncertainty on water level measurement (not percentage) as in 9.5.1. Uncertainties due to transferring water levels or heads are ignored at this stage of the calculation.

**9.5.3** The uncertainty in the total flow,  $Q$ , is the weighted mean of the uncertainties for the flows,  $Q_i$ , in the individual sections, with the inclusion of terms for the uncertainty of transposing water levels or heads, estimated from the equation:

$$X_Q = \pm \frac{1}{Q} \left[ \sum_{i=1}^n Q_i \sqrt{(X_{Q_i}^2 + X_{tu}^2 + X_{td}^2)} \right] \quad (3)$$

**9.5.4** If the weir is submerged, then  $X_{td}$  is omitted for any sections at which the crest pressure is measured, but included for any other sections. For cases of submergence it does not follow automatically that  $X_{tu}$  is to be omitted at sections where the upstream water level are measured. A transfer of upstream heads as well as downstream heads may be involved in assessing crest pressures at such sections.

2) This factor of 2 assumes that  $n$  is large. For  $n = 6$  the factor is 2,6, for  $n = 8$  it is 2,4, for  $n = 10$  it is 2,3, for  $n = 15$  it is 2,1.

3) All uncertainties have a plus or minus value.



## 9.6 Presentation of results

Although it is desirable, and frequently necessary, to list total random and total systematic uncertainties separately, a simpler presentation of results may be required.

For this purpose, random and systematic uncertainties may be combined as described in ISO/TR 5168.

## Annex A (normative)

### Velocity distribution

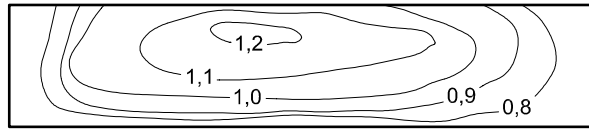
An even distribution of velocity over the cross-section of the approach channel in the region of the gauging station is necessary for high accuracy of measurement of discharge by means of weirs, notches and flumes. This is because the recommended coefficients are empirical values obtained by various investigations and were usually obtained under ideal laboratory conditions. These involved either the use of screens to ensure an approximately uniform velocity over the cross-section, or a long straight approach channel conducive to the establishment of a normal distribution of velocities.

Normal velocity distribution is defined as the distribution of velocities attained in a channel over a long uniform straight reach. A characteristic feature of flow in such a channel is that the velocity is at maximum close to the water surface, with the average velocity occurring at about 0,4 of the depth above invert.

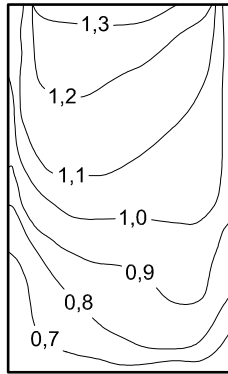
Any deviation from the ideal conditions of either very uniform velocity or a normal velocity distribution may lead to errors in flow measurement, but quantitative information on the influence of velocity distribution is inadequate to define the acceptable limits of departure from the ideal distributions. With the uncertainties on discharge coefficients quoted in the relevant International Standards (see B.1) in mind, Figure A.1 provides some guidance on the type of velocity distribution and evenness thereof that are acceptable in practice.

In Figure A.1 different patterns of isovels are shown. These isovels are contours of equal velocity in the direction of flow.

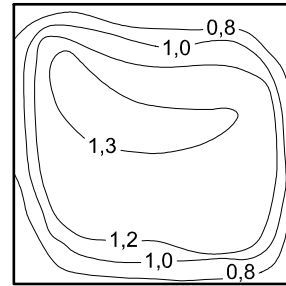
The percentage difference in the value of  $\alpha$  left and  $\alpha$  right is shown in Figure A.1. Figure A.1 c) shows the extreme value for the departure from ideal approach conditions for the uncertainties quoted in the relevant International Standards (see B.1) and this percentage difference may be regarded as the maximum permissible. This distribution gives a Coriolis energy coefficient of 1,44.



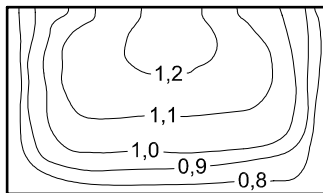
a)



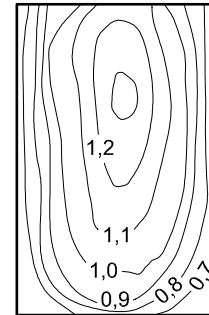
b)



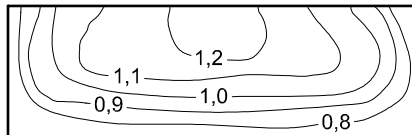
c)



d)



e)



f)

a)  $\left(\frac{\alpha \text{ left}}{\alpha \text{ right}} - 1\right) \times 100 = 6,9 \%$

d)  $\left(\frac{\alpha \text{ left}}{\alpha \text{ right}} - 1\right) \times 100 = 1,2 \%$

b)  $\left(\frac{\alpha \text{ left}}{\alpha \text{ right}} - 1\right) \times 100 = 9,0 \%$

e)  $\left(\frac{\alpha \text{ left}}{\alpha \text{ right}} - 1\right) \times 100 = 0,6 \%$

c)  $\left(\frac{\alpha \text{ left}}{\alpha \text{ right}} - 1\right) \times 100 = 12,3 \%$

f)  $\left(\frac{\alpha \text{ left}}{\alpha \text{ right}} - 1\right) \times 100 = 0,9 \%$

Figure A.1 — Examples of velocity profiles in the approach channel

## Annex B (normative)

### Non-modular (drowned) flow

#### B.1 General

Structures that are standardized for operation in the modular range are as follows:

- thin-plate weirs: ISO 1438-1;
- triangular profile weirs: ISO 4360;
- trapezoidal broad-crested weirs: ISO 4362;
- flumes: ISO 4359;
- rectangular broad-crested weirs: ISO 3846;
- round-nose horizontal crest weirs: ISO 4374;
- flat-V weirs: ISO 4377;
- V-shaped broad-crested weirs: ISO 8333;
- Parshall and SANIIRI flumes: ISO 9826;
- streamlined triangular profile weirs: ISO 9827.

Structures which are additionally standardized for operation in the non-modular range for use in mild drowned flow conditions are

- Parshall flumes, and
- streamlined triangular profile weirs.

Structures which are additionally standardized for operation in the non-modular range for use with significant drowned conditions are:

- SANIIRI flumes;
- flat-V weirs;
- triangular profile weirs;
- V-shaped broad-crested weirs.

These weirs may be used in the non-modular flow range if a crest tapping is provided. They are commonly used as one or more of the sections of a compound structure, the method of operation being described in B.2.

B.2 gives the procedure to calculate discharges under drowned flow characteristics for the use of the triangular profile weir. In a similar way drowned flow through other standard weirs can be calculated using the appropriate standard.

NOTE Uncertainty calculations under drowned conditions.

- a) Parshall and SANIIRI flumes do specify their accuracy of measurement under drowned flow conditions.
- b) The streamlined triangular profile weir incurs an additional uncertainty of 2,5 % when operating under drowned conditions: an increase from 2,5 % to 5 %.
- c) The uncertainty of flow measurement of flat-V and triangular profile weirs increases in inverse proportion to the drowned flow reduction factor across the full drowned flow operating range.

## B.2 Non-modular flow compound 2-dimensional triangular profile weirs with 1:2 and 1:5 slopes

### B.2.1 Method of operation

If a weir complying with ISO 4360 is to be used for gauging in the non-modular range, a crest tapping should be provided together with a separate gauge well in addition to the other requirements for gauging within the modular range. Double gauging with this type of structure will give reliable flow recording in the non-modular range. The modular discharge coefficient is approximately constant throughout its range. In the non-modular range the reduction factor  $C_{dr} = Q/Q_{mod}$  is uniquely related to the ratio  $h_p/H_1$  where  $h_p$  is the crest-tapping pressure head and  $H_1$  is the upstream total head.

Essentially, the crest tapping removes the difficulty of obtaining accurate reading of the downstream water level where some degree of turbulence is invariably present.

Allowing a 1 % uncertainty in the modular discharge value, drowning is considered to take place where  $h_p/H_1$  exceeds 0,24.

For the purpose of checking, at the design stage, whether this type of weir is likely to drown, the submergence ratio at the modular limit is approximately 0,75. It is rare that a design would require the upper structures to drown.

It is recommended that if a triangular profile weir is to be used, then a crest tapping should be installed to provide for possible drowned conditions.

It is recommended that, in cases of doubt as to whether or not a weir may become non-modular, a crest tapping should be provided together with a separate gauge well.

A typical design for a compound structure of this type and crest tapping details are given in Figures B.1 and B.2 respectively.

### B.2.2 Computation of non-modular flows

#### B.2.2.1 General

Two methods for the computation of non-modular discharge for a triangular profile weir complying with ISO 4360 are described in this subclause. They are:

- a) the successive approximation method;
- b) the coefficient of velocity method.

Examples of these methods, as applied to a compound weir, are given in annex C. For non-modular flow the standard discharge equation is modified to

$$Q = C_D \cdot \sqrt{g} \cdot b \cdot C_{dr} \cdot H_1^{3/2}$$

where  $C_{dr}$  is the drowned flow reduction factor. The other symbols are defined in clause 3.

### B.2.2.2 Successive approximation method

The basis of the successive approximation method is to calculate the total head at the section of the weir at which the head is measured (gauging section) as if it were for a single weir, and to use the same value to calculate the individual discharge of each other section of the weir. On the assumption that a crest tapping is fitted to the lowest crest only, it is then necessary to determine if and to what degree the other crest(s) is/are drowned by reference to the ratio of downstream to upstream total head ( $H_2/H_1$ ) calculated from the single reading of the crest tapping.

Superscripts G, T and S and suffixes 1 and 2 are defined in clause 3.

A double superscript applied to the difference in height of two crests ( $\Delta$ ) indicates the two crests involved.

Weir sections that have the same crest level and weir height  $p$  are treated as one crest even if physically separated.

The drowned flow reduction factor  $C_{dr}$  can be obtained from Figure B.3 or from the following equations:

$$C_{dr} = 1,04 \left[ 0,945 - (h_p/H_1)^{1,5} \right]^{0,256} \text{ in the range : } 0,24 < h_p/H_1 < 0,95 \quad (4)$$

in terms of crest-tapping pressure heads; or

$$C_{dr} = 1,035 \left[ 0,817 - (H_2/H_1)^4 \right]^{0,0647} \text{ in the range : } 0,75 < H_2/H_1 < 0,93 \text{ and} \quad (5)^4$$

$$C_{dr} = 8,686 - 8,403 (H_2/H_1) \text{ in the range : } 0,93 < H_2/H_1 < 0,985 \quad (6)^4$$

in terms of downstream total heads.

Equations (5) and (6) should be used only where no crest tapping exists, as the factor  $C_{dr}$  is a function of the ratio of downstream to upstream total head ( $H_2/H_1$ ) and is extremely sensitive to small errors in either head measurements. This method is not recommended for regular gauging of non-modular flows. However, in the case of a compound weir operating in the non-modular range it is necessary to use this method for sections not equipped with a crest tapping.

If the gauging point and crest tapping are at the same section  $\Delta T^G = 0$  and  $C_{dr}^G = C_{dr}^T$  steps 2 f) and 2 h) and step 4 are therefore omitted from the following calculation procedures.

#### Step 1

If  $h^G$  is zero or negative (i.e. there is no flow over the gauging section of the weir) then:

$$Q^G = 0, H_1 = h_1^G, \text{ calculate steps 2 d) to 2 g) and continue from step 4.}$$

Otherwise calculate the cross-sectional area at the upstream gauging section.

$$A^G = (h_1^G + p^G) \times b^G$$

For the first calculation only of step 2 a), assume  $Q^G = 0$ .

4) Ackers, White, Perkins and Harrison, *Weirs and flumes for flow measurement*. Whitney. ISBN 0 471 99637 8.

**Step 2**

- a)  $\bar{v}_1^G = Q^G / A^G$
- b)  $h_{v,1}^G = (\bar{v}_1^G)^2 / 2g$
- c)  $H_1^G = h_1^G + h_{v,1}^G$
- d)  $H_1^T = H_1^G + \Delta^{TG 5)}$
- e) Calculate  $h_p / H_1^T$ , determine  $C_{dr}^T$  and also  $H_2^T / H_1^T$  from Figure B.3 or equation (4), (5) or (6).
- f)  $H_2^T = (H_2^T / H_1^T) H_1^T$
- This is a basic assumption of the method.
- g)  $H_2^G = H_2^T - \Delta^{TG 5)}$
- h) Calculate  $(H_2^G / H_1^G)$  and determine  $C_{dr}^G$  from Figure B.3 or equation (5) or (6).
- i)  $Q^G = 0,633 \sqrt{g} \cdot b^G \cdot C_{dr}^G \cdot (H_1^G)^{3/2}$

**Step 3**

Repeat steps 2 a) to 2 i) using the new value of  $Q^G$  obtained in 2 i) until two successive values of  $Q^G$  in step 2 i) differ by less than a predetermined limit of accuracy. Note the final values of  $Q^G$ ,  $H_1^G$ ,  $H_1^T$  and  $C_{dr}^T$ .

**Step 4**

For the crest-tapping section of the weir

$$Q^T = 0,633 \sqrt{g} \cdot b^T \cdot C_{dr}^T (H_1^T)^{3/2}$$

**Step 5**

For any other section of the weir calculate:

- a)  $H_1^S = H_1^G + \Delta^{SG 6)}$
- b)  $H_2^S = H_2^G + \Delta^{SG 6)}$
- c) Calculate  $H_2^S / H_1^S$  and determine  $C_{dr}^S$  from Figure B.3 or equation (5) or (6).
- d)  $Q^S = 0,633 \sqrt{g} \cdot b^S \cdot C_{dr}^S \cdot (H_1^S)^{3/2}$

---

5) If the crest-tapping section, T, is higher than the gauging section, G, replace  $\Delta^{TG}$  with  $-\Delta^{TG}$

6) If the section under consideration, S, is higher than the gauging section, G, replace  $\Delta^{SG}$  with  $-\Delta^{SG}$

**Step 6**

$$\text{Total } Q = Q^G + Q^T + \sum Q^S.$$

**B.2.2.3 Coefficient of velocity method**

The basis of this method is identical with that given for the successive approximation method and the same notation is used.

**Step 1**

To determine  $Q^T$ :

- a) calculate  $h_1^T = h_1^G + \Delta^{TG}$  7);
- b) calculate  $h_p/h_1^T$  and  $h_1^T/(h_1^T + p^T)$ ;
- c) determine  $C_{dr}^T$  from Figure B.4;
- d) calculate  $C_{dr}^T \left[ h_1^T / (h_1^T + p^T) \right]$  from b) and c) above;
- e) determine  $C_v^T$  from Table C.1;
- f)  $Q^T = 0,633 C_v^T \sqrt{g} \cdot b^T \cdot C_{dr}^T \cdot (h_1^T)^{3/2}$ ;
- g)  $H_1^T = (C_v^T)^{2/3} h_1^T$ .

**Step 2**

Determine  $Q^S$  for any other sections including the gauging section (if it is not also the crest-tapping section) as follows:

- a) calculate  $H_2^T/H_1^T$  from  $C_{dr}^T$  in Figure B.3;
- b) calculate  $H_2^T = (H_2^T/H_1^T) H_1^T$ ;
- c) calculate  $H_1^S = H_1^T - \Delta^{ST}$  8);
- d) calculate  $H_2^S = H_2^T - \Delta^{ST}$  8);
- e) calculate  $H_2^S/H_1^S$ ;
- f) determine  $C_{dr}^S$  from Figure B.3;

7) If the crest-tapping section is higher than the gauging section,  $\Delta^{TG}$  is replaced by  $-\Delta^{TG}$ . If they are the same section,  $\Delta^{TG} = 0$ .

8) If the section under consideration, S, is lower than the crest-tapping section, T, then  $\Delta^{ST}$  is replaced by  $-\Delta^{ST}$ .



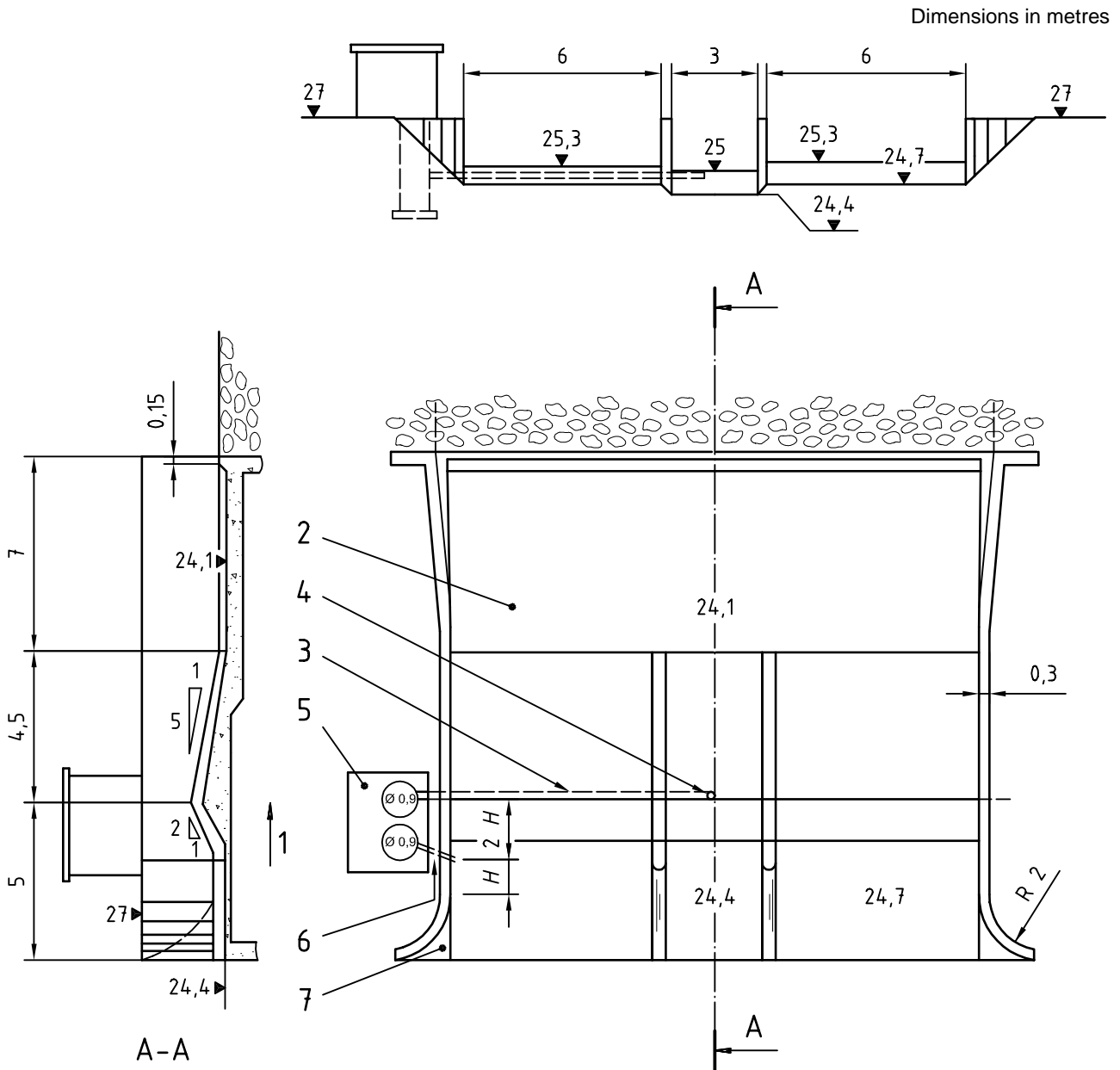
$$g) \quad Q^S = 0,633\sqrt{g}b^S C_{dr} (H_1^S)^{3/2};$$

**Step 3**

$$\text{Total } Q = Q^T + \sum Q^S.$$

**B.2.2.4 Accuracy of computational methods**

Successive approximation and coefficient of velocity methods of calculation are equally effective for determining modular and non-modular flows at compound structures with one exception. That exception is the non-modular operation of a compound structure at which upstream water level and crest-tapping pressure are measured at different sections of the structure. In these circumstances the inaccurate assumption that water surface level is equal at all sections of the structure has to be made in the coefficient of velocity method. Example C.2 gives a difference of 100 (41,39 – 39,58)/39,58 = 4,6 %. In this situation, therefore the method of successive approximation should always be used.

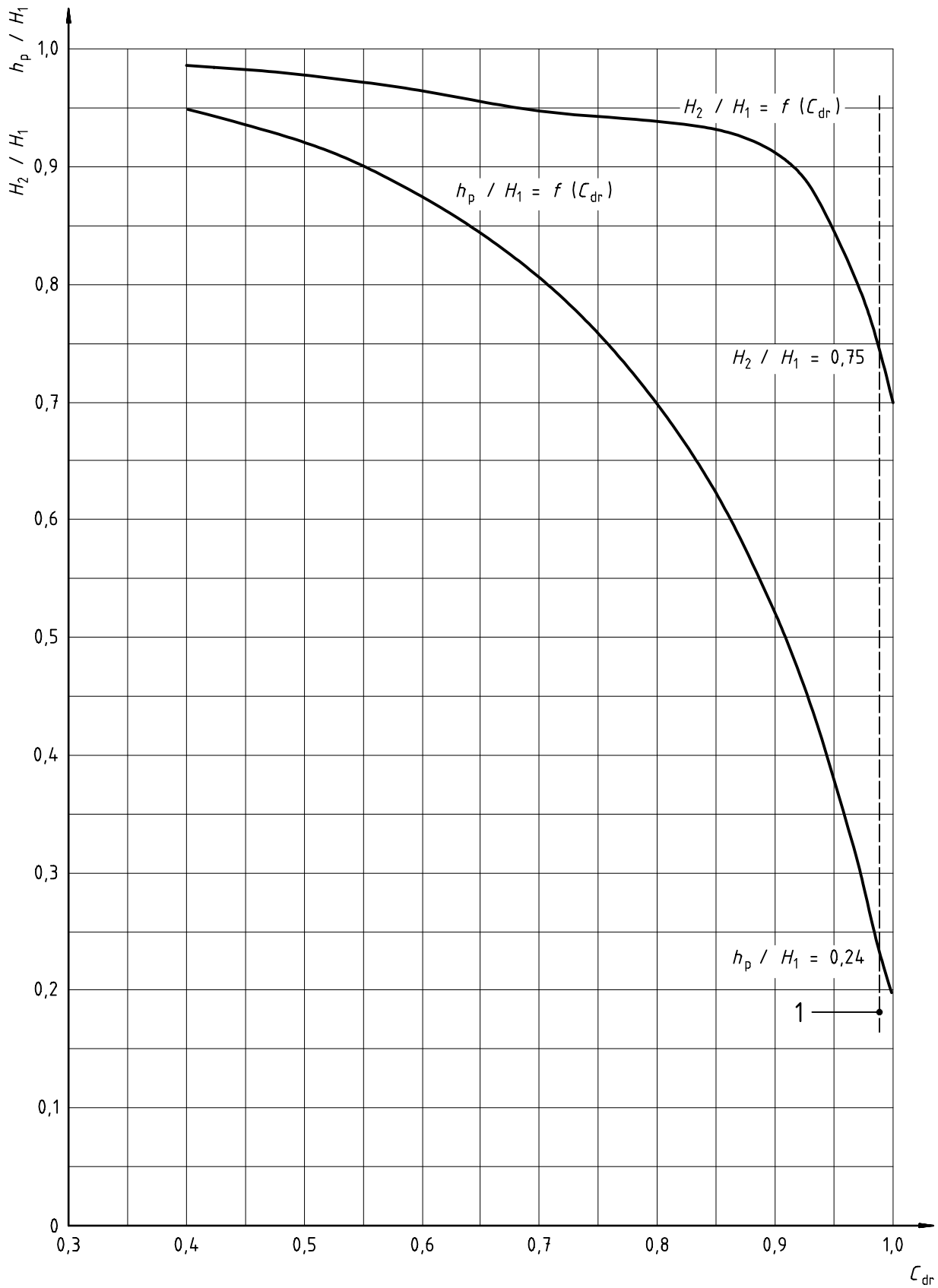


**Key**

- |   |  |   |                           |
|---|--|---|---------------------------|
| 1 | Flow   | 5 | Recorder housing          |
| 2 | Stilling basin   | 6 | Intake: $\varnothing 0,1$ |
| 3 | Crest-tapping pipe: $\varnothing 0,1$  | 7 | Transition formed         |
| 4 | Crest to crest-tapping box ( $0,3 \times 0,6 \times 0,15$ ):<br>$\varnothing 0,01$ |   |                           |

**Figure B.1 — Examples of compound weir design**





Key  
 1 1 % tolerance line

Figure B.3 — Drowned-flow characteristics expressed in terms of  $h_p/H_1$  and  $H_2/H_1$  as a function of  $C_{dr}$  for triangular profile weirs

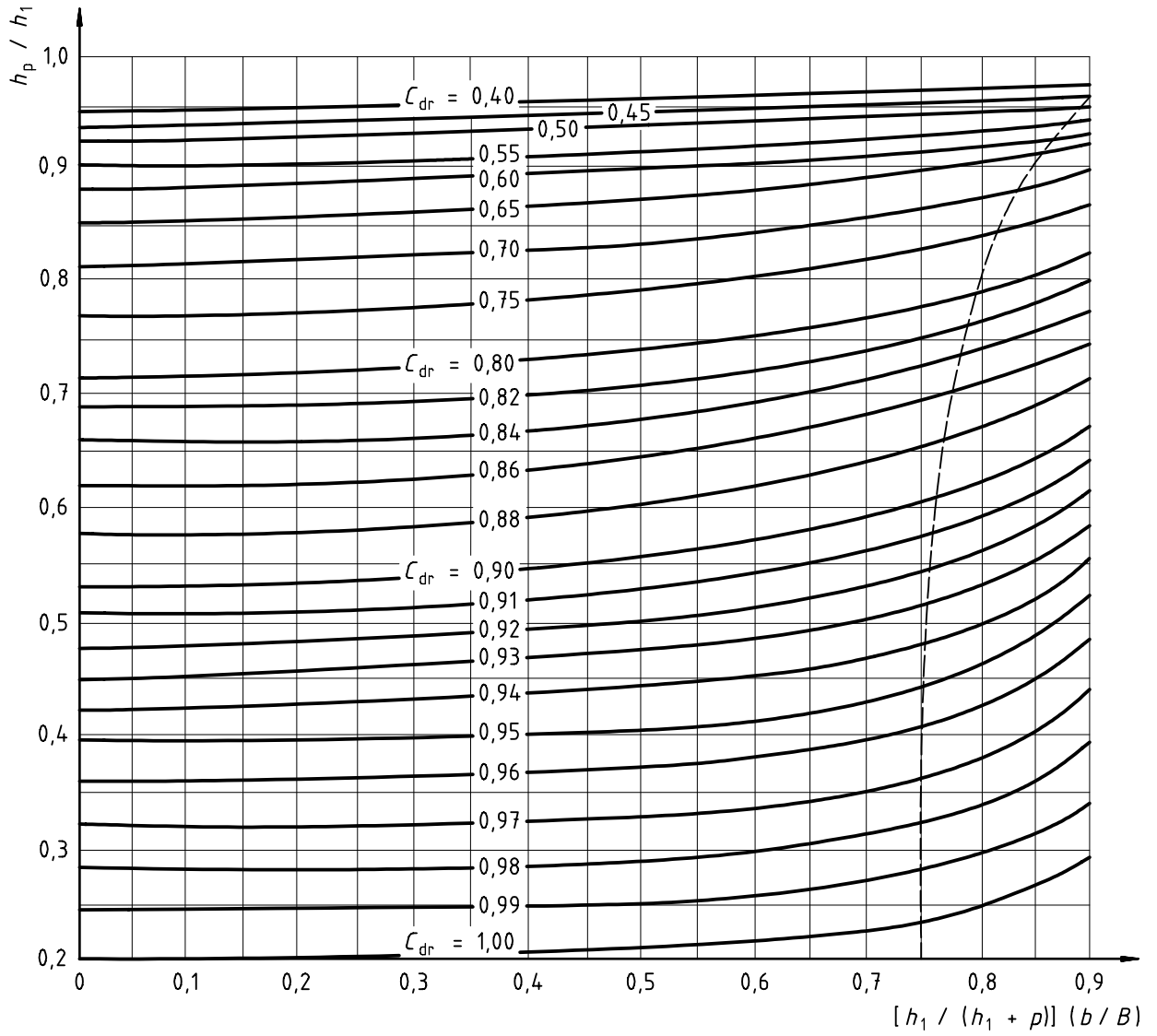


Figure B.4 — Drowned-flow reduction factor  $C_{dr}$  in terms of  $h_p/h_1$  and  $\left( \frac{h_1}{h_1 + p} \right) \frac{b}{B}$  for triangular profile weirs

## Annex C (normative)

### Methods of calculations

#### C.1 Modular flow

##### C.1.1 General

Calculate the discharge for a three-part compound structure comprising a rectangular-throated control flume with a level invert flanked by round-nosed broad-crested weirs of equal crest elevation and differing widths. Flow within the individual sections is to be within the modular range. (See also ISO 4359 and ISO 4374.)

Relevant conditions are as follows:

Flank weirs:

width	a) 6,4 m
	b) 3,7 m
crest heights	1,15 m above datum
crest lengths in direction of flow	1,8 m

Central flume:

width at entrance	2,5 m
width at throat	1,5 m
invert level	0,0 m above datum
throat length	2,0 m

Water level measured at flank weir 2,90 m above datum.

Surface finish smooth, i.e.  $\delta/L = 0,003$ .

It is assumed in this example that the water level is measured by a recorder having a resolution,  $e_r$ , of 1 mm with an uncertainty,  $e_h$ , of  $\pm 3$  mm. The zero is measured in each case,  $e_z$  to  $\pm 1$  mm. A series of readings of a constant head produced a standard deviation of the mean of 1,5 mm. The uncertainty in width measurement may be taken as  $\pm 2$  mm.

##### C.1.2 Discharge flank weirs

$$Q = (2/3)^{3/2} C_D \cdot C_v \cdot b \sqrt{g} \cdot h^{3/2}$$

[from 8.1.2 of ISO 4374: 1990, equation (2)]

where

$$C_D = (1 - 0,006L/b)(1 - 0,003L/h)^{3/2}$$

[from 8.2.3 of ISO 4374:1990, equation (6) a),  $\delta/L$  taken as 0,003]

therefore  $C_D = 0,994$ .

Hence

$$C_D \cdot b \cdot h/A = 0,60$$

therefore  $C_V = 1,10$

(from Figure 3 of ISO 4374: 1990)

$$Q = 43,59 \text{ m}^3/\text{s}.$$

### C.1.3 Transfer of total head levels

Flank weir gauged head,  $h = 1,75$  m.

Flank weir coefficient of velocity,  $C_V = 1,10$ .

Therefore flank weir total head,  $H = hC_V^{2/3} = 1,86$  m.

Therefore total head level =  $(1,86 + 1,15) = 3,01$  m above datum.

Therefore flume total head,  $H = hC_V^{2/3} = 3,01$  m.

### C.1.4 Discharge of central flume

$$Q = (2/3)^{3/2} C_D \cdot b \sqrt{g} \cdot C_V \cdot h^{3/2}$$

[from 10.4.1 of ISO 4359, equation (20)]

where

$$C_D = (1 - 0,006L/b) (1 - 0,003L/h)^{3/2}$$

[from 10.4.1 of ISO 4359, equation (25),  $\delta/L$  taken as 0,003].

For the purposes of calculating  $C_D$  an approximate gauged head for the flume of 2,90 m may be taken although in practice there will be a depression of the water level upstream of the central flume.

Hence

$$C_D = 0,989$$

$$Q = 13,21 \text{ m}^3/\text{s}$$

### C.1.5 Total discharge for the compound structure

Total  $Q = 43,59 + 13,21 = 56,80 \text{ m}^3/\text{s}$ .

**C.1.6 Uncertainty in flow measurement****C.1.6.1 Flank weirs**

$$\begin{aligned}
 X_h &= \pm 100/h \times \left[ e_r^2 + e_h^2 + e_z^2 + (2 \times 1,5)^2 \right]^{1/2} \\
 &= \pm 100/1750 \times \left[ 1^2 + 3^2 + 1^2 + (2 \times 1,5)^2 \right]^{1/2} \\
 &= \pm 0,26 \%.
 \end{aligned}$$

In this example the two flank weirs are taken together as having one width, 10,1 m. Since uncertainties are to be weighted according to discharge, and since the uncertainty in width measurement in each of the flank weirs is  $\pm 2$  mm, an uncertainty on the overall width may be taken as  $(2^2 + 2^2)^{1/2} = 2,8$  mm.

Then

$$X_b = 2,8/10\,100 \times 100 = 0,03 \%$$

From C.1.2,  $C_D = 0,994$ .

From 8.4, 9.4 and 9.6 of ISO 4374, the percentage uncertainty in the discharge coefficient (including  $C_v$ ) can be calculated as follows:

$$\begin{aligned}
 X_C &= \sqrt{[2 + 0,15 (1,80/1,86)]^2 + 1^2} \\
 &= 2,37 \%
 \end{aligned}$$

Therefore, the percentage uncertainty in the flow over the flank weirs is:

$$\begin{aligned}
 X_{Q,1} &= \left( X_C^2 + X_b^2 + 1,5^2 X_h^2 \right)^{1/2} \\
 &= \pm [2,37^2 + 0,03^2 + (1,5 \times 0,26)^2]^{1/2} \\
 &= \pm 2,40 \%
 \end{aligned}$$

**C.1.6.2 Central flume**

$$\begin{aligned}
 X_h &= 100/2\,900 [1^2 + 3^2 + 1^2 + (2 \times 1,5)^2]^{1/2} \\
 &= 0,15 \% \\
 X_b &= \frac{2}{1500} \times 100 = 0,13 \%
 \end{aligned}$$

From ISO 4359, equation (28), the percentage uncertainty in the combined coefficient  $C_V \cdot C_D$  is

$$X_C = \pm [1 + 20 (C_V - C_D)] \%$$

From C.1.4,  $C_D = 0,989$ , and since the discharge (13,21 m<sup>3</sup>/s) and  $H_1$  (3,01 m) are known,  $C_V$  can be determined as follows.

In a process of successive approximation, a first trial value for the velocity of approach may be taken as:



$$\bar{v}_1 = 13,21 / (2,5 \times 3,01) = 1,755 \text{ m/s}$$

Hence

$$\bar{v}_1^2 / 2g = 0,16 \text{ m}$$

and

$$h_1 = 3,01 - 0,16 = 2,85 \text{ m}$$

A second trial value for  $\bar{v}_1 = 13,21 / (2,5 \times 2,85) = 1,85 \text{ m/s}$  and further trials result in a value for  $h_1$  of 2,83 m.

Hence

$$C_v = (H_1/h_1)^{3/2} = (3,01/2,83)^{3/2} = 1,097$$

$$X_C = [1 + 20 (1,097 - 0,989)]$$

$$= 3,16 \%$$

Therefore, the percentage uncertainty in the flow through the central flume is:

$$X_{Q,2} = \pm [3,16^2 + 0,13^2 + (1,5 \times 0,16)^2]^{1/2}$$

$$= 3,17 \%$$

### C.1.6.3 Overall uncertainty

There is an additional uncertainty  $X_{tu} = 5 \%$  (see 9.2) in the discharge through the central flume, due to transferring the upstream total head level from the gauged flank weir to the flume. Hence, from equation 3,

$$X_Q = (1 / 56,80) \left[ 43,59 \times 2,40 + 13,21 \sqrt{(3,17^2 + 5^2)} \right]$$

$$= 3,22 \%$$

## C.2 Drowned (non-modular) flow

### C.2.1 General

Calculate the discharge for a two-part compound triangular profile weir in the non-modular flow range with head measurement taken at the flank weir and crest tapping taken at the low weir.

Relevant conditions are as follows:

Flank weir width	6,10 m
Flank weir height	0,61 m
Low weir width	3,05 m
Low weir height	0,61 m
Difference in crest levels	0,305 m

Gauged head (flank weir)	1,504 m
Crest-tapping pressure ( $h_p$ )	1,067 m
Adopted limit of accuracy of $Q$	1 %

The same accuracy of water level measurement, crest-tapping pressure measurement and width measurement are assumed as in C.1.

### C.2.2 Use of successive approximation method (see B.2.2.2)

In this case the flank weir is the gauging section, G, and the low weir is the crest-tapping section T. Since there are no other sections step 5 of B.2.2.2 does not apply. The crest-tapping section is lower than the gauging section, therefore  $\Delta^{TG}$  is positive.

#### Step 1

$$A^G = (1,504 + 0,61) 6,10 = 12,895 \text{ m}^2$$

#### Step 2

1st approximation

a)  $\bar{v}_1^G = 0$

b)  $h_{v,1}^G = 0$

c)  $H_1^G = 1,504 + 0 = 1,504 \text{ m}$

d)  $H_1^T = 1,504 + 0,305 = 1,809 \text{ m}$

e)  $h_p/H_1^T = 1,067/1,809 = 0,590$

$$C_{dr}^T = 0,88 \text{ and } H_2^T/H_1^T = 0,93 \text{ from Figure B.3}$$

f)  $H_2^T = 0,93 \times 1,809 = 1,682 \text{ m}$

g)  $H_2^G = 1,682 - (0,305) = 1,377 \text{ m}$

h)  $H_2^G/H_1^G = 1,377/1,504 = 0,916$

$$C_{dr}^G = 0,91 \text{ from Figure B.3}$$

i)  $Q^G = 0,633 \times \sqrt{(9,81)} \times 6,10 \times 0,91 \times 1,504^{3/2} = 20,299 \text{ m}^3/\text{s}$

#### Step 3

2nd approximation

a)  $\bar{v}_1^G = 20,299/12,895 = 1,574 \text{ m/s}$

b)  $h_{v,1}^G = 1,574^2/(2 \times 9,81) = 0,126 \text{ m}$

c)  $H_1^G = 1,504 + 0,126 = 1,630 \text{ m}$

$$d) H_1^T = 1,630 + 0,305 = 1,935 \text{ m}$$

$$e) h_p/H_1^T = 1,067/1,935 = 0,551$$

$$C_{dr}^T = 0,89 \text{ and } H_2^T/H_1^T = 0,925 \text{ from Figure B.3}$$

$$f) H_2^T = 0,925 \times 1,935 = 1,790 \text{ m}$$

$$g) H_2^G = 1,790 - 0,305 = 1,485 \text{ m}$$

$$h) H_2^G/H_1^G = 1,485/1,630 = 0,911$$

$$C_{dr}^G = 0,915 \text{ from Figure B.3}$$

$$i) Q^G = 12,094 \times 0,915 \times 1,630^{3/2} = 23,029 \text{ m}^3/\text{s}$$

Difference in successive values of  $Q^G = 11,9 \%$

3rd approximation

$$a) \bar{v}_1^G = 23,029/12,895 = 1,786 \text{ m/s}$$

$$b) h_{v,1}^G = 1,786^2/(2 \times 9,81) = 0,163 \text{ m}$$

$$c) H_1^G = 1,504 + 0,163 = 1,667 \text{ m}$$

$$d) H_1^T = 1,667 + 0,305 = 1,972 \text{ m}$$

$$e) h_p/H_1^T = 1,067/1,972 = 0,541$$

$$C_{dr}^T = 0,895 \text{ and } H_2^T/H_1^T = 0,92 \text{ from Figure B.3}$$

$$f) H_2^T = 0,92 \times 1,972 = 1,814 \text{ m}$$

$$g) H_2^G = 1,814 - 0,305 = 1,509 \text{ m}$$

$$h) H_2^G/H_1^G = 1,509/1,667 = 0,905$$

$$C_{dr}^G = 0,92 \text{ from Figure B.3}$$

$$i) Q^G = 12,094 \times 0,920 \times 1,667^{3/2} = 23,948 \text{ m}^3/\text{s}$$

Difference in successive values of  $Q^G = 3,8 \%$

4th approximation

$$a) \bar{v}_1^G = 23,948/12,895 = 1,857 \text{ m/s}$$

$$b) h_{v,1}^G = 1,857^2/(2 \times 9,81) = 0,176 \text{ m}$$

$$c) H_1^G = 1,504 + 0,176 = 1,680 \text{ m}$$

d)  $H_1^T = 1,680 + 0,305 = 1,985 \text{ m}$

e)  $h_p/H_1^T = 1,067/1,985 = 0,538$

$$C_{dr}^T = 0,895 \text{ and } H_2^T/H_1^T = 0,92 \text{ from Figure B.3}$$

f)  $H_2^T = 0,92 \times 1,985 = 1,826 \text{ m}$

g)  $H_2^G = 1,826 - 0,305 = 1,521 \text{ m}$

h)  $H_2^G/H_1^G = 1,521/1,680 = 0,905$

$$C_{dr}^G = 0,92 \text{ from Figure B.3}$$

i)  $Q^G = 12,094 \times 0,92 \times 1,680^{3/2} = 24,228 \text{ m}^3/\text{s}$

Difference in successive values of  $Q^G = 1,2 \%$

5th approximation

a)  $\bar{v}_1^G = 24,228/12,895 = 1,879 \text{ m/s}$

b)  $h_{v,1}^G = 1,879^2/(2 \times 9,81) = 0,180 \text{ m}$

c)  $H_1^G = 1,504 + 0,180 = 1,684 \text{ m}$

d)  $H_1^T = 1,684 + 0,305 = 1,989 \text{ m}$

e)  $h_p/H_1^T = 1,067/1,989 = 0,536 \text{ m}$

$$C_{dr}^T = 0,90 \text{ and } H_2^T/H_1^T = 0,92 \text{ from Figure B.3}$$

f)  $H_2^T = 0,92 \times 1,989 = 1,830 \text{ m}$

g)  $H_2^G = 1,830 - 0,305 = 1,525 \text{ m}$

h)  $H_2^G/H_1^G = 1,525/1,684 = 0,906$

$$C_{dr}^G = 0,92 \text{ from Figure B.3}$$

i)  $Q^G = 12,094 \times 0,92 \times 1,684^{3/2} = 24,315 \text{ m}^3/\text{s}$

Difference in successive values of  $Q^G = 0,36 \%$

#### Step 4

$$Q^T = 0,663 \times \sqrt{9,81} \times 3,05 \times 0,90 \times 1,989^{3/2} = 15,266 \text{ m}^3/\text{s}$$

#### Step 5

Total  $Q = 24,315 + 15,266 = 39,58 \text{ m}^3/\text{s}$

**C.2.3 Use of coefficient of velocity method (see B.2.2.3)**

Calculate the discharge of a compound weir in the non-modular flow range under the same conditions as in C.2.2.

As the flank weir is the gauging section, G, and the lower weir is the crest-tapping section, T,  $\Delta^{TG}$  and  $\Delta^{ST}$  are positive.

**Step 1**

- a)  $h_1^T = 1,504 + 0,305 = 1,809$  m
- b)  $h_p/h_1^T = 1,067/1,809 = 0,590$   
 $h_1^T/(h_1^T + p^T) = 1,809/(1,809 + 0,61) = 0,748$
- c)  $C_{dr}^T = 0,902$  from Figure B.4
- d)  $C_{dr}^T [h_1^T/(h_1^T + p^T)] = 0,902 \times 0,748 = 0,675$
- e)  $C_v^T = 1,199$  from Table C.1
- f)  $q^T = 4,824$  m<sup>3</sup>/s per metre of crest from Table C.2
- g)  $Q^T = 3,05 \times 0,902 (1,199 \times 4,824) = 15,912$  m<sup>3</sup>/s
- h)  $H_1^T = 1,199^{2/3} \times 1,809 = 2,042$  m

**Step 2**

To determine  $Q^S$  (flank weir), (in this case, the gauging section, G):

- a)  $H_2^T/H_1^T = 0,92$  from Figure B.3
- b)  $H_2^T = 0,92 \times 2,042 = 1,879$  m
- c)  $H_1^S = 2,042 - 0,305 = 1,737$  m
- d)  $H_2^S = 1,879 - 0,305 = 1,574$  m
- e)  $H_2^S/H_1^S = 1,574/1,737 = 0,906$
- f)  $C_{dr}^S = 0,92$  from Figure B.3
- g)  $q^S = 4,539$  m<sup>3</sup>/s per metre of crest from Table C.2
- h)  $Q^S = 6,10 \times 0,92 \times 4,539 = 25,473$  m<sup>3</sup>/s

**Step 3**

$$\text{Total } Q = 15,912 + 25,473 = 41,39 \text{ m}^3/\text{s}$$

**C.2.4 Uncertainty in flow measurement** (relating to the successive approximation method described in C.2.2).

**C.2.4.1 Flank weir**

$$X_h = (100/1504) \times [1^2 + 3^2 + 1^2 + (2 \times 1,5)^2]^{1/2}$$

$$= 0,30 \%$$

$$X = (100/1067) \times [1^2 + 3^2 + 1^2 + (2 \times 1,5)^2]^{1/2}$$

$$= 0,42 \%$$

$$X_b = 2/6100 \times 100$$

$$= 0,03 \%$$

From ISO 4360 the uncertainty in the discharge coefficient (including  $C_v$ ) is:

$$X_C = (10C_v - 9) \%$$

From the final (5th) approximation in C.2.2,  $C_{dr}^G = 0,92$

Also,  $h_1^G = 1,504$  and weir height  $p = 0,61$

$$\text{Hence } C_{dr}^G \times h_1/(h_1 + p) = 0,65$$

From Table C.1,  $C_v = 1,177$

$$X_C = (10 \times 1,177) - 9 = 2,77 \%$$

In addition, there is some uncertainty in the relationship for the drowned flow reduction factor. This has been estimated as:

$$X_{C,dr} = 3 \%$$

Hence, the uncertainty in discharge over the flank weir, ignoring water level and head transfer effects, is:

$$X_{Q,1} = \left( X_C^2 + X_b^2 + X_{C,h}^2 + 1,5^2 X_h^2 + 1,5^2 X_{h,p}^2 \right)^{1/2}$$

$$= [2,77^2 + 0,03^2 + 3^2 + (1,5^2 \times 0,30^2) + (1,5^2 \times 0,42^2)]^{1/2}$$

$$= 4,16 \%$$

**C.2.4.2 Low weir**

$$X_h = (100/1809) \times [1^2 + 3^2 + 1^2 + (2 \times 1,5)^2]^{1/2}$$

$$= 0,25 \%$$

$$X_{h,p} = 0,42 \%$$

$$X_b = 2/3050 \times 100$$

$$= 0,06 \%$$

For the approach channel to the low weir, the height  $h_1$  of the water surface level above the weir crest is not known. Since the discharge (15,266 m<sup>3</sup>/s) and  $H_1$  (1,989 m) are known,  $h_1$  can be determined by a method of successive approximation.

A first trial value for the velocity of approach may be taken as:

$$\bar{v}_1 = 15,266 / [(1,989 + 0,305) \times 3,05] = 2,182 \text{ m/s}$$

Hence

$$\frac{\bar{v}_1^2}{2g} = 2,182^2 / (2 \times 9,81) = 0,242 \text{ m}$$

$$h_1 = 1,989 - 0,242 = 1,747 \text{ m}$$

A second trial value is:

$$\bar{v}_1 = 15,266 / [(1,747 + 0,305) \times 3,05] = 2,439 \text{ m/s}$$

and further trials result in a value for  $h_1$  of 1,67 m. Also, the weir height  $p = 0,305$  m and, from the 5th approximation in C.2.2,  $C_{dr}^T = 0,90$

$$C_{dr}^T \times h_1 / (h_1 + p) = 0,90 \times [1,67 / (1,67 + 0,305)] = 0,76$$

From Table C.1,  $C_v = 1,302$

$$\begin{aligned} X_C &= (10 \times 1,302 - 9) \\ &= 4,02 \% \end{aligned}$$

$$X_{C,dr} = 3 \% \text{ as before}$$

Hence the uncertainty in the discharge over the low weir, ignoring water level and head transfer effects, is:

$$\begin{aligned} X_{Q,2} &= [4,02^2 + 0,06^2 + 3^2 + (1,5^2 \times 0,25^2) + (1,5^2 \times 0,42^2)]^{1/2} \\ &= 5,07 \% \end{aligned}$$

#### C.2.4.3 Overall uncertainty

For the low weir, an additional uncertainty  $X_{tu} = 5\%$  has to be included, due to the transfer of the upstream total head level from the gauged flank weir.

Calculation of the submerged flow over the flank weir requires transferring the upstream total head level to the low weir, as well as transferring the downstream total head level from the low weir to the flank weir. Hence additional uncertainties of  $X_{tu} = 5\%$  and  $X_{td} = 10\%$  have to be included.

$$\begin{aligned} X_Q &= 1/39,58 \left[ 24,315 \sqrt{(4,16^2 + 5^2 + 10^2)} + 15,266 \sqrt{(5,07^2 + 5^2)} \right] \\ &= 10,1 \% \end{aligned}$$

**Table C.1 — Values of  $C_v$  in terms of  $C_{dr}(\frac{h_1}{h_1+p})$  for rectangular profile weirs**

$C_{dr}(\frac{h_1}{h_1+p})$	Values of $C_v$									
	Increments of $C_{dr}(\frac{h_1}{h_1+p})$									
	0,00	0,01	0,02	0,03	0,04	0,05	0,06	0,07	0,08	0,09
<b>0,0</b>	1,000	1,000	1,000	1,001	1,001	1,001	1,001	1,002	1,002	1,003
<b>0,1</b>	1,003	1,004	1,004	1,005	1,006	1,007	1,008	1,009	1,010	1,011
<b>0,2</b>	1,012	1,013	1,015	1,016	1,017	1,019	1,021	1,022	1,024	1,026
<b>0,3</b>	1,028	1,030	1,032	1,034	1,037	1,039	1,042	1,044	1,047	1,050
<b>0,4</b>	1,053	1,056	1,059	1,062	1,065	1,069	1,072	1,076	1,080	1,084
<b>0,5</b>	1,088	1,093	1,097	1,102	1,107	1,112	1,117	1,123	1,129	1,135
<b>0,6</b>	1,141	1,147	1,154	1,162	1,169	1,177	1,185	1,194	1,204	1,214
<b>0,7</b>	1,224	1,234	1,246	1,258	1,272	1,286	1,302			

NOTE 1  $C_{dr} = 1$  in the modular flow range ( $h_p/H_1 \leq 0,24$ ).

NOTE 2 A rectangular approach channel is assumed.

Licensed Copy: Institute Of Technology Tallaght, Institute of Technology, Tue Sep 05 09:11:03 BST 2006, Uncontrolled Copy, (c) BSI



Table C.2 — Modular discharge over a triangular profile weir per metre of crest in terms of upstream head

Head <i>H</i> m	Modular discharge <i>q</i> m <sup>3</sup> /s									
	Increments of head, <i>H</i> m									
	0,000	0,001	0,002	0,003	0,004	0,005	0,006	0,007	0,008	0,009
0,000	0,000 00	0,000 06	0,000 18	0,000 33	0,000 50	0,000 70	0,000 92	0,001 16	0,001 42	0,001 69
0,010	0,001 98	0,002 29	0,002 61	0,002 94	0,003 28	0,003 64	0,004 01	0,004 39	0,004 79	0,005 19
0,020	0,005 61	0,006 03	0,006 47	0,006 92	0,007 37	0,007 84	0,008 31	0,008 80	0,009 29	0,009 79
0,030	0,010 30	0,010 82	0,011 35	0,011 89	0,012 43	0,012 98	0,013 54	0,014 11	0,014 69	0,015 27
0,040	0,015 86	0,016 46	0,017 07	0,017 68	0,018 30	0,018 93	0,019 56	0,020 20	0,020 85	0,021 50
0,050	0,022 17	0,022 83	0,023 51	0,024 19	0,024 88	0,025 57	0,026 27	0,026 98	0,027 69	0,028 41
0,060	0,029 14	0,029 87	0,030 61	0,031 35	0,032 10	0,032 86	0,033 62	0,034 38	0,035 16	0,035 93
0,070	0,036 72	0,037 51	0,038 30	0,039 10	0,039 91	0,040 72	0,041 54	0,042 36	0,043 19	0,044 02
0,080	0,044 86	0,045 71	0,046 55	0,047 41	0,048 27	0,049 13	0,050 00	0,050 88	0,051 76	0,052 64
0,090	0,053 53	0,054 43	0,055 32	0,056 23	0,057 14	0,058 05	0,058 97	0,059 90	0,060 82	0,061 76
0,100	0,062 70	0,063 64	0,064 59	0,065 54	0,066 49	0,067 46	0,068 42	0,069 39	0,070 37	0,071 35
0,110	0,072 33	0,073 32	0,074 31	0,075 31	0,076 31	0,077 32	0,078 33	0,079 34	0,080 36	0,081 39
0,120	0,082 42	0,083 45	0,084 48	0,085 53	0,086 57	0,087 62	0,088 67	0,089 73	0,090 79	0,091 86
0,130	0,092 93	0,094 00	0,095 08	0,096 16	0,097 25	0,098 34	0,099 44	0,100 54	0,101 64	0,102 74
0,140	0,103 86	0,104 97	0,106 09	0,107 21	0,108 34	0,109 47	0,110 60	0,111 74	0,112 88	0,114 03
0,150	0,115 18	0,116 33	0,117 49	0,118 65	0,119 82	0,120 99	0,122 16	0,123 34	0,124 52	0,125 70
0,160	0,126 89	0,128 08	0,129 27	0,130 47	0,131 68	0,132 88	0,134 09	0,135 30	0,136 52	0,137 74
0,170	0,138 97	0,140 19	0,141 43	0,142 66	0,143 90	0,145 14	0,146 39	0,147 64	0,148 89	0,150 15
0,180	0,151 41	0,152 67	0,153 94	0,155 21	0,156 48	0,157 76	0,159 04	0,160 32	0,161 61	0,162 90
0,190	0,164 20	0,165 50	0,166 80	0,168 10	0,169 41	0,170 72	0,172 04	0,173 36	0,174 68	0,176 00
0,200	0,177 33	0,178 66	0,180 00	0,181 34	0,182 68	0,184 02	0,185 37	0,186 72	0,188 08	0,189 43
0,210	0,190 80	0,192 16	0,193 53	0,194 90	0,196 27	0,197 65	0,199 03	0,200 41	0,201 80	0,203 19
0,220	0,204 58	0,205 98	0,207 38	0,208 78	0,210 19	0,211 60	0,213 01	0,214 43	0,215 84	0,217 27
0,230	0,218 69	0,220 12	0,221 55	0,222 98	0,224 42	0,225 86	0,227 30	0,228 75	0,230 20	0,231 65
0,240	0,233 11	0,234 57	0,236 03	0,237 49	0,238 96	0,240 43	0,241 90	0,243 38	0,244 86	0,246 34
0,250	0,247 83	0,249 32	0,250 81	0,252 30	0,253 80	0,255 30	0,256 80	0,258 31	0,259 82	0,261 33
0,260	0,262 84	0,264 36	0,265 88	0,267 41	0,268 93	0,270 46	0,271 99	0,273 53	0,275 07	0,276 61
0,270	0,278 15	0,279 70	0,281 25	0,282 80	0,284 36	0,285 92	0,287 48	0,289 04	0,290 61	0,292 18
0,280	0,293 75	0,295 32	0,296 90	0,298 48	0,300 07	0,301 65	0,303 24	0,304 83	0,306 43	0,308 02
0,290	0,309 62	0,311 23	0,312 83	0,314 44	0,316 05	0,317 67	0,319 28	0,320 90	0,322 52	0,324 15
0,300	0,325 78	0,327 41	0,329 04	0,330 68	0,332 31	0,333 96	0,335 60	0,337 25	0,338 89	0,340 55
0,310	0,342 20	0,343 86	0,345 52	0,347 18	0,348 85	0,350 51	0,352 18	0,353 86	0,355 53	0,357 21
0,320	0,358 89	0,360 58	0,362 26	0,363 95	0,365 64	0,367 34	0,369 03	0,370 73	0,372 43	0,374 14
0,330	0,375 85	0,377 55	0,379 27	0,380 98	0,382 70	0,384 42	0,386 14	0,387 87	0,389 59	0,391 33
0,340	0,393 06	0,394 79	0,396 53	0,398 27	0,400 01	0,401 76	0,403 51	0,405 26	0,407 01	0,408 77
0,350	0,410 53	0,412 29	0,414 05	0,415 82	0,417 58	0,419 35	0,421 13	0,422 90	0,424 68	0,426 46
0,360	0,428 24	0,430 03	0,431 82	0,433 61	0,435 40	0,437 20	0,439 00	0,440 80	0,442 60	0,444 40
0,370	0,446 21	0,448 02	0,449 83	0,451 65	0,453 47	0,455 29	0,457 11	0,458 93	0,460 76	0,462 59
0,380	0,464 42	0,466 26	0,468 09	0,469 93	0,471 78	0,473 62	0,475 47	0,477 31	0,479 17	0,481 02
0,390	0,482 88	0,484 73	0,486 59	0,488 46	0,490 32	0,492 19	0,494 06	0,495 93	0,497 81	0,499 69

**Table C.2 — Modular discharge over a triangular profile weir per metre of crest in terms of upstream head**  
(continued)

Head <i>H</i>  m	Modular discharge <i>q</i>  m <sup>3</sup> /s									
	Increments of head, <i>H</i> m									
	0,000	0,001	0,002	0,003	0,004	0,005	0,006	0,007	0,008	0,009
0,400	0,50157	0,50345	0,50533	0,50722	0,50911	0,51100	0,51289	0,51479	0,51669	0,51859
0,410	0,52049	0,52240	0,52431	0,52622	0,52813	0,53004	0,53196	0,53388	0,53580	0,53772
0,420	0,53965	0,54158	0,54351	0,54544	0,54738	0,54932	0,55126	0,55320	0,55514	0,55709
0,430	0,55904	0,56099	0,56294	0,56490	0,56686	0,56882	0,57078	0,57274	0,57471	0,57668
0,440	0,57865	0,58063	0,58260	0,58458	0,58656	0,58854	0,59053	0,59252	0,59450	0,59650
0,450	0,59849	0,60049	0,60248	0,60448	0,60649	0,60849	0,61050	0,61251	0,61452	0,61653
0,460	0,61855	0,62057	0,62259	0,62461	0,62664	0,62866	0,63069	0,63272	0,63476	0,63679
0,470	0,63883	0,64087	0,64291	0,64496	0,64700	0,64905	0,65110	0,65315	0,65521	0,65727
0,480	0,65933	0,66139	0,66345	0,66552	0,66758	0,66965	0,67173	0,67380	0,67588	0,67796
0,490	0,68004	0,68212	0,68420	0,68629	0,68838	0,69047	0,69257	0,69466	0,69676	0,69886
0,500	0,70096	0,70306	0,70517	0,70728	0,70939	0,71150	0,71362	0,71573	0,71785	0,71997
0,510	0,72209	0,72422	0,72635	0,72847	0,73061	0,73274	0,73487	0,73701	0,73915	0,74129
0,520	0,74344	0,74558	0,74773	0,74988	0,75203	0,75418	0,75634	0,75850	0,76066	0,76282
0,530	0,76498	0,76715	0,76932	0,77149	0,77366	0,77583	0,77801	0,78019	0,78237	0,78455
0,540	0,78674	0,78892	0,79111	0,79330	0,79549	0,79769	0,79988	0,80208	0,80428	0,80649
0,550	0,80869	0,81090	0,81311	0,81532	0,81753	0,81974	0,82196	0,82418	0,82640	0,82862
0,560	0,83085	0,83307	0,83530	0,83753	0,83976	0,84200	0,84423	0,84647	0,84871	0,85096
0,570	0,85320	0,85545	0,85769	0,85994	0,86220	0,86445	0,86671	0,86896	0,87122	0,87349
0,580	0,87575	0,87802	0,88028	0,88255	0,88483	0,88710	0,88937	0,89165	0,89393	0,89621
0,590	0,89850	0,90078	0,90307	0,90536	0,90765	0,90994	0,91224	0,91453	0,91683	0,91913
0,600	0,92144	0,92374	0,92605	0,92836	0,93067	0,93298	0,93529	0,93761	0,93993	0,94225
0,610	0,94457	0,94689	0,94922	0,95154	0,95387	0,95620	0,95854	0,96087	0,96321	0,96555
0,620	0,96789	0,97023	0,97258	0,97492	0,97727	0,97962	0,98197	0,98433	0,98668	0,98904
0,630	0,99140	0,99376	0,99612	0,99849	1,00086	1,00323	1,00560	1,00797	1,01034	1,01272
0,640	1,01510	1,01748	1,01986	1,02224	1,02463	1,02702	1,02941	1,03180	1,03419	1,03659
0,650	1,03898	1,04138	1,04378	1,04618	1,04859	1,05099	1,05340	1,05581	1,05822	1,06064
0,660	1,06305	1,06547	1,06789	1,07031	1,07273	1,07515	1,07758	1,08001	1,08244	1,08487
0,670	1,08730	1,08974	1,09217	1,09461	1,09705	1,09950	1,10194	1,10439	1,10683	1,10928
0,680	1,11174	1,11419	1,11664	1,11910	1,12156	1,12402	1,12648	1,12895	1,13141	1,13388
0,690	1,13635	1,13882	1,14129	1,14377	1,14624	1,14872	1,15120	1,15369	1,15617	1,15865
0,700	1,16114	1,16363	1,16612	1,16861	1,17111	1,17360	1,17610	1,17860	1,18110	1,18361
0,710	1,18611	1,18862	1,19113	1,19364	1,19615	1,19866	1,20118	1,20370	1,20622	1,20874
0,720	1,21126	1,21378	1,21631	1,21884	1,22137	1,22390	1,22643	1,22897	1,23150	1,23404
0,730	1,23658	1,23912	1,24167	1,24421	1,24676	1,24931	1,25186	1,25441	1,25696	1,25952
0,740	1,26208	1,26464	1,26720	1,26976	1,27232	1,27489	1,27746	1,28003	1,28260	1,28517
0,750	1,28775	1,29032	1,29290	1,29548	1,29806	1,30064	1,30323	1,30582	1,30840	1,31099
0,760	1,31359	1,31618	1,31877	1,32137	1,32397	1,32657	1,32917	1,33178	1,33438	1,33699
0,770	1,33960	1,34221	1,34482	1,34743	1,35005	1,35267	1,35529	1,35791	1,36053	1,36315
0,780	1,36578	1,36841	1,37103	1,37367	1,37630	1,37893	1,38157	1,38420	1,38684	1,38948
0,790	1,39213	1,39477	1,39742	1,40006	1,40271	1,40536	1,40802	1,41067	1,41333	1,41598

**Table C.2 — Modular discharge over a triangular profile weir per metre of crest in terms of upstream head**  
(continued)

Head <i>H</i>  m	Modular discharge <i>q</i>  m <sup>3</sup> /s									
	Increments of head, <i>H</i> m									
	0,000	0,001	0,002	0,003	0,004	0,005	0,006	0,007	0,008	0,009
0,800	1,41864	1,42130	1,42397	1,42663	1,42930	1,43196	1,43463	1,43730	1,43998	1,44265
0,810	1,44533	1,44800	1,45068	1,45336	1,45605	1,45873	1,46141	1,46410	1,46679	1,46948
0,820	1,47217	1,47487	1,47756	1,48026	1,48296	1,48566	1,48836	1,49106	1,49377	1,49648
0,830	1,49919	1,50190	1,50461	1,50732	1,51004	1,51275	1,51547	1,51819	1,52091	1,52364
0,840	1,52636	1,52909	1,53182	1,53454	1,53728	1,54001	1,54274	1,54548	1,54822	1,55096
0,850	1,55370	1,55644	1,55918	1,56193	1,56468	1,56743	1,57018	1,57293	1,57568	1,57844
0,860	1,58120	1,58396	1,58672	1,58948	1,59224	1,59501	1,59777	1,60054	1,60331	1,60608
0,870	1,60886	1,61163	1,61441	1,61718	1,61996	1,62275	1,62553	1,62831	1,63110	1,63389
0,880	1,63667	1,63946	1,64226	1,64505	1,64785	1,65064	1,65344	1,65624	1,65904	1,66185
0,890	1,66465	1,66746	1,67027	1,67307	1,67589	1,67870	1,68151	1,68433	1,68715	1,68997
0,900	1,69279	1,69561	1,69843	1,70126	1,70408	1,70691	1,70974	1,71257	1,71541	1,71824
0,910	1,72108	1,72391	1,72675	1,72959	1,73244	1,73528	1,73813	1,74097	1,74382	1,74667
0,920	1,74952	1,75238	1,75523	1,75809	1,76095	1,76381	1,76667	1,76953	1,77239	1,77526
0,930	1,77813	1,78100	1,78387	1,78674	1,78961	1,79249	1,79536	1,79824	1,80112	1,80400
0,940	1,80688	1,80977	1,81265	1,81554	1,81843	1,82132	1,82421	1,82710	1,83000	1,83289
0,950	1,83579	1,83869	1,84159	1,84450	1,84740	1,85030	1,85321	1,85612	1,85903	1,86194
0,960	1,86485	1,86777	1,87069	1,87360	1,87652	1,87944	1,88237	1,88529	1,88821	1,89114
0,970	1,89407	1,89700	1,89993	1,90286	1,90580	1,90873	1,91167	1,91461	1,91755	1,92049
0,980	1,92343	1,92638	1,92933	1,93227	1,93522	1,93817	1,94113	1,94408	1,94703	1,94999
0,990	1,95295	1,95591	1,95887	1,96183	1,96480	1,96776	1,97073	1,97370	1,97667	1,97964
1,000	1,98261	1,98559	1,98857	1,99154	1,99452	1,99750	2,00048	2,00347	2,00645	2,00944
1,010	2,01243	2,01542	2,01841	2,02140	2,02439	2,02739	2,03039	2,03339	2,03638	2,03939
1,020	2,04239	2,04539	2,04840	2,05141	2,05441	2,05742	2,06044	2,06345	2,06646	2,06948
1,030	2,07250	2,07552	2,07854	2,08156	2,08458	2,08761	2,09063	2,09366	2,09669	2,09972
1,040	2,10275	2,10579	2,10882	2,11186	2,11490	2,11794	2,12098	2,12402	2,12706	2,13011
1,050	2,13315	2,13620	2,13925	2,14230	2,14535	2,14841	2,15146	2,15452	2,15758	2,16064
1,060	2,16370	2,16676	2,16983	2,17289	2,17596	2,17903	2,18210	2,18517	2,18824	2,19131
1,070	2,19439	2,19747	2,20055	2,20363	2,20671	2,20979	2,21287	2,21596	2,21905	2,22213
1,080	2,22522	2,22832	2,23141	2,23450	2,23760	2,24070	2,24379	2,24689	2,25000	2,25310
1,090	2,25620	2,25931	2,26241	2,26552	2,26863	2,27174	2,27486	2,27797	2,28109	2,28420
1,100	2,28732	2,29044	2,29356	2,29669	2,29981	2,30293	2,30606	2,30919	2,31232	2,31545
1,110	2,31858	2,32172	2,32485	2,32799	2,33113	2,33427	2,33741	2,34055	2,34369	2,34684
1,120	2,34999	2,35313	2,35628	2,35943	2,36259	2,36574	2,36889	2,37205	2,37521	2,37837
1,130	2,38153	2,38469	2,38785	2,39102	2,39419	2,39735	2,40052	2,40369	2,40686	2,41004
1,140	2,41321	2,41639	2,41957	2,42274	2,42592	2,42911	2,43229	2,43547	2,43866	2,44185
1,150	2,44503	2,44822	2,45142	2,45461	2,45780	2,46100	2,46419	2,46739	2,47059	2,47379
1,160	2,47700	2,48020	2,48340	2,48661	2,48982	2,49303	2,49624	2,49945	2,50266	2,50588
1,170	2,50909	2,51231	2,51553	2,51875	2,52197	2,52520	2,52842	2,53165	2,53487	2,53810
1,180	2,54133	2,54456	2,54779	2,55103	2,55426	2,55750	2,56074	2,56398	2,56722	2,57046
1,190	2,57370	2,57695	2,58020	2,58344	2,58669	2,58994	2,59319	2,59645	2,59970	2,60296

**Table C.2 — Modular discharge over a triangular profile weir per metre of crest in terms of upstream head**  
(continued)

Head <i>H</i>  m	Modular discharge <i>q</i>  m <sup>3</sup> /s									
	Increments of head, <i>H</i> m									
	0,000	0,001	0,002	0,003	0,004	0,005	0,006	0,007	0,008	0,009
1,200	2,60621	2,60947	2,61273	2,61599	2,61926	2,62252	2,62579	2,62905	2,63232	2,63559
1,210	2,63886	2,64213	2,64540	2,64868	2,65196	2,65523	2,65851	2,66179	2,66507	2,66836
1,220	2,67154	2,67493	2,67821	2,68150	2,68479	2,68808	2,69137	2,69467	2,69796	2,70126
1,230	2,70456	2,70785	2,71115	2,71446	2,71776	2,72106	2,72437	2,72768	2,73098	2,73429
1,240	2,73760	2,74092	2,74423	2,74755	2,75086	2,75418	2,75750	2,76082	2,76414	2,76746
1,250	2,77079	2,77411	2,77744	2,78077	2,78410	2,78743	2,79076	2,79409	2,79743	2,80077
1,260	2,80410	2,80744	2,81078	2,81412	2,81747	2,82081	2,82416	2,82750	2,83085	2,83420
1,270	2,83755	2,84090	2,84426	2,84761	2,85097	2,85433	2,85768	2,86104	2,86441	2,86777
1,280	2,87113	2,87450	2,87786	2,88123	2,88460	2,88797	2,89134	2,89472	2,89809	2,90147
1,290	2,90484	2,90822	2,91160	2,91498	2,91837	2,92175	2,92513	2,92852	2,93191	2,93530
1,300	2,93869	2,94208	2,94547	2,94886	2,95226	2,95566	2,95905	2,96245	2,96585	2,96926
1,310	2,97266	2,97606	2,97947	2,98288	2,98629	2,98969	2,99311	2,99652	2,99993	3,00335
1,320	3,00676	3,01018	3,01360	3,01702	3,02044	3,02386	3,02729	3,03071	3,03414	3,03757
1,330	3,04099	3,04443	3,04786	3,05129	3,05472	3,05816	3,06160	3,06503	3,06847	3,07191
1,340	3,07536	3,07880	3,08224	3,08569	3,08914	3,09258	3,09603	3,09949	3,10294	3,10639
1,350	3,10985	3,11330	3,11676	3,12022	3,12368	3,12714	3,13060	3,13406	3,13753	3,14100
1,360	3,14446	3,14793	3,15140	3,15487	3,15835	3,16182	3,16530	3,16877	3,17225	3,17573
1,370	3,17921	3,18269	3,18617	3,18966	3,19314	3,19663	3,20012	3,20361	3,20710	3,21059
1,380	3,21408	3,21758	3,22107	3,22457	3,22807	3,23156	3,23507	3,23857	3,24207	3,24557
1,390	3,24908	3,25259	3,25609	3,25960	3,26311	3,26663	3,27014	3,27365	3,27717	3,28069
1,400	3,28421	3,28772	3,29125	3,29477	3,29829	3,30181	3,30534	3,30887	3,31240	3,31593
1,410	3,31946	3,32299	3,32652	3,33006	3,33359	3,33713	3,34067	3,34421	3,34775	3,35129
1,420	3,35483	3,35838	3,36192	3,36547	3,36902	3,37257	3,37612	3,37967	3,38322	3,38678
1,430	3,39033	3,39389	3,39745	3,40101	3,40457	3,40813	3,41169	3,41526	3,41882	3,42239
1,440	3,42596	3,42953	3,43310	3,43667	3,44024	3,44382	3,44739	3,45097	3,45455	3,45813
1,450	3,46171	3,46529	3,46887	3,47246	3,47604	3,47963	3,48321	3,48680	3,49039	3,49399
1,460	3,49758	3,50117	3,50477	3,50836	3,51196	3,51556	3,51916	3,52276	3,52637	3,52997
1,470	3,53357	3,53718	3,54079	3,54440	3,54801	3,55162	3,55523	3,55884	3,56246	3,56608
1,480	3,56969	3,57331	3,57693	3,58055	3,58417	3,58780	3,59142	3,59505	3,59867	3,60230
1,490	3,60593	3,60956	3,61320	3,61683	3,62046	3,62410	3,62774	3,63137	3,63501	3,63865
1,500	3,64229	3,64594	3,64958	3,65323	3,65687	3,66052	3,66417	3,66782	3,67147	3,67512
1,510	3,67878	3,68243	3,68609	3,68975	3,69341	3,69707	3,70073	3,70439	3,70805	3,71172
1,520	3,71538	3,71905	3,72272	3,72639	3,73006	3,73373	3,73740	3,74108	3,74475	3,74843
1,530	3,75211	3,75579	3,75947	3,76315	3,76683	3,77052	3,77420	3,77789	3,78157	3,78526
1,540	3,78895	3,79264	3,79634	3,80003	3,80373	3,80742	3,81112	3,81482	3,81852	3,82222
1,550	3,82592	3,82962	3,83333	3,83703	3,84074	3,84445	3,84816	3,85187	3,85558	3,85929
1,560	3,86300	3,86672	3,87043	3,87415	3,87787	3,88159	3,88531	3,88903	3,89276	3,89648
1,570	3,90021	3,90393	3,90766	3,91139	3,91512	3,91885	3,92259	3,92632	3,93006	3,93379
1,580	3,93753	3,94127	3,94501	3,94875	3,95249	3,95624	3,95998	3,96373	3,96747	3,97122
1,590	3,97497	3,97872	3,98247	3,98623	3,98998	3,99374	3,99749	4,00125	4,00501	4,00877

Table C.2 — Modular discharge over a triangular profile weir per metre of crest in terms of upstream head  
(continued)

Head <i>H</i> m	Modular discharge <i>q</i> m <sup>3</sup> /s									
	Increments of head, <i>H</i> m									
	0,000	0,001	0,002	0,003	0,004	0,005	0,006	0,007	0,008	0,009
1,600	4,01253	4,01629	4,02005	4,02382	4,02759	4,03135	4,03512	4,03889	4,04266	4,04643
1,610	4,05021	4,05398	4,05775	4,06153	4,06531	4,06909	4,07287	4,07665	4,08043	4,08421
1,620	4,08800	4,09178	4,09557	4,09936	4,10315	4,10694	4,11073	4,11452	4,11832	4,12211
1,630	4,12591	4,12971	4,13350	4,13730	4,14111	4,14491	4,14871	4,15252	4,15632	4,16013
1,640	4,16394	4,16774	4,17155	4,17537	4,17918	4,18299	4,18681	4,19062	4,19444	4,19826
1,650	4,20208	4,20590	4,20972	4,21354	4,21737	4,22119	4,22502	4,22885	4,23268	4,23651
1,660	4,24034	4,24417	4,24800	4,25184	4,25567	4,25951	4,26335	4,26719	4,27103	4,27487
1,670	4,27871	4,28255	4,28640	4,29025	4,29409	4,29794	4,30179	4,30564	4,30949	4,31335
1,680	4,31720	4,32105	4,32491	4,32877	4,33263	4,33649	4,34035	4,34421	4,34807	4,35194
1,690	4,35580	4,35967	4,36354	4,36741	4,37128	4,37515	4,37902	4,38289	4,38677	4,39064
1,700	4,39452	4,39840	4,40228	4,40616	4,41004	4,41392	4,41781	4,42169	4,42558	4,42947
1,710	4,43335	4,43724	4,44113	4,44503	4,44892	4,45281	4,45671	4,46060	4,46450	4,46840
1,720	4,47230	4,47620	4,48010	4,48401	4,48791	4,49182	4,49572	4,49963	4,50354	4,50745
1,730	4,51136	4,51527	4,51918	4,52310	4,52701	4,53093	4,53485	4,53877	4,54269	4,54661
1,740	4,55053	4,55445	4,55838	4,56230	4,56623	4,57016	4,57409	4,57802	4,58195	4,58588
1,750	4,58982	4,59375	4,59769	4,60162	4,60556	4,60950	4,61344	4,61738	4,62133	4,62527
1,760	4,62921	4,63316	4,63711	4,64105	4,64500	4,64895	4,65291	4,65686	4,66081	4,66477
1,770	4,66872	4,67268	4,67664	4,68060	4,68456	4,68852	4,69248	4,69645	4,70041	4,70438
1,780	4,70834	4,71231	4,71628	4,72025	4,72422	4,72820	4,73217	4,73615	4,74012	4,74410
1,790	4,74808	4,75206	4,75604	4,76002	4,76400	4,76799	4,77197	4,77596	4,77994	4,78393
1,800	4,78792	4,79191	4,79590	4,79990	4,80389	4,80788	4,81188	4,81588	4,81988	4,82388
1,810	4,82788	4,83188	4,83588	4,83988	4,84389	4,84789	4,85190	4,85591	4,85992	4,86393
1,820	4,86794	4,87195	4,87597	4,87998	4,88400	4,88801	4,89203	4,89605	4,90007	4,90409
1,830	4,90812	4,91214	4,91616	4,92019	4,92422	4,92825	4,93227	4,93630	4,94034	4,94437
1,840	4,94840	4,95244	4,95647	4,96051	4,96455	4,96859	4,97263	4,97667	4,98071	4,98475
1,850	4,98880	4,99284	4,99689	5,00094	5,00499	5,00904	5,01309	5,01714	5,02119	5,02525
1,860	5,02930	5,03336	5,03741	5,04147	5,04553	5,04959	5,05366	5,05772	5,06178	5,06585
1,870	5,06991	5,07398	5,07805	5,08212	5,08619	5,09026	5,09433	5,09841	5,10248	5,10656
1,880	5,11064	5,11471	5,11879	5,12287	5,12696	5,13104	5,13512	5,13921	5,14329	5,14738
1,890	5,15147	5,15556	5,15965	5,16374	5,16783	5,17192	5,17602	5,18011	5,18421	5,18831
1,900	5,19241	5,19651	5,20061	5,20471	5,20881	5,21292	5,21702	5,22113	5,22523	5,22934
1,910	5,23345	5,23756	5,24167	5,24579	5,24990	5,25402	5,25813	5,26225	5,26637	5,27049
1,920	5,27461	5,27873	5,28285	5,28697	5,29110	5,29522	5,29935	5,30348	5,30761	5,31174
1,930	5,31587	5,32000	5,32413	5,32827	5,33240	5,33654	5,34068	5,34481	5,34895	5,35309
1,940	5,35724	5,36138	5,36552	5,36967	5,37381	5,37796	5,38211	5,38626	5,39041	5,39456
1,950	5,39871	5,40287	5,40702	5,41117	5,41533	5,41949	5,42365	5,42781	5,43197	5,43613
1,960	5,44029	5,44446	5,44862	5,45279	5,45696	5,46112	5,46529	5,46946	5,47364	5,47781
1,970	5,48198	5,48616	5,49033	5,49451	5,49869	5,50287	5,50704	5,51123	5,51541	5,51959
1,980	5,52378	5,52796	5,53215	5,53633	5,54052	5,54471	5,54890	5,55309	5,55729	5,56148
1,990	5,56567	5,56987	5,57407	5,57827	5,58246	5,58666	5,59087	5,59507	5,59927	5,60347

**Table C.2 — Modular discharge over a triangular profile weir per metre of crest in terms of upstream head**  
(continued)

Head <i>H</i>  m	Modular discharge <i>q</i>  m <sup>3</sup> /s									
	Increments of head, <i>H</i> m									
	0,000	0,001	0,002	0,003	0,004	0,005	0,006	0,007	0,008	0,009
2,000	5,60768	5,61189	5,61609	5,62030	5,62451	5,62872	5,63293	5,63715	5,64136	5,64557
2,010	5,64979	5,65401	5,65822	5,66244	5,66666	5,67088	5,67511	5,67933	5,68355	5,68778
2,020	5,69200	5,69623	5,70046	5,70469	5,70892	5,71315	5,71738	5,72162	5,72585	5,73009
2,030	5,73432	5,73856	5,74280	5,74704	5,75128	5,75552	5,75977	5,76401	5,76826	5,77250
2,040	5,77675	5,78100	5,78525	5,78950	5,79375	5,79800	5,80225	5,80651	5,81076	5,81502
2,050	5,81928	5,82354	5,82779	5,83206	5,83632	5,84058	5,84484	5,84911	5,85337	5,85764
2,060	5,86191	5,86618	5,87045	5,87472	5,87899	5,88326	5,88754	5,89181	5,89609	5,90037
2,070	5,90464	5,90892	5,91320	5,91749	5,92177	5,92605	5,93034	5,93462	5,93891	5,94319
2,080	5,94748	5,95177	5,95606	5,96035	5,96465	5,96894	5,97324	5,97753	5,98183	5,98613
2,090	5,99043	5,99472	5,99903	6,00333	6,00763	6,01193	6,01624	6,02055	6,02485	6,02916
2,100	6,03347	6,03778	6,04209	6,04640	6,05072	6,05503	6,05935	6,06366	6,06798	6,07230
2,110	6,07662	6,08094	6,08526	6,08958	6,09391	6,09823	6,10256	6,10688	6,11121	6,11554
2,120	6,11987	6,12420	6,12853	6,13286	6,13720	6,14153	6,14587	6,15020	6,15454	6,15888
2,130	6,16322	6,16756	6,17190	6,17624	6,18059	6,18493	6,18928	6,19363	6,19797	6,20232
2,140	6,20667	6,21102	6,21538	6,21973	6,22408	6,22844	6,23279	6,23715	6,24151	6,24587
2,150	6,25023	6,25459	6,25895	6,26332	6,26768	6,27204	6,27641	6,28078	6,28515	6,28952
2,160	6,29389	6,29826	6,30263	6,30700	6,31138	6,31575	6,32013	6,32451	6,32888	6,33326
2,170	6,33764	6,34202	6,34641	6,35079	6,35518	6,35956	6,36395	6,36833	6,37272	6,37711
2,180	6,38150	6,38589	6,39029	6,39468	6,39907	6,40347	6,40787	6,41226	6,41666	6,42106
2,190	6,42546	6,42986	6,43427	6,43867	6,44307	6,44748	6,45189	6,45629	6,46070	6,46511
2,200	6,46952	6,47393	6,47835	6,48276	6,48717	6,49159	6,49601	6,50042	6,50484	6,50926
2,210	6,51368	6,51810	6,52253	6,52695	6,53138	6,53580	6,54023	6,54465	6,54908	6,55351
2,220	6,55794	6,56238	6,56681	6,57124	6,57568	6,58011	6,58455	6,58899	6,59342	6,59786
2,230	6,60230	6,60675	6,61119	6,61563	6,62008	6,62452	6,62897	6,63342	6,63786	6,64231
2,240	6,64676	6,65122	6,65567	6,66012	6,66458	6,66903	6,67349	6,67794	6,68240	6,68686
2,250	6,69132	6,69578	6,70025	6,70471	6,70917	6,71364	6,71811	6,72257	6,72704	6,73151
2,260	6,73598	6,74045	6,74492	6,74940	6,75387	6,75835	6,76282	6,76730	6,77178	6,77626
2,270	6,78074	6,78522	6,78970	6,79418	6,79867	6,80315	6,80764	6,81213	6,81662	6,82110
2,280	6,82559	6,83009	6,83458	6,83907	6,84356	6,84806	6,85256	6,85705	6,86155	6,86605
2,290	6,87055	6,87505	6,87955	6,88405	6,88856	6,89306	6,89757	6,90208	6,90658	6,91109
2,300	6,91560	6,92011	6,92462	6,92914	6,93365	6,93816	6,94268	6,94720	6,95171	6,95623
2,310	6,96075	6,96527	6,96979	6,97432	6,97884	6,98336	6,98789	6,99242	6,99694	7,00147
2,320	7,00600	7,01053	7,01506	7,01959	7,02413	7,02866	7,03320	7,03773	7,04227	7,04681
2,330	7,05135	7,05589	7,06043	7,06497	7,06951	7,07406	7,07860	7,08315	7,08769	7,09224
2,340	7,09679	7,10134	7,10589	7,11044	7,11500	7,11955	7,12410	7,12866	7,13322	7,13777
2,350	7,14233	7,14689	7,15145	7,15601	7,16058	7,16514	7,16970	7,17427	7,17883	7,18340
2,360	7,18797	7,19254	7,19711	7,20168	7,20625	7,21082	7,21540	7,21997	7,22455	7,22913
2,370	7,23370	7,23828	7,24286	7,24744	7,25202	7,25661	7,26119	7,26578	7,27036	7,27495
2,380	7,27954	7,28412	7,28871	7,29330	7,29789	7,30249	7,30708	7,31167	7,31627	7,32087
2,390	7,32546	7,33006	7,33466	7,33926	7,34386	7,34846	7,35307	7,35767	7,36227	7,36688

**Table C.2 — Modular discharge over a triangular profile weir per metre of crest in terms of upstream head**  
(continued)

Head <i>H</i>  m	Modular discharge <i>q</i>  m <sup>3</sup> /s									
	Increments of head, <i>H</i> m									
	0,000	0,001	0,002	0,003	0,004	0,005	0,006	0,007	0,008	0,009
2,400	7,371 49	7,376 09	7,380 70	7,385 31	7,389 92	7,394 53	7,399 15	7,403 76	7,408 37	7,412 99
2,410	7,417 61	7,422 22	7,426 84	7,431 46	7,436 08	7,440 70	7,445 32	7,449 95	7,454 57	7,459 20
2,420	7,463 82	7,468 45	7,473 08	7,477 71	7,482 33	7,486 97	7,491 60	7,496 23	7,500 86	7,505 50
2,430	7,510 13	7,514 77	7,519 41	7,524 04	7,528 68	7,533 32	7,537 97	7,542 61	7,547 25	7,551 89
2,440	7,556 54	7,561 19	7,565 83	7,570 48	7,575 13	7,579 78	7,584 43	7,589 08	7,593 73	7,598 39
2,450	7,603 04	7,607 70	7,612 35	7,617 01	7,621 67	7,626 33	7,630 99	7,635 65	7,640 31	7,644 97
2,460	7,649 64	7,654 30	7,658 97	7,663 64	7,668 30	7,672 97	7,677 64	7,682 31	7,686 98	7,691 66
2,470	7,696 33	7,701 00	7,705 68	7,710 36	7,715 03	7,719 71	7,724 39	7,729 07	7,733 75	7,738 43
2,480	7,743 21	7,747 80	7,752 48	7,757 17	7,761 86	7,766 54	7,771 23	7,775 92	7,780 61	7,785 30
2,490	7,790 00	7,794 69	7,799 38	7,804 08	7,808 77	7,813 47	7,818 17	7,822 87	7,827 57	7,832 27
2,500	7,836 97	7,841 67	7,846 38	7,851 08	7,855 79	7,860 49	7,865 20	7,869 91	7,874 62	7,879 33
2,510	7,884 04	7,888 75	7,893 46	7,898 18	7,902 89	7,907 61	7,912 33	7,917 04	7,921 76	7,926 48
2,520	7,931 20	7,935 92	7,940 65	7,945 37	7,950 09	7,954 82	7,959 54	7,964 27	7,969 00	7,973 73
2,530	7,978 46	7,983 19	7,987 92	7,992 65	7,997 39	8,002 12	8,006 86	8,011 59	8,016 33	8,021 07
2,540	8,025 81	8,030 55	8,035 29	8,040 03	8,044 77	8,049 52	8,054 26	8,059 01	8,063 76	8,068 50
2,550	8,073 25	8,078 00	8,082 75	8,087 50	8,092 25	8,097 01	8,101 76	8,106 52	8,111 27	8,116 03
2,560	8,120 79	8,125 55	8,130 31	8,135 07	8,139 83	8,144 59	8,149 35	8,154 12	8,158 88	8,163 65
2,570	8,168 42	8,173 18	8,177 95	8,182 72	8,187 49	8,192 27	8,197 04	8,201 81	8,206 59	8,211 36
2,580	8,216 14	8,220 92	8,225 69	8,230 47	8,235 25	8,240 03	8,244 82	8,249 60	8,254 38	8,259 17
2,590	8,263 95	8,268 74	8,273 53	8,278 32	8,283 11	8,287 90	8,292 69	8,297 48	8,302 27	8,307 07
2,600	8,311 86	8,316 66	8,321 45	8,326 25	8,331 05	8,335 85	8,340 65	8,345 45	8,350 25	8,355 06
2,610	8,359 86	8,364 66	8,369 47	8,374 28	8,379 08	8,383 89	8,388 70	8,393 51	8,398 32	8,403 14
2,620	8,407 95	8,412 76	8,417 58	8,422 40	8,427 21	8,432 03	8,436 85	8,441 67	8,446 49	8,451 31
2,630	8,456 13	8,460 96	8,465 78	8,470 61	8,475 43	8,480 26	8,485 09	8,489 92	8,494 75	8,499 58
2,640	8,504 41	8,509 24	8,514 07	8,518 91	8,523 74	8,528 58	8,533 42	8,538 26	8,543 09	8,547 93
2,650	8,552 77	8,557 62	8,562 46	8,567 30	8,572 15	8,576 99	8,581 84	8,586 69	8,591 53	8,596 38
2,660	8,601 23	8,606 08	8,610 93	8,615 79	8,620 64	8,625 50	8,630 35	8,635 21	8,640 06	8,644 92
2,670	8,649 78	8,654 64	8,659 50	8,664 36	8,669 23	8,674 09	8,678 95	8,683 82	8,688 69	8,693 55
2,680	8,698 42	8,703 29	8,708 16	8,713 03	8,717 90	8,722 77	8,727 65	8,732 52	8,737 40	8,742 27
2,690	8,747 15	8,752 03	8,756 91	8,761 79	8,766 67	8,771 55	8,776 43	8,781 32	8,786 20	8,791 09

NOTE 1 Substituting total heads in this table will yield discharges. If gauged heads are used the value should be multiplied by the appropriate  $C_v$  (see Table C.1).

NOTE 2 To use Table C.2, evaluate the modular discharge (in m<sup>3</sup>/s) from this table, the appropriate value of the head (in m) is inserted as a combination of the values in the first column and in the first row (above the horizontal rule).

EXAMPLE The value of modular discharge corresponding to a head of 0,243 is given at the intersection formed by the horizontal line from 0,240 with the vertical line from 0,003, and the modular discharge is therefore = 0,23749

---

## **BSI — British Standards Institution**

BSI is the independent national body responsible for preparing British Standards. It presents the UK view on standards in Europe and at the international level. It is incorporated by Royal Charter.

### **Revisions**

British Standards are updated by amendment or revision. Users of British Standards should make sure that they possess the latest amendments or editions.

It is the constant aim of BSI to improve the quality of our products and services. We would be grateful if anyone finding an inaccuracy or ambiguity while using this British Standard would inform the Secretary of the technical committee responsible, the identity of which can be found on the inside front cover. Tel: 020 8996 9000. Fax: 020 8996 7400.

BSI offers members an individual updating service called PLUS which ensures that subscribers automatically receive the latest editions of standards.

### **Buying standards**

Orders for all BSI, international and foreign standards publications should be addressed to Customer Services. Tel: 020 8996 9001. Fax: 020 8996 7001.

In response to orders for international standards, it is BSI policy to supply the BSI implementation of those that have been published as British Standards, unless otherwise requested.

### **Information on standards**

BSI provides a wide range of information on national, European and international standards through its Library and its Technical Help to Exporters Service. Various BSI electronic information services are also available which give details on all its products and services. Contact the Information Centre. Tel: 020 8996 7111. Fax: 020 8996 7048.

Subscribing members of BSI are kept up to date with standards developments and receive substantial discounts on the purchase price of standards. For details of these and other benefits contact Membership Administration. Tel: 020 8996 7002. Fax: 020 8996 7001.

### **Copyright**

Copyright subsists in all BSI publications. BSI also holds the copyright, in the UK, of the publications of the international standardization bodies. Except as permitted under the Copyright, Designs and Patents Act 1988 no extract may be reproduced, stored in a retrieval system or transmitted in any form or by any means – electronic, photocopying, recording or otherwise – without prior written permission from BSI.

This does not preclude the free use, in the course of implementing the standard, of necessary details such as symbols, and size, type or grade designations. If these details are to be used for any other purpose than implementation then the prior written permission of BSI must be obtained.

If permission is granted, the terms may include royalty payments or a licensing agreement. Details and advice can be obtained from the Copyright Manager. Tel: 020 8996 7070.