

BS ISO 13948-2:2016



BSI Standards Publication

Diesel engines — Fuel injection pumps and fuel injector low-pressure connections

Part 2: Non-threaded (push-on) connections

National foreword

This British Standard is the UK implementation of ISO 13948-2:2016. It supersedes BS ISO 13948-2:2012 which is withdrawn.

The UK participation in its preparation was entrusted to Technical Committee MCE/22, Engines for road vehicles.

A list of organizations represented on this committee can be obtained on request to its secretary.

This publication does not purport to include all the necessary provisions of a contract. Users are responsible for its correct application.

© The British Standards Institution 2016.
Published by BSI Standards Limited 2016

ISBN 978 0 580 91400 3

ICS 43.060.40

Compliance with a British Standard cannot confer immunity from legal obligations.

This British Standard was published under the authority of the Standards Policy and Strategy Committee on 31 December 2016.

Amendments/corrigenda issued since publication

Date	Text affected
------	---------------

INTERNATIONAL
STANDARD

ISO
13948-2

Third edition
2016-12-15

**Diesel engines — Fuel injection
pumps and fuel injector low-pressure
connections —**

Part 2:
Non-threaded (push-on) connections

*Moteurs diesels — Raccords basse pression pour pompes d'injection
de combustible et porte-injecteurs de combustible complets —*

Partie 2: Raccords non filetés (à pression)



Reference number
ISO 13948-2:2016(E)

© ISO 2016



COPYRIGHT PROTECTED DOCUMENT

© ISO 2016, Published in Switzerland

All rights reserved. Unless otherwise specified, no part of this publication may be reproduced or utilized otherwise in any form or by any means, electronic or mechanical, including photocopying, or posting on the internet or an intranet, without prior written permission. Permission can be requested from either ISO at the address below or ISO's member body in the country of the requester.

ISO copyright office
Ch. de Blandonnet 8 • CP 401
CH-1214 Vernier, Geneva, Switzerland
Tel. +41 22 749 01 11
Fax +41 22 749 09 47
copyright@iso.org
www.iso.org

Contents

Page

Foreword	iv
Introduction	v
1 Scope	1
2 Normative references	1
3 Terms and definitions	1
4 Connection designs and applications	1
4.1 Type A: nipple connection.....	1
4.2 Type B: stand pipe connection.....	2
4.3 Type C: “quick connector coupling” connection.....	2
5 Dimensions and surface quality	3
5.1 Type A connection ends.....	3
5.1.1 Nipple types.....	3
5.1.2 Basic dimensions and tolerances.....	5
5.1.3 Radii.....	6
5.1.4 Surface quality.....	6
5.2 Type B connection end.....	7
5.3 Type C connection end.....	8
6 Designation	11
Bibliography	12

Foreword

ISO (the International Organization for Standardization) is a worldwide federation of national standards bodies (ISO member bodies). The work of preparing International Standards is normally carried out through ISO technical committees. Each member body interested in a subject for which a technical committee has been established has the right to be represented on that committee. International organizations, governmental and non-governmental, in liaison with ISO, also take part in the work. ISO collaborates closely with the International Electrotechnical Commission (IEC) on all matters of electrotechnical standardization.

The procedures used to develop this document and those intended for its further maintenance are described in the ISO/IEC Directives, Part 1. In particular the different approval criteria needed for the different types of ISO documents should be noted. This document was drafted in accordance with the editorial rules of the ISO/IEC Directives, Part 2 (see www.iso.org/directives).

Attention is drawn to the possibility that some of the elements of this document may be the subject of patent rights. ISO shall not be held responsible for identifying any or all such patent rights. Details of any patent rights identified during the development of the document will be in the Introduction and/or on the ISO list of patent declarations received (see www.iso.org/patents).

Any trade name used in this document is information given for the convenience of users and does not constitute an endorsement.

For an explanation on the meaning of ISO specific terms and expressions related to conformity assessment, as well as information about ISO's adherence to the World Trade Organization (WTO) principles in the Technical Barriers to Trade (TBT) see the following URL: www.iso.org/iso/foreword.html.

The committee responsible for this document is ISO/TC 22, *Road vehicles*, Subcommittee SC 34, *Propulsion, powertrain and powertrain fluids*.

This third edition cancels and replaces the second edition (ISO 13948-2:2012), which has been technically revised with the following changes:

— a normative reference has been made to ISO 4288 for the measurement of surface texture.

A list of all the parts in the ISO 13948 series can be found on the ISO website.

Introduction

It is recognized that a large variety of low-pressure connections exist on fuel injection equipment, using different sealing principles, as well as designs. This document attempts to provide the user with a common set of preferred types.

This document is divided into two parts, covering threaded connections (ISO 13948-1) and non-threaded (push-on) connections (ISO 13948-2) for use with low-pressure fuel supply and return, boost air pressure and lubricating oil supply and return.

Diesel engines — Fuel injection pumps and fuel injector low-pressure connections —

Part 2: Non-threaded (push-on) connections

1 Scope

This document specifies requirements for the connection ends of push-on connections used with fuel injection equipment.

Three types of push-on connections (types A, B and C) are described in this document.

NOTE Low-pressure connections to fuel filters are covered in other International Standards; see the bibliography. High-pressure end-connections for pumps and injectors are covered in ISO 2974 and ISO 13296.

2 Normative references

The following documents are referred to in the text in such a way that some or all of their content constitutes requirements of this document. For dated references, only the edition cited applies. For undated references, the latest edition of the referenced document (including any amendments) applies.

ISO 4288, *Geometrical Product Specifications (GPS) — Surface texture: Profile method — Rules and procedures for the assessment of surface texture*.

3 Terms and definitions

For the purposes of this document, the terms and definitions given in ISO 7876 (all parts) apply.

ISO and IEC maintain terminological databases for use in standardization at the following addresses:

- IEC Electropedia: available at <http://www.electropedia.org/>
- ISO Online browsing platform: available at <http://www.iso.org/obp>

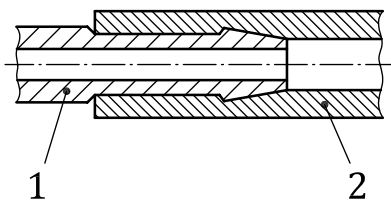
4 Connection designs and applications

4.1 Type A: nipple connection

EXAMPLE See [Figure 1](#).

This design is intended for use directly with the mating hose (2) or in conjunction with a retaining clip around the hose (not shown) for a more secure connection.

The nipple (1) can be machined (see [Figure 4](#)), formed (see [Figure 5](#) and [Figure 6](#)) or moulded (see [Figure 7](#)).



Key

- 1 nipple
- 2 hose

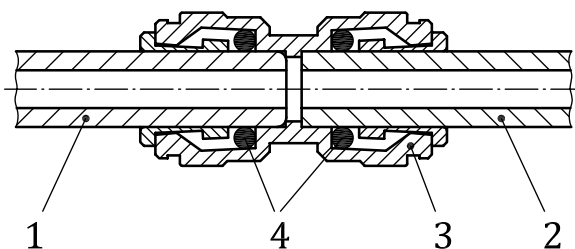
Figure 1 — Type A connection (principle)

4.2 Type B: stand pipe connection

EXAMPLE See [Figure 2](#).

This design is used in conjunction with proprietary push-on connections (3) attached to the mating hose (2) that seals by compressing ring seals (4) around the outside diameters of the stand pipe (1) and of the mating hose (2).

An identification may be applied to indicate to the user that the hose is fully engaged (see [Figure 10](#)).



Key

- 1 stand pipe
- 2 hose
- 3 push-on connection
- 4 ring seals

Figure 2 — Type B connection (principle)

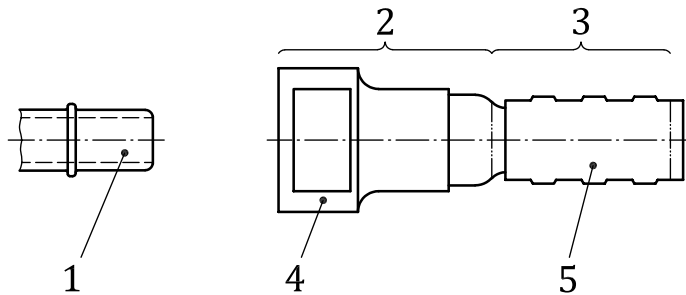
4.3 Type C: “quick connector coupling” connection

NOTE As specified in SAE J2044[9].

EXAMPLE See [Figure 3](#).

This design is used in conjunction with proprietary push-on “quick connector couplings” attached to the mating male tube end form. The quick connector coupling contains one or more O-ring seals to seal along the male tube end outer surface, and a latching device to engage with the collar diameter feature.

The male tube end form is shown in [Figure 11](#) and the dimensions are defined in [Table 4](#) and [Table 5](#).



Key

- 1 male tube end
- 2 female connection end
- 3 stem
- 4 quick connector coupling
- 5 section of hose or tube

Figure 3 — Type C connection (principle)

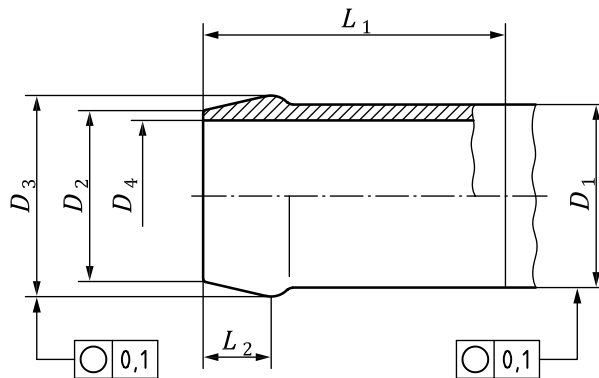
5 Dimensions and surface quality

5.1 Type A connection ends

5.1.1 Nipple types

5.1.1.1 Nipple, machined, type A.1

Dimensions in millimetres



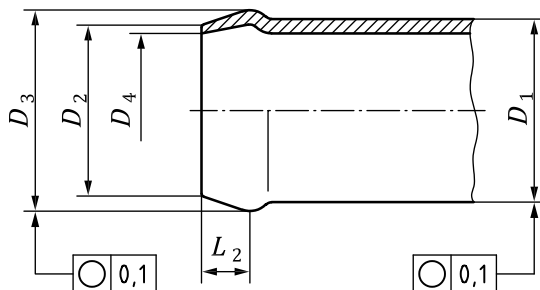
NOTE For the parameters, see [Table 1](#).

Figure 4 — Nipple, type A.1

5.1.1.2 Nipple, formed, types A.2

5.1.1.2.1 Nipple, bulge type A.2.1

Dimensions in millimetres

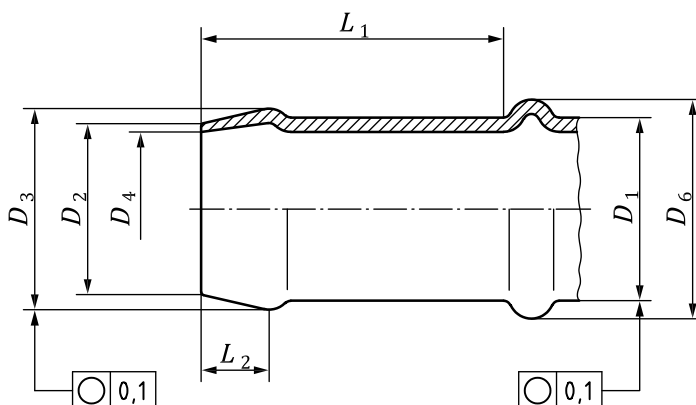


NOTE For the parameters, see [Table 1](#).

Figure 5 — Nipple, type A.2.1

5.1.1.2.2 Nipple, bulge and spool type, A.2.2

Dimensions in millimetres



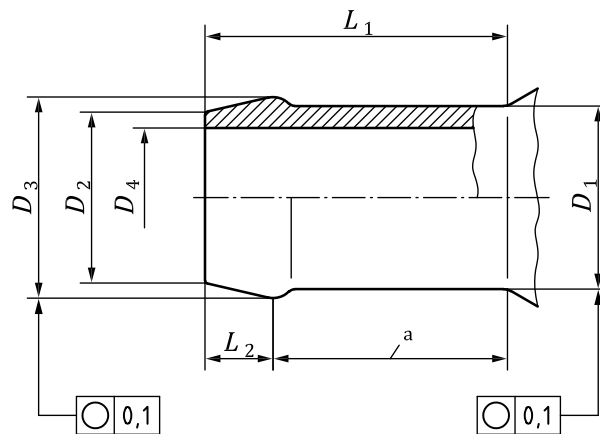
NOTE For the parameters, see [Table 1](#).

Figure 6 — Nipple, type A.2.2

5.1.1.3 Nipple, moulded, type A.3

See [Figure 7](#).

Dimensions in millimetres



a Within this area:

- moulded joint misalignment: 0,05 mm max.;
- moulded joint parting height: 0,05 mm max.

NOTE For the parameters, see [Table 1](#).

Figure 7 — Nipple, type A.3

5.1.2 Basic dimensions and tolerances

See [Table 1](#).

Table 1 — Basic dimensions and tolerances for nipples, types A

Dimensions in millimetres

Type	L_1 nom.	L_2	D_1	D_2	D_3	D_4 max.	D_5 min.
A.1 (machined)	20 to 24	$3,2 \pm 0,5$	$\emptyset 12,1 \pm 0,1$	$\emptyset 11,3 \pm 0,2$	$\emptyset 13,3 \pm 0,1$	$\emptyset 10$	—
		$3,2 \pm 0,5$	$\emptyset 10,1 \pm 0,1$	$\emptyset 9,3 \pm 0,2$	$\emptyset 11,1 \pm 0,1$	$\emptyset 8$	—
		$3,2 \pm 0,5$	$\emptyset 8,1 \pm 0,1$	$\emptyset 7,3 \pm 0,2$	$\emptyset 9,1 \pm 0,1$	$\emptyset 6$	—
	16	$2,8 \pm 0,5$	$\emptyset 6,35 \pm 0,1$	$\emptyset 6,2 \pm 0,2$	$\emptyset 7,4 \pm 0,1$	— ^a	—
	12	$2,2 \pm 0,5$	$\emptyset 4,0 \pm 0,1$	$\emptyset 3,8 \pm 0,2$	$\emptyset 5 \pm 0,1$	$\emptyset 2,6$	—
A.2.1 (formed) bulge type	—	$3,2 \pm 0,5$	$\emptyset 12,1 \pm 0,1$	$\emptyset 11,3 \pm 0,2$	$\emptyset 13,3 \pm 0,3$	$\emptyset 10,2$	—
		$3,2 \pm 0,5$	$\emptyset 10,1 \pm 0,1$	$\emptyset 9,3 \pm 0,2$	$\emptyset 11,1 \pm 0,3$	$\emptyset 8,2$	—
		$3,2 \pm 0,5$	$\emptyset 8,1 \pm 0,1$	$\emptyset 7,3 \pm 0,2$	$\emptyset 9,1 \pm 0,3$	$\emptyset 6,2$	—
		$2,8 \pm 0,5$	$\emptyset 6,35 \pm 0,1$	$\emptyset 6,1 \pm 0,2$	$\emptyset 7,4 \pm 0,3$	$\emptyset 5$	—
		$2,2 \pm 0,5$	$\emptyset 4,76 \pm 0,1$	$\emptyset 4,6 \pm 0,2$	$\emptyset 5,6 \pm 0,3$	$\emptyset 3,5$	—
A.2.2 (formed) bulge and spool type	20 to 24	$3,2 \pm 0,5$	$\emptyset 12,1 \pm 0,1$	$\emptyset 11,3 \pm 0,2$	$\emptyset 13,3 \pm 0,3$	$\emptyset 10,2$	$\emptyset 13,2$
		$3,2 \pm 0,5$	$\emptyset 10,1 \pm 0,1$	$\emptyset 9,3 \pm 0,2$	$\emptyset 11,1 \pm 0,3$	$\emptyset 8,2$	$\emptyset 11,2$
		$3,2 \pm 0,5$	$\emptyset 8,1 \pm 0,1$	$\emptyset 7,3 \pm 0,2$	$\emptyset 9,1 \pm 0,3$	$\emptyset 6,2$	$\emptyset 9$
	28	$2,8 \pm 0,5$	$\emptyset 6,35 \pm 0,1$	$\emptyset 6,1 \pm 0,2$	$\emptyset 7,4 \pm 0,3$	$\emptyset 5$	$\emptyset 7,1$
	28	$2,2 \pm 0,5$	$\emptyset 4,76 \pm 0,1$	$\emptyset 4,6 \pm 0,2$	$\emptyset 5,6 \pm 0,3$	$\emptyset 3,5$	$\emptyset 5,3$

Table 1 (continued)

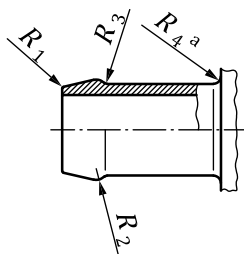
Type	L_1 nom.	L_2	D_1	D_2	D_3	D_4 max.	D_5 min.
A.3 (moulded)	20 to 24	$3,2 \pm 0,5$	$\emptyset 12,1 \pm 0,1$	$\emptyset 11,3 \pm 0,2$	$\emptyset 13,3 \pm 0,1$	$\emptyset 9,2$	—
		$3,2 \pm 0,5$	$\emptyset 10,1 \pm 0,1$	$\emptyset 9,3 \pm 0,2$	$\emptyset 11,1 \pm 0,1$	$\emptyset 7,2$	—
		$3,2 \pm 0,5$	$\emptyset 8,1 \pm 0,1$	$\emptyset 7,3 \pm 0,2$	$\emptyset 9,1 \pm 0,1$	$\emptyset 5,2$	—
	16	$2,8 \pm 0,5$	$\emptyset 6,35 \pm 0,1$	$\emptyset 6,2 \pm 0,2$	$\emptyset 7,4 \pm 0,1$	— ^a	—
	12	$2,2 \pm 0,5$	$\emptyset 4,0 \pm 0,1$	$\emptyset 3,8 \pm 0,2$	$\emptyset 5 \pm 0,1$	$\emptyset 2,6$	—

^a Bore size specified by manufacturer.

5.1.3 Radii

Dimensions of the nipple radii are given in [Table 2](#).

Positions of the nipple radii are shown in [Figure 8](#).



^a Only for moulded nipples.

NOTE For the parameters, see [Table 2](#).

Figure 8 — Nipple radii

Table 2 — Dimensions of radii for nipples, types A

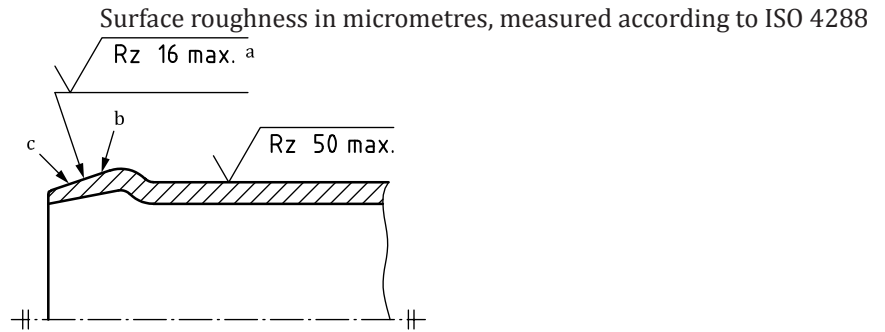
Dimensions in millimetres

Nipple type	R_1 min.	R_2 nom.	R_3 nom.	R_4^a min.
Machined	0,2	1 to 1,5	0,5 to 1	—
Formed	0,2	1 to 1,5	0,5 to 1	—
Moulded	0,2	1 to 1,5	—	1

^a Only for moulded nipples.

5.1.4 Surface quality

The outside surface quality requirements (roughness and imperfections) are given in [Figure 9](#).

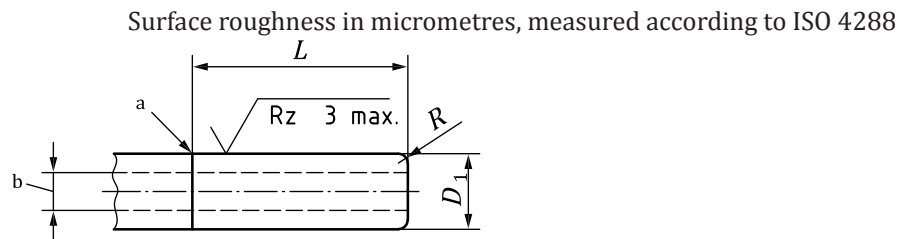


- a Measured lengthwise and crosswise.
- b No longitudinal marks are permitted.
- c Single imperfections with a depth up to 0,05 mm and a length up to 0,5 mm are permitted.

Figure 9 — Outside surface quality requirements

5.2 Type B connection end

See [Figure 10](#).



- a Identification (optional).
- b Bore size specified by manufacturer.

NOTE 1 Materials can be different, for example plastics.

NOTE 2 For the parameters, see [Table 3](#).

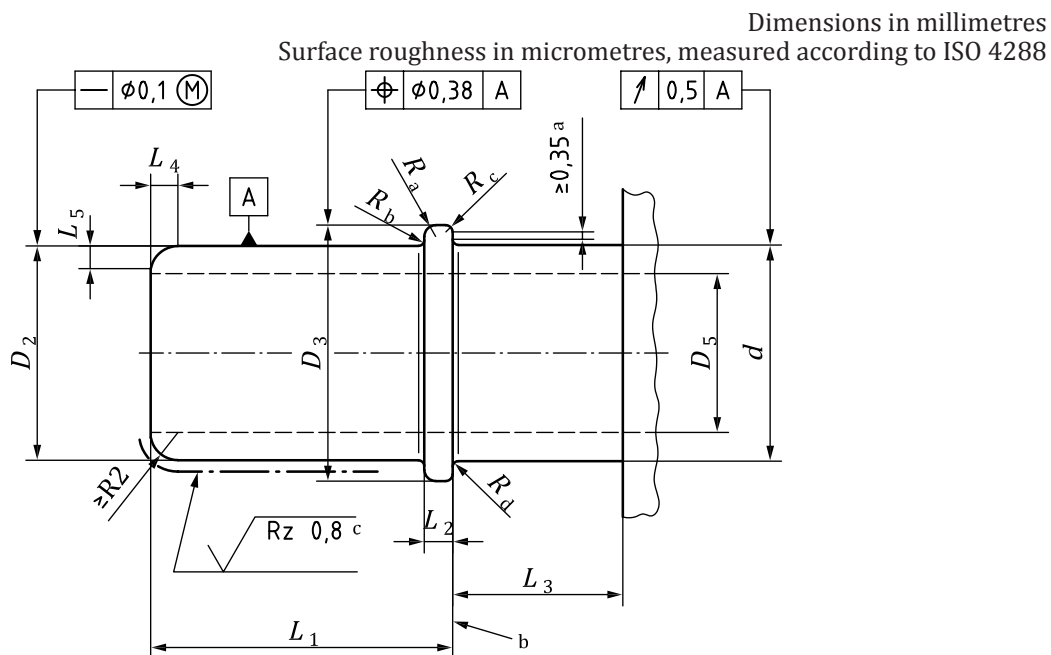
Figure 10 — Stand pipe, type B

Table 3 — Dimensions and tolerances for type B

Dimensions in millimetres

D_1	L	R
$\varnothing 8 \pm 0,05$	$28,5 \pm 0,5$	$1,2^{+0,5}_{-0,3}$
$\varnothing 10 \pm 0,05$	$28,5 \pm 0,5$	$1,2^{+0,5}_{-0,3}$

5.3 Type C connection end



Key

- d* nominal diameter
- D*₂ seal diameter
- D*₃ collar diameter
- D*₅ minimum inner diameter
- L*₁ length
- L*₂ collar width
- L*₃ clearance
- a Minimum 0,35 annular surface perpendicular to tube.
- b Collar to start of bend: see connector drawings for minimum distance.
- c Measure across lay, tool marks or weld seams. No flows to exceed 30 μm *Rz*.

NOTE For the parameters, see [Table 4](#) and [Table 5](#).

Figure 11 — Male tube end form, type C

Table 4 — Dimensions and tolerances for type C (except for polyamide-coated end forms)

Dimensions in millimetres

<i>D</i> inch	<i>D</i> ₁ ^a nom.	<i>D</i> ₂	<i>D</i> ₃	<i>D</i> ₅ min.	<i>L</i> ₁	<i>L</i> ₂	<i>L</i> ₃ min.	<i>R</i> _a min.	<i>R</i> _b max.	<i>R</i> _c max.	<i>R</i> _d max.	<i>L</i> ₄	<i>L</i> ₅ min.
3/16	4,78	4,63 ± 0,06	7,1 ± 0,15	2,2	19,93 ± 0,25	1,75 ± 0,15	8	0,8	0,3	0,5	0,25	2 ± 0,20	0,8
1/4	6,35	6,3 ± 0,06	8,75 ± 0,15	3,6	21,25 ± 0,25	1,6 ± 0,15	7	0,8	0,3	0,5	0,25	2 ± 0,20	0,9
5/16	8	7,89 ± 0,06	10,98 ± 0,15	4,7	21,45 ± 0,25	1,6 ± 0,15	6	1	0,4	0,45	0,35	2,1 ± 0,20	0,9
	8	8 ± 0,08	11 ± 0,15	5	21 ± 0,25	1,75 ± 0,15	6	1	0,35	0,6	0,35	2,1 ± 0,20	0,9
3/8	9,5	9,49 ± 0,06	12,94 ± 0,15	6,3	21,85 ± 0,25	1,6 ± 0,15	6,5	1	0,6	0,45	0,5	2,1 ± 0,20	1,1
7/16	10	9,89 ± 0,06	13,42 ± 0,2	6,6	24,95 ± 0,25	1,75 ± 0,20	6	1	0,6	0,5	0,6	2,1 ± 0,20	1,1
	10	10 ± 0,08	13,5 ± 0,2	6,4	24 ± 0,25	1,75 ± 0,20	6	1	0,6	0,5	0,6	2,1 ± 0,20	1,1
	12	11,8 ± 0,08	16,5 ± 0,25	7,5	26,62 ± 0,25	2,5 ± 0,20	8	1	1	0,6	0,6	2,2 ± 0,20	1,5
1/2	12,7	12,61 ± 0,1	16,51 ± 0,25	8,1	26,62 ± 0,25	2,5 ± 0,20	8	1	0,8	0,6	0,6	2,2 ± 0,20	1,5
5/8	16	15,82 ± 0,1	19,18 ± 0,25	11,1	26,62 ± 0,25	2,5 ± 0,20	8	1	0,5	0,6	0,5	2,2 ± 0,20	1,75
3/4	19	18,9 ± 0,1	22,33 ± 0,25	13,2	26,62 ± 0,25	2,5 ± 0,20	8	1	0,5	0,6	0,5	2,2 ± 0,20	1,75
57/64	23	22,7 ± 0,15	25,7 ± 0,25	16	29,5 ± 0,25	2,5 ± 0,20	9,5	1	0,3	0,6	0,3	2,2 ± 0,20	1,75
1	25,4	25,5 ± 0,15	28,2 ± 0,25	19	29,5 ± 0,25	2,5 ± 0,20	9,5	1	0,15	0,6	0,2	2,2 ± 0,20	1,75

^a Tube diameter (nominal coupling size); not shown in Figure 11.

Table 5 — Dimensions and tolerances for type C (polyamide-coated end forms)

<i>D</i> inch	<i>D</i> ₁ ^a nom.	<i>D</i> ₂	<i>D</i> ₃	<i>D</i> ₅ min.	<i>L</i> ₁	<i>L</i> ₂	<i>L</i> ₃ min.	<i>R</i> _a min.	<i>R</i> _b max.	<i>R</i> _c max.	<i>R</i> _d max.	<i>L</i> ₄	<i>L</i> ₅ min.
1/4	6,35	6,3 ± 0,06	8,75 ± 0,15	3,6	21,25 ± 0,25	2,0 ± 0,20	7	0,8	0,3	0,5	0,25	2 ± 0,20	0,9
5/16	8	7,89 ± 0,06	10,98 ± 0,15	4,7	21,45 ± 0,25	2,0 ± 0,20	6	1	0,4	0,45	0,35	2,1 ± 0,20	0,9
3/8	9,5	9,49 ± 0,06	12,94 ± 0,15	6,3	21,85 ± 0,25	2,0 ± 0,20	6,5	1	0,6	0,45	0,5	2,1 ± 0,20	1,1
7/16	10	9,89 ± 0,06	13,42 ± 0,2	6,6	24,95 ± 0,25	2,0 ± 0,25	6	1	0,6	0,5	0,6	2,1 ± 0,20	1,1

^a Tube diameter (nominal coupling size); not shown in [Figure 11](#).

6 Designation

Low-pressure connections in accordance with this document shall be designated by the following elements:

- a) a reference to this document, i.e. ISO 13948-2:2012;
- b) the type of connection in accordance with [Figure 4](#), [Figure 5](#), [Figure 6](#), [Figure 7](#), [Figure 10](#) or [Figure 11](#);
- c) the diameter, D_1 , of the type of connection in accordance with [Table 1](#), [Table 3](#), [Table 4](#) or [Table 5](#).

EXAMPLE 1 A low-pressure fuel connection of type A.2.1 (nipple, formed) with a diameter $D_1 = 10,1$ mm is designated as follows:

ISO 13948-2 - A.2.1 10,1

EXAMPLE 2 A low-pressure fuel connection of type B with a diameter $D_1 = 8$ mm is designated as follows:

ISO 13948-2 - B - 8

EXAMPLE 3 A low-pressure fuel connection of type C with a diameter $D_1 = 12,7$ mm is designated as follows:

ISO 13948-2 - C - 12,7

Bibliography

- [1] ISO 2974, *Diesel engines — 60° female cones for high-pressure fuel injection components*
- [2] ISO 7310, *Diesel engines — Heads for spin-on fuel filters with horizontal flange — Mounting and connecting dimensions*
- [3] ISO 7311, *Diesel engines — Heads for fuel filters with vertical flange — Mounting and connecting dimensions*
- [4] ISO 7576,¹⁾ *Road vehicles — Two-stage fuel filters for compression-ignition engines — Mounting and connecting dimensions*
- [5] ISO 7654, *Road vehicles — Spin-on fuel filters for diesel engines — Mounting and connecting dimensions*
- [6] ISO 7876 (all parts), *Fuel injection equipment — Vocabulary*
- [7] ISO 13296, *Diesel engines — High-pressure fuel injection pipe assemblies for integral 60° female cones — General requirements and dimensions*
- [8] ISO 13948-1, *Diesel engines — Fuel injection pumps and fuel injector low-pressure connections — Part 1: Threaded connections*
- [9] SAE J2044, *Quick Connect Coupling Specification for Liquid Fuel and Vapor/Emissions Systems*

1) Withdrawn.

British Standards Institution (BSI)

BSI is the national body responsible for preparing British Standards and other standards-related publications, information and services.

BSI is incorporated by Royal Charter. British Standards and other standardization products are published by BSI Standards Limited.

About us

We bring together business, industry, government, consumers, innovators and others to shape their combined experience and expertise into standards-based solutions.

The knowledge embodied in our standards has been carefully assembled in a dependable format and refined through our open consultation process. Organizations of all sizes and across all sectors choose standards to help them achieve their goals.

Information on standards

We can provide you with the knowledge that your organization needs to succeed. Find out more about British Standards by visiting our website at bsigroup.com/standards or contacting our Customer Services team or Knowledge Centre.

Buying standards

You can buy and download PDF versions of BSI publications, including British and adopted European and international standards, through our website at bsigroup.com/shop, where hard copies can also be purchased.

If you need international and foreign standards from other Standards Development Organizations, hard copies can be ordered from our Customer Services team.

Copyright in BSI publications

All the content in BSI publications, including British Standards, is the property of and copyrighted by BSI or some person or entity that owns copyright in the information used (such as the international standardization bodies) and has formally licensed such information to BSI for commercial publication and use.

Save for the provisions below, you may not transfer, share or disseminate any portion of the standard to any other person. You may not adapt, distribute, commercially exploit, or publicly display the standard or any portion thereof in any manner whatsoever without BSI's prior written consent.

Storing and using standards

Standards purchased in soft copy format:

- A British Standard purchased in soft copy format is licensed to a sole named user for personal or internal company use only.
- The standard may be stored on more than 1 device provided that it is accessible by the sole named user only and that only 1 copy is accessed at any one time.
- A single paper copy may be printed for personal or internal company use only.

Standards purchased in hard copy format:

- A British Standard purchased in hard copy format is for personal or internal company use only.
- It may not be further reproduced – in any format – to create an additional copy. This includes scanning of the document.

If you need more than 1 copy of the document, or if you wish to share the document on an internal network, you can save money by choosing a subscription product (see 'Subscriptions').

Reproducing extracts

For permission to reproduce content from BSI publications contact the BSI Copyright & Licensing team.

Subscriptions

Our range of subscription services are designed to make using standards easier for you. For further information on our subscription products go to bsigroup.com/subscriptions.

With **British Standards Online (BSOL)** you'll have instant access to over 55,000 British and adopted European and international standards from your desktop. It's available 24/7 and is refreshed daily so you'll always be up to date.

You can keep in touch with standards developments and receive substantial discounts on the purchase price of standards, both in single copy and subscription format, by becoming a **BSI Subscribing Member**.

PLUS is an updating service exclusive to BSI Subscribing Members. You will automatically receive the latest hard copy of your standards when they're revised or replaced.

To find out more about becoming a BSI Subscribing Member and the benefits of membership, please visit bsigroup.com/shop.

With a **Multi-User Network Licence (MUNL)** you are able to host standards publications on your intranet. Licences can cover as few or as many users as you wish. With updates supplied as soon as they're available, you can be sure your documentation is current. For further information, email subscriptions@bsigroup.com.

Revisions

Our British Standards and other publications are updated by amendment or revision.

We continually improve the quality of our products and services to benefit your business. If you find an inaccuracy or ambiguity within a British Standard or other BSI publication please inform the Knowledge Centre.

Useful Contacts

Customer Services

Tel: +44 345 086 9001

Email (orders): orders@bsigroup.com

Email (enquiries): cservices@bsigroup.com

Subscriptions

Tel: +44 345 086 9001

Email: subscriptions@bsigroup.com

Knowledge Centre

Tel: +44 20 8996 7004

Email: knowledgecentre@bsigroup.com

Copyright & Licensing

Tel: +44 20 8996 7070

Email: copyright@bsigroup.com

BSI Group Headquarters

389 Chiswick High Road London W4 4AL UK