

BS ISO 13826:2013



BSI Standards Publication

# **Metallic and other inorganic coatings — Determination of thermal diffusivity of thermally sprayed ceramic coatings by laser flash method**

**bsi.**

...making excellence a habit.™

**National foreword**

This British Standard is the UK implementation of ISO 13826:2013.

The UK participation in its preparation was entrusted to Technical Committee STI/40, Thermal spraying and thermally sprayed coatings.

A list of organizations represented on this committee can be obtained on request to its secretary.

This publication does not purport to include all the necessary provisions of a contract. Users are responsible for its correct application.

© The British Standards Institution 2013.  
Published by BSI Standards Limited 2013

ISBN 978 0 580 68915 4

ICS 25.220.20

**Compliance with a British Standard cannot confer immunity from legal obligations.**

This British Standard was published under the authority of the Standards Policy and Strategy Committee on 31 January 2013.

**Amendments issued since publication**

Date	Text affected
------	---------------

---

First edition  
2013-01-15

---

---

**Metallic and other inorganic  
coatings — Determination of thermal  
diffusivity of thermally sprayed  
ceramic coatings by laser flash method**

*Revêtements métalliques et autres revêtements inorganiques —  
Détermination de la diffusivité thermique des revêtements céramiques  
obtenus par projection thermique par la méthode flash laser*



Reference number  
ISO 13826:2013(E)

© ISO 2013



**COPYRIGHT PROTECTED DOCUMENT**

© ISO 2013

All rights reserved. Unless otherwise specified, no part of this publication may be reproduced or utilized in any form or by any means, electronic or mechanical, including photocopying and microfilm, without permission in writing from either ISO at the address below or ISO's member body in the country of the requester.

ISO copyright office  
Case postale 56 • CH-1211 Geneva 20  
Tel. + 41 22 749 01 11  
Fax + 41 22 749 09 47  
E-mail [copyright@iso.org](mailto:copyright@iso.org)  
Web [www.iso.org](http://www.iso.org)

Published in Switzerland

# Contents

	Page
<b>Foreword</b> .....	<b>iv</b>
<b>Introduction</b> .....	<b>v</b>
<b>1 Scope</b> .....	<b>1</b>
<b>2 Terms and definitions</b> .....	<b>1</b>
<b>3 Principle of test method</b> .....	<b>1</b>
<b>4 Test method</b> .....	<b>2</b>
4.1 General.....	2
4.2 Apparatus.....	2
<b>5 Test specimen (disc)</b> .....	<b>3</b>
<b>6 Procedures</b> .....	<b>3</b>
<b>7 Calculation of thermal diffusivity</b> .....	<b>4</b>
<b>8 Test report</b> .....	<b>4</b>
<b>Annex A (informative) Calculations of thermal diffusivity after appropriate corrections</b> .....	<b>6</b>
<b>Bibliography</b> .....	<b>11</b>

## Foreword

ISO (the International Organization for Standardization) is a worldwide federation of national standards bodies (ISO member bodies). The work of preparing International Standards is normally carried out through ISO technical committees. Each member body interested in a subject for which a technical committee has been established has the right to be represented on that committee. International organizations, governmental and non-governmental, in liaison with ISO, also take part in the work. ISO collaborates closely with the International Electrotechnical Commission (IEC) on all matters of electrotechnical standardization.

International Standards are drafted in accordance with the rules given in the ISO/IEC Directives, Part 2.

The main task of technical committees is to prepare International Standards. Draft International Standards adopted by the technical committees are circulated to the member bodies for voting. Publication as an International Standard requires approval by at least 75 % of the member bodies casting a vote.

Attention is drawn to the possibility that some of the elements of this document may be the subject of patent rights. ISO shall not be held responsible for identifying any or all such patent rights.

ISO 13826 was prepared by Technical Committee ISO/TC 107, *Metallic and other inorganic coatings*.

## Introduction

Thermally sprayed ceramic coatings provide protection against high-temperature corrosion, erosion and wear; they can also change the appearance, electrical or tribological properties of the surface, replace worn material, etc. Thermal barrier coatings (TBCs) are typical examples of such ceramic coatings.

Thermal diffusivity data of thermally sprayed ceramic coatings are measured by the laser flash method. The data are used to calculate thermal conductivity when provided with density and specific heat capacity data.

Thermal diffusivity and thermal conductivity are significant properties of such thermally sprayed coatings when designing for thermal insulation, thermal isolation, efficient heat transfer and cooling systems. It is used by designers to calculate appropriate thickness needed to protect the metallic components and thus to determine the maximum temperature to which super-alloys with the thermally sprayed ceramic coatings could be exposed.

This International Standard gives guidelines for the determination of thermal diffusivity of thermally sprayed ceramic coatings by the laser flash method.





# Metallic and other inorganic coatings — Determination of thermal diffusivity of thermally sprayed ceramic coatings by laser flash method

## 1 Scope

This International Standard specifies a test method of thermal diffusivity of thermally sprayed ceramic coatings using laser technology.

This test method is applicable to self-standing thermally sprayed ceramic coatings of thickness between 0,8 mm to 2 mm, deposited by various thermal spray processes and removed from the substrate. Thermal diffusivity values ranging from  $10^{-7}$  m<sup>2</sup>/s to  $10^{-4}$  m<sup>2</sup>/s are measurable by this test method for temperature range from 300 K to 1500 K.

## 2 Terms and definitions

For the purposes of this document, the following terms and definitions apply.

### 2.1

#### thermal diffusivity

$\alpha$

ratio of thermal conductivity to specific heat capacity per unit mass, which describes the rate at which heat flows through a material, expressed in m<sup>2</sup>/s

### 2.2

#### half-rise time

$t_{1/2}$

time needed for the rear surface temperature to reach one-half of its maximum value or half-rise time, expressed in s

## 3 Principle of test method

The laser flash method is based on the measurement of the temperature profile of the rear surface of the sample when a pulsed laser illuminates the front surface, thus avoiding interference between the sensor, recording the temperature rise on the rear surface, and heat source.

Thermal diffusivity shall be measured by applying a high-intensity short-duration heat pulse to one face of a parallel-sided homogeneous test part, monitoring the temperature rise at the opposite face as a function of time, and determining the transient half-rise time ( $t_{1/2}$ ).<sup>[1]</sup>

Thermal diffusivity is calculated as

$$\alpha = \omega \left( \frac{L^2}{t_{1/2}} \right) \quad (1)$$

where

$\omega$  is the thermal diffusivity correction factor;

$L$  is the thickness of the specimen, m;

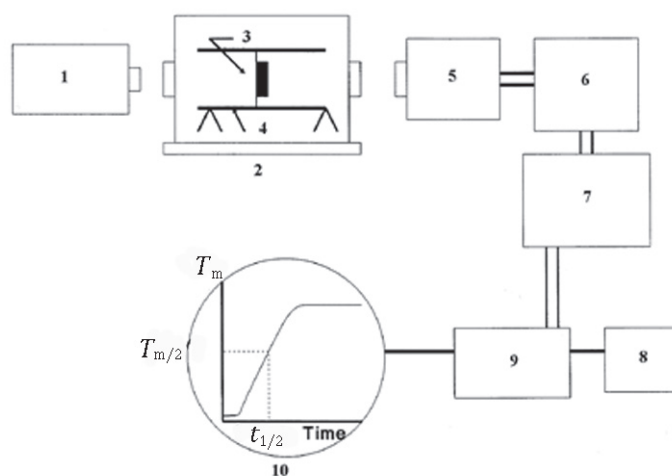
## 4 Test method

### 4.1 General

The laser flash method determines the thermal diffusivity for coatings on known substrates using small disc-shaped specimens. Covering an application range from 300 K to 1500 K, it fulfils the needs of thermal classification for almost any material and system problem, including ceramic thermal barrier coatings. The laser flash method is currently the most widely accepted method for precise measurement of the thermal diffusivity.[2]

### 4.2 Apparatus

The essential features of a laser flash diffusivity unit are shown in [Figure 1](#).



#### Key

- 1 Laser
- 2 Vacuum or inert atmosphere
- 3 Sample
- 4 Heater
- 5 Detector
- 6 AD-converter and amplifier
- 7 Digital Data Acquisition System
- 8 Printer
- 9 PC
- 10 Visual Display

**Figure 1 — Schematic diagram of laser flash diffusivity unit**

The window is of any transparent material and the specimen holder is ceramic or any other material with lower thermal conductivity than the sample.

#### 4.2.1 Flash source

It is essential for the laser source to be uniform over the entire surface of the specimen. For this reason, Neodymium (Nd) glass laser as a flash source is preferred. The pulse width, FWHM (full width at half maximum), should be shorter than 1,0 ms.

#### 4.2.2 Heater

The heater shall be of adequate dimension to heat and fix within the temperature range. It shall be capable of having a suitable temperature control facility prior to and during a test to be less than 4 % of the maximum temperature rise.

#### 4.2.3 Environmental control cabinet

The cabinet, capable of measuring below and above room temperature, may be a vacuum chamber or contain inert gas for operation in a protective atmosphere and is fitted with a window, which is transparent to the flash source. A second window for detection of the rear surface temperature rise shall be transparent. The optical detector shall be shielded from direct exposure to the energy beam with appropriate filters.

#### 4.2.4 Detector and signal conditioning

For the measurement of thermal diffusivity, a non-contact infrared type sensor is preferable. However, detectors may consist of thermocouples, optical pyrometers, infrared types, etc. that will provide a linear electrical output proportional to a small temperature rise, capable of sensing a 0,05 °C change in temperature. The detector and its associated amplifier shall have a response time substantially smaller than 2 % of the 'half-rise time' value.

The signal processor includes the electronic circuit to bias out the ambient temperature reading, spike filters, amplifiers, and analog-to-digital converters.

#### 4.2.5 Data acquisition system

The response frequency of the data acquisition system should preferably be faster than about 1 MHz per channel and should have a resolution of A/D converter more than 12 bit.

### 5 Test specimen (disc)

The optimum thickness of specimens depends on the magnitude of the thermal diffusivity of the coating. For low thermal diffusivity, the thickness of the specimen is approximately 1 mm; however, for high thermal diffusivity of the coating, a thick sample is used.

The typical specimens for the determination of thermal diffusivity are thin circular discs of 10 mm in diameter and between 0,8 mm to 2 mm in thickness. Faces of specimens shall be flat and parallel within 0,5 % of their thickness.<sup>[3]</sup> Non-uniformity of surfaces is to be avoided to prevent errors in the measurement of average thicknesses which gives errors in thermal diffusivity data.

For the separation of the coating, either the substrate is prepared with NaCl on the substrate prior to coating by immersing in water to remove the coating, or the coating is applied on a graphite substrate which is then heated to 1000 K for 1 h for removal of the coating.

Mostly, specimens are coated on the front, and at the rear face if an infrared detector is used to check temperature rise, with an opaque or non-reflective film of platinum, nickel, copper, gold or colloidal graphite. These deposits, between 5 µm to 10 µm, shall not react with the specimen or melt or vaporize over a specified temperature range.

### 6 Procedures

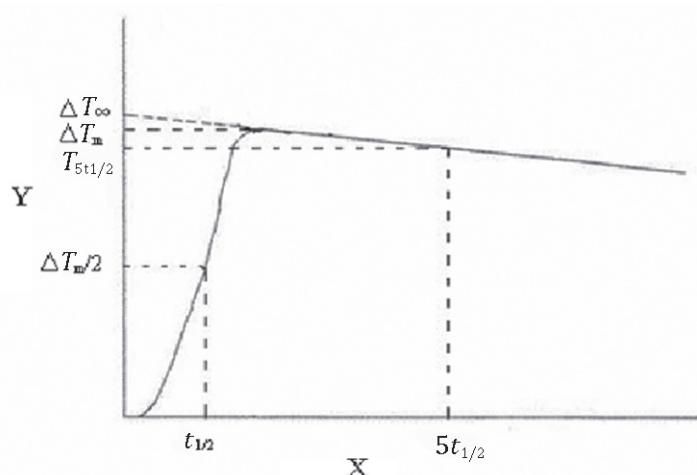
The following preparation procedures of the specimens shall be carried out.

- a) Record mass, dimensions and density of test specimen.
- b) Mount it in a sample holder, set up a vacuum or inert gas atmosphere.

- c) Record the specimen temperature and irradiate the test part with a laser beam. Monitor the base line and transient-rise and cooling data to determine maximum temperature rise, given as  $\Delta T_{mT}$ , where 'mT' is the maximum temperature, in K. Assess the half time,  $t_{1/2}$  value from the initiation of the pulse for the rear-face temperature to reach the half-maximum amount.
- d) Calculate the heat loss calculation factor  $\eta_h$ , finite pulse time effect factor,  $\eta_f$  and thermocouple response time-effects correction factor  $\eta_c$  from the temperature rise data (see [Annex A](#) for calculation of correction factors).
- e) Change the specimen temperature to next value and repeat the tests at different temperatures to obtain appropriate data.

## 7 Calculation of thermal diffusivity

Following Formula (1) and half-rise time,  $t_{1/2}$  from [Figure 2](#), calculate the thermal diffusivity taking into account heat loss correction, finite pulse time-effects correction and thermocouple response time-effects correction given in [Annex A](#).



### Key

- $\tau$  pulse time
- $t_{1/2}$  half-rise time
- $\Delta T_m$  temperature difference between line and maximum rise in temperature
- $\Delta_\infty$  theoretical maximum rise
- X time/s
- Y temperature/K

**Figure 2 — Temperature rise as a function of time**

Thermal diffusivity is able to be calculated using other analysis methods, for example, half-rise time method without correction and curve fitting method. The user should report in detail if they use another analysis method instead of [Annex A](#).

## 8 Test report

The test report shall contain following information:

- a) a reference to this International Standard;
- b) name and address of the testing organization;

- c) date of the test;
- d) description of the material of test specimen;
- e) mass, dimensions of the test specimen, reference sample (sapphire) and glassy carbon;
- f) calculated value of bulk density;
- g) laser pulse source;
- h) environmental conditions;
- i) specimen temperature ( $^{\circ}\text{C}$ ) and type of temperature rise detector;
- j) recorded value of the maximum temperature rise,  $\Delta T_{\text{mT}}$  and the half-maximum temperature rise time,  $t_{1/2}$ ;
- k) calculated values of thermal diffusivity at each measured temperature;
- l) statistical results of repeated measurements at each temperature;
- m) any additional observations concerning the test.

## Annex A (informative)

### Calculations of thermal diffusivity after appropriate corrections

#### A.1 General

For the measurement of thermal diffusivity from Formula (1),

$$\alpha = \omega \left( \frac{L^2}{t_{1/2}} \right)$$

where

$\omega$  is the thermal diffusivity correction factor;

$L$  is the thickness of the specimen, m.

the following corrections are required.

#### A.1.1 Heat loss correction

Heat loss due to vacuum in the control cabinet is primarily due to radiation heat exchange.<sup>[4]</sup> The relationship between the temperature rise and thermal diffusivity is described using Formula (A.1):

$$\Delta T = \Delta T_{\infty} \sum_{n=1}^{\infty} Y_n(0) Y_n(L) \exp\left(-\beta_n^2 \frac{\alpha t}{L^2}\right) \quad (\text{A.1})$$

where

$$\Delta T_{\infty} = \frac{Q}{\rho C_p L};$$

$$Y_n(x) = \frac{\sqrt{2} (\beta_n^2 + H^2)^{1/2} \left[ \beta_n \cos\left(\frac{\beta_n x}{L}\right) + H \sin\left(\frac{\beta_n x}{L}\right) \right]}{\sqrt{(\beta_n^2 + H^2)(\beta_n^2 + H^2 + H) + H(\beta_n^2 + H^2)}};$$

$$H = \frac{hL}{k};$$

$$(\beta_n^2 - H^2) \operatorname{tg} \beta = 2H\beta;$$

$$n = 1, 2, 3, 4 \dots$$

where

$Q$  is the heat quantity, J;

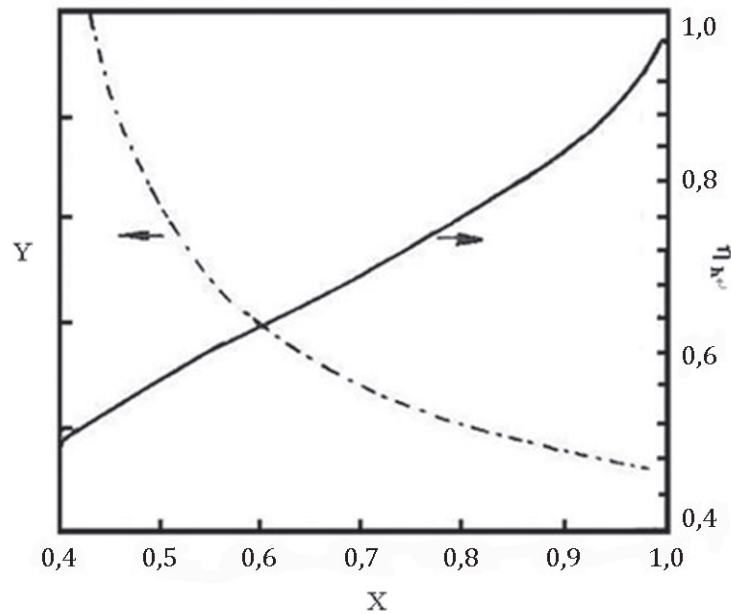
$L$  is the thickness of the specimen, m.

If there is no heat loss, i.e.  $h = 0$ , Formula (A.1) can be described as

$$\Delta T = \Delta T_{\infty} \left[ 1 + 2 \sum_{n=1}^{\infty} (-1)^n \exp\left(-\frac{n^2 \pi^2 \alpha_0 t}{L^2}\right) \right] \quad (\text{A.2})$$

If there is heat loss ( $h > 0$ ) during the measurement procedure, Formula (A.1) can be plotted as [Figure A.1](#) with  $\Delta T_{5t_{1/2}}$ , the rear-face temperature rise after  $5t_{1/2}$ . [Figure A.1](#) shows the relationship between  $T_{5t_{1/2}}$  and heat loss correction factor  $\eta_h$ , from which the heat loss correction factor is calculated.

[Table A.1](#) shows heat loss correction factors  $\eta_h$  at different  $T_{5t_{1/2}}/T_{t_{1/2}}$ .



**Key**

X  $\Delta T_{5t_{1/2}}/\Delta T_{\infty}$

Y  $\Delta T/\Delta T_{\infty}$

**Figure A.1 — Heat loss correction factor  $\eta_h$  as a function of ratio  $\Delta T_{5t_{1/2}}$  and  $\Delta T_{\infty}$**

**Table A.1 — Values of the heat loss correction factor  $\eta_h$  at different  $T_{5t_{1/2}}/T_{t_{1/2}}$**

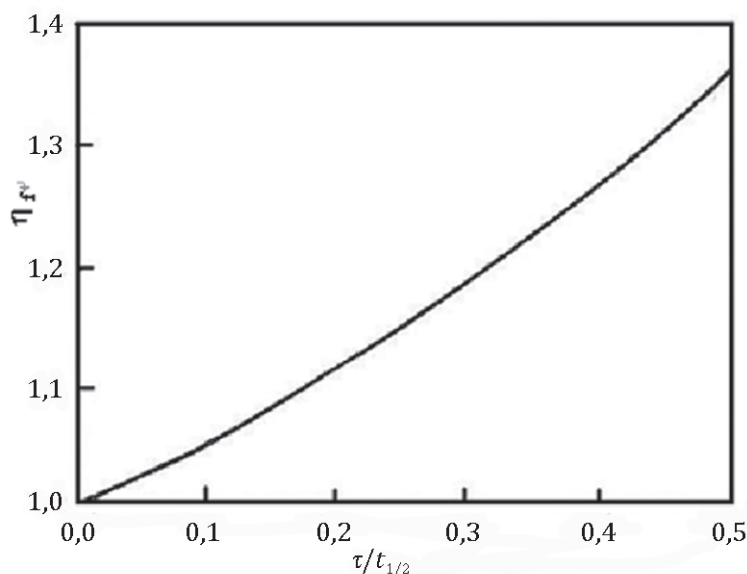
$T_{5t_{1/2}}/T_{t_{1/2}}$	$\eta_h$	$T_{5t_{1/2}}/T_{t_{1/2}}$	$\eta_h$
2,00	1	1,85	0,856
1,99	0,957	1,835	0,849
1,98	0,942	1,82	0,842
1,97	0,935	1,80	0,835
1,96	0,928	1,785	0,827
1,95	0,921	1,77	0,820
1,945	0,914	1,755	0,813
1,93	0,906	1,735	0,806
1,92	0,899	1,72	0,799
1,91	0,892	1,70	0,791
1,90	0,885	1,68	0,784
1,89	0,878	1,66	0,777
1,875	0,870	1,64	0,770
1,86	0,863	1,62	0,763

### A.1.2 Finite pulse time-effects correction

It is assumed that due to finite pulse effect, measurement of thermal diffusivity will be influenced. The relationship between the finite pulse time-effects correction factors and  $t_{1/2}$  is described as:

$$\eta_f = \frac{2,92t_{1/2}}{\tau} \sum_{n=1}^{\infty} \frac{(-1)^n}{n^2} \exp(-1,37n^2\eta_f) \left[ 1 - \exp\left(\frac{1,37n^2\tau\eta_f}{t_{1/2}}\right) \right] \quad (\text{A.3})$$

Plotting Formula (A.3) as [Figure A.2](#), pulse time effect  $\eta_f$  can be recorded as a function of ratio of  $\tau/t_{1/2}$ , where  $\tau$  is pulse time and  $t_{1/2}$  is 'half-rise' time. To minimize the finite pulse time effects,  $\tau/t_{1/2}$  shall be less than 0,02. If there is sufficient pulse width ( $\tau/t_{1/2}$ ),  $\eta_f$  is 1,0.



**Figure A.2 — Pulse time effect  $\eta_f$  as a function of ratio  $\tau/t_{1/2}$**

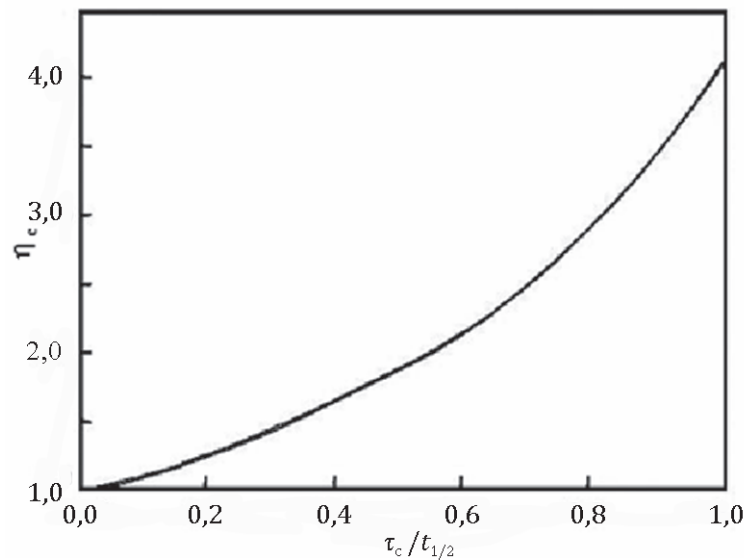


### A.1.3 Thermocouple response time-effects correction

Distortion due to the response time effects of the thermocouple, if the measurement system uses the thermocouple as a temperature detector, is shown in [Figure A.3](#). The relationship can be described as:

$$\frac{1}{2} = \exp\left(-\frac{t_{1/2}}{\tau_c}\right) + 2 \sum_{n=1}^{\infty} \frac{(-1)^n}{\left(1 - \frac{1,37n^2\tau_c\eta_c}{t_{1/2}}\right)} \left[ \exp(-1,37\eta_c n^2) - \exp\left(\frac{t_{1/2}}{\tau_c}\right) \right] \quad (\text{A.4})$$

where



$\tau_c$  is the time constant of thermocouple for known material and dimensions;

$\eta_c$  is the thermocouple response time-effects correction factor.

**Figure A.3 — Thermocouple response time-effects correction factor  $\eta_c$  as a function of ratio  $\tau_c/t_{1/2}$**

The relationship between  $\tau_c$  and  $\eta_c$  is shown in [Figure A.3](#) following the calculation of Formula (A.4). Therefore, to avoid thermocouple response time effects, use of non-contact type sensor for the measurement of thermal diffusivity is supported.

### A.1.4 Calculation

Taking into account all the above correction factors, thermal diffusivity  $\alpha$  is calculated as follows:

$$\alpha = \frac{0,139\eta_h\eta_f\eta_c L^2}{t_{1/2}} \quad (\text{A.5})$$

where

- $\eta_h$  is the heat loss correction factor;
- $\eta_f$  is the finite pulse time-effects correction factor;
- $\eta_c$  is the thermocouple response time-effects correction factor;
- $L$  is the specimen thickness, m;
- $t_{1/2}$  is the half-rise time, s.

The test method is considered as an absolute method of measurement because no reference sample is required. For verification of performance of the instrument system, use of reference materials are required.

## Bibliography

- [1] ISO 18755, *Fine ceramics (advanced ceramics, advanced technical ceramics) — Determination of thermal diffusivity of monolithic ceramics by laser flash method*
- [2] EN 821-2, *Advanced technical ceramics — Monolithic ceramics — Thermo-physical properties — Part 2: Determination of thermal diffusivity by the laser flash (or heat pulse) method*
- [3] ASTM E1461, *Standard Test Method for Thermal Diffusivity by the Flash Method*
- [4] YUQIN G., & HONG L. Analysis and modification of thermophysical property measurements by laser pulse method. *Journal of Astronautic Metrology and Measurement*. 1977, 7 pp. 42–48





# British Standards Institution (BSI)

BSI is the national body responsible for preparing British Standards and other standards-related publications, information and services.

BSI is incorporated by Royal Charter. British Standards and other standardization products are published by BSI Standards Limited.

## About us

We bring together business, industry, government, consumers, innovators and others to shape their combined experience and expertise into standards-based solutions.

The knowledge embodied in our standards has been carefully assembled in a dependable format and refined through our open consultation process. Organizations of all sizes and across all sectors choose standards to help them achieve their goals.

## Information on standards

We can provide you with the knowledge that your organization needs to succeed. Find out more about British Standards by visiting our website at [bsigroup.com/standards](http://bsigroup.com/standards) or contacting our Customer Services team or Knowledge Centre.

## Buying standards

You can buy and download PDF versions of BSI publications, including British and adopted European and international standards, through our website at [bsigroup.com/shop](http://bsigroup.com/shop), where hard copies can also be purchased.

If you need international and foreign standards from other Standards Development Organizations, hard copies can be ordered from our Customer Services team.

## Subscriptions

Our range of subscription services are designed to make using standards easier for you. For further information on our subscription products go to [bsigroup.com/subscriptions](http://bsigroup.com/subscriptions).

With **British Standards Online (BSOL)** you'll have instant access to over 55,000 British and adopted European and international standards from your desktop. It's available 24/7 and is refreshed daily so you'll always be up to date.

You can keep in touch with standards developments and receive substantial discounts on the purchase price of standards, both in single copy and subscription format, by becoming a **BSI Subscribing Member**.

**PLUS** is an updating service exclusive to BSI Subscribing Members. You will automatically receive the latest hard copy of your standards when they're revised or replaced.

To find out more about becoming a BSI Subscribing Member and the benefits of membership, please visit [bsigroup.com/shop](http://bsigroup.com/shop).

With a **Multi-User Network Licence (MUNL)** you are able to host standards publications on your intranet. Licences can cover as few or as many users as you wish. With updates supplied as soon as they're available, you can be sure your documentation is current. For further information, email [bsmusales@bsigroup.com](mailto:bsmusales@bsigroup.com).

## BSI Group Headquarters

389 Chiswick High Road London W4 4AL UK

## Revisions

Our British Standards and other publications are updated by amendment or revision.

We continually improve the quality of our products and services to benefit your business. If you find an inaccuracy or ambiguity within a British Standard or other BSI publication please inform the Knowledge Centre.

## Copyright

All the data, software and documentation set out in all British Standards and other BSI publications are the property of and copyrighted by BSI, or some person or entity that owns copyright in the information used (such as the international standardization bodies) and has formally licensed such information to BSI for commercial publication and use. Except as permitted under the Copyright, Designs and Patents Act 1988 no extract may be reproduced, stored in a retrieval system or transmitted in any form or by any means – electronic, photocopying, recording or otherwise – without prior written permission from BSI. Details and advice can be obtained from the Copyright & Licensing Department.

## Useful Contacts:

### Customer Services

**Tel:** +44 845 086 9001

**Email (orders):** [orders@bsigroup.com](mailto:orders@bsigroup.com)

**Email (enquiries):** [cservices@bsigroup.com](mailto:cservices@bsigroup.com)

### Subscriptions

**Tel:** +44 845 086 9001

**Email:** [subscriptions@bsigroup.com](mailto:subscriptions@bsigroup.com)

### Knowledge Centre

**Tel:** +44 20 8996 7004

**Email:** [knowledgecentre@bsigroup.com](mailto:knowledgecentre@bsigroup.com)

### Copyright & Licensing

**Tel:** +44 20 8996 7070

**Email:** [copyright@bsigroup.com](mailto:copyright@bsigroup.com)



...making excellence a habit.™