

BS ISO 12817:2013



BSI Standards Publication

Fibre-reinforced plastic composites — Determination of open-hole compression strength

bsi.

...making excellence a habit.™

National foreword

This British Standard is the UK implementation of ISO 12817:2013.

The UK participation in its preparation was entrusted to Technical Committee PRI/42, Fibre reinforced thermosetting plastics and preregs.

A list of organizations represented on this committee can be obtained on request to its secretary.

This publication does not purport to include all the necessary provisions of a contract. Users are responsible for its correct application.

© The British Standards Institution 2013.
Published by BSI Standards Limited 2013.

ISBN 978 0 580 66126 6

ICS 83.120

Compliance with a British Standard cannot confer immunity from legal obligations.

This British Standard was published under the authority of the Standards Policy and Strategy Committee on 31 March 2013.

Amendments issued since publication

Date	Text affected
------	---------------

INTERNATIONAL
STANDARD

ISO
12817

First edition
2013-03-15

**Fibre-reinforced plastic composites —
Determination of open-hole
compression strength**

*Composites plastiques renforcés de fibres — Détermination de la
résistance à la compression avec trou nu*



Reference number
ISO 12817:2013(E)

© ISO 2013



COPYRIGHT PROTECTED DOCUMENT

© ISO 2013

All rights reserved. Unless otherwise specified, no part of this publication may be reproduced or utilized otherwise in any form or by any means, electronic or mechanical, including photocopying, or posting on the internet or an intranet, without prior written permission. Permission can be requested from either ISO at the address below or ISO's member body in the country of the requester.

ISO copyright office
Case postale 56 • CH-1211 Geneva 20
Tel. + 41 22 749 01 11
Fax + 41 22 749 09 47
E-mail copyright@iso.org
Web www.iso.org

Published in Switzerland

Contents

Page

Foreword	iv
Introduction	v
1 Scope	1
2 Normative references	1
3 Terms and definitions	2
4 Principle	2
5 Apparatus	3
6 Test specimens	9
6.1 Shape and dimensions.....	9
6.2 Alternative specimen.....	9
6.3 Preparation of test plates and specimens.....	11
6.4 Inspection of test specimens.....	11
6.5 Number of test specimens.....	11
7 Conditioning	12
8 Procedure	12
8.1 Test atmosphere.....	12
8.2 Measurement of dimensions of the test specimens.....	12
8.3 Mounting of the test specimens.....	12
8.4 Test speed.....	12
8.5 Preliminary loading.....	12
8.6 Recording.....	12
8.7 Failure mode.....	13
9 Calculation	13
9.1 Open-hole compressive strength.....	13
9.2 Expression of results.....	14
10 Precision	14
11 Test report	16
Bibliography	17

Foreword

ISO (the International Organization for Standardization) is a worldwide federation of national standards bodies (ISO member bodies). The work of preparing International Standards is normally carried out through ISO technical committees. Each member body interested in a subject for which a technical committee has been established has the right to be represented on that committee. International organizations, governmental and non-governmental, in liaison with ISO, also take part in the work. ISO collaborates closely with the International Electrotechnical Commission (IEC) on all matters of electrotechnical standardization.

International Standards are drafted in accordance with the rules given in the ISO/IEC Directives, Part 2.

The main task of technical committees is to prepare International Standards. Draft International Standards adopted by the technical committees are circulated to the member bodies for voting. Publication as an International Standard requires approval by at least 75 % of the member bodies casting a vote.

Attention is drawn to the possibility that some of the elements of this document may be the subject of patent rights. ISO shall not be held responsible for identifying any or all such patent rights.

ISO 12817 was prepared by Technical Committee ISO/TC 61, *Plastics*, Subcommittee SC 13, *Composites and reinforcement fibres*.

Introduction

In preparing this (harmonized) International Standard, reference has been made to other similar open-hole compression methods (JIS K 7093,^[1] ASTM D6484/D6484M-09^[2]) and related methods, i.e. open-hole tension in ASTM D5766/D5766M6^[3] and pin-bearing in ISO 12815.^[4]

The scope covers all current and future fibre-reinforced plastic composites meeting the requirements of this International Standard. This International Standard incorporates three methods that have different suitability and do not necessarily yield identical properties. All the methods use the maximum load to define the open-hole compressive strength.

Fibre-reinforced plastic composites — Determination of open-hole compression strength

1 Scope

This International Standard specifies the test method to determine the open-hole compressive strength of laminated fibre-reinforced plastic composites. The laminate is intended to be a balanced and symmetrical lay-up or be otherwise homogeneous through the thickness. This International Standard applies to all textile diameter fibre types (carbon, glass, aramids, etc.) and matrices (e.g. thermoset, thermoplastic) that meet the requirements of this International Standard.

This International Standard includes three methods:

- method 1 (short specimen with support fixture);
- method 2 (short specimen without support fixture);
- method 3 (long specimen with support fixture as in ASTM D6484/D6484M-09, methods A and B).

Method 1 employs an L-shaped base fixture and two end fixtures. These end fixtures are compressed between the platens of the test machine.

Method 2 employs end supports similar to the fixtures given in C.1 of ISO 14126:1999. Method 2 is useful for cyclic loading conditions test, including under fully or partly reversed loading conditions when the specimen is clamped by hydraulic grips without support fixtures

Method 3 has two types of loading methods, i.e. 3A and 3B. In method 3A, the specimen is placed within a stabilization fixture, which is then clamped by hydraulic grips. In method 3B, the specimen is placed within a stabilization fixture and then end-loaded by platens. Full details of test methods 3A and 3B are given in ASTM D6484/D6484M-09, procedure A and procedure B, respectively.

NOTE Specimen configurations and force introduction varies for the three methods covered within this International Standard. Results obtained using methods 1, 2 and 3 might not be equivalent for all laminates in all environments.

2 Normative references

The following documents, in whole or in part, are normatively referenced in this document and are indispensable to its application. For dated references, only the edition cited applies. For undated references, the latest edition of the referenced document (including any amendments) applies.

ISO 291, *Plastics — Standard atmospheres for conditioning and testing*

ISO 472, *Plastics — Vocabulary*

ISO 1268 (all parts), *Fibre-reinforced plastics — Methods of producing test plates*

ISO 2818, *Plastics — Preparation of test specimens by machining*

ISO 5893, *Rubber and plastics test equipment — Tensile, flexural and compression types (constant rate of traverse) — Specification*

ISO 14126:1999, *Fibre-reinforced plastic composites — Determination of compressive properties in the in-plane direction*

3 Terms and definitions

For the purposes of this document, the terms and definitions given in ISO 472 and the following apply.

3.1 open-hole diameter

diameter of the open hole in the centre of the test specimen

Note 1 to entry: Open-hole diameter is expressed in millimetres (mm).

Note 2 to entry: See [Figure 1](#).

3.2 width

w
overall width of the specimen

Note 1 to entry: Width is expressed in millimetres (mm).

3.3 coordinate axes of a test specimen

direction parallel with the plate longitudinal axis, which is the X direction and the direction perpendicular, which is the Y direction

Note 1 to entry: See ISO 1268-4.

3.4 open-hole compressive stress

value obtained by dividing a compressive load applied to a test specimen by the gross cross-section based on the overall width and thickness of the test specimen

Note 1 to entry: Open-hole compressive stress is expressed in megapascals (MPa).

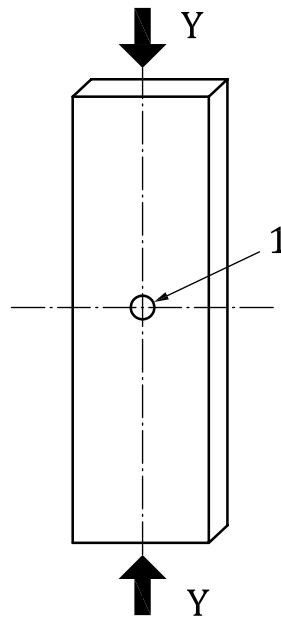
3.5 open-hole compressive strength

maximum open-hole compressive stress generated in the test specimen

Note 1 to entry: Open-hole compressive strength is expressed in megapascals (MPa).

4 Principle

A test specimen consisting of a strip of rectangular cross-section with a plain open hole centrally positioned, as shown in [Figure 1](#), is loaded in compression. The maximum load sustained by the specimen is used to determine the open-hole (notched) compressive strength based on the gross specimen cross-section.



Key

Y load direction

1 open hole

Figure 1 — Open-hole laminated composite test specimen and load direction

5 Apparatus

5.1 Test machine

5.1.1 General, the machine shall conform to ISO 5893, as appropriate to the requirements given in [5.1.2](#) and [5.1.3](#).

5.1.2 Speed of testing. The test machine shall be capable of maintaining the required speed of testing (see [8.4](#)).

5.1.3 Indication of load, the error for the indicated load not exceeding 1 %.

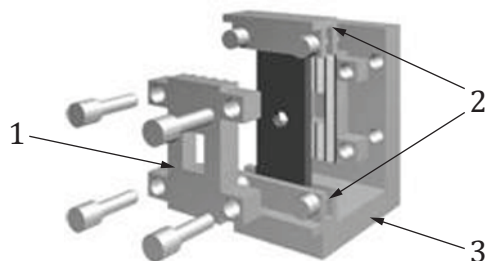
5.1.4 Load measurement system, comprising a mechanism to indicate continuously the compressive load applied to the test piece. The loading mechanism shall not cause delay due to inertia at the specified test speed and shall indicate the load value with a precision equal to or higher than ± 1 % of the full scale of load cell measurement capacity.

5.1.5 Loading platens (method 1 and method 3B), each (platen plate) being located on the movable part (platen plate) and fixed part (base plate), respectively, of the test machine and the centre of the upper and lower pressing faces coinciding with the centreline of the loading direction of the test machine. The alignment of the test fixture shall enable a compressive load to be applied to the platen plate and the base plate in the axial direction of a test specimen, and forces other than the compressive load shall be minimized.

5.1.6 Hydraulic grips (method 2 and method 3A), each located on the movable and fixed parts, respectively, of the test machine and the centre of the upper and lower grips coinciding with the centreline of the load gauge. The test set-up arrangement shall be such that a compressive load is applied to the upper and lower grips in the axial direction of a test specimen, and forces other than the compressive load shall be minimized.

5.2 Test fixtures, for method 1 and method 3, which support the test specimen to prevent buckling phenomenon, and which apply compressive load to the test specimen. They shall be made of low-carbon steel or stainless steel. [Figure 2](#) shows an outline of the out-of-plane deformation support fixture assembly for method 1. [Figures 3](#) to [7](#) show detailed dimensions of the out-of-plane deformation support fixture, L-shaped base plate, end-loading fixtures and support fixture for method 1.

Method 3 requires out-of plane support fixtures. There are two compression-loading conditions for method 3, shear loaded by clamped hydraulic wedge grips (method 3A) and end loaded by platen plates (method 3B). Methods 3A and 3B require the same stabilization fixture. Details of the support fixture for method 3 are given in ASTM D6484/D6484M-09.

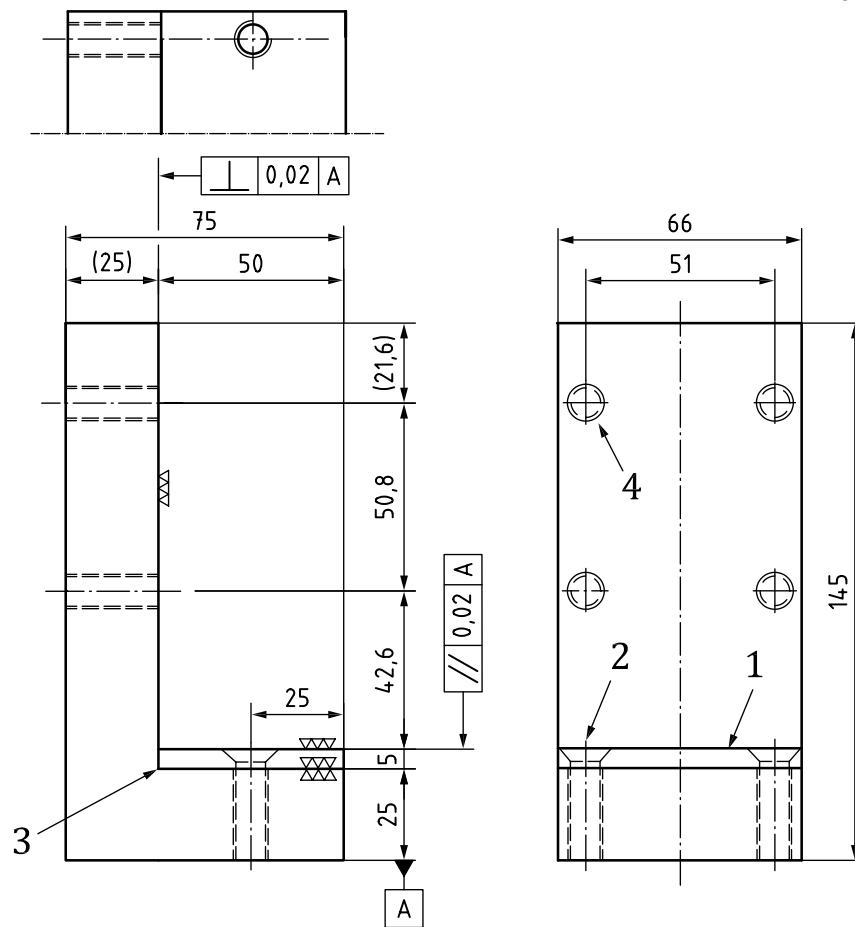


Key

- 1 out-of-plane deformation support fixture
- 2 end-loading fixtures
- 3 L-shaped base plate

Figure 2 — Outline of the fixture

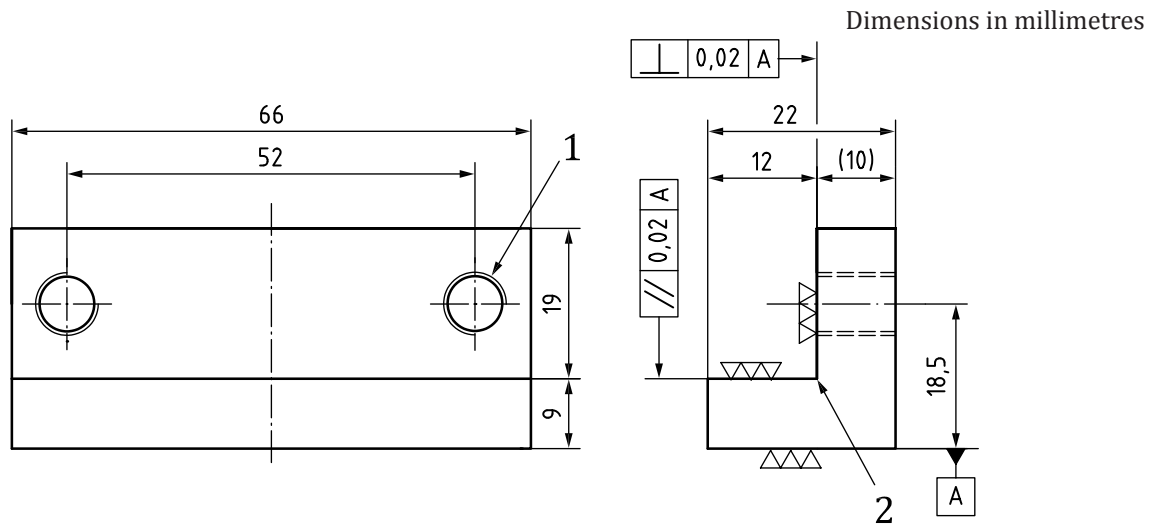
Dimensions in millimetres



Key

- 1 S55C, quenched, HRC 50
- 2 2 × M6 countersunk screw
- 3 relief radius R0,1 plate R0,5
- 4 4 × M8 × 1,25 through

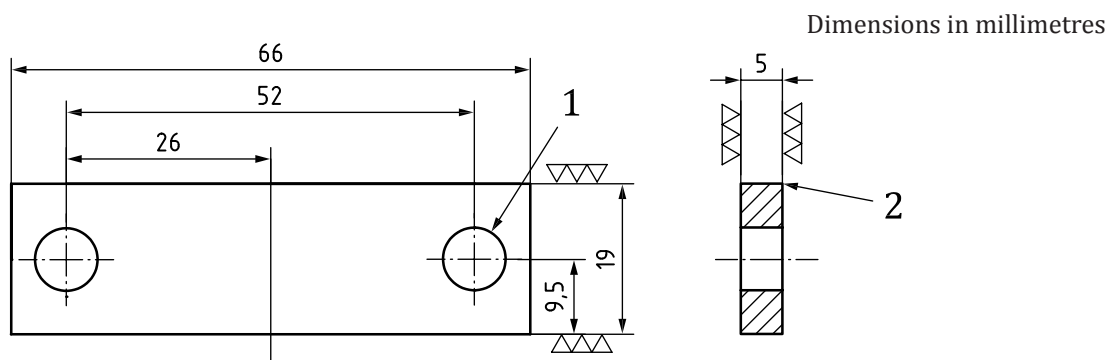
Figure 3 — L-shaped base plate for method 1



Key

- 1 2 × M8 × 1,25
- 2 relief radius R0,1 maximum

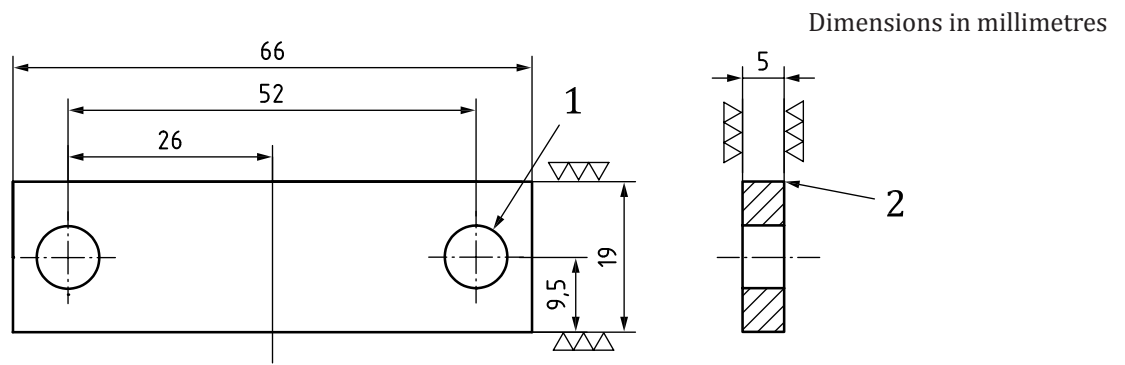
Figure 4 — End-loading fixture (upper) for method 1



Key

- 1 2 × M8 × 1,25
- 2 relief radius R0,1 maximum

Figure 5 — End-loading fixture (lower) for method 1

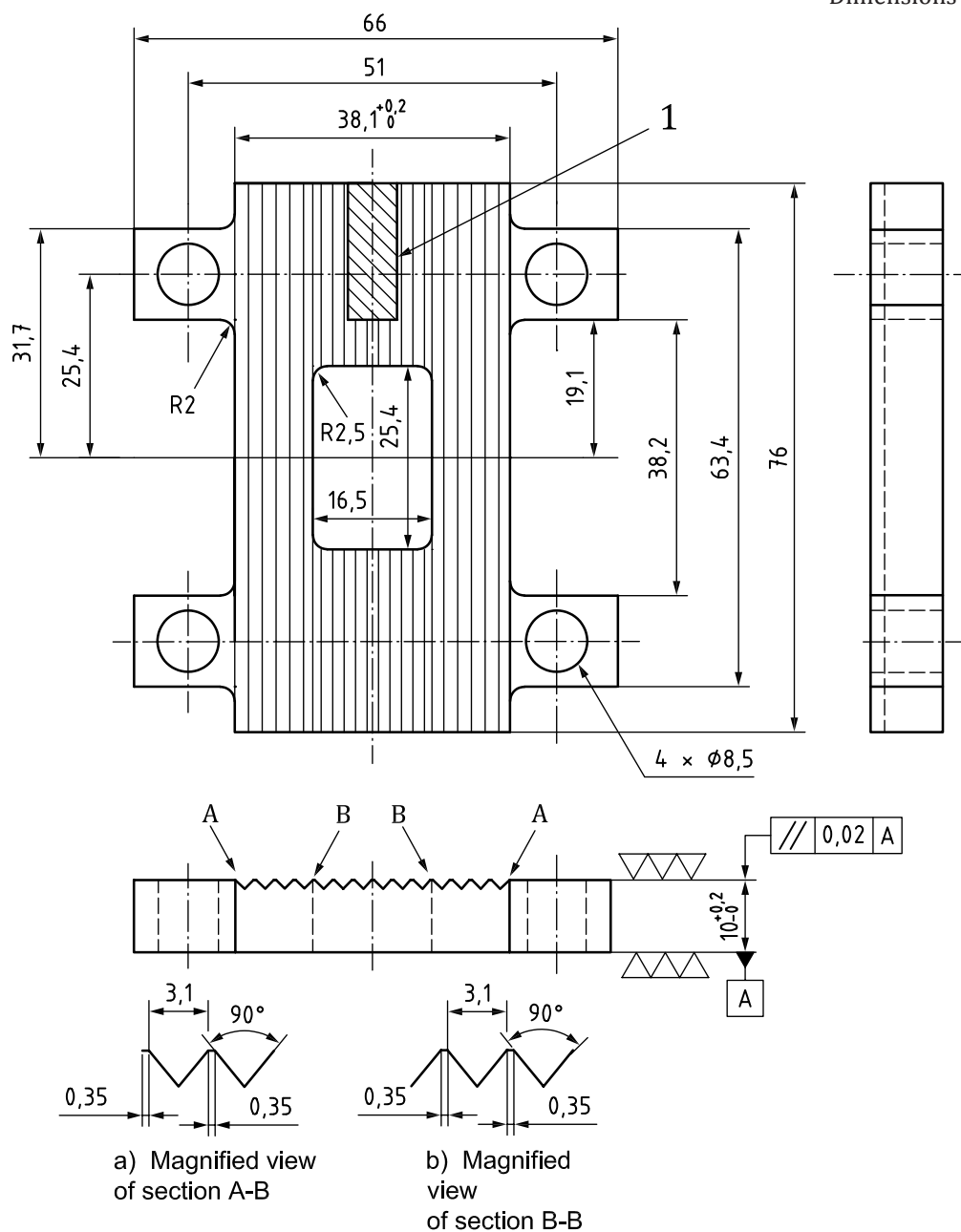


Key

- 1 2 × M8 × 1,25
- 2 relief radius R0,1 maximum

Figure 6 — End-loading fixture plate for method 1 (quantity: 2, common for the upper and lower)

Dimensions in millimetres



Key

- 1 strain gauge bonding area (strain gauge shall be located on the specimen) (6,8 × 18,9 mm, machined to grooved bottom surface)

Figure 7 — Out-of-plane support fixture for method 1 (quantity: two sets)

5.3 Micrometers and calipers

- a) **Vernier caliper**, used to measure the length and width of the test specimen, and having a precision of 0,05 mm or better.
- b) **Micrometer or equivalent**, used to measure the specimen thickness and open-hole diameter of a test specimen, and having a precision of 0,01 mm or better. The micrometer shall have faces appropriate to the surface being measured (i.e. flat faces for flat, polished surfaces and hemispherical faces for irregular surfaces).

6 Test specimens

6.1 Shape and dimensions

The major dimensions of these test specimens are shown as specified in [Table 1](#), and are shown in [Figures 8](#) and [9](#). Details of the test specimen for method 3 are given in ASTM D6484/D6484M-09.

Table 1 — Dimensions of test specimens for methods 1 and 2

Dimensions in millimetres

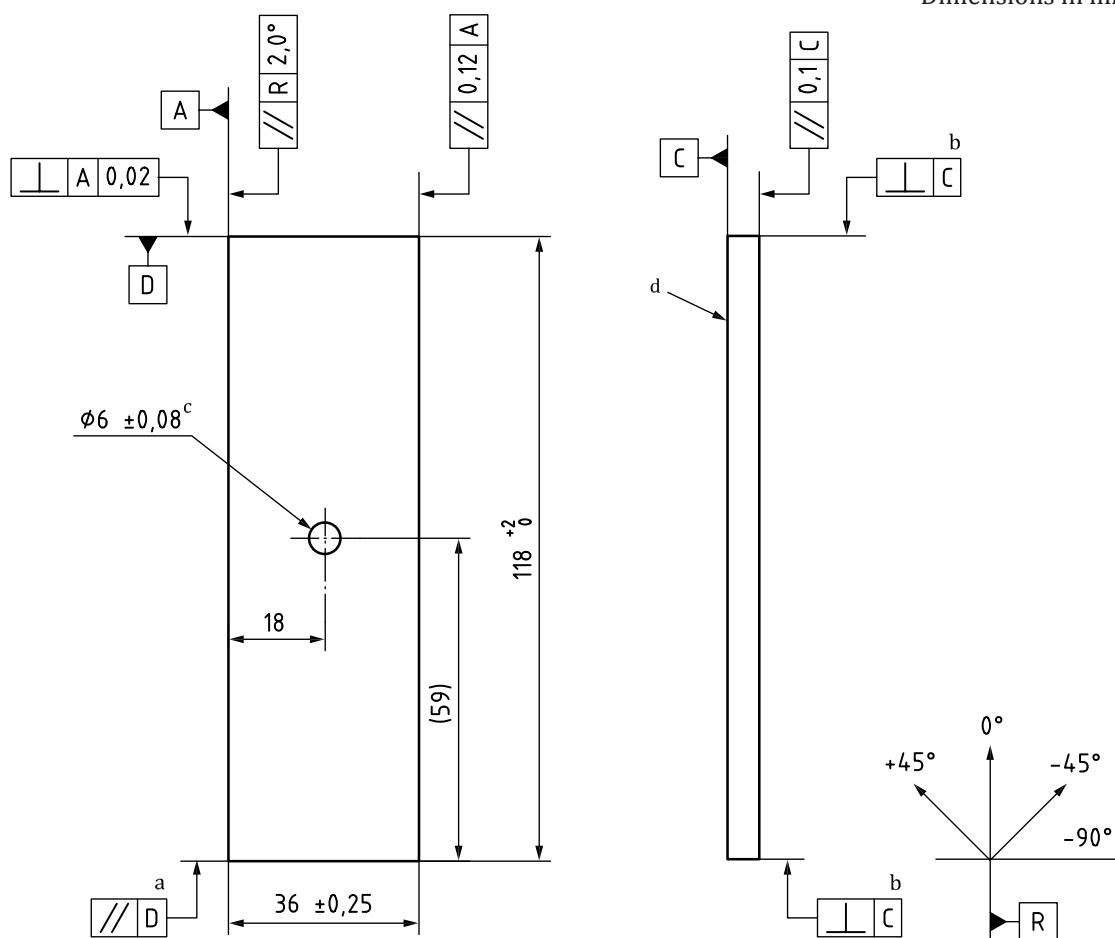
Item	Method 1	Method 2	Method 3 ^a
Width <i>b</i>	36,0 ± 0,25	36,0 ± 0,5	36
Length <i>l</i>	118,0 + 2,0/-0	125.0 ± 1,0	300
Thickness <i>h</i>	2,5 (std.)	4,0 (min.)	4
Open-hole diameter <i>d</i>	6,0 ± 0,08	6,0 ± 0.02	6
^a Mean values only; see ASTM D6484/D6484M for tolerances.			

6.2 Alternative specimen

Alternative specimens shall maintain a specimen width-to-hole diameter ratio of 6.

NOTE A 0,25" (6,35mm) hole in a 1,5" (38,1 mm) wide specimen meets this requirement.

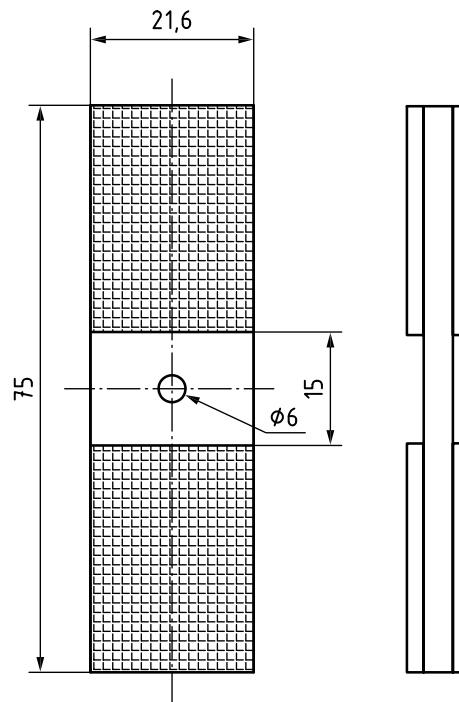
Dimensions in millimetres



- a Parallelism of top and bottom surfaces shall be within 0,02 mm for method 1.
- b Perpendicularity of top and bottom surfaces against plane C shall be within 0,02 mm for method 1.
- c Hole shall be free of ply peeling or other damage.
- d Seal side.

Figure 8 — Shape and dimensions of the test specimen for method 1

Dimensions in millimetres



- ^a End tabs are not normally required. Guidance on tabbing materials and method, if required, is given in ISO 527-4.

Figure 9 — Shape and dimensions of the test specimen for method 2

6.3 Preparation of test plates and specimens

In accordance with ISO 1268 (all parts) or by mutual agreement of the parties concerned, the test specimens shall be machined to the specified dimensions from a laminated fibre-reinforced plastics manufactured by compression moulding, autoclave moulding or other similar methods. The typical configuration of the test specimens lamination of unidirectional material, shall be quasi-isotropic laminates in 16 layers of $(45/0/-45/90)_{2S}$. When using two-dimensionally woven material, such as plain woven or satin woven fabric, $[(45/-45), (0/90)]_{nS}$ shall be employed and the integer “n” that is closest to the thickness given in [Table 1](#) shall be determined. The edges of test specimens shall be prepared by machining in accordance with ISO 2818. The hole shall be made using a drill suitable for use with fibre-reinforced plastics, followed by reamer finishing, if required. These operations shall be properly performed to prevent the generation of burrs or interlaminar resin cracking.

6.4 Inspection of test specimens

Each test specimen shall be flat, free from any twist, and have no defect on its surface and edges. No delamination around the open-hole edges shall be allowed. The thickness and width of each test specimen shall be in accordance within the tolerance and parallelism given in [Table 1](#).

6.5 Number of test specimens

At least five test specimens shall be tested. The number of measurements may be more than five if greater precision of the mean value is required.

7 Conditioning

Conditioning of the test specimen shall be selected in accordance with those specified in ISO 291.

8 Procedure

8.1 Test atmosphere

The specimen shall be tested as specified in ISO 291.

8.2 Measurement of dimensions of the test specimens

Prior to testing, the dimensions of test specimens shall be measured in the test conditions prescribed in [Clause 5](#). The length of a test specimen is measured to a precision of 0,05 mm using a sliding caliper. The width and thickness in the middle area to a precision of 0,01 mm using a micrometer. The hole diameter is also measured to a precision of 0,01 mm using a micrometer.

8.3 Mounting of the test specimens

8.3.1 Method 1

As shown in [Figure 2](#), the end-loading fixtures (see [Figures 4, 5, and 6](#)) are attached at the upper and lower ends of the test specimen by four bolts. The test specimen with the out-of-plane support fixtures (see [Figure 7](#)) is clamped and installed on the L-shaped base plate that is tightened by torque approximately 0,10 Nm to 0,15 Nm. The assembly of test specimen and fixtures are clamped between the platen plate and base plate of the test machine.

8.3.2 Method 2

The test specimen is clamped by hydraulic or equivalent grip at the upper and lower ends of the test specimen.

8.3.3 Method 3

Test specimen installation of method 3A and method 3B is given in ASTM D6484/D6484M-09, procedures A and B.

8.4 Test speed

The test speed shall be 0,5 mm/min to 1,5 mm/min for method 1 and method 2.

NOTE The test speed of method 3 is given in ASTM D6484/D6484M-09.

8.5 Preliminary loading

To stabilize the loading fixture set-up, apply a preliminary loading of 5 kN, and then, remove the load before conducting the compression strength test for method 1 and method 3. This preliminary loading process is not required for method 2.

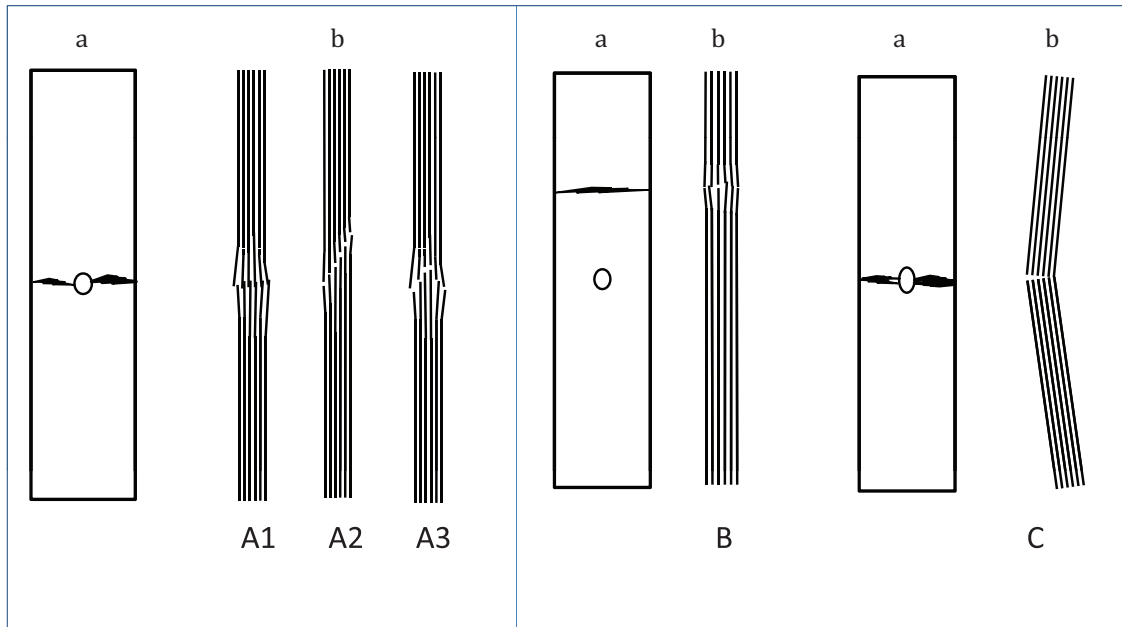
Details of preliminary loading for method 3 are given in ASTM D6484/D6484M-09.

8.6 Recording

Record the load applied to the test specimen and the crosshead travel (displacement) until test specimen failure.

8.7 Failure mode

The failure mode of the test specimen shall be identified corresponding to the open-hole compressive failure indicated in [Figure 10](#). Where the fracture modes are inappropriate, the fracture modes shall be reported in the test results.



a) Appropriate failure modes A1, A2 and A3

b) Inappropriate failure modes B and C

a Plane view.

b Side views.

Figure 10 — Typical failure modes of open-hole compressive specimen

9 Calculation

9.1 Open-hole compressive strength

Calculate the open-hole compressive strength using Formula (1).

$$\sigma_{\text{OHC}} = \frac{F}{wh} \quad (1)$$

where

σ_{OHC} is the open-hole compressive strength (MPa);

F is the maximum load (N);

w is the width of test specimen (mm);

h is the thickness of test specimen (mm).

9.2 Expression of results

Calculate the open-hole compressive strength for each test specimen and calculate the mean value to three significant figures. When the standard deviation and coefficient of variation are required, these values are calculated by Formulae (2) and (3).

$$s = \sqrt{\frac{\sum (x - \bar{x})^2}{n-1}} \quad (2)$$

$$C_V = \frac{s}{x} \times 100 \quad (3)$$

where

- s is the standard deviation;
- C_V is the coefficient of variation (%);
- x is the individual measured value;
- \bar{x} is the mean measured value;
- n is the number of measured values.

10 Precision

The precision of method 1 obtained in an interlaboratory study is summarized below (see [Table 2](#) and [Table 3](#)). Four materials manufactured from prepregs using an autoclave were tested. Full details are reported.^[4]

Four materials fabricated from mid-modulus/high-strength carbon fibre/epoxy prepregs using different reinforcement styles, thicknesses and lay-ups were tested as follows:

- material 1 UD 16ply Quasi isotropic, Autoclave, by seven laboratories;
- material 2 UD 32ply Quasi isotropic, Autoclave, by four laboratories;
- material 3 UD 16ply Quasi isotropic, Autoclave, by six laboratories;
- material 4 5HS Satin 8ply Quasi isotropic, Autoclave, by nine laboratories.

Table 2 — Repeatability, reproducibility and mean notched stress for open-hole compressive specimens

Material code	Repeatability conditions		Reproducibility conditions		Open-hole compressive strength MPa
	S_r	r	S_R	R	
1	5,48	15,20	5,48	15,20	278,9
2	5,52	15,30	6,08	16,80	317,3
3	9,00	24,90	9,00	24,90	307,7
4	9,47	26,20	10,20	28,40	286,6

Table 3 — Repeatability and reproducibility values as a percentage of mean values for open-hole compressive specimens

Material code	Value as percentage of mean			
	Repeatability conditions		Reproducibility conditions	
	S_r	r	S_R	R
1	1,96	5,45	1,96	5,45
2	1,98	5,49	2,18	6,02
3	3,23	8,93	3,23	8,93
4	3,40	9,39	3,66	10,18

The precision of method 2 obtained in an interlaboratory study is summarized below (see [Table 4](#) and [Table 5](#)). Four materials representing the range of fibre-reinforced plastic composites were tested in an interlaboratory trial by six laboratories. Full details are reported.^[4] The materials tested were:

- material 1 chopped strand-mat glass-fibre/ polyester (CSM) hand laid-up;
- material 2 woven glass-fibre/epoxy press moulded;
- material 3 glass-fibre/polyester mixed format pultrusion (PUL);
- material 4 unidirectional carbon-fibre/ epoxy, autoclave moulded (CFRP).

Table 4 — Repeatability, reproducibility and mean notched stress for open-hole compressive specimens

Material code	Repeatability conditions		Reproducibility conditions		Open-hole compressive strength MPa
	S_r	r	S_R	R	
1	7,82	21,89	7,92	22,17	141,31
2	10,72	30,01	13,24	37,07	272,76
3	9,90	27,71	10,64	29,79	266,93
4	4,77	13,35	11,39	31,88	341,47

Table 5 — Repeatability and reproducibility values as a percentage of mean values for open-hole compressive specimens

Material code	Value as percentage of mean			
	Repeatability conditions		Reproducibility conditions	
	S_r	r	S_R	R
1	5,53	15,49	5,60	15,69
2	3,93	11,00	4,85	13,59
3	3,71	10,38	3,99	11,16
4	1,40	3,91	3,34	9,34

NOTE The definitions are taken directly from ISO 5725 (all parts).

Repeatability value, r : the value below which the absolute difference between two single test results obtained under repeatability conditions may be expected to lie with a probability of 95 %.

Reproducibility value, R : the value below which the absolute difference between two single test results obtained under reproducibility conditions may be expected to lie with a probability of 95 %.

Repeatability standard deviation, S_R : the standard deviation of test results obtained under repeatability conditions.

Reproducibility standard deviation, S_R : the standard deviation of test results obtained under reproducibility conditions.

11 Test report

The test report shall include the following information for methods 1 and 2. (Report requirements for method 3 are given in ASTM D6484/D6484M-09.)

- a) a reference to this International Standard, i.e. ISO 12817, and the method used;
- b) all details necessary to identify the test material (sample moulding methods, laminate configuration, volumetric or mass content, etc.);
- c) the dimensions, preparation conditions and sampling methods of test specimens;
- d) the tab material (if applicable to method 2);
- e) the number of test specimens tested;
- f) the temperature, humidity and time of test specimen conditioning;
- g) the test temperature and humidity;
- h) the accuracy grading of the test machine (ISO 5893);
- i) the test methods employed (method 1, 2, 3);
- j) the test speed;
- k) the test results for open-hole compressive strength, individual and mean values, standard deviation and coefficient of variation, as required, typical load-displacement diagram;
- l) the mode of failure for each test;
- m) the date of the test;
- n) a statement as to whether any test specimens were rejected and, if so, why;
- o) the standard deviations and the 95 % confidence intervals of the mean values, if required;
- p) any operation not specified in this International Standard, as well as any incident likely to have affected the results.

Bibliography

- [1] JIS K 7093, *Test method for open-hole compressive strength of carbon fibre reinforced plastic*
- [2] ASTM D6484/D6484M-09, *Standard Test Method for Open-Hole Compressive Strength of Polymer Matrix Composite Laminates*
- [3] ASTM D5766/D5766M-11, *Standard Test Method for Open-Hole Tensile Strength of Polymer Matrix Composite Laminates*
- [4] ISO 12815, *Fibre-reinforced plastic composites — Determination of plain-pin bearing strength*
- [5] ISHIKAWA T., HAMAGUCHI Y., SHIKATA N., BEN G., KAGEYAMA K. *Journal of the Japan Society for Composite Materials*. 2005, **31** (5)
- [6] NPL Measurement Note No. 043, *Round-robin validation exercise for three structural test methods: open-hole compression, open-hole tension and pin-bearing*, 1999
- [7] ISO 13003, *Fibre-reinforced plastics — Determination of fatigue properties under cyclic loading conditions*
- [8] ASTM D7615/D7615M-11, *Standard Practice for Open Hole Fatigue Response of Polymer Matrix Composite Laminates*
- [9] ISO 527-5, *Plastics — Determination of tensile properties — Part 5: Test conditions for unidirectional fibre-reinforced plastic composites*
- [10] ISO 5725-1, *Accuracy (trueness and precision) of measurement methods and results — Part 1: General principles and definitions*
- [11] ISO 5725-2, *Accuracy (trueness and precision) of measurement methods and results — Part 2: Basic method for the determination of repeatability and reproducibility of a standard measurement method*

British Standards Institution (BSI)

BSI is the national body responsible for preparing British Standards and other standards-related publications, information and services.

BSI is incorporated by Royal Charter. British Standards and other standardization products are published by BSI Standards Limited.

About us

We bring together business, industry, government, consumers, innovators and others to shape their combined experience and expertise into standards-based solutions.

The knowledge embodied in our standards has been carefully assembled in a dependable format and refined through our open consultation process. Organizations of all sizes and across all sectors choose standards to help them achieve their goals.

Information on standards

We can provide you with the knowledge that your organization needs to succeed. Find out more about British Standards by visiting our website at bsigroup.com/standards or contacting our Customer Services team or Knowledge Centre.

Buying standards

You can buy and download PDF versions of BSI publications, including British and adopted European and international standards, through our website at bsigroup.com/shop, where hard copies can also be purchased.

If you need international and foreign standards from other Standards Development Organizations, hard copies can be ordered from our Customer Services team.

Subscriptions

Our range of subscription services are designed to make using standards easier for you. For further information on our subscription products go to bsigroup.com/subscriptions.

With **British Standards Online (BSOL)** you'll have instant access to over 55,000 British and adopted European and international standards from your desktop. It's available 24/7 and is refreshed daily so you'll always be up to date.

You can keep in touch with standards developments and receive substantial discounts on the purchase price of standards, both in single copy and subscription format, by becoming a **BSI Subscribing Member**.

PLUS is an updating service exclusive to BSI Subscribing Members. You will automatically receive the latest hard copy of your standards when they're revised or replaced.

To find out more about becoming a BSI Subscribing Member and the benefits of membership, please visit bsigroup.com/shop.

With a **Multi-User Network Licence (MUNL)** you are able to host standards publications on your intranet. Licences can cover as few or as many users as you wish. With updates supplied as soon as they're available, you can be sure your documentation is current. For further information, email bsmusales@bsigroup.com.

BSI Group Headquarters

389 Chiswick High Road London W4 4AL UK

Revisions

Our British Standards and other publications are updated by amendment or revision.

We continually improve the quality of our products and services to benefit your business. If you find an inaccuracy or ambiguity within a British Standard or other BSI publication please inform the Knowledge Centre.

Copyright

All the data, software and documentation set out in all British Standards and other BSI publications are the property of and copyrighted by BSI, or some person or entity that owns copyright in the information used (such as the international standardization bodies) and has formally licensed such information to BSI for commercial publication and use. Except as permitted under the Copyright, Designs and Patents Act 1988 no extract may be reproduced, stored in a retrieval system or transmitted in any form or by any means – electronic, photocopying, recording or otherwise – without prior written permission from BSI. Details and advice can be obtained from the Copyright & Licensing Department.

Useful Contacts:

Customer Services

Tel: +44 845 086 9001

Email (orders): orders@bsigroup.com

Email (enquiries): cservices@bsigroup.com

Subscriptions

Tel: +44 845 086 9001

Email: subscriptions@bsigroup.com

Knowledge Centre

Tel: +44 20 8996 7004

Email: knowledgecentre@bsigroup.com

Copyright & Licensing

Tel: +44 20 8996 7070

Email: copyright@bsigroup.com



...making excellence a habit.™