

BS ISO 12251:2011



BSI Standards Publication

Diesel engines — Clamp mounted CR fuel injectors — Mounting dimensions

bsi.

...making excellence a habit.™

National foreword

This British Standard is the UK implementation of ISO 12251:2011.

The UK participation in its preparation was entrusted to Technical Committee MCE/22, Engines for road vehicles.

A list of organizations represented on this committee can be obtained on request to its secretary.

This publication does not purport to include all the necessary provisions of a contract. Users are responsible for its correct application.

© BSI 2011

ISBN 978 0 580 64265 4

ICS 43.060.40

Compliance with a British Standard cannot confer immunity from legal obligations.

This British Standard was published under the authority of the Standards Policy and Strategy Committee on 31 March 2011.

Amendments issued since publication

Date	Text affected
------	---------------

INTERNATIONAL
STANDARD

BS ISO 12251:2011

ISO
12251

First edition
2011-02-01

**Diesel engines — Clamp mounted CR fuel
injectors — Mounting dimensions**

*Moteurs diesels — Injecteurs de combustible pour rampe commune
fixés par patte — Dimensions de montage*



Reference number
ISO 12251:2011(E)

© ISO 2010

PDF disclaimer

This PDF file may contain embedded typefaces. In accordance with Adobe's licensing policy, this file may be printed or viewed but shall not be edited unless the typefaces which are embedded are licensed to and installed on the computer performing the editing. In downloading this file, parties accept therein the responsibility of not infringing Adobe's licensing policy. The ISO Central Secretariat accepts no liability in this area.

Adobe is a trademark of Adobe Systems Incorporated.

Details of the software products used to create this PDF file can be found in the General Info relative to the file; the PDF-creation parameters were optimized for printing. Every care has been taken to ensure that the file is suitable for use by ISO member bodies. In the unlikely event that a problem relating to it is found, please inform the Central Secretariat at the address given below.



COPYRIGHT PROTECTED DOCUMENT

© ISO 2011

All rights reserved. Unless otherwise specified, no part of this publication may be reproduced or utilized in any form or by any means, electronic or mechanical, including photocopying and microfilm, without permission in writing from either ISO at the address below or ISO's member body in the country of the requester.

ISO copyright office
Case postale 56 • CH-1211 Geneva 20
Tel. + 41 22 749 01 11
Fax + 41 22 749 09 47
E-mail copyright@iso.org
Web www.iso.org

Published in Switzerland

Contents

Page

Foreword	iv
1 Scope	1
2 Symbols	1
3 General requirements	2
3.1 Clamp mounting arrangement	2
3.2 Injector guiding dimensions	3
3.3 Concentricity of the nozzle shaft	3
4 Dimensions and tolerances	5
4.1 Type A, clamp mounted CR fuel injectors with straight capnut	5
4.2 Type B, clamp mounted CR fuel injectors with stepped capnut	7
5 Other specifications	9
6 Designation	9

Foreword

ISO (the International Organization for Standardization) is a worldwide federation of national standards bodies (ISO member bodies). The work of preparing International Standards is normally carried out through ISO technical committees. Each member body interested in a subject for which a technical committee has been established has the right to be represented on that committee. International organizations, governmental and non-governmental, in liaison with ISO, also take part in the work. ISO collaborates closely with the International Electrotechnical Commission (IEC) on all matters of electrotechnical standardization.

International Standards are drafted in accordance with the rules given in the ISO/IEC Directives, Part 2.

The main task of technical committees is to prepare International Standards. Draft International Standards adopted by the technical committees are circulated to the member bodies for voting. Publication as an International Standard requires approval by at least 75 % of the member bodies casting a vote.

Attention is drawn to the possibility that some of the elements of this document may be the subject of patent rights. ISO shall not be held responsible for identifying any or all such patent rights.

ISO 12251 was prepared by Technical Committee ISO/TC 22, *Road vehicles*, Subcommittee SC 7, *Injection equipment and filters for use on road vehicles*.

Diesel engines — Clamp mounted CR fuel injectors — Mounting dimensions

1 Scope

This International Standard specifies dimensional requirements for clamp mounted CR fuel injectors and their corresponding cylinder head features in diesel engines.

According to the injector nozzle capnut, the clamp mounted CR fuel injectors can be divided into two types:

- a) Type A, where the nozzle capnut is straight (see Figure 4).
- b) Type B, where the nozzle capnut is stepped (see Figure 5).

Each clamp mounted CR fuel injector type is subdivided by a series of different sizes.

NOTE This differentiation corresponds to the relationship between the two guide diameters of the clamp mounted CR fuel injectors.

2 Symbols

For the purposes of this document, the following symbols apply:

D_1 = injector shaft diameter

D_2 = injector upper guide diameter

D_3 = capnut diameter

D_4 = injector lower guide diameter

D_5 = injector nozzle shaft diameter

d_6 = bore for upper guide diameter

d_7 = bore for lower guide diameter

d_8 = bore for nozzle shaft

l_1 = overall injector length

l_2 = distance between sealing face and upper guide diameter of injector

l_3 = overlapping (upper guide diameter/cylinder head)

l_4 = injector clamping width

l_5 = clamp width

l_6 = injector clamping height

l_7 = distance between sealing face and datum B on injector

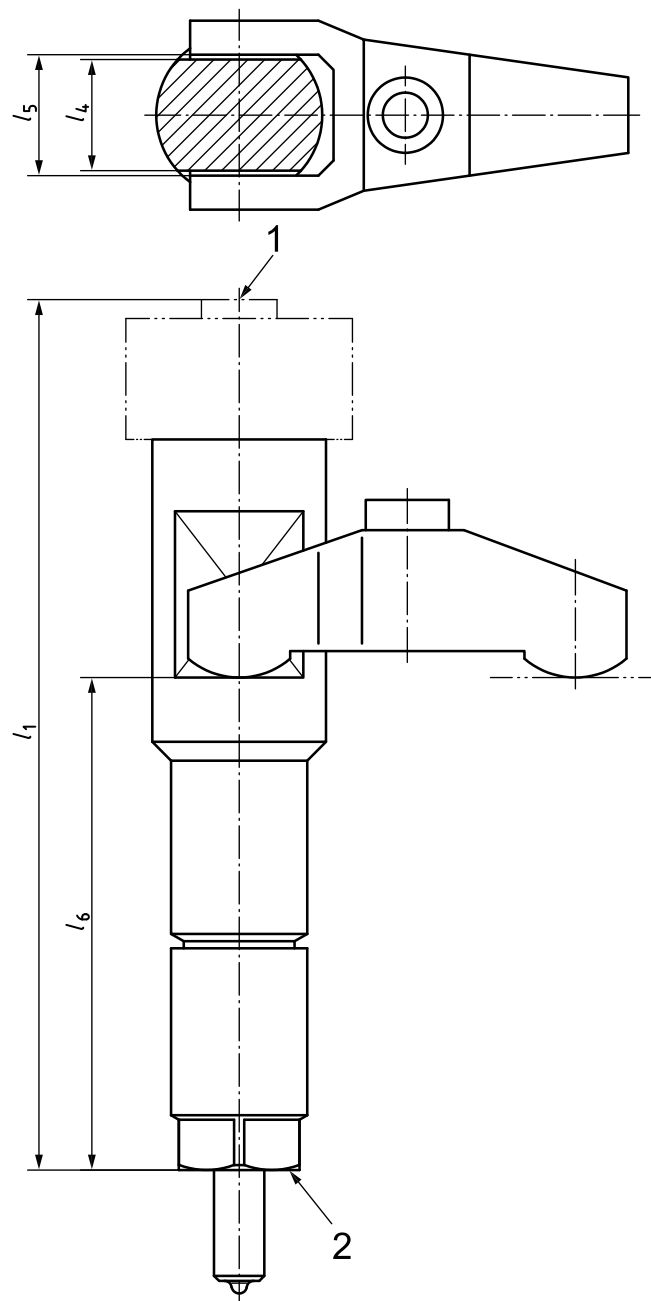
l_8 = distance between sealing face and datum C on injector

NOTE l_7 and l_8 are dependent on the cylinder head design as agreed between injector manufacturer and customer.

3 General requirements

3.1 Clamp mounting arrangement

A typical clamp mounting arrangement is shown in Figure 1 (schematically).



Key

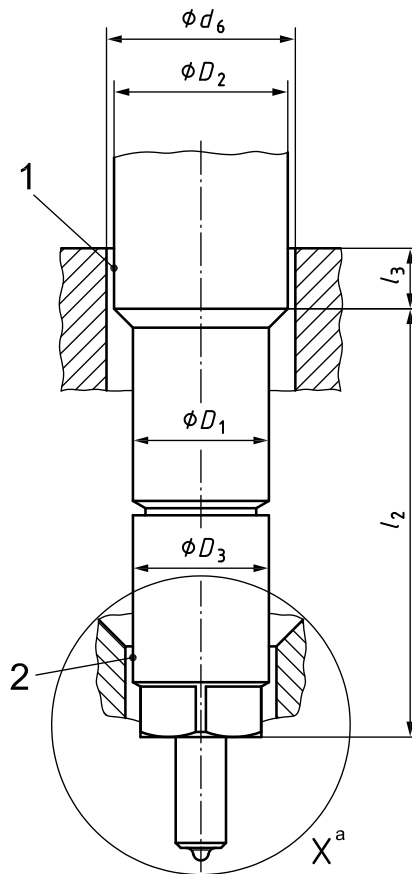
- l_1 overall injector length
- l_6 injector clamping height
- 1 top of injector (e.g. hydraulic connection)
- 2 injector sealing face

NOTE The injector clamping height varies depending on engine application and is agreed between manufacturer and customer.

Figure 1 — Typical injector clamp mounting arrangement

3.2 Injector guiding dimensions

The important injector guiding dimensions are shown in Figure 2 (schematically).



Key

- l_3 overlapping at upper guide (upper guide diameter/cylinder head)
- 1 upper guide
- 2 lower guide
- ^a See Figures 4 and 5 for details.

Figure 2 — Typical injector guiding arrangement

3.3 Concentricity of the nozzle shaft

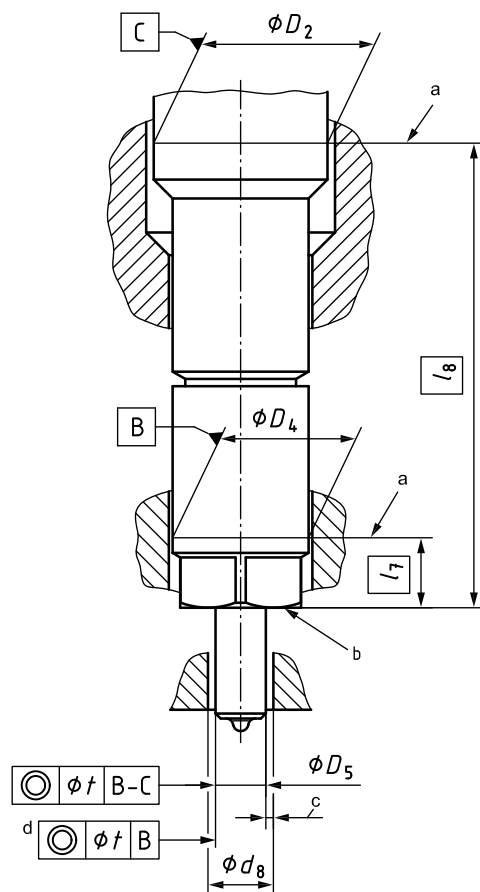
The determination of the concentricity, ϕ_c , of the nozzle shaft relative to the axis of the two guide diameters, ϕD_2 and ϕD_4 , is shown in Figure 3 (schematically).

The concentricity, ϕ_c , is the result of the form and position tolerances of the two guide diameters, based on the production conditions, and is specified by the injector manufacturer by simultaneously taking into consideration the compatibility with the dimensional structure of the cylinder head.

The purpose of this concentricity is to determine the position of the nozzle shaft (centre axis of ϕD_5) related to the cylinder head bore, ϕd_8 ; this is important in order to ensure that the nozzle shaft does not interfere with the bore in the cylinder head (see Tables 2 and 4, table footnote c, and Figure 3, key item c).

Requirements for measurement of the concentricity, ϕt :

- the datum B position (l_7) shall be agreed between injector manufacturer and customer;
- the datum C position (l_8) depends on the distance between the two guides and the overlapping (see Figure 2: l_2 and l_3) and shall be agreed between injector manufacturer and customer.



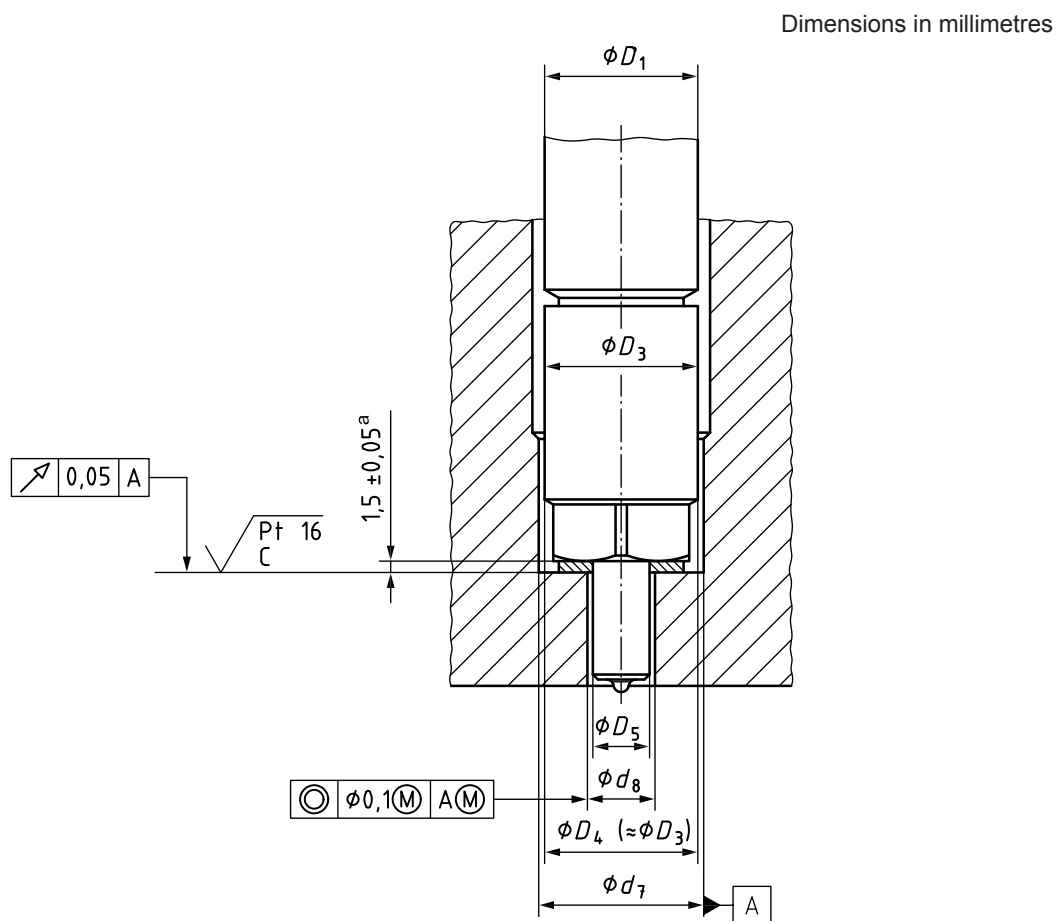
- a Datum positions (at the two guide diameters).
- b Injector sealing face.
- c Required gap between the nozzle shaft and the bore in the cylinder head (no interference).
- d For single guide diameter injector types.

Figure 3 — Concentricity ϕD_5 of the nozzle shaft

4 Dimensions and tolerances

4.1 Type A, clamp mounted CR fuel injectors with straight capnut

Figure 4 shows the injector and nozzle dimensions and the corresponding cylinder head dimensions.



^a Sealing washer thickness may vary depending on engine manufacturer's requirements.

Figure 4 — Injector and cylinder head dimensions, Type A (detail X of Figure 2)

The specified clamp mounted CR fuel injector and nozzle dimensions and the corresponding cylinder head bore dimensions are given in Tables 1 and 2.

Table 1 — Clamp mounted CR fuel injector dimensions, Type A

Dimensions in millimetres

Size	D_1		D_2^a		D_3		D_4		D_5		l_1^b nom.	l_2^a min.	l_4^b	
	A.1	16,9	+0 -0,13	16,9	+0 -0,13	17	+0,10 -0,15	17	+0 -0,11	7	+0,20 -0,15	137 to 200	40	10,8
A.2	17	+0 -0,15	17,5	+0,20 -0,15			137 to 200					50	13	
A.3	19	+0 -0,20	19,5	+0,10 -0,15			121 to 210					40	15 or 17	
A.4	19	+0 -0,15	19,5	+0,20 -0,15			150 to 200					50	12,8, 13, 14, 15 or 17	
A.5	21	+0 -0,10	24,25	+0 -0,13	24,1	+0 -0,13	24,1	+0 -0,13	9,2	+0 -0,10	164 to 207	55	13, 17, 20 or 27	

^a See Figure 2.
^b See Figure 1.

Table 2 — Cylinder head bore dimensions, Type A

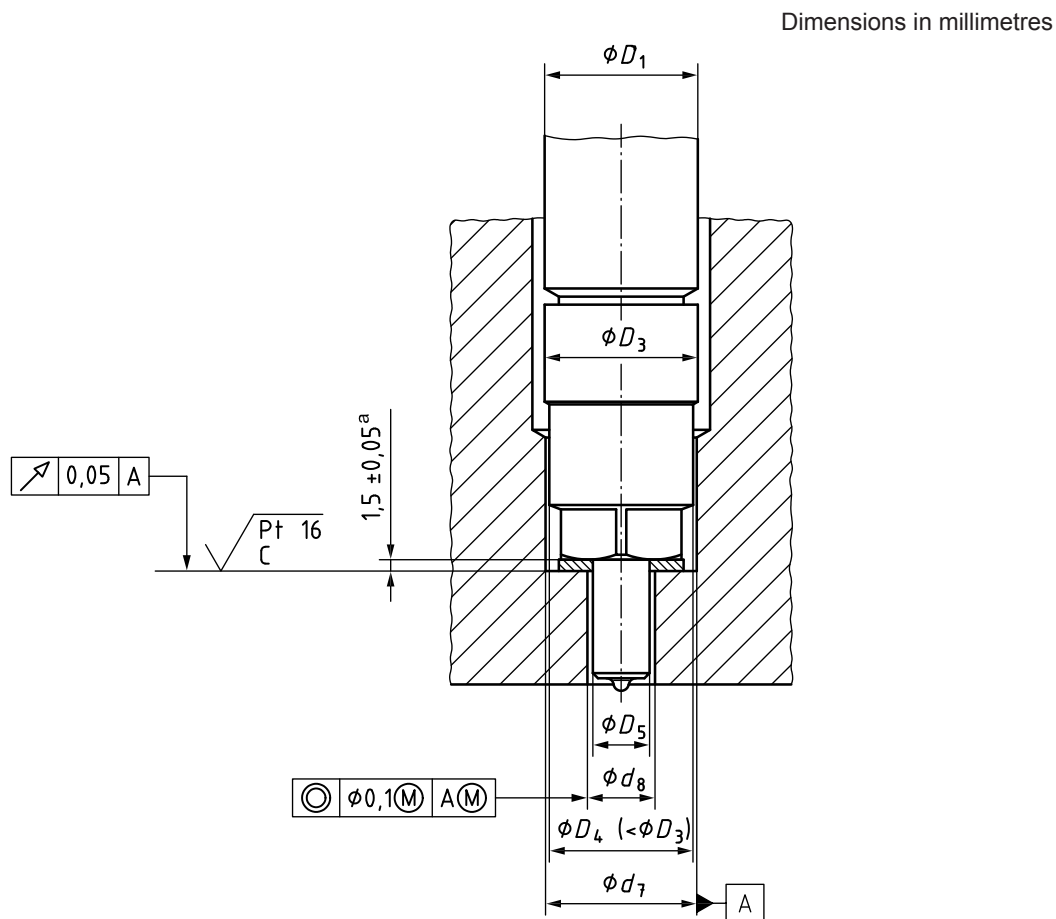
Dimensions in millimetres

Size	d_6^a		d_7		d_8^c nom.	l_3^{ad} nom.	l_5^{be}	
	A.1	17	+0,07 +0,02	17	+0,07 +0,02	7,6 to 8,1	5 to 10	10,85
A.2	17,5	7,6 to 7,8				13,05		
A.3	19,5	7,6 to 8,1				15,05 or 17,05		
A.4	19,5	7,6 to 7,8				12,85, 13,05, 14,05, 15,05 or 17,05		
A.5	24,3	+0,10 +0	21,8	+0,20 +0	9,5 to 9,7	13,1, 17,1, 20,1 or 27,1	+0,30 +0	

^a See Figure 2.
^b See Figure 1.
^c To ensure that the nozzle shaft does not interfere with the bore in the cylinder head, the maximum value of the nozzle shaft diameter, the maximum axis tilt and the bias of the injector shall be taken into account.
^d Typical dimensions; other dimensions are allowable as agreed between manufacturer and customer.
^e l_5 is an important dimension and needs to be closely controlled in order to guarantee the orientation of the injector.

4.2 Type B, clamp mounted CR fuel injectors with stepped capnut

Figure 5 shows the injector and nozzle dimensions and their corresponding cylinder head dimensions.



^a Sealing washer thickness may vary depending on engine manufacturer's requirements.

Figure 5 — Injector and cylinder head dimensions, Type B (detail X of Figure 2)

The specified clamp mounted CR fuel injector and nozzle dimensions and the corresponding cylinder head bore dimensions are given in Tables 3 and 4.

Table 3 — Clamp mounted CR fuel injector dimensions, Type B

Dimensions in millimetres

Size	D_1		D_2^a		D_3		D_4		D_5		l_1^b nom.	l_2^a min.	l_4^b	
	B.1	19	+0 -0,15	19,5	+0 -0,13	18,9	+0,20 -0,15	17	+0 -0,11	7	+0,20 -0,15	150 to 200	50	12,8, 13, 14, 15, 17 or 19
B.2	19	+0 -0,20	19,5	+0 -0,13	18,9	+0,20 -0,15	121 to 210					40	12, 12,8, 13, 15 or 17	
B.3	19	+0 -0,15	20,3	+0 -0,13	19	+0,20 -0,15	162 to 200					50	15, 17 or 19	
B.4	19	+0 -0,30	20,3	+0 -0,20	19,2	+0 -0,20	166 to 210					68	12, 12,8, 13, 15, 17, 20 or 27	
B.5	21	+0 -0,15	21,5	+0 -0,13	18,9	+0,20 -0,15	150 to 200					50	13 or 15	

^a See Figure 2.
^b See Figure 1.

Table 4 — Cylinder head bore dimensions, Type B

Dimensions in millimetres

Size	d_6^a		d_7		d_8^c nom.	l_3^{ad} nom.	l_5^{be}	
	B.1	19,5	+0,07 +0,02	17	+0,07 +0,02	7,6 to 7,8	5 to 10	12,85, 13,05, 14,05, 15,05, 17,05 or 19,05
B.2	19,5	+0,07 +0,02	7,6 to 8,1			12,05, 12,85, 13,05, 15,05 or 17,05		+0,10 +0
B.3	20,3	+0,07 +0,02	7,6 to 7,8			15,05, 17,05 or 19,05		+0,10 +0
B.4	20,3	+0,18 +0,13	7,6 to 7,8			12,1, 12,9, 13,1, 15,1, 17,1, 20,1 or 27,1		+0,30 +0
B.5	21,5	+0,07 +0,02	7,6 to 7,8			13,1 or 15,1		+0,10 +0

^a See Figure 2.
^b See Figure 1.
^c To ensure that the nozzle shaft does not interfere with the bore in the cylinder head, the maximum value of the nozzle shaft diameter, the maximum axis tilt and the bias of the injector shall be taken into account.
^d Typical dimensions; other dimensions are allowable as agreed between manufacturer and customer.
^e l_5 is an important dimension and needs to be closely controlled in order to guarantee the orientation of the injector.

5 Other specifications

Dimensions and requirements not given in this International Standard are left to the discretion of the manufacturer in consultation with the engine manufacturer.

6 Designation

Clamp mounted CR fuel injectors that meet the requirements of this International Standard shall be designated as follows in the order given:

- a) the term "Injector";
- b) reference to this International Standard;
- c) injector size (including the type);
- d) separated by a hyphen: overall injector length;
- e) separated by a hyphen: clamping width.

EXAMPLE 1

A clamp mounted CR fuel injector of type A, of size A.4, with an overall injector length $l_1 = 165$ and a clamping width $l_4 = 15$ is designated:

Injector ISO 12251 A.4-165-15

EXAMPLE 2

A clamp mounted CR fuel injector of type B, of size B.1, with an overall injector length $l_1 = 195$ and a clamping width $l_4 = 12,8$ is designated:

Injector ISO 12251 B.1-195-12,8

British Standards Institution (BSI)

BSI is the national body responsible for preparing British Standards and other standards-related publications, information and services.

BSI is incorporated by Royal Charter. British Standards and other standardization products are published by BSI Standards Limited.

About us

We bring together business, industry, government, consumers, innovators and others to shape their combined experience and expertise into standards-based solutions.

The knowledge embodied in our standards has been carefully assembled in a dependable format and refined through our open consultation process. Organizations of all sizes and across all sectors choose standards to help them achieve their goals.

Information on standards

We can provide you with the knowledge that your organization needs to succeed. Find out more about British Standards by visiting our website at bsigroup.com/standards or contacting our Customer Services team or Knowledge Centre.

Buying standards

You can buy and download PDF versions of BSI publications, including British and adopted European and international standards, through our website at bsigroup.com/shop, where hard copies can also be purchased.

If you need international and foreign standards from other Standards Development Organizations, hard copies can be ordered from our Customer Services team.

Subscriptions

Our range of subscription services are designed to make using standards easier for you. For further information on our subscription products go to bsigroup.com/subscriptions.

With **British Standards Online (BSOL)** you'll have instant access to over 55,000 British and adopted European and international standards from your desktop. It's available 24/7 and is refreshed daily so you'll always be up to date.

You can keep in touch with standards developments and receive substantial discounts on the purchase price of standards, both in single copy and subscription format, by becoming a **BSI Subscribing Member**.

PLUS is an updating service exclusive to BSI Subscribing Members. You will automatically receive the latest hard copy of your standards when they're revised or replaced.

To find out more about becoming a BSI Subscribing Member and the benefits of membership, please visit bsigroup.com/shop.

With a **Multi-User Network Licence (MUNL)** you are able to host standards publications on your intranet. Licences can cover as few or as many users as you wish. With updates supplied as soon as they're available, you can be sure your documentation is current. For further information, email bsmusales@bsigroup.com.

BSI Group Headquarters

389 Chiswick High Road London W4 4AL UK

Revisions

Our British Standards and other publications are updated by amendment or revision.

We continually improve the quality of our products and services to benefit your business. If you find an inaccuracy or ambiguity within a British Standard or other BSI publication please inform the Knowledge Centre.

Copyright

All the data, software and documentation set out in all British Standards and other BSI publications are the property of and copyrighted by BSI, or some person or entity that owns copyright in the information used (such as the international standardization bodies) and has formally licensed such information to BSI for commercial publication and use. Except as permitted under the Copyright, Designs and Patents Act 1988 no extract may be reproduced, stored in a retrieval system or transmitted in any form or by any means – electronic, photocopying, recording or otherwise – without prior written permission from BSI. Details and advice can be obtained from the Copyright & Licensing Department.

Useful Contacts:

Customer Services

Tel: +44 845 086 9001

Email (orders): orders@bsigroup.com

Email (enquiries): cservices@bsigroup.com

Subscriptions

Tel: +44 845 086 9001

Email: subscriptions@bsigroup.com

Knowledge Centre

Tel: +44 20 8996 7004

Email: knowledgecentre@bsigroup.com

Copyright & Licensing

Tel: +44 20 8996 7070

Email: copyright@bsigroup.com



...making excellence a habit.™