

Cranes — Measurement of the mass of a crane and its components

ICS 53.020.20

National foreword

This British Standard was published by BSI. It is the UK implementation of ISO 11629:2004.

The UK participation in its preparation was entrusted to Technical Committee MHE/3, Cranes and derricks.

A list of organizations represented on MHE/3 can be obtained on request to its secretary.

This publication does not purport to include all the necessary provisions of a contract. Users are responsible for its correct application.

Compliance with a British Standard cannot confer immunity from legal obligations.

This British Standard was published under the authority of the Standards Policy and Strategy Committee on 29 December 2006

© BSI 2006

ISBN 0 580 49895 6

Amendments issued since publication

Amd. No.	Date	Comments

INTERNATIONAL
STANDARD

ISO
11629

First edition
2004-11-15

**Cranes — Measurement of the mass of a
crane and its components**

*Appareils de levage à charge suspendue — Mesurage de la masse
d'une grue et de ses composants*



Reference number
ISO 11629:2004(E)

Contents

Page

Foreword	iv
1 Scope	1
2 Normative references	1
3 Terms and definitions	1
4 Apparatus and its accuracy	1
5 Measuring the mass of the crane as a whole and/or the crane components	2
6 Measurement report	3
Annex A (informative) Examples to illustrate how the mass of a crane as a whole and/or its components should be measured	4
Bibliography	6

Foreword

ISO (the International Organization for Standardization) is a worldwide federation of national standards bodies (ISO member bodies). The work of preparing International Standards is normally carried out through ISO technical committees. Each member body interested in a subject for which a technical committee has been established has the right to be represented on that committee. International organizations, governmental and non-governmental, in liaison with ISO, also take part in the work. ISO collaborates closely with the International Electrotechnical Commission (IEC) on all matters of electrotechnical standardization.

International Standards are drafted in accordance with the rules given in the ISO/IEC Directives, Part 2.

The main task of technical committees is to prepare International Standards. Draft International Standards adopted by the technical committees are circulated to the member bodies for voting. Publication as an International Standard requires approval by at least 75 % of the member bodies casting a vote.

Attention is drawn to the possibility that some of the elements of this document may be the subject of patent rights. ISO shall not be held responsible for identifying any or all such patent rights.

ISO 11629 was prepared by Technical Committee ISO/TC 96, *Cranes*, Subcommittee SC 4, *Test methods*.

Cranes — Measurement of the mass of a crane and its components

1 Scope

This International Standard sets forth basic procedures for measuring the mass of a crane as a whole and/or of its components. This International Standard was prepared in addition to ISO 4310 and covers the types of cranes as defined in ISO 4306-1.

2 Normative references

The following referenced documents are indispensable for the application of this document. For dated references, only the edition cited applies. For undated references, the latest edition of the referenced document (including any amendments) applies.

ISO 4306-1, *Cranes — Vocabulary — Part 1: General*

ISO 4310, *Cranes — Test code and procedures*

ISO 9373, *Cranes and related equipment — Accuracy requirements for measuring parameters during testing*

3 Terms and definitions

For the purposes of this document, the terms and definitions given in ISO 4306-1 and the following apply.

3.1 apparatus

complete set of equipment and devices required to determine the mass of a crane as a whole and/or of its components

3.2 simple measurement

measurement for which the result is read off one measuring device or is the sum of readings of several measuring devices operating simultaneously

3.3 complex measurement

measurement for which the result is the sum of the readings of several measuring devices used sequentially

4 Apparatus and its accuracy

4.1 The following apparatus may be used to measure the mass of a crane as a whole and/or of its components:

4.1.1 Scale.

4.1.2 Dynamometers, compression or extension.

4.1.3 Supports, knife-edge.

4.1.4 Decking.

4.1.5 Level.

4.1.6 Auxiliary hoist.

4.1.7 Slings, wire rope or chain.

4.2 Measuring apparatus used for measuring the mass of a crane as a whole and/or of its components shall be selected in accordance with the accuracy requirements in ISO 9373 and in compliance with national specifications.

4.3 Either simple or complex measurement of the mass of a crane and/or of its components may be used, but simple measurement is preferable.

5 Measuring the mass of the crane as a whole and/or the crane components

5.1 The crane, prepared for measuring the mass as a whole or disassembled into its individual components, shall have the equipment required for it to be used as specified in the manufacturer's instructions.

5.2 The mass of the crane as a whole and/or its components shall be measured by either simple or complex measurements.

The reaction forces are measured at points of support by measuring devices (Figures A.1 to A.4).

5.3 When measuring as specified in 5.2, the crane and/or its components shall be placed on the measuring devices as follows.

- All measured loads shall be vertical with no induced horizontal forces imparted on the measuring apparatus (Figures A.1 to A.3).
- The point of support shall be in the centre of the measuring apparatus (Figure A.1).
- The suspension line shall go through the centre of the mass being measured (Figure A.2).
- Decking and knife-edge supports should be placed at the supporting points for a more accurate load transfer from the mass being measured to the measuring apparatus (Figure A.3).
- For large cranes and/or components, the mass to be measured may be placed sequentially on measuring apparatus with the support surfaces (the right and left or the front and rear side), while the other side is placed on a firm surface next to measuring apparatus (Figure A.4).

5.4 Each measurement result shall be reduced by the mass of the decking, knife-edge supports, slings and other arrangements, as appropriate.

6 Measurement report

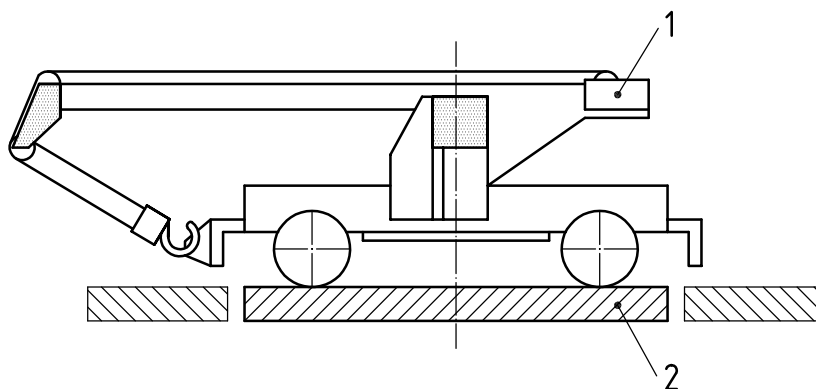
The report on the measurements of the mass of the crane as a whole and/or its components shall include the following data:

- crane and/or component type;
- name of the manufacturer;
- date of the measurement;
- description of the crane and/or its component;
- conditions of measurement (see section on test conditions as defined in ISO 4310);
- name of the person supervising the testing.

The results of measuring the mass of the crane and/or its components should be tabulated.

Annex A (informative)

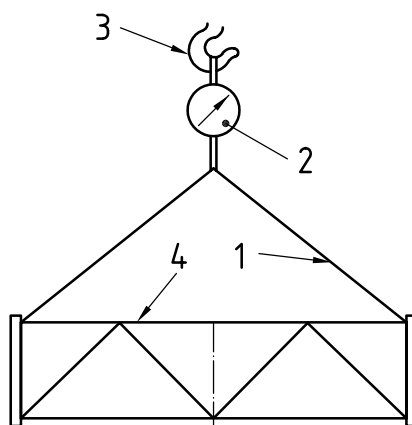
Examples to illustrate how the mass of a crane as a whole and/or its components should be measured



Key

- 1 crane
- 2 scale platform

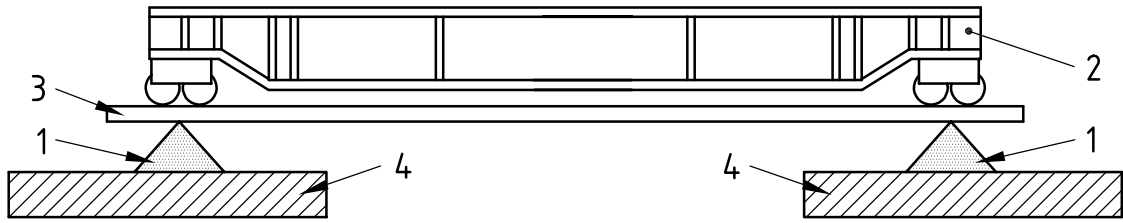
Figure A.1 — Measuring the mass of a crane (mobile) as a whole



Key

- 1 slings
- 2 dynamometer
- 3 hoist hook
- 4 crane component

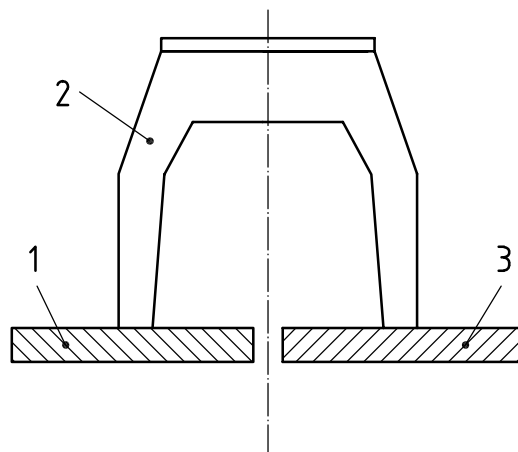
Figure A.2 — Measuring the mass of a crane component with a dynamometer



Key

- 1 knife-edge support
- 2 crane component
- 3 decking
- 4 compression dynamometer

Figure A.3 — Measuring the mass of a crane component with compression dynamometers working simultaneously



Key

- 1 supporting surface
- 2 crane component
- 3 compression dynamometer

Figure A.4 — Measuring the mass of a crane component with compression dynamometer working sequentially

Bibliography

- [1] ISO 7363, *Cranes and lifting appliances — Technical characteristics and acceptance documents*

BSI — British Standards Institution

BSI is the independent national body responsible for preparing British Standards. It presents the UK view on standards in Europe and at the international level. It is incorporated by Royal Charter.

Revisions

British Standards are updated by amendment or revision. Users of British Standards should make sure that they possess the latest amendments or editions.

It is the constant aim of BSI to improve the quality of our products and services. We would be grateful if anyone finding an inaccuracy or ambiguity while using this British Standard would inform the Secretary of the technical committee responsible, the identity of which can be found on the inside front cover.
Tel: +44 (0)20 8996 9000. Fax: +44 (0)20 8996 7400.

BSI offers members an individual updating service called PLUS which ensures that subscribers automatically receive the latest editions of standards.

Buying standards

Orders for all BSI, international and foreign standards publications should be addressed to Customer Services. Tel: +44 (0)20 8996 9001.
Fax: +44 (0)20 8996 7001. Email: orders@bsi-global.com. Standards are also available from the BSI website at <http://www.bsi-global.com>.

In response to orders for international standards, it is BSI policy to supply the BSI implementation of those that have been published as British Standards, unless otherwise requested.

Information on standards

BSI provides a wide range of information on national, European and international standards through its Library and its Technical Help to Exporters Service. Various BSI electronic information services are also available which give details on all its products and services. Contact the Information Centre.
Tel: +44 (0)20 8996 7111. Fax: +44 (0)20 8996 7048. Email: info@bsi-global.com.

Subscribing members of BSI are kept up to date with standards developments and receive substantial discounts on the purchase price of standards. For details of these and other benefits contact Membership Administration.
Tel: +44 (0)20 8996 7002. Fax: +44 (0)20 8996 7001.
Email: membership@bsi-global.com.

Information regarding online access to British Standards via British Standards Online can be found at <http://www.bsi-global.com/bsonline>.

Further information about BSI is available on the BSI website at <http://www.bsi-global.com>.

Copyright

Copyright subsists in all BSI publications. BSI also holds the copyright, in the UK, of the publications of the international standardization bodies. Except as permitted under the Copyright, Designs and Patents Act 1988 no extract may be reproduced, stored in a retrieval system or transmitted in any form or by any means – electronic, photocopying, recording or otherwise – without prior written permission from BSI.

This does not preclude the free use, in the course of implementing the standard, of necessary details such as symbols, and size, type or grade designations. If these details are to be used for any other purpose than implementation then the prior written permission of BSI must be obtained.

Details and advice can be obtained from the Copyright & Licensing Manager.
Tel: +44 (0)20 8996 7070. Fax: +44 (0)20 8996 7553.
Email: copyright@bsi-global.com.