

BS ISO 10332:2010



BSI Standards Publication

Non-destructive testing of steel tubes — Automated ultrasonic testing of seamless and welded (except submerged arc-welded) steel tubes for verification of hydraulic leak-tightness

NO COPYING WITHOUT BSI PERMISSION EXCEPT AS PERMITTED BY COPYRIGHT LAW

raising standards worldwide[™]



National foreword

This British Standard is the UK implementation of ISO 10332:2010.

The UK participation in its preparation was entrusted to Technical Committee ISE/110, Steel Tubes, and Iron and Steel Fittings.

A list of organizations represented on this committee can be obtained on request to its secretary.

This publication does not purport to include all the necessary provisions of a contract. Users are responsible for its correct application.

© BSI 2010

ISBN 978 0 580 59222 5

ICS 23.040.10; 77.040.20; 77.140.75

Compliance with a British Standard cannot confer immunity from legal obligations.

This British Standard was published under the authority of the Standards Policy and Strategy Committee on 31 October 2010.

Amendments issued since publication

Date	Text affected
------	---------------

INTERNATIONAL STANDARD

BS ISO 10332:2010

ISO
10332

Second edition
2010-10-15

Non-destructive testing of steel tubes — Automated ultrasonic testing of seamless and welded (except submerged arc-welded) steel tubes for verification of hydraulic leak-tightness

*Essais non destructifs des tubes en acier — Contrôle automatisé par
ultrasons pour vérification de l'étanchéité hydraulique des tubes en
acier sans soudure et soudés (sauf à l'arc immergé)*



Reference number
ISO 10332:2010(E)

© ISO 2010

PDF disclaimer

This PDF file may contain embedded typefaces. In accordance with Adobe's licensing policy, this file may be printed or viewed but shall not be edited unless the typefaces which are embedded are licensed to and installed on the computer performing the editing. In downloading this file, parties accept therein the responsibility of not infringing Adobe's licensing policy. The ISO Central Secretariat accepts no liability in this area.

Adobe is a trademark of Adobe Systems Incorporated.

Details of the software products used to create this PDF file can be found in the General Info relative to the file; the PDF-creation parameters were optimized for printing. Every care has been taken to ensure that the file is suitable for use by ISO member bodies. In the unlikely event that a problem relating to it is found, please inform the Central Secretariat at the address given below.



COPYRIGHT PROTECTED DOCUMENT

© ISO 2010

All rights reserved. Unless otherwise specified, no part of this publication may be reproduced or utilized in any form or by any means, electronic or mechanical, including photocopying and microfilm, without permission in writing from either ISO at the address below or ISO's member body in the country of the requester.

ISO copyright office
Case postale 56 • CH-1211 Geneva 20
Tel. + 41 22 749 01 11
Fax + 41 22 749 09 47
E-mail copyright@iso.org
Web www.iso.org

Published in Switzerland

Contents

Page

Foreword	iv
1 Scope	1
2 Normative references	1
3 Terms and definitions	1
4 General requirements	2
5 Method of test	3
6 Reference tube	3
6.1 General	3
6.2 Types of reference notches	3
6.3 Dimensions of reference notches	4
6.3.1 Width, w	4
6.3.2 Depth, d	4
6.3.3 Notch length	4
6.4 Reference hole	4
6.5 Verification of the reference standards	5
7 Equipment calibration and checking	5
7.1 General	5
7.2 Adjustment of the trigger/alarm level	5
7.3 Calibration check and re-calibration	5
8 Acceptance	6
9 Test method	6
Annex A (normative) Manual/semi-automated testing of untested ends and suspected areas	7

Foreword

ISO (the International Organization for Standardization) is a worldwide federation of national standards bodies (ISO member bodies). The work of preparing International Standards is normally carried out through ISO technical committees. Each member body interested in a subject for which a technical committee has been established has the right to be represented on that committee. International organizations, governmental and non-governmental, in liaison with ISO, also take part in the work. ISO collaborates closely with the International Electrotechnical Commission (IEC) on all matters of electrotechnical standardization.

International Standards are drafted in accordance with the rules given in the ISO/IEC Directives, Part 2.

The main task of technical committees is to prepare International Standards. Draft International Standards adopted by the technical committees are circulated to the member bodies for voting. Publication as an International Standard requires approval by at least 75 % of the member bodies casting a vote.

Attention is drawn to the possibility that some of the elements of this document may be the subject of patent rights. ISO shall not be held responsible for identifying any or all such patent rights.

ISO 10332 was prepared by Technical Committee ISO/TC 17, *Steel*, Subcommittee SC 19, *Technical delivery conditions for steel tubes for pressure purposes*.

This second edition cancels and replaces the first edition (ISO 10332:1994), which has been technically revised.

Non-destructive testing of steel tubes — Automated ultrasonic testing of seamless and welded (except submerged arc-welded) steel tubes for verification of hydraulic leak-tightness

1 Scope

This International Standard specifies requirements for automated ultrasonic shear-wave (generated by single element probes or the phased-array technique) testing of seamless and welded (except submerged arc-welded) steel tubes, for verification of hydraulic leak-tightness.

The testing technique is applied for the detection of predominantly longitudinal imperfections.

Where applicable, Lamb-wave testing may be applied at the discretion of the manufacturer.

This International Standard is applicable to the inspection of tubes with an outside diameter greater than or equal to 10 mm, and with an outside diameter-to-thickness ratio greater than or equal to 5.

2 Normative references

The following referenced documents are indispensable for the application of this document. For dated references, only the edition cited applies. For undated references, the latest edition of the referenced document (including any amendments) applies.

ISO 5577, *Non-destructive testing — Ultrasonic inspection — Vocabulary*

ISO 9712, *Non-destructive testing — Qualification and certification of personnel*

ISO 11484, *Steel products — Employer's qualification system for non-destructive testing (NDT) personnel*

3 Terms and definitions

For the purposes of this document, the terms and definitions given in ISO 5577, ISO 11484 and the following apply.

3.1

reference standard

standard for the calibration of non-destructive testing equipment

EXAMPLE Drill hole(s), notch(es), recess(es).

3.2

reference tube

tube or length of tube containing the reference standard(s)

3.3

reference sample

sample containing the reference standard(s)

EXAMPLE Segment of tube/plate/strip.

NOTE Only the term "reference tube" is used in this International Standard; it also covers "reference samples".

3.4 tube

long hollow product, open at both ends, of any cross-sectional shape

3.5 seamless tube

tube made by piercing a solid product to obtain a tube hollow, which is further processed, either hot or cold, into its final dimensions

3.6 welded tube

tube made by forming a hollow profile from a flat product and welding adjacent edges together and which may be further processed, either hot or cold, into its final dimensions

3.7 submerged arc welded tube (SAW)

tube made by forming, either hot or cold, a hollow profile from strip or plate and welding the adjacent edges together, without pressure, by addition of filler metal

NOTE 1 The adjacent edges and the filler metal are heated to welding temperature by an arc generated by the resistance to the passage of an electric current. The arc generated and the molten metal are protected from atmospheric contamination by the presence of a layer of flux.

NOTE 2 The tubes may have one or two longitudinal seam welds (SAWL) or one helical seam weld (SAWH) with at least one pass on the inside of the tube and at least one pass on the outside of the tube.

3.8 manufacturer

organization that manufactures products in accordance with the relevant standard(s) and declares the compliance of the delivered products with all applicable provisions of the relevant standard(s)

3.9 agreement

contractual arrangement between the manufacturer and purchaser at the time of enquiry and order

4 General requirements

4.1 Unless otherwise specified by product standards or agreed between the purchaser and manufacturer, the ultrasonic testing shall be carried out on tubes after completion of all the primary production-process operations, such as rolling, heat treating, cold and hot working, sizing, straightening, etc.

4.2 The tubes to be tested shall be sufficiently straight to ensure the validity of the test. The surfaces shall be sufficiently free from foreign matter which would interfere with the validity of the test.

4.3 This inspection shall be carried out by suitable trained operators qualified in accordance with ISO 9712, ISO 11484 or equivalent and supervised by competent personnel nominated by the manufacturer. In the case of third-party inspection, this shall be agreed between the purchaser and the manufacturer.

The operating authorization issued by the employer shall be in accordance with a written procedure. Non-destructive testing operations shall be authorized by a Level 3 non-destructive testing individual approved by the employer.

NOTE The definition of Levels 1, 2 and 3 can be found in appropriate standards, e.g. ISO 9712 and ISO 11484.

5 Method of test

5.1 The tubes shall be tested by using an ultrasonic shear-wave technique or Lamb-wave technique, if applicable, for the detection of predominantly longitudinal imperfections.

5.2 During testing, the tubes and the transducer assembly shall be moved relative to each other so that the whole of the tube surface is scanned, with coverage calculated on the dimension of the transducer(s). The relative speed of movement during testing shall not vary by more than 10 %. It is recognized that there may be a short length at both tube ends which cannot be tested. Any untested ends shall be dealt with in accordance with the requirements of the appropriate product standard (see also Annex A).

In the case of electro-welded (EW) tubes, excluding welded stretch-reduced tubes, by agreement between the purchaser and manufacturer, verification of hydraulic leak-tightness of the weld zone only is permitted. In this case, the transducer assembly shall be correctly aligned with the weld seam so that the whole length of the weld seam is scanned.

5.3 During testing, the tubes shall be scanned in two opposing directions of beam travel, unless otherwise agreed between the purchaser and manufacturer.

5.4 For the detection of longitudinal imperfections, the maximum width of each individual transducer measured parallel to the major axis of the tube, shall be 25 mm.

When using the Lamb-wave technique or phased-array technique, the maximum length of the transducer/active aperture shall be limited to 35 mm.

5.5 The ultrasonic test frequency of transducers to be used shall be in the range of 1 MHz to 15 MHz for shear-wave technique and in the range of 0,3 MHz to 1 MHz for the Lamb-wave technique, depending on the product condition and properties, the thickness, and the surface finishing of tubes under examination.

5.6 The equipment shall be capable of classifying tubes as either acceptable or suspect by means of an automated trigger/alarm level combined with a marking and/or sorting system.

6 Reference tube

6.1 General

6.1.1 The reference standards defined in this International Standard are convenient for the calibration of non-destructive testing equipment. The dimensions of these standards should not be construed as the minimum size of imperfection detectable by such equipment.

6.1.2 The ultrasonic equipment shall be calibrated using a longitudinal reference notch on the outside and inside surfaces or a reference hole drilled radially through the full thickness of a reference tube. The internal notch shall not be used when the internal diameter of the tube is less than 15 mm, unless otherwise agreed between the purchaser and the manufacturer.

6.1.3 The reference tubes shall have the same nominal diameter and thickness and the same surface finish and delivery condition (e.g. as-rolled, normalized, quenched and tempered) as the tubes to be tested, and shall have similar acoustic properties (for example, sound velocity, attenuation coefficient).

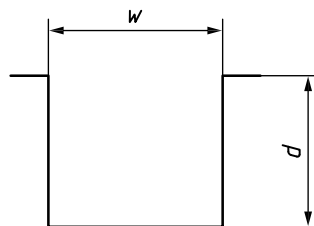
6.1.4 In order to obtain clearly distinguishable signals, the reference standard(s) shall be sufficiently separated from the ends of the reference tubes and from each other.

6.2 Types of reference notches

6.2.1 The reference notches shall lie parallel to the major axis of the reference tube.

The reference notches shall be of the “N” type (see Figure 1). The sides of the notch shall be nominally parallel and the bottom shall be nominally square to the sides.

It is recognized that the bottom or the bottom corners of the notch may be rounded.



Key

w width

d depth

Figure 1 — Reference notch forms (“N” type notch)

6.2.2 The reference notch shall be formed by machining, spark erosion or other methods.

6.3 Dimensions of reference notches

6.3.1 Width, *w*

The width of the reference notch (see Figure 1) shall not be greater than 1,0 mm.

6.3.2 Depth, *d*

The depth of the reference notch (see Figure 1) shall be 12,5 % of the specified thickness with the following limitations:

- minimum notch depth: 0,5 mm;
- maximum notch depth: 1,5 mm.

The tolerance on notch depth shall be ± 15 % of the nominal reference notch depth.

6.3.3 Notch length

Unless otherwise specified by the product standard or agreed between the purchaser and the manufacturer, the length of the reference notch(es) shall be greater than the width of the single transducer or the active aperture of the phased-array transducer, with a maximum of 50 mm.

6.4 Reference hole

The reference hole shall be drilled through the wall, perpendicular to the surface of the tube; for welded pipe, it shall be drilled at the centre of the weld.

The diameter of the reference holes related to the outside diameter of the tube shall not exceed the requirements of Table 1. The holes shall be formed by machining, spark erosion or other methods.

Table 1 — Specified tube diameter related to the diameter of the reference holes

Specified outside diameter of the tube D mm	Maximum hole diameter acceptance level mm
$10 \leq D \leq 26,9$	1,20
$26,9 < D \leq 48,3$	1,70
$48,3 < D \leq 63,5$	2,20
$63,5 < D \leq 114,3$	2,70
$114,3 < D$	3,20

6.5 Verification of the reference standards

The reference standard dimensions and shape shall be verified by a suitable technique.

The diameter of the reference hole(s) (see Table 1), when used, shall be verified and shall not exceed the value reported in Table 1; the reference notch dimensions and shape shall be verified by a suitable technique.

7 Equipment calibration and checking

7.1 General

At the start of each testing cycle, the equipment shall be calibrated to consistently produce (e.g. from three consecutive passes of the reference tube through the equipment) clearly identifiable signals from the reference standard(s). These signals shall be used to activate the respective trigger alarm of the equipment.

7.2 Adjustment of the trigger/alarm level

7.2.1 Where a single trigger/alarm level is used, the transducers shall be adjusted so that the signals from the internal and external reference notches are equal, as far as possible; and the full signal amplitude of the lesser of the two signals shall be used to set the trigger/alarm level of the equipment.

Where a reference hole is applied, the signal from the inner and outer side of the reference hole shall be used in accordance in the same manner as for reference notches.

7.2.2 Where separate trigger/alarm levels are used for the signals from internal and external reference notches, the full amplitude from each signal shall be used to set the relevant trigger/alarm level of the equipment. The position and width of the gates shall be adjusted in such a way that the entire wall thickness of the tube is tested.

Where a reference hole is applied, the signal from the inner and outer side of the reference hole shall be used in accordance in the same manner as for reference notches.

7.3 Calibration check and re-calibration

7.3.1 The calibration of the equipment shall be checked at regular intervals during the production testing of tubes of the same specified diameter, thickness and grade, by passing the reference tube through the testing equipment.

The checking frequency for calibration shall be at least every 4 h, but also whenever there is an equipment operator change-over and at the start and end of the production run.

7.3.2 The equipment shall be recalibrated if any of the parameters which were used during the initial calibration are changed.

7.3.3 During dynamic checking of the calibration, the relative speed of movement between the reference tube and the transducer assembly shall be the same as that to be used during the production test. Other calibration conditions are allowed, provided that the manufacturer can demonstrate that the same results are obtained as for the dynamic check of the calibration.

7.3.4 If, on checking during production testing, the calibration requirements are not satisfied, then all tubes tested since the previous acceptable equipment calibration shall be re-tested once the equipment has been re-calibrated.

8 Acceptance

8.1 Any tube producing signals lower than the trigger/alarm level shall be deemed to have passed this test.

8.2 Any tube producing signals equal to or greater than the trigger/alarm level shall be designated as suspect or, at the manufacturer's option, may be re-tested. If, after two consecutive retests, all signals are lower than the trigger/alarm level, the tube shall be deemed to have passed this test; otherwise, the tube shall be designated as suspect.

8.3 For suspect tubes, one or more of the following actions shall be taken, subject to the requirements of the product standard.

- a) The suspect area shall be dressed or explored by a suitable method. After checking that the remaining thickness is within the tolerance, the tube shall be re-tested as previously specified. If no signals are obtained equal to or greater than the trigger/alarm level, the tube shall be deemed to have passed this test. The suspect area may be re-tested by other non-destructive techniques and test methods, by agreement between the purchaser and the manufacturer, to agreed acceptance levels.
- b) Each suspect tube shall be subject to a hydraulic leak-tightness test in accordance with the relevant product standard, unless otherwise agreed between the purchaser and the manufacturer.
- c) The suspect area shall be cropped off.
- d) The tube shall be deemed not to have passed this test.

9 Test method

When specified, the manufacturer shall submit to the purchaser a test report that includes at least the following information:

- a) a reference to this International Standard (ISO 10332:2010);
- b) a statement of conformity;
- c) any deviation, by agreement or otherwise, from the procedures specified;
- d) the product designation by steel grade and size;
- e) the type and details of testing technique(s);
- f) the equipment calibration method used;
- g) a description of the reference standard and acceptance level;
- h) the date of the test;
- i) the operator's identification.

Annex A (normative)

Manual/semi-automated testing of untested ends and suspected areas

A.1 Untested tube ends

When specified by the relevant product standard, tube-end zones which cannot be tested by the automated ultrasonic test equipment shall be subjected to a manual/semi-automated test, from the ultimate tube ends and over the length of the original untested zone, plus 10 %.

The manual/semi-automated ultrasonic test shall be carried out so that the whole surface of the untested end is scanned with a 10 % overlap of adjacent scanning paths, with reference to the ultrasonic transducer width used, measured in the direction parallel to the major axis of the tube.

The manual/semi-automated ultrasonic test shall be carried out using the ultrasonic shear-wave technique or Lamb-wave technique, test sensitivity (reference notch depth) and general test parameters, as used during the original automated test on the main tube length, with the restrictions given in A.3.

A.2 Local suspected areas

Where appropriate, local areas on the tube deemed suspect by the automated ultrasonic equipment shall be subjected to a test using the manual ultrasonic shear-wave technique or Lamb-wave technique, test sensitivity (reference notch depth) and general test parameters, as used during the original automated test, with the restrictions given in A.3, so that the whole of the local suspected areas are scanned.

A.3 Manual ultrasonic test restrictions

The following restrictions apply to the application of a manual ultrasonic shear-wave test to untested end zones and/or local suspect areas.

- a) The beam angle in steel used for manual ultrasonic testing with shear waves shall be nominally the same as that used during the original automated test.
- b) Scanning shall be carried out in circumferential directions of sound propagation.
- c) The scanning speed over the tube surface shall not exceed 150 mm/s.
- d) The ultrasonic transducer type to be used during manual ultrasonic testing with shear waves shall be of the contact, gap-scan or immersion type. Means shall be provided to ensure that the transducer is held at the correct distance from the tube surface; for example, for contact-type transducers, the "wear-face" at the front face of the transducer shall be fitted to the curvature of the tube under test.
- e) The width of the transducer, measured parallel to the major axis of the tube, used in the manual ultrasonic test shall not exceed that used during the original automated test.
- f) The nominal ultrasonic test frequency of the transducer used in manual testing shall not vary from that used during the original automated test by more than 1 MHz. Where Lamb waves were used in the original automated test, the frequency of shear-wave transducers, if used for manual testing, shall be in the range of 4 MHz to 5 MHz.

British Standards Institution (BSI)

BSI is the independent national body responsible for preparing British Standards and other standards-related publications, information and services.

It presents the UK view on standards in Europe and at the international level.

It is incorporated by Royal Charter.

Revisions

British Standards are updated by amendment or revision. Users of British Standards should make sure that they possess the latest amendments or editions.

It is the constant aim of BSI to improve the quality of our products and services. We would be grateful if anyone finding an inaccuracy or ambiguity while using this British Standard would inform the Secretary of the technical committee responsible, the identity of which can be found on the inside front cover.

Tel: +44 (0)20 8996 9001 Fax: +44 (0)20 8996 7001

BSI offers Members an individual updating service called PLUS which ensures that subscribers automatically receive the latest editions of standards.

Tel: +44 (0)20 8996 7669 Fax: +44 (0)20 8996 7001

Email: plus@bsigroup.com

Buying standards

You may buy PDF and hard copy versions of standards directly using a credit card from the BSI Shop on the website www.bsigroup.com/shop. In addition all orders for BSI, international and foreign standards publications can be addressed to BSI Customer Services.

Tel: +44 (0)20 8996 9001 Fax: +44 (0)20 8996 7001

Email: orders@bsigroup.com

In response to orders for international standards, it is BSI policy to supply the BSI implementation of those that have been published as British Standards, unless otherwise requested.

Information on standards

BSI provides a wide range of information on national, European and international standards through its Knowledge Centre.

Tel: +44 (0)20 8996 7004 Fax: +44 (0)20 8996 7005

Email: knowledgecentre@bsigroup.com

Various BSI electronic information services are also available which give details on all its products and services.

Tel: +44 (0)20 8996 7111 Fax: +44 (0)20 8996 7048

Email: info@bsigroup.com

BSI Subscribing Members are kept up to date with standards developments and receive substantial discounts on the purchase price of standards. For details of these and other benefits contact Membership Administration.

Tel: +44 (0)20 8996 7002 Fax: +44 (0)20 8996 7001

Email: membership@bsigroup.com

Information regarding online access to British Standards via British Standards Online can be found at www.bsigroup.com/BSOL

Further information about BSI is available on the BSI website at www.bsigroup.com/standards

Copyright

Copyright subsists in all BSI publications. BSI also holds the copyright, in the UK, of the publications of the international standardization bodies. Except as permitted under the Copyright, Designs and Patents Act 1988 no extract may be reproduced, stored in a retrieval system or transmitted in any form or by any means – electronic, photocopying, recording or otherwise – without prior written permission from BSI. This does not preclude the free use, in the course of implementing the standard of necessary details such as symbols, and size, type or grade designations. If these details are to be used for any other purpose than implementation then the prior written permission of BSI must be obtained. Details and advice can be obtained from the Copyright & Licensing Manager.

Tel: +44 (0)20 8996 7070

Email: copyright@bsigroup.com

BSI Group Headquarters

389 Chiswick High Road London W4 4AL UK

Tel +44 (0)20 8996 9001

Fax +44 (0)20 8996 7001

www.bsigroup.com/standards