

BS ISO 8132:2014



BSI Standards Publication

**Hydraulic fluid power —
Mounting dimensions for
accessories for single rod
cylinders, 16 MPa (160 bar)
medium and 25 MPa (250 bar)
series**

bsi.

...making excellence a habit.™

National foreword

This British Standard is the UK implementation of ISO 8132:2014. It supersedes BS ISO 8132:2006 which is withdrawn.

The UK participation in its preparation was entrusted to Technical Committee MCE/18/-/3, Cylinders.

A list of organizations represented on this committee can be obtained on request to its secretary.

This publication does not purport to include all the necessary provisions of a contract. Users are responsible for its correct application.

© The British Standards Institution 2014. Published by BSI Standards Limited 2014

ISBN 978 0 580 81178 4

ICS 23.100.20

Compliance with a British Standard cannot confer immunity from legal obligations.

This British Standard was published under the authority of the Standards Policy and Strategy Committee on 30 November 2014.

Amendments issued since publication

Date	Text affected
------	---------------

INTERNATIONAL
STANDARD

ISO
8132

Third edition
2014-11-15

**Hydraulic fluid power — Mounting
dimensions for accessories for single
rod cylinders, 16 MPa (160 bar)
medium and 25 MPa (250 bar) series**

*Transmissions hydrauliques — Dimensions d'interchangeabilité des
accessoires pour vérins à simple tige, 16 MPa (160 bar) série moyenne
et 25 MPa (250 bar)*



Reference number
ISO 8132:2014(E)

© ISO 2014



COPYRIGHT PROTECTED DOCUMENT

© ISO 2014

All rights reserved. Unless otherwise specified, no part of this publication may be reproduced or utilized otherwise in any form or by any means, electronic or mechanical, including photocopying, or posting on the internet or an intranet, without prior written permission. Permission can be requested from either ISO at the address below or ISO's member body in the country of the requester.

ISO copyright office
Case postale 56 • CH-1211 Geneva 20
Tel. + 41 22 749 01 11
Fax + 41 22 749 09 47
E-mail copyright@iso.org
Web www.iso.org

Published in Switzerland

Contents

Page

Foreword	iv
Introduction	v
1 Scope	1
2 Normative references	1
3 Terms and definitions	2
4 Mounting dimensions	2
5 Tolerances	2
6 Application instructions	2
6.1 Installation.....	2
6.2 Lubrication.....	3
7 Designation	3
8 Identification statement (reference to this International Standard)	3
Bibliography	14

Foreword

ISO (the International Organization for Standardization) is a worldwide federation of national standards bodies (ISO member bodies). The work of preparing International Standards is normally carried out through ISO technical committees. Each member body interested in a subject for which a technical committee has been established has the right to be represented on that committee. International organizations, governmental and non-governmental, in liaison with ISO, also take part in the work. ISO collaborates closely with the International Electrotechnical Commission (IEC) on all matters of electrotechnical standardization.

The procedures used to develop this document and those intended for its further maintenance are described in the ISO/IEC Directives, Part 1. In particular the different approval criteria needed for the different types of ISO documents should be noted. This document was drafted in accordance with the editorial rules of the ISO/IEC Directives, Part 2 (see www.iso.org/directives).

Attention is drawn to the possibility that some of the elements of this document may be the subject of patent rights. ISO shall not be held responsible for identifying any or all such patent rights. Details of any patent rights identified during the development of the document will be in the Introduction and/or on the ISO list of patent declarations received (see www.iso.org/patents).

Any trade name used in this document is information given for the convenience of users and does not constitute an endorsement.

For an explanation on the meaning of ISO specific terms and expressions related to conformity assessment, as well as information about ISO's adherence to the WTO principles in the Technical Barriers to Trade (TBT) see the following URL: [Foreword - Supplementary information](#)

The committee responsible for this document is ISO/TC 131, *Fluid power systems*, Subcommittee SC 3, *Cylinders*.

This third edition cancels and replaces the second edition (ISO 8132:2006), which has been technically revised.

Introduction

In hydraulic fluid power systems, power is transmitted and controlled through a liquid under pressure within an enclosed circuit.

One component of such systems is the fluid power cylinder. This is a device that converts power into linear mechanical force and motion. It consists of a movable element, i.e. a piston and piston rod, operating within a cylindrical bore.

Hydraulic fluid power — Mounting dimensions for accessories for single rod cylinders, 16 MPa (160 bar) medium and 25 MPa (250 bar) series

1 Scope

This International Standard specifies the mounting dimensions required for the interchangeability of accessories for 16 MPa [160 bar] medium series cylinders in accordance with ISO 6020-1 and for 25 MPa (250 bar) series cylinders, in accordance with ISO 6022. The accessories have been designed specifically for use with cylinders manufactured in accordance with ISO 6020-1 and ISO 6022, but this does not limit their application.

NOTE 1 bar = 0,1 MPa = 10^5 Pa; 1 MPa = 1 N/mm²

This International Standard covers the following accessories, identified in accordance with ISO 6099:

- AP2 — rod clevis, female thread (see [Figure 1](#) and [Table 1](#));
- AF3 — rod flange, circular (see [Figure 2](#) and [Table 2](#));
- AB4 — clevis bracket, straight (see [Figure 3](#) and [Table 3](#));
- AB3 — clevis bracket, in angle (see [Figure 4](#) and [Table 4](#));
- AT4 — trunnion bracket (see [Figure 5](#) and [Table 5](#));
- AA4-R — pivot pin, plain (cotter pin or snap ring type) (see [Figure 6](#) and [Table 6](#));
- AA4-S — pivot pin, plain (split pins) (see [Figure 7](#) and [Table 7](#));
- AA6-R — pivot pin, spherical bearing (cotter pin or snap ring type) (see [Figure 6](#) and [Table 6](#));
- AA6-S — pivot pin, spherical bearing (split pins) (see [Figure 7](#) and [Table 7](#));
- AP6 — rod eye spherical, female thread (see [Figure 8](#) and [Table 8](#));
- AP4 — rod eye plain, female thread (see [Figure 9](#) and [Table 9](#)).

These accessories are used on hydraulic cylinders for mechanically transmitting the cylinder force. The design of these accessories is based on the maximum forces resulting from the specified internal diameters of the cylinders and pressures according to ISO 3320 and ISO 3322.

This International Standard applies only to the dimensional criteria of products manufactured in conformity with this International Standard; it does not apply to their functional characteristics.

2 Normative references

The following documents, in whole or in part, are normatively referenced in this document and are indispensable for its application. For dated references, only the edition cited applies. For undated references, the latest edition of the referenced document (including any amendments) applies.

ISO 286-2, *Geometrical product specifications (GPS) — ISO code system for tolerances on linear sizes — Part 2: Tables of standard tolerance classes and limit deviations for holes and shafts*

ISO 2768-1, *General tolerances — Part 1: Tolerances for linear and angular dimensions without individual tolerance indications*

ISO 2768-2, *General tolerances — Part 2: Geometrical tolerances for features without individual tolerance indications*

ISO 5598, *Fluid power systems and components — Vocabulary*

ISO 6099, *Fluid power systems and components — Cylinders — Identification code for mounting dimensions and mounting types*

3 Terms and definitions

For the purposes of this document, the terms and definitions given in ISO 5598 apply.

4 Mounting dimensions

The mounting dimensions for accessories are shown in [Figures 1 to 9](#) and given in [Tables 1 to 9](#).

5 Tolerances

5.1 Tolerance values are given in [Figures 1 to 9](#).

5.2 Tolerances for other linear and angular dimensions shall be in accordance with the designation as described in ISO 2768-1.

5.3 Geometrical tolerances shall be in accordance with the designation as described in ISO 2768-2.

NOTE All figures in this International Standard indicate tolerance requirements using the ISO code “ISO 2768-mk”, as described in ISO 2768-1 and ISO 2768-2.

6 Application instructions

6.1 Installation

6.1.1 Shaft for pivot pin, plain

A tolerance of f8, in accordance with ISO 286-2, is recommended for the bearing shafts.

6.1.2 Shaft for pivot pin, spherical bearing

A tolerance of m6 should be used for the shaft fitting the spherical plain bearing bore (see ISO 286-2). In exceptional cases (for example, where there are difficulties in cylinder installation), a tolerance of f7 may be used. In this instance, a case-hardened shaft is recommended because movement occurs between the shaft and the bearing bore and lubrication is needed. Lubrication may be carried out through the shaft.

6.1.3 Tilting angle

The specified tilting angle of $\pm 4^\circ$ can still be obtained when the clevis inner faces abut the side faces of the inner ring of the spherical plain bearing.

6.1.4 Rod clevis

The rod clevis, female thread (AP2), shall be screwed firmly against the piston rod shoulder before the two pieces are locked.

6.2 Lubrication

6.2.1 Sufficient lubrication for the satisfactory performance of these accessories shall be provided.

6.2.2 The method and frequency of such lubrication depend on the particular operating conditions.

6.2.3 For maintenance-free mating parts, no additional lubrication is required.

7 Designation

Accessories conforming to this International Standard shall be designated by the mounting type identification, in accordance with ISO 6099, followed by "ISO 8132", followed by a dash, followed by the type (size) from the relevant table.

EXAMPLE 1 A rod clevis, female thread of type 20 ($CK = 20$) conforming to ISO 8132 is designated by:

AP2 ISO 8132 - 20

EXAMPLE 2 A rod flange, circular of type 20 ($KK = M16 \times 1,5$) conforming to ISO 8132 is designated by:

AF3 ISO 8132 - 20

EXAMPLE 3 A clevis bracket, straight of type 20 ($CK = 20$), conforming to ISO 8132 is designated by:

AB4 ISO 8132 - 20

EXAMPLE 4 A clevis bracket, in angle of type 20 ($CK = 20$), conforming to ISO 8132 is designated by:

AB3 ISO 8132 - 20

EXAMPLE 5 A trunnion bracket of type 20 ($CR = 20$), conforming to ISO 8132 is designated by:

AT4 ISO 8132 - 20

EXAMPLE 6 A pivot pin, plain (cotter pin or snap ring type) of type 25 ($EK = 25$), conforming to ISO 8132 is designated by:

AA4-R ISO 8132 - 25

EXAMPLE 7 A rod eye spherical, female thread of type 20 ($CN = 20$), conforming to ISO 8132 is designated by:

AP6 ISO 8132 - 20

EXAMPLE 8 A rod eye plain, female thread of type 20 ($CK = 20$), conforming to ISO 8132 is designated by:

AP4 ISO 8132 - 20

8 Identification statement (reference to this International Standard)

Use the following statement in test reports, catalogues, and sales literature when electing to comply with this International Standard:

"Cylinder accessory mounting dimensions conform to ISO 8132:2014, Hydraulic fluid power — Mounting dimensions for accessories for single rod cylinders, 16 MPa (160 bar) medium and 25 MPa (250 bar) series."

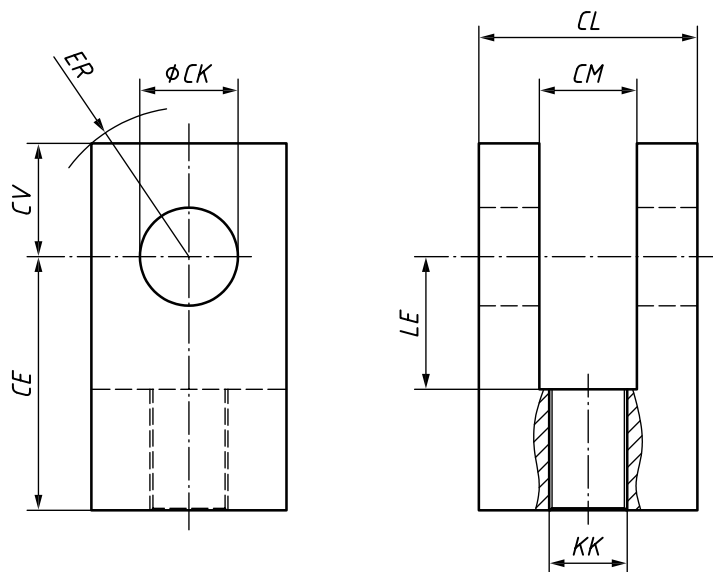


Figure 1 — AP2 — Rod clevis, female thread

Table 1 — Dimensions of AP2 — Rod clevis, female thread

Dimensions in millimetres

Type	Nominal force N	CK H9	CL h16	CM A13	CE js13	CV max.	KK 6H	LE min.	ER max.
12	8 000	12	28	12	38	16	M12 × 1,25	18	16
16	12 500	16	36	16	44	20	M14 × 1,5	22	20
20	20 000	20	45	20	52	25	M16 × 1,5	27	25
25	32 000	25	56	25	65	32	M20 × 1,5	34	32
32	50 000	32	70	32	80	40	M27 × 2	41	40
40	80 000	40	90	40	97	50	M33 × 2	51	50
50	125 000	50	110	50	120	63	M42 × 2	63	63
63	200 000	63	140	63	140	71	M48 × 2	75	71
70	250 000	70	150	70	160	80	M56 × 2	84	80
80	320 000	80	170	80	180	90	M64 × 3	94	90
90	400 000	90	190	90	195	100	M72 × 3	109	100
100	500 000	100	210	100	210	110	M80 × 3	114	110

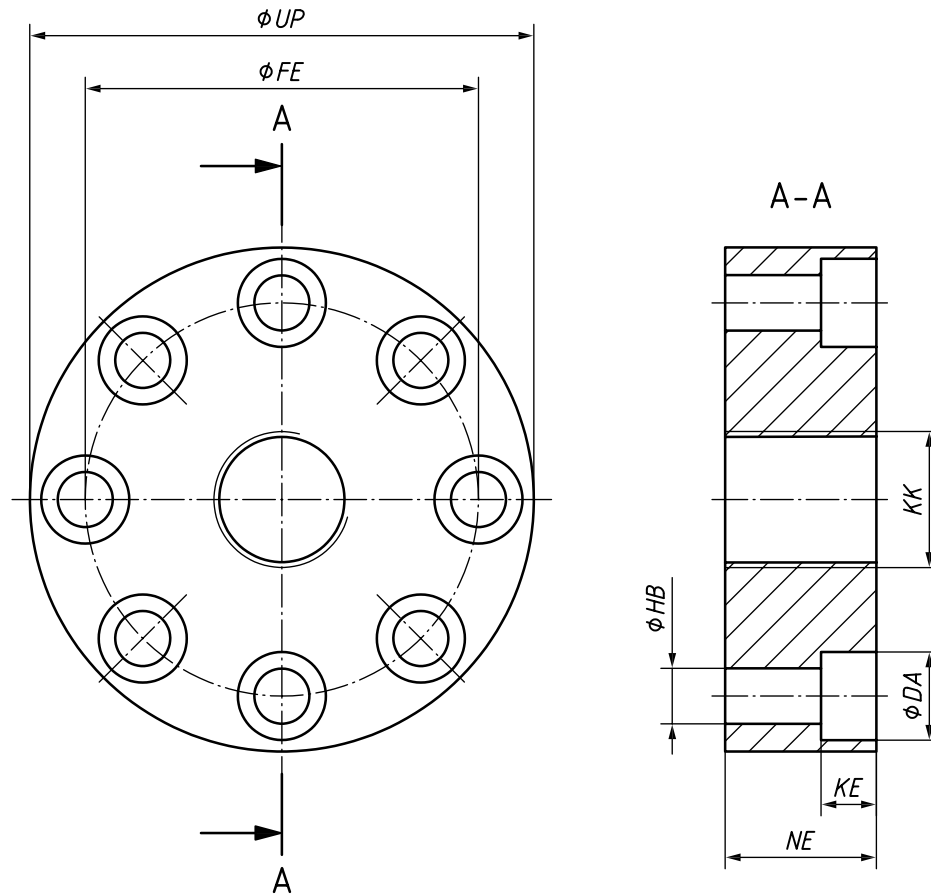


Figure 2 — AF3 — Rod flange, circular

Table 2 — Dimensions of AF3 — Rod flange, circular

Dimensions in millimetres

Type	Nominal force N	KK 6H	FE JS13	Number of holes	HB H13	NE JS13	UP max.	DA H13	KE +0,4 0
12	8 000	M12 × 1,25	40	4	6,6	17	56	11	6,8
16	12 500	M14 × 1,5	45	4	9	19	63	14,5	9
20	20 000	M16 × 1,5	54	6	9	23	72	14,5	9
25	32 000	M20 × 1,5	63	6	9	29	82	14,5	9
32	50 000	M27 × 2	78	6	11	37	100	17,5	11
40	80 000	M33 × 2	95	8	13,5	46	120	20	13
50	125 000	M42 × 2	120	8	17,5	57	150	26	17,5
63	200 000	M48 × 2	150	8	22	64	190	33	21,5
70	250 000	M56 × 2	165	8	24	77	212	36	23,5
80	320 000	M64 × 3	180	8	26	86	230	39	25,5
90	400 000	M72 × 3	195	10	29	89	250	43	28,5
100	500 000	M80 × 3	210	10	29	96	270	43	28,5

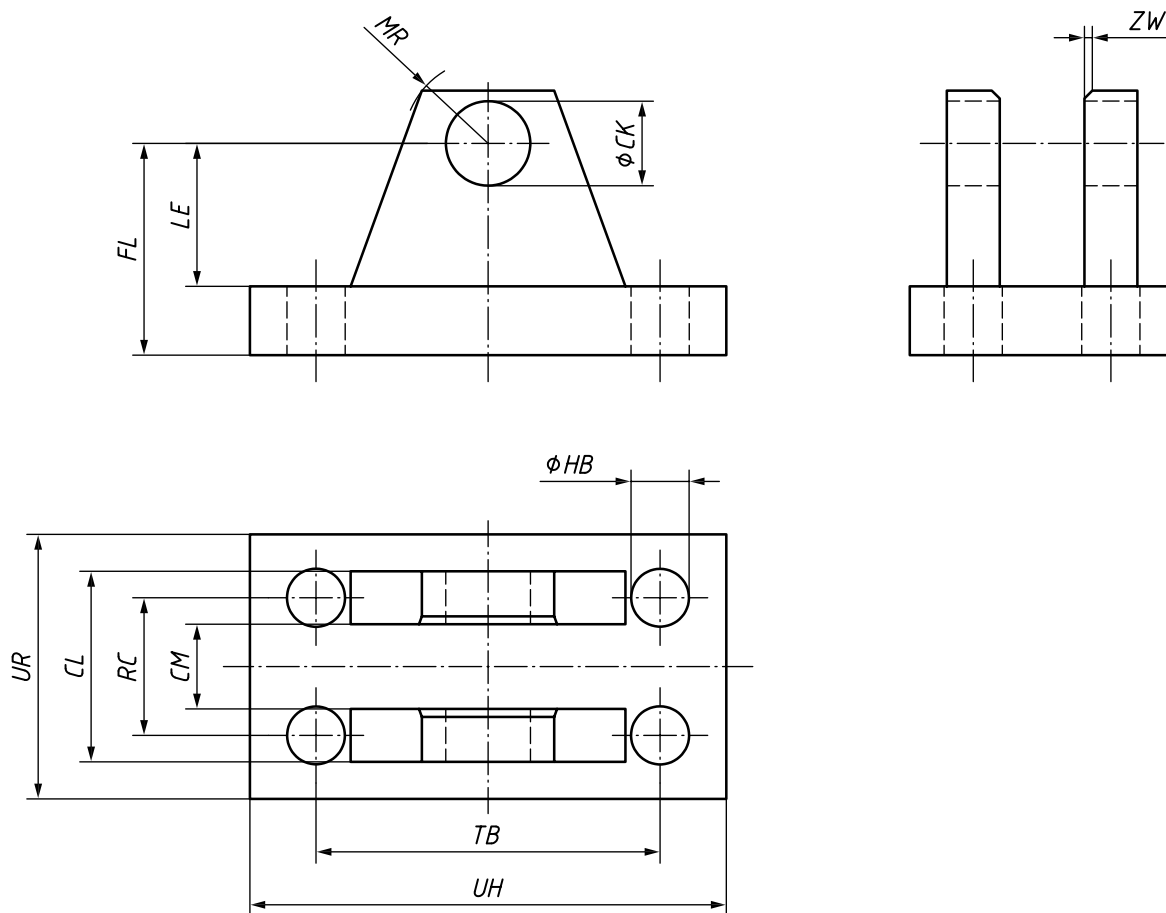


Figure 3 — AB4 — Clevis bracket, straight

Table 3 — Dimensions of AB4 — Clevis bracket, straight

Dimensions in millimetres

Type	Nominal force N	CK H9	CL h16	CM A13	ZW min.	FL JS12	HB H13	LE min.	MR max.	RC JS14	TB JS14	UR max.	UH max.
12	8 000	12	28	12	-	34	9	22	12	20	50	40	70
16	12 500	16	36	16	-	40	11	27	16	26	65	50	90
20	20 000	20	45	20	-	45	11	30	20	32	75	58	98
25	32 000	25	56	25	-	55	13,5	37	25	40	85	70	113
32	50 000	32	70	32	-	65	17,5	43	32	50	110	85	143
40	80 000	40	90	40	-	76	22	52	40	65	130	108	170
50	125 000	50	110	50	-	95	26	65	50	80	170	130	220
63	200 000	63	140	63	1 × 45°	112	33	75	63	100	210	160	270
70	250 000	70	150	70	2 × 45°	130	33	90	70	110	230	175	300
80	320 000	80	170	80	2 × 45°	140	39	95	80	125	250	210	320
90	400 000	90	190	90	2 × 45°	160	45	108	90	140	290	230	370
100	500 000	100	210	100	2 × 45°	180	45	120	100	160	315	260	400
110	635 000	110	240	110	2 × 45°	200	52	138	110	180	350	290	445
125	800 000	125	270	125	5 × 45°	230	52	170	125	200	385	320	470

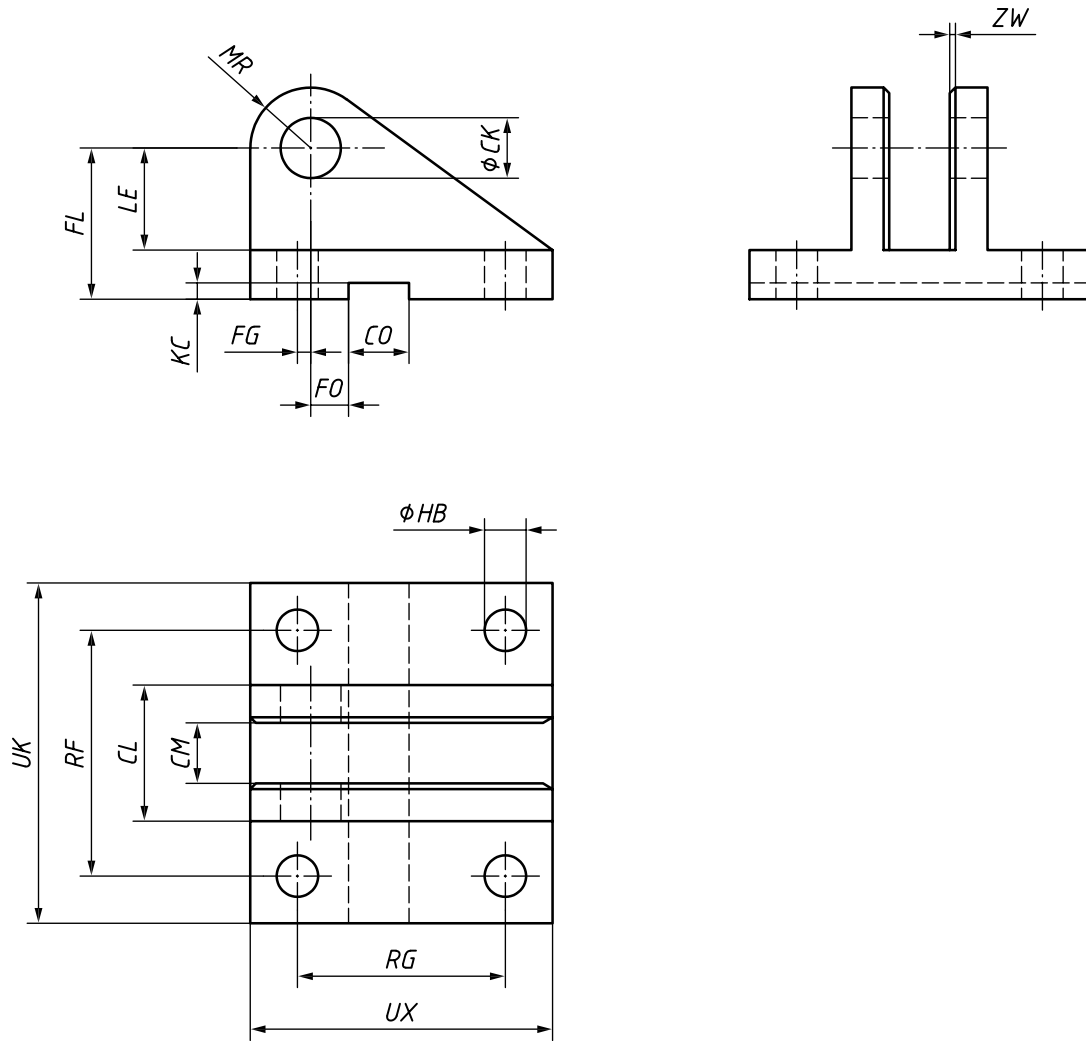


Figure 4 — AB3 — Clevis bracket, in angle

Table 4 — Dimensions of AB3 — Clevis bracket, in angle

Dimensions in millimetres

Type	Nominal force N	CK H9	CL h16	CM A13	FL js13	ZW min.	HB H13	CO N9	LE min.	MR max.	RG js13	RF js13	UX max.	UK max.	FG JS14	KC +0,3 0	FO JS14
12	8 000	12	28	12	34	-	9	10	22	12	45	52	65	72	2	3,3	10
16	12 500	16	36	16	40	-	11	16	27	16	55	65	80	90	3,5	4,3	10
20	20 000	20	45	20	45	-	11	16	30	20	70	75	95	100	7,5	4,3	10
25	32 000	25	56	25	55	-	13,5	25	37	25	85	90	115	120	10	5,4	10
32	50 000	32	70	32	65	-	17,5	25	43	32	110	110	145	145	14,5	5,4	6
40	80 000	40	90	40	76	-	22	36	52	40	125	140	170	185	17,5	8,4	6
50	125 000	50	110	50	95	-	26	36	65	50	150	165	200	215	25	8,4	--
63	200 000	63	140	63	112	1 × 45°	33	50	75	63	170	210	230	270	33	11,4	--
70	250 000	70	150	70	130	2 × 45°	33	50	90	70	190	230	250	290	40	11,4	--
80	320 000	80	170	80	140	2 × 45°	39	50	95	80	210	250	280	320	45	11,4	--
90	400 000	90	190	90	160	2 × 45°	45	63	108	90	235	280	320	360	47,5	12,4	--
100	500 000	100	210	100	180	2 × 45°	52	63	120	100	250	315	345	405	52,5	12,4	--

Table 4 (continued)

Type	Nominal force N	CK H9	CL h16	CM A13	FL js13	ZW min.	HB H13	CO N9	LE min.	MR max.	RG js13	RF js13	UX max.	UK max.	FG JS14	KC +0,3 0	FO JS14
110	635 000	110	240	110	200	2 × 45°	52	80	138	110	305	335	400	425	62,5	15,4	--
125	800 000	125	270	125	230	5 × 45°	52	80	170	125	350	365	450	455	75	15,4	--

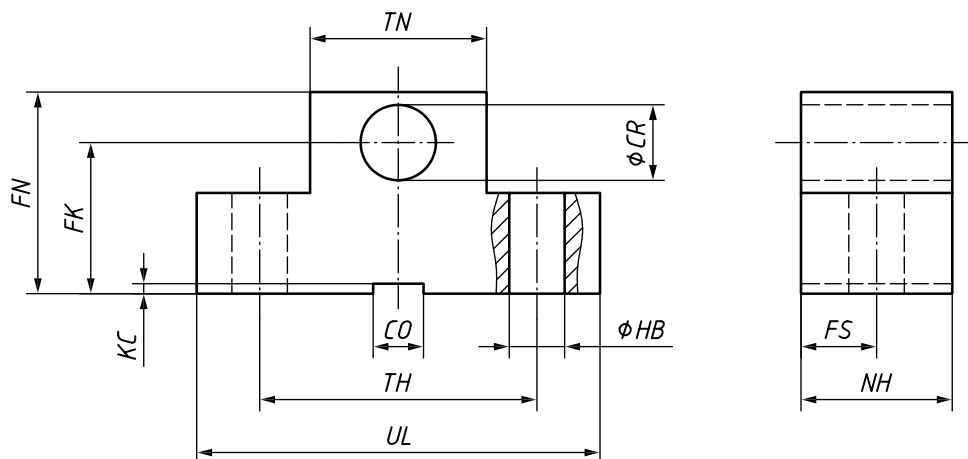


Figure 5 — AT4 - Trunnion bracket

Table 5 — Dimensions of AT4 - Trunnion bracket

Dimensions in millimetres

Type	Nominal force N	CR H7	FK JS12	FN max.	HB H13	NH max.	TH js13	TN max.	UL max.	CO N9	KC +0,3 0	FS js13
12	8 000	12	34	50	9	17	40	24	63	10	3,3	8
16	12 500	16	40	60	11	21	50	31	80	16	4,3	10
20	20 000	20	45	70	11	21	60	41	90	16	4,3	10
25	32 000	25	55	80	13,5	26	80	56	110	25	5,4	12
32	50 000	32	65	100	17,5	33	110	70	150	25	5,4	15
40	80 000	40	76	120	22	41	125	88	170	36	8,4	16
50	125 000	50	95	140	26	51	160	105	210	36	8,4	20
63	200 000	63	112	180	33	61	200	130	265	50	11,4	25
80	320 000	80	140	220	39	81	250	170	325	50	11,4	31
90	385 000	90	160	250	45	91	265	190	345	63	12,4	40
100	500 000	100	180	280	52	102	295	215	385	63	12,4	45
110	630 000	110	200	310	52	112	320	240	410	80	15,4	50
125	785 000	125	220	345	62	132	385	270	570	80	15,4	56

NOTE These dimensions are valid for operation at 16 MPa (160 bar) of cylinders with bores of 25 mm up to and including 250 mm; they are also valid for operation at 25 MPa (250 bar) of cylinders with bores of 50 mm up to and including 200 mm.

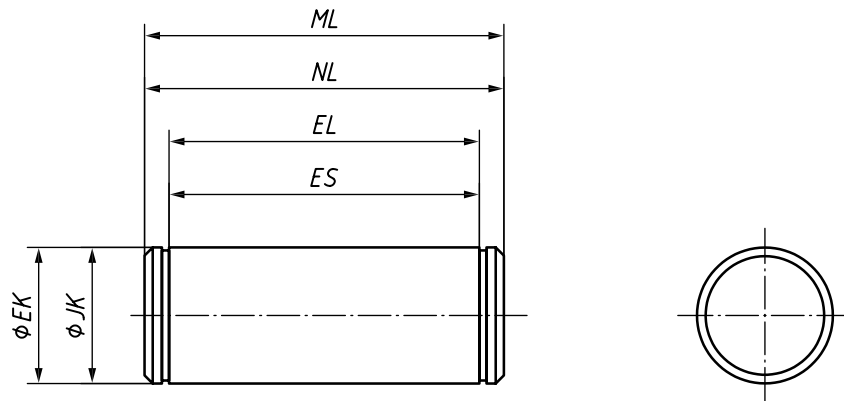


Figure 6 — AA4-R or AA6-R — Pivot pin, plain or spherical bearing (cotter pin or snap ring type)

Table 6 — Dimensions of AA4-R or AA6-R — Pivot pin, plain or spherical bearing (cotter pin or snap ring type)

Dimensions in millimetres

Type	Nominal force N	NL ML max.	ES EL H16	JK ^a EK ^b f8
12	8 000	49	29	12
16	12 500	57	37	16
20	20 000	72	46	20
25	32 000	84	57	25
32	50 000	105	72	32
40	80 000	133	92	40
50	125 000	165	112	50
63	200 000	185	142	63
70	250 000	205	152	70
80	320 000	225	172	80

^a Tolerances for spherical bearing is m6.

^b Tolerances for plain bearing is H9.

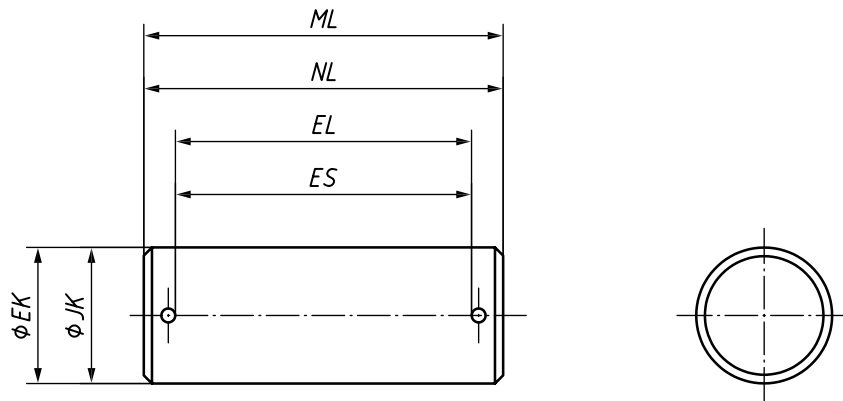


Figure 7 — AA4-S or AA6-S — Pivot pin, plain or spherical bearing (split pins)

Table 7 — Dimensions of AA4-S or AA6-S — Pivot pin, plain or spherical bearing (split pins)

Type	Nominal force N	NL ML max.	ES EL H16	JK ^a EK ^b f8
12	8 000	49	29	12
16	12 500	57	37	16
20	20 000	72	46	20
25	32 000	84	57	25
32	50 000	105	72	32
40	80 000	133	92	40
50	125 000	165	112	50
63	200 000	185	142	63
70	250 000	205	152	70
80	320 000	225	172	80

^a Tolerances for spherical bearing is m6.
^b Tolerances for plain bearing is H9.

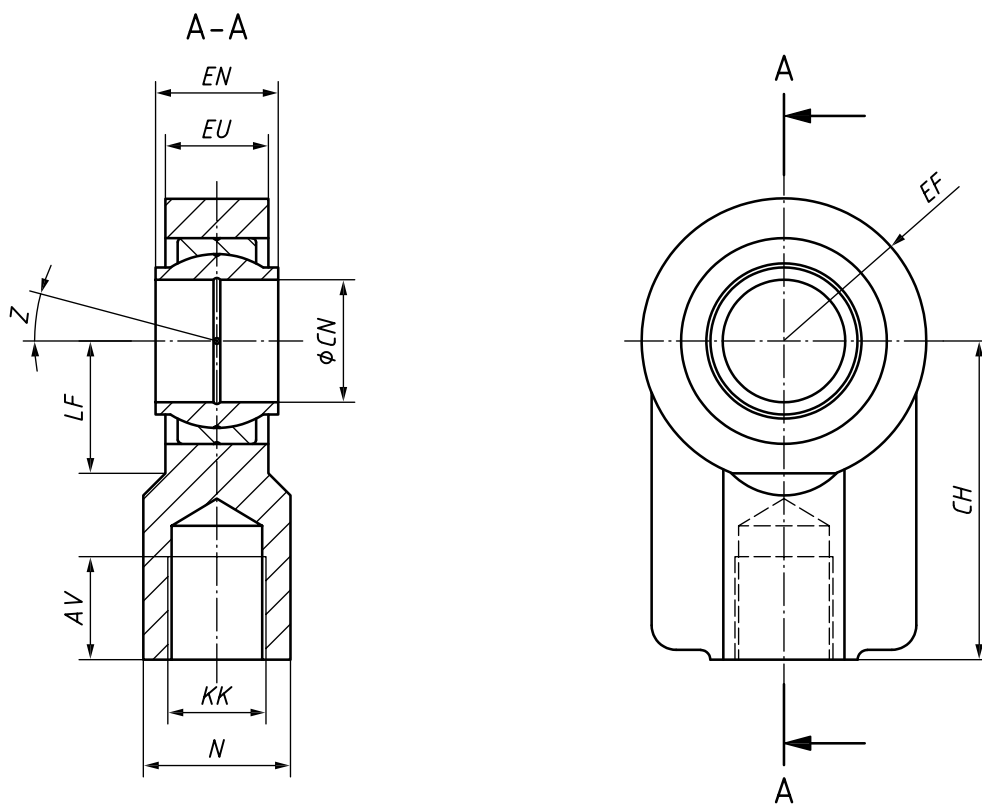


Figure 8 — AP6 — Rod eye spherical, female thread

Table 8 — Dimensions of AP6 — Rod eye spherical, female thread

Dimensions in millimetres

Type	Nominal force N	N max.	KK 6H	CN		EN		EF max.	CH js13	AV min.	LF min.	EU max.	Tilting angle Z min.
				nom.	tol. µm	nom.	tol. µm						
12	8 000	19	M12 × 1,25	12	+18 0	12	0	16,5	38	17	14	11	4°
16	12 500	22	M14 × 1,5	16		16	-180	20,5	44	19	18	14	
20	20 000	28	M16 × 1,5	20	+21 0	20	0	25	52	23	22	17,5	
25	32 000	31	M20 × 1,5	25		25	-210	32	65	29	27	22	
32	50 000	38	M27 × 2	32		32		40	80	37	32	28	
40	80 000	47	M33 × 2	40	+25 0	40	0	50	97	46	41	34	
50	125 000	58	M42 × 2	50		50	-250	63	120	57	50	42	
63	200 000	70	M48 × 2	63	+30 0	63	0	72,5	140	64	62	53,5	
80	320 000	91	M64 × 3	80		80	-300	92	180	86	78	68	
100	500 000	110	M72 × 3	100	+35 0	100	0 -350	114	210	91	98	85,5	
			M80 × 3							96			
125	800 000	135	M90 × 3	125	+40 0	125	0 -400	160	260	107	120	105	
			M100 × 3							113			
160	1 250 000	165	M125 × 4	160		160		200	310	126	150	133	
200	2 000 000	215	M160 × 4	200	+46 0	200	0	250	390	161	195	165	
250	3 200 000	300	M200 × 4	250		250	-460	320	530	205	265	200	
320	5 000 000	360	M250 × 6	320	+57 0	320	0 -570	375	640	260	325	265	

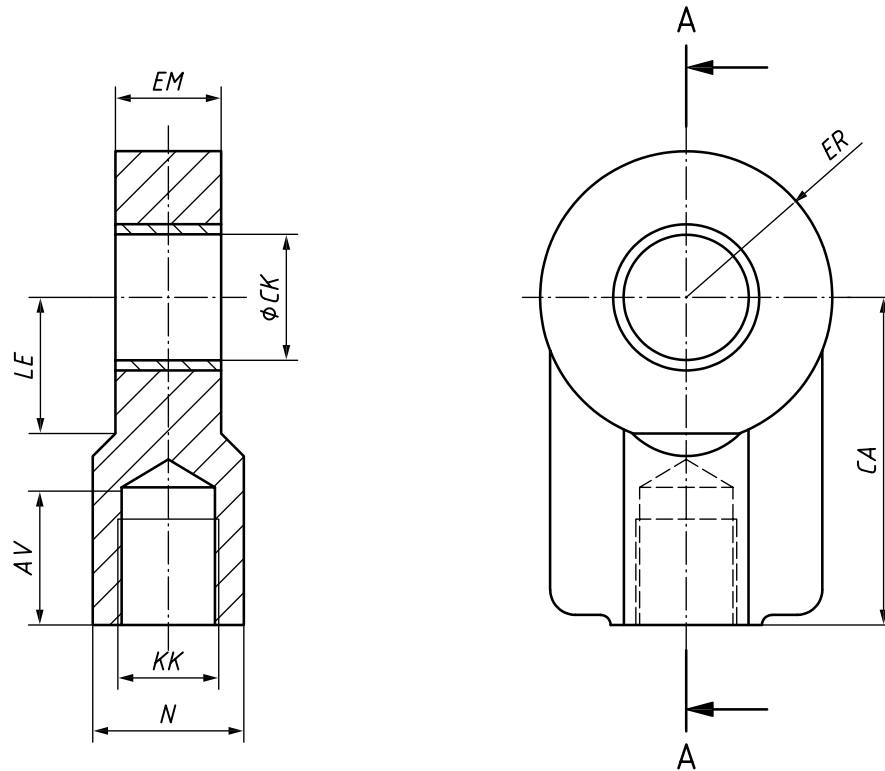


Figure 9 — AP4 — Rod eye plain, female thread

Table 9 — Dimensions of AP4 — Rod eye plain, female thread

Dimensions in millimetres

Type	Nominal force N	KK 6H	CK H9	EM h12	ER max.	CA JS13	AV min.	LE min.	N max.
12	8 000	M12 × 1,25	12	12	16,5	38	17	14	19
16	12 500	M14 × 1,5	16	16	20,5	44	19	18	22
20	20 000	M16 × 1,5	20	20	25	52	23	22	28
25	32 000	M20 × 1,5	25	25	32	65	29	27	31
32	50 000	M27 × 2	32	32	40	80	37	32	38
40	80 000	M33 × 2	40	40	50	97	46	41	47
50	125 000	M42 × 2	50	50	63	120	57	50	58
63	200 000	M48 × 2	63	63	72,5	140	64	62	70
80	320 000	M64 × 3	80	80	92	180	86	78	91
100	500 000	M72 × 3	100	100	114	210	91	98	110
		M80 × 3					96		
125	800 000	M90 × 3	125	125	160	260	107	120	135
		M100 × 3					113		
160	1 250 000	M125 × 4	160	160	200	310	126	150	165
200	2 000 000	M160 × 4	200	200	250	390	161	195	215
250	3 200 000	M200 × 4	250	250	320	530	205	265	300
320	5 000 000	M250 × 6	320	320	375	640	260	325	360

Bibliography

- [1] ISO 4413, *Hydraulic fluid power — General rules and safety requirements for systems and their components*
- [2] ISO 3320, *Fluid power systems and components — Cylinder bores and piston rod diameters and area ratios — Metric series*
- [3] ISO 3322, *Fluid power systems and components — Cylinders — Nominal pressures*
- [4] ISO 6020-1, *Hydraulic fluid power — Mounting dimensions for single rod cylinders, 16 MPa (160 bar) series — Part 1: Medium series*
- [5] ISO 6022, *Hydraulic fluid power — Mounting dimensions for single rod cylinders, 25 MPa (250 bar) series*

British Standards Institution (BSI)

BSI is the national body responsible for preparing British Standards and other standards-related publications, information and services.

BSI is incorporated by Royal Charter. British Standards and other standardization products are published by BSI Standards Limited.

About us

We bring together business, industry, government, consumers, innovators and others to shape their combined experience and expertise into standards-based solutions.

The knowledge embodied in our standards has been carefully assembled in a dependable format and refined through our open consultation process. Organizations of all sizes and across all sectors choose standards to help them achieve their goals.

Information on standards

We can provide you with the knowledge that your organization needs to succeed. Find out more about British Standards by visiting our website at bsigroup.com/standards or contacting our Customer Services team or Knowledge Centre.

Buying standards

You can buy and download PDF versions of BSI publications, including British and adopted European and international standards, through our website at bsigroup.com/shop, where hard copies can also be purchased.

If you need international and foreign standards from other Standards Development Organizations, hard copies can be ordered from our Customer Services team.

Subscriptions

Our range of subscription services are designed to make using standards easier for you. For further information on our subscription products go to bsigroup.com/subscriptions.

With **British Standards Online (BSOL)** you'll have instant access to over 55,000 British and adopted European and international standards from your desktop. It's available 24/7 and is refreshed daily so you'll always be up to date.

You can keep in touch with standards developments and receive substantial discounts on the purchase price of standards, both in single copy and subscription format, by becoming a **BSI Subscribing Member**.

PLUS is an updating service exclusive to BSI Subscribing Members. You will automatically receive the latest hard copy of your standards when they're revised or replaced.

To find out more about becoming a BSI Subscribing Member and the benefits of membership, please visit bsigroup.com/shop.

With a **Multi-User Network Licence (MUNL)** you are able to host standards publications on your intranet. Licences can cover as few or as many users as you wish. With updates supplied as soon as they're available, you can be sure your documentation is current. For further information, email bsmusales@bsigroup.com.

BSI Group Headquarters

389 Chiswick High Road London W4 4AL UK

Revisions

Our British Standards and other publications are updated by amendment or revision.

We continually improve the quality of our products and services to benefit your business. If you find an inaccuracy or ambiguity within a British Standard or other BSI publication please inform the Knowledge Centre.

Copyright

All the data, software and documentation set out in all British Standards and other BSI publications are the property of and copyrighted by BSI, or some person or entity that owns copyright in the information used (such as the international standardization bodies) and has formally licensed such information to BSI for commercial publication and use. Except as permitted under the Copyright, Designs and Patents Act 1988 no extract may be reproduced, stored in a retrieval system or transmitted in any form or by any means – electronic, photocopying, recording or otherwise – without prior written permission from BSI. Details and advice can be obtained from the Copyright & Licensing Department.

Useful Contacts:

Customer Services

Tel: +44 845 086 9001

Email (orders): orders@bsigroup.com

Email (enquiries): cservices@bsigroup.com

Subscriptions

Tel: +44 845 086 9001

Email: subscriptions@bsigroup.com

Knowledge Centre

Tel: +44 20 8996 7004

Email: knowledgecentre@bsigroup.com

Copyright & Licensing

Tel: +44 20 8996 7070

Email: copyright@bsigroup.com



...making excellence a habit.™