

BS ISO 7236:2014



BSI Standards Publication

**Ships and marine technology
— Inland navigation vessels
— Mounting attachments for
demountable signal masts for
push-tows**

bsi.

...making excellence a habit.™

National foreword

This British Standard is the UK implementation of ISO 7236:2014.

The UK participation in its preparation was entrusted to Technical Committee SME/32/-/11, Ships and marine technology - Intermodal, inland navigation and short sea shipping.

A list of organizations represented on this committee can be obtained on request to its secretary.

This publication does not purport to include all the necessary provisions of a contract. Users are responsible for its correct application.

© The British Standards Institution 2014. Published by BSI Standards Limited 2014

ISBN 978 0 580 85947 2

ICS 47.060

Compliance with a British Standard cannot confer immunity from legal obligations.

This British Standard was published under the authority of the Standards Policy and Strategy Committee on 30 November 2014.

Amendments issued since publication

Date	Text affected
------	---------------

INTERNATIONAL
STANDARD

ISO
7236

Second edition
2014-11-15

**Ships and marine technology —
Inland navigation vessels — Mounting
attachments for demountable signal
masts for push-tows**

*Navires et technologie maritime — Bateaux de navigation intérieure
— Ferrures d'attache pour mâts de signalisation amovibles de convois
poussés*



Reference number
ISO 7236:2014(E)

© ISO 2014



COPYRIGHT PROTECTED DOCUMENT

© ISO 2014

All rights reserved. Unless otherwise specified, no part of this publication may be reproduced or utilized otherwise in any form or by any means, electronic or mechanical, including photocopying, or posting on the internet or an intranet, without prior written permission. Permission can be requested from either ISO at the address below or ISO's member body in the country of the requester.

ISO copyright office
Case postale 56 • CH-1211 Geneva 20
Tel. + 41 22 749 01 11
Fax + 41 22 749 09 47
E-mail copyright@iso.org
Web www.iso.org

Published in Switzerland

Contents

	Page
Foreword	iv
Introduction	v
1 Scope	1
2 Normative references	1
3 Terms and definitions	1
4 Technical requirements	1
4.1 Dimensions.....	2
4.2 Mast stand.....	2
4.3 Mast clamp.....	2
4.4 Mounting attachment.....	3
4.5 Mounting attachment arrangement on the push barge.....	4
4.6 Mast.....	5
5 Material	5
6 Testing	6
7 Designation	6
Annex A (normative) Mast lower part	7

Foreword

ISO (the International Organization for Standardization) is a worldwide federation of national standards bodies (ISO member bodies). The work of preparing International Standards is normally carried out through ISO technical committees. Each member body interested in a subject for which a technical committee has been established has the right to be represented on that committee. International organizations, governmental and non-governmental, in liaison with ISO, also take part in the work. ISO collaborates closely with the International Electrotechnical Commission (IEC) on all matters of electrotechnical standardization.

The procedures used to develop this document and those intended for its further maintenance are described in the ISO/IEC Directives, Part 1. In particular the different approval criteria needed for the different types of ISO documents should be noted. This document was drafted in accordance with the editorial rules of the ISO/IEC Directives, Part 2 (see www.iso.org/directives).

Attention is drawn to the possibility that some of the elements of this document may be the subject of patent rights. ISO shall not be held responsible for identifying any or all such patent rights. Details of any patent rights identified during the development of the document will be in the Introduction and/or on the ISO list of patent declarations received (see www.iso.org/patents).

Any trade name used in this document is information given for the convenience of users and does not constitute an endorsement.

For an explanation on the meaning of ISO specific terms and expressions related to conformity assessment, as well as information about ISO's adherence to the WTO principles in the Technical Barriers to Trade (TBT) see the following URL: [Foreword - Supplementary information](#)

The committee responsible for this document is ISO/TC 8, *Ships and marine technology*, Subcommittee SC 7, *Inland navigation vessels*.

This second edition cancels and replaces the first edition (ISO 7236:1991), of which it constitutes a technical revision.

Amendments

The following amendments have been made to the first edition (1991-06-15).

- a) The definitions have been reworded and two definitions have been added.
- b) The figures have been updated.
- c) The designation has been added.
- d) The International Standard has been editorially revised.

Introduction

Since push barges do not generally have their own masts fitted with the lights required for push-tows, the masts are carried on the push vessel and fitted to the barges when the vessels are connected. Therefore, the mounting attachments are to be of a uniform type, have the same dimensions, and fit the lower part of the mast so that work can be carried out quickly, easily, and safely even in bad visibility conditions and in each weather situation. In addition, the mounting attachments ensure that the masts, and therefore the push-tow light, are correctly seated which is of fundamental importance for safety in shipping traffic.

Ships and marine technology — Inland navigation vessels — Mounting attachments for demountable signal masts for push-tows

1 Scope

This International Standard applies to mounting attachments for demountable masts with an integral mast lower part for the placing of lights on push barges. It specifies construction, dimensions, manufacture, arrangement, and means of attachment.

2 Normative references

The following referenced documents are indispensable for the application of this document. For dated references, only the edition cited applies. For undated references, the latest edition of the referenced document (including any amendments) applies.

ISO 2768-1, *General tolerances — Part 1: Tolerances for linear and angular dimensions without individual tolerance indications*

EN 10025-2, *Hot rolled products of structural steels — Part 2: Technical delivery conditions for non-alloy structural steels*

3 Terms and definitions

For the purposes of this document, the following terms and definitions apply.

3.1

mounting attachment

device comprising of a mast stand and mast clamp which are arranged on the barge in such a way that they can maintain a signal mast in the specified position

3.2

mast stand

device fixed to the deck which accepts the lower part of the signal mast and secures it against rotation about the vertical mast axis

3.3

mast clamp

device which secures the top of the lower portion of the signal mast

3.4

mast lower part

lower part of the signal mast which is inserted into the mounting attachment

4 Technical requirements

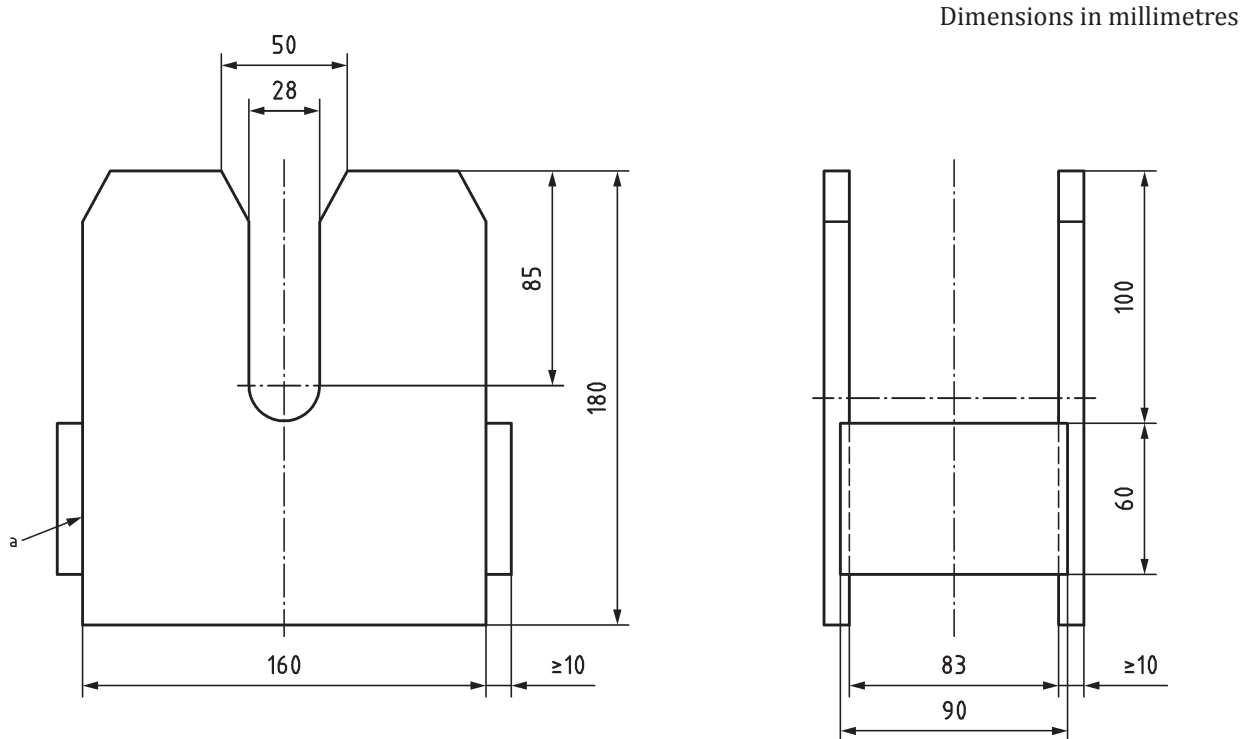
General tolerances: ISO 2768:— c.

The requirements relate to construction, dimensions, design, arrangement, and means of attachment.

4.1 Dimensions

The mounting attachment is not expected to conform to the design illustrated in this International Standard; compliance is only required in the case of the dimensions specified.

4.2 Mast stand



Key

Smooth edges

a Welded.

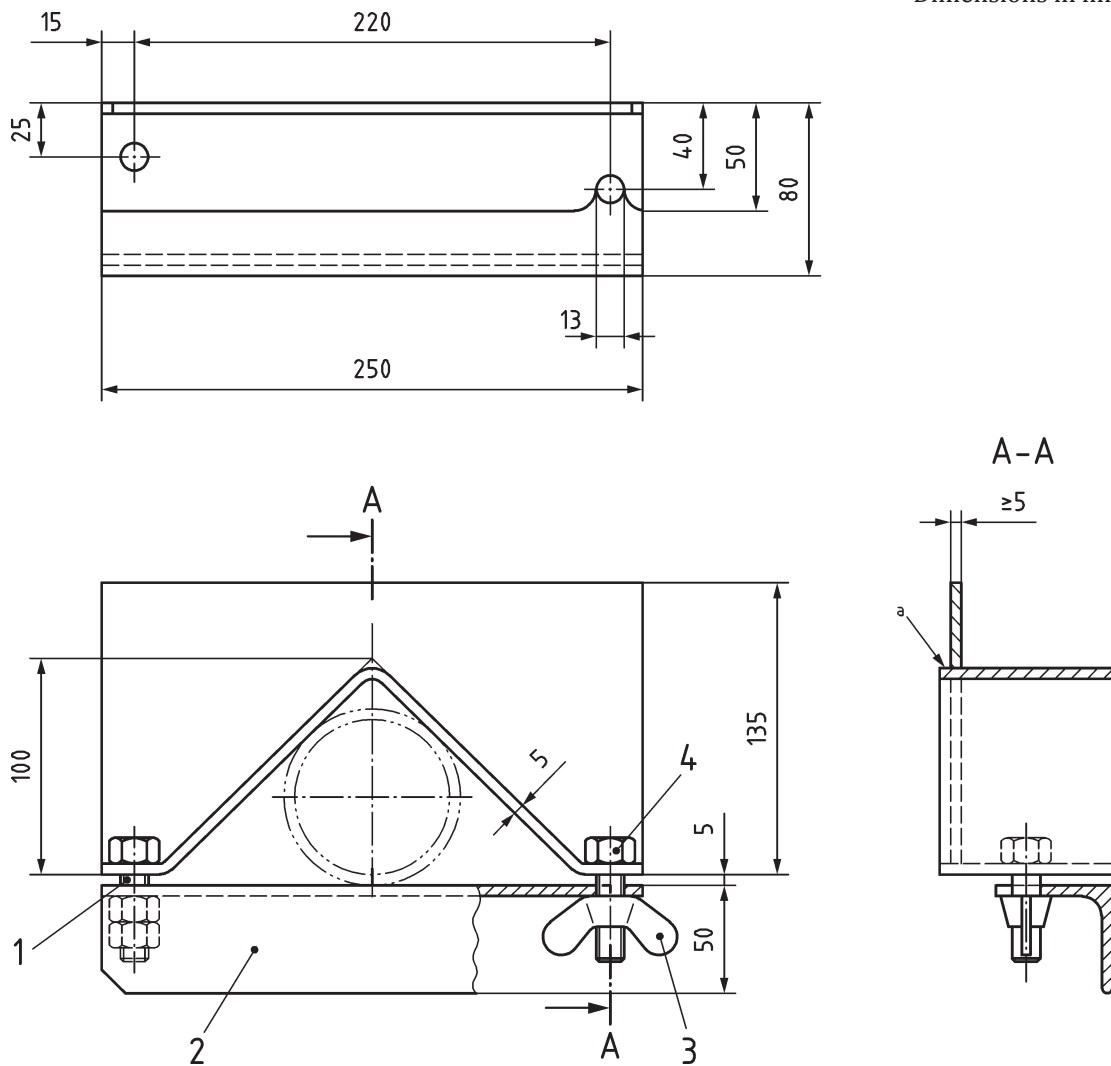
Figure 1 — Mast stand

4.3 Mast clamp

The clamp is shown to be attached using screws and nuts/wing nuts. Any equivalent means of attachment is permitted provided that the mast is held securely.

Only captive screws, nuts, or wing nuts shall be used.

Dimensions in millimetres



Key

View shown without screws or nuts

- 1 screw M 12 × 40 with 2 nuts
- 2 L 50 × 50 × 5
- 3 wingnut M 12
- 4 screw M 12 × 50 welded on
- a Welded.

Figure 2 — Mast clamp

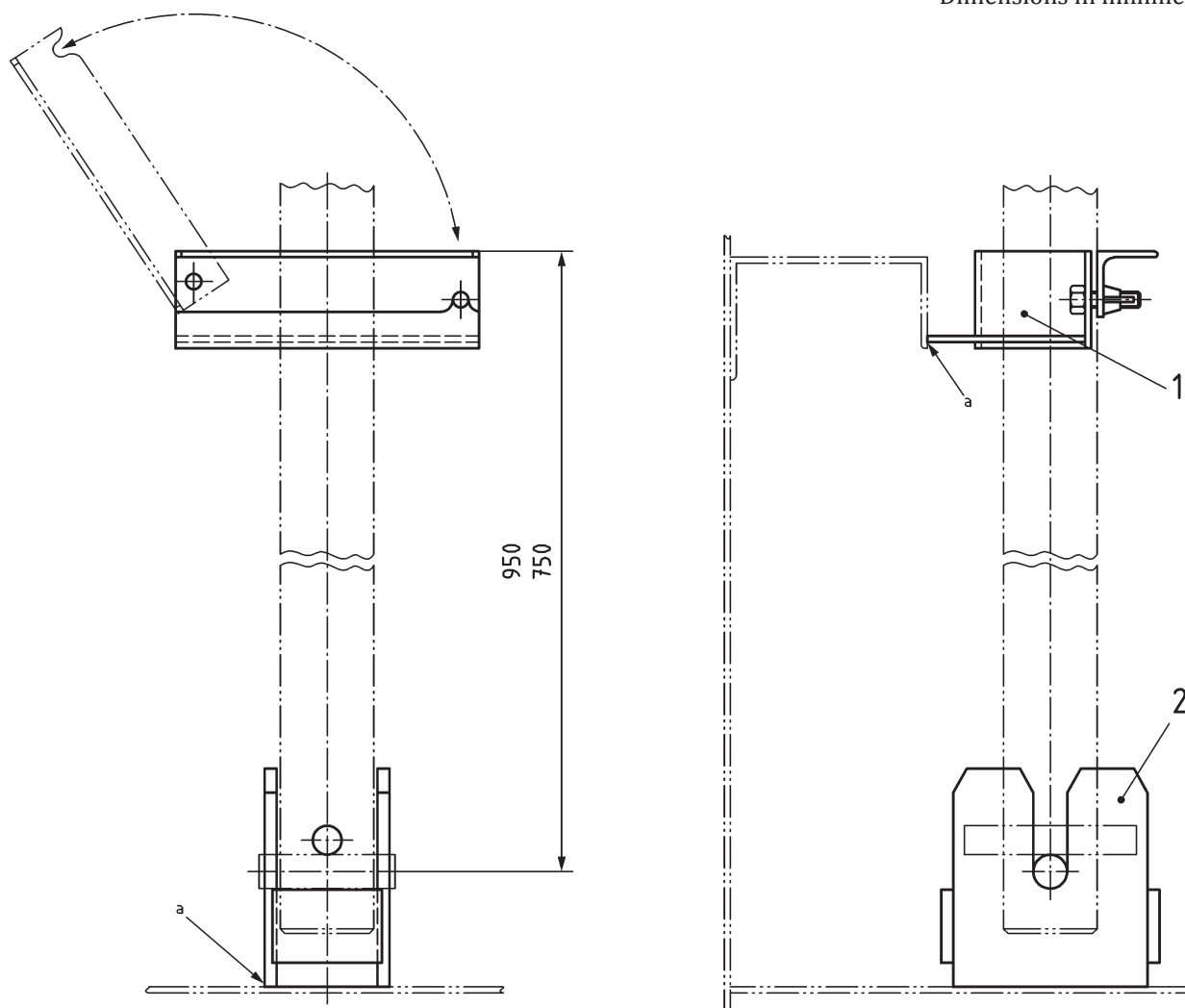
4.4 Mounting attachment

The mounting attachment consists of the mast stand and a mast clamp.

The mast stand shall be positioned so that the signal mast bearing pins are precisely aligned parallel to the longitudinal and transverse axes of the vessel. In addition, the mast stand and mast clamp shall be arranged in such a way that axis of the lower part of the signal mast is perpendicular to the design waterline plane.

The arrangement illustrated in [Figure 3](#) is an example of this.

Dimensions in millimetres



Key

Mast clamp shown without screws or nuts

- 1 mast clamp
- 2 mast stand bearing plate
- a Welded.

Figure 3 — Mounting attachment

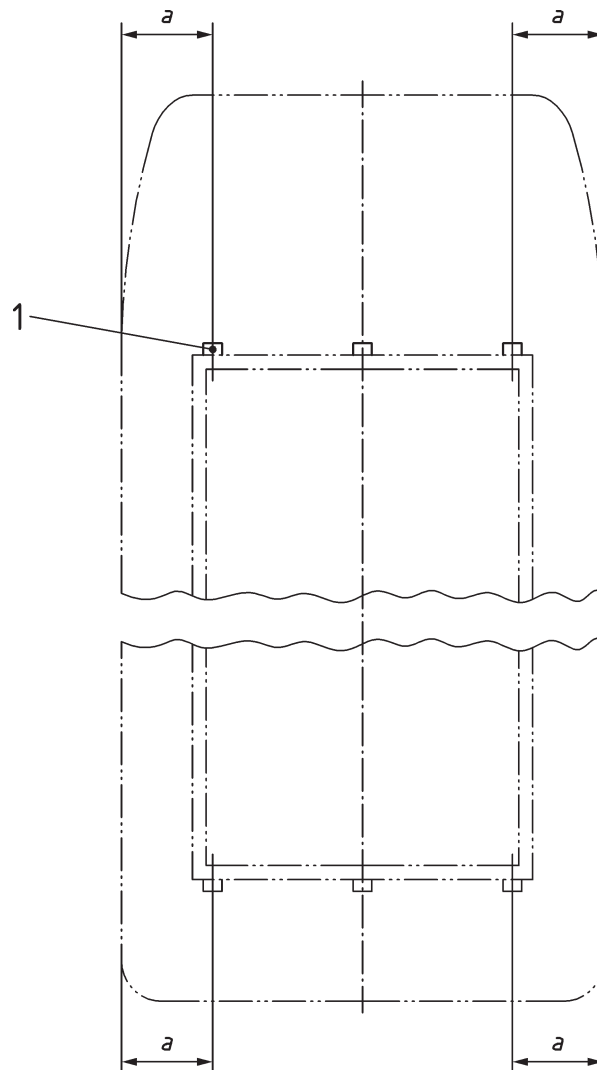
4.5 Mounting attachment arrangement on the push barge

The mounting attachments shall be arranged on the push barge as shown in [Figure 4](#).

The mounting attachments fitted to the vessel sides shall be arranged so that the masts can be mounted parallel to the longitudinal vertical plane of the vessel. For safety reasons, they shall not be positioned within the clear width of the walkway and shall be arranged to ensure an easy mounting of the mast.

The attachments fitted in the centre of the vessel can be rotated by 90° (e.g. in restricted conditions) so that the masts can be mounted parallel to the transverse vertical plane of the vessel.

Dimensions in millimetres



Key

- 1 mounting attachment.
- a $\leq 1\ 000$

Figure 4 — Mounting attachment arrangement on the push barge

4.6 Mast

Only the dimensions of the lower end of the mast (mast lower part) are specified in [Annex A](#). The upper part of the mast, its height, the navigation light arrangement, and other characteristics are not covered by this International Standard. They are governed by the shipping regulations of the corresponding navigation zone.

5 Material

Weldable steel is as specified in EN 10025-2.

The screws, nuts, or bolts used for the clamp shall be made of stainless steel or other non-corrodible materials.

6 Testing

For the purposes of this International Standard, test the technical requirements as specified in this International Standard by visual examination and measurement.

7 Designation

A mounting attachment for demountable signal masts comprising of mast stand ([Figure 1](#)) and mast clamp ([Figure 2](#)) shall have the following designation:

Mounting attachment ISO 7236

Annex A (normative)

Mast lower part

General tolerances: ISO 2768:— c.

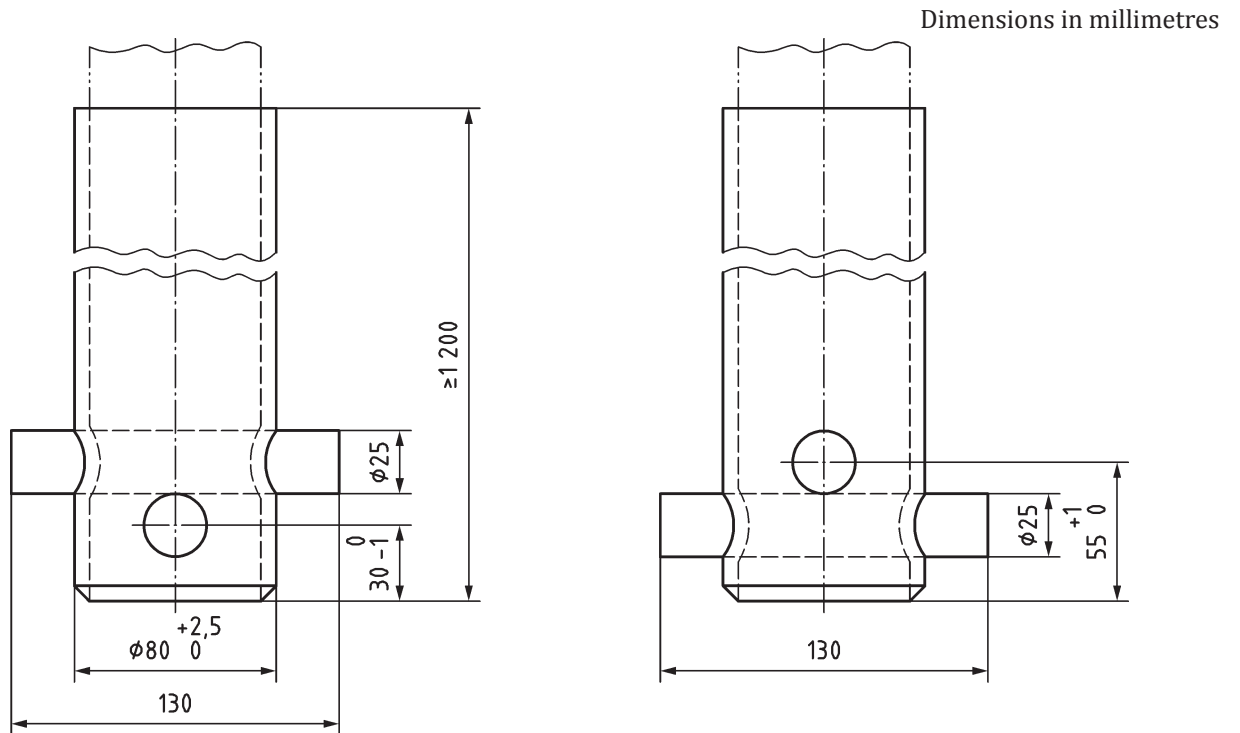


Figure A.1 — Mast lower part

British Standards Institution (BSI)

BSI is the national body responsible for preparing British Standards and other standards-related publications, information and services.

BSI is incorporated by Royal Charter. British Standards and other standardization products are published by BSI Standards Limited.

About us

We bring together business, industry, government, consumers, innovators and others to shape their combined experience and expertise into standards-based solutions.

The knowledge embodied in our standards has been carefully assembled in a dependable format and refined through our open consultation process. Organizations of all sizes and across all sectors choose standards to help them achieve their goals.

Information on standards

We can provide you with the knowledge that your organization needs to succeed. Find out more about British Standards by visiting our website at bsigroup.com/standards or contacting our Customer Services team or Knowledge Centre.

Buying standards

You can buy and download PDF versions of BSI publications, including British and adopted European and international standards, through our website at bsigroup.com/shop, where hard copies can also be purchased.

If you need international and foreign standards from other Standards Development Organizations, hard copies can be ordered from our Customer Services team.

Subscriptions

Our range of subscription services are designed to make using standards easier for you. For further information on our subscription products go to bsigroup.com/subscriptions.

With **British Standards Online (BSOL)** you'll have instant access to over 55,000 British and adopted European and international standards from your desktop. It's available 24/7 and is refreshed daily so you'll always be up to date.

You can keep in touch with standards developments and receive substantial discounts on the purchase price of standards, both in single copy and subscription format, by becoming a **BSI Subscribing Member**.

PLUS is an updating service exclusive to BSI Subscribing Members. You will automatically receive the latest hard copy of your standards when they're revised or replaced.

To find out more about becoming a BSI Subscribing Member and the benefits of membership, please visit bsigroup.com/shop.

With a **Multi-User Network Licence (MUNL)** you are able to host standards publications on your intranet. Licences can cover as few or as many users as you wish. With updates supplied as soon as they're available, you can be sure your documentation is current. For further information, email bsmusales@bsigroup.com.

BSI Group Headquarters

389 Chiswick High Road London W4 4AL UK

Revisions

Our British Standards and other publications are updated by amendment or revision.

We continually improve the quality of our products and services to benefit your business. If you find an inaccuracy or ambiguity within a British Standard or other BSI publication please inform the Knowledge Centre.

Copyright

All the data, software and documentation set out in all British Standards and other BSI publications are the property of and copyrighted by BSI, or some person or entity that owns copyright in the information used (such as the international standardization bodies) and has formally licensed such information to BSI for commercial publication and use. Except as permitted under the Copyright, Designs and Patents Act 1988 no extract may be reproduced, stored in a retrieval system or transmitted in any form or by any means – electronic, photocopying, recording or otherwise – without prior written permission from BSI. Details and advice can be obtained from the Copyright & Licensing Department.

Useful Contacts:

Customer Services

Tel: +44 845 086 9001

Email (orders): orders@bsigroup.com

Email (enquiries): cservices@bsigroup.com

Subscriptions

Tel: +44 845 086 9001

Email: subscriptions@bsigroup.com

Knowledge Centre

Tel: +44 20 8996 7004

Email: knowledgecentre@bsigroup.com

Copyright & Licensing

Tel: +44 20 8996 7070

Email: copyright@bsigroup.com



...making excellence a habit.™