

BS ISO 7210:2013



BSI Standards Publication

Routine analytical cigarette-smoking machine — Additional test methods for machine verification

bsi.

...making excellence a habit.™

National foreword

This British Standard is the UK implementation of ISO 7210:2013. It supersedes BS 5668-2:1997, which is withdrawn.

The UK participation in its preparation was entrusted to Technical Committee AW/40, Tobacco and tobacco products.

A list of organizations represented on this committee can be obtained on request to its secretary.

This publication does not purport to include all the necessary provisions of a contract. Users are responsible for its correct application.

© The British Standards Institution 2013.
Published by BSI Standards Limited 2013.

ISBN 978 0 580 73782 4

ICS 65.160

Compliance with a British Standard cannot confer immunity from legal obligations.

This British Standard was published under the authority of the Standards Policy and Strategy Committee on 31 January 2013.

Amendments issued since publication

Date	Text affected
------	---------------

INTERNATIONAL
STANDARD

BS ISO 7210:2013

ISO
7210

Third edition
2013-01-15

**Routine analytical cigarette-smoking
machine — Additional test methods
for machine verification**

*Machine à fumer analytique de routine pour cigarettes — Méthodes
d'essais complémentaires pour la vérification de la machine*



Reference number
ISO 7210:2013(E)

© ISO 2013



COPYRIGHT PROTECTED DOCUMENT

© ISO 2013

All rights reserved. Unless otherwise specified, no part of this publication may be reproduced or utilized otherwise in any form or by any means, electronic or mechanical, including photocopying, or posting on the internet or an intranet, without prior written permission. Permission can be requested from either ISO at the address below or ISO's member body in the country of the requester.

ISO copyright office
Case postale 56 • CH-1211 Geneva 20
Tel. + 41 22 749 01 11
Fax + 41 22 749 09 47
E-mail copyright@iso.org
Web www.iso.org

Published in Switzerland

Contents

Page

Foreword	iv
1 Scope	1
2 Normative references	1
3 Terms and definitions	1
4 Determination of pressure drop	2
4.1 Principle.....	2
4.2 Apparatus.....	2
4.3 Test atmosphere.....	3
4.4 Procedure.....	3
4.5 Expression of results.....	4
5 Determination of significant puff profile parameters	4
5.1 Principle.....	4
5.2 Apparatus.....	4
6 Verification of restricted smoking	6
6.1 Principle.....	6
6.2 Apparatus.....	6
6.3 Procedure.....	6
6.4 Expression of results.....	7

Foreword

ISO (the International Organization for Standardization) is a worldwide federation of national standards bodies (ISO member bodies). The work of preparing International Standards is normally carried out through ISO technical committees. Each member body interested in a subject for which a technical committee has been established has the right to be represented on that committee. International organizations, governmental and non-governmental, in liaison with ISO, also take part in the work. ISO collaborates closely with the International Electrotechnical Commission (IEC) on all matters of electrotechnical standardization.

International Standards are drafted in accordance with the rules given in the ISO/IEC Directives, Part 2.

The main task of technical committees is to prepare International Standards. Draft International Standards adopted by the technical committees are circulated to the member bodies for voting. Publication as an International Standard requires approval by at least 75 % of the member bodies casting a vote.

Attention is drawn to the possibility that some of the elements of this document may be the subject of patent rights. ISO shall not be held responsible for identifying any or all such patent rights.

ISO 7210 was prepared by Technical Committee ISO/TC 126, *Tobacco and tobacco products*, Subcommittee SC 1, *Physical and dimensional tests*.

This third edition cancels and replaces the second edition (ISO 7210:1997), which has been technically revised.

Routine analytical cigarette-smoking machine — Additional test methods for machine verification

1 Scope

This International Standard specifies additional test methods for routine analytical cigarette-smoking machines intended to check the conformity of these machines with ISO 3308:2012, Clause 4.

It only establishes additional test methods for smoking machines and does not deal with actual smoking, which is described in other International Standards.

It is composed of three sections relating to:

- the determination of pressure drop ([Clause 4](#));
- the determination of significant puff profile parameters ([Clause 5](#));
- the verification of restricted smoking ([Clause 6](#)).

NOTE There are more possibilities to determine the aforementioned parameters. Systems giving the same results and accuracies can be used. The certificate of compliance with this International Standard may be obtained from machine manufacturer. The frequency to carry out these additional test methods for smoking machines' verification is not part of the scope of this International Standard.

2 Normative references

The following referenced documents are indispensable for the application of this document. For dated references, only the edition cited applies. For undated references, the latest edition of the referenced document (including any amendments) applies.

ISO 3308:2012, *Routine analytical cigarette-smoking machine — Definitions and standard conditions*

ISO 3402, *Tobacco and tobacco products — Atmosphere for conditioning and testing*

3 Terms and definitions

For the purposes of this International Standard, the following terms and definitions apply.

3.1

pressure drop

static pressure difference between the two ends of a pneumatic circuit (of a smoking machine) when it is traversed by an air flow under steady conditions in which the measured volumetric flow, under standard conditions, at the output end is 17,5 ml/s.

3.2

puff profile

flow rate measured directly behind the butt end of the cigarette, and depicted graphically as a function of time

Note 1 to entry: For the determination of the puff profile, the cigarette could be replaced by a suitable device with a known pressure drop similar to the pressure drop of the cigarette.

3.3

restricted smoking

condition that exists when the butt end of a cigarette is closed to the atmosphere between successive puffs

**3.4
puff duration**

interval of time during which the port of a smoking machine is connected to the suction mechanism

**3.5
puff volume**

volume leaving the butt end of a cigarette and passing through the smoke trap of a smoking machine

**3.6
smoulder stream smoke**

all smoke which leaves the butt end of the cigarette during the interval of time between successive puffs

**3.7
port**

aperture of the suction mechanism through which a puff is drawn and to which is attached a smoke trap

**3.8
channel**

element of a smoking machine consisting of one or more cigarette holders, one trap and a means of drawing a puff through the trap

4 Determination of pressure drop

4.1 Principle

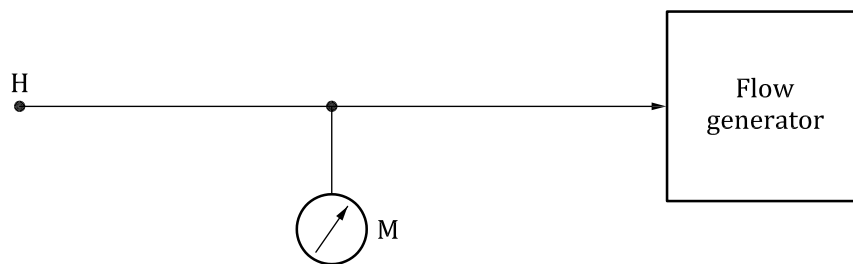
Measurement, under well-specified air flow conditions, of the pressure drop of a smoking machine by means of an appropriate manometer.

4.2 Apparatus

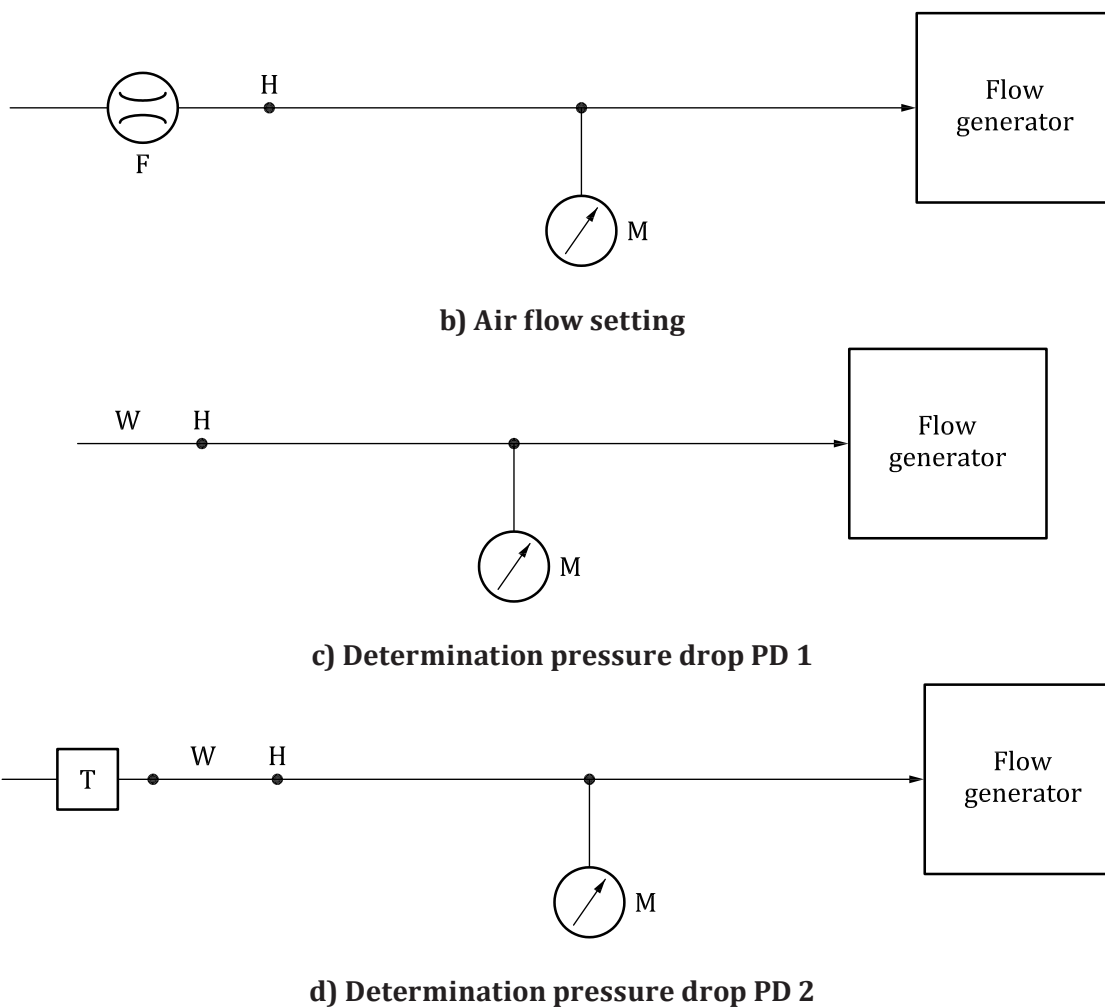
The whole of the flow path between the butt end of the cigarette and the suction mechanism shall offer the least possible resistance and its pressure drop shall not exceed 300 Pa.

The test apparatus shall be capable of:

- sucking a constant flow of air which is unaffected by the pressure drop of the system under test;
- measuring the pressure drop with known and sufficient accuracy.



a) Zero setting manometer



Key

- H test head point
- F flowmeter
- W wide-bore tubing
- T smoking machine under test
- M manometer

Figure 1 — Pneumatic circuit of a typical apparatus

NOTE Arrows indicate the direction of air flow.

4.3 Test atmosphere

All measurements shall be carried out under standard ambient conditions of temperature and relative humidity as specified in ISO 3402.

4.4 Procedure

4.4.1 General

The flow of air through the smoking machine shall always be in the same direction as during the puffing cycle, i.e. from the cigarette to the suction source. The air used for measurement shall be from the test atmosphere.

4.4.2 Testing

4.4.2.1 Connect the manometer M as indicated in [Figure 1a](#)) and set it to zero.

4.4.2.2 Connect the flowmeter F as indicated in [Figure 1b](#)) and establish an air flow of $17,5 \text{ ml/s} \pm 0,5 \text{ ml/s}$.

4.4.2.3 Disconnect the flowmeter F and if needed in regards to [4.4.2.4](#) attach a suitable length of wide-bore tubing W to the test head point H as indicated in [Figure 1c](#)). Read the pressure, if any, on the manometer M. Record the value as PD 1.

4.4.2.4 Attach the free end of the wide-bore tubing W to the point in the smoking machine from which the puffing source was disconnected as indicated in [Figure 1d](#)). Read the pressure on manometer M. Record the value as PD 2.

4.4.2.5 Calculate the pressure drop (PD 2 – PD 1).

4.4.2.6 Repeat the operation for each channel of the smoking machine.

4.5 Expression of results

The following values shall be recorded:

- the pressure drop for each channel, in pascals;
- the test atmosphere used.

5 Determination of significant puff profile parameters

5.1 Principle

Continuous measurement of the flow rate of air of a puff through a pressure drop device of $1\,000 \text{ Pa} \pm 50 \text{ Pa}$ (see ISO 3308:2012, 4.3).

5.2 Apparatus

The apparatus shall comprise the elements shown in the principle diagram ([Figure 2](#)), i.e. the diagram of elements required for the two alternative measuring systems, A and B, with two different levels of sophistication.

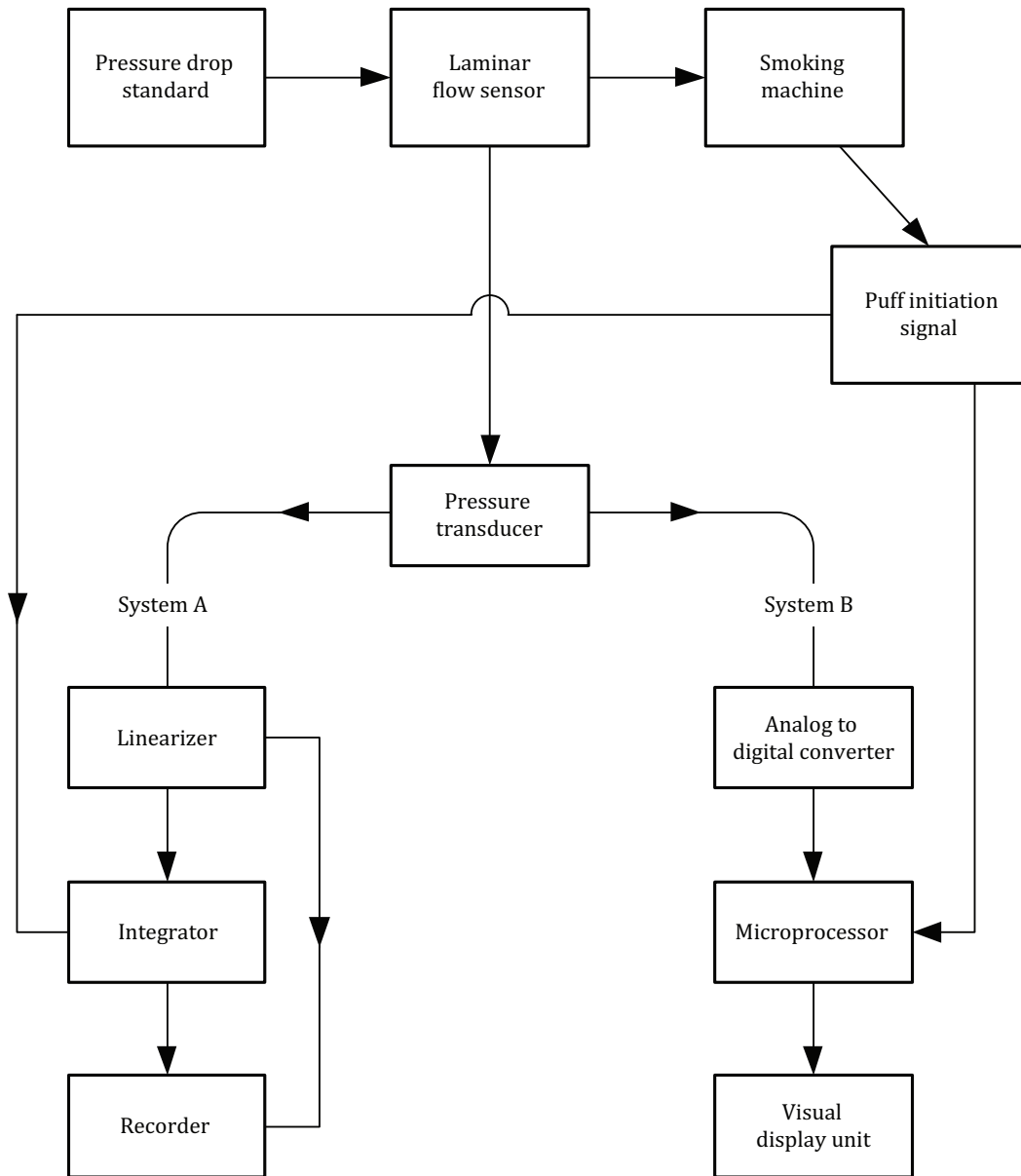


Figure 2 — Principle diagram

5.2.1 System A

The signal delivered by the pressure transducer is linearized by appropriate circuits and transmitted to an integrator and a recording apparatus.

The system can record a picture of the puff profile and measure its volume.

5.2.2 System B

This system uses digital conversion and a computer to produce the same information as it is given by system A.

5.2.3 Requirements for both systems

The device shall not increase the pressure drop of the system above the limit of 300 Pa and the overall gain and response of the system shall be sufficient to visualize the puff profile and determine its significant parameters.

A sufficient result will be achieved by the use of elements that fulfil the following conditions:

- laminar flow element having a nominal pressure drop of 100 Pa \pm 10 Pa at a flow of 17,5 ml/s;
- pressure transducer with a suitable range, an accuracy of \pm 5 Pa or better and a minimal response frequency of 1 kHz.

The above apparatus provides the means to obtain flow rate and time profiles for puffing as shown in ISO 3308:2012, Annex C.

NOTE Measurement of puff volume, by either system A or system B, can only be a secondary measurement following calibration by reference to a primary device such as a soap film burette as described in ISO 3308.

5.2.4 Expression of results

The following results need to be reported:

- total drawn puff volume expressed in millilitres;
- maximum flow rate expressed in millilitres per second;
- time between starting and reaching the maximum flow rate expressed in seconds;
- volume drawn after the time the puffing source ceases to apply suction expressed in millilitres;
- total puff duration time in seconds.

The target values for the above parameters are given in ISO 3308:2012, Annex C.

6 Verification of restricted smoking

6.1 Principle

Measurement of the volume of the smoulder stream smoke between two puffs for machines of discontinuous function or between two suction strokes for machines of continuous function.

NOTE For smoking machines with permanent connection of the port to the suction device, this test is not necessary.

6.2 Apparatus

Apparatus permitting an assembly as shown in [Figure 3](#), so that:

- the length of a soap film bubble flowmeter does not exceed 12 cm;
- there is close contact between the smoke port or the cigarette holder, the soap film bubble flowmeter and the cigarette.

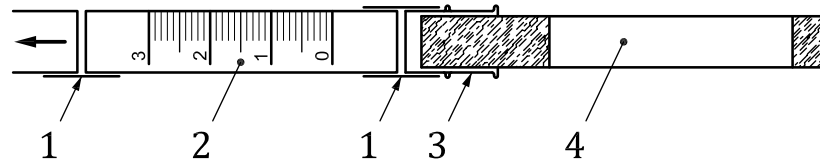
6.3 Procedure

Smoke a cigarette up to its first half without using the test unit. Introduce and adjust a soap bubble in the soap film bubble flowmeter as described in the suppliers manual. Connect the test unit to the smoke port or cigarette holder and insert the cigarette to it. Carry out the test during smouldering of

the second half of the total length of the cigarette. On linear machines the test should be performed for at least 1 min. On rotary machines it should be performed over a full rotation.

6.4 Expression of results

Note the flow rate of the smoulder stream smoke, in millilitres per minute for each channel of the smoking machine. The result shall not exceed 1 ml/min.



Key

- 1 rubber connection
- 2 soap film bubble flowmeter
- 3 cigarette holder or glass tube
- 4 cigarette

Figure 3 — Diagram of test apparatus for restricted smoking

British Standards Institution (BSI)

BSI is the national body responsible for preparing British Standards and other standards-related publications, information and services.

BSI is incorporated by Royal Charter. British Standards and other standardization products are published by BSI Standards Limited.

About us

We bring together business, industry, government, consumers, innovators and others to shape their combined experience and expertise into standards-based solutions.

The knowledge embodied in our standards has been carefully assembled in a dependable format and refined through our open consultation process. Organizations of all sizes and across all sectors choose standards to help them achieve their goals.

Information on standards

We can provide you with the knowledge that your organization needs to succeed. Find out more about British Standards by visiting our website at bsigroup.com/standards or contacting our Customer Services team or Knowledge Centre.

Buying standards

You can buy and download PDF versions of BSI publications, including British and adopted European and international standards, through our website at bsigroup.com/shop, where hard copies can also be purchased.

If you need international and foreign standards from other Standards Development Organizations, hard copies can be ordered from our Customer Services team.

Subscriptions

Our range of subscription services are designed to make using standards easier for you. For further information on our subscription products go to bsigroup.com/subscriptions.

With **British Standards Online (BSOL)** you'll have instant access to over 55,000 British and adopted European and international standards from your desktop. It's available 24/7 and is refreshed daily so you'll always be up to date.

You can keep in touch with standards developments and receive substantial discounts on the purchase price of standards, both in single copy and subscription format, by becoming a **BSI Subscribing Member**.

PLUS is an updating service exclusive to BSI Subscribing Members. You will automatically receive the latest hard copy of your standards when they're revised or replaced.

To find out more about becoming a BSI Subscribing Member and the benefits of membership, please visit bsigroup.com/shop.

With a **Multi-User Network Licence (MUNL)** you are able to host standards publications on your intranet. Licences can cover as few or as many users as you wish. With updates supplied as soon as they're available, you can be sure your documentation is current. For further information, email bsmusales@bsigroup.com.

BSI Group Headquarters

389 Chiswick High Road London W4 4AL UK

Revisions

Our British Standards and other publications are updated by amendment or revision.

We continually improve the quality of our products and services to benefit your business. If you find an inaccuracy or ambiguity within a British Standard or other BSI publication please inform the Knowledge Centre.

Copyright

All the data, software and documentation set out in all British Standards and other BSI publications are the property of and copyrighted by BSI, or some person or entity that owns copyright in the information used (such as the international standardization bodies) and has formally licensed such information to BSI for commercial publication and use. Except as permitted under the Copyright, Designs and Patents Act 1988 no extract may be reproduced, stored in a retrieval system or transmitted in any form or by any means – electronic, photocopying, recording or otherwise – without prior written permission from BSI. Details and advice can be obtained from the Copyright & Licensing Department.

Useful Contacts:

Customer Services

Tel: +44 845 086 9001

Email (orders): orders@bsigroup.com

Email (enquiries): cservices@bsigroup.com

Subscriptions

Tel: +44 845 086 9001

Email: subscriptions@bsigroup.com

Knowledge Centre

Tel: +44 20 8996 7004

Email: knowledgecentre@bsigroup.com

Copyright & Licensing

Tel: +44 20 8996 7070

Email: copyright@bsigroup.com



...making excellence a habit.™