

BS ISO 7136:2006



BSI Standards Publication

Earth-moving machinery — Pipelayers — Terminology and commercial specifications

National foreword

This British Standard is the UK implementation of ISO 7136:2006. It supersedes BS 6914-5:1999 which is withdrawn.

The UK participation in its preparation was entrusted to Technical Committee B/513/1, Earth moving machinery (International).

A list of organizations represented on this committee can be obtained on request to its secretary.

This publication does not purport to include all the necessary provisions of a contract. Users are responsible for its correct application.

© The British Standards Institution 2016. Published by BSI Standards Limited 2016

ISBN 978 0 580 95535 8

ICS 01.040.53; 53.100

Compliance with a British Standard cannot confer immunity from legal obligations.

This British Standard was published under the authority of the Standards Policy and Strategy Committee on 31 August 2016.

Amendments issued since publication

Date	Text affected
------	---------------

INTERNATIONAL STANDARD

BS ISO 7136:2006

ISO
7136

Third edition
2006-05-01

Earth-moving machinery — Pipelayers — Terminology and commercial specifications

*Engins de terrassement — Tracteurs poseurs de canalisations —
Terminologie et spécifications commerciales*



Reference number
ISO 7136:2006(E)

© ISO 2006

PDF disclaimer

This PDF file may contain embedded typefaces. In accordance with Adobe's licensing policy, this file may be printed or viewed but shall not be edited unless the typefaces which are embedded are licensed to and installed on the computer performing the editing. In downloading this file, parties accept therein the responsibility of not infringing Adobe's licensing policy. The ISO Central Secretariat accepts no liability in this area.

Adobe is a trademark of Adobe Systems Incorporated.

Details of the software products used to create this PDF file can be found in the General Info relative to the file; the PDF-creation parameters were optimized for printing. Every care has been taken to ensure that the file is suitable for use by ISO member bodies. In the unlikely event that a problem relating to it is found, please inform the Central Secretariat at the address given below.

© ISO 2006

All rights reserved. Unless otherwise specified, no part of this publication may be reproduced or utilized in any form or by any means, electronic or mechanical, including photocopying and microfilm, without permission in writing from either ISO at the address below or ISO's member body in the country of the requester.

ISO copyright office
Case postale 56 • CH-1211 Geneva 20
Tel. + 41 22 749 01 11
Fax + 41 22 749 09 47
E-mail copyright@iso.org
Web www.iso.org

Contents

Page

Foreword.....	iv
1 Scope	1
2 Normative references	1
3 Terms and definitions	1
4 Nomenclature	13
5 Commercial literature specifications (SI units)	15

Foreword

ISO (the International Organization for Standardization) is a worldwide federation of national standards bodies (ISO member bodies). The work of preparing International Standards is normally carried out through ISO technical committees. Each member body interested in a subject for which a technical committee has been established has the right to be represented on that committee. International organizations, governmental and non-governmental, in liaison with ISO, also take part in the work. ISO collaborates closely with the International Electrotechnical Commission (IEC) on all matters of electrotechnical standardization.

International Standards are drafted in accordance with the rules given in the ISO/IEC Directives, Part 2.

The main task of technical committees is to prepare International Standards. Draft International Standards adopted by the technical committees are circulated to the member bodies for voting. Publication as an International Standard requires approval by at least 75 % of the member bodies casting a vote.

Attention is drawn to the possibility that some of the elements of this document may be the subject of patent rights. ISO shall not be held responsible for identifying any or all such patent rights.

ISO 7136 was prepared by Technical Committee ISO/TC 127, *Earth-moving machinery*, Subcommittee SC 4, *Commercial nomenclature, classification and rating*.

This third edition cancels and replaces the second edition (ISO 7136:1998), which has been technically revised.

Earth-moving machinery — Pipelayers — Terminology and commercial specifications

1 Scope

This International Standard establishes terminology and the content of commercial literature specifications for self-propelled pipelayers and their equipment. It is applicable to pipelayers as defined in ISO 6165.

2 Normative references

The following referenced documents are indispensable for the application of this document. For dated references, only the edition cited applies. For undated references, the latest edition of the referenced document (including any amendments) applies.

ISO 6014, *Earth-moving machinery — Determination of ground speed*

ISO 6016:1998, *Earth-moving machinery — Methods of measuring the masses of whole machines, their equipment and components*

ISO 6165:2006, *Earth-moving machinery — Basic types — Identification and terms and definitions*

ISO 6746 (all parts), *Earth-moving machinery — Definitions of dimensions and codes*

ISO 9249, *Earth-moving machinery — Engine test code — Net power*

3 Terms and definitions

For the purposes of this document, the terms and definitions given in ISO 6165 and the following apply.

3.1 General

3.1.1

pipelayer

⟨pipelayers with rigid upper structure⟩ self-propelled crawler or wheeled machine, having pipe-laying equipment with main frame, load-hoist mechanism, vertically pivotable side boom and counterweight, primarily designed to handle and lay pipes

[ISO 6165:2006, definition 4.11]

3.1.2
rotating pipelayer

self-propelled crawler or wheeled machine, having pipe-laying equipment with main frame, load hoist mechanism with either a load hoist drum or a winch, vertically pivotable boom, fitted on a rotating upper structure, and counterweight, primarily designed to handle and lay pipes

[ISO 6165:2006, definition 4.12]

3.1.3
side boom

equipment added to a tractor or a loader (wheel or crawler type machine), which is designed to handle and lay pipes and carry pipe-laying equipment

NOTE The equipment includes boom and load hoist mechanisms and a vertically pivotable side boom. It can be with or without counterweights.

3.1.4
rotating upper structure

upper portion of the machine, capable of at least 90° rotation around a vertical axis passing through the longitudinal axis of the machine

NOTE It includes machine cab, boom and counterweight(s).

3.1.5
base machine

machine with a cab or canopy and operator-protective structures if required, without equipment and attachments but possessing the necessary mountings for such equipment and attachments

See Figure 1.

3.1.6
equipment

set of components (boom and counterweights) mounted onto the base machine to fulfil the primary design function of a pipelayer

NOTE Equipment for pipelayers includes load hoist mechanisms with either a load hoist drum or a winch and a vertically pivotable side boom.

3.1.7
boom

fixed length structural member that supports the load

3.1.8
counterweight

any additional removable weight and its removable (or fixed) support added to increase tipping load

NOTE There are two types of counterweights, defined in 3.1.8.1 and 3.1.8.2.

3.1.8.1
adjustable counterweight

that portion of the counterweight that is movable

3.1.8.2
nonadjustable counterweight

counterweight fixed in one location on the machine

3.1.9
attachment

assembly of components that can be mounted on the base machine, or equipment, for a specific use

3.1.10

component

part or an assembly of parts of a base machine, equipment or attachment

3.2 Masses

3.2.1

operating mass

mass of the base machine with equipment and empty attachment as specified by the manufacturer, and with the operator (75 kg), full fuel tank and all fluid systems at the levels specified by the manufacturer

[ISO 6016:1998, definition 3.2.1]

3.2.2

shipping mass

mass of the base machine without an operator, and with fuel level at 10 % of tank capacity, all fluid systems at their levels specified by the manufacturer and with or without equipment, attachment, cab, canopy, ROPS and/or FOPS, wheels and counterweights as stated by the manufacturer

[ISO 6016:1998, definition 3.2.5]

3.3 Dimensions

For definitions and codes of dimensions strictly related to pipelayers, the following apply. See also ISO 6746-1 and ISO 6746-2 for definitions of dimensions and codes.

3.3.1

overall width without counterweight

$W1$

overall width of the machine with the boom, counterweight, and counterweight support removed (if removable)

See Figure 1.

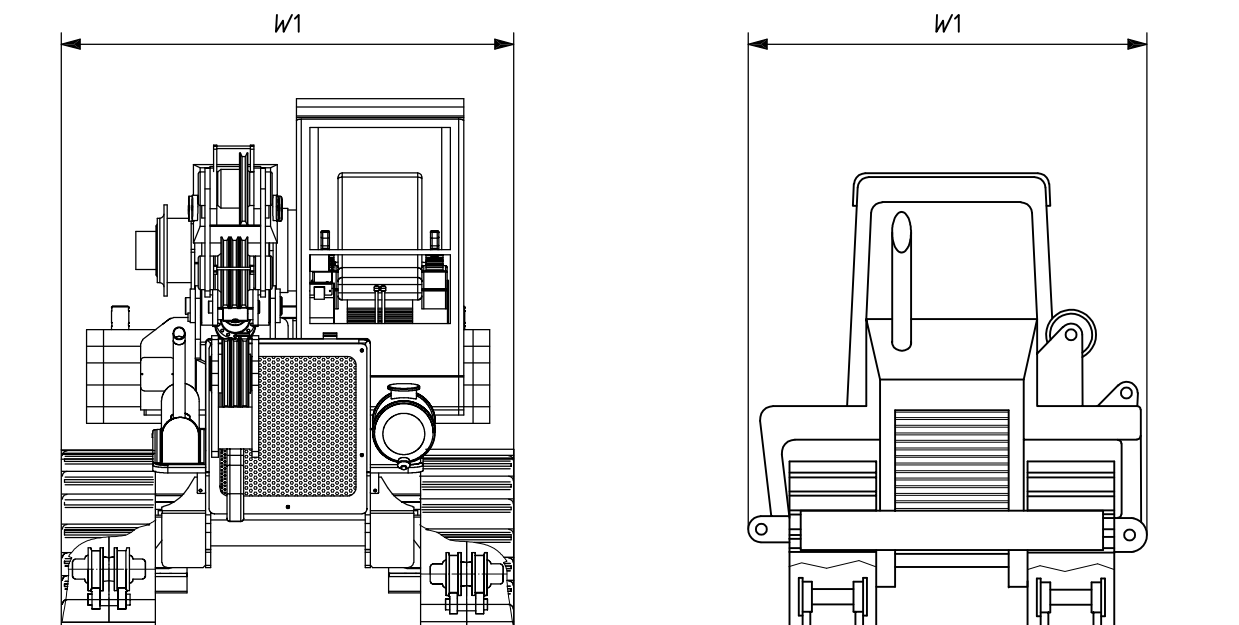


Figure 1 — Dimension $W1$

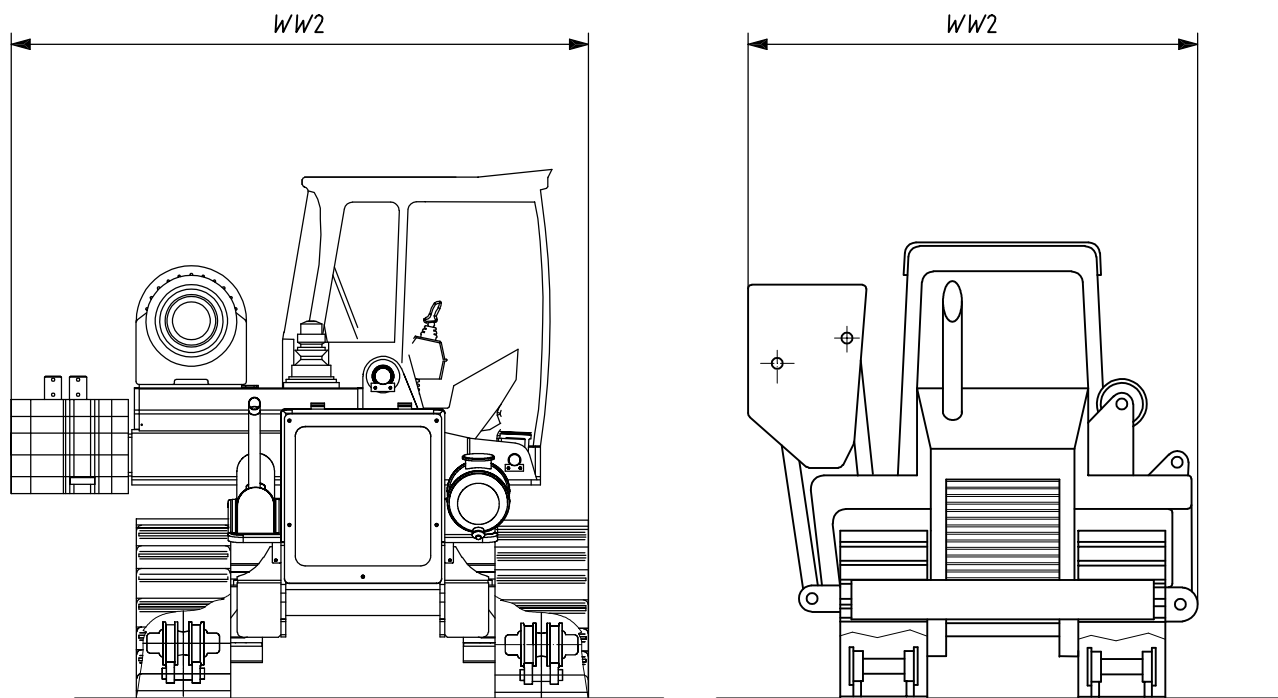
3.3.2
width with counterweight retracted

WW2

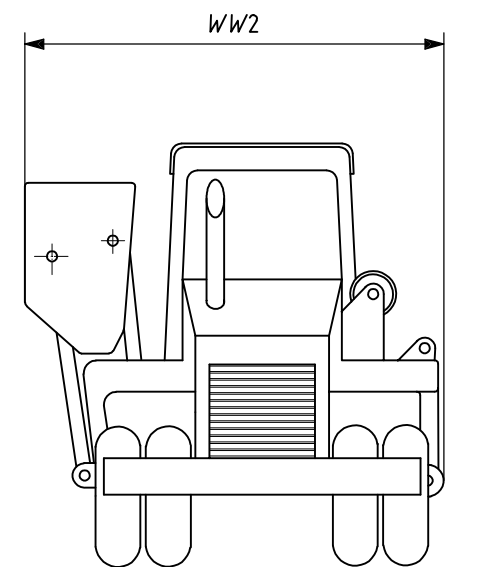
overall width of the machine with the boom removed and the adjustable counterweight retracted

NOTE The rotating upper structure is at 90°.

See Figure 2 a) and b).



a) Dimension *WW2* for crawler machine



b) Dimension *WW2* for wheeled machine

Figure 2 — Dimension *WW2* for wheeled and crawler machines

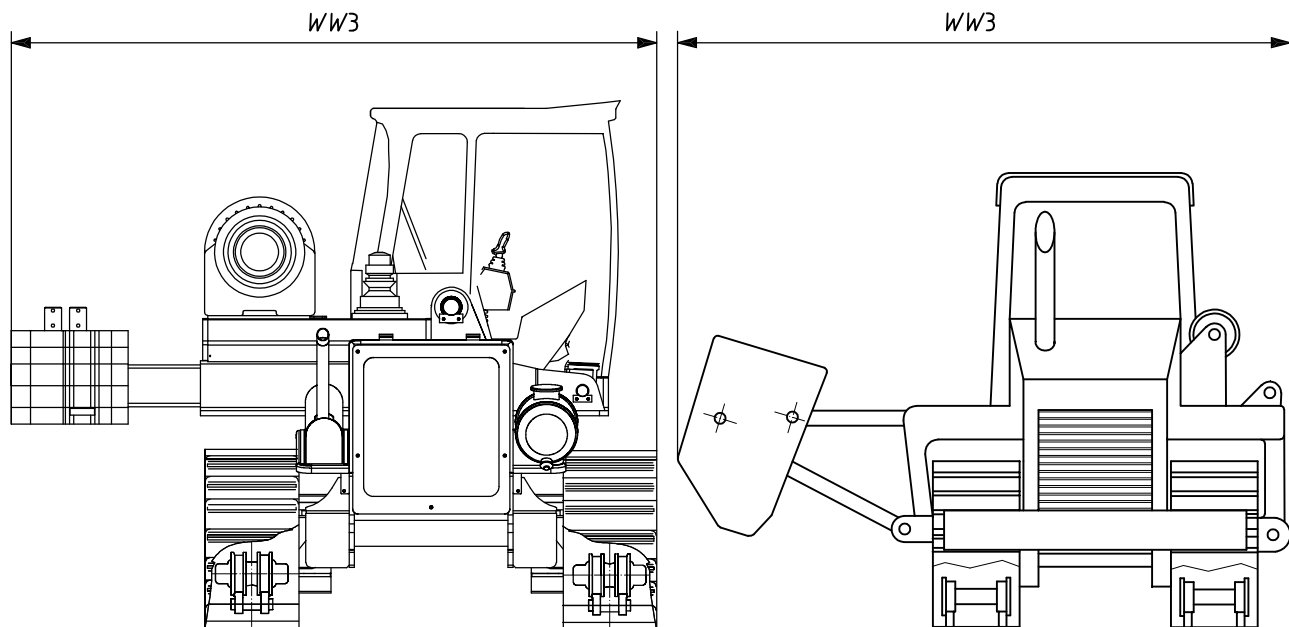
3.3.3
width with counterweight extended

WW3

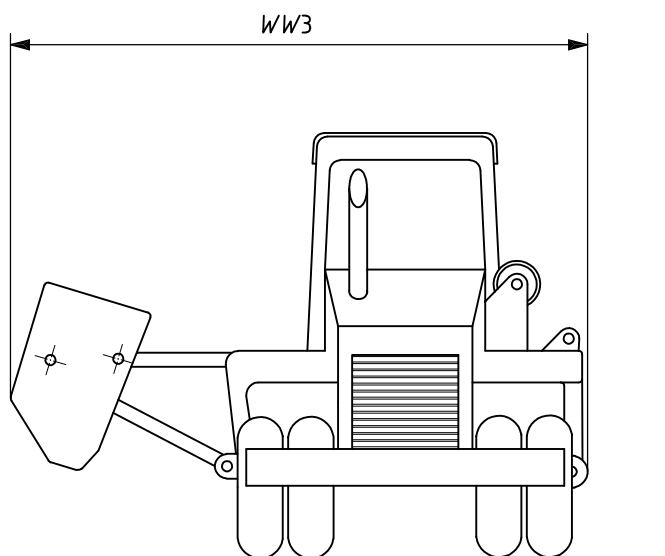
overall width of the machine with the boom removed and the adjustable counterweight extended

NOTE The rotating upper structure is at 90°.

See Figure 3 a) and b).



a) Dimension *WW3* for crawler machine



b) Dimension *WW3* for wheeled machine

Figure 3 — Dimension *WW3* for wheeled and crawler machines

3.3.4
load overhang distance

WW4

(crawler machine) horizontal and perpendicular distance from the lift point line to the outer edge of the outer track link rail on the boom side of the machine

NOTE The rotating upper structure is positioned with the boom centreline perpendicular to the machine longitudinal axis.

See Figure 4.

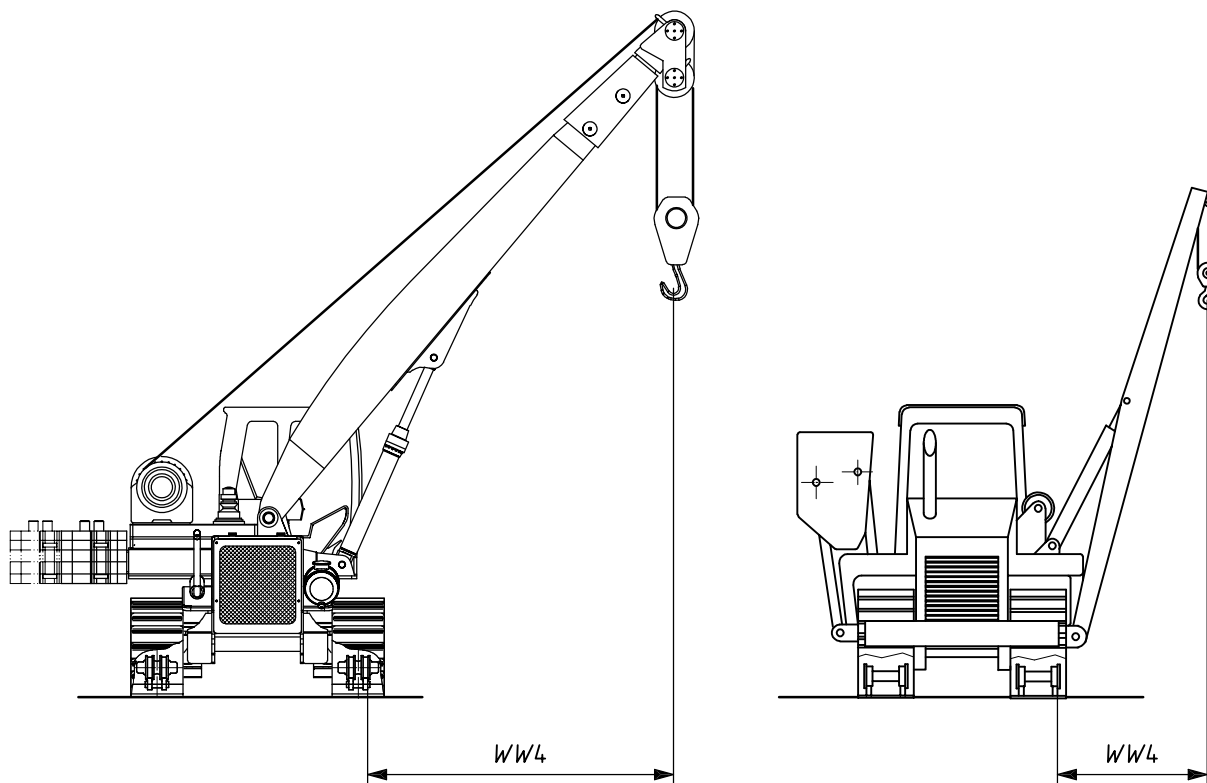


Figure 4 — Dimension *WW4* for crawler machine

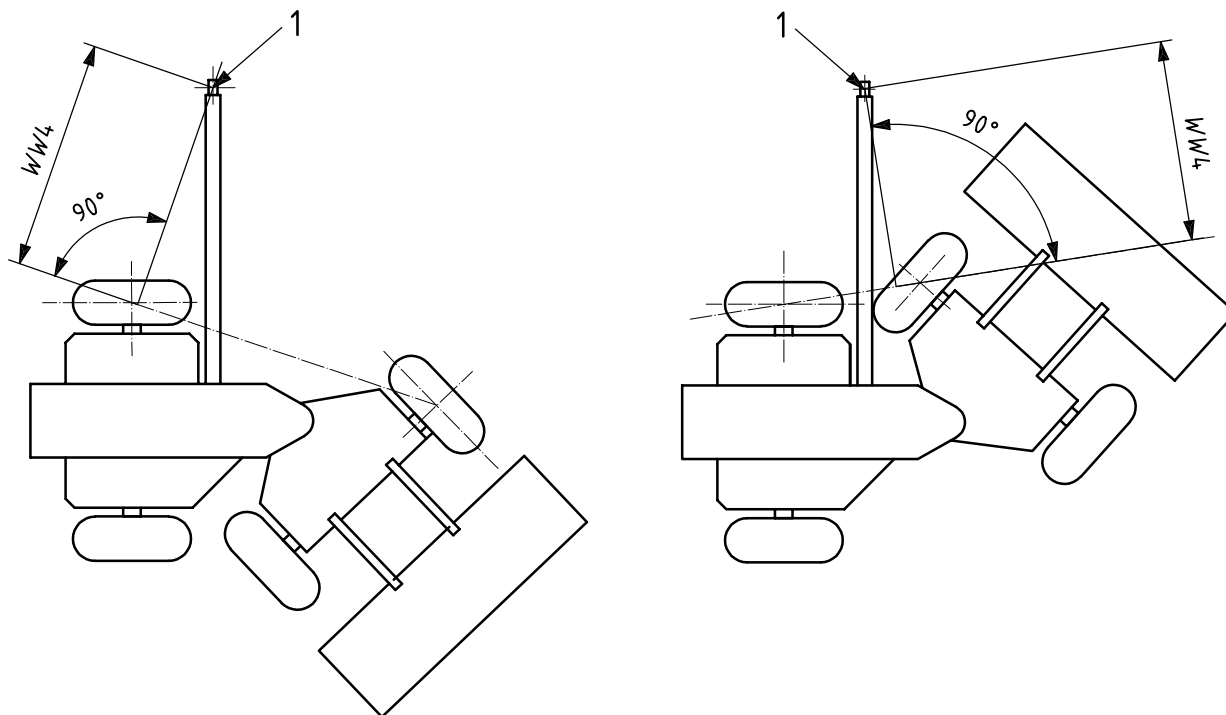
3.3.5
load overhang distance

WW4

(wheeled machine) horizontal and perpendicular distance from the lift point line to a line connecting the centreline of the front and rear tires on the boom side of the machine

NOTE The rotating upper structure is positioned with the boom centreline perpendicular to the machine longitudinal axis.

See Figure 5.



a) Articulated wheeled tractor steered away from boom

b) Articulated wheeled tractor steered toward boom

Key

1 lift point

Figure 5 — Dimension $WW4$ for wheeled machine

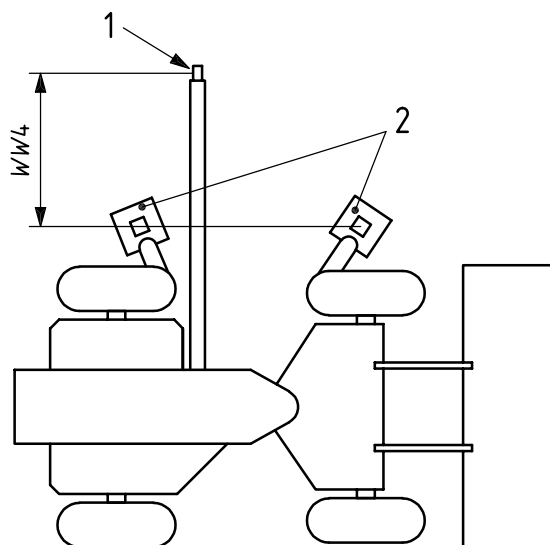
3.3.6

load overhang distance

$WW4$

(machine with outriggers) horizontal and perpendicular distance from the lift point to a line connecting the centreline of the outrigger pads in their most favourable position

See Figure 6.



Key

- 1 lift point
- 2 outriggers

Figure 6 — Dimension $WW4$ for machine with outriggers steered straight

**3.3.7
length of boom**

LL1
straight-line distance between the centreline of the boom foot pivot and the centreline of the upper load block pivot

See Figure 7.

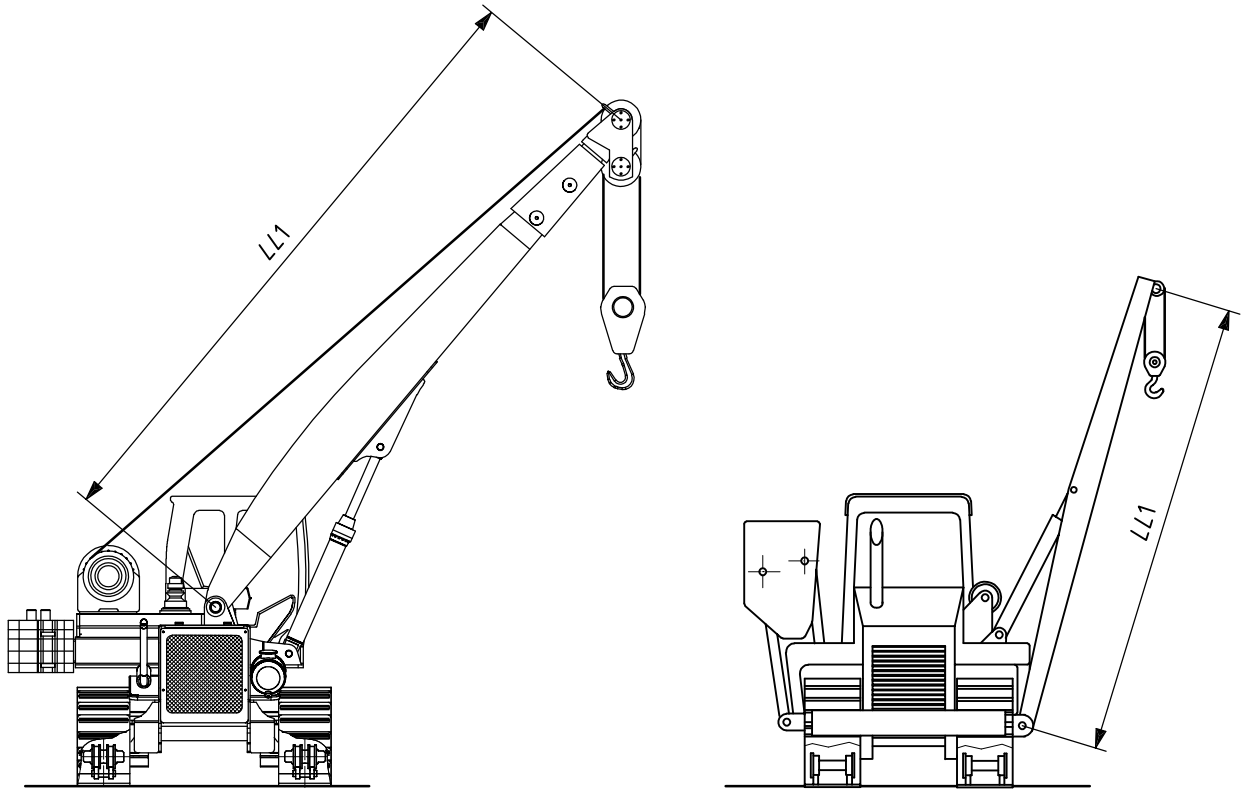


Figure 7 — Dimension $LL1$

3.3.8
shipping height

$H3$

<crawler machine> height from the tip of the grouser to the highest point on the machine without the boom, counterweight, exhaust pipe, air cleaner inlet pipe or other easily removable components (if applicable)

See Figure 8.

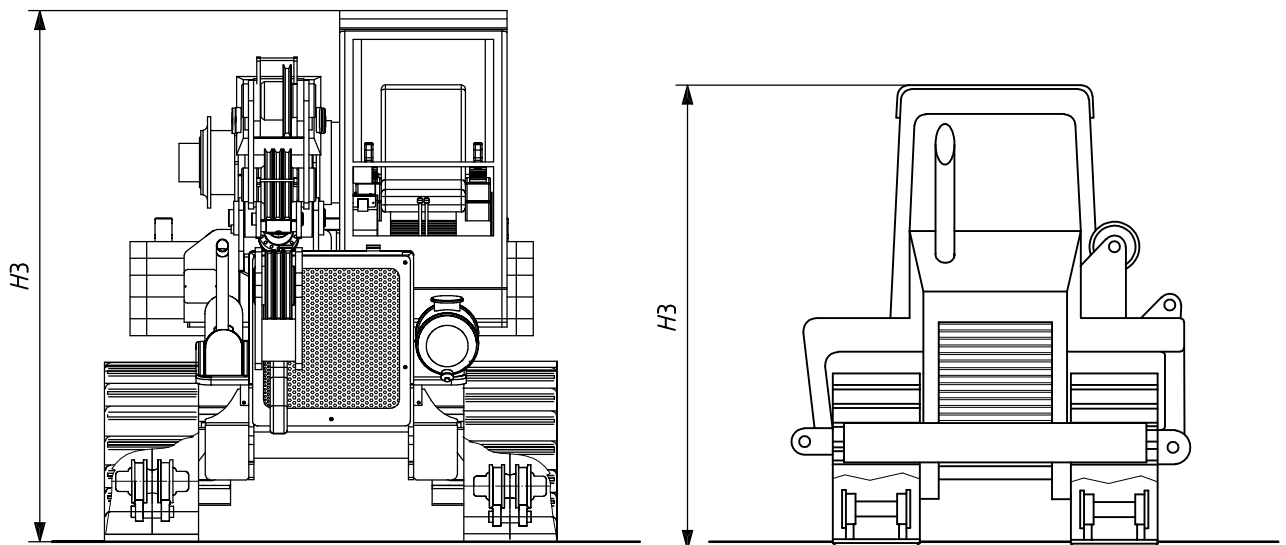


Figure 8 — Dimension $H3$ for crawler machine

3.3.9
shipping height

H3
(wheeled machine) height from the ground reference plane (GRP) to the highest point on the machine without the boom counterweight, exhaust pipe, air cleaner inlet pipe, or other easily removable components

See Figure 9.

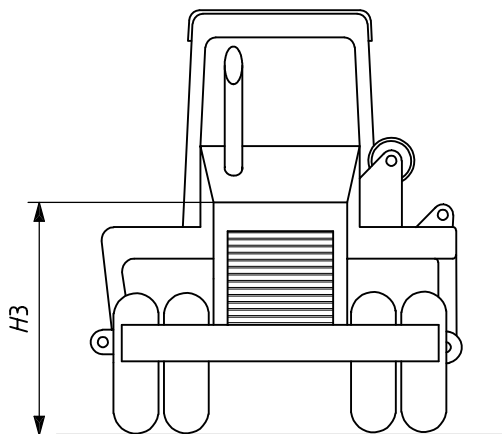


Figure 9 — Dimension *H3* for wheeled machine

3.3.10
grouser height

H5
distance between the face of the track shoe and the tip of the grouser

See Figure 10.

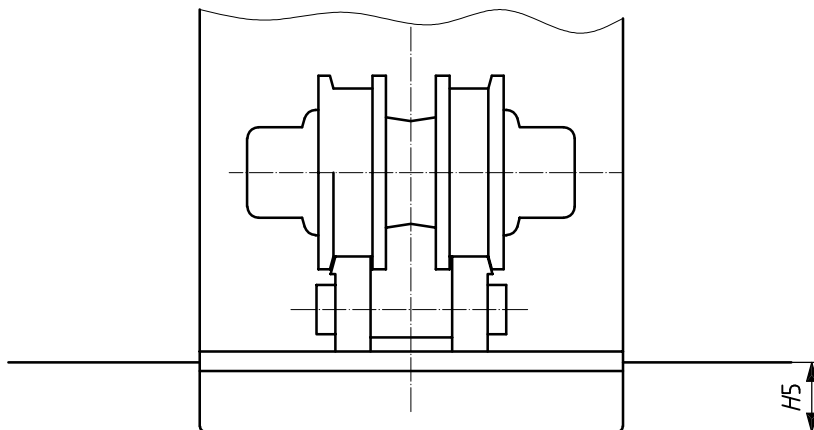


Figure 10 — Dimension *H5*

3.3.11
height to top of retracted counterweight

HH3
height between the ground reference plane (GRP) and the highest point on the counterweights when the adjustable counterweights are in the retracted position

See Figure 11.

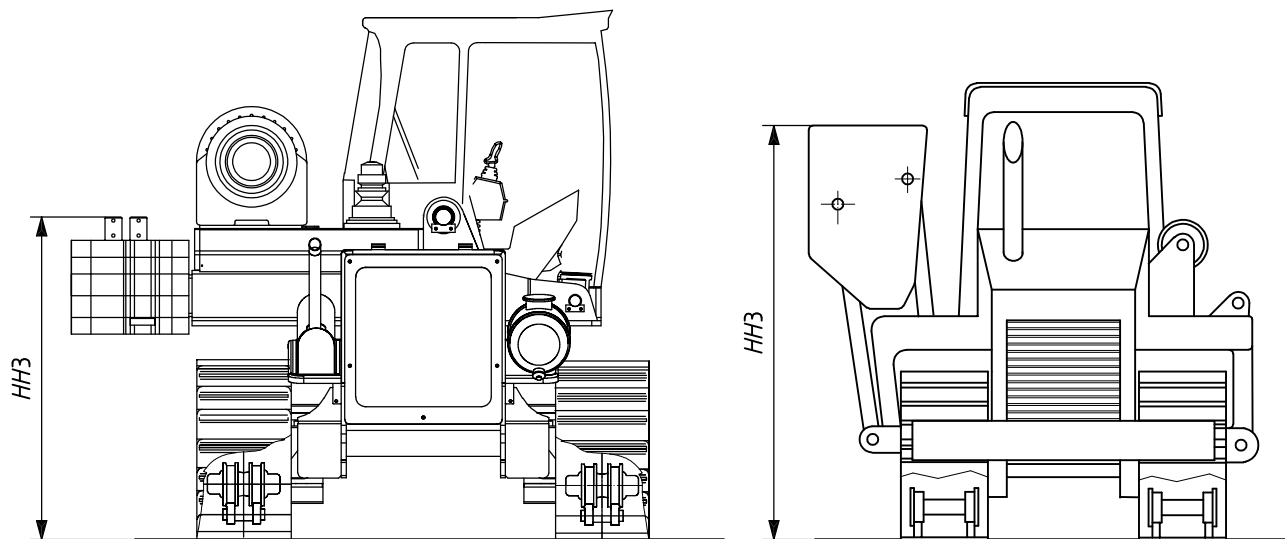


Figure 11 — Dimension *HH3*

3.3.12

clearance under the extended counterweights

HH4

height between the ground reference plane (GRP) and the lowest point on the counterweights when the adjustable counterweights are in the extended position

See Figure 12.

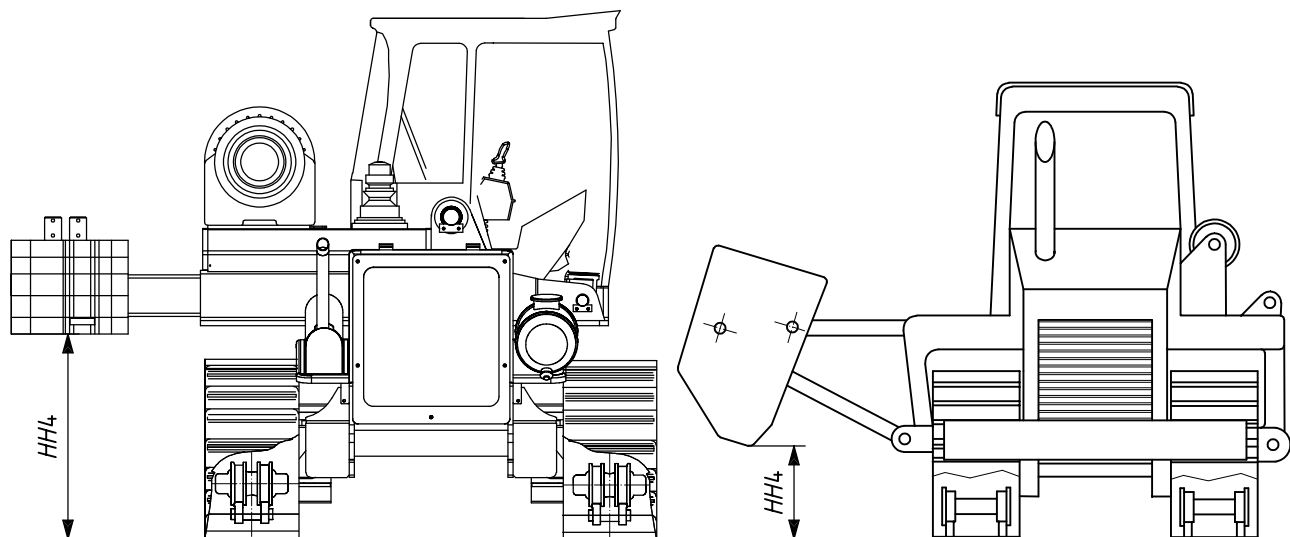


Figure 12 — Dimension *HH4*

3.3.13
maximum hook height

HH5

height between the ground reference plane (GRP) and the bottom of the hook opening at maximum hook height

See Figure 13.

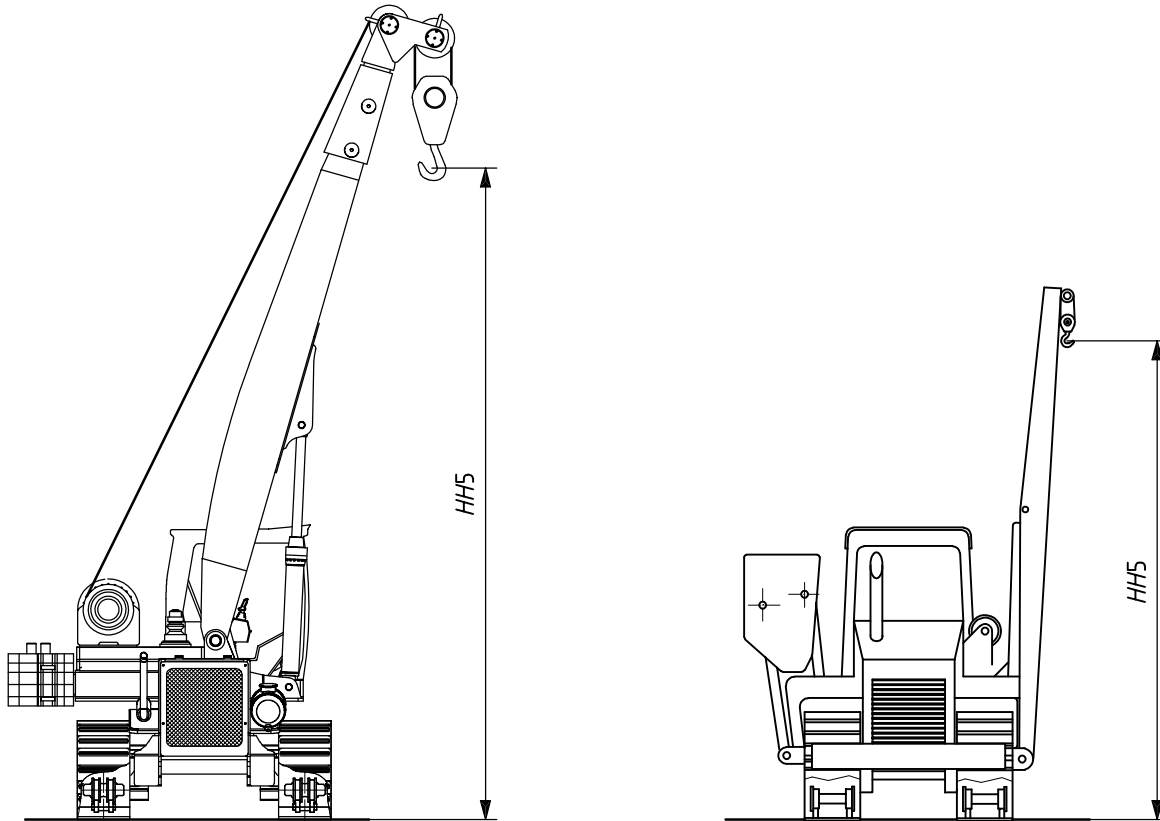
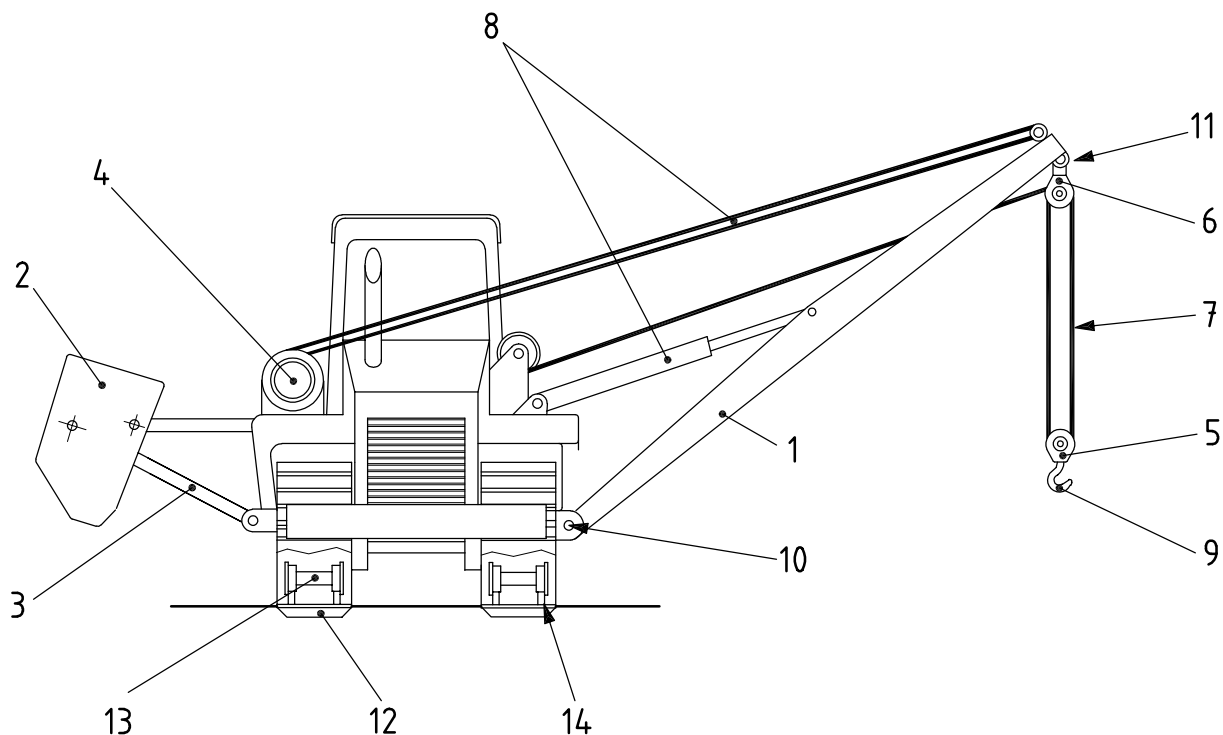


Figure 13 — Dimension *HH5*

4 Nomenclature

See Figure 14 for pipelayer component nomenclature.

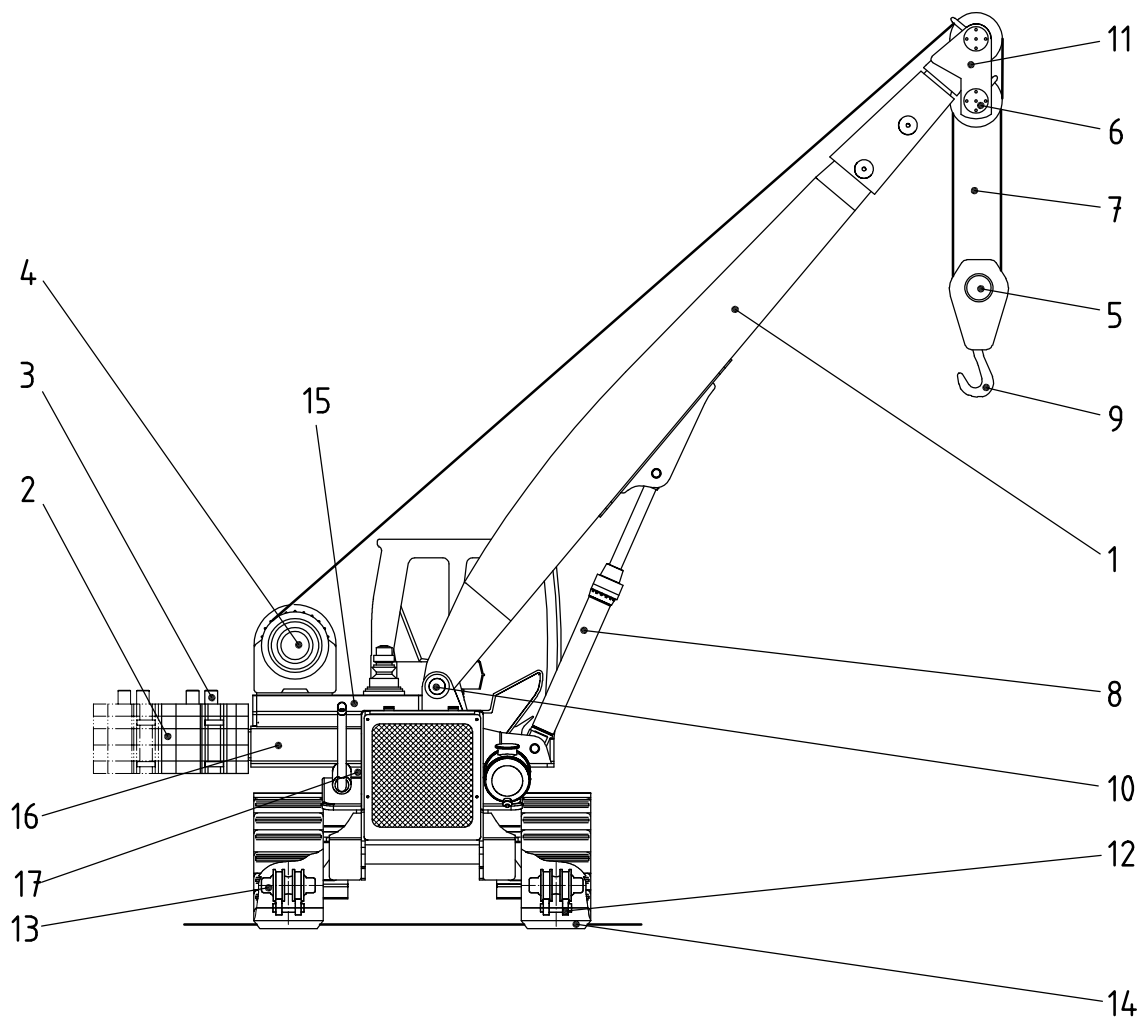


Key

- 1 boom
- 2 counterweight
- 3 counterweight support(s)
- 4 load hoist and, if applicable, boom hoist drums
- 5 load block, lower
- 6 load block, upper
- 7 load hoist, rope
- 8 boom hoist rope or boom cylinder
- 9 load hook
- 10 boom foot pivot
- 11 upper load block pivot
- 12 track shoe
- 13 lower track roller
- 14 track link rail outer edge

a) Pipelayer

Figure 14 — Pipelayer component nomenclature



Key

- | | |
|---|-------------------------------|
| 1 boom | 10 boom foot pivot |
| 2 counterweight | 11 upper load block pivot |
| 3 counterweight support(s) | 12 track shoe |
| 4 load hoist and, if applicable, boom hoist drums | 13 lower track roller |
| 5 load block, lower | 14 track link rail outer edge |
| 6 load block, upper | 15 rotating upper structure |
| 7 load hoist, rope | 16 revolving frame |
| 8 boom hoist rope or boom cylinder | 17 swing bearing |
| 9 load hook | |

b) Rotating pipelayer

Figure 14 (continued)

5 Commercial literature specifications (SI units)

5.1 Engine

Specify the following characteristics:

- a) manufacturer and model;
- b) ignition type, i.e. diesel or spark ignition;
- c) type of cycle, i.e. two- or four-stroke;
- d) form of air aspiration, i.e. naturally aspirated, mechanically supercharged or turbocharged;
- e) number of cylinders;
- f) bore;
- g) stroke;
- h) displacement;
- i) cooling system, i.e. air- or water-cooled;
- j) type of fuel;
- k) net power in accordance with ISO 9249;
- l) maximum torque at a given engine speed;
- m) starter type;
- n) electrical system voltage.

5.2 Transmission

Specify the type, for example:

- manual shift with flywheel clutch;
- power shift with torque converter;
- hydrostatic;
- electric;
- number of gear speeds, forward and reverse;
- maximum travel speed in accordance with ISO 6014.

5.3 Final drives (forward and reverse)

5.4 Steering and braking

5.4.1 Service brakes and steering

Specify the type and actuating system of the service brakes and steering, for example:

- type (drum, disc, oil, dry);
- actuating system type (mechanical, air, hydraulic, electrical, combination).

5.4.2 Parking brake

Specify the type.

5.4.3 Secondary brake

Specify the type.

5.5 Hydraulic system

5.5.1 Working pumps

Specify

- a) type,
- b) relief pressure, and
- c) pump flow at a given pressure, at rated engine speed.

5.5.2 Hydraulic motors

Specify the type and function.

5.6 System fluid capacities

Specify the following information:

- a) fuel tank;
- b) engine crankcase;
- c) cooling system;
- d) transmission;
- e) final drives;
- f) hydraulic systems;
- g) boom and hoist mechanisms;
- h) differential (if any).

5.7 Tyres

Specify the following information, as applicable:

- a) size and type;
- b) ply rating;
- c) rim size.

5.8 Undercarriage (track)

Specify the following information, as applicable:

- a) track gauge-dimension between centres of the two sets of track shoes;
- b) track shoe width W ;
- c) crawler base L-length of track flat on the GRP;
- d) ground contact area ($2 \times W \times L$);
- e) number of track shoes (each side);
- f) number of lower track rollers (each side).

5.9 Pipelayers mechanisms

Specify the following information as applicable:

- a) counterweights (masses);
- b) boom and hoist mechanisms (type and characteristics — pulley diameters, parts of line, hydraulic cylinder dimensions, etc.);
- c) clutches and brakes (type and dimensions);
- d) boom and load hoist drums (dimensions and rope length capacity);
- e) rope diameter and minimum breaking strength;
- f) boom length.

5.10 Load capacity chart

A chart of rated loads at designated load overhang distances (dimension $WW4$) shall be supplied.

5.11 Operating mass

Specify the operating mass in accordance with ISO 6016.

5.12 Shipping mass

Specify the shipping mass in accordance with ISO 6016.

British Standards Institution (BSI)

BSI is the national body responsible for preparing British Standards and other standards-related publications, information and services.

BSI is incorporated by Royal Charter. British Standards and other standardization products are published by BSI Standards Limited.

About us

We bring together business, industry, government, consumers, innovators and others to shape their combined experience and expertise into standards-based solutions.

The knowledge embodied in our standards has been carefully assembled in a dependable format and refined through our open consultation process. Organizations of all sizes and across all sectors choose standards to help them achieve their goals.

Information on standards

We can provide you with the knowledge that your organization needs to succeed. Find out more about British Standards by visiting our website at bsigroup.com/standards or contacting our Customer Services team or Knowledge Centre.

Buying standards

You can buy and download PDF versions of BSI publications, including British and adopted European and international standards, through our website at bsigroup.com/shop, where hard copies can also be purchased.

If you need international and foreign standards from other Standards Development Organizations, hard copies can be ordered from our Customer Services team.

Copyright in BSI publications

All the content in BSI publications, including British Standards, is the property of and copyrighted by BSI or some person or entity that owns copyright in the information used (such as the international standardization bodies) and has formally licensed such information to BSI for commercial publication and use.

Save for the provisions below, you may not transfer, share or disseminate any portion of the standard to any other person. You may not adapt, distribute, commercially exploit, or publicly display the standard or any portion thereof in any manner whatsoever without BSI's prior written consent.

Storing and using standards

Standards purchased in soft copy format:

- A British Standard purchased in soft copy format is licensed to a sole named user for personal or internal company use only.
- The standard may be stored on more than 1 device provided that it is accessible by the sole named user only and that only 1 copy is accessed at any one time.
- A single paper copy may be printed for personal or internal company use only.

Standards purchased in hard copy format:

- A British Standard purchased in hard copy format is for personal or internal company use only.
- It may not be further reproduced – in any format – to create an additional copy. This includes scanning of the document.

If you need more than 1 copy of the document, or if you wish to share the document on an internal network, you can save money by choosing a subscription product (see 'Subscriptions').

Reproducing extracts

For permission to reproduce content from BSI publications contact the BSI Copyright & Licensing team.

Subscriptions

Our range of subscription services are designed to make using standards easier for you. For further information on our subscription products go to bsigroup.com/subscriptions.

With **British Standards Online (BSOL)** you'll have instant access to over 55,000 British and adopted European and international standards from your desktop. It's available 24/7 and is refreshed daily so you'll always be up to date.

You can keep in touch with standards developments and receive substantial discounts on the purchase price of standards, both in single copy and subscription format, by becoming a **BSI Subscribing Member**.

PLUS is an updating service exclusive to BSI Subscribing Members. You will automatically receive the latest hard copy of your standards when they're revised or replaced.

To find out more about becoming a BSI Subscribing Member and the benefits of membership, please visit bsigroup.com/shop.

With a **Multi-User Network Licence (MUNL)** you are able to host standards publications on your intranet. Licences can cover as few or as many users as you wish. With updates supplied as soon as they're available, you can be sure your documentation is current. For further information, email subscriptions@bsigroup.com.

Revisions

Our British Standards and other publications are updated by amendment or revision.

We continually improve the quality of our products and services to benefit your business. If you find an inaccuracy or ambiguity within a British Standard or other BSI publication please inform the Knowledge Centre.

Useful Contacts

Customer Services

Tel: +44 345 086 9001

Email (orders): orders@bsigroup.com

Email (enquiries): cservices@bsigroup.com

Subscriptions

Tel: +44 345 086 9001

Email: subscriptions@bsigroup.com

Knowledge Centre

Tel: +44 20 8996 7004

Email: knowledgecentre@bsigroup.com

Copyright & Licensing

Tel: +44 20 8996 7070

Email: copyright@bsigroup.com

BSI Group Headquarters

389 Chiswick High Road London W4 4AL UK