

BS ISO 6804:2016



BSI Standards Publication

Rubber and plastics inlet hoses and hose assemblies for washing-machines and dishwashers — Specification

National foreword

This British Standard is the UK implementation of ISO 6804:2016.

The UK participation in its preparation was entrusted to Technical Committee PRI/66, Rubber and plastics tubing, hoses and hose assemblies.

A list of organizations represented on this committee can be obtained on request to its secretary.

This publication does not purport to include all the necessary provisions of a contract. Users are responsible for its correct application.

© The British Standards Institution 2016.

Published by BSI Standards Limited 2016

ISBN 978 0 580 89073 4

ICS 83.140.40; 97.040.40; 97.060

Compliance with a British Standard cannot confer immunity from legal obligations.

This British Standard was published under the authority of the Standards Policy and Strategy Committee on 30 November 2016.

Amendments/corrigenda issued since publication

Date	Text affected
------	---------------

**Rubber and plastics inlet hoses
and hose assemblies for washing-
machines and dishwashers —
Specification**

*Tuyaux et flexibles en caoutchouc et en plastique pour l'alimentation
des machines à laver et lave-vaisselle — Spécifications*



COPYRIGHT PROTECTED DOCUMENT

© ISO 2016, Published in Switzerland

All rights reserved. Unless otherwise specified, no part of this publication may be reproduced or utilized otherwise in any form or by any means, electronic or mechanical, including photocopying, or posting on the internet or an intranet, without prior written permission. Permission can be requested from either ISO at the address below or ISO's member body in the country of the requester.

ISO copyright office
Ch. de Blandonnet 8 • CP 401
CH-1214 Vernier, Geneva, Switzerland
Tel. +41 22 749 01 11
Fax +41 22 749 09 47
copyright@iso.org
www.iso.org

Contents

Page

Foreword	iv
1 Scope	1
2 Normative references	1
3 Terms and definitions	1
4 Classification	2
5 Couplings and fittings	2
6 Materials and construction	2
7 Dimensions and tolerances	2
7.1 Inside diameters, tolerances and minimum wall thickness.....	2
7.1.1 Type 1 and type 2 hoses.....	2
7.1.2 Type 3 hoses.....	3
7.2 Concentricity.....	3
7.3 Tolerances on length.....	3
8 Performance requirements for finished hoses and hose assemblies	3
8.1 Hydrostatic-pressure requirements (proof pressure test).....	3
8.2 Burst test.....	3
8.3 Bending test.....	3
8.4 Flexing tests.....	4
8.4.1 General.....	4
8.4.2 Sub-ambient temperature flexing test.....	4
8.4.3 Standard laboratory temperature flexing test.....	4
8.5 Resistance to kinking.....	5
8.6 Resistance to hydrostatic pressure after ageing.....	5
8.7 Resistance to ozone or weathering.....	6
8.7.1 Resistance to ozone (type 1 and type 2 hoses).....	6
8.7.2 Resistance to weathering (type 3 hoses).....	6
8.8 Resistance to hydraulic-pressure impulse test.....	6
8.9 Adhesion.....	7
8.10 Mechanical resistance of thermoplastics coupling nuts.....	7
9 Frequency of testing	9
10 Test certificate	9
11 Marking	9
12 Recommendations for packaging and storage	9
Annex A (normative) Type tests and routine tests	10
Annex B (informative) Recommended tests for production acceptance testing	11
Annex C (informative) Delivery certificate and test certificate	12
Bibliography	13

Foreword

ISO (the International Organization for Standardization) is a worldwide federation of national standards bodies (ISO member bodies). The work of preparing International Standards is normally carried out through ISO technical committees. Each member body interested in a subject for which a technical committee has been established has the right to be represented on that committee. International organizations, governmental and non-governmental, in liaison with ISO, also take part in the work. ISO collaborates closely with the International Electrotechnical Commission (IEC) on all matters of electrotechnical standardization.

The procedures used to develop this document and those intended for its further maintenance are described in the ISO/IEC Directives, Part 1. In particular the different approval criteria needed for the different types of ISO documents should be noted. This document was drafted in accordance with the editorial rules of the ISO/IEC Directives, Part 2 (see www.iso.org/directives).

Attention is drawn to the possibility that some of the elements of this document may be the subject of patent rights. ISO shall not be held responsible for identifying any or all such patent rights. Details of any patent rights identified during the development of the document will be in the Introduction and/or on the ISO list of patent declarations received (see www.iso.org/patents).

Any trade name used in this document is information given for the convenience of users and does not constitute an endorsement.

For an explanation on the meaning of ISO specific terms and expressions related to conformity assessment, as well as information about ISO's adherence to the World Trade Organization (WTO) principles in the Technical Barriers to Trade (TBT) see the following URL: www.iso.org/iso/foreword.html.

The committee responsible for this document is ISO/TC 45, *Rubber and rubber products*, Subcommittee SC 1, *Rubber and plastics hoses and hose assemblies*.

This fourth edition cancels and replaces the third edition (ISO 6804:2009), which has been technically revised with the following main changes:

- [Clause 2](#) has been updated: ISO 1746 has been deleted and replaced by ISO 10619-1;
- [Clause 8](#) has been extended to cover hydrostatic proof pressure tests and burst testing. A new table ([Table 2](#)) has been added to specify maximum working pressures, proof pressures and minimum burst pressures for each type. All subclauses have been renumbered;
- [8.5](#) (old 8.3) and [8.6](#) (old 8.4) have been extended with one line specifying the specific test pressures for the different hose types after kinking and ageing tests;
- [Clause 11](#) a), b), c), e) and example have been amended;
- [Annex A](#) and [Annex B](#) have been amended to include hydrostatic pressure proof test and burst testing. The term “hose assembly” has been added to the description of routine tests. [Table B.1](#) (column production acceptance test) has been filled in to specify which tests are recommended per batch (the previous edition specified N.A. to all the tests);
- [Table C.2](#) has been extended to show hydrostatic proof pressure test and burst test results.

Rubber and plastics inlet hoses and hose assemblies for washing-machines and dishwashers — Specification

1 Scope

This document specifies the requirements for three types of rubber or plastics inlet hoses and hose assemblies for washing-machines and dishwashers connected to the domestic water supply at a pressure not exceeding 1 MPa (10 bar).

It is applicable to the following types of hose:

- type 1: rubber hoses for unheated water supply (maximum temperature 70 °C);
- type 2: rubber hoses for heated water supply (maximum temperature 90 °C);
- type 3: plastics hoses for unheated water supply (maximum temperature 60 °C).

There may be national requirements for hose fittings and hoses conveying drinking water which must be complied with.

2 Normative references

The following documents are referred to in the text in such a way that some or all of their content constitutes requirements of this document. For dated references, only the edition cited applies. For undated references, the latest edition of the referenced document (including any amendments) applies.

ISO 188, *Rubber, vulcanized or thermoplastic — Accelerated ageing and heat resistance tests*

ISO 1307, *Rubber and plastics hoses — Hose sizes, minimum and maximum inside diameters, and tolerances on cut-to-length hoses*

ISO 1402, *Rubber and plastics hoses and hose assemblies — Hydrostatic testing*

ISO 4671, *Rubber and plastics hoses and hose assemblies — Methods of measurement of the dimensions of hoses and the lengths of hose assemblies*

ISO 4892 (all parts), *Plastics — Methods of exposure to laboratory light sources*

ISO 7326:2006, *Rubber and plastics hoses — Assessment of ozone resistance under static conditions*

ISO 8033, *Rubber and plastics hoses — Determination of adhesion between components*

ISO 8331, *Rubber and plastics hoses and hose assemblies — Guidelines for selection, storage, use and maintenance*

ISO 10619-1:2011, *Rubber and plastics hoses and tubing — Measurement of flexibility and stiffness — Part 1: Bending tests at ambient temperature*

ISO 23529, *Rubber — General procedures for preparing and conditioning test pieces for physical test methods*

3 Terms and definitions

For the purposes of this document, the terms and definitions given in ISO 8330 apply.

ISO and IEC maintain terminological databases for use in standardization at the following addresses:

- IEC Electropedia: available at <http://www.electropedia.org/>
- ISO Online browsing platform: available at <http://www.iso.org/obp>

4 Classification

Hoses are designated as one of the following three types, depending on the hose material and the temperature of the water supply.

- Type 1:** Rubber hoses for a medium-temperature water supply (up to 70 °C) — for a maximum working pressure of 1 MPa (10 bar).
- Type 2:** Rubber hoses for a high-temperature water supply (up to 90 °C) — for a maximum working pressure of 1 MPa (10 bar).
- Type 3:** Plastics hoses for low temperature (up to 60 °C) water supply — for a maximum working pressure of 0,8 MPa (8 bar).

5 Couplings and fittings

Hoses may be fitted with the appropriate type of coupling and end fitting to form hose assemblies.

NOTE Guidance on coupling types is given in ISO/TR 17784.

6 Materials and construction

The hose construction shall be as follows.

- a) The hose lining shall consist of rubber for type 1 and type 2 or thermoplastics material for type 3.
- b) The hose reinforcement shall consist of natural or synthetic textile material applied by any suitable technique.
- c) The hose cover shall consist of an ozone-resistant rubber for type 1 and type 2 or a weather-resistant thermoplastics material for type 3 (or, alternatively, a stainless-steel braid may be used instead of a cover).

The lining and the cover shall be of uniform thickness, concentric, fully gelled and free from visible cracks, porosity, foreign inclusions and other defects which could cause the hose to be unserviceable.

7 Dimensions and tolerances

7.1 Inside diameters, tolerances and minimum wall thickness

7.1.1 Type 1 and type 2 hoses

The preferred values for the bore of the hose are 10 mm and 12,5 mm.

The tolerances on the bore will depend on the characteristics of the end fittings; consequently, they shall be agreed between the manufacturer of the hose and the constructor of the hose assembly, but shall not exceed the maximum tolerances specified in ISO 1307.

7.1.2 Type 3 hoses

When measured in accordance with ISO 4671, the inside diameter and minimum wall thickness of the hose shall meet the requirements specified in [Table 1](#).

Table 1 — Nominal bores, inside diameters, tolerances on inside diameter and minimum wall thicknesses of plastics hoses

Nominal bore	Inside diameter mm	Tolerances on inside diameter mm	Minimum wall thickness mm
10	10	±0,6	2,6
13	12,7	±0,6	2,6

7.2 Concentricity

When determined in accordance with ISO 4671, the concentricity, based on a total indicator reading between the inside diameter and the outside surface of the cover, shall not be greater than 0,3 mm.

7.3 Tolerances on length

The tolerances on cut lengths of hose shall be in accordance with ISO 1307.

8 Performance requirements for finished hoses and hose assemblies

8.1 Hydrostatic-pressure requirements (proof pressure test)

The proof pressure test shall be carried out on every length of finished hose and on hose assemblies. When tested in accordance with ISO 1402, the hose (and the hose assembly) shall meet the requirements of [Table 2](#). The maximum variation in length and outside diameter at maximum working pressure shall be ±5 % and the hose/hose assembly shall not burst or fail by showing signs of leakage, cracking, abrupt distortion indicating irregularities in material or manufacture, or other signs of failure.

Table 2 — Hydrostatic-pressure requirements

Hose type	Maximum working pressure		Proof pressure		Minimum burst pressure	
	MPa	bar	MPa	bar	MPa	bar
1	1	10	1,5	15	3	30
2	1	10	1,5	15	3	30
3	0,8	8	1,2	12	2,4	24

8.2 Burst test

When tested by the method specified in ISO 1402, hoses shall meet the requirements of [Table 2](#).

8.3 Bending test

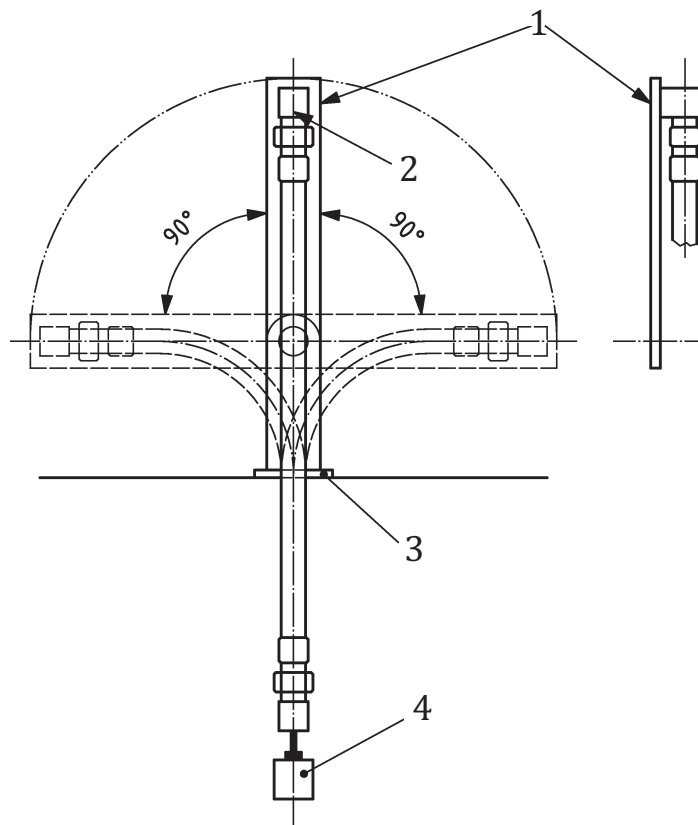
The bending test shall be carried out at a standard temperature as specified in ISO 23529.

When tested in accordance with ISO 10619-1:2011, method A, using a bending radius of 7,5 times the outside diameter, the hoses shall show no evidence, under visual examination, of kinking, breaking or peeling. The value of the coefficient of deformation (T/D) shall not be lower than 0,8.

8.4 Flexing tests

8.4.1 General

In the case of type 3 hoses, flexing tests shall be carried out using the test arrangement shown in [Figure 1](#).



Key

- 1 oscillating arm
- 2 flexing of coupling
- 3 support
- 4 2 kg weight

Figure 1 — Arrangement for flexing tests

8.4.2 Sub-ambient temperature flexing test

When the hose is tested during and after conditioning for 5 h at $(-5 \pm 3) ^\circ\text{C}$, the oscillating arm is moved right and left alternately through an angle of 90° at a rate of (50 ± 10) flexings per minute for 500 flexings. The hose shall show no evidence of cracking or other defects.

8.4.3 Standard laboratory temperature flexing test

When tested at a standard laboratory temperature as specified in ISO 23529, moving the oscillating arm through an angle of 180° at a rate of (20 ± 5) flexings per minute for 100 000 flexings, the hose shall show no evidence of cracking or other defects.

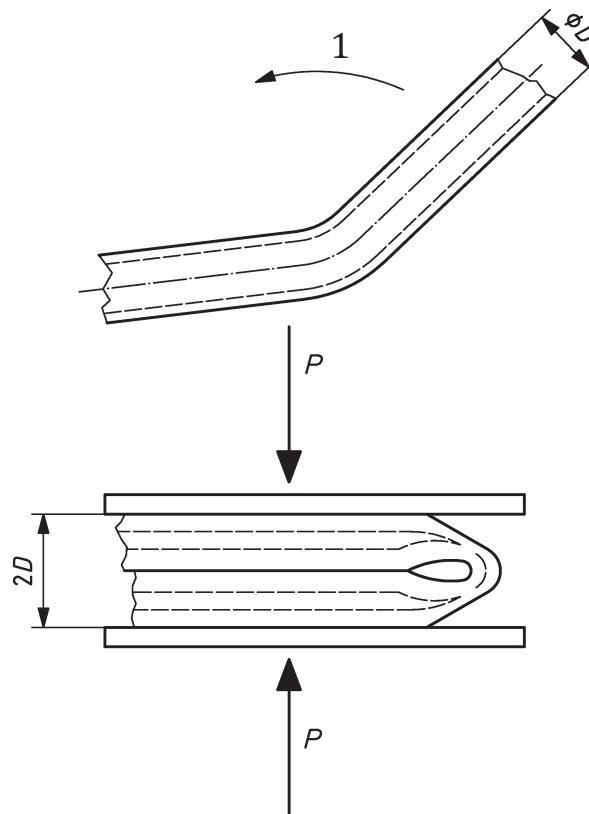
8.5 Resistance to kinking

The kinking test shall be carried out at a standard temperature as specified in ISO 23529.

The hose assembly is folded through an angle of 180° and then compressed in such a way that the total thickness is equal to twice the outer diameter of the hose, as shown in [Figure 2](#).

The pressure is maintained for 5 s, after which the hose assembly is allowed to rest for 1 min.

The test is carried out 10 times at the same point, the fold being made in the same direction each time.



Key

1 direction of fold

Figure 2 — Kinking test

After the test, the hose assembly shall be filled with water at the specified temperature and then tested at a pressure of 2,1 MPa (21 bar) for type 1 and type 2, and 1,7 MPa (17 bar) for type 3 by the method specified in ISO 1402 for 1 min. The hose shall show no evidence of leakage or other defects.

8.6 Resistance to hydrostatic pressure after ageing

The hose assembly, filled with water, shall be aged for 7 d (168 h) in an oven, in accordance with ISO 188, at

- (60 ± 2) °C for type 3 hoses,
- (70 ± 2) °C for type 1 hoses,
- (90 ± 2) °C for type 2 hoses.

After ageing, the hose assembly shall be emptied, refilled with water at the specified temperature and again tested at a pressure of 2,1 MPa (31,5 bar) for type 1 and type 2, and 1,7 MPa (17 bar) for type 3 by the method specified in ISO 1402 for 1 min.

During the pressure test, the hose assembly shall not burst or show defects such as leakage or blisters, nor shall there be evidence of coupling slippage.

8.7 Resistance to ozone or weathering

8.7.1 Resistance to ozone (type 1 and type 2 hoses)

The resistance to ozone test shall be carried out in accordance with ISO 7326:2006, method 1.

The hose test piece shall be tested in an atmosphere having an ozone concentration of (50 ± 5) pphm at (40 ± 2) °C for 72 h.

After testing, when viewed under a magnification of $\times 2$, the cover shall show no evidence of cracking.

8.7.2 Resistance to weathering (type 3 hoses)

The weathering test shall be carried out in accordance with the appropriate part of ISO 4892.

The light sources and exposure conditions shall be selected by agreement between the interested parties. Unless otherwise specified, the light sources and exposure conditions indicated in [Table 3](#) are recommended.

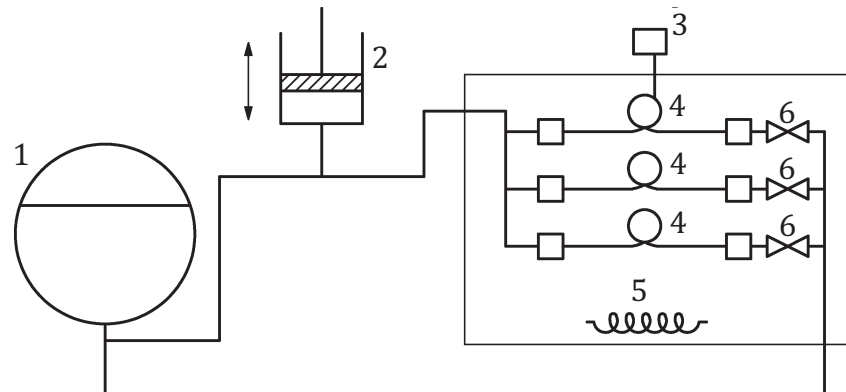
After testing, the cover shall show no evidence of cracks or other defects which could cause the hose to be unserviceable.

Table 3 — Light sources and exposure conditions for weathering

Light source	Cycle no.	Black-standard temperature °C	Chamber temperature °C	Relative humidity %	Exposure time h
Xenon-arc lamp	1	65 ± 3	38 ± 3	50 ± 10	400
Fluorescent UV lamp	1	60	—	Not controlled	350
Carbon-arc lamp with type 3 filter	4	63 ± 3	40 ± 3	50 ± 5	200

8.8 Resistance to hydraulic-pressure impulse test

The hose assembly is connected to a system in which water is circulated and subjected to pressure pulses, as shown in [Figure 3](#).



Key

- 1 pressure reservoir
- 2 pulse generator
- 3 thermostat
- 4 hose assemblies mounted in looped configuration
- 5 heating element
- 6 safety valves

Figure 3 — Equipment for testing resistance to impulses

The hose assembly is filled with water at a temperature of

- $(60 \pm 2) ^\circ\text{C}$ for type 3 hoses,
- $(70 \pm 2) ^\circ\text{C}$ for type 1 hoses,
- $(90 \pm 2) ^\circ\text{C}$ for type 2 hoses.

The hose assembly is then subjected to 25 000 sinusoidal pulses with a lower pressure of 1 MPa (10 bar) and an upper pressure of 2 MPa (20 bar), the thermostat being adjusted so that the temperature in the cabinet is maintained within the limits specified for the water inside the hose assembly. The hose assembly is mounted in a looped configuration with a loop diameter of about 300 mm. The pulse frequency shall be 0,5 Hz to 0,6 Hz. An example of a pulse curve is shown in [Figure 4](#).

During the test, the hose assembly shall not burst or show defects such as leakage or blisters, nor shall there be evidence of coupling slippage.

8.9 Adhesion

When determined in accordance with ISO 8033, the adhesion between the lining and reinforcement and the cover and reinforcement shall not be less than 1,5 kN/m.

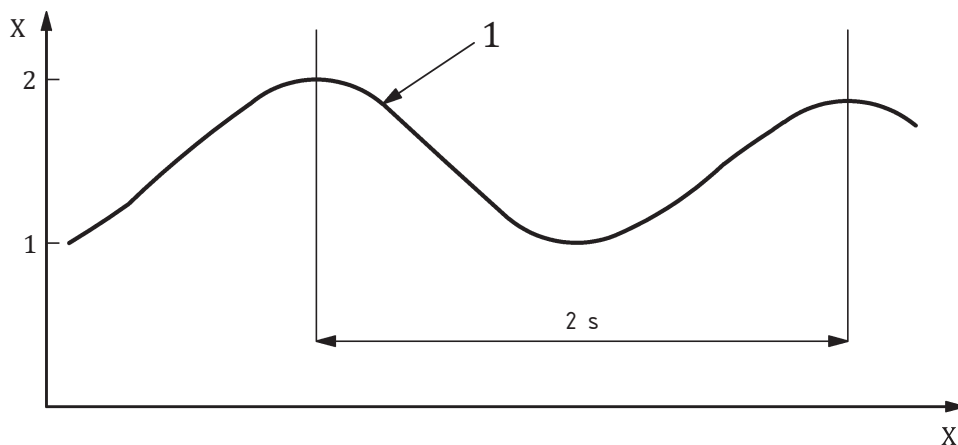
8.10 Mechanical resistance of thermoplastics coupling nuts

If thermoplastics couplings are fitted to the hose to form the hose assembly, the thermoplastics coupling nuts shall have adequate mechanical strength.

Compliance is checked by the following test, which shall be carried out at a standard temperature as specified in ISO 23529.

Before starting the test, the coupling nuts are conditioned for 3 d (72 h) at a standard temperature and relative humidity specified in ISO 23529.

A nut is then screwed on to a hardened-steel mandrel as shown in [Figure 5](#), the maximum torque applied being 15 N·m.



Key
 X time, in s
 Y pressure, in MPa
 1 pulse curve

Figure 4 — Pressure pulse diagram

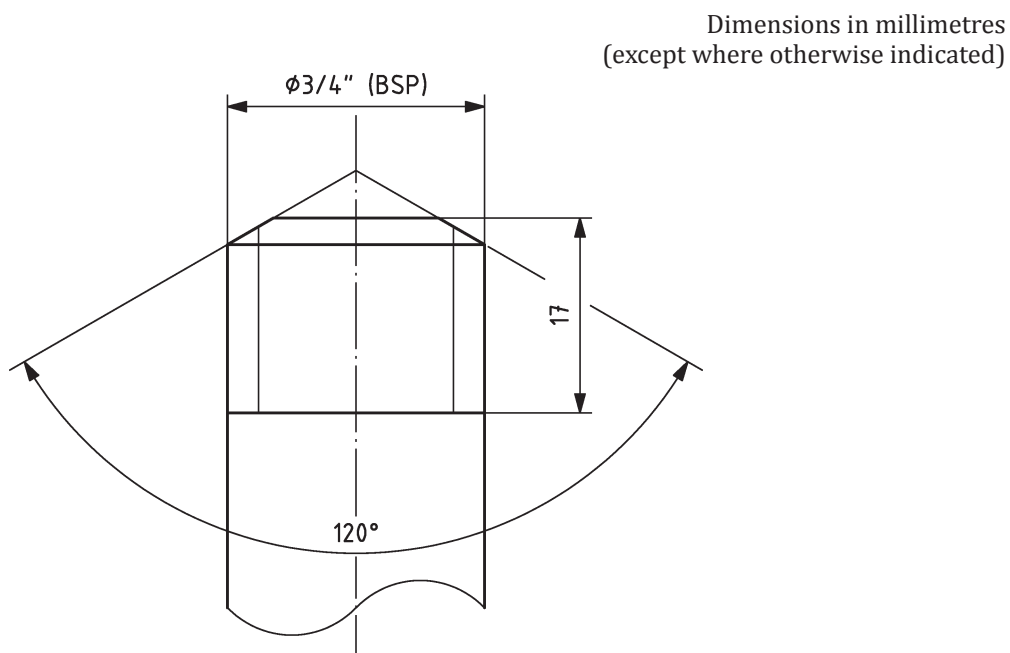


Figure 5 — Mandrel for coupling-nut test

During the test, the nut shall not break.

After removal of the nut, it shall show no cracks visible to the naked eye and shall be fit for further use.

If fittings made of other materials are used, the test requirements shall be agreed between the purchaser and the supplier.

9 Frequency of testing

Type testing and routine testing shall be as specified in [Annex A](#).

Type tests are those tests required to confirm that a particular hose or hose assembly design, manufactured by a particular method from particular materials, meets all the requirements of this document. The tests shall be repeated at a maximum of five-year intervals, or whenever a change in design, the method of the manufacture or materials used occurs.

Routine tests are those tests required to be carried out on each length of finished hose or hose assembly prior to dispatch.

Production acceptance tests are those tests, specified in [Annex B](#), which should preferably be carried out on each batch to control the quality of manufacture. The tests specified in [Annex B](#) are given as a guide only.

10 Test certificate

A test certificate, if requested by the customer, shall be supplied by the manufacturer. The recommended contents of such a certificate are given in [Annex C](#).

11 Marking

11.1 The hose shall be continuously and durably marked with the following minimum information:

- a) the manufacturer's name or trademark, e.g. XXXX;
- b) the number and year of publication of this document, i.e. ISO 6804:2016;
- c) the hose type, e.g. type 2, and maximum working pressure in MPa and bar with units stated;
- d) the inside diameter, in millimetres, e.g. 10 mm;
- e) the quarter and the last two digits of the year of manufacture, e.g. 3Q16.

EXAMPLE XXXX/ISO 6804:2016/type 2/1 MPa/10 bar/10 mm/3Q16.

11.2 When supplied as hose assemblies, at least one fitting shall be marked with the hose assembly constructor's name or mark.

12 Recommendations for packaging and storage

These are given in ISO 8331.

Annex A (normative)

Type tests and routine tests

[Table A.1](#) gives the type tests and routine tests which are required to be carried out.

Type tests are those carried out to determine that the hose design, materials and method of manufacture meet all the requirements of this document.

Routine tests are those carried out on every manufactured length of hose or hose assembly.

Table A.1 — Required type tests and routine tests

Dimension/property under test (with reference to the relevant subclause)	Type test	Routine test
Inside diameter/minimum wall thickness (7.1)	X	X
Concentricity (7.2)	X	X
Tolerances on length (7.3)	X	X
Hydrostatic-pressure proof test (8.1)	X	X
Burst test (8.2)	X	N.A.
Bending test (8.3)	X	N.A.
Sub-ambient temperature flexing test (8.4.2)	X	N.A.
Standard laboratory temperature flexing test (8.4.3)	X	N.A.
Resistance to kinking (8.5)	X	N.A.
Resistance to hydrostatic pressure after ageing (8.6)	X	N.A.
Resistance to ozone (8.7.1)	X	N.A.
Resistance to weathering (8.7.2)	X	N.A.
Resistance to hydraulic-pressure impulse test (8.8)	X	N.A.
Adhesion (8.9)	X	N.A.
Mechanical resistance of thermoplastics coupling nuts (8.10)	X	N.A.
X Test required.		
N.A. Not applicable.		

Annex B (informative)

Recommended tests for production acceptance testing

[Table B.1](#) gives the recommended tests for production acceptance testing (see [Clause 9](#)) to be carried out on a hose or sample of hose from each batch manufactured. A manufactured batch is defined as, at the most, 30 000 m of identical hose or 10 000 kg of rubber or plastics lining or cover material.

Table B.1 — Recommended tests for production acceptance testing

Dimension/property under test (with reference to relevant subclause)	Production test acceptance
Inside diameter/minimum wall thickness (7.1)	N.A.
Concentricity (7.2)	N.A.
Tolerances on length (7.3)	N.A.
Hydrostatic proof pressure test (8.1)	N.A.
Burst test (8.2)	N.A.
Bending test (8.3)	X
Sub-ambient temperature flexing test (8.4.2)	X
Standard laboratory temperature flexing test (8.4.3)	X
Resistance to kinking (8.5)	X
Resistance to hydrostatic pressure after ageing (8.6)	X
Resistance to ozone (8.7.1)	X
Resistance to weathering (8.7.2)	X
Resistance to hydraulic-pressure impulse test (8.8)	X
Adhesion (8.9)	X
Mechanical resistance of thermoplastics coupling nuts (8.10)	X
X Test required.	
N.A. Not applicable.	

Annex C (informative)

Delivery certificate and test certificate

[Table C.1](#) and [Table C.2](#) give information which is recommended for inclusion in delivery and test certificates.

The delivery certificate is intended to be attached to the products being delivered and should contain the information in [Table C.1](#) as agreed between the purchaser and the supplier.

The test certificate is intended either to be attached to the products being delivered or to be supplied to the purchaser after delivery on request. It should contain the items given in [Table C.2](#).

Table C.1 — Information for inclusion in a delivery certificate

Information	Reference to relevant clause/subclause
1 Identification of the hoses and/or hose assemblies	
1.1 Hose type	Clause 4
1.2 Temperature rating	Clause 4
1.3 Max. working pressure	Clause 4
1.4 Hoses and coupling nuts (serial or batch numbers)	
2 Quantity of hose or hose assemblies supplied	
3 Inside diameter/wall thickness	7.1
4 Concentricity	7.2
5 Tolerances on length	7.3

Table C.2 — Information for inclusion in a test certificate

Test	Reference to relevant subclause
1 Hydrostatic proof pressure test	8.1
2 Burst test	8.2
3 Bending test	8.3
4 Sub-ambient temperature flexing test	8.4.2
5 Standard laboratory temperature flexing test	8.4.3
6 Resistance to kinking	8.5
7 Resistance to hydrostatic pressure after ageing	8.6
8 Resistance to ozone	8.7.1
9 Resistance to weathering	8.7.2
10 Resistance to hydraulic-pressure impulse test	8.8
11 Adhesion	8.9
12 Mechanical resistance of thermoplastics coupling nuts	8.10

Bibliography

- [1] ISO 8330, *Rubber and plastics hoses and hose assemblies — Vocabulary*
- [2] ISO/TR 17784, *Rubber and plastics hoses and hose assemblies — Guide for use by purchasers, assemblers, installers and operating personnel*
- [3] IEC 61770, *Electric appliances connected to the water mains — Avoidance of backsiphonage and failure of hose-sets*

British Standards Institution (BSI)

BSI is the national body responsible for preparing British Standards and other standards-related publications, information and services.

BSI is incorporated by Royal Charter. British Standards and other standardization products are published by BSI Standards Limited.

About us

We bring together business, industry, government, consumers, innovators and others to shape their combined experience and expertise into standards-based solutions.

The knowledge embodied in our standards has been carefully assembled in a dependable format and refined through our open consultation process. Organizations of all sizes and across all sectors choose standards to help them achieve their goals.

Information on standards

We can provide you with the knowledge that your organization needs to succeed. Find out more about British Standards by visiting our website at bsigroup.com/standards or contacting our Customer Services team or Knowledge Centre.

Buying standards

You can buy and download PDF versions of BSI publications, including British and adopted European and international standards, through our website at bsigroup.com/shop, where hard copies can also be purchased.

If you need international and foreign standards from other Standards Development Organizations, hard copies can be ordered from our Customer Services team.

Copyright in BSI publications

All the content in BSI publications, including British Standards, is the property of and copyrighted by BSI or some person or entity that owns copyright in the information used (such as the international standardization bodies) and has formally licensed such information to BSI for commercial publication and use.

Save for the provisions below, you may not transfer, share or disseminate any portion of the standard to any other person. You may not adapt, distribute, commercially exploit, or publicly display the standard or any portion thereof in any manner whatsoever without BSI's prior written consent.

Storing and using standards

Standards purchased in soft copy format:

- A British Standard purchased in soft copy format is licensed to a sole named user for personal or internal company use only.
- The standard may be stored on more than 1 device provided that it is accessible by the sole named user only and that only 1 copy is accessed at any one time.
- A single paper copy may be printed for personal or internal company use only.

Standards purchased in hard copy format:

- A British Standard purchased in hard copy format is for personal or internal company use only.
- It may not be further reproduced – in any format – to create an additional copy. This includes scanning of the document.

If you need more than 1 copy of the document, or if you wish to share the document on an internal network, you can save money by choosing a subscription product (see 'Subscriptions').

Reproducing extracts

For permission to reproduce content from BSI publications contact the BSI Copyright & Licensing team.

Subscriptions

Our range of subscription services are designed to make using standards easier for you. For further information on our subscription products go to bsigroup.com/subscriptions.

With **British Standards Online (BSOL)** you'll have instant access to over 55,000 British and adopted European and international standards from your desktop. It's available 24/7 and is refreshed daily so you'll always be up to date.

You can keep in touch with standards developments and receive substantial discounts on the purchase price of standards, both in single copy and subscription format, by becoming a **BSI Subscribing Member**.

PLUS is an updating service exclusive to BSI Subscribing Members. You will automatically receive the latest hard copy of your standards when they're revised or replaced.

To find out more about becoming a BSI Subscribing Member and the benefits of membership, please visit bsigroup.com/shop.

With a **Multi-User Network Licence (MUNL)** you are able to host standards publications on your intranet. Licences can cover as few or as many users as you wish. With updates supplied as soon as they're available, you can be sure your documentation is current. For further information, email subscriptions@bsigroup.com.

Revisions

Our British Standards and other publications are updated by amendment or revision.

We continually improve the quality of our products and services to benefit your business. If you find an inaccuracy or ambiguity within a British Standard or other BSI publication please inform the Knowledge Centre.

Useful Contacts

Customer Services

Tel: +44 345 086 9001

Email (orders): orders@bsigroup.com

Email (enquiries): cservices@bsigroup.com

Subscriptions

Tel: +44 345 086 9001

Email: subscriptions@bsigroup.com

Knowledge Centre

Tel: +44 20 8996 7004

Email: knowledgecentre@bsigroup.com

Copyright & Licensing

Tel: +44 20 8996 7070

Email: copyright@bsigroup.com

BSI Group Headquarters

389 Chiswick High Road London W4 4AL UK