

BS ISO 5775-1:2014



BSI Standards Publication

Bicycle tyres and rims

Part 1: Tyre designations and dimensions

bsi.

...making excellence a habit.™

National foreword

This British Standard is the UK implementation of ISO 5775-1:2014. It supersedes BS 6102-5:1998 which is withdrawn.

The UK participation in its preparation was entrusted to Technical Committee GME/25, Cycles.

A list of organizations represented on this committee can be obtained on request to its secretary.

This publication does not purport to include all the necessary provisions of a contract. Users are responsible for its correct application.

© The British Standards Institution 2014. Published by BSI Standards Limited 2014

ISBN 978 0 580 71499 3

ICS 43.150; 83.160.10

Compliance with a British Standard cannot confer immunity from legal obligations.

This British Standard was published under the authority of the Standards Policy and Strategy Committee on 30 September 2014.

Amendments issued since publication

Date	Text affected
------	---------------

INTERNATIONAL
STANDARD

BS ISO 5775-1:2014

ISO
5775-1

Sixth edition
2014-09-01

Bicycle tyres and rims —

Part 1:
Tyre designations and dimensions

Pneumatiques et jantes pour bicyclettes —

Partie 1: Désignation et cotes des pneumatiques



Reference number
ISO 5775-1:2014(E)

© ISO 2014



COPYRIGHT PROTECTED DOCUMENT

© ISO 2014

All rights reserved. Unless otherwise specified, no part of this publication may be reproduced or utilized otherwise in any form or by any means, electronic or mechanical, including photocopying, or posting on the internet or an intranet, without prior written permission. Permission can be requested from either ISO at the address below or ISO's member body in the country of the requester.

ISO copyright office
Case postale 56 • CH-1211 Geneva 20
Tel. + 41 22 749 01 11
Fax + 41 22 749 09 47
E-mail copyright@iso.org
Web www.iso.org

Published in Switzerland

Contents

Page

Foreword	iv
1 Scope	1
2 Normative references	1
3 Terms and definitions	1
4 “Wired edge” tyres mounted on straight side or crotchet type rims	2
4.1 Tyre designation	3
4.2 Tyre dimensions	3
4.3 Tread configurations	10
4.4 Tyre dimension measurement method	11
4.5 Recommended rim contours	11
4.6 Minimum inflation pressure	11
5 “Beaded edge” tyres mounted on hooked bead rims	12
5.1 Tyre designation	13
5.2 Tyre dimensions	13
5.3 Tyre dimension measurement method	15
5.4 Tyres than can be mounted on both hooked bead and straight side rims	15
Annex A (informative) Old marking	16

Foreword

ISO (the International Organization for Standardization) is a worldwide federation of national standards bodies (ISO member bodies). The work of preparing International Standards is normally carried out through ISO technical committees. Each member body interested in a subject for which a technical committee has been established has the right to be represented on that committee. International organizations, governmental and non-governmental, in liaison with ISO, also take part in the work. ISO collaborates closely with the International Electrotechnical Commission (IEC) on all matters of electrotechnical standardization.

The procedures used to develop this document and those intended for its further maintenance are described in the ISO/IEC Directives, Part 1. In particular the different approval criteria needed for the different types of ISO documents should be noted. This document was drafted in accordance with the editorial rules of the ISO/IEC Directives, Part 2 (see www.iso.org/directives).

Attention is drawn to the possibility that some of the elements of this document may be the subject of patent rights. ISO shall not be held responsible for identifying any or all such patent rights. Details of any patent rights identified during the development of the document will be in the Introduction and/or on the ISO list of patent declarations received (see www.iso.org/patents).

Any trade name used in this document is information given for the convenience of users and does not constitute an endorsement.

For an explanation on the meaning of ISO specific terms and expressions related to conformity assessment, as well as information about ISO's adherence to the WTO principles in the Technical Barriers to Trade (TBT) see the following URL: Foreword - Supplementary information

The committee responsible for this document is ISO/TC 31, *Tyres, rims, and valves*, Subcommittee SC 10, *Cycle, moped, motorcycle tyres, and rims*.

This sixth edition cancels and replaces the fifth edition (ISO 5775-1:1997), which has been technically revised.

ISO 5775 consists of the following parts, under the general title *Bicycle tyres and rims*:

- *Part 1: Tyre designations and dimensions*
- *Part 2: Rims*

Bicycle tyres and rims —

Part 1: Tyre designations and dimensions

1 Scope

This part of ISO 5775 specifies the designations and dimensions for the following pneumatic bicycle tyres:

- “wired edge” tyres mounted on straight side or crotchet type rims;
- “beaded edge” tyres mounted on hooked bead rims.

Tubular sew-up tyres and non-pneumatic tyres are not covered by this part of ISO 5775.

2 Normative references

The following documents, in whole or in part, are normatively referenced in this document and are indispensable for its application. For dated references, only the edition cited applies. For undated references, the latest edition of the referenced document (including any amendments) applies.

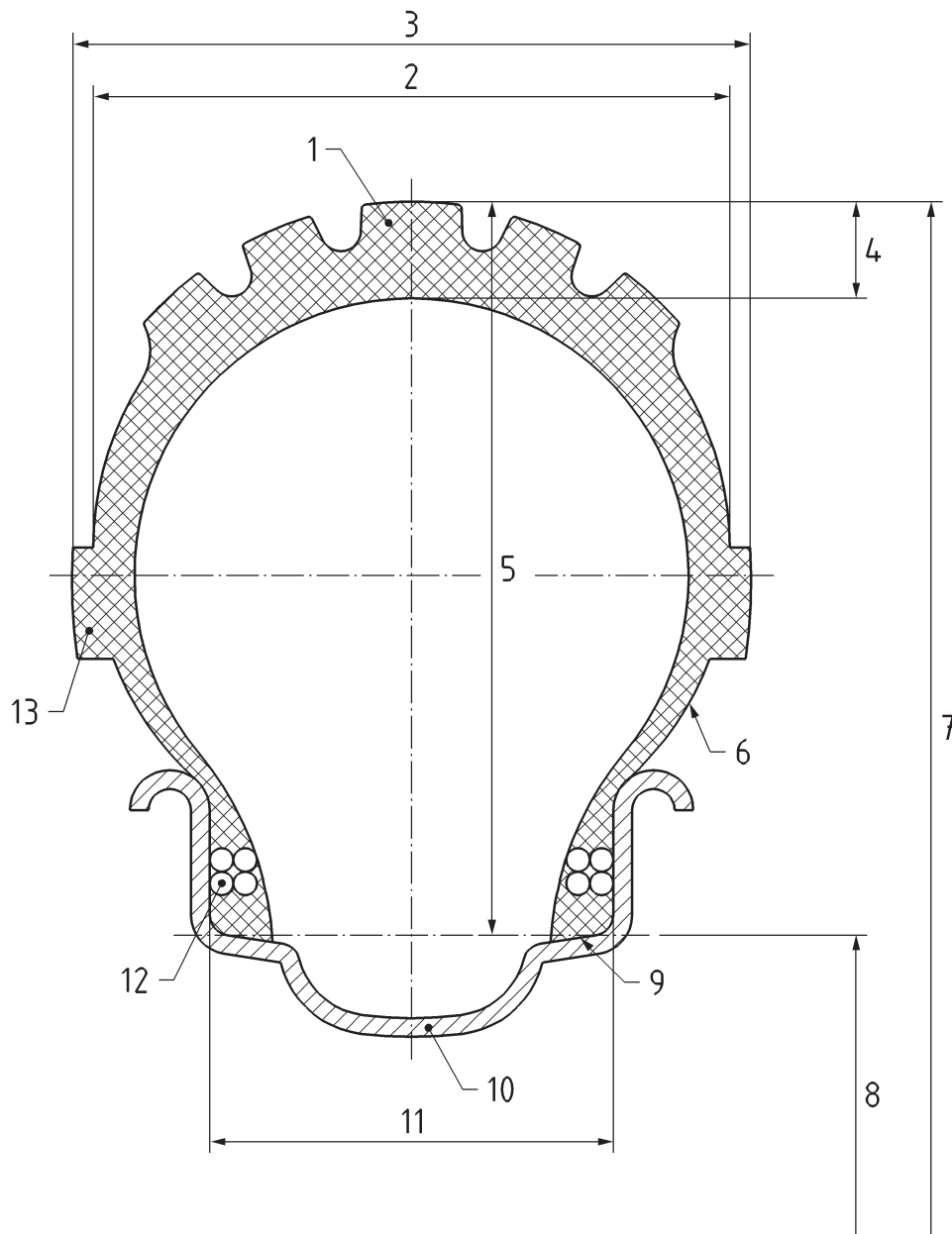
ISO 4223-1, *Definitions of some terms used in the tyre industry — Part 1: Pneumatic tyres*

ISO 5775-2, *Bicycle tyres and rims — Part 2: Rims*

3 Terms and definitions

For the purposes of this part of ISO 5775, the terms and definitions given in ISO 4223-1 apply.

4 “Wired edge” tyres mounted on straight side or crotchet type rims



Key

- | | |
|--------------------------------------|--|
| 1 tread | 8 specified rim diameter (D) |
| 2 section width (S) | 9 bead base |
| 3 maximum overall width (W) | 10 rim |
| 4 crown thickness | 11 measuring rim width (R_m) |
| 5 section height (H) | 12 steel bead wire |
| 6 side wall | 13 side wall engraving or decorative pattern |
| 7 maximum overall diameter (D_0) | |

Figure 1 — Typical section of a cycle tyre showing components and nomenclature

NOTE For tyres that could be mounted on both straight side and hooked bead rims, see 5.4.

4.1 Tyre designation

The tyre designation for straight side and crotchet type rims shall be shown on the sidewall of the tyre and shall include the marking given in [4.1.1](#) to [4.1.4](#).

4.1.1 Tyre size designation

The characteristics shall be indicated as follows:

Nominal section width	Tyre construction code	Nominal rim diameter
-----------------------	------------------------	----------------------

4.1.1.1 Nominal section width

The nominal section width of the tyre shall be expressed in millimetres.

4.1.1.2 Tyre construction code

The tyre construction code shall be a separated dash.

NOTE Other codes will be established for new concepts of tyres.

4.1.1.3 Nominal rim diameter

The nominal rim diameter shall be expressed in millimetres.

4.1.2 Old marking

To help customers in those countries where other systems of marking were used, the old marking(s) may be added in parentheses before or after the tyre size designation.

It is suggested that characters smaller than those used for the designation specified in [4.1.1](#) be adopted. See [Annex A](#) for correspondence between “tyre size designation” and “old markings”. Sizes not included in [Annex A](#) shall bear the tyre size designation only.

4.1.3 Other service characteristics

4.1.3.1 In the case of tubeless tyres, the marking “TUBELESS” shall be shown on the tyre.

4.1.3.2 In the case of a preferred direction of rotation of the tyre, an arrow shall be used to indicate that direction.

4.1.3.3 Specific indications, if required, may be added to indicate the following:

- a) the recommended or the maximum inflation pressure, in kilopascals;
- b) other characteristics.

4.1.4 Example

A tyre having nominal section width 32 mm, nominal rim diameter 597 mm, and recommended inflation pressure of 400 kPa shall be marked as follows:

32 – 597 inflate to 400 kPa

4.2 Tyre dimensions

See [Figure 1](#) for tread and tyre dimensions.

4.2.1 Calculation of “design tyre” dimensions

4.2.1.1 Theoretical rim width, R_{th}

The theoretical rim width, R_{th} , is equal to the product of the nominal section width, S_N , by the rim/section ratio, K_1 , as shown in Formula (1):

$$R_{th} = K_1 S_N \quad (1)$$

NOTE For tyres with $S_N \leq 30$, $K_1 = 0,65$. For tyres with $S_N > 30$, $K_1 = 0,55$.

4.2.1.2 Measuring rim width, R_m

The measuring rim width, R_m , is the width of the existing rim nearest to the theoretical rim width, R_{th} . See ISO 5775-2 for existing rim widths.

4.2.1.3 Design tyre section width, S

The design tyre section width, S , is the nominal section width, S_N , transferred from the theoretical rim width, R_{th} , to the measuring rim width, R_m , as shown in Formula (2):

$$S = S_n + K_2 (R_m - R_{th}) \quad (2)$$

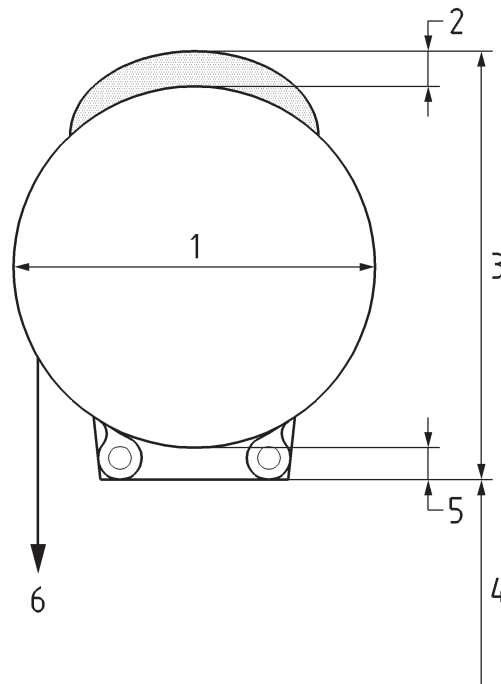
rounded to the nearest whole number.

NOTE For tyres existing concepts, $K_2 = 0,4$.

4.2.1.4 Design tyre section height, H

The design tyre section, H , is equal to the following:

- the nominal section width +4 mm when $S_N < 28$ mm;
- the nominal section width +5,5 mm when $S_N \geq 28$ mm;
- the nominal section width +6,5 mm for off-road (type D) ($S_N \geq 35$ mm).



Key

- 1 section width
- 2 additional tread thickness
- 3 section height = section width + shift + additional tread thickness
- 4 seat diameter
- 5 shift
- 6 round shape of the carcass

Figure 2 — Definition of the terms

4.2.1.5 Design tyre overall diameter, D_o

The design tyre overall diameter, D_o , is the sum of the nominal rim diameter, D_r , plus twice the design tyre section height, H , as shown in Formula (3):

$$D_o = D_r + 2H \quad (3)$$

Existing values of the nominal rim diameter, D_r , are given in ISO 5775-2.

4.2.2 Calculation of maximum tyre dimensions in service

The calculation is for use by vehicle manufacturers in designing for tyre clearance.

4.2.2.1 Maximum overall width in service, W_{max}

The maximum overall width in service, W_{max} , is equal to the design tyre section width, S , plus a value, as shown in [Table 1](#).

Table 1 — Maximum overall width in service

Dimensions in millimetres

Tyre type (see 4.3)	Nominal section width	Maximum overall width in service
	S_N	W_{\max}
A	≤ 25	$S + 1$
	$25 < S_N \leq 35$	$S + 2$
	> 35	$S + 3$
D	all S_N	$S + 8$

This includes protective ribs, lettering, embellishments, manufacturing tolerances, and growth due to service.

4.2.2.2 Maximum overall diameter in service, $D_{o,\max}$

The maximum overall diameter in service, $D_{o,\max}$, is equal to the nominal rim diameter, D_r , plus twice the design tyre section height, H , plus a value as follows:

- $D_{o,\max} = D_r + 2H + 6$ mm for type A tyres;
- $D_{o,\max} = D_r + 2H + 10$ mm for type D tyres.

This includes manufacturing tolerances and growth due to service.

4.2.2.3 Minimum overall width, S_{\min}

The minimum overall width, S_{\min} , is equal to the design tyre section width, S , plus a value, as shown in [Table 2](#).

Table 2 — Minimum overall width

Dimensions in millimetres

Nominal section width	Minimum overall width
S_N	S_{\min}
≤ 28	$S - 2$
> 28	$S - 3$

4.2.3 Values

[Table 3](#) shows the dimensions for measuring rim width, design section width, and design section height according to [4.2.1](#) for nominal section widths to be used.

Table 3 — “Wired edge” tyres mounted on crotchet type rims — Design tyre dimensions

Dimensions in millimetres

Nominal section width	Measuring rim width ^a	Design tyre	
		Section width	Section height
		S	H
16	13C	16	20
18	13C	18	22
20	13C	20	24

^a For dimensions of measuring rims, see ISO 5775-2.

Table 3 (continued)

Nominal section width S_N	Measuring rim width ^a R_m	Design tyre	
		Section width S	Section height H
23	15C	23	27
25	15C	25	29
28	17C	28	33,5
30	17C	30	35,5
32	17C	32	37,5
35	19C	35	40,5
37	19C	37	42,5
40	19C	40	45,5
42	19C	42	47,5
44	19C	44	49,5
47	19C	47	52,5
50	19C	50	55,5
52	19C	52	57,5
54	19C	54	59,5
57	19C	57	62,5
60	21C	60	65,5
62	21C	62	67,5

^a For dimensions of measuring rims, see ISO 5775-2.

Table 4 — “Wired edge” tyres mounted on straight side and crotchet type rims — Recommended rims

Dimensions in millimetres

Nominal section width S_N	Recommended rims ^a	
	Straight side rims ^b	Crotchet type rims ^c
16	—	13C
18	—	13C
20	—	13C
23	16	13C; 15C
25	16; 18	13C; 15C; 17C
28	16; 18; 20	15C; 17C; 19C
32	16; 18; 20	15C; 17C; 19C
35	18; 20; 22	17C; 19C; 21C
37		17C; 19C; 21C; 23C

^a Crotchet type rims shall be used when tyre inflation pressures over 500 kPa are recommended. When inflation pressure over 500 kPa is recommended, an appropriate rim base protective flap must be used when spoke ends are apparent.

^b Straight side rims are to be used only for non-foldable tyres.

^c Crotchet type rims can be used with rigid and foldable tyres.

^d In case of tubeless application with a tubeless tyre, a special airtight tape shall be used with crotchet type rim, or a special tubeless rim shall be fitted to the bicycle.

Table 4 (continued)

Nominal section width S_N	Recommended rims ^a	
	Straight side rims ^b	Crochet type rims ^c
40	20; 22; 24	17C; 19C; 21C; 23C
42		17C; 19C; 21C; 23C; 25C
44	20; 22; 24; 27	17C; 19C; 21C; 23C; 25C
47		
50	22; 24; 27; 30,5	17C; 19C; 21C; 23C; 25C; 27C
52	24; 27; 30,5	17C; 19C; 21C; 23C; 25C; 27C; 29C
54	27; 30,5	17C; 19C; 21C; 23C; 25C; 27C; 29C
57		
60		
62		

- ^a Crochet type rims shall be used when tyre inflation pressures over 500 kPa are recommended.
When inflation pressure over 500 kPa is recommended, an appropriate rim base protective flap must be used when spoke ends are apparent.
- ^b Straight side rims are to be used only for non-foldable tyres.
- ^c Crochet type rims can be used with rigid and foldable tyres.
- ^d In case of tubeless application with a tubeless tyre, a special airtight tape shall be used with crochet type rim, or a special tubeless rim shall be fitted to the bicycle.

Tables 5 to 7 show the dimensions for the measuring rim width, measuring overall diameter, design section width, design overall diameter, and maximum overall width in service for sizes of interest.

Table 5 — “Wired edge” sizes for section width for $S_N < 28$

Tyre size designation	Measuring rim width code ^a	Tyre dimensions (mm)							
		Design				Maximum in service			
		Section width		Overall diameter		Overall width		Overall diameter	
		Min	Design	Min	Design	Type A	Type D	Type A	Type D
18-622	13C	16	18	660	666	19	—	672	
20-571	13C	18	20	613	619	21	—	625	
20-622				664	670			676	
23-571	15C	21	23	619	625	24	—	631	
23-622				670	676			682	
23-630				678	684			690	
25-540	15C	23	25	587	593	26	—	599	
25-622				674	680			686	
25-630				682	688			694	

^a For dimensions of measuring rims, see ISO 5775-2.

Table 6 — “Wired edge” sizes for section width for $S_N \geq 28$

Tyre size designation	Measuring rim width code ^a	Tyre dimensions (mm)									
		Design				Maximum in service					
		Section width		Overall diameter		Overall width		Overall diameter			
		Min	Design	Min	Design	Type A	Type D	Type A	Type D		
28-622	17C	26	28	683	689	30	36	695	699		
30-622	17C	28	30	687	693	32	38	699	703		
32-622	17C	29	32	691	697	34	40	703	707		
32-630		29	32	699	705		40	711	715		
35-406	19C	32	35	481	487	37	43	493	497		
35-622		32	35	697	703		43	709	713		
37-305	19C	34	37	384	390	40	—	396	—		
37-387		34	37	466	472		—	478	—		
37-406		34	37	485	491		45	497	501		
37-438		34	37	517	523		—	529	—		
37-489		34	37	568	574		45	580	584		
37-540		34	37	619	625		45	631	635		
37-584		34	37	663	669		45	675	679		
37-590		34	37	669	675		45	681	685		
37-622		34	37	701	707		45	713	717		
37-635		34	37	714	720		45	726	730		
40-590		19C	37	40	675		681	43	48	687	691
40-622			37	40	707		713		48	719	723
40-635			37	40	720		726		48	732	736
42-590		19C	39	42	679		685	45	50	691	696
42-622	19C	39	42	711	717	45	50	723	727		
44-622	19C	41	44	715	721	47	52	727	731		
47-305	19C	44	47	404	410	50	—	416	—		
47-355	19C	44	47	454	460		—	466	—		
47-406	19C	44	47	505	511		55	517	521		
47-457	19C	44	47	556	562		55	568	572		
47-507	19C	44	47	606	612		55	618	622		
47-571	19C	44	47	670	676		55	682	686		
47-622	19C	44	47	721	727		55	733	737		
50-406	19C	47	50	511	517		53	58	523	527	
50-407	19C	47	50	612	618	53	58	624	628		
50-622	19C	47	50	727	733	53	58	739	743		
54-406	19C	51	54	519	525	57	62	531	535		
57-203	19C	54	57	322	328	60	"	334	"		
57-406	19C	54	57	525	531	60	62	537	541		
62-203	21C	58	61	332	338	64	"	344	"		

^a For dimensions of measuring rims, see ISO 5775-2.

Table 7 — “Wired edge” sizes for section width for off-road (Type D)

Tyre size designation	Measuring rim width code ^a	Tyre dimensions (mm)							
		Design				Maximum in service			
		Section width		Overall diameter		Overall width		Overall diameter	
		Min	Design	Min	Design	Type A	Type D	Type A	Type D
25-559	15C	23	25	611	617 ^b	26	—	623	
35-559	19C	32	35	636	642	37	43	648	652
37-559	19C	34	37	640	646	40	—	652	—
40-559	19C	37	40	646	652	43	48	658	662
44-559	19C	41	44	654	660	47	52	666	670
47-559	19C	44	47	660	666	50	55	672	676
50-559	19C	47	50	666	672	53	58	678	682
52-559	19C	49	52	670	676	55	60	682	686
54-559	19C	51	54	674	680	57	62	686	690
57-559	19C	54	57	680	686	60	62	692	696
60-559	21C	57	60	686	692	63	65	698	702
62-559	21C	59	62	690	696	65	67	702	706
52-622	19C	49	52	731	737	55	60	743	747
57-622	19C	54	57	741	747	60	65	753	757

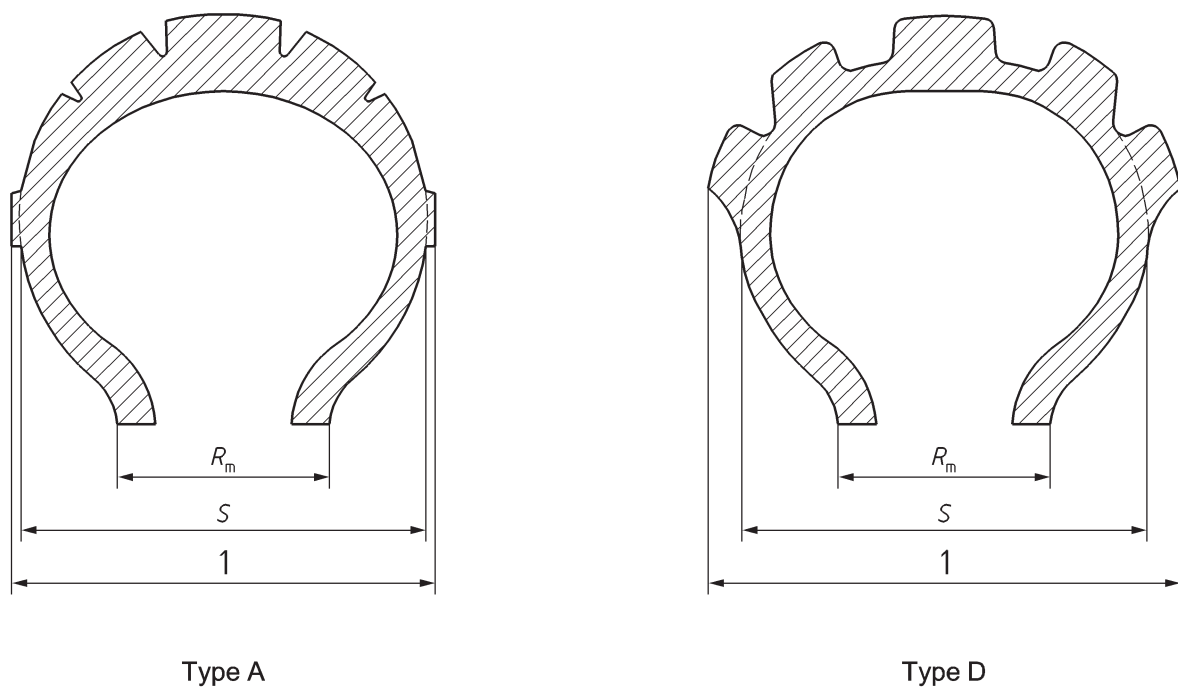
^a For dimensions of measuring rims, see ISO 5775-2.

^b Tyre size 25-559 has a narrow section width <28 so section height = section width + 2,5 mm + 1,5 mm

4.3 Tread configurations

Figure 3 shows the following two principal tread configurations which apply to bicycle tyres:

- Tread type A corresponds to highway service tyres;
- Tread type D corresponds to tyres for on-and-off road service tyres (e.g. mountain bikes).



Key

1 overall width

Figure 3 — Tread configurations

4.4 Tyre dimension measurement method

Before measuring, tyres shall be mounted on the measuring rim, inflated to the recommended inflation pressure, and allowed to stand for a minimum of 24 h at normal room temperature, after which the inflation pressure shall be readjusted to the original value.

4.5 Recommended rim contours

The recommended straight side and crotchet type rim contours correlated to nominal tyre section widths, S_N , are presented in [Table 4](#).

When inflation pressures over 500 kPa are used, appropriate rim tapes shall be fitted.

When mounting the tyre on a permitted rim, the section width of the tyre varies by 0,4 times the difference between the recommended and permitted rim widths.

NOTE 1 For tyres for foldable bicycles, consult the tyre manufacturer for the types of rims permitted.

NOTE 2 Rim dimensions and bead seat characteristics are given in ISO 5775-2.

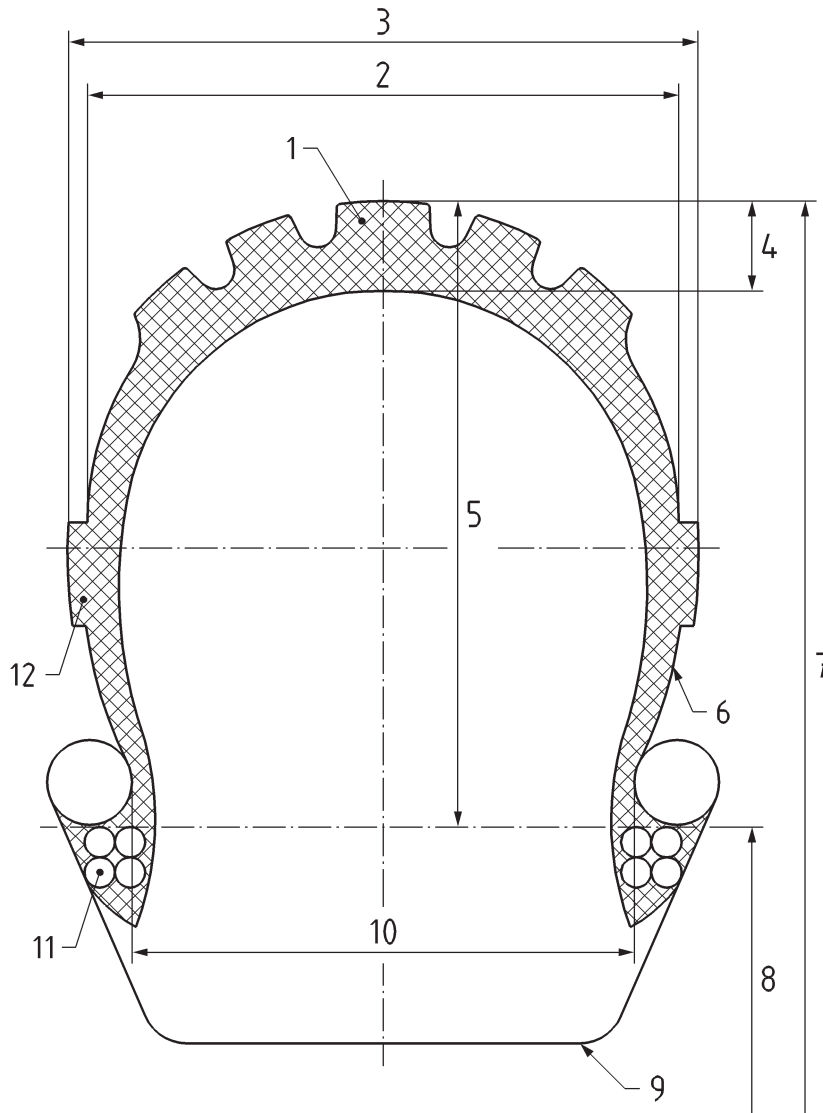
4.6 Minimum inflation pressure

The deflection of the tyre in use shall not exceed 30 % of the tyre section height. The tyre inflation pressure shall not be less than the following:

- 300 kPa for narrow tyres (i.e. with nominal section width 25 and below);
- 200 kPa for other sizes in normal highway service;

— 150 kPa for off-the-road service.

5 “Beaded edge” tyres mounted on hooked bead rims



Key

- | | |
|--------------------------------------|--|
| 1 tread | 8 specified rim diameter (D) |
| 2 section width (S) | 9 rim |
| 3 maximum overall width (W) | 10 measuring rim width (R_m) |
| 4 crown thickness | 11 steel bead wire |
| 5 section height (H) | 12 side wall engraving or decorative pattern |
| 6 side wall | |
| 7 maximum overall diameter (D_o) | |

Figure 4 — Typical section of a cycle tyre showing components and nomenclature

5.1 Tyre designation

The tyre designation for hooked bead rims shall be shown on the sidewall of the tyre and shall include the marking given in [5.1.1](#) to [5.1.3](#).

5.1.1 Tyre size designation

The characteristics shall be indicated as follows:

Overall diameter code × Nominal section width code

5.1.1.1 Overall diameter code

The overall diameter code shall be in whole even numbers.

5.1.1.2 Symbol “×”

The symbol “×” shall be included between the code corresponding to the overall diameter and the code corresponding to the nominal section.

5.1.1.3 Nominal section width code

The nominal section width code shall be expressed in hundredths or thousandths, ending in 5 (for example, 1,375).

5.1.2 Preferred direction of rotation

In the case of a preferred direction of rotation of the tyre, an arrow shall be used to indicate that direction.

5.1.3 Example

A tyre having overall diameter code 20 and nominal section width code 1,375 shall be marked as follows:

20 × 1,375

5.2 Tyre dimensions

See [Figure 4](#) for tread and tyre dimensions.

5.2.1 “Design tyre” dimensions

5.2.1.1 Measuring rim width, R_m , and design dimensions

[Table 8](#) gives the measuring rim width, R_m , the design tyre section width, S , and the design tyre section height, H , for a given nominal section width code.

Table 8 — “Beaded edge” tyres mounted on hooked bead rims — Measuring rim width and design dimensions

Dimensions in millimetres

Nominal section width code	Measuring rim width R_m	Design tyre	
		Section width S	Section height ^a H
1,25	20	32	28
1,375	20	35	31
1,75	25	44	39
2,125	27	54	48

^a The design section height is equal to $0,88 \times$ design section width rounded to whole numbers.

5.2.1.2 Design tyre overall diameter, D_o

The design tyre overall diameter, D_o , is equal to the sum of the nominal outside rim diameter, D_2 , plus twice the design section height, H , as shown in Formula (4):

$$D_o = D_2 + 2H \quad (4)$$

See ISO 5775-2 for existing values of nominal outside rim diameter.

5.2.2 Calculation of maximum tyre dimensions in service

This calculation is for use by vehicle manufacturers in designing for tyre clearance.

5.2.2.1 Maximum overall width in service, W_{max}

The maximum overall width service, W_{max} , is equal to the design tyre section width, S , plus 3 mm as shown in Formula (5):

$$W_{max} = S + 3 \text{ mm} \quad (5)$$

This includes protective ribs, lettering, embellishments, manufacturing tolerances, and growth due to service.

5.2.2.2 Maximum overall diameter in service, $D_{o,max}$

The maximum overall diameter in service, $D_{o,max}$, is equal to the nominal outside rim diameter, D_2 , plus twice the design tyre section height, H , plus 6 mm as shown in Formula (6):

$$D_{o,max} = D_2 + 2H + 6 \text{ mm} \quad (6)$$

This includes manufacturing tolerances and growth due to service.

5.2.3 Determination of nominal overall diameter code

The nominal overall diameter code expresses the value of the design tyre overall diameter, D_o , as in Formula (4), multiplied by 0,04 and rounded to the nearest even number. (For example, if $D_o = 450$, nominal overall diameter code = 18.)

5.2.4 Values

Table 9 shows the dimensions for measuring rim width, measuring rim overall diameter, design section width, design overall diameter, maximum overall width in service, and maximum overall diameter in service according to 5.2.1 and 5.2.2 for sizes of interest.

Table 9 — “Beaded edge” tyres mounted on hooked bead rims — Measuring rim, design tyre and in service dimensions

Dimensions in millimetres

Tyre size designation	Measuring rim		Design tyre		In-service	
	Width	Overall diameter	Section width	Overall diameter	Maximum overall width	Maximum overall diameter
20 × 1,25	20	458,8	32	515	35	521
24 × 1,25		560,4		616		622
26 × 1,25		611,2		667		673
20 × 1,375	20	458,8	35	521	38	527
24 × 1,375		560,4		622		628
26 × 1,375		611,2		673		679
16 × 1,75	25	320,7	44	399	47	405
18 × 1,75		371,5		449		455
20 × 1,75		422,3		500		506
22 × 1,75		473,1		551		557
24 × 1,75		523,9		602		608
26 × 1,75		574,7		653		659
16 × 2,125	27	320,7	54	417	57	423
20 × 2,125		422,3		518		524
24 × 2,125		523,9		620		626
26 × 2,125		574,7		671		677

5.3 Tyre dimension measurement method

Before measuring, tyres shall be mounted on the measuring rim, inflated to the recommended inflation pressure, and allowed to stand for a minimum of 24 h at normal room temperature, after which the inflation pressure shall be readjusted to the original value.

5.4 Tyres than can be mounted on both hooked bead and straight side rims

5.4.1 Tyre designation

Tyres of special construction can be designed in such a way as to permit their mounting both on hooked bead and straight side rims of similar diameters. In this case, the tyre shall be marked with the tyre designations of both categories, the designations being separated by a solidus, for example:

20 × 1,375 / 47 – 406

5.4.2 Maximum tyre dimensions in service

The maximum tyre dimensions in service of the tyre shall conform to those of each tyre designation when fitted on the proper rim.

Annex A (informative)

Old marking

Table A.1 — Tyres mounted on straight side rims — Correspondence between “tyre size designation” and “old markings”

Tyre size designation	Old marking	
28 — 590	26 × 1 3/8 × 1 1/8	
28 — 622	28 × 1 5/8 × 1 1/8 28 × 1 5/8 × 1 1/4 × 1 1/8	700 × 28 C 700 C Carrera
28 — 630	27 × 1 1/4 50	
28 — 635		700 B
28 — 642	28 × 1 3/8 × 1 1/8	700 × 28 A
32 — 239	12 × 1 3/8 × 1 1/4	300 × 32
32 — 248	12 × 1 1/4	300 × 32 A
32 — 288	14 × 1 3/8 × 1 1/4	350 × 32
32 — 298	14 × 1 1/4	350 × 32 A
32 — 340	16 × 1 3/8 × 1 1/4	400 A 400 × 32
32 — 349	16 × 1 1/4 NL	400 × 32 A
32 — 357	17 × 1 1/4	
32 — 369	16 × 1 1/4	
32 — 390	18 × 1 3/8 × 1 1/4	450 A 450 × 32
32 — 400	18 × 1 1/4	450 × 32 A
32 — 438		500 × 32 ANL
32 — 440	20 × 1 3/8 × 1 1/4	500 A 500 × 32
32 — 451	20 × 1 1/4	500 × 32 A
32 — 489		550 × 32 ANL
32 — 490	22 × 1 3/8 × 1 1/4	550 A 550 × 32
32 — 501	22 × 1 1/4	550 × 32 A
32 — 508	22 × 1 1/4 × 1	
32 — 540	24 × 1 3/8 × 1 1/4	
32 — 541	24 × 1 3/8 × 1 1/4 NL	600 A 600 × 32 A
32 — 547	24 × 1 1/4	
32 — 590	26 × 1 3/8 × 1 1/4	650 × 32 A
32 — 597	26 × 1 1/4	

Table A.1 (continued)

Tyre size designation	Old marking	
32 — 622	28 × 1 5/8 × 1 1/4 28 × 1 1/4 × 1 3/4	700 × 32 C 700 × C Course
32 — 630	27 × 1 1/4	
32 — 635	28 × 1 1/2 × 1 1/8	700 × 28 B 700 B Course
37 — 288		350 A Comfort 350 A 1/2 Balloon
37 — 298	14 × 1 3/8	
37 — 337	16 × 1 3/8 ANL	
37 — 340	16 × 1 3/8 NL	400 A Comfort 400 A 1/2 Balloon 400 × 42 A 400 × 35 A
37 — 349	16 × 1 3/8 NL	
37 — 387	18 × 1 3/8	
37 — 390		450 A Comfort 450 A 1/2 Balloon
37 — 400	18 × 1 3/8	
37 — 438	20 × 1 3/8 NL	
37 — 440		500 A Comfort 500 A 1/2 Balloon
37 — 451	20 × 1 3/8	
37 — 489	22 × 1 3/8 NL	
37 — 490		550 A Comfort 550 A 1/2 Balloon
37 — 498	22 × 1 3/8 × 1 1/4 NL	
37 — 501	22 × 1 3/8	
37 — 540	24 × 1 3/8	
37 — 541		600 A Comfort 600 A 1/2 Balloon 600 × 35 A
37 — 565	25 × 1 3/8	
37 — 584	26 × 1 1/2 × 1 3/8 26 × 1 3/8 × 1 1/2	
37 — 590	26 × 1 3/8	650 A 650 × 35 A
37 — 622	28 × 1 5/8 × 1 3/8 28 × 1 3/8 × 1 5/8	700 × 35 C
37 — 642	28 × 1 3/8	700 × 35 A
40 — 279	14 × 1 1/2	350 × 38 B

Table A.1 (continued)

Tyre size designation	Old marking	
40 — 288	14 × 1 1/2 NL	350 × 38
40 — 330	16 × 1 1/2	400 × 38 B
40 — 432	20 × 1 1/2	
40 — 440	20 × 1 1/2 NL	500 × 38
40 — 534	24 × 1 1/2	
40 — 540	24 × 1 3/8 × 1 1/2 24 × 1 1/2 × 1 3/8	
40 — 571	26 × 1 1/2 C.S. 26 × 1 5/8 × 1 1/2 NL	
40 — 584	26 × 1 1/2	650 × 35 B 650 × 38 B
40 — 590	26 × 1 3/8 × 1 1/2 NL	
40 — 622	28 × 1 5/8 × 1 1/2 NL	700 × 38 C
40 — 635	28 × 1 1/2 × 1 3/8 28 × 1 1/2	700 B Standard 700 × 35 B 700 × 38 B
44 — 194	10 × 1 5/8	
44 — 288	14 × 1 3/8 × 1 5/8	350 A 350 × 42 A
44 — 340	16 × 1 5/8	
44 — 428	20 × 1 5/8 × 1 1/2	
44 — 484	22 × 1 5/8 × 1 1/2	
44 — 531	24 × 1 5/8 × 1 1/2	
44 — 584	26 × 1 1/2 × 1 5/8 26 × 1 5/8 × 1 1/2 26 × 1 3/4 × 1 1/2	650 B Semi-comfort 650 B 1/2 Balloon 650 × 42 B
44 — 622	28 × 1 5/8	700 × 42 C
44 — 635	28 × 1 5/8 × 1 1/2 28 × 1 1/2 × 1 5/8	
47 — 203	12 1/2 × 1,75 × 2 1/4	
47 — 222	11 × 1 3/4	
47 — 305	16 × 1,75 × 2	
47 — 317	16 × 1 3/4	
47 — 355	18 × 1,75 × 2	
47 — 406	20 × 1,75 × 2 20 × 1,75	
47 — 419	20 × 1 3/4	
47 — 501 T	24 × 1 3/4 R	600 × 45 C
47 — 507	24 × 1,75 × 2 24 × 1,75	

Table A.1 (continued)

Tyre size designation	Old marking	
47 — 520	24 × 1 3/4	
47 — 559	26 × 1,75 × 2 26 × 1,75	
47 — 571	26 × 1 3/4 26 × 1 5/8	650 × 45 C 650 C S.C.
45 — 584	26 × 1,75 × 1 1/2 26 × 1 1/2 × 1 3/4	650 × 45 B
47 — 622	28 × 1 3/4 28 × 1,75 28 × 1 5/8 × 1 3/4	700 × 45 C
54 — 298	14 × 2 × 1 3/4	
54 — 305	16 × 2	
54 — 400	20 × 2 × 1 3/4 20 × 2 F 4 J	
54 — 406	20 × 2.00	
54 — 428	20 × 2	
54 — 559	26 × 2.00	
54 — 571	26 × 1 3/4 × 2 26 × 2 × 1 3/4 26 × 2	650 × 50 C
54 — 584	26 × 2 × 2 1/2 26 × 1 1/2 × 2	
54 — 609	28 × 2	
57 — 239		300 × 55 A
57 — 251 T		315 × 55
57 — 305	16 × 2,125 16 × 2,125 × 2	
57 — 390		450 × 55 A
57 — 406	20 × 2,125 20 × 2,125 × 2	
57 — 507	24 × 2,125 24 × 2,125 × 2	
57 — 559	26 × 2,125 26 × 2,125 × 2	
62 — 203	12 1/2 × 2 1/4	320 × 57
62 — 305	16 × 2,125	
67 — 203	13 × 2 1/2	330 × 65
67 — 381	20 × 2 1/2	

British Standards Institution (BSI)

BSI is the national body responsible for preparing British Standards and other standards-related publications, information and services.

BSI is incorporated by Royal Charter. British Standards and other standardization products are published by BSI Standards Limited.

About us

We bring together business, industry, government, consumers, innovators and others to shape their combined experience and expertise into standards-based solutions.

The knowledge embodied in our standards has been carefully assembled in a dependable format and refined through our open consultation process. Organizations of all sizes and across all sectors choose standards to help them achieve their goals.

Information on standards

We can provide you with the knowledge that your organization needs to succeed. Find out more about British Standards by visiting our website at bsigroup.com/standards or contacting our Customer Services team or Knowledge Centre.

Buying standards

You can buy and download PDF versions of BSI publications, including British and adopted European and international standards, through our website at bsigroup.com/shop, where hard copies can also be purchased.

If you need international and foreign standards from other Standards Development Organizations, hard copies can be ordered from our Customer Services team.

Subscriptions

Our range of subscription services are designed to make using standards easier for you. For further information on our subscription products go to bsigroup.com/subscriptions.

With **British Standards Online (BSOL)** you'll have instant access to over 55,000 British and adopted European and international standards from your desktop. It's available 24/7 and is refreshed daily so you'll always be up to date.

You can keep in touch with standards developments and receive substantial discounts on the purchase price of standards, both in single copy and subscription format, by becoming a **BSI Subscribing Member**.

PLUS is an updating service exclusive to BSI Subscribing Members. You will automatically receive the latest hard copy of your standards when they're revised or replaced.

To find out more about becoming a BSI Subscribing Member and the benefits of membership, please visit bsigroup.com/shop.

With a **Multi-User Network Licence (MUNL)** you are able to host standards publications on your intranet. Licences can cover as few or as many users as you wish. With updates supplied as soon as they're available, you can be sure your documentation is current. For further information, email bsmusales@bsigroup.com.

BSI Group Headquarters

389 Chiswick High Road London W4 4AL UK

Revisions

Our British Standards and other publications are updated by amendment or revision.

We continually improve the quality of our products and services to benefit your business. If you find an inaccuracy or ambiguity within a British Standard or other BSI publication please inform the Knowledge Centre.

Copyright

All the data, software and documentation set out in all British Standards and other BSI publications are the property of and copyrighted by BSI, or some person or entity that owns copyright in the information used (such as the international standardization bodies) and has formally licensed such information to BSI for commercial publication and use. Except as permitted under the Copyright, Designs and Patents Act 1988 no extract may be reproduced, stored in a retrieval system or transmitted in any form or by any means – electronic, photocopying, recording or otherwise – without prior written permission from BSI. Details and advice can be obtained from the Copyright & Licensing Department.

Useful Contacts:

Customer Services

Tel: +44 845 086 9001

Email (orders): orders@bsigroup.com

Email (enquiries): cservices@bsigroup.com

Subscriptions

Tel: +44 845 086 9001

Email: subscriptions@bsigroup.com

Knowledge Centre

Tel: +44 20 8996 7004

Email: knowledgecentre@bsigroup.com

Copyright & Licensing

Tel: +44 20 8996 7070

Email: copyright@bsigroup.com



...making excellence a habit.™