

BS ISO 5692-3:2011



BSI Standards Publication

# Agricultural vehicles — Mechanical connections on towed vehicles

Part 3: Swivel hitch rings

**bsi.**

...making excellence a habit.™

**National foreword**

This British Standard is the UK implementation of ISO 5692-3:2011.

The UK participation in its preparation was entrusted to Technical Committee AGE/6, Agricultural tractors and forestry machinery.

A list of organizations represented on this committee can be obtained on request to its secretary.

This publication does not purport to include all the necessary provisions of a contract. Users are responsible for its correct application.

© BSI 2011

ISBN 978 0 580 66538 7

ICS 65.060.10

**Compliance with a British Standard cannot confer immunity from legal obligations.**

This British Standard was published under the authority of the Standards Policy and Strategy Committee on 31 July 2011.

**Amendments issued since publication**

Date	Text affected
------	---------------

---

---

---

**Agricultural vehicles — Mechanical  
connections on towed vehicles —**

Part 3:  
**Swivel hitch rings**

*Véhicules agricoles — Liaisons mécaniques sur véhicules  
remorqués —*

*Partie 3: Anneaux d'attelage rotatifs*





**COPYRIGHT PROTECTED DOCUMENT**

© ISO 2011

All rights reserved. Unless otherwise specified, no part of this publication may be reproduced or utilized in any form or by any means, electronic or mechanical, including photocopying and microfilm, without permission in writing from either ISO at the address below or ISO's member body in the country of the requester.

ISO copyright office  
Case postale 56 • CH-1211 Geneva 20  
Tel. + 41 22 749 01 11  
Fax + 41 22 749 09 47  
E-mail [copyright@iso.org](mailto:copyright@iso.org)  
Web [www.iso.org](http://www.iso.org)

Published in Switzerland

## Foreword

ISO (the International Organization for Standardization) is a worldwide federation of national standards bodies (ISO member bodies). The work of preparing International Standards is normally carried out through ISO technical committees. Each member body interested in a subject for which a technical committee has been established has the right to be represented on that committee. International organizations, governmental and non-governmental, in liaison with ISO, also take part in the work. ISO collaborates closely with the International Electrotechnical Commission (IEC) on all matters of electrotechnical standardization.

International Standards are drafted in accordance with the rules given in the ISO/IEC Directives, Part 2.

The main task of technical committees is to prepare International Standards. Draft International Standards adopted by the technical committees are circulated to the member bodies for voting. Publication as an International Standard requires approval by at least 75 % of the member bodies casting a vote.

Attention is drawn to the possibility that some of the elements of this document may be the subject of patent rights. ISO shall not be held responsible for identifying any or all such patent rights.

ISO 5692-3 was prepared by Technical Committee ISO/TC 23, *Tractors and machinery for agriculture and forestry*, Subcommittee SC 4, *Tractors*.

ISO 5692 consists of the following parts, under the general title *Agricultural vehicles — Mechanical connections on towed vehicles*:

- *Part 1: Dimensions for hitch rings of 50/30 mm cross section*
- *Part 2: Coupling ring 40 with socket*
- *Part 3: Swivel hitch rings*



# Agricultural vehicles — Mechanical connections on towed vehicles —

## Part 3: Swivel hitch rings

### 1 Scope

This part of ISO 5692 specifies the requirements for hitch rings used for the attachment of agricultural trailers and implements to the rear of self-propelled agricultural vehicles equipped with a non-swivel clevis coupling as specified in ISO 6489-5.

### 2 Normative references

The following referenced documents are indispensable for the application of this document. For dated references, only the edition cited applies. For undated references, the latest edition of the referenced document (including any amendments) applies.

ISO 6489-5:2011, *Agricultural vehicles — Mechanical connections between towed and towing vehicles — Part 5: Specifications for non-swivel clevis couplings*

### 3 Terms and definitions

For the purposes of this document, the following terms and definitions apply.

#### 3.1

##### **D value**

*D*

mathematically established representative force for the horizontal component of the force acting on the coupling in the longitudinal axis of the machine

NOTE It is expressed in kilonewtons (kN).

#### 3.2

##### **vertical load on the coupling point**

*S*

load transmitted, under static conditions, on the reference centre of the mechanical coupling

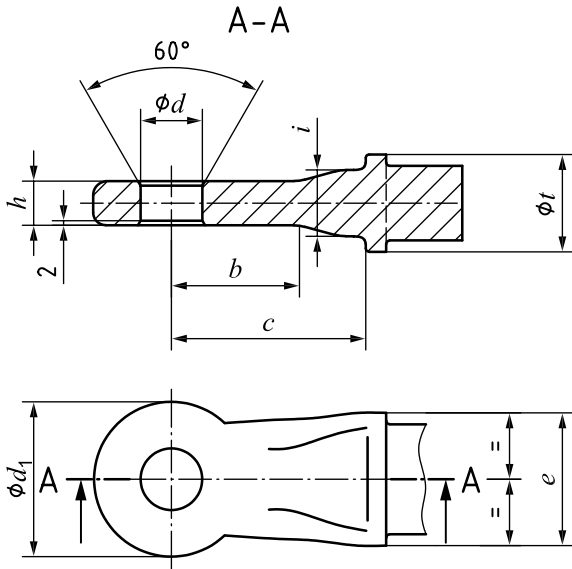
NOTE It is expressed in kilograms (kg).

## 4 Interchangeability dimensions

### 4.1 General

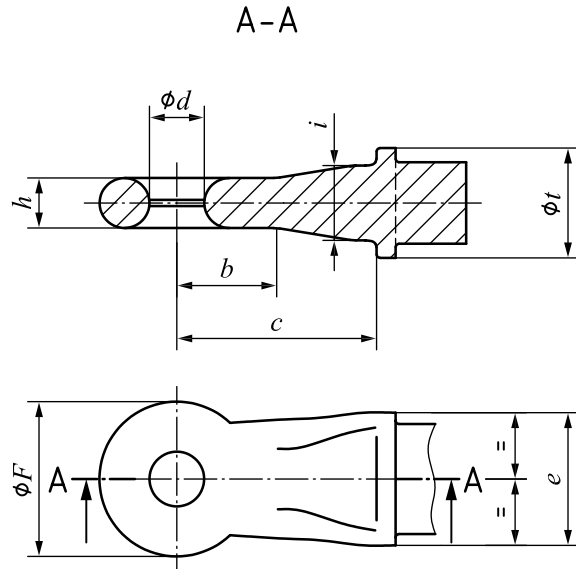
Hitch ring dimensions shall be as shown in Figure 1 or 2 and as specified in Table 1.

Allowable loads are indicated in Table 1.



NOTE Dimensions are given in Table 1.

Figure 1 — Cylindrical eye configuration



$$F = d + 2h$$

NOTE Dimensions are given in Table 1.

Figure 2 — Round eye configuration

Table 1 — Shapes, dimensions and allowable loads

Vertical load <i>S</i> kg	D value <i>D</i> kN	Shape	Coupling ring mm														
			Cylindrical eye configuration							Round eye configuration							
			<i>d</i>	<i>b</i>	<i>c</i>	<i>e</i>	<i>i</i>	<i>h</i>	<i>d</i> <sub>1</sub>	<i>t</i>	<i>d</i>	<i>b</i>	<i>c</i>	<i>e</i>	<i>i</i>	<i>t</i>	<i>h</i>
≤1 000	≤35	W	±0,5	min.	min.	max.	max.	±1	±3	min.	±0,5	min.	min.	max.	max.	min.	±1
≤2 000	≤90	X	28	50	80	30	30	20	70	44	22	40	80	30	30	44	20
≤3 000	≤120	Y	45	70	100	60	40	32	105	63	35	50	100	60	40	63	30
≤3 000	≤120	Z	62	90	120		55	40	132	73	50	55	140		55	73	35
≤3 000	≤120	Z	73	100	140	75	60	42	157	78	68	60	160	75	60	78	42

### 4.2 Trailer shank travel angles

When the trailer shank, fitted with the specified hitch ring, is fixed to the towing vehicle, the shank shall be free to turn so that the angles formed with the horizontal situated in the towing vehicle's plane of symmetry and passing through the coupling point have the following minimum values.



- a) Angle of yaw: rotation around a vertical axis passing through the coupling point, with a minimum value of  $60^\circ$  on both sides (see Figure 3).
- b) Angle of pitch: rotation around a horizontal axis passing through the coupling point and perpendicular to the machine's longitudinal plane of symmetry, with a minimum value of  $20^\circ$  top and bottom (see Figure 4).

Allowance should be made for the towing machine being up to  $\pm 3^\circ$  from horizontal, due to front/rear tyre sizes.

- c) Angle of roll: rotation around a horizontal axis passing through the coupling point and located in the machine's plane of symmetry, with a minimum value of  $20^\circ$  top and bottom (see Figure 5).

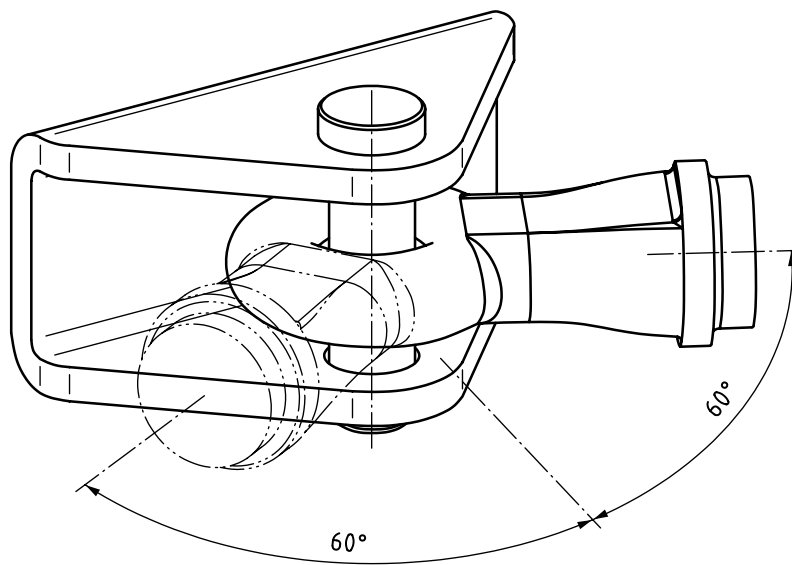


Figure 3 — Angle of yaw

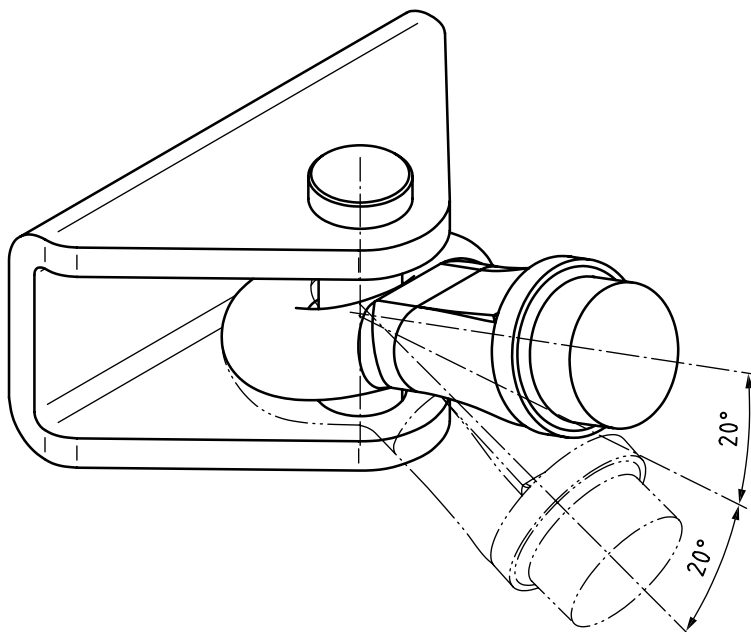


Figure 4 — Angle of pitch

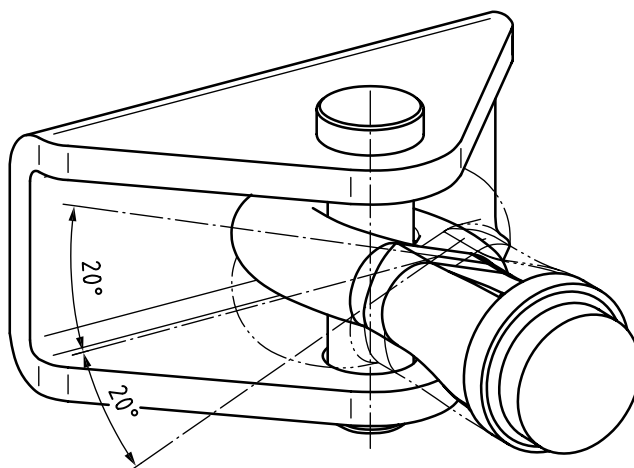


Figure 5 — Angle of roll

## 5 Constructional requirements

Hitch rings in accordance with this part of ISO 5692 shall be substantially toroidal or cylindrical and shall be manufactured by forging. The removable hitch ring shall be jointed to a sleeve fixed on the trailer drawbar.

## 6 Permissible mechanical connections between rings and couplings

The permissible mechanical connections between rings and couplings are given in Table 2.

Table 2 — Permissible mechanical connections between rings and couplings

Ring	Coupling
ISO 5692-3 Shape W	ISO 6489-5 Shape w
ISO 5692-3 Shape X	ISO 6489-5 Shape x
ISO 5692-3 Shape Y	ISO 6489-5 Shape y
ISO 5692-3 Shape Z	ISO 6489-5 Shape z

## 7 Marking

The swivel hitch ring shall have a permanent and visible ring shape letter marking for identification.

## Annex A (informative)

### Recommended mechanical connection combinations between towing and towed vehicles

Towing vehicle	Towed vehicle
ISO 6489-1:1991, hook type	ISO 5692:1979/ISO 5692-1:2004, hitch ring (50 mm hole centre, 30 mm ring diameter)
ISO 6489-1:2001, hook type <sup>a</sup>	ISO 5692:1979/ISO 5692-1:2004, hitch ring (50 mm hole centre, 30 mm ring diameter)
	ISO 20019:2001, hitch ring (50 mm hole centre, 30 to 41 mm ring diameter)
ISO 6489-2:2002, bolt type	ISO 5692-2:2002, coupling ring (40 mm socket)
	ISO 8755:1986, 40 mm drawbar coupling <sup>b</sup>
	ISO 1102:1986, 50 mm drawbar coupling <sup>b</sup>
ISO 6489-4:2004, piton type	ISO 5692:1979/ISO 5692-1:2004, hitch ring (50 mm hole centre, 30 mm ring diameter)
ISO 6489-5:2011, non-swivel clevis coupling	ISO 5692-3:2011, swivel hitch rings
ISO 24347:2005, ball type	ISO 24347 (80 mm ball diameter)
Only these combinations are recommended.	
<sup>a</sup> Connecting an ISO 6489-1:2001 hook, manufactured in accordance with the maximum sizes permitted, to hitch rings in accordance with ISO 5692-1 and of minimum dimensions (30 mm ring diameter) according to ISO 20019 could result in a "jerky" connection between the tractor and the trailer and less driving comfort.	
<sup>b</sup> Primarily used on trailers towed behind trucks (on-road).	

## Bibliography

- [1] ISO 1102:1986, *Commercial road vehicles — Mechanical connections between towing vehicles and trailers — 50 mm drawbar couplings*
- [2] ISO 5692:1979, *Agricultural vehicles — Mechanical connections on towed vehicles — Hitch-rings — Specifications*
- [3] ISO 5692-1:2004, *Agricultural vehicles — Mechanical connections on towed vehicles — Part 1: Dimensions for hitch rings of 50/30 mm cross section*
- [4] ISO 5692-2:2002, *Agricultural vehicles — Mechanical connections on towed vehicles — Part 2: Coupling ring 40 with socket*
- [5] ISO 6489-1:1991, *Agricultural vehicles — Mechanical connections on towing vehicles — Part 1: Hook type*
- [6] ISO 6489-1:2001, *Agricultural vehicles — Mechanical connections between towed and towing vehicles — Part 1: Dimensions of hitch-hooks*
- [7] ISO 6489-2:2002, *Agricultural vehicles — Mechanical connections between towed and towing vehicles — Part 2: Specifications for clevis coupling 40*
- [8] ISO 6489-4:2004, *Agricultural vehicles — Mechanical connections between towed and towing vehicles — Part 4: Dimensions of piton-type coupling*
- [9] ISO 8755:1986, *Commercial road vehicles — Mechanical connections between towing vehicles and trailers — 40 mm drawbar coupling*
- [10] ISO 20019:2001, *Agricultural vehicles — Mechanical connections on towed vehicles — Dimensions for hitch rings*
- [11] ISO 24347:2005, *Agricultural vehicles — Mechanical connections between towed and towing vehicles — Dimensions of ball-type coupling device (80 mm)*







# British Standards Institution (BSI)

BSI is the national body responsible for preparing British Standards and other standards-related publications, information and services.

BSI is incorporated by Royal Charter. British Standards and other standardization products are published by BSI Standards Limited.

## About us

We bring together business, industry, government, consumers, innovators and others to shape their combined experience and expertise into standards-based solutions.

The knowledge embodied in our standards has been carefully assembled in a dependable format and refined through our open consultation process. Organizations of all sizes and across all sectors choose standards to help them achieve their goals.

## Information on standards

We can provide you with the knowledge that your organization needs to succeed. Find out more about British Standards by visiting our website at [bsigroup.com/standards](http://bsigroup.com/standards) or contacting our Customer Services team or Knowledge Centre.

## Buying standards

You can buy and download PDF versions of BSI publications, including British and adopted European and international standards, through our website at [bsigroup.com/shop](http://bsigroup.com/shop), where hard copies can also be purchased.

If you need international and foreign standards from other Standards Development Organizations, hard copies can be ordered from our Customer Services team.

## Subscriptions

Our range of subscription services are designed to make using standards easier for you. For further information on our subscription products go to [bsigroup.com/subscriptions](http://bsigroup.com/subscriptions).

With **British Standards Online (BSOL)** you'll have instant access to over 55,000 British and adopted European and international standards from your desktop. It's available 24/7 and is refreshed daily so you'll always be up to date.

You can keep in touch with standards developments and receive substantial discounts on the purchase price of standards, both in single copy and subscription format, by becoming a **BSI Subscribing Member**.

**PLUS** is an updating service exclusive to BSI Subscribing Members. You will automatically receive the latest hard copy of your standards when they're revised or replaced.

To find out more about becoming a BSI Subscribing Member and the benefits of membership, please visit [bsigroup.com/shop](http://bsigroup.com/shop).

With a **Multi-User Network Licence (MUNL)** you are able to host standards publications on your intranet. Licences can cover as few or as many users as you wish. With updates supplied as soon as they're available, you can be sure your documentation is current. For further information, email [bsmusales@bsigroup.com](mailto:bsmusales@bsigroup.com).

## BSI Group Headquarters

389 Chiswick High Road London W4 4AL UK

## Revisions

Our British Standards and other publications are updated by amendment or revision.

We continually improve the quality of our products and services to benefit your business. If you find an inaccuracy or ambiguity within a British Standard or other BSI publication please inform the Knowledge Centre.

## Copyright

All the data, software and documentation set out in all British Standards and other BSI publications are the property of and copyrighted by BSI, or some person or entity that owns copyright in the information used (such as the international standardization bodies) and has formally licensed such information to BSI for commercial publication and use. Except as permitted under the Copyright, Designs and Patents Act 1988 no extract may be reproduced, stored in a retrieval system or transmitted in any form or by any means – electronic, photocopying, recording or otherwise – without prior written permission from BSI. Details and advice can be obtained from the Copyright & Licensing Department.

## Useful Contacts:

### Customer Services

**Tel:** +44 845 086 9001

**Email (orders):** [orders@bsigroup.com](mailto:orders@bsigroup.com)

**Email (enquiries):** [cservices@bsigroup.com](mailto:cservices@bsigroup.com)

### Subscriptions

**Tel:** +44 845 086 9001

**Email:** [subscriptions@bsigroup.com](mailto:subscriptions@bsigroup.com)

### Knowledge Centre

**Tel:** +44 20 8996 7004

**Email:** [knowledgecentre@bsigroup.com](mailto:knowledgecentre@bsigroup.com)

### Copyright & Licensing

**Tel:** +44 20 8996 7070

**Email:** [copyright@bsigroup.com](mailto:copyright@bsigroup.com)



...making excellence a habit.™