

BS ISO 4689-3:2017



BSI Standards Publication

Iron ores — Determination of sulfur content

Part 3: Combustion/infrared method

National foreword

This British Standard is the UK implementation of ISO 4689-3:2017. It supersedes BS ISO 4689-3:2015 which is withdrawn.

The UK participation in its preparation was entrusted to Technical Committee ISE/58, Iron ores.

A list of organizations represented on this committee can be obtained on request to its secretary.

This publication does not purport to include all the necessary provisions of a contract. Users are responsible for its correct application.

© The British Standards Institution 2017.
Published by BSI Standards Limited 2017

ISBN 978 0 580 95542 6

ICS 73.060.10

Compliance with a British Standard cannot confer immunity from legal obligations.

This British Standard was published under the authority of the Standards Policy and Strategy Committee on 31 March 2017.

Amendments/corrigenda issued since publication

Date	Text affected
------	---------------

INTERNATIONAL
STANDARD

BS ISO 4689-3:2017

ISO
4689-3

Third edition
2017-03

**Iron ores — Determination of sulfur
content —**

Part 3:
Combustion/infrared method

Minerais de fer — Dosage du soufre —

Partie 3: Méthode par combustion et infrarouge



Reference number
ISO 4689-3:2017(E)

© ISO 2017



COPYRIGHT PROTECTED DOCUMENT

© ISO 2017, Published in Switzerland

All rights reserved. Unless otherwise specified, no part of this publication may be reproduced or utilized otherwise in any form or by any means, electronic or mechanical, including photocopying, or posting on the internet or an intranet, without prior written permission. Permission can be requested from either ISO at the address below or ISO's member body in the country of the requester.

ISO copyright office
Ch. de Blandonnet 8 • CP 401
CH-1214 Vernier, Geneva, Switzerland
Tel. +41 22 749 01 11
Fax +41 22 749 09 47
copyright@iso.org
www.iso.org

Contents

Page

Foreword	iv
Introduction	v
1 Scope	1
2 Normative references	1
3 Terms and definitions	1
4 Principle	2
5 Reagents	2
6 Apparatus	2
7 Sampling and samples	5
7.1 Laboratory sample.....	5
7.2 Preparation of predried test samples.....	5
8 Procedure	5
8.1 Number of determinations.....	5
8.2 Test portion.....	5
8.3 Blank test and check test.....	5
8.4 Determination.....	6
8.5 Preparation of calibration graph.....	6
9 Expression of results	7
9.1 Calculation of sulfur content.....	7
9.2 General treatment of results.....	7
9.2.1 Repeatability and permissible tolerance.....	7
9.2.2 Determination of analytical result.....	7
9.2.3 Between-laboratories precision.....	8
9.2.4 Check for trueness.....	8
9.2.5 Calculation of final result.....	9
10 Test report	9
Annex A (normative) Flowsheet of the procedure for the acceptance of analytical values for test samples	11
Annex B (informative) Derivation of repeatability and permissible tolerance equations	12
Annex C (informative) Precision data obtained by international analytical trial	13
Bibliography	14

Foreword

ISO (the International Organization for Standardization) is a worldwide federation of national standards bodies (ISO member bodies). The work of preparing International Standards is normally carried out through ISO technical committees. Each member body interested in a subject for which a technical committee has been established has the right to be represented on that committee. International organizations, governmental and non-governmental, in liaison with ISO, also take part in the work. ISO collaborates closely with the International Electrotechnical Commission (IEC) on all matters of electrotechnical standardization.

The procedures used to develop this document and those intended for its further maintenance are described in the ISO/IEC Directives, Part 1. In particular the different approval criteria needed for the different types of ISO documents should be noted. This document was drafted in accordance with the editorial rules of the ISO/IEC Directives, Part 2 (see www.iso.org/directives).

Attention is drawn to the possibility that some of the elements of this document may be the subject of patent rights. ISO shall not be held responsible for identifying any or all such patent rights. Details of any patent rights identified during the development of the document will be in the Introduction and/or on the ISO list of patent declarations received (see www.iso.org/patents).

Any trade name used in this document is information given for the convenience of users and does not constitute an endorsement.

For an explanation on the voluntary nature of standards, the meaning of ISO specific terms and expressions related to conformity assessment, as well as information about ISO's adherence to the World Trade Organization (WTO) principles in the Technical Barriers to Trade (TBT) see the following URL: www.iso.org/iso/foreword.html.

This document was prepared by Technical Committee ISO/TC 102, *Iron ore and direct reduced iron*, Subcommittee SC 2, *Chemical analysis*.

This third edition cancels and replaces the second edition (ISO 4689-3:2015), of which it constitutes a minor revision, with the following changes:

- “0,001 %” has been inserted before “sulfur” in [5.1](#);
- in [6.7](#):
 - under “Combustion crucible”, “Length” has been changed to “Height”;
 - under “Combustion crucible”, outer diameter has been changed from “10 mm” to “26 mm”;
 - under “Combustion crucible”, inner diameter has been changed from “26 mm” to “10 mm”;
- “0,2 g” has been added after “sulfur” in [8.2](#);
- [Formula \(7\)](#) and the relevant descriptions in [9.2.4](#) have been modified to harmonize this clause across all standards for which ISO/TC 102/SC 2 is responsible.

A list of all parts in the ISO 4689 series can be found on the ISO website.

Introduction

ISO 4689-2 was originally published as ISO 4690:1986. Under a policy of rationalization of the numbering system used in ISO/TC 102, it has been decided to re-designate ISO 4690:1986 as ISO 4689-2. It was further decided to introduce a combustion/infrared method, numbered ISO 4689-3, i.e. this document.

When next revised, ISO 4689:1986 will be re-designated as ISO 4689-1.

Iron ores — Determination of sulfur content —

Part 3: Combustion/infrared method

WARNING — This document may involve hazardous materials, operations, and equipment. This document does not purport to address all of the safety problems associated with its use. It is the responsibility of the user of this document to establish appropriate health and safety practices and determine the applicability of regulatory limitations prior to use.

1 Scope

This document specifies a combustion/infrared method, using a high-frequency induction furnace, for the determination of the sulfur content of iron ores.

This method is applicable to sulfur contents between 0,002 % (mass fraction) and 0,25 % (mass fraction) in natural iron ores, iron ore concentrates and agglomerates, including sinter products. The method is not applicable to iron ores containing more than 1,0 % (mass fraction) of combined water. The apparatus, of which the metal filter is equipped with a heating device, can be applied to iron ores containing less than 3,0 % (mass fraction) of combined water.

2 Normative references

The following documents are referred to in the text in such a way that some or all of their content constitutes requirements of this document. For dated references, only the edition cited applies. For undated references, the latest edition of the referenced document (including any amendments) applies.

ISO 648, *Laboratory glassware — Single-volume pipettes*

ISO 1042, *Laboratory glassware — One-mark volumetric flasks*

ISO 2596, *Iron ores — Determination of hygroscopic moisture in analytical samples — Gravimetric, Karl Fischer and mass-loss methods*

ISO 3082, *Iron ores — Sampling and sample preparation procedures*

ISO 7764, *Iron ores — Preparation of predried test samples for chemical analysis*

ISO Guide 35, *Reference materials — General and statistical principles for certification*

3 Terms and definitions

No terms and definitions are listed in this document.

ISO and IEC maintain terminological databases for use in standardization at the following addresses:

— IEC Electropedia: available at <http://www.electropedia.org/>

— ISO Online browsing platform: available at <http://www.iso.org/obp>

4 Principle

The sample is mixed with a flux containing iron, tin and tungsten and heated in a high-frequency induction furnace, using oxygen as a supporting fuel and carrier gas.

The evolved sulfur dioxide is carried by oxygen into the cell of an infrared detector, where the absorption scale is read.

5 Reagents

During analysis, use only reagents of recognized analytical grade, and only distilled water or water of equivalent purity.

5.1 Metallic iron, particle size 0,2 mm to 1,2 mm containing less than 0,001 % sulfur.

5.2 Magnesium perchlorate, $Mg(ClO_4)_2$, anhydrous, free flowing, particle size 0,5 mm to 2 mm.

5.3 Iron(III) oxide, containing less than 0,003 % sulfur.

5.4 Metallic tin, particle size 0,2 mm to 1,2 mm, containing less than 0,001 % sulfur.

5.5 Metallic tungsten, particle size 0,2 mm to 1,2 mm containing less than 0,001 % sulfur.

5.6 Sodium hydroxide coated silica, particle size 0,5 mm to 2 mm.

5.7 Sodium hydroxide, particle size 0,5 mm to 2 mm.

5.8 Standard sulfur solution, prepared as follows.

Dry 8 g of potassium sulfate [purity > 99,99 % (mass fraction)] to constant mass at 105 °C to 110 °C and cool in a desiccator. Weigh the dried masses of potassium sulfate specified in [Table 1](#) and dissolve each portion in water. Cool, transfer each portion to separate volumetric flasks and dilute to volume with water.

Table 1 — Sulfur standard solution (calibration series)

Solution no.	Mass of potassium sulfate g	Concentration of sulfur mg/ml
1	0,543 5	1,00
2	1,087 0	2,00
3	1,902 2	3,50
4	2,717 4	5,00

6 Apparatus

Ordinary laboratory apparatus, including one-mark pipettes and one-mark volumetric flasks complying with the specifications of ISO 648 and ISO 1042, respectively, as well as the following. See [Figure 1](#).

6.1 Oxygen supply.

6.2 Absorption tower, containing soda-asbestos ([5.6](#)) or sodium hydroxide ([5.7](#)).

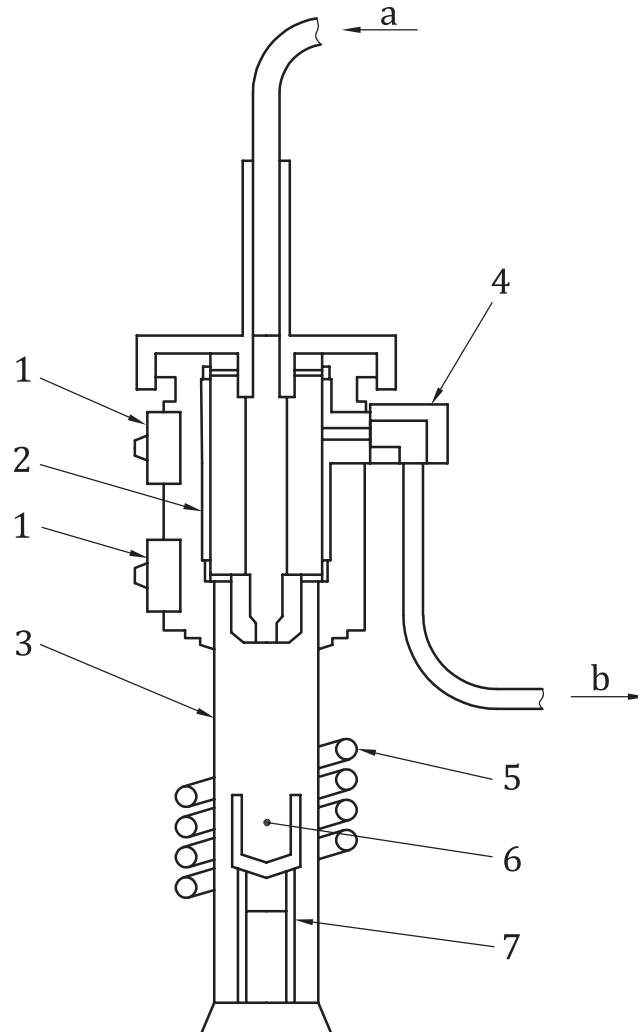
6.3 Drying tower, containing magnesium perchlorate ([5.2](#)).

6.4 High-frequency induction furnace, having a heating induction coil (height 30 mm to 55 mm, 4 to 5 rolls), capable of heating to a temperature of 1 200 °C.

An example of a combustion furnace, with combustion gas-refining section, is given in [Figure 1](#).

6.5 Combustion tube, quartz.

6.6 Refractory combustion crucible.



Key

- 1 metal filter
- 2 heating device
- 3 quartz combustion tube
- 4 dust trap
- 5 high-frequency induction coil
- 6 crucible
- 7 holder
- a Oxygen.
- b Combustion gas.

Figure 1 — Example of combustion furnace with combustion gas-refining section

6.7 Tin capsule.

The following dimensions may be used as guidelines.

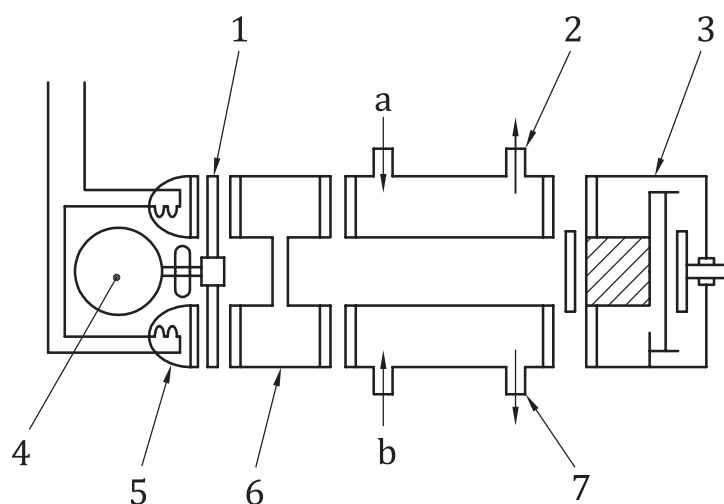
Combustion tube		Combustion crucible		Tin capsule	
Length	140 mm to 220 mm	Height	26 mm	Diameter	6 mm
Outer diameter	30 mm to 44 mm	Outer diameter	26 mm	Height	18 mm
Inner diameter	26 mm to 37 mm	Inner diameter	10 mm	Mass	0,3 g
				Volume	0,4 ml

6.8 Metal filter.

6.9 Dust trap, containing glass wool.

6.10 Detector for infrared absorption, an example of which is shown in [Figure 2](#).

6.11 Micro-pipette, capacity 100 µl, accurate to 1 µl.



Key

- 1 chopper
- 2 measuring cell
- 3 infrared detector
- 4 motor
- 5 infrared source
- 6 filter cell
- 7 reference cell
- a Combustion gas.
- b Oxygen.

Figure 2 — Example of an infrared detection system

7 Sampling and samples

7.1 Laboratory sample

For analysis, use a laboratory sample of $-100\ \mu\text{m}$ particle size which has been taken and prepared in accordance with ISO 3082. In the case of ores having significant contents of combined water or oxidizable compounds, use a particle size of $-160\ \mu\text{m}$.

NOTE A guideline on significant contents of combined water and oxidizable compounds is incorporated in ISO 7764.

7.2 Preparation of predried test samples

Thoroughly mix the laboratory sample and, taking multiple increments, extract a test sample in such a manner that it is representative of the entire contents of the container. Dry the test sample at $105\ \text{°C} \pm 2\ \text{°C}$ as specified in ISO 7764. This is the predried test sample.

For ores having significant content of combined water or oxidizable compounds, an air-equilibrated test sample shall be prepared in accordance with ISO 2596.

8 Procedure

8.1 Number of determinations

Carry out the analysis at least in duplicate in accordance with [Annex A](#), independently, on one predried test sample.

NOTE The expression “independently” means that the second and any subsequent result are not affected by the previous result(s). For this particular analytical method, this condition implies that the repetition of the procedure is carried out either by the same operator at a different time or by a different operator, including in either case, appropriate recalibration.

8.2 Test portion

Taking several increments, weigh to the nearest 0,000 2 g, approximately 0,5 g of the predried test sample obtained in accordance with [7.2](#). For samples containing in excess of 0,1 % (mass fraction), sulfur 0,2 g should be taken.

The test portion should be taken and weighed quickly to avoid re-absorption of moisture.

8.3 Blank test and check test

In each run, one blank test and one analysis of a certified reference material of the same type of ore shall be carried out in parallel with the analysis of the ore sample(s) under the same conditions. A predried test sample of the certified reference material shall be prepared as specified in [7.2](#).

The certified reference material should be of the same type as the sample to be analysed, and the properties of the two materials should be sufficiently similar to ensure that in either case, no significant changes in the analytical procedure will become necessary.

Where the analysis is carried out on several samples at the same time, the blank value may be represented by one test, provided that the procedure is the same and the reagents are from the same reagent bottles.

Where the analysis is carried out on several samples of the same type of ore at the same time, the analytical value of one certified reference material may be used.

8.4 Determination

Connect the furnace (6.4) with components (6.1, 6.2, 6.3, 6.5, 6.8, 6.9, and 6.10) and switch on the power. Set the condition for heating in accordance with the manufacturer's instructions after stabilization of the apparatus.

Analyse a standardization sample as follows.

- a) Adjust the reading of the detector to the sulfur content of the standardization sample. Place the test portion in a refractory combustion crucible (6.6) and cover the test portion with 0,50 g of iron (5.1), 0,3 g to 0,5 g of tin (5.4), and 1,0 g of tungsten (5.5) in that order. For 0,2 g of sample, cover the test portion with 0,8 g of iron, 0,3 g to 0,5 g of tin, and 1,0 g of tungsten in that order.
- b) Insert the crucible into a quartz combustion tube (6.5) of the furnace at the centre position of the heating induction coil. Substitute oxygen for air in the combustion tube, adjust the inner pressure to the specified pressure and load the power to the heating induction coil. Continue combustion of the test portion until the reading of the detector does not vary. Read out and record the indicated value. Switch off the power and take out the crucible.
- c) After combustion, the used crucible shall be checked to determine whether the combustion is complete or not.
- d) If incomplete, the test shall be carried out again.

A standardization sample means a sample used for adjusting the sensitivity of a detector. It should not easily degenerate and should be homogeneous.

NOTE An apparatus equipped with a timer stops automatically.

8.5 Preparation of calibration graph

Decant water and sulfur standard solution (5.8), in accordance with Table 2, into five tin capsules (6.7). Heat each capsule gently at 90 °C, to dryness, and cool in a desiccator.

Place the dried capsule in a refractory combustion crucible (6.6) and press the capsule against the bottom of the crucible. Cover the capsule with 0,5 g of iron oxide (5.3), 0,5 g of iron (5.1), and 1,0 g of tungsten (5.5) in that order.

Treat each crucible as described in 8.4. Plot the relationship between the quantity of sulfur, in micrograms, and the net reading.

Several CRMs may be used instead of sulfur standard solutions. In this case, the sulfur contents of the CRMs should cover the applicable range of this method. CRMs should be treated as indicated in 8.3 and 8.4.

Table 2 — Aliquot of sulfur standard solution

No. of sulfur standard solution	Volume of aliquot μl	Mass of sulfur in aliquot mg
(Water)	100	0
1	100	0,100
2	100	0,200
3	100	0,350
4	100	0,500

9 Expression of results

9.1 Calculation of sulfur content

The sulfur content, w_s , is calculated as a percentage by mass, to five decimal places for contents higher than 0,01 % and to six decimal places for contents lower than 0,01 %, using [Formula 1](#).

$$w_s (\%) = \frac{m_1 - m_2}{m \times 10^4} \quad (1)$$

where

m_1 is the mass, in micrograms, of sulfur in the test portion;

m_2 is the mass, in micrograms, of sulfur in the blank test;

m is the mass, in grams, of the test portion.

9.2 General treatment of results

9.2.1 Repeatability and permissible tolerance

The precision of this analytical method is expressed by the following formulae:

NOTE Additional information is given in [Annexes B](#) and [C](#).

$$R_d = 0,030\ 6\ X + 0,000\ 66 \quad (2)$$

$$P = 0,137\ 977\ X^{0,781\ 21} \quad (3)$$

$$\sigma_d = 0,010\ 8\ X + 0,000\ 23 \quad (4)$$

$$\sigma_L = 0,048\ 827\ X^{0,791\ 96} \quad (5)$$

where

R_d is the independent duplicate limit;

P is the permissible tolerance between laboratories;

σ_d is the independent duplicate standard deviation;

σ_L is the between-laboratories standard deviation;

X is the sulfur content, expressed as a percentage by mass, of the predried test sample calculated as follows:

- within-laboratory [[Formulae \(2\)](#) and [\(4\)](#)]: the arithmetic mean of the duplicate values;
- between-laboratories [[Formulae \(3\)](#) and [\(5\)](#)]: the arithmetic mean of the final results ([9.2.5](#)) of the two laboratories.

9.2.2 Determination of analytical result

Having computed the independent duplicate results according to [Formula \(1\)](#), compare them with the independent duplicate limit, R_d , using the procedure given in [Annex A](#).

9.2.3 Between-laboratories precision

Between-laboratories precision is used to determine the agreement between the final results reported by two laboratories. The assumption is that both laboratories followed the same procedure described in 9.2.2.

Compute the following quantity:

$$\mu_{1,2} = \frac{\mu_1 + \mu_2}{2} \quad (6)$$

where

μ_1 is the final result reported by laboratory 1;

μ_2 is the final result reported by laboratory 2;

$\mu_{1,2}$ is the mean of the final results.

If $|\mu_1 - \mu_2| \leq P$, the results are in agreement.

9.2.4 Check for trueness

The trueness of the analytical method shall be checked by applying it to a certified reference material (CRM) or a reference material (RM). The procedure is the same as that described above. After confirmation of the precision, the final laboratory result is compared with the reference or certified value, A_c . There are two possibilities:

- a) $|\mu_c - A_c| \leq C$, in which case, the difference between the reported result and the reference/certified value is statistically insignificant.
- b) $|\mu_c - A_c| > C$, in which case, the difference between the reported result and the reference/certified value is statistically significant.

where

μ_c is the final result for the certified reference material;

A_c is the reference/certified value for the CRM/RM;

C is a value dependent on the type of CRM/RM used.

Certified reference materials used for this purpose should be prepared and certified in accordance with ISO Guide 35.

C should be calculated as follows:

$$C = 2 \sqrt{\frac{s_{Lc}^2 + \frac{s_{Wc}^2}{n_{Wc}}}{N_c} + \sigma_L^2 + \frac{\sigma_d^2}{n}} \quad (7)$$

where

- s_{Lc} is the between-laboratories standard deviation of the certifying laboratories;
- s_{Wc} is the within-laboratory standard deviation of the certifying laboratories;
- n_{Wc} is the average number of replicate determinations in the certifying laboratories;
- N_c is the number of certifying laboratories;
- n is the number of replicate determinations carried out on the CRM/RM;
- σ_L and σ_d are as defined in [9.2.1](#).

The following procedure should be used when the information on the reference material certificate is incomplete:

- if there are sufficient data to enable the between-laboratories standard deviation to be estimated, delete the expression s_{Wc}^2 / n_{Wc} and regard s_{Lc} as the standard deviation of the laboratory means;
- if the certification has been made by only one laboratory or if the interlaboratory results are missing, use the following condition:

$$C = 2 \sqrt{2 \sigma_L^2 + \frac{\sigma_d^2}{n}} \quad (8)$$

A CRM certified by only one laboratory should be avoided unless it is known to have an unbiased certified value.

9.2.5 Calculation of final result

The final result is the arithmetic mean of the acceptable analytical values for the test sample, or as otherwise determined by the operations specified in [Annex A](#), calculated to five decimal places for contents of sulfur higher than 0,01 % (mass fraction) and to six decimal places for contents lower than 0,01 % (mass fraction). For contents higher than 0,01 % (mass fraction), the value is rounded off to the third decimal place as specified in a), b), and c). In a similar manner, with the ordinal numbers increased by one, the value for sulfur contents lower than 0,01 % (mass fraction) is rounded off to the fourth decimal place.

- a) Where the figure in the fourth decimal place is less than five, it is discarded and the figure in the third decimal place is kept unchanged.
- b) Where the figure in the fourth decimal place is five and there is a figure other than 0 in the fifth decimal place, or if the figure in the fourth decimal place is greater than five, the figure in the third decimal place is increased by one.
- c) Where the figure in the fourth decimal place is five and the figure 0 is in the fifth decimal place, the five is discarded and the figure in the third decimal place is kept unchanged if it is 0, 2, 4, 6, or 8, and is increased by one if it is 1, 3, 5, 7, or 9.

10 Test report

The test report shall include the following information:

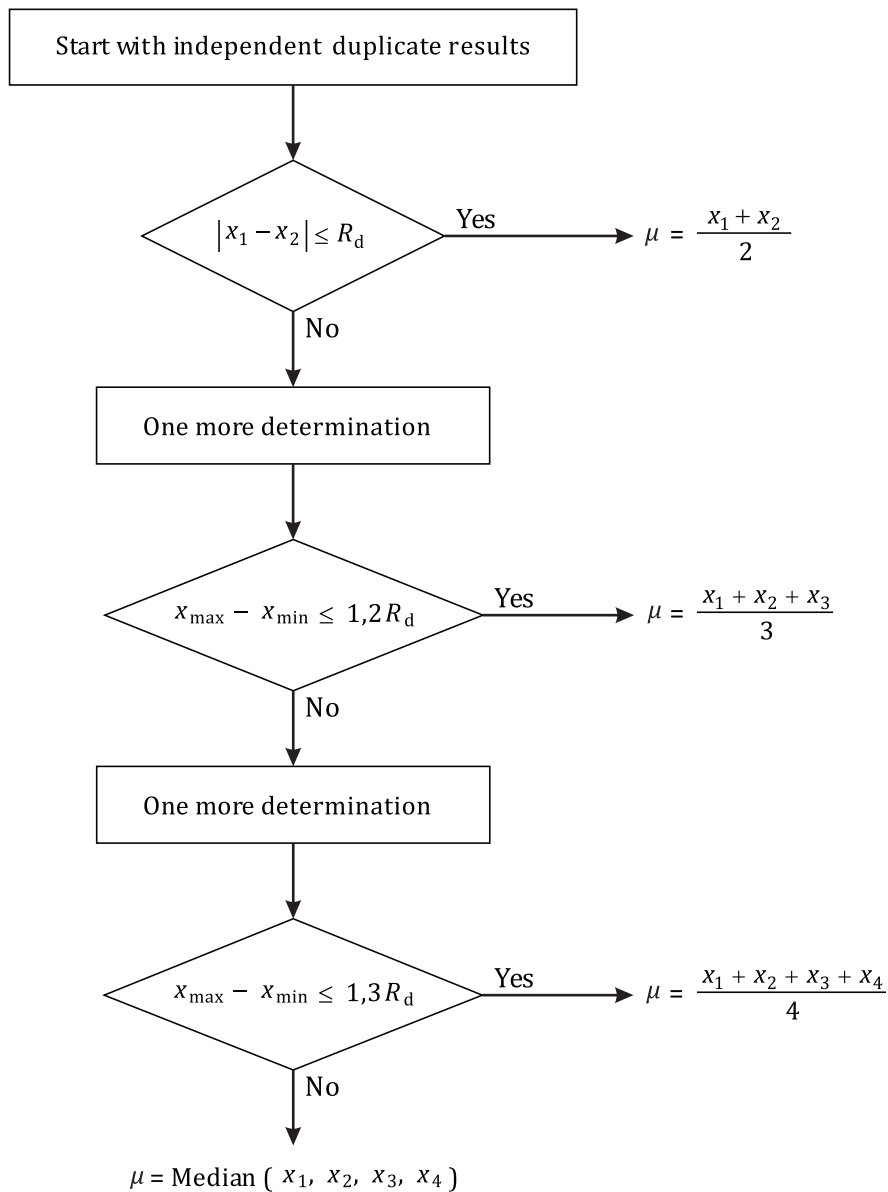
- a) name and address of the testing laboratory;
- b) date of issue of the test report;
- c) reference to this document, i.e. ISO 4689-3;

- d) details necessary for the identification of the sample;
- e) result of the analysis;
- f) reference number of the result;
- g) any characteristics noticed during the determination and any operations not specified in this document, which may have had an influence on the result, either for the test sample or for the certified reference material(s).

Annex A (normative)

Flowsheet of the procedure for the acceptance of analytical values for test samples

Figure A.1 shows the procedure for the acceptance of analytical values for test samples.



NOTE R_d is as defined in 9.2.1.

Figure A.1 — Flowsheet of the procedure for the acceptance of analytical values for test samples

Annex B (informative)

Derivation of repeatability and permissible tolerance equations

The regression formulae in [9.2.1](#) were derived from the results of international analytical trials carried out in 1999/2000 on seven iron ore samples, involving six laboratories in four countries.

Graphical treatment of the precision data is given in [Annex C](#).

The test samples used are listed in [Table B.1](#).

NOTE 1 Reports of the international trial and a statistical analysis of the results (Documents ISO/TC 102/SC 2 N1419 and N1422, September 2000) are available from the Secretariat of ISO/TC 102/SC 2.

NOTE 2 The statistical analysis was performed in accordance with the principles embodied in ISO 5725-2.

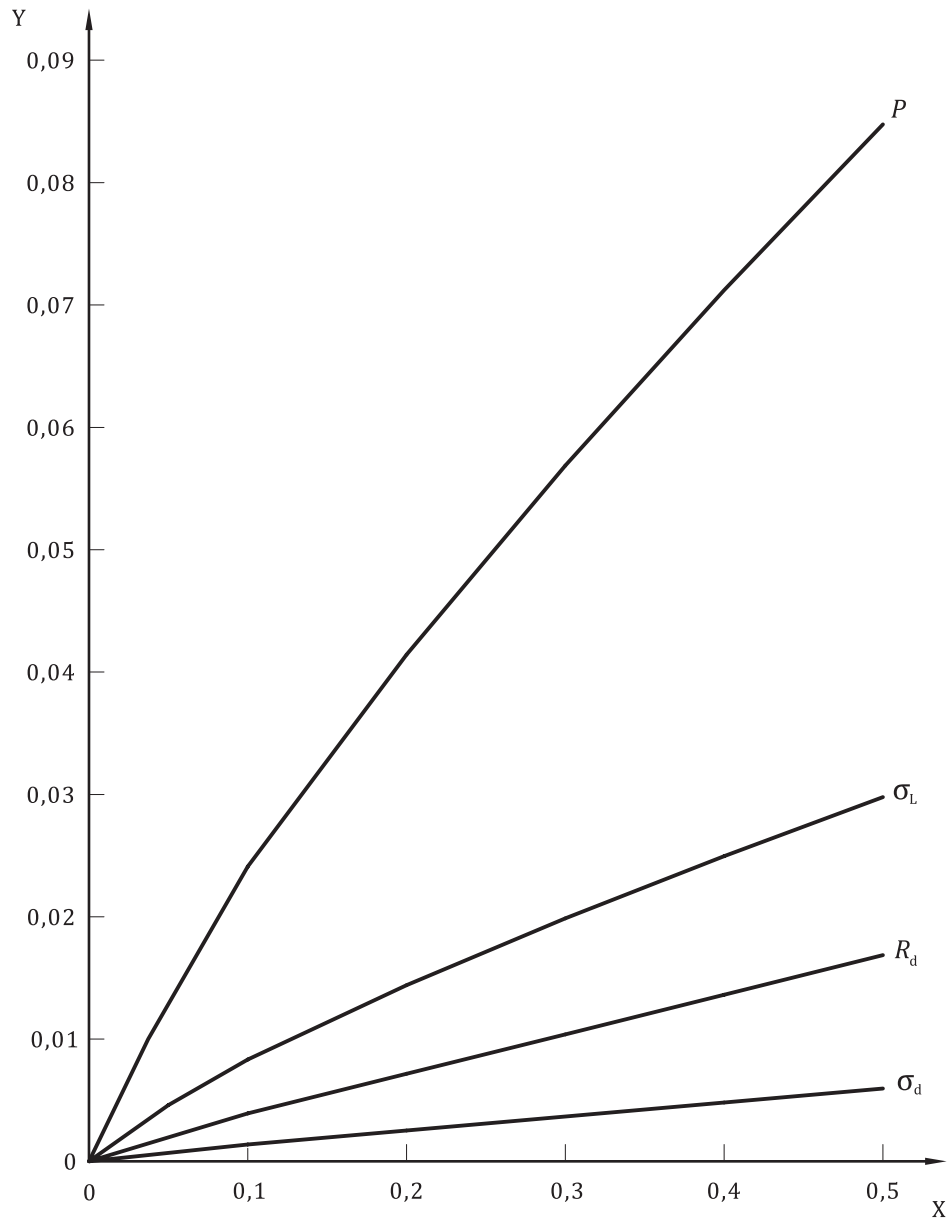
Table B.1 — Sulfur contents of test samples

Sample	Sulfur content % (mass fraction)
WG 4-5	0,004 50
WG 4-3	0,005 79
WG 4-4	0,011 8
WG 4-1	0,208
WG 4-2	0,032 7
WG 4-6	0,110
WG 4-7	0,527

Annex C (informative)

Precision data obtained by international analytical trial

[Figure C.1](#) is a graphical presentation of the formulae in [9.2.1](#).



Key

- X sulfur content, % mass fraction
- Y precision, %

Figure C.1 — Least-squares fit of precision against X for sulfur

Bibliography

- [1] ISO 385, *Laboratory glassware — Burettes*
- [2] ISO 5725-2, *Accuracy (trueness and precision) of measurement methods and results — Part 2: Basic method for the determination of repeatability and reproducibility of a standard measurement method*

British Standards Institution (BSI)

BSI is the national body responsible for preparing British Standards and other standards-related publications, information and services.

BSI is incorporated by Royal Charter. British Standards and other standardization products are published by BSI Standards Limited.

About us

We bring together business, industry, government, consumers, innovators and others to shape their combined experience and expertise into standards-based solutions.

The knowledge embodied in our standards has been carefully assembled in a dependable format and refined through our open consultation process. Organizations of all sizes and across all sectors choose standards to help them achieve their goals.

Information on standards

We can provide you with the knowledge that your organization needs to succeed. Find out more about British Standards by visiting our website at bsigroup.com/standards or contacting our Customer Services team or Knowledge Centre.

Buying standards

You can buy and download PDF versions of BSI publications, including British and adopted European and international standards, through our website at bsigroup.com/shop, where hard copies can also be purchased.

If you need international and foreign standards from other Standards Development Organizations, hard copies can be ordered from our Customer Services team.

Copyright in BSI publications

All the content in BSI publications, including British Standards, is the property of and copyrighted by BSI or some person or entity that owns copyright in the information used (such as the international standardization bodies) and has formally licensed such information to BSI for commercial publication and use.

Save for the provisions below, you may not transfer, share or disseminate any portion of the standard to any other person. You may not adapt, distribute, commercially exploit, or publicly display the standard or any portion thereof in any manner whatsoever without BSI's prior written consent.

Storing and using standards

Standards purchased in soft copy format:

- A British Standard purchased in soft copy format is licensed to a sole named user for personal or internal company use only.
- The standard may be stored on more than 1 device provided that it is accessible by the sole named user only and that only 1 copy is accessed at any one time.
- A single paper copy may be printed for personal or internal company use only.

Standards purchased in hard copy format:

- A British Standard purchased in hard copy format is for personal or internal company use only.
- It may not be further reproduced – in any format – to create an additional copy. This includes scanning of the document.

If you need more than 1 copy of the document, or if you wish to share the document on an internal network, you can save money by choosing a subscription product (see 'Subscriptions').

Reproducing extracts

For permission to reproduce content from BSI publications contact the BSI Copyright & Licensing team.

Subscriptions

Our range of subscription services are designed to make using standards easier for you. For further information on our subscription products go to bsigroup.com/subscriptions.

With **British Standards Online (BSOL)** you'll have instant access to over 55,000 British and adopted European and international standards from your desktop. It's available 24/7 and is refreshed daily so you'll always be up to date.

You can keep in touch with standards developments and receive substantial discounts on the purchase price of standards, both in single copy and subscription format, by becoming a **BSI Subscribing Member**.

PLUS is an updating service exclusive to BSI Subscribing Members. You will automatically receive the latest hard copy of your standards when they're revised or replaced.

To find out more about becoming a BSI Subscribing Member and the benefits of membership, please visit bsigroup.com/shop.

With a **Multi-User Network Licence (MUNL)** you are able to host standards publications on your intranet. Licences can cover as few or as many users as you wish. With updates supplied as soon as they're available, you can be sure your documentation is current. For further information, email subscriptions@bsigroup.com.

Revisions

Our British Standards and other publications are updated by amendment or revision.

We continually improve the quality of our products and services to benefit your business. If you find an inaccuracy or ambiguity within a British Standard or other BSI publication please inform the Knowledge Centre.

Useful Contacts

Customer Services

Tel: +44 345 086 9001

Email (orders): orders@bsigroup.com

Email (enquiries): cservices@bsigroup.com

Subscriptions

Tel: +44 345 086 9001

Email: subscriptions@bsigroup.com

Knowledge Centre

Tel: +44 20 8996 7004

Email: knowledgecentre@bsigroup.com

Copyright & Licensing

Tel: +44 20 8996 7070

Email: copyright@bsigroup.com

BSI Group Headquarters

389 Chiswick High Road London W4 4AL UK