

BS ISO 4250-3:2011



BSI Standards Publication

Earth-mover tyres and rims

Part 3: Rims

bsi.

...making excellence a habit.™

National foreword

This British Standard is the UK implementation of ISO 4250-3:2011. It supersedes BS ISO 4250-3:2006 which is withdrawn.

The UK participation in its preparation was entrusted to Technical Committee AUE/4, Tyres and wheels for motor vehicles.

A list of organizations represented on this committee can be obtained on request to its secretary.

This publication does not purport to include all the necessary provisions of a contract. Users are responsible for its correct application.

© BSI 2011

ISBN 978 0 580 68399 2

ICS 53.100; 83.160.99

Compliance with a British Standard cannot confer immunity from legal obligations.

This British Standard was published under the authority of the Standards Policy and Strategy Committee on 31 May 2011.

Amendments issued since publication

Date	Text affected
------	---------------

INTERNATIONAL STANDARD

BS ISO 4250-3:2011

ISO
4250-3

Fourth edition
2011-05-01

Earth-mover tyres and rims —

Part 3: Rims

*Pneumatiques et jantes pour engins de terrassement —
Partie 3: Jantes*



Reference number
ISO 4250-3:2011(E)

© ISO 2011



COPYRIGHT PROTECTED DOCUMENT

© ISO 2011

All rights reserved. Unless otherwise specified, no part of this publication may be reproduced or utilized in any form or by any means, electronic or mechanical, including photocopying and microfilm, without permission in writing from either ISO at the address below or ISO's member body in the country of the requester.

ISO copyright office
Case postale 56 • CH-1211 Geneva 20
Tel. + 41 22 749 01 11
Fax + 41 22 749 09 47
E-mail copyright@iso.org
Web www.iso.org

Published in Switzerland

Contents

Page

Foreword	iv
Introduction.....	v
1 Scope	1
2 Normative references	1
3 Terms and definitions	1
4 Rim identification	1
5 Rim contours	2
6 Rim knurling.....	2
7 Rim loads and inflation pressures.....	2
8 Rim dimensions.....	2
Annex A (informative) Sealing ring grooves and O-rings for earth-mover rims	11
Bibliography.....	13

Foreword

ISO (the International Organization for Standardization) is a worldwide federation of national standards bodies (ISO member bodies). The work of preparing International Standards is normally carried out through ISO technical committees. Each member body interested in a subject for which a technical committee has been established has the right to be represented on that committee. International organizations, governmental and non-governmental, in liaison with ISO, also take part in the work. ISO collaborates closely with the International Electrotechnical Commission (IEC) on all matters of electrotechnical standardization.

International Standards are drafted in accordance with the rules given in the ISO/IEC Directives, Part 2.

The main task of technical committees is to prepare International Standards. Draft International Standards adopted by the technical committees are circulated to the member bodies for voting. Publication as an International Standard requires approval by at least 75 % of the member bodies casting a vote.

Attention is drawn to the possibility that some of the elements of this document may be the subject of patent rights. ISO shall not be held responsible for identifying any or all such patent rights.

ISO 4250-3 was prepared by Technical Committee ISO/TC 31, *Tyres, rims and valves*, Subcommittee SC 6, *Off-the-road tyres and rims*.

This fourth edition cancels and replaces the third edition (ISO 4250-3:2006), which has been technically revised.

ISO 4250 consists of the following parts, under the general title *Earth-mover tyres and rims*:

- *Part 1: Tyre designation and dimensions*
- *Part 2: Loads and inflation pressures*
- *Part 3: Rims*

Introduction

ISO 4250 consists of three parts (ISO 4250-1, ISO 4250-2 and this part of ISO 4250) that lay down the technical elements relating to designation and dimensions of tyres and rims for earth-moving machinery. It also provides load tables for these tyres.

Earth-mover tyres and rims —

Part 3: Rims

1 Scope

This part of ISO 4250 sets out the designation, contours and dimensions for rims for narrow- and wide-base off-road tyres primarily intended for earth-moving machinery.

All dimensions in this part of ISO 4250 are given in millimetres and are applicable to the side of the rim which is in contact with the tyre.

Tyre designations and dimensions, tyre classifications and nomenclature are given in ISO 4250-1, ISO 10571 and ISO 13442.

Annex A gives details on sealing ring grooves and O-rings for earth-mover rims.

2 Normative references

The following referenced documents are indispensable for the application of this document. For dated references, only the edition cited applies. For undated references, the latest edition of the referenced document (including any amendments) applies.

ISO 3911, *Wheels and rims for pneumatic tyres — Vocabulary, designation and marking*

3 Terms and definitions

For the purposes of this document, the terms and definitions given in ISO 3911 apply.

4 Rim identification

4.1 Codes shall be used to identify:

- a) specified rim diameter, D (see Table 7);
- b) nominal width between flanges;
- c) nominal flange height or rim profile designations.

4.2 The rim marking shall consist of codes for:

- a) specified rim diameter, D ;
- b) nominal width between flanges.

The markings shall be on the weather side of the rim and visible when the tyre is mounted on the rim.

Where a disk is fitted by the rim/wheel manufacturer, the marking shall appear on either the disc or the rim base.

Loose flanges shall be marked on an externally visible surface. The marking shall indicate nominal height and nominal diameter.

5 Rim contours

Rim contours are given in Figures 1 to 5 and Tables 1 to 5.

6 Rim knurling

If rim knurling is required, details can be found in Figure 6 and Table 6.

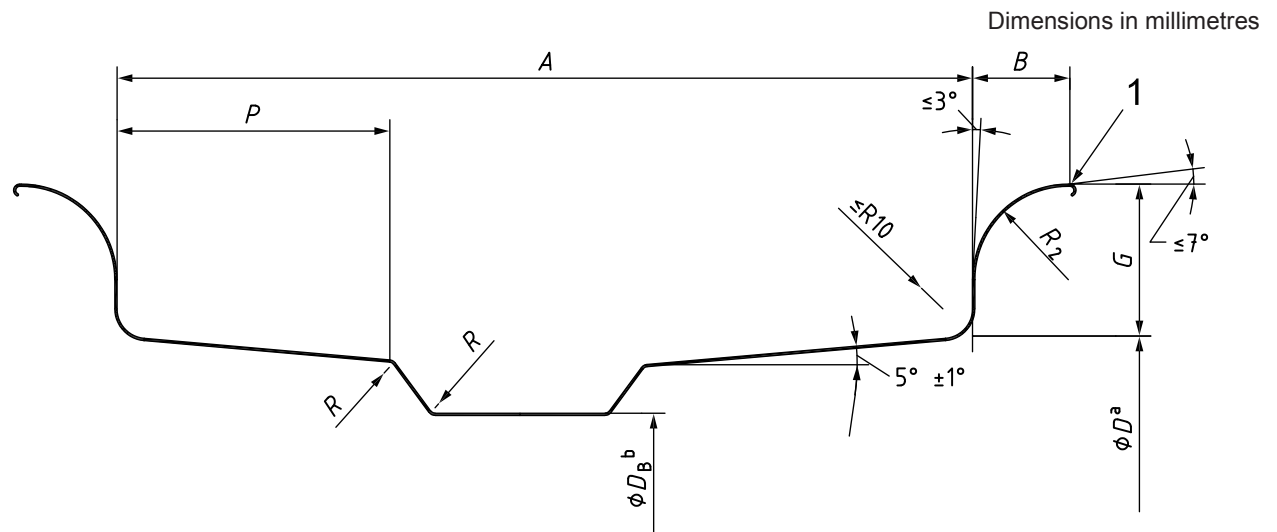
7 Rim loads and inflation pressures

The load and inflation pressure imposed on the rim and wheel shall not exceed the rim and wheel manufacturer's recommendations, even though the tyre may be approved for a higher load or inflation pressure. Consult the rim and wheel manufacturer to determine if rim and wheel capacities are adequate for the intended service.

8 Rim dimensions

Rim dimensions are standardized for size and contour, and for particular tyre and rim combinations designed to ensure proper mounting and fit of the tyre to the rim.

Where rim dimensions are not available, consult the rim, wheel or tyre manufacturer.



Key

1 break corner equivalent to R1 min.

Flange and bead seat shall be removable on one side.

All flange and bead seat dimensions apply to both sides of the rim contour.

NOTE This figure applies to rim diameter codes 24, 25, 29, 33, 35, 39, 45, 49, 51, 57 and 63. (See Table 7 for specific rim diameters.)

- ^a For rim diameter codes < 49, D tolerance: $\begin{matrix} +0,4 \\ -0,8 \end{matrix}$.
 For rim diameter codes ≥ 49 , D tolerance: $\pm 0,8$.

The tolerance given for the specified rim diameter, D , is for tyre design purposes only. The actual rim measurement by circumference is established by using a mandrel and a tape.

- ^b For rim diameter codes ≤ 49 , $D_B = (D - 25,5) \begin{matrix} + 0,5 \\ - 13,0 \end{matrix}$.
 For rim diameter codes 51 and 57, $D_B = (D - 51,0) \begin{matrix} + 0,5 \\ - 13,0 \end{matrix}$.
 For rim diameter code 63, $D_B = (D - 63,5) \pm 13,0$.

Figure 1 — Contours of 5° full tapered bead seat rims

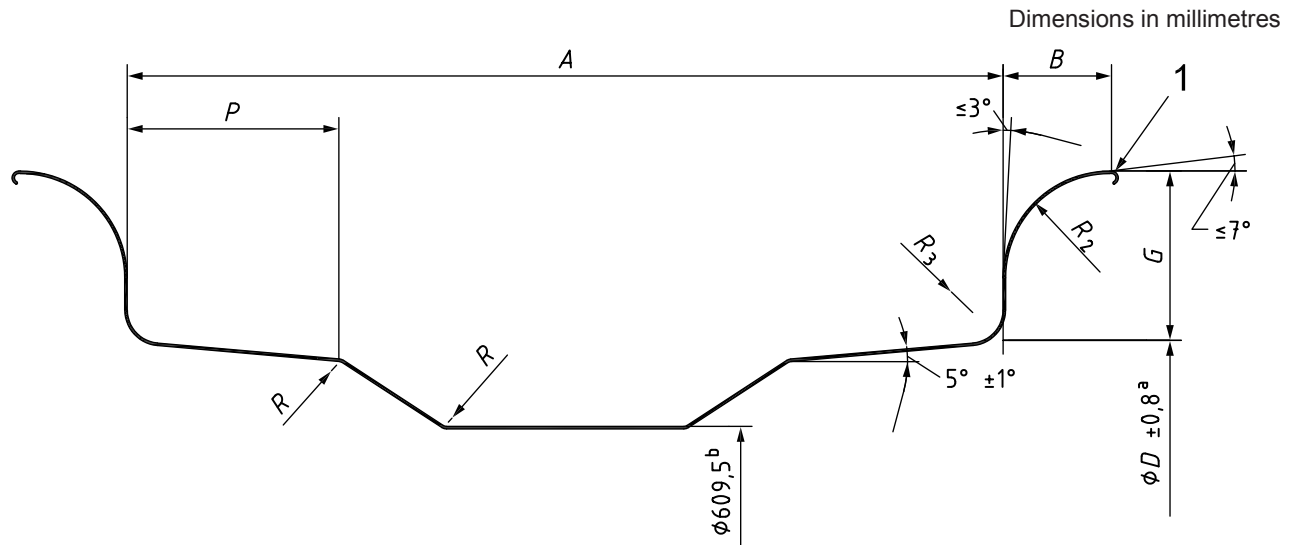
Table 1 — Contours of 5° full tapered bead seat rims

Dimensions in millimetres

Rim width code/ flange height code ^a	<i>A</i>	<i>G</i>	<i>B</i>	<i>P</i>	<i>R</i> ₂	
	±13,0	±2,0	min.	min.		tol.
11.25/2.0	286,0	51,0	32,5	101,0	32,0	±1,5
13.00/2.5	330,0	63,5	45,5	101,0	38,0	±1,5
13.00/2.75	330,0	70,0	48,5	101,0	47,5	±1,5
14.00/1.5	355,5	38,1	24,5	51,0	25,0	±1,5
15.00/3.0	381,0	76,0	55,0	117,5	44,5	±1,5
15.00/3.0 ^b	381,0	76,0	55,0	117,5	51,0	±2,0
17.00/2.0	432,0	51,0	32,5	101,0	32,0	±1,5
17.00/3.5	432,0	89,0	58,0	139,0	51,0	±2,0
19.50/2.0	495,5	51,0	32,5	101,0	32,0	±1,5
19.50/2.5	495,5	63,5	45,5	101,0	38,0	±1,5
19.50/4.0	495,5	101,5	66,0	139,0	57,0	±2,0
20.00/2.0	508,0	51,0	32,5	101,0	32,0	±1,5
22.00/3.0	559,0	76,0	55,0	139,0	44,5	±1,5
22.00/3.5	559,0	89,0	76,0	139,0	51,0	±2,0
22.00/4.0	559,0	101,5	66,0	139,0	57,0	±2,0
22.00/4.5	559,0	114,5	74,0	190,5	63,5	±2,0
24.00/3.0	609,5	76,0	55,0	139,0	44,5	±1,5
24.00/3.5	609,5	89,0	58,0	139,0	51,0	±2,0
24.00/5.0	609,5	127,0	86,5	190,5	70,0	±2,0
25.00/3.5	635,0	89,0	58,0	139,0	51,0	±2,0
26.00/3.5	660,5	89,0	58,0	139,0	51,0	±2,0
26.00/5.0	660,5	127,0	86,5	190,5	70,0	±2,0
27.00/3.5	686,0	89,0	58,0	139,0	51,0	±2,0
27.00/6.0	686,0	152,5	122,0	190,5	84,0	±2,5
28.00/3.5	711,0	89,0	58,0	139,0	51,0	±2,0
28.00/4.0	711,0	101,5	66,0	139,0	57,0	±2,0
29.00/3.5	736,5	89,0	58,0	139,0	51,0	±2,0
29.00/6.0	736,5	152,5	122,0	190,5	84,0	±2,5
31.00/4.0	787,5	101,5	66,0	139,0	57,0	±2,0
32.00/4.0	813,0	101,5	66,0	139,0	57,0	±2,0
32.00/4.5	813,0	114,5	74,0	139,0	63,5	±2,0
32.00/6.0	813,0	152,5	122,0	139,0	84,0	±2,5
32.00/6.5	813,0	165,0	122,0	190,5	70,0	±2,0
34.00/5.0	863,5	127,0	86,5	190,5	70,0	±2,0
36.00/4.5	914,5	114,5	74,0	139,0	63,5	±2,0
36.00/5.0	914,5	127,0	86,5	190,5	70,0	±2,0
36.00/6.0	914,5	152,5	122,0	190,5	84,0	±2,5
38.00/5.0	965,0	127,0	139,5	190,5	70,0	±2,0
40.00/4.5	1 016,0	114,5	74,0	190,5	63,5	±2,0
44.00/5.0	1 117,5	127,0	139,5	190,5	70,0	±2,5
44.00/6.0	1 117,5	152,5	122,0	190,5	84,0	±2,5
41.00/5.0	1 041,5	127,0	127,0	190,5	70,0	±2,0
52.00/6.0	1 321,0	152,5	127,0	254,0	84,0	±2,5

^a The rim width code and flange height code are applicable to specific tyre sizes. See ISO 4250-1 for approved rim/tyre combinations.

^b For rim diameter code 49.



Key

1 break corner equivalent to R1 min.

Flange and bead seat shall be removable on one side.

All flange and bead seat dimensions apply to both sides of the rim contour.

NOTE This figure applies to rim diameter code 25. (See Table 7 for specified rim diameters.)

^a The tolerance given for the specified rim diameter, D , is for tyre design purposes only. The actual measurement by circumference is established by using a mandrel and a tape.

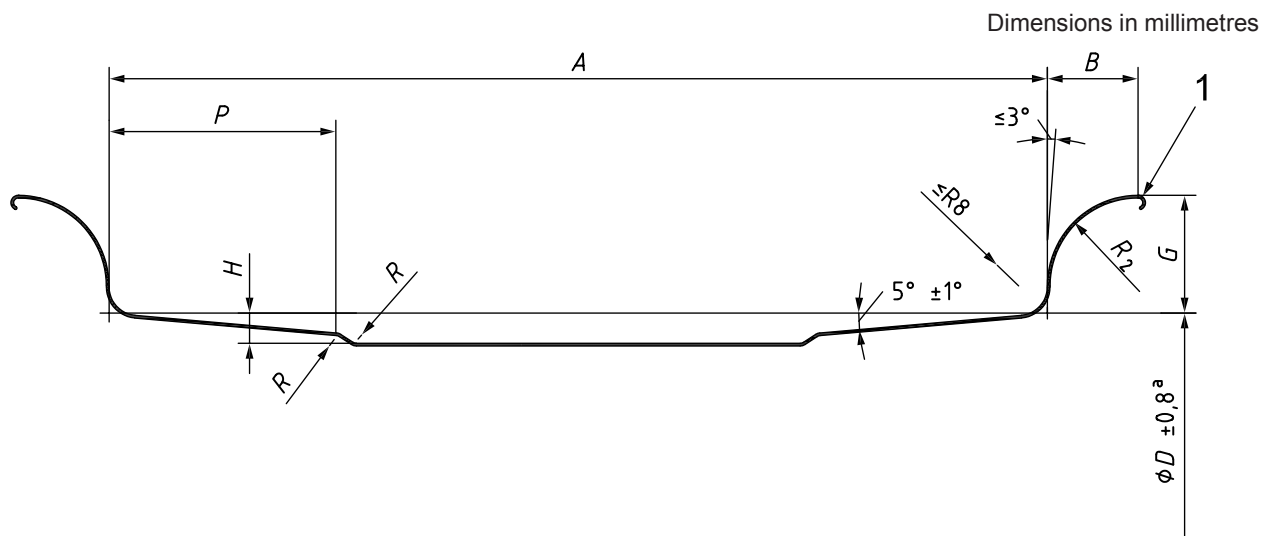
^b For rims 8.50/1.3 and 10.00/1.5, D tolerance: $\begin{matrix} +0,5 \\ -6,5 \end{matrix}$.
For larger rims, D tolerance: $\begin{matrix} +0,5 \\ -13,0 \end{matrix}$.

Figure 2 — Contours of 5° full tapered bead seat rims

Table 2 — Contours of 5° full tapered bead seat rims

Dimensions in millimetres

Rim width code/ flange height code	A		G		B	P	R_2	R_3
		tol.		tol.	min.	min.	±1,5	max.
8.50/1.3	216,0	±5,0	33,0	±1,5	25,5	50,0	23,0	8,0
10.00/1.5	254,0	±5,0	38,0	±1,5	28,0	59,0	25,5	8,0
12.00/1.3	305,0	±6,5	33,0	±1,5	25,5	47,0	23,0	10,0
14.00/1.5	355,5	±6,5	38,0	±1,5	28,0	59,0	25,5	10,0
17.00/1.7	432,0	±13,0	43,0	±2,0	25,5	60,0	23,0	8,0



Key

1 break corner equivalent to R1 min.

Flange and bead seat shall be removable on one side.

All flange and bead seat dimensions apply to both sides of the rim contour.

NOTE This figure applies to rim diameter codes 24 and 25. (See Table 7 for specified rim diameters.)

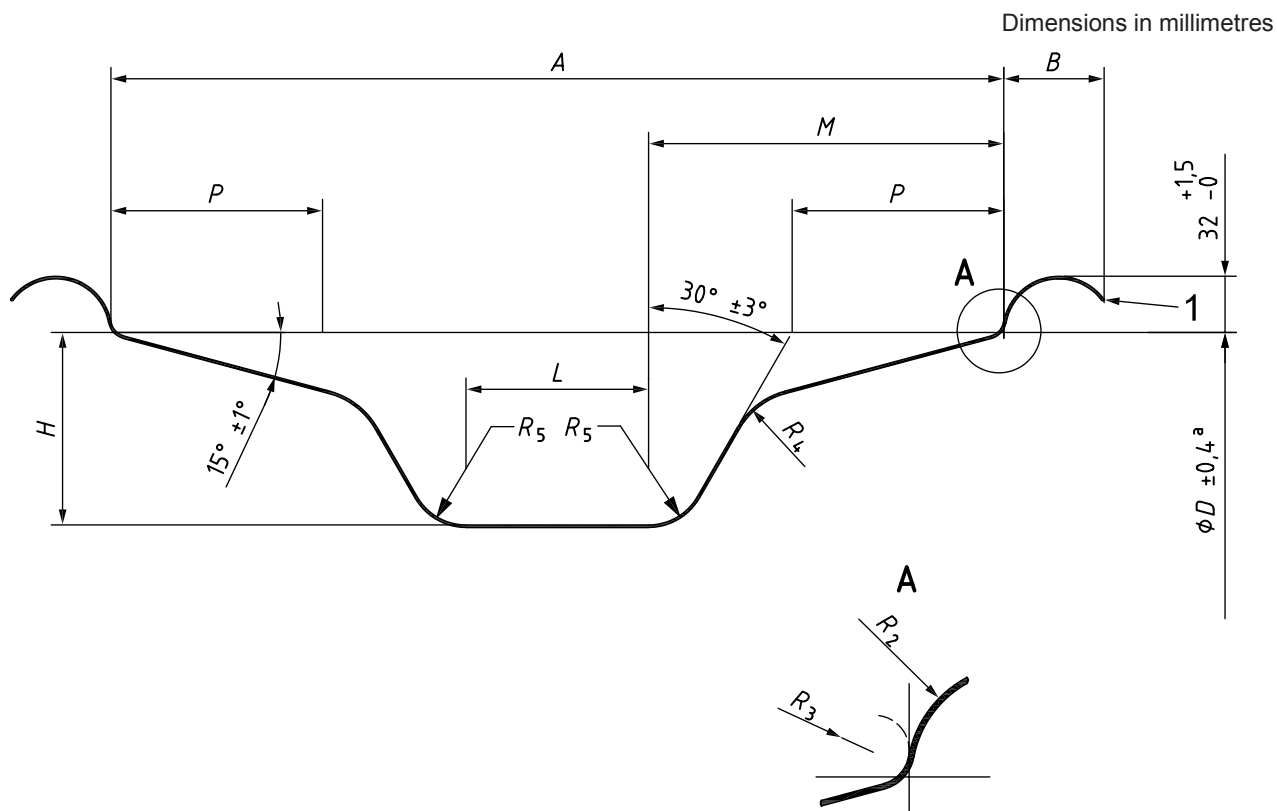
^a The tolerance given for the specified rim diameter, D , is for tyre design purposes only. The actual rim measurement by circumference is established using a mandrel and a tape.

Figure 3 — Contours of semi-drop-centre rims

Table 3 — Contours of semi-drop-centre rims

Dimensions in millimetres

Rim width code/ flange height code	A		G	B	P	H	R_2	Rim diameter code
		tol.	$\pm 1,5$	min.	min.	min.	$\pm 1,5$	
8.00 TG	203,0	$\pm 3,5$	35,5	17,5	47,0	6,5	16,5	24
10.00 VA	254,0	$\pm 5,0$	43,0	25,5	59,0	11,0	23,0	24
12.00/1.3	305,0	$\pm 6,5$	33,0	25,5	47,0	7,0	23,0	25
14.00/1.3	355,5	$\pm 6,5$	33,0	25,5	47,0	7,0	23,0	25



Key

1 break corner equivalent to R1 min.

NOTE This figure applies to rim diameter codes 56.5 and 59.5. (See Table 7 for specified rim diameters.)

^a The tolerance given for the specified rim diameter, D , is for tyre design purposes only. The actual rim measurement by circumference is established using a mandrel and a tape.

^b The tyre-mounting side is that side of the rim to which dimension M applies.

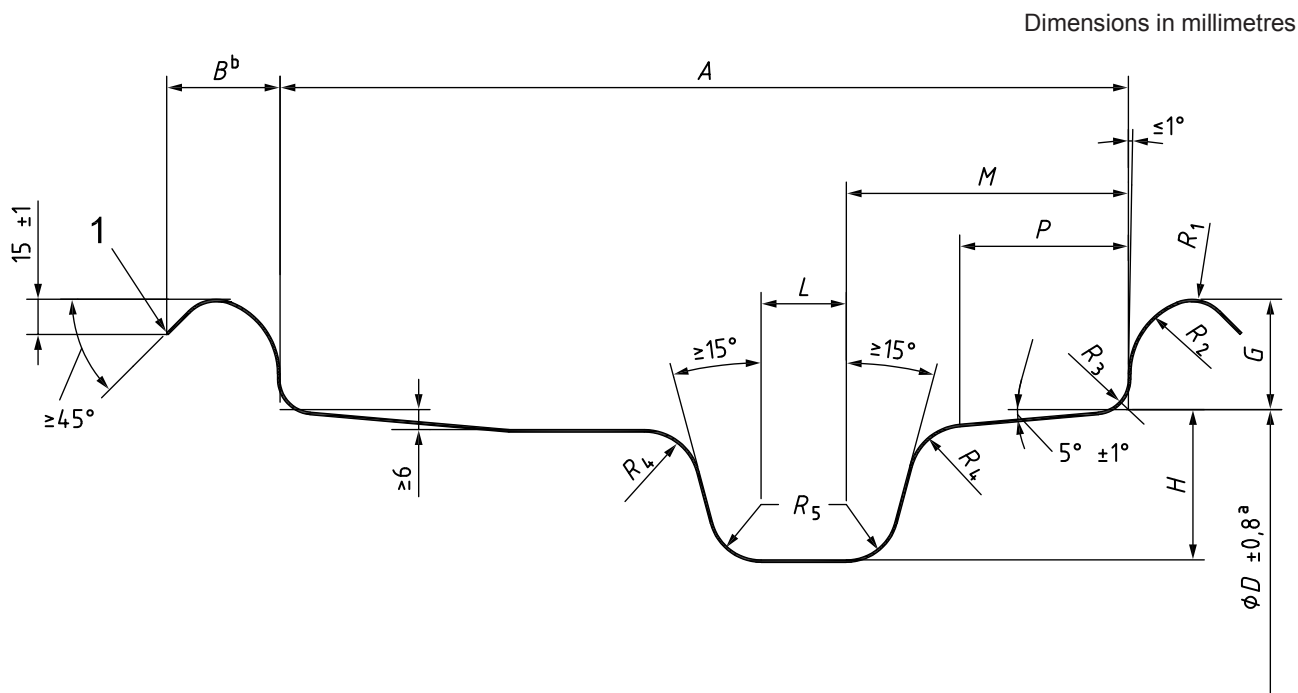
Figure 4 — Contours of 15° drop-centre rims

Table 4 — Contours of 15° drop-centre rims

Dimensions in millimetres

Rim width code	A	B	H^a	L^a	M^a	P	R_2	R_3	R_4	R_5^a
	±10,0	min.			max.	min.		max.	max.	
20.0	508,0	57,0	109,5	106,0	201,5	120,5	32,0	19,5	44,5	32,0
21.0	533,0	57,0	109,5	106,0	201,5	120,5	32,0	19,5	44,5	32,0
22.0	559,0	57,0	109,5	157,0	201,5	120,5	32,0	19,5	44,5	32,0
23.5	597,0	66,5	131,5	111,0	248,0	152,0	41,0	25,5	48,0	38,5
27.0	686,0	66,5	131,5	200,0	248,0	152,0	41,0	25,5	48,0	38,5

^a These dimensions comprise the minimum well envelope for tyre-mounting purposes.



Key

1 break corner equivalent to R1 min.

NOTE This figure applies to rim diameter codes 24 and 25. (See Table 7 for specified rim diameters.)

^a The tolerance given for the specified rim diameter, D , is for tyre design purposes only. The actual rim measurement by circumference is established by using a mandrel and a tape.

^b Flange width B includes an edge radius.

^c The tyre-mounting side is that side of the rim to which dimension M applies.

Figure 5 — Contours of 5° drop-centre rims

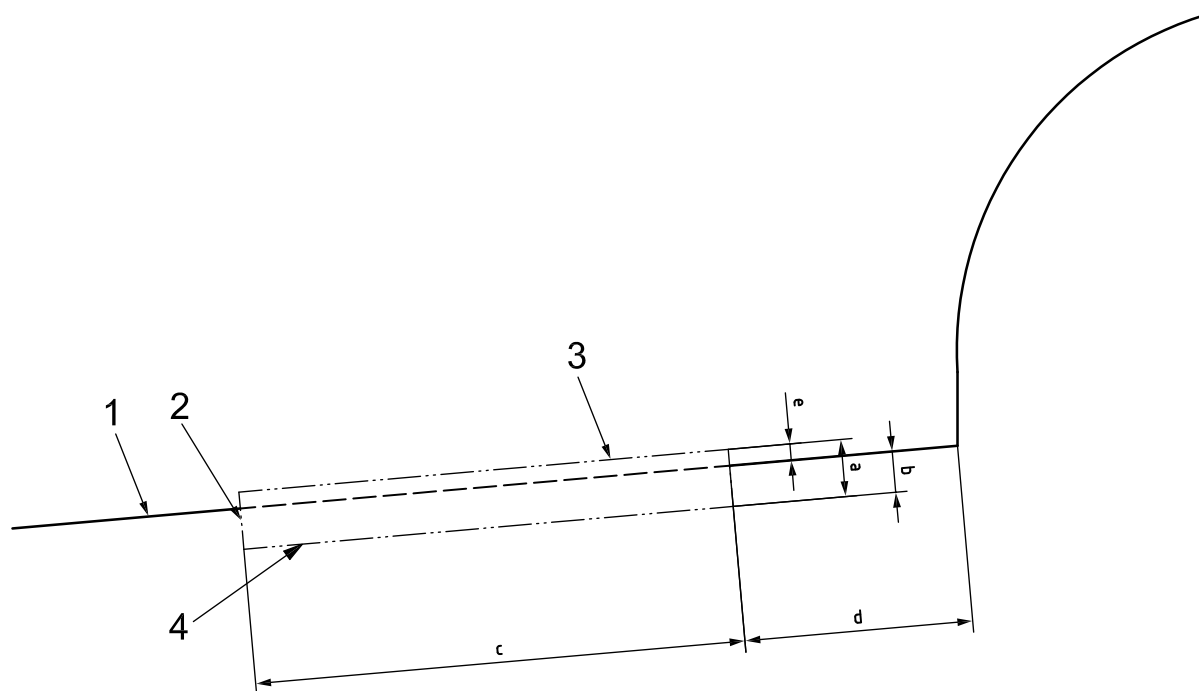
Table 5 — Contours of 5° drop-centre rims

Dimensions in millimetres

Rim width code/ flange height code	A		G	B		P	H^a	L^a	M^a	R_1	R_2	R_3	R_4	R_5^a	Rim diameter code
		tol.	$\pm 1,5$	min.	max.	min.	min.	min.	max.	$+3,0$ 0		max.	min.		
9.00/1.5	228,5	$\pm 5,0$	38,0	25,0	36,0	49,0	48,0	25,5	102,0	14,0	19,0	8,0	22,0	$\leq 24,0$	24
10.00/1.3	254,0	$\pm 6,0$	33,0	25,0	40,0	49,0	45,0	25,5	102,0	12,0	23,0	10,0	17,0	$\geq 15,0$	24
12.00/1.3	305,0	$\pm 6,5$	33,0	25,0	40,0	40,0	45,0	30,0	90,0	12,0	23,0	10,0	17,0	$\geq 15,0$	25
13.00/1.4	330,0	$\pm 6,5$	36,0	25,0	40,0	40,0	48,0	30,0	102,0	12,0	23,0	10,0	17,0	$\geq 15,0$	25
14.00/1.3	355,5	$\pm 6,5$	33,0	25,0	40,0	40,0	45,0	30,0	90,0	12,0	23,0	10,0	17,0	$\geq 15,0$	25
14.00/1.5	355,5	$\pm 6,5$	38,0	27,0	43,0	40,0	52,0	30,0	90,0	12,0	25,5	10,0	17,0	$\geq 15,0$	25

^a These dimensions comprise the minimum well envelope for tyre-mounting purposes.

Dimensions in millimetres



Key

- 1 base line
- 2 knurl envelope
- 3 crest
- 4 root

Pitch: $\geq 1,5$ to $\leq 5,0$

- a Height from crest to root: $\geq 0,5$ to $\leq 1,0$.
- b Depth.
- c Width.
- d Offset: $\geq 9,5$ to $\leq 16,0$.
- e Height from crest to base line: $\geq 0,2$.

Figure 6 — Knurling detail

Table 6 — Knurling widths

Dimensions in millimetres

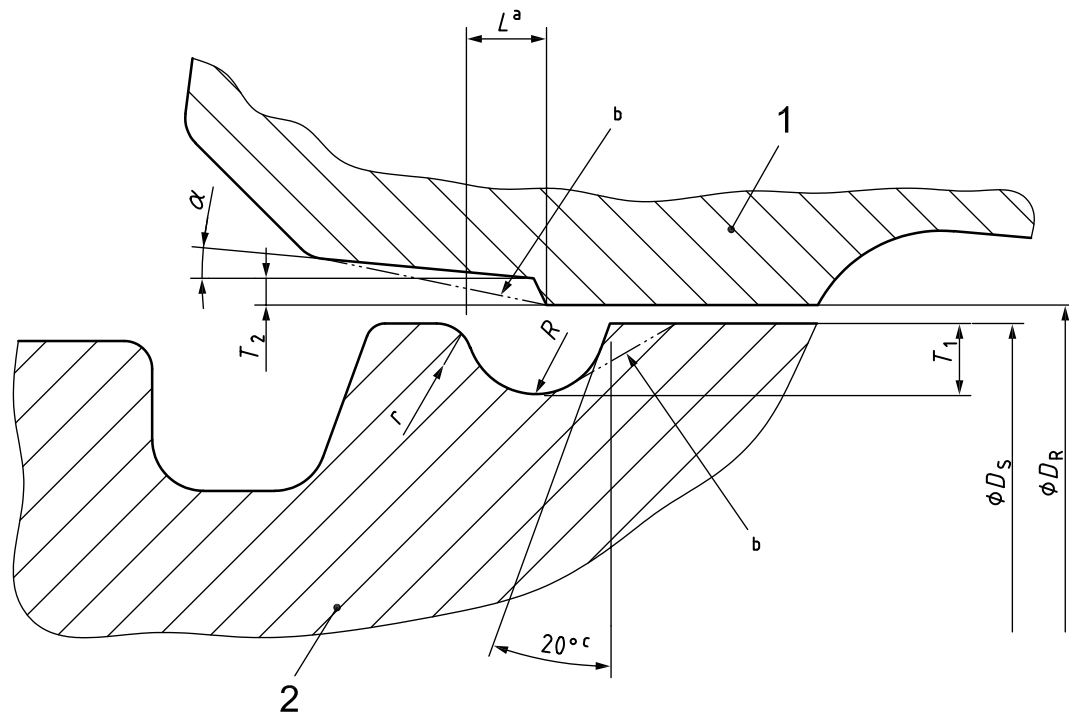
Rim width codes	Fixed flange side	Removable flange side
a) Rim diameter codes 25 to 49		
11.25 to 15.00	$\geq 25,0$	$\leq 51,0$ $\geq 38,0$
17.00 and above	$\leq 67,0$ $\geq 38,0$	$\leq 67,0$ $\geq 38,0$
b) Rim diameter codes 51 and larger		
22.00 and above	$\leq 67,0$ $\geq 53,5$	$\leq 67,0$ $\geq 53,5$

Table 7 — Earth-mover specified rim diameters

Rim diameter codes	Specified diameter <i>D</i> mm
24 TG	614,4
24 VA	614,4
25	635,0
29	736,6
33	838,2
35	889,0
39	990,6
45	1 143,0
49	1 244,6
51	1 295,4
56.5	1 435,1
57	1 447,8
59.5	1 511,3
63	1 600,2

Annex A
 (informative)

Sealing ring grooves and O-rings for earth-mover rims



Key

- 1 bead seat ring
- 2 rim base

^a This dimension cannot be measured in practice; it is shown for reference purposes only to provide guidance for the rim and O-ring manufacturers.

^b Optional contour.

^c May be greater for rim diameter codes 25 and larger.

Figure A.1 — Sealing ring grooves and O-rings for earth-mover rims

Table A.1 — Sealing ring grooves and O-rings for earth-mover rims

Dimensions in millimetres

Rim size	Rim base ^a					Bead seat ring ^a					Proposed O-ring designation															
	D_S	πD_S	tol.	R	r	T_1	D_R	πD_R	tol.	T_2		α	L													
11-20 SDC	487,4	1 531,2	±1,2	3,2	≤1,6	3,2	488,6	1 535,0	±1,2	1,2	5°	5,0	OR 220													
12-20 SDC							590,2	1 854,2						601,2	1 888,8											
13-20 SDC																										
10.00VA-24 SDC	589,0	1 850,4	±1,2				3,2	3,2	590,2				1 854,2	±1,2	1,2	5°	5,0	OR 224								
16.00T-24 SDC									609,6				1 915,1						±2,4	610,8	1 918,9	±2,4				
8.00TG-24 SDC																							620,6	1 949,7	±1,2	621,8
8.50-25/1.3	609,6	1 915,1	±2,4			3,2	≤1,6	3,2	610,8				1 918,9	±2,4	1,2	5°	5,0	OR 225								
10.00-25/1.5																										
11.25-25/1.3																										
12.00-25/1.3																										
14.00-25/1.5																										
17.00-25/1.7																										
12.00-25/1.3 SDC																										
14.00-25/1.3 SDC																										
11.25-25				600,0	1 885,0					±1,2	4,8	≤1,6							5,6	602,0	1 891,2	±1,2	1,6	2°	7,0	OR 325
13.00-25																										
15.00-25																										
16.00-25																										
17.00-25																										
19.50-25																										
20.00-25																										
22.00-25																										
24.00-25																										
25.00-25																										
-29	701,6	2 204,1	±2,4			6,4	7,2	1 246,6	3 916,3				±2,4	—	15°	9,5	OR 329									
-33	803,2	2 523,3															OR 333									
-35	854,1	2 683,2															OR 335									
-39	955,7	3 002,4															OR 339									
-43	1 057,3	3 321,6		OR 343																						
-45	1 108,1	3 481,2		OR 345																						
-49	1 209,7	3 800,4		OR 349																						
-51	1 244,6	3 910,0		OR 451																						
-57A	1 390,7	4 369,0		OR 457																						
-57B	1 397,0	4 388,8		OR 457																						
-63A	1 536,2	4 826,1		OR 463																						
-63B	1 549,4	4 867,6		OR 463																						

^a O-ring size, shape and properties should provide a lasting seal.

Bibliography

- [1] ISO 4250-1, *Earth-mover tyres and rims — Part 1: Tyre designation and dimensions*
- [2] ISO 10571, *Tyres for mobile cranes and similar specialized machines*
- [3] ISO 13442, *Tyres and rims for construction machines*

British Standards Institution (BSI)

BSI is the national body responsible for preparing British Standards and other standards-related publications, information and services.

BSI is incorporated by Royal Charter. British Standards and other standardization products are published by BSI Standards Limited.

About us

We bring together business, industry, government, consumers, innovators and others to shape their combined experience and expertise into standards-based solutions.

The knowledge embodied in our standards has been carefully assembled in a dependable format and refined through our open consultation process. Organizations of all sizes and across all sectors choose standards to help them achieve their goals.

Information on standards

We can provide you with the knowledge that your organization needs to succeed. Find out more about British Standards by visiting our website at bsigroup.com/standards or contacting our Customer Services team or Knowledge Centre.

Buying standards

You can buy and download PDF versions of BSI publications, including British and adopted European and international standards, through our website at bsigroup.com/shop, where hard copies can also be purchased.

If you need international and foreign standards from other Standards Development Organizations, hard copies can be ordered from our Customer Services team.

Subscriptions

Our range of subscription services are designed to make using standards easier for you. For further information on our subscription products go to bsigroup.com/subscriptions.

With **British Standards Online (BSOL)** you'll have instant access to over 55,000 British and adopted European and international standards from your desktop. It's available 24/7 and is refreshed daily so you'll always be up to date.

You can keep in touch with standards developments and receive substantial discounts on the purchase price of standards, both in single copy and subscription format, by becoming a **BSI Subscribing Member**.

PLUS is an updating service exclusive to BSI Subscribing Members. You will automatically receive the latest hard copy of your standards when they're revised or replaced.

To find out more about becoming a BSI Subscribing Member and the benefits of membership, please visit bsigroup.com/shop.

With a **Multi-User Network Licence (MUNL)** you are able to host standards publications on your intranet. Licences can cover as few or as many users as you wish. With updates supplied as soon as they're available, you can be sure your documentation is current. For further information, email bsmusales@bsigroup.com.

BSI Group Headquarters

389 Chiswick High Road London W4 4AL UK

Revisions

Our British Standards and other publications are updated by amendment or revision.

We continually improve the quality of our products and services to benefit your business. If you find an inaccuracy or ambiguity within a British Standard or other BSI publication please inform the Knowledge Centre.

Copyright

All the data, software and documentation set out in all British Standards and other BSI publications are the property of and copyrighted by BSI, or some person or entity that owns copyright in the information used (such as the international standardization bodies) and has formally licensed such information to BSI for commercial publication and use. Except as permitted under the Copyright, Designs and Patents Act 1988 no extract may be reproduced, stored in a retrieval system or transmitted in any form or by any means – electronic, photocopying, recording or otherwise – without prior written permission from BSI. Details and advice can be obtained from the Copyright & Licensing Department.

Useful Contacts:

Customer Services

Tel: +44 845 086 9001

Email (orders): orders@bsigroup.com

Email (enquiries): cservices@bsigroup.com

Subscriptions

Tel: +44 845 086 9001

Email: subscriptions@bsigroup.com

Knowledge Centre

Tel: +44 20 8996 7004

Email: knowledgecentre@bsigroup.com

Copyright & Licensing

Tel: +44 20 8996 7070

Email: copyright@bsigroup.com



...making excellence a habit.™