

BS ISO 4209-2:2012



BSI Standards Publication

# Truck and bus tyres and rims (metric series)

Part 2: Rims

**bsi.**

...making excellence a habit.™

**National foreword**

This British Standard is the UK implementation of ISO 4209-2:2012. It supersedes BS AU 50-4.2.1a:2002, which is withdrawn.

The UK participation in its preparation was entrusted to Technical Committee AUE/4, Tyres and wheels for motor vehicles.

A list of organizations represented on this committee can be obtained on request to its secretary.

This publication does not purport to include all the necessary provisions of a contract. Users are responsible for its correct application.

© The British Standards Institution 2012  
Published by BSI Standards Limited 2012

ISBN 978 0 580 62763 7

ICS 43.040.50; 43.080.01

**Compliance with a British Standard cannot confer immunity from legal obligations.**

This British Standard was published under the authority of the Standards Policy and Strategy Committee on 30 September 2012.

**Amendments issued since publication**

Date	Text affected
------	---------------

---

---

---

**Truck and bus tyres and rims (metric series) —**

**Part 2:  
Rims**

*Pneumatiques et jantes (séries millimétriques) pour camions et autobus —  
Partie 2: Jantes*





**COPYRIGHT PROTECTED DOCUMENT**

© ISO 2012

All rights reserved. Unless otherwise specified, no part of this publication may be reproduced or utilized in any form or by any means, electronic or mechanical, including photocopying and microfilm, without permission in writing from either ISO at the address below or ISO's member body in the country of the requester.

ISO copyright office  
Case postale 56 • CH-1211 Geneva 20  
Tel. + 41 22 749 01 11  
Fax + 41 22 749 09 47  
E-mail [copyright@iso.org](mailto:copyright@iso.org)  
Web [www.iso.org](http://www.iso.org)

Published in Switzerland

## Contents

Page

Foreword .....	iv
<b>1</b> <b>Scope</b> .....	<b>1</b>
<b>2</b> <b>Normative references</b> .....	<b>1</b>
<b>3</b> <b>Terms and definitions</b> .....	<b>1</b>
<b>4</b> <b>Designation and marking</b> .....	<b>1</b>
<b>5</b> <b>5° tapered (drop-centre) rims</b> .....	<b>1</b>
<b>5.1</b> <b>Rim flange</b> .....	<b>1</b>
<b>5.2</b> <b>Rim contours</b> .....	<b>1</b>
<b>5.3</b> <b>Rim diameter and hump circumference</b> .....	<b>4</b>
<b>5.4</b> <b>Valve holes</b> .....	<b>4</b>
<b>6</b> <b>15° tapered (drop-centre) rims</b> .....	<b>6</b>
<b>6.1</b> <b>Rim contours</b> .....	<b>6</b>
<b>6.2</b> <b>Rim diameters</b> .....	<b>8</b>
<b>6.3</b> <b>Valve holes</b> .....	<b>9</b>
<b>Bibliography</b> .....	<b>11</b>

## Foreword

ISO (the International Organization for Standardization) is a worldwide federation of national standards bodies (ISO member bodies). The work of preparing International Standards is normally carried out through ISO technical committees. Each member body interested in a subject for which a technical committee has been established has the right to be represented on that committee. International organizations, governmental and non-governmental, in liaison with ISO, also take part in the work. ISO collaborates closely with the International Electrotechnical Commission (IEC) on all matters of electrotechnical standardization.

International Standards are drafted in accordance with the rules given in the ISO/IEC Directives, Part 2.

The main task of technical committees is to prepare International Standards. Draft International Standards adopted by the technical committees are circulated to the member bodies for voting. Publication as an International Standard requires approval by at least 75 % of the member bodies casting a vote.

Attention is drawn to the possibility that some of the elements of this document may be the subject of patent rights. ISO shall not be held responsible for identifying any or all such patent rights.

ISO 4209-2 was prepared by Technical Committee ISO/TC 31, *Tyres, rims and valves*, Subcommittee SC 4, *Truck and bus tyres and rims*.

This fourth edition cancels and replaces the third edition (ISO 4209-2:2001), which has been technically revised.

ISO 4209 consists of the following parts, under the general title *Truck and bus tyres and rims (metric series)*:

- *Part 1: Tyres*
- *Part 2: Rims*

# Truck and bus tyres and rims (metric series) —

## Part 2: Rims

### 1 Scope

This part of ISO 4209 specifies the designations, contours and dimensions of drop-centre (one-piece) rims for use on trucks and buses.

The rim dimensions are those rim contour dimensions necessary for mounting and fitment of the tyre to the rim.

Tyre designations, dimensions and load ratings are given in ISO 4209-1.

### 2 Normative references

The following referenced documents are indispensable for the application of the document. For dated references, only the edition cited applies. For undated references, the latest edition of the referenced document (including any amendments) applies.

ISO 3911, *Wheels and rims for pneumatic tyres — Vocabulary, designation and marking*

ISO 4000-2, *Passenger car tyres and rims — Part 2: Rims*

### 3 Terms and definitions

For the purposes of this document, the terms and definitions given in ISO 3911 apply.

### 4 Designation and marking

The rim shall be designated by its nominal rim diameter code and nominal rim width code (e.g. 17.5 × 5.25), and rim flange when specified (for example: 16 × 6 K).

### 5 5° tapered (drop-centre) rims

#### 5.1 Rim flange

Recommended rim flange contours for K rims are given in Table 1.

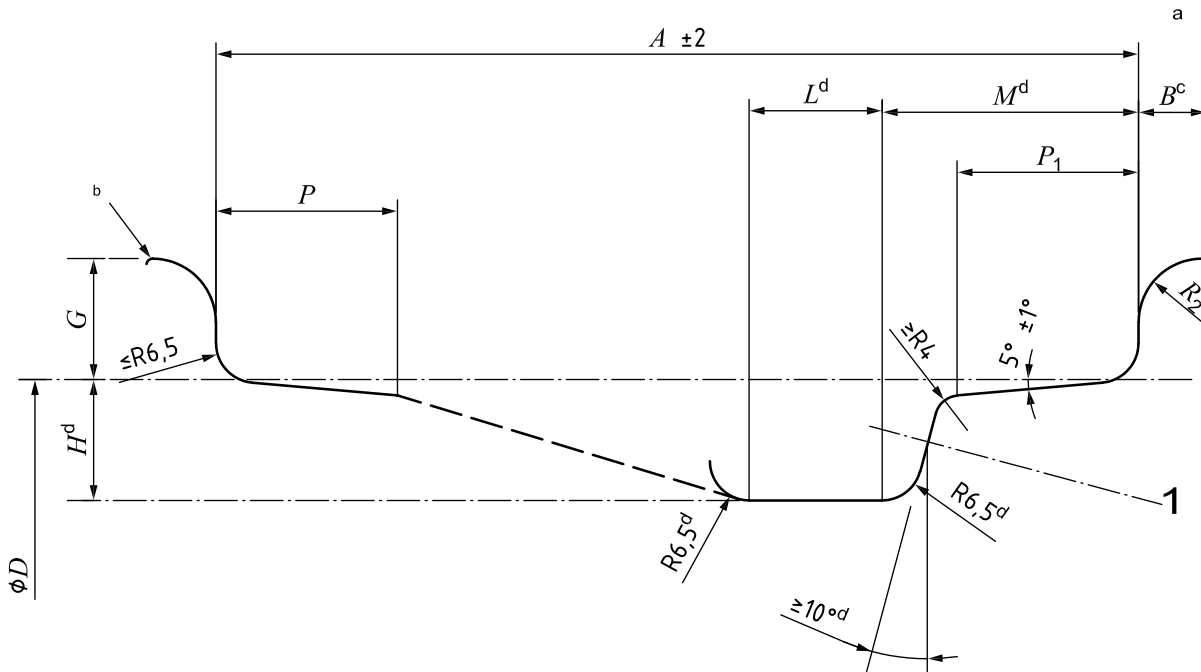
Refer to ISO 4000-2 for B and J contour rims.

#### 5.2 Rim contours

The dimensions and tolerances of the rims shall be as given in Figure 1 and Tables 1 and 2.

Optional bead seat contours and their dimensions are given in Figure 2 and Table 3.

Dimensions in millimetres



**Key**

1 valve hole (see 5.4)

NOTE For use with tubeless tyres, humps are necessary on the vehicle outboard side and preferred on the vehicle inboard side.

a Tyre-mounting side.

b Break corner equivalent to 0,5 minimum  $R$ .

c Flange width includes edge radius. The portion of a flange beyond the minimum width shall not be higher than the highest point of the flange.

d These dimensions comprise the minimum well envelope for tyre-mounting purposes, except for localized areas at the weld or the valve hole.

**Figure 1 — Contour of 5° tapered (drop-centre) rims**

**Table 1 — Dimensions of 5° (drop-centre) rim contours**

Dimensions in millimetres

Nominal rim diameter code	Nominal rim width code and flange type <sup>b</sup>	$B$ min.	$G$ $\pm 1,0$	$P$ min.	$P_1$ min.	$H^a$ gauge	$L$ gauge	$M$ max.	$R_2$ min.
16	6 K and wider	11,5	20	19,5	19,5	20	22	47	10,5

<sup>a</sup> Minimum dimensions for the well depth,  $H$ , and the well angle are required for tyre-mounting. Larger values may be required to ensure sufficient space for tubeless tyre valve seating.

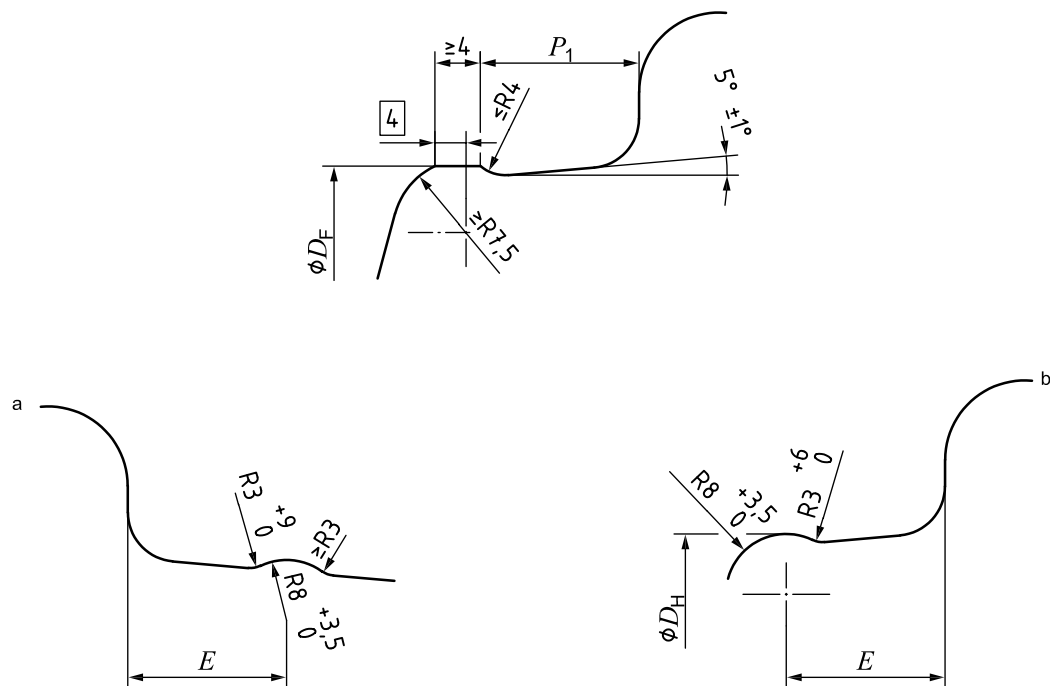
<sup>b</sup> Dimension  $A$  = nominal rim width code  $\times$  25,4 (rounded to 0,5 mm) (increments of code = 0,5).



Table 2 — Nominal rim width code

Nominal rim width code		<i>A</i> mm
6.00	6	152,5
6.50	6 1/2	165
7.00	7	178
7.50	7 1/2	190,5
8.00	8	203
8.50	8 1/2	216
9.00	9	228,5
9.50	9 1/2	241,5
10.00	10	254
10.50	10 1/2	266,5
11.00	11	279,5
12.00	12	305
13.00	13	330
14.00	14	355,5
15.00	15	381

Dimensions in millimetres



- a Non-mounting side.
- b Tyre-mounting side.

Figure 2 — Optional bead seat contours

**Table 3 — *E* dimension for round humps**

<b>Nominal rim width code and flange type</b>	<i>E</i> mm
6 K and wider	$21^{+2,0}_0$
For <i>E</i> , $19,5^{+2,0}_0$ is also permitted.	

### 5.3 Rim diameter and hump circumference

The specified rim diameter, *D*, for the appropriate nominal rim diameter code and the hump circumferences are given in Table 4.

**Table 4 — Specified rim diameter and hump circumference of 5° tapered (drop-centre) rims**

Dimensions in millimetres

Nominal rim diameter code	Specified rim diameter <sup>a</sup> <i>D</i> ± 0,4	Hump circumference	
		Flat hump $\varnothing D_F -3,5^0$	Round hump <sup>b</sup> $\varnothing D_H -3,0^0$
16	405,6	1 274,2	1 276,4
<sup>a</sup> The tolerance for the specified rim diameter is for tyre design purposes only. The rim measurement is by a circumference-measuring tape related to a mandrel. <sup>b</sup> For round humps on the vehicle inboard side only, a tolerance of $-5,0^0$ is also permitted.			

### 5.4 Valve holes

**5.4.1** Valve hole edges on the tyre side of rim shall be rounded or chamfered.

**5.4.2** Valve hole edges on the weather (external) side of the rim shall be free from any burrs that could damage the valve.

**5.4.3** To provide for adequate sealing, an unbroken, smooth inside surface having at least 0,75 mm or 25 % of rim thickness, whichever is greater, shall be maintained.

**5.4.4** Suitable valves shall be used. Valve hole details for snap-in valves shall be as shown in Figures 3 and 4.

NOTE Holes for other valves are under consideration for a future revision of this part of ISO 4209.

Dimensions in millimetres

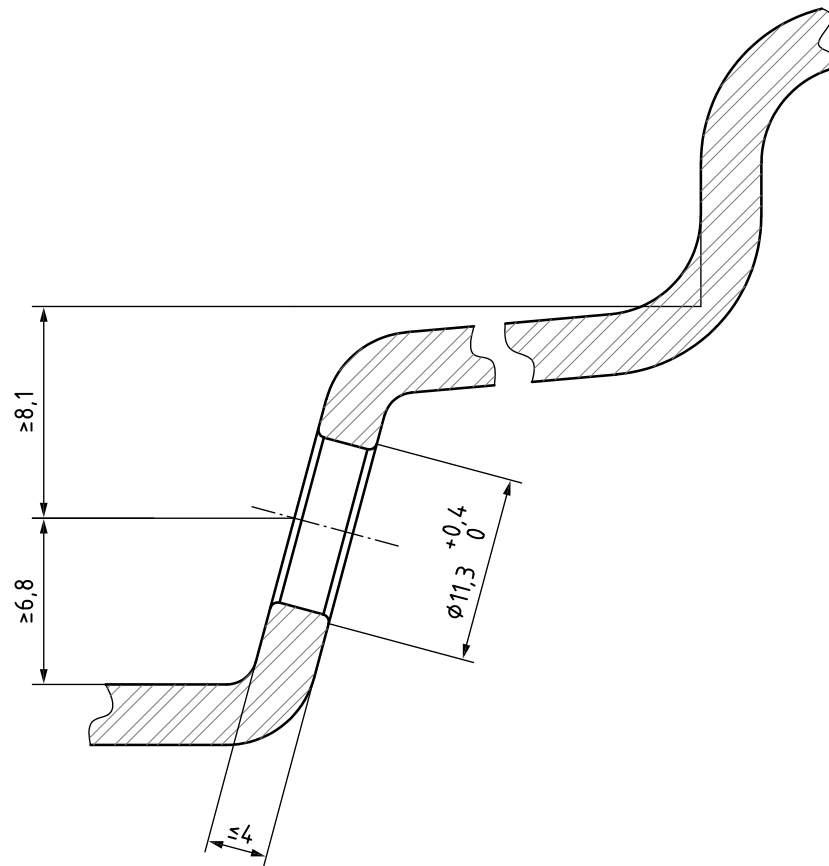
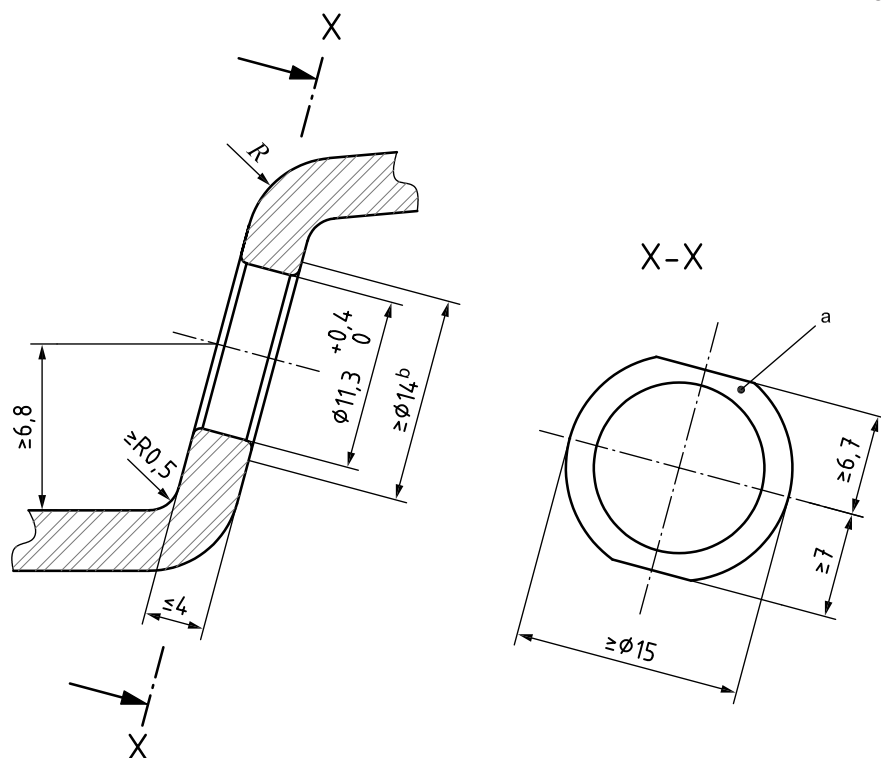


Figure 3 — Valve hole dimensions



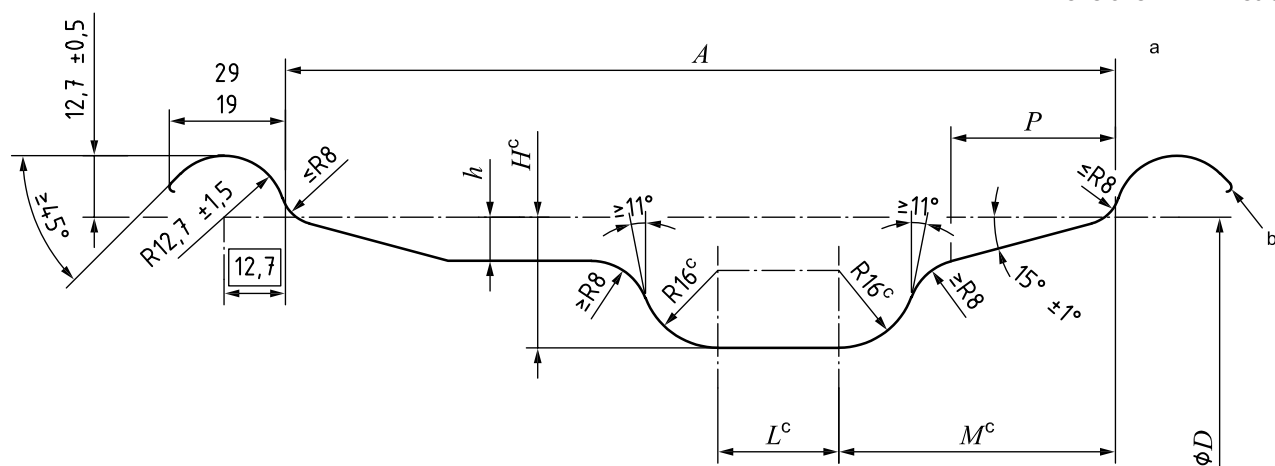
- a Flat surface with no radial striations.
- b Flat surface for clamp-in valves.

Figure 4 — Optional flat surface around valve hole

## 6 15° tapered (drop-centre) rims

### 6.1 Rim contours

The dimensions and tolerances of rims shall be as given in Figure 5 and Tables 5 and 6.



- a Tyre-mounting side.
- b Break corner equivalent to 0,5 mm minimum radius.
- c These dimensions comprise the minimum well envelope for tyre-mounting purposes.

Figure 5 — Dimensions of 15° tapered (drop-centre) rim contours

**Table 5 — Dimensions of 15° tapered (drop-centre) rim contours for nominal rim width codes ≤ 9.75**

Dimensions in millimetres

Rim size designation	<i>A</i> ±3,5	<i>H</i> <sup>a</sup> min.	<i>h</i> min.	<i>L</i> <sup>a</sup> min.	<i>M</i> <sup>a</sup> max.	<i>P</i> min.			
17.5 × 5.25	133,5	24	7	4	55	25			
19.5 × 5.25		27			56				
22.5 × 5.25		30			57				
17.5 × 6.00	152,5	24	8,5	11	60	30			
17.5 × 6.00 HC		30			63				
19.5 × 6.00		27			62				
19.5 × 6.00 RW		24	56	25					
22.5 × 6.00	171,5	30	8.5	11	63	30			
17.5 × 6.75		24			62 <sup>c</sup>		25		
17.5 × 6.75 HC		30			14		70	32	
19.5 × 6.75		27					64	30 <sup>b</sup>	
19.5 × 6.75 RW		24			19		56	25	
22.5 × 6.75	190,5	30	9	14	66 <sup>c</sup>	32			
17.5 × 7.50		24			9.5		65 <sup>c</sup>	25	
17.5 × 7.50 HC		30			10		21	74	34
19.5 × 7.50		27			9.5			67	
19.5 × 7.50 RW		25						58	
22.5 × 7.50		30			10		68 <sup>c</sup>	34	
24.5 × 7.50	209,5	30	9.5	14	70 <sup>c</sup>				
17.5 × 8.25					24	9,5	55 <sup>c</sup>	26	
17.5 × 8.25 HC					30	10	28	74	36
19.5 × 8.25					27	9.5		67	30
19.5 × 8.25 RW					25		21	58	
22.5 × 8.25					228,5	30	10	28	70 <sup>c</sup>
24.5 × 8.25	72 <sup>c</sup>								
19.5 × 9.00	9,5	68	30						
22.5 × 9.00	70 <sup>c</sup>	36							
24.5 × 9.00	72 <sup>c</sup>								
22.5 × 9.75	247,5	30	10	28	70 <sup>c</sup>				
					72 <sup>c</sup>				

<sup>a</sup> These dimensions comprise the minimum well envelope for tyre-mounting purposes.

<sup>b</sup> For light truck application (load index ≤ 121 in single mounting), 25 mm may be used. These rims shall be appropriately identified.

<sup>c</sup> Larger dimensions may be used subject to confirmation by tyre-mounting trials.

**Table 6 — Dimensions of 15° tapered (drop-centre) rim contours for nominal rim width codes ≥ 10.50**

Dimensions in millimetres

Rim size designation	<i>A</i> ±5,0	<i>H</i> <sup>a</sup> min.	<i>h</i> min.	<i>L</i> <sup>a</sup> min.	<i>M</i> <sup>a</sup> max.	<i>P</i>	
17.5 × 10.50	266,5	24	9,5	14	55	26	
19.5 × 10.50					68 <sup>b</sup>		
22.5 × 10.50					70 <sup>b</sup>		
19.5 × 11.75	298,5	30	10	30	68 <sup>b</sup>	34	
22.5 × 11.75					70 <sup>b</sup>		
19.5 × 12.25	311				68 <sup>b</sup>		
22.5 × 12.25	70 <sup>b</sup>						
19.5 × 13.00	330				68 <sup>b</sup>		
22.5 × 13.00					70 <sup>b</sup>		
19.5 × 14.00	355,5				68 <sup>b</sup>		
22.5 × 14.00					70 <sup>b</sup>		
19.5 × 15.00	381				11		68 <sup>b</sup>
22.5 × 15.00							70 <sup>b</sup>
20.5 × 16.00	406,5						70 <sup>b</sup>
22.5 × 16.00							70 <sup>b</sup>
20.5 × 18.00	457	70 <sup>b</sup>					
22.5 × 18.00		70 <sup>b</sup>					

<sup>a</sup> These dimensions comprise the minimum well envelope for tyre-mounting purposes.  
<sup>b</sup> Larger dimensions may be used subject to confirmation by tyre-mounting trials.

## 6.2 Rim diameters

The nominal rim diameter codes and the specified rim diameters for 15° tapered (drop-centre) rim contours are given in Table 7.

**Table 7 — Nominal rim diameter code and specified rim diameter**

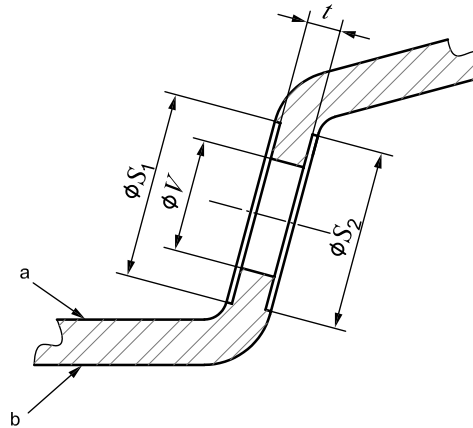
Nominal rim diameter code	Specified rim diameter <sup>a</sup>
	∅ <i>D</i> mm ±0,4
17.5	444,5
19.5	495,3
20.5	520,7
22.5	571,5
24.5	622,3

<sup>a</sup> Tolerance is for tyre design purposes only. Rim measurement is by circumference-measuring tape related to a mandrel.

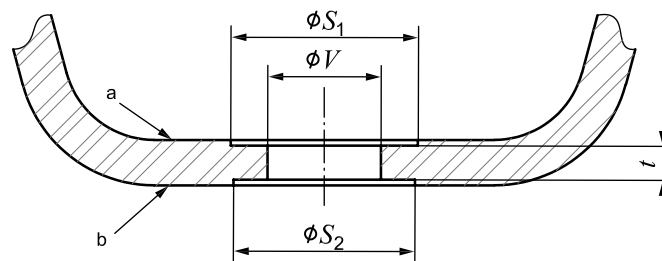
### 6.3 Valve holes

#### 6.3.1 General

The dimensions, locations and tolerances of rim holes are given in Figure 6 and Table 8.



a) Side of well



b) Bottom of well

- a Tyre side.
- b External side.

Figure 6 — Dimensions of valve holes for 15° tapered rims

Table 8 — Dimensions of valve holes for 15° tapered rims

Dimensions in millimetres

Hole diameter min./ max. $V$	Location	Circular flat diameter min.		Rim thickness at circular flat min./max. $t$
		Tyre side $S_1$	External side $S_2$	
9.7/10.0	Side of well	18	16	5,5/6,0
	Bottom of well	16,5	12,5	3/6
15.7/16.1	Side of well	19,3	19,3	4,8/8
	Bottom of well	19,3	19,3	4,8/8
		27	27	3,5/6

Consult the valve manufacturer on valves for 9.7/10.0 hole with thickness,  $t$ , above 6 mm and for 15.7/16.1 hole with  $t$  above 8 mm.

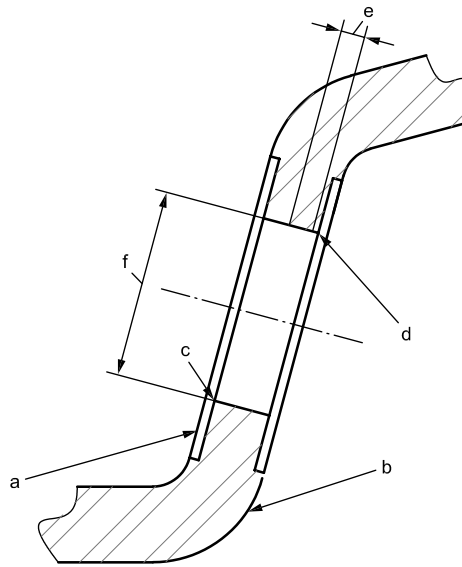
Circular flats  $S_1$  and  $S_2$  are to be parallel within 0,2 mm.

### 6.3.2 Characteristics of valve holes

6.3.2.1 The edges of the holes on the tyre side of the rim shall be rounded or chamfered.

6.3.2.2 The edges of the holes on the external side of the rim shall be free from any burrs that could damage the valve.

6.3.2.3 To provide for adequate sealing for tubeless tyre rim valves, an unbroken, smooth inside surface of holes having at least 25 % of rim thickness shall be maintained. See Figure 7.



- a Tyre side.
- b External side.
- c See 6.3.2.1.
- d See 6.3.2.2.
- e See 6.3.2.3.
- f See 6.3.2.4.

**Figure 7 — Valve holes**

6.3.2.4 Holes shall be round within established diameter limits measured in any direction for applications above 300 kPa.

6.3.2.5 A concentric circular flat is mandatory to provide a flat surface for valves to seat properly in applications above 300 kPa.

6.3.2.6 For clamp-in type valves, the angle of circular flat is to be such as to position the valve to make the tip end accessible for inflating and checking inflation pressure in dual assemblies with current servicing equipment in the field.



## Bibliography

- [1] ISO 4209-1, *Truck and bus tyres and rims (metric series) — Part 1: Tyres*

---

---

**ICS 43.040.50**

Price based on 11 pages



# British Standards Institution (BSI)

BSI is the national body responsible for preparing British Standards and other standards-related publications, information and services.

BSI is incorporated by Royal Charter. British Standards and other standardization products are published by BSI Standards Limited.

## About us

We bring together business, industry, government, consumers, innovators and others to shape their combined experience and expertise into standards-based solutions.

The knowledge embodied in our standards has been carefully assembled in a dependable format and refined through our open consultation process. Organizations of all sizes and across all sectors choose standards to help them achieve their goals.

## Information on standards

We can provide you with the knowledge that your organization needs to succeed. Find out more about British Standards by visiting our website at [bsigroup.com/standards](http://bsigroup.com/standards) or contacting our Customer Services team or Knowledge Centre.

## Buying standards

You can buy and download PDF versions of BSI publications, including British and adopted European and international standards, through our website at [bsigroup.com/shop](http://bsigroup.com/shop), where hard copies can also be purchased.

If you need international and foreign standards from other Standards Development Organizations, hard copies can be ordered from our Customer Services team.

## Subscriptions

Our range of subscription services are designed to make using standards easier for you. For further information on our subscription products go to [bsigroup.com/subscriptions](http://bsigroup.com/subscriptions).

With **British Standards Online (BSOL)** you'll have instant access to over 55,000 British and adopted European and international standards from your desktop. It's available 24/7 and is refreshed daily so you'll always be up to date.

You can keep in touch with standards developments and receive substantial discounts on the purchase price of standards, both in single copy and subscription format, by becoming a **BSI Subscribing Member**.

**PLUS** is an updating service exclusive to BSI Subscribing Members. You will automatically receive the latest hard copy of your standards when they're revised or replaced.

To find out more about becoming a BSI Subscribing Member and the benefits of membership, please visit [bsigroup.com/shop](http://bsigroup.com/shop).

With a **Multi-User Network Licence (MUNL)** you are able to host standards publications on your intranet. Licences can cover as few or as many users as you wish. With updates supplied as soon as they're available, you can be sure your documentation is current. For further information, email [bsmusales@bsigroup.com](mailto:bsmusales@bsigroup.com).

## BSI Group Headquarters

389 Chiswick High Road London W4 4AL UK

## Revisions

Our British Standards and other publications are updated by amendment or revision.

We continually improve the quality of our products and services to benefit your business. If you find an inaccuracy or ambiguity within a British Standard or other BSI publication please inform the Knowledge Centre.

## Copyright

All the data, software and documentation set out in all British Standards and other BSI publications are the property of and copyrighted by BSI, or some person or entity that owns copyright in the information used (such as the international standardization bodies) and has formally licensed such information to BSI for commercial publication and use. Except as permitted under the Copyright, Designs and Patents Act 1988 no extract may be reproduced, stored in a retrieval system or transmitted in any form or by any means – electronic, photocopying, recording or otherwise – without prior written permission from BSI. Details and advice can be obtained from the Copyright & Licensing Department.

## Useful Contacts:

### Customer Services

**Tel:** +44 845 086 9001

**Email (orders):** [orders@bsigroup.com](mailto:orders@bsigroup.com)

**Email (enquiries):** [cservices@bsigroup.com](mailto:cservices@bsigroup.com)

### Subscriptions

**Tel:** +44 845 086 9001

**Email:** [subscriptions@bsigroup.com](mailto:subscriptions@bsigroup.com)

### Knowledge Centre

**Tel:** +44 20 8996 7004

**Email:** [knowledgecentre@bsigroup.com](mailto:knowledgecentre@bsigroup.com)

### Copyright & Licensing

**Tel:** +44 20 8996 7070

**Email:** [copyright@bsigroup.com](mailto:copyright@bsigroup.com)



...making excellence a habit.™